

STANDARD OPERATING PROCEDURE SOP5352/1

Findings During Retrieval Requiring Histopathology Assessment

This SOP replaces
NEW

Copy Number

Effective **22/01/18**

Summary of Significant Changes
N/A

Purpose

During the Organ Retrieval Process there are occasions when suspicious lesions are identified that require histopathology assessment. This is not a service provided or commissioned by NHSBT and the destination of samples can vary significantly.

This process provides guidance for all those involved in the histopathology assessment of samples that may affect the safety of an organ, including SNODs, NORS teams, histopathologists, Biomedical Scientists, Hub Operations staff, and Transplant centres.

Responsibilities

National Organ Retrieval Team (NORS) –

Identify any lesion that may require histopathology assessment, gain advice where required and inform the SNOD as soon as lesion identified. To complete all relevant clinical information on National Request Form ([FRM5867](#))

Specialist Nurse – Organ Donation (SNOD)

To facilitate the organisation of samples to be sent for histopathology assessment as agreed by the NORS surgeon and complete demographics on the National Histopathology Request Form ([FRM5867](#)). To communicate, report and document any findings requiring additional action that is identified during the organ donation process to Hub Operations, Recipient Centre Points of Contact (RCPoC) and/or Eye/Tissue Establishments as necessary.

Histopathology Laboratory –

Notify SNOD/Hub Operations of any findings or results following histopathology assessment.

Hub Operations –

To communicate with the appropriate SNOD/RCPoC/Eye/Tissue Establishment once informed of the finding and document their actions on NTxD.

Transplant Centres –

To notify Hub Operations if there is any change in agreed process for assessment. To notify Hub Operations immediately if any new suspicious lesions are identified at organ assessment at the Recipient Centre, and timescales of any results to be available.

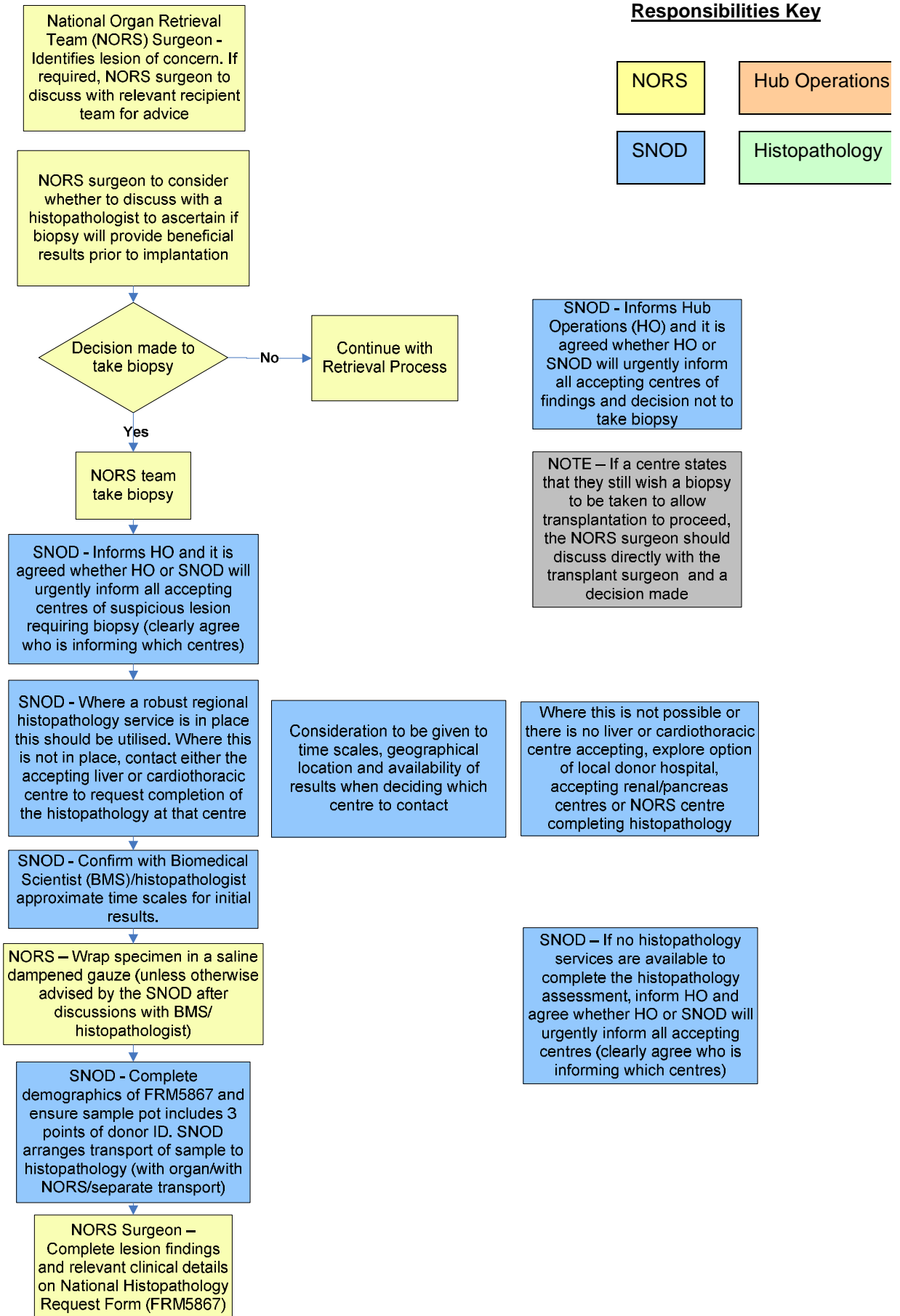
Items Required

[FRM5867](#) – National Histopathology Request Form

[MPD881](#) – Findings Requiring Additional Action

STANDARD OPERATING PROCEDURE SOP5352/1

Findings During Retrieval Requiring Histopathology Assessment



STANDARD OPERATING PROCEDURE SOP5352/1

Findings During Retrieval Requiring Histopathology Assessment

