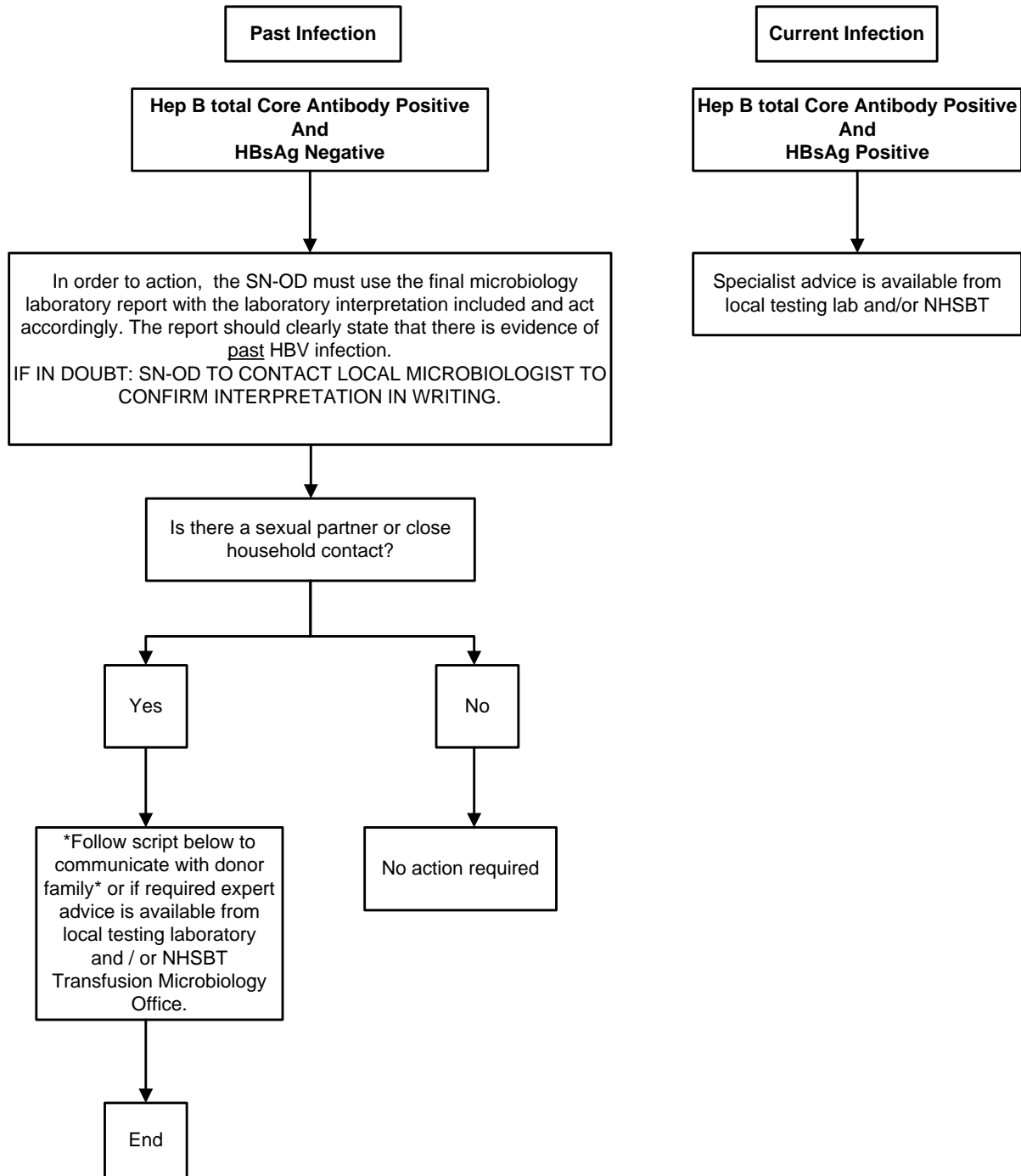


Communicating with families about past/current hepatitis B infection



***SCRIPT*:** “The result indicates hepatitis B infection sometime in the past, and it may have been in the distant past. The patient was not infected at the time of this recent testing. If individuals who were very close (sexual partners/close household contacts) wish to discuss the need to check their hepatitis B status, they should be advised to see their GP ”.