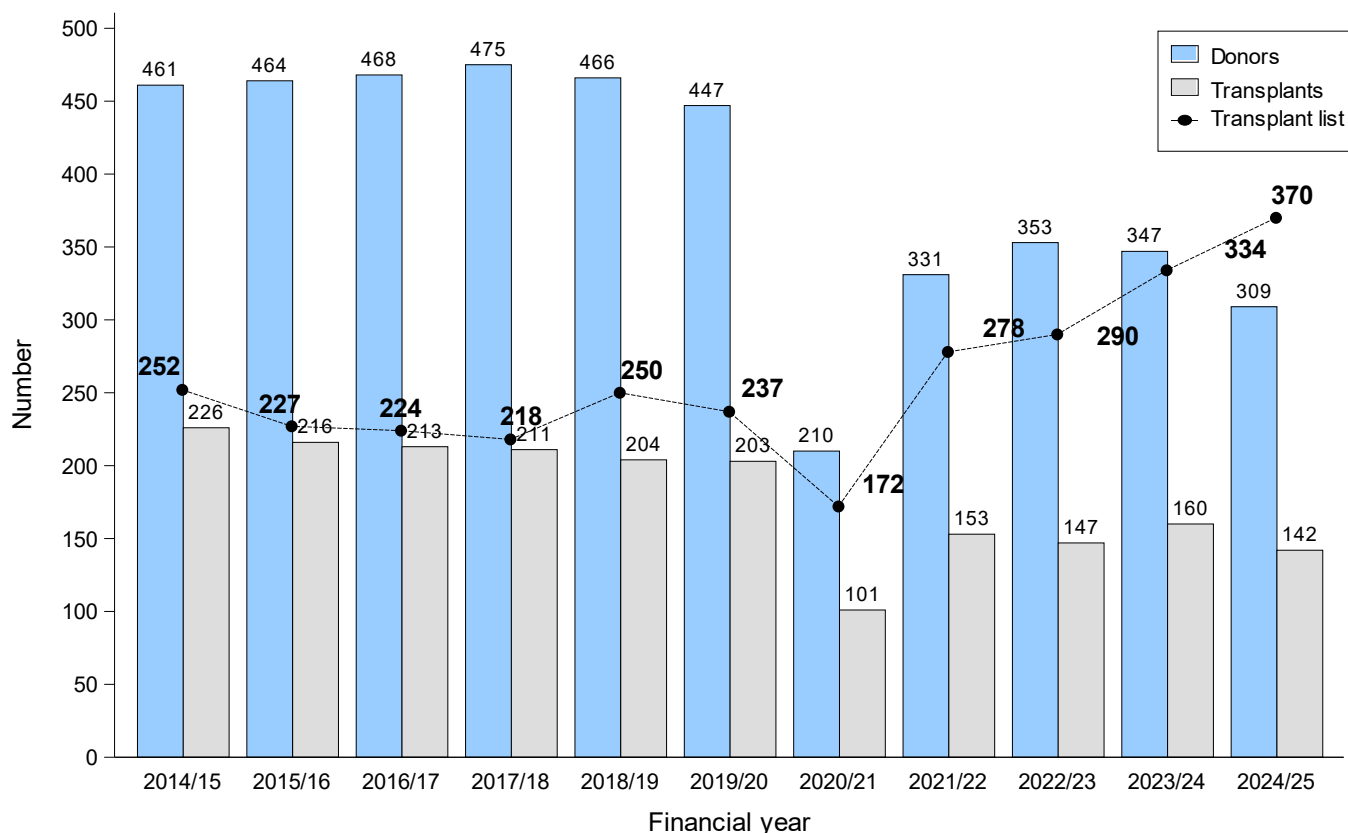


**NHS BLOOD & TRANSPLANT
ORGAN DONATION AND TRANSPLANTATION DIRECTORATE
PANCREAS ADVISORY GROUP AND ISLET STEERING GROUP
TRANSPLANT LIST AND TRANSPLANT ACTIVITY**

Figure 1 Deceased pancreas and islet programme in the UK, 1 April 2014 - 31 March 2025, Number of donors, transplants and patients on the active transplant list at 31 March



Centre	Kidney/ pancreas		Kidney/ islet		Active transplant lists						TOTAL	
					Pancreas alone		Islet		Priority			
Cambridge	26	(23)	-	-	1	(0)	-	-	-	-	27	(23)
Cardiff	16	(13)	-	-	0	(0)	-	-	-	-	16	(13)
Edinburgh	37	(42)	8	(5)	0	(0)	4	(5)	1	(2)	50	(54)
Guys	35	(41)	-	-	0	(0)	-	-	-	-	35	(41)
Manchester	111	(90)	14	(7)	4	(3)	4	(1)	2	(2)	135	(103)
Newcastle	17	(14)	0	(0)	0	(2)	4	(4)	1	(0)	22	(20)
Oxford	66	(66)	6	(5)	2	(0)	3	(1)	0	(0)	77	(72)
WLRTC	8	(8)	-	-	0	(0)	-	-	-	-	8	(8)
King's College	-	-	0	(0)	-	-	0	(0)	0	(0)	0	(0)
TOTAL	316	(297)	28	(17)	7	(5)	15	(11)	4	(4)	370	(334)

**Table 2 Pancreas donation rates for deceased donors in the UK,
1 April 2024 - 31 March 2025, by Country/ Strategic Health Authority**

Country/ Strategic Health Authority of residence	Pancreas donors (pmp)				TOTAL	
	DBD		DCD			
North East	11	(4.1)	7	(2.6)	18	(6.6)
North West	15	(2.0)	10	(1.3)	25	(3.3)
Yorkshire and The Humber	12	(2.1)	8	(1.4)	20	(3.6)
North of England	38	(2.4)	25	(1.6)	63	(4.0)
East Midlands	16	(3.2)	6	(1.2)	22	(4.4)
West Midlands	30	(4.9)	7	(1.1)	37	(6.1)
East of England	14	(2.2)	15	(2.3)	29	(4.5)
Midlands and East	60	(3.4)	28	(1.6)	88	(5.0)
London	17	(1.9)	8	(0.9)	25	(2.8)
South East Coast	21	(4.3)	11	(2.2)	32	(6.5)
South Central	12	(2.6)	4	(0.9)	16	(3.5)
South West	23	(4.0)	14	(2.4)	37	(6.4)
South of England	56	(3.7)	29	(1.9)	85	(5.6)
England	171	(3.0)	90	(1.6)	261	(4.5)
Isle of Man	1	(12.5)	1	(12.5)	2	(25.0)
Channel Islands	1	(6.3)	0	(0.0)	1	(6.3)
Wales	11	(3.5)	2	(0.6)	13	(4.1)
Scotland	16	(2.9)	8	(1.5)	24	(4.4)
Northern Ireland	6	(3.1)	2	(1.0)	8	(4.2)
TOTAL¹	206	(3.0)	103	(1.5)	309	(4.5)

¹ Includes 6 donors where the hospital postcode was used in place of an unknown donor postcode

Table 3 DBD Pancreas transplants, 1 April 2024 - 31 March 2025 (2024) by centre

Centre	Transplant type												Total	
	SPK		SIK		PTA		PAK		Islet		Routine	Priority		
Cambridge	11	(6)	-	-	0	(0)	0	(1)	-	-	-	-	11	(7)
Cardiff	3	(8)	-	-	0	(0)	0	(0)	-	-	-	-	3	(8)
Edinburgh	8	(7)	1	(1)	0	(0)	0	(0)	3	(4)	4	(2)	16	(14)
Guys	9	(5)	-	-	0	(0)	0	(0)	-	-	-	-	9	(5)
Manchester	16	(16)	3	(3)	1	(0)	0	(2)	0	(1)	1	(1)	21	(23)
Newcastle	3	(5)	0	(0)	0	(1)	1	(0)	0	(0)	0	(1)	4	(7)
Oxford	22	(22)	3	(1)	1	(4)	0	(2)	0	(2)	1	(0)	27	(31)
WLRTC	5	(4)	-	-	0	(0)	0	(0)	-	-	-	-	5	(4)
King's College	-	-	0	(0)	-	-	-	-	0	(0)	0	(0)	0	(0)
TOTAL	77	(73)	7	(5)	2	(5)	1	(5)	3	(7)	6	(4)	96	(99)

WLRTC - West London Renal and Transplant Centre

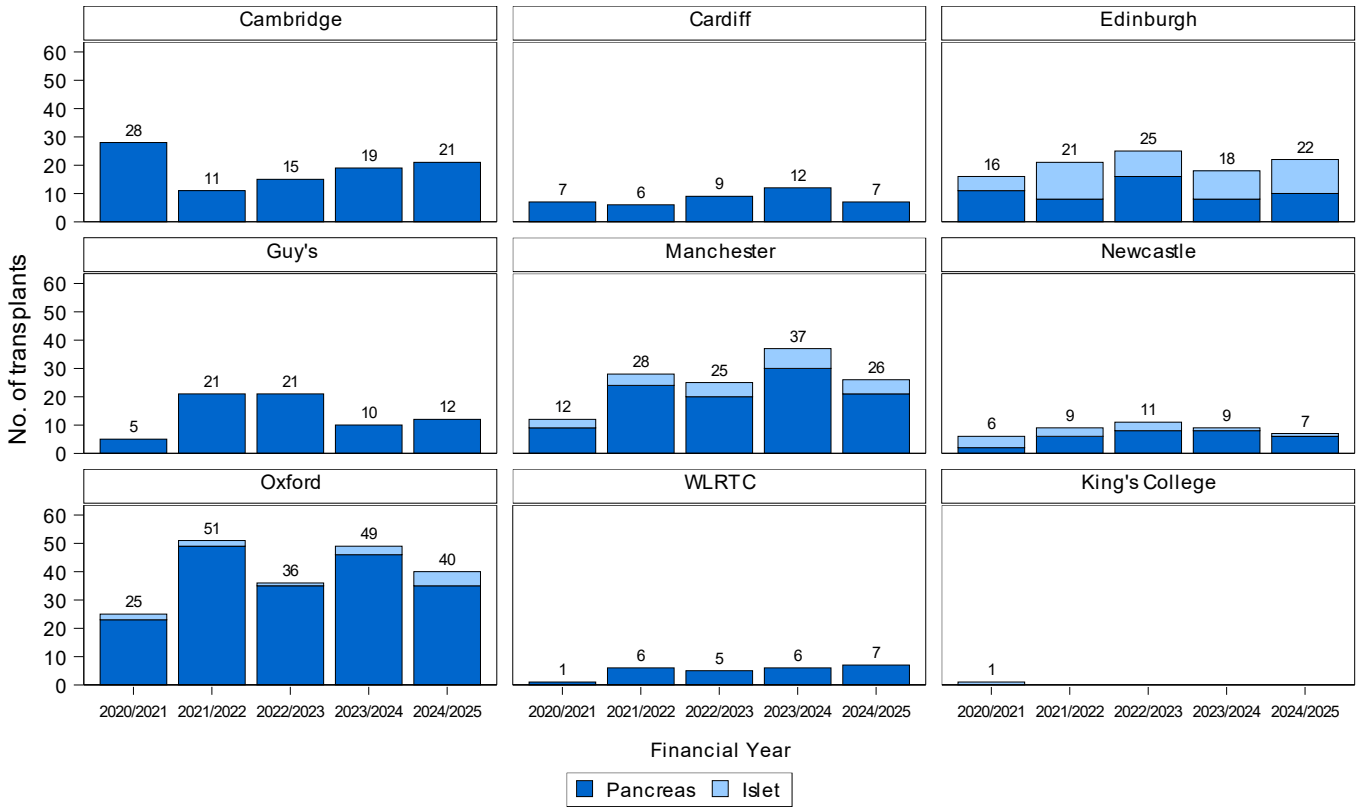
Table 4 DCD Pancreas transplants, 1 April 2024 - 31 March 2025 (2024) by centre

Centre	Transplant type												Total	
	SPK		SIK		PTA		PAK		Islet		Routine	Priority		
Cambridge	10	(12)	-	-	0	(0)	0	(0)	-	-	-	-	10	(12)
Cardiff	4	(4)	-	-	0	(0)	0	(0)	-	-	-	-	4	(4)
Edinburgh	2	(1)	2	(3)	0	(0)	0	(0)	1	(0)	1	(0)	6	(4)
Guys	3	(5)	-	-	0	(0)	0	(0)	-	-	-	-	3	(5)
Manchester	4	(11)	0	(2)	0	(0)	0	(1)	0	(0)	1	(0)	5	(14)
Newcastle	1	(2)	0	(0)	0	(0)	1	(0)	1	(0)	0	(0)	3	(2)
Oxford	11	(18)	0	(0)	1	(0)	0	(0)	1	(0)	0	(0)	13	(18)
WLRTC	1	(2)	-	-	0	(0)	1	(0)	-	-	-	-	2	(2)
King's College	-	-	0	(0)	-	-	-	-	0	(0)	0	(0)	0	(0)
TOTAL	36	(55)	2	(5)	1	-	2	(1)	3	(0)	2	(0)	46	(61)

WLRTC - West London Renal and Transplant Centre

Of the 46 DCD pancreas transplants, 12 (26.1%) used normothermic regional perfusion (NRP). Four of these transplants were performed at Oxford, four at Cambridge, two at Edinburgh, one at Newcastle and one at Manchester.

Figure 2 Total number of pancreas transplants by centre and transplant type, 1 April 2020 - 31 March 2025



Rhiannon Wallis
Statistics and Clinical Research
2025

September