



Sustainability and Certainty in Organ Retrieval (SCORE)

Advisory Groups Autumn / Winter 2025

SCORE Advisory group Update



Blood and Transplant



Investment committee approval. This means we have the green light to progress the programme and to implement the structure and operating model that's been communicated widely previously.



We are now entering a development phase in NHSBT where we add more detail and data to the operating model e.g. through simulation and through collaboration (Highlights of simulation to come).



We continue to work with commissioners to determine the best route to support you with any challenges you may face.



Transplant centres are strongly encouraged to review how the changes from SCORE and local practise / arrangements can be aligned. There is approximately 1 year to go. Where changes may be required, Transplant centres should make progress to implement them.



NORS contract value: Over the summer, a letter was sent to NORS teams outlining the impact of SCORE on contract values. We understand that some people may wish to discuss this further, so it will be included as an agenda item at the upcoming RAG meeting, which is the most appropriate forum for this conversation.

A person is seen from behind, wearing a black and white horizontally striped long-sleeved shirt, a black beret, and dark trousers. They are standing against a light-colored, textured wall. Their right hand is raised, palm facing the wall. A dark, well-defined shadow of the person is cast onto the wall to their left, mirroring their pose. The lighting is bright and directional, creating a strong contrast between the person and their shadow.

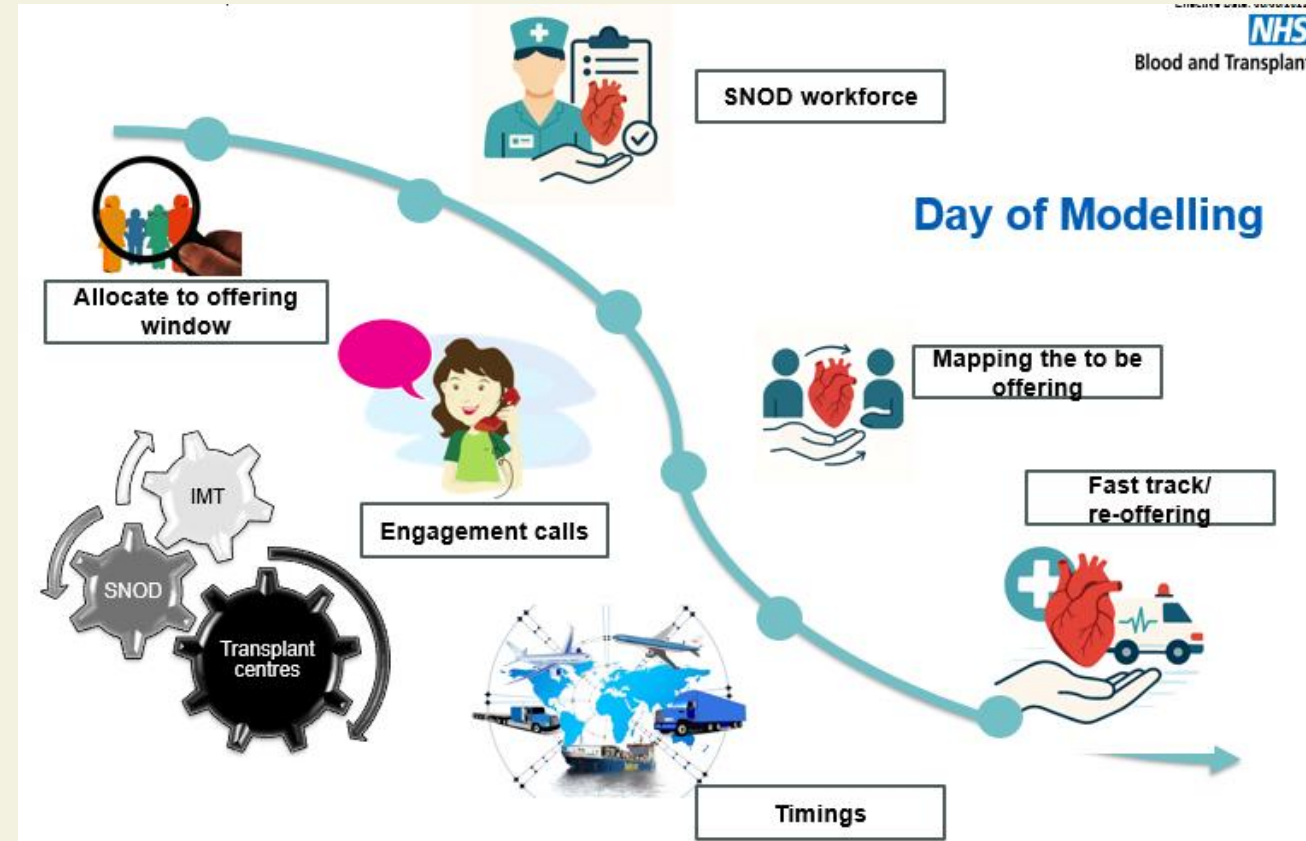
SCORE Shadow Modelling – Phase 2

Advisory Groups Sept – Dec 2025

Planned Arrival Window (PAW) Shadow modelling

Aims

- Test viability of proposed PAW timings
- Understand the operational considerations across the pathway by involving operational colleagues
- Identify barriers or issues which could impact implementation
- Build confidence in the system's readiness for change



PAW Shadow modelling – Headlines



Blood and Transplant

8 April – 24 July 2025
33 days

145 Donors
145 Abdo attendances
54 CT attendances

500 organs accepted

- 433 abdominal
- 67 cardiothoracic

99% donors attended in the first
PAW
No sequential retrievals

Of the 16 occasions (11%) donor
registered 0800-1600 in PAW+
12 occasions (75%) facilitated
that night

Of the 4/16 PAW+ not able to be
facilitated that night

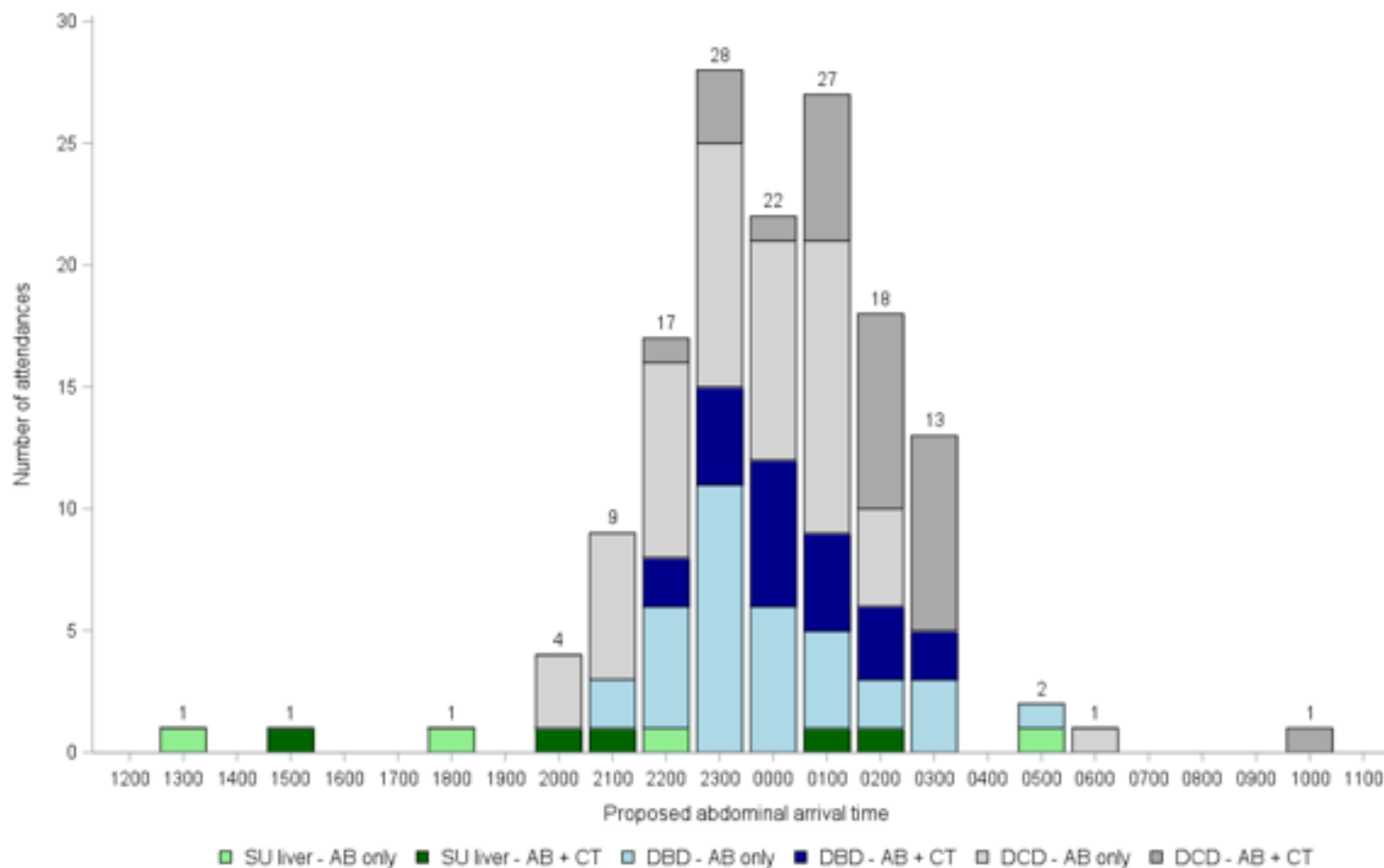
- 3 CT (2 DCD H)
- 1 Abdo

95% NORS teams arrivals
between 2000-0300

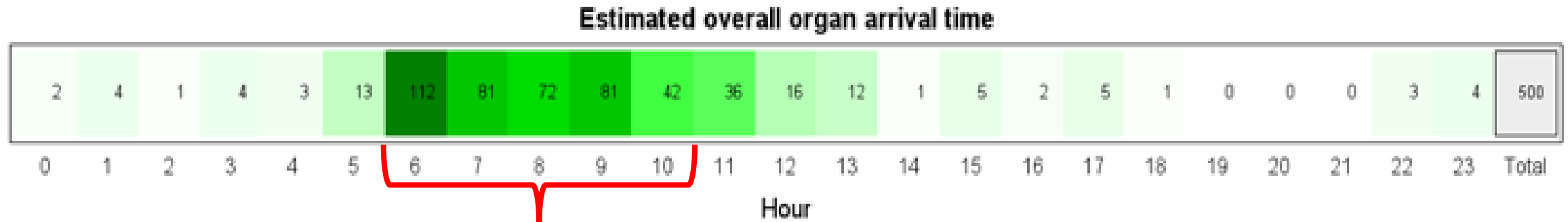
8% (11 donors) priority pathway
donors.
9 with SU liver recipients.
2 required daytime retrievals

69% all organs arrive between
0600-1000.
67% abdominal
85% cardiothoracic

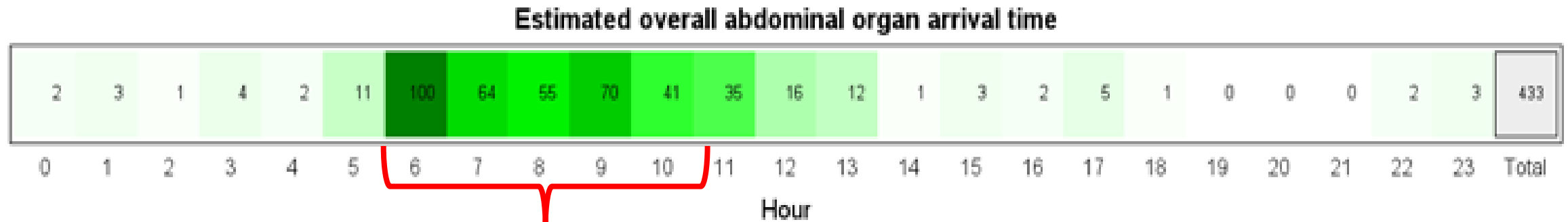
Simulated NORS team arrival time by donor and attendance type



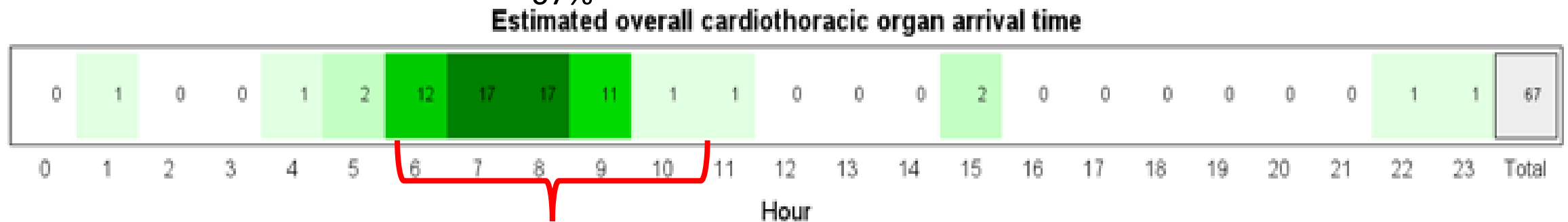
Modelling - Organ Arrival Heatmaps



69%

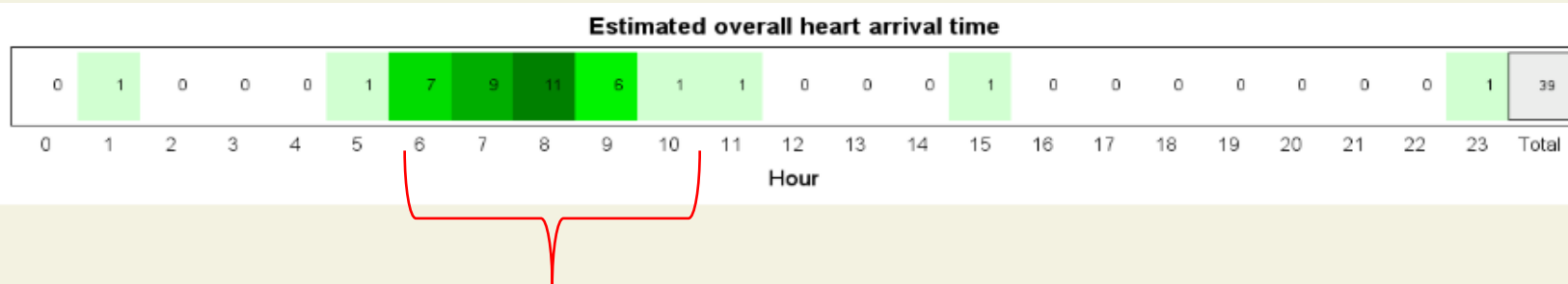


67%



85%

Heart Arrival at Tx centre

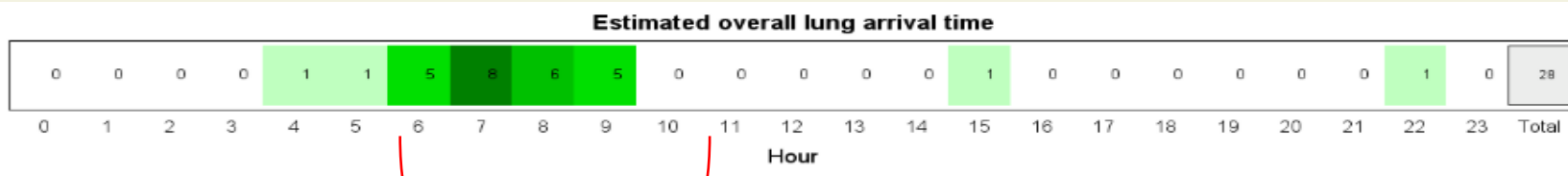


87%

- 3 occasions where CT organ involvement registered between 8am – 4pm and couldn't be considered for retrieval that evening. Of those 3, 2 were DCDH activity
- 87% of hearts arrive at Tx centre between 0600-1000.

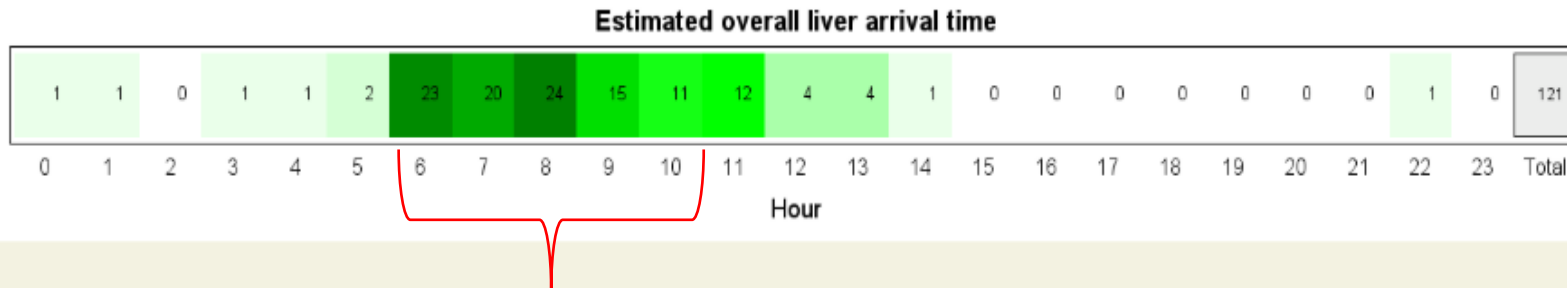
Lung Arrival at Tx centre

- 28 lungs accepted
- 86% of lungs arrive at transplant centre between 0600-1000



86%

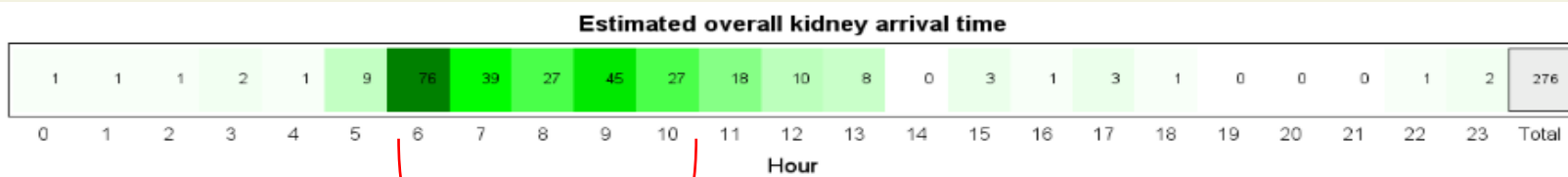
Liver Arrival at Tx centre



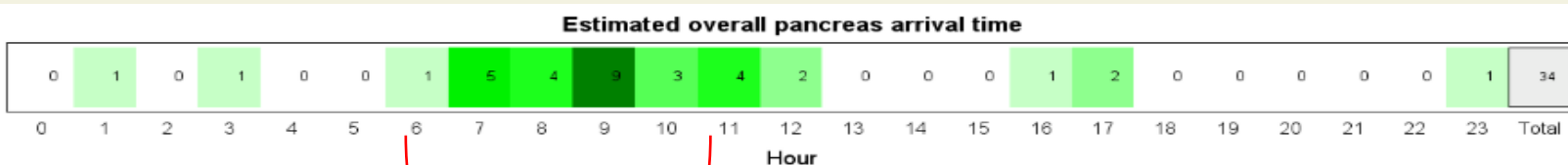
77%

- 121 livers accepted
- 11 Accelerated pathway donors, 9 of which were for SU liver, 2 required daytime retrieval.
- 77% of livers arrive at transplant centre between 0600-1000

Kidney and Pancreas Arrival at Tx centre



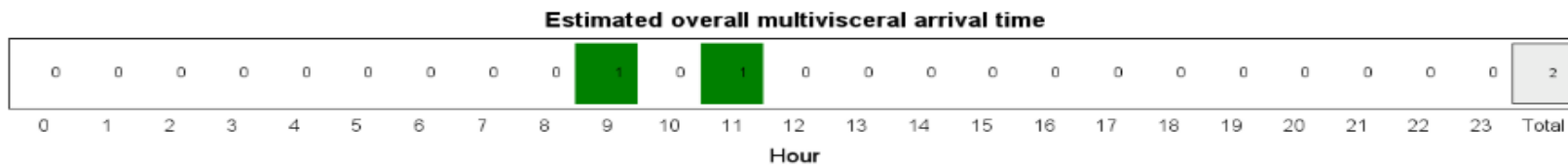
78%



65%

- 276 kidneys accepted
- 11 Accelerated pathway donors, 9 of which were for SU liver, 2 required daytime retrieval.
- 78% of kidneys arrive at transplant centre between 0600-1000
- 34 pancreas accepted
- 65% of pancreas' arrive at transplant centre between 0600-1000

Multivisceral Arrival at Tx centre



- 2 MV cases accepted
- 50% of MV organs arrive at transplant centre between 0600-1000

Flight impact

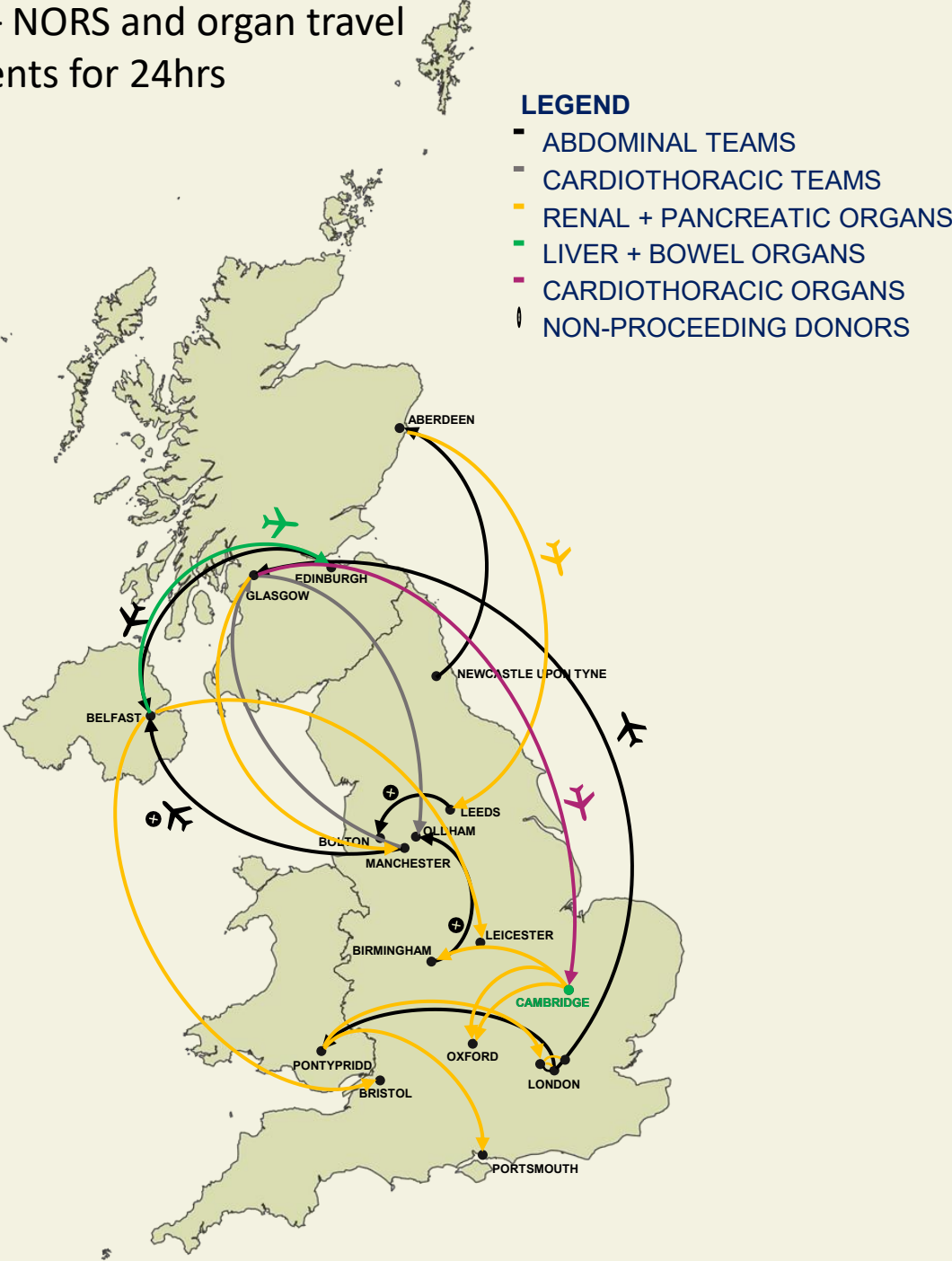
Aim - Better use of resources

Flight type	Actual number of flights	Proposed number of flights	Difference (actual – proposed)
Organ chartered	25	21	-4
Team	19	18	-1
Total	44	39	-5

Overall an 11% reduction in flights

At least £50k saving in flight costs

Example – NORS and organ travel requirements for 24hrs



Shadow modelling Timeline



Discovery and Engagement Phase #1

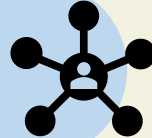
April-June 2025

- Individual centre data available on request
- Anticipate modelling to run until implementation, laying on other operational functions



Phase #2

Apr - July 2025



Phase 2 report

Communicate outcomes and take feedback



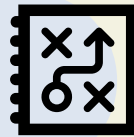
Phase #3

September-December 2025



Phase 4 report

Communicate outcomes and take feedback



Phase #4

Jan – April 25



Phase 3 report

Communicate outcomes and take feedback



SCORE Go-Live

Caring Expert Quality

Thank you



Sustainability and
Certainty in Organ
Retrieval (SCORE) -
ODT Clinical - NHS
Blood and Transplant



FAQs

