

## Midlands Organ Donation Services Team

### Organ Donation and Transplantation 2030: Meeting the Need

In 2024/25, from 232 consented donors the Midlands Organ Donation Services Team facilitated 190 actual solid organ donors resulting in 507 patients receiving a life-saving or life-changing transplant. Data obtained from the UK Transplant Registry.

In addition to the 190 proceeding donors there were 42 consented donors that did not proceed.

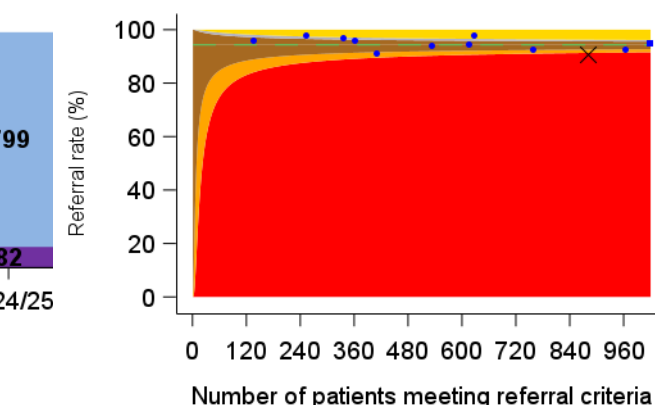
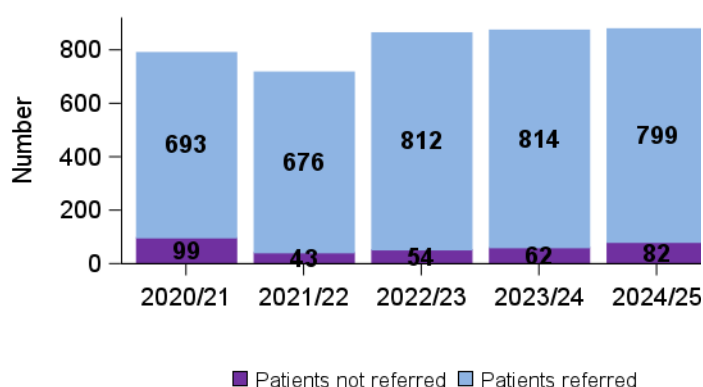
### Best quality of care in organ donation

#### Referral of potential deceased organ donors

**Goal: Every patient who meets the referral criteria should be identified and referred to NHS Blood and Transplant's Organ Donation Service**

**Aim: There should be no purple on the chart**

**Aim: The team (marked with a cross) should fall within Bronze, Silver, or Gold**



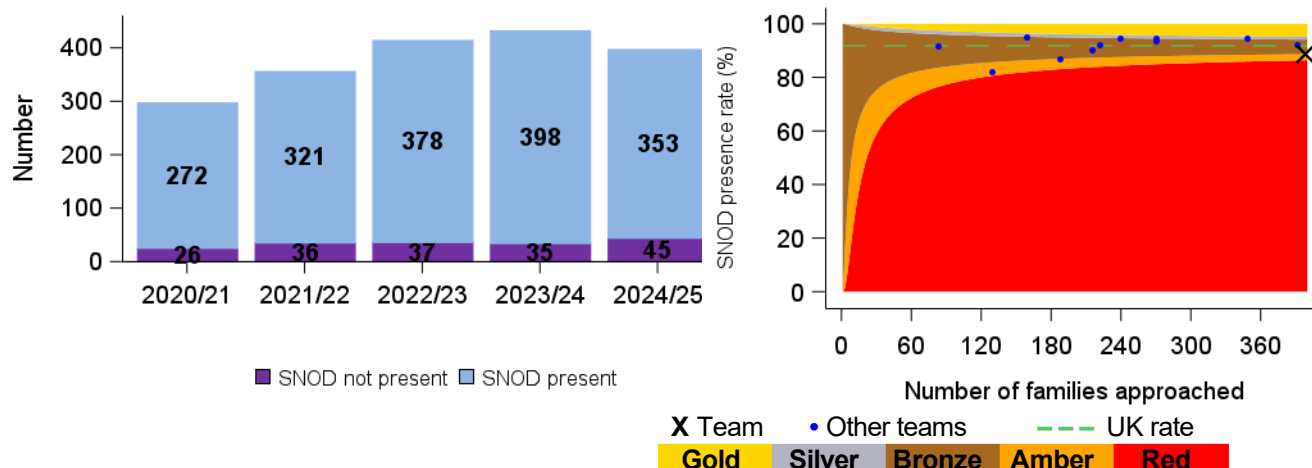
799 potential organ donors were referred to the team during 2024/25. There were 82 occasions where potential organ donors were not referred.

## Presence of Specialist Nurse for Organ Donation

**Goal: A Specialist Nurse for Organ Donation (SNOD) should be present during every organ donation discussion with families**

**Aim: There should be no purple on the chart**

**Aim: The team (marked with a cross) should fall within Bronze, Silver, or Gold**



A SNOD was present for 353 organ donation discussions with families during 2024/25. There were 45 occasions where a SNOD was not present.

## Further information

Further information on potential donors after brain death (DBD) and potential donors after circulatory death (DCD) within the region are shown below, including a UK comparison. Data obtained from the Potential Donor Audit (PDA).

### Key numbers, rates and comparison with UK data, 1 April 2024 - 31 March 2025

	DBD		DCD		Deceased donors	
	Midlands	UK	Midlands	UK	Midlands	UK
Patients meeting organ donation referral criteria <sup>1</sup>	244	1883	706	5503	881	6880
Referred to Organ Donation Service	236	1859	626	5118	799	6486
Referral rate %	<b>B</b> 97%	99%	<b>R</b> 89%	93%	<b>R</b> 91%	94%
Neurological death tested	173	1356				
Testing rate %	<b>B</b> 71%	72%				
Eligible donors <sup>2</sup>	156	1247	506	3735	662	4982
Medically suitable eligible donors <sup>3</sup>	156	1247	319	2077	475	3324
Family approached	138	1084	260	1827	398	2911
Family approached of medically suitable eligible donor	138	1084	256	1799	394	2883
% approached of medically suitable eligible	<b>B</b> 88%	87%	<b>A</b> 80%	87%	<b>A</b> 83%	87%
Family approached and SNOD present	134	1050	219	1622	353	2672
% of approaches where SNOD present	<b>B</b> 97%	97%	<b>A</b> 84%	89%	<b>B</b> 89%	92%
Consent ascertained	93	743	127	970	220	1713
Consent rate %	<b>B</b> 67%	69%	<b>B</b> 49%	53%	<b>B</b> 55%	59%
- Expressed opt in	65	473	92	644	157	1117
- Expressed opt in %	92%	94%	75%	82%	81%	86%
- Deemed Consent	18	216	28	267	46	483
- Deemed Consent %	46%	57%	36%	43%	39%	48%
- Other*	10	54	7	59	17	113
- Other* %	59%	55%	23%	29%	36%	38%
Actual donors (PDA data)	90	694	97	703	187	1398
% of consented donors that became actual donors	97%	93%	76%	72%	85%	82%

<sup>1</sup> DBD - A patient with suspected neurological death

DCD - A patient in whom imminent death is anticipated, ie a patient receiving assisted ventilation, a clinical decision to withdraw treatment has been made and death is anticipated within 4 hours

<sup>2</sup> DBD - Death confirmed by neurological tests and no absolute contraindications to solid organ donation

DCD - Imminent death anticipated and treatment withdrawn with no absolute contraindications to solid organ donation

<sup>3</sup> Medically suitable eligible donor - An eligible donor with no DCD exclusions and not deemed unsuitable by the screening process

\* Includes patients where nation specific deemed criteria are not met and the patient has not expressed a donation decision in accordance with relevant legislation

Note that a patient that meets both the referral criteria for DBD and DCD organ donation is featured in both the DBD and DCD data but will only be counted once in the deceased donors total

Gold Silver Bronze Amber Red

For further information, including definitions, see the latest Potential Donor Audit report and up to date metrics via our Power BI reports at:  
<https://www.odt.nhs.uk/statistics-and-reports/potential-donor-audit-report/>.