

Eastern Organ Donation Services Team

Organ Donation and Transplantation 2030: Meeting the Need

In 2024/25, from 233 consented donors the Eastern Organ Donation Services Team facilitated 169 actual solid organ donors resulting in 413 patients receiving a life-saving or life-changing transplant. Data obtained from the UK Transplant Registry.

In addition to the 169 proceeding donors there were 64 consented donors that did not proceed.

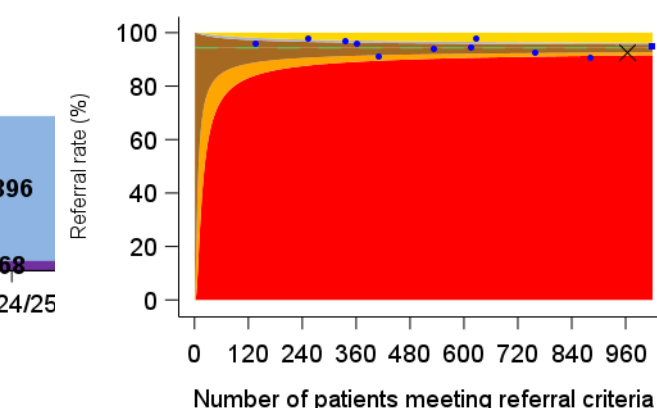
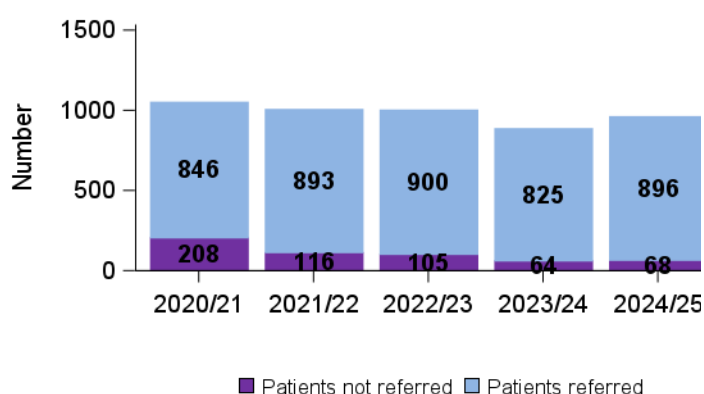
Best quality of care in organ donation

Referral of potential deceased organ donors

Goal: Every patient who meets the referral criteria should be identified and referred to NHS Blood and Transplant's Organ Donation Service

Aim: There should be no purple on the chart

Aim: The team (marked with a cross) should fall within Bronze, Silver, or Gold



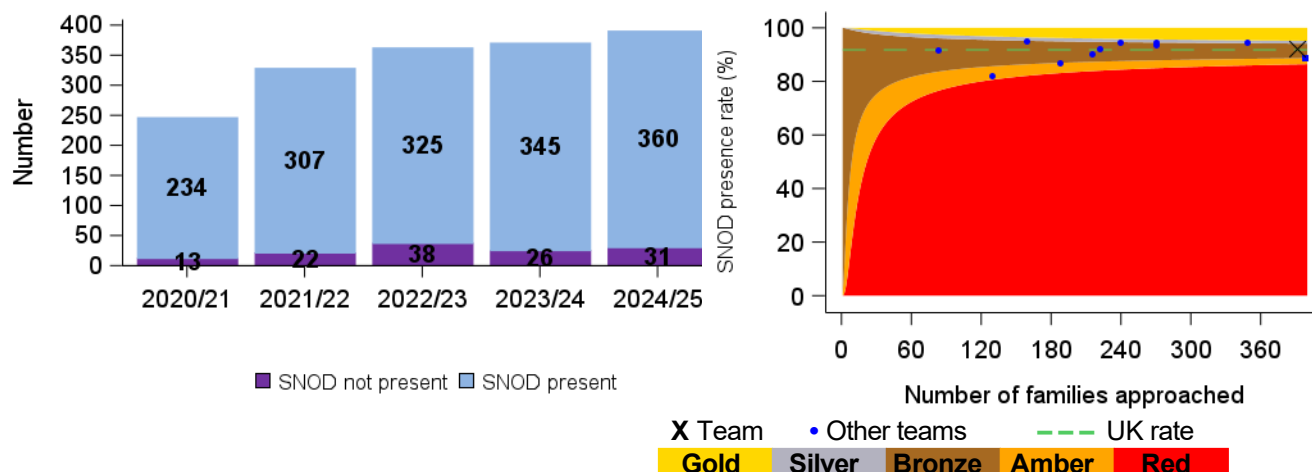
896 potential organ donors were referred to the team during 2024/25. There were 68 occasions where potential organ donors were not referred.

Presence of Specialist Nurse for Organ Donation

Goal: A Specialist Nurse for Organ Donation (SNOD) should be present during every organ donation discussion with families

Aim: There should be no purple on the chart

Aim: The team (marked with a cross) should fall within Bronze, Silver, or Gold



A SNOD was present for 360 organ donation discussions with families during 2024/25. There were 31 occasions where a SNOD was not present.

Further information

Further information on potential donors after brain death (DBD) and potential donors after circulatory death (DCD) within the region are shown below, including a UK comparison. Data obtained from the Potential Donor Audit (PDA).

Key numbers, rates and comparison with UK data, 1 April 2024 - 31 March 2025

	DBD		DCD		Deceased donors	
	Eastern	UK	Eastern	UK	Eastern	UK
Patients meeting organ donation referral criteria ¹	173	1883	843	5503	964	6880
Referred to Organ Donation Service	169	1859	777	5118	896	6486
<i>Referral rate %</i>	B 98%	99%	B 92%	93%	B 93%	94%
Neurological death tested	116	1356				
<i>Testing rate %</i>	B 67%	72%				
Eligible donors ²	109	1247	532	3735	641	4982
Medically suitable eligible donors ³	109	1247	319	2077	428	3324
Family approached	98	1084	293	1827	391	2911
Family approached of medically suitable eligible donor	98	1084	288	1799	386	2883
<i>% approached of medically suitable eligible</i>	B 90%	87%	S 90%	87%	S 90%	87%
Family approached and SNOD present	96	1050	264	1622	360	2672
<i>% of approaches where SNOD present</i>	B 98%	97%	B 90%	89%	B 92%	92%
Consent ascertained	67	743	157	970	224	1713
<i>Consent rate %</i>	B 68%	69%	B 54%	53%	B 57%	59%
- Expressed opt in	43	473	103	644	146	1117
- <i>Expressed opt in %</i>	88%	94%	84%	82%	85%	86%
- Deemed Consent	20	216	48	267	68	483
- <i>Deemed Consent %</i>	63%	57%	41%	43%	46%	48%
- Other*	4	54	6	59	10	113
- <i>Other* %</i>	67%	55%	22%	29%	30%	38%
Actual donors (PDA data)	60	694	108	703	168	1398
<i>% of consented donors that became actual donors</i>	90%	93%	69%	72%	75%	82%

¹ DBD - A patient with suspected neurological death

DCD - A patient in whom imminent death is anticipated, ie a patient receiving assisted ventilation, a clinical decision to withdraw treatment has been made and death is anticipated within 4 hours

² DBD - Death confirmed by neurological tests and no absolute contraindications to solid organ donation

DCD - Imminent death anticipated and treatment withdrawn with no absolute contraindications to solid organ donation

³ Medically suitable eligible donor - An eligible donor with no DCD exclusions and not deemed unsuitable by the screening process

* Includes patients where nation specific deemed criteria are not met and the patient has not expressed a donation decision in accordance with relevant legislation

Note that a patient that meets both the referral criteria for DBD and DCD organ donation is featured in both the DBD and DCD data but will only be counted once in the deceased donors total

Gold Silver Bronze Amber Red

For further information, including definitions, see the latest Potential Donor Audit report and up to date metrics via our Power BI reports at:
<https://www.odt.nhs.uk/statistics-and-reports/potential-donor-audit-report/>.