

# Cardiothoracic Activity

## Key messages

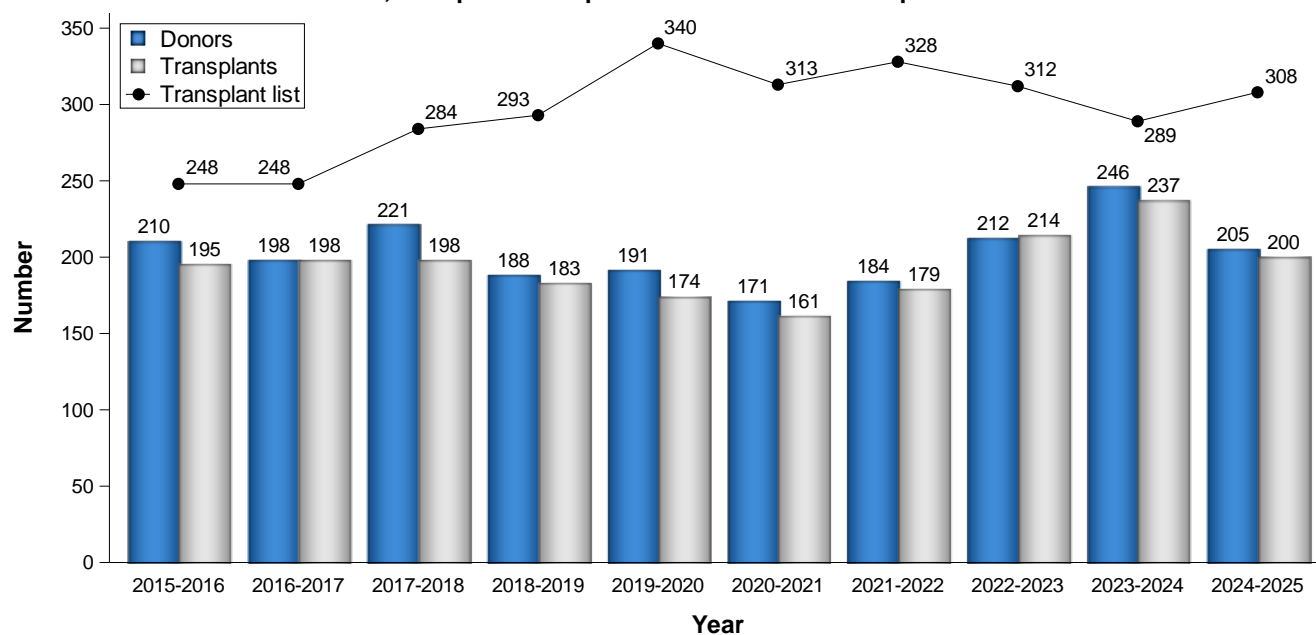
- At 31 March 2025, there were 308 patients on the active heart transplant list, 183 on the lung list and 11 on the heart-lung list
- Of the 676 organ donors after brain death during 2024-2025, 144 (21%) donated their heart and 98 (14%) donated at least one lung
- The number of heart transplants decreased by 16% to 200; 47% of these were urgent heart transplants, 33% were super-urgent, and 20% were non-urgent
- The number of lung and heart-lung transplants increased by 8% this year to 151; 32% of these were urgent lung transplants, 2% were super-urgent, and 64% were non-urgent.
- There were 57 DCD heart transplants in 2024-2025, 8 less than the previous year.

## 7.1 Overview

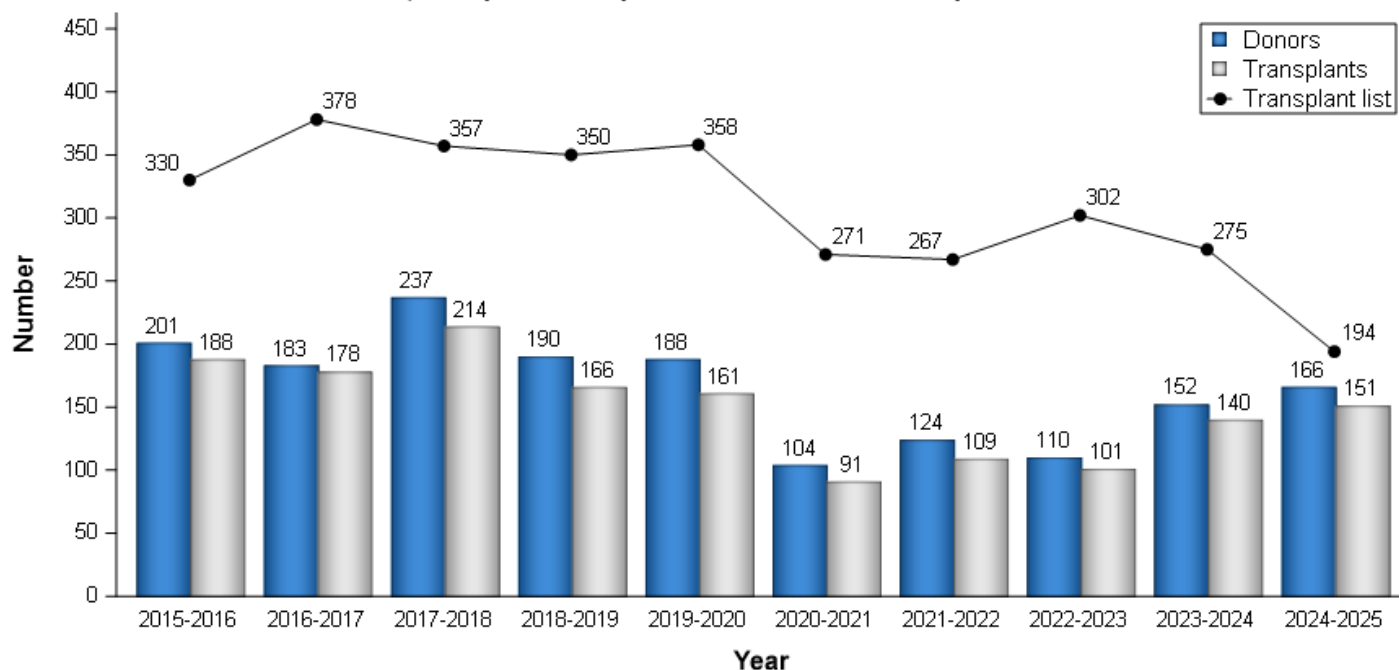
Last year the number of heart transplants decreased by 16% to 200 compared with 2023-2024, and the number of lung or heart-lung transplants increased by 8% to 151. There was a decrease in the lung transplant list and an increase in the heart transplant list compared with 2023-2024. The number of patients active on the heart transplant list at year end has increased by 24% since 2016, while the number of patients active on the lung or heart-lung transplant list has fallen by 41% since 2016.

A summary of the deceased donor cardiothoracic activity from 1 April 2015 to 31 March 2025 is shown in **Figure 7.1** for heart activity and **Figure 7.2** for lung activity. Donors who donate both heart and lung(s) are included in both figures, but heart-lung block transplants and patients active on the transplant list for a heart-lung block are only included in **Figure 7.2**.

**Figure 7.1 Deceased donor heart programme in the UK, 1 April 2015 - 31 March 2025,  
Number of donors, transplants and patients on the active transplant list at 31 March**



**Figure 7.2 Deceased donor lung and heart-lung programme in the UK, 1 April 2015 - 31 March 2025,  
Number of donors, transplants and patients on the active transplant list at 31 March**



## 7.2 Transplant list

**Table 7.1** shows the number of patients on the active transplant lists at 31 March 2025 by centre. There were five patients waiting on the super-urgent heart transplant list, and 48 patients waiting on the urgent heart transplant list. There were no patients waiting on the super-urgent lung transplant list, and 25 patients waiting on the urgent lung transplant list. Overall, Newcastle and Harefield had the largest cardiothoracic transplant waiting lists on 31 March 2025.

Table 7.1 Patients on the cardiothoracic transplant lists at 31 March 2025 (2024) in the UK, by centre														
Centre	Active transplant lists													
	Non-urgent		Heart Urgent		Super-urgent		Heart-lung		Non-urgent		Lung Urgent		Super-urgent	
<b>Adult</b>														
Birmingham	43	(34)	2	(5)	1	(3)	1	(0)	35	(37)	7	(0)	0	(0)
Glasgow	18	(13)	4	(3)	0	(0)	0	(0)	0	(0)	0	(0)	0	(0)
Great Ormond Street	1	(0)	0	(1)	0	(0)	1	(0)	0	(0)	0	(1)	0	(0)
Harefield	45	(47)	7	(3)	1	(1)	0	(0)	40	(54)	5	(1)	0	(0)
Manchester	28	(34)	2	(1)	0	(1)	1	(2)	38	(41)	3	(1)	0	(0)
Newcastle	58	(56)	14	(9)	1	(1)	4	(2)	26	(91)	7	(3)	0	(0)
Papworth	41	(40)	2	(3)	2	(0)	4	(2)	13	(28)	1	(0)	0	(0)
<b>TOTAL</b>	<b>234</b>	<b>(224)</b>	<b>31</b>	<b>(25)</b>	<b>5</b>	<b>(6)</b>	<b>11</b>	<b>(6)</b>	<b>152</b>	<b>(251)</b>	<b>23</b>	<b>(6)</b>	<b>0</b>	<b>(0)</b>
<b>Paediatric</b>														
Great Ormond Street	7	(12)	8	(5)	0	(0)	0	(1)	6	(7)	2	(1)	0	(0)
Newcastle	14	(12)	9	(5)	0	(0)	0	(1)	0	(2)	0	(0)	0	(0)
<b>TOTAL</b>	<b>21</b>	<b>(24)</b>	<b>17</b>	<b>(10)</b>	<b>0</b>	<b>(0)</b>	<b>0</b>	<b>(2)</b>	<b>6</b>	<b>(9)</b>	<b>2</b>	<b>(1)</b>	<b>0</b>	<b>(0)</b>

During 2024-2025, there were 341 registrations onto the heart transplant list, 7 registrations onto the heart-lung transplant list and 189 onto the lung transplant list. Registration outcomes as at 31 March 2025 for patients on the list at 1 April 2024 and those joining the list during the year are shown in **Table 7.2**.

<b>Table 7.2 Cardiothoracic organ transplant lists and new registrations in the UK, 1 April 2024 - 31 March 2025</b>						
<b>Outcome of patient at 31 March 2025</b>	Active and suspended patients at 1 April 2024		New registrations in 2024-2025 <sup>1</sup>		<b>TOTAL</b>	
	N	%	N	%	N	%
<b>Heart transplant list</b>						
Remained active/suspended	223	62	156	46	379	54
Transplanted	57	16	138	40	195	28
Removed	70	19	35	10	105	15
Died	11	3	12	4	23	3
<b>TOTAL</b>	<b>361</b>		<b>341</b>		<b>702</b>	
<b>Heart-lung transplant list</b>						
Remained active/suspended	6	55	6	86	12	67
Transplanted <sup>2</sup>	2	18	0	0	2	11
Removed	2	18	0	0	2	11
Died	1	9	1	14	2	11
<b>TOTAL</b>	<b>11</b>		<b>7</b>		<b>18</b>	
<b>Lung transplant list</b>						
Remained active/suspended	111	45	83	44	194	45
Transplanted	65	26	83	44	148	34
Removed	48	20	13	7	61	14
Died	22	9	10	5	32	7
<b>TOTAL</b>	<b>246</b>		<b>189</b>		<b>435</b>	
<sup>1</sup> Includes re-registrations for second or subsequent patients						
<sup>2</sup> Patients may have received heart, lung, or heart-lung						

**Table 7.3** shows the transplant list rates per million population by country/NHS region of patient's residence. The overall UK heart transplant list rate at 31 March 2025 was 4.6 pmp and ranged from 3.0 to 5.0 across NHS regions. The overall UK lung transplant list rate was 2.9 pmp and ranged from 1.6 to 4.0 across NHS regions.

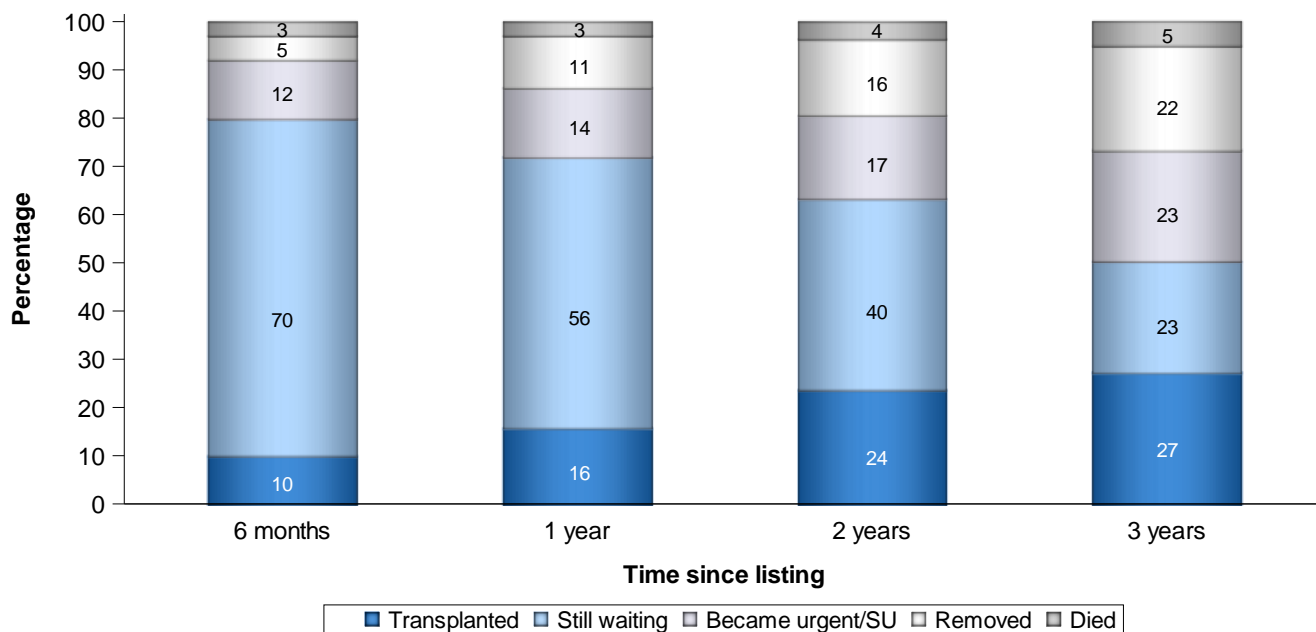
<b>Table 7.3 Active cardiothoracic transplant list at 31 March, by country/NHS region of patient residence</b>								
<b>Country/ NHS region of residence</b>	<b>Heart transplant list (pmp)</b>				<b>Lung transplant list (pmp)</b>			
	2025		2024		2025		2024	
North East and Yorkshire	41	(5.0)	42	(5.1)	18	(2.2)	55	(6.7)
North West	33	(4.4)	29	(3.9)	30	(4.0)	36	(4.8)
Midlands	52	(4.7)	49	(4.5)	42	(3.8)	39	(3.6)
East of England	19	(3.0)	18	(2.8)	10	(1.6)	14	(2.2)
London	34	(3.8)	27	(3.0)	21	(2.4)	27	(3.0)
South East	45	(4.8)	43	(4.6)	15	(1.6)	24	(2.6)
South West	20	(3.5)	23	(4.0)	17	(3.0)	21	(3.6)
<b>England</b>	<b>244</b>	<b>(4.3)</b>	<b>231</b>	<b>(4.0)</b>	<b>153</b>	<b>(2.7)</b>	<b>216</b>	<b>(3.8)</b>
<b>Isle of Man</b>	<b>0</b>	<b>(0.0)</b>	<b>0</b>	<b>(0.0)</b>	<b>0</b>	<b>(0.0)</b>	<b>0</b>	<b>(0.0)</b>
<b>Channel Islands</b>	<b>0</b>	<b>(0.0)</b>	<b>0</b>	<b>(0.0)</b>	<b>1</b>	<b>(5.9)</b>	<b>0</b>	<b>(0.0)</b>
<b>Wales</b>	<b>14</b>	<b>(4.5)</b>	<b>13</b>	<b>(4.2)</b>	<b>16</b>	<b>(5.1)</b>	<b>10</b>	<b>(3.2)</b>
<b>Scotland</b>	<b>30</b>	<b>(5.5)</b>	<b>24</b>	<b>(4.4)</b>	<b>16</b>	<b>(2.9)</b>	<b>33</b>	<b>(6.1)</b>
<b>Northern Ireland</b>	<b>18</b>	<b>(9.4)</b>	<b>19</b>	<b>(9.9)</b>	<b>8</b>	<b>(4.2)</b>	<b>15</b>	<b>(7.9)</b>
<b>TOTAL <sup>1,2</sup></b>	<b>308</b>	<b>(4.6)</b>	<b>289</b>	<b>(4.3)</b>	<b>194</b>	<b>(2.9)</b>	<b>275</b>	<b>(4.1)</b>

<sup>1</sup>Includes heart patients in 2025 (2024) residing in: Unspecified UK 1 (0); Republic of Ireland 1 (2)  
<sup>2</sup>Includes lung patients in 2025 (2024) residing in: Unspecified UK 0 (1)

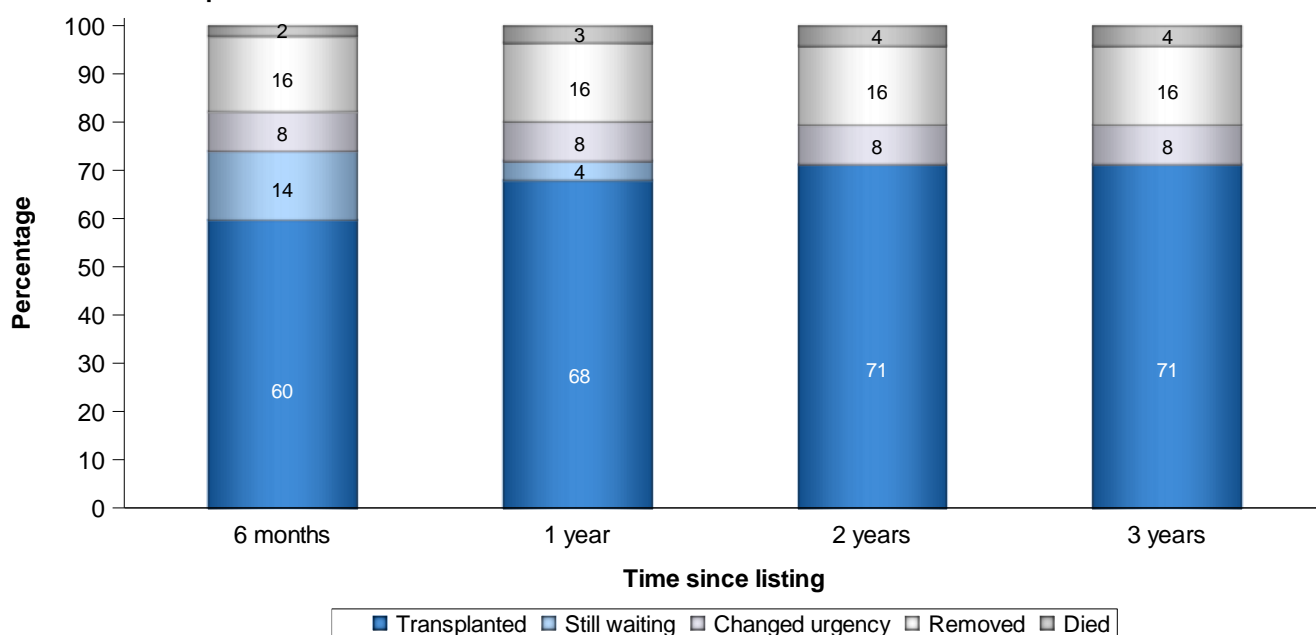
The transplant list outcomes for adult patients listed for a cardiothoracic organ transplant between 1 April 2021 and 31 March 2022 are summarised in **Figure 7.3**, **Figure 7.4** and **Figure 7.5**, for non-urgent heart, urgent heart and non-urgent lung registrations, respectively. These show the proportion of patients transplanted, still waiting, removed and those who died within six months, one year, two years and three years after joining the non-urgent or urgent heart list or the lung list, respectively. Within six months of listing, 10% of non-urgent heart patients were transplanted while 3% had died, compared with 60% transplanted and 2% died for urgent heart patients. Of those listed for a non-urgent lung transplant, 17% were transplanted within six months, rising to 43% after three years, however at three years, 16% had died. The patients removed from these lists may have subsequently died.

The post-registration outcomes of super-urgent heart, super-urgent lung and urgent lung registrations are not presented due to the small number of patients who start off on these lists.

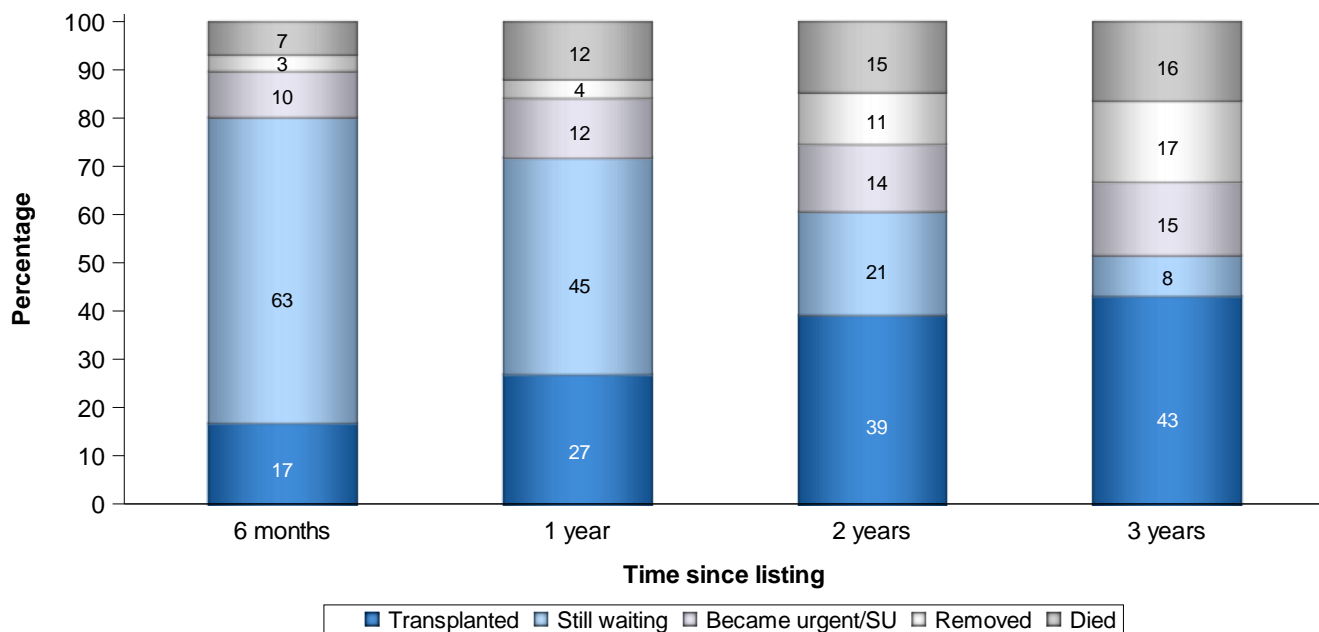
**Figure 7.3 Post-registration outcome for 139 first non-urgent heart only registrations made in the UK, 1 April 2021 - 31 March 2022**



**Figure 7.4 Post-registration outcome for 147 first urgent heart only registrations made in the UK, 1 April 2021 - 31 March 2022**



**Figure 7.5** Post-registration outcome for 178 first non-urgent lung only registrations made in the UK, 1 April 2021 - 31 March 2022



**Table 7.4** and **Table 7.5** show the median waiting time to cardiothoracic organ transplant by blood group and ethnicity of patient, respectively, for patients registered between 1 April 2016 and 31 March 2022. The overall median waiting time to non-urgent heart transplantation for adult patients who were never on the urgent or super-urgent list was 6 years. For adult patients who had been on the urgent list, the overall median time on the urgent list before transplant was 50 days. For adult patients who had been on the super-urgent list ('ever super-urgent'), the overall median time on the super-urgent list before transplant was 14 days.

The overall median waiting time to non-urgent lung transplantation for adult patients who were never on the urgent or super-urgent list, was 584 days, but for blood group O patients was longer, at 840 days. The overall median time to urgent adult lung transplant was 23 days. Median waiting time is not calculated for adult super-urgent lung patients due to the small number of registrations.

For paediatric heart patients, the median waiting time was 754 days for non-urgent registrations and 125 days for urgent registrations (this is not broken down by blood group or ethnicity and is not presented for super-urgent patients due to low numbers). The overall median waiting time to non-urgent lung transplantation for paediatric patients who were never on the urgent or super-urgent list, was 225 days. Median waiting time is not calculated for paediatric urgent or super-urgent lung patients due to the small number of registrations. Note that these waiting time estimates are not adjusted for other relevant factors which may be influential and which may differ across blood or ethnic groups.



**Table 7.4 Median waiting time to cardiothoracic transplant in the UK, for patients registered 1 April 2016 - 31 March 2022**

Blood group	Number of patients registered	Waiting time (days)	
		Median	95% Confidence interval
<b>Adult non-urgent heart<sup>1</sup></b>			
O	225	-	-
A	254	1258	713 - 1803
B	63	1269	419 - 2119
AB	17	403	0 - 960
<b>TOTAL</b>	<b>559</b>	<b>2193</b>	-
<b>Adult urgent heart<sup>2</sup></b>			
O	304	70	54 - 86
A	294	35	28 - 42
B	82	64	42 - 86
AB	31	30	18 - 42
<b>TOTAL</b>	<b>711</b>	<b>50</b>	<b>43 - 57</b>
<b>Adult super-urgent heart</b>	<b>227</b>	<b>14</b>	<b>11 - 17</b>
<b>Paediatric non-urgent heart<sup>1</sup></b>	<b>61</b>	<b>754</b>	<b>399 - 1109</b>
<b>Paediatric urgent heart<sup>2</sup></b>	<b>209</b>	<b>125</b>	<b>85 - 165</b>
<b>Adult non-urgent lung<sup>1</sup></b>			
O	549	840	645 - 1035
A	501	357	268 - 446
B	114	640	305 - 975
AB	45	267	96 - 438
<b>TOTAL</b>	<b>1209</b>	<b>584</b>	<b>518 - 650</b>
<b>Adult urgent lung<sup>2</sup></b>	<b>188</b>	<b>23</b>	<b>16 - 30</b>
<b>Paediatric non-urgent lung<sup>1</sup></b>	<b>23</b>	<b>225</b>	<b>33 - 417</b>

- Median and/or 95% confidence interval cannot be estimated due to insufficient numbers of patients transplanted

<sup>1</sup> Excludes patients that were moved to the urgent/super-urgent lists

<sup>2</sup> Excludes patients that were moved to the super-urgent list

**Table 7.5 Median waiting time to cardiothoracic transplant in the UK, for patients registered 1 April 2016 - 31 March 2022**

Ethnicity	Number of patients registered	Waiting time (days)	
		Median	95% Confidence interval
<b>Adult non-urgent heart<sup>1</sup></b>			
White	477	1828	1285 - 2371
Asian	46	-	-
Black	16	-	-
Other	10	1146	0 - 2439
<b>TOTAL<sup>3</sup></b>	<b>559</b>	<b>2193</b>	-
<b>Adult urgent heart<sup>2</sup></b>			
White	585	51	44 - 58
Asian	71	53	30 - 76
Black	37	32	0 - 68
Other	10	59	11 - 107
<b>TOTAL<sup>4</sup></b>	<b>711</b>	<b>50</b>	<b>43 - 57</b>
<b>Adult super-urgent heart</b>	<b>227</b>	<b>14</b>	<b>11 - 17</b>
<b>Paediatric non-urgent heart<sup>1</sup></b>	<b>61</b>	<b>754</b>	<b>399 - 1109</b>
<b>Paediatric urgent heart</b>	<b>209</b>	<b>125</b>	<b>85 - 165</b>
<b>Adult non-urgent lung<sup>1</sup></b>			
White	1114	566	496 - 636
Asian	60	-	-
Black	23	1171	687 - 1655
Other	9	-	-
<b>TOTAL<sup>5</sup></b>	<b>1209</b>	<b>584</b>	<b>518 - 650</b>
<b>Adult urgent lung<sup>2</sup></b>	<b>188</b>	<b>23</b>	<b>16 - 30</b>
<b>Paediatric non-urgent lung<sup>1</sup></b>	<b>23</b>	<b>225</b>	<b>33 - 417</b>

- Median and/or 95% confidence interval cannot be estimated due to insufficient numbers of patients transplanted

<sup>1</sup> Excludes patients that were moved to the urgent/super-urgent lists

<sup>2</sup> Excludes patients that were moved to the super-urgent list

<sup>3</sup> Includes 10 patients whose ethnicity was not reported

<sup>4</sup> Includes 8 patients whose ethnicity was not reported

<sup>5</sup> Includes 3 patients whose ethnicity was not reported

### 7.3 Donor and organ supply

**Table 7.6** shows the number of deceased organ donors identified in each heart allocation zone, and the number of donors where the heart was retrieved and transplanted, by donor type. It also shows the number in each zone who donated their lung(s) as well as their heart. Of the 676 DBD donors during 2024-2025, 144 (21%) donated their heart, with 143 transplanted ("utilised"). Of the 727 DCD donors, 61 (8%) donated their heart, with 57 transplanted ("utilised").

**Table 7.7** shows the number of deceased organ donors identified in each lung allocation zone, and the number of donors where at least one lung was retrieved and transplanted, by donor type. It also shows the number in each zone who donated their heart as well as their lung(s). Of the 676 DBD donors, 98 (14%) donated at least one lung, with 94 proceeding to transplantation ("utilised"). Of the 727 DCD donors, 68 (9%) donated at least one lung, with 60 proceeding to transplantation ("utilised").

<b>Table 7.6 Heart organ donation and retrieval rates in the UK, 1 April 2024 - 31 March 2025, by heart allocation zone and donor type</b>								
<b>Heart Allocation Zone</b>	<b>Number of donors</b>	<b>DBD</b>			<b>Number of donors</b>	<b>DCD</b>		
		<b>Number of heart donors (utilised)</b>	<b>Number donated heart and lungs</b>			<b>Number of heart donors (utilised)</b>	<b>Number donated heart and lungs</b>	
Birmingham	135	39 (39)	9	125	13 (12)	4		
Glasgow	76	18 (18)	5	90	6 (4)	1		
Harefield	163	28 (28)	7	171	8 (8)	1		
Manchester	77	17 (17)	5	96	13 (12)	3		
Newcastle	99	22 (22)	5	91	10 (10)	3		
Papworth	126	20 (19)	6	154	11 (11)	4		
<b>TOTAL</b>	<b>676</b>	<b>144 (143)</b>	<b>37</b>	<b>727</b>	<b>61 (57)</b>	<b>16</b>		

<b>Table 7.7 Lung organ donation and retrieval rates in the UK, 1 April 2024 - 31 March 2025, by lung allocation zone and donor type</b>								
<b>Lung Allocation Zone</b>	<b>Number of donors</b>	<b>DBD</b>			<b>Number of donors</b>	<b>DCD</b>		
		<b>Number of lung donors (utilised)</b>	<b>Number donated heart and lungs</b>			<b>Number of lung donors (utilised)</b>	<b>Number donated heart and lungs</b>	
Birmingham	131	21 (20)	7	149	8 (8)	4		
Harefield	149	16 (16)	7	156	14 (12)	0		
Manchester	90	17 (17)	8	101	10 (9)	4		
Newcastle	147	17 (15)	6	144	12 (9)	3		
Papworth	159	27 (26)	9	177	24 (22)	5		
<b>TOTAL</b>	<b>676</b>	<b>98 (94)</b>	<b>37</b>	<b>727</b>	<b>68 (60)</b>	<b>16</b>		

The rates per million population for cardiothoracic organ donors are shown in **Table 7.8** by country/NHS region of residence. No adjustments have been made for potential demographic differences in populations. The overall heart donor rate was 3.0 pmp in 2024-2025 and varied across NHS regions from 1.9 pmp to 3.5 pmp. For lungs, the overall donor rate was 2.5 pmp in 2024-2025 and varied across NHS regions from 1.7 pmp to 3.6 pmp.

Table 7.8 Cardiothoracic donation rates for deceased donors in the UK, 1 April 2024 - 31 March 2025, by country/ NHS region												
Country/ NHS region of residence	DBD		Heart (pmp)		TOTAL		DBD		Lung(s) (pmp)		TOTAL	
			DCD						DCD			
North East and Yorkshire	17	(2.1)	10	(1.2)	27	(3.3)	9	(1.1)	10	(1.2)	19	(2.3)
North West	11	(1.5)	5	(0.7)	16	(2.1)	8	(1.1)	5	(0.7)	13	(1.7)
Midlands	27	(2.5)	11	(1.0)	38	(3.5)	16	(1.5)	6	(0.5)	22	(2.0)
East of England	7	(1.1)	5	(0.8)	12	(1.9)	8	(1.3)	15	(2.3)	23	(3.6)
London	14	(1.6)	6	(0.7)	20	(2.3)	9	(1.0)	7	(0.8)	16	(1.8)
South East	19	(2.0)	6	(0.6)	25	(2.7)	12	(1.3)	11	(1.2)	23	(2.5)
South West	12	(2.1)	6	(1.0)	18	(3.1)	12	(2.1)	5	(0.9)	17	(3.0)
England	107	(1.9)	49	(0.9)	156	(2.7)	74	(1.3)	59	(1.0)	133	(2.3)
Isle of Man	0	(0.0)	0	(0.0)	0	(0.0)	0	(0.0)	0	(0.0)	0	(0.0)
Channel Islands	1	(5.9)	0	(0.0)	1	(5.9)	0	(0.0)	0	(0.0)	0	(0.0)
Wales	11	(3.5)	3	(1.0)	14	(4.5)	4	(1.3)	1	(0.3)	5	(1.6)
Scotland	11	(2.0)	2	(0.4)	13	(2.4)	9	(1.7)	3	(0.6)	12	(2.2)
Northern Ireland	5	(2.6)	3	(1.6)	8	(4.2)	2	(1.0)	2	(1.0)	4	(2.1)
TOTAL <sup>1</sup>	144	(2.1)	61	(0.9)	205	(3.0)	98	(1.4)	68	(1.0)	166	(2.5)
<sup>1</sup> Includes 25 donors with unknown UK postcode (9 DBD heart, 4 DCD heart, 9 DBD lung(s) and 3 DCD lung(s))												

## 7.4 Transplants

The number of cardiothoracic organ transplants by recipient country/NHS region of residence is shown in **Table 7.9**. No adjustments have been made for potential demographic differences in populations. The heart transplant rate ranged from 2.0 to 3.2 pmp across NHS regions and overall was 3.0 pmp. The lung transplant rate ranged from 1.1 to 3.0 pmp across NHS regions and overall was 2.2 pmp. Lung transplant rates include a small number of heart-lung transplants.

Table 7.9 Cardiothoracic transplant rates per million population (pmp) in the UK, 1 April 2024 - 31 March 2025, by country/ NHS region												
Country/ NHS region of residence	DBD		Heart (pmp)		TOTAL		DBD		Lung(s) (pmp)		TOTAL	
			DCD						DCD			
North East and Yorkshire	16	(1.9)	7	(0.9)	23	(2.8)	12	(1.5)	6	(0.7)	18	(2.2)
North West	13	(1.7)	7	(0.9)	20	(2.7)	14	(1.9)	4	(0.5)	18	(2.4)
Midlands	21	(1.9)	10	(0.9)	31	(2.8)	16	(1.5)	11	(1.0)	27	(2.5)
East of England	9	(1.4)	4	(0.6)	13	(2.0)	8	(1.3)	11	(1.7)	19	(3.0)
London	13	(1.5)	7	(0.8)	20	(2.3)	7	(0.8)	3	(0.3)	10	(1.1)
South East	22	(2.3)	8	(0.9)	30	(3.2)	13	(1.4)	7	(0.7)	20	(2.1)
South West	13	(2.3)	1	(0.2)	14	(2.4)	10	(1.7)	5	(0.9)	15	(2.6)
England	107	(1.9)	44	(0.8)	151	(2.6)	80	(1.4)	47	(0.8)	127	(2.2)
Isle of Man	0	(0.0)	0	(0.0)	0	(0.0)	0	(0.0)	0	(0.0)	0	(0.0)
Channel Islands	0	(0.0)	0	(0.0)	0	(0.0)	0	(0.0)	0	(0.0)	0	(0.0)
Wales	8	(2.6)	1	(0.3)	9	(2.9)	6	(1.9)	2	(0.6)	8	(2.6)
Scotland	27	(5.0)	8	(1.5)	35	(6.4)	4	(0.7)	7	(1.3)	11	(2.0)
Northern Ireland	0	(0.0)	4	(2.1)	4	(2.1)	2	(1.0)	3	(1.6)	5	(2.6)
TOTAL <sup>1</sup>	143	(2.1)	57	(0.8)	200	(3.0)	92	(1.4)	59	(0.9)	151	(2.2)
<sup>1</sup> Includes 1 DBD heart recipient with an unknown UK postcode												

**Table 7.10** and **Table 7.11** show cardiothoracic organ transplant activity for each centre by urgency status and donor type, respectively. In 2024-2025, a total of 351 transplants were carried out; a decrease of 7% on 2023-2024. Of these, 200 were heart transplants, of which 161 (80%) were urgent or super-urgent. There was a total of 151 lung or heart-lung transplants, of which 51 (34%) were urgent or super-urgent transplants. Of the 200 heart transplants, 143 (72%) were from donors after brain stem death and 57 (28%) from donors after circulatory death. Of the total number of lung or heart-lung transplants, 92 (61%) were from donors after brain stem death and 59 (39%) from donors after circulatory death.

**Table 7.10 Cardiothoracic transplants from deceased donors, 1 April 2024 - 31 March 2025 (2023 - 2024)**  
by age group, centre, transplant type and urgency

Transplant centre	Transplant type														TOTAL	
	Non-urgent		Heart Urgent		Super-urgent		Heart-lung		Non-urgent		Lung Urgent		Super-urgent			
Adult																
Birmingham	5	(9)	12	(15)	9	(11)	1	(1)	18	(12)	8	(4)	0	(0)	53	(52)
Glasgow	2	(9)	18	(16)	9	(7)	0	(0)	0	(0)	0	(0)	0	(0)	29	(32)
Great Ormond Street	1	(1)	0	(1)	0	(0)	0	(0)	0	(0)	2	(0)	0	(0)	3	(2)
Harefield	6	(7)	11	(26)	19	(11)	0	(1)	18	(24)	7	(4)	1	(0)	62	(73)
Manchester	8	(4)	13	(6)	6	(9)	0	(0)	19	(20)	8	(4)	0	(0)	54	(43)
Newcastle	5	(4)	15	(24)	4	(4)	1	(1)	12	(16)	12	(7)	0	(0)	49	(56)
Papworth	10	(16)	12	(16)	9	(6)	0	(1)	30	(35)	9	(4)	2	(1)	72	(79)
TOTAL	37	(50)	81	(104)	56	(48)	2	(4)	97	(107)	46	(23)	3	(1)	322	(337)
Paediatric <sup>1</sup>																
Great Ormond Street	2	(7)	6	(11)	7	(3)	0	(1)	0	(2)	2	(2)	0	(0)	17	(26)
Newcastle	0	(3)	7	(10)	3	(1)	0	(0)	1	(0)	0	(0)	0	(0)	11	(14)
Papworth	0	(0)	0	(0)	1	(0)	0	(0)	0	(0)	0	(0)	0	(0)	1	(0)
TOTAL	2	(10)	13	(21)	11	(4)	0	(1)	1	(2)	2	(2)	0	(0)	29	(40)

<sup>1</sup> Paediatric recipients are aged under 16 years at time of transplant

**Table 7.11 Cardiothoracic transplants from deceased donors, 1 April 2024 - 31 March 2025 (2023 - 2024) by age group, centre, transplant type and donor type**

Transplant centre	Transplant type												TOTAL	
	Heart				Heart-lung				Lung					
	DBD		DCD		DBD		DCD		DBD		DCD			
Adult														
Birmingham	18	(26)	8	(9)	1	(1)	0	(0)	19	(12)	7	(4)	53	(52)
Glasgow	21	(21)	8	(11)	0	(0)	0	(0)	0	(0)	0	(0)	29	(32)
Great Ormond Street	0	(0)	1	(2)	0	(0)	0	(0)	2	(0)	0	(0)	3	(2)
Harefield	28	(34)	8	(10)	0	(1)	0	(0)	17	(20)	9	(8)	62	(73)
Manchester	17	(16)	10	(3)	0	(0)	0	(0)	18	(20)	9	(4)	54	(43)
Newcastle	18	(20)	6	(12)	1	(1)	0	(0)	11	(14)	13	(9)	49	(56)
Papworth	23	(25)	8	(13)	0	(1)	0	(0)	21	(33)	20	(7)	72	(79)
TOTAL	125	(142)	49	(60)	2	(4)	0	(0)	88	(99)	58	(32)	322	(337)
Paediatric <sup>1</sup>														
Great Ormond Street	11	(17)	4	(4)	0	(1)	0	(0)	1	(3)	1	(1)	17	(26)
Newcastle	6	(13)	4	(1)	0	(0)	0	(0)	1	(0)	0	(0)	11	(14)
Papworth	1	(0)	0	(0)	0	(0)	0	(0)	0	(0)	0	(0)	1	(0)
TOTAL	18	(30)	8	(5)	0	(1)	0	(0)	2	(3)	1	(1)	29	(40)

<sup>1</sup> Paediatric recipients are aged under 16 years at time of transplant

At 31 March 2025 there were approximately 4,300 recipients with a functioning cardiothoracic organ transplant being followed-up by the UK Transplant Registry.

The length of time that elapses between cardiothoracic organs being removed from the donor and their transplantation into the recipient is called the total preservation time. Generally, the shorter this time, the more likely the organ is to work immediately and the better the long-term outcome. Please note some of these data include the use of donor organ maintenance systems.

In 2024-2025, the median total preservation time for a DBD heart transplant was 3.6 hours (Inter-Quartile (IQ) range 3.0 – 4.1) and for a DCD heart transplant was 5.2 hours (IQ range 4.7 – 5.9) and overall was 3.9 hours (IQ range 3.3 – 4.6).

The median total preservation time for a DBD donor lung transplant was 7.5 hours (IQ range 5.9 – 9.2) and for a DCD donor lung transplant was 9.3 hours (IQ range 7.7 – 10.7) and overall was 8.1 hours (IQ range 6.8 – 9.9).

## 7.5 Demographic characteristics

The age group, sex, ethnicity and blood group of deceased donors, transplant recipients and patients on the transplant list are shown in **Table 7.12**.

<b>Table 7.12 Demographic characteristics of deceased cardiothoracic donors and transplant recipients, 1 April 2024 - 31 March 2025, and transplant list patients at 31 March</b>							
		<b>Donors</b>		<b>Transplant recipients</b>		<b>Active transplant list patients</b>	
		<b>N</b>	<b>(%)</b>	<b>N</b>	<b>(%)</b>	<b>N</b>	<b>(%)</b>
Age (years)	0-17	19	(6)	33	(9)	50	(10)
	18-34	86	(27)	46	(13)	35	(7)
	35-49	113	(36)	74	(21)	112	(22)
	50-59	76	(24)	115	(33)	148	(29)
	60-69	24	(8)	83	(24)	154	(31)
	70+	0	(0)	0	(0)	3	(1)
	Mean (SD)	41	(14)	47	(16)	48	(17)
Sex	Male	190	(60)	257	(73)	299	(60)
	Female	128	(40)	94	(27)	202	(40)
	Unknown		-		-	1	-
Ethnicity	White	280	(89)	287	(83)	392	(79)
	Asian	18	(6)	41	(12)	59	(12)
	Black	8	(3)	7	(2)	26	(5)
	Other	6	(2)	7	(2)	9	(2)
	Unknown	6	-	9	-	16	-
Blood group	O	157	(49)	137	(39)	296	(59)
	A	118	(37)	140	(40)	142	(28)
	B	32	(10)	55	(16)	58	(12)
	AB	11	(3)	19	(5)	6	(1)
Graft number	First graft		-	346	(99)	495	(99)
	Re-graft		-	5	(1)	7	(1)
<b>TOTAL</b>		<b>318</b>	<b>(100)</b>	<b>351</b>	<b>(100)</b>	<b>502</b>	<b>(100)</b>