

Kidney Activity

Key messages

- The number of patients active on the kidney transplant list as at 31 March increased to 6,939
- The number of deceased kidney donors decreased by 6% to 1,361
- Kidney transplants from living donors increased by 6% to 964, while transplants from deceased donors decreased by 5% to 2,337
- 125 kidney transplants were made possible by the paired/pooled exchanges with the UK Living Kidney Sharing Scheme (31 2-transplant cycles and 22 3-transplant cycles)
- There were 60 non-directed altruistic living kidney donors, leading to 99 patients benefitting from a living donor transplant

5.1 Overview

The number of deceased kidney donors decreased by 6% in 2024-2025 compared to 2023-2024 and the number of deceased donor kidney transplants decreased by 5%. There were 6,939 patients waiting for a kidney transplant at 31 March 2025, with the number of patients on the national list increasing as more patients are reactivated on the list following the height of the COVID-19 pandemic.

A summary of activity for deceased donor kidney transplants and the transplant list at year end for the last ten years is shown in **Figure 5.1**. The number of patients registered on the active transplant list at 31 March 2025 for a kidney only or multi-organ kidney transplant has increased by 31% since 31 March 2016. These registrations include patients suspended on the kidney waiting list but active on the liver waiting list for a combined liver and kidney transplant.

On 11 September 2019, a new National Kidney Offering Scheme was introduced to offer kidneys from both donors after brain death and donors after circulatory death. This is a change from the previous system where kidneys from donors after circulatory death were offered under a different scheme than kidneys from donors after brain death. The scheme has two tiers with priority going to patients who are the most difficult to match or who have waited over 7 years for a transplant.

Table 5.1 shows the number of deceased and living donor kidney transplants carried out in 2024-2025 at each centre. Donation figures for centres in London are not reported individually as they have shared designated areas and donor populations. Multi-organ transplants including a kidney are included in the table.

The total number of deceased kidney donors decreased to 1,361 in 2024-2025 from 1,447 in 2023-2024 and the number of transplants decreased from 2,448 to 2,337. The number of kidney donors after circulatory death decreased to 710 from 722 in 2023-2024 and the number of transplants from such donors decreased by 1% to 1,175.

Throughout this chapter, intestinal transplants involving a kidney are not included in the kidney transplant activity reported. Any kidneys retrieved and used for such transplants are however reported in the kidney donor activity. Intestinal transplant activity is reported in Chapter 9.



Figure 5.1

**Deceased donor kidney programme in the UK, 1 April 2015 - 31 March 2025,
Number of donors, transplants and patients on the active transplant list at 31 March**

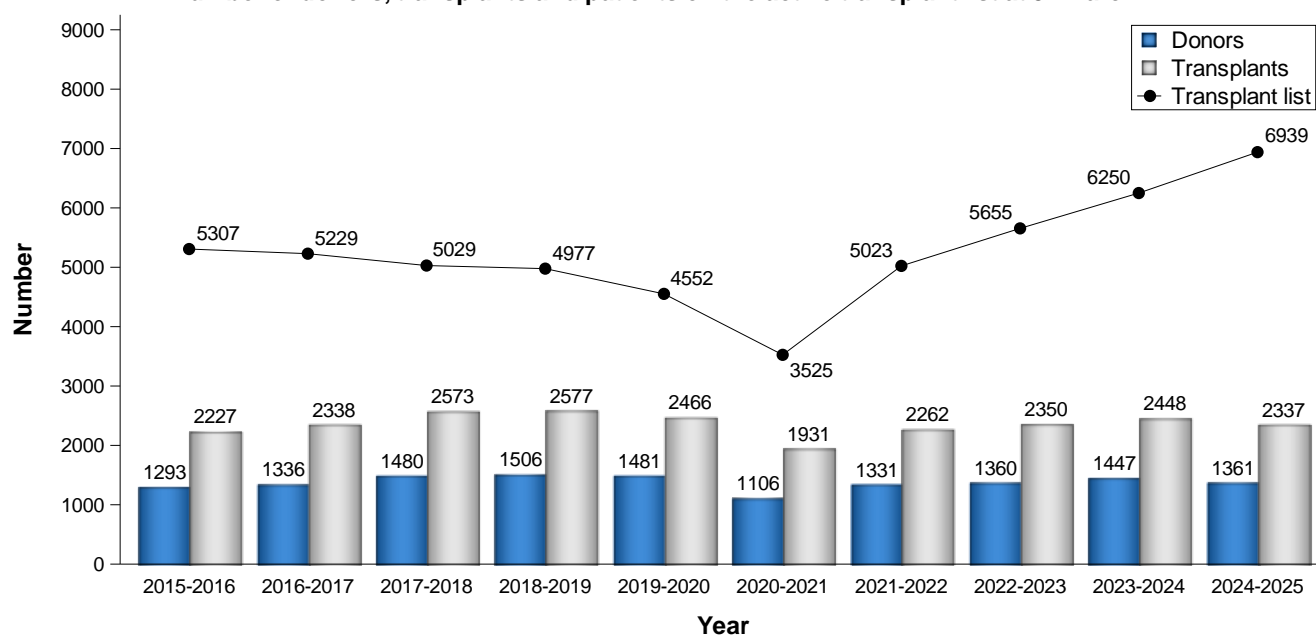


Table 5.1 Kidney donors and transplants, 1 April 2024 - 31 March 2025 (2023-2024) and transplant list at 31 March 2025 (2024) in the UK, by centre

Centre	Deceased kidney donors				Deceased donor transplants				Living donor transplants		Active transplant list	
	DBD		DCD		DBD		DCD					
Belfast	25	(33)	18	(31)	13	(15)	15	(34)	62	(56)	90	(74)
Birmingham	44	(29)	54	(51)	81	(110)	82	(72)	54	(46)	545	(450)
Bristol	31	(34)	38	(39)	39	(44)	40	(43)	47	(46)	258	(222)
Cambridge	16	(21)	52	(45)	52	(58)	111	(96)	22	(22)	260	(203)
Cardiff	29	(24)	25	(15)	36	(43)	52	(44)	48	(42)	192	(150)
Coventry ¹	18	(14)	13	(9)	21	(27)	29	(28)	18	(20)	166	(139)
Edinburgh	13	(21)	24	(20)	40	(40)	29	(34)	43	(48)	262	(231)
Glasgow	36	(48)	36	(38)	47	(53)	29	(46)	52	(46)	277	(256)
Leeds	35	(49)	43	(55)	63	(50)	69	(65)	53	(42)	432	(440)
Leicester	19	(19)	27	(15)	44	(59)	52	(38)	26	(25)	302	(292)
Liverpool	15	(26)	21	(11)	45	(47)	41	(39)	32	(27)	205	(191)
London ²	196	(189)	184	(214)	-	-	-	-	-	-	-	-
Great Ormond Street	-	-	-	-	3	(5)	2	(4)	21	(16)	23	(20)
Guy's	-	-	-	-	95	(121)	89	(99)	74	(93)	404	(389)
Royal Free	-	-	-	-	63	(36)	51	(64)	24	(22)	305	(286)
Royal London	-	-	-	-	58	(76)	67	(67)	32	(34)	384	(376)
St George's	-	-	-	-	52	(62)	58	(49)	41	(45)	272	(297)
WLRTC	-	-	-	-	69	(61)	59	(61)	37	(32)	399	(385)
Manchester	51	(62)	43	(50)	100	(108)	97	(105)	67	(64)	718	(586)
Newcastle	27	(31)	21	(25)	47	(55)	48	(31)	39	(48)	335	(290)
Nottingham	19	(20)	19	(20)	29	(36)	16	(21)	24	(15)	185	(153)
Oxford ¹	19	(27)	25	(25)	84	(79)	77	(68)	62	(57)	406	(375)
Plymouth	14	(24)	27	(19)	12	(16)	16	(16)	24	(16)	119	(108)
Portsmouth	29	(35)	29	(23)	42	(39)	23	(33)	28	(32)	248	(205)
Sheffield	15	(19)	11	(17)	27	(20)	23	(31)	21	(15)	152	(132)
TOTAL	651	(725)	710	(722)	1162	(1260)	1175	(1188)	964^{3,5}	(913^{4,6})	6939	(6250)

WLRTC - West London Renal and Transplant Centre

¹ As of 1 June 2016 Coventry and Oxford began working in partnership as a transplant network.

² Donor figures in this area cannot be linked to individual transplant centres due to shared retrieval areas.

³ Includes an additional 8 transplant performed at London, Cromwell Hospital, 4 transplant performed at London, London Bridge Hospital and 1 transplant performed at London, The London Clinic

⁴ Includes an additional 3 transplants performed at London, Cromwell Hospital and 1 transplants performed at London, London Bridge Hospital

⁵ Includes 1 domino donor

⁶ Includes 2 domino donors

5.2 Transplant list

The number of patients registered on the kidney or kidney and pancreas transplant list increased in the year: on 31 March 2025, 6,939 patients were registered as active, compared with 6,250 at the end of March 2024.

Of the 6,939 patients on the active transplant list at 31 March 2025, 344 required a kidney and pancreas/islet transplant (314 at 31 March 2024).

The outcome of patients registered on the UK kidney and kidney/pancreas transplant list at 1 April 2024, or subsequently registered during the financial year, is shown in **Table 5.2**. A total of 4,669 patients joined the kidney transplant list last year, while a further 226 joined the kidney/pancreas transplant list.

Table 5.2 Kidney transplant list and new registrations in the UK, 1 April 2024 - 31 March 2025						
Outcome of patient at 31 March 2025	Active and suspended patients at 1 April 2024		New registrations in 2024-2025¹		TOTAL	
	N	%	N	%	N	%
Kidney transplant list						
Remained active/suspended	6376	69	3633	78	10009	72
Transplanted	2099	23	978	21	3077	22
Removed ²	477	5	32	1	509	4
Died	280	3	26	1	306	2
TOTAL	9232		4669		13901	
Kidney/pancreas transplant list						
Remained active/suspended	322	65	199	88	521	72
Transplanted	103	21	17	8	120	17
Removed ³	52	11	3	1	55	8
Died	16	3	7	3	23	3
TOTAL	493		226		719	
¹ Includes re-registrations for second or subsequent patients						
² Includes 3 patients removed from kidney list and made active on kidney/pancreas list						
³ Includes 13 patients removed from kidney/pancreas list and made active on kidney/islet list						

Table 5.3 shows the active transplant list in the UK at 31 March 2025 and 2024 by country/NHS region of patient's residence. In 2025, the overall kidney transplant list rate was 102.6 pmp with rates across NHS regions ranging from 75.3 pmp to 144.3 pmp.

Table 5.3 Active kidney transplant list at 31 March, by Country/ NHS region of patient residence				
Country/ NHS region of residence	Kidney transplant list (pmp)			
	2025		2024	
North East and Yorkshire	924	(112.4)	866	(105.4)
North West	781	(103.9)	662	(88.0)
Midlands	1282	(117.0)	1097	(100.1)
East of England	482	(75.3)	439	(68.6)
London	1280	(144.3)	1236	(139.3)
South East	725	(77.3)	698	(74.4)
South West	533	(92.5)	452	(78.5)
England	6007	(105.2)	5450	(95.4)
Isle of Man	12	(150.0)	4	(50.0)
Channel Islands	10	(58.8)	8	(47.1)
Wales	264	(84.3)	216	(69.0)
Scotland	533	(97.8)	485	(89.0)
Northern Ireland	98	(51.3)	78	(40.8)
TOTAL¹	6939	(102.6)	6250	(92.5)
¹ Includes patients in 2025 (2024) residing in: Unspecified UK 10 (8); Republic of Ireland 2 (0); Overseas 3 (1)				

An indication of outcomes for adult patients listed for a kidney only transplant is summarised in **Figure 5.2**. This shows the proportion of patients transplanted or still waiting one, three and five years after joining the list. It also shows the proportion removed from the transplant list (typically because they become too unwell for transplant) and those dying while on the transplant list. Only 32% of patients are transplanted within one year, while five years after listing 73% of patients have received a transplant.

The median (average) waiting time for a kidney only transplant has increased from 489 days reported last year to 503 days for an adult patient and is shown by blood group in **Table 5.4** and patient ethnicity in **Table 5.5**. Because of the need to match donor and recipient blood groups and tissue types, waiting times to transplant differ according to patient blood groups and ethnicity due to differences between the donor pool and patients awaiting a kidney transplant. Note that these waiting times are not adjusted for other relevant factors which may be influential and which may differ across blood or ethnic groups.

Figure 5.2 Post-registration outcome for 3716 new adult kidney only registrations made in the UK, 1 April 2019 - 31 March 2020

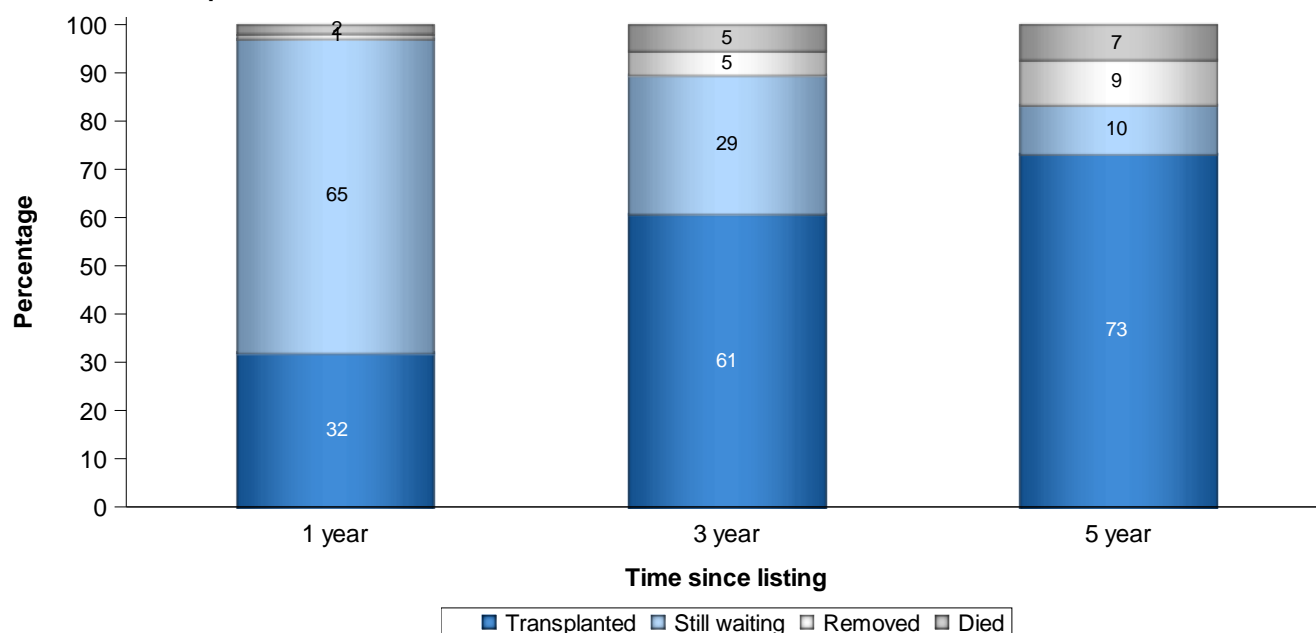


Table 5.4 Median waiting time to kidney only transplant in the UK, for patients registered 1 April 2018 - 31 March 2022

Blood group	Number of patients registered	Waiting time (days)	
		Median	95% Confidence interval
Adult			
O	5062	741	714 - 768
A	4002	269	256 - 282
B	1678	882	818 - 946
AB	498	149	123 - 175
TOTAL	11240	503	487 - 519
Paediatric			
O	142	526	390 - 662
A	87	229	153 - 305
B	50	670	541 - 799
AB	15	127	60 - 194
TOTAL	294	387	293 - 481

Table 5.5 Median waiting time to kidney only transplant in the UK, for patients registered 1 April 2018 - 31 March 2022

Ethnicity	Number of patients registered	Waiting time (days)	
		Median	95% Confidence interval
Adult			
White	7340	463	444 - 482
Asian	2073	592	551 - 633
Black	1227	560	512 - 608
Other	396	530	441 - 619
TOTAL¹	11240	503	487 - 519
Paediatric			
White	158	292	215 - 369
Asian	80	676	583 - 769
Black	30	360	257 - 463
Other	17	729	594 - 864
TOTAL²	294	387	293 - 481

¹ Includes 204 patients whose ethnicity was not reported

² Includes 9 patients whose ethnicity was not reported

5.3 Donor and organ supply

Of the 676 organ donors after brain death in the UK in 2024-2025, 651 (96%) were kidney donors. From these donors, 1,290 kidneys were retrieved. There were 710 kidney donors after circulatory death in 2024-2025. From these donors, 1,403 kidneys were retrieved. **Table 5.6** shows this activity by donor country/NHS region of donor's residence. No adjustments have been made for potential demographic differences in populations.

The overall rate for kidney donors after brain death is 9.6 pmp, with rates across NHS regions ranging from 7.3 to 10.6 pmp. The number of kidneys retrieved from donors after brain death in the UK is 19.1 pmp and varies from 14.4 to 20.8 pmp.

The overall rate for kidney donors after circulatory death is 10.5 pmp, with rates across NHS regions ranging from 5.7 to 16.6 pmp. The number of kidneys retrieved from donors after circulatory death is 20.8 pmp and varies from 11.4 to 32.7 pmp.

Table 5.6 Kidney donation and retrieval rates for deceased donors in the UK, 1 April 2024 - 31 March 2025, by Country/ NHS region								
Country/ NHS region of residence	Kidney donors (pmp)				Kidneys retrieved (pmp)			
	DBD		DCD		DBD		DCD	
North East and Yorkshire	77	(9.4)	77	(9.4)	152	(18.5)	153	(18.6)
North West	55	(7.3)	48	(6.4)	108	(14.4)	96	(12.8)
Midlands	95	(8.7)	110	(10.0)	189	(17.2)	213	(19.4)
East of England	55	(8.6)	106	(16.6)	110	(17.2)	209	(32.7)
London	69	(7.8)	51	(5.7)	137	(15.4)	101	(11.4)
South East	97	(10.3)	98	(10.4)	193	(20.6)	194	(20.7)
South West	61	(10.6)	86	(14.9)	120	(20.8)	170	(29.5)
England	509	(8.9)	576	(10.1)	1009	(17.7)	1136	(19.9)
Isle of Man	3	(37.5)	1	(12.5)	6	(75.0)	2	(25.0)
Channel Islands	1	(5.9)	0	(0.0)	2	(11.8)	0	(0.0)
Wales	39	(12.5)	28	(8.9)	77	(24.6)	55	(17.6)
Scotland	45	(8.3)	54	(9.9)	89	(16.3)	108	(19.8)
Northern Ireland	22	(11.5)	17	(8.9)	44	(23.0)	34	(17.8)
TOTAL¹	651	(9.6)	710	(10.5)	1290	(19.1)	1403	(20.8)
¹ Includes 66 donors with unknown UK postcode (32 DBD and 34 DCD)								

5.4 Transplants

The number of kidney only transplants by recipient country/NHS region of residence is shown in **Table 5.7**. No adjustments have been made for potential demographic differences in populations. The deceased donor transplant rate ranged from 25.3 to 50.8 pmp across NHS regions and overall was 32.7 pmp. The living donor transplant rate ranged from 9.5 to 17.2 pmp across NHS regions and overall was 13.9 pmp.

Table 5.7 Kidney only transplant rates per million population (pmp), in the UK, 1 April 2024 - 31 March 2025, by country and NHS region								
Country/ NHS region of residence	DBD		DCD		TOTAL		Living	
	N	(pmp)	N	(pmp)	N	(pmp)	N	(pmp)
North East and Yorkshire	128	(15.6)	138	(16.8)	266	(32.4)	115	(14.0)
North West	115	(15.3)	117	(15.6)	232	(30.9)	88	(11.7)
Midlands	179	(16.3)	180	(16.4)	359	(32.8)	123	(11.2)
East of England	78	(12.2)	136	(21.3)	214	(33.4)	61	(9.5)
London	233	(26.3)	218	(24.6)	451	(50.8)	111	(12.5)
South East	133	(14.2)	135	(14.4)	268	(28.6)	132	(14.1)
South West	70	(12.2)	76	(13.2)	146	(25.3)	99	(17.2)
England	936	(16.4)	1000	(17.5)	1936	(33.9)	729	(12.8)
Isle of Man	0		0		0		0	
Channel Islands	3	(17.6)	2	(11.8)	5	(29.4)	0	(0.0)
Wales	42	(13.4)	61	(19.5)	103	(32.9)	62	(19.8)
Scotland	78	(14.3)	56	(10.3)	134	(24.6)	95	(17.4)
Northern Ireland	13	(6.8)	15	(7.9)	28	(14.7)	52	(27.2)
TOTAL^{1,2}	1074	(15.9)	1134	(16.8)	2208	(32.7)	939	(13.9)

¹ Excludes 25 recipients of a living donor kidney who reside outside of the UK
² Includes 3 recipients with an unknown UK postcode (2 DBD and 1 living)

The number of kidney only transplants at each transplant centre is shown in **Table 5.8** for adult patients only. Kidney transplants from donors after brain death include 2 en bloc kidneys and 15 double kidney transplants in 2024-2025 (1 and 16 in 2023-2024, respectively). Kidney transplants from donors after circulatory death include 3 en bloc and 12 double kidney transplants in 2024-2025 (2 and 19 in 2023-2024, respectively). This table excludes multi-organ transplants: 7 (10) kidney and liver, 113 (127) kidney and pancreas, and 9 (10) kidney and islets in 2024-2025 (2023-2024).

**Table 5.8 Adult kidney only transplants in the UK,
1 April 2023 - 31 March 2025, by transplant centre**

Transplant centre	2023-2024				2024-2025			
	DBD	DCD	Living donor	TOTAL	DBD	DCD	Living donor	TOTAL
Belfast	14	34	53	101	13	15	61	89
Birmingham	101	71	40	212	75	79	49	203
Bristol	40	43	40	123	37	39	36	112
Cambridge	52	82	21	155	41	99	21	161
Cardiff	35	40	42	117	33	47	47	127
Coventry ¹	27	28	20	75	21	29	18	68
Edinburgh	32	30	48	110	30	25	43	98
Glasgow	53	45	43	141	45	28	47	120
Guy's	106	91	82	279	83	84	63	230
Leeds	49	65	35	149	62	68	51	181
Leicester	59	38	24	121	44	52	25	121
Liverpool	47	39	27	113	45	41	32	118
Manchester	85	91	53	229	74	90	58	222
Newcastle	49	28	44	121	43	47	37	127
Nottingham	33	21	11	65	27	15	17	59
Oxford ¹	56	50	55	161	59	66	62	187
Plymouth	16	16	16	48	12	16	24	52
Portsmouth	39	33	32	104	42	23	28	93
Sheffield	20	31	15	66	27	23	21	71
St George's	62	49	45	156	52	58	41	151
The Royal Free	34	64	22	120	63	51	24	138
The Royal London	76	67	33	176	58	67	32	157
WLRTC	57	59	32	148	64	58	37	159
TOTAL	1142	1115	837²	3094²	1050	1120	887³	3057³

WLRTC - West London Renal and Transplant Centre

¹ As of 1 June 2016 Coventry and Oxford began working in partnership as a transplant network.

² Includes 3 transplants performed at London Cromwell Hospital and 1 transplant performed at London Bridge Hospital

³ Includes 8 transplants performed at London Cromwell Hospital, 4 transplants performed at London Bridge Hospital and 1 transplant performed at The London Clinic

Living donor kidney only transplants increased by 6% to 964 in 2024-2025, representing 29% of the total kidney transplant programme. The total number of living donor adult transplants performed by each transplant centre is shown in **Table 5.9**. Also shown is the number as a percentage of patients listed at the end of the year, to indicate the size of the living donor programme relative to the centre's transplant list.

Most living donor transplants are 'directed'. This means that a kidney is donated to a specific recipient known to the donor - a close family member or friend. There has been a 4% increase in these transplants. In addition, there are a number of transplants from non-directed altruistic donors. Last year 60 such donors donated a kidney to a recipient, 55 of which were transplanted into an adult recipient. Of the 60 non-directed altruistic donors, 24 donated into a non-directed altruistic donor chain (9 2-transplant chains and 15 3-transplant chains), benefiting 39 patients in the UK Living Kidney Sharing Scheme. The kidneys from the paired donors of these recipients led to 24 adult patients on the deceased donor transplant list receiving a transplant. Thus 60 non-directed altruistic donors created chains benefiting 99 patients in total (94 adult and 5 paediatric patients).

When a potential living donor and recipient are biologically incompatible (blood group or tissue type), they may consider joining a list of others in the same situation with the hope that an exchange of kidneys between them can lead to a compatible living donor transplant. The scheme also includes compatible pairs that would like a better match. This type of exchange is known as paired donation and most exchanges are between two pairs (i.e. two donors and their respective incompatible recipients), or between three pairs. In 2024-2025, there were 125 paired living kidney donor transplants (123 adult and 2 paediatric recipients).

As a percentage of the number of patients on the active transplant list at 31 March 2025, the number of living donor adult transplants in the year was 13% nationally and ranged from 8% to 69% at individual transplant centres.

Table 5.9 Adult living donor kidney transplants in the UK, 1 April 2024 - 31 March 2025, and percentage of active transplant list at 31 March, by transplant centre

Transplant centre	Directed	Non-directed (altruistic) to waiting list	Paired/ pooled exchanges	Non- directed altruistic donor chain	TOTAL	
					N	% list
Belfast	43	0	14	4	61	69
Birmingham	36	1	7	5	49	9
Bristol	31	1	3	1	36	14
Cambridge	16	0	3	2	21	8
Cardiff	39	0	6	2	47	24
Coventry ¹	11	3	2	2	18	11
Edinburgh	38	0	5	0	43	16
Glasgow	39	1	4	3	47	17
Guy's	48	4	6	5	63	16
Leeds	34	1	12	4	51	12
Leicester	21	1	0	3	25	8
Liverpool	20	1	8	3	32	16
Manchester	46	5	5	2	58	8
Newcastle	23	3	9	2	37	11
Nottingham	15	0	0	2	17	10
Oxford ¹	40	5	9	8	62	15
Plymouth	16	3	4	1	24	20
Portsmouth	16	0	7	5	28	11
Sheffield	16	0	3	2	21	14
St George's	24	2	11	4	41	15
The Royal Free	21	3	0	0	24	8
The Royal London	24	3	3	2	32	8
WLRTC	34	0	2	1	37	9
TOTAL²	664	37³	123	63	887	13

¹ As of 1 June 2016 Coventry and Oxford began working in partnership as a transplant network.

² Includes 1 directed transplant performed at The London Clinic, 8 at London Cromwell and 4 at London Bridge

³ Includes 1 domino donor transplants

Non-directed altruistic donor kidneys are matched to a suitable recipient on a national basis and thus are rarely used in the transplant centre responsible for the 'work-up' of the donor. The number of non-directed donors according to donor hospital (rather than transplant hospital) and whether the altruistic donor donated as part of a chain within the UK Living Kidney Sharing Scheme or directly to the deceased donor list is shown in **Table 5.10**.

Table 5.10 Non-directed altruistic kidney donors in the UK, 1 April 2023 - 31 March 2025, by donor centre								
Donor centre	Transplant list	2023-2024 Donation to			Transplant list	2024-2025 Donation to		
		Chain	Total	%		Chain	Total	%
Belfast	7	10	17	35	4	1	5	8
Birmingham	1	3	4	8	1	4	5	8
Bristol	0	1	1	2	4	0	4	7
Cambridge	1	0	1	2	2	1	3	5
Cardiff	0	0	0	0	2	0	2	3
Coventry ¹	1	0	1	2	0	0	0	0
Edinburgh	1	1	2	4	2	0	2	3
Glasgow	0	1	1	2	2	2	4	7
Guy's	0	3	3	6	1	3	4	7
Leeds	0	1	1	2	0	2	2	3
Leicester	0	0	0	0	1	0	1	2
Liverpool	1	2	3	6	1	0	1	2
Manchester	0	2	2	4	5	1	6	10
Newcastle	0	0	0	0	2	2	4	7
Nottingham	1	1	2	4	2	0	2	3
Oxford ¹	2	2	4	8	1	1	2	3
Plymouth	0	0	0	0	2	2	4	7
Portsmouth	0	1	1	2	2	1	3	5
Sheffield	0	0	0	0	1	1	2	3
St George's	0	1	1	2	0	0	0	0
The Royal Free	0	0	0	0	0	1	1	2
The Royal London	1	3	4	8	0	2	2	3
WLRTC	0	0	0	0	1	0	1	2
Total donors	16	32	48	100	36	24	60	100
WLRTC - West London Renal and Transplant Centre								
¹ As of 1 June 2016 Coventry and Oxford began working in partnership as a transplant network.								

The number of deceased donor and living donor transplants in paediatric patients (<18 years) performed by each paediatric transplant centre is shown in **Table 5.11**. There were 77 living donor transplants and 38 deceased donor transplants in paediatric patients in 2024-2025. The paediatric transplant list has increased by 22% from 124 patients at 31 March 2024 to 151 at the end of March 2025.

Table 5.11 Paediatric kidney only transplants in the UK, 1 April 2023 - 31 March 2025, by transplant centre								
Transplant centre	2023-2024				2024-2025			
	DBD	DCD	Living donor	TOTAL	DBD	DCD	Living donor	TOTAL
Belfast	1	0	3	4	0	0	1	1
Birmingham	9	1	6	16	5	3	5	13
Bristol	4	0	6	10	2	1	11	14
Glasgow	0	1	3	4	2	1	5	8
Great Ormond Street	5	4	16	25	3	2	21	26
Guy's	6	2	11	19	1	1	11	13
Leeds	1	0	7	8	1	1	2	4
Manchester	4	1	11	16	7	3	9	19
Newcastle	0	1	4	5	0	0	2	2
Nottingham	3	0	4	7	2	1	7	10
Adult centres	0	0	5	5	1	1	3	5
TOTAL	33	10	76¹	119	24	14	77²	115
¹ Includes 2 paired living donor transplants and 2 altruistic donor chain								
² Includes 2 paired living donor transplants and 5 altruistic donor chain								

At 31 March 2025, there were approximately 46,000 recipients with a functioning kidney transplant (including multi-organ transplants) being followed-up as reported to the UK Transplant Registry.

Rates of pre-emptive kidney only transplantation are shown in **Table 5.12**. Of the 3,172 kidney only transplant recipients in 2024-2025, dialysis status at time of transplant was reported for 2,872 (91%). Of these 2,872 transplants, 592 (21%) were carried out in pre-dialysis patients.

Pre-emptive transplants accounted for 33% of all paediatric kidney only transplants with reported dialysis status, compared with 20% of those in adults. Living donor transplants are more likely to be carried out before the need for dialysis than deceased donor transplants: 38% and 13% respectively. This is because a living donor transplant can often be carried out more quickly than a deceased donor kidney transplant as the latter often necessitates a long waiting time.

Table 5.12 Pre-emptive kidney only transplants in the UK, 1 April 2024 - 31 March 2025			
	Number of kidney only transplants	Number of transplants with known dialysis status at transplant (% of all)	Percentage of patients transplanted prior to the need for dialysis (of those with known status)
Adult			
Deceased donor transplant	2170	2000 (92.2)	(13.4)
Living donor transplant	887	778 (87.7)	(37.7)
Paediatric			
Deceased donor transplant	38	29 (76.3)	(13.8)
Living donor transplant	77	65 (84.4)	(41.5)

The length of time that elapses between a kidney being removed from the donor to its transplantation into the recipient is called total preservation time. Generally, the shorter this time, the more likely the kidney is to work immediately and the better the long-term outcome. The factors which determine this time include a) transportation of the kidney from the retrieval hospital to the hospital where the transplant is performed, b) the need to tissue type the donor and cross-match the donor and potential recipients, c) the occasional necessity of moving the kidney to another hospital if a transplant cannot go ahead, d) contacting and preparing the recipient for the transplant and e) access to the operating theatre. Median total preservation times are shown in addition to inter-quartile ranges in **Table 5.13**.

Table 5.13 Median total preservation time for kidney only transplants in the UK, 1 April 2024 - 31 March 2025				
	Number of kidney only transplants ¹	Median (hours)	Inter-quartile range ²	
			Q1	Q3
Adult				
DBD donor transplant	1050	12.5	10.0	16.9
DCD donor transplant	1120	12.9	10.1	17.1
Total	2170	12.7	10.1	17.0
Paediatric				
DBD donor transplant	24	10.1	8.8	11.6
DCD donor transplant	14	12.4	10.4	14.0
Total	38	10.6	9.3	13.6
TOTAL	2208	12.7	10.1	17.0

¹ Not all total preservation times are reported

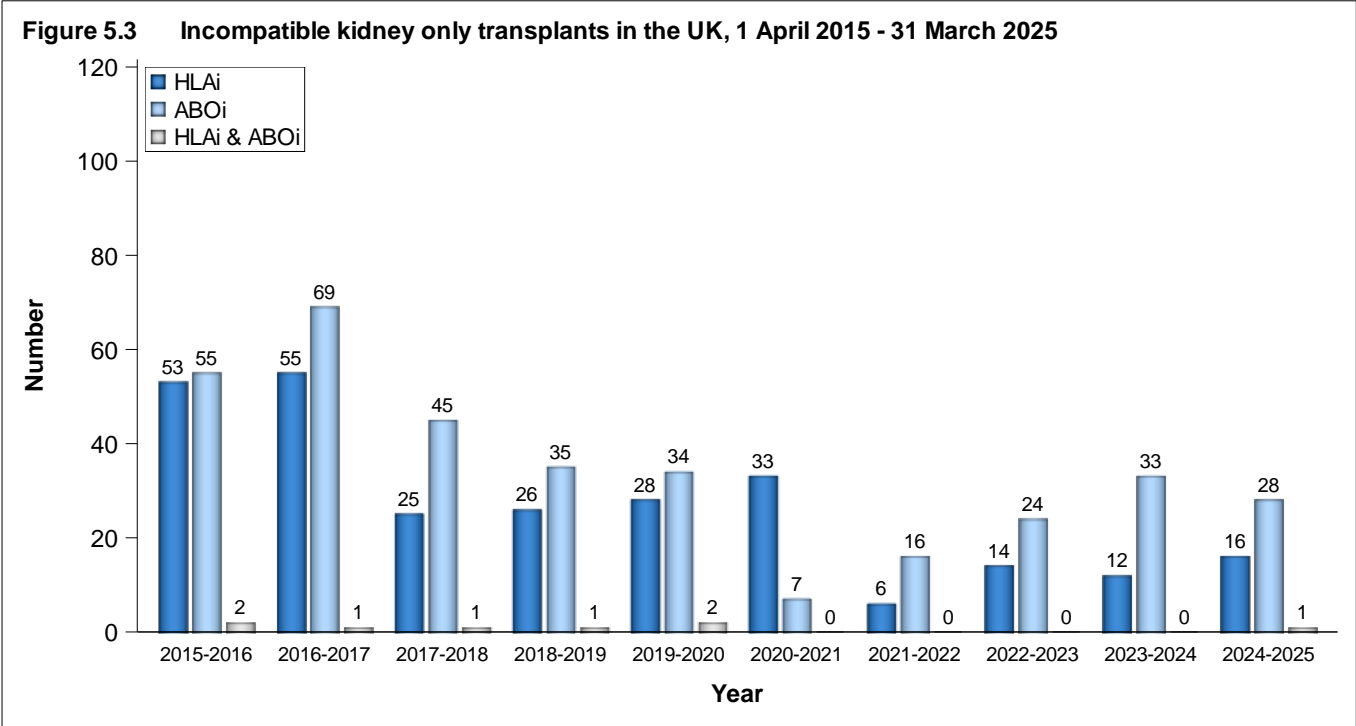
² 25% of times are shorter than Q1, 25% are longer than Q3

Kidneys from donors after brain death and donors after circulatory death are allocated on the basis of a national Kidney Offering Scheme which incorporates HLA matching between donor and recipient. These HLA matches are based on four levels which are described in **Table 5.14**. Prior to 11 September 2019 patients with 000 HLA-A, B, DR mismatch (Level 1) were prioritised in the scheme, whereas kidneys were rarely transplanted as a Level 4 mismatch. Under the current scheme, Level 4 mismatches are only permitted for difficult to match patients. More information about the allocation scheme can be found at www.odt.nhs.uk. **Table 5.15** gives the HLA mismatch group for adult and paediatric patients for DBD donor transplants but also for DCD and living donor transplants. For living donor transplantation, many transplants have a poorer HLA match between donor and recipient than deceased donor transplantation. Very often there is no genetic relationship between donor and recipient.

Table 5.14 HLA mismatch groups		
Level	HLA mismatch summary	HLA mismatch combinations included
1	000	000
2	[0 DR and 0/1 B]	100, 010, 110, 200, 210, 001, 101, 201
3	[0 DR and 2 B] or [1 DR and 0/1 B]	020, 120, 220, 011, 111, 211
4	[1 DR and 2 B] or [2 DR]	021, 121, 221, 002, 102, 202, 012, 112, 212, 022, 122, 222

Table 5.15 HLA matching for kidney only transplants in the UK, 1 April 2024 - 31 March 2025						
	DBD		DCD		Living	
	N	%	N	%	N	%
Adult						
Level 1 (Best match)	25	(2)	28	(3)	48	(8)
Level 2	180	(17)	162	(14)	73	(12)
Level 3	414	(39)	453	(40)	269	(44)
Level 4	431	(41)	477	(43)	221	(36)
Not reported	0	-	0	-	276	-
Paediatric						
Level 1 (Best match)	1	(4)	0	(0)	4	(8)
Level 2	17	(71)	6	(43)	11	(21)
Level 3	5	(21)	7	(50)	35	(66)
Level 4	1	(4)	1	(7)	3	(6)
Not reported	0	-	0	-	24	-

Often potential living donors and their recipients are HLA or blood group incompatible. Increasingly it is possible to proceed with transplantation across the incompatibilities with appropriate management. The number of HLA and ABO blood group incompatible transplants over the last ten years is shown in **Figure 5.3**. Of the 268 HLA incompatible (HLAi) transplants performed; 127 were deceased donor transplants and 141 were living donor transplants, whilst the vast majority of ABO incompatible (ABOi) transplants were living donor transplants (343 of 346). Due to the nature of reporting HLA incompatible transplants, the numbers presented may be subject to change over time.



5.5 Demographic characteristics

The age group, sex, ethnicity and blood group of deceased donors, transplant recipients and patients on the transplant list are shown in **Table 5.16** and for living donors and transplants in **Table 5.17**. Note that all percentages quoted are based only on data where relevant information was available.

Table 5.16 Demographic characteristics of deceased kidney donors and transplant recipients, 1 April 2024 - 31 March 2025, and transplant list patients at 31 March							
		Donors		Transplant recipients		Active transplant list patients	
		N	(%)	N	(%)	N	(%)
Age (years)	0-17	32	(2)	38	(2)	151	(2)
	18-34	161	(12)	270	(12)	790	(11)
	35-49	315	(23)	591	(25)	1952	(28)
	50-59	345	(25)	633	(27)	1986	(29)
	60-69	320	(24)	582	(25)	1567	(23)
	70+	188	(14)	223	(10)	493	(7)
	Mean (SD)	53	(16)	52	(14)	51	(14)
Sex	Male	771	(57)	1425	(61)	4273	(62)
	Female	590	(43)	912	(39)	2641	(38)
	Unknown	-	-	0	-	25	-
Ethnicity	White	1217	(93)	1408	(63)	4198	(64)
	Asian	49	(4)	470	(21)	1333	(20)
	Black	24	(2)	297	(13)	804	(12)
	Other	13	(1)	70	(3)	193	(3)
	Unknown	58	-	92	-	411	-
Blood group	O	622	(46)	901	(39)	3736	(54)
	A	556	(41)	941	(40)	1794	(26)
	B	128	(9)	337	(14)	1290	(19)
	AB	50	(4)	158	(7)	119	(2)
	Unknown	5	-	-	-	-	-
Graft number	First graft	-	-	1927	(82)	5827	(84)
	Re-graft	-	-	410	(18)	1112	(16)
TOTAL		1361	(100)	2337	(100)	6939	(100)

Table 5.17 Demographic characteristics of living kidney donors and transplant recipients, 1 April 2024 - 31 March 2025

		Donors		Transplant recipients	
		N	(%)	N	(%)
Age (years)	0-17	0	(0)	77	(8)
	18-34	155	(16)	225	(23)
	35-49	353	(37)	244	(25)
	50-59	256	(27)	204	(21)
	60-69	166	(17)	164	(17)
	70+	34	(4)	50	(5)
	Mean (SD)	48	(12)	44	(18)
Sex	Male	459	(48)	570	(59)
	Female	505	(52)	388	(40)
	Unknown	-	-	6	-
Ethnicity	White	835	(87)	730	(82)
	Asian	74	(8)	81	(9)
	Black	25	(3)	44	(5)
	Other	30	(3)	33	(4)
	Unknown	0	-	76	-
Blood group	O	580	(60)	413	(43)
	A	265	(27)	370	(38)
	B	105	(11)	143	(15)
	AB	14	(1)	38	(4)
	Unknown	0	-	-	-
Graft number	First graft	-	-	850	(88)
	Re-graft	-	-	114	(12)
TOTAL		964	(100)	964	(100)