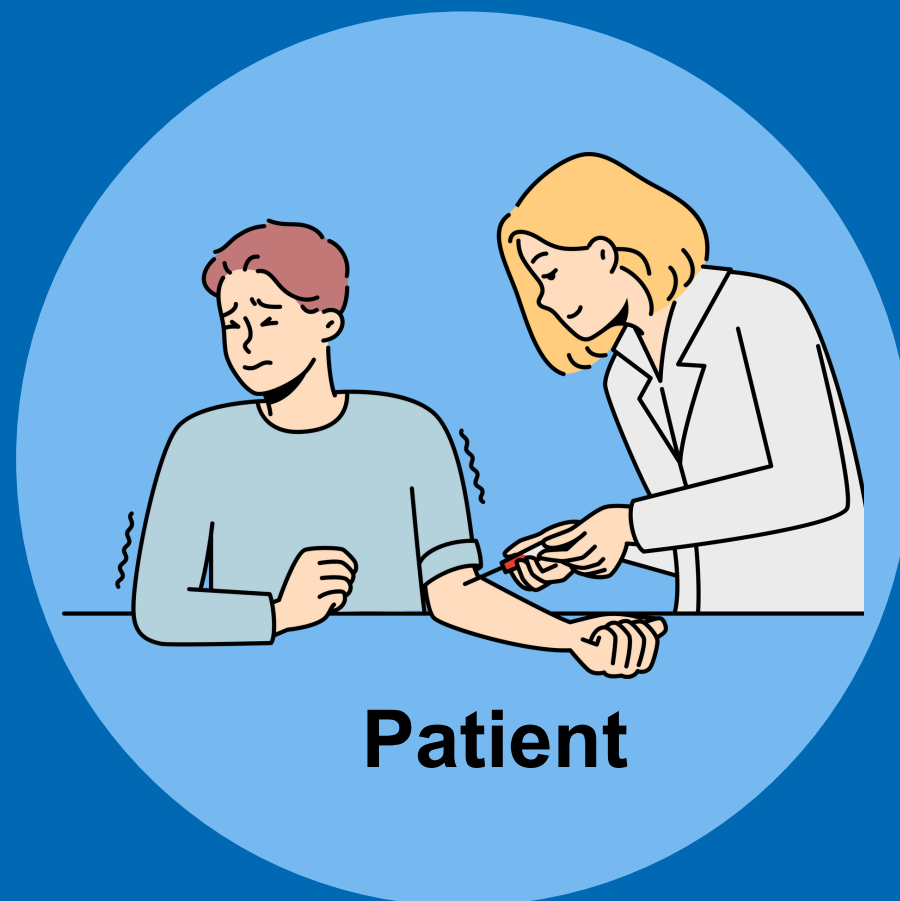


# Unnecessary and rejected blood samples

Blood and Transplant



Potential risks:

- increase in underlying anaemia
- unnecessary rebleeding
- infection
- delay in treatment



Patient dissatisfaction from being rebled and reattendance



Increase in patient safety risks



Patient dissatisfaction



Increased costs - consumables, delays, staffing and workload