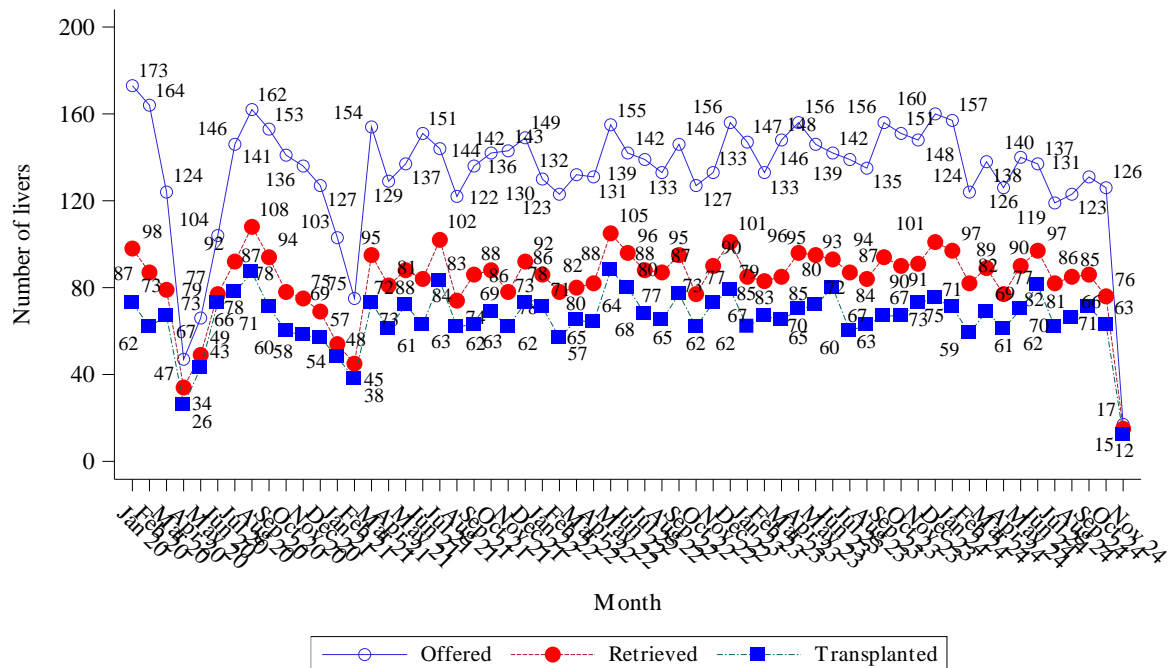


# NHS BLOOD & TRANSPLANT

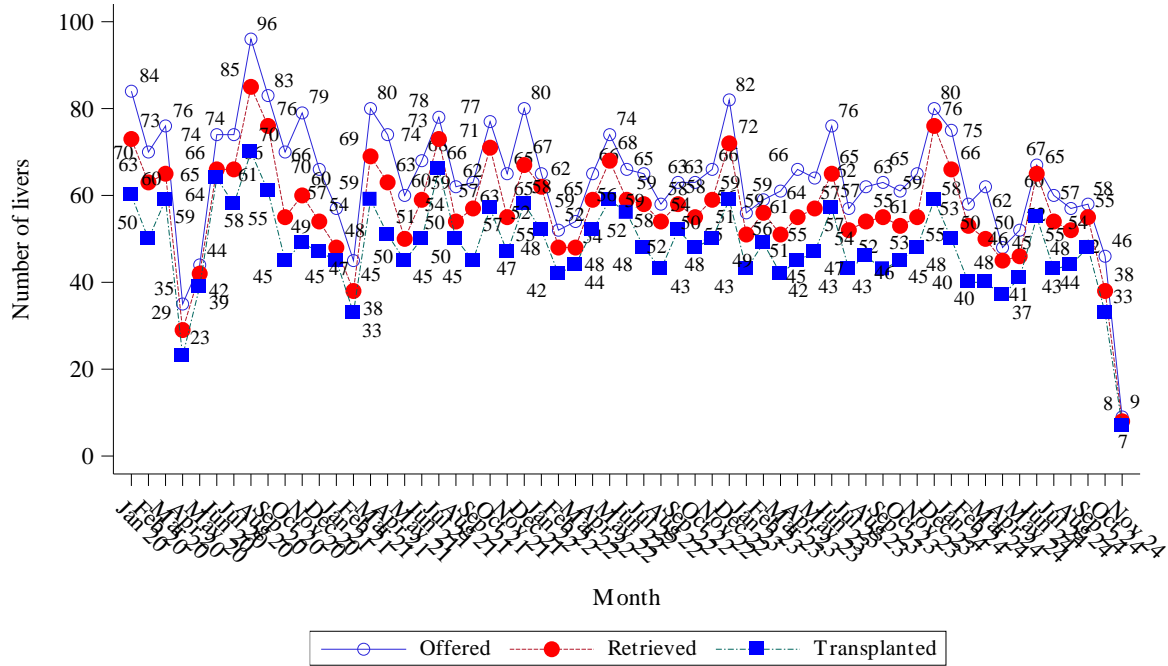
## Liver Monthly Utilisation Report, 1 January 2020 to 4 November 2024

This report examines the offering outcome of livers offered for transplantation from UK deceased donors between 1 January 2020 and 4 November 2024 as recorded on the UK Transplant Registry on 10 November 2024.

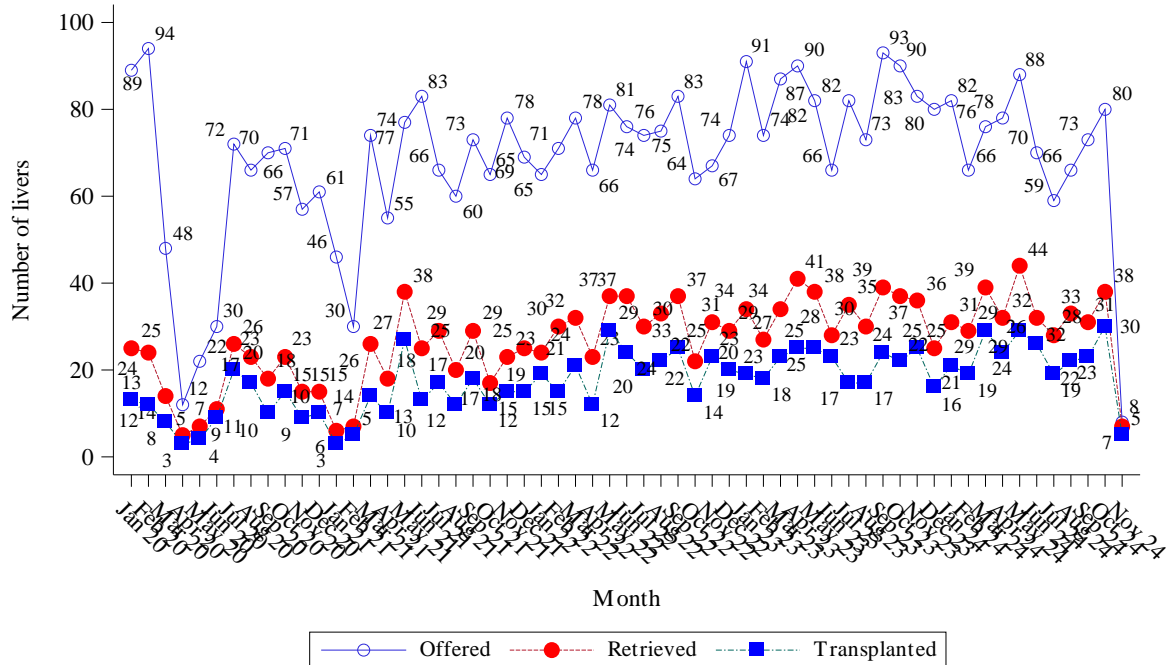
**Figure 1** Number of livers from UK deceased donors offered, retrieved and transplanted, 1 January 2020 to 4 November 2024



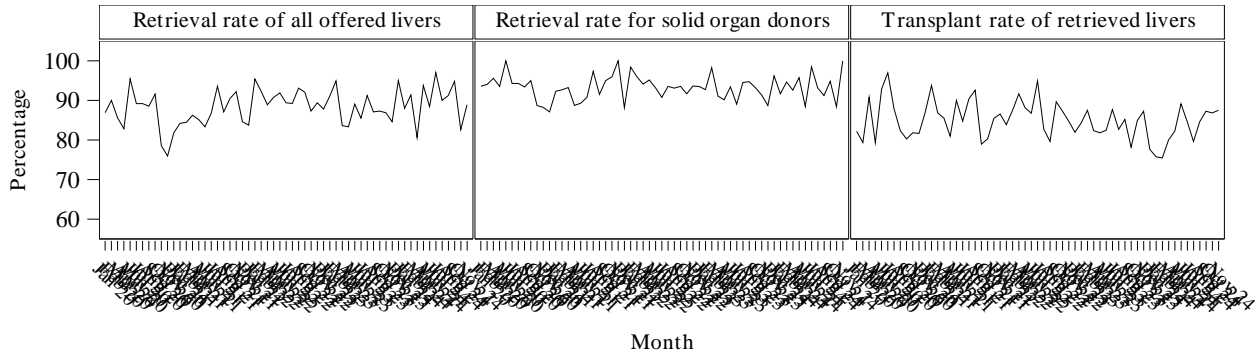
**Figure 2A** Number of livers from UK DBD donors offered, retrieved and transplanted, 1 January 2020 to 4 November 2024



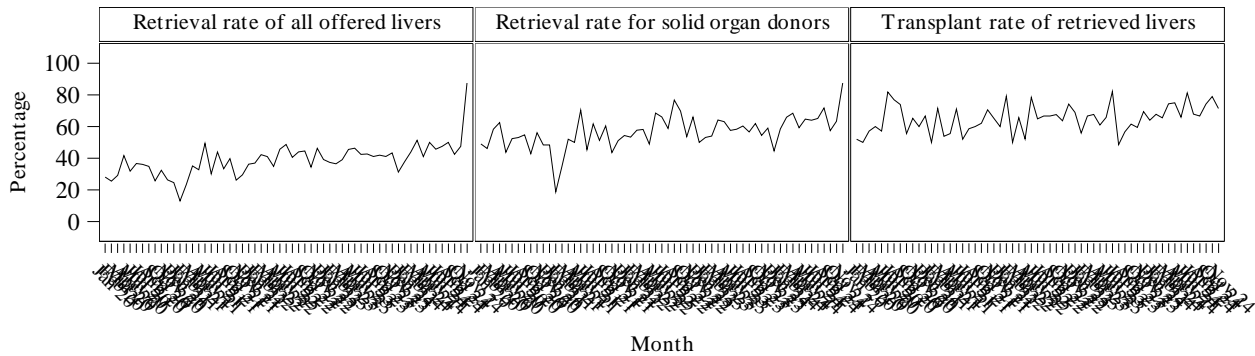
**Figure 2B** Number of livers from UK DCD donors offered, retrieved and transplanted, 1 January 2020 to 4 November 2024



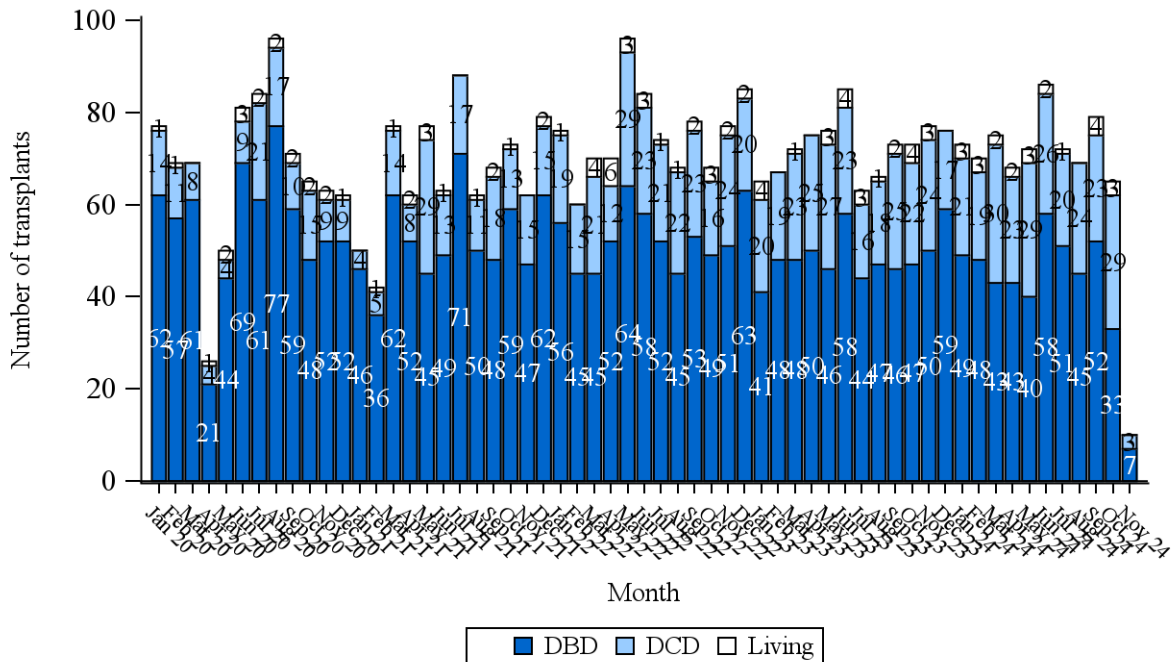
**Figure 2C Rate of retrieval and transplant from DBD liver donors in the UK, 1 January 2020 to 4 November 2024**



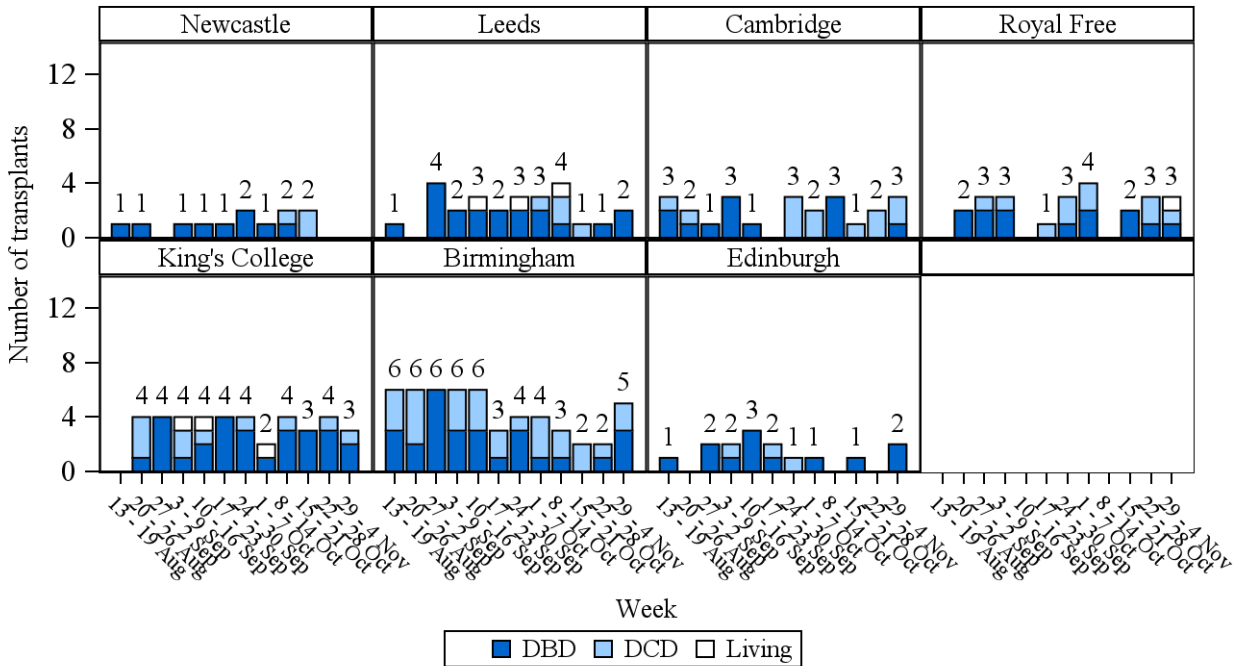
**Figure 2D Rate of retrieval and transplant from DCD liver donors in the UK, 1 January 2020 to 4 November 2024**



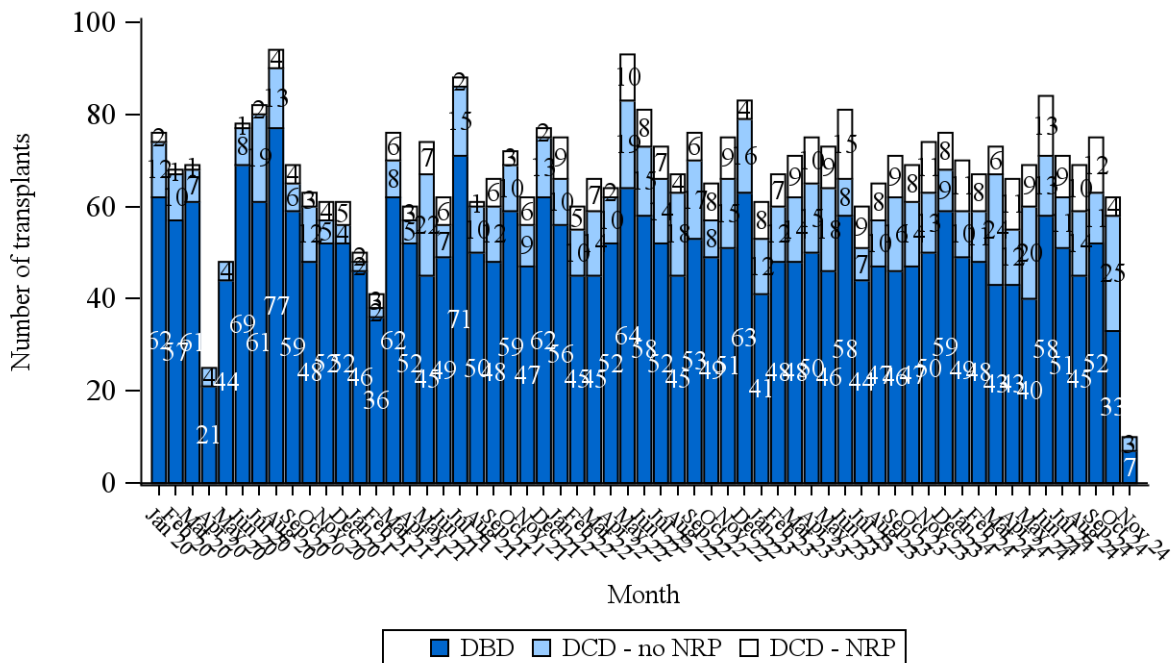
**Figure 3 Number of liver transplants performed in the UK, by donor type, 1 January 2020 to 4 November 2024**



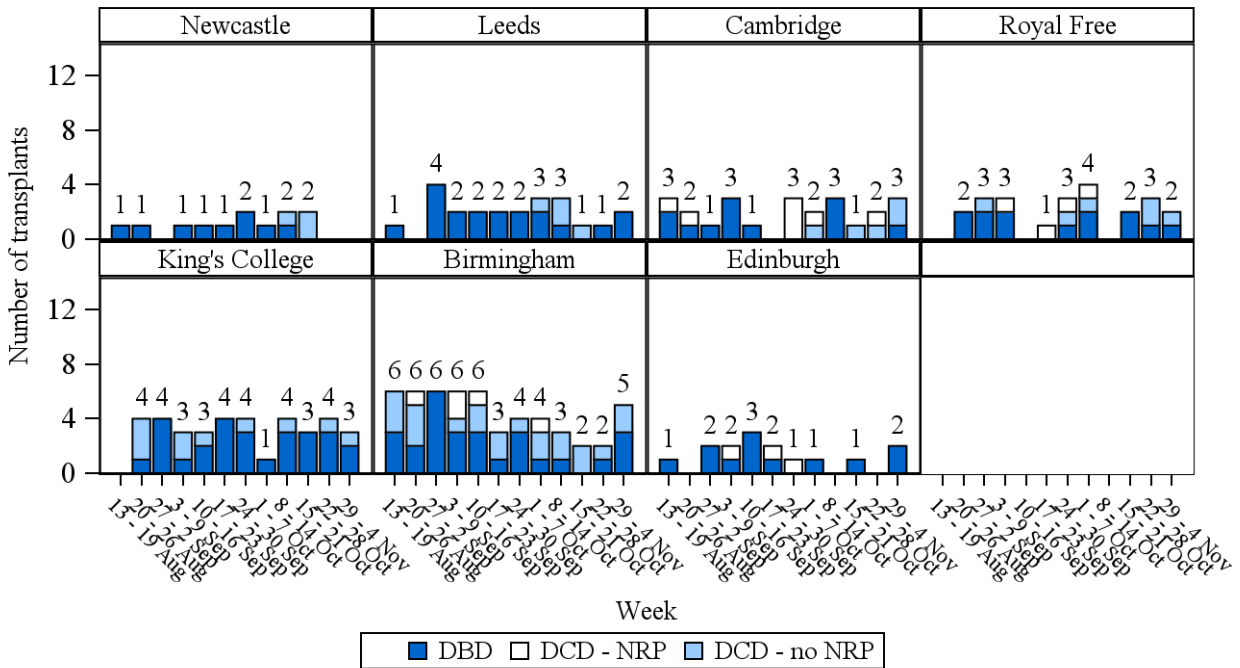
**Figure 4A** Number of liver transplants performed in the UK, by transplant centre and donor type, 13 August 2024 to 4 November 2024



**Figure 5** Number of deceased donor liver transplants performed in the UK, by NRP, 1 January 2020 to 4 November 2024

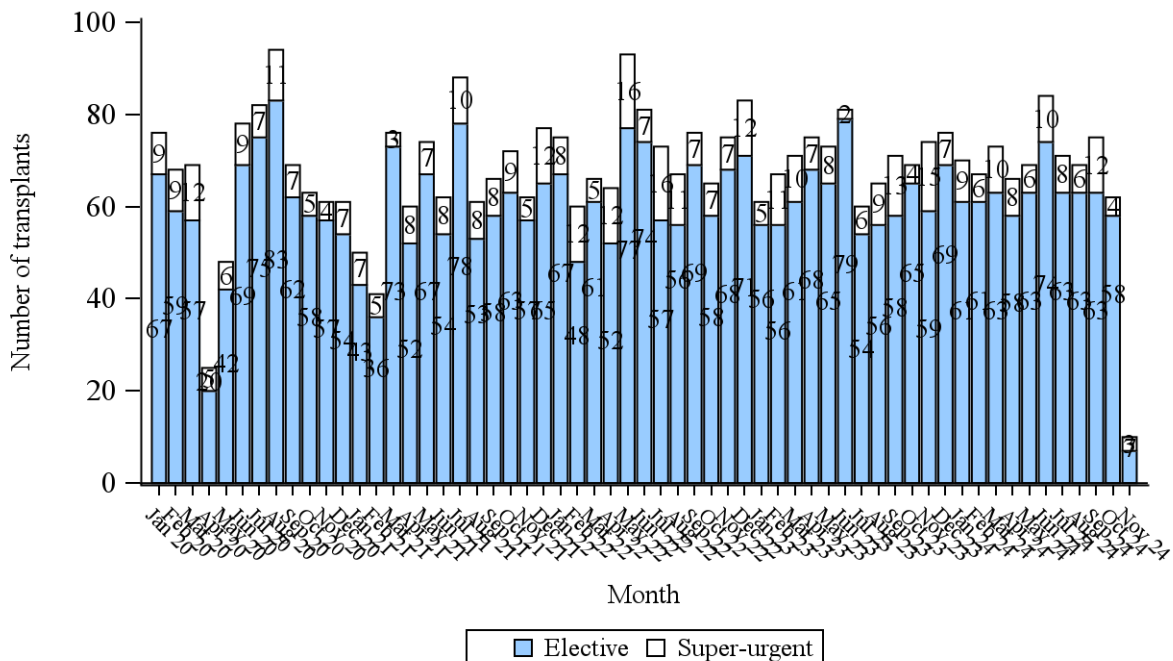


**Figure 6A** Number of deceased donor liver transplants performed in the UK, by transplant centre and NRP, 13 August 2024 to 4 November 2024

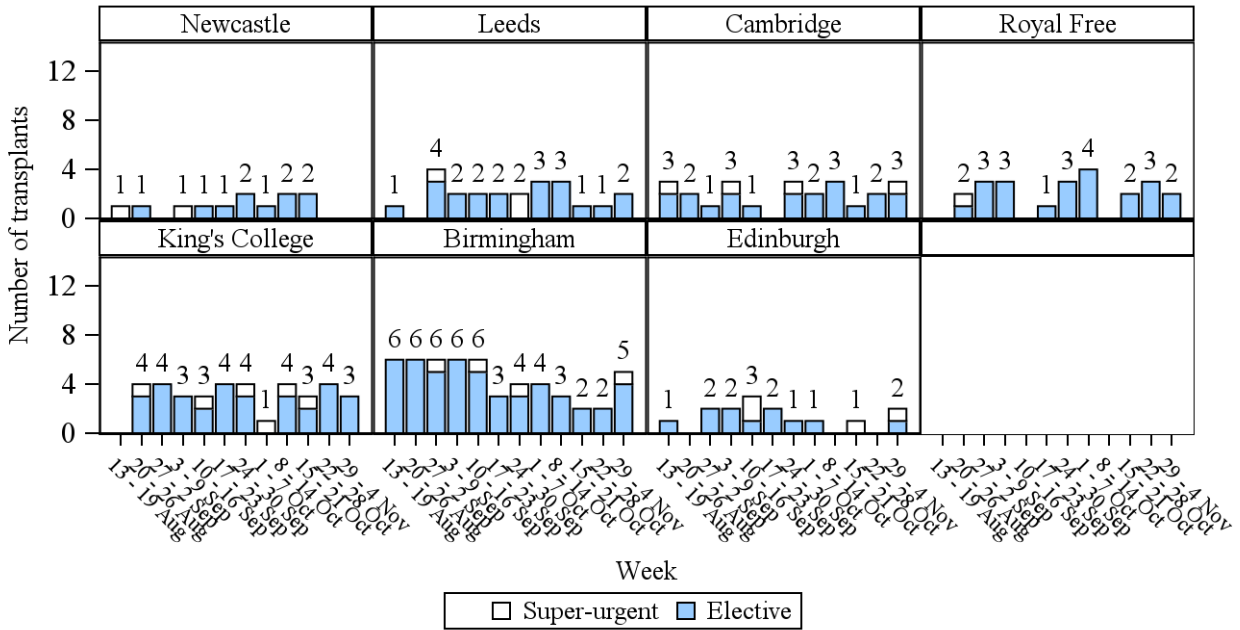


Note that NRP data is as reported as at 6 November 2024.

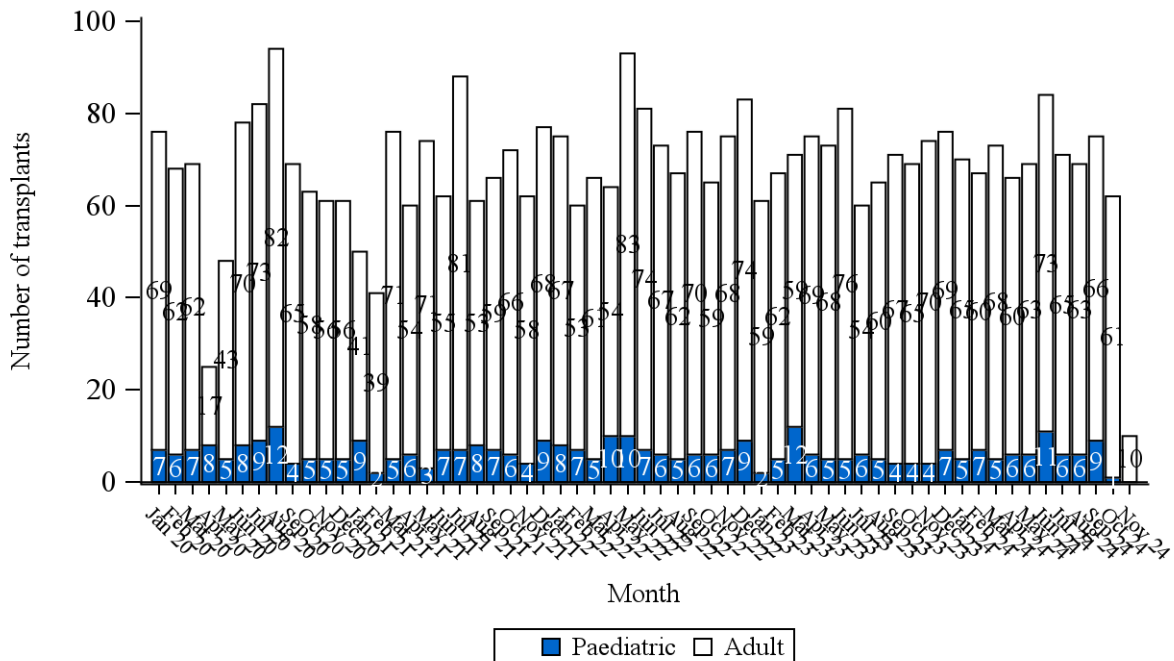
**Figure 7** Number of deceased donor liver transplants performed in the UK, by urgency status, 1 January 2020 to 4 November 2024



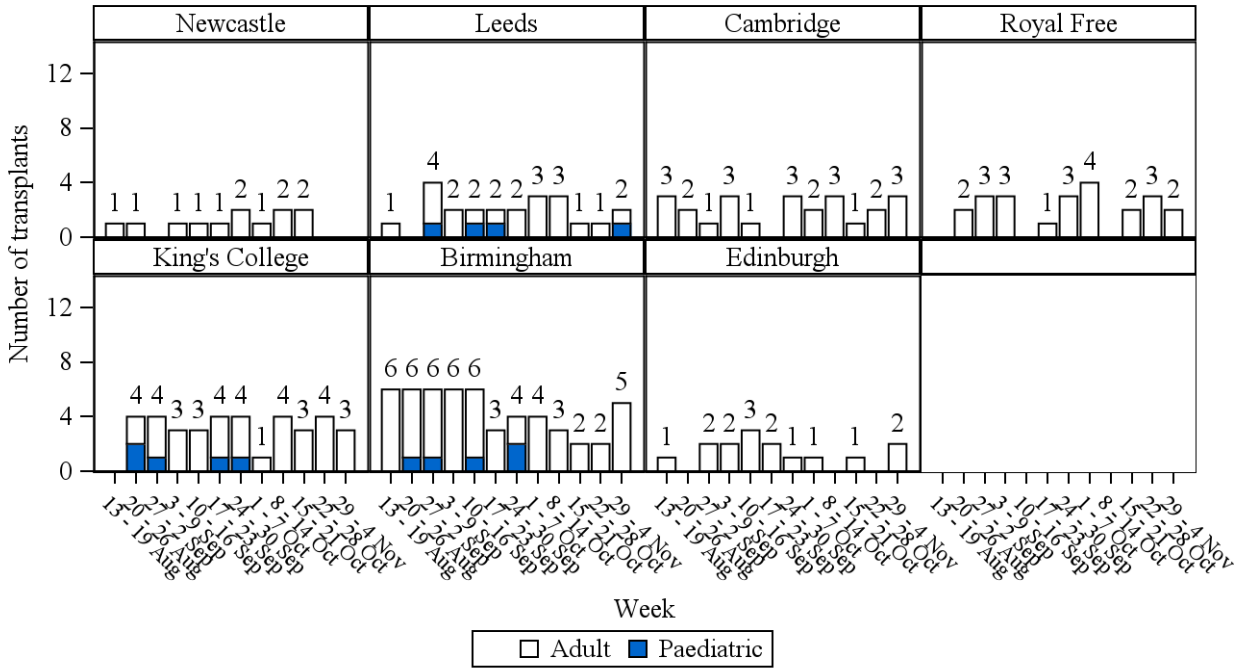
**Figure 8A** Number of deceased donor liver transplants performed in the UK, by transplant centre and urgency status, 13 August 2024 to 4 November 2024



**Figure 9** Number of deceased donor liver transplants performed in the UK, by age group, 1 January 2020 to 4 November 2024



**Figure 10** Number of deceased donor liver transplants performed in the UK, by transplant centre and age group, 13 August 2024 to 4 November 2024



**Table 1A Reasons DBD named patient liver offers were declined for livers transplanted, by centre**

Reason	Transplant centre							Total
	N	L	C	RF	KC	B	E	
Organ not present	1	0	0	0	0	0	0	1
Donor unsuitable - past history	0	1	1	0	3	0	1	6
Donor unsuitable - size	0	0	0	0	1	0	0	1
No suitable recipients	0	0	0	0	0	0	1	1
Centre already transplanting	0	0	0	0	1	0	0	1
Recipient unfit	0	0	1	0	0	0	0	1
Recipient refused	0	0	0	1	0	0	0	1
Recipient did not need transplant	0	0	1	0	0	0	0	1
Organ damage (retrieval injury), please specify	0	0	0	0	1	0	0	1
Poor function - initial assessment	0	0	0	0	0	1	0	1
Size mismatch	0	0	0	0	0	2	0	2
Whole liver unavailable - recipient unsuitable	0	0	0	0	0	0	1	1
Recipient unfit - COVID-19	0	0	0	0	0	0	1	1
Other, please specify - donor unsuitable	0	0	1	0	0	0	0	1
Other, please specify - logistic issues	0	1	1	0	1	0	0	3
Other, please specify - organ unsuitable	0	0	0	0	0	1	0	1
<b>TOTAL</b>	<b>1</b>	<b>2</b>	<b>5</b>	<b>1</b>	<b>7</b>	<b>4</b>	<b>4</b>	<b>24</b>

**Table 1B Reasons DBD fast-track liver offers were declined for livers transplanted, by centre**

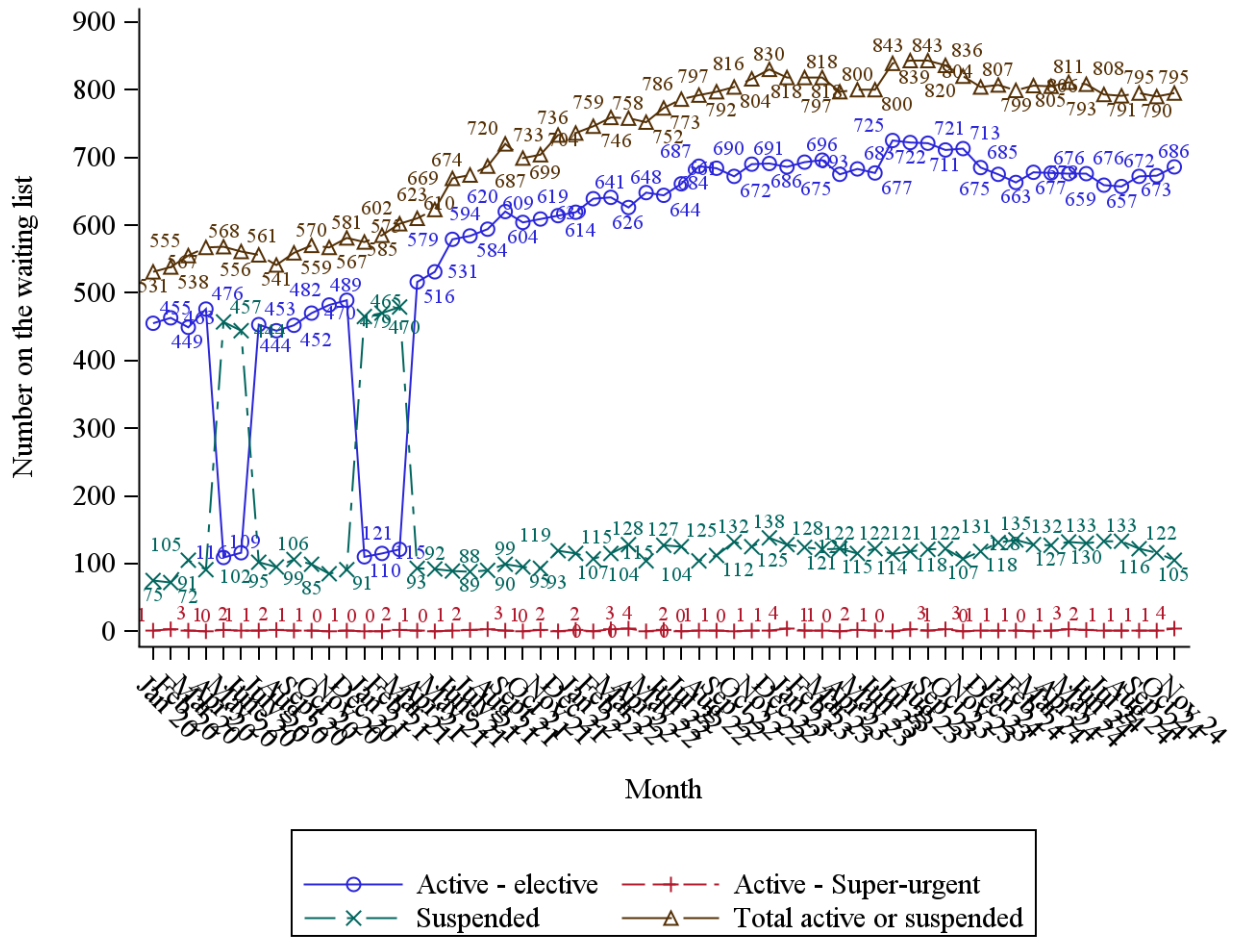
Reason	Transplant centre							Total
	N	L	C	RF	KC	B	E	
Donor unsuitable - age	0	1	0	0	0	0	0	1
Donor unsuitable - past history	0	1	0	1	0	0	0	2
Donor unsuitable - size	0	0	0	0	1	0	1	2
No suitable recipients	0	0	0	1	0	0	0	1
Centre already transplanting	0	0	0	0	1	1	0	2
Anatomical anomaly, please specify	0	0	1	0	0	0	0	1
Ischaemia time too long - cold	1	1	0	1	2	1	3	9
No response to fast track/group offer	3	2	5	0	0	2	2	14
Poor function - initial assessment	0	0	0	0	0	0	1	1
Other, please specify - logistic issues	0	0	2	1	0	1	0	4
<b>TOTAL</b>	<b>4</b>	<b>5</b>	<b>8</b>	<b>4</b>	<b>4</b>	<b>5</b>	<b>7</b>	<b>37</b>

**Table 1C Reasons DCD liver offers were declined for livers transplanted, by centre**

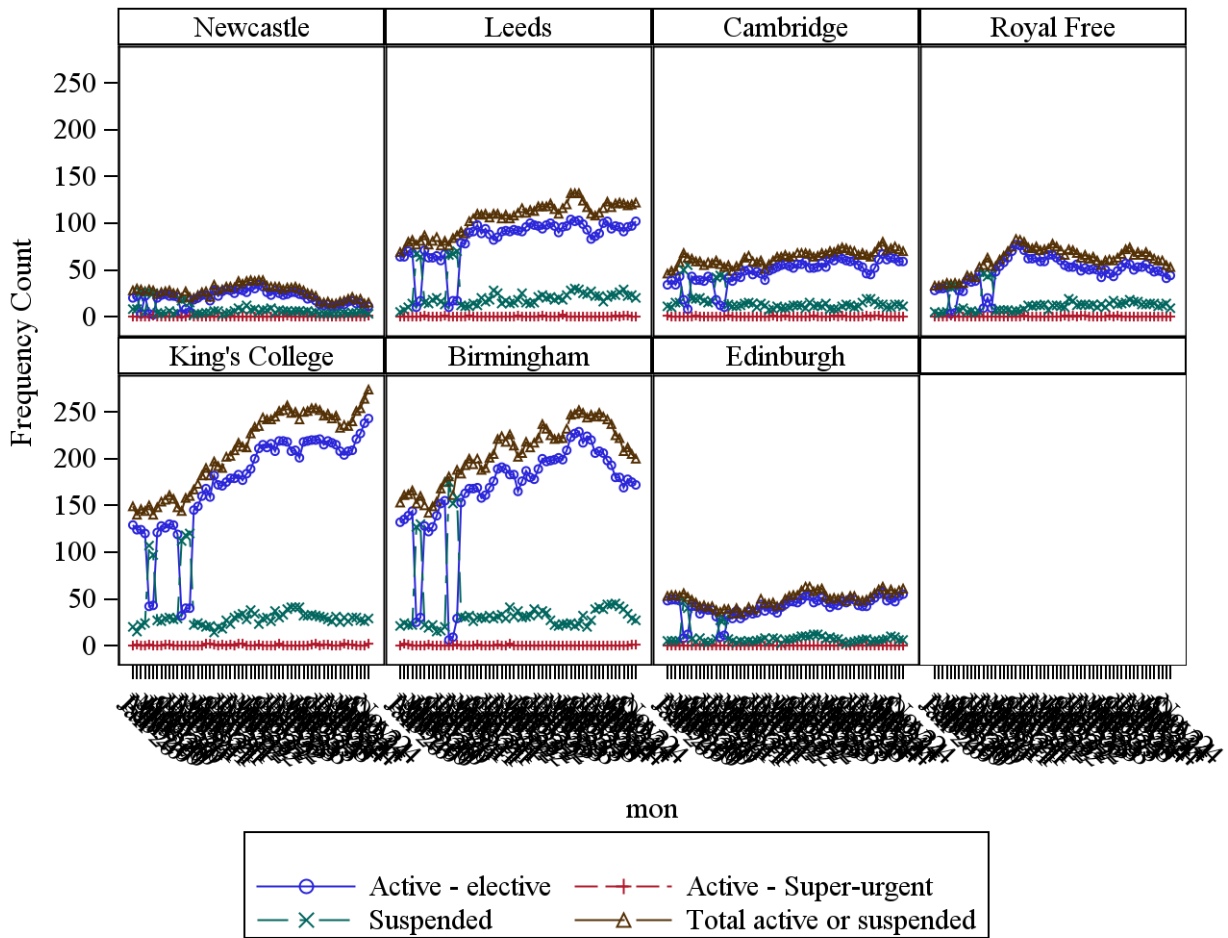
Reason	Transplant centre							Total
	N	L	C	RF	KC	B	E	
Donor unsuitable - age	0	0	1	1	1	0	0	3
Donor unsuitable - past history	0	2	3	1	2	0	1	9
No suitable recipients	0	0	1	1	0	0	0	2
Centre already transplanting	0	2	1	0	0	0	0	3
Ischaemia time too long - cold	0	1	0	0	0	0	2	3
No beds	0	0	0	0	0	1	0	1
No response to fast track/group offer	3	0	1	0	0	0	0	4
Donor unsuitable - virology	0	0	0	1	0	0	0	1
Poor function at retrieval	0	0	0	1	0	0	0	1
ABO mismatch	1	0	0	0	0	0	1	2
Poor function following machine perfusion	0	0	0	0	1	0	1	2
Other, please specify - donor unsuitable	1	0	0	0	2	0	0	3
Other, please specify - logistic issues	0	0	0	0	1	0	0	1
<b>TOTAL</b>	<b>5</b>	<b>5</b>	<b>7</b>	<b>5</b>	<b>7</b>	<b>1</b>	<b>5</b>	<b>35</b>



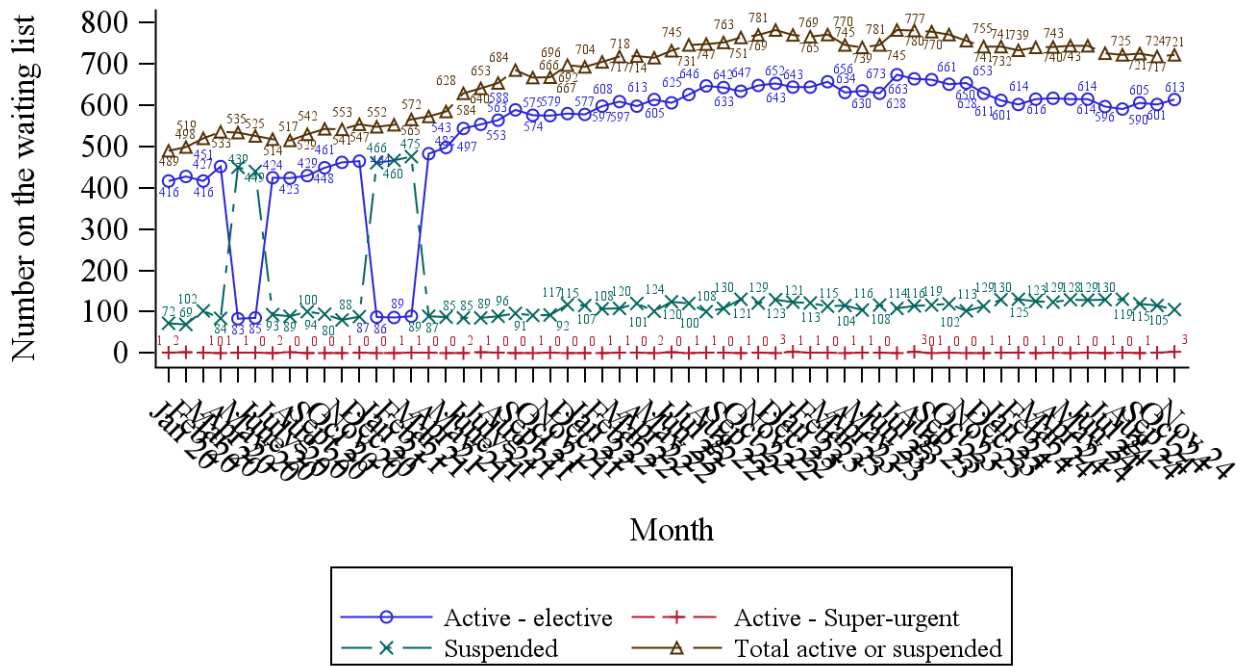
**Figure 11** Number of patients on the liver transplant list at the end of each month, January 2020 - 10 November 2024



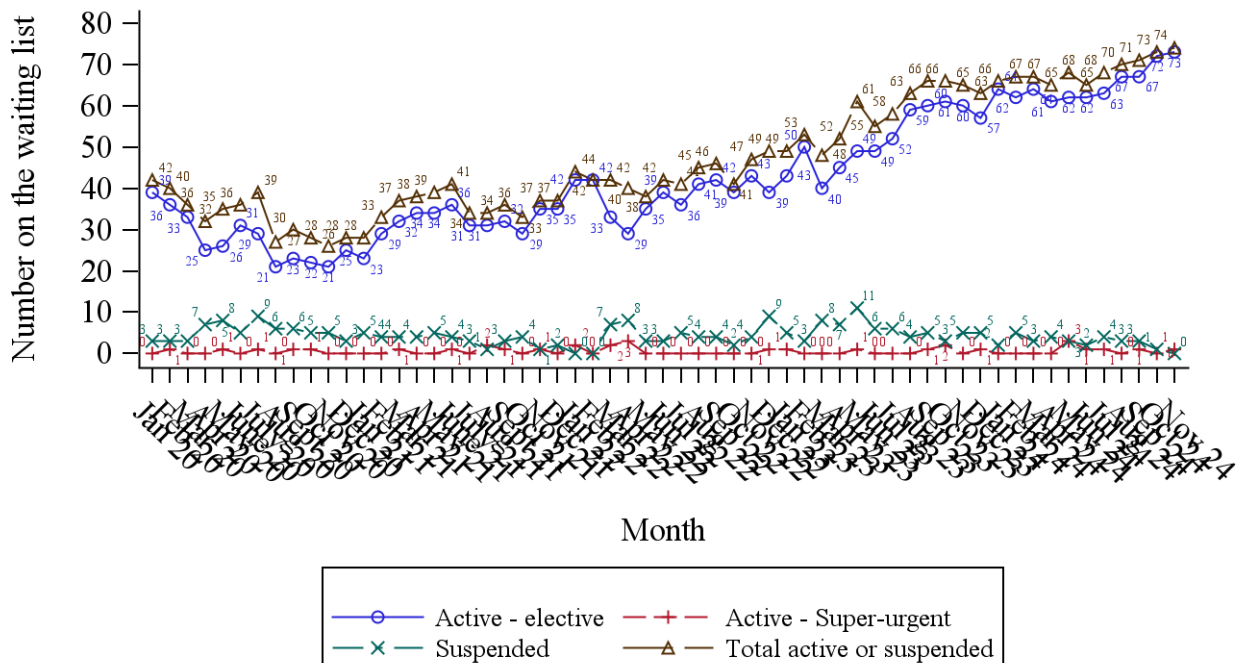
**Figure 12** Number of patients on the liver transplant list at the end of each month, by centre, January 2020 - 10 November 2024



**Figure 13** Number of adult patients on the liver transplant list at the end of each month, January 2020 - 10 November 2024



**Figure 14** Number of paediatric patients on the liver transplant list at the end of each month, January 2020 - 10 November 2024



686 patients active on the UK elective liver list on 10 November 2024:

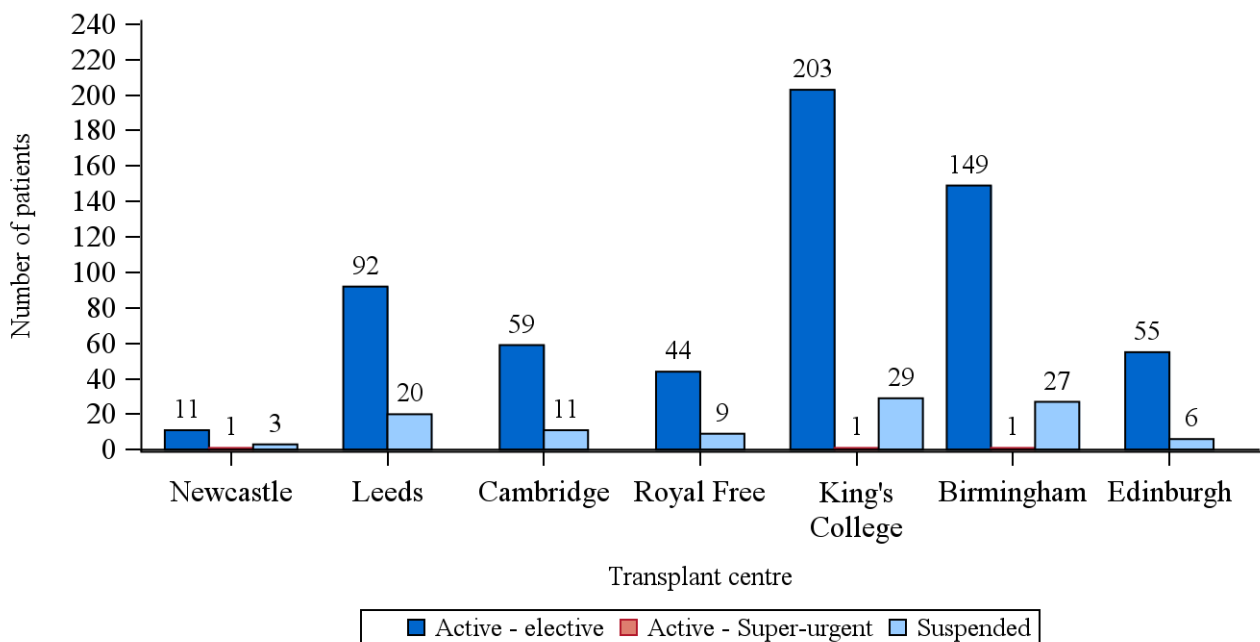
- 613 adult
- 73 paediatric

One adult blood group A patient at Birmingham is currently active on the super-urgent list, one adult blood group O patient at Newcastle and one adult blood group O patient at King's College are currently active on the super-urgent list as at 10 November 2024. One paediatric blood group A patient at King's College is currently active on the super-urgent list as at 10 November 2024.

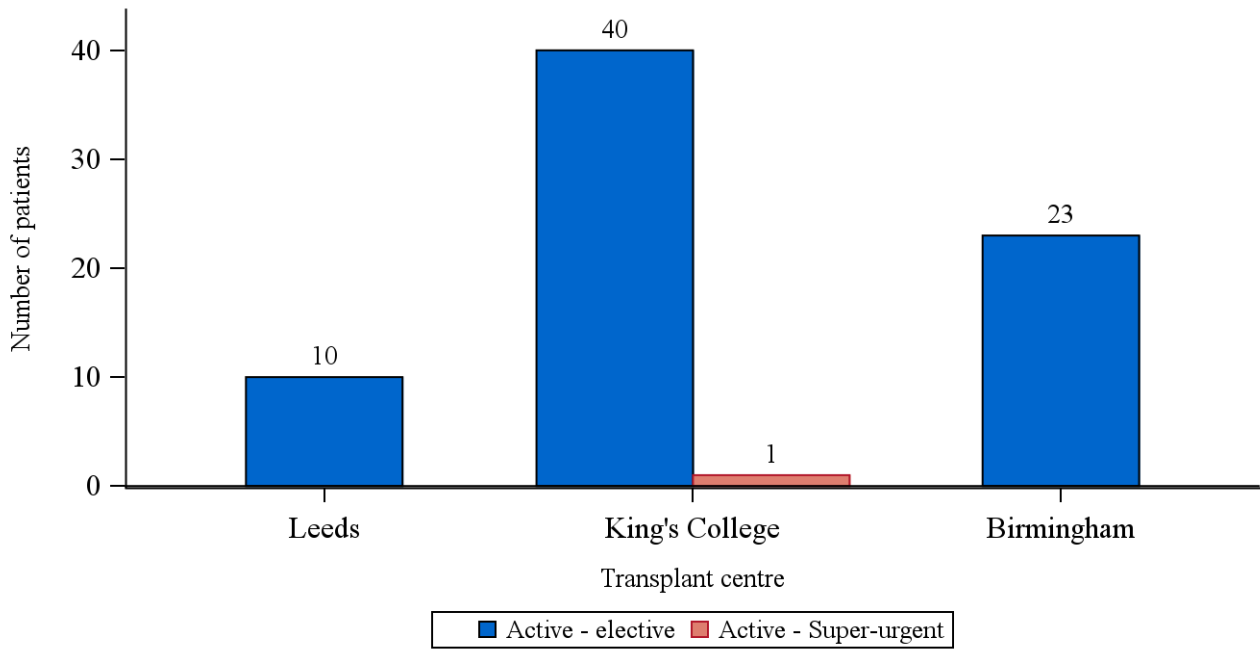
Additional 12 patients currently active on intestinal list and 11 suspended

- 9 also require a liver (7 active and 2 suspended)

**Figure 15** Total number of adult patients on the elective UK liver transplant list on 10 November 2024, by registration status



**Figure 16** Total number of paediatric patients on the elective UK liver transplant list on 10 November 2024, by registration status



**Table 2 Reason given for recipient suspensions by transplant centre as at 10 November 2024**

Status reason	Transplant centre							Total
	N	L	C	RF	KC	B	E	
Condition improved	0	5	3	2	3	3	0	16
Condition deteriorated/patient unfit/medical contra-indication	1	12	6	4	11	13	2	49
Medical investigations	1	1	1	2	6	4	2	17
Patient/parent request	0	1	1	0	4	6	2	14
Patient/non-compliant	0	0	0	1	3	0	0	4
Patient temporarily unavailable for transplant for non-medical reasons	1	0	0	0	1	0	0	2
Other (please specify)	0	1	0	0	1	1	0	3
<b>TOTAL</b>	<b>3</b>	<b>20</b>	<b>11</b>	<b>9</b>	<b>29</b>	<b>27</b>	<b>6</b>	<b>105</b>

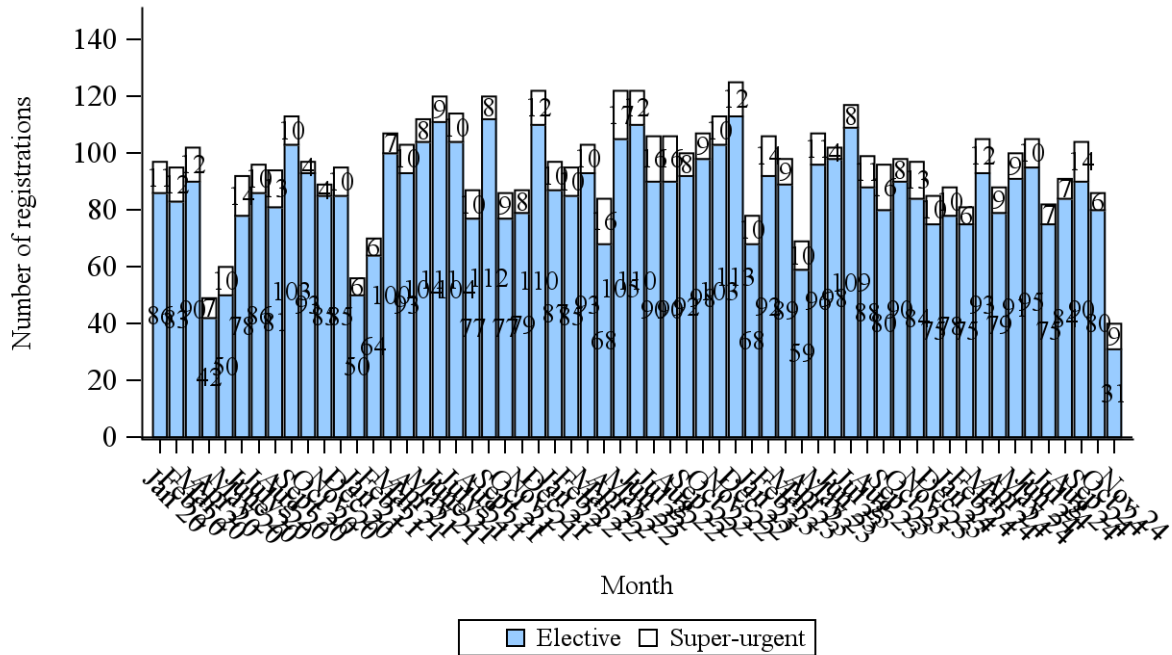
**Table 2A Time suspended by reason suspended for patients suspended as at 10 November 2024**

Status reason							N (%) suspended for >6 months
	N	%	Median	IQR	Min	Max	
Condition improved	16	15	132	79.5-302	4	2428	5 (31)
Condition deteriorated/patient unfit/medical contra-indication	49	47	81	17-139	1	1012	11 (22)
Medical investigations	17	16	58	23-128	3	290	3 (18)
Patient/parent request	14	13	62.5	13-177	2	705	3 (21)
Patient/non-compliant	4	4	114	41.5-254	4	359	1 (25)
Patient temporarily unavailable for transplant for non-medical reasons	2	2	176.5	166-187	166	187	1 (50)
Other (please specify)	3	3	37	18-156	18	156	0 (0)
<b>TOTAL</b>	<b>105</b>	<b>100</b>	<b>82</b>	<b>23-166</b>	<b>1</b>	<b>2428</b>	<b>24 (23)</b>

**Table 2B Time suspended by transplant centre for patients suspended as at 10 November 2024**

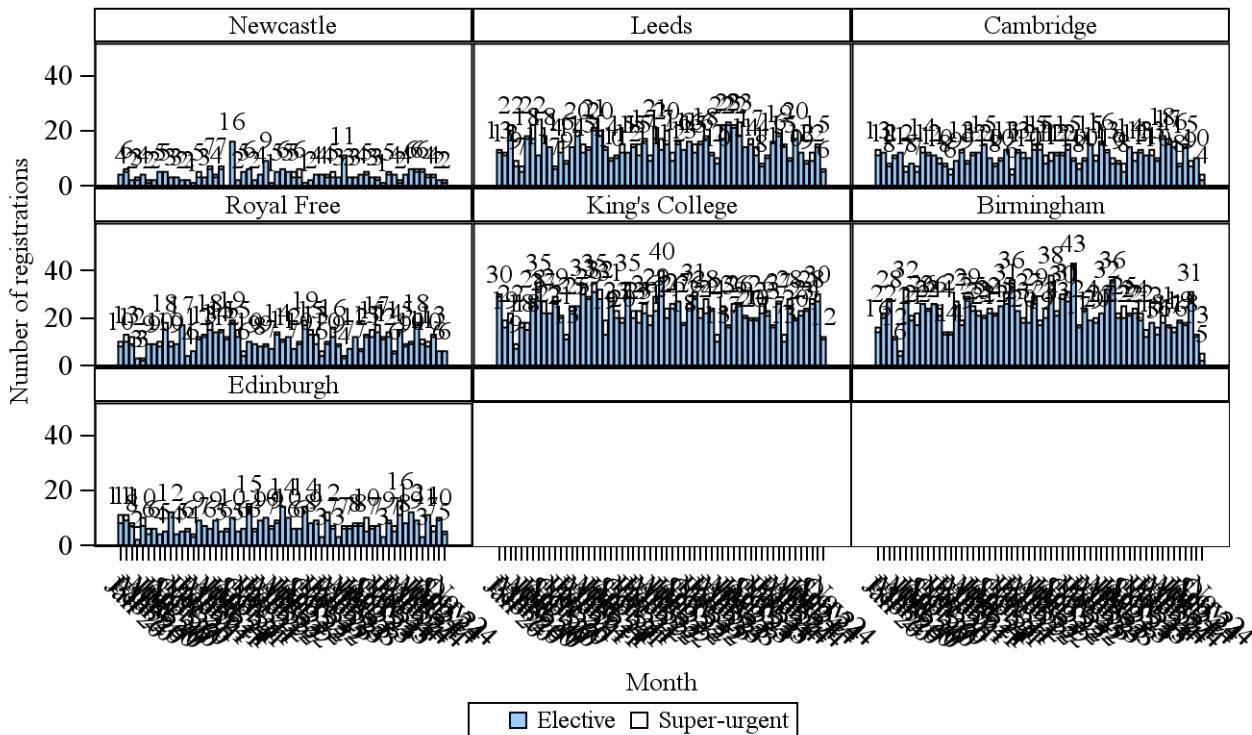
Centre							N (%) suspended for >6 months
	N	%	Median	IQR	Min	Max	
Newcastle	3	3	187	34-310	34	310	2 (67)
Leeds	20	19	95.5	32-193.5	8	471	5 (25)
Cambridge	11	10	114	18-140	2	215	1 (9)
Royal Free	9	9	61	58-240	38	359	3 (33)
King's College	29	28	65	20-205	3	2428	8 (28)
Birmingham	27	26	102	19-165	4	381	5 (19)
Edinburgh	6	6	28	2-117	1	128	0 (0)
<b>TOTAL</b>	<b>105</b>	<b>100</b>	<b>82</b>	<b>23-166</b>	<b>1</b>	<b>2428</b>	<b>24 (23)</b>

**Figure 17** Number of new registrations onto the UK liver transplant list, by urgency status, 1 January 2020 to 10 November 2024

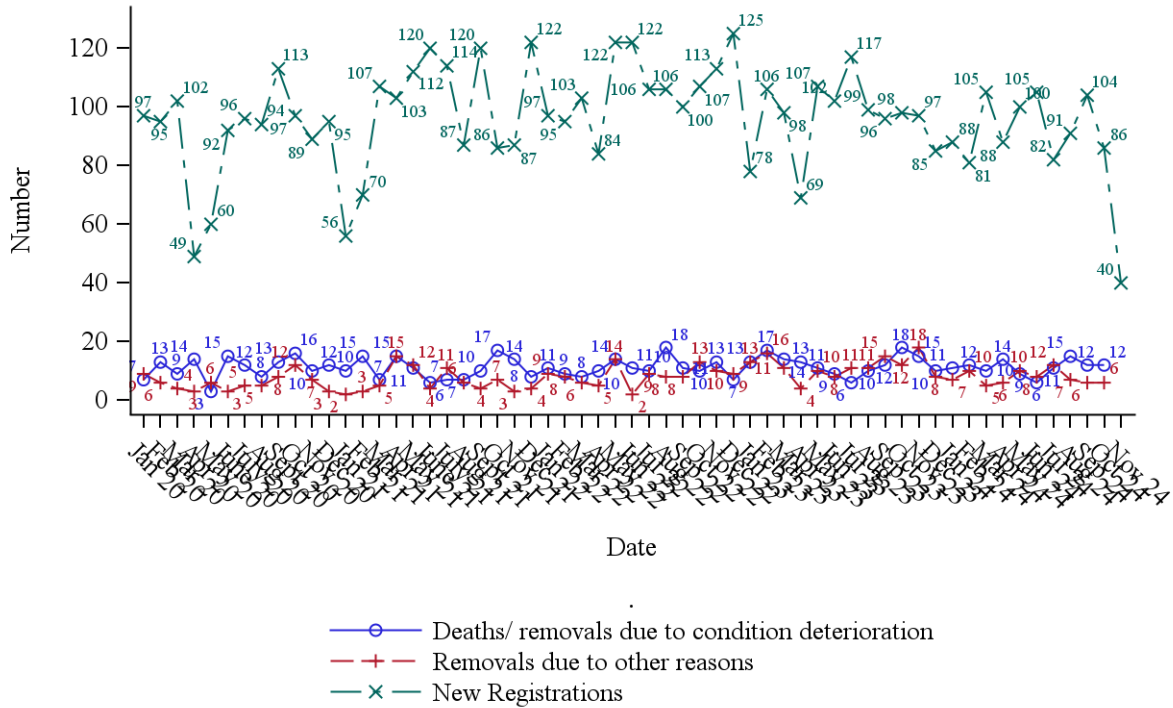


There was 1 ACLF patient who was registered to the Hepatoblastoma tier from 1 October 2024 to 1 November 2024.

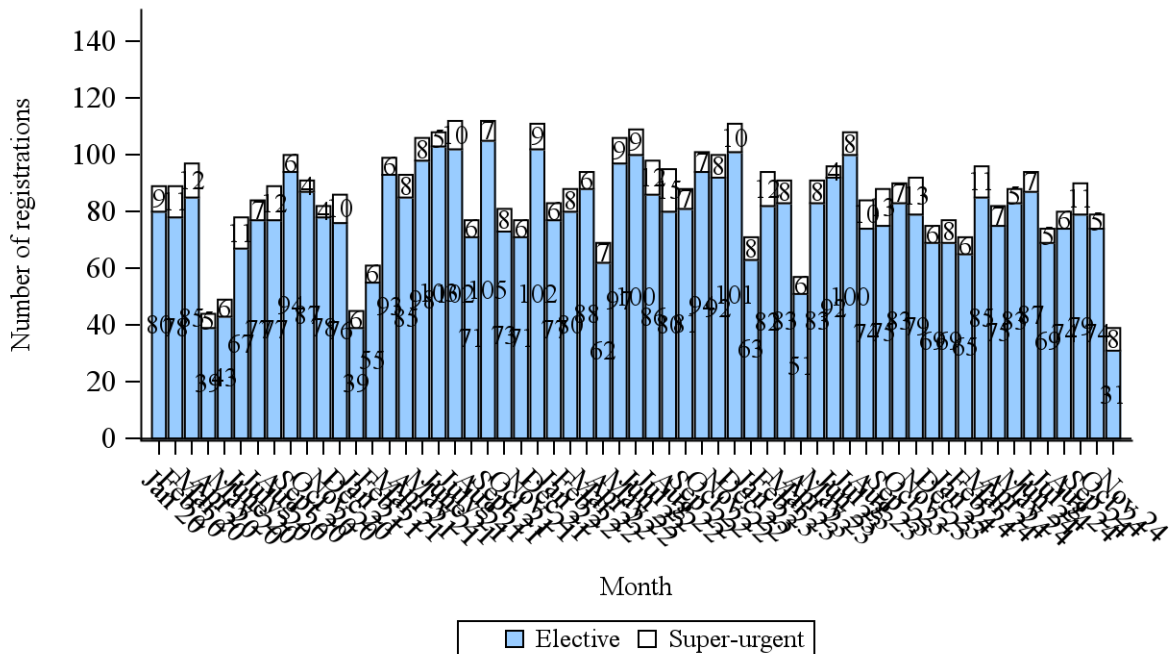
**Figure 17A** Number of new registrations onto the UK liver transplant list, by transplant centre and urgency status, 1 January 2020 to 10 November 2024



**Figure 18** Number of registrations, deaths and removals by month since 1 January 2020

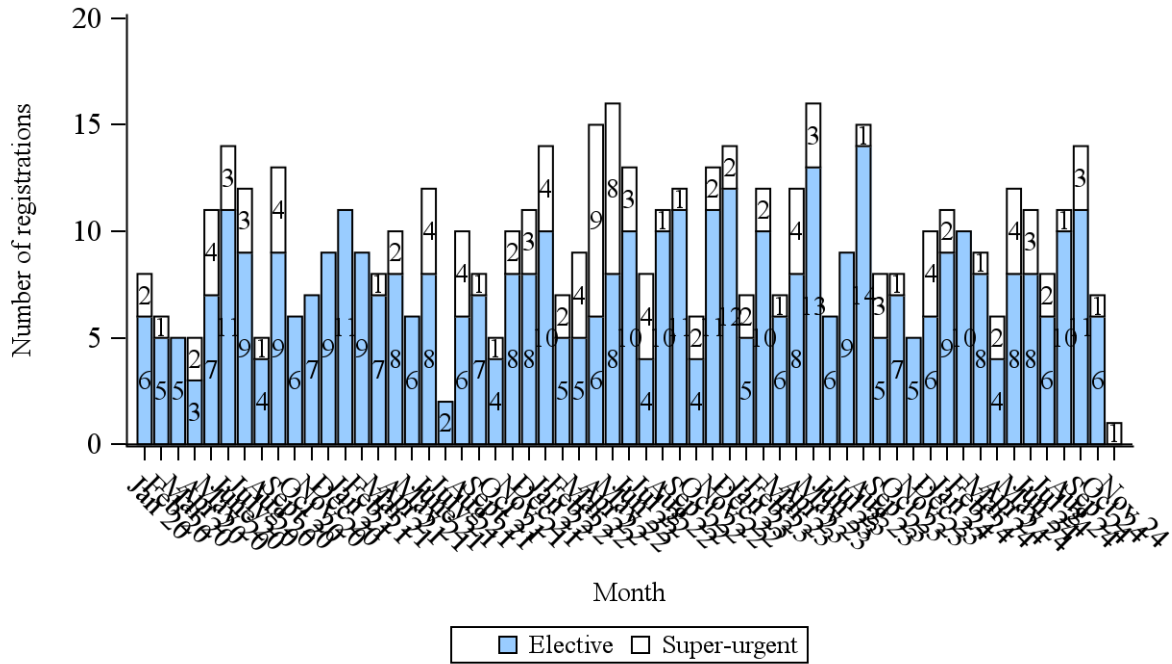


**Figure 19A** Number of new adult registrations onto the UK liver transplant list, by urgency status, 1 January 2020 to 10 November 2024

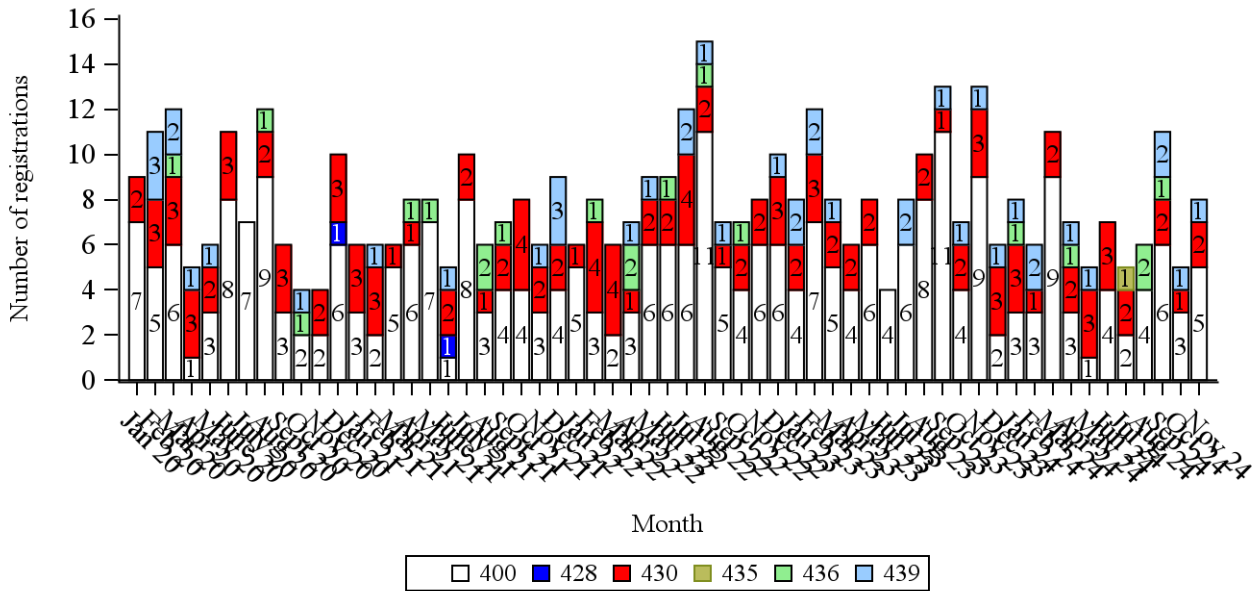




**Figure 19B** Number of new paediatric registrations onto the UK liver transplant list, by urgency status, 1 January 2020 to 10 November 2024



**Figure 20A** Number of new adult registrations onto the UK super-urgent liver transplant list, by primary liver indication, 1 January 2020 to 10 November 2024



**Figure 20B** Number of new paediatric registrations onto the UK super-urgent liver transplant list, by primary liver indication, 1 January 2020 to 10 November 2024

