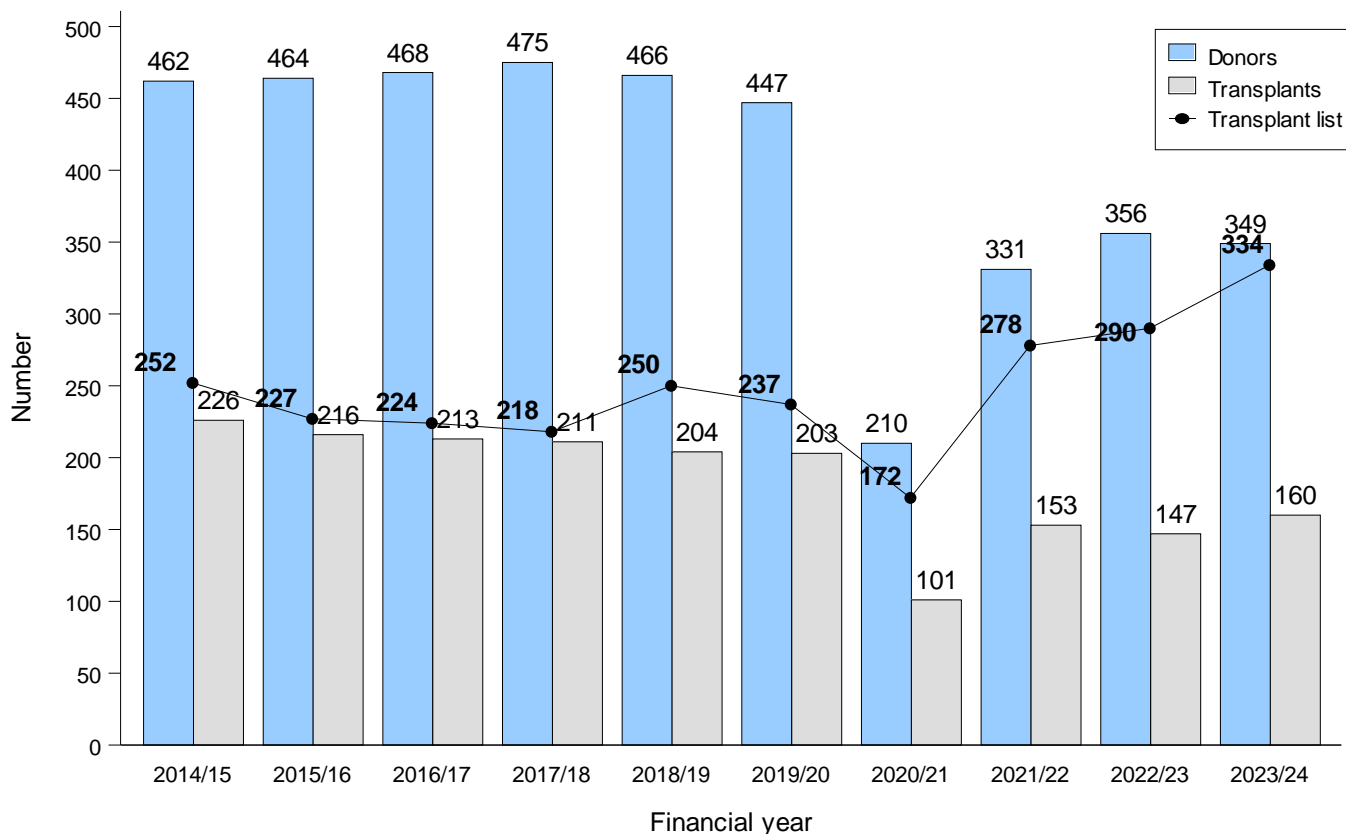


**NHS BLOOD & TRANSPLANT  
ORGAN DONATION AND TRANSPLANTATION DIRECTORATE  
PANCREAS ADVISORY GROUP AND ISLET STEERING GROUP  
TRANSPLANT LIST AND TRANSPLANT ACTIVITY**

**Figure 1 Deceased pancreas and islet programme in the UK, 1 April 2014 - 31 March 2024, Number of donors, transplants and patients on the active transplant list at 31 March**



**Table 1 Patients on the pancreas transplant lists at 31 March 2024 (2023) in the UK, by centre**

Centre	Kidney/ pancreas	Kidney/ islet	Active transplant lists			TOTAL
			Pancreas alone	Routine	Islet Priority	

<b>Table 1</b>		<b>Patients on the pancreas transplant lists at 31 March 2024 (2023) in the UK, by centre</b>										
<b>Centre</b>	<b>Kidney/ pancreas</b>		<b>Kidney/ islet</b>		<b>Active transplant lists</b>						<b>TOTAL</b>	
					<b>Pancreas alone</b>		<b>Routine</b>		<b>Islet Priority</b>			
Cambridge	23	(19)	-	.	0	(0)	-	.	-	.	<b>23</b>	<b>(19)</b>
Cardiff	13	(10)	-	.	0	(0)	-	.	-	.	<b>13</b>	<b>(10)</b>
Edinburgh	42	(28)	5	(2)	0	(0)	5	(4)	2	(0)	<b>54</b>	<b>(34)</b>
Guys	41	(32)	-	.	0	(0)	-	.	-	.	<b>41</b>	<b>(32)</b>
Manchester	90	(88)	7	(8)	3	(3)	1	(0)	2	(1)	<b>103</b>	<b>(100)</b>
Newcastle	14	(9)	0	(0)	2	(1)	4	(4)	0	(1)	<b>20</b>	<b>(15)</b>
Oxford	66	(64)	5	(3)	0	(3)	1	(2)	0	(0)	<b>72</b>	<b>(72)</b>
WLRTC	8	(8)	-	.	0	(0)	-	.	-	.	<b>8</b>	<b>(8)</b>
King's College	-	.	0	(0)	-	.	0	(0)	0	(0)	<b>0</b>	<b>(0)</b>
Royal Free	-	.	0	(0)	-	.	0	(0)	0	(0)	<b>0</b>	<b>(0)</b>
<b>TOTAL</b>	<b>297</b>	<b>(258)</b>	<b>17</b>	<b>(13)</b>	<b>5</b>	<b>(7)</b>	<b>11</b>	<b>(10)</b>	<b>4</b>	<b>(2)</b>	<b>334</b>	<b>(290)</b>

**Table 2 Pancreas donation rates for deceased donors in the UK,  
1 April 2023 - 31 March 2024, by Country/ Strategic Health Authority**

Country/ Strategic Health Authority of residence	Pancreas donors (pmp)				TOTAL	
	DBD		DCD			
North East	11	(4.1)	2	(0.7)	13	(4.9)
North West	23	(3.1)	13	(1.7)	36	(4.8)
Yorkshire and The Humber	20	(3.6)	15	(2.7)	35	(6.3)
<b>North of England</b>	<b>54</b>	<b>(3.4)</b>	<b>30</b>	<b>(1.9)</b>	<b>84</b>	<b>(5.3)</b>
East Midlands	15	(3.0)	9	(1.8)	24	(4.9)
West Midlands	15	(2.5)	9	(1.5)	24	(4.0)
East of England	21	(3.3)	14	(2.2)	35	(5.5)
<b>Midlands and East</b>	<b>51</b>	<b>(2.9)</b>	<b>32</b>	<b>(1.8)</b>	<b>83</b>	<b>(4.8)</b>
<b>London</b>	<b>22</b>	<b>(2.5)</b>	<b>11</b>	<b>(1.2)</b>	<b>33</b>	<b>(3.7)</b>
South East Coast	21	(4.3)	12	(2.5)	33	(6.8)
South Central	19	(4.2)	1	(0.2)	20	(4.4)
South West	22	(3.8)	12	(2.1)	34	(5.9)
<b>South of England</b>	<b>62</b>	<b>(4.1)</b>	<b>25</b>	<b>(1.7)</b>	<b>87</b>	<b>(5.7)</b>
<b>England</b>	<b>189</b>	<b>(3.3)</b>	<b>98</b>	<b>(1.7)</b>	<b>287</b>	<b>(5.0)</b>
Isle of Man	0	(0.0)	0	(0.0)	0	(0.0)
Channel Islands	0	(0.0)	0	(0.0)	0	(0.0)
<b>Wales</b>	<b>10</b>	<b>(3.2)</b>	<b>2</b>	<b>(0.6)</b>	<b>12</b>	<b>(3.8)</b>
<b>Scotland</b>	<b>20</b>	<b>(3.7)</b>	<b>12</b>	<b>(2.2)</b>	<b>32</b>	<b>(5.9)</b>
<b>Northern Ireland</b>	<b>14</b>	<b>(7.3)</b>	<b>4</b>	<b>(2.1)</b>	<b>18</b>	<b>(9.4)</b>
<b>TOTAL<sup>1</sup></b>	<b>233</b>	<b>(3.4)</b>	<b>116</b>	<b>(1.7)</b>	<b>349</b>	<b>(5.2)</b>

<sup>1</sup> Includes 3 donors where the hospital postcode was used in place of an unknown donor postcode

**Table 3 DBD Pancreas transplants, 1 April 2023 - 31 March 2024 (2023) by centre**

Centre	Transplant type						Total
	SPK	SIK	PTA	PAK	Islet Routine	Priority	

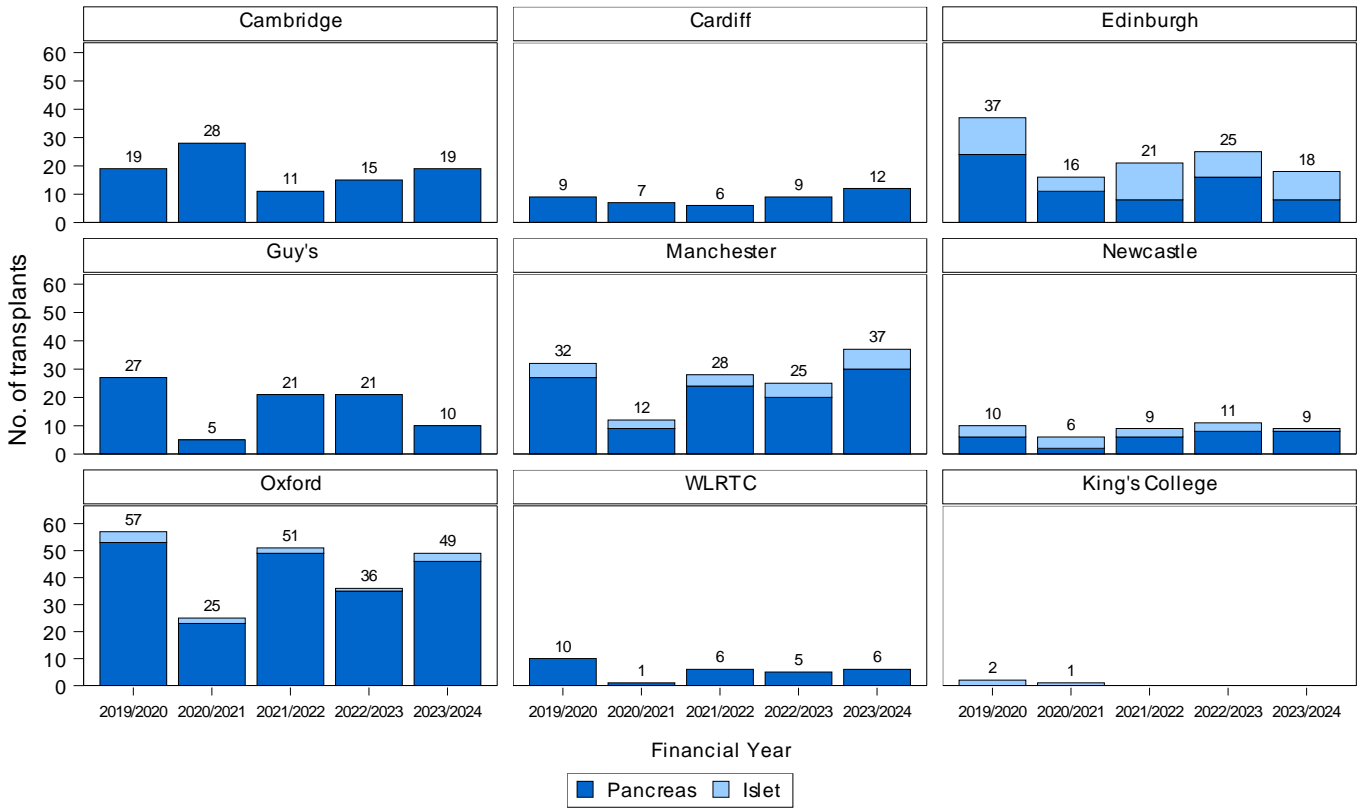
<b>Table 3 DBD Pancreas transplants, 1 April 2023 - 31 March 2024 (2023) by centre</b>														
<b>Centre</b>	<b>Transplant type</b>												<b>Total</b>	
	<b>SPK</b>		<b>SIK</b>		<b>PTA</b>		<b>PAK</b>		<b>Islet</b>					
									<b>Routine</b>		<b>Priority</b>			
Cambridge	6	(10)	-	-	0	(0)	1	(0)	-	-	-	-	<b>7</b>	<b>(10)</b>
Cardiff	8	(4)	-	-	0	(0)	0	(0)	-	-	-	-	<b>8</b>	<b>(4)</b>
Edinburgh	7	(11)	1	(1)	0	(0)	0	(0)	4	(2)	2	(3)	<b>14</b>	<b>(17)</b>
Guys	5	(12)	-	-	0	(0)	0	(0)	-	-	-	-	<b>5</b>	<b>(12)</b>
Manchester	16	(13)	3	(3)	0	(2)	2	(0)	1	(0)	1	(2)	<b>23</b>	<b>(20)</b>
Newcastle	5	(5)	0	(0)	1	(0)	0	(0)	0	(2)	1	(1)	<b>7</b>	<b>(8)</b>
Oxford	22	(23)	1	(0)	4	(2)	2	(1)	2	(1)	0	(0)	<b>31</b>	<b>(27)</b>
WLRTC	4	(3)	-	-	0	(0)	0	(0)	-	-	-	-	<b>4</b>	<b>(3)</b>
Royal Free	-	-	0	(0)	-	-	-	-	0	(0)	0	(0)	<b>0</b>	<b>(0)</b>
King's College	-	-	0	(0)	-	-	-	-	0	(0)	0	(0)	<b>0</b>	<b>(0)</b>
<b>TOTAL</b>	<b>73</b>	<b>(81)</b>	<b>5</b>	<b>(4)</b>	<b>5</b>	<b>(4)</b>	<b>5</b>	<b>(1)</b>	<b>7</b>	<b>(5)</b>	<b>4</b>	<b>(6)</b>	<b>99</b>	<b>(101)</b>

WLRTC - West London Renal and Transplant Centre

<b>Table 4 DCD Pancreas transplants, 1 April 2023 - 31 March 2024 (2023) by centre</b>														
<b>Centre</b>	<b>Transplant type</b>												<b>Total</b>	
	<b>SPK</b>		<b>SIK</b>		<b>PTA</b>		<b>PAK</b>		<b>Islet</b>					
									<b>Routine</b>		<b>Priority</b>			
Cambridge	12	(5)	-	-	0	(0)	0	(0)	-	-	-	-	<b>12</b>	<b>(5)</b>
Cardiff	4	(3)	-	-	0	(0)	0	(2)	-	-	-	-	<b>4</b>	<b>(5)</b>
Edinburgh	1	(5)	3	(1)	0	(0)	0	(0)	0	(1)	0	(1)	<b>4</b>	<b>(8)</b>
Guys	5	(9)	-	-	0	(0)	0	(0)	-	-	-	-	<b>5</b>	<b>(9)</b>
Manchester	11	(4)	2	(0)	0	(1)	1	(0)	0	(0)	0	(0)	<b>14</b>	<b>(5)</b>
Newcastle	2	(3)	0	(0)	0	(0)	0	(0)	0	(0)	0	(0)	<b>2</b>	<b>(3)</b>
Oxford	18	(9)	0	(0)	0	(0)	0	(0)	0	(0)	0	(0)	<b>18</b>	<b>(9)</b>
WLRTC	2	(2)	-	-	0	(0)	0	(0)	-	-	-	-	<b>2</b>	<b>(2)</b>
Royal Free	-	-	0	(0)	-	-	-	-	0	(0)	0	(0)	<b>0</b>	<b>(0)</b>
King's College	-	-	0	(0)	-	-	-	-	0	(0)	0	(0)	<b>0</b>	<b>(0)</b>
<b>TOTAL</b>	<b>55</b>	<b>(40)</b>	<b>5</b>	<b>(1)</b>	<b>0</b>	<b>(1)</b>	<b>1</b>	<b>(2)</b>	<b>0</b>	<b>(1)</b>	<b>0</b>	<b>(1)</b>	<b>61</b>	<b>(46)</b>

WLRTC - West London Renal and Transplant Centre

**Figure 2 Total number of pancreas transplants by centre and transplant type, 1 April 2019 - 31 March 2024**



**Rhiannon Wallis  
Statistics and Clinical Research  
2024**

**September**