

A thick, blue, wavy line that curves across the top of the page, starting from the left edge and ending at the right edge.

Recipient and Living Donor Coordinator Induction 2024

Facilitated by

Laura Stamp (Lead Nurse Recipient Coordinator, NHSBT)

Jen Lumsdaine (Lead Nurse Living Donation, NHSBT)

NHSBT, the Organisation

Who, What, Why?



UK
Transplant



2005

Blood and Transplant



<https://www.odt.nhs.uk/deceased-donation/education-and-training/>
<https://www.youtube.com/watch?v=Er02SQXBNG0>

Core Values



Caring



Expert



Quality



Who we are today

Blood a

Employment of SNs

Donor characterisation

Organ retrieval

Organ offering and allocation schemes

Transplant Registry

The NHS logo, consisting of the letters 'NHS' in a bold, white, sans-serif font inside a blue rectangular box.

Blood and Transplant

Clinical Services



**Organ and Tissue Donation and
Transplantation (OTDT) Directorate**

Home

Deceased donation



Living donation



Retrieval



Transplantation



Statistics and reports



Information for patients

ODT structure & standards



Home / ODT structure & standards / Clinical leadership

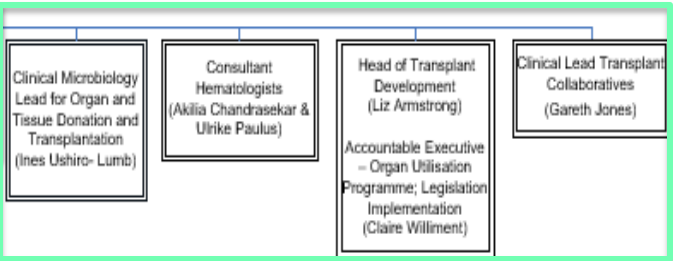
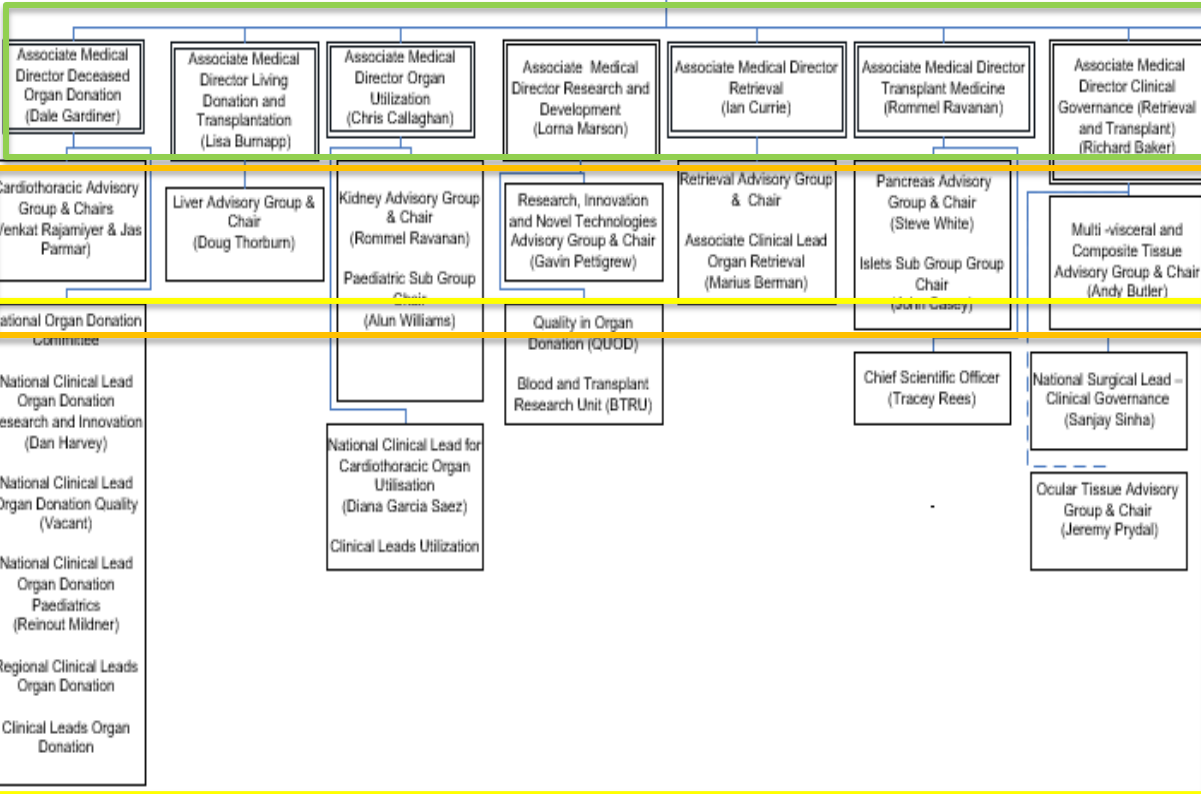
Clinical leadership

Meeting papers and minutes from key ODT management groups

<https://www.odt.nhs.uk/odt-structures-and-standards/clinical-leadership/>

OTDT Clinical Team

OTDT Medical Director
(Derek Manas)



OTDT Director (Anthony Clarkson)

4 Assistant Directors

- UK Commissioning & Service Development (Karen Quinn)
- Strategy, Transformation & Business Development (Ben Hume)
- Organ Donation (John Richardson)
- Chief Nurse (Olive McGowan)

Organ and Tissue Advisory Groups

- Heart and Lung (C-CTAG) and (L-CTAG)
- Liver (LAG)
- Pancreas (PAG)
- Kidney (KAG) and Paediatric KAG (KPAG)
- Multi-visceral and Composite Tissue (MCTAG)
- Retrieval (RAG)
- Ocular (OTAG)
- Multi-disciplinary professionals and lay representatives
- Patient Advisory Groups
- Research Feasibility Group

What do they do?

- Work with NHSBT to establish policies (e.g.) for organ offering, performance monitoring, best practice
- Discuss and advise on organ/tissue specific issues
- Consider how changes in practice will impact on patients and existing policies
- Consider organ/tissue specific decision-making in the context of other organ/tissue groups and possible impact on patients
- Determine the rules governing an organ/tissue specific group

A thick, blue, wavy line that curves across the top of the page, separating the header from the main content area.

Collaborative organisations

Regulation



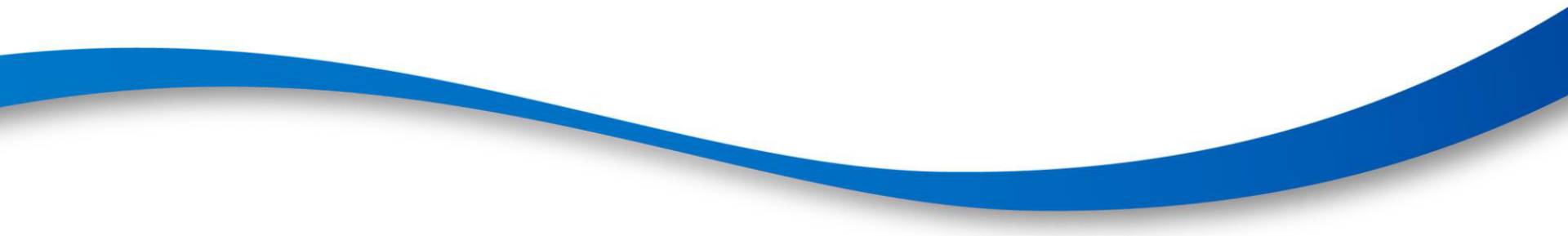


Representing all
professionals involved
in transplantation
in the UK



Learn More



- Education
 - Training
 - Standards
 - Guidelines
 - Innovation
- 
- A thick, blue, wavy line that curves across the bottom of the slide, starting from the left edge and ending at the right edge.



UK GUIDELINES ON TRANSPLANTATION FROM DECEASED DONORS AFTER CIRCULATORY DEATH

- <https://bts.org.uk/transplantation-from-deceased-donors-after-circulatory-death/>



Guidelines for
Living Donor Kidney
Transplantation

—
Fourth Edition
March 2018

https://bts.org.uk/wp-content/uploads/2018/07/FINAL_LDKT-guidelines_June-2018.pdf

Overview

The British Transplantation Society Nurse and Allied Health Care Professional Chapter is a supportive network for all Nurses and Allied Health Care Professionals (AHPs) working within organ donation and transplantation.

Its aim is to encourage collaborative and inclusive working, the sharing of best evidence based practice, sharing of research and education and to celebrate innovation in transplantation in particular highlighting innovation which is led by Transplant based Nurses and AHPs.

<https://bts.org.uk/chapters-committees/chapter-of-nurses/>