

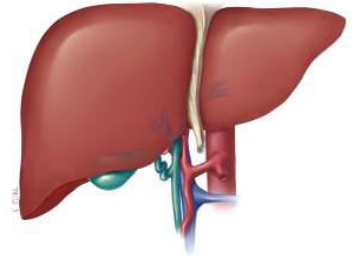
Living Donor Liver Transplantation Project

Lisa Burnapp

Associate Medical Director

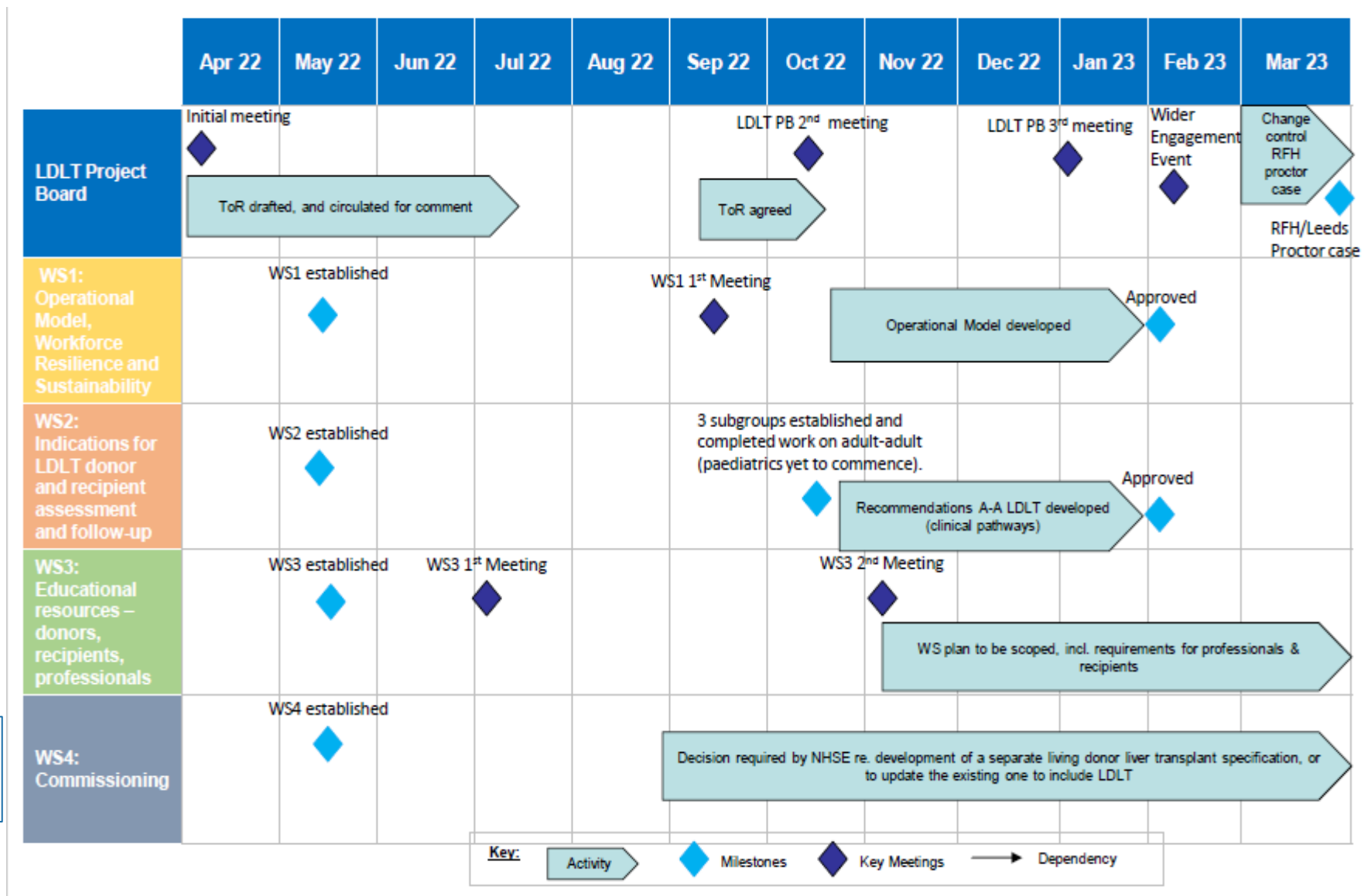
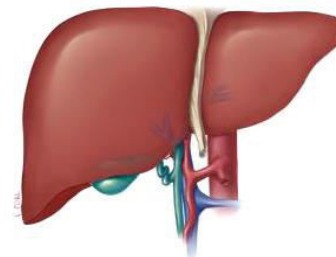
Living Donation and Transplantation, NHSBT

Aim



Expand the LDLT programme UK-wide
Including adult-to-adult LDLT

2022/2023- Adult-Adult LDLT



The Board

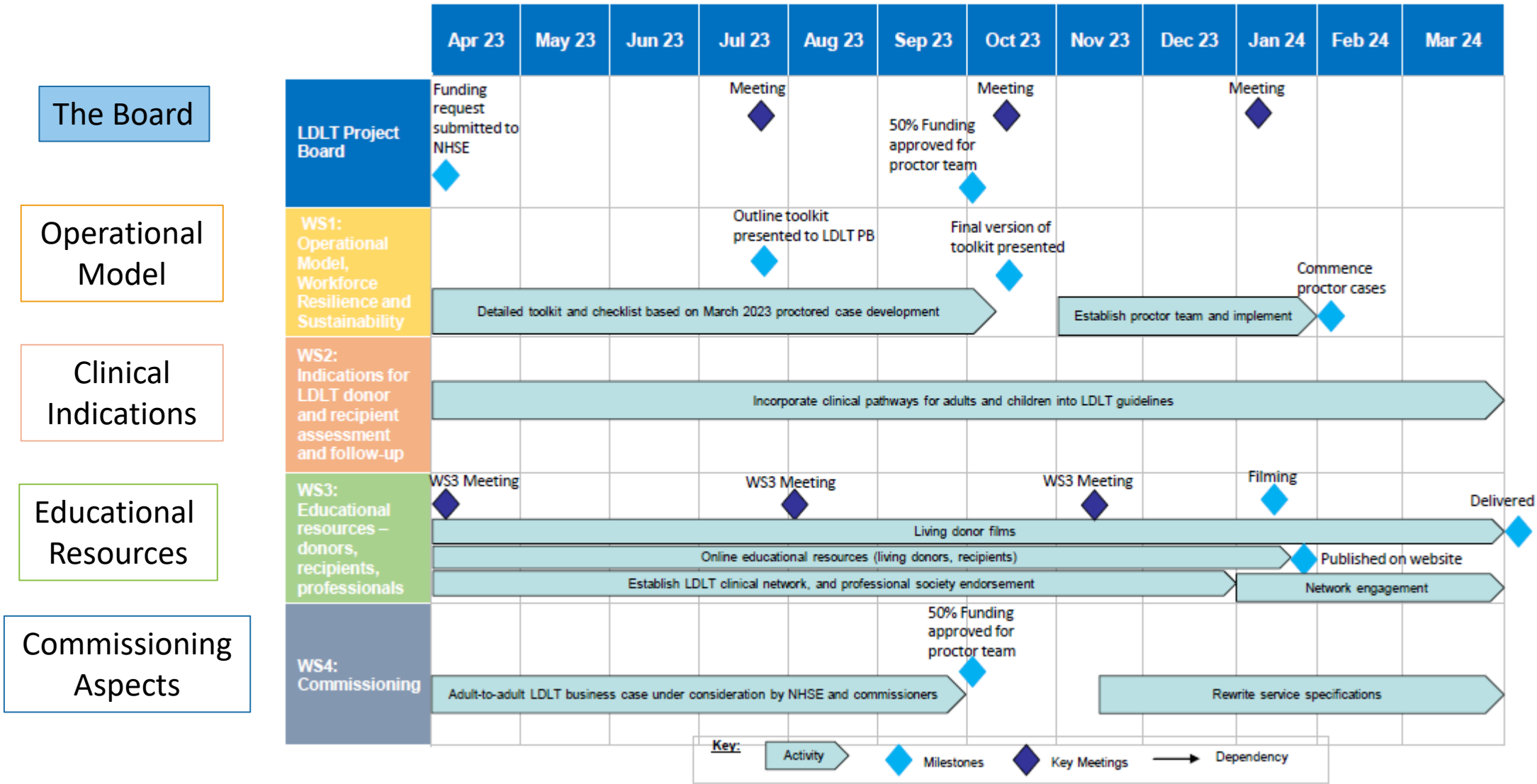
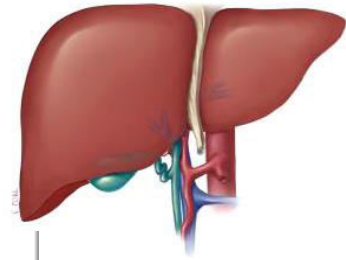
Operational Model

Clinical Indications

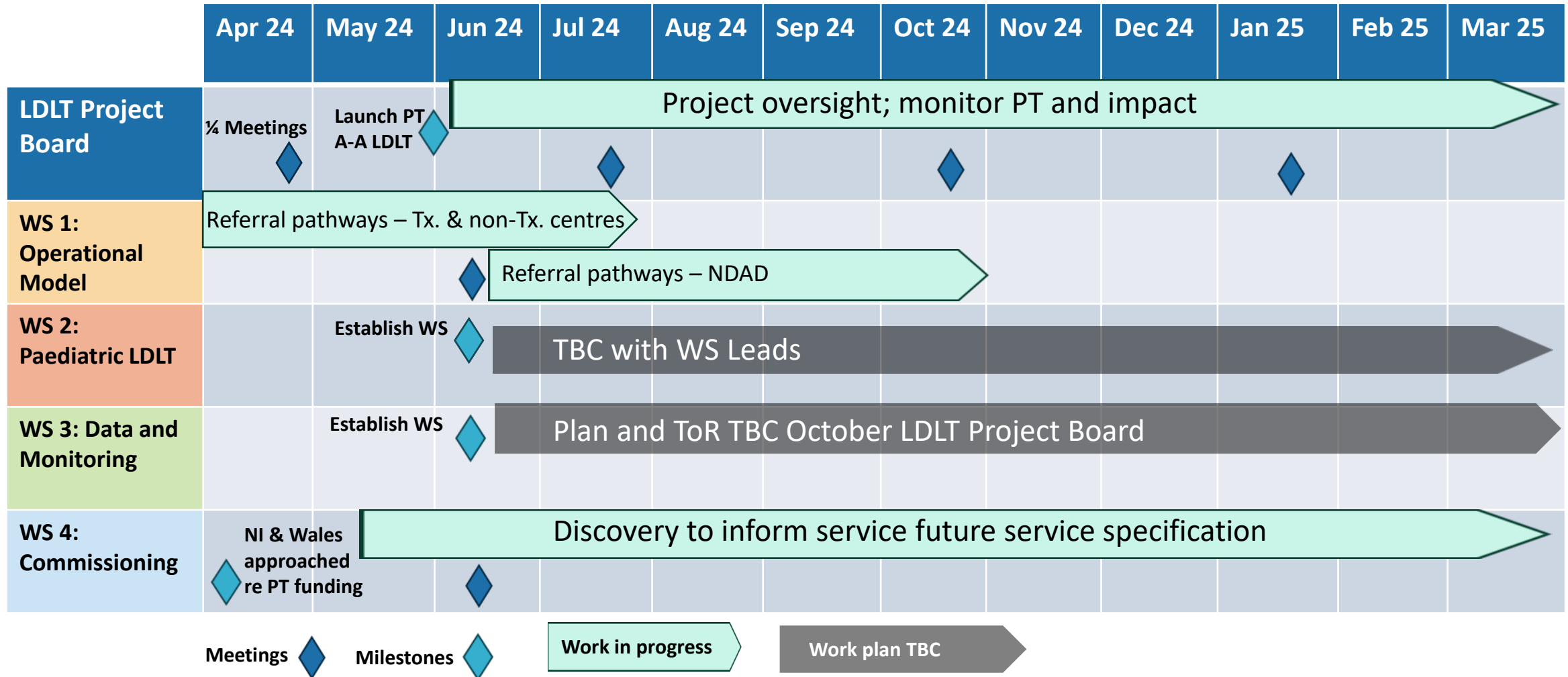
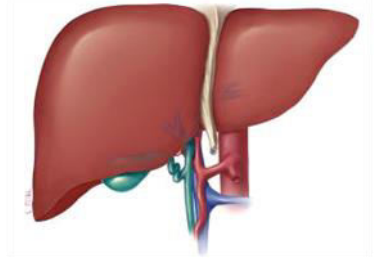
Educational Resources

Commissioning Aspects

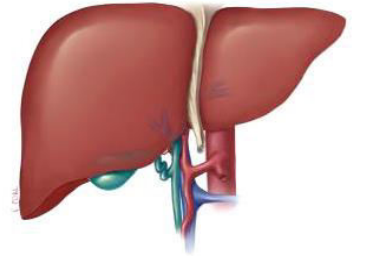
2023/2024- Adult-to Adult LDLT



2024/25- The Next Era



Critical to Success



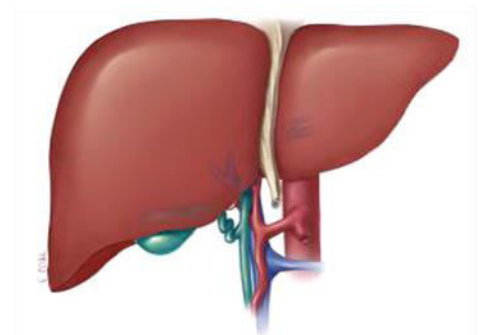
Engagement from clinical teams and key stakeholders

Engagement Event- February 2023

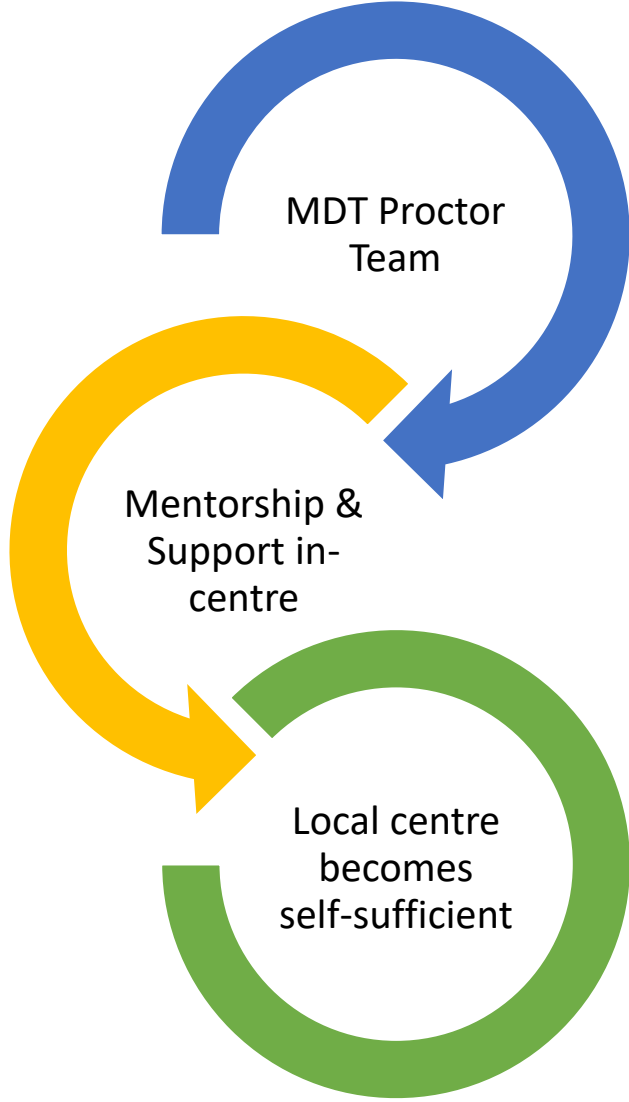
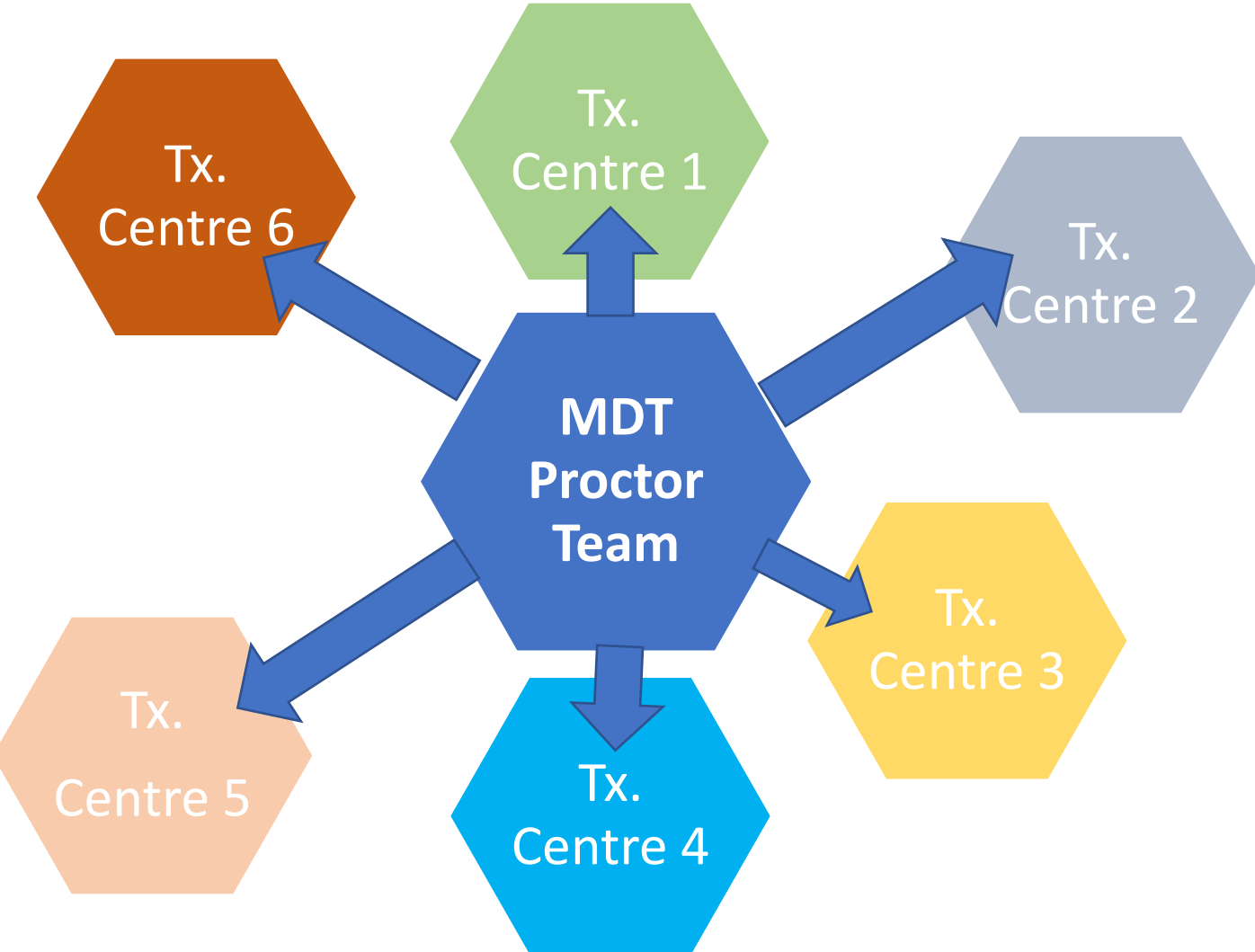


1. Is this the right model? **Yes**
2. Is this the right time? **Yes**
3. Will this improve equity of access to LDLT? **Yes**
4. Will this help meet the shortfall in donor numbers? **Yes**
5. Will it support or detract from the overall LT programme? **No**
6. Is this feasible in your local team? **Yes**
7. Is there appetite to do this in your local team? **Yes**
8. Should the minimal listing criteria be the same for DD and LD? **Yes**

Agreed Operational Model Adult-to-Adult LDLT



Proctoring Scheme



MDT Proctor Team

WHO?

- Senior donor surgeon
- Senior recipient surgeon
- Donor advocate physician
- Living donor coordinator
- Consultant radiologist
- **Consultant anaesthetist**
- Alternates for flexibility

WHAT?

- Oversight for donor and recipient clinical pathways
- Mentor donor and recipient surgery
- Share best practice/transfer knowledge and expertise to create local Tx. Centre self-sufficiency
- Has 'go/no go' responsibility

MDT Proctor Team

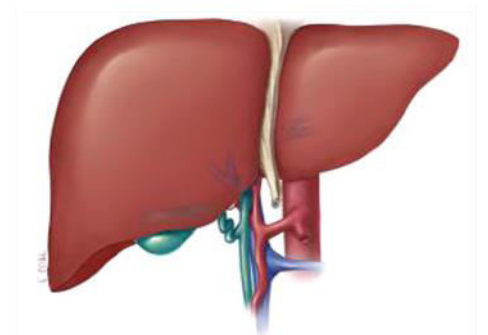
HOW?

- Work to standard protocols (WS2)
- Work with centres who want to engage to identify and meet their needs
- Perform surgery in-centre with local surgeons

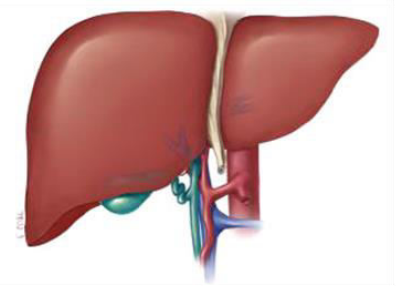
CONSIDERATIONS

- **Expected engagement** from all centres
- **Staffing and remuneration** for proctor team and back fill
- **Timeframes for delivery** in all centres that wish to engage and have the infrastructure
- **Clinical Governance**
Monitoring outcomes and experience i.e.; donors, recipients, clinical teams, proctoring team)

Indications and Clinical Pathways for Adult-to-Adult LDLT



Clinical Recommendations



- **Donor selection**

- Increase donor age for consideration- up to 60 years, case-by-case
- Right lobe for non-directed altruistic donors
- Exclude extended criteria donors (e.g.; size of graft GRWR<0.8, BMI > 30, anatomical complexity)
- Access to radiology is key; volumetry has a learning curve

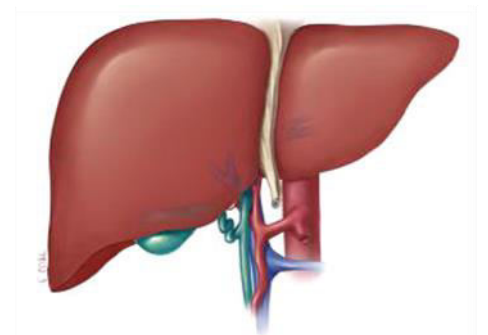
- **Recipient selection**

- Start with chronic liver disease (CLD)
- Include new cancer indications (but clear that they are service evaluations) and re-transplantation
- Exclude acute liver failure and acute on chronic liver failure (ACLF) initially

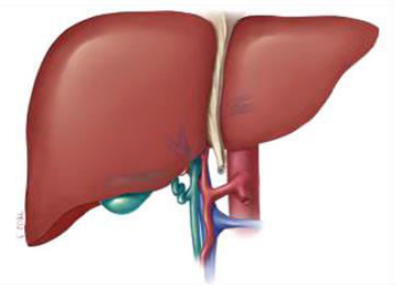
- **Education**

- Patients and families informed that the A-A LDLT programme is essential to bridge the gap between supply and demand

Supporting Actions

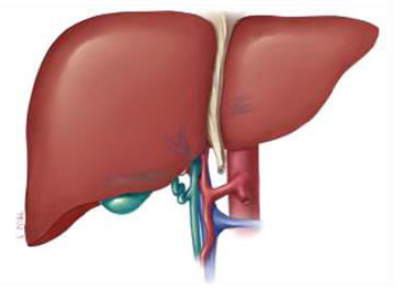


Supporting Actions in Progress



- **Commissioning**
 - Service specifications - centre requirements (capacity and capability); clinical pathways
- **Clinical Best Practice**
 - Update UK BTS/BASL Guidelines for LDLT
 - Direct access image sharing for all participating centres
 - Establish UK LDLT Network; local MDT champions/leads
 - UK MDT
 - UK LDLT Registry data capture
- **Education**
 - Resources for donors, recipients and healthcare professionals
 - Inaugural UK LDLT Network meeting, 21st May 2024, Leeds

On-Line Resources



- **Healthcare Professionals**

- UK LKD Network <https://www.odt.nhs.uk/living-donation/uk-living-donor-liver-transplantation-network/>
- LDLT Project and Proctor Team <https://www.odt.nhs.uk/living-donation/living-donor-liver-transplantation/>

- **Living Donors and Recipients – updates in progress**

- <https://www.organdonation.nhs.uk/become-a-living-donor/donating-part-of-your-liver/>
- <https://www.nhsbt.nhs.uk/organ-transplantation/liver/>

Acknowledgements

- Project Board and workstream leads
- Working group members
- Liver Advisory Group
- Professional societies
- Patient organisations
 - British Liver Trust; LiverNorth; UK Liver Patient Alliance
- NHSBT Clinical, Commissioning and Hub Ops.
- NHS England and UK Commissioners

