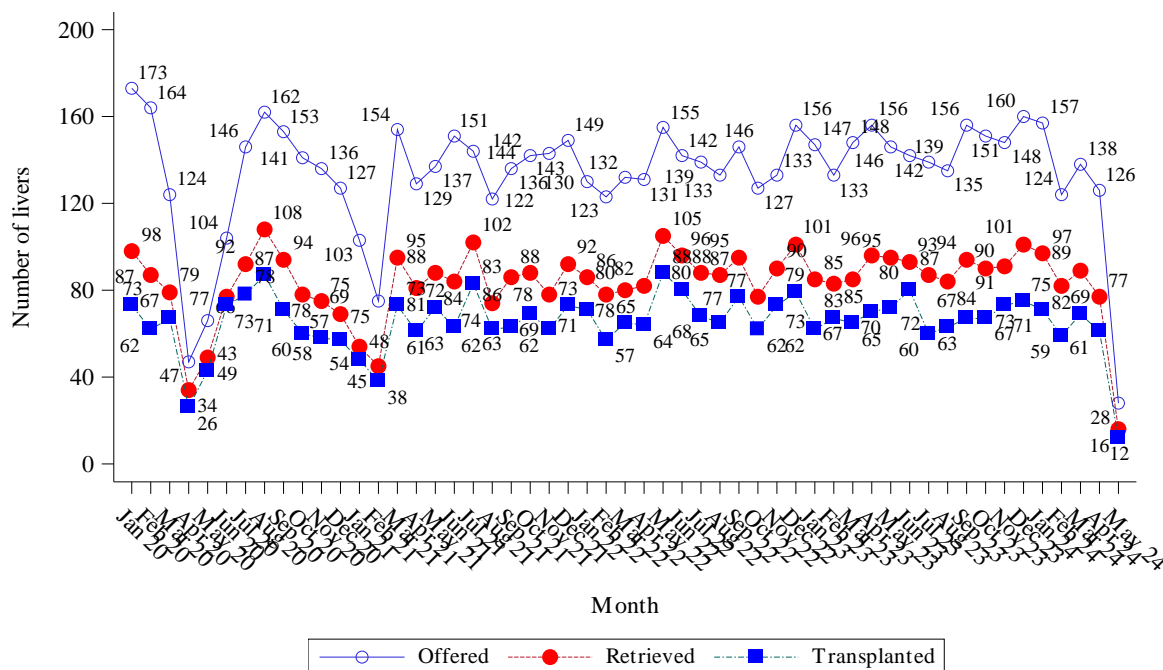


# NHS BLOOD & TRANSPLANT

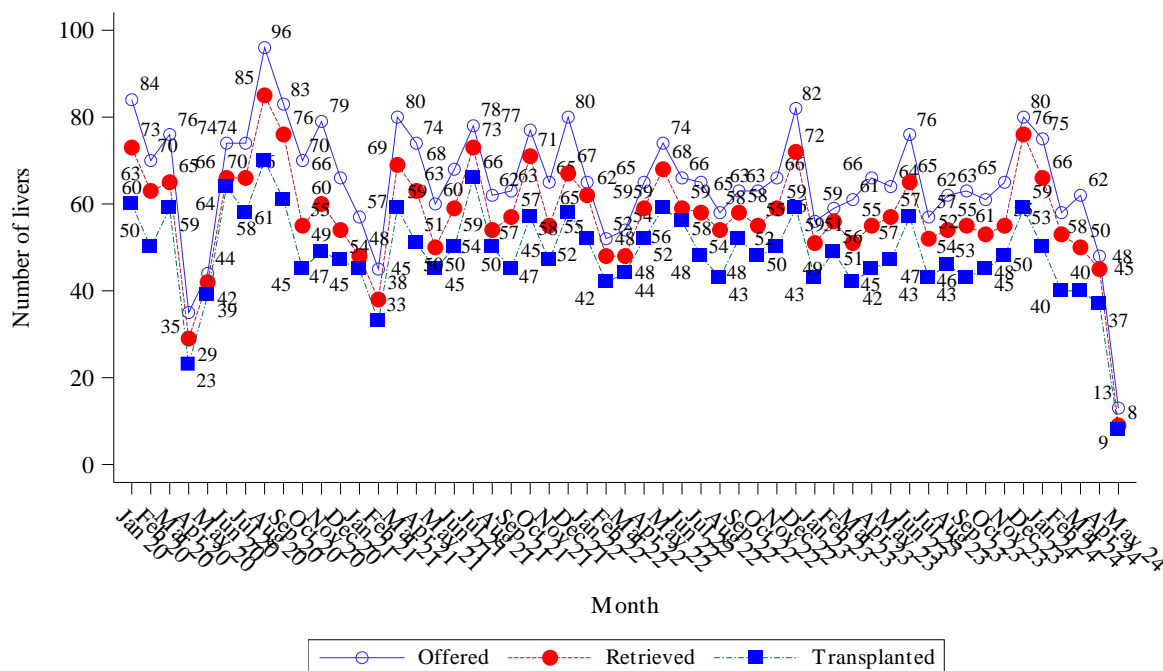
## Liver Monthly Utilisation Report, 1 January 2020 to 6 May 2024

This report examines the offering outcome of livers offered for transplantation from UK deceased donors between 1 January 2020 and 6 May 2024 as recorded on the UK Transplant Registry on 7 May 2024.

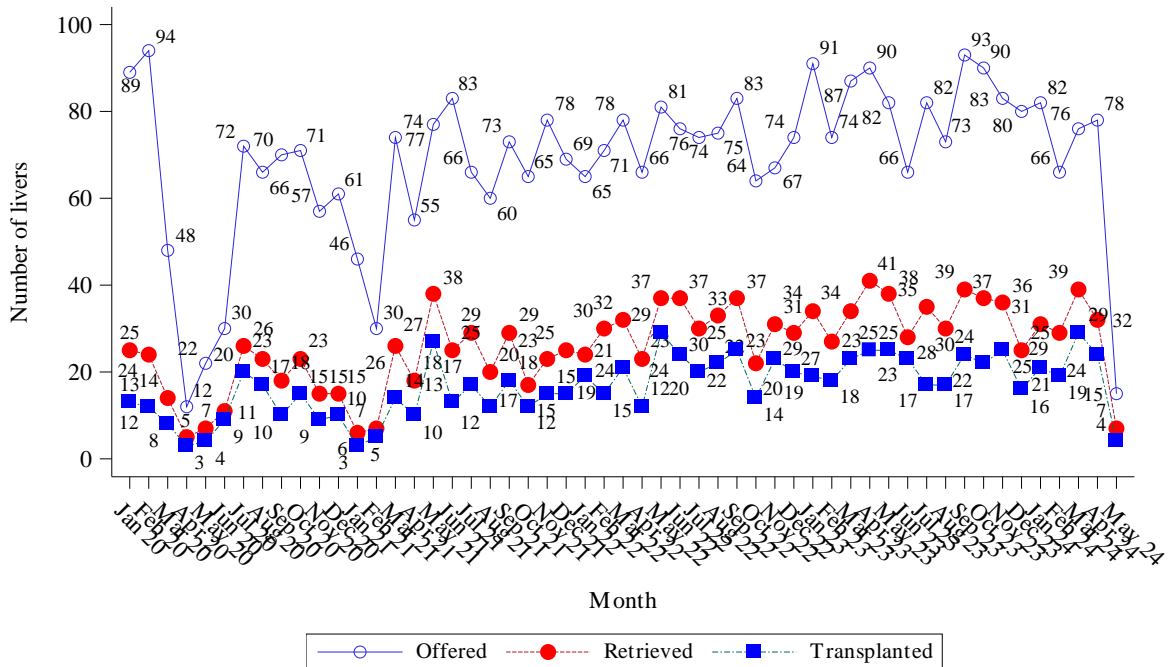
**Figure 1** Number of livers from UK deceased donors offered, retrieved and transplanted, 1 January 2020 to 6 May 2024



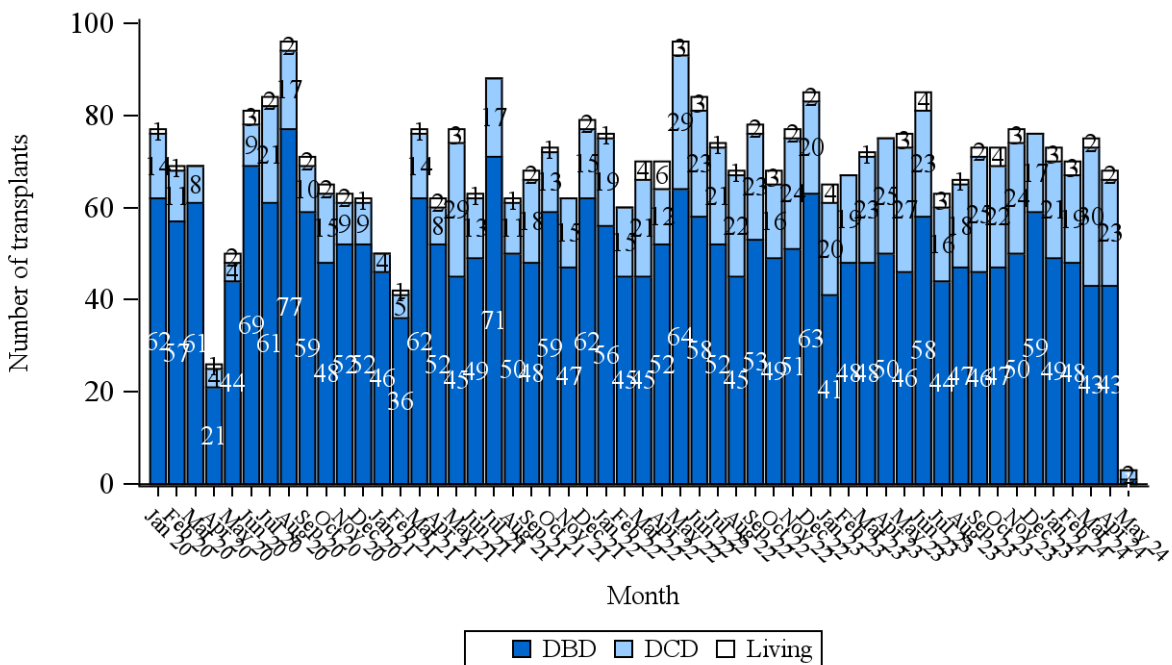
**Figure 2A** Number of livers from UK DBD donors offered, retrieved and transplanted, 1 January 2020 to 6 May 2024



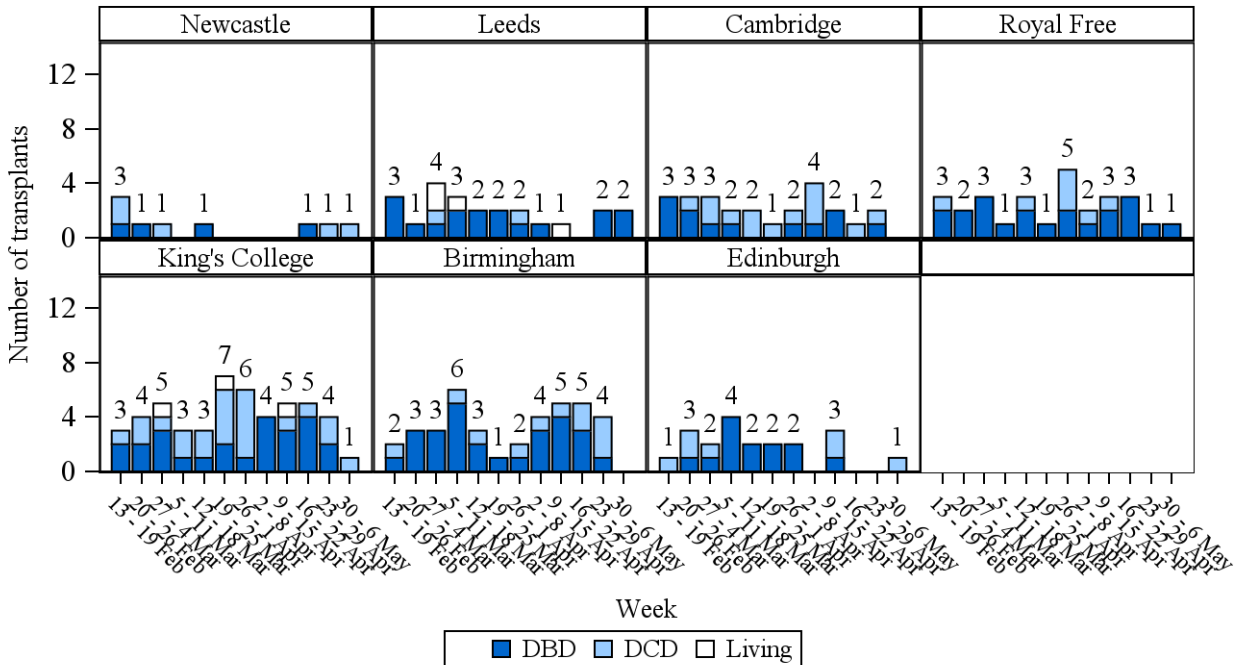
**Figure 2B** Number of livers from UK DCD donors offered, retrieved and transplanted, 1 January 2020 to 6 May 2024



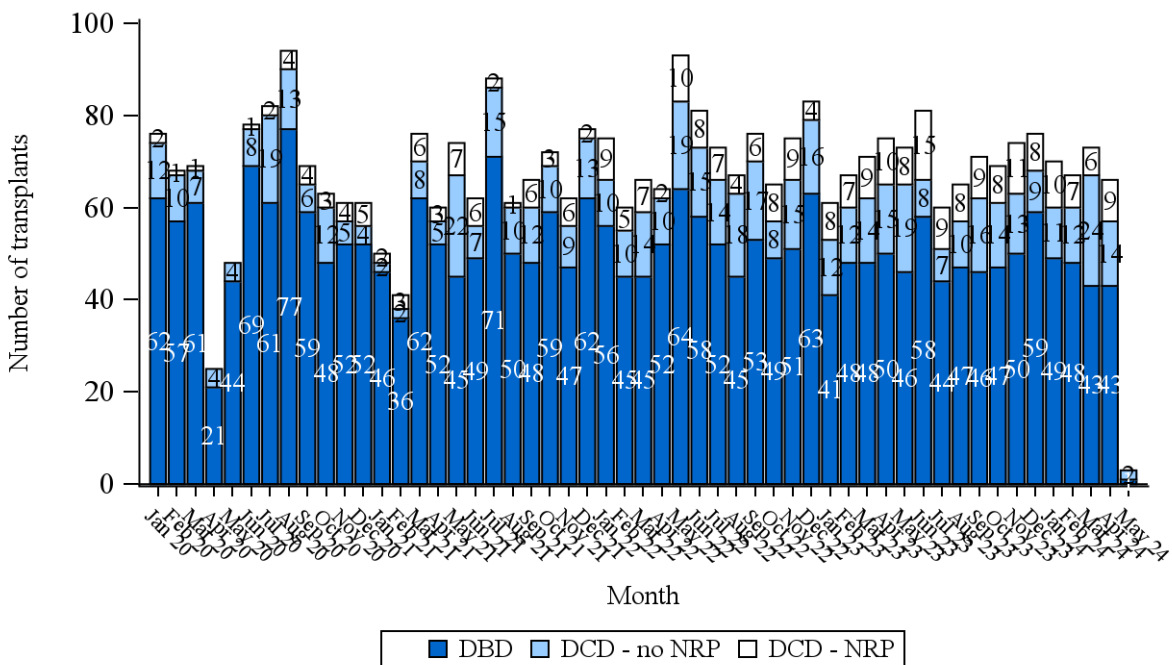
**Figure 3** Number of liver transplants performed in the UK, by donor type, 1 January 2020 to 6 May 2024



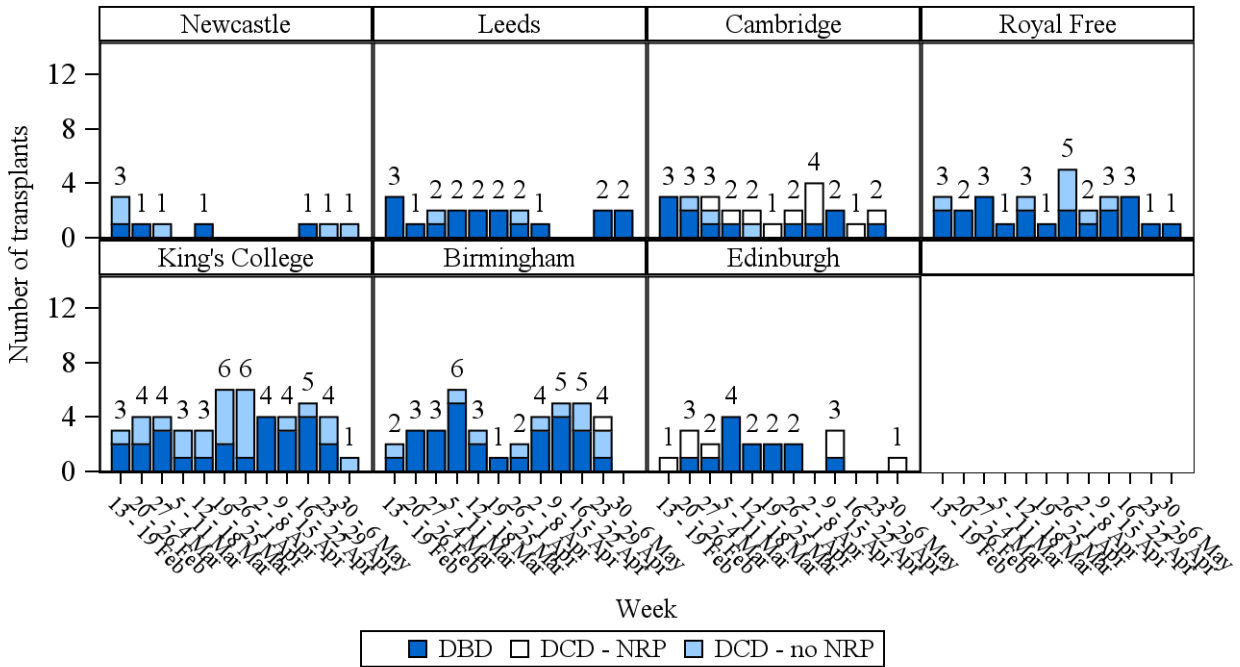
**Figure 4A** Number of liver transplants performed in the UK, by transplant centre and donor type, 13 February 2024 to 6 May 2024



**Figure 5** Number of deceased donor liver transplants performed in the UK, by NRP, 1 January 2020 to 6 May 2024

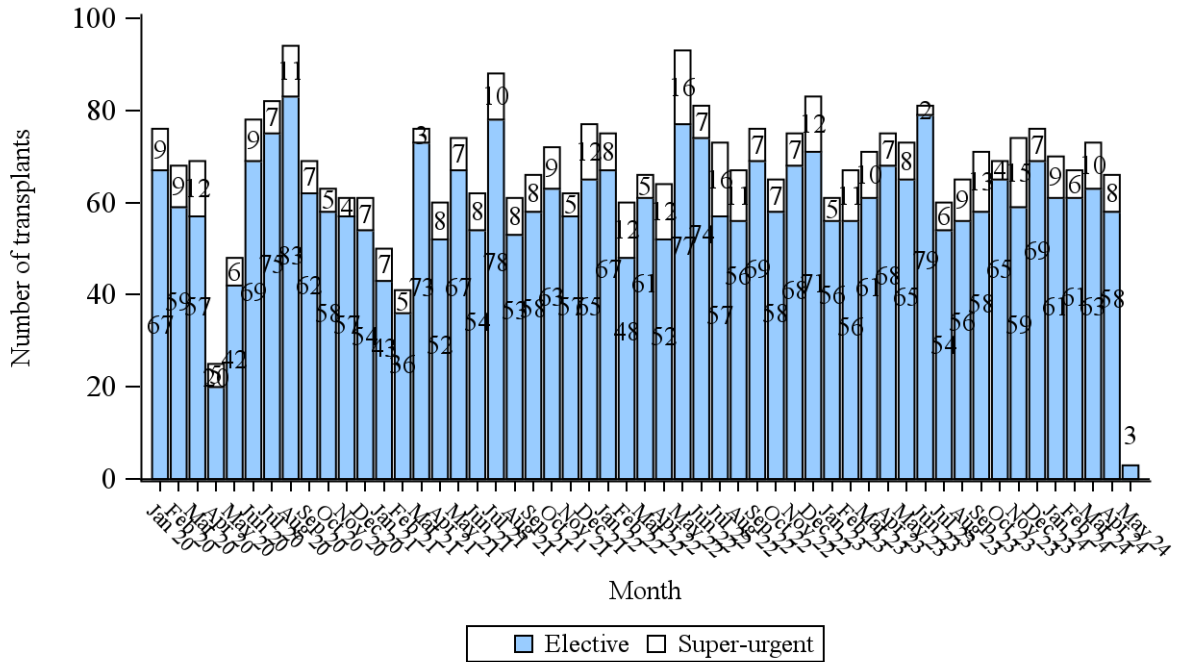


**Figure 6A** Number of deceased donor liver transplants performed in the UK, by transplant centre and NRP, 13 February 2024 to 6 May 2024

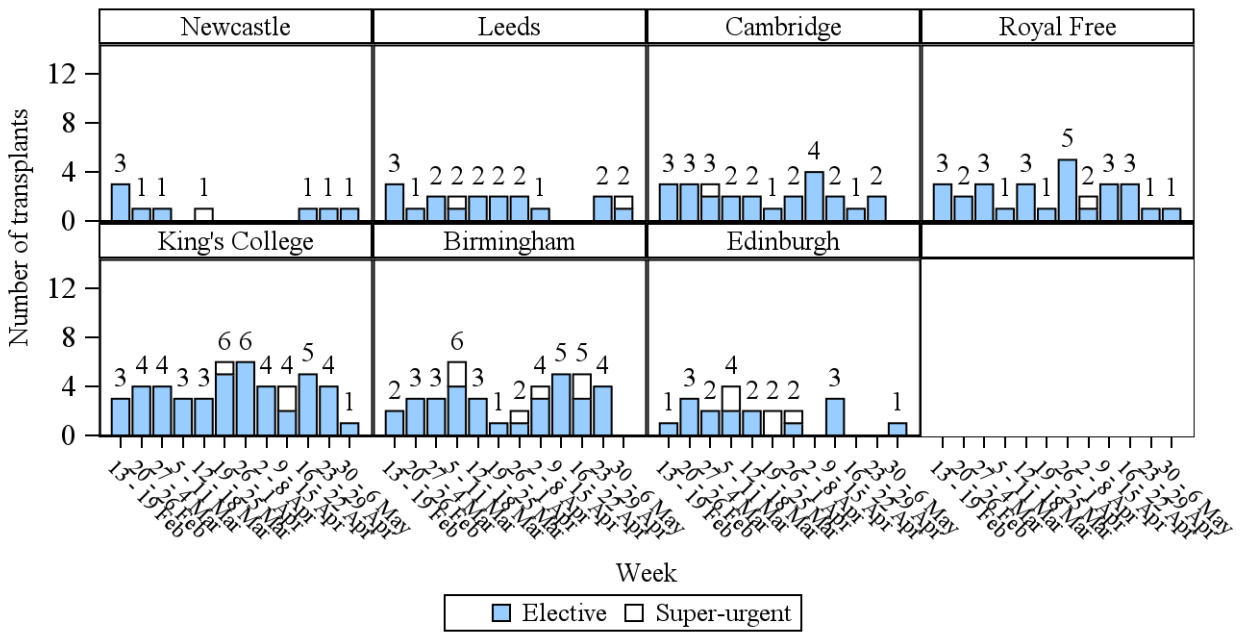


Note that NRP data is as reported as at 8 May 2024.

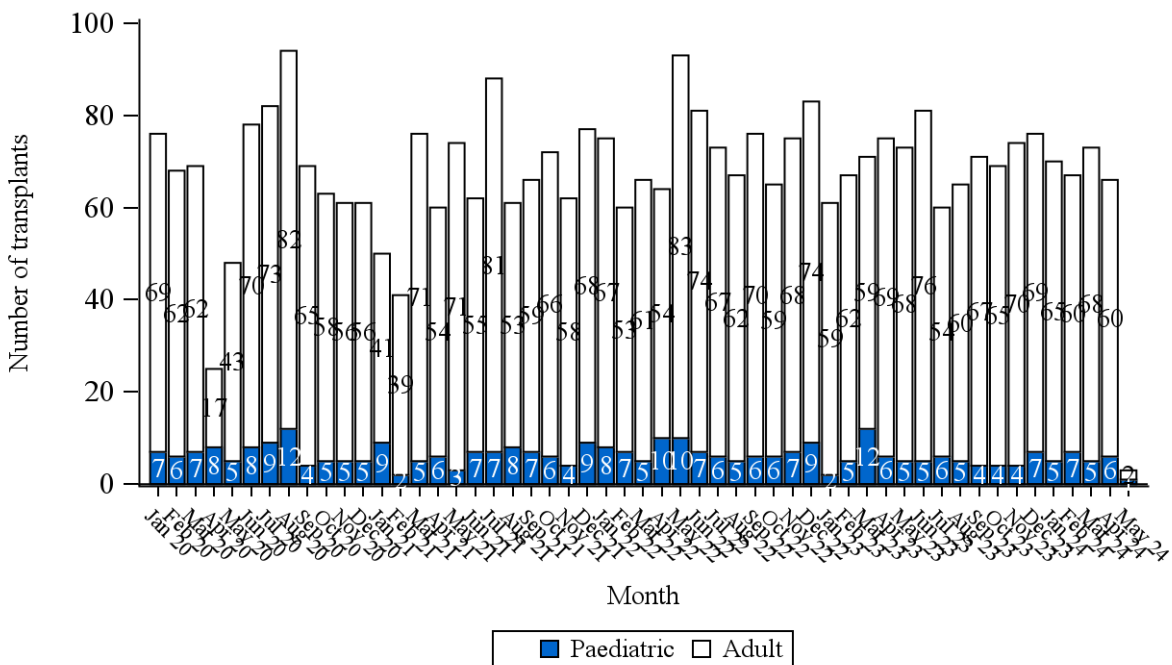
**Figure 7** Number of deceased donor liver transplants performed in the UK, by urgency status, 1 January 2020 to 6 May 2024



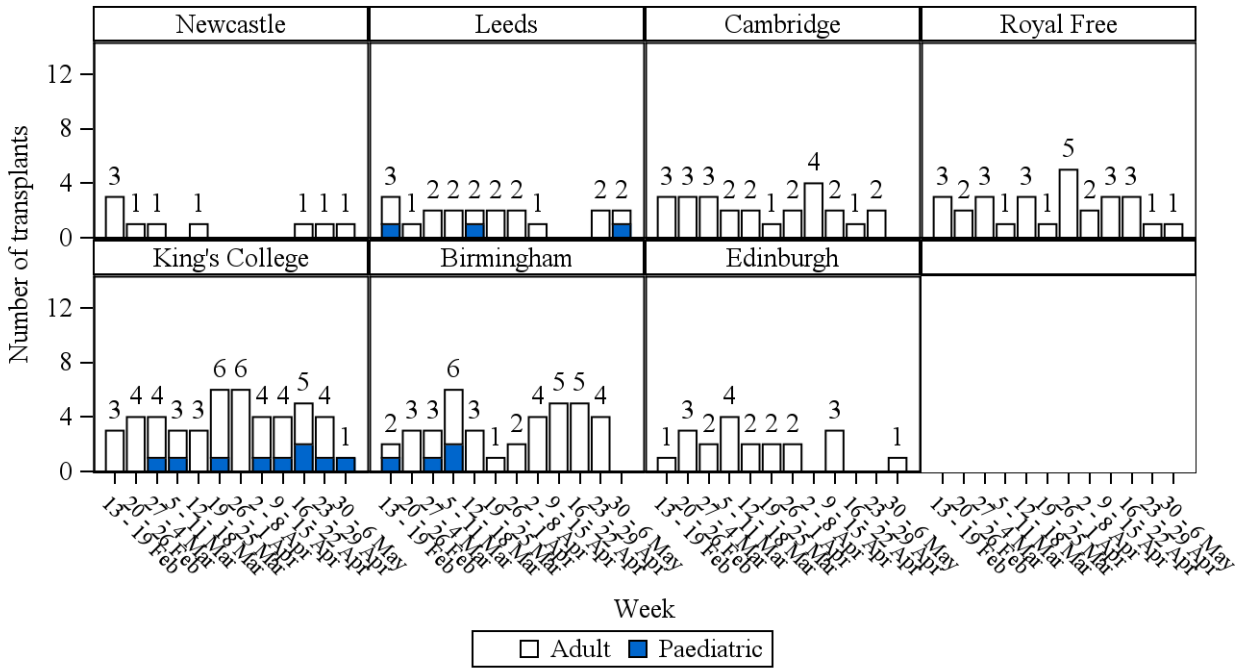
**Figure 8A** Number of deceased donor liver transplants performed in the UK, by transplant centre and urgency status, 13 February 2024 to 6 May 2024



**Figure 9** Number of deceased donor liver transplants performed in the UK, by age group, 1 January 2020 to 6 May 2024



**Figure 10** Number of deceased donor liver transplants performed in the UK, by transplant centre and age group, 13 February 2024 to 6 May 2024



**Table 1A Reasons DBD named patient liver offers were declined for livers transplanted, by centre**

Reason	Transplant centre							Total
	N	L	C	RF	KC	B	E	
Organ not present	0	0	1	0	1	0	0	2
Donor unsuitable - age	0	1	0	0	0	0	0	1
Donor unsuitable - past history	0	2	2	0	1	2	1	8
Donor unsuitable - size	0	0	0	0	0	1	0	1
Centre already transplanting	0	0	1	0	1	0	0	2
Ischaemia time too long - cold	0	1	0	0	0	0	1	2
Recipient unfit	0	0	0	0	1	2	0	3
Recipient unavailable	0	0	0	0	1	0	0	1
Recipient refused	0	0	0	0	3	0	0	3
Recipient did not need transplant	0	0	1	2	0	1	1	5
Steatosis (Fatty organ) - organ unsuitable	0	1	0	0	1	0	0	2
Age mismatch	0	1	0	0	0	0	0	1
Split liver not suitable for recipient	0	2	1	1	0	1	2	7
Donor already accepted for this recipient	0	1	1	1	0	0	0	3
Other, please specify - logistic issues	0	0	0	0	0	1	0	1
Other, please specify - organ unsuitable	0	0	0	0	0	0	1	1
Other - organ unsuitable for named recipient	0	0	1	0	0	0	0	1
Other - recipient unsuitable	0	0	0	0	1	0	0	1
<b>TOTAL</b>	<b>0</b>	<b>9</b>	<b>8</b>	<b>4</b>	<b>10</b>	<b>8</b>	<b>6</b>	<b>45</b>

**Table 1B Reasons DBD fast-track liver offers were declined for livers transplanted, by centre**

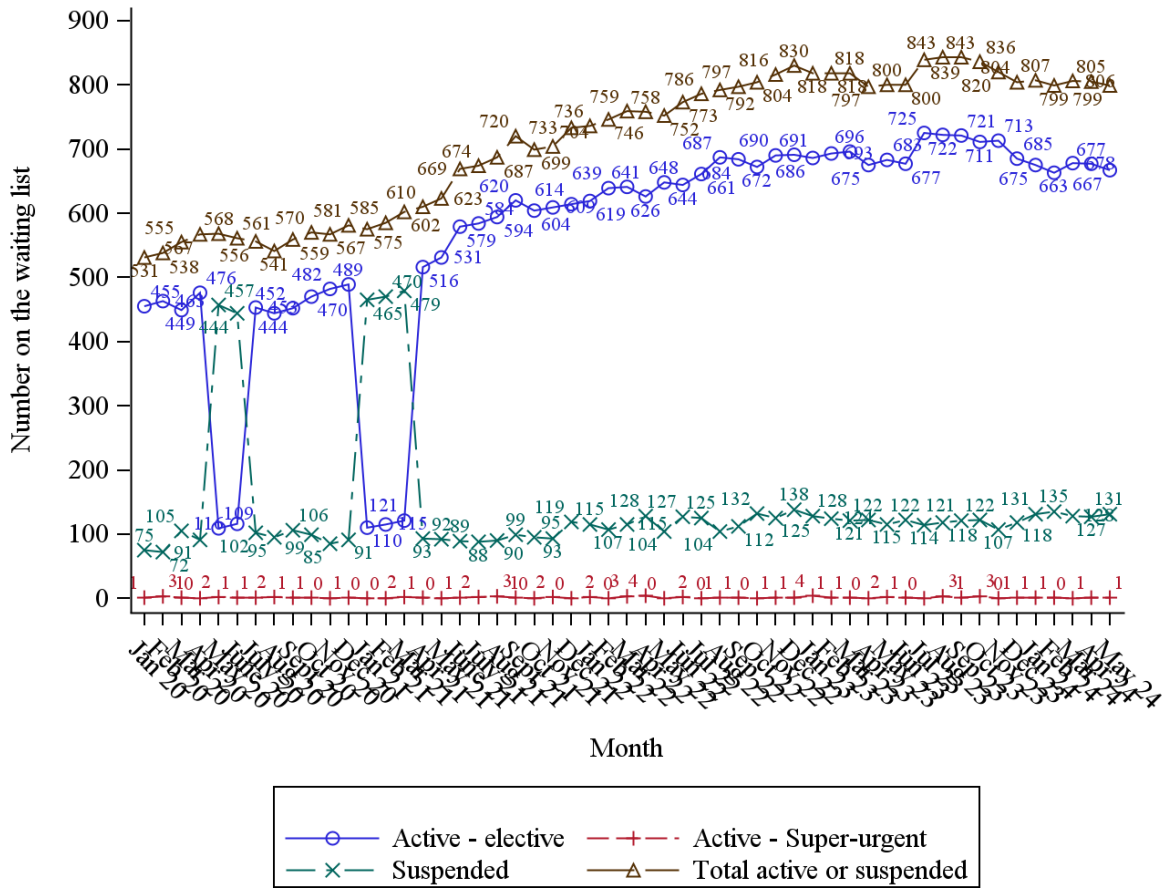
Reason	Transplant centre							Total
	N	L	C	RF	KC	B	E	
Donor unsuitable - past history	1	0	0	0	0	0	1	2
Donor unsuitable - size	0	0	0	0	0	0	1	1
No suitable recipients	2	1	2	0	0	0	1	6
Centre already transplanting	0	1	0	0	1	0	0	2
Ischaemia time too long - cold	1	1	0	0	0	0	3	5
No response to fast track/group offer	6	2	4	2	1	0	0	15
Steatosis (Fatty organ) - organ unsuitable	0	1	0	0	1	0	2	4
Whole organ cut down for transplant	0	0	0	1	0	0	0	1
Split liver not suitable for recipient	0	0	0	0	0	0	1	1
Other, please specify - organ unsuitable	0	1	0	0	0	2	0	3
<b>TOTAL</b>	<b>10</b>	<b>7</b>	<b>6</b>	<b>3</b>	<b>3</b>	<b>2</b>	<b>9</b>	<b>40</b>

**Table 1C Reasons DCD liver offers were declined for livers transplanted, by centre**

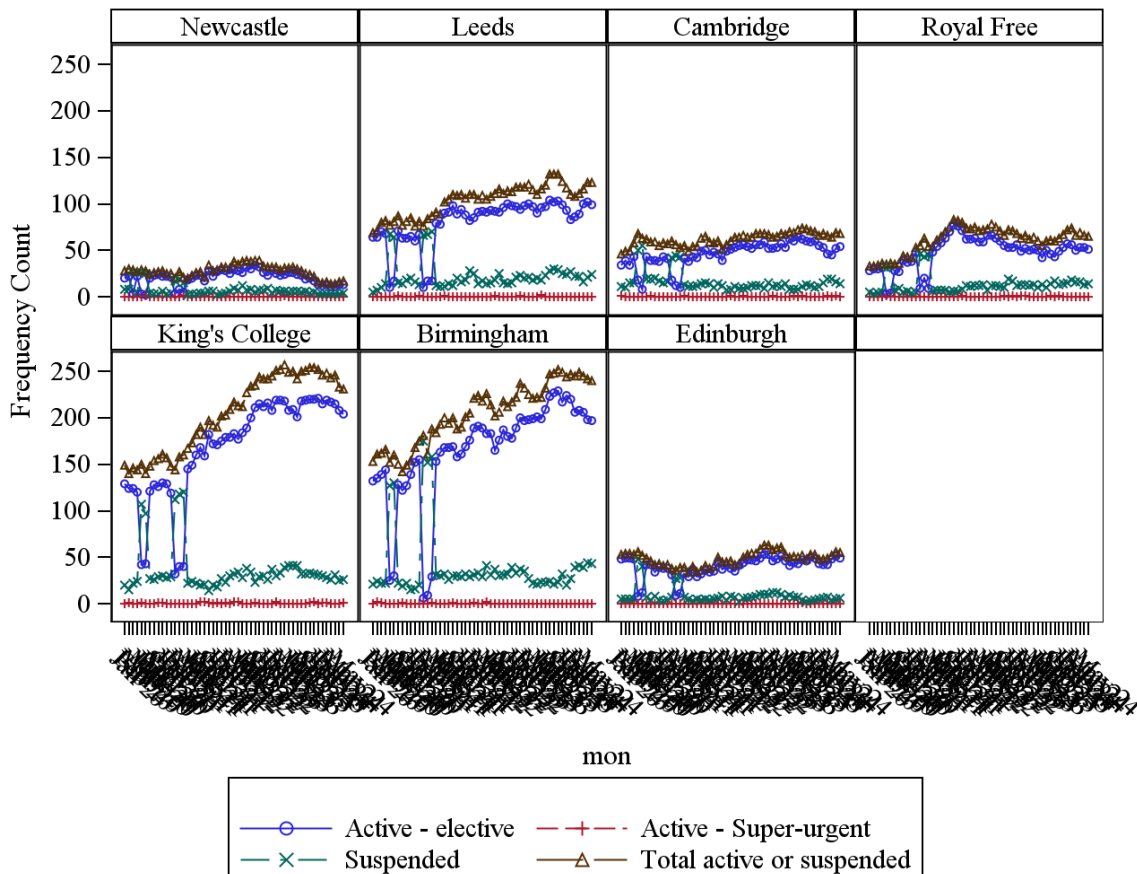
Reason	Transplant centre							Total
	N	L	C	RF	KC	B	E	
Donor unsuitable - past history	0	1	0	0	0	1	0	2
No suitable recipients	1	0	0	1	0	0	0	2
Centre already transplanting	0	1	0	0	0	0	0	1
No response to fast track/group offer	1	1	0	0	0	0	0	2
Poor function - initial assessment	0	0	0	0	1	0	0	1
ABO mismatch	0	0	0	0	0	0	1	1
<b>TOTAL</b>	<b>2</b>	<b>3</b>	<b>0</b>	<b>1</b>	<b>1</b>	<b>1</b>	<b>1</b>	<b>9</b>



**Figure 11** Number of patients on the liver transplant list at the end of each month, January 2020 - 7 May 2024

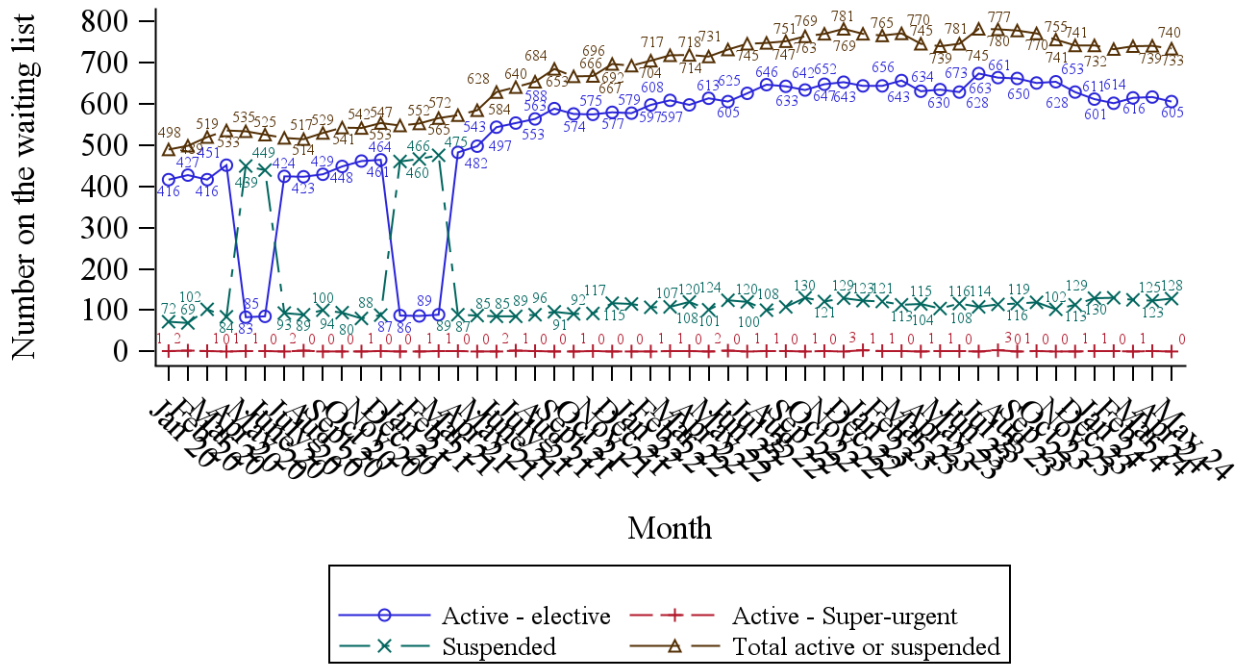


**Figure 12** Number of patients on the liver transplant list at the end of each month, by centre, January 2020 - 7 May 2024

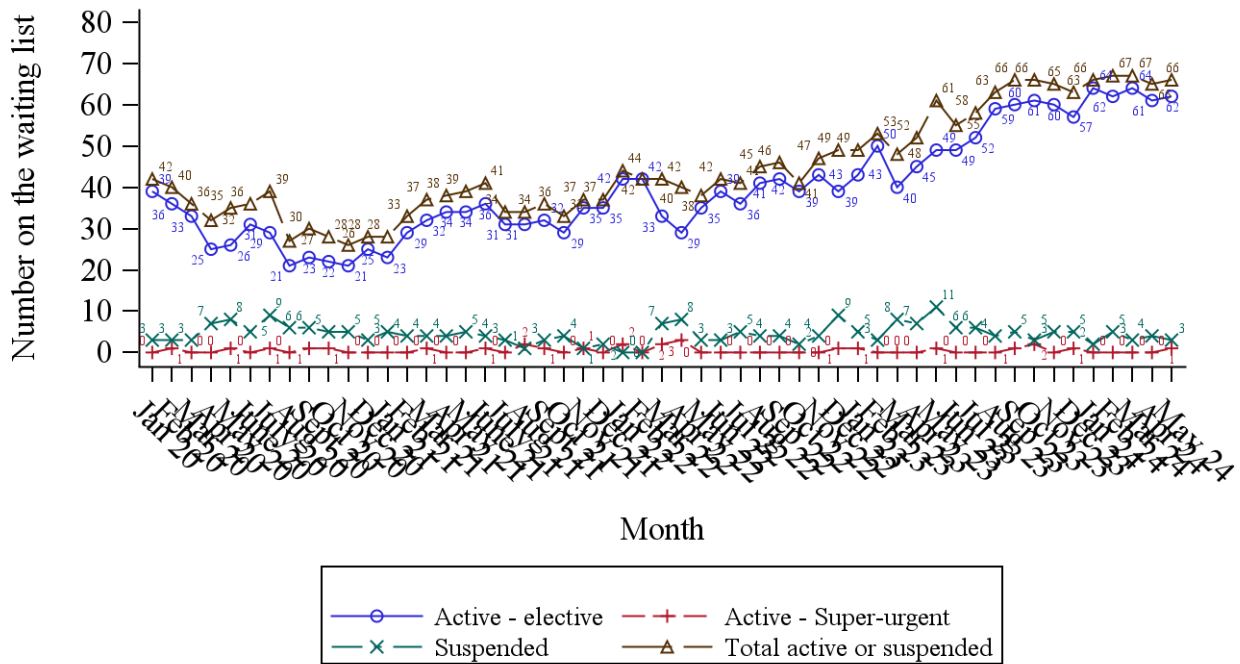




**Figure 13** Number of adult patients on the liver transplant list at the end of each month, January 2020 - 7 May 2024



**Figure 14** Number of paediatric patients on the liver transplant list at the end of each month, January 2020 - 7 May 2024



667 patients active on the UK elective liver list on 7 May 2024:

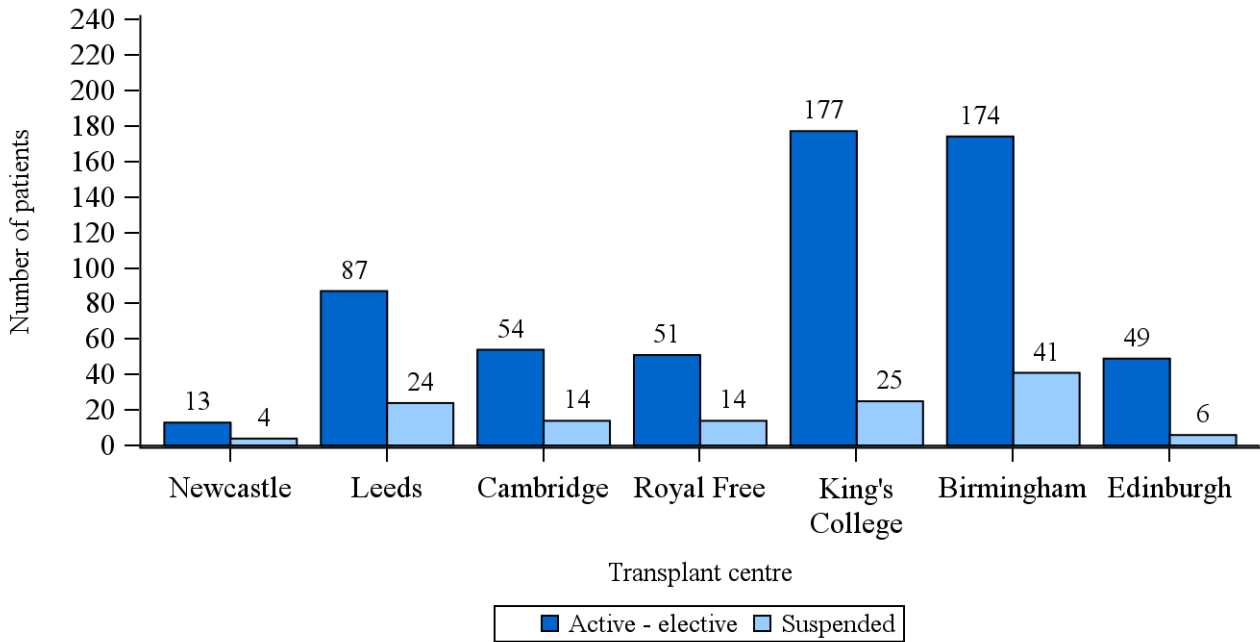
- 605 adult
- 62 paediatric

One paediatric blood group O patient at King's College is currently active on the super-urgent list as at 7 May 2024.

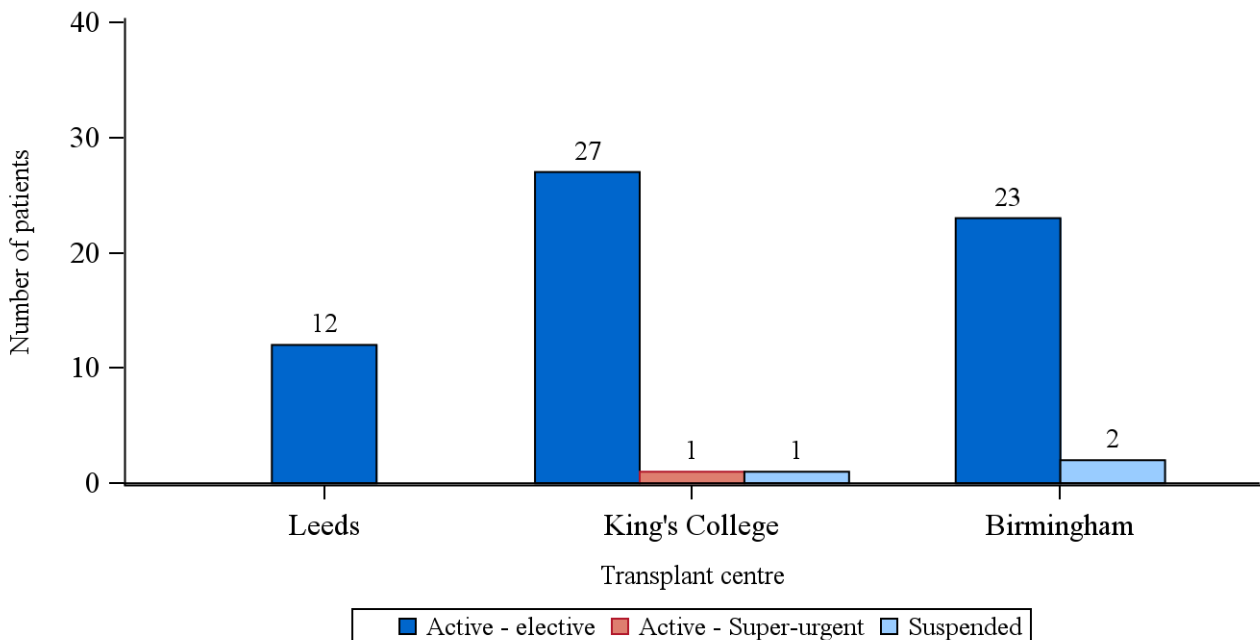
Additional 13 patients currently active on intestinal list and 10 suspended

- 10 also require a liver (8 active and 2 suspended)

**Figure 15** Total number of adult patients on the elective UK liver transplant list on 7 May 2024, by registration status



**Figure 16** Total number of paediatric patients on the elective UK liver transplant list on 7 May 2024, by registration status



**Table 2 Reason given for recipient suspensions by transplant centre as at 7 May 2024**

Status reason	Transplant centre							Total
	N	L	C	RF	KC	B	E	
Condition improved	0	3	4	1	6	6	1	21
Condition deteriorated/patient unfit/medical contra-indication	3	17	4	1	9	24	3	61
Medical investigations	0	0	4	4	5	4	1	18
Patient/parent request	0	2	2	4	5	6	0	19
Patient/non-compliant	0	1	0	2	0	1	1	5
Patient temporarily unavailable for transplant for non-medical reasons	1	0	0	0	1	0	0	2
Other (please specify)	0	1	0	2	0	2	0	5
<b>TOTAL</b>	<b>4</b>	<b>24</b>	<b>14</b>	<b>14</b>	<b>26</b>	<b>43</b>	<b>6</b>	<b>131</b>

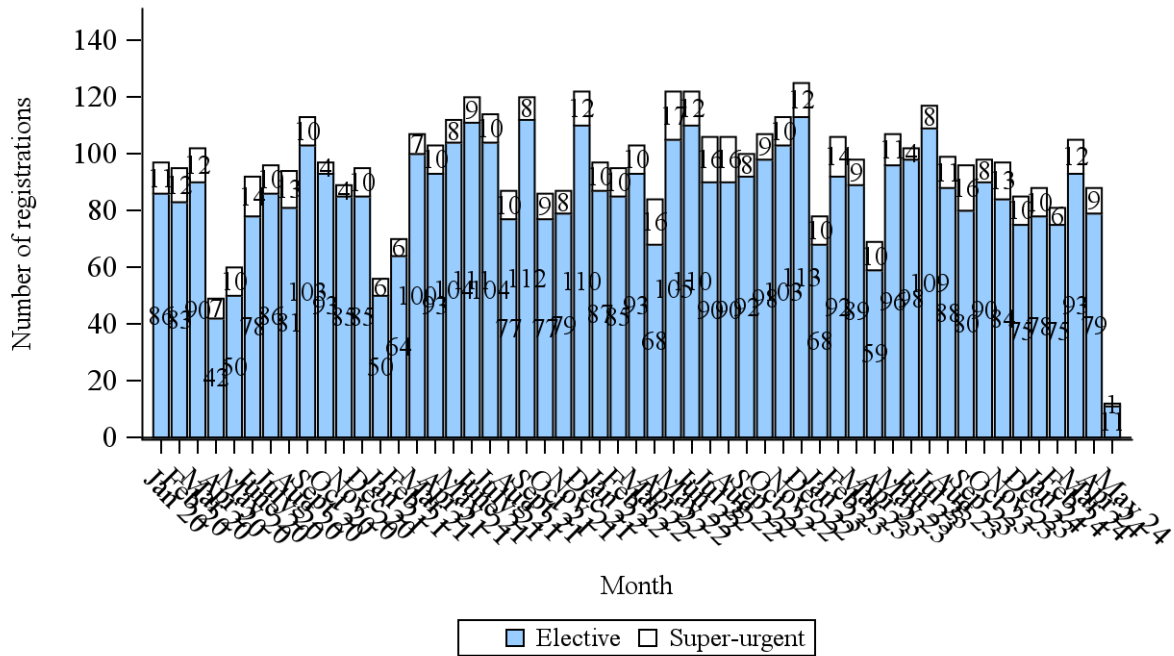
**Table 2A Time suspended by reason suspended for patients suspended as at 7 May 2024**

Status reason							N (%) suspended for >6 months
	N	%	Median	IQR	Min	Max	
Condition improved	21	16	140	90-263	0	2241	8 (38)
Condition deteriorated/patient unfit/medical contra-indication	61	47	41	19-111	0	893	7 (11)
Medical investigations	18	14	64	40-116	3	469	3 (17)
Patient/parent request	19	15	18	6-119	0	518	3 (16)
Patient/non-compliant	5	4	162	46-172	20	358	1 (20)
Patient temporarily unavailable for transplant for non-medical reasons	2	2	97.5	0-195	0	195	1 (50)
Other (please specify)	5	4	203	32-242	6	334	3 (60)
<b>TOTAL</b>	<b>131</b>	<b>100</b>	<b>64</b>	<b>20-140</b>	<b>0</b>	<b>2241</b>	<b>26 (20)</b>

**Table 2B Time suspended by transplant centre for patients suspended as at 7 May 2024**

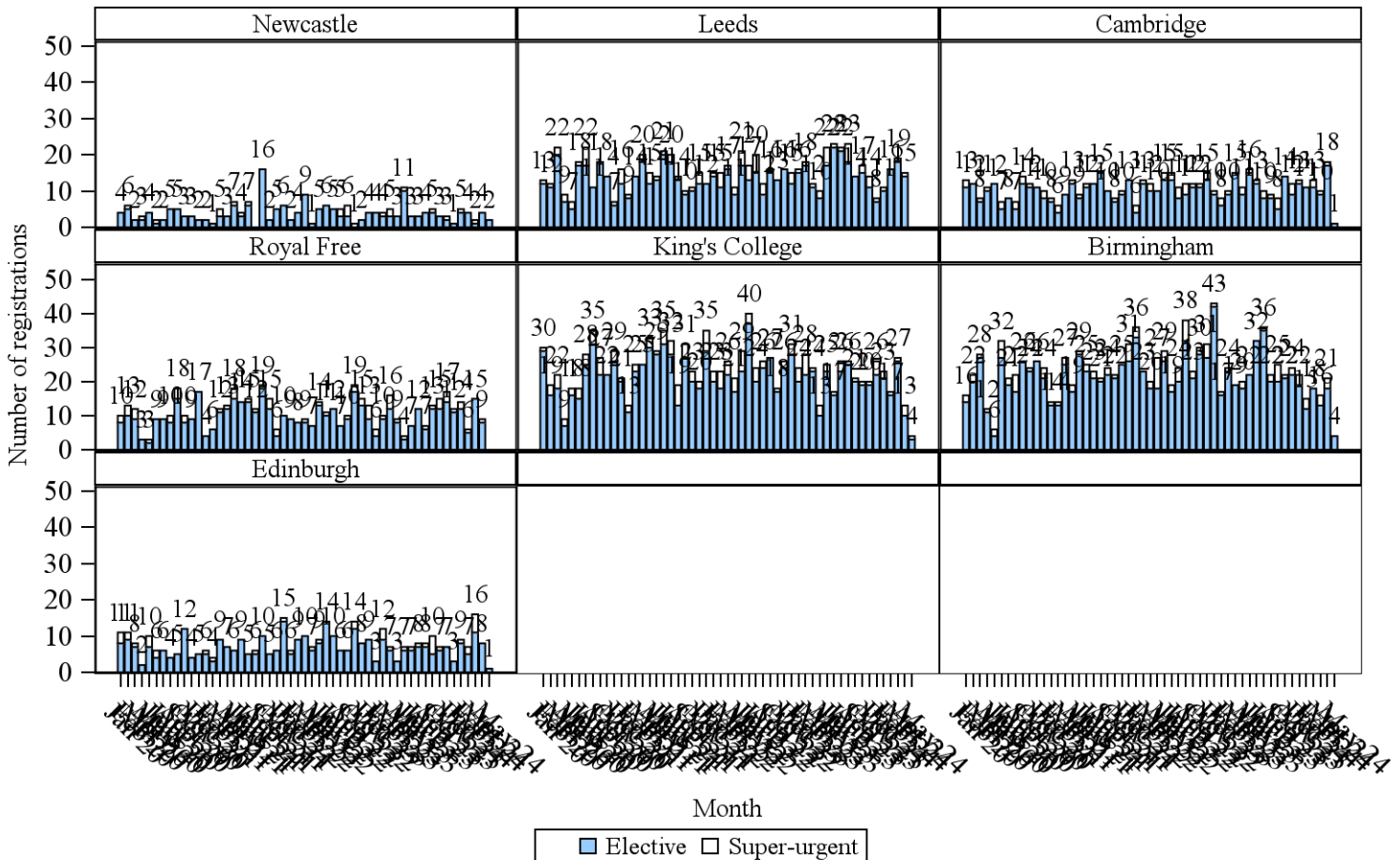
Centre							N (%) suspended for >6 months
	N	%	Median	IQR	Min	Max	
Newcastle	4	3	56.5	21.5-96.5	0	123	0 (0)
Leeds	24	18	55.5	21-151	0	358	4 (17)
Cambridge	14	11	86.5	28-119	7	299	3 (21)
Royal Free	14	11	78	11-172	0	298	3 (21)
King's College	26	20	43	18-263	0	2241	8 (31)
Birmingham	43	33	69	21-113	0	469	7 (16)
Edinburgh	6	5	65.5	11-172	3	321	1 (17)
<b>TOTAL</b>	<b>131</b>	<b>100</b>	<b>64</b>	<b>20-140</b>	<b>0</b>	<b>2241</b>	<b>26 (20)</b>

**Figure 17** Number of new registrations onto the UK liver transplant list, by urgency status, 1 January 2020 to 7 May 2024

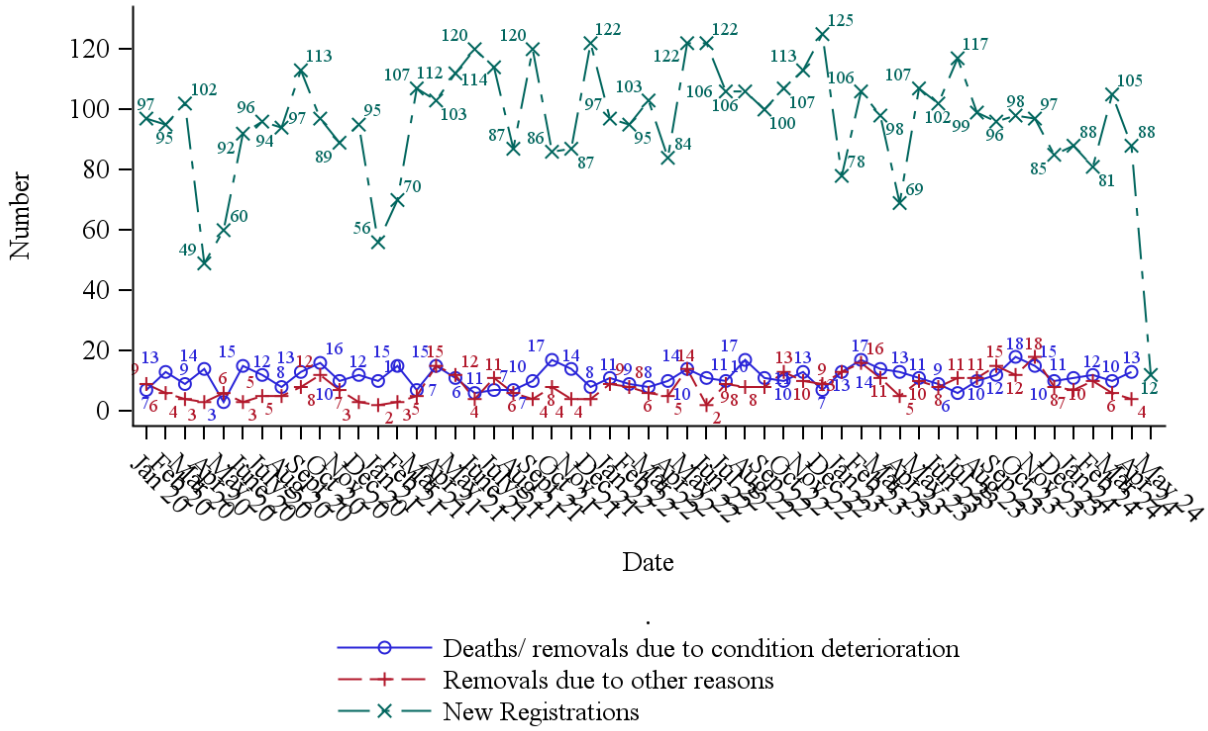


There were no ACLF patients who were registered to the Hepatoblastoma tier from 1 April 2024 to 1 May 2024.

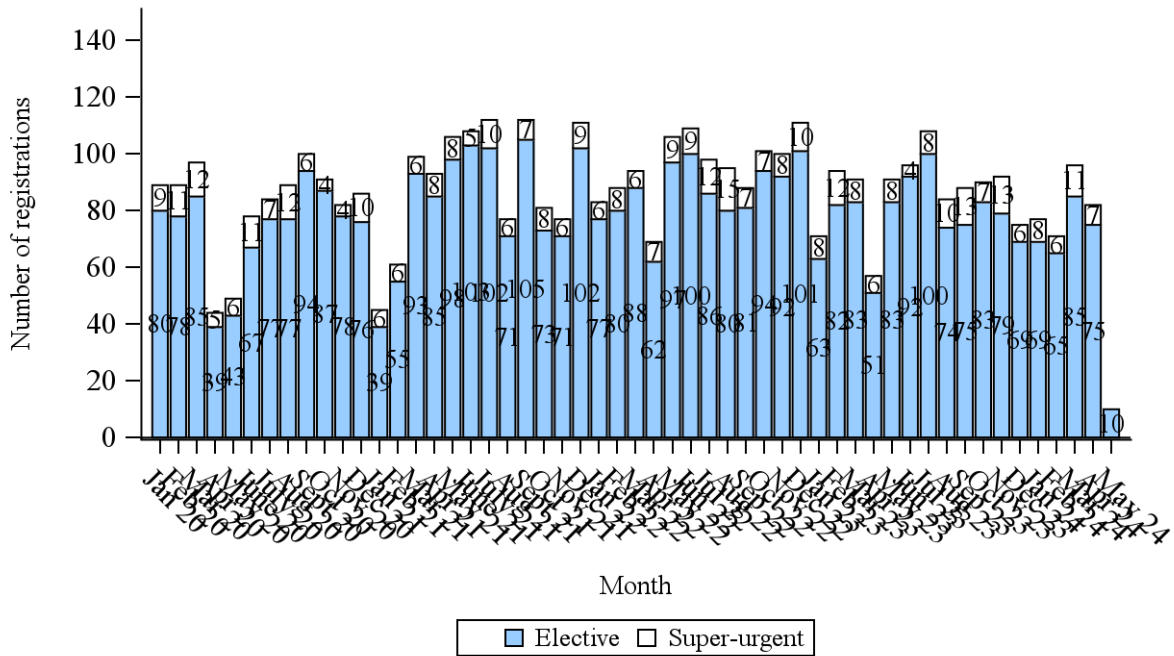
**Figure 17A** Number of new registrations onto the UK liver transplant list, by transplant centre and urgency status, 1 January 2020 to 7 May 2024



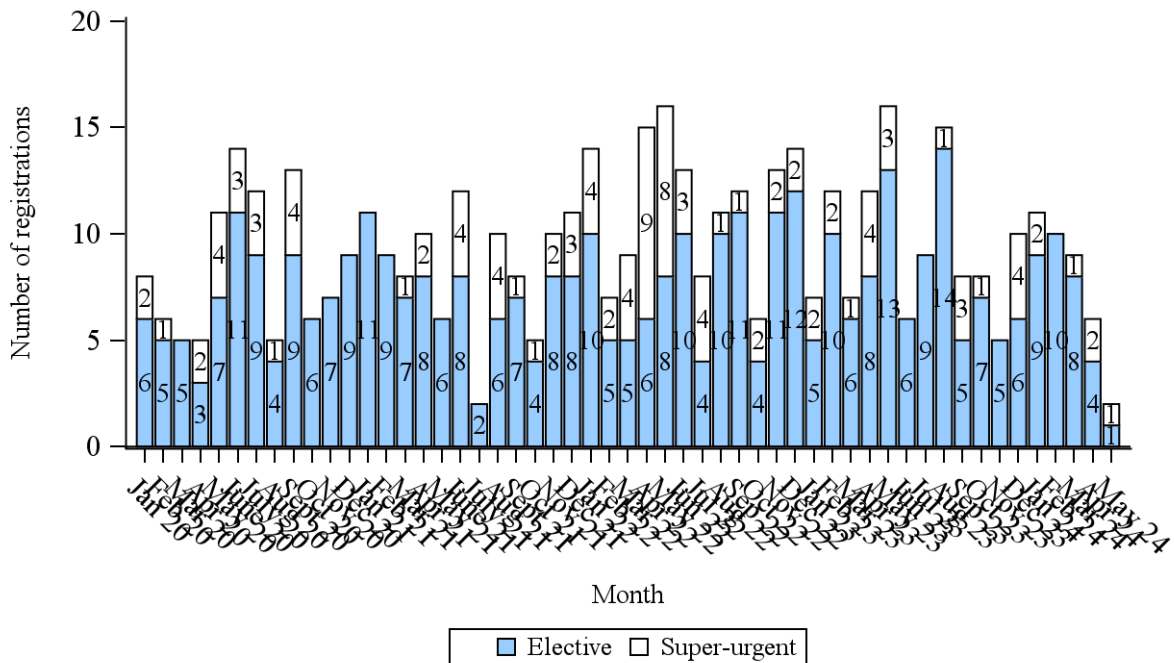
**Figure 18** Number of registrations, deaths and removals by month since 1 January 2020



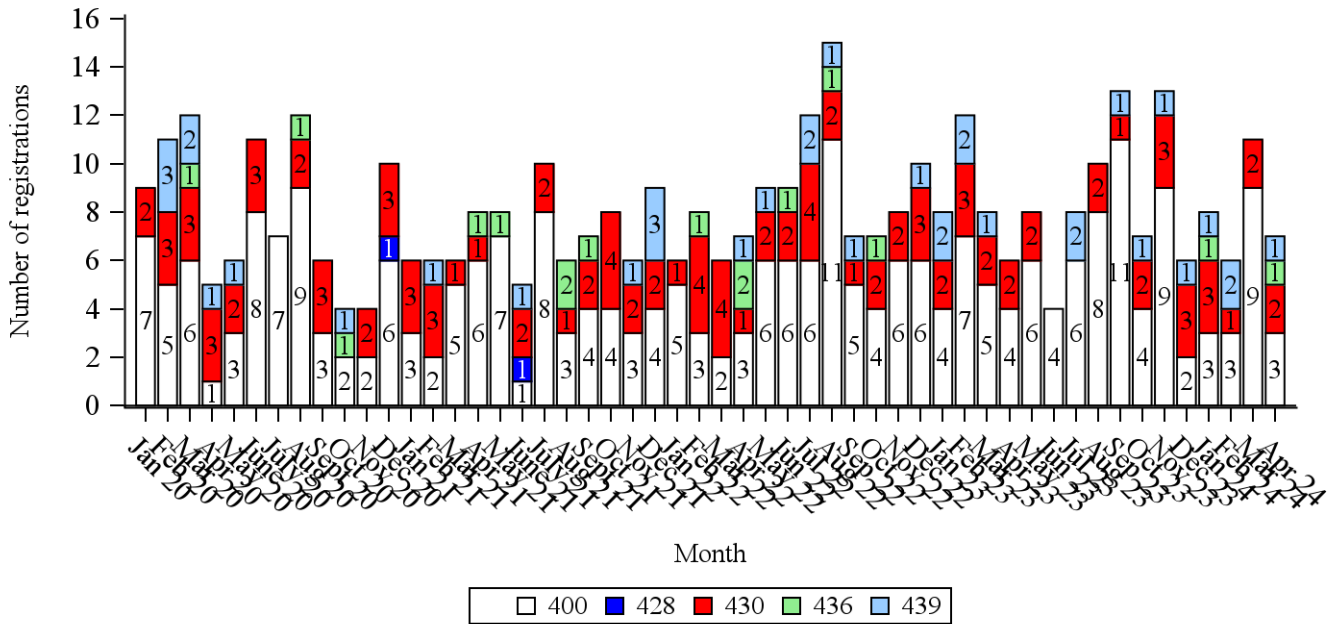
**Figure 19A** Number of new adult registrations onto the UK liver transplant list, by urgency status, 1 January 2020 to 7 May 2024



**Figure 19B** Number of new paediatric registrations onto the UK liver transplant list, by urgency status, 1 January 2020 to 7 May 2024



**Figure 20A** Number of new adult registrations onto the UK super-urgent liver transplant list, by primary liver indication, 1 January 2020 to 7 May 2024



**Figure 20B** Number of new paediatric registrations onto the UK super-urgent liver transplant list, by primary liver indication, 1 January 2020 to 7 May 2024

