

Objective

During the Organ Retrieval Process there are occasions when suspicious lesions are identified that require histopathology assessment. This is not a service provided or commissioned by NHSBT and the destination of samples can vary significantly.

This process provides guidance for all those involved in the histopathology assessment of samples that may affect the safety of an organ, including SNODs, NORS teams, histopathologists, Biomedical Scientists, Hub Operations staff, and [Receiving Centres](#)

Changes in this version

[Addition to update the DFCS handover form and the regional post donation trackers.](#)

[Merging of 'Transplanting Centre' and 'Receiving Centre' responsibilities.](#)

[Addition of report to be uploaded by the SN.](#)

[Procedural diagram updated to new format.](#)

Roles

- **National Organ Retrieval Team (NORS) –** Identify any lesion that may require histopathology assessment, gain advice where required and inform the SNOD as soon as lesion identified. To complete all relevant clinical information on National Request Form (**FRM5867**)
- **Specialist Nurse – (SN)** To facilitate the organisation of samples to be sent for histopathology assessment as agreed by the NORS surgeon and complete demographics on the National Histopathology Request Form (**FRM5867**). To communicate, report and document any findings requiring additional action that is identified during the organ donation process to Hub Operations. The SN is responsible for ensuring the provisional and final histopathology results are ascertained. SN to follow **SOP4938** for sharing of new clinical information.
- **Histopathology Laboratory –** Notify SN/Hub Operations of any findings or results following histopathology assessment.
- **Hub Operations (HO) –** To follow **SOP4938** for sharing of new clinical information.
- **Receiving Centres –** To notify Hub Operations if there is any change in agreed process for assessment. To notify Hub Operations immediately if any new suspicious lesions are identified at organ assessment at the Recipient Centre as per **SOP5735**.
- **Donor Family Care Service (DFCS) –** To forward all histopathology findings to the SN as soon as they are received from Hub Operations. N.B. the DFCS is not a 24/7 service.

Instructions

This SOP is intended to support and advise the SN on steps when a need for histopathology is identified during deceased donor organ retrieval. Such findings require immediate assessment, communication, and an application of critical thinking by the SN and NORS Lead in theatre.

On all occasions access to histopathology should be considered in the following order:

1. Donor Hospital (Trust / Board)

Controlled if copy number stated on document and issued by QA

(Template Version 03/02/2020)

SOP5352/6 – Findings During Retrieval Requiring Histopathology Assessment



Blood and Transplant
Copy No:
Effective date: 07/08/2024

2. Attending NORS Team base hospital
3. 'Recipient Centre' (sample sent with accepted organ for histopathology) in order of urgency
 - Cardiothoracic
 - Liver
 - Kidney

Care should be taken to ensure all options are explored however consideration must also be given to the type of donor DBD/DCD and the point in the retrieval process when the findings are made. Recipient centres must be made aware as fast as possible that there is a suspicious lesion (Cardiothoracic recipient surgery may already have commenced). For example:

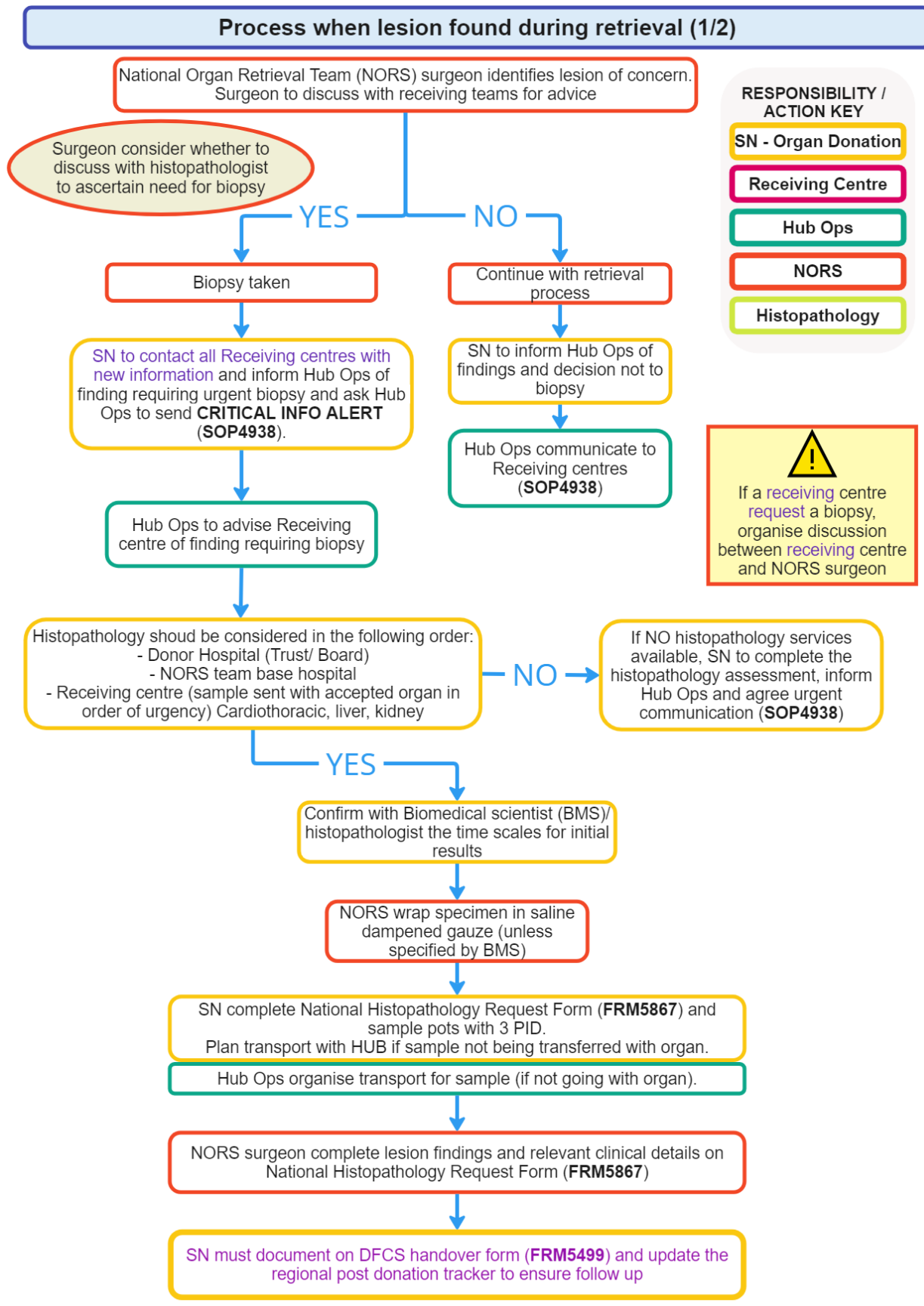
- DBD – whether prior to or after cross clamp. It is permitted to delay cross clamp for 60 minutes to identify a centre/pathologist who will provide an opinion.
- DCD – will always be post asystole therefore impact on cold ischaemic times. If novel therapies are in use such as NRP / Organ Ox, this will potentially allow additional time to seek histopathology support. (NRP applies only to abdominal organs, and OrganOx applies only to liver).

On all occasions immediate findings must be communicated to all centres as per SOP4938 Sharing Clinical Information.

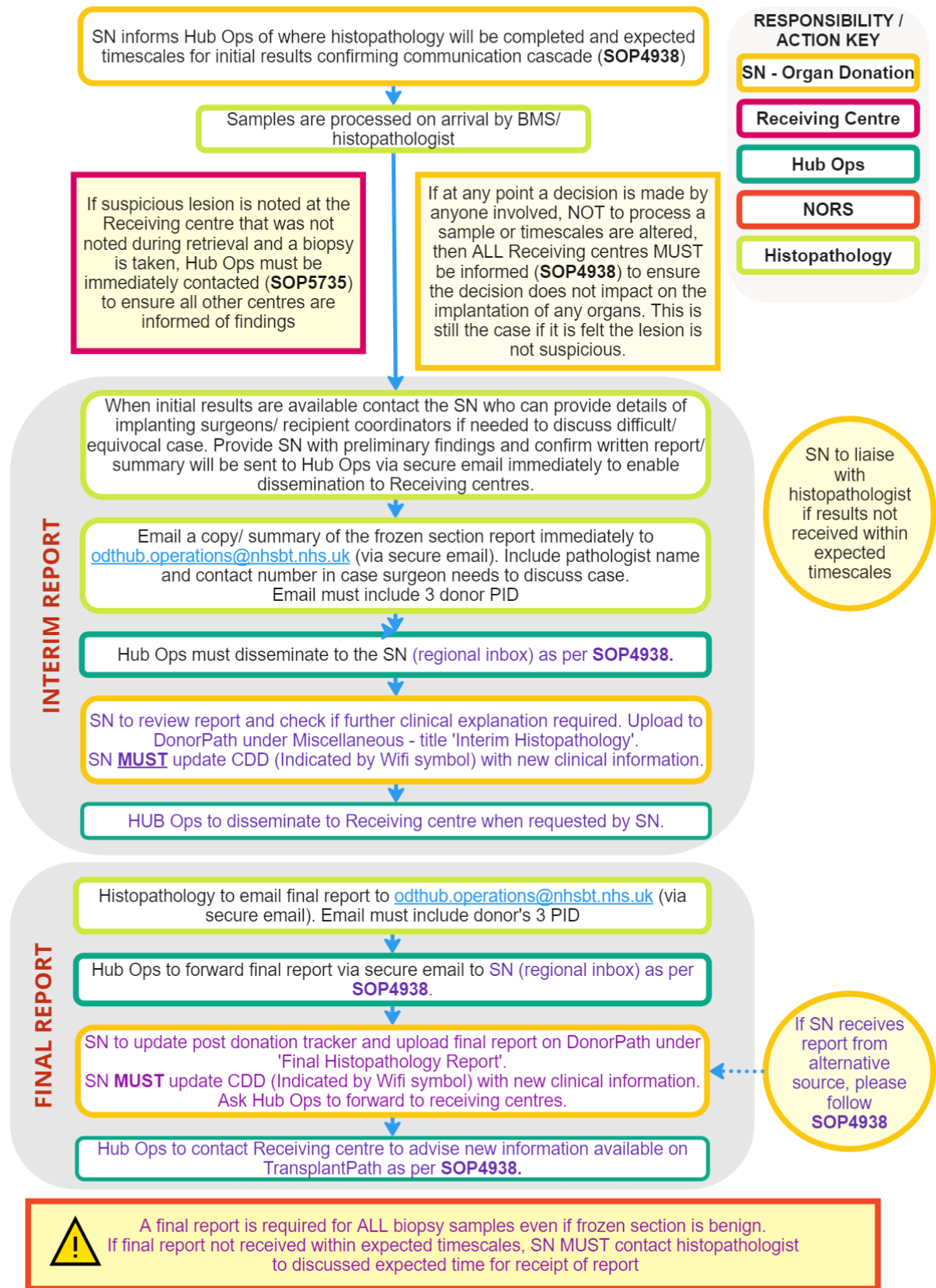
The process below outlines the steps to be taken when histopathology resource is identified. On all occasions where samples are taken for histopathology FRM5867 must be used which is available via the SN Donor Pack.

In circumstances where no histopathology is available resulting in stand-down of the deceased organ donors a Clinical Governance notification should be made: <https://www.odt.nhs.uk/odt-structures-and-standards/governance-and-quality/tell-us-about-an-incident/>

SOP5352/6 – Findings During Retrieval Requiring Histopathology Assessment



Process when lesion found during retrieval (2/2)





End of Procedure

Definitions

- None

Related Documents / References

- **FRM5867** – National Histopathology Request Form
- **FRM5499 - SN to DFCS Handover Form**
- **MPD881** – Findings Requiring Additional Action
- **SOP4938** – Clinical Information Sharing
- **SOP5735** – Findings at a Transplant Centre Requiring Histopathology