

# Overview of Living Donor Liver Transplant Activity

Rhiannon Taylor

Statistics and Clinical Research, NHSBT

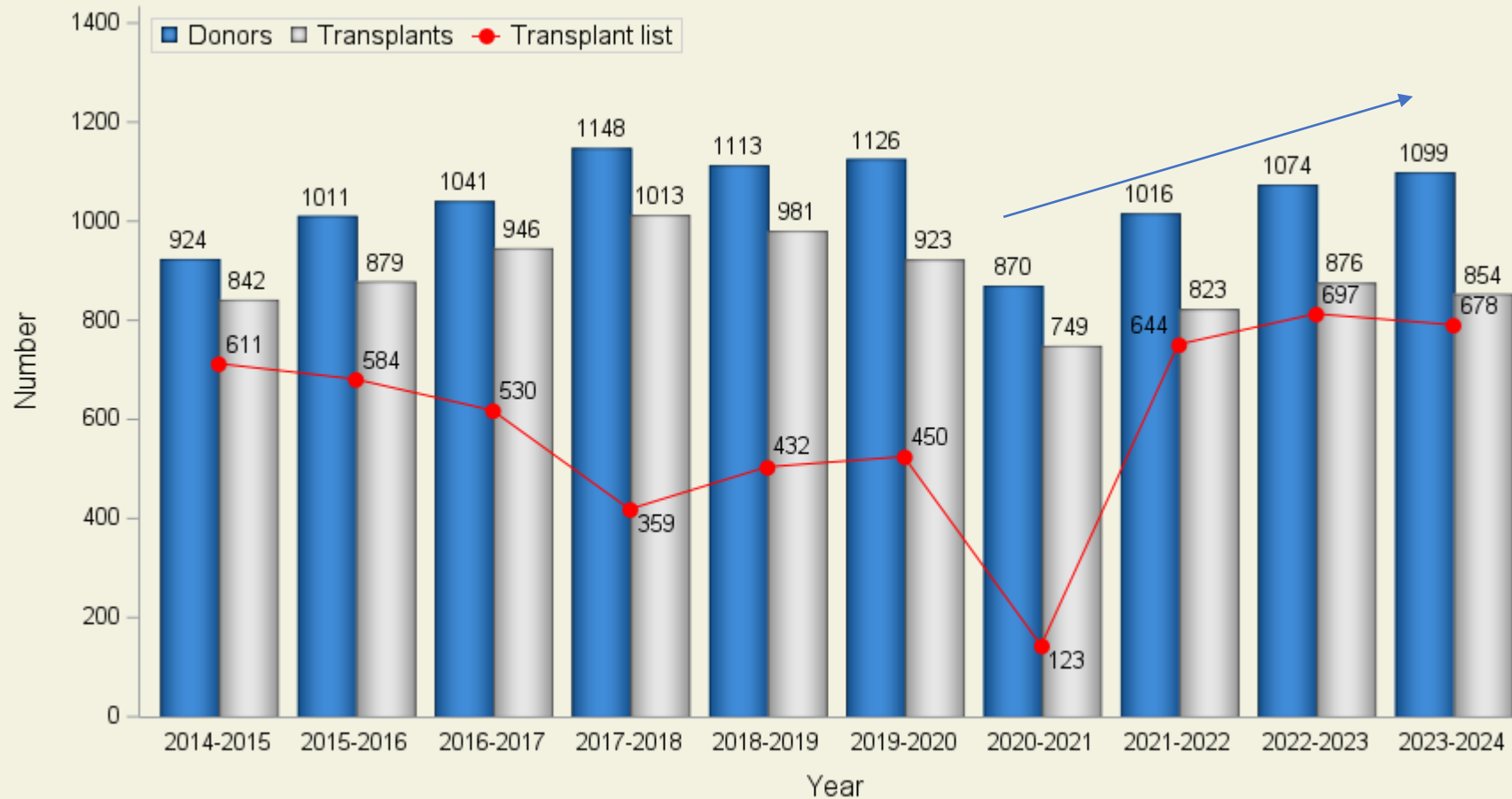
# Summary of Activity

# Deceased donors, transplants and transplant list



Blood and Transplant

Over the last year

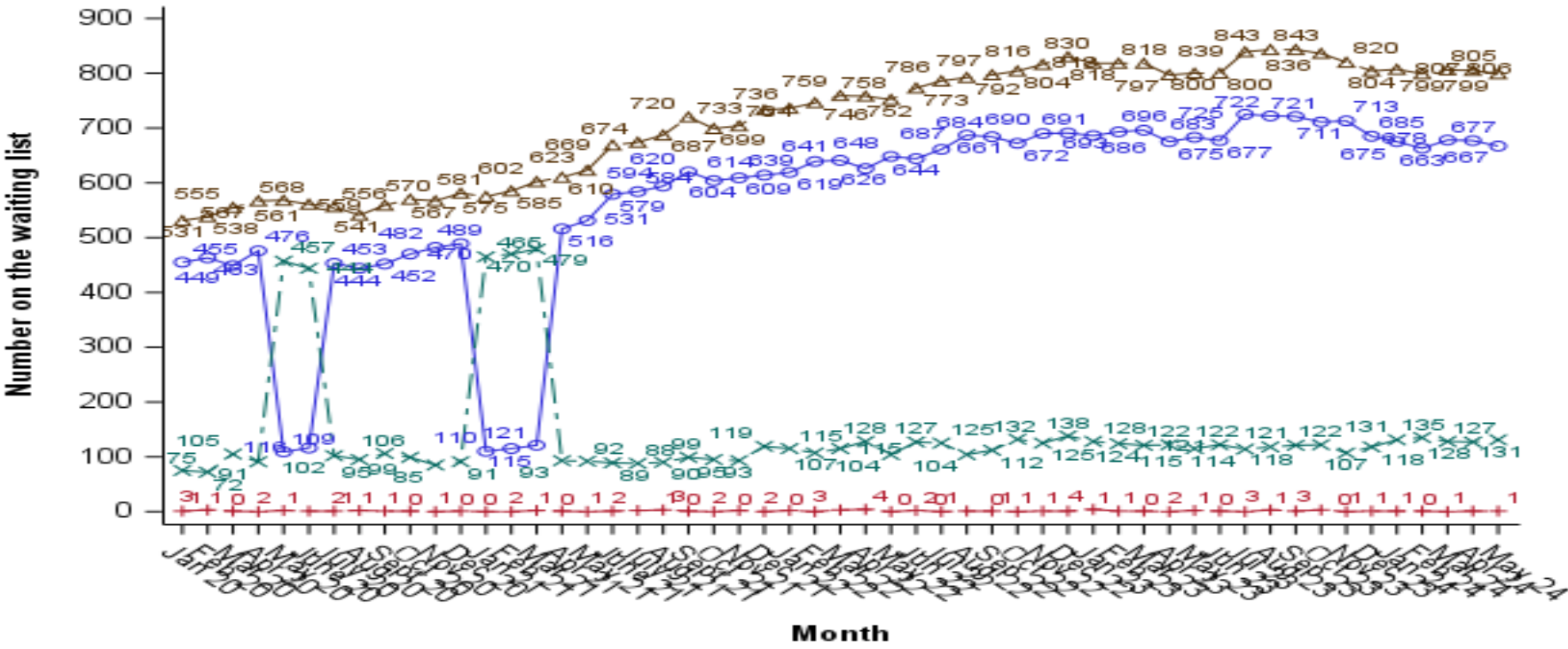


Increase in deceased liver donors

Slight decrease in number of transplants

Transplant list larger than 10 years ago

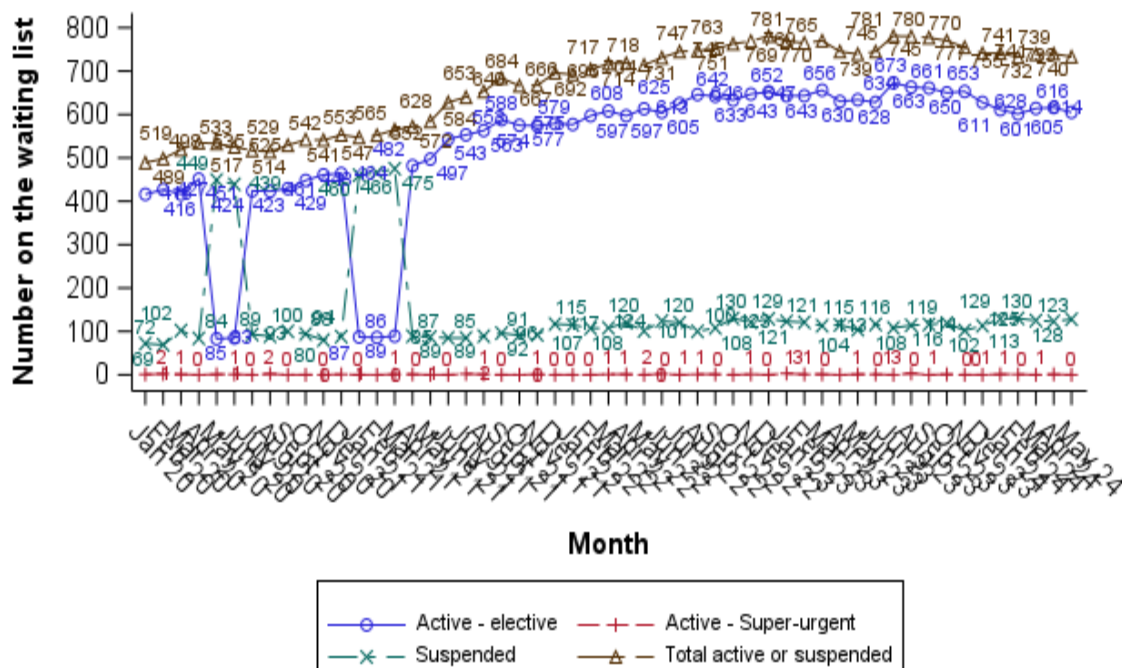
# UK liver transplant list



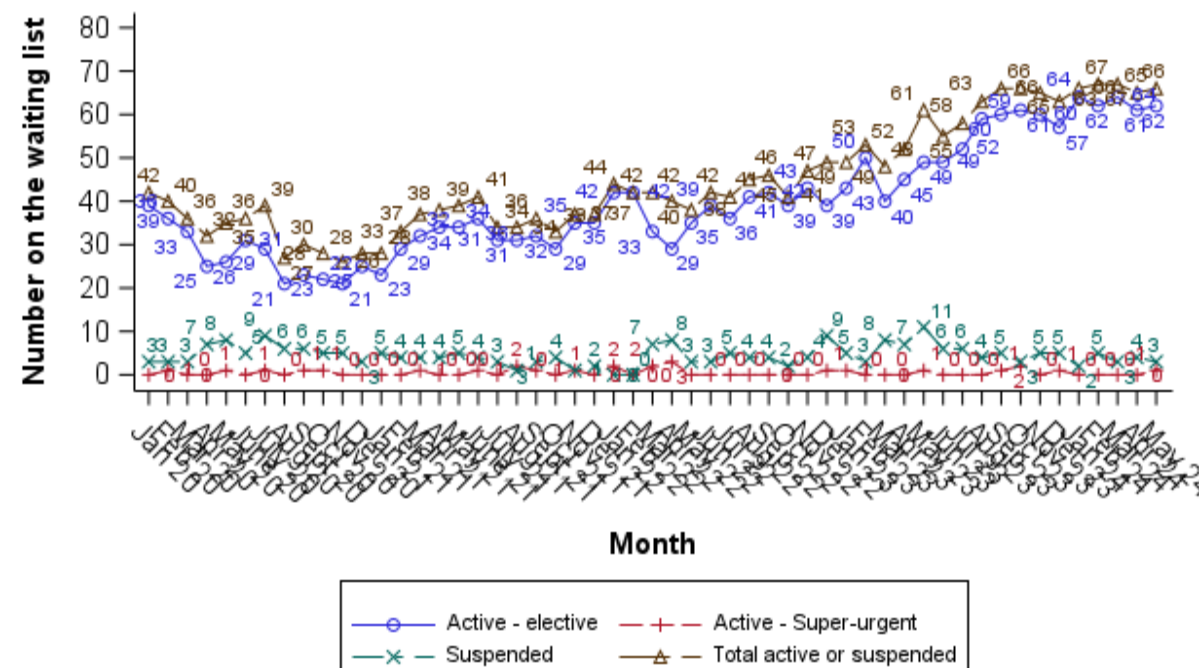
|     |                   |     |                           |
|-----|-------------------|-----|---------------------------|
| —○— | Active - elective | —+— | Active - Super-urgent     |
| —x— | Suspended         | —△— | Total active or suspended |

# UK liver transplant list

## Adult



## Paediatric

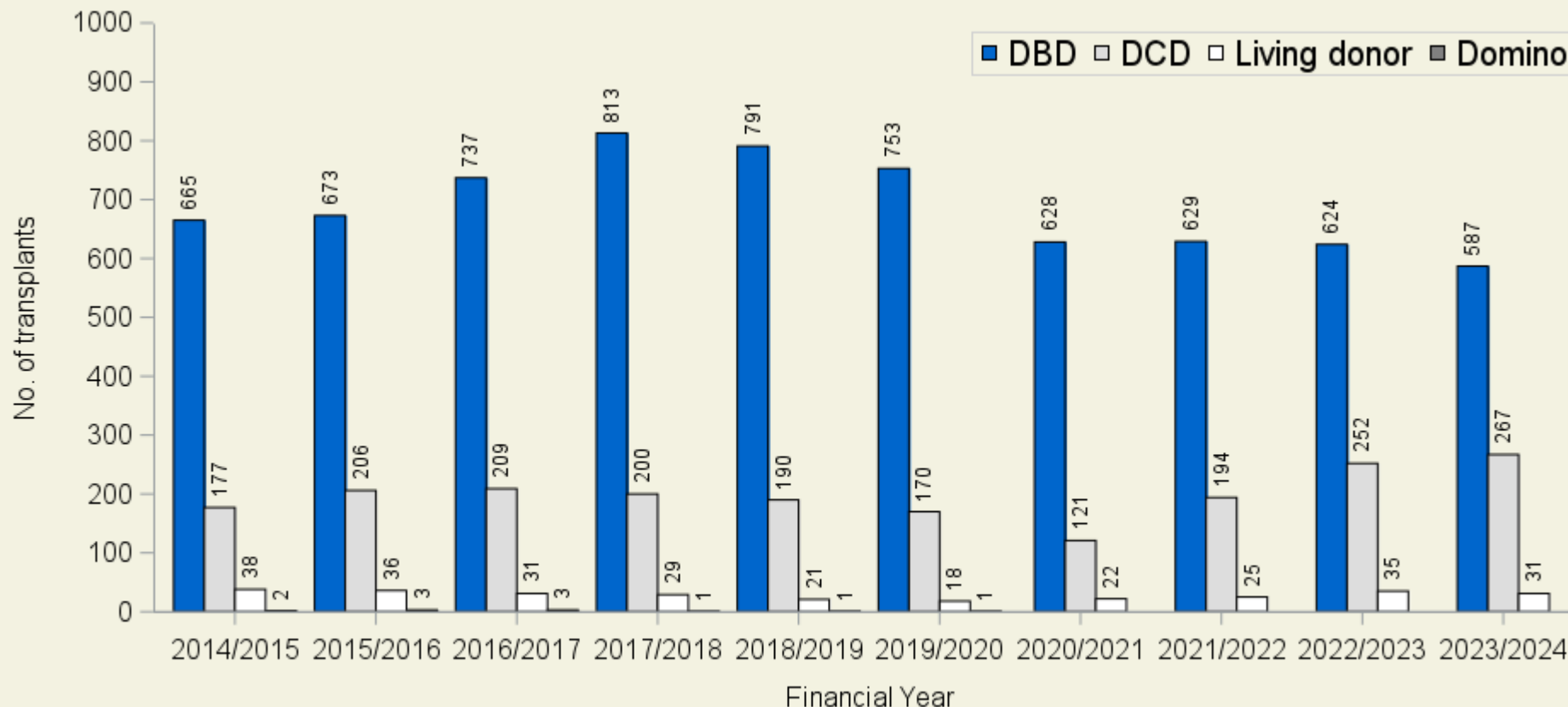


Increase in transplant list observed for both paediatric and adult patients

# UK liver transplant activity



Blood and Transplant



Over the last year

Decrease in DBD donors

Increase in DCD donors

Living donation has

remained static

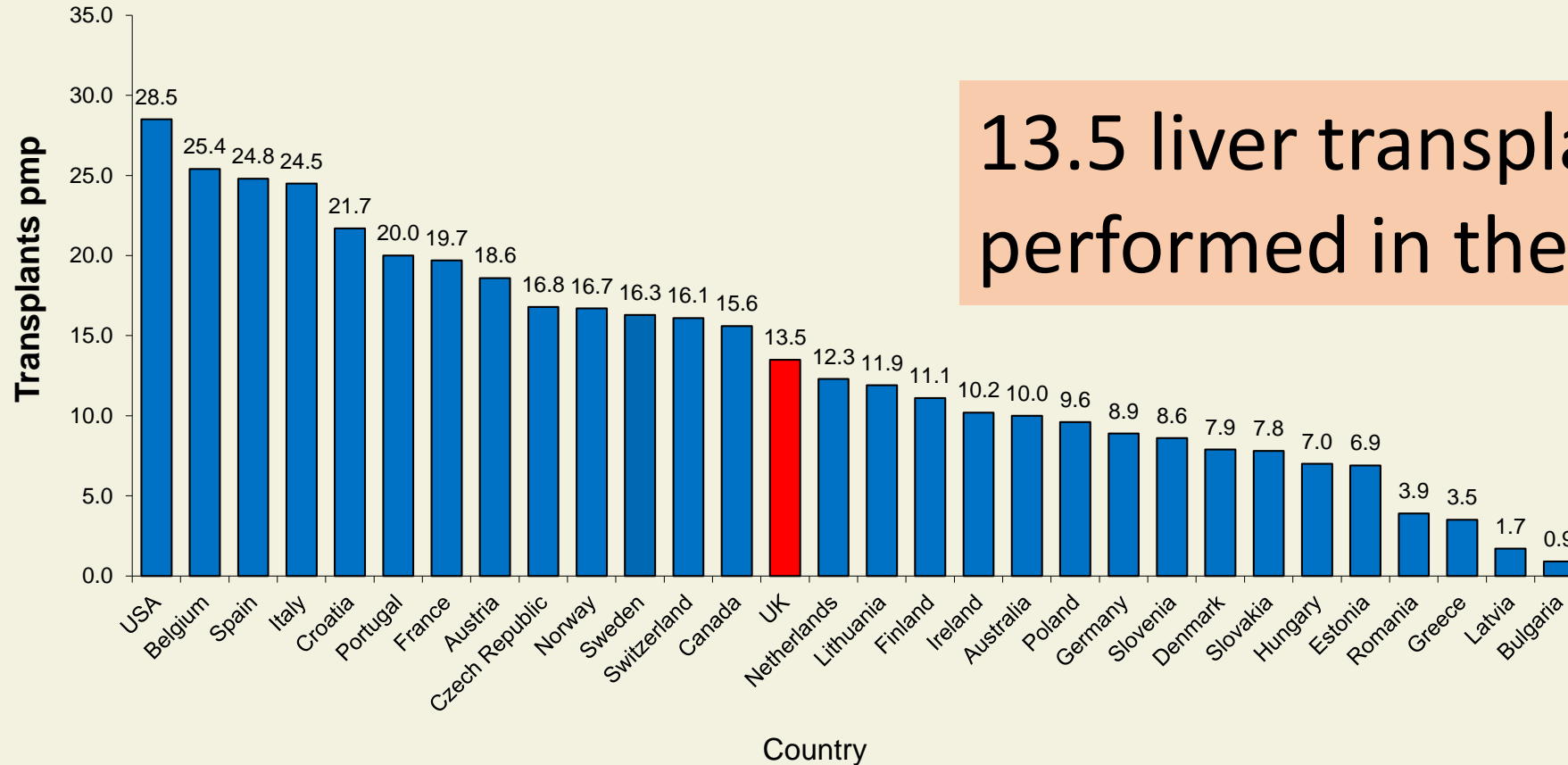
Median: 30 per year

Range: 18 - 38

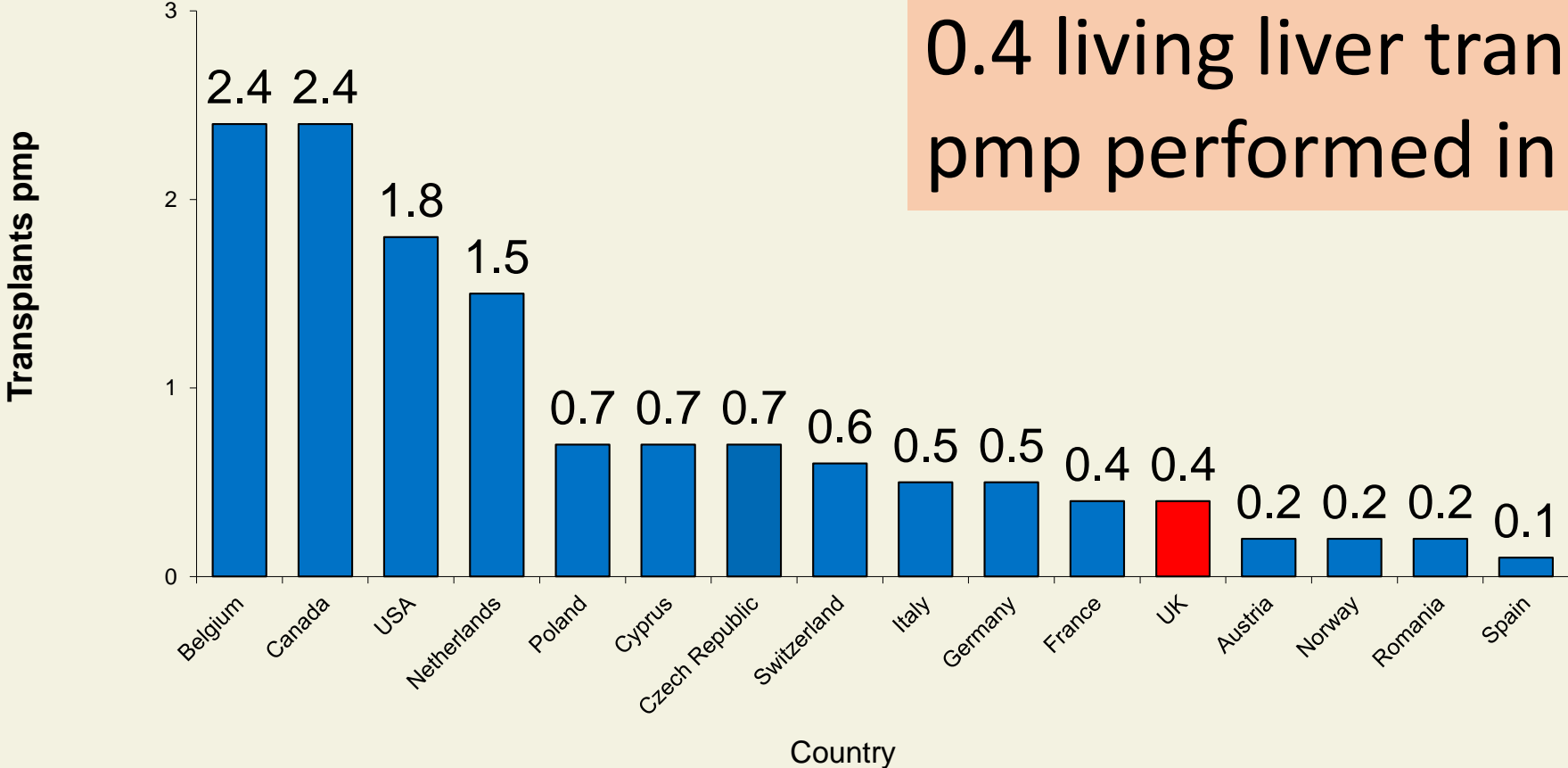
286 living donor transplants performed

Caring Expert Quality

# International liver transplant rates, 2022



# Living donor liver transplant rates, 2022



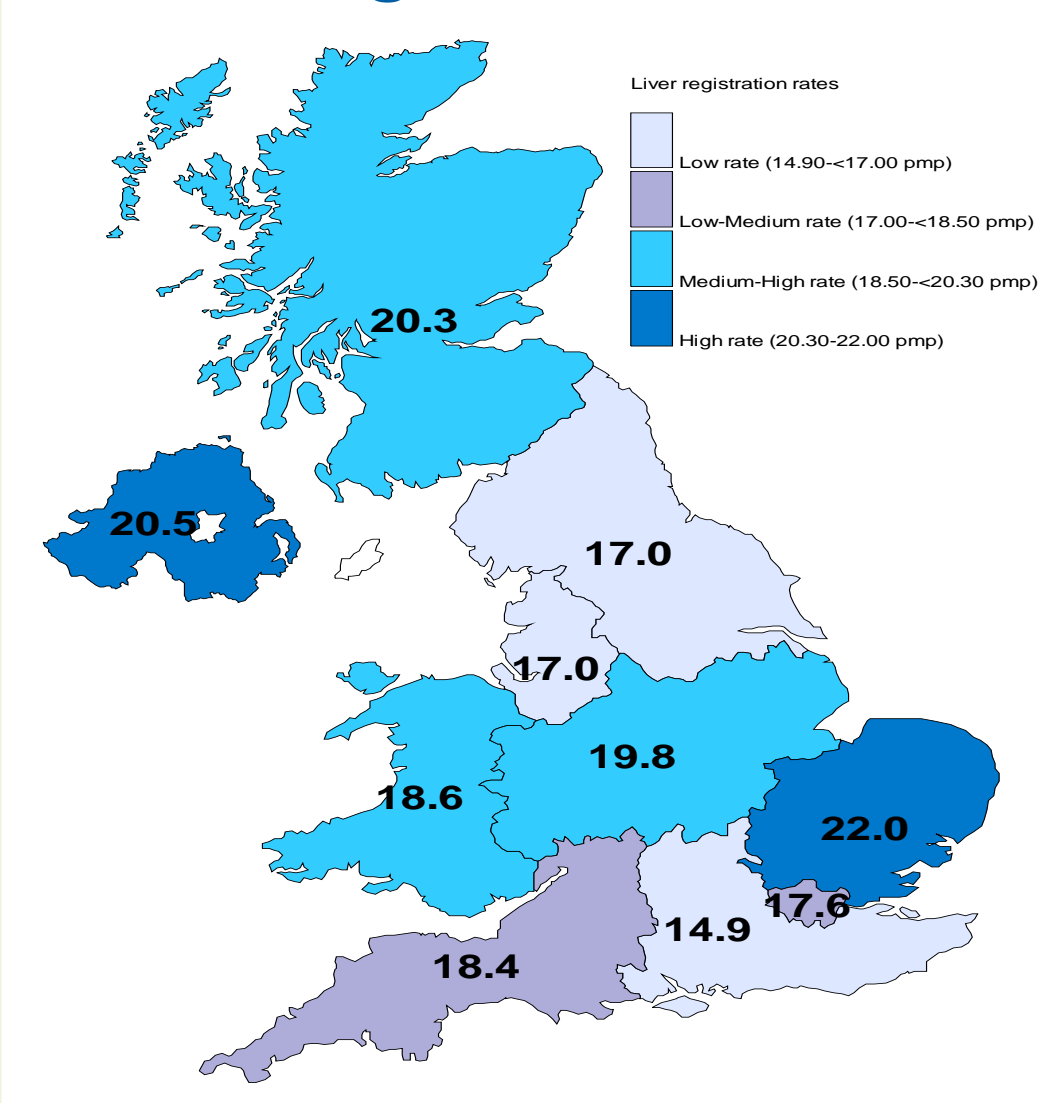
0.4 living liver transplants pmp performed in the UK

Source: Council of Europe – Transplant Newsletter

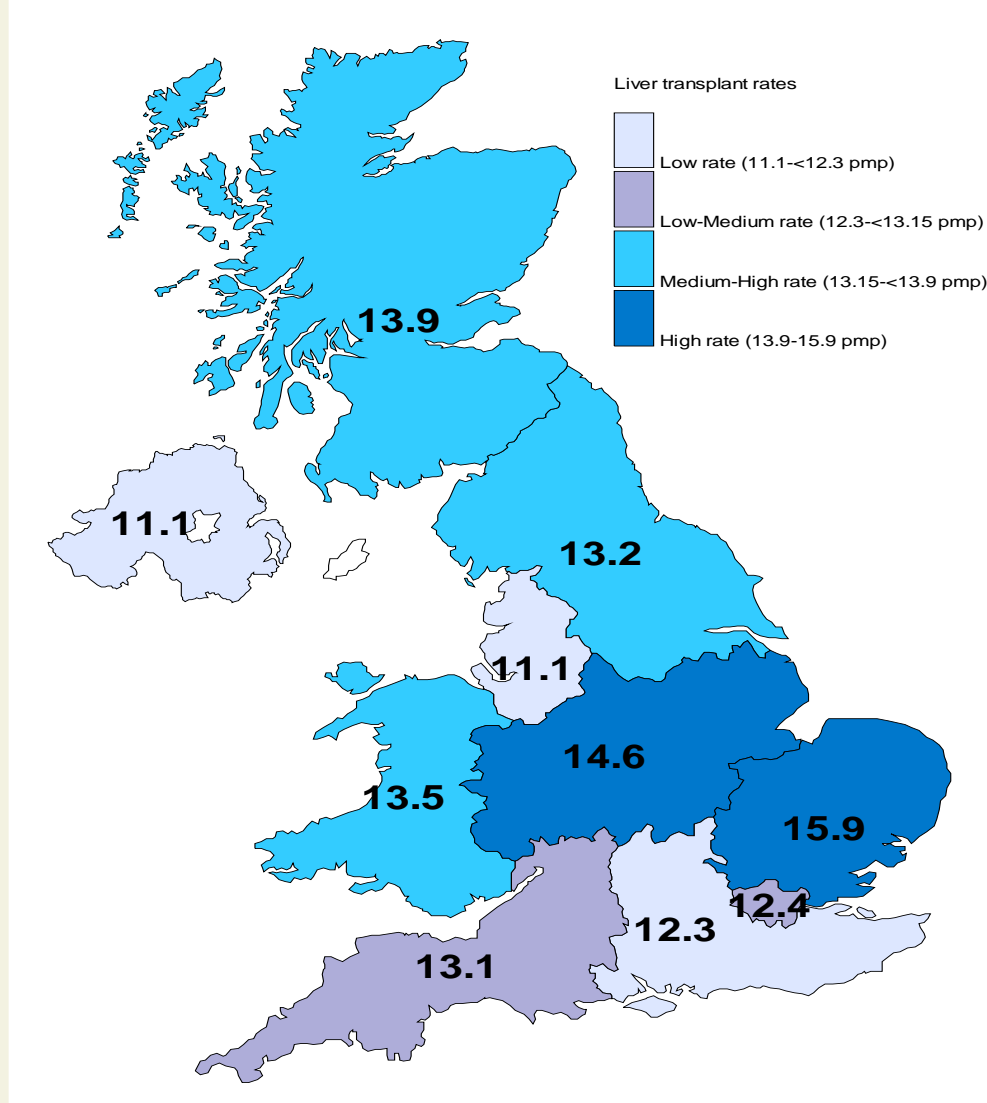


# Geographical variation - recipient

## Registrations

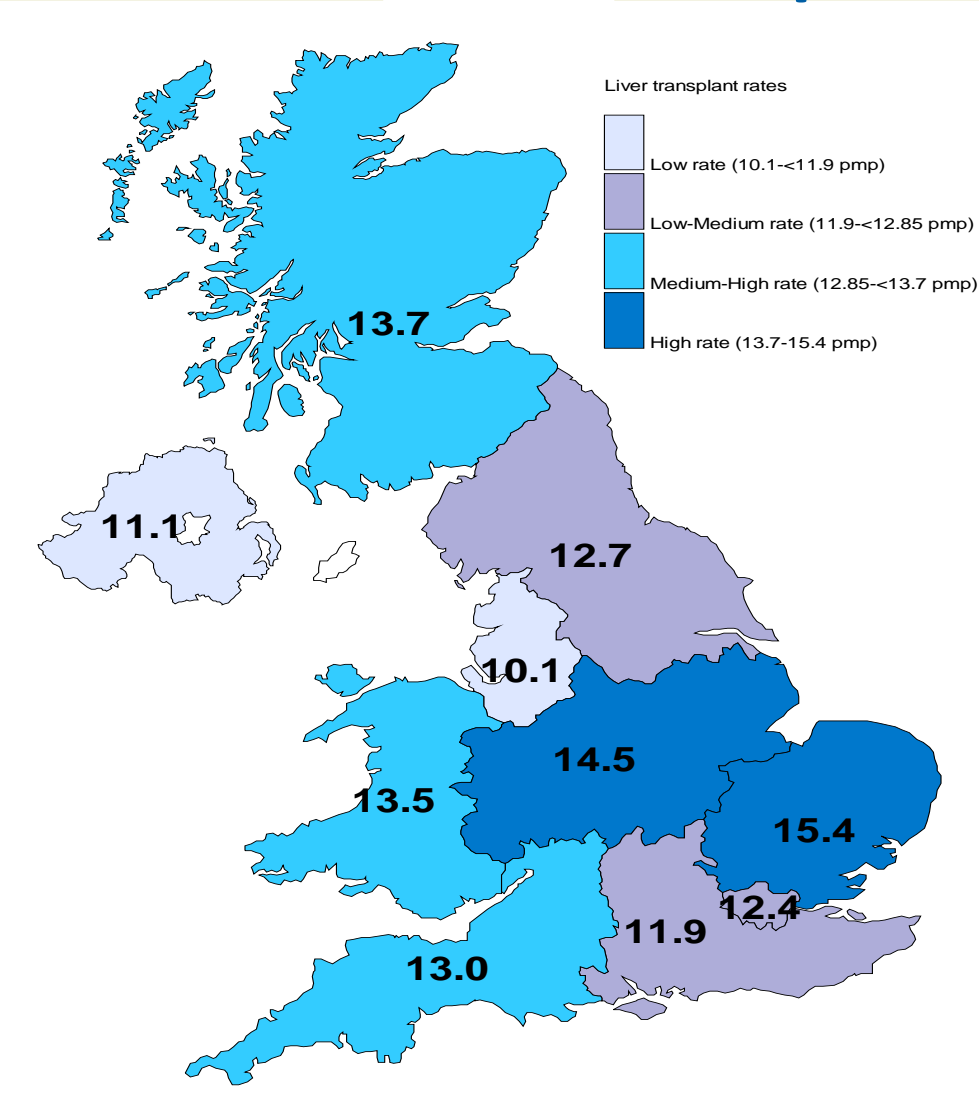


## Transplants

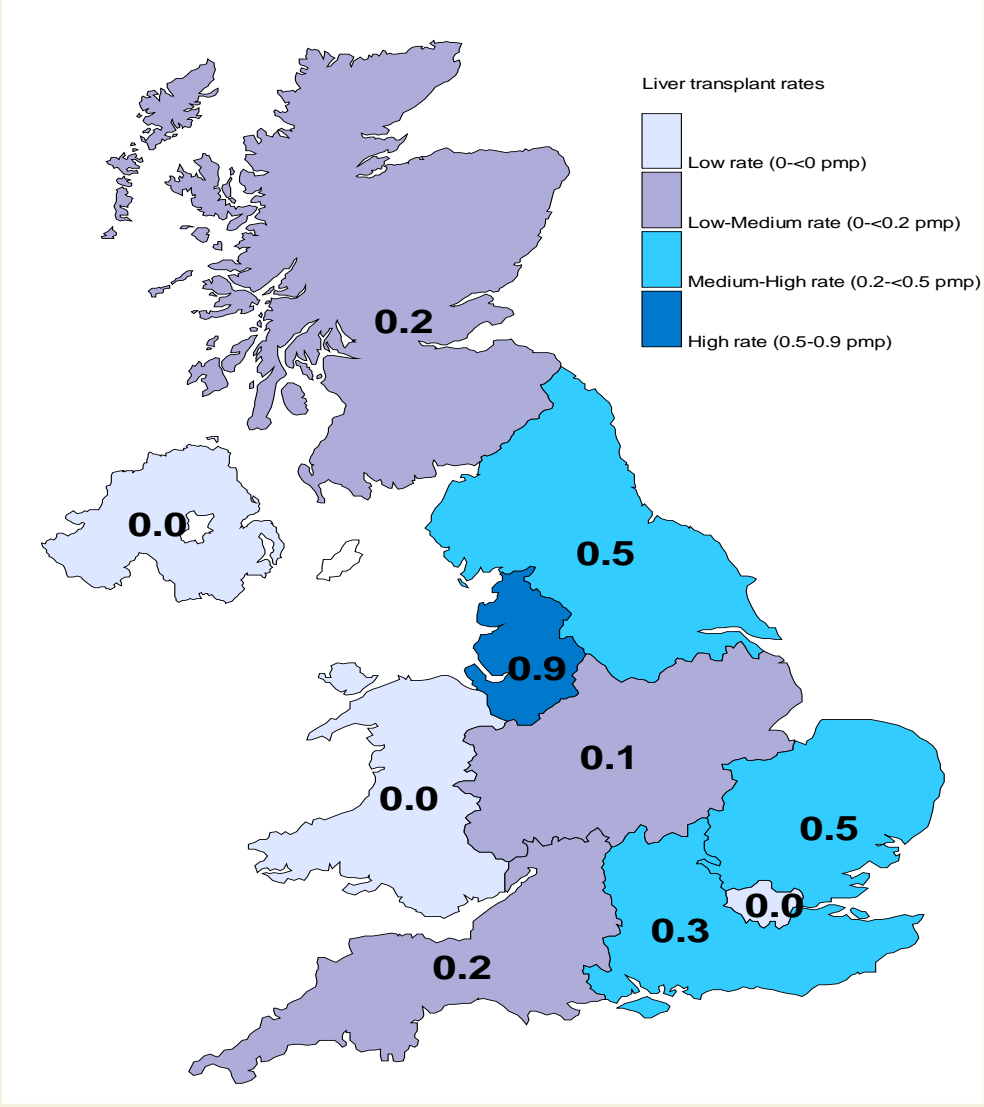


# Geographical variation - recipient

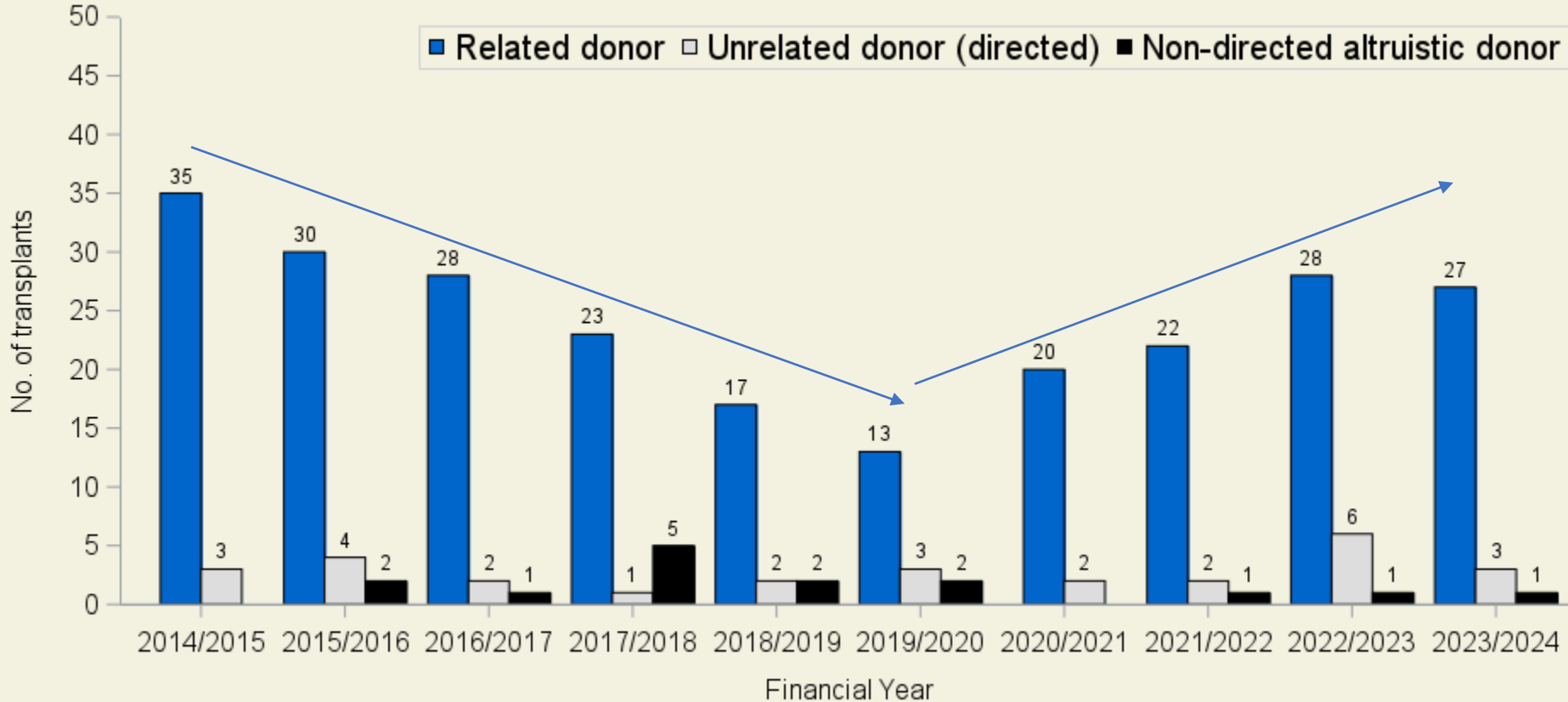
## Deceased donor transplant



## Living donor transplants



# UK living liver transplant activity - donor type



**286 living donor transplants**

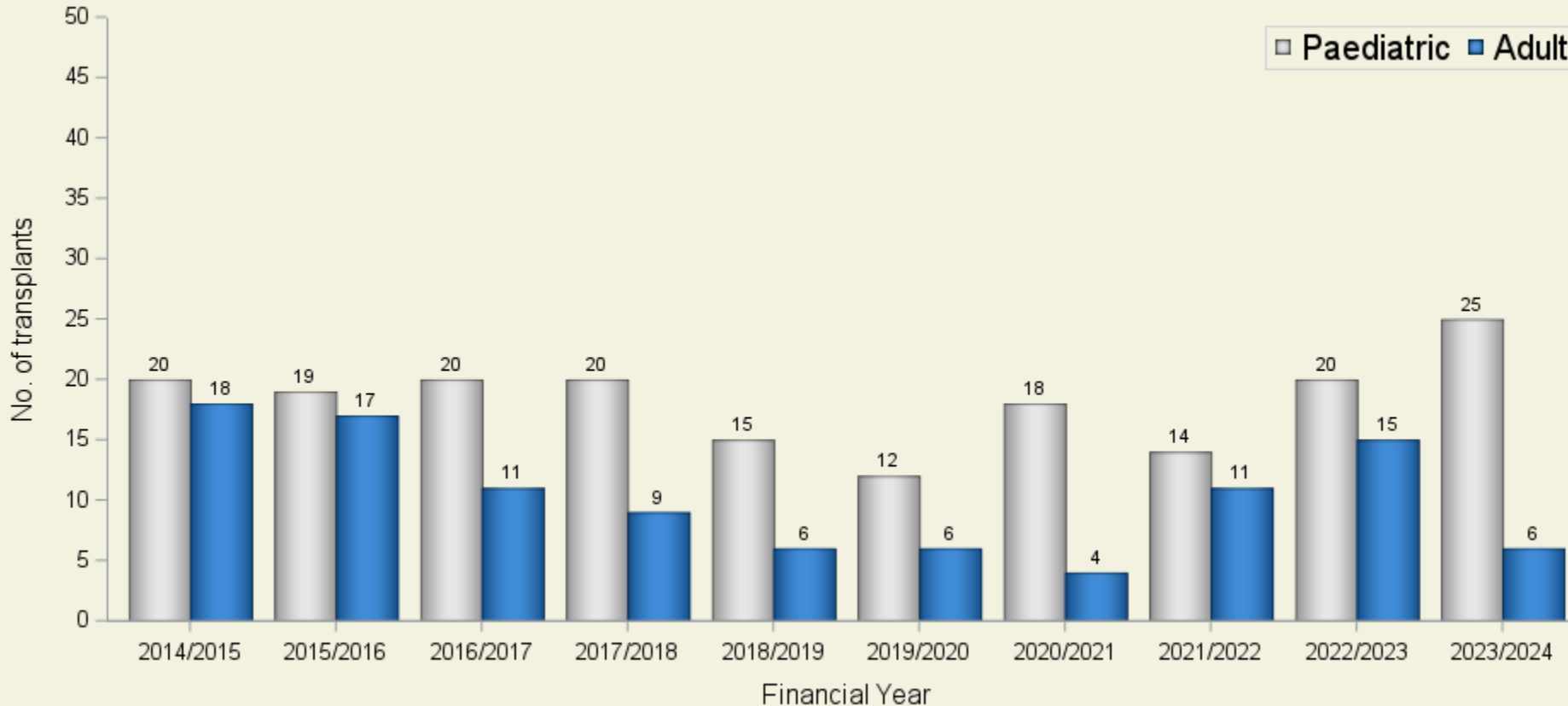
- 271 (95%) directed
  - 243 (90%) related
- 15 non-directed altruistic donors
  - 13 paediatric recipients

# UK living liver transplant activity

## - recipient age group



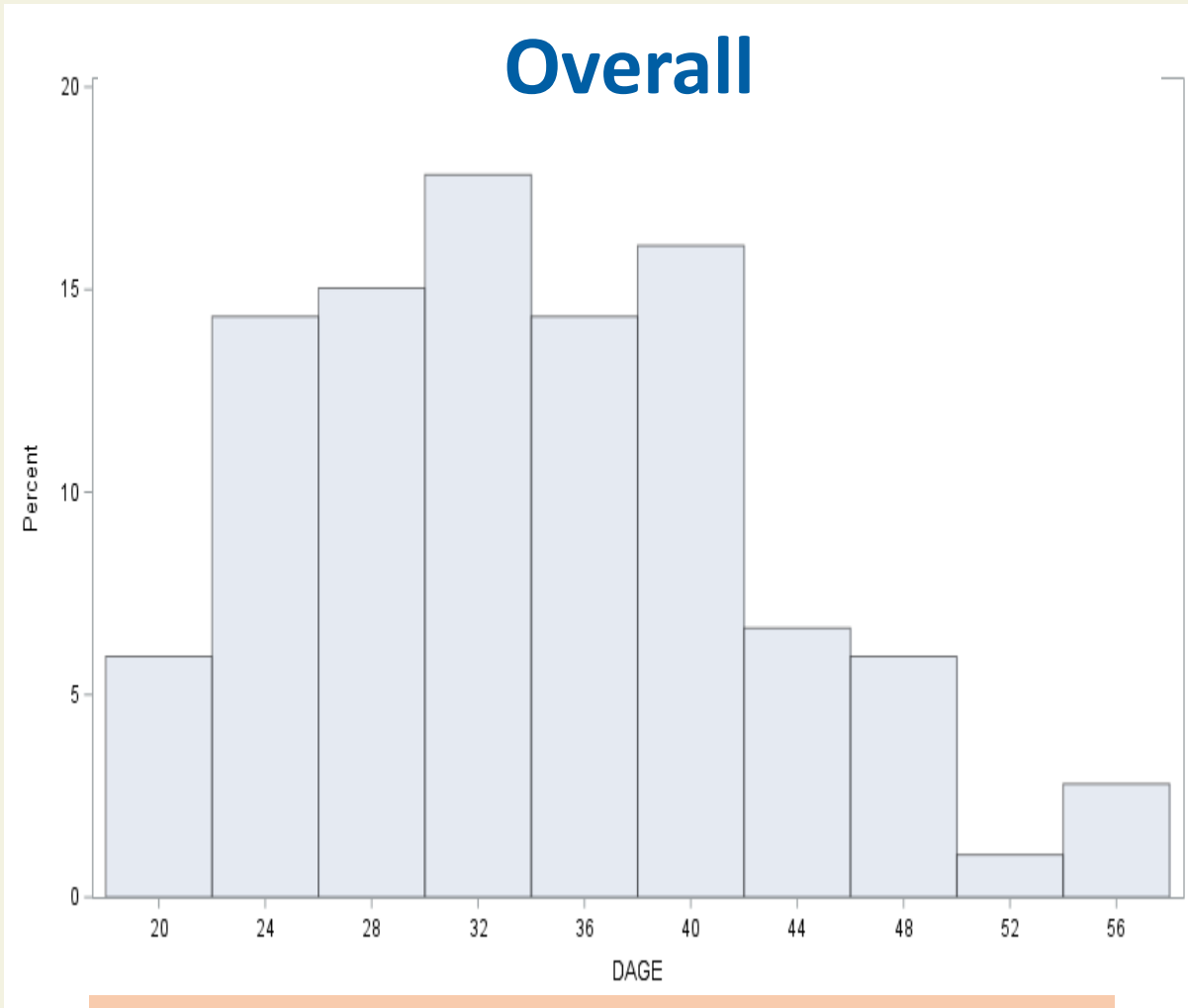
Blood and Transplant



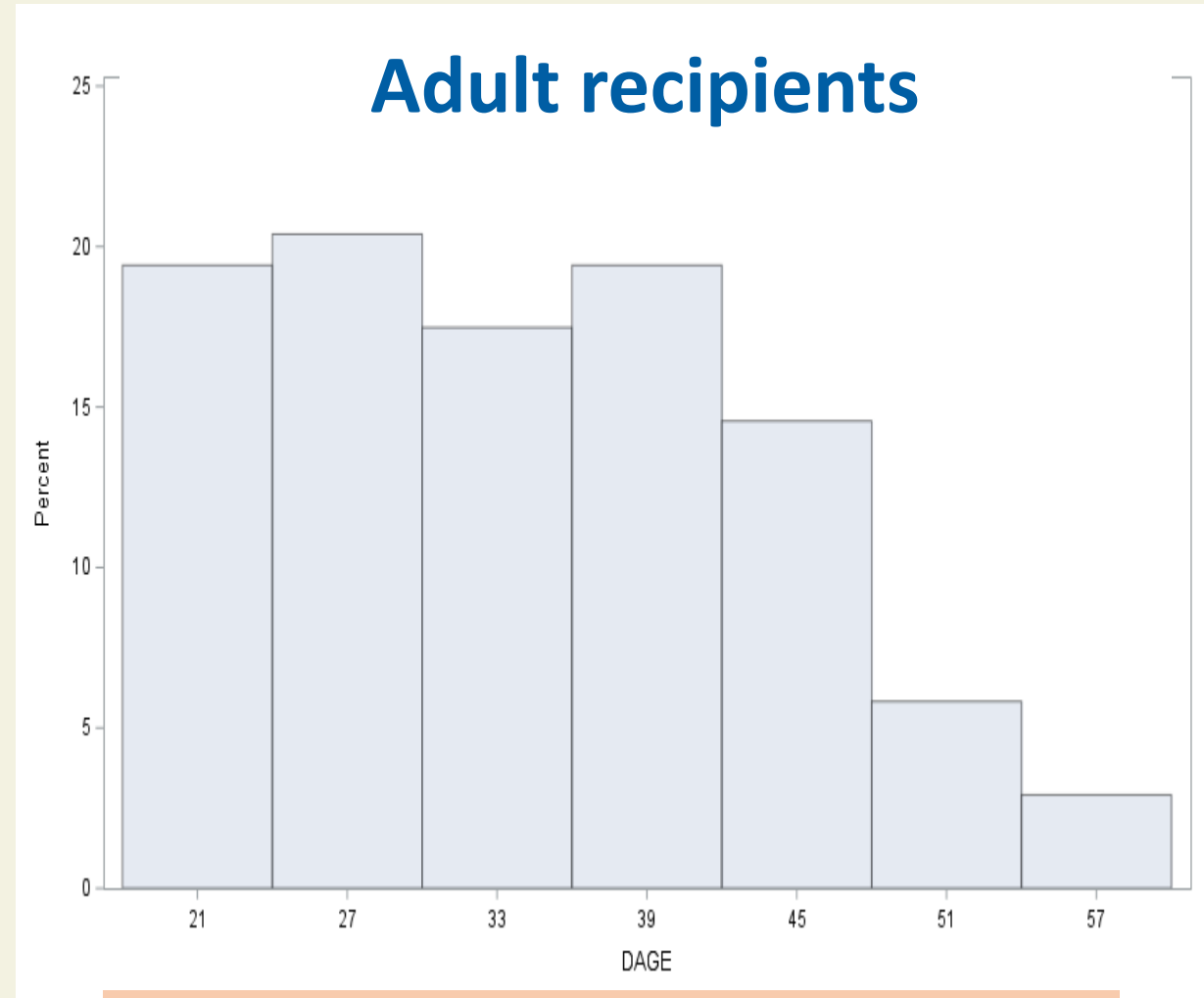
**286 living donor transplants**

- 183 (64%) paediatric recipients
- 103 (36%) adult recipients  
Median: 10 per year  
Range: 4 - 18

# Living donor age



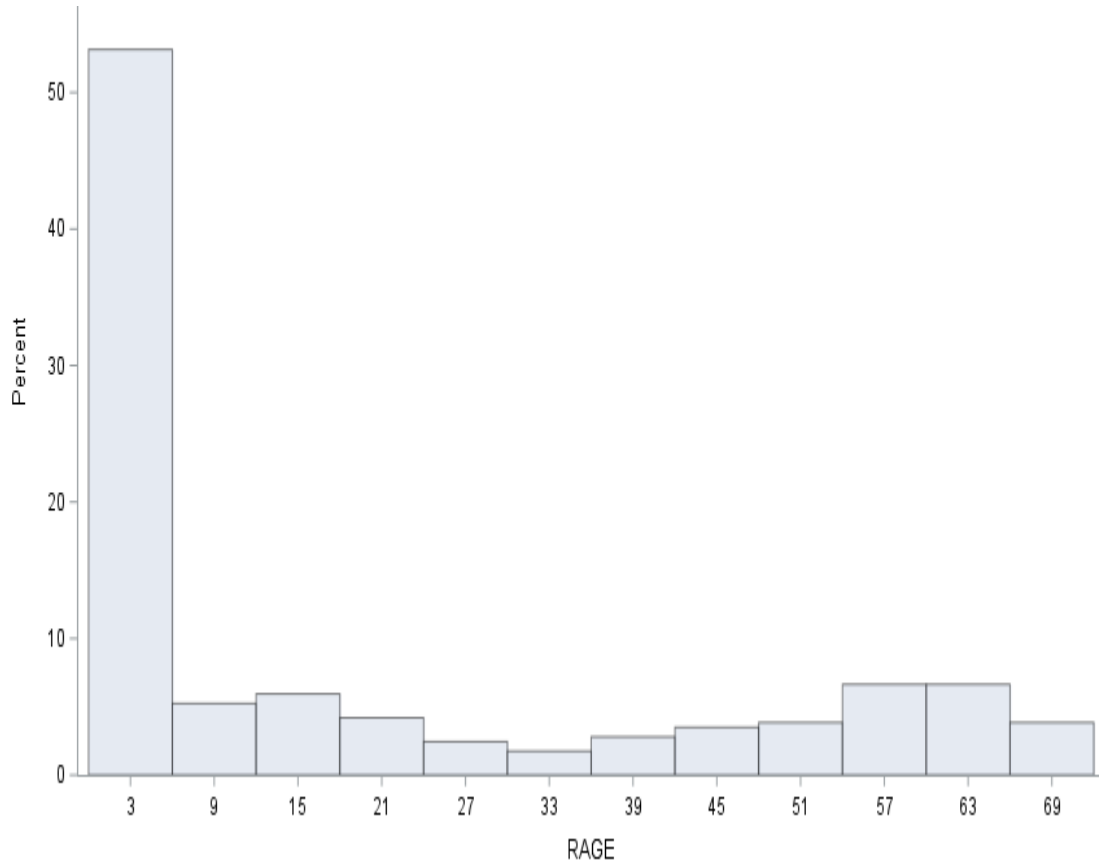
Median (IQR; range) donor age: 32 (25,41; 18,57)



Median (IQR; range) donor age: 33 (27,39; 18,57)

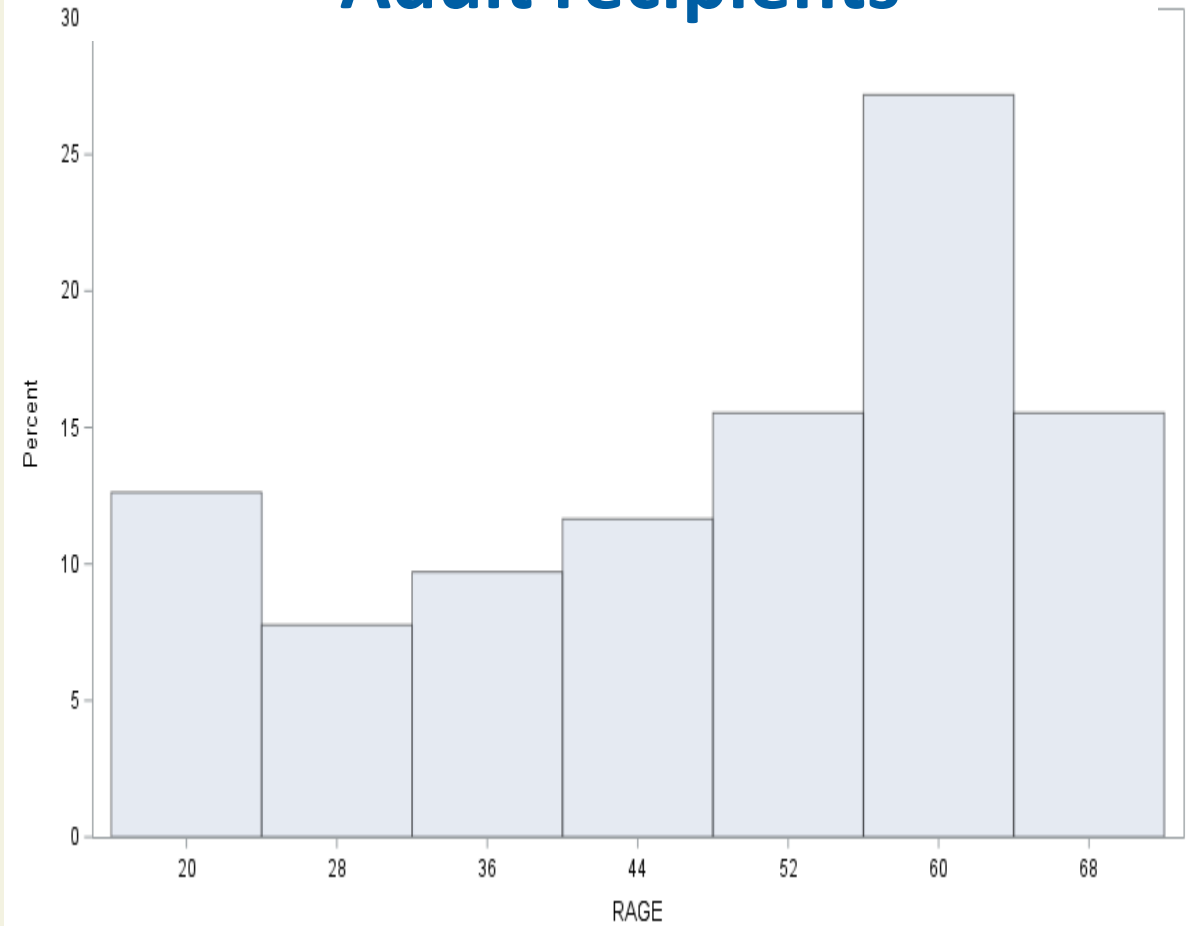
# Recipient age

## Overall



Median (IQR; range) age: 4 (1,40; 0, 71)

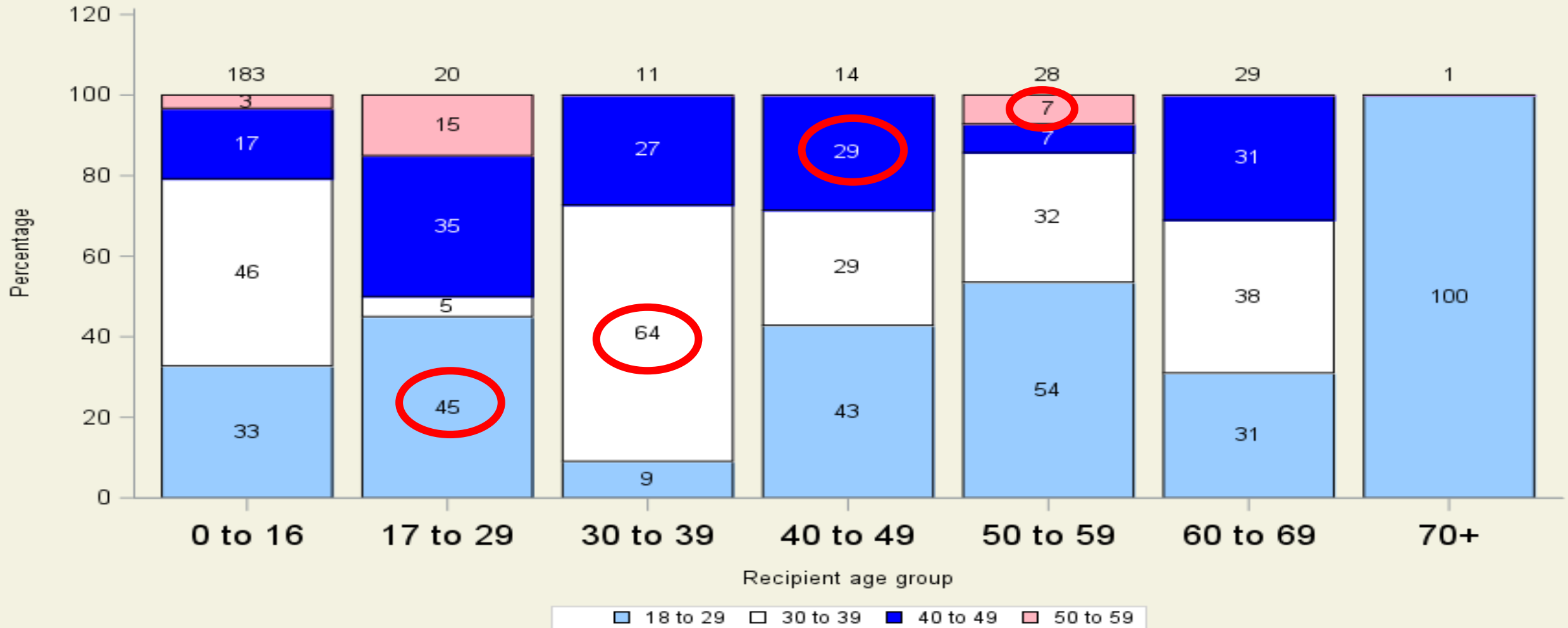
## Adult recipients



Median (IQR; range) age: 53 (36,60; 17,71)

**Caring Expert Quality**

# Donor to recipient age

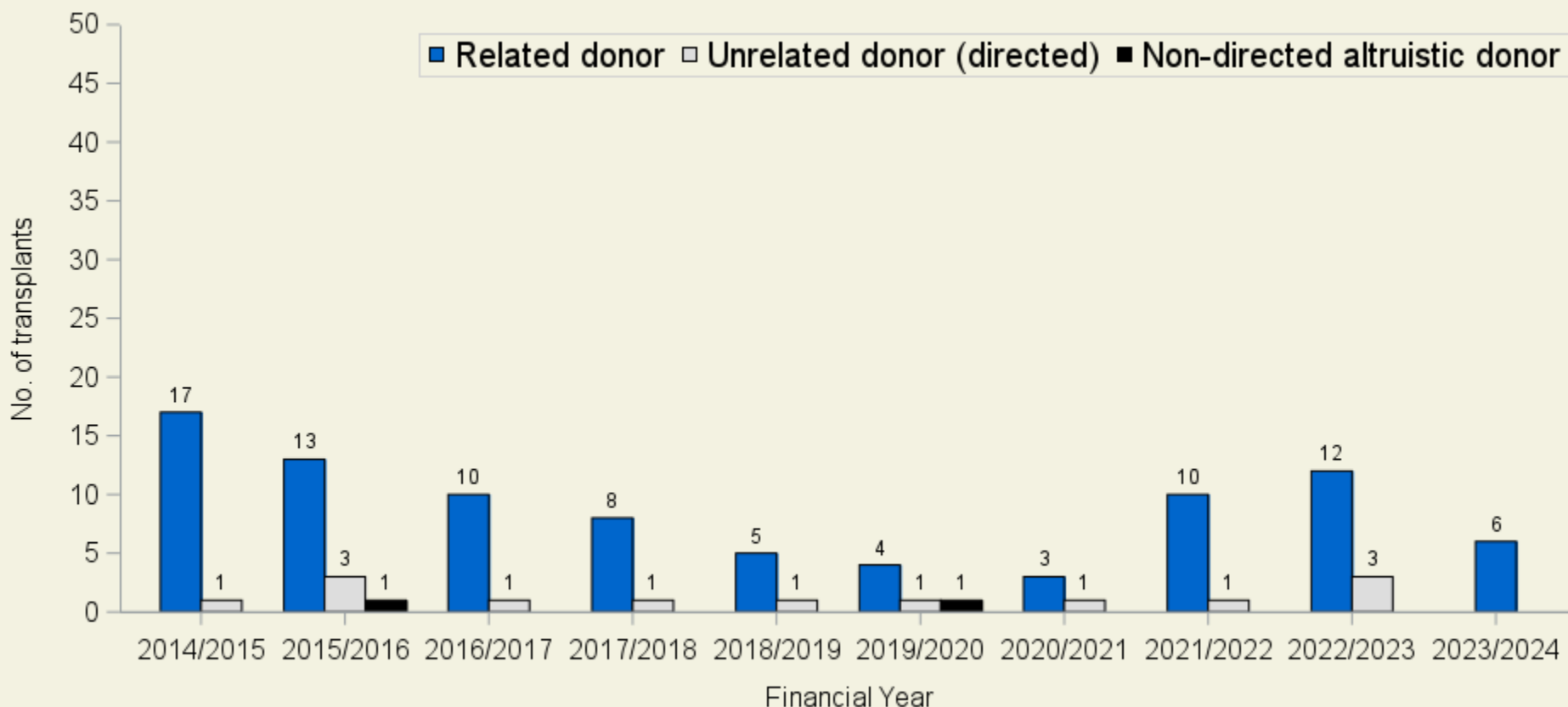


Median (range) donor to recipient age difference: -21 (-45,35) (ADULT)  
 +31(9,56) (PAEDIATRIC)

# Adult recipient activity



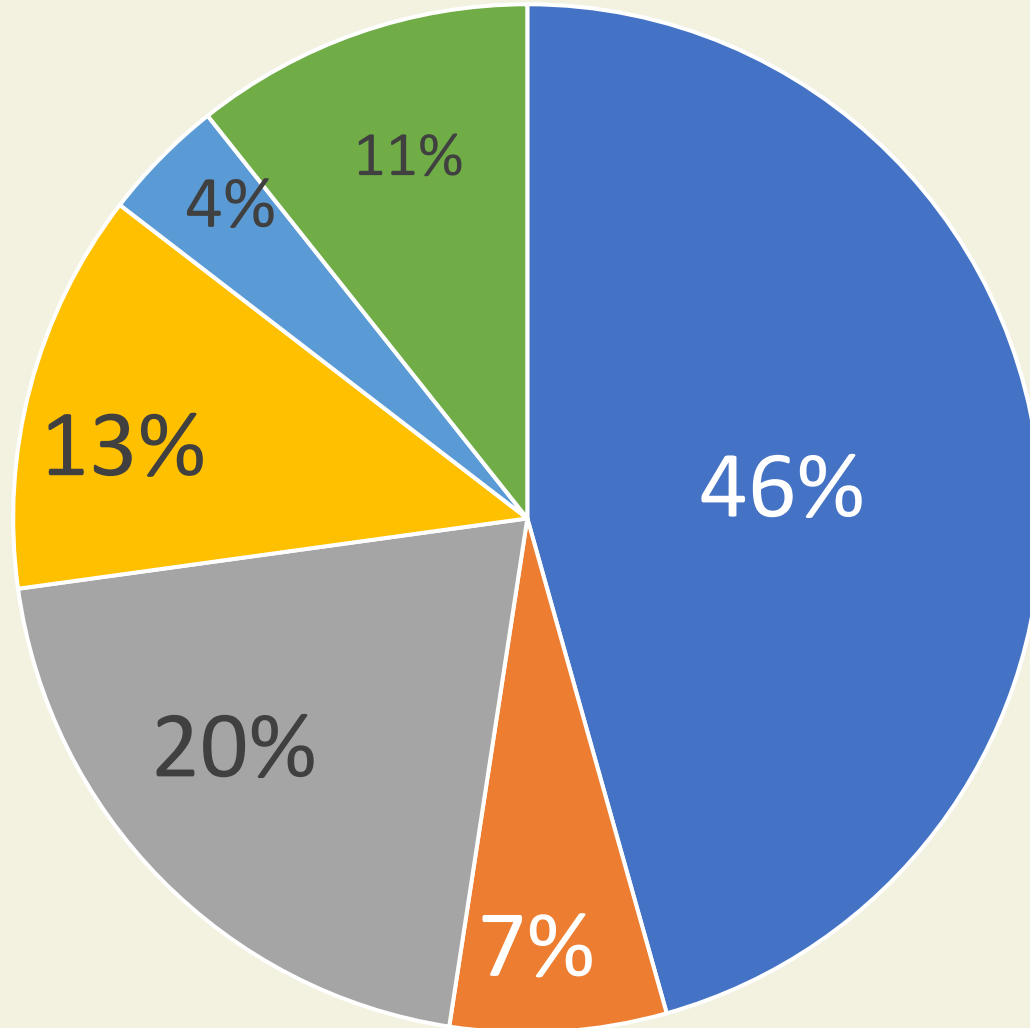
# UK adult living liver transplant activity



**103 living donor transplants**

- 101 (98%) directed
  - 88 (87%) related

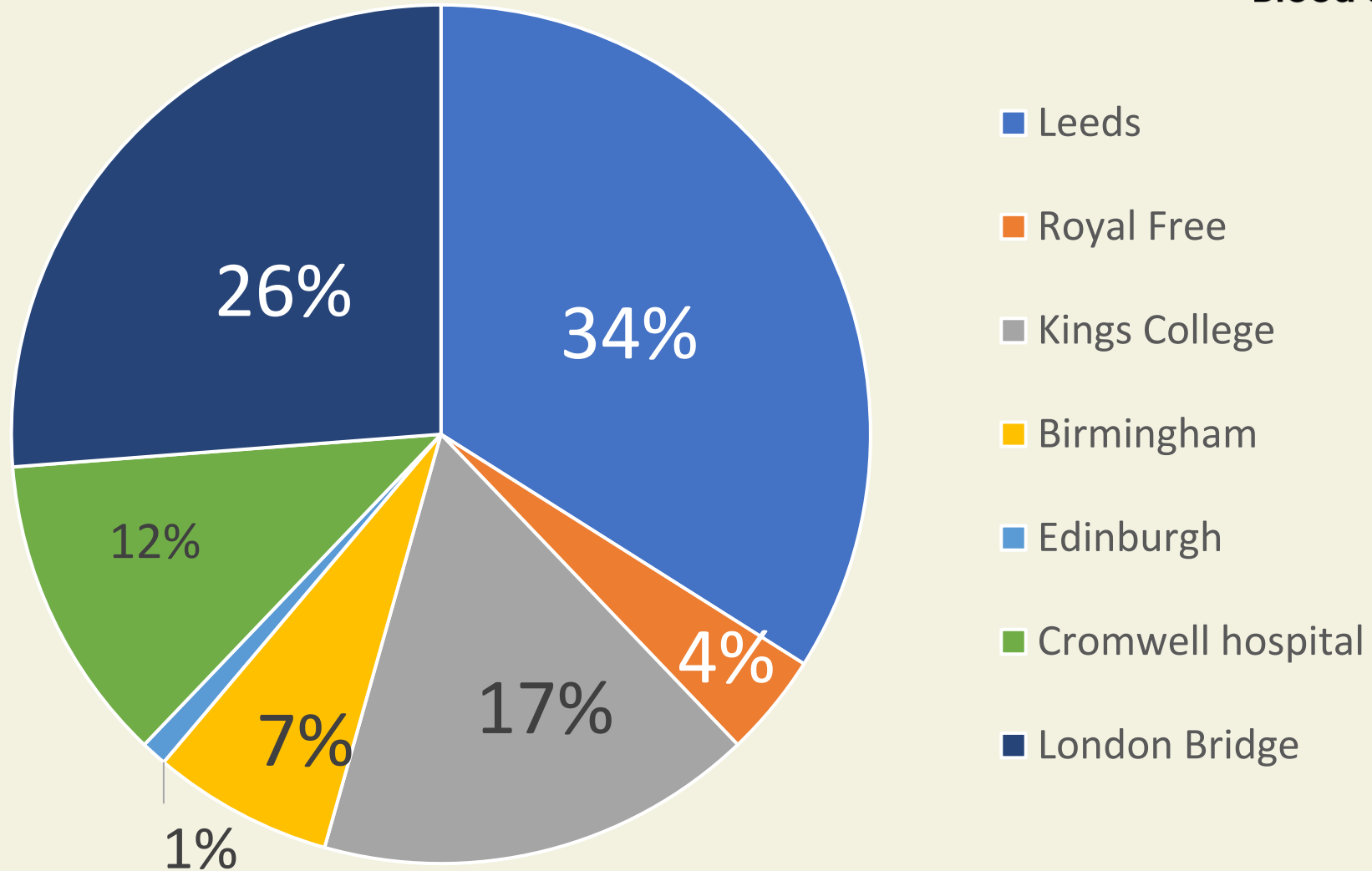
# Donor to recipient relationship



- Son or daughter
- Mother or father
- Sibling
- Other genetic relationship, please specify
- Spouse/ partner
- Other non-genetic relationship, please specify

88 (85%) had a genetic relationship with the recipient

# Transplant centre

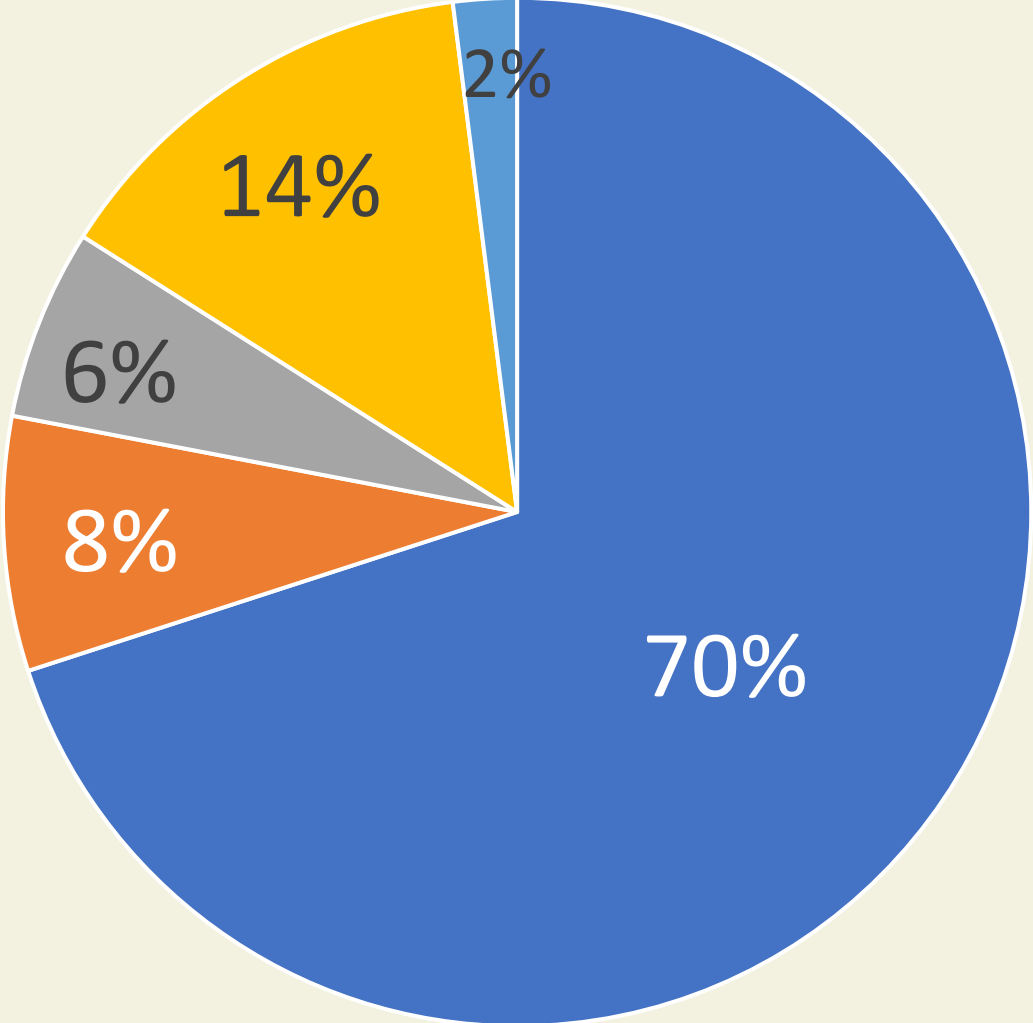


50 (49%) NHS Group 1 patients

# Transplant centre for NHS Group 1



Blood and Transplant



Leeds

Royal Free

Kings College

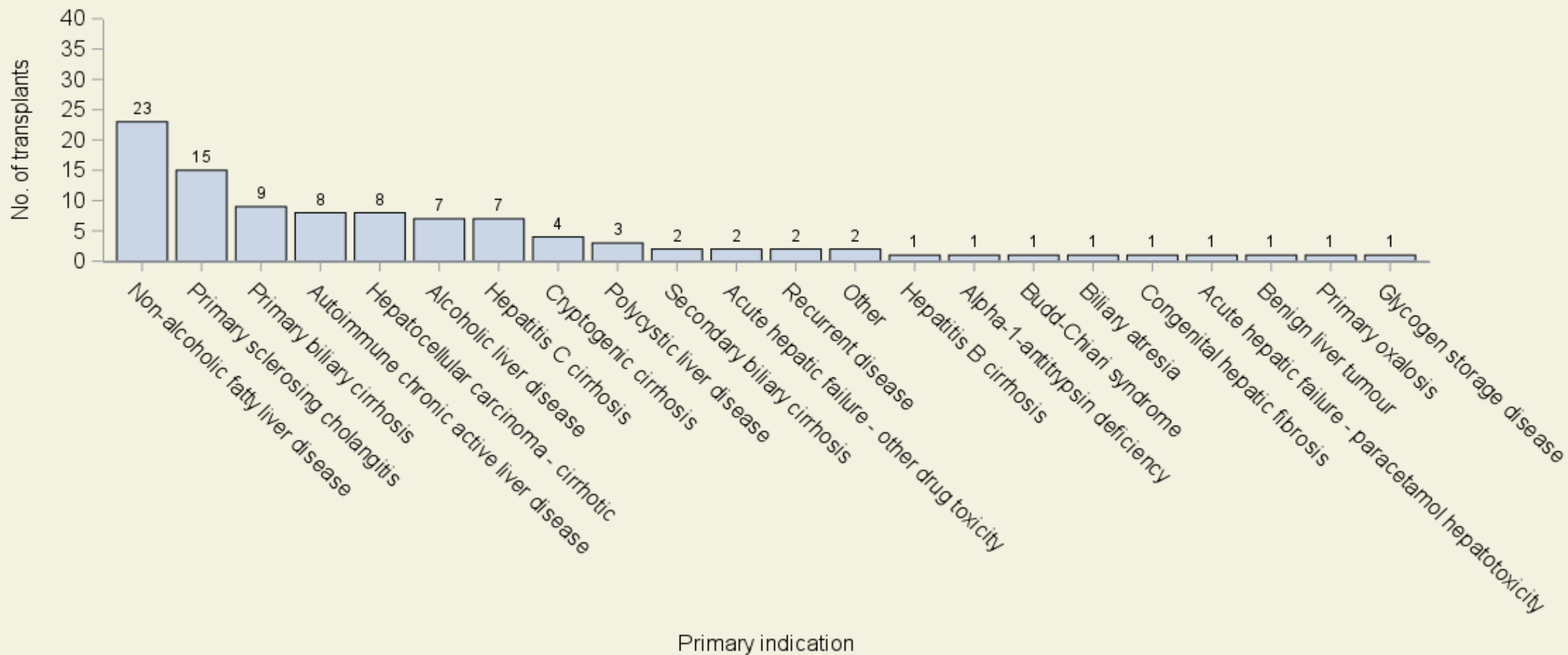
Birmingham

Edinburgh

35 (70%) performed at Leeds

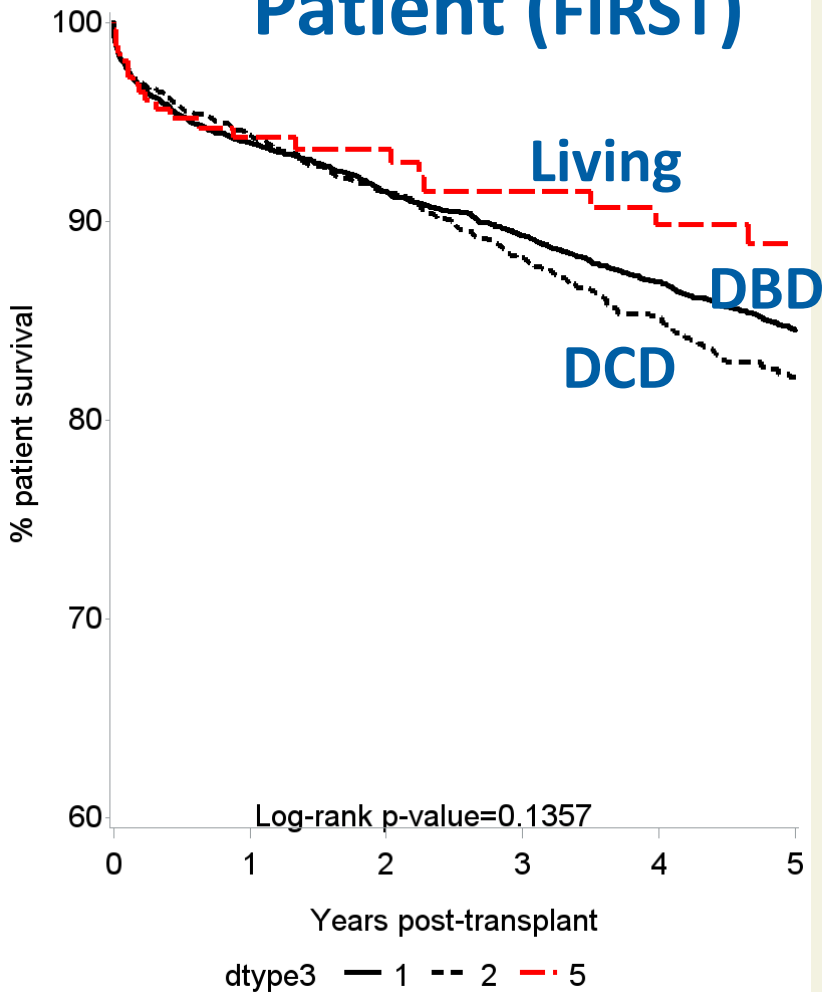
Caring Expert Quality

# Primary indication

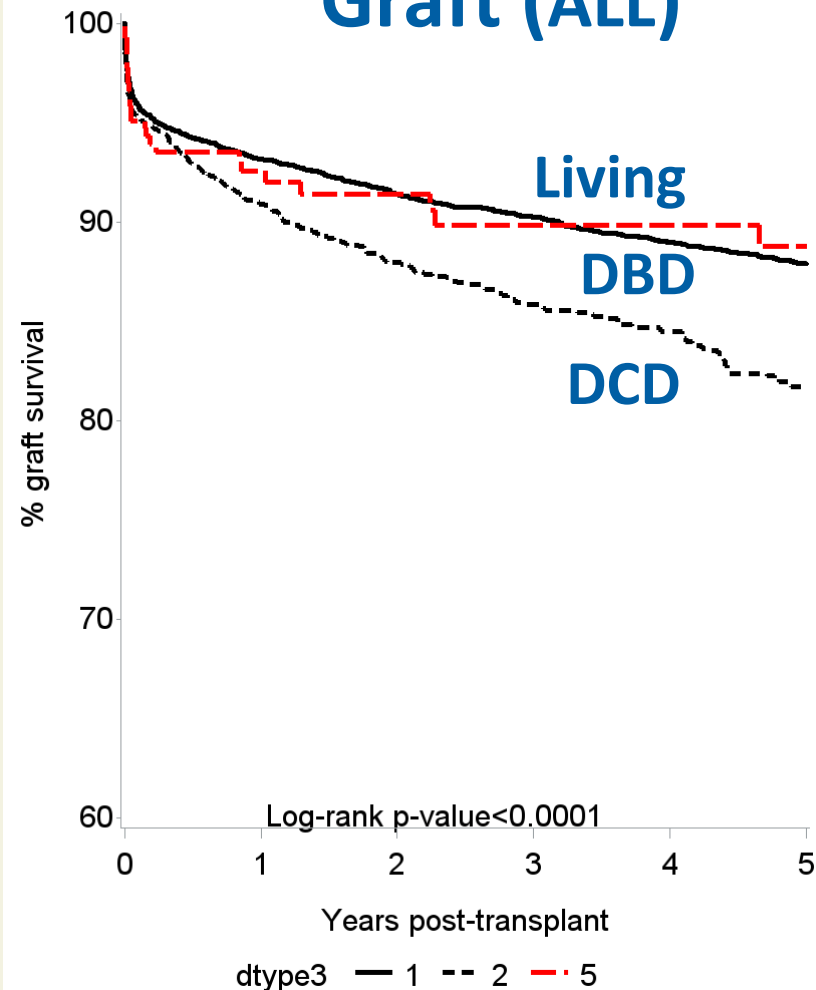


# 5 year survival post-transplant

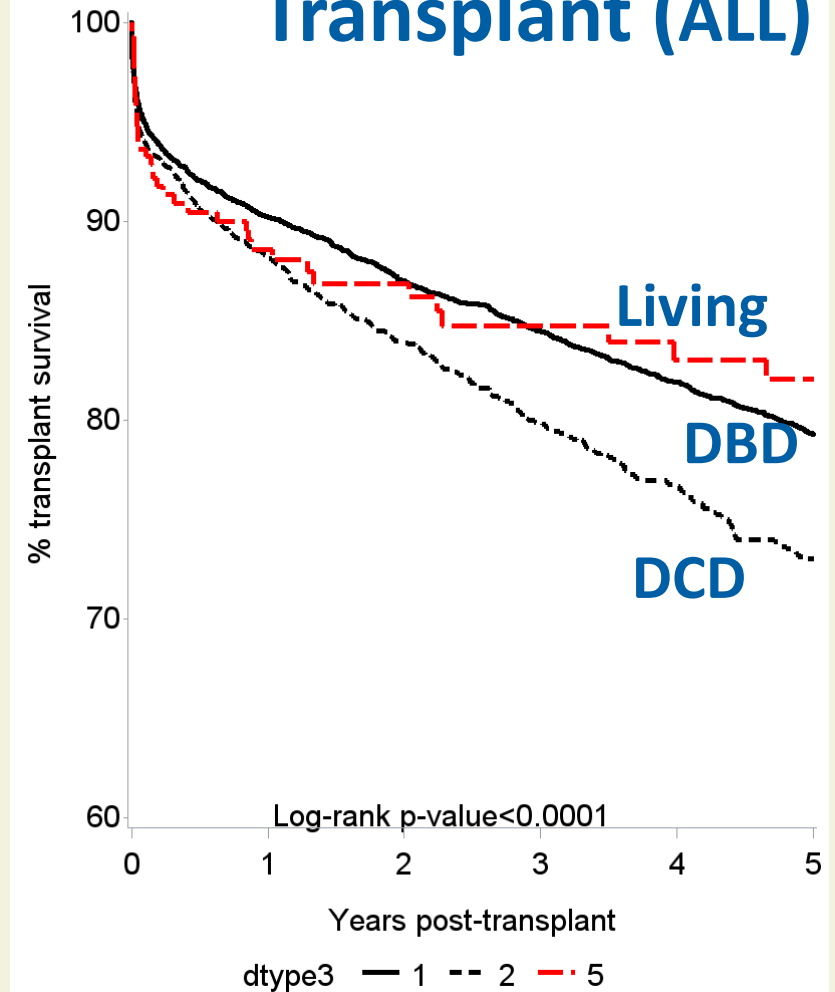
## Patient (FIRST)



## Graft (ALL)

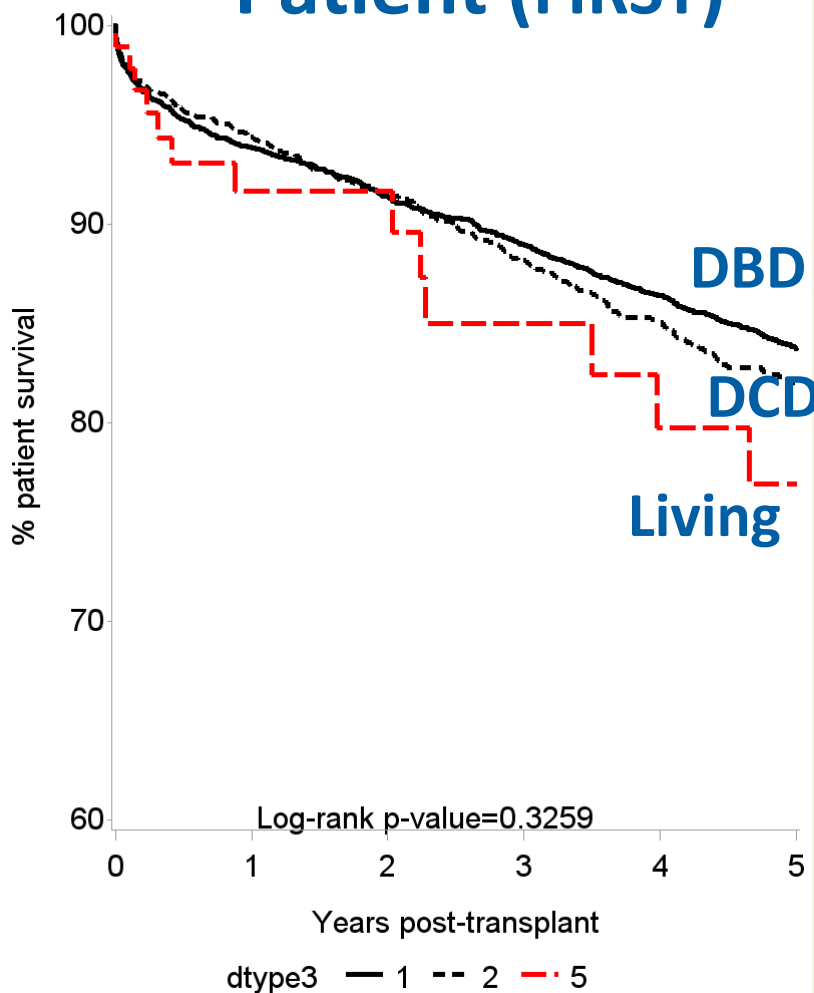


## Transplant (ALL)

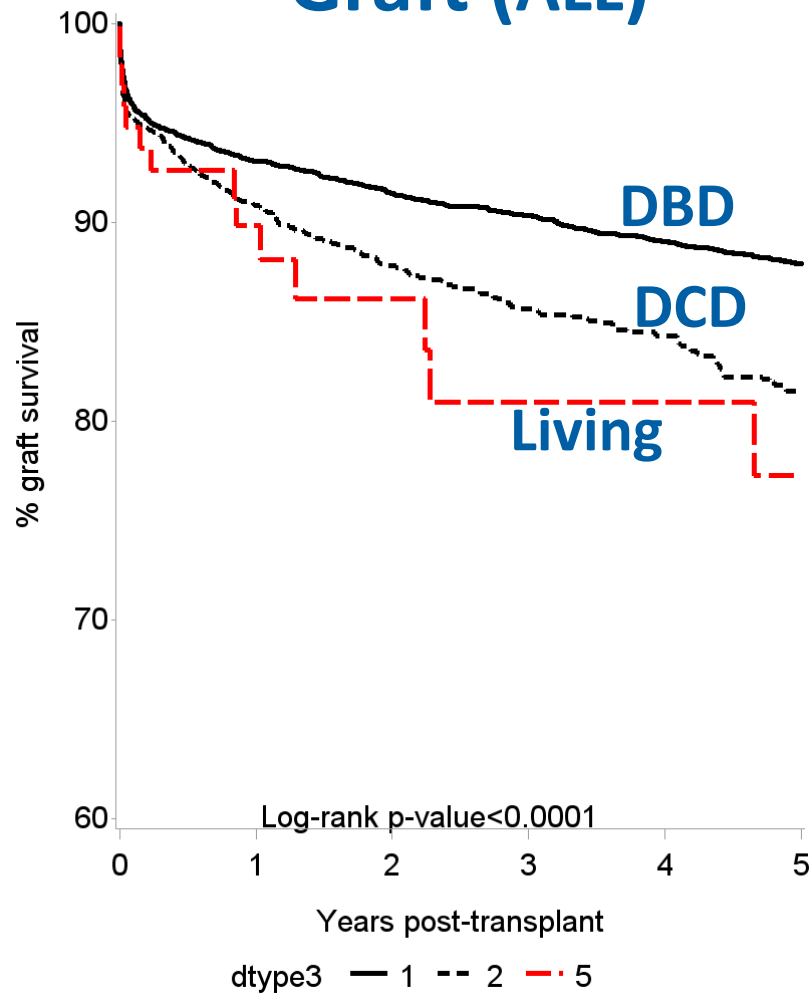


# 5 year survival post-transplant - ADULT

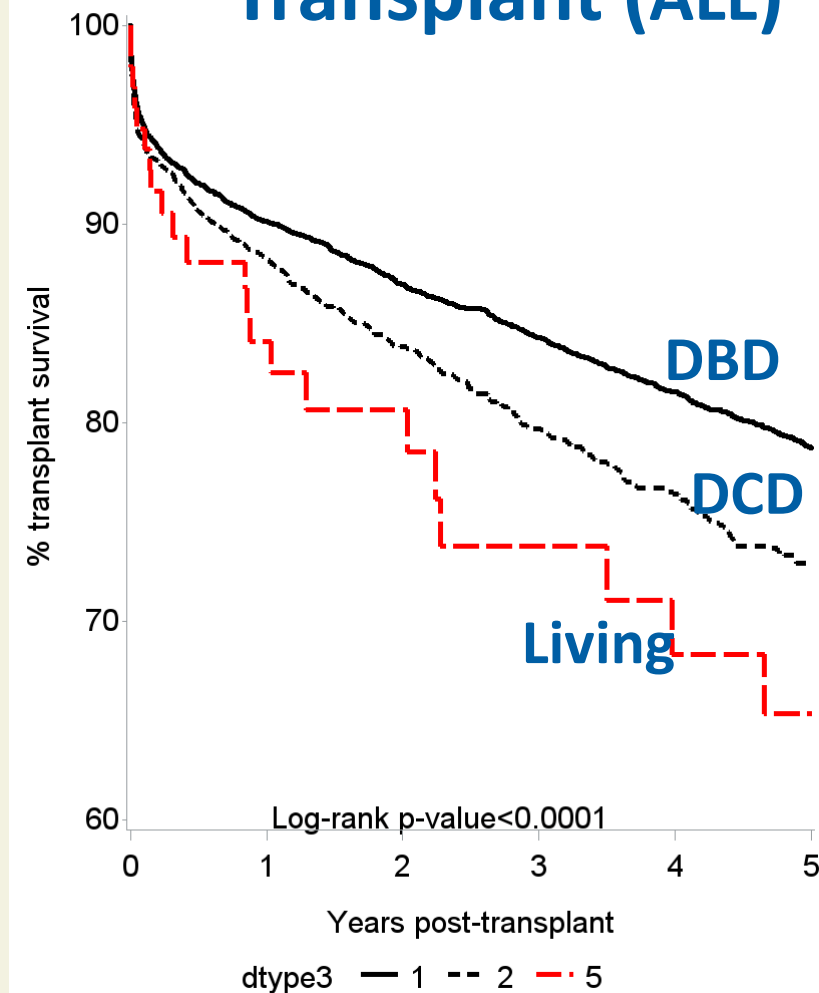
## Patient (FIRST)



## Graft (ALL)



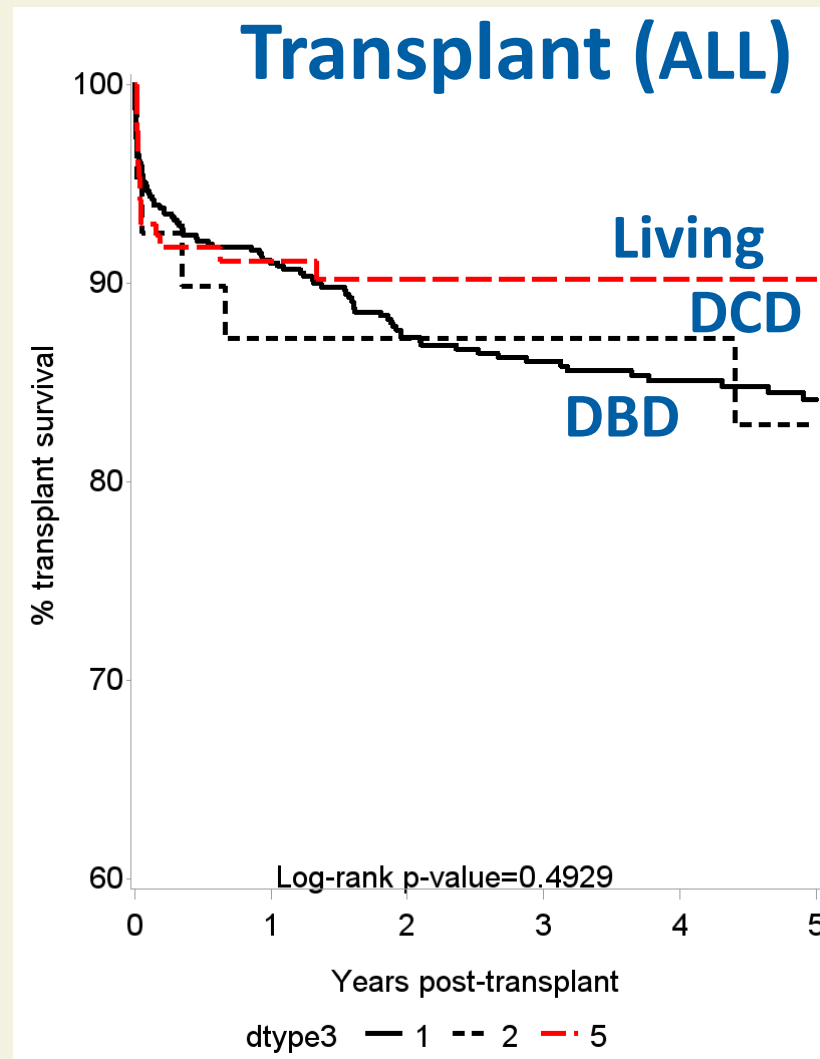
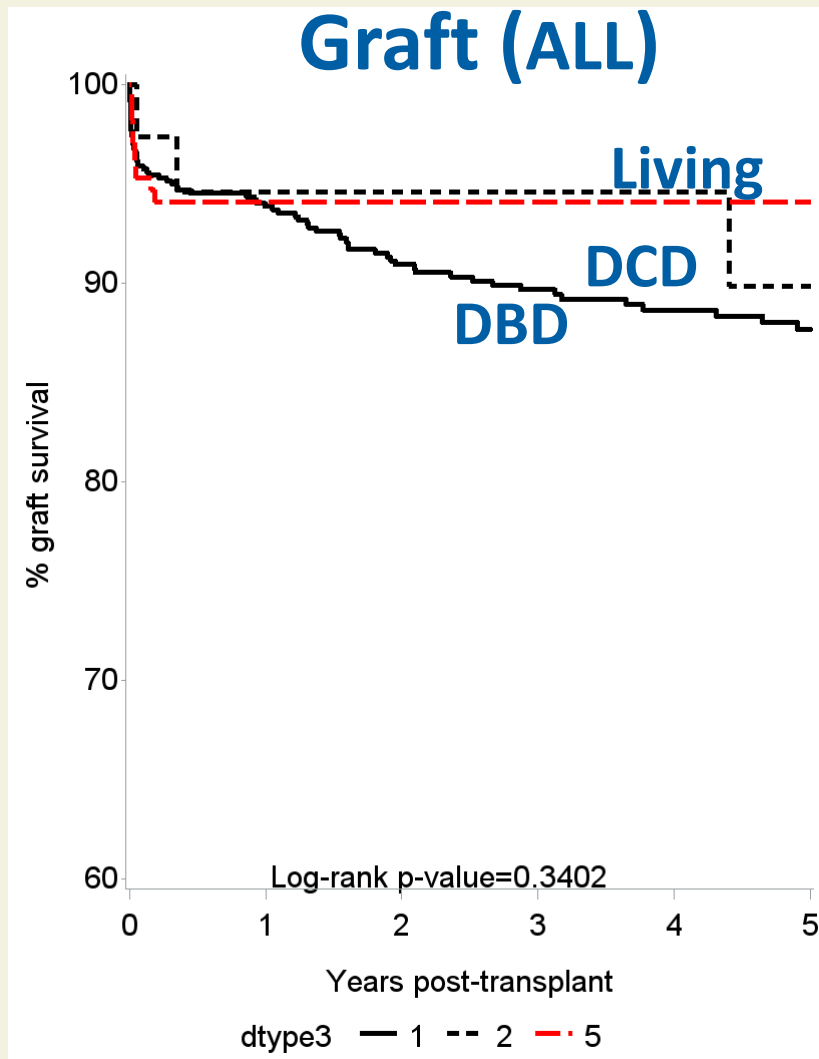
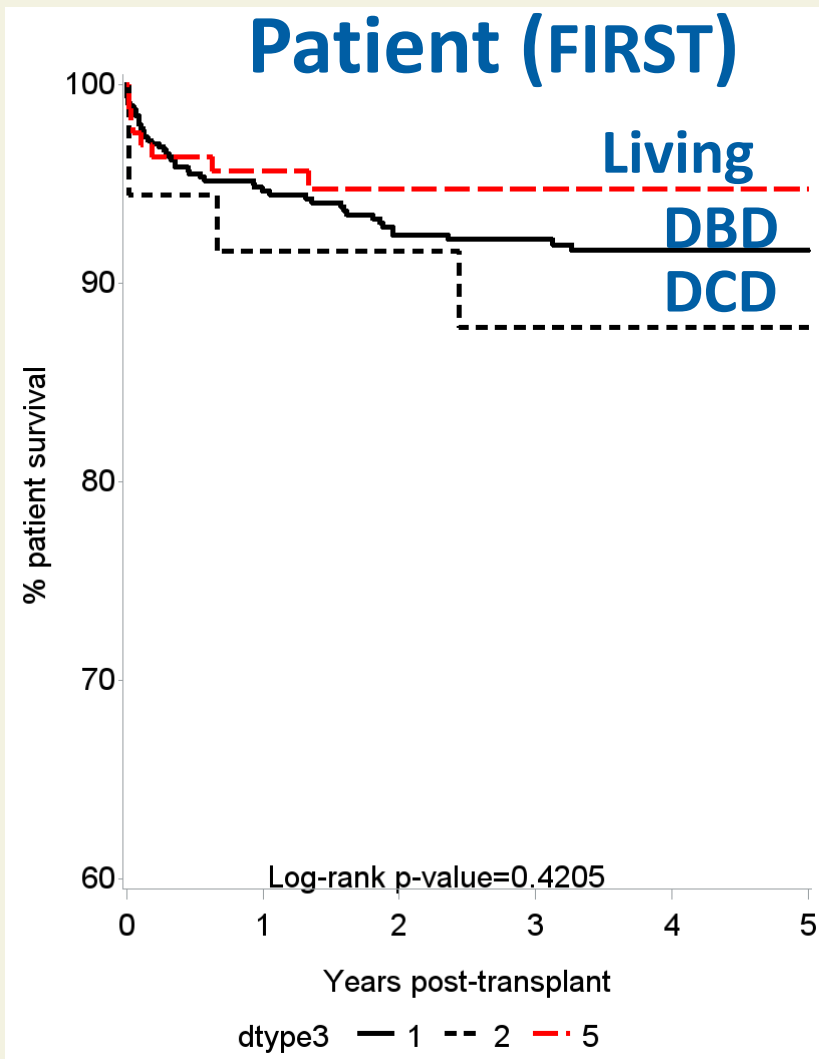
## Transplant (ALL)



# 5 year survival post-transplant - PAEDIATRIC



Blood and Transplant



Caring Expert Quality



# Non directed altruistic donors

## Non directed altruistic donors (N=15)

- 13 (87%) performed at Leeds, 1 (7%) at Kings and 1 (7%) at Birmingham
- 12 (80%) left lateral segment, 3 (20%) right lobes
- 13 (87%) elective, 2 (13%) super-urgent
- 13 paediatric (age range 0 to 12) and 2 adult recipients (41 and 71)
- 9 blood group identical and 6 compatible
- 8 recipients resident in North East and Yorkshire, 4 North West, 1 London and 1 Midlands
- Median (range) time on the elective list: 164 days (7, 586)

## Non directed altruistic donors (N=15)

- 10 patients alive with a functioning graft
- 5 patients relisted
  - 2 patients retransplanted (both 6 days post-transplant)
  - 2 patients removed from the list and alive with a functioning graft
  - 1 recipient death at 488 days post-transplant

# Outcome of donors

# *Living Liver Donor Pre- and Post-operative Assessment*

## Directions for completion

- 1 This four-page form should be completed for livers retrieved from living donors. Sections 1 and 2 should be completed at the time of the donor operation, and the retrieving surgeon should then sign it in the appropriate place, in order to comply with the Human Tissue Act (2004), the Human Tissue (Scotland) Act (2006) and the Quality and Safety of Organs Intended for Transplantation Regulations (2012), and a copy should then be faxed to ODT Hub: Information Services using the direct fax line 0117 975 7570 **within 7 days of the retrieval taking place.**
- 2 Sections 3-6 should be completed at the time of discharge of the donor.

NHSBT notified of transplant  
within 7 days of retrieval

# Resources

- LD annual follow-up form

UK TRANSPLANT REGISTRY

**NHS**  
*Blood and Transplant*

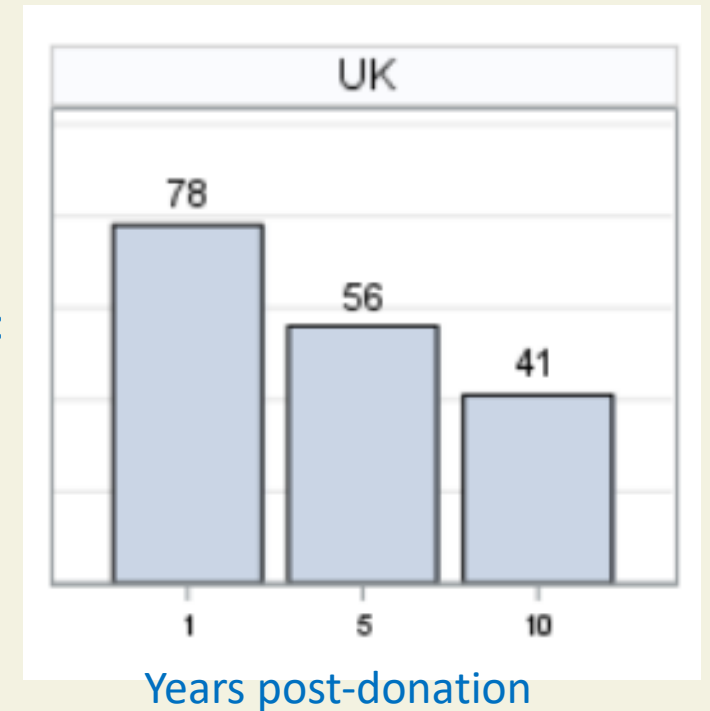
## ***Kidney LIVING DONOR ASSESSMENT FOLLOW-UP***

Where the donor is being followed up by their GP and not the transplant unit, the transplant unit is required to liaise with the GP in the completion of this form and its return to NHS Blood and Transplant.

Follow-up information for living kidney donors is requested by NHS Blood and Transplant one, two and five years after donation and then every five years thereafter.

Includes mortality, clinical data

Follow-up  
Return rates (%):



# Resources

- LD annual follow-up form
- Linkage with NHS SPINE for mortality data

# Resources

- LD annual follow-up form
- Linkage with NHS SPINE for mortality
- Donor Reported Outcome Measures - **DROMs**

UK TRANSPLANT REGISTRY NHS  
Blood and Transplant

---

## ***DONOR REPORTED OUTCOME MEASURES (DROMS) SURVEY***

**DONOR REPORTED OUTCOME MEASURES (DROMS) SURVEY**

Dear Donor,

We would be grateful if you could complete this short survey to help us understand more about your donation experience. Your information will be held by NHS Blood and Transplant in the UK Living Donor Registry to help monitor the wellbeing of kidney donors over time and also inform people who are considering donating a kidney about what to expect. Thank you for your support.

**Section 2**

**ABOUT YOUR DONATION (Please answer all questions unless indicated)**

- How would you rate your health on a scale of 1-10 where 1 is "very poor" and 10 is "excellent"?  
Please circle: 1 - 2 - 3 - 4 - 5 - 6 - 7 - 8 - 9 - 10      Don't know  Not applicable
- How would you rate your need to sleep on a scale of 1-10 where 1 is "almost all the time" and 10 is "as much as I expect"?  
Please circle: 1 - 2 - 3 - 4 - 5 - 6 - 7 - 8 - 9 - 10      Don't know  Not applicable
- How would you rate the way you feel about your eating on a scale of 1-10 where 1 is "poor" and 10 is "great"?  
Please circle: 1 - 2 - 3 - 4 - 5 - 6 - 7 - 8 - 9 - 10      Don't know  Not applicable
- Do you feel that your health has had a negative impact on your family or social life on a scale of 1-10 where 1 is "significant effect" and 10 is "not at all"?  
Please circle: 1 - 2 - 3 - 4 - 5 - 6 - 7 - 8 - 9 - 10      Don't know  Not applicable
- How positive are you about your future on a scale of 1-10 where 1 is "not at all" and 10 is "very positive"?  
Please circle: 1 - 2 - 3 - 4 - 5 - 6 - 7 - 8 - 9 - 10      Don't know  Not applicable
- Overall, what do people in your life think of you related to your decision to donate, on a scale of 1-10 where 1 is "they think very poorly of me" and 10 is "they think very highly of me"?  
Please circle: 1 - 2 - 3 - 4 - 5 - 6 - 7 - 8 - 9 - 10      Don't know  Not applicable
- What is your view of your body image on a scale of 1-10 where 1 is "poor" and 10 is "excellent"?  
Please circle: 1 - 2 - 3 - 4 - 5 - 6 - 7 - 8 - 9 - 10      Don't know  Not applicable
- What is your partner's perception (if applicable) of your body image on a scale of 1-10 where 1 is "poor" and 10 is "excellent"?  
Please circle: 1 - 2 - 3 - 4 - 5 - 6 - 7 - 8 - 9 - 10      Don't know  Not applicable



# Resources

- LD annual follow-up form
- Linkage with NHS SPINE for mo
- Donor Reported Outcome Measures - DROMS
- Donor Reported Experience Measures - **DREMs**

UK TRANSPLANT REGISTRY NHS  
Blood and Transplant

---

## ***DONOR REPORTED EXPERIENCE MEASURES (DREMS) SURVEY***

Please return data to ODT Hub:  
Information Services along with  
Kidney Living Donor  
Assessment Follow-Up  
(FRM4191) form as appropriate.  
Data will be collected at 1 year  
post donation.

DONOR REPORTED EXPERIENCE MEASURES (DREMS) SURVEY

Section 6

**GENERAL FEEDBACK**

1. Was the donation process as you expected?  
Yes  No   
If no, please comment on why the process was not as you expected it to be

2. Overall, how would you rate the care and support you received from your care team at each of the following stages?

a) Pre-donation  
Please circle: Very poor 1 - 2 - 3 - 4 - 5 - 6 - 7 - 8 - 9 - 10 Excellent Don't know  Not applicable

b) Assessment  
Please circle: Very poor 1 - 2 - 3 - 4 - 5 - 6 - 7 - 8 - 9 - 10 Excellent Don't know  Not applicable

c) Hospital stays  
Please circle: Very poor 1 - 2 - 3 - 4 - 5 - 6 - 7 - 8 - 9 - 10 Excellent Don't know  Not applicable

d) Within 0-3 months of donation  
Please circle: Very poor 1 - 2 - 3 - 4 - 5 - 6 - 7 - 8 - 9 - 10 Excellent Don't know  Not applicable

e) Between 4-12 months post-donation  
Please circle: Very poor 1 - 2 - 3 - 4 - 5 - 6 - 7 - 8 - 9 - 10 Excellent Don't know  Not applicable

3. How would you rate your overall donation experience?  
Please circle: Very poor 1 - 2 - 3 - 4 - 5 - 6 - 7 - 8 - 9 - 10 Excellent Don't know  Not applicable

4. Do you have any suggestions that could have improved your living donation experience?

# Development of DROMs and DREMs

Forms developed by members of the donor safety and welfare workstream on behalf of the LDKT 2020 Strategy Implementation Group

|                | <b>Donor Reported Outcome Measures (DROMs)</b>                                  | <b>Donor Reported Experience Measures (DREMs)</b>                      |
|----------------|---|--|
| Development by | LDKT Strategy Implementation Sub-group, Vassilios Papalois, Maria Thedosopoulou | LDKT Strategy Implementation Sub-group, Janine Hawkins, David Wellsted |
| Forms live     | 2019  | 2020   |
| Collected at   | Pre-donation, 1 and 5 years post-donation                                       | 1 year post-donation   |

# DROMs and DREMs data collection

- Paper forms
- Rely on centres to give to donors to complete, with forms returned via the centres
- Completed forms entered on to a spreadsheet by OTDT Hub Information Services and linked to UK Transplant Registry by Statistics team
- Returns: DROMs at 1 year - 371 (17%)

DREMs - 486 (23%)

# Online Resources

## ODT CLINICAL

Home

Deceased  
donation

Living donation

Retrieval

Transplantation

Statistics and  
reports

[Home](#) / [Living donation](#) / UK Living Donor Liver Transplantation Network

# UK Living Donor Liver Transplantation Network

The UK Living Donor Liver Transplantation (LDLT) Network was established to support the expansion of the UK programme and equity of access to living donor liver transplantation for both adults and children, across all four UK countries.

The Network aims to engage all members of the multi-disciplinary teams, in transplant and non-transplant (referring) centres, to promote best practice in living donor liver transplantation.

[You can access the Terms of Reference \(ToR\) here \(PDF 242KB\)](#) 

<https://www.odt.nhs.uk/living-donation/uk-living-donor-liver-transplantation-network/>

Caring Expert Quality

# Online resources – Reports



## Blood and Transplant

ODT CLINICAL

Your search here

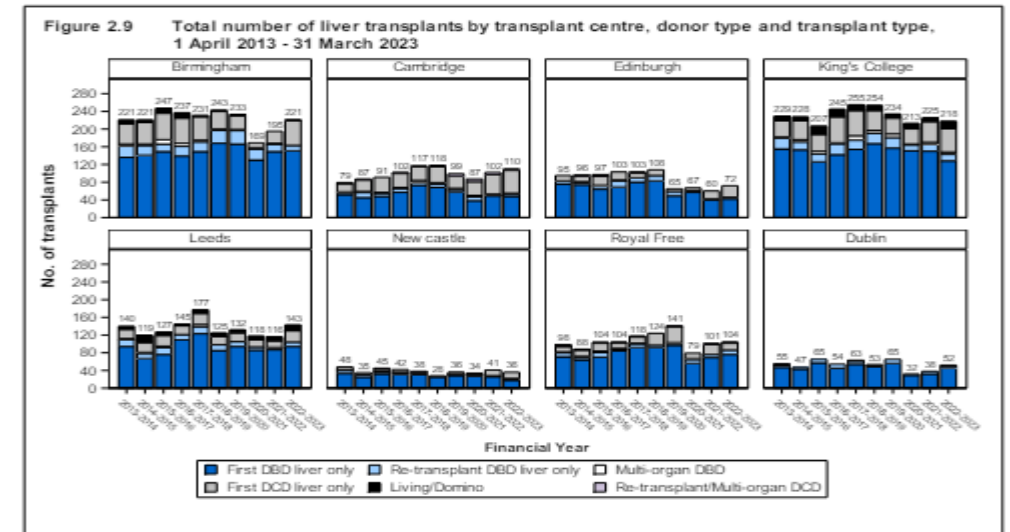
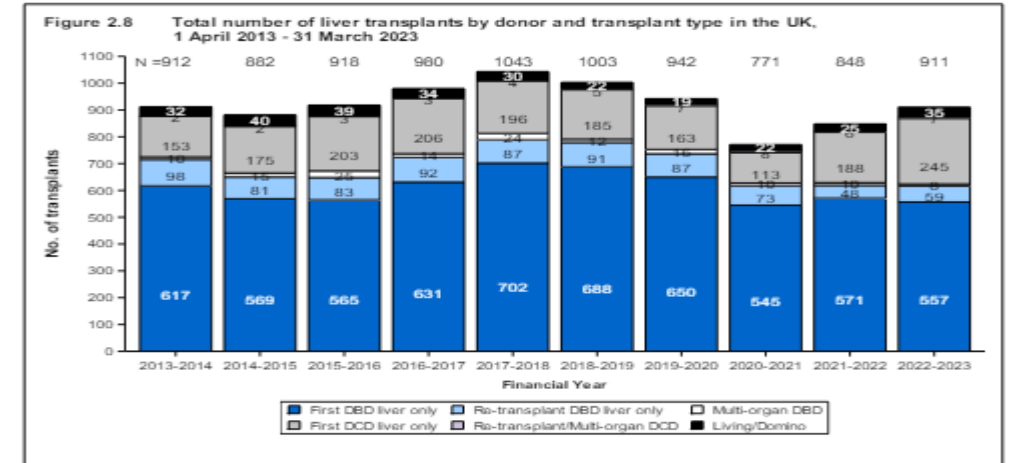
Home Deceased donation Living donation Retrieval Transplantation Statistics and reports Information for patients

Home / Statistics and reports

### Statistics and reports

Downloadable statistics and information about accessing further data and resources

These pages contain all the latest reports and presentations from the Statistics team at NHS Blood and Transplant including the Annual Activity Report, Organ Specific Reports and Performance Reports. You will find links to these pages from other areas of the website, but all reports are collated here for ease of reference. We also retain archived reports so that historic data are available.



<https://www.odt.nhs.uk/statistics-and-reports/>

Caring Expert Quality

# Acknowledgements



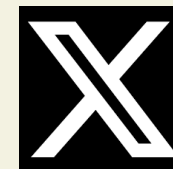
Blood and Transplant

- Statistics and Clinical Research
  - Maria Jacobs
  - Suzie Phillips
  - Rhiannon Wallis
- OTDT Hub Information Services
  - Matt Secker
- Lisa Burnapp

Transplant unit and other hospital staff, Specialist Nurses for Organ Donation, and OTDT HUB team for provision of data to the UK Transplant Registry



**Yes I donate**  
ORGAN DONATION



@NHSBT\_Stats

[www.odt.nhs.uk](http://www.odt.nhs.uk)

Caring Expert Quality