

DONATION AND TRANSPLANTATION MONTHLY ACTIVITY REPORT - FEBRUARY 2014

ACTIVITY IN THE UK OVER THE LAST TWO FINANCIAL YEARS

ORGAN DONORS

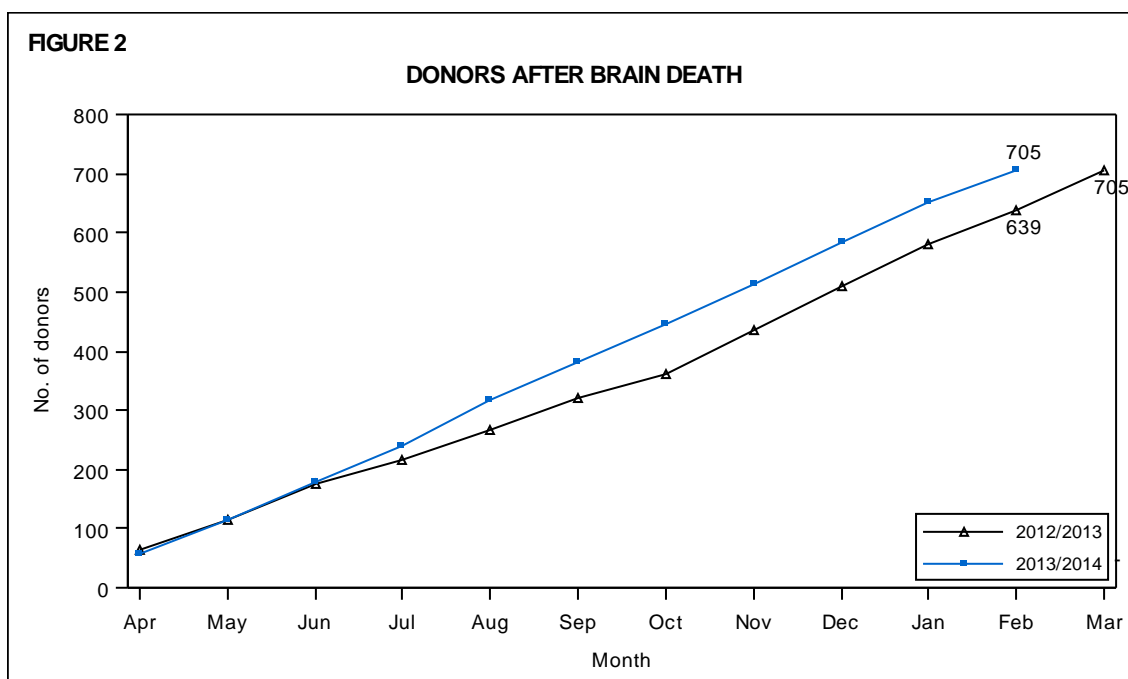
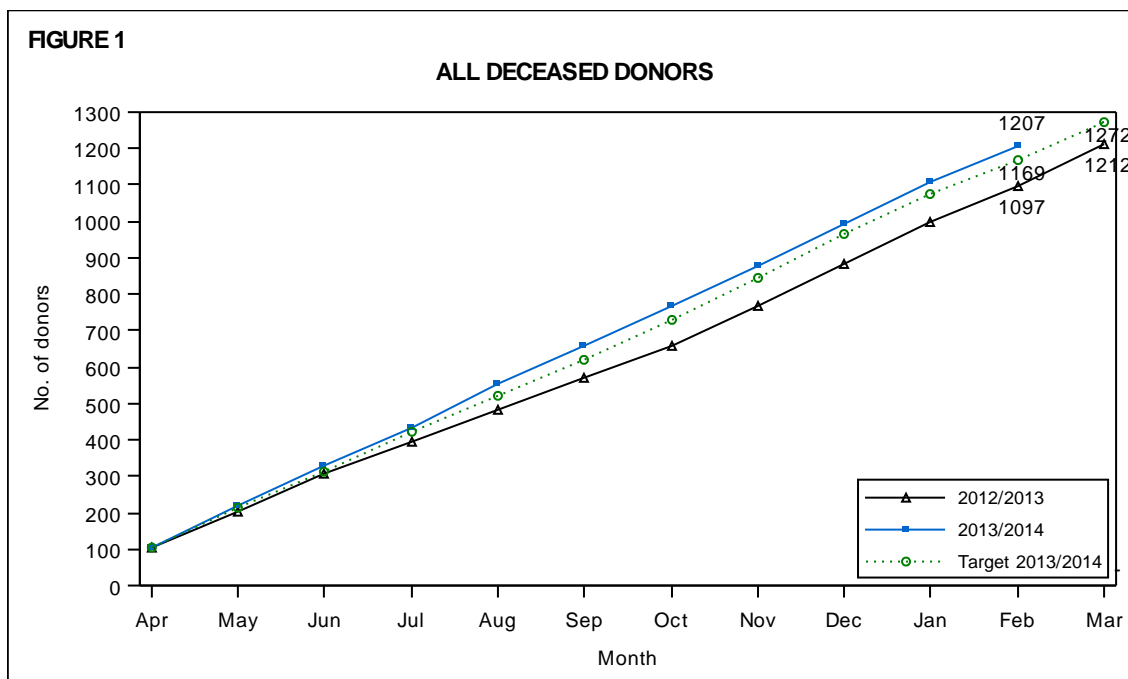
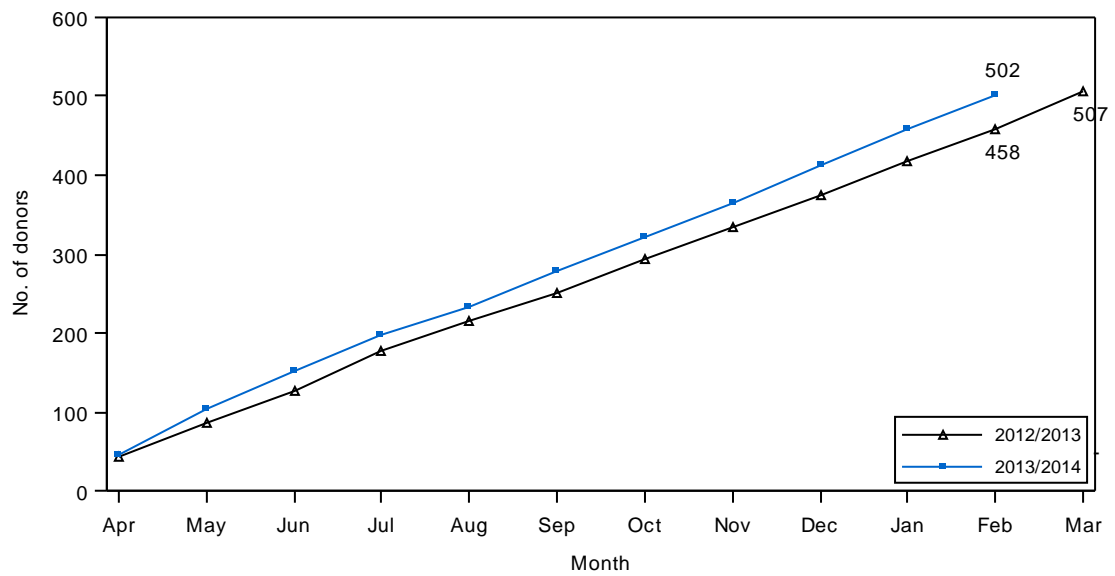
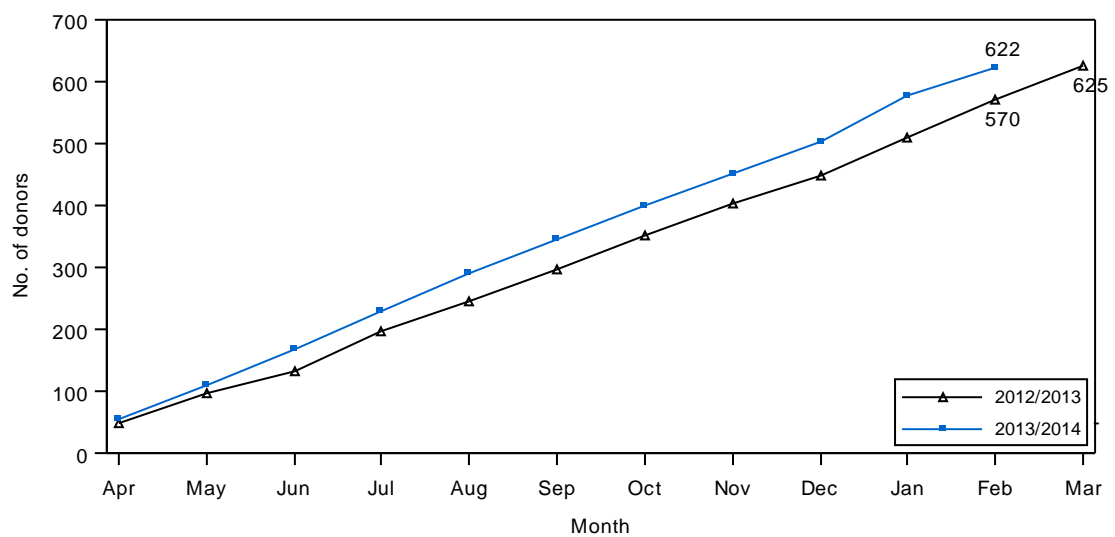
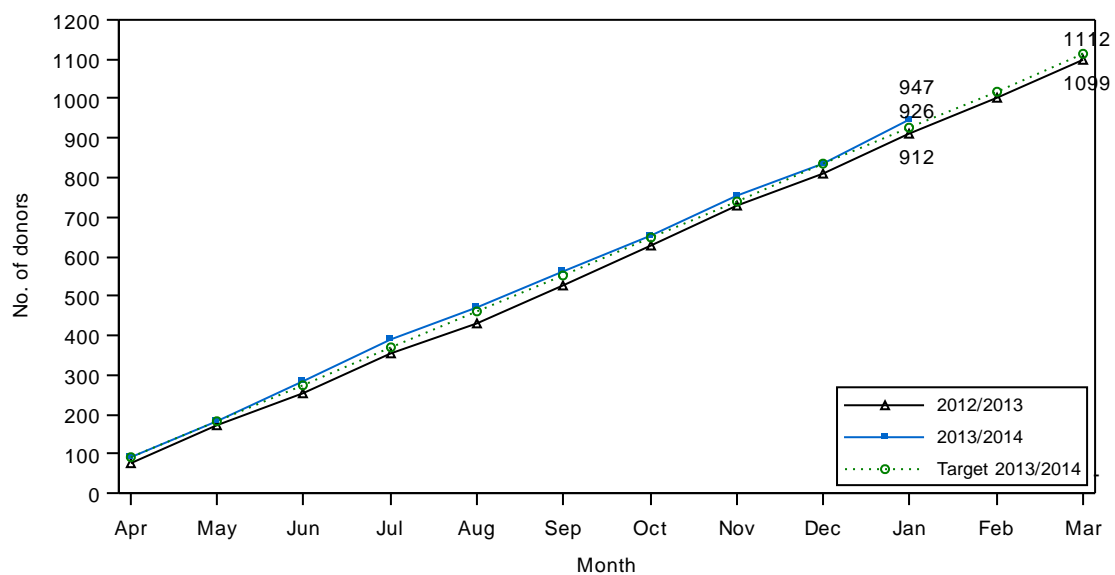
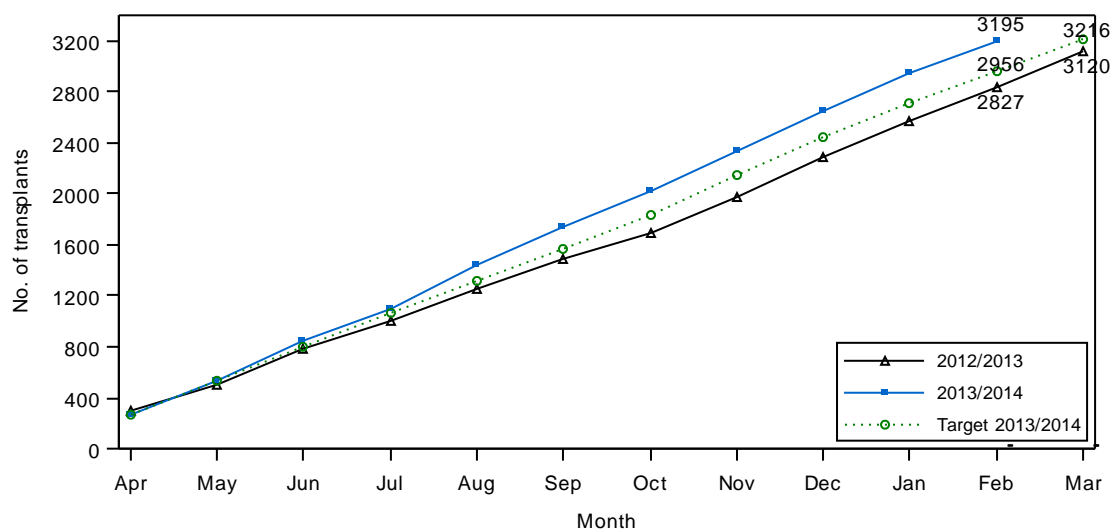
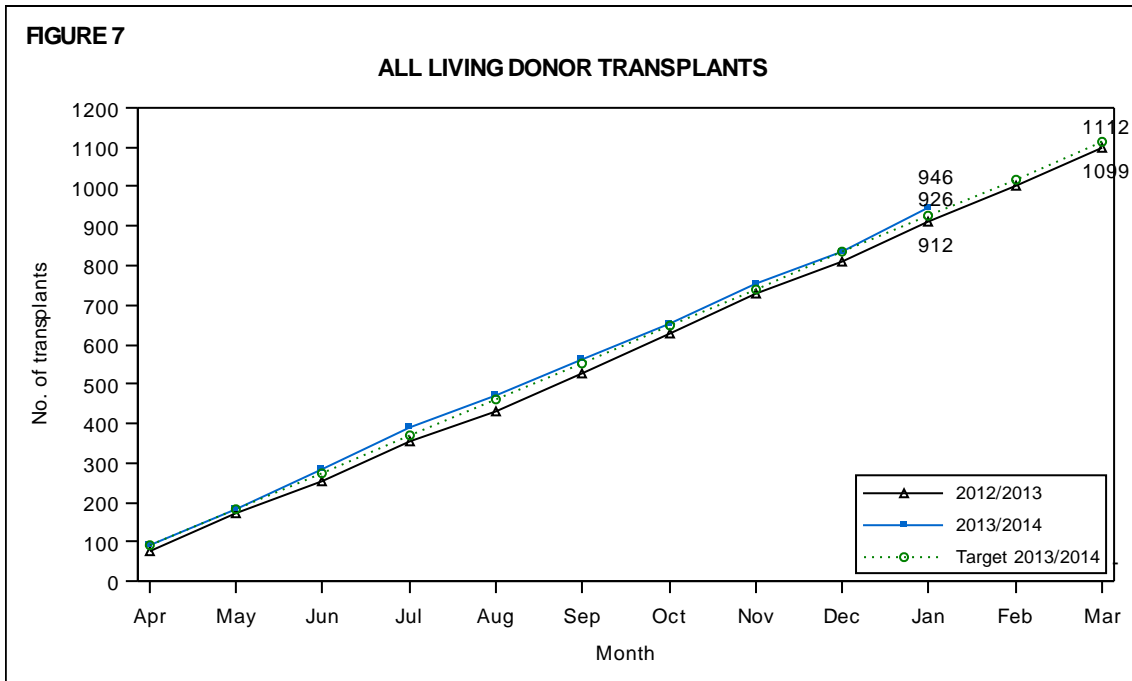


FIGURE 3**DONORS AFTER CIRCULATORY DEATH****FIGURE 4****NON-PROCEEDING DECEASED DONORS**

Non-proceeding donors defined as: Consent for donation obtained, but no organs were retrieved.

FIGURE 5**LIVING DONORS****ALL ORGAN TRANSPLANTS****FIGURE 6****ALL DECEASED DONOR TRANSPLANTS**

Includes 'domino' donor heart and liver transplants



ABDOMINAL ORGAN TRANSPLANTS

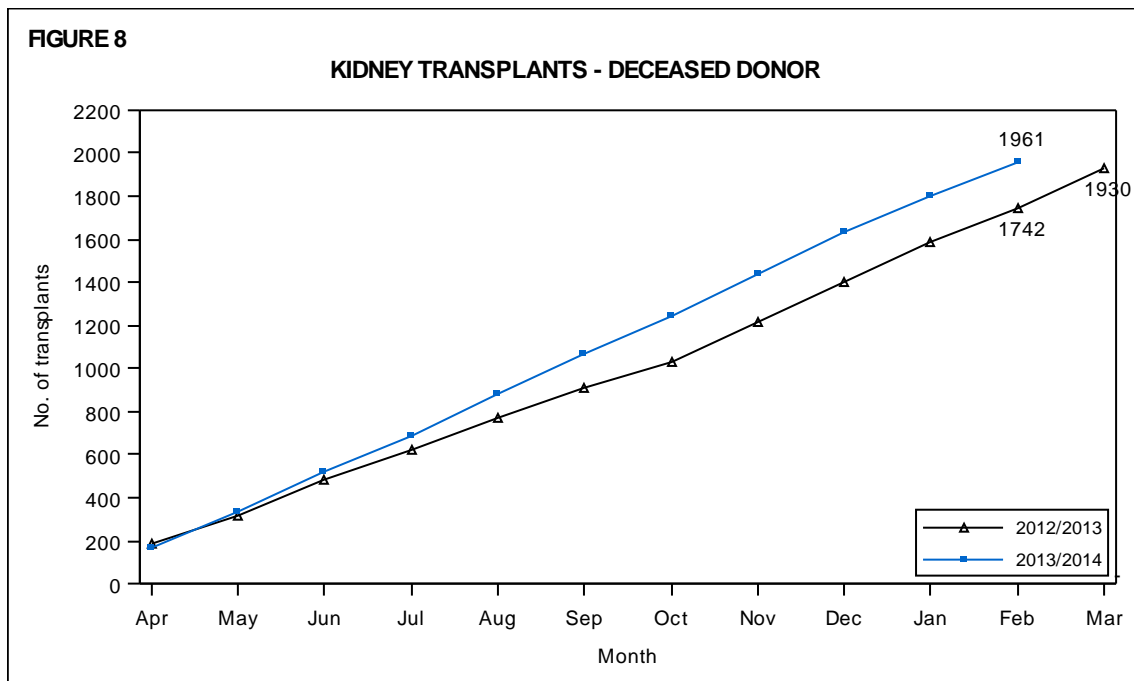
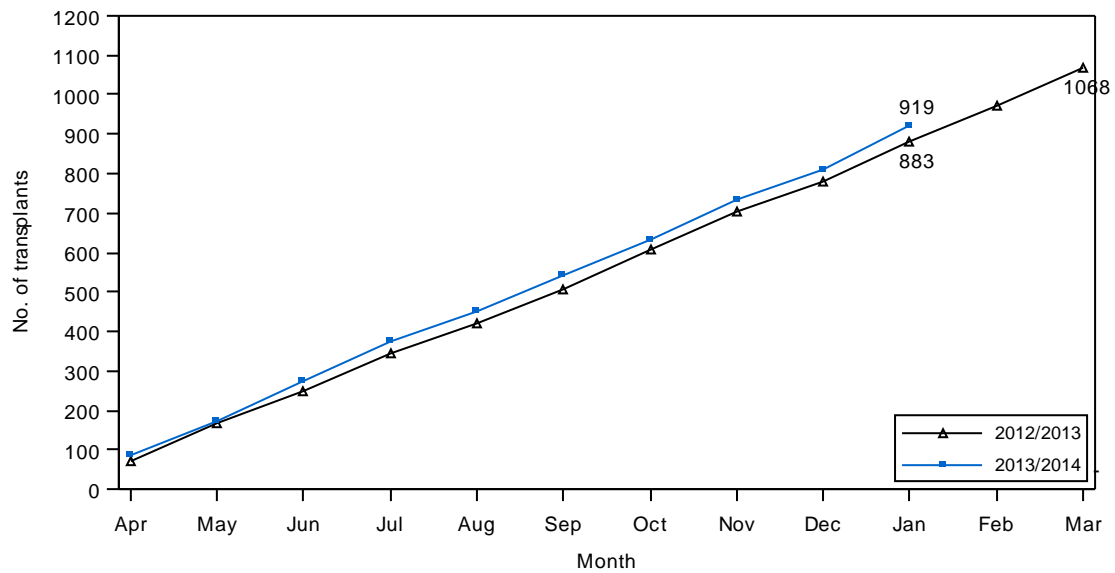
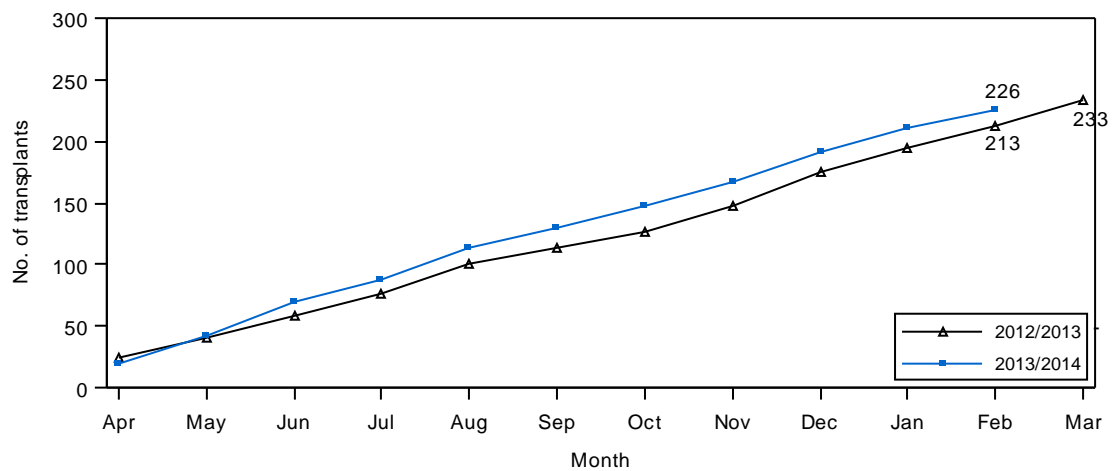


FIGURE 9**KIDNEY TRANSPLANTS - LIVING DONOR****FIGURE 10****PANCREAS TRANSPLANTS (ISOLATED, KIDNEY/PANCREAS AND ISLETS) - DECEASED DONOR**

This includes 60 pancreas islet transplants:

2012/2013: Apr (3), May (4), Jun (2), Jul (4), Aug (1), Sep (3), Oct (4), Nov (3), Dec (3), Jan (0), Feb (1), Mar (2)

2013/2014: Apr (4), May (3), Jun (4), Jul (2), Aug (3), Sep (1), Oct (4), Nov (2), Dec (3), Jan (3), Feb (1)

FIGURE 11

LIVER TRANSPLANTS - DECEASED DONOR

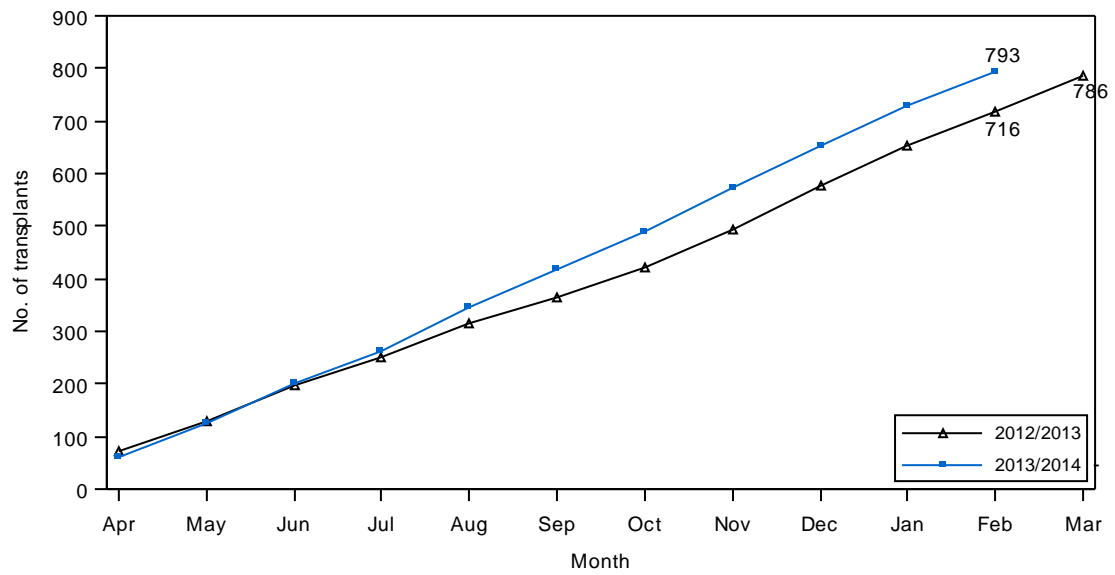
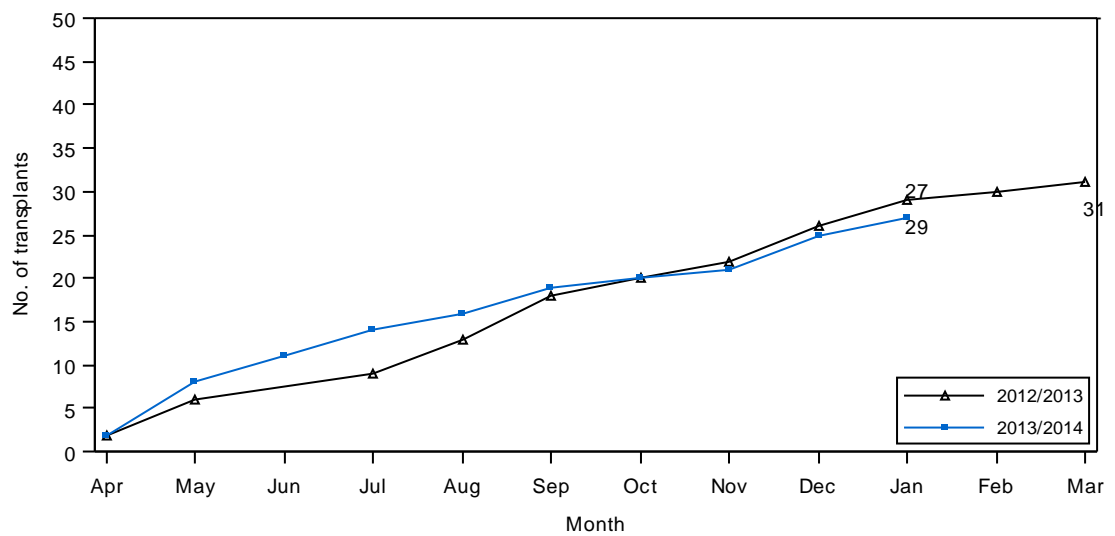
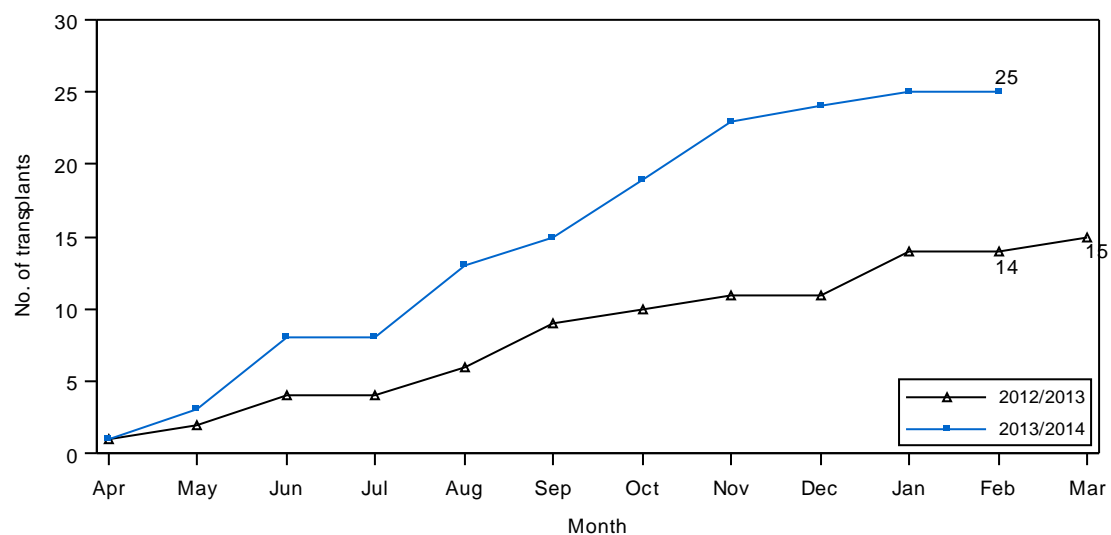


FIGURE 12

LIVER TRANSPLANTS - LIVING DONOR



Includes 'domino' donor transplants

FIGURE 13**INTESTINAL TRANSPLANTS - DECEASED DONOR**

Includes 1 liver only transplants for intestinal failure

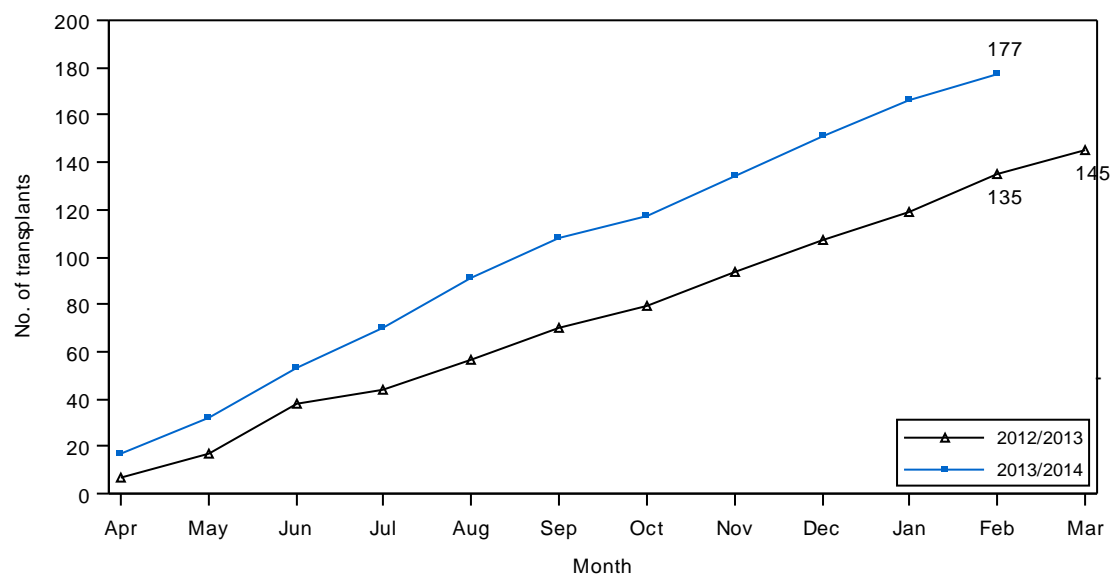
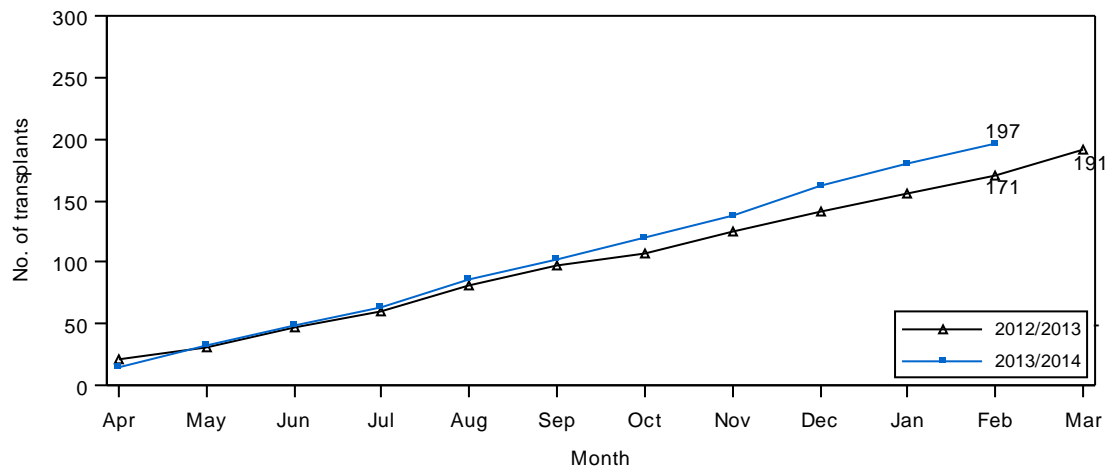
CARDIOTHORACIC ORGAN TRANSPLANTS**FIGURE 14****HEART TRANSPLANTS - DECEASED DONOR**

FIGURE 15**LUNG (including HEART/LUNG) TRANSPLANTS - DECEASED DONOR**

This includes 67 lung transplants from DCD donors:

2012/2013: Apr (5), May (0), Jun (3), Jul (3), Aug (4), Sep (2), Oct (1), Nov (2), Dec (4), Jan (2), Feb (3), Mar (5)

2013/2014: Apr (4), May (6), Jun (0), Jul (1), Aug (2), Sep (3), Oct (5), Nov (2), Dec (5), Jan (2), Feb (3)

CORNEA ACTIVITY

Activity as reported to the UK Transplant Registry by CTS eye banks and Moorfields and East Grinstead eye banks, but this will not be the complete UK activity.

FIGURE 16**CORNEA DONORS (ALL DONOR TYPES)**