

A thick blue wavy line that starts on the left, dips down, and then rises towards the right, spanning across the top half of the slide.

Recipient and Living Donor Coordinator Induction 2023

Facilitated by

Laura Stamp (Lead Nurse Recipient Coordinator, NHSBT)

Lisa Burnapp (Associate Medical Director, NHSBT)

Jen Lumsdaine (Living Donation Scotland)

Caring Expert Quality

NHSBT, the Organisation

Who, What, Why?



A Journey....

<https://www.odt.nhs.uk/deceased-donation/education-and-training/>

<https://www.youtube.com/watch?v=Er02SQXBNG0>

Who we are today

Employment of SNs

Donor characterisation

Organ procurement

Organ offering and allocation schemes

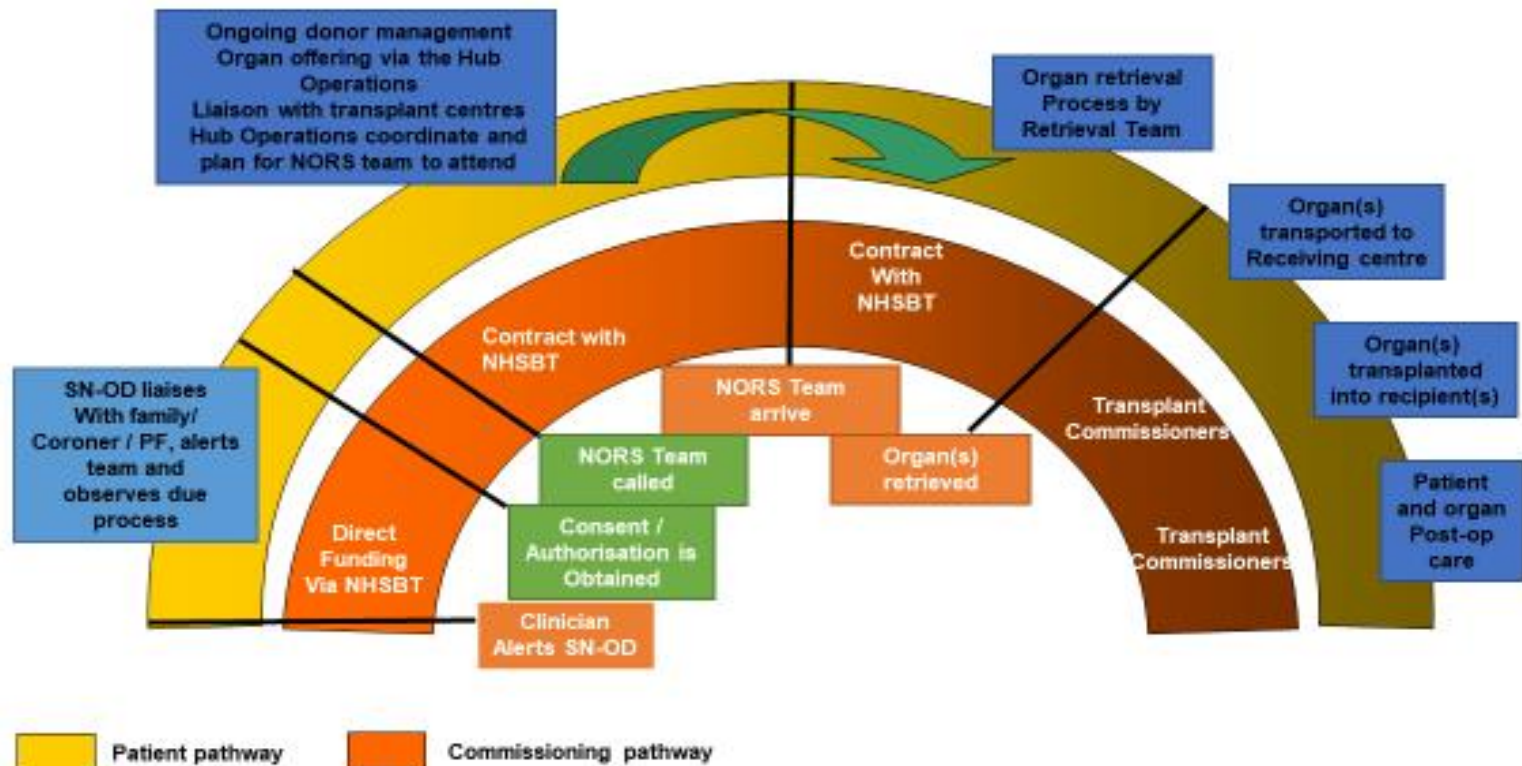
Transplant Registry

Caring, Expert, Quality

The NHS logo, consisting of the letters 'NHS' in a white, bold, sans-serif font inside a blue square.

Blood and Transplant

Who pays for what?



Organ and Tissue Donation and Transplantation (OTDT) Directorate

A thick, solid blue line that curves across the bottom of the slide, starting from the left edge, dipping down, and then rising towards the right edge.



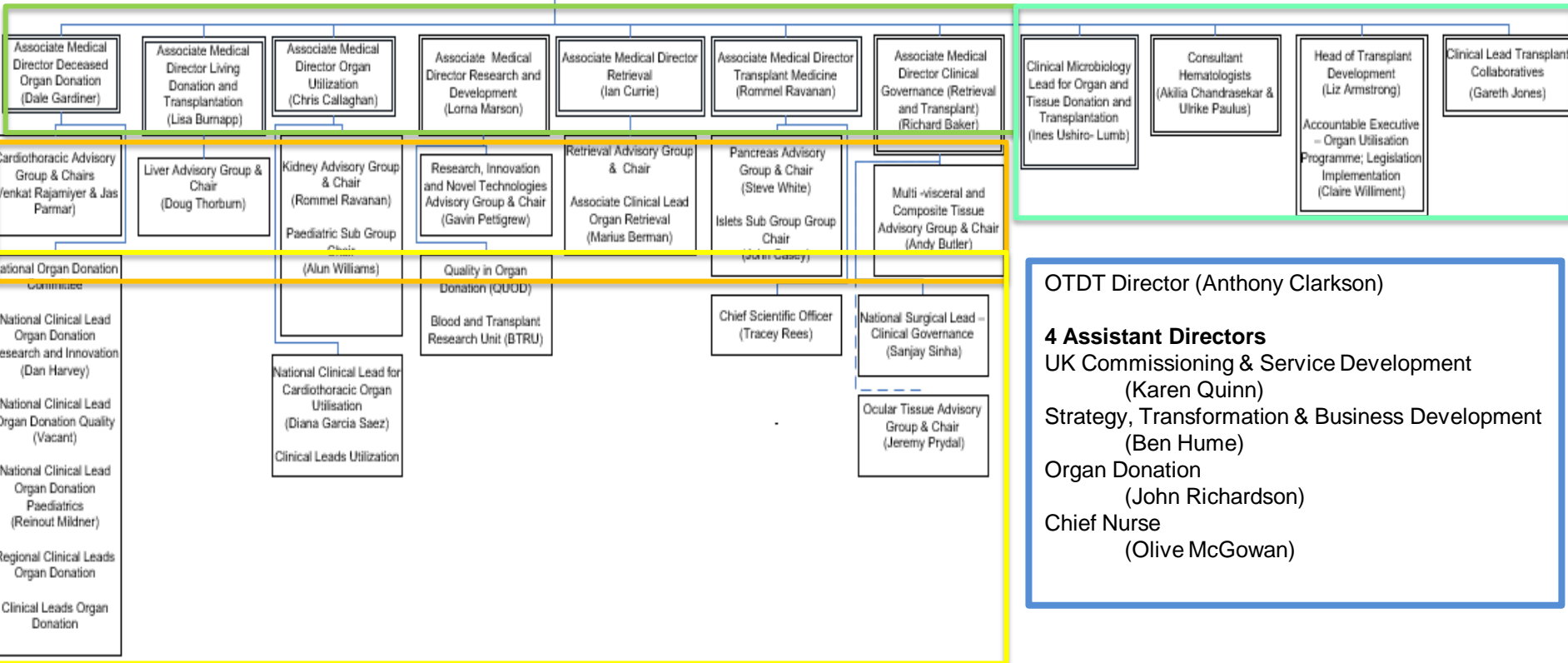
Clinical leadership

Meeting papers and minutes from key ODT management groups

<https://www.odt.nhs.uk/odt-structures-and-standards/clinical-leadership/>

OTDT Clinical Team

OTDT Medical Director
(Derek Manas)



Organ and Tissue Advisory Groups

- Heart and Lung (C-CTAG) and (L-CTAG)
- Liver (LAG)
- Pancreas (PAG)
- Kidney (KAG) and Paediatric KAG (KPAG)
- Multi-visceral and Composite Tissue (MCTAG)
- Retrieval (RAG)
- Ocular (OTAG)
- Multi-disciplinary professionals and lay representatives
- Patient Advisory Groups

What do they do?

- Work with NHSBT to establish policies (e.g.) for organ offering, performance monitoring, best practice
- Discuss and advise on organ/tissue specific issues
- Consider how changes in practice will impact on patients and existing policies
- Consider organ/tissue specific decision-making in the context of other organ/tissue groups and possible impact on patients
- Determine the rules governing an organ/tissue specific group

Regulation





Representing all
professionals involved
in transplantation
in the UK



Learn More



Overview

The British Transplantation Society Nurse and Allied Health Care Professional Chapter is a supportive network for all Nurses and Allied Health Care Professionals (AHPs) working within organ donation and transplantation.

Its aim is to encourage collaborative and inclusive working, the sharing of best evidence based practice, sharing of research and education and to celebrate innovation in transplantation in particular highlighting innovation which is led by Transplant based Nurses and AHPs.

<https://bts.org.uk/chapters-committees/chapter-of-nurses/>