

## CTAG Heart Allocation Sub-Group (Sern Lim, Queen Elizabeth Hospital Birmingham)

### A review of the urgent heart allocation scheme

#### Background

The majority of patients on the urgent heart transplant waiting list are registered under Category 21 (continuous inotrope). The time to urgent heart transplantation has increased over the last few years, in part due to an increase in the number of registrations and the introduction of the Superurgent scheme [Figure 1].

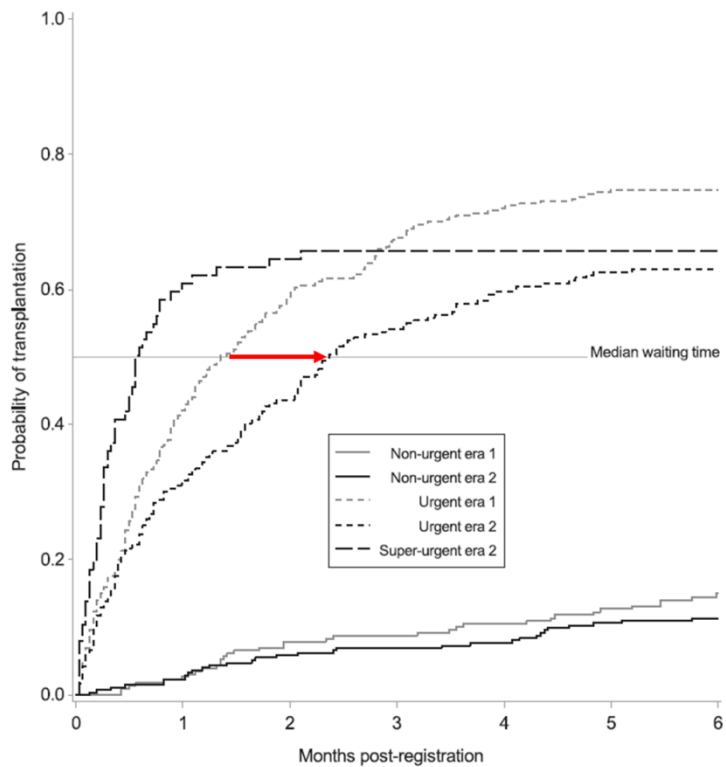


Figure 1: Increase in median waiting time in era 2 following the introduction of the Superurgent category. Data from Rushton S, et al. JHLT 2020.

The most recent data showed that (i) a median waiting time on the Urgent waiting list is now almost two months; and (ii) there is heterogeneity in the waiting times between centres [Figure 2]. There was general consensus among the heart transplant centres that a review of the urgent heart allocation scheme is timely to better understand the characteristics of patients in this category; and identify specific measurable criteria that may be used to refine Category 21 of the urgent heart transplantation. There are currently no objective measurable criteria within Category 21 of the Urgent Heart Scheme. The introduction of objective criteria may improve transparency and consistency across centres.

## Time to urgent heart transplantation

(patients urgent at initial registration April 2019 – March 2021)

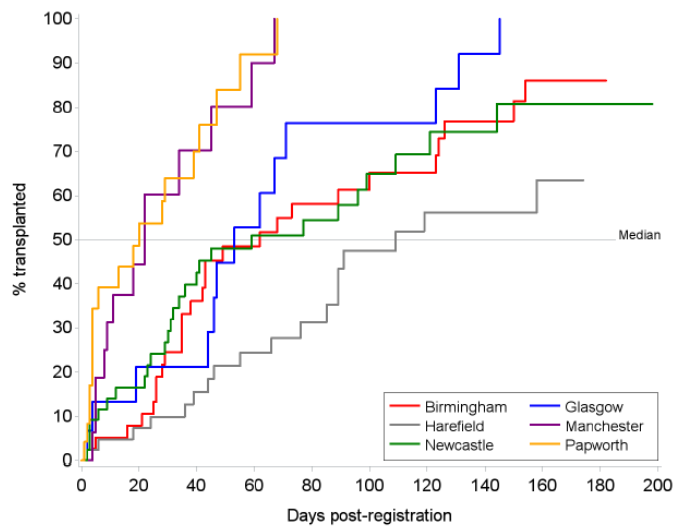


Figure 2: Heterogeneity in median waiting times to urgent heart transplantation between centres.

The CTAG Heart Allocation Sub-Group held a meeting on the 4<sup>th</sup> April 2022. All the heart transplant centres provided data on 20 consecutive patients registered on Category 21 of the urgent list (total n=120). The indications for inotrope use were assigned by clinical team at each centre into a number of categories [Figure 3]. Seventy-one of the 120 patients had more than one indication for inotrope use.

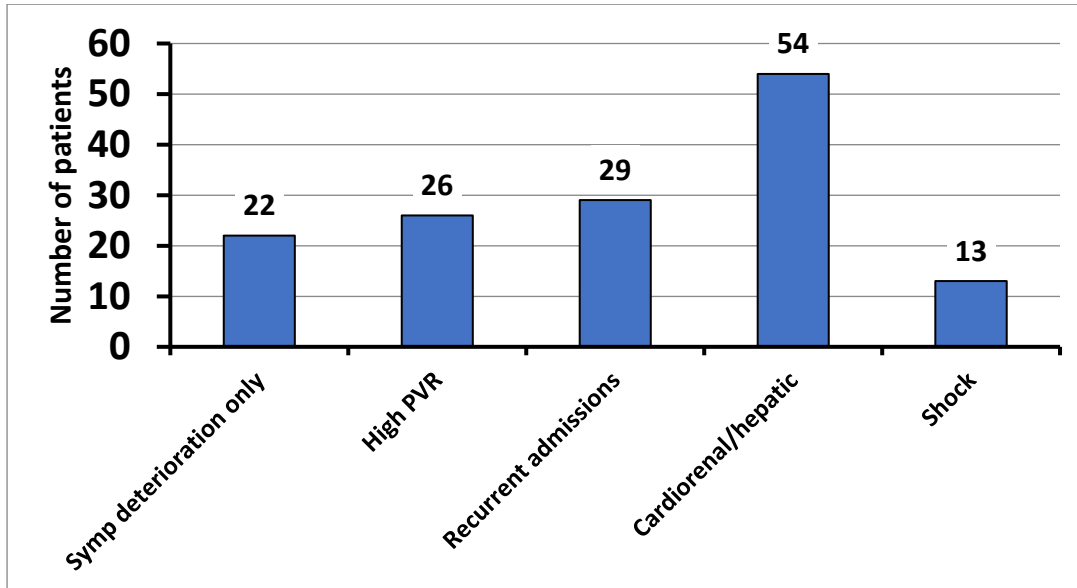


Figure 3: Indications for inotrope use. Seventy-one of the 120 patients had more than one indication.

### The next steps

The data will be analysed and presented at the next Heart Allocation Sub-group meeting with the aim of defining specific sub-categories within Category 21 based on the parameters that led to the initiation of inotropes.