

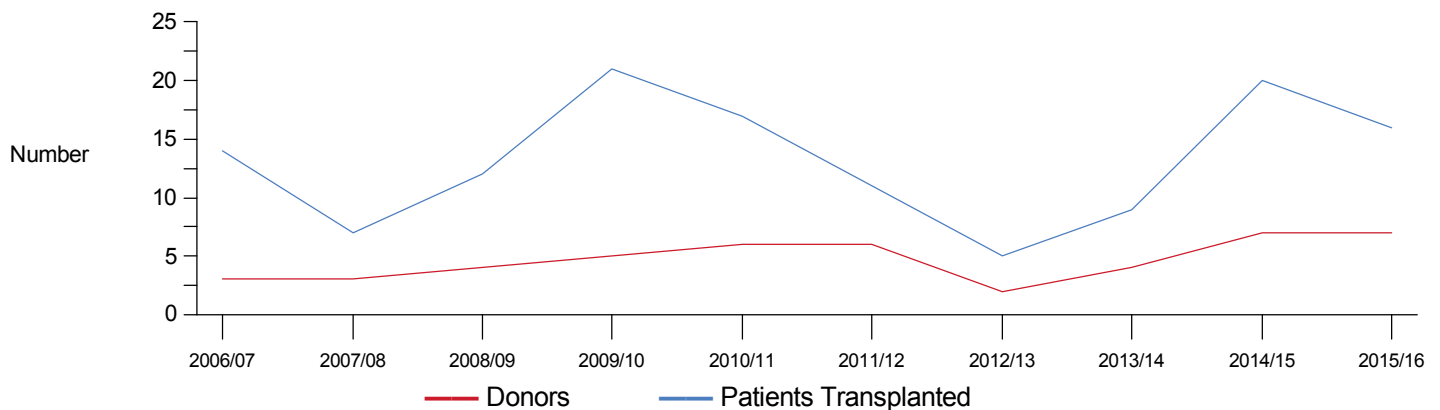
## East Lancashire Hospitals NHS Trust

### Donor outcomes

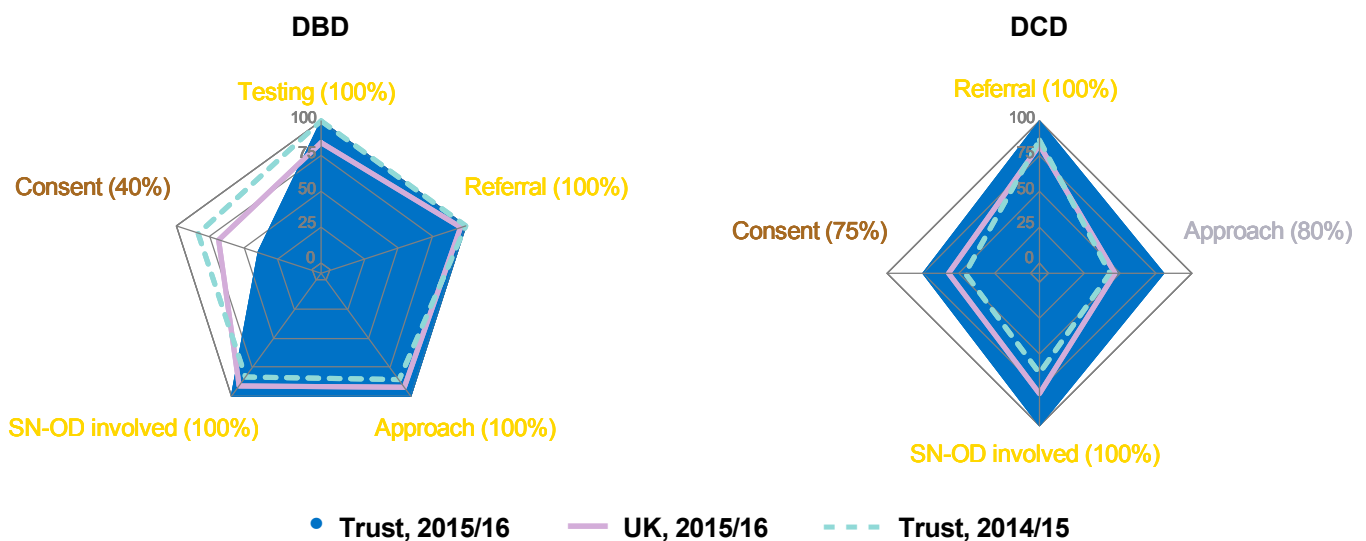
Between 1 April 2015 and 31 March 2016, your Trust had 7 deceased solid organ donors, resulting in 16 patients receiving a transplant. Further details are provided in the table and chart below. If you would like further information, please contact your local Specialist Nurse - Organ Donation (SN-OD).

Donors, patients transplanted and organs per donor, 1 April 2015 - 31 March 2016 (1 April 2014 - 31 March 2015 for comparison)								
	Number of donors		Number of patients transplanted		Average number of organs donated per donor Trust		UK	
Deceased donors	7	(7)	16	(20)	2.7	(3.0)	3.4	(3.4)

### Number of donors and patients transplanted each year



### Radar charts of key rates, 1 April 2015 to 31 March 2016



The blue shaded area represents your Trust's rates for 2015/16. The latest UK rates and your Trust's rates for the equivalent period in the previous year are superimposed for comparison. The fuller the blue shaded area the better. The colour of the rate label on each of the radar charts indicates the Trust performance as shown in the appropriate funnel plot (included in the detailed report) using the gold, silver, bronze, amber, and red (GoSBAR) scheme. Additionally, the funnel plots in the detailed report can be used to identify the maximum rates currently being achieved by Trusts with similar donor potential.

## Key numbers and rates

There are nine measures on the Potential Donor Audit (PDA) which are most likely to affect the conversion of potential donors into actual donors. A comparison against funnel plot boundaries has been applied by highlighting the key rates for your Trust as gold, silver, bronze, amber, or red. Funnel plots can be found in the detailed report. Between 1 April 2015 and 31 March 2016, your Trust met a statistically acceptable level in all of these measures. Of the 5 potential DBD donors with suspected neurological death, 1 proceeded to donation and 4 did not proceed. Of the 15 eligible DCD donors, 6 proceeded to donation and 9 did not proceed. Further details are provided below. Caution should be applied when interpreting percentages based on small numbers.

	Target	DBD				DCD				
		2015/16		2014/15		2015/16		2014/15		
		Trust	UK	Trust	UK	Trust	UK	Trust	UK	
Patients meeting organ donation referral criteria <sup>1</sup>		5	1,742	9	1,734	22	6,502	43	6,755	
Referred to SN-OD		5	1,679	9	1,671	22	5,399	37	5,154	
Referral rate %	96%	<b>G</b> 100%	96%	100%	96%	79%	<b>G</b> 100%	83%	86%	76%
Neurological death tested		5	1,472	9	1,445					
Testing rate %	82%	<b>G</b> 100%	85%	100%	83%					
Eligible donors <sup>2</sup>		5	1,399	7	1,373	15	4,204	26	4,284	
Family approached		5	1,293	6	1,284	12	1,941	11	2,018	
Approach rate %	94%	<b>G</b> 100%	92%	86%	94%	47%	<b>S</b> 80%	46%	42%	47%
Family approached and SN-OD involved		5	1,177	5	1,113	12	1,511	7	1,459	
% of approaches where SN-OD involved	87%	<b>G</b> 100%	91%	83%	87%	75%	<b>G</b> 100%	78%	64%	72%
Consent given		2	888	5	859	9	1,112	5	1,046	
Consent rate %	73%	<b>B</b> 40%	69%	83%	67%	59%	<b>B</b> 75%	57%	45%	52%
Expected consents based on ethnic mix		3		4		7		5		
Expected consent rate based on ethnic mix %		66%		70%		58%		50%		
Actual donors from each pathway		1	784	4	780	6	566	3	493	
% of consented donors that became actual donors		50%	88%	80%	91%	67%	51%	60%	47%	
Colour key - comparison with funnel plot confidence limits		<b>G</b> Gold <b>A</b> Amber		<b>S</b> Silver <b>R</b> Red		<b>B</b> Bronze				

<sup>1</sup> DBD - A patient with suspected neurological death  
DCD - A patient in whom imminent death is anticipated, ie a patient receiving assisted ventilation, a clinical decision to withdraw treatment has been made and death is anticipated within 4 hours

<sup>2</sup> DBD - Death confirmed by neurological tests and no absolute contraindications to solid organ donation  
DCD - Imminent death anticipated and treatment withdrawn with no absolute contraindications to solid organ donation

## Further Information

- A detailed report for your Trust accompanies this Executive Summary, which also contains definitions of terms, abbreviations, table and figure descriptions, targets and tolerances, and details of the main changes made to the PDA on 1 April 2013.
- The latest Activity Report is available at <https://www.organdonation.nhs.uk/supporting-my-decision/statistics-about-organ-donation/transplant-activity-report/>
- The latest PDA Annual Report is available at <http://www.odt.nhs.uk/odt/potential-donor-audit/>
- Please refer any queries or requests for further information to your local Specialist Nurse - Organ Donation (SN-OD).

## Source

NHS Blood and Transplant: UK Transplant Registry (UKTR), Potential Donor Audit (PDA) and Referral Record. Issued May 2016 based on data reported at 9 May 2016.