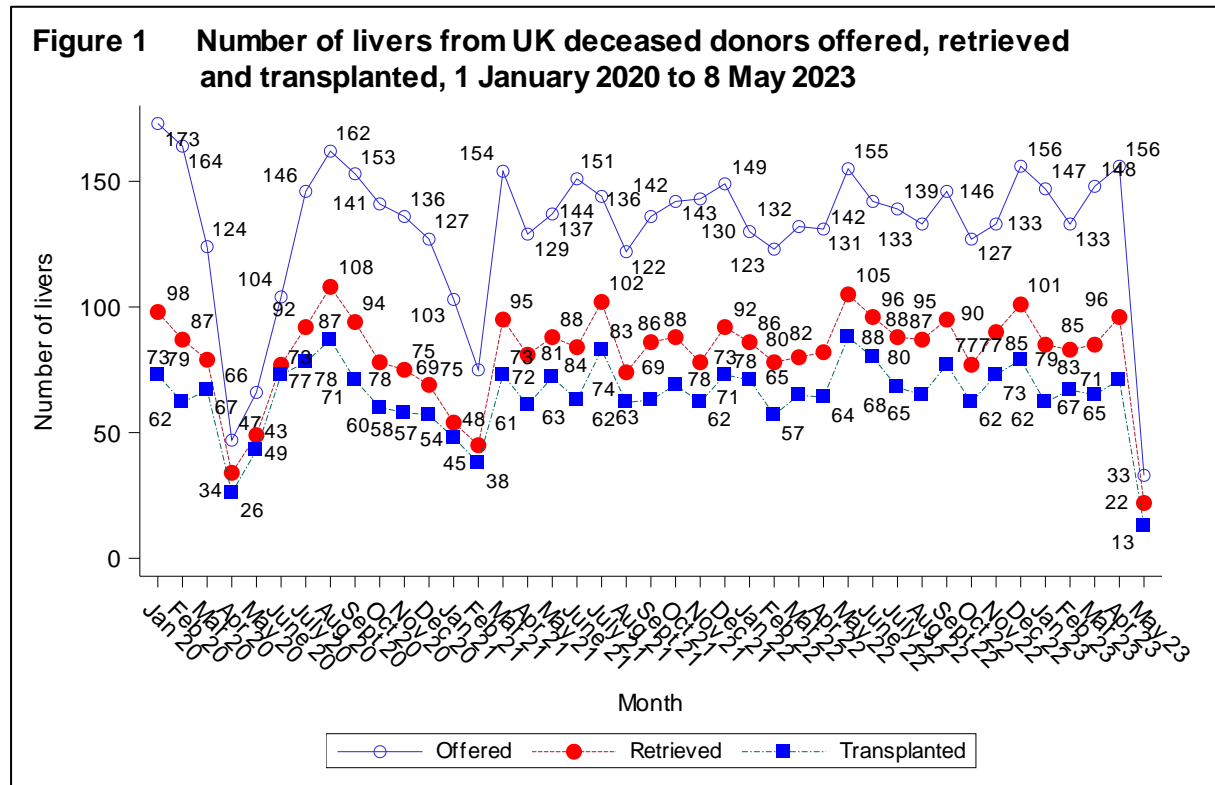


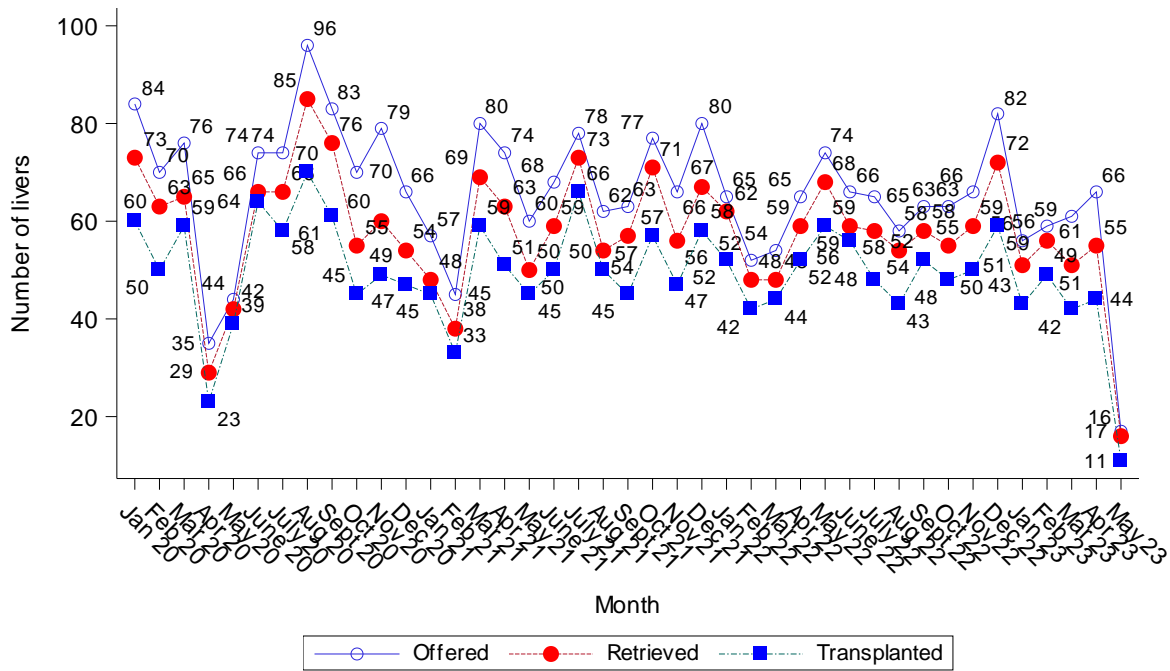
# NHS BLOOD & TRANSPLANT

## Liver offering outcome, 1 January 2020 to 8 May 2023

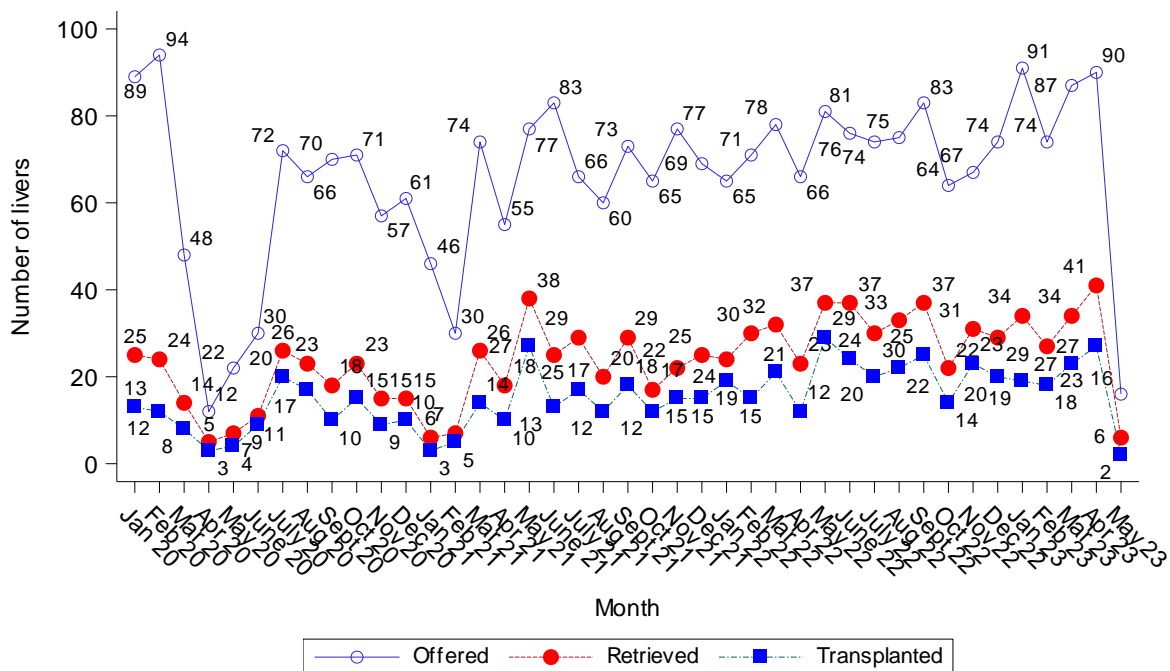
This report examines the offering outcome of livers offered for transplantation from UK deceased donors between 1 January 2020 and 8 May 2023 as recorded on the UK Transplant Registry on 9 May 2023.



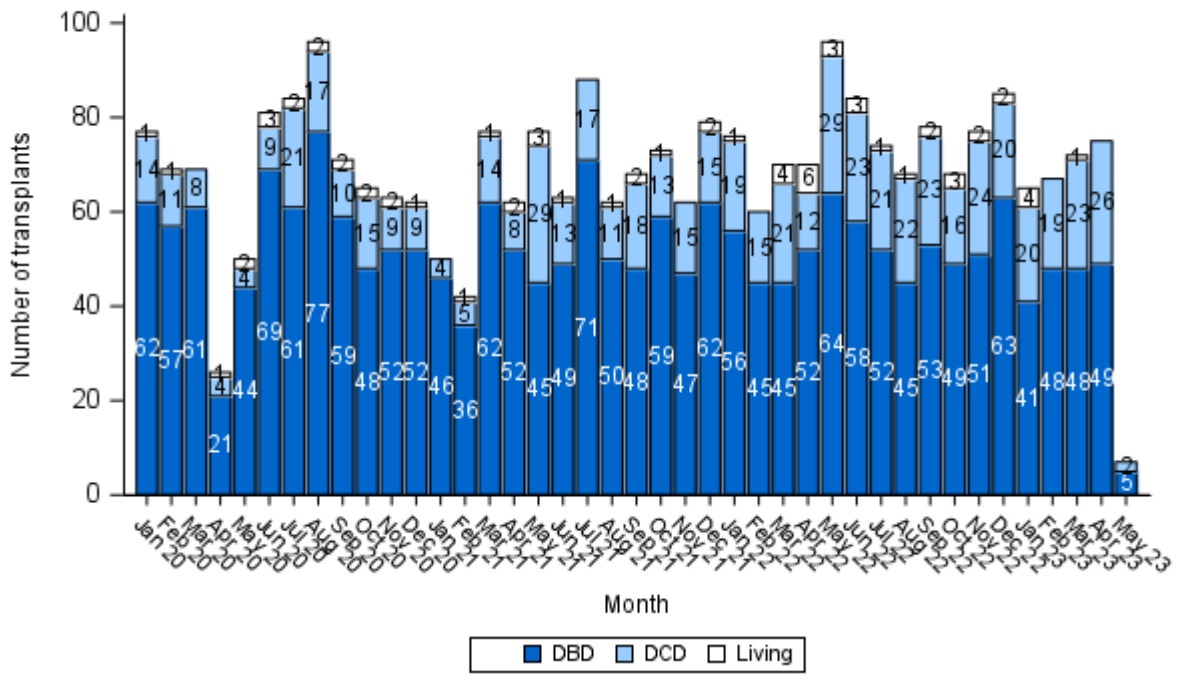
**Figure 2A** Number of livers from UK DBD donors offered, retrieved and transplanted, 1 January 2020 to 8 May 2023



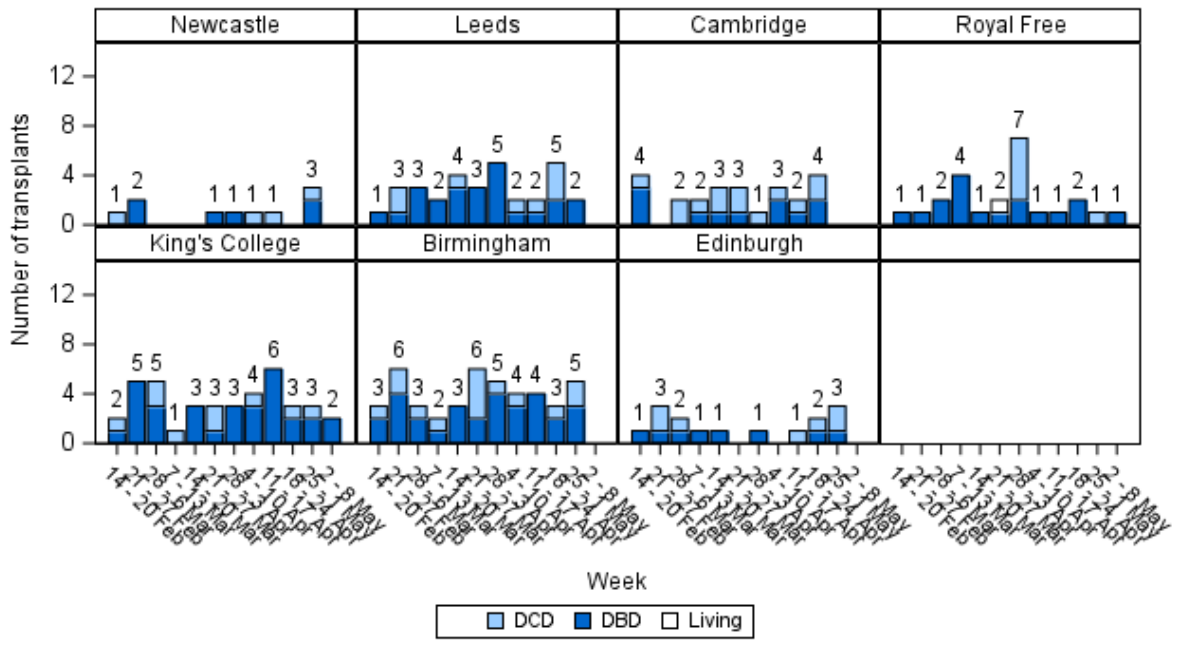
**Figure 2B** Number of livers from UK DCD donors offered, retrieved and transplanted, 1 January 2020 to 8 May 2023



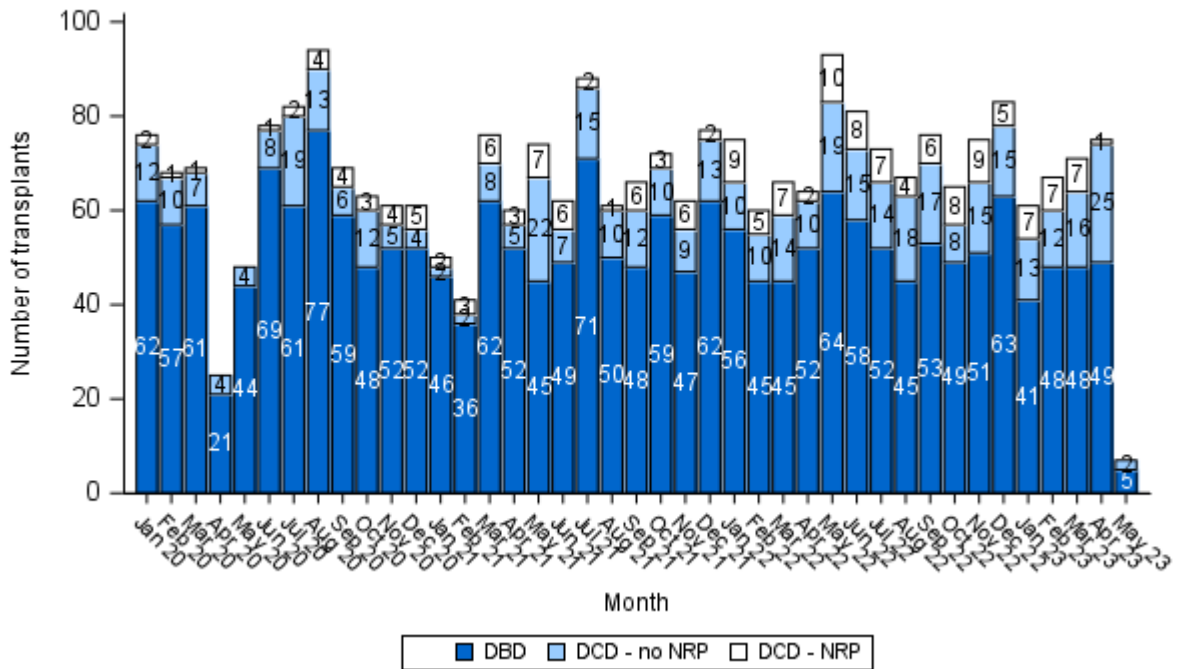
**Figure 3** Number of liver transplants performed in the UK, by donor type, 1 January 2020 to 8 May 2023



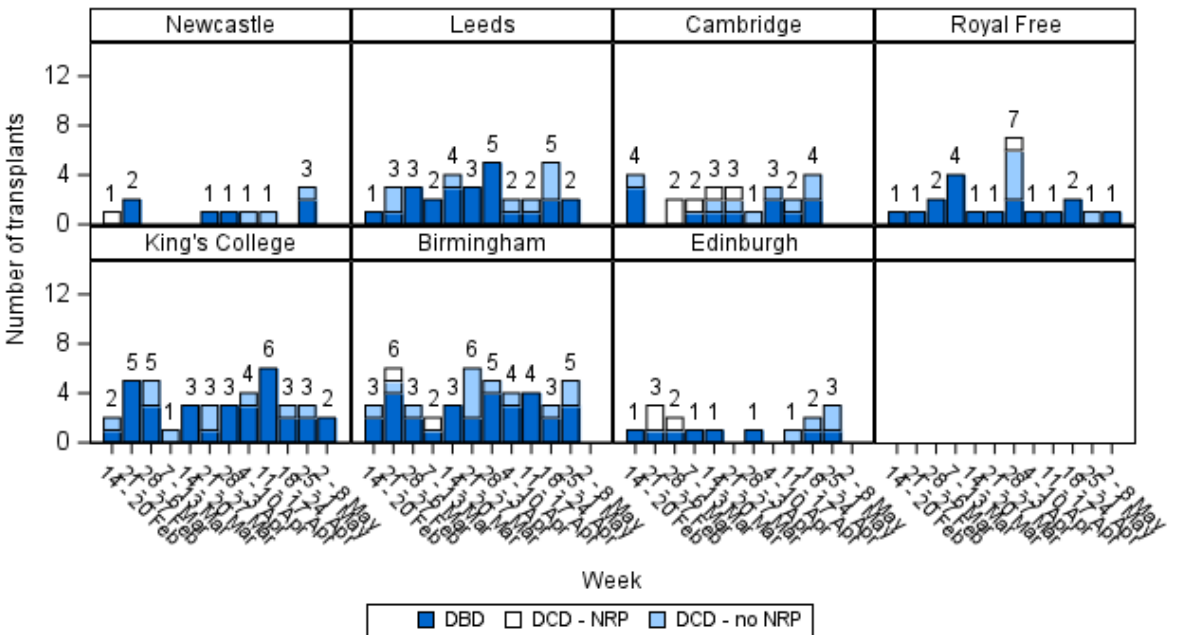
**Figure 4A** Number of liver transplants performed in the UK, by transplant centre and donor type, 14 February 2023 to 8 May 2023



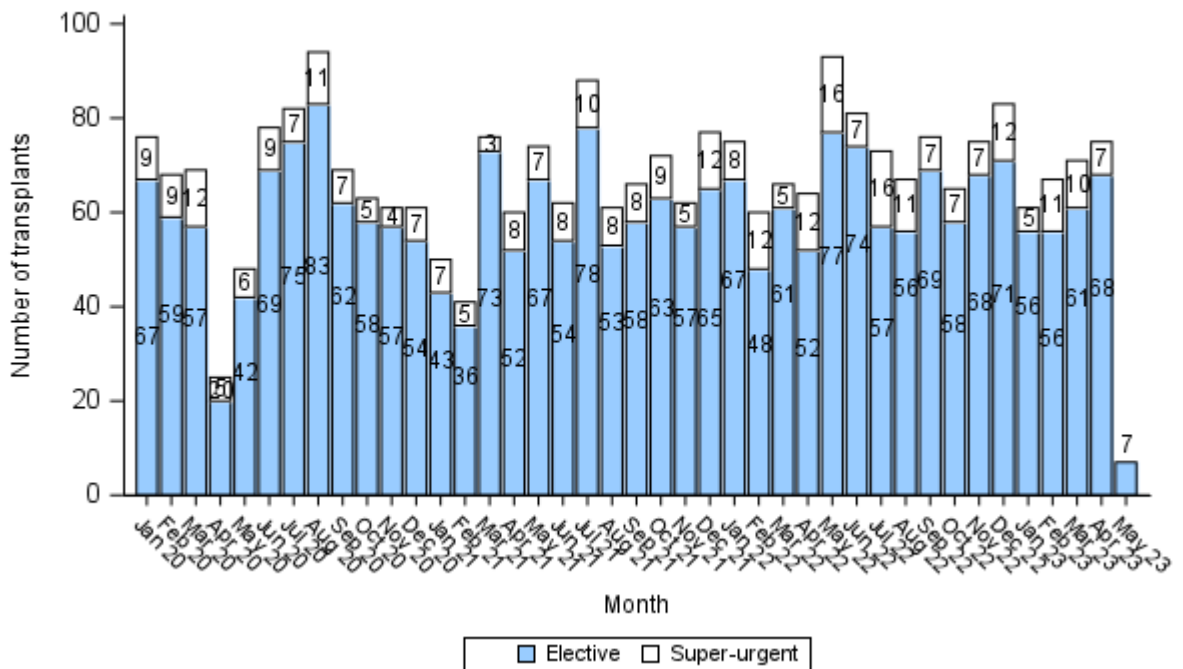
**Figure 5** Number of deceased donor liver transplants performed in the UK, by NRP, 1 January 2020 to 8 May 2023



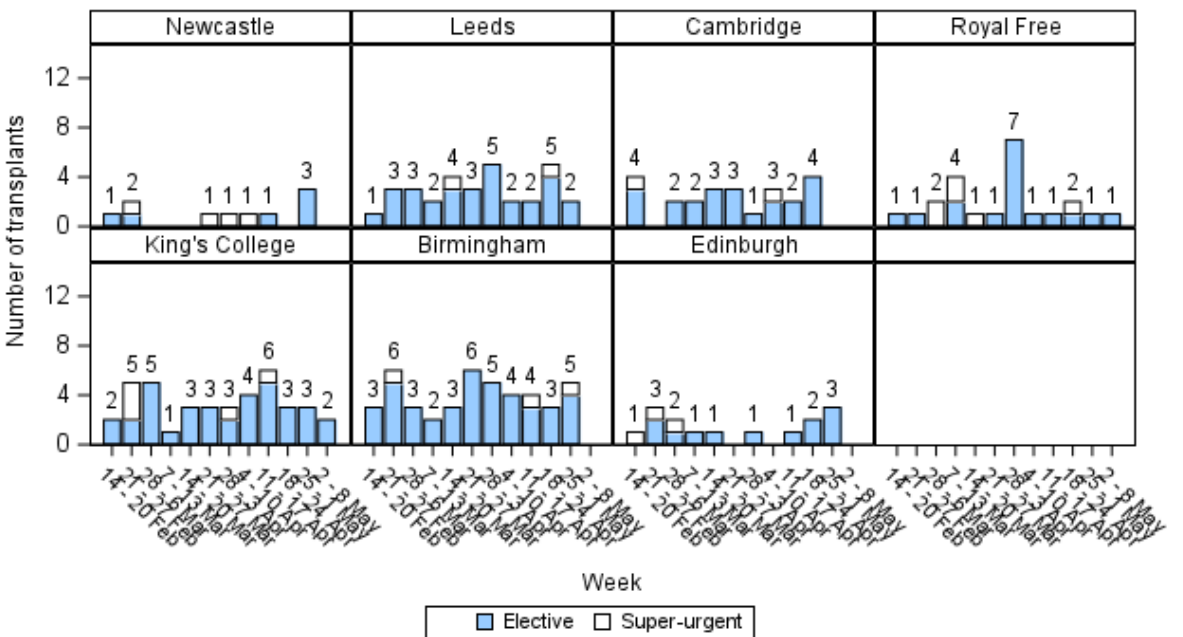
**Figure 6A** Number of deceased donor liver transplants performed in the UK, by transplant centre and NRP, 14 February 2023 to 8 May 2023



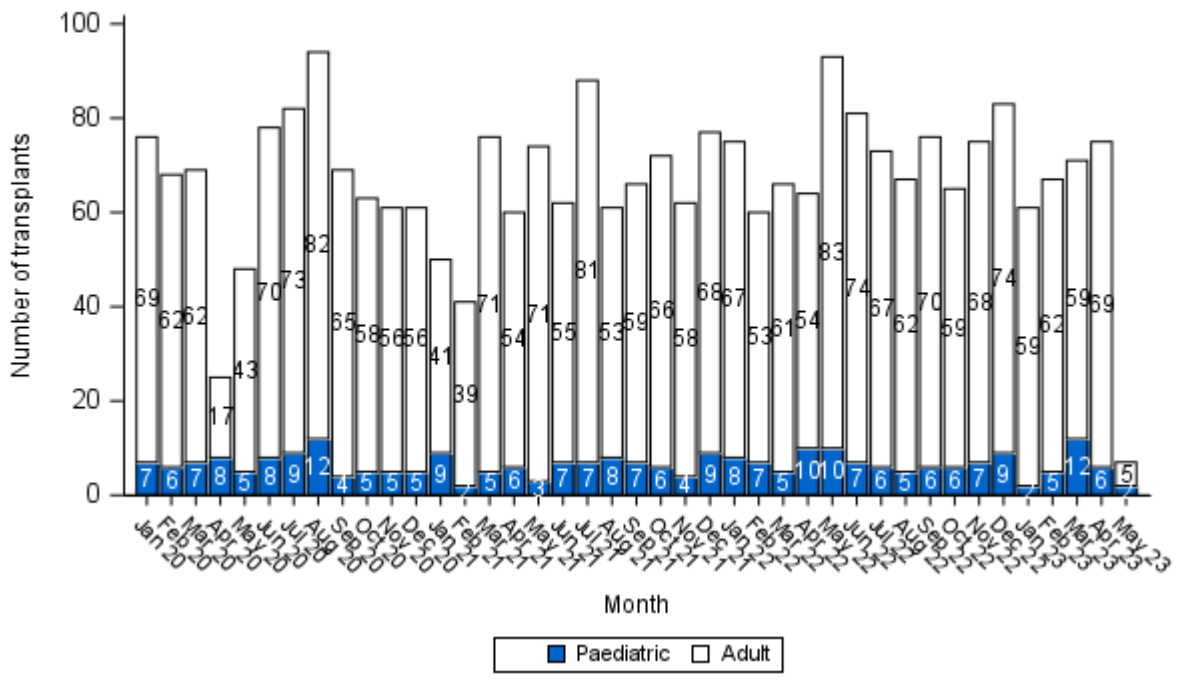
**Figure 7** Number of deceased donor liver transplants performed in the UK, by urgency status, 1 January 2020 to 8 May 2023



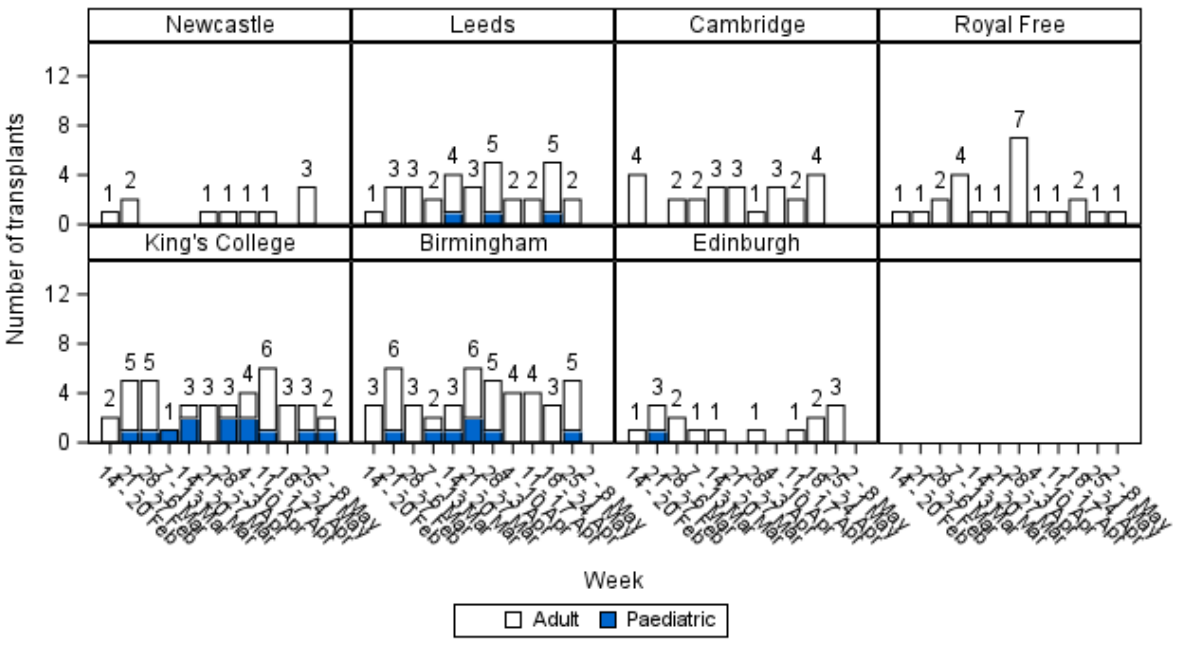
**Figure 8A** Number of deceased donor liver transplants performed in the UK, by transplant centre and urgency status, 14 February 2023 to 8 May 2023



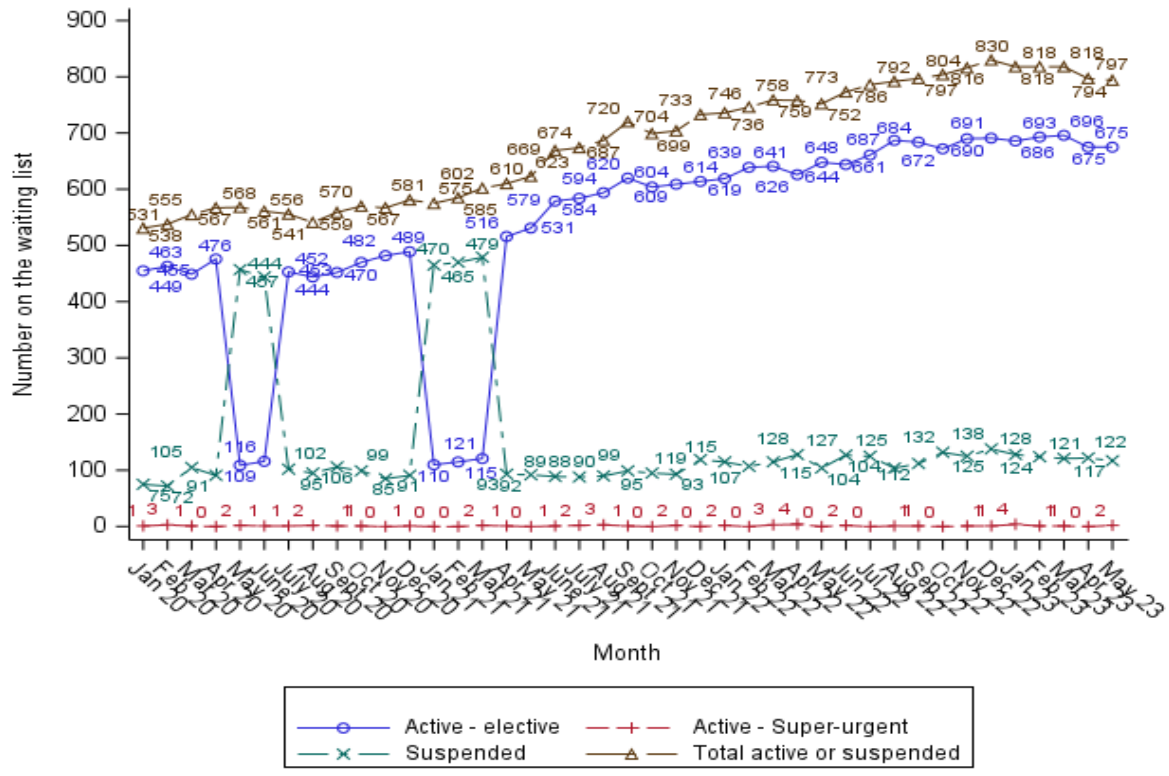
**Figure 9** Number of deceased donor liver transplants performed in the UK, by age group, 1 January 2020 to 8 May 2023



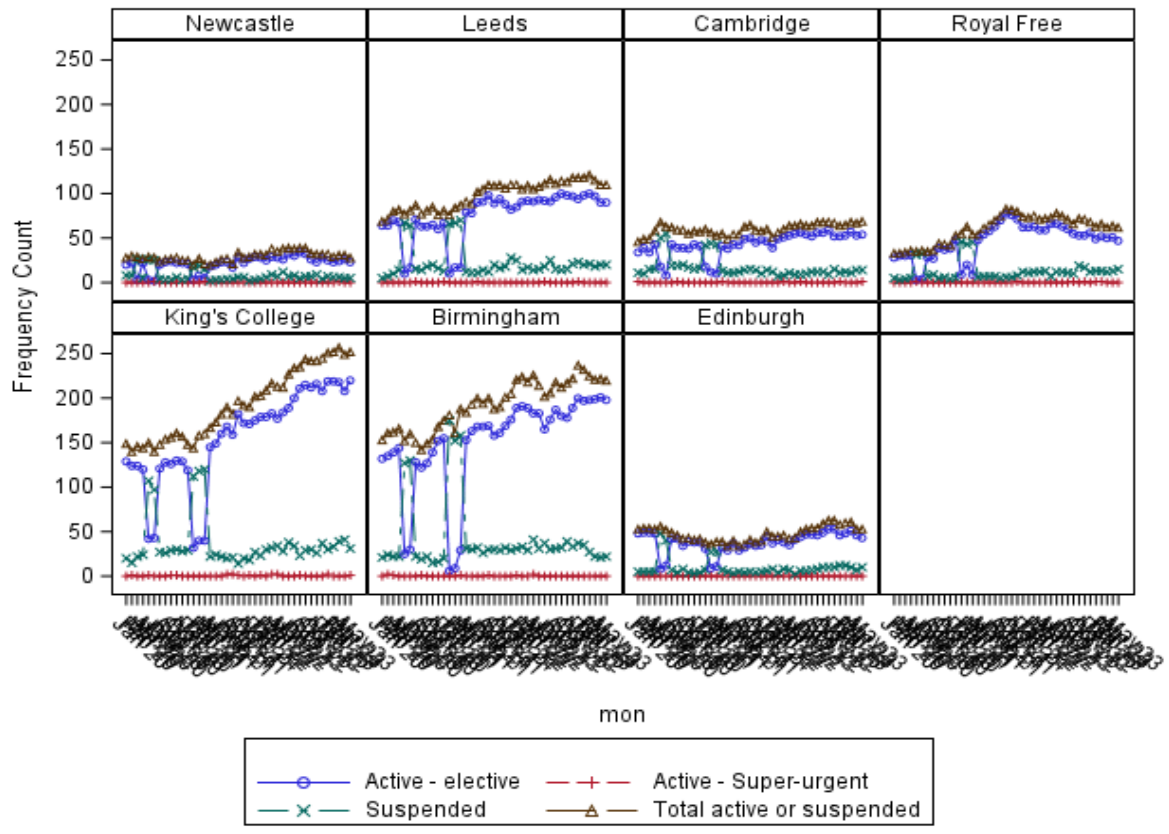
**Figure 10A** Number of deceased donor liver transplants performed in the UK, by transplant centre and age group, 14 February 2023 to 8 May 2023

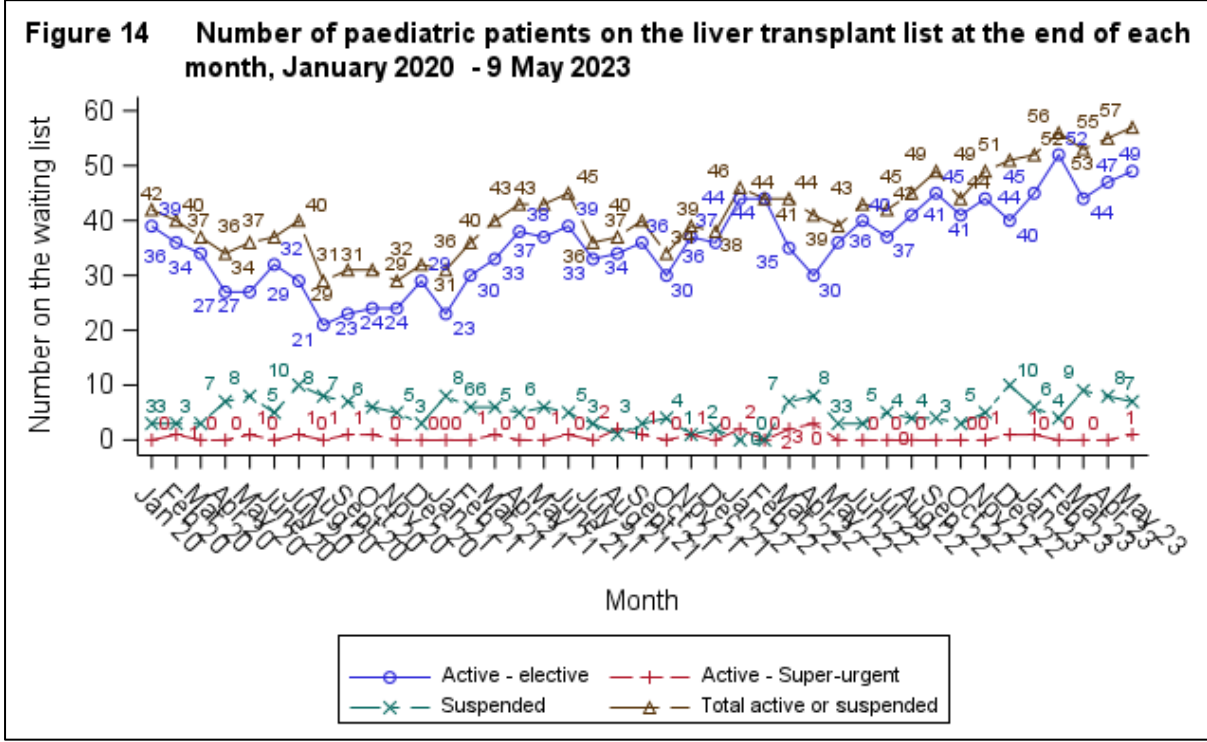
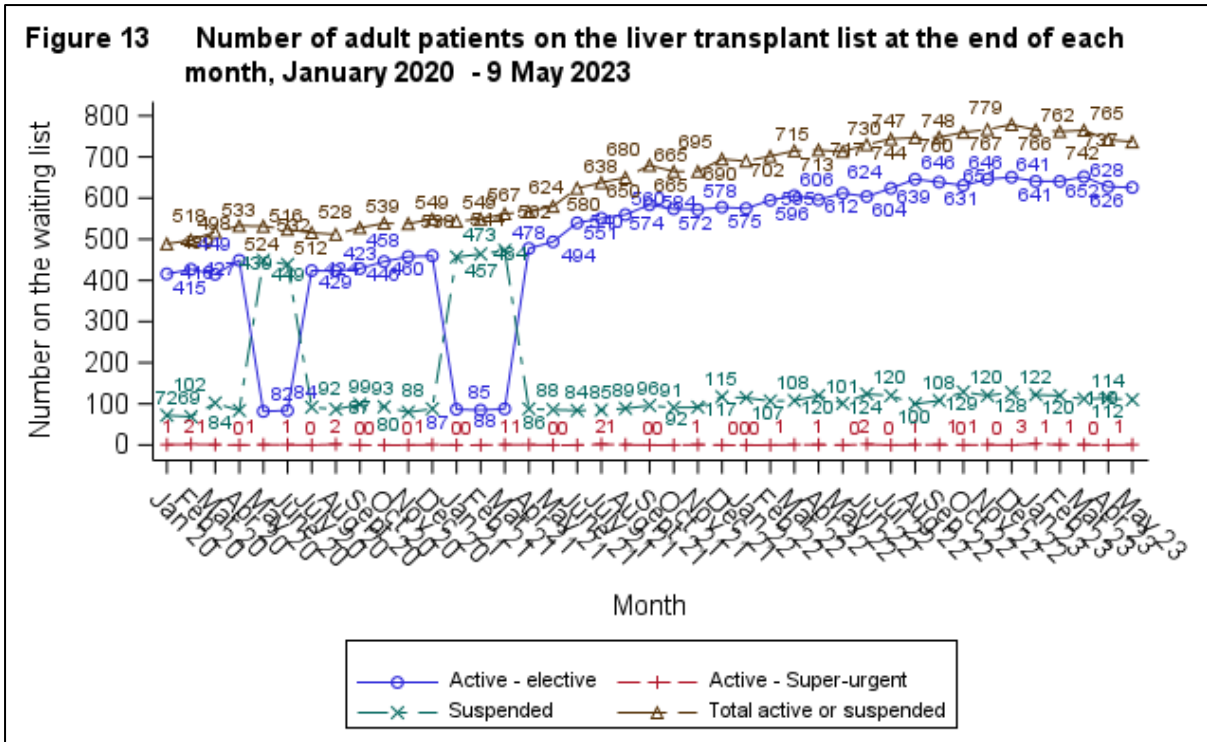


**Figure 11** Number of patients on the liver transplant list at the end of each month, January 2020 - 9 May 2023



**Figure 12** Number of patients on the liver transplant list at the end of each month, by centre, January 2020 - 9 May 2023







675 patients active on the UK elective liver list on 9 May 2023 (679 on 12 April):

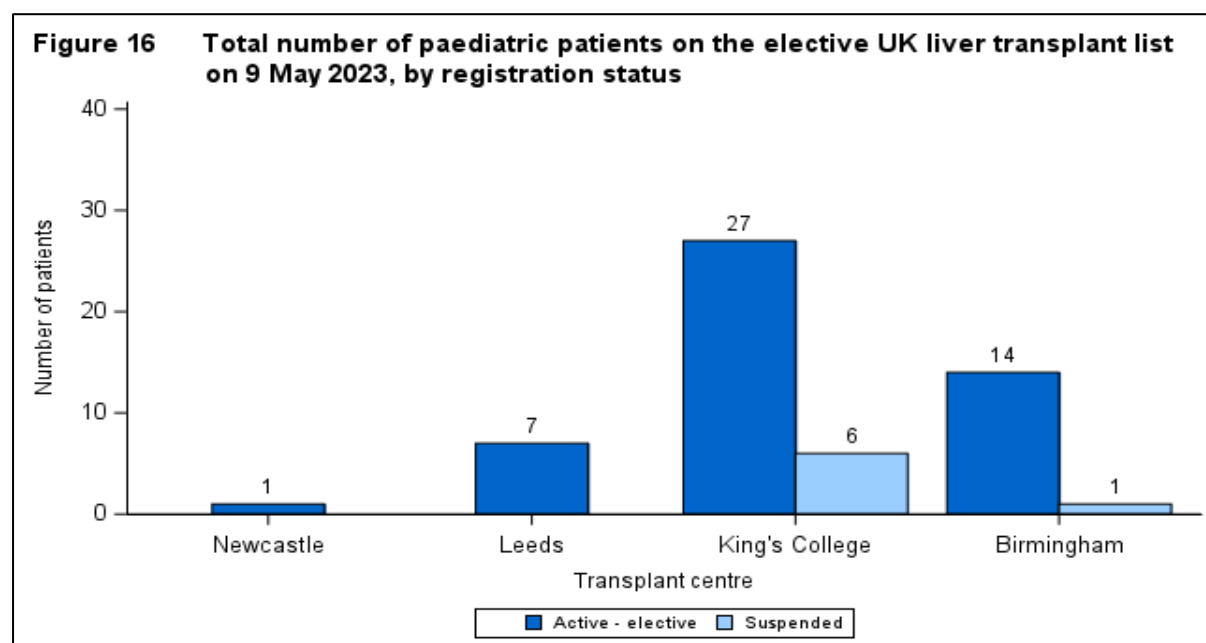
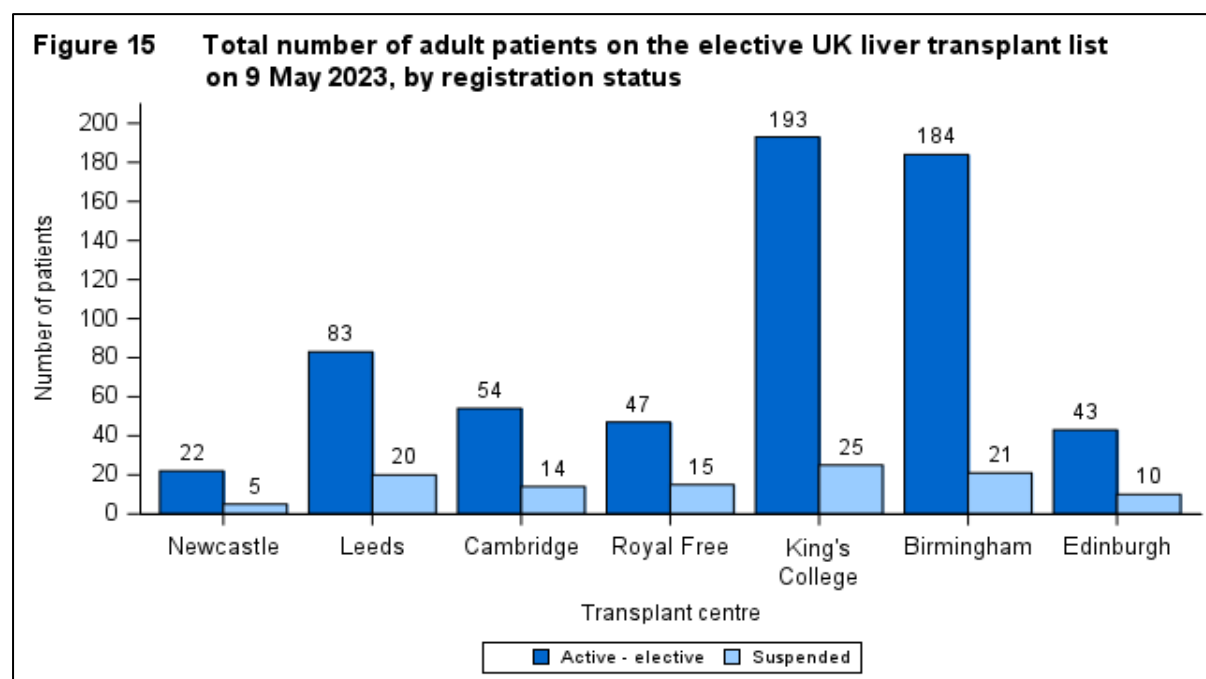
- 626 adult (637)
- 49 paediatric (42)

Two patients currently active on the super-urgent list, as at 9 May 2023

- One adult blood group O patient at Cambridge
- One paediatric (16 yo) blood group A patient at Kings College

Additional 11 patients currently active on intestinal list and 9 suspended

- 10 also require a liver (9 active and 1 suspended)



**Table 2 Reason given for recipient suspensions by transplant centre as at 9 May 2023**

Reason	Newcastle	Leeds	Cambridge	Royal Free	Kings College	Birmingham	Edinburgh	Overall
Condition Improved	0	5	6	4	3	4	0	22
Condition Deteriorated	2	11	4	2	21	9	3	52
Medical Investigations	1	2	2	7	3	3	5	23
Patient/Parent request	0	0	2	1	3	1	2	9
Patient non-compliant	0	1	0	0	0	1	0	2
Patient temporarily unavailable	1	0	0	0	1	0	0	2
Other/Unknown	1	1	0	1	0	4	0	7
<b>Total</b>	<b>5</b>	<b>20</b>	<b>14</b>	<b>15</b>	<b>31</b>	<b>22</b>	<b>10</b>	<b>117</b>

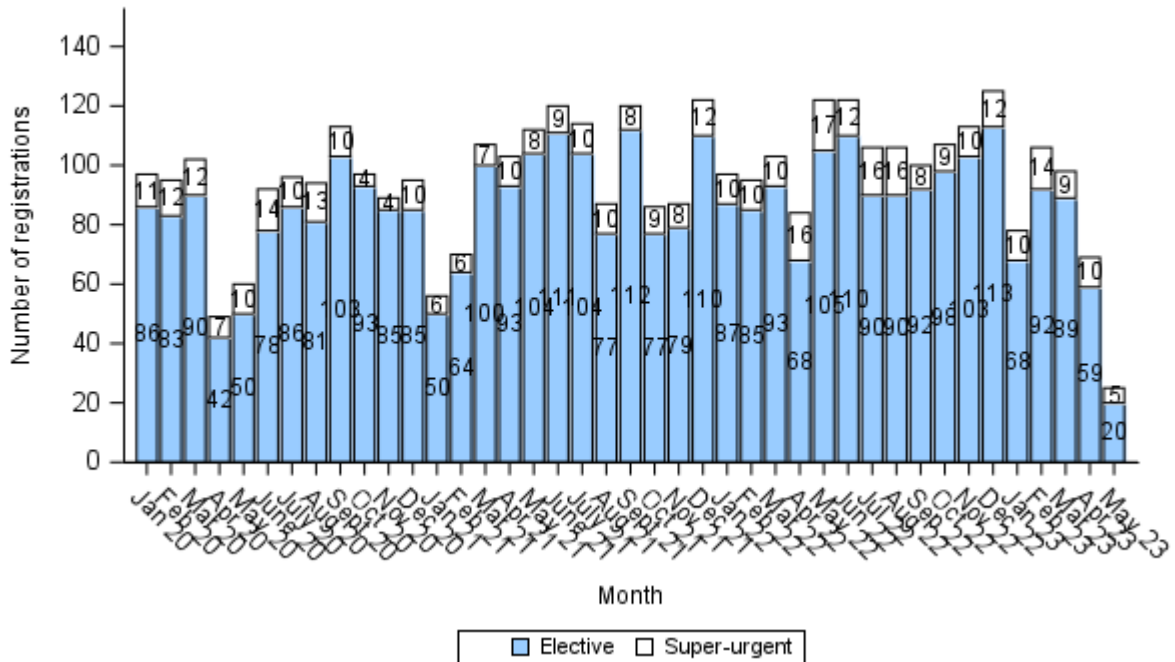
**Table 2a Reason given for recipient suspensions as at 9 May 2023**

Reason	N	%	Length of Suspension			
			Median	IQ-Range	Min	Max
Condition Improved	22	19	163	48 – 288	11	1877
Condition Deteriorated	52	44	52	13.5 – 152	1	529
Medical Investigations	23	20	39	25 – 88	1	243
Patient/Parent request	9	7	12	7 – 154	1	229
Patient non-compliant	2	2	187	36 – 338	36	338
Patient temporarily unavailable	2	2	118	48 – 188	48	188
Other	7	6	116	74 - 126	28	420
<b>Total</b>	<b>117</b>	<b>100</b>	<b>74</b>	<b>25 – 168</b>	<b>1</b>	<b>1877</b>

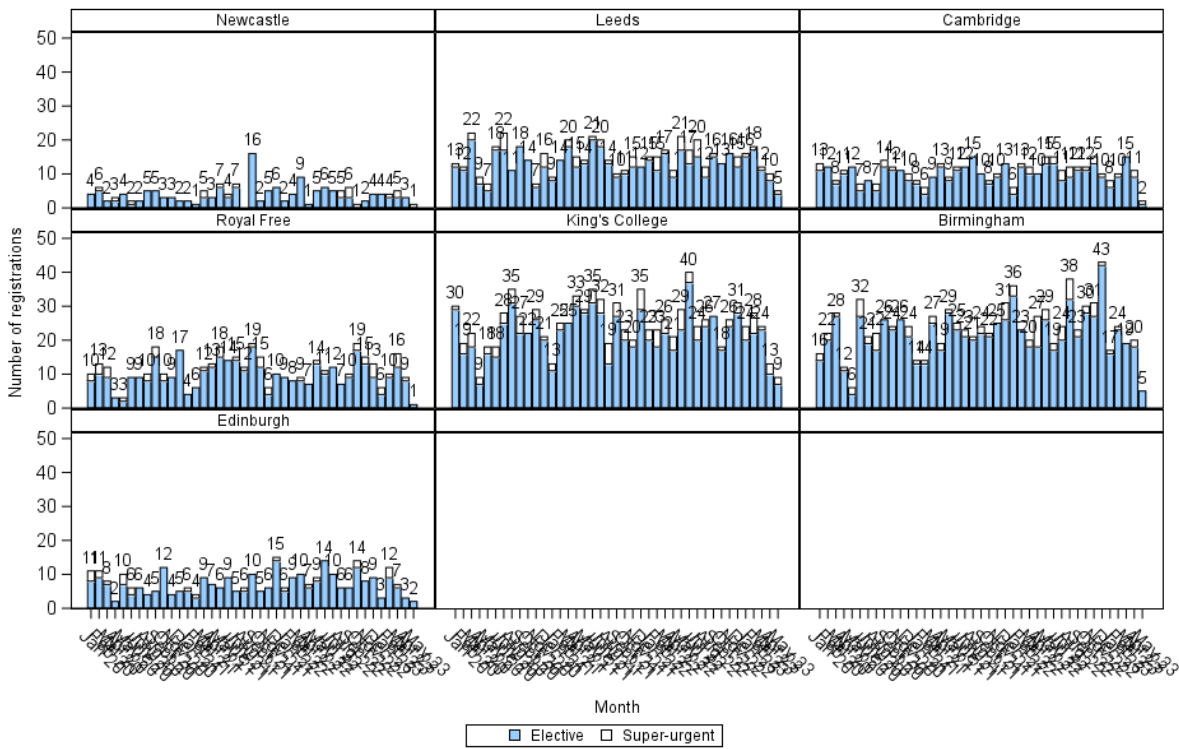
**Table 2b Time suspended by transplant centre for recipient suspensions as at 9 May 2023**

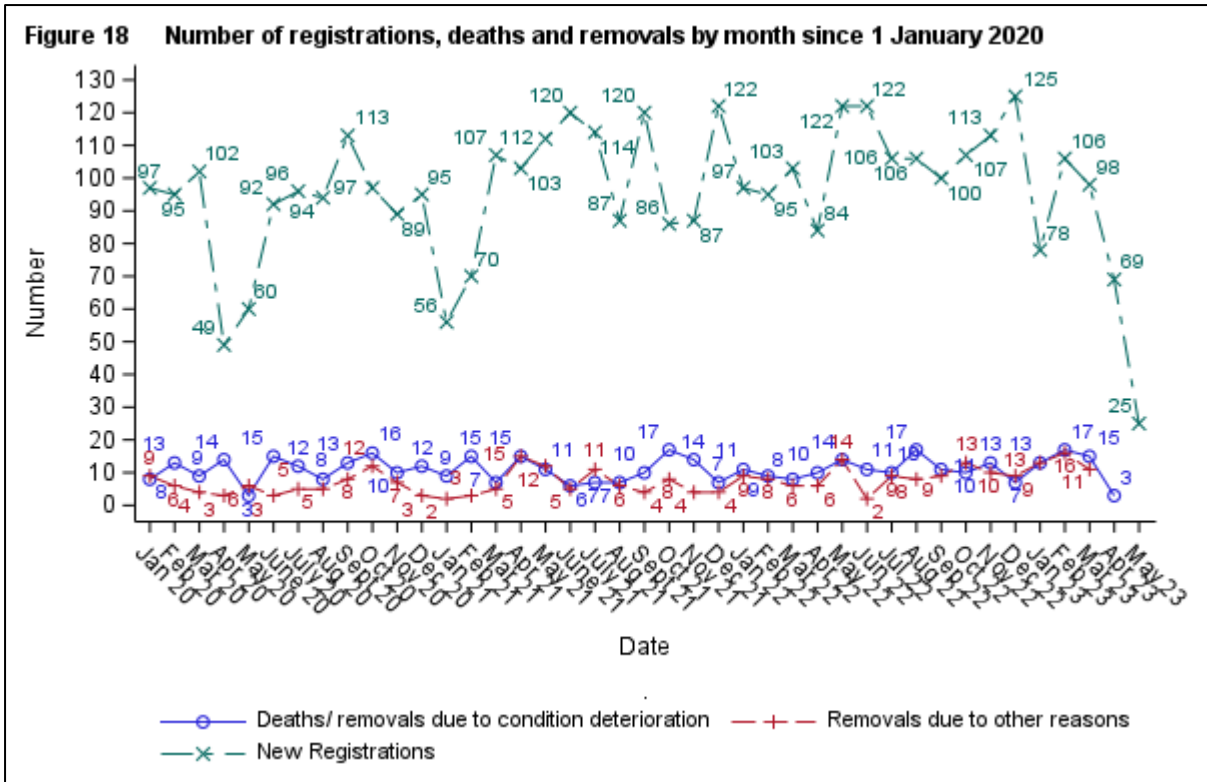
Reason	N	%	Length of Suspension			
			Median	IQ-Range	Min	Max
Newcastle	5	4	188	116 – 207	7	228
Leeds	20	17	88	14.5 – 167	1	366
Cambridge	14	12	45	27 – 165	6	512
Royal Free	15	13	53	12 – 204	4	396
Kings College	31	26	56	33 – 188	1	1877
Birmingham	22	19	86	14 - 168	2	420
Edinburgh	10	9	25	7 - 85	1	229
<b>Total</b>	<b>117</b>	<b>100</b>	<b>74</b>	<b>25 – 168</b>	<b>1</b>	<b>1877</b>

**Figure 17** Number of new registrations onto the UK liver transplant list, by urgency status, 1 January 2020 to 9 May 2023

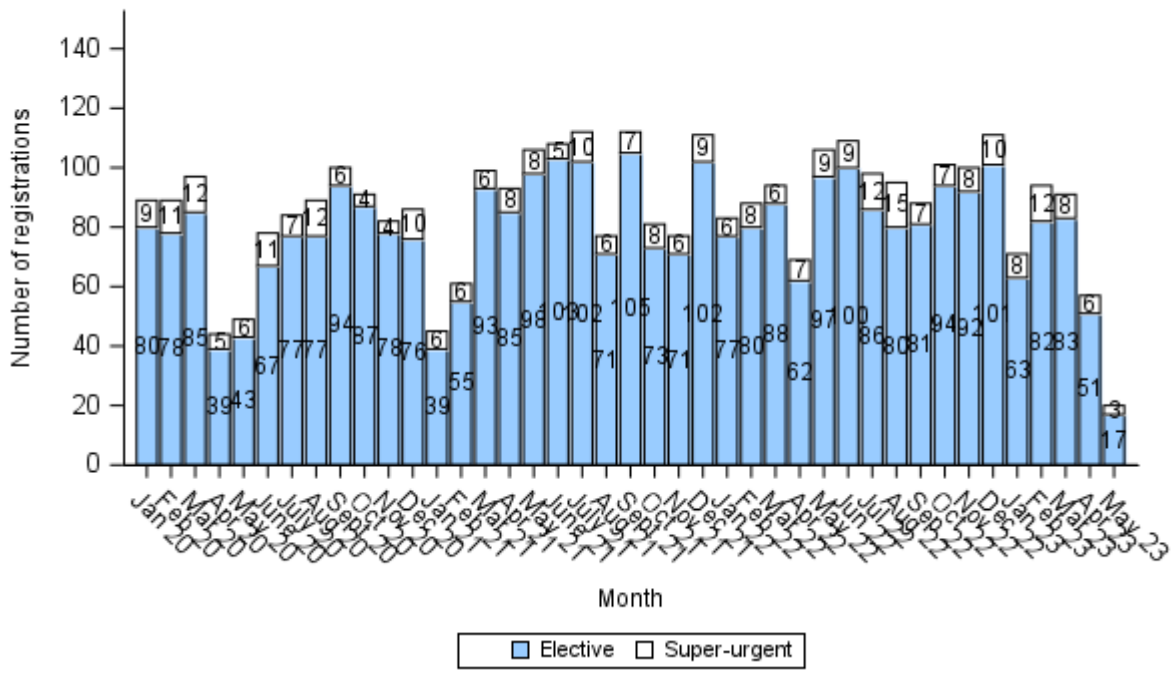


**Figure 17A** Number of new registrations onto the UK liver transplant list, by transplant centre and urgency status, 1 January 2020 to 9 May 2023

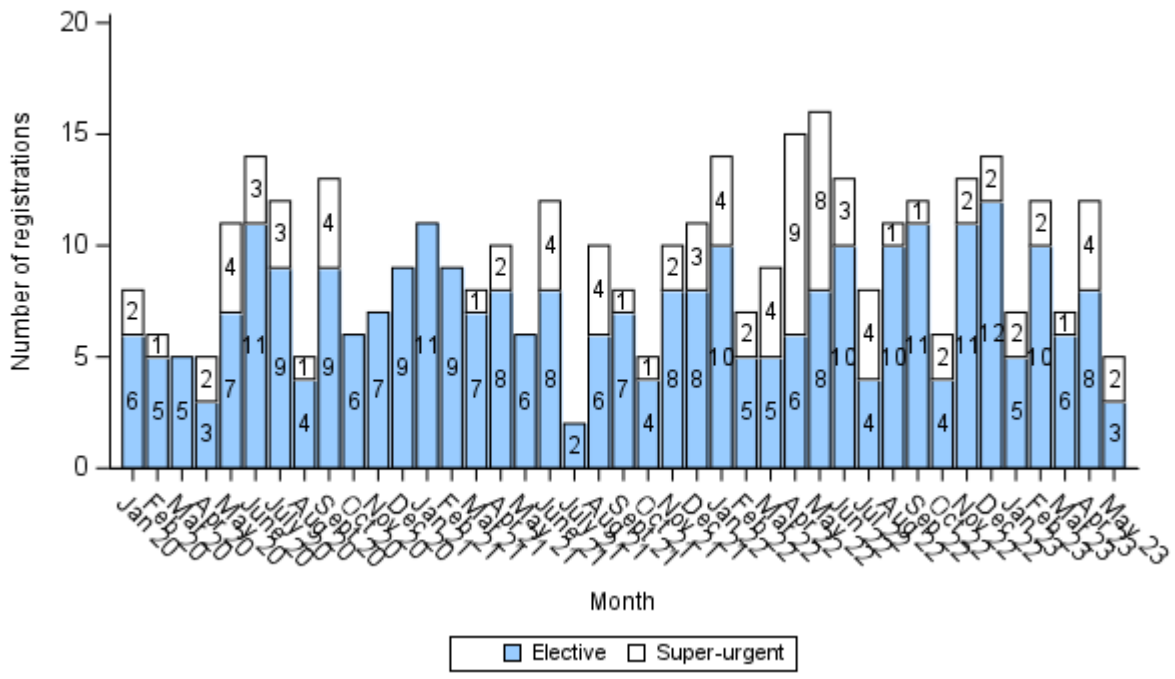




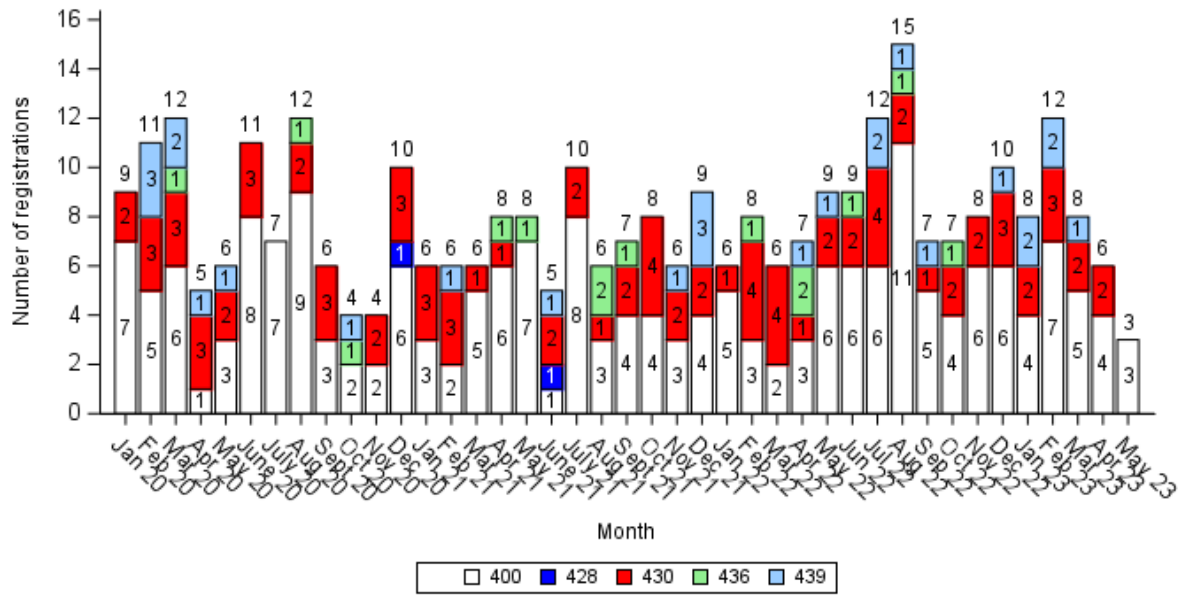
**Figure 19A** Number of new adult registrations onto the UK liver transplant list, by urgency status, 1 January 2020 to 9 May 2023



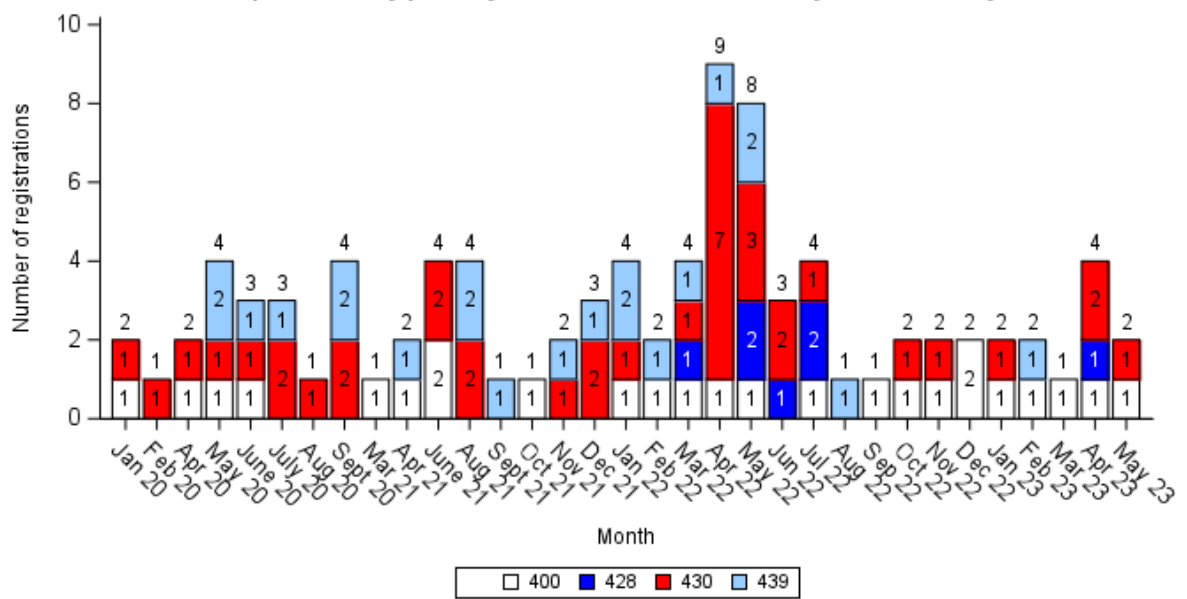
**Figure 19B** Number of new paediatric registrations onto the UK liver transplant list, by urgency status, 1 January 2020 to 9 May 2023



**Figure 20A** Number of new adult registrations onto the UK super-urgent liver transplant list, by primary liver indication, 1 January 2020 to 9 May 2023



**Figure 20B** Number of new paediatric registrations onto the UK super-urgent liver transplant list, by primary liver indication, 1 January 2020 to 9 May 2023



400 – AHF - Budd-Chiari syndrome (427), AHF - Wilson's disease (434),  
AHF - paracetamol hepatotoxicity (437), Acute hepatic failure - other drug toxicity (438),  
Primary non-function (473), Non-thrombotic infarction (475),  
Hepatic artery thrombosis (479), Early graft dysfunction (480)  
Acute vascular occlusion – venous (481), Acute vascular occlusion - artery and venous (482)

428 - Acute hepatic failure - other virus  
430 - Acute hepatic failure - serologically indeterminate  
435 - Acute hepatic failure - HAV  
436 - Acute hepatic failure – HBV  
439 - Acute hepatic failure - other, please specify