

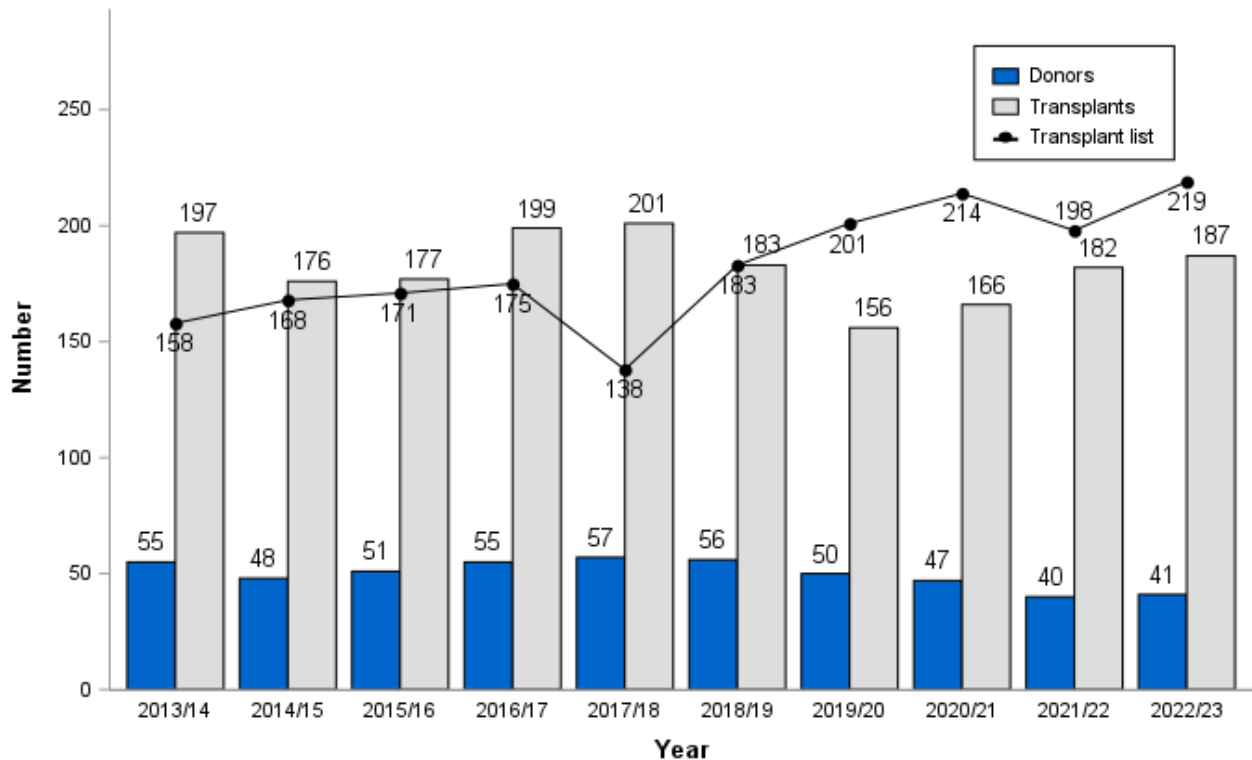
# **Paediatric and Neonatal Deceased Donation Data and Meeting Booklet**

**June 2023**



## Trends in paediatric organ donation and transplantation

Deceased paediatric donors (<18 years), transplants and active transplant list in the UK, 1 April 2013 to 31 March 2023

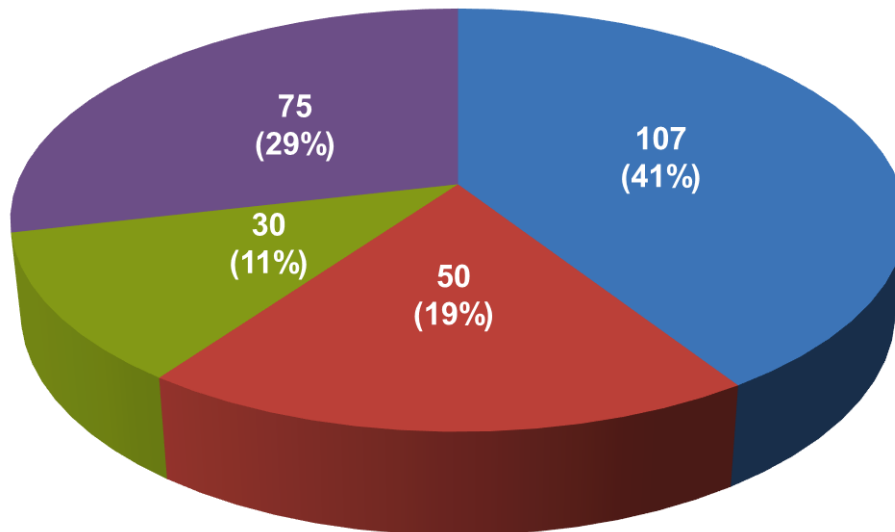


Data obtained from UK Transplant Registry. Remainder of report includes data, from the UK Potential Donor Audit, on all potential, eligible and actual donors in paediatric intensive care units and paediatric cardiothoracic intensive care units in the UK, unless stated otherwise.

## UK PICU donation by age group



### Potential DBD/Eligible DCD donors

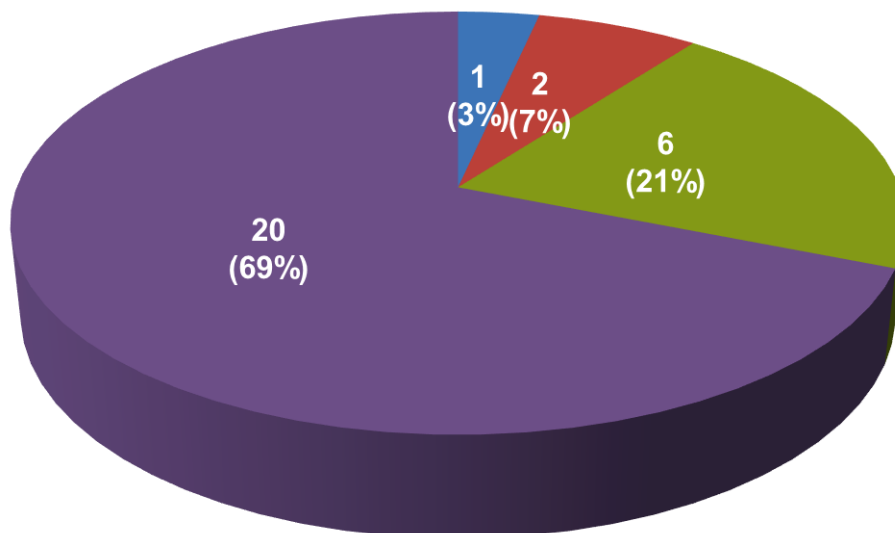


1 January 2022 - 31 December 2022

**Potential donors after brainstem death (DBD)** are defined as patients who have neurological death suspected by meeting all of the following criteria: apnoea, coma from known aetiology and unresponsive, ventilated, fixed pupils, no cough or gag reflex. Excluding those for whom cardiac arrest occurred despite resuscitation, brain stem reflexes returned.

**Eligible donors after circulatory death (DCD)** are defined as patients who had treatment withdrawn and death was anticipated within four hours, with no absolute medical contraindications to solid organ donation.

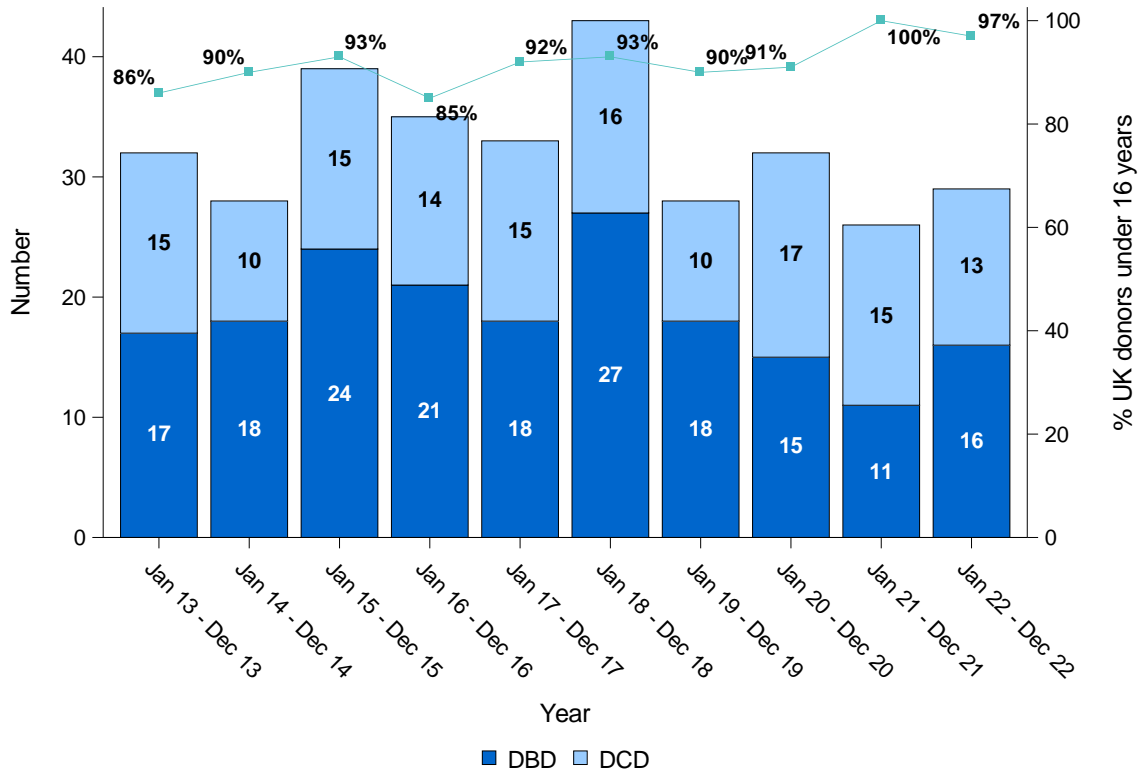
### Actual donors



1 January 2022 - 31 December 2022

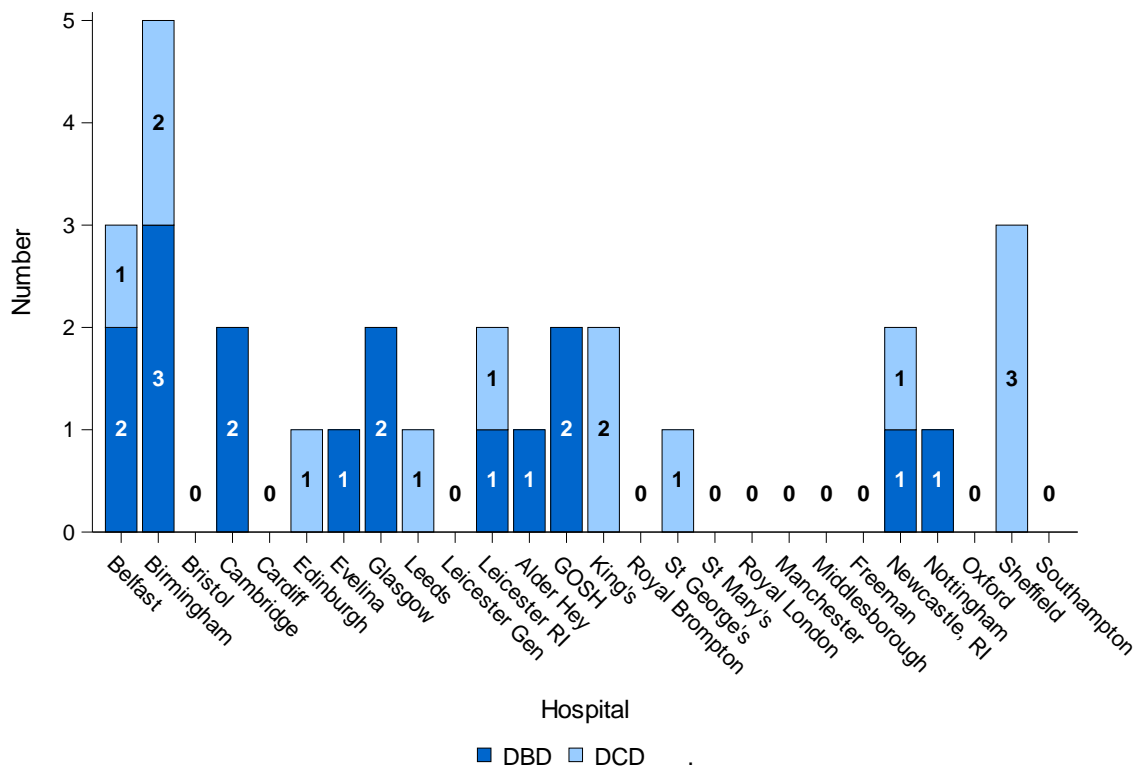
## PICU actual deceased donors

1 January 2013 - 31 December 2022



## PICU actual deceased donors by hospital

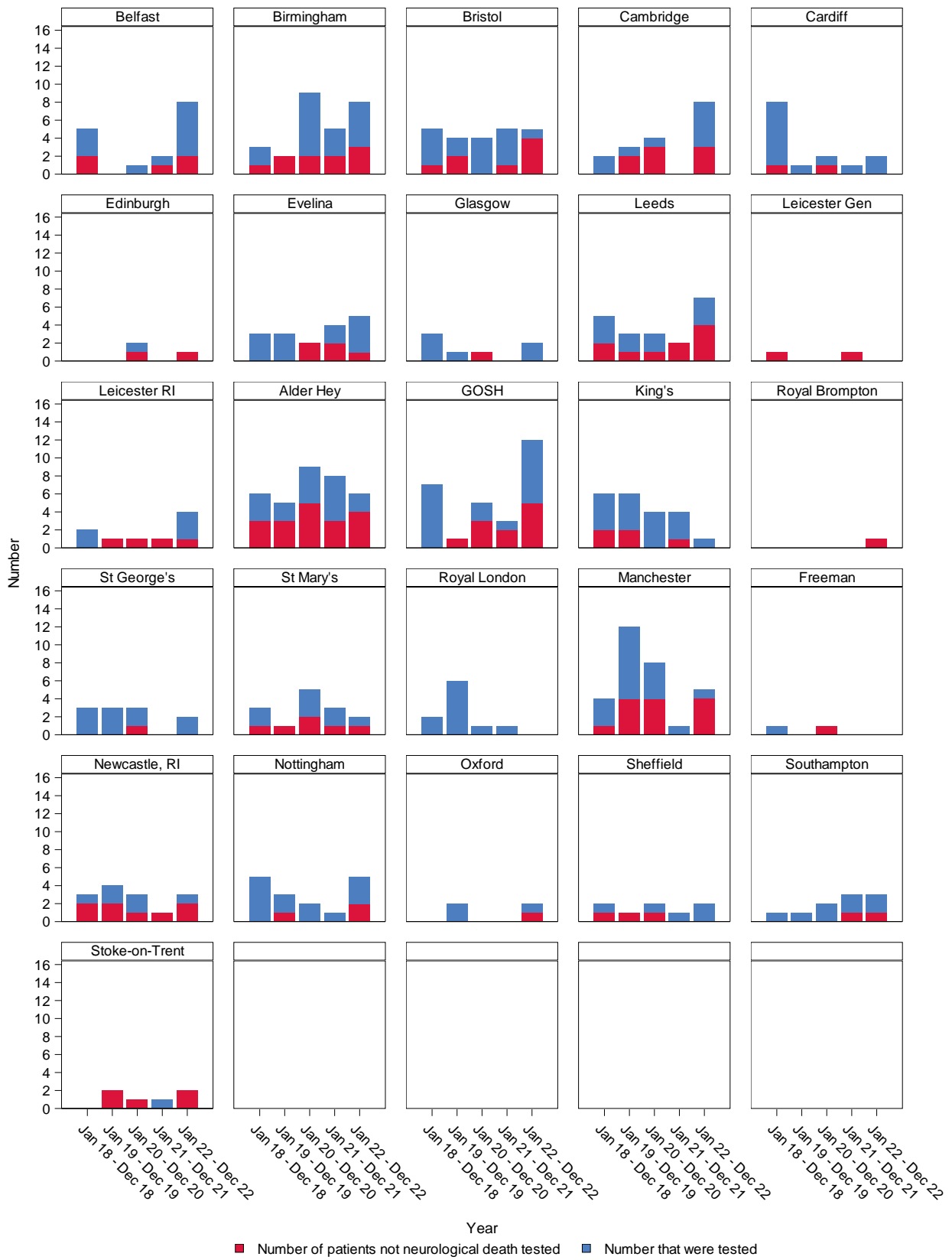
1 January 2022 - 31 December 2022



Between 1 January 2022 and 31 December 2022 there was 1 donor under the age of 16 who donated outside a PICU (1 DBD and 0 DCD).

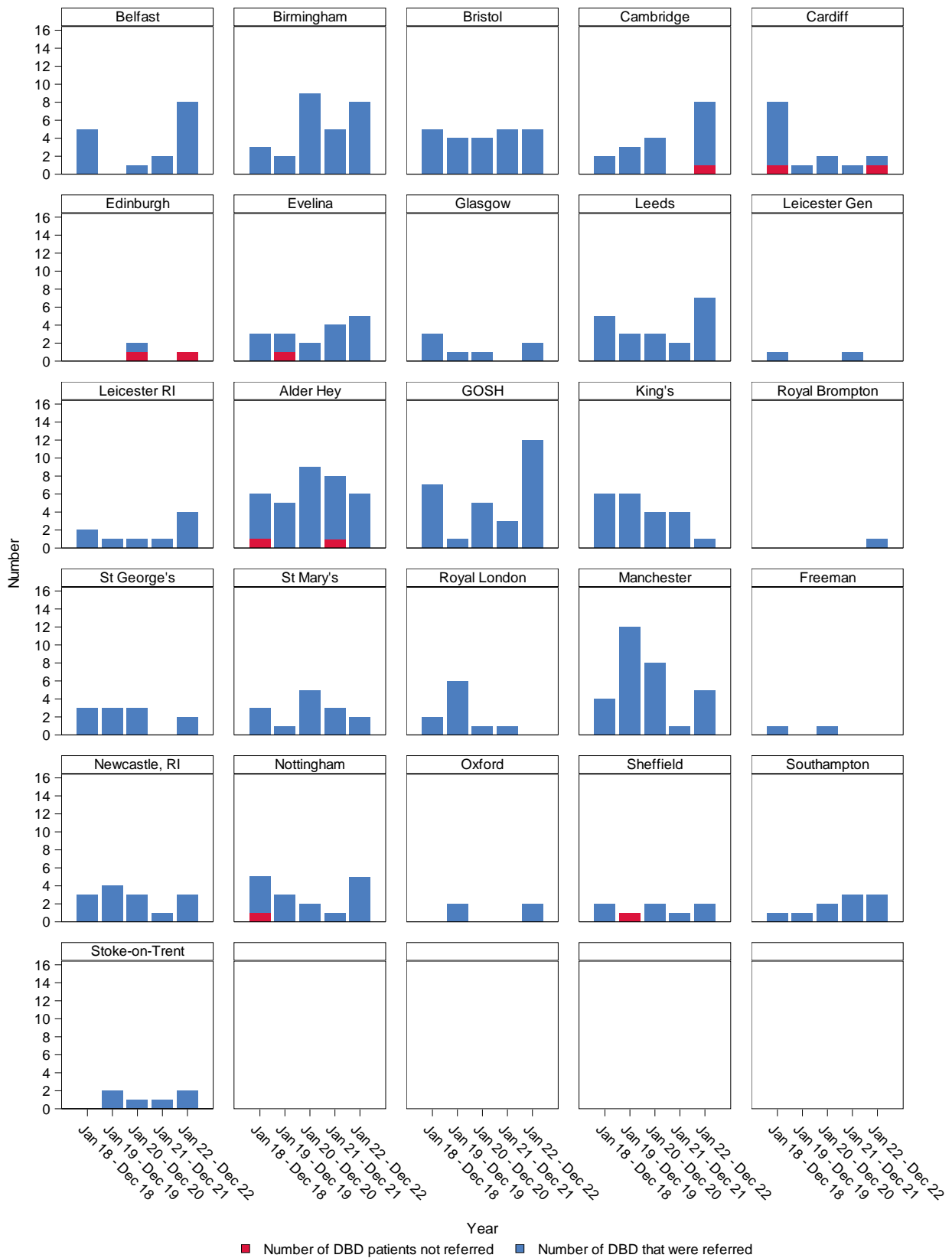
# PICUs neurological death testing

1 January 2018 - 31 December 2022



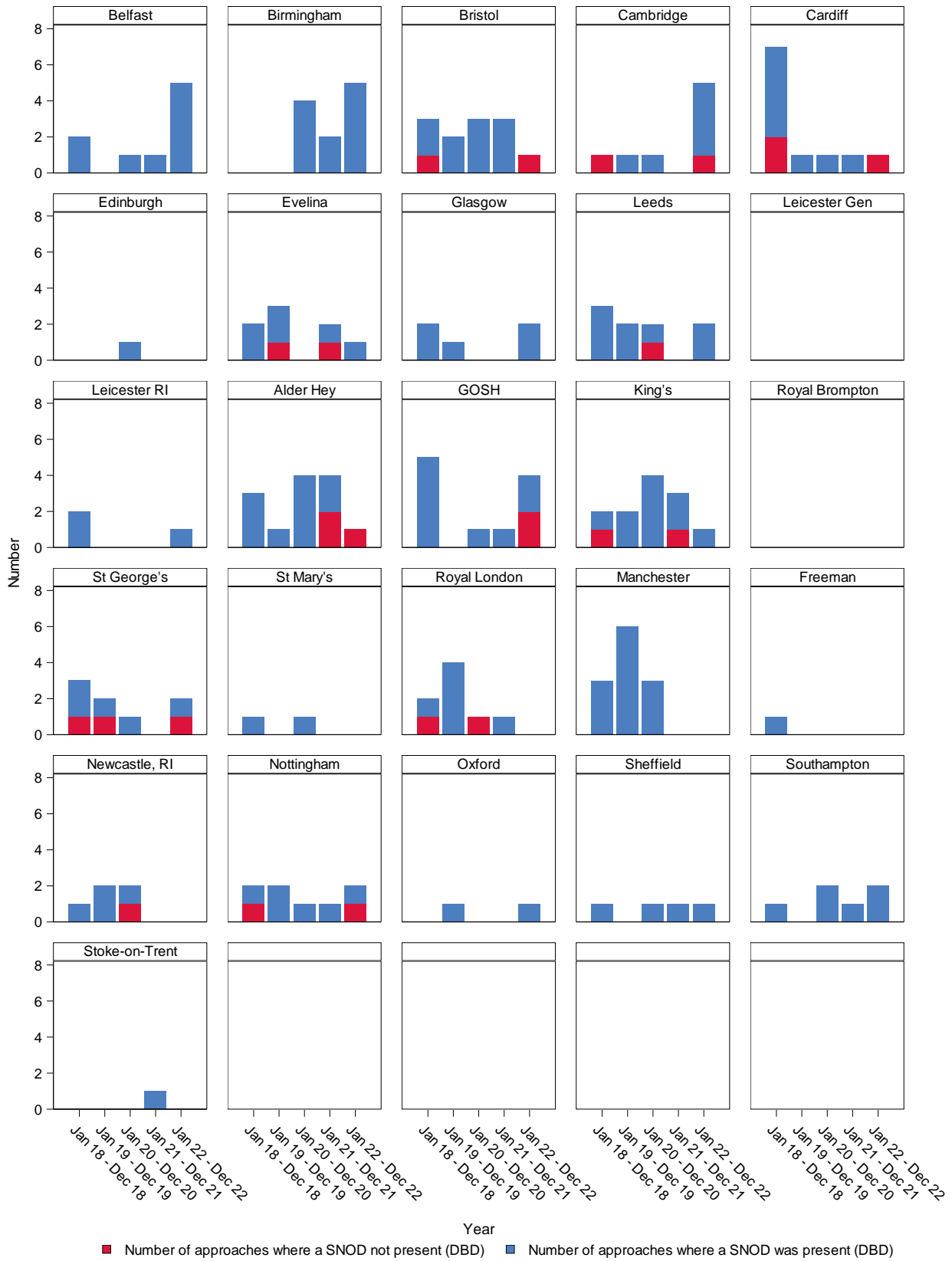
# PICUs DBD referral

1 January 2018 - 31 December 2022



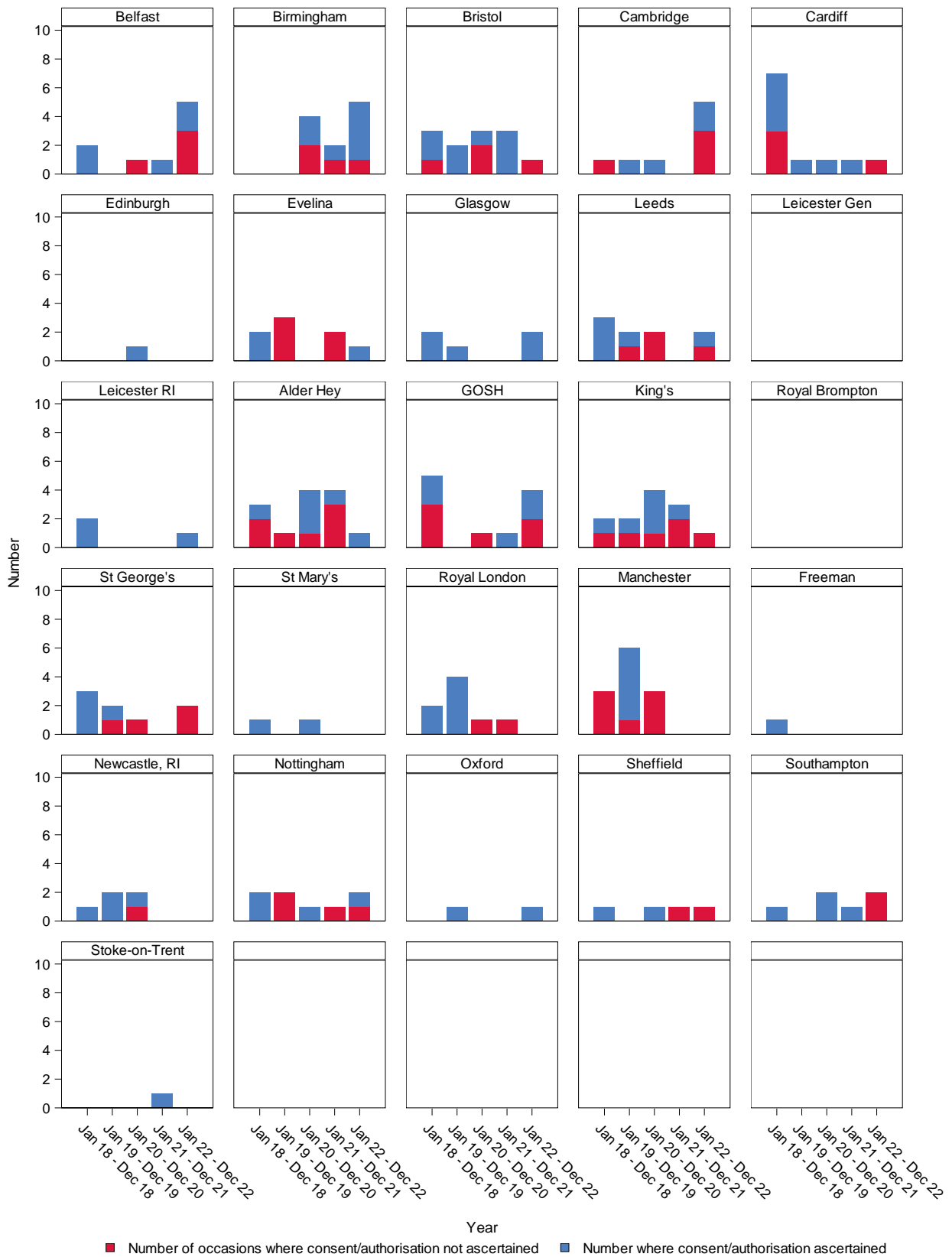
# PICUs DBD SNOD presence

1 January 2018 - 31 December 2022



# PICUs DBD consent/authorisation

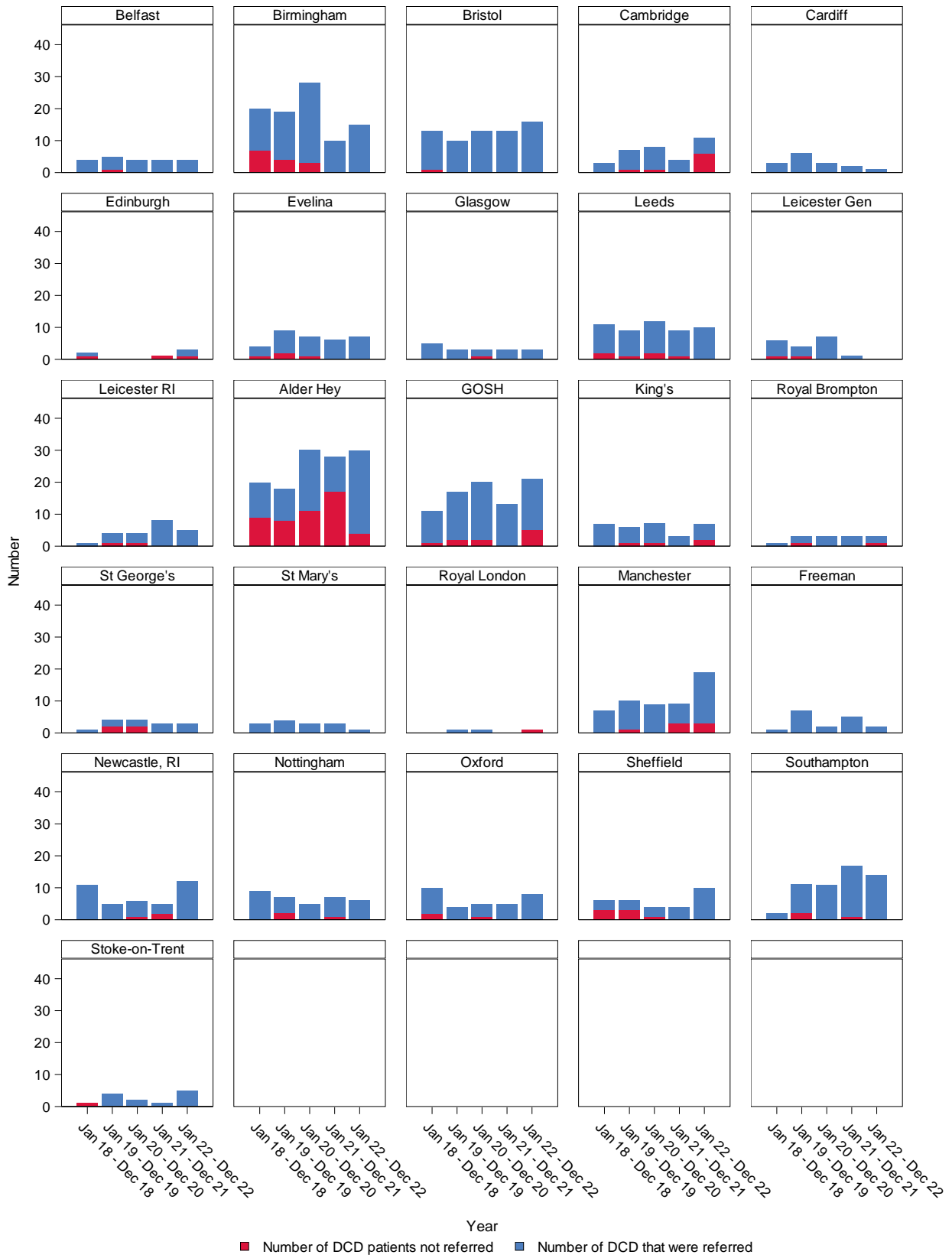
1 January 2018 - 31 December 2022





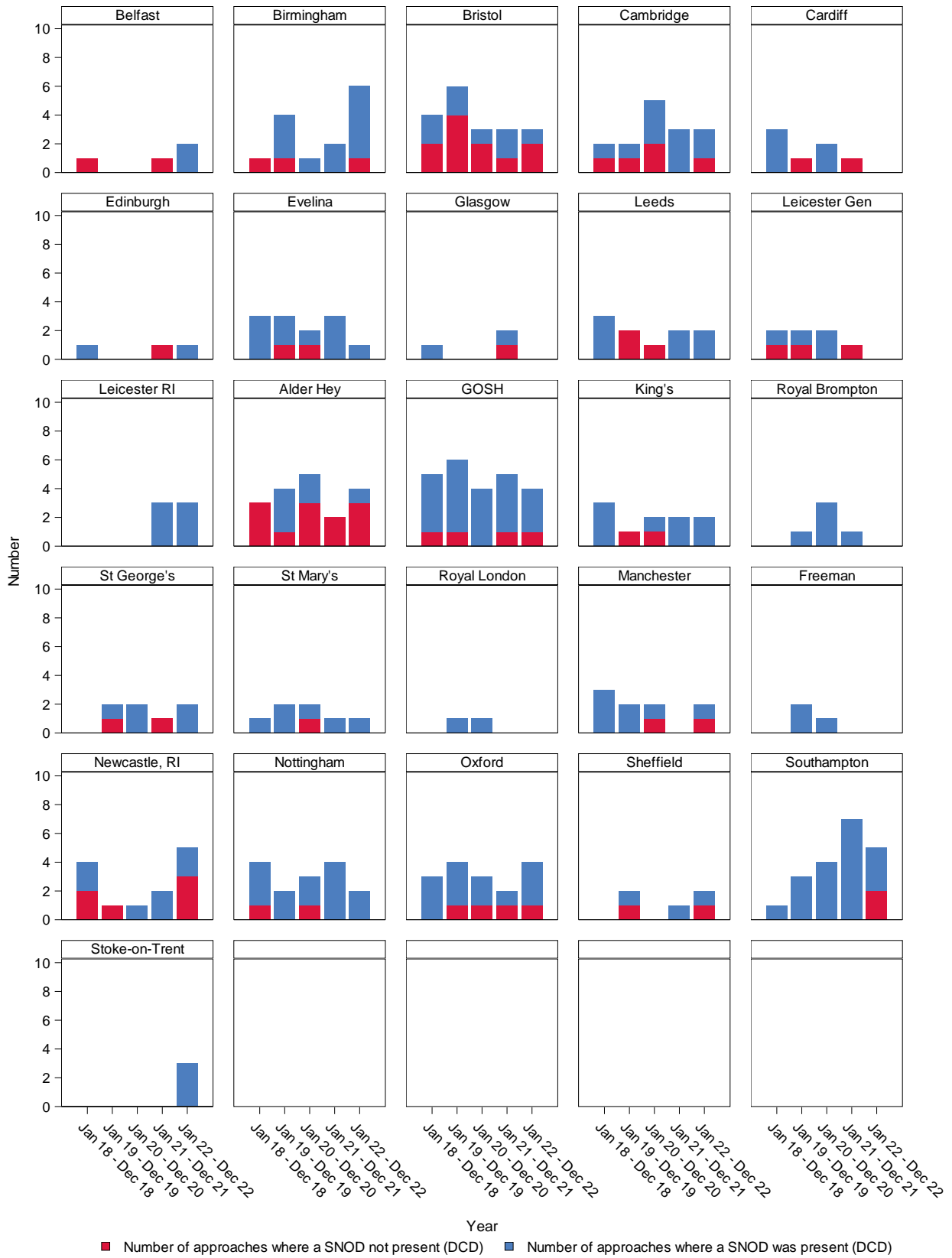
# PICUs DCD referral

1 January 2018 - 31 December 2022



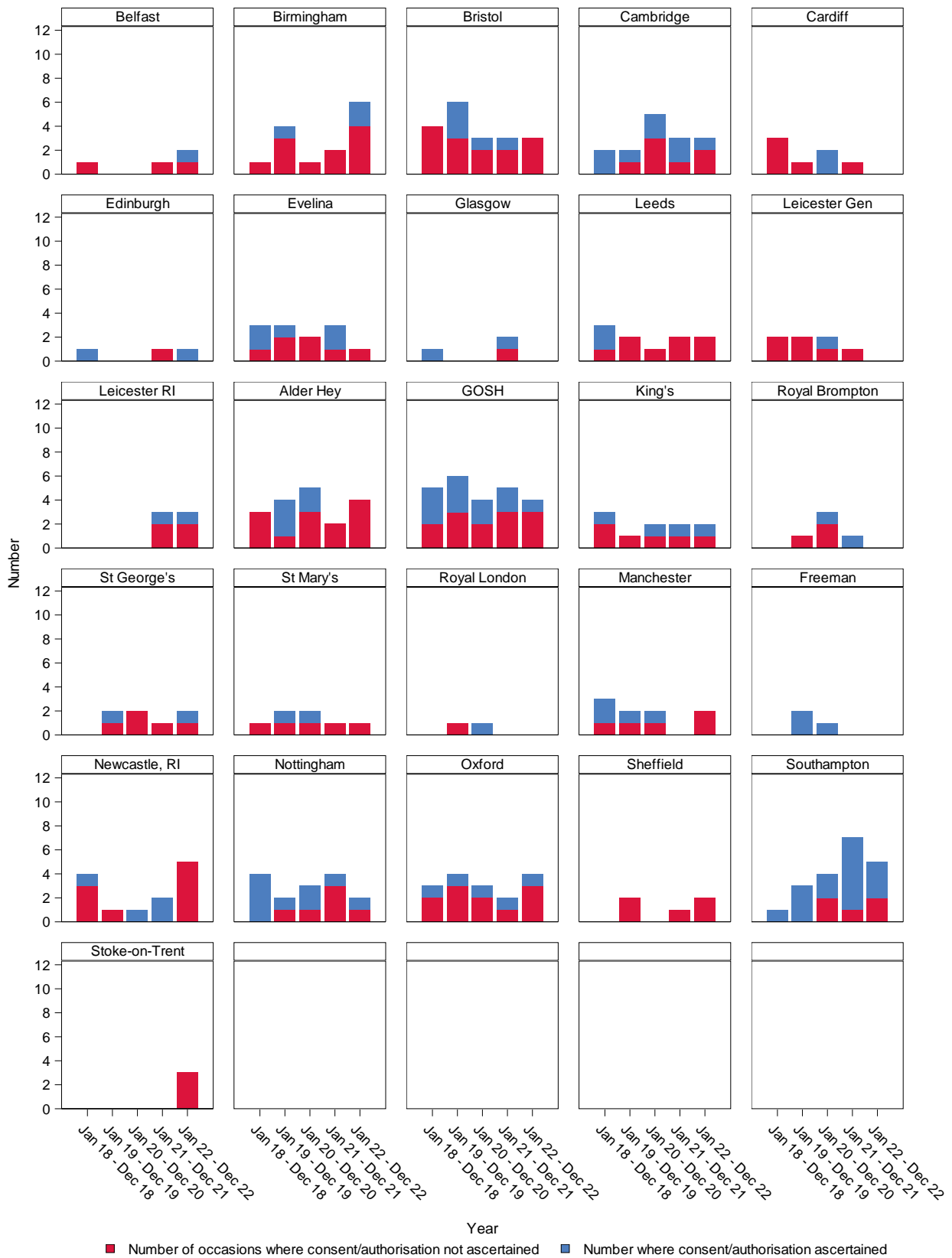
# PICUs DCD SNOD presence

1 January 2018 - 31 December 2022



# PICUs DCD consent/authorisation rate

1 January 2018 - 31 December 2022



## PICU: Key numbers

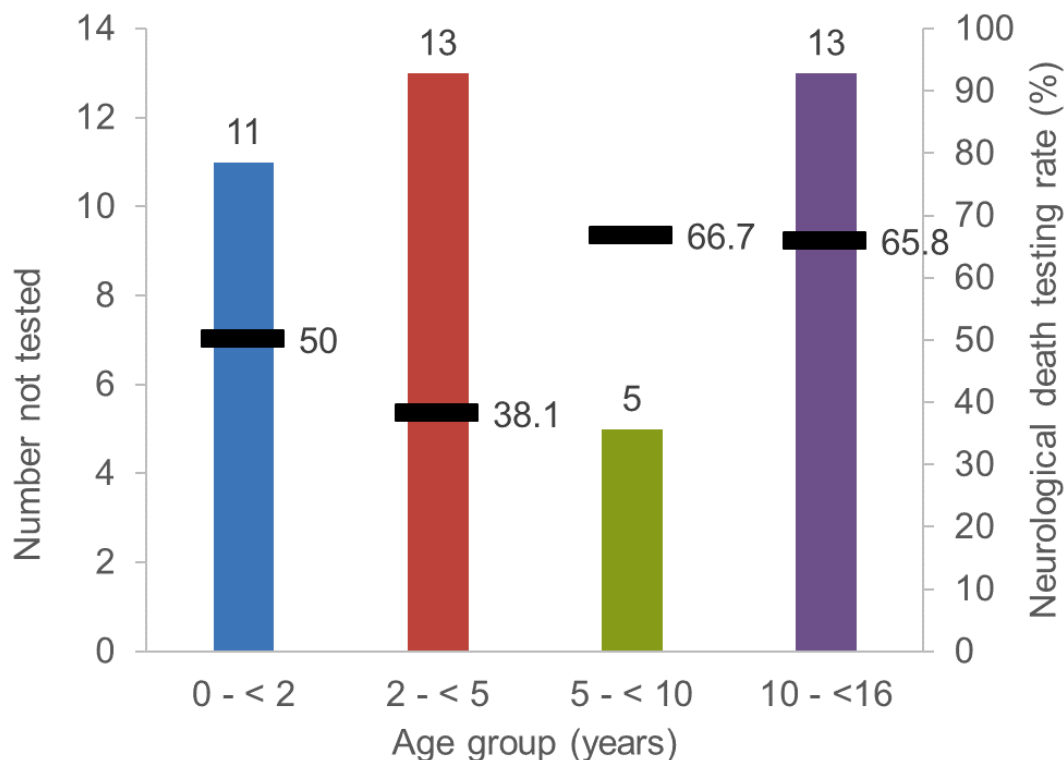
1 January 2022 - 31 December 2022

Hospital	Number not neurological death tested (Total suspected neurological death)	Number not referred (Total meeting referral criteria)		Number of donation decision conversations without SNOD present (Total donation decision conversations)		Number where consent/authorisation not ascertained (Total donation decision conversations)	
		DBD	DCD	DBD	DCD	DBD	DCD
BELFAST, ROYAL BELFAST HOSPITAL FOR SICK CHILDREN	2 (8)	0 (8)	0 (4)	0 (5)	0 (2)	3 (5)	1 (2)
BIRMINGHAM, BIRMINGHAM CHILDREN'S HOSPITAL	3 (8)	0 (8)	0 (15)	0 (5)	1 (6)	1 (5)	4 (6)
BRISTOL, BRISTOL ROYAL HOSPITAL FOR CHILDREN	4 (5)	0 (5)	0 (16)	1 (1)	2 (3)	1 (1)	3 (3)
CAMBRIDGE, ADDENBROOKE'S HOSPITAL	3 (8)	1 (8)	6 (11)	1 (5)	1 (3)	3 (5)	2 (3)
CARDIFF, UNIVERSITY OF WALES HOSPITAL	0 (2)	1 (2)	0 (1)	1 (1)	0 (0)	1 (1)	0 (0)
EDINBURGH, ROYAL HOSPITAL FOR SICK CHILDREN	1 (1)	1 (1)	1 (3)	0 (0)	0 (1)	0 (0)	0 (1)
EVELINA CHILDRENS HOSPITAL	1 (5)	0 (5)	0 (7)	0 (1)	0 (1)	0 (1)	1 (1)
GLASGOW, THE ROYAL HOSPITAL FOR CHILDREN	0 (2)	0 (2)	0 (3)	0 (2)	0 (0)	0 (2)	0 (0)
LEEDS, LEEDS GENERAL INFIRMARY	4 (7)	0 (7)	0 (10)	0 (2)	0 (2)	1 (2)	2 (2)
LEICESTER, GLENFIELD GENERAL HOSPITAL	0 (0)	0 (0)	0 (0)	0 (0)	0 (0)	0 (0)	0 (0)
LEICESTER, LEICESTER ROYAL INFIRMARY	1 (5)	0 (5)	0 (5)	0 (2)	0 (3)	0 (2)	2 (3)
LIVERPOOL, ALDER HEY CHILDREN'S HOSPITAL	4 (6)	0 (6)	4 (30)	1 (1)	3 (4)	0 (1)	4 (4)
LONDON, GREAT ORMOND STREET HOSPITAL FOR CHILDREN	5 (12)	0 (12)	5 (22)	2 (4)	1 (5)	2 (4)	3 (5)
LONDON, KING'S COLLEGE HOSPITAL	0 (2)	0 (2)	2 (7)	0 (2)	0 (2)	1 (2)	1 (2)
LONDON, ROYAL BROMPTON HOSPITAL	1 (1)	0 (1)	1 (3)	0 (0)	0 (0)	0 (0)	0 (0)
LONDON, ST GEORGE'S HOSPITAL	0 (2)	0 (2)	0 (3)	1 (2)	0 (2)	2 (2)	1 (2)
LONDON, ST MARY'S HOSPITAL	1 (2)	0 (2)	0 (1)	0 (0)	0 (1)	0 (0)	1 (1)
LONDON, THE ROYAL LONDON HOSPITAL (WHITECHAPEL)	0 (0)	0 (0)	1 (1)	0 (0)	0 (0)	0 (0)	0 (0)
MANCHESTER, ROYAL MANCHESTER CHILDREN'S HOSPITAL	4 (5)	0 (5)	3 (19)	0 (0)	1 (2)	0 (0)	2 (2)
NEWCASTLE, FREEMAN HOSPITAL	0 (0)	0 (0)	0 (2)	0 (0)	0 (0)	0 (0)	0 (0)
NEWCASTLE, ROYAL VICTORIA INFIRMARY	2 (3)	0 (3)	0 (12)	0 (0)	3 (5)	0 (0)	5 (5)
NOTTINGHAM, NOTTINGHAM UNIVERSITY HOSPITALS QMC CAMPUS	2 (5)	0 (5)	0 (6)	1 (2)	0 (2)	1 (2)	1 (2)
OXFORD, JOHN RADCLIFFE HOSPITAL	1 (2)	0 (2)	0 (10)	0 (1)	1 (4)	0 (1)	3 (4)
SHEFFIELD, SHEFFIELD CHILDREN'S HOSPITAL	0 (2)	0 (2)	0 (10)	0 (1)	1 (2)	1 (1)	2 (2)
SOUTHAMPTON, SOUTHAMPTON UNIVERSITY HOSPITALS	1 (3)	0 (3)	0 (16)	0 (2)	2 (6)	2 (2)	2 (6)
STOKE-ON-TRENT, ROYAL STOKE UNIVERSITY HOSPITAL	2 (2)	0 (2)	0 (5)	0 (0)	0 (3)	0 (0)	3 (3)

Note that patients may appear in more than one group

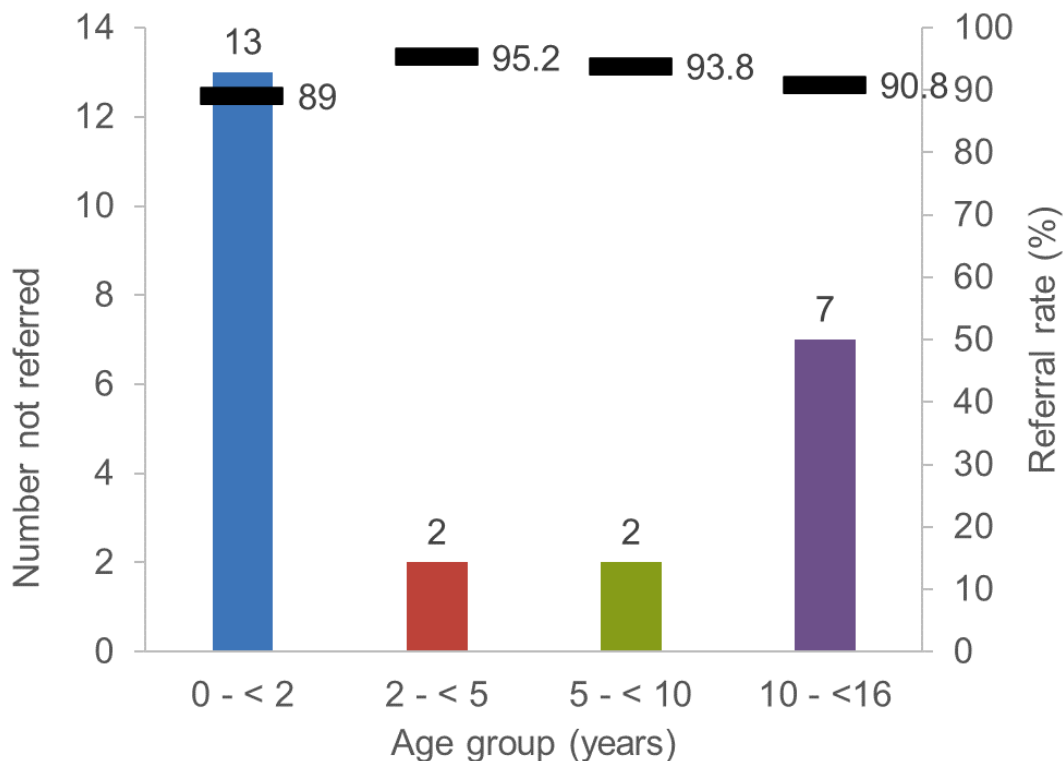
## Comparison of neurological death testing in PICUs by age group

1 January 2022 - 31 December 2022



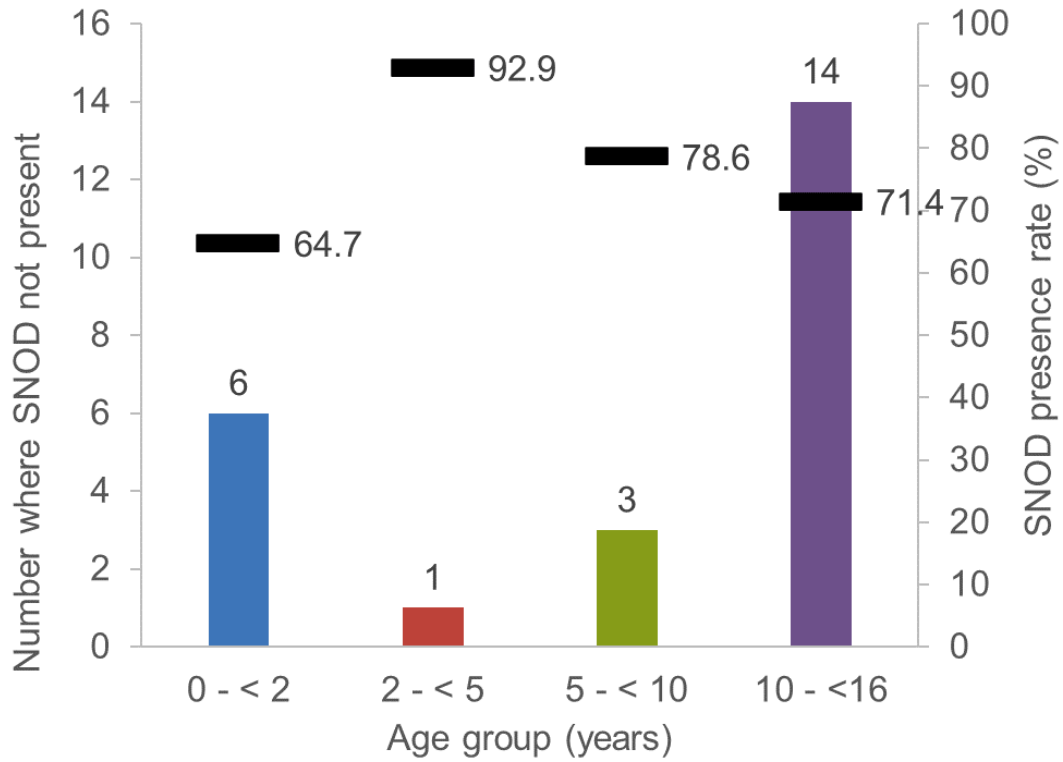
## Comparison of combined DBD and DCD referral in PICUs by age group

1 January 2022 - 31 December 2022



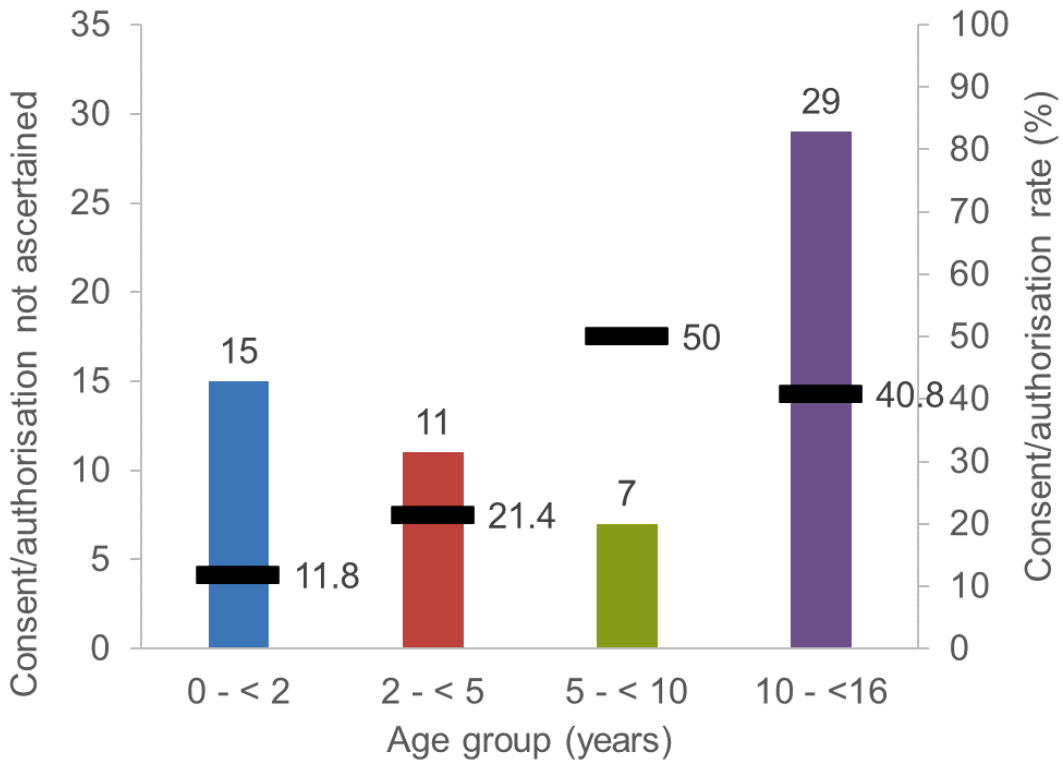
## Comparison of combined DBD and DCD SNOD presence in PICUs by age group

1 January 2022 - 31 December 2022



## Comparison of combined DBD and DCD consent/authorisation in PICUs by age group

1 January 2022 - 31 December 2022



## Neonatal data - all neonatal patients included in the Potential Donor Audit

1 January 2022 - 31 December 2022

Age in months	Audited patient deaths	Patients meeting DBD or DCD referral criteria	Patients referred	Eligible DBD or DCD donors	Consent\ Authorisation given by family	Actual donors
0	266	58	36	51	1	0
1	98	20	16	17	1	0

Note that not all neonatal intensive care units are included in the UK Potential Donor Audit, therefore the data presented do not capture the whole national neonatal donor potential.