

## NHS BLOOD AND TRANSPLANT

### LIVER ADVISORY GROUP

#### FOLLOW-UP FORM RETURN RATES REPORTED IN THE INTERIM REPORT ON LIVER TRANSPLANTATION

##### BACKGROUND

- 1 NHSBT use the information returned on the post-transplant follow-up forms to estimate post-transplant survival for specific demographics (e.g. 5 year risk-adjusted patient survival estimates by transplant centre). Concern was raised when the draft Annual Report on Liver Transplantation was circulated to transplant centres for review in July 2020 regarding the impact of low form return rates on patient survival estimates.
- 2 Form return rates are reported in the Annual Report on Liver Transplantation for both adult and paediatric deceased donor liver only transplants performed in the UK. This paper examines the form return rates for forms issued between 1 October 2021 – 30 September 2022.

##### METHODS

- 3 Data on transplant record forms for all deceased donor liver only transplants performed in the UK between 1 October 2021 and 30 September 2022 were extracted from the UK Transplant Registry on 20 October 2022 along with all follow-up forms issued to transplant centres for deceased donor liver only transplants performed between 1 April 2012 and 31 March 2022.

##### RESULTS

- 4 **Table 1** shows the form return rates for forms issued between 1 October 2021 and 30 September 2022 by age group, transplant centre and follow-up period. For adult transplants, all but nine transplant record forms and thirteen 3-month follow-up forms had been returned to NHSBT. The overall form return rate for the one-year follow-up form was 58% and ranged between 36% and 100%. The overall form return rate for the lifetime follow-up forms (2 years or over) was 51% and ranged between 22% and 86%.
- 5 For paediatric transplants, all transplant records had been returned to NHSBT and all but one 3-month follow-up forms had been returned to NHSBT. The overall form return rate for the one-year form was 73% and ranged between 67% and 82%. The overall form return rate for the lifetime follow-up forms (2 years or over) was 80% and ranged between 55% and 100% for the three paediatric centres.
- 6 **Figure 1** show the overall follow-up form return rates for forms issued between 1 October 2021 and 30 September 2022 by individual form type for both adult and paediatric transplant centres. **Figure 2** shows the form return rates by transplant centre and form type for adult transplants while **Figure 3** shows the equivalent for paediatric transplants.
- 7 **Table 2** shows the form return rates for forms issued between 1 October 2021 and 30 September 2022 by age group, transplant centre and month of form issue. For adult transplants, the overall form return rate throughout the year was 60% and ranged between 15% and 96%. For paediatric transplants, the overall form return rate throughout the year was 71.5% and ranged between 3% and 98%.

- 8 **Figure 4** show the overall follow-up form return rates for forms issued between 1 October 2021 and 30 September 2022 by month of form issue for both adult and paediatric transplant centres. **Figure 5** shows the form return rates by transplant centre and month of form issue for adult transplants while **Figure 6** shows the equivalent for paediatric transplants.

**ACTION**

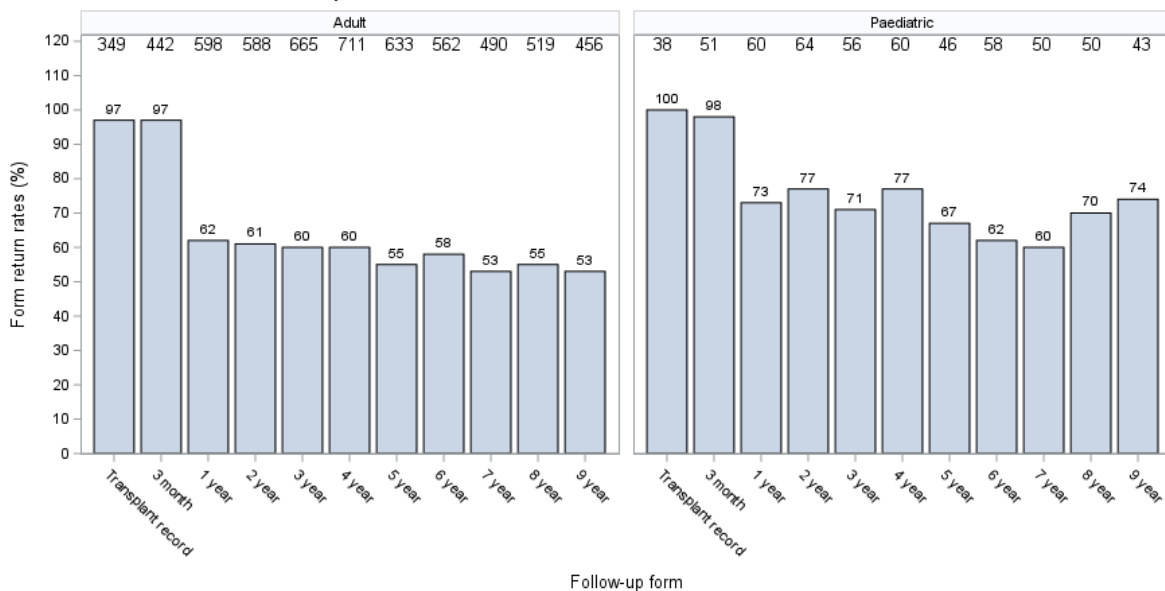
- 9 Centres are asked to ensure follow-up is up-to-date to enable us to accurately monitor liver transplantation.

**Suzie Phillips and Rhiannon Taylor**  
**Statistics and Clinical Research**

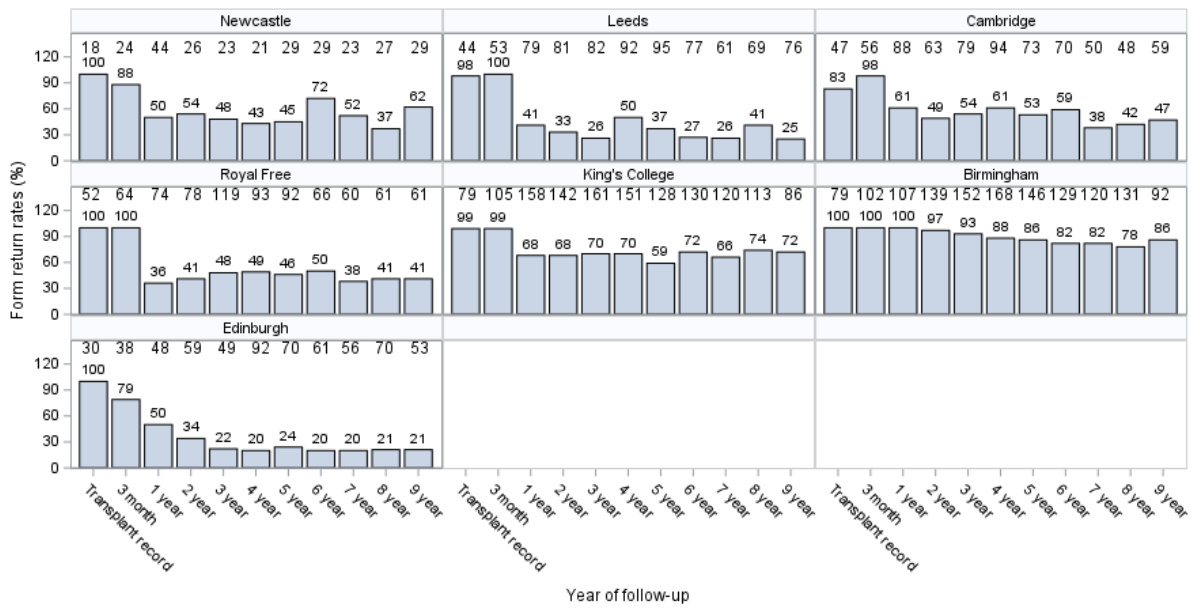
**October 2022**

**Table 1 Form return rates for first deceased donor liver only transplants by follow-up period, 1 October 2021 to 30 September 2022 as at 20 October 2022**

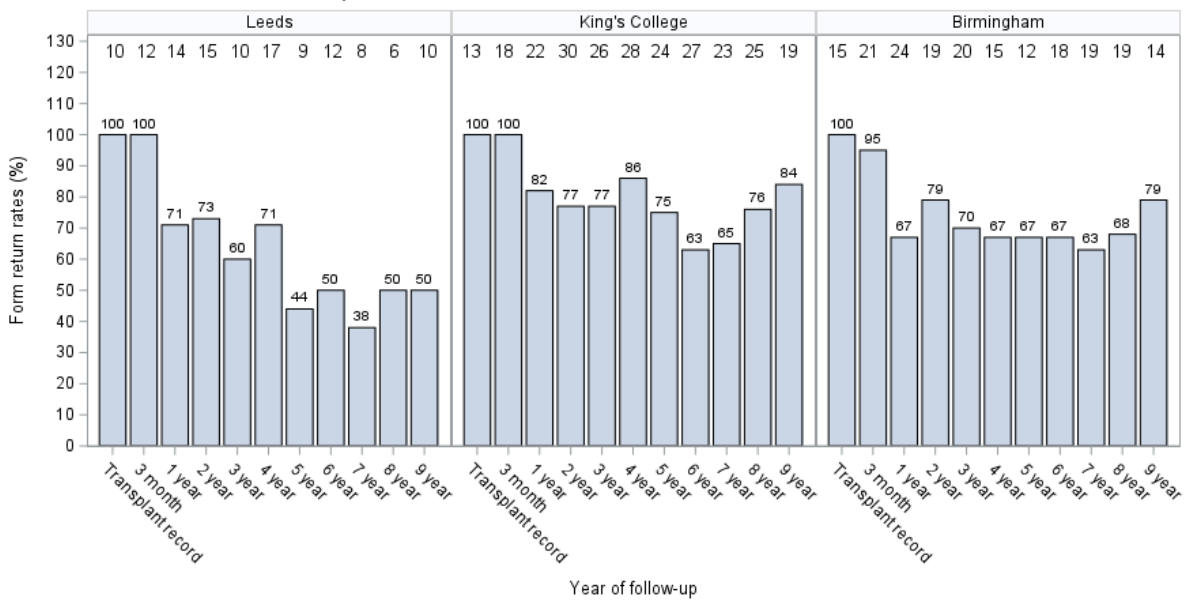
Centre	Transplant record		3 month follow-up		1 year follow-up		Lifetime follow-up		
	N	% Returned	N	% Returned	N	% Returned	N	% Returned	
<b>Adult</b>									
Newcastle	18	100	24	88	44	50	219	53	
Leeds	44	98	53	100	79	41	669	32	
Cambridge	47	83	56	98	88	61	560	51	
Royal Free	52	100	64	100	74	36	665	44	
King's College	79	99	105	99	158	68	1088	68	
Birmingham	79	100	102	100	107	100	1136	86	
Edinburgh	30	100	38	79	48	50	546	22	
<b>Total</b>	<b>349</b>	<b>97</b>	<b>442</b>	<b>97</b>	<b>598</b>	<b>62</b>	<b>4883</b>	<b>56</b>	
<b>Paediatric</b>									
Newcastle	-	-	-	-	-	-	1	100	
Leeds	10	100	12	100	14	71	93	55	
Cambridge	-	-	-	-	-	-	1	100	
King's College	13	100	18	100	22	82	216	75	
Birmingham	15	100	21	95	24	67	148	70	
<b>Total</b>	<b>38</b>	<b>100</b>	<b>51</b>	<b>98</b>	<b>60</b>	<b>73</b>	<b>459</b>	<b>69</b>	

**Figure 1 Form return rates for first deceased donor liver only transplants, by age group and follow-up period 1 October 2021 to 30 September 2022 as at 20 October 2022**

**Figure 2 Form return rates for first adult deceased donor liver only transplants, by transplant centre and follow-up period, 1 October 2021 to 30 September 2022 as at 20 October 2022**

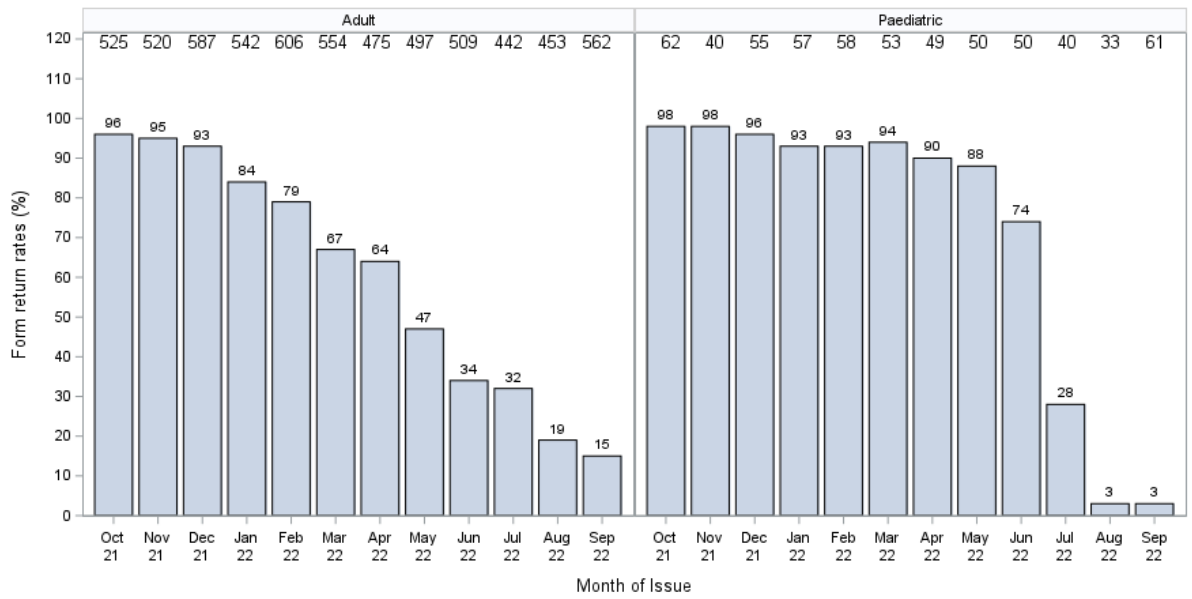


**Figure 3 Form return rates for first paediatric deceased donor liver only transplants, by transplant centre and follow-up period, 1 October 2021 to 30 September 2022 as at 20 October 2022**

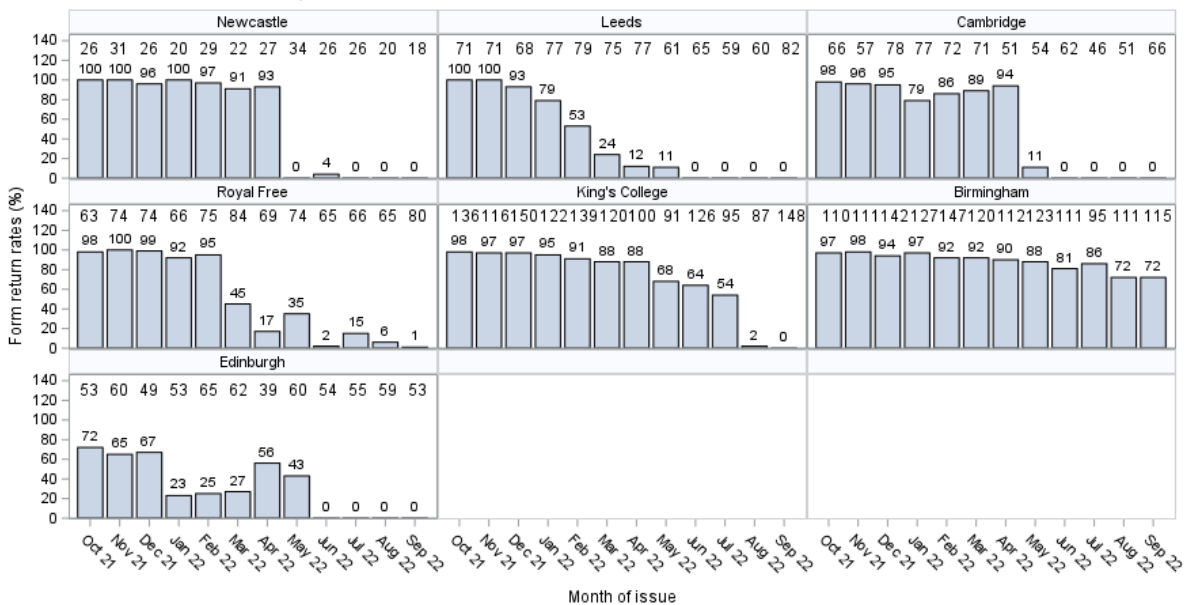


<b>Table 2 Form return rates for first deceased donor liver only transplants by issue month of form, 1 October 2020 to 30 September 2021 as at 29 October 2021</b>																								
Centre	Oct 21		Nov 21		Dec 21		Jan 22		Feb 22		Mar 22		Apr 22		May 22		Jun 22		Jul 22		Aug 22		Sep 22	
	N	%	N	%	N	%	N	%	N	%	N	%	N	%	N	%	N	%	N	%	N	%	N	%
<b>Adult</b>																								
Newcastle	26	100	31	100	26	96	20	100	29	97	22	91	27	93	34	0	26	4	26	0	20	0	18	0
Leeds	71	100	71	100	68	93	77	79	79	53	75	24	77	12	61	11	65	0	59	0	60	0	82	0
Cambridge	66	98	57	96	78	95	77	79	72	86	71	89	51	94	54	11	62	0	46	0	51	0	66	0
Royal Free	63	98	74	100	74	99	66	92	75	95	84	45	69	17	74	35	65	2	66	15	65	6	80	1
King's College	136	98	116	97	150	97	122	95	139	91	120	88	100	88	91	68	126	64	95	54	87	2	148	0
Birmingham	110	97	111	98	142	94	127	97	147	92	120	92	112	90	123	88	111	81	95	86	111	72	115	72
Edinburgh	53	72	60	65	49	67	53	23	65	25	62	27	39	56	60	43	60	43	55	0	59	0	53	0
<b>Total</b>	<b>525</b>	<b>96</b>	<b>520</b>	<b>96</b>	<b>587</b>	<b>93</b>	<b>542</b>	<b>84</b>	<b>606</b>	<b>79</b>	<b>554</b>	<b>67</b>	<b>475</b>	<b>64</b>	<b>497</b>	<b>47</b>	<b>509</b>	<b>34</b>	<b>442</b>	<b>32</b>	<b>453</b>	<b>19</b>	<b>562</b>	<b>15</b>
<b>Paediatric</b>																								
Newcastle	-	-	-	-	-	-	-	-	-	-	-	-	1	100	-	-	-	-	-	-	-	-	-	-
Leeds	10	90	11	91	13	92	15	87	9	78	11	82	12	67	14	57	6	50	11	36	8	0	9	0
Cambridge	1	100	-	-	-	-	-	-	-	-	-	-	-	-	-	-	-	-	-	-	-	-	-	-
King's College	27	100	19	100	23	96	27	96	25	96	23	100	26	96	17	100	25	84	17	35	10	0	20	0
Birmingham	24	100	10	100	19	100	15	93	24	96	19	95	10	100	19	100	19	68	12	8	15	7	22	9
<b>Total</b>	<b>62</b>	<b>98</b>	<b>40</b>	<b>98</b>	<b>55</b>	<b>96</b>	<b>57</b>	<b>93</b>	<b>58</b>	<b>93</b>	<b>53</b>	<b>94</b>	<b>49</b>	<b>90</b>	<b>50</b>	<b>88</b>	<b>50</b>	<b>74</b>	<b>40</b>	<b>28</b>	<b>33</b>	<b>3</b>	<b>61</b>	<b>3</b>

**Figure 4 Form return rates for first deceased donor liver only transplants, by age group and month of issue 1 October 2021 to 30 September 2022 as at 20 October 2022**



**Figure 5 Form return rates for first adult deceased donor liver only transplants, by transplant centre and month of issue, 1 October 2021 to 30 September 2022 as at 20 October 2022**



**Figure 6 Form return rates for first paediatric deceased donor liver only transplants, by transplant centre and month of issue, 1 October 2021 to 30 September 2022 as at 20 October 2022**

