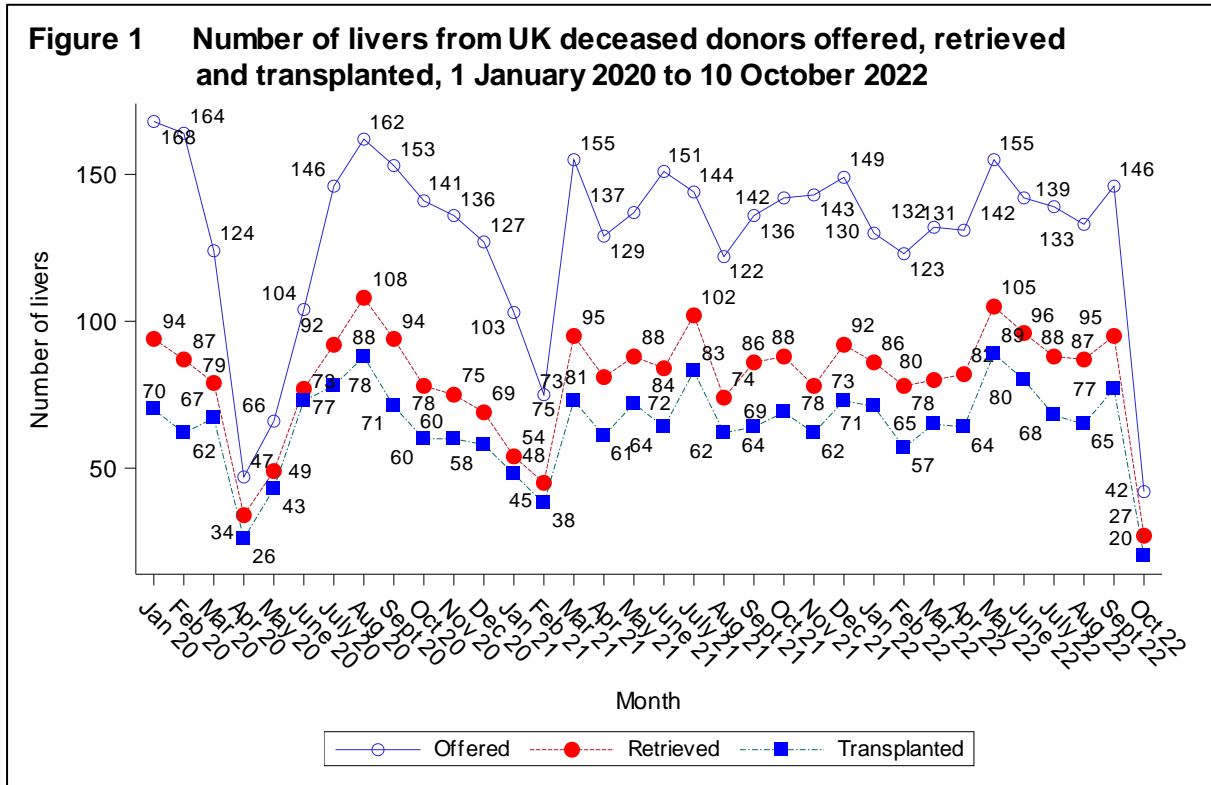


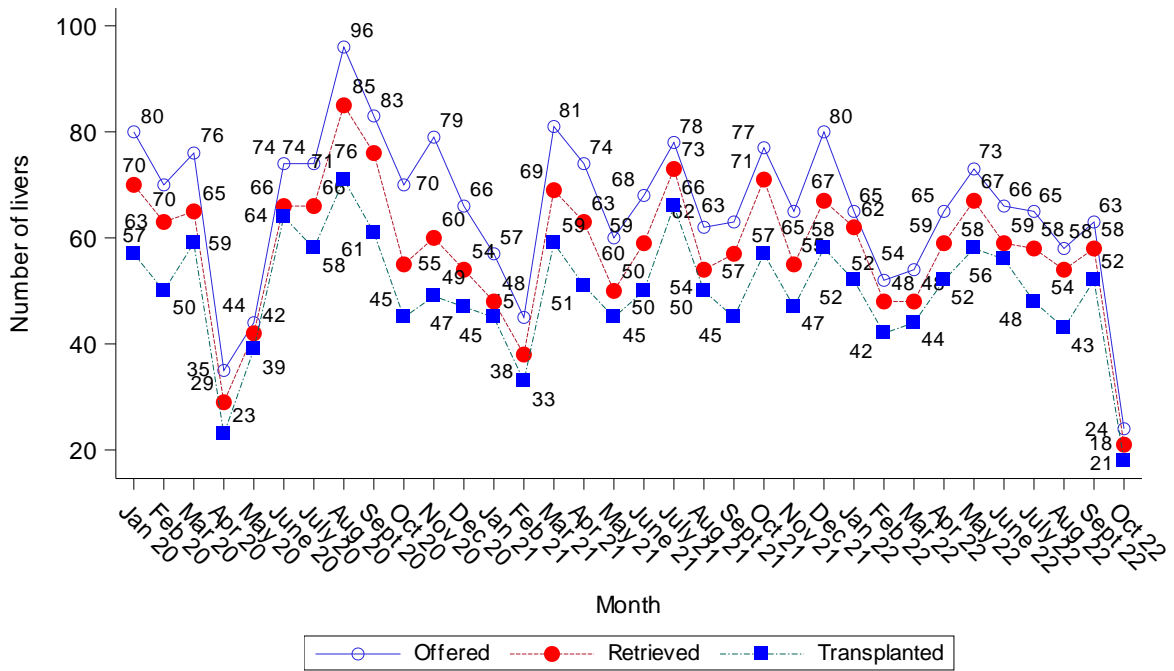
# NHS BLOOD & TRANSPLANT

## Liver offering outcome, 1 January 2020 to 10 October 2022

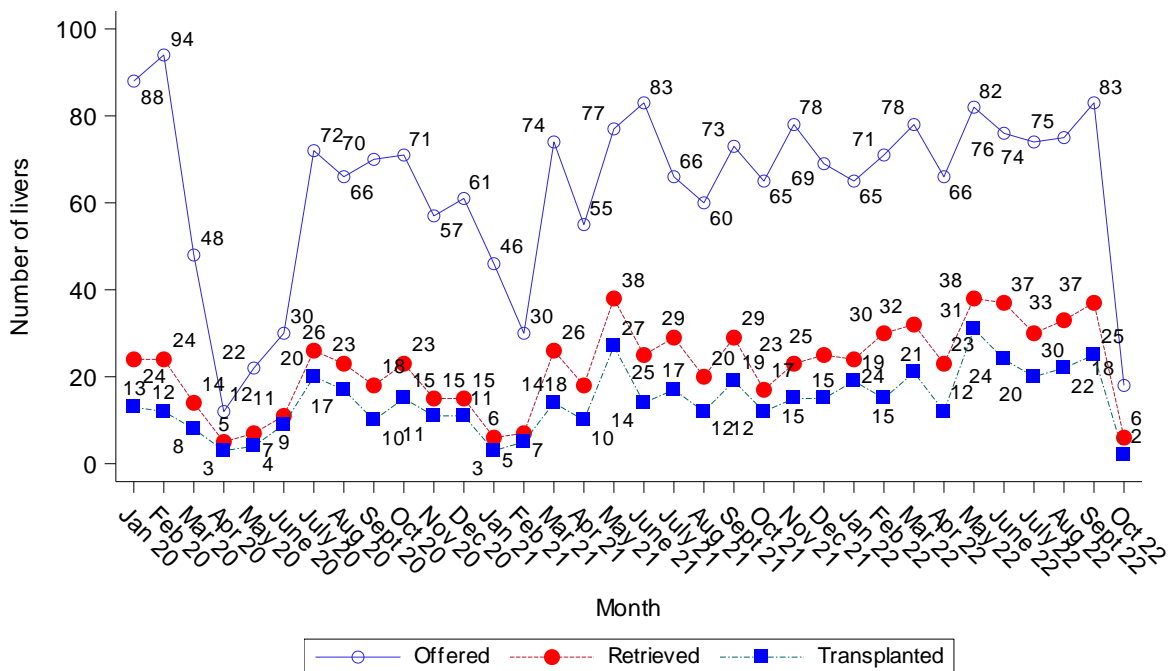
This report examines the offering outcome of livers offered for transplantation from UK deceased donors between 1 January 2020 and 10 October 2022 as recorded on the UK Transplant Registry on 13 October 2022.



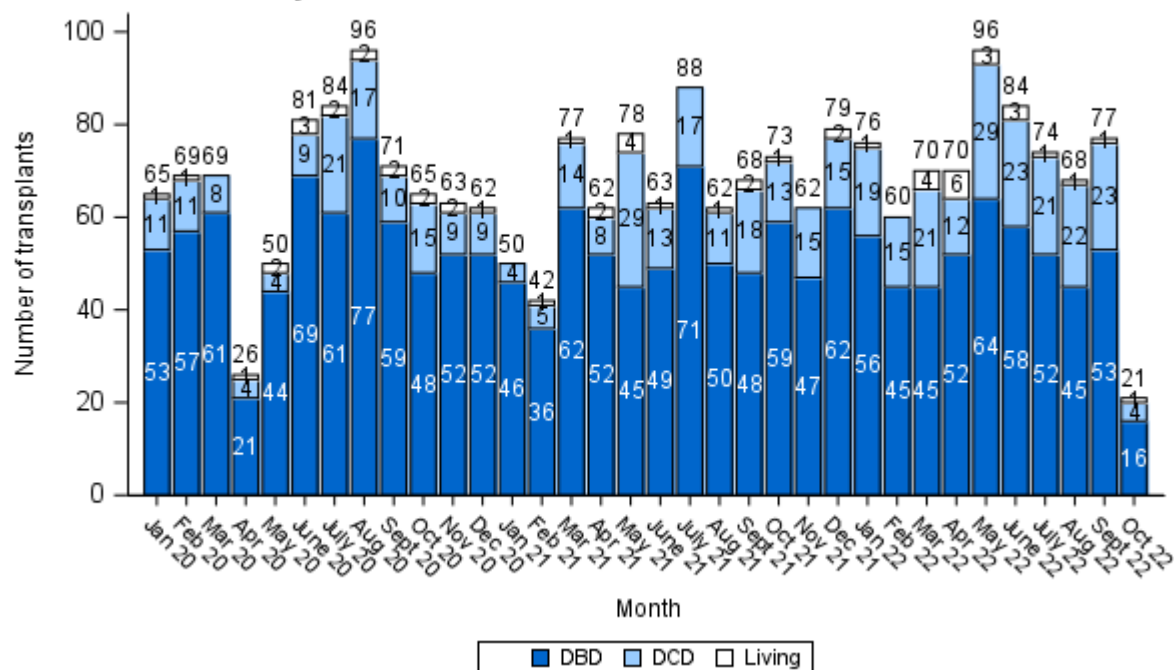
**Figure 2A** Number of livers from UK DBD donors offered, retrieved and transplanted, 1 January 2020 to 10 October 2022



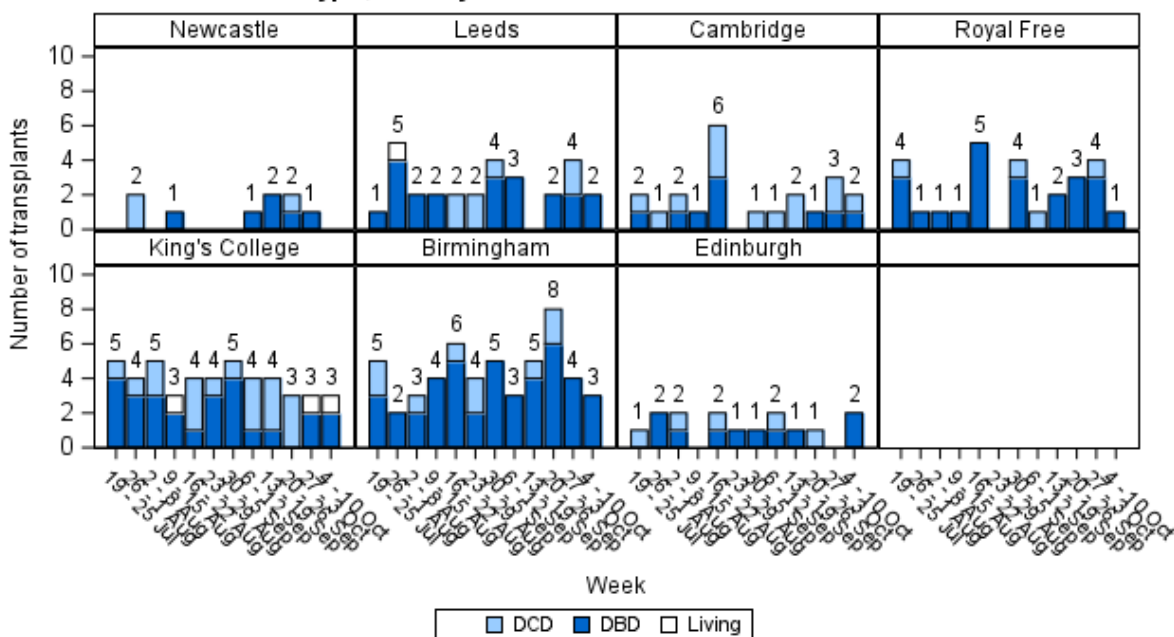
**Figure 2B** Number of livers from UK DCD donors offered, retrieved and transplanted, 1 January 2020 to 10 October 2022



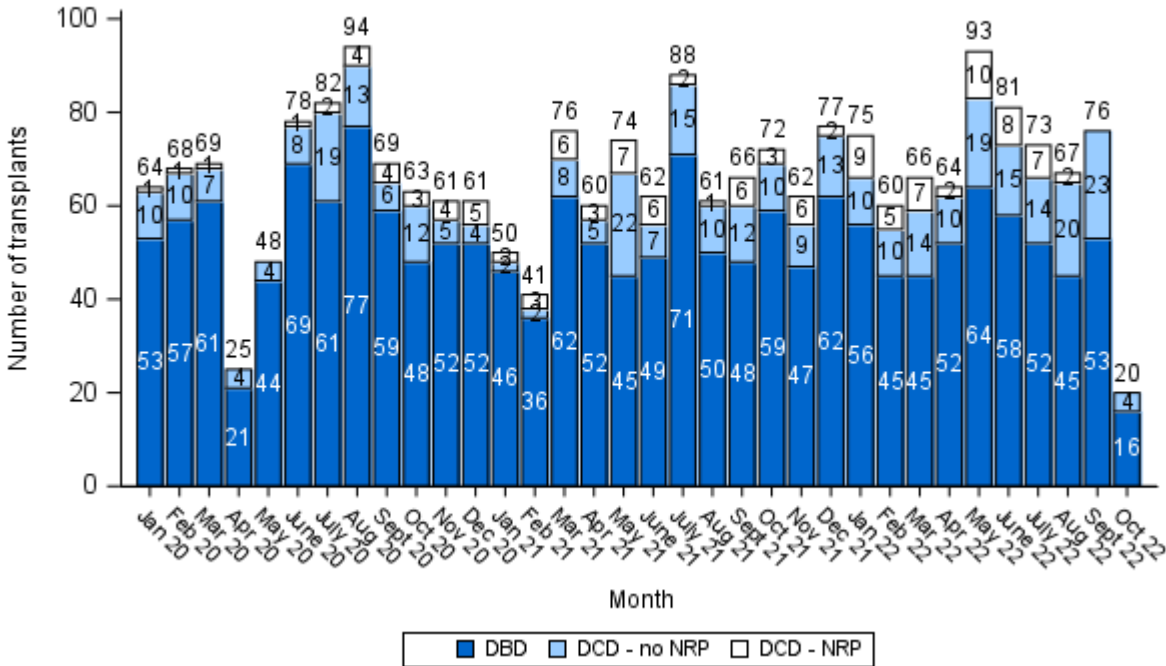
**Figure 3** Number of liver transplants performed in the UK, by donor type, 1 January 2020 to 10 October 2022



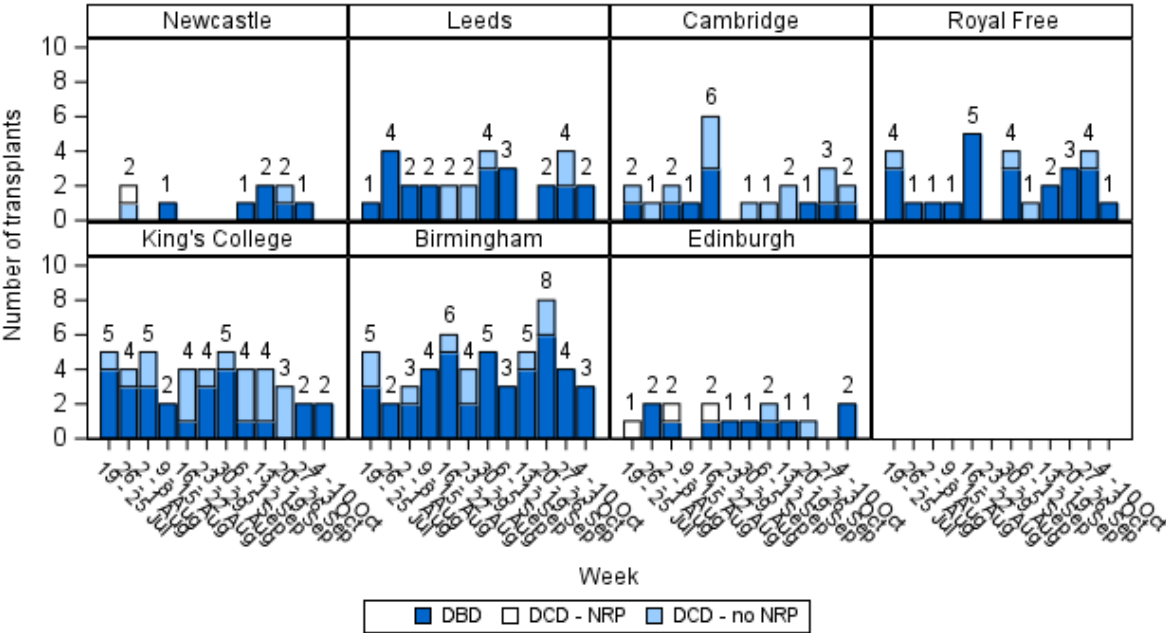
**Figure 4A** Number of liver transplants performed in the UK, by transplant centre and donor type, 19 July 2022 to 10 October 2022



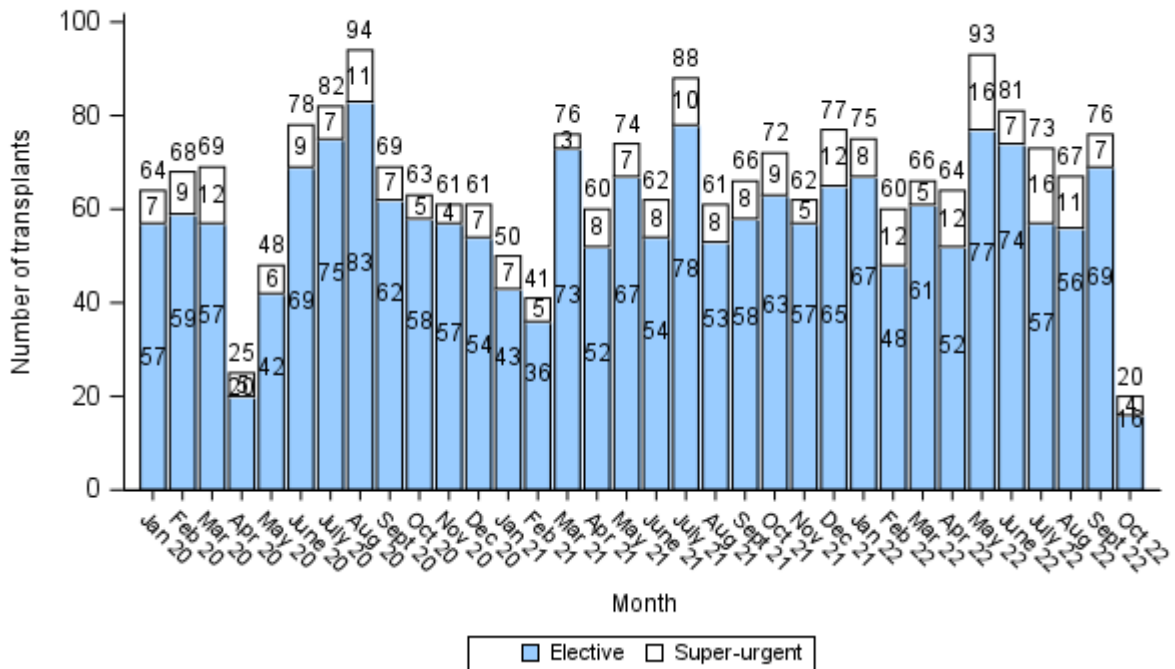
**Figure 5** Number of deceased donor liver transplants performed in the UK, by NRP, 1 January 2020 to 10 October 2022



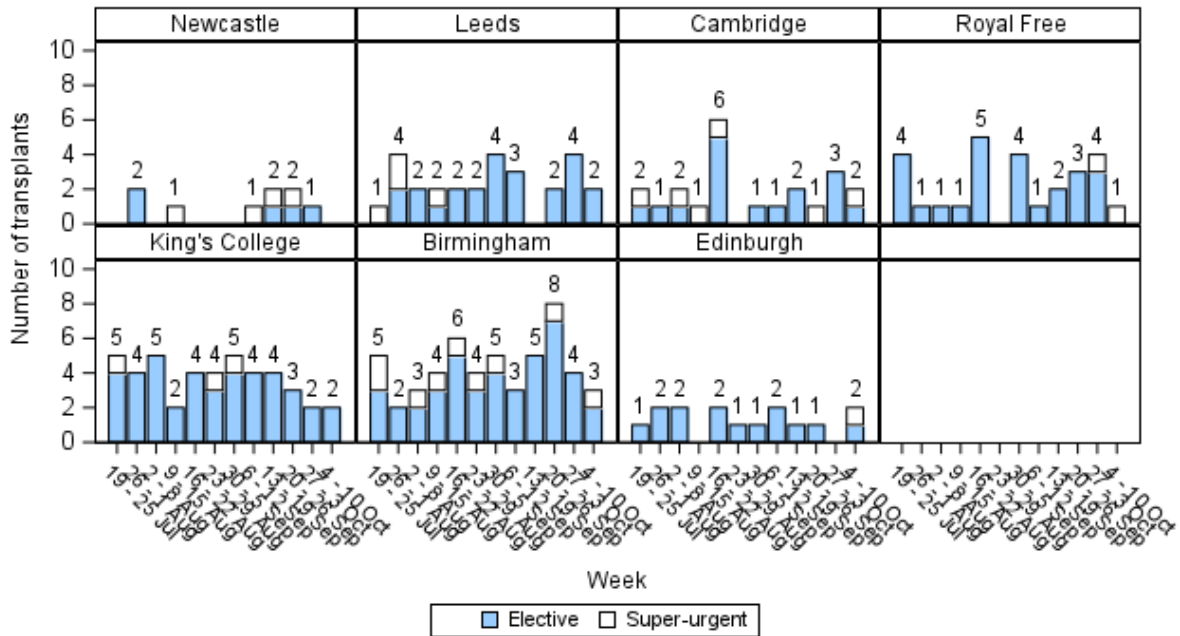
**Figure 6A** Number of deceased donor liver transplants performed in the UK, by transplant centre and NRP, 19 July 2022 to 10 October 2022



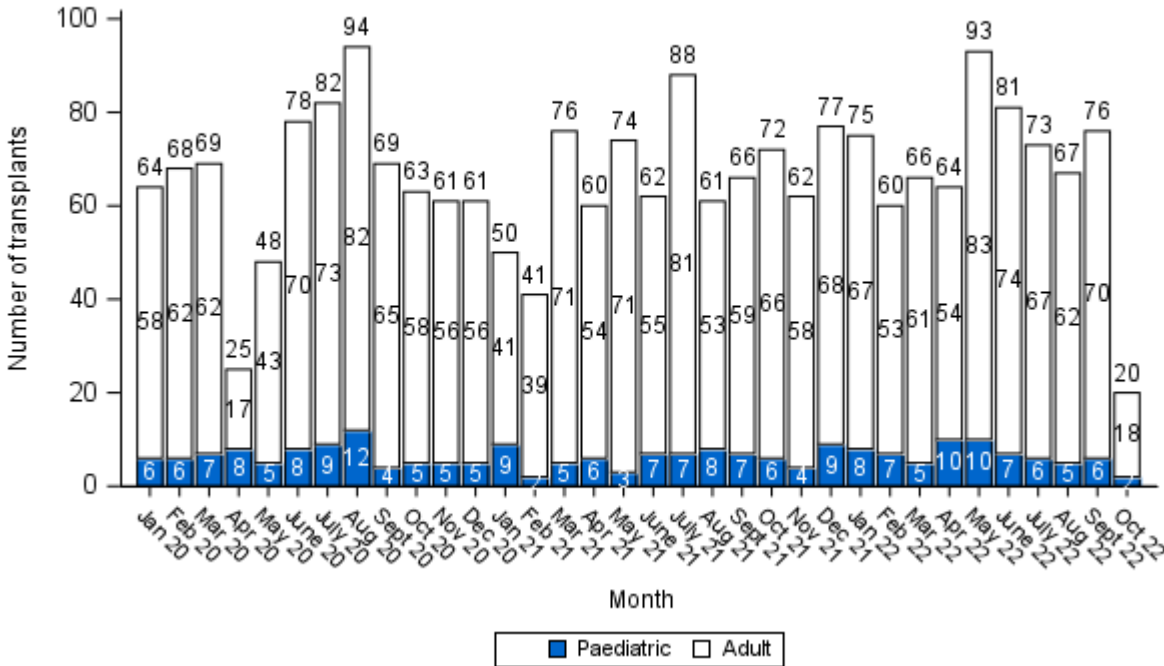
**Figure 7** Number of deceased donor liver transplants performed in the UK, by urgency status, 1 January 2020 to 10 October 2022



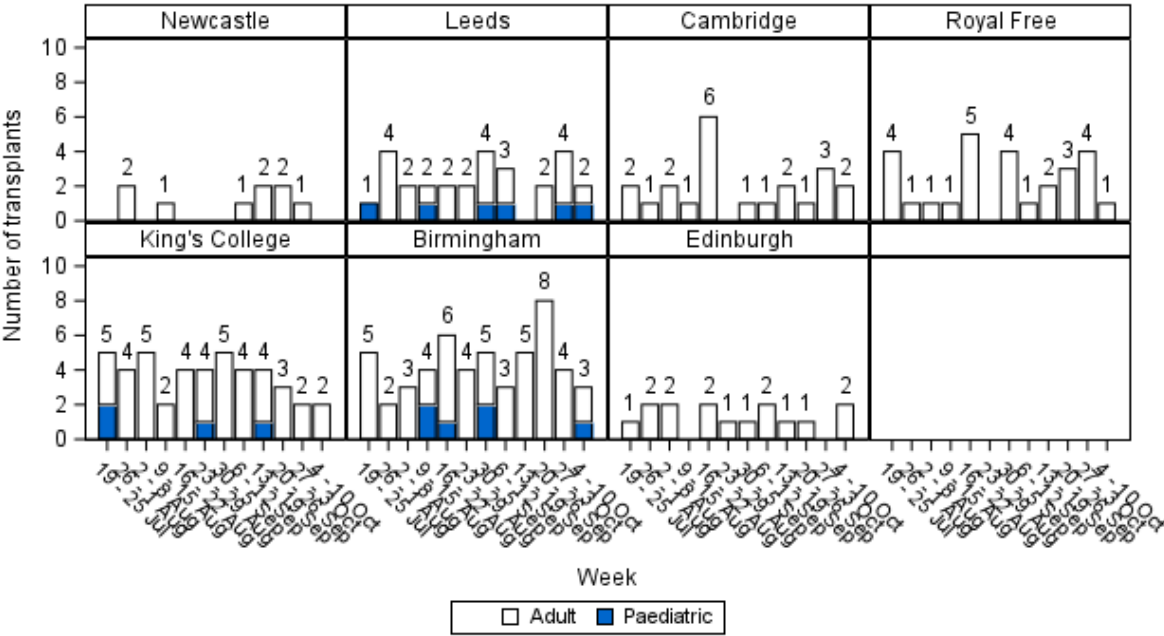
**Figure 8A** Number of deceased donor liver transplants performed in the UK, by transplant centre and urgency status, 19 July 2022 to 10 October 2022



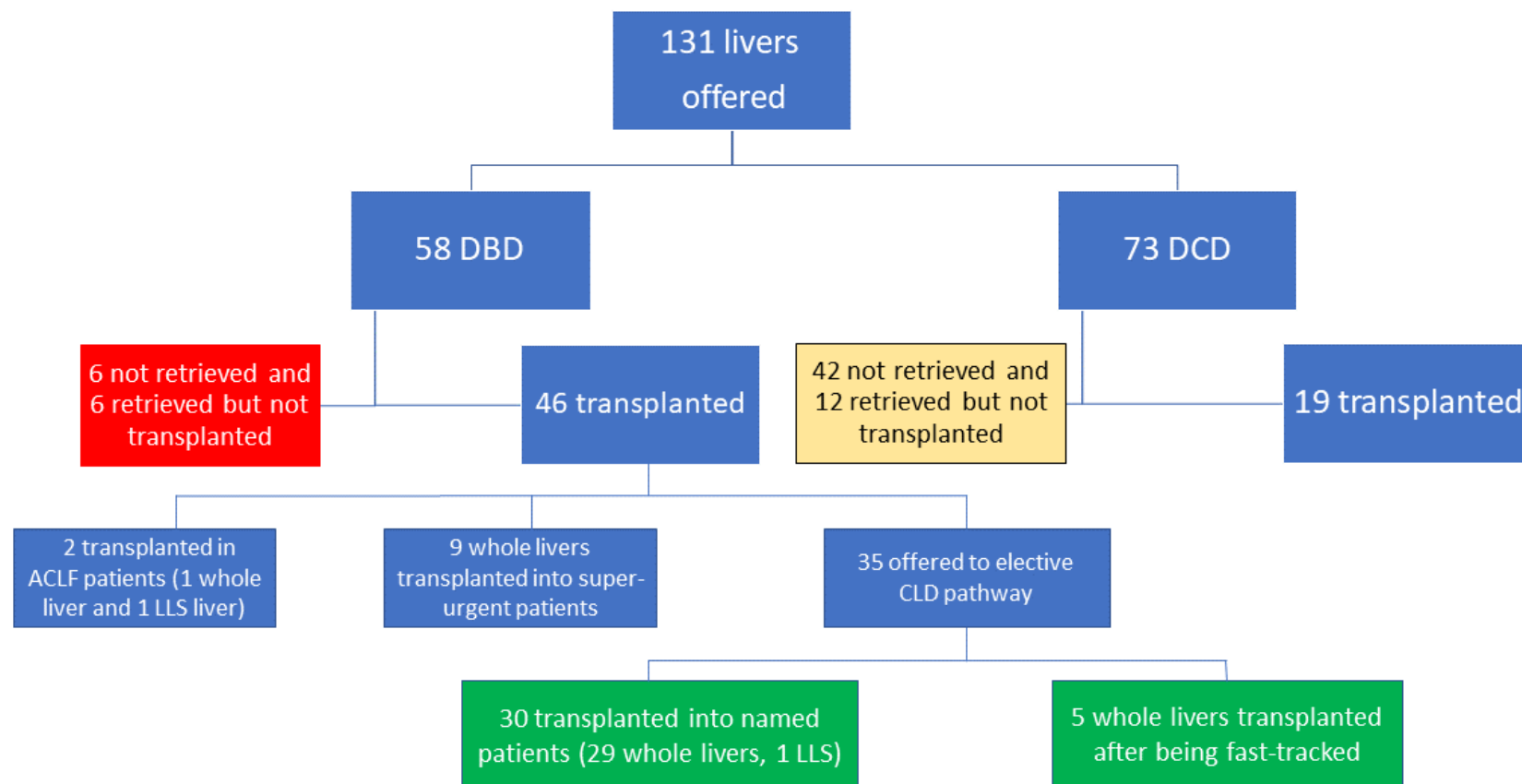
**Figure 9** Number of deceased donor liver transplants performed in the UK, by age group, 1 January 2020 to 10 October 2022



**Figure 10A** Number of deceased donor liver transplants performed in the UK, by transplant centre and age group, 19 July 2022 to 10 October 2022



# Liver offering outcomes 13<sup>th</sup> September – 10<sup>th</sup> October 2022

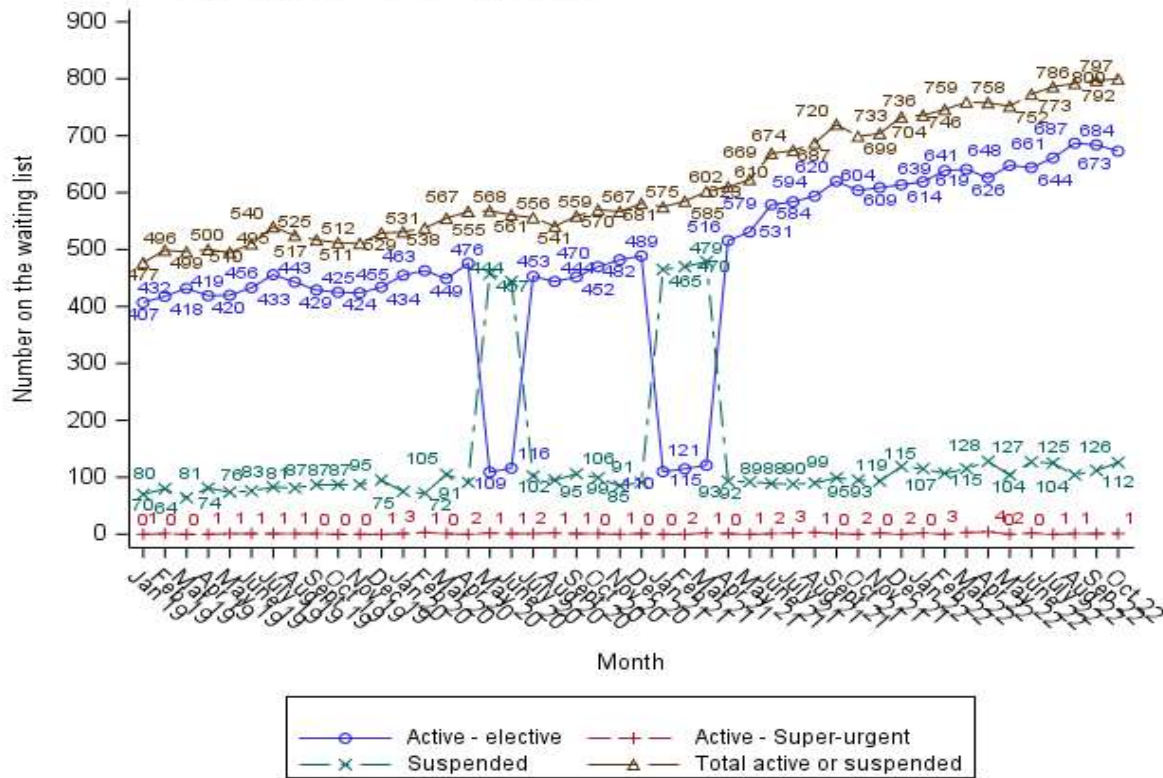


**Table 1 Reasons liver offers were declined due to logistics for livers transplanted, by centre and week, 16 August 2022 to 10 October 2022**

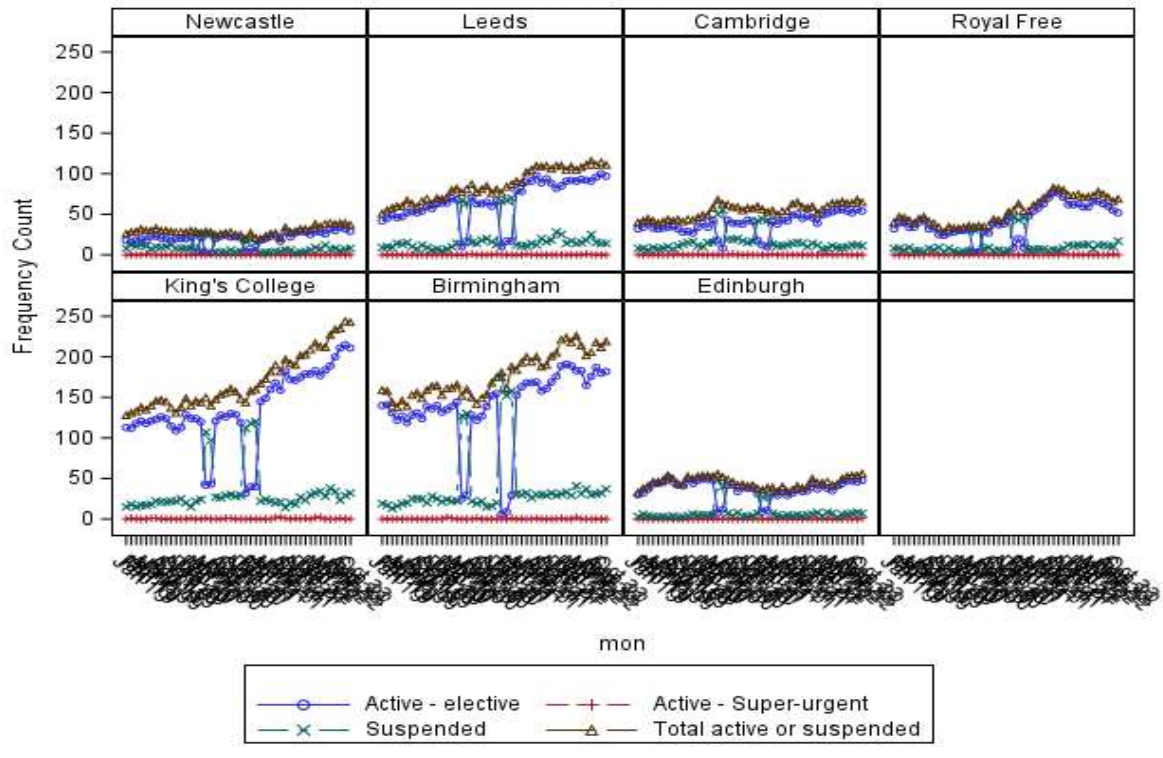
<b>Week</b>	<b>Centre</b>	<b>Centre already retrieving/transplanting</b>	<b>Transport/distance difficulties</b>	<b>No beds/staff/theatre</b>	<b>NRP/equipment not available</b>	<b>Total</b>
<b>DBD named patient</b>						
16 – 22 August	Cambridge	1	0	0	0	1
6 – 12 September	Newcastle	0	0	1	0	1
	Leeds	1	0	0	0	1
	Birmingham	0	0	1	0	1
20 – 26 September	Cambridge	2	0	0	0	2
	Royal Free	0	1	0	0	1
	Leeds	1	0	0	1	2
27 – 3 October	Birmingham	0	0	2	0	2
	Edinburgh	0	1	1	0	2
4 – 10 October	Royal Free	1	0	0	0	1
<b>DBD fast-track</b>						
16 – 22 August	Edinburgh	1	0	0	0	1
20 – 26 September	Edinburgh	1	0	0	0	1
	Cambridge	0	0	1	0	1
27 – 3 October	Kings	1	0	0	0	1
	Birmingham	0	1	1	0	2
<b>DCD</b>						
16 – 22 August	Royal Free	1	0	0	0	1
	Edinburgh	0	0	0	1	1
	Cambridge	1	0	0	0	1
23 – 29 August	Edinburgh	0	0	0	2	2
	Kings	0	1	0	0	1
6 – 12 September	Edinburgh	0	0	0	1	1
	Kings	0	1	0	0	1
20 – 26 September	Cambridge	0	0	1	0	1
27 – 3 October	Leeds	0	0	1	0	1
	Cambridge	1	0	0	0	1
	Birmingham	2	0	0	0	1



**Figure 11** Number of patients on the liver transplant list at the end of each month, January 2019 - 13 October 2022



**Figure 12** Number of patients on the liver transplant list at the end of each month, by centre, January 2019 - 13 October 2022



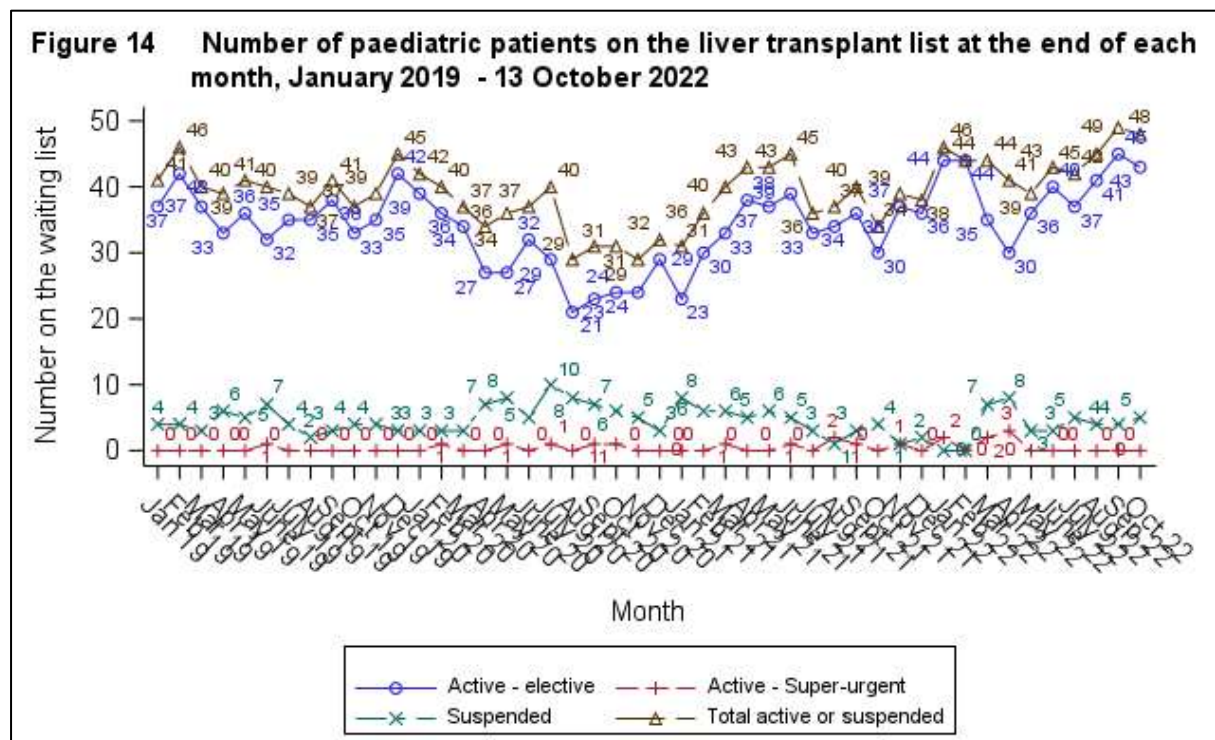
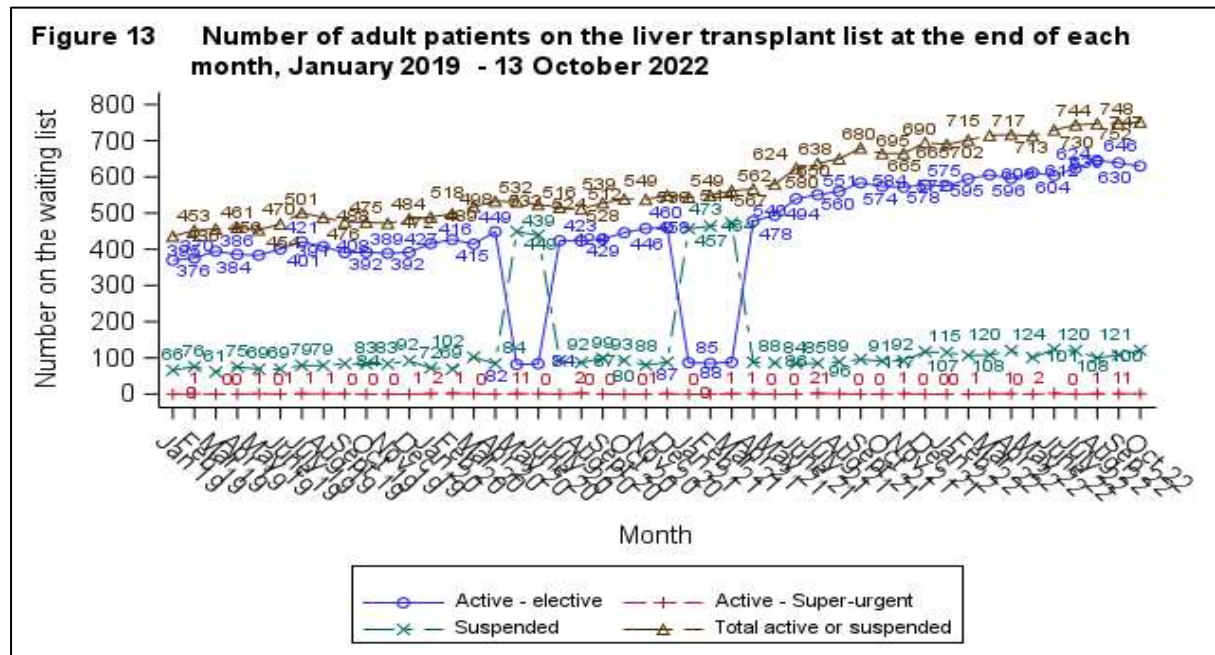
673 patients active on the UK elective liver list on 13 October 2022:

- 628 adult
- 45 paediatric

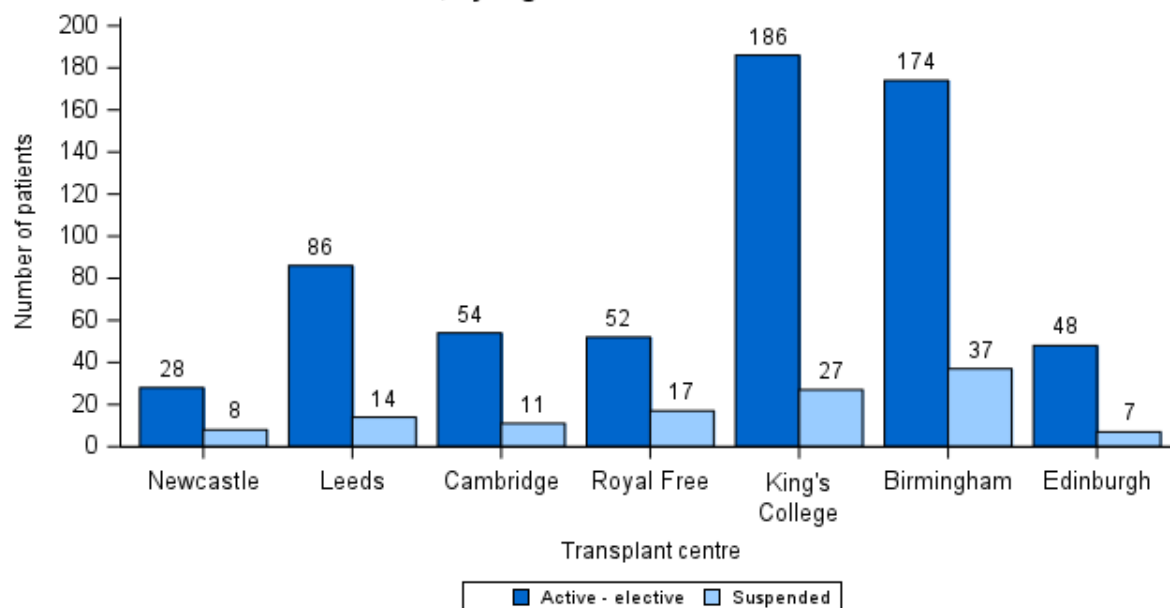
One adult blood group O patient at Edinburgh

Additional 18 patients currently active on intestinal list and 5 suspended

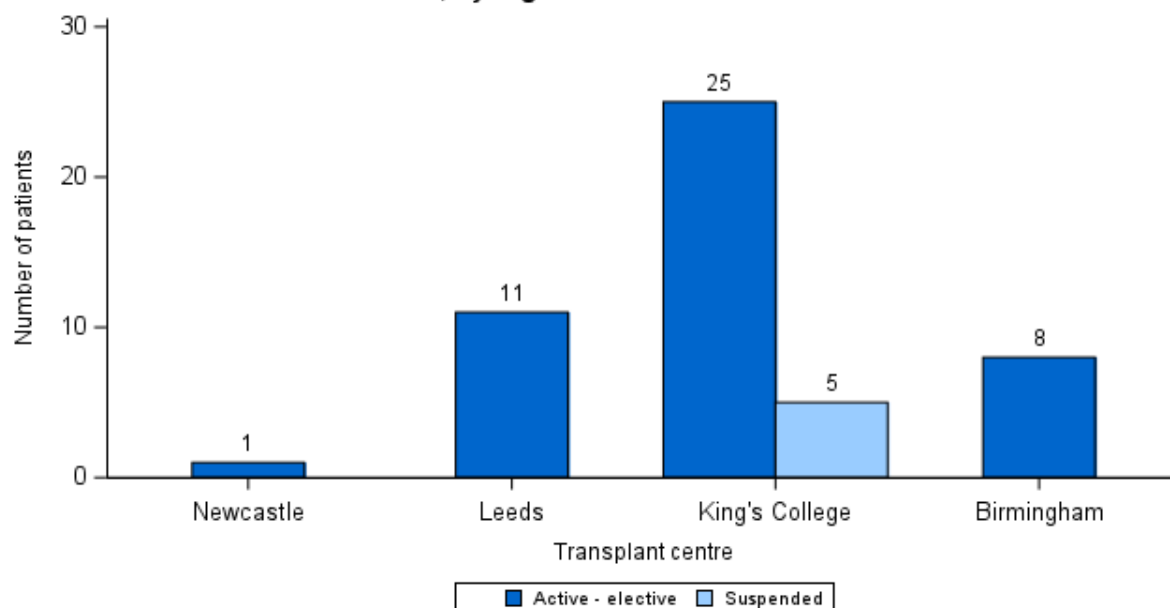
- 11 also require a liver (9 active and 2 suspended)



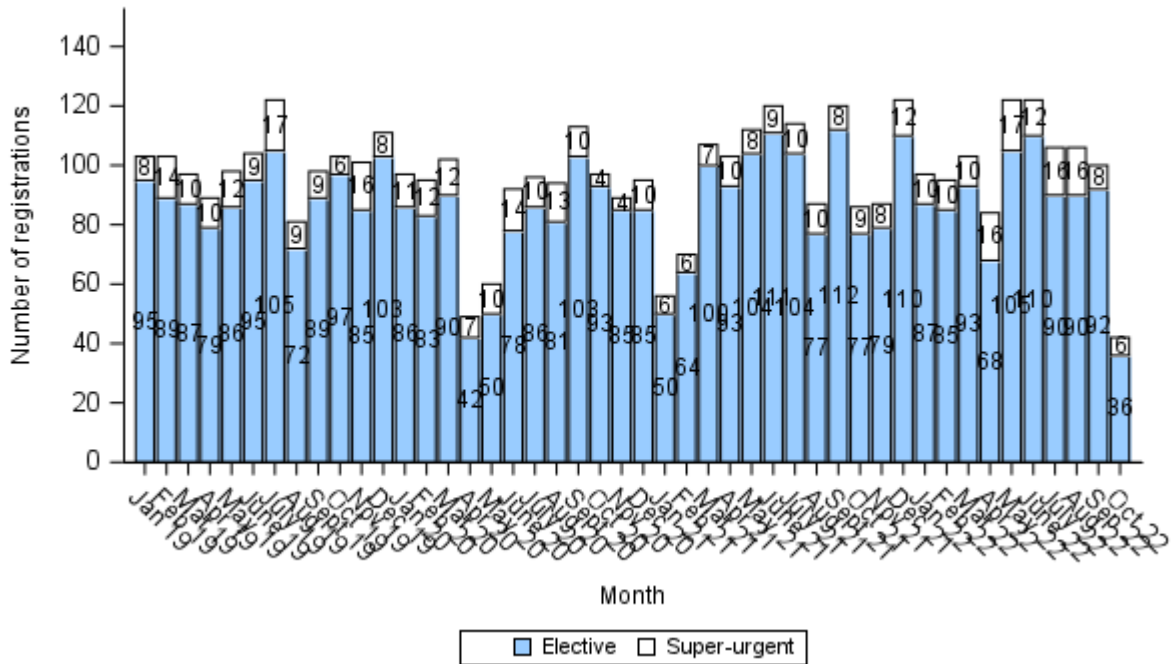
**Figure 15** Total number of adult patients on the elective UK liver transplant list on 13 October 2022, by registration status



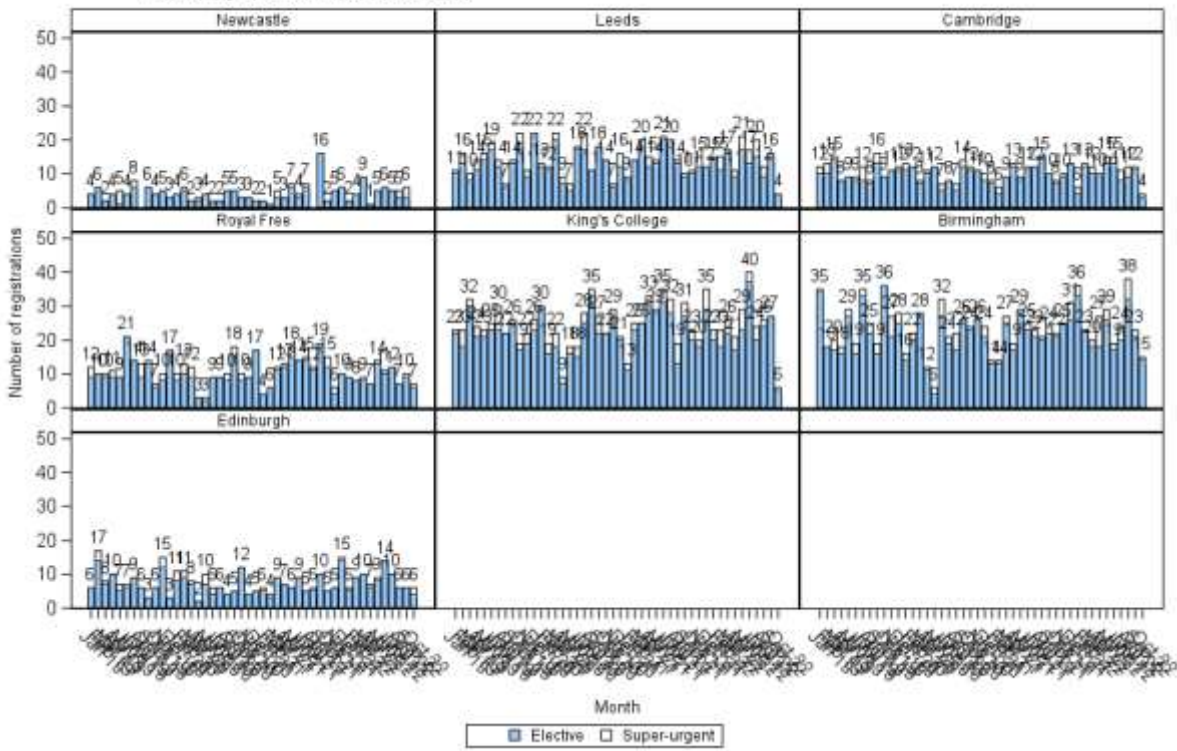
**Figure 16** Total number of paediatric patients on the elective UK liver transplant list on 13 October 2022, by registration status

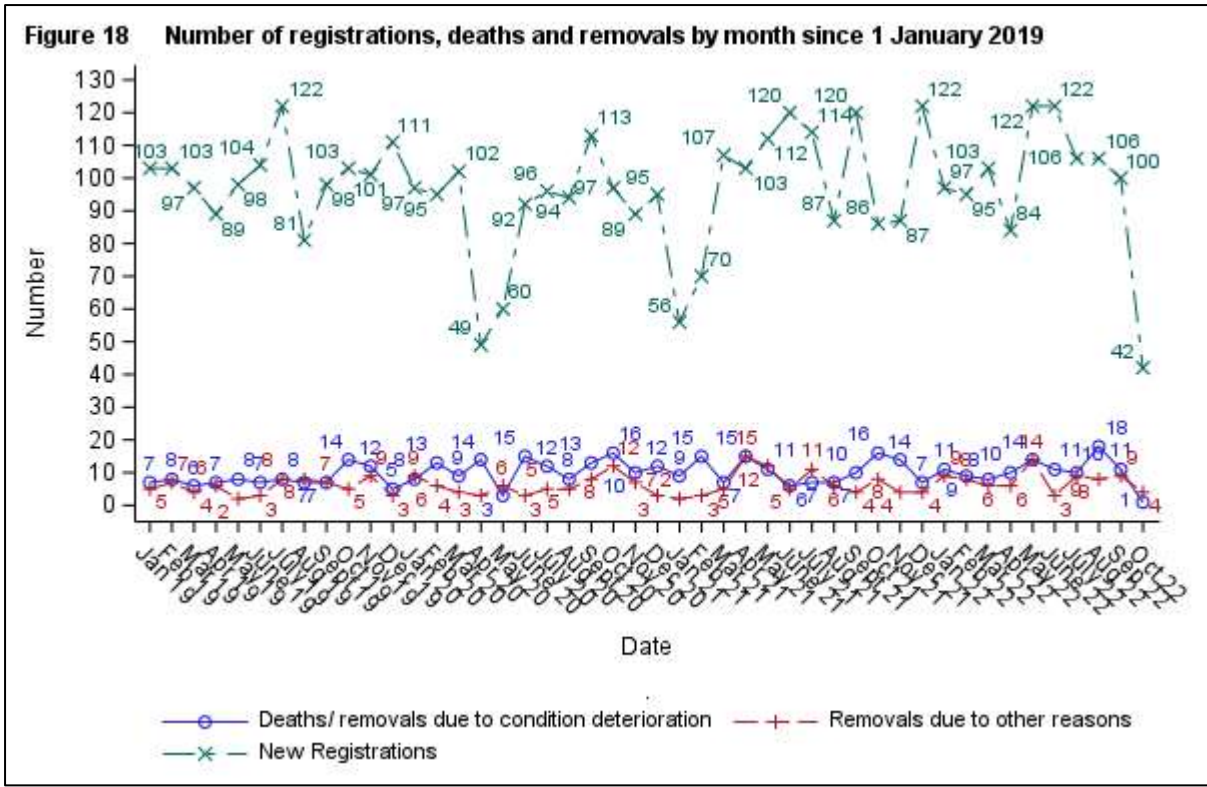


**Figure 17** Number of new registrations onto the UK liver transplant list, by urgency status, 1 January 2019 to 13 October 2022

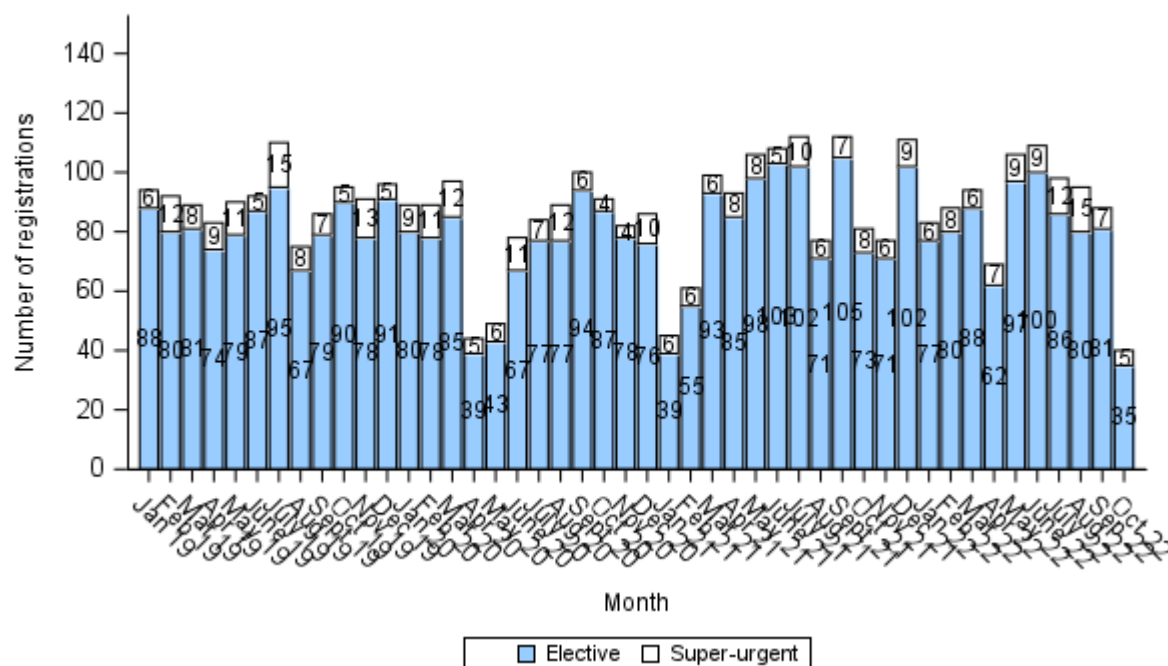


**Figure 17A** Number of new registrations onto the UK liver transplant list, by transplant centre and urgency status, 1 January 2019 to 13 October 2022

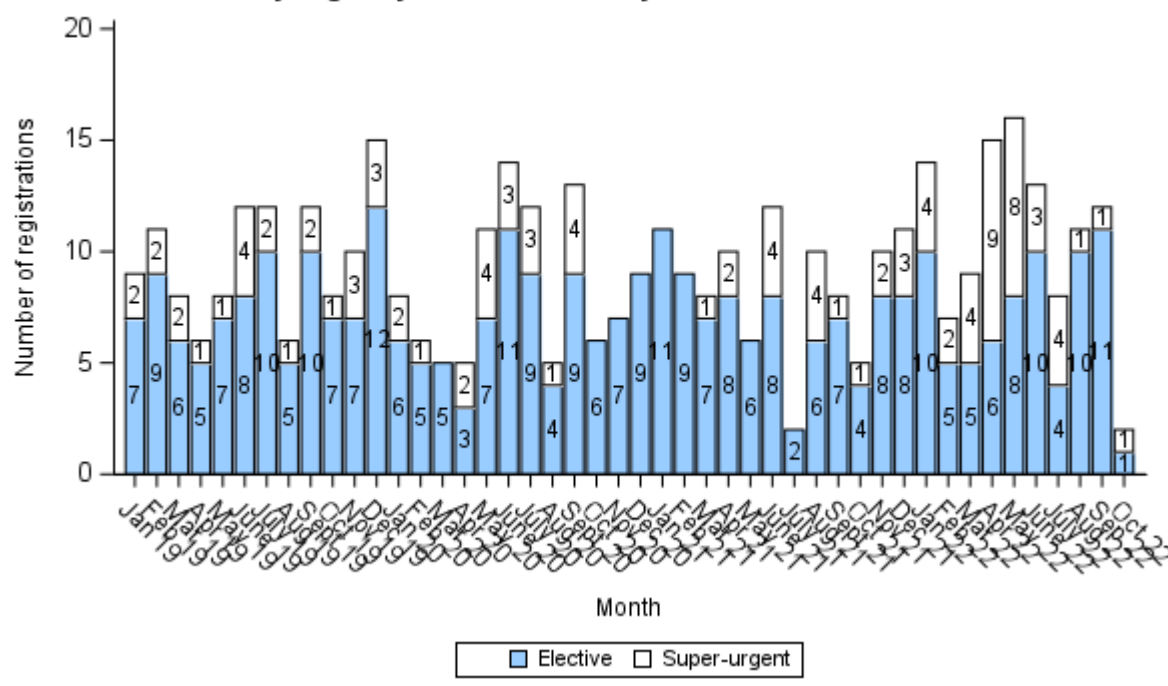




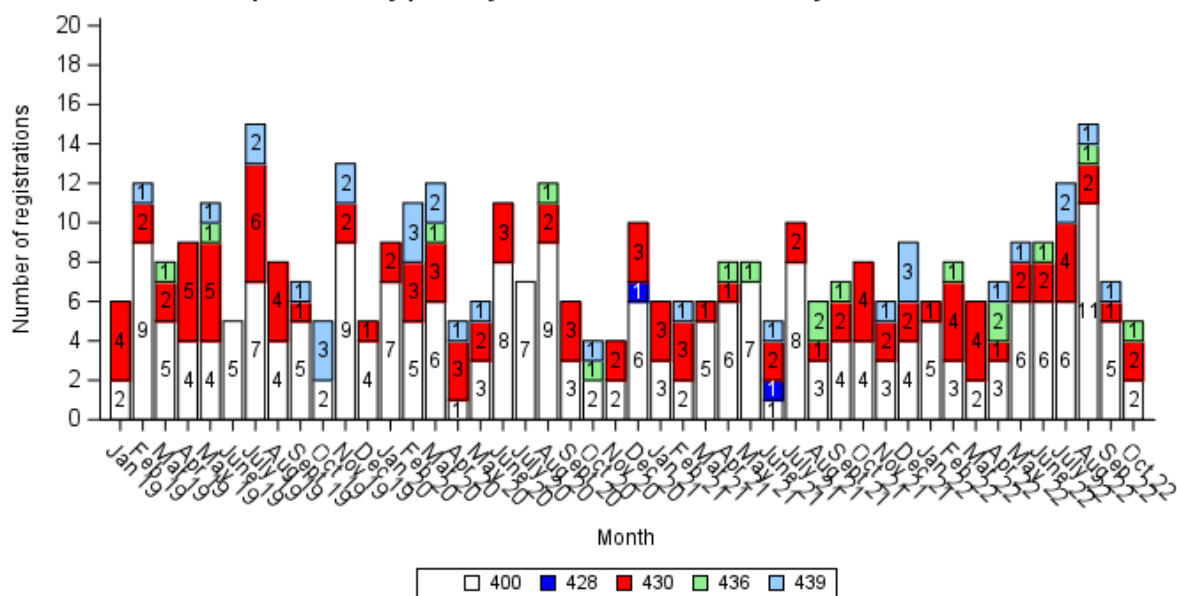
**Figure 19A** Number of new adult registrations onto the UK liver transplant list, by urgency status, 1 January 2019 to 13 October 2022



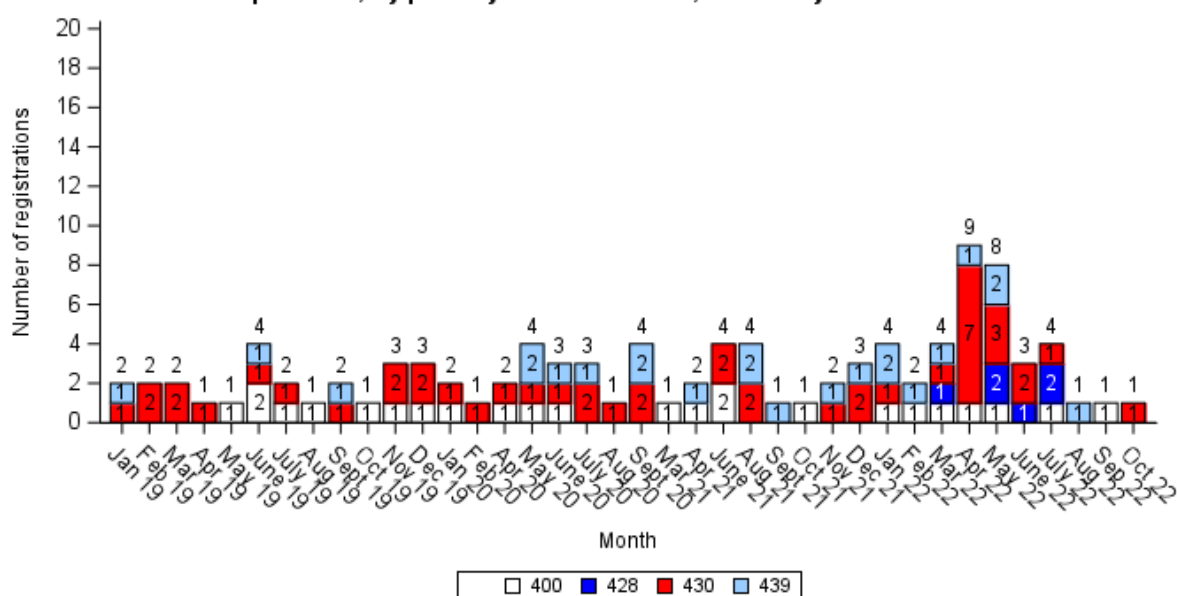
**Figure 19B** Number of new paediatric registrations onto the UK liver transplant list, by urgency status, 1 January 2019 to 13 October 2022



**Figure 20A** Number of new adult registrations onto the UK super-urgent liver transplant list, by primary liver indication, 1 January 2019 to 13 October 2022



**Figure 20B** Number of new paediatric registrations onto the UK super-urgent liver transplant list, by primary liver indication, 1 January 2019 to 13 October 2022



400 – AHF - Budd-Chiari syndrome (427), AHF - Wilson's disease (434),  
 AHF - paracetamol hepatotoxicity (437), Acute hepatic failure - other drug toxicity (438),  
 Primary non-function (473), Non-thrombotic infarction (475),  
 Hepatic artery thrombosis (479), Early graft dysfunction (480)  
 Acute vascular occlusion – venous (481), Acute vascular occlusion - artery and venous (482)

428 - Acute hepatic failure - other virus  
 430 - Acute hepatic failure - serologically indeterminate  
 435 - Acute hepatic failure - HAV  
 436 - Acute hepatic failure – HBV  
 439 - Acute hepatic failure - other, please specify

29 paediatric patients registered since 1 March 2022

- 6 due to Acute hepatic failure - other virus (428)
  - 1 received a living donor liver transplant (LLS)
  - 2 removed due to clinical reasons after 6 and 3 days on the list
  - 3 transplanted as a LLL
- 14 due to Acute hepatic failure - serologically indeterminate (430)
  - 9 transplanted (1 whole, 8 LLS (4 RLLs transplanted into NP and 4 discarded/used for research))
  - 1 died 4 days after registration
  - 2 removed due to clinical reasons after 4 and 12 days on list
  - 2 received a living donor liver transplant (LLS & LLL)
- 5 due to Acute hepatic failure - other, please specify (439)
  - 3 transplanted (3 LLS (1 RLL transplanted as part of a multivisceral transplant, 1 transplanted into NP and 1 disposed)
  - 1 removed due to clinical reasons after 2 days on the list
  - 1 still active after 3 days on the waiting list
- 1 due to Acute hepatic failure - other drug toxicity (438)
  - 1 transplanted as a LLS (RLL transplanted after being FT at KTS)
- 1 due to Acute vascular occlusion – venous (481)
  - 1 transplanted as a LLS (RLL transplanted into NP)
- 1 due to Primary non-function (473)
  - 1 transplanted with segment 3 (rest disposed of)
- 1 due to Acute hepatic failure - paracetamol hepatotoxicity (437)
  - 1 died after 9 days on the waiting list