

NHS BLOOD & TRANSPLANT

Liver offering outcome, 1 January 2020 to 18 April 2022

This report examines the offering outcome of livers offered for transplantation from UK deceased donors between 1 January 2020 and 18 April 2022 as recorded on the UK Transplant Registry on 20 April 2022.

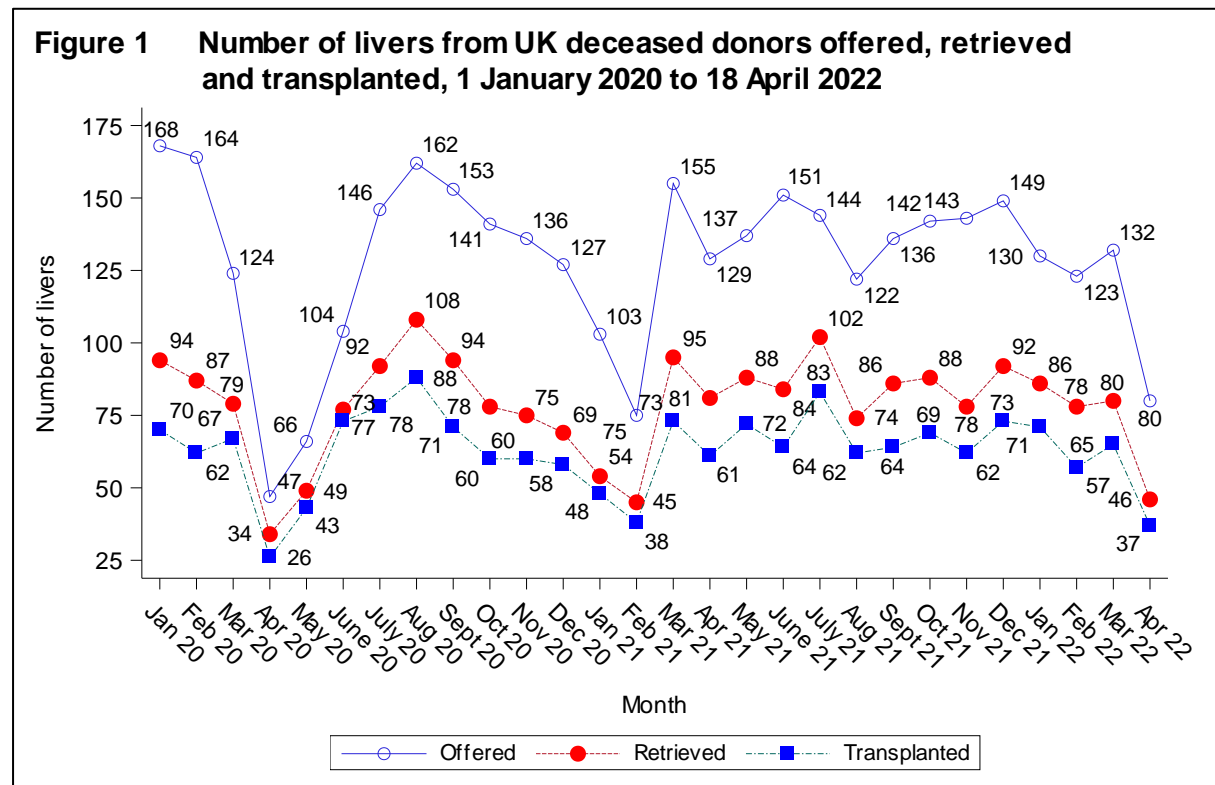


Figure 2A Number of livers from UK DBD donors offered, retrieved and transplanted, 1 January 2020 to 18 April 2022

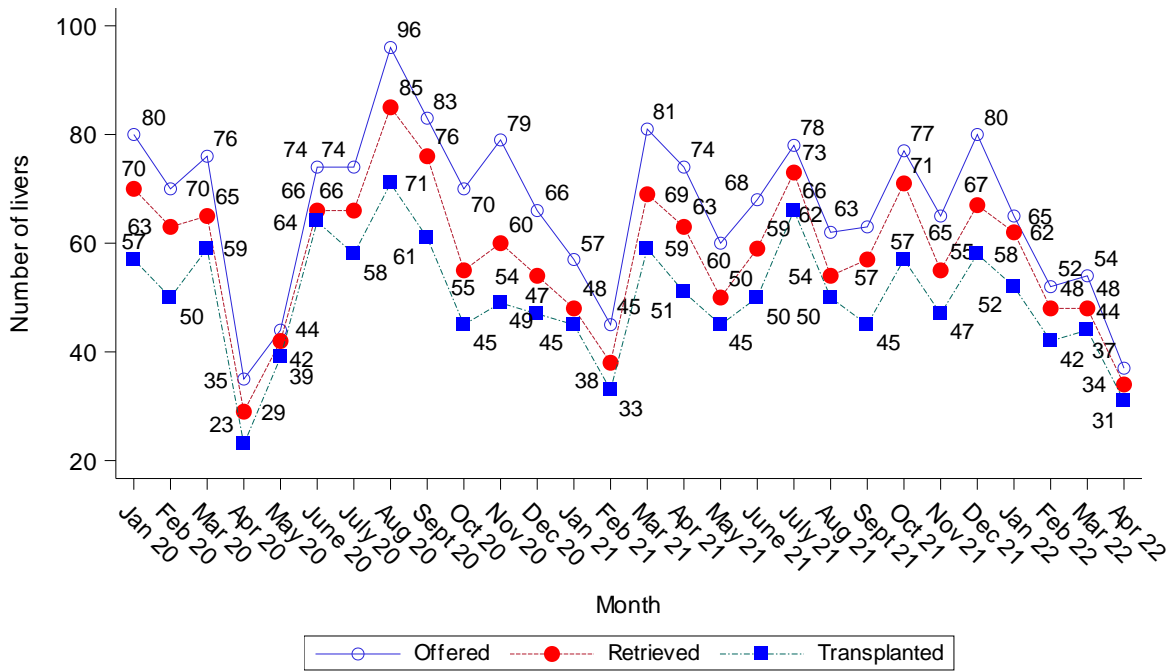


Figure 2B Number of livers from UK DCD donors offered, retrieved and transplanted, 1 January 2020 to 18 April 2022

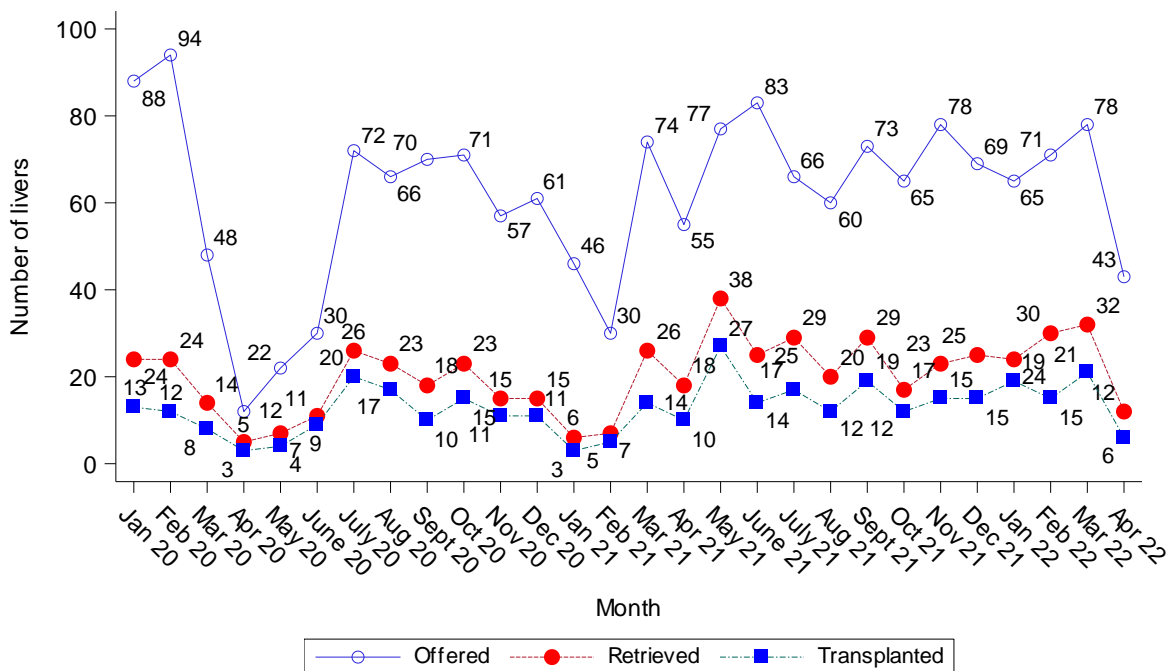


Figure 3 Number of deceased donor liver transplants performed in the UK, by donor type, 1 January 2020 to 18 April 2022

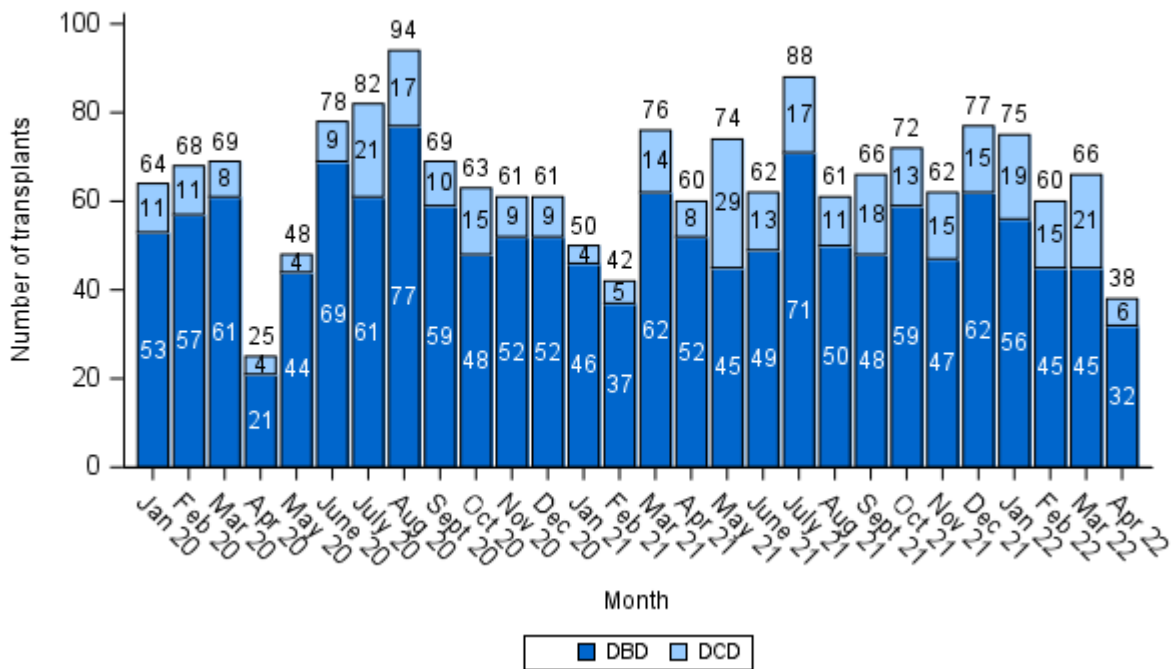


Figure 4A Number of deceased donor liver transplants performed in the UK, by transplant centre and donor type, 25 January 2022 to 18 April 2022

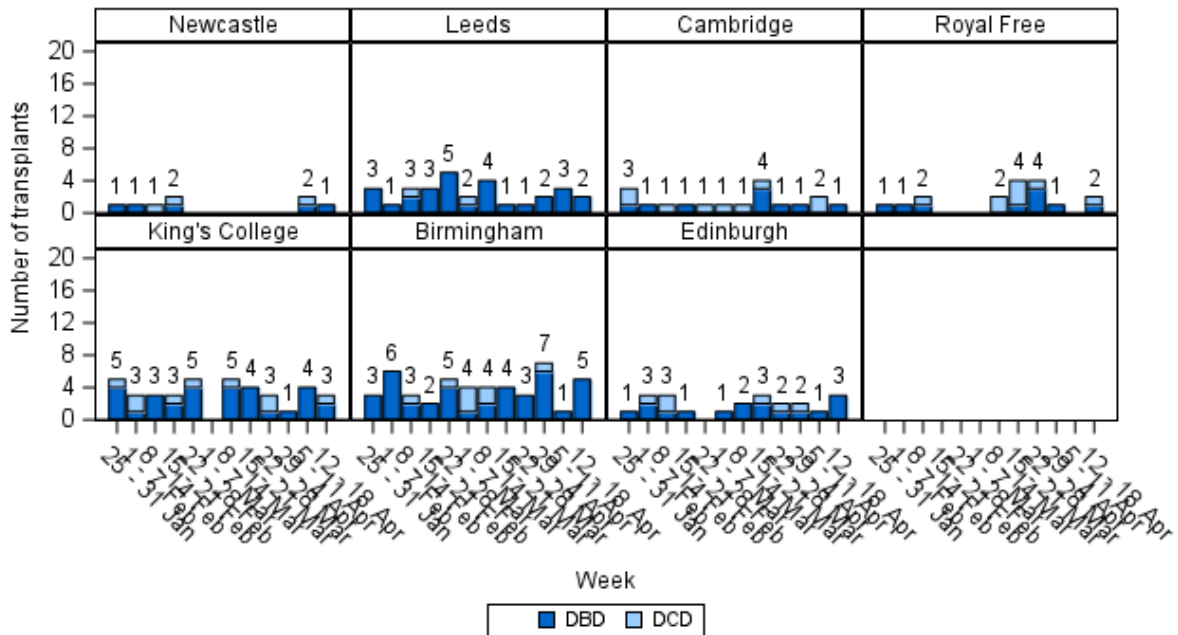


Figure 5 Number of deceased donor liver transplants performed in the UK, by urgency status, 1 January 2020 to 18 April 2022

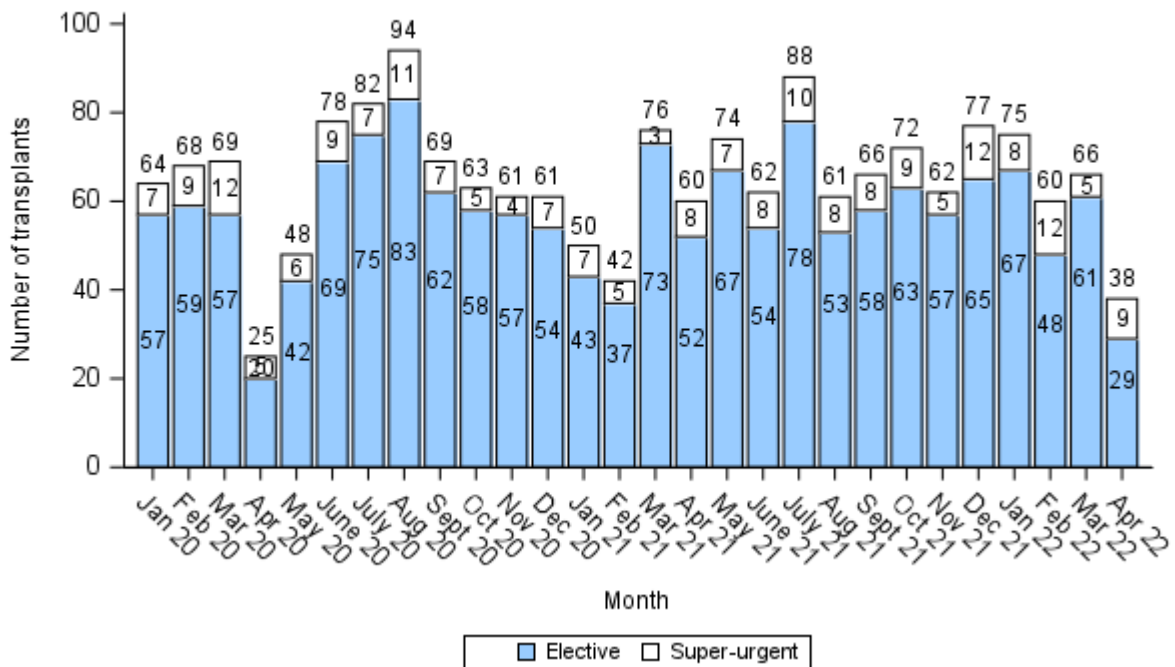


Figure 6A Number of deceased donor liver transplants performed in the UK, by transplant centre and urgency status, 25 January 2022 to 18 April 2022

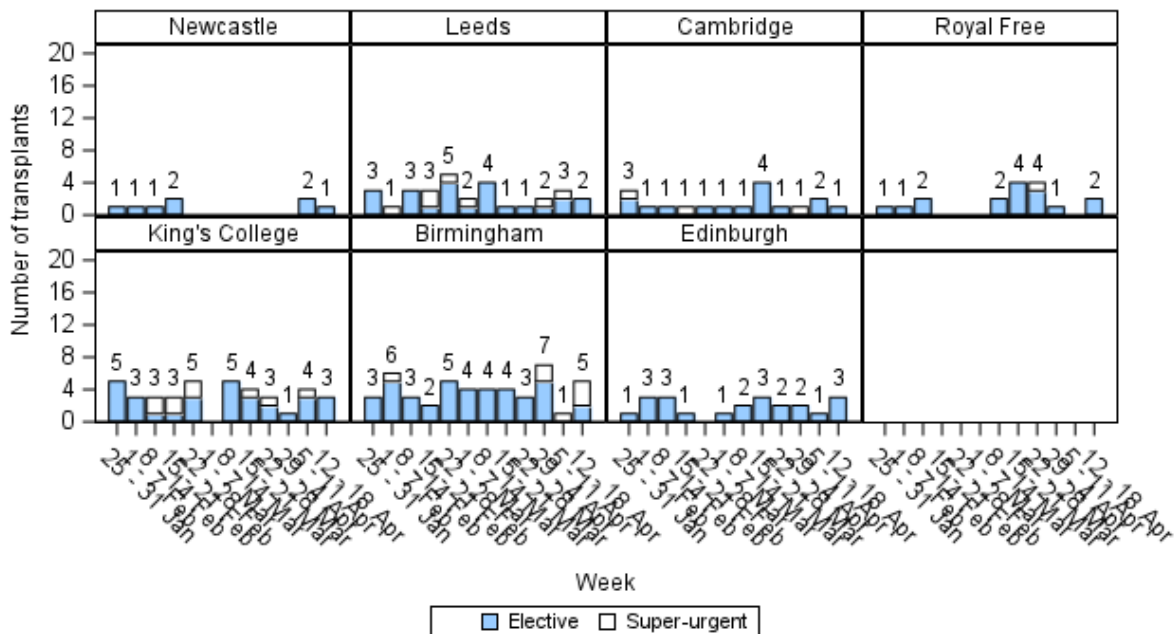


Figure 7 Number of deceased donor liver transplants performed in the UK, by age group, 4 February 2020 to 18 April 2022

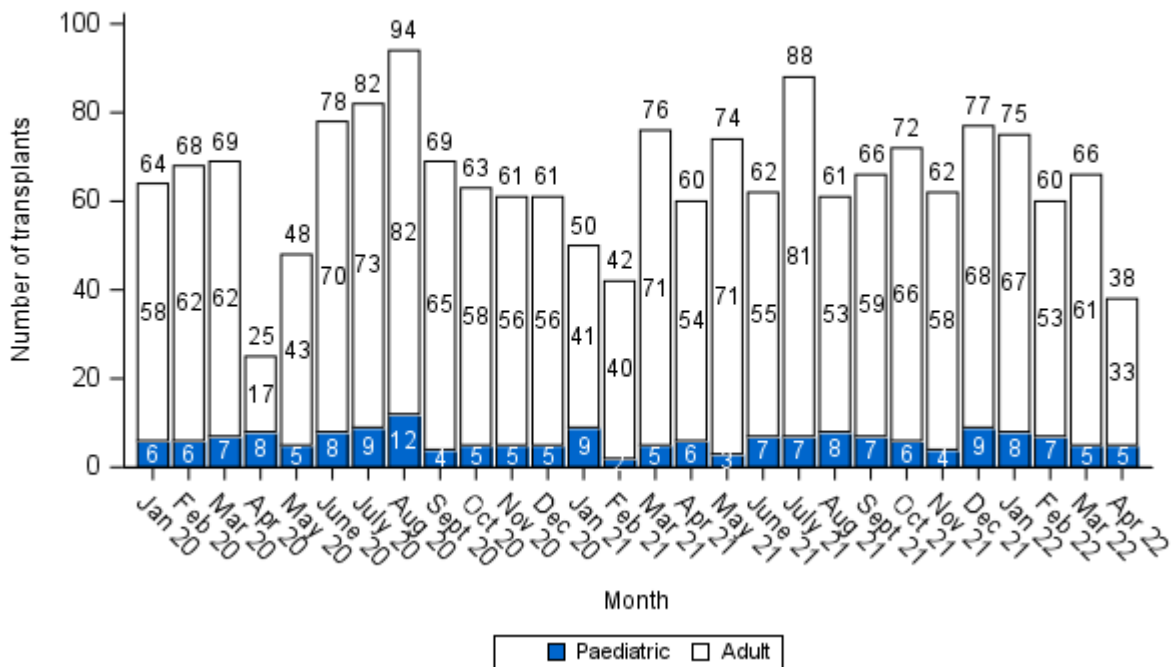
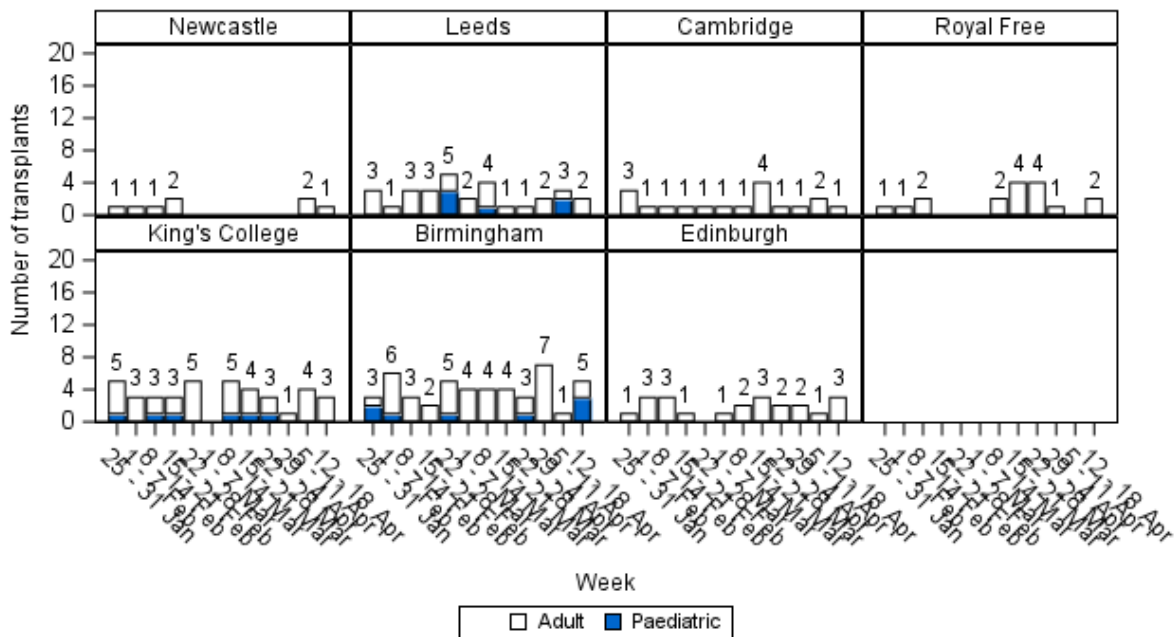
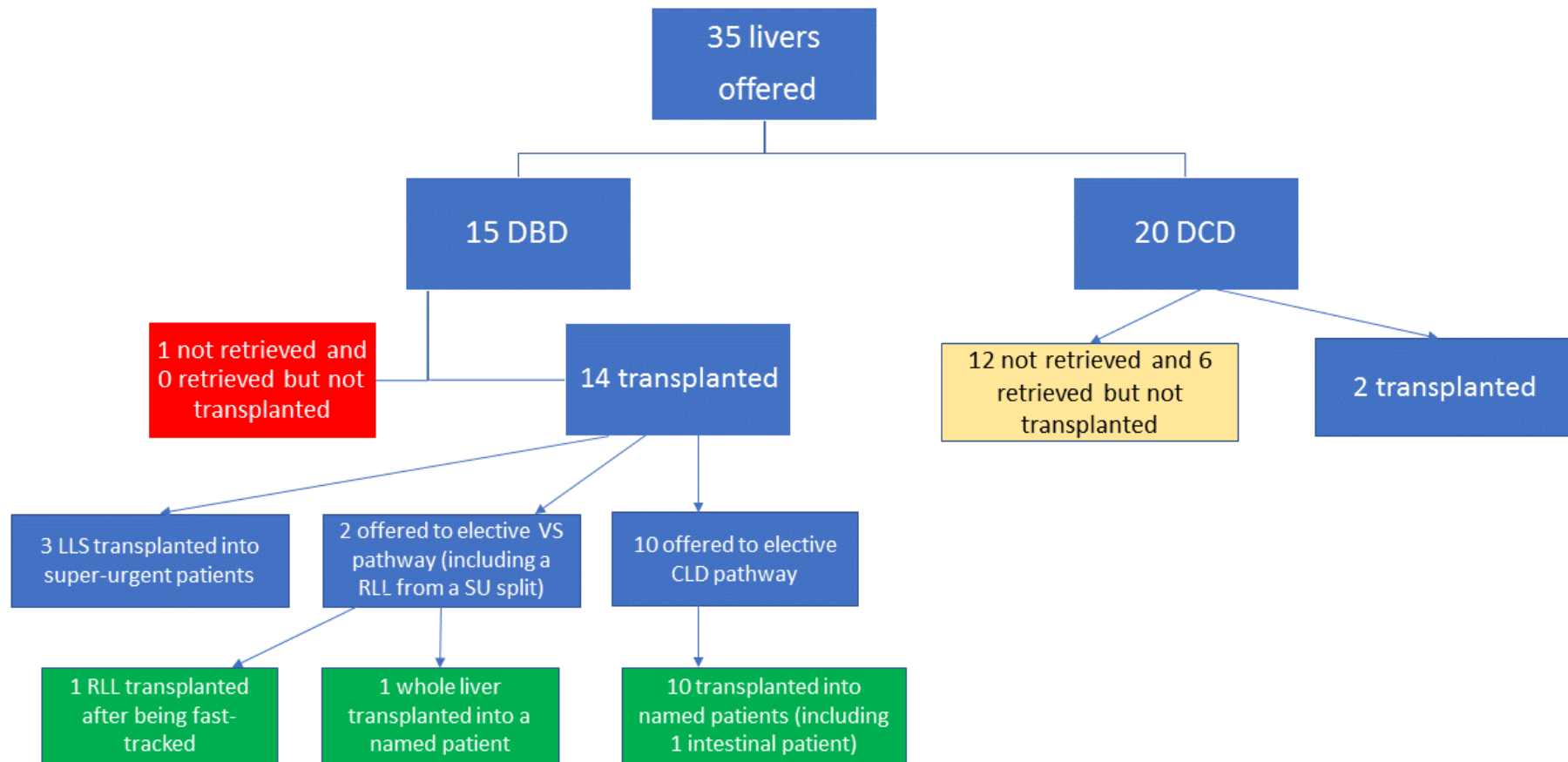


Figure 8A Number of deceased donor liver transplants performed in the UK, by transplant centre and age group, 25 January 2022 to 18 April 2022



Liver offering outcomes 12th April – 18th April 2022



DBD Offering

Table 1 Summary of fast-track offering for DBD livers between 3 November 2020 and 18 April 2022							
	<i>Number of offers</i>	<i>Number of livers fast-tracked</i>		<i>Number of fast-track offers after x-clamp</i>		<i>Number of fast-track offers resulted in transplant</i>	
	N	N	%	N	% of fast-tracked	N	% of fast-tracked
3 November – 30 November 2020	74	37	50	13	35	8	22
1 December – 28 December 2020	59	21	36	9	43	10	48
29 December – 25 January 2021	49	23	47	6	26	13	57
26 January – 22 February 2021	48	17	35	10	59	10	59
23 February – 22 March 2021	66	29	44	12	41	16	55
23 March – 19 April 2021	74	30	41	15	50	8	27
20 April – 17 May 2021	58	18	31	7	39	5	28
18 May – 14 June 2021	61	22	36	8	36	6	27
15 June – 12 July 2021	58	19	33	8	42	8	42
13 July – 9 August 2021	64	16	25	9	56	10	63
10 August – 6 September 2021	62	15	24	7	47	4	27
7 September – 4 October 2021	57	24	42	14	58	9	38
5 October – 1 November 2021	71	25	35	17	68	9	36
2 November – 29 November 2021	59	13	22	9	69	5	38
30 November – 27 December 2021	75	26	35	15	58	10	38
28 December – 24 January 2022	57	21	37	13	62	7	33
25 January – 21 February 2022	50	12	24	8	67	4	33
22 February – 21 March 2022	50	17	34	6	35	8	47
22 March – 18 April 2022	55	17	31	10	59	10	59
Total	1147	402	35	196	49	160	40

Table 2 DBD adult elective and DCD decline rates for livers transplanted, by week, 25 January 2022 to 18 April 2022

	No. of offers	No. of offers declined (%)	Offers declined due to logistical reasons	
			N (% declined)	(% of all offers)
DBD Named Patient				
25 January – 31 January	47	40 (85%)	5 (13%)	(11%)
1 February – 7 February	47	40 (85%)	3 (8%)	(6%)
8 February – 14 February	32	25 (78%)	2 (8%)	(6%)
15 February – 21 February	14	10 (71%)	1 (10%)	(7%)
22 February – 28 February	30	23 (77%)	4 (17%)	(13%)
1 March – 7 March	3	1 (33%)	0 (0%)	(0%)
8 March – 14 March	32	23 (72%)	1 (4%)	(3%)
15 March – 21 March	60	52 (87%)	5 (10%)	(8%)
22 March – 28 March	44	40 (91%)	3 (8%)	(7%)
29 March – 4 April	25	19 (76%)	1 (5%)	(4%)
5 April – 11 April	30	23 (77%)	2 (9%)	(7%)
12 April – 18 April	43	33 (77%)	3 (9%)	(7%)
Total	407	329 (81%)	30 (9%)	(7%)
DBD Fast-track				
25 January – 31 January	13	10 (77%)	1 (10%)	(8%)
1 February – 7 February	6	5 (83%)	1 (20%)	(17%)
8 February – 14 February	0	-	-	-
15 February – 21 February	0	-	-	-
22 February – 28 February	6	5 (83%)	1 (20%)	(17%)
1 March – 7 March	3	3 (100%)	0 (0%)	(0%)
8 March – 14 March	13	11 (85%)	0 (0%)	(0%)
15 March – 21 March	21	17 (81%)	3 (18%)	(14%)
22 March – 28 March	15	13 (87%)	1 (8%)	(7%)
29 March – 4 April	21	18 (86%)	1 (6%)	(5%)
5 April – 11 April	0	-	-	-
12 April – 18 April	17	16 (94%)	2 (13%)	(12%)
Total	115	98 (85%)	10 (10%)	(9%)
DCD				
25 January – 31 January	4	1 (25%)	1 (100%)	(25%)
1 February – 7 February	4	0 (0%)	0 (0%)	(0%)
8 February – 14 February	23	17 (74%)	4 (23%)	(17%)
15 February – 21 February	6	4 (67%)	2 (50%)	(33%)
22 February – 28 February	4	1 (25%)	0 (0%)	(0%)
1 March – 7 March	12	6 (50%)	1 (17%)	(8%)
8 March – 14 March	17	11 (65%)	3 (27%)	(18%)
15 March – 21 March	19	14 (74%)	1 (7%)	(5%)
22 March – 28 March	22	18 (82%)	1 (6%)	(5%)
29 March – 4 April	12	10 (83%)	1 (10%)	(8%)
5 April – 11 April	17	14 (82%)	1 (7%)	(6%)
12 April – 18 April	6	4 (67%)	0 (0%)	(0%)
Total	146	100 (68%)	15 (15%)	(10%)
Overall Total	668	527 (79%)	55 (10%)	(8%)

Table 3A DBD adult elective named patient offers decline rates for livers transplanted, by centre and week, 25 January 2022 to 18 April 2022

	No. of offers	No. of offers declined (%)	Offers declined due to logistical reasons N (% declined)	(% of all offers)
Newcastle				
25 January – 31 January	16	15 (94%)	0 (0%)	(0%)
1 February – 7 February	14	14 (100%)	0 (0%)	(0%)
8 February – 14 February	11	11 (100%)	0 (0%)	(0%)
15 February – 21 February	5	4 (80%)	0 (0%)	(0%)
22 February – 28 February	8	8 (100%)	0 (0%)	(0%)
1 March – 7 March	1	1 (100%)	0 (0%)	(0%)
8 March – 14 March	11	11 (100%)	0 (0%)	(0%)
15 March – 21 March	15	15 (100%)	0 (0%)	(0%)
22 March – 28 March	12	12 (100%)	0 (0%)	(0%)
29 March – 4 April	10	10 (100%)	0 (0%)	(0%)
5 April – 11 April	13	11 (85%)	0 (0%)	(0%)
12 April – 18 April	14	14 (100%)	0 (0%)	(0%)
Total	130	126 (97%)	0 (0%)	(0%)
Leeds				
25 January – 31 January	4	2 (50%)	0 (0%)	(0%)
1 February – 7 February	5	5 (100%)	0 (0%)	(0%)
8 February – 14 February	3	1 (33%)	0 (0%)	(0%)
15 February – 21 February	3	2 (67%)	0 (0%)	(0%)
22 February – 28 February	2	0 (0%)	0 (0%)	(0%)
1 March – 7 March	0	-	-	-
8 March – 14 March	4	1 (25%)	0 (0%)	(0%)
29 March – 21 March	10	9 (90%)	0 (0%)	(0%)
22 March – 28 March	8	7 (88%)	0 (0%)	(0%)
29 March – 4 April	3	2 (67%)	0 (0%)	(0%)
5 April – 11 April	2	1 (50%)	1 (100%)	(50%)
12 April – 18 April	3	1 (33%)	0 (0%)	(0%)
Total	47	31 (66%)	1 (3%)	(2%)
Cambridge				
25 January – 31 January	2	2 (100%)	0 (0%)	(0%)
1 February – 7 February	0	-	-	-
8 February – 14 February	1	1 (100%)	1 (100%)	(100%)
15 February – 21 February	1	1 (100%)	1 (100%)	(100%)
22 February – 28 February	3	3 (100%)	3 (100%)	(100%)
1 March – 7 March	0	-	-	-
8 March – 14 March	3	2 (67%)	1 (50%)	(33%)
15 March – 21 March	5	3 (60%)	0 (0%)	(0%)
22 March – 28 March	3	3 (100%)	0 (0%)	(0%)
29 March – 4 April	0	-	-	-
5 April – 11 April	2	2 (100%)	0 (0%)	(0%)
12 April – 18 April	3	2 (67%)	0 (0%)	(0%)
Total	23	19 (83%)	6 (32%)	(26%)
Royal Free				
25 January – 31 January	1	0 (0%)	0 (0%)	(0%)
1 February – 7 February	2	2 (100%)	0 (0%)	(0%)
8 February – 14 February	1	0 (0%)	0 (0%)	(0%)
15 February – 21 February	0	-	-	-
22 February – 28 February	0	-	-	-
1 March – 7 March	0	-	-	-
8 March – 14 March	0	-	-	-
15 March – 21 March	1	0 (0%)	0 (0%)	(0%)
22 March – 28 March	1	1 (100%)	0 (0%)	(0%)
29 March – 4 April	0	-	-	-
5 April – 11 April	0	-	-	-
12 April – 18 April	0	-	-	-
Total	6	3 (50%)	0 (0%)	(0%)

Kings College				
25 January – 31 January	6	5 (83%)	0 (0%)	(0%)
1 February – 7 February	5	4 (80%)	0 (0%)	(0%)
8 February – 14 February	1	1 (100%)	0 (0%)	(0%)
15 February – 21 February	1	1 (100%)	0 (0%)	(0%)
22 February – 28 February	4	2 (50%)	0 (0%)	(0%)
1 March – 7 March	1	0 (0%)	0 (0%)	(0%)
8 March – 14 March	4	2 (50%)	0 (0%)	(0%)
15 March – 21 March	4	3 (75%)	0 (0%)	(0%)
22 March – 28 March	5	5 (100%)	0 (0%)	(0%)
29 March – 4 April	2	1 (50%)	1 (100%)	(50%)
5 April – 11 April	5	2 (40%)	0 (0%)	(0%)
12 April – 18 April	7	5 (71%)	0 (0%)	(0%)
Total	45	31 (69%)	1 (3%)	(2%)
Birmingham				
25 January – 31 January	14	13 (93%)	5 (38%)	(36%)
1 February – 7 February	18	14 (78%)	3 (21%)	(17%)
8 February – 14 February	11	9 (82%)	1 (11%)	(9%)
15 February – 21 February	4	2 (50%)	0 (0%)	(0%)
22 February – 28 February	12	10 (83%)	1 (10%)	(8%)
1 March – 7 March	0	-	-	-
8 March – 14 March	8	7 (88%)	0 (0%)	(0%)
15 March – 21 March	16	14 (88%)	5 (36%)	(31%)
22 March – 28 March	12	10 (83%)	3 (30%)	(25%)
29 March – 4 April	7	4 (57%)	0 (0%)	(0%)
5 April – 11 April	4	4 (100%)	1 (25%)	(25%)
12 April – 18 April	8	6 (75%)	2 (33%)	(25%)
Total	114	93 (82%)	21 (23%)	(18%)
Edinburgh				
25 January – 31 January	4	3 (75%)	0 (0%)	(0%)
1 February – 7 February	3	1 (33%)	0 (0%)	(0%)
8 February – 14 February	4	2 (50%)	0 (0%)	(0%)
15 February – 21 February	0	-	-	-
22 February – 28 February	1	0 (0%)	0 (0%)	(0%)
1 March – 7 March	0	-	-	-
8 March – 14 March	2	0 (0%)	0 (0%)	(0%)
15 March – 21 March	9	8 (89%)	0 (0%)	(0%)
22 March – 28 March	3	2 (67%)	0 (0%)	(0%)
29 March – 4 April	3	2 (67%)	0 (0%)	(0%)
5 April – 11 April	4	3 (75%)	0 (0%)	(0%)
12 April – 18 April	8	5 (63%)	1 (20%)	(13%)
Total	41	26 (63%)	1 (4%)	(2%)

Table 3B DBD adult fast-track offer decline rates for livers transplanted, by centre and week, 25 January 2022 to 18 April 2022

	No. of offers	No. of offers declined (%)	Offers declined due to logistical reasons N (% declined)	(% of all offers)
Newcastle				
25 January – 31 January	2	2 (100%)	0 (0%)	(0%)
1 February – 7 February	1	0 (0%)	0 (0%)	(0%)
8 February – 14 February	0	-	-	-
15 February – 21 February	0	-	-	-
22 February – 28 February	1	1 (100%)	0 (0%)	(0%)
1 March – 7 March	0	-	-	-
8 March – 14 March	2	2 (100%)	0 (0%)	(0%)
15 March – 21 March	2	2 (100%)	0 (0%)	(0%)
22 March – 28 March	2	2 (100%)	0 (0%)	(0%)
29 March – 4 April	3	3 (100%)	0 (0%)	(0%)
5 April – 11 April	0	-	-	-
12 April – 18 April	3	3 (100%)	0 (0%)	(0%)
Total	16	15 (94%)	0 (0%)	(0%)
Leeds				
25 January – 31 January	1	0 (0%)	0 (0%)	(0%)
1 February – 7 February	1	1 (100%)	0 (0%)	(0%)
8 February – 14 February	0	-	-	-
15 February – 21 February	0	-	-	-
22 February – 28 February	1	1 (100%)	0 (0%)	(0%)
1 March – 7 March	1	1 (100%)	0 (0%)	(0%)
8 March – 14 March	2	2 (100%)	0 (0%)	(0%)
15 March – 21 March	2	2 (100%)	0 (0%)	(0%)
22 March – 28 March	3	3 (100%)	0 (0%)	(0%)
29 March – 4 April	3	3 (100%)	0 (0%)	(0%)
5 April – 11 April	0	-	-	-
12 April – 18 April	2	2 (100%)	0 (0%)	(0%)
Total	16	15 (94%)	0 (0%)	(0%)
Cambridge				
25 January – 31 January	1	1 (100%)	0 (0%)	(0%)
1 February – 7 February	1	1 (100%)	0 (0%)	(0%)
8 February – 14 February	0	-	-	-
15 February – 21 February	0	-	-	-
22 February – 28 February	1	1 (100%)	1 (100%)	(100%)
1 March – 7 March	1	1 (100%)	0 (0%)	(0%)
8 March – 14 March	2	2 (100%)	0 (0%)	(0%)
15 March – 21 March	4	3 (75%)	0 (0%)	(0%)
22 March – 28 March	2	2 (100%)	1 (50%)	(50%)
29 March – 4 April	3	3 (100%)	1 (33%)	(33%)
5 April – 11 April	0	-	-	-
12 April – 18 April	2	2 (100%)	0 (0%)	(0%)
Total	17	16 (94%)	3 (19%)	(18%)
Royal Free				
25 January – 31 January	2	2 (100%)	0 (0%)	(0%)
1 February – 7 February	1	1 (100%)	0 (0%)	(0%)
8 February – 14 February	0	-	-	-
15 February – 21 February	0	-	-	-
22 February – 28 February	1	1 (100%)	0 (0%)	(0%)
1 March – 7 March	0	-	-	-
8 March – 14 March	1	1 (100%)	0 (0%)	(0%)
15 March – 21 March	1	1 (100%)	0 (0%)	(0%)
22 March – 28 March	2	0 (0%)	0 (0%)	(0%)
29 March – 4 April	3	2 (67%)	0 (0%)	(0%)
5 April – 11 April	0	-	-	-
12 April – 18 April	2	1 (50%)	1 (100%)	(50%)
Total	13	9 (69%)	1 (11%)	(8%)

Kings College				
25 January – 31 January	2	1 (50%)	0 (0%)	(0%)
1 February – 7 February	0	-	-	-
8 February – 14 February	0	-	-	-
15 February – 21 February	0	-	-	-
22 February – 28 February	1	1 (100%)	0 (0%)	(0%)
1 March – 7 March	0	-	-	-
8 March – 14 March	2	2 (100%)	0 (0%)	(0%)
15 March – 21 March	3	2 (67%)	0 (0%)	(0%)
22 March – 28 March	2	2 (100%)	0 (0%)	(0%)
29 March – 4 April	3	3 (100%)	0 (0%)	(0%)
5 April – 11 April	0	-	-	-
12 April – 18 April	2	2 (100%)	1 (50%)	(50%)
Total	15	13 (87%)	1 (8%)	(7%)
Birmingham				
25 January – 31 January	2	2 (100%)	0 (0%)	(0%)
1 February – 7 February	1	1 (100%)	0 (0%)	(0%)
8 February – 14 February	0	-	-	-
15 February – 21 February	0	-	-	-
22 February – 28 February	1	0 (0%)	0 (0%)	(0%)
1 March – 7 March	1	1 (100%)	0 (0%)	(0%)
8 March – 14 March	2	0 (0%)	0 (0%)	(0%)
15 March – 21 March	5	4 (80%)	3 (75%)	(60%)
22 March – 28 March	2	2 (100%)	0 (0%)	(0%)
29 March – 4 April	3	1 (33%)	0 (0%)	(0%)
5 April – 11 April	0	-	-	-
12 April – 18 April	3	3 (100%)	0 (0%)	(0%)
Total	20	14 (70%)	3 (21%)	(15%)
Edinburgh				
25 January – 31 January	2	2 (100%)	1 (50%)	(50%)
1 February – 7 February	1	1 (100%)	1 (100%)	(100%)
8 February – 14 February	0	-	-	-
15 February – 21 February	0	-	-	-
22 February – 28 February	0	-	-	-
1 March – 7 March	0	-	-	-
8 March – 14 March	2	2 (100%)	0 (0%)	(0%)
15 March – 21 March	4	3 (75%)	0 (0%)	(0%)
22 March – 28 March	2	2 (100%)	0 (0%)	(0%)
29 March – 4 April	3	3 (100%)	0 (0%)	(0%)
5 April – 11 April	0	-	-	-
12 April – 18 April	3	3 (100%)	0 (0%)	(0%)
Total	17	16 (94%)	2 (13%)	(12%)

Table 3C DCD liver offers decline rates for livers transplanted, by centre and week, 25 January 2022 to 18 April 2022

	No. of offers	No. of offers declined (%)	Offers declined due to logistical reasons N (% declined)	(% of all offers)
Newcastle				
25 January – 31 January	0	-	-	-
1 February – 7 February	0	-	-	-
8 February – 14 February	3	2 (67%)	0 (0%)	(0%)
15 February – 21 February	1	0 (0%)	0 (0%)	(0%)
22 February – 28 February	0	-	-	-
1 March – 7 March	1	1 (100%)	0 (0%)	(0%)
8 March – 14 March	2	2 (100%)	1 (50%)	(50%)
15 March – 21 March	2	2 (100%)	0 (0%)	(0%)
22 March – 28 March	3	3 (100%)	0 (0%)	(0%)
29 March – 4 April	1	1 (100%)	0 (0%)	(0%)
5 April – 11 April	2	1 (50%)	0 (0%)	(0%)
12 April – 18 April	1	1 (100%)	0 (0%)	(0%)
Total	16	13 (81%)	1 (8%)	(6%)
Leeds				
25 January – 31 January	0	-	-	-
1 February – 7 February	0	-	-	-
8 February – 14 February	4	3 (75%)	1 (33%)	(25%)
15 February – 21 February	0	-	-	-
22 February – 28 February	0	-	-	-
1 March – 7 March	2	1 (50%)	0 (0%)	(0%)
8 March – 14 March	1	1 (100%)	0 (0%)	(0%)
15 March – 21 March	2	2 (100%)	0 (0%)	(0%)
22 March – 28 March	3	3 (100%)	0 (0%)	(0%)
29 March – 4 April	1	1 (100%)	0 (0%)	(0%)
5 April – 11 April	3	3 (100%)	0 (0%)	(0%)
12 April – 18 April	1	1 (100%)	0 (0%)	(0%)
Total	17	15 (88%)	1 (7%)	(6%)
Cambridge				
25 January – 31 January	2	0 (0%)	0 (0%)	(0%)
1 February – 7 February	1	0 (0%)	0 (0%)	(0%)
8 February – 14 February	3	3 (100%)	1 (33%)	(33%)
15 February – 21 February	1	1 (100%)	1 (100%)	(100%)
22 February – 28 February	2	1 (50%)	0 (0%)	(0%)
1 March – 7 March	2	1 (50%)	0 (0%)	(0%)
8 March – 14 March	3	2 (67%)	1 (50%)	(33%)
15 March – 21 March	2	1 (50%)	0 (0%)	(0%)
22 March – 28 March	2	2 (100%)	0 (0%)	(0%)
29 March – 4 April	2	2 (100%)	1 (50%)	(50%)
5 April – 11 April	3	1 (33%)	0 (0%)	(0%)
12 April – 18 April	1	1 (100%)	0 (0%)	(0%)
Total	24	15 (63%)	4 (27%)	(17%)
Royal Free				
25 January – 31 January	0	-	-	-
1 February – 7 February	0	-	-	-
8 February – 14 February	2	1 (50%)	0 (0%)	(0%)
15 February – 21 February	1	1 (100%)	0 (0%)	(0%)
22 February – 28 February	0	-	-	-
1 March – 7 March	1	1 (100%)	0 (0%)	(0%)
8 March – 14 March	3	1 (33%)	0 (0%)	(0%)
15 March – 21 March	5	2 (40%)	0 (0%)	(0%)
22 March – 28 March	3	2 (67%)	0 (0%)	(0%)
29 March – 4 April	2	2 (100%)	0 (0%)	(0%)
5 April – 11 April	2	2 (100%)	0 (0%)	(0%)
12 April – 18 April	1	0 (0%)	0 (0%)	(0%)
Total	20	12 (60%)	0 (0%)	(0%)

Kings College				
25 January – 31 January	1	0 (0%)	0 (0%)	(0%)
1 February – 7 February	2	0 (0%)	0 (0%)	(0%)
8 February – 14 February	3	3 (100%)	1 (33%)	(33%)
15 February – 21 February	1	0 (0%)	0 (0%)	(0%)
22 February – 28 February	1	0 (0%)	0 (0%)	(0%)
1 March – 7 March	2	1 (50%)	1 (100%)	(50%)
8 March – 14 March	2	1 (50%)	0 (0%)	(0%)
15 March – 21 March	4	4 (100%)	0 (0%)	(0%)
22 March – 28 March	4	2 (50%)	0 (0%)	(0%)
29 March – 4 April	2	2 (100%)	0 (0%)	(0%)
5 April – 11 April	3	3 (100%)	0 (0%)	(0%)
12 April – 18 April	1	0 (0%)	0 (0%)	(0%)
Total	26	16 (62%)	2 (13%)	(8%)
Birmingham				
25 January – 31 January	1	1 (100%)	1 (100%)	(100%)
1 February – 7 February	0	-	-	-
8 February – 14 February	4	3 (75%)	1 (33%)	(25%)
15 February – 21 February	1	1 (100%)	1 (100%)	(100%)
22 February – 28 February	1	0 (0%)	0 (0%)	(0%)
1 March – 7 March	3	0 (0%)	0 (0%)	(0%)
8 March – 14 March	4	2 (50%)	1 (50%)	(25%)
15 March – 21 March	2	2 (100%)	1 (50%)	(50%)
22 March – 28 March	3	3 (100%)	1 (33%)	(33%)
29 March – 4 April	2	1 (50%)	0 (0%)	(0%)
5 April – 11 April	2	2 (100%)	1 (50%)	(50%)
12 April – 18 April	0	-	-	-
Total	23	15 (65%)	7 (47%)	(30%)
Edinburgh				
25 January – 31 January	0	-	-	-
1 February – 7 February	1	0 (0%)	0 (0%)	(0%)
8 February – 14 February	4	2 (50%)	0 (0%)	(0%)
15 February – 21 February	1	1 (100%)	0 (0%)	(0%)
22 February – 28 February	0	-	-	-
1 March – 7 March	1	1 (100%)	0 (0%)	(0%)
8 March – 14 March	2	2 (100%)	0 (0%)	(0%)
15 March – 21 March	2	1 (50%)	0 (0%)	(0%)
22 March – 28 March	4	3 (75%)	0 (0%)	(0%)
29 March – 4 April	2	1 (50%)	0 (0%)	(0%)
5 April – 11 April	2	2 (100%)	0 (0%)	(0%)
12 April – 18 April	1	1 (100%)	0 (0%)	(0%)
Total	20	14 (70%)	0 (0%)	(0%)

Table 3D Reasons liver offers were declined due to logistics for livers transplanted, by centre and week, 25 January 2022 to 18 April 2022

Week	Centre	Centre already retrieving/transplanting	No beds/staff/theatre	Total
DBD named patient				
25 – 31 January	Birmingham	0	3	3
1 – 7 February	Birmingham	2	1	3
8 – 14 February	Cambridge	0	1	1
	Birmingham	0	1	1
15 – 21 February	Cambridge	0	1	1
22 – 28 February	Cambridge	0	3	3
	Birmingham	0	1	1
8 – 14 March	Cambridge	1	0	1
15 – 21 March	Birmingham	2	3	5
22 – 28 March	Birmingham	1	2	3
29 – 4 April	Kings	1	0	1
5 – 11 April	Leeds	1	0	1
	Birmingham	0	1	1
12 – 18 April	Birmingham	1	1	2
	Edinburgh	1	0	1
DBD fast-track				
1 – 7 February	Edinburgh	1	0	1
22 – 28 February	Cambridge	0	1	1
15 – 21 March	Birmingham	1	2	3
22 – 28 March	Cambridge	1	0	1
29 – 4 April	Cambridge	0	1	1
12 – 18 April	Royal Free	1	0	1
	Kings	1	0	1
DCD				
25 – 31 January	Birmingham	0	1	1
8 – 14 February	Leeds	1	0	1
	Cambridge	1	0	1
	Kings	1	0	1
	Birmingham	0	1	1
15 – 21 February	Cambridge	0	1	1
	Birmingham	1	0	1
1 – 7 March	Kings	1	0	1
8 – 14 March	Newcastle	1	0	1
	Cambridge	0	1	1
	Birmingham	0	1	1
15 – 21 March	Birmingham	0	1	1
22 – 28 March	Birmingham	0	1	1
29 – 4 April	Cambridge	1	0	1
5 – 11 April	Birmingham	0	1	1

DCD Offering

Table 4 Summary of fast-track offering for DCD livers between 3 November 2020 and 18 April 2022							
	<i>Number of offers</i>	<i>Number of livers fast-tracked</i>		<i>Number of fast-track offers after x-clamp</i>		<i>Number of fast-track offers resulted in transplant</i>	
	N	N	%	N	% of fast-tracked	N	% of fast-tracked
3 November – 30 November 2020	52	37	71	1	3	4	11
1 December – 28 December 2020	53	34	64	1	3	2	6
29 December – 25 January 2021	46	43	93	2	5	2	5
26 January – 22 February 2021	27	20	74	2	10	1	5
23 February – 22 March 2021	53	36	68	7	19	3	8
23 March – 19 April 2021	52	47	90	8	17	6	13
20 April – 17 May 2021	67	48	72	4	8	7	15
18 May – 14 June 2021	77	54	70	7	13	7	13
15 June – 12 July 2021	67	42	63	7	17	5	12
13 July – 9 August 2021	56	43	77	8	19	2	5
10 August – 6 September 2021	57	43	75	3	7	2	5
7 September – 4 October 2021	66	47	71	7	15	7	15
5 October – 1 November 2021	59	38	64	4	11	3	8
2 November – 29 November 2021	74	55	74	8	15	4	7
30 November – 27 December 2021	59	38	64	6	16	1	3
28 December – 24 January 2022	57	39	68	5	13	4	10
25 January – 21 February 2022	61	45	74	5	11	4	9
22 February – 21 March 2022	74	55	77	11	20	5	9
22 March – 18 April 2022	67	59	88	5	8	8	14
Total	1124	823	73	101	12	77	9

Figure 9 Number of patients on the liver transplant list at the end of each month January 2019 - 20 April 2022

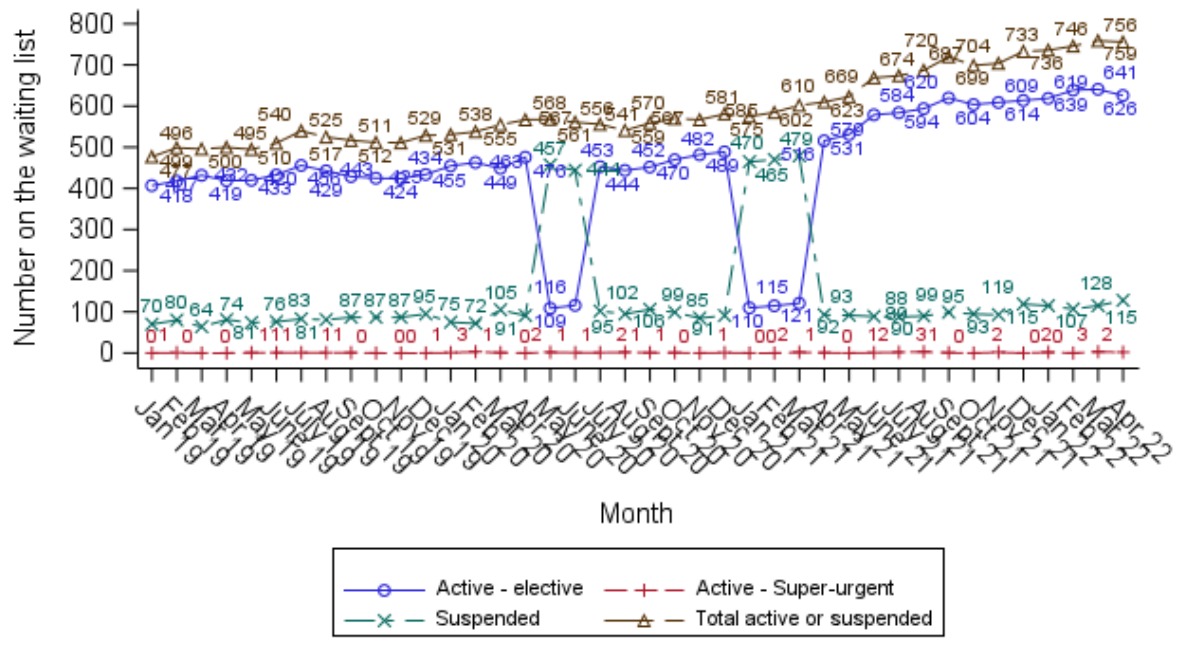
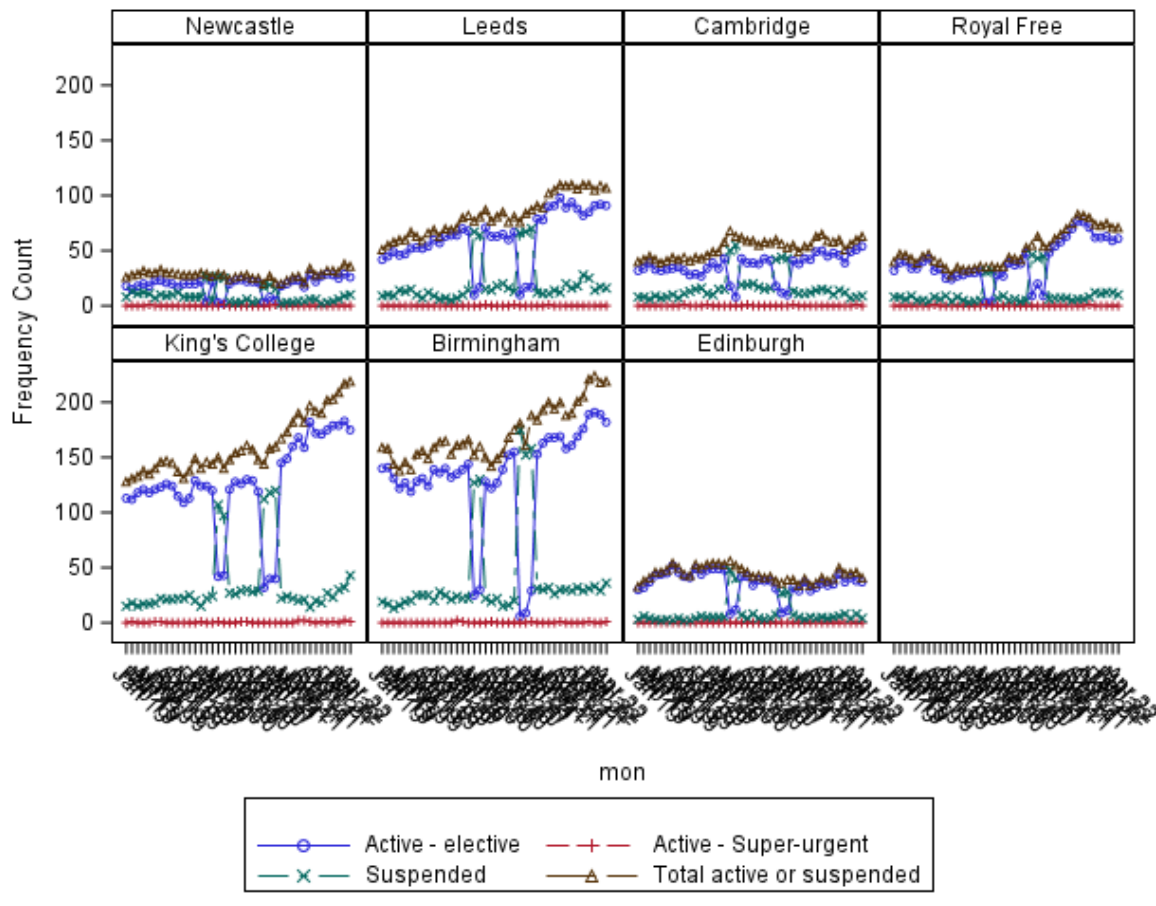


Figure 10 Number of patients on the liver transplant list at the end of each month, by centre, January 2019 - 20 April 2022



626 patients active on the UK elective liver list on 20 April 2022:

- 592 adult
- 34 paediatric

One paediatric blood group B patient at Kings and one adult blood group O patient at Birmingham are currently active on the super-urgent list

Additional 14 patients currently active on intestinal list and 8 suspended

- 10 also require a liver (8 active and 2 suspended)

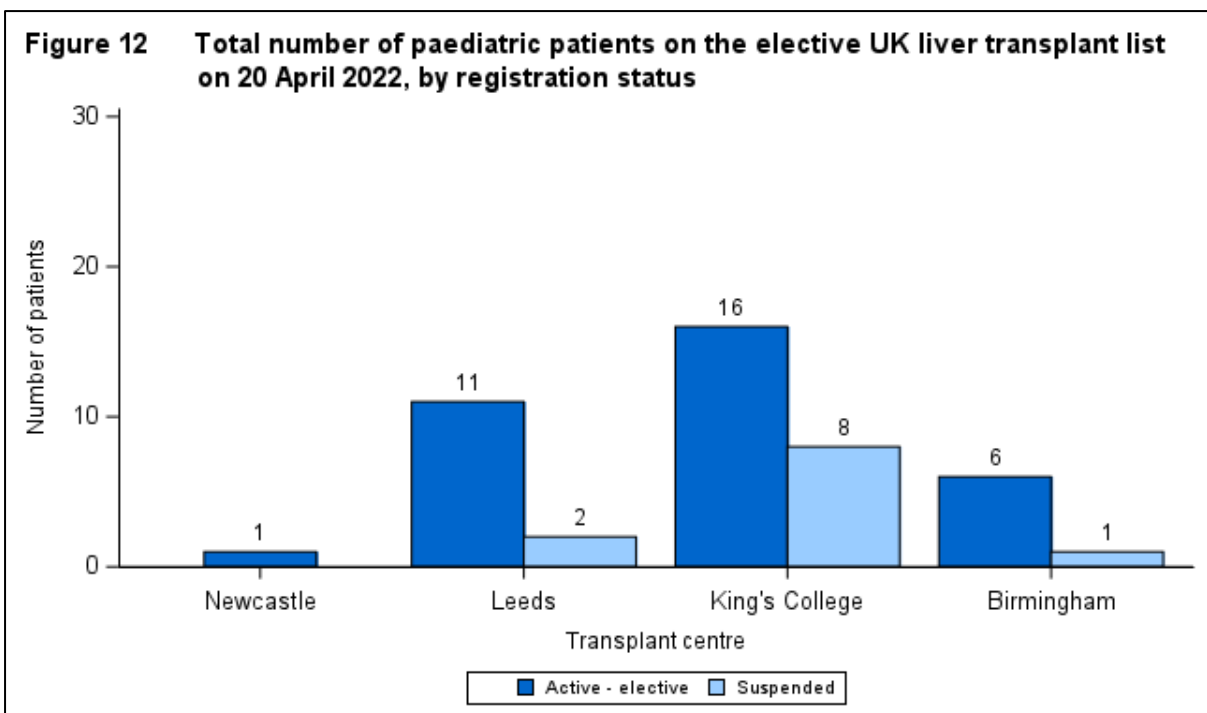
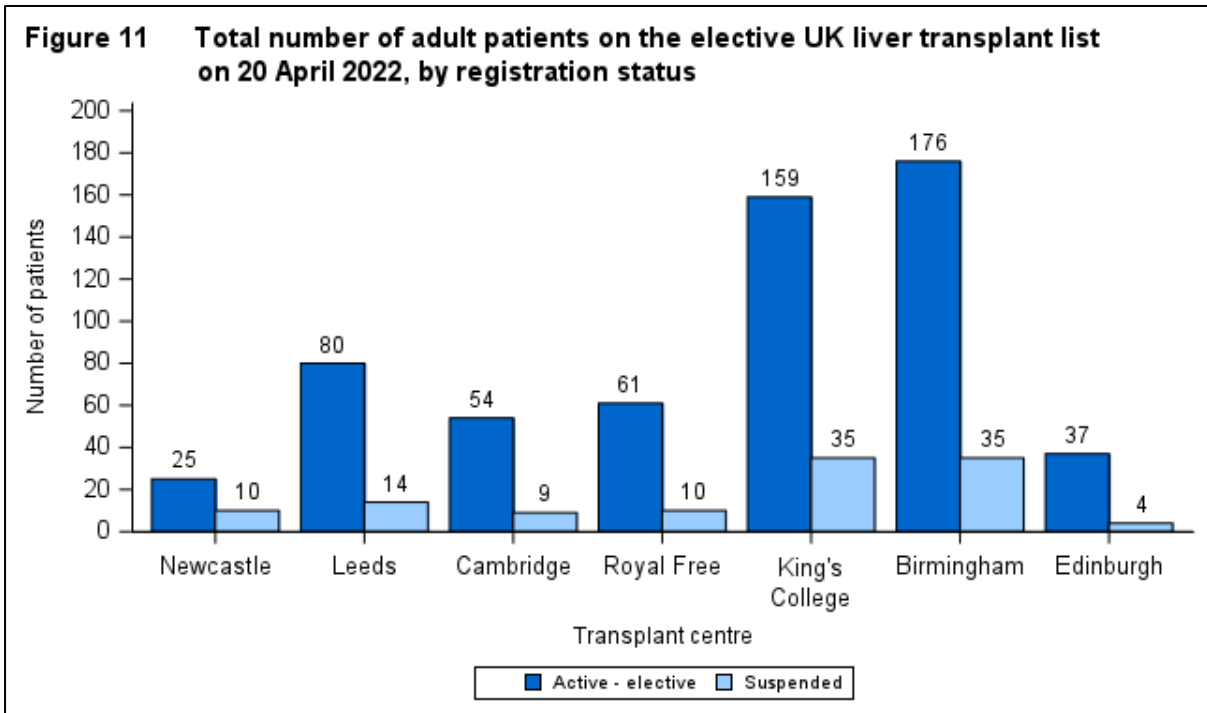


Figure 13 Number of new registrations onto the UK liver transplant list, by urgency status, 1 January 2019 to 20 April 2022

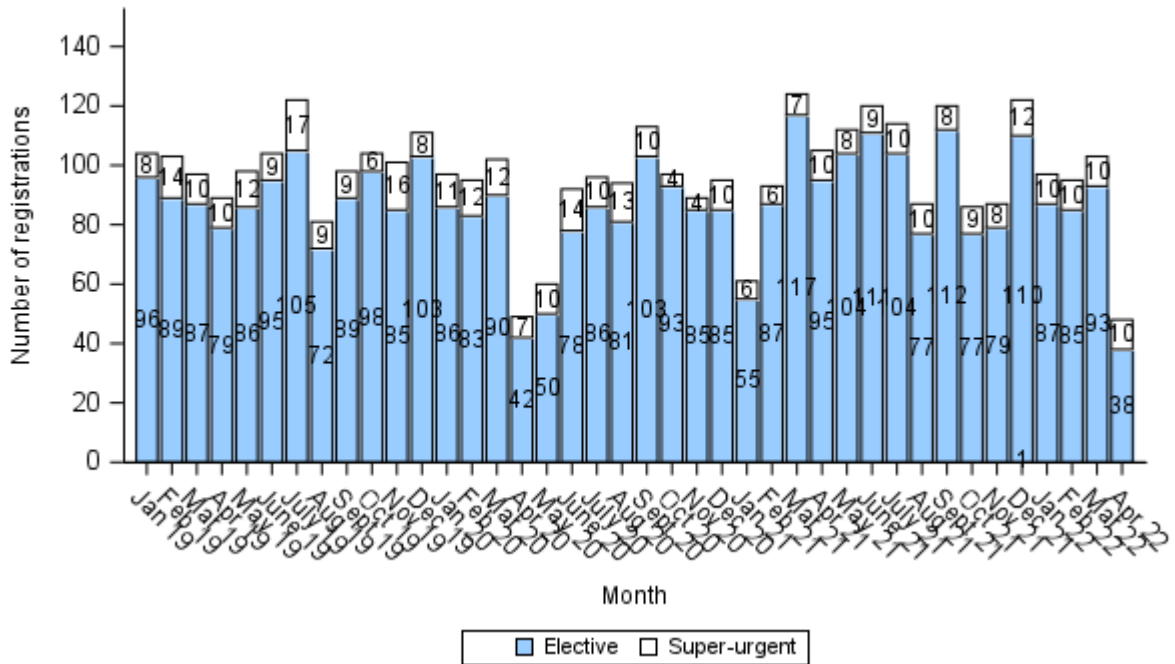


Figure 13A Number of new registrations onto the UK liver transplant list, by transplant centre and urgency status, 1 January 2019 to 20 April 2022

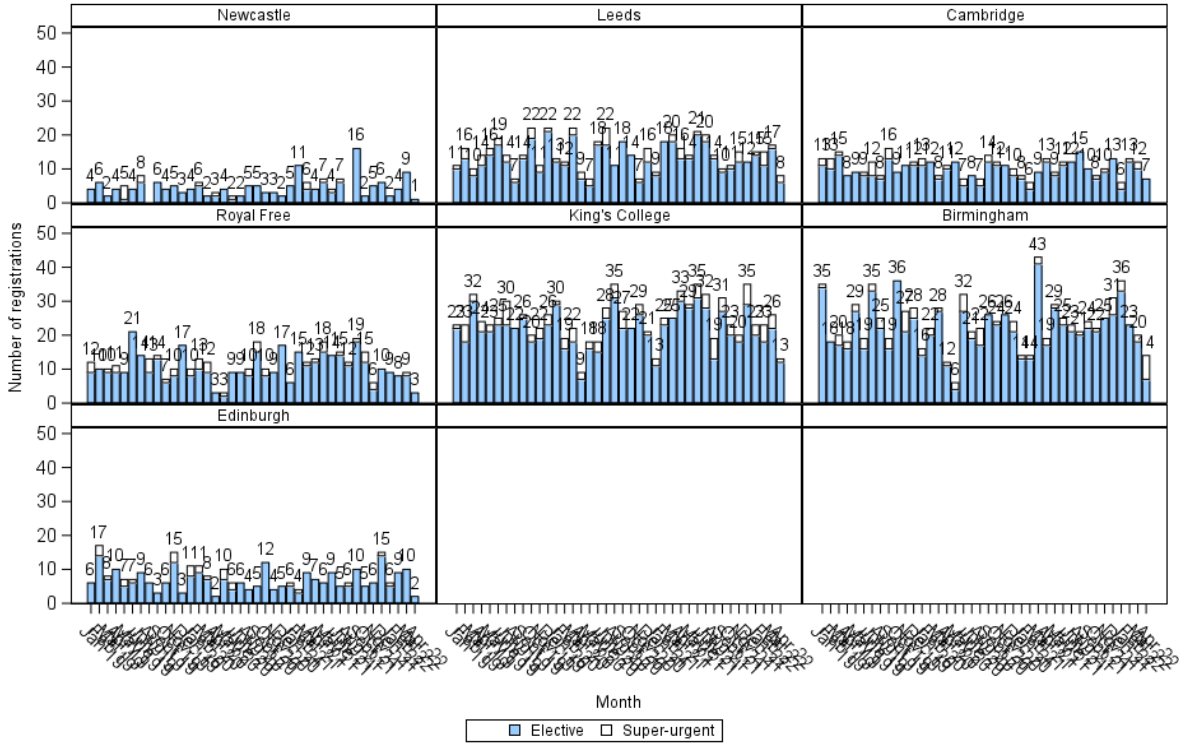


Figure 14 Number of registrations, deaths and removals by month since 1 January 2019

