

NHS BLOOD & TRANSPLANT

Liver offering outcome, 4 February 2020 to 15 November 2021

This report examines the offering outcome of livers offered for transplantation from UK deceased donors between 4 February 2020 and 15 November 2021 as recorded on the UK Transplant Registry on 17 November 2021.

Figure 1 Number of livers from UK deceased donors offered, retrieved and transplanted, 4 February 2020 to 15 November 2021

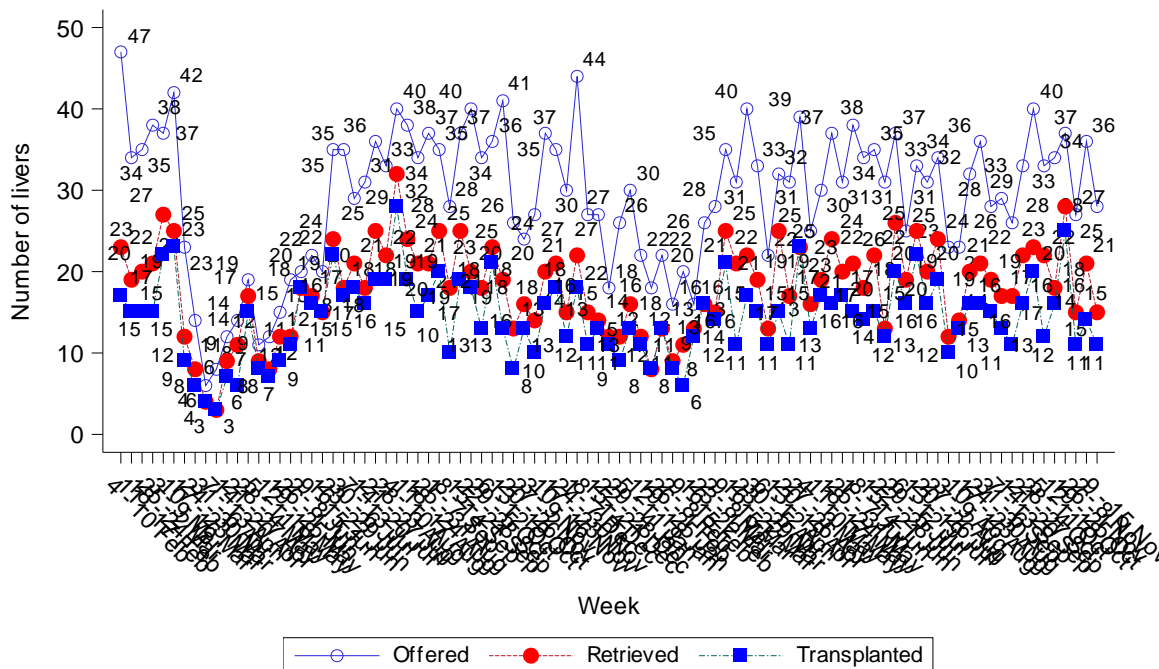


Figure 2A Number of livers from UK DBD donors offered, retrieved and transplanted, 4 February 2020 to 15 November 2021

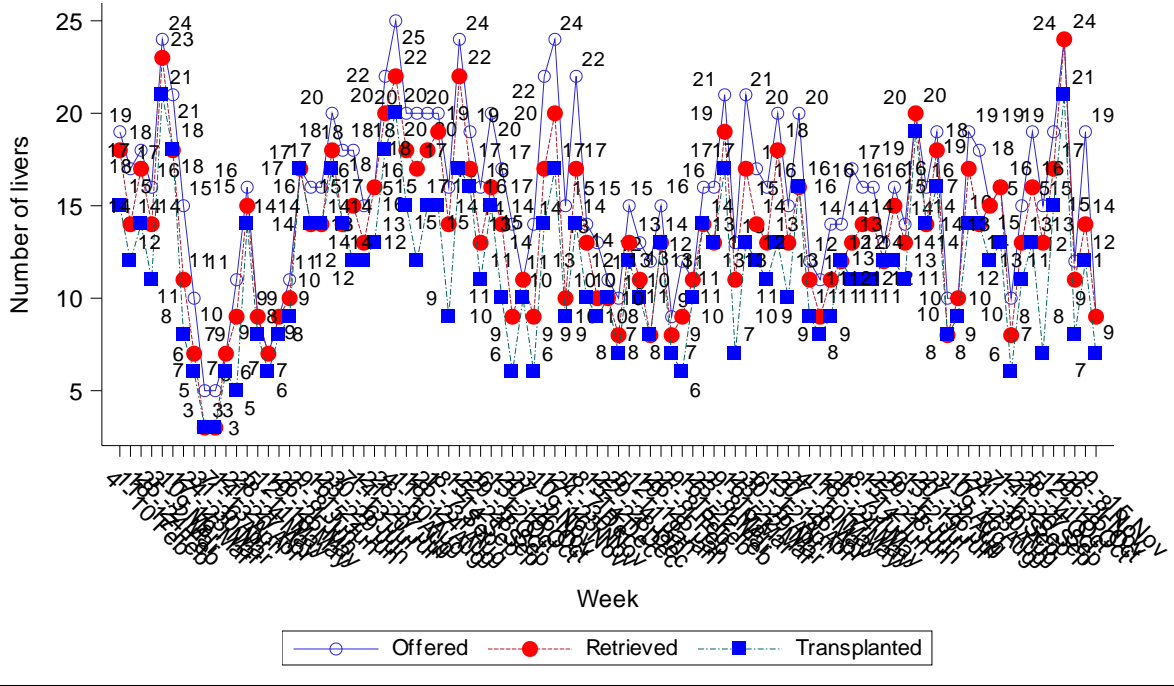


Figure 2B Number of livers from UK DCD donors offered, retrieved and transplanted, 4 February 2020 to 15 November 2021

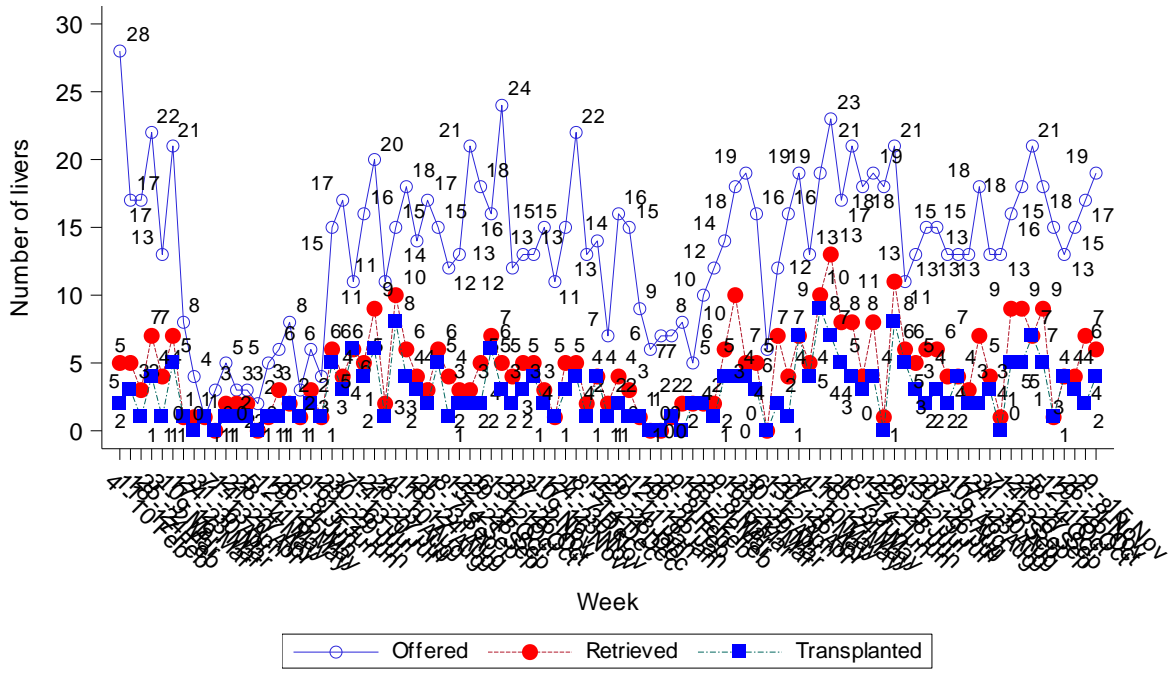


Figure 3 Number of deceased donor liver transplants performed in the UK, by donor type, 4 February 2020 to 15 November 2021

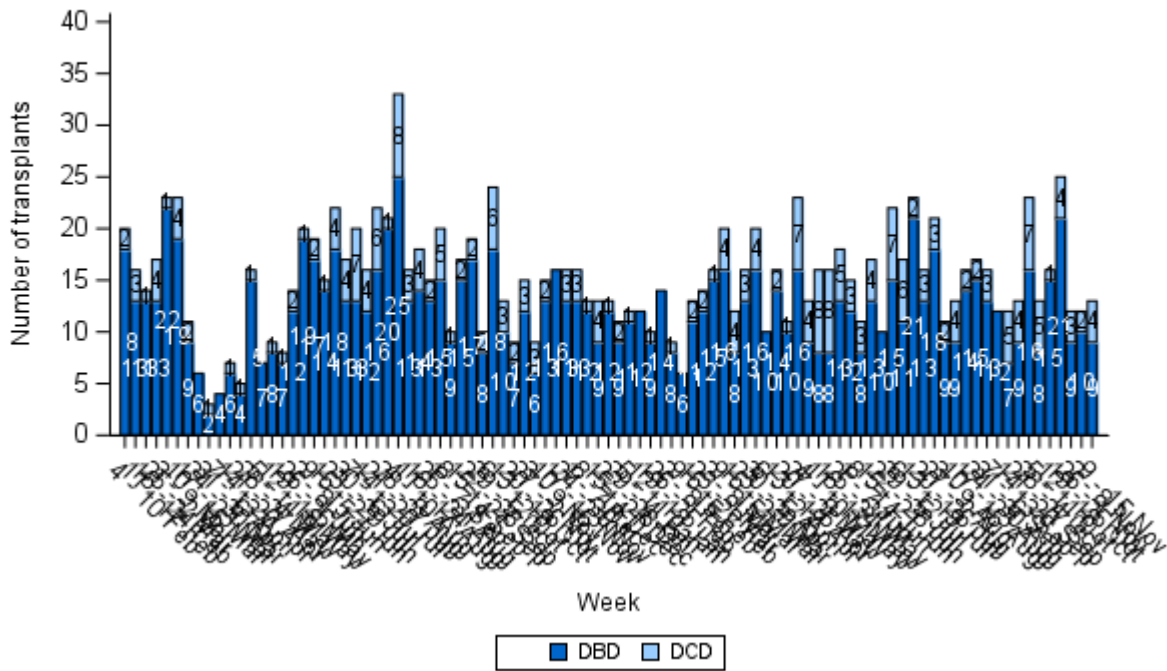


Figure 4A Number of deceased donor liver transplants performed in the UK, by transplant centre and donor type, 24 August 2021 to 15 November 2021

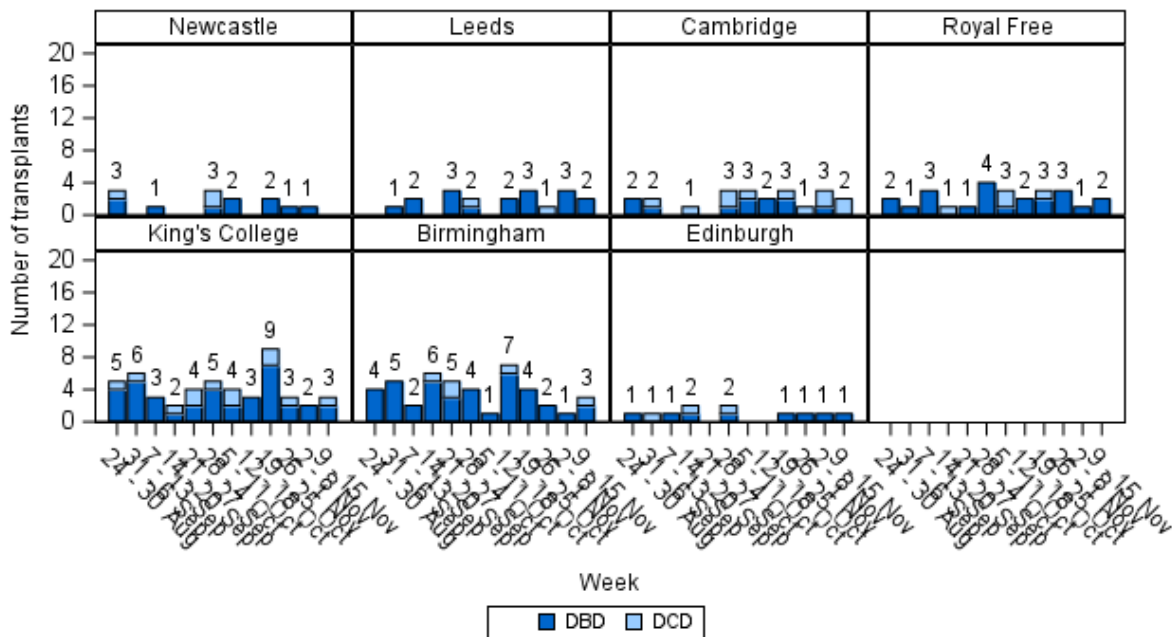


Figure 5 Number of deceased donor liver transplants performed in the UK, by urgency status, 4 February 2020 to 15 November 2021

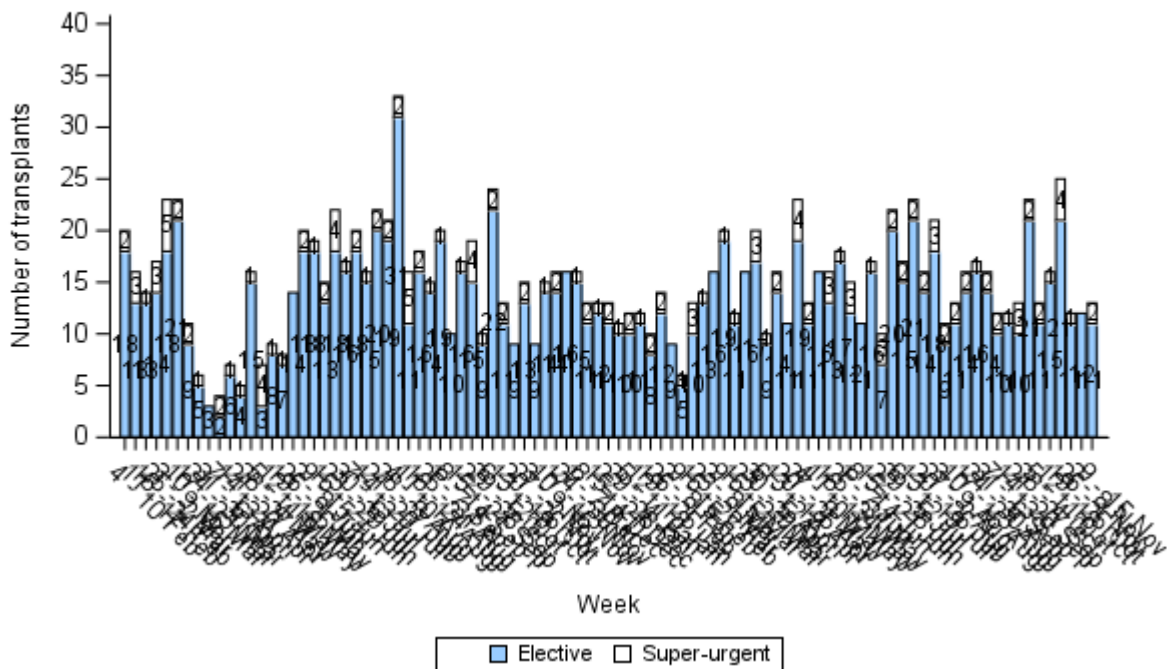


Figure 6A Number of deceased donor liver transplants performed in the UK, by transplant centre and urgency status, 24 August 2021 to 15 November 2021

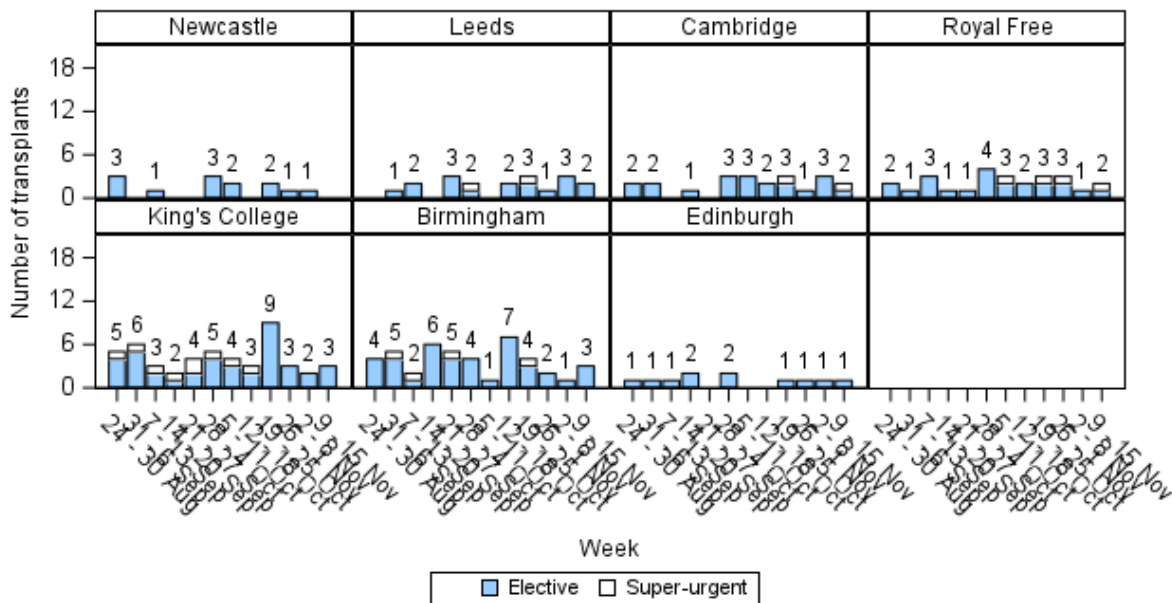


Figure 7 Number of deceased donor liver transplants performed in the UK, by age group, 4 February 2020 to 15 November 2021

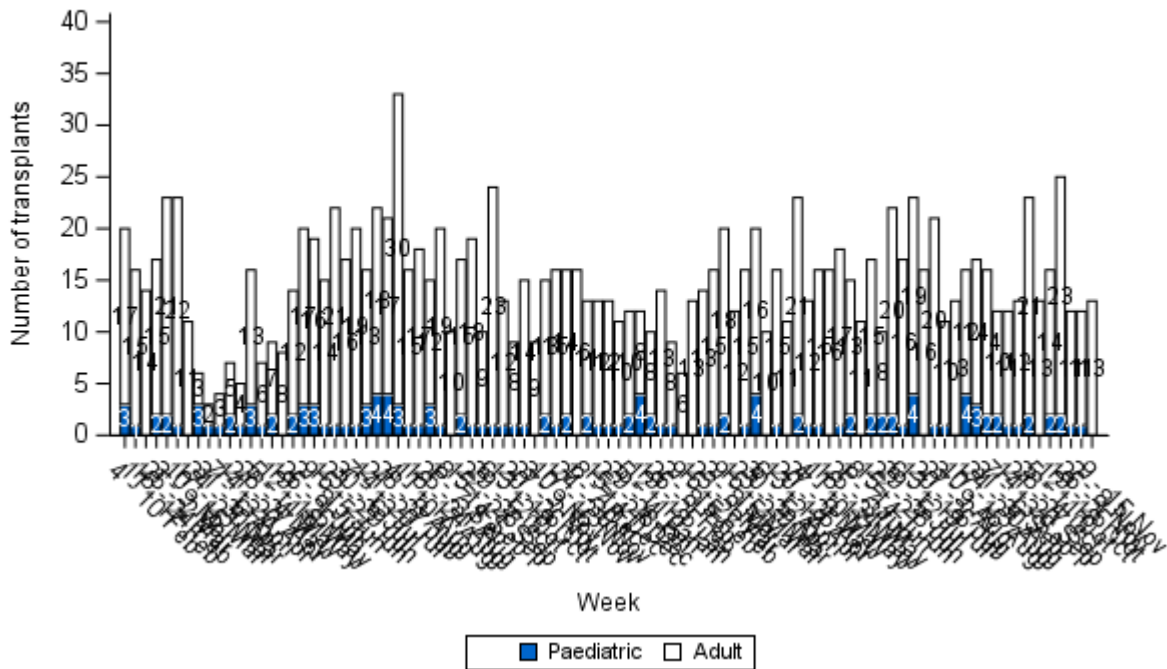
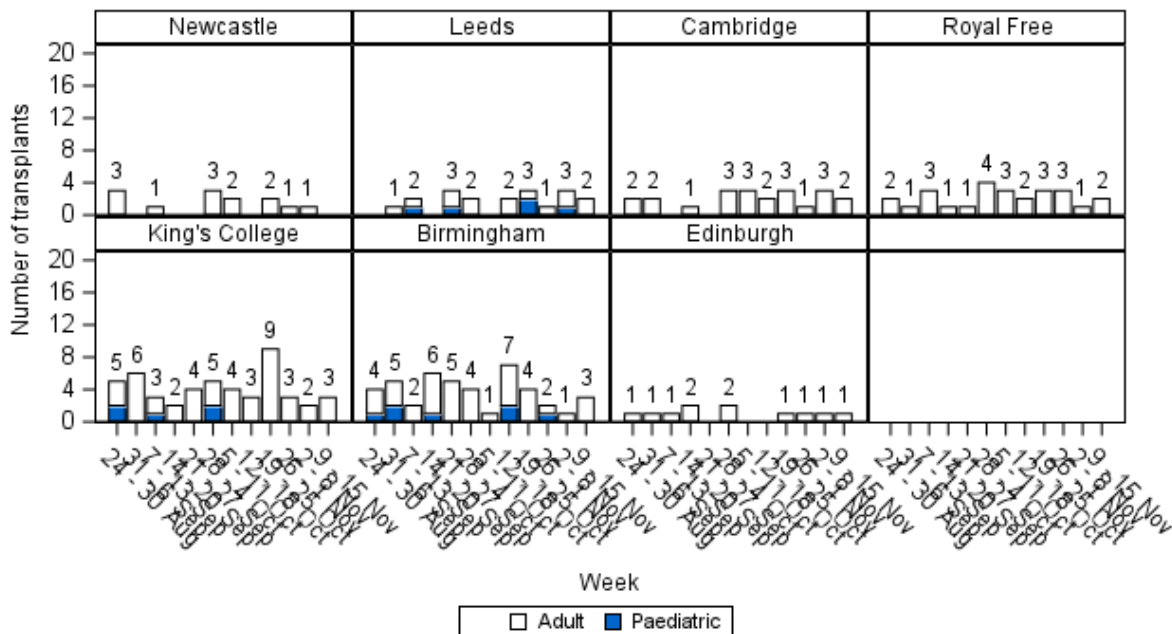
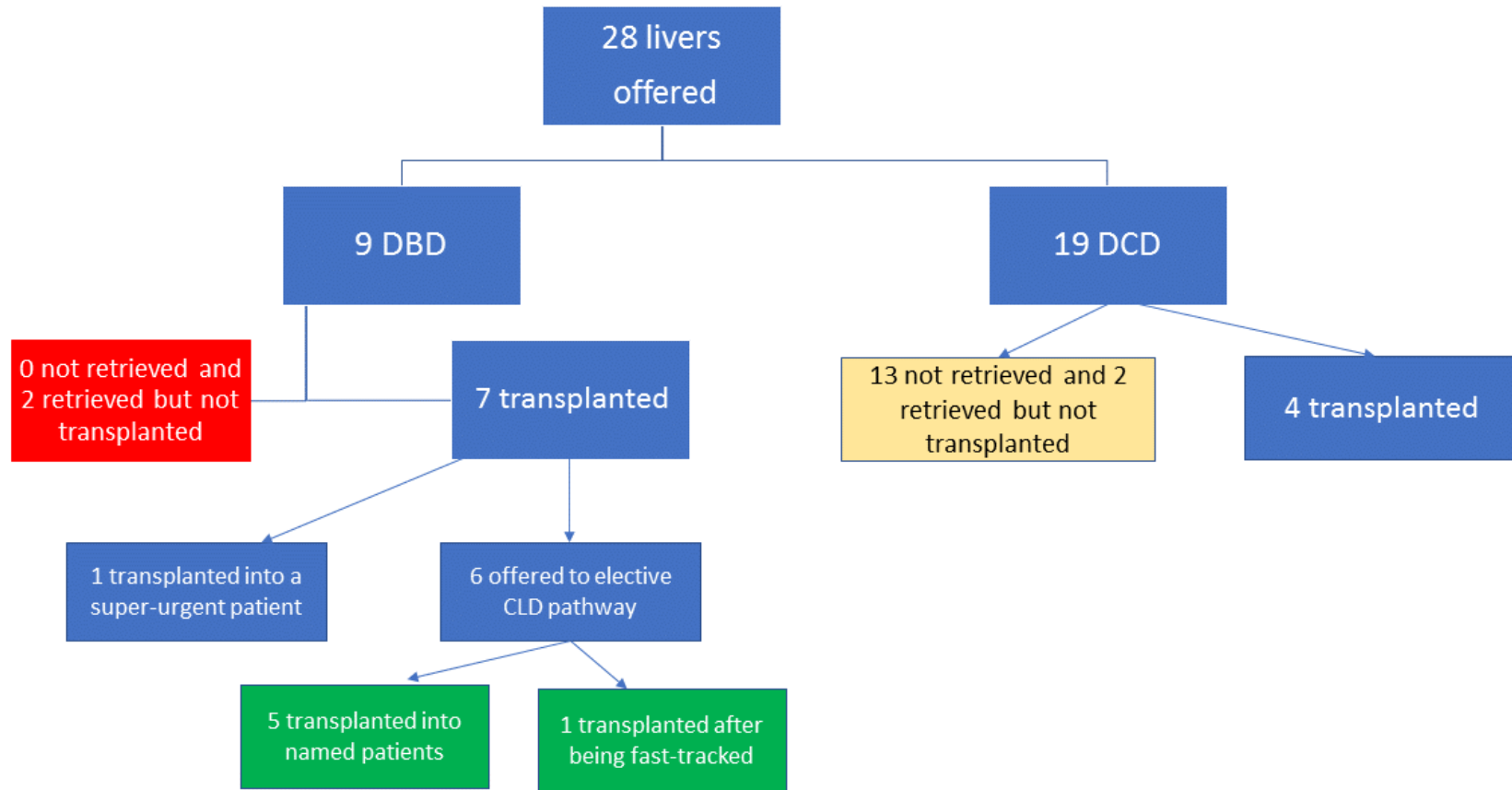


Figure 8A Number of deceased donor liver transplants performed in the UK, by transplant centre and age group, 24 August 2021 to 15 November 2021



Liver offering outcomes 9th November – 15th November 2021



DBD Offering

Table 1 Summary of fast-track offering for DBD livers between 3 November 2020 and 1 November 2021							
	<i>Number of offers</i>	<i>Number of livers fast-tracked</i>		<i>Number of fast-track offers after x-clamp</i>		<i>Number of fast-track offers resulted in transplant</i>	
	N	N	%	N	% of fast-tracked	N	% of fast-tracked
3 November – 30 November 2020	74	37	50	13	35	8	22
1 December – 28 December 2020	59	21	36	9	43	10	48
29 December – 25 January 2021	49	23	47	6	26	13	57
26 January – 22 February 2021	48	17	35	10	59	10	59
23 February – 22 March 2021	66	29	44	12	41	16	55
23 March – 19 April 2021	74	30	41	15	50	8	27
20 April – 17 May 2021	58	18	31	7	39	5	28
18 May – 14 June 2021	61	22	36	8	36	6	27
15 June – 12 July 2021	58	19	33	8	42	8	42
13 July – 9 August 2021	64	16	25	9	56	10	63
10 August – 6 September 2021	62	15	24	7	47	4	27
7 September – 4 October 2021	57	24	42	14	58	9	38
5 October – 1 November 2021	71	25	35	17	68	9	36
2 November – 15 November 2021	28	7	25	6	86	2	29
Total	829	303	37	141	47	118	39

Table 3 DBD adult elective and DCD decline rates for livers transplanted, by week, 17 August to 15 November 2021

	No. of offers	No. of offers declined (%)	Offers declined due to logistical reasons	
			N (% declined)	(% of all offers)
DBD Named Patient				
17 August – 23 August	19	10 (53%)	3 (30%)	(16%)
24 August – 30 August	41	30 (73%)	7 (23%)	(17%)
31 August – 6 September	39	29 (74%)	5 (17%)	(13%)
7 September – 13 September	30	24 (80%)	9 (38%)	(30%)
14 September – 20 September	9	3 (33%)	1 (33%)	(11%)
21 September – 27 September	18	10 (56%)	1 (10%)	(6%)
28 September – 4 October	40	33 (83%)	6 (18%)	(15%)
5 October – 11 October	16	11 (69%)	1 (9%)	(6%)
12 October – 18 October	34	25 (74%)	2 (8%)	(6%)
19 October – 25 October	59	44 (75%)	2 (5%)	(3%)
26 October – 1 November	25	17 (68%)	1 (6%)	(4%)
2 November – 8 November	28	18 (64%)	3 (17%)	(11%)
9 November – 15 November	16	11 (69%)	2 (18%)	(13%)
Total	374	265 (71%)	43 (16%)	(11%)
DBD Fast-track				
17 August – 23 August	4	3 (75%)	2 (67%)	(50%)
24 August – 30 August	5	4 (80%)	0 (0%)	(0%)
31 August – 6 September	3	3 (100%)	0 (0%)	(0%)
7 September – 13 September	22	18 (82%)	5 (28%)	(23%)
14 September – 20 September	0	-	-	-
21 September – 27 September	1	0 (0%)	0 (0%)	(0%)
28 September – 4 October	16	12 (75%)	0 (0%)	(0%)
5 October – 11 October	11	9 (82%)	0 (0%)	(0%)
12 October – 18 October	30	27 (90%)	3 (11%)	(10%)
19 October – 25 October	21	18 (86%)	6 (33%)	(29%)
26 October – 1 November	0	-	-	-
2 November – 8 November	7	6 (86%)	0 (0%)	(0%)
9 November – 15 November	2	1 (50%)	1 (100%)	(50%)
Total	122	101 (83%)	17 (17%)	(14%)
DCD				
17 August – 23 August	8	6 (75%)	0 (0%)	(0%)
24 August – 30 August	2	0 (0%)	0 (0%)	(0%)
31 August – 6 September	7	4 (57%)	2 (50%)	(29%)
7 September – 13 September	0	-	-	-
14 September – 20 September	24	19 (79%)	4 (21%)	(17%)
21 September – 27 September	16	11 (69%)	1 (9%)	(6%)
28 September – 4 October	25	19 (76%)	6 (32%)	(24%)
5 October – 11 October	12	7 (58%)	1 (14%)	(8%)
12 October – 18 October	7	6 (86%)	0 (0%)	(0%)
19 October – 25 October	11	7 (64%)	2 (29%)	(18%)
26 October – 1 November	4	1 (20%)	1 (100%)	(25%)
2 November – 8 November	8	7 (88%)	1 (14%)	(13%)
9 November – 15 November	11	7 (64%)	1 (14%)	(9%)
Total	135	94 (70%)	19 (20%)	(14%)
Overall Total	631	460 (73%)	79 (17%)	(13%)

Table 4A DBD adult elective named patient offers decline rates for livers transplanted, by centre and week, 17 August to 15 November 2021

	No. of offers	No. of offers declined (%)	Offers declined due to logistical reasons N (% declined)	(% of all offers)
Newcastle				
17 August – 23 August	1	0 (0%)	0 (0%)	(0%)
24 August – 30 August	3	1 (33%)	0 (0%)	(0%)
31 August – 6 September	2	2 (100%)	0 (0%)	(0%)
7 September – 13 September	1	1 (100%)	0 (0%)	(0%)
14 September – 20 September	0	-	-	-
21 September – 27 September	0	-	-	-
28 September – 4 October	3	3 (100%)	0 (0%)	(0%)
5 October – 11 October	1	0 (0%)	0 (0%)	(0%)
12 October – 18 October	9	9 (100%)	0 (0%)	(0%)
19 October – 25 October	17	15 (88%)	0 (0%)	(0%)
26 October – 1 November	7	6 (86%)	0 (0%)	(0%)
2 November – 8 November	9	8 (89%)	0 (0%)	(0%)
9 November – 15 November	3	3 (100%)	0 (0%)	(0%)
Total	56	48 (86%)	0 (0%)	(0%)
Leeds				
17 August – 23 August	5	3 (60%)	1 (33%)	(20%)
24 August – 30 August	9	9 (100%)	0 (0%)	(0%)
31 August – 6 September	3	2 (67%)	0 (0%)	(0%)
7 September – 13 September	4	3 (75%)	3 (100%)	(75%)
14 September – 20 September	0	-	-	-
21 September – 27 September	3	0 (0%)	0 (0%)	(0%)
28 September – 4 October	7	7 (100%)	1 (14%)	(14%)
5 October – 11 October	1	1 (100%)	1 (100%)	(100%)
12 October – 18 October	3	2 (67%)	1 (50%)	(33%)
19 October – 25 October	2	1 (100%)	0 (0%)	(0%)
26 October – 1 November	1	1 (100%)	0 (0%)	(0%)
2 November – 8 November	3	0 (0%)	0 (0%)	(0%)
9 November – 15 November	3	1 (33%)	0 (0%)	(0%)
Total	44	30 (68%)	7 (23%)	(16%)
Cambridge				
17 August – 23 August	1	1 (100%)	0 (0%)	(0%)
24 August – 30 August	6	4 (67%)	0 (0%)	(0%)
31 August – 6 September	8	7 (88%)	0 (0%)	(0%)
7 September – 13 September	3	3 (100%)	2 (67%)	(67%)
14 September – 20 September	0	-	-	-
21 September – 27 September	0	-	-	-
28 September – 4 October	6	5 (83%)	0 (0%)	(0%)
5 October – 11 October	3	1 (33%)	0 (0%)	(0%)
12 October – 18 October	4	3 (75%)	0 (0%)	(0%)
19 October – 25 October	3	3 (100%)	0 (0%)	(0%)
26 October – 1 November	3	3 (100%)	0 (0%)	(0%)
2 November – 8 November	4	3 (75%)	3 (100%)	(75%)
9 November – 15 November	1	1 (100%)	0 (0%)	(0%)
Total	42	34 (81%)	5 (15%)	(12%)
Royal Free				
17 August – 23 August	3	1 (33%)	0 (0%)	(0%)
24 August – 30 August	5	4 (80%)	0 (0%)	(0%)
31 August – 6 September	4	3 (75%)	0 (0%)	(0%)
7 September – 13 September	4	3 (75%)	1 (33%)	(25%)
14 September – 20 September	1	1 (100%)	0 (0%)	(0%)
21 September – 27 September	1	0 (0%)	0 (0%)	(0%)

28 September – 4 October	5	2 (40%)	0 (0%)	(0%)
5 October – 11 October	4	3 (75%)	0 (0%)	(0%)
12 October – 18 October	4	3 (75%)	0 (0%)	(0%)
19 October – 25 October	15	12 (80%)	1 (8%)	(7%)
26 October – 1 November	3	1 (33%)	0 (0%)	(0%)
2 November – 8 November	4	3 (75%)	0 (0%)	(0%)
9 November – 15 November	4	3 (75%)	0 (0%)	(0%)
Total	57	39 (68%)	2 (5%)	(4%)
Kings College				
17 August – 23 August	5	2 (40%)	0 (0%)	(0%)
24 August – 30 August	3	0 (0%)	0 (0%)	(0%)
31 August – 6 September	11	7 (64%)	0 (0%)	(0%)
7 September – 13 September	6	4 (67%)	0 (0%)	(0%)
14 September – 20 September	2	1 (50%)	1 (100%)	(50%)
21 September – 27 September	10	8 (80%)	0 (0%)	(0%)
28 September – 4 October	10	9 (90%)	1 (11%)	(10%)
5 October – 11 October	5	4 (80%)	0 (0%)	(0%)
12 October – 18 October	9	6 (67%)	0 (0%)	(0%)
19 October – 25 October	15	9 (60%)	0 (0%)	(0%)
26 October – 1 November	5	3 (60%)	0 (0%)	(0%)
2 November – 8 November	4	1 (25%)	0 (0%)	(0%)
9 November – 15 November	2	1 (50%)	0 (0%)	(0%)
Total	87	55 (63%)	2 (4%)	(2%)
Birmingham				
17 August – 23 August	2	2 (100%)	2 (100%)	(100%)
24 August – 30 August	11	8 (73%)	7 (88%)	(64%)
31 August – 6 September	9	6 (67%)	5 (83%)	(56%)
7 September – 13 September	5	4 (80%)	3 (75%)	(60%)
14 September – 20 September	5	1 (20%)	0 (0%)	(0%)
21 September – 27 September	4	2 (50%)	1 (50%)	(25%)
28 September – 4 October	6	5 (83%)	4 (80%)	(67%)
5 October – 11 October	2	2 (100%)	0 (0%)	(0%)
12 October – 18 October	4	1 (25%)	1 (100%)	(25%)
19 October – 25 October	3	1 (33%)	1 (100%)	(33%)
26 October – 1 November	5	3 (60%)	1 (33%)	(20%)
2 November – 8 November	3	2 (67%)	0 (0%)	(0%)
9 November – 15 November	2	2 (100%)	2 (100%)	(100%)
Total	61	39 (64%)	27 (69%)	(44%)
Edinburgh				
17 August – 23 August	1	1 (100%)	0 (0%)	(0%)
24 August – 30 August	4	4 (100%)	0 (0%)	(0%)
31 August – 6 September	2	2 (100%)	0 (0%)	(0%)
7 September – 13 September	7	6 (86%)	0 (0%)	(0%)
14 September – 20 September	1	0 (0%)	0 (0%)	(0%)
21 September – 27 September	0	-	-	-
28 September – 4 October	3	2 (67%)	0 (0%)	(0%)
5 October – 11 October	0	-	-	-
12 October – 18 October	1	1 (100%)	0 (0%)	(0%)
19 October – 25 October	4	3 (75%)	0 (0%)	(0%)
26 October – 1 November	1	0 (0%)	0 (0%)	(0%)
2 November – 8 November	1	1 (100%)	0 (0%)	(0%)
9 November – 15 November	1	0 (0%)	0 (0%)	(0%)
Total	26	20 (77%)	0 (0%)	(0%)

Table 4B DBD adult fast-track offer decline rates for livers transplanted, by centre and week, 17 August to 15 November 2021

	No. of offers	No. of offers declined (%)	Offers declined due to logistical reasons N (% declined)	(% of all offers)
Newcastle				
17 August – 23 August	0	-	-	-
24 August – 30 August	0	-	-	-
31 August – 6 September	1	1 (100%)	0 (0%)	(0%)
7 September – 13 September	3	2 (67%)	0 (0%)	(0%)
14 September – 20 September	0	-	-	-
21 September – 27 September	0	-	-	-
28 September – 4 October	3	3 (100%)	0 (0%)	(0%)
5 October – 11 October	2	2 (100%)	0 (0%)	(0%)
12 October – 18 October	5	5 (100%)	0 (0%)	(0%)
19 October – 25 October	4	4 (100%)	0 (0%)	(0%)
26 October – 1 November	0	-	-	-
2 November – 8 November	1	1 (100%)	0 (0%)	(0%)
9 November – 15 November	0	-	-	-
Total	19	18 (95%)	0 (0%)	(0%)
Leeds				
17 August – 23 August	1	1 (100%)	1 (100%)	(100%)
24 August – 30 August	1	1 (100%)	0 (0%)	(0%)
31 August – 6 September	0	-	-	-
7 September – 13 September	2	2 (100%)	2 (100%)	(100%)
14 September – 20 September	0	-	-	-
21 September – 27 September	0	-	-	-
28 September – 4 October	3	3 (100%)	0 (0%)	(0%)
5 October – 11 October	1	1 (100%)	0 (0%)	(0%)
12 October – 18 October	5	4 (80%)	0 (0%)	(0%)
19 October – 25 October	3	3 (100%)	3 (100%)	(100%)
26 October – 1 November	0	-	-	-
2 November – 8 November	1	1 (100%)	0 (0%)	(0%)
9 November – 15 November	0	-	-	-
Total	17	16 (94%)	6 (38%)	(35%)
Cambridge				
17 August – 23 August	0	-	-	-
24 August – 30 August	1	1 (100%)	0 (0%)	(0%)
31 August – 6 September	1	1 (100%)	0 (0%)	(0%)
7 September – 13 September	4	4 (100%)	1 (25%)	(25%)
14 September – 20 September	0	-	-	-
21 September – 27 September	0	-	-	-
28 September – 4 October	1	1 (100%)	0 (0%)	(0%)
5 October – 11 October	2	2 (100%)	0 (0%)	(0%)
12 October – 18 October	3	2 (67%)	0 (0%)	(0%)
19 October – 25 October	4	2 (50%)	0 (0%)	(0%)
26 October – 1 November	0	-	-	-
2 November – 8 November	1	1 (100%)	0 (0%)	(0%)
9 November – 15 November	0	-	-	-
Total	17	14 (82%)	1 (7%)	(6%)
Royal Free				
17 August – 23 August	0	-	-	-
24 August – 30 August	1	1 (100%)	0 (0%)	(0%)
31 August – 6 September	0	-	-	-
7 September – 13 September	4	2 (50%)	0 (0%)	(0%)
14 September – 20 September	0	-	-	-
21 September – 27 September	0	-	-	-
28 September – 4 October	2	1 (50%)	0 (0%)	(0%)

5 October – 11 October	1	1 (100%)	0 (0%)	(0%)
12 October – 18 October	5	5 (100%)	1 (20%)	(20%)
19 October – 25 October	2	2 (100%)	1 (50%)	(50%)
26 October – 1 November	0	-	-	-
2 November – 8 November	1	1 (100%)	0 (0%)	(0%)
9 November – 15 November	0	-	-	-
Total	16	13 (81%)	2 (15%)	(13%)
Kings College				
17 August – 23 August	1	0 (0%)	0 (0%)	(0%)
24 August – 30 August	0	-	-	-
31 August – 6 September	0	-	-	-
7 September – 13 September	0	-	-	-
14 September – 20 September	0	-	-	-
21 September – 27 September	0	-	-	-
28 September – 4 October	1	0 (0%)	0 (0%)	(0%)
5 October – 11 October	1	1 (100%)	0 (0%)	(0%)
12 October – 18 October	5	5 (100%)	1 (20%)	(20%)
19 October – 25 October	1	1 (100%)	1 (100%)	(100%)
26 October – 1 November	0	-	-	-
2 November – 8 November	1	1 (100%)	0 (0%)	(0%)
9 November – 15 November	0	-	-	-
Total	10	8 (80%)	2 (25%)	(20%)
Birmingham				
17 August – 23 August	1	1 (100%)	1 (100%)	(100%)
24 August – 30 August	1	1 (100%)	0 (0%)	(0%)
31 August – 6 September	1	1 (100%)	0 (0%)	(0%)
7 September – 13 September	4	3 (75%)	1 (33%)	(25%)
14 September – 20 September	0	-	-	-
21 September – 27 September	1	0 (0%)	0 (0%)	(0%)
28 September – 4 October	4	2 (50%)	0 (0%)	(0%)
5 October – 11 October	2	0 (0%)	0 (0%)	(0%)
12 October – 18 October	3	2 (67%)	1 (50%)	(33%)
19 October – 25 October	3	2 (67%)	0 (0%)	(0%)
26 October – 1 November	0	-	-	-
2 November – 8 November	1	0 (0%)	0 (0%)	(0%)
9 November – 15 November	1	0 (0%)	0 (0%)	(0%)
Total	22	12 (55%)	3 (25%)	(14%)
Edinburgh				
17 August – 23 August	1	1 (100%)	0 (0%)	(0%)
24 August – 30 August	1	0 (0%)	0 (0%)	(0%)
31 August – 6 September	0	-	-	-
7 September – 13 September	5	5 (100%)	1 (20%)	(20%)
14 September – 20 September	0	-	-	-
21 September – 27 September	0	-	-	-
28 September – 4 October	2	2 (100%)	0 (0%)	(0%)
5 October – 11 October	2	2 (100%)	0 (0%)	(0%)
12 October – 18 October	4	4 (100%)	0 (0%)	(0%)
19 October – 25 October	4	4 (100%)	1 (25%)	(25%)
26 October – 1 November	0	-	-	-
2 November – 8 November	1	1 (100%)	0 (0%)	(0%)
9 November – 15 November	1	1 (100%)	1 (100%)	(100%)
Total	21	20 (95%)	3 (15%)	(14%)

Table 4C DCD liver offers decline rates for livers transplanted, by centre and week, 17 August to 15 November 2021

	No. of offers	No. of offers declined (%)	Offers declined due to logistical reasons	
			N (% declined)	(% of all offers)
Newcastle				
17 August – 23 August	1	1 (100%)	0 (0%)	(0%)
24 August – 30 August	1	0 (0%)	0 (0%)	(0%)
31 August – 6 September	1	1 (100%)	0 (0%)	(0%)
7 September – 13 September	0	-	-	-
14 September – 20 September	3	3 (100%)	0 (0%)	(0%)
21 September – 27 September	2	2 (100%)	0 (0%)	(0%)
28 September – 4 October	4	2 (50%)	0 (0%)	(0%)
5 October – 11 October	1	1 (100%)	0 (0%)	(0%)
12 October – 18 October	1	1 (100%)	0 (0%)	(0%)
19 October – 25 October	1	1 (100%)	0 (0%)	(0%)
26 October – 1 November	0	-	-	-
2 November – 8 November	1	1 (100%)	0 (0%)	(0%)
9 November – 15 November	1	1 (100%)	0 (0%)	(0%)
Total	17	14 (82%)	0 (0%)	(0%)
Leeds				
17 August – 23 August	1	1 (100%)	0 (0%)	(0%)
24 August – 30 August	0	-	-	-
31 August – 6 September	0	-	-	-
7 September – 13 September	0	-	-	-
14 September – 20 September	3	3 (100%)	0 (0%)	(0%)
21 September – 27 September	2	2 (100%)	0 (0%)	(0%)
28 September – 4 October	4	3 (75%)	0 (0%)	(0%)
5 October – 11 October	1	1 (100%)	0 (0%)	(0%)
12 October – 18 October	1	1 (100%)	0 (0%)	(0%)
19 October – 25 October	1	1 (100%)	0 (0%)	(0%)
26 October – 1 November	1	0 (0%)	0 (0%)	(0%)
2 November – 8 November	1	1 (100%)	0 (0%)	(0%)
9 November – 15 November	1	1 (100%)	0 (0%)	(0%)
Total	16	14 (88%)	0 (0%)	(0%)
Cambridge				
17 August – 23 August	1	1 (100%)	0 (0%)	(0%)
24 August – 30 August	0	-	-	-
31 August – 6 September	1	0 (0%)	0 (0%)	(0%)
7 September – 13 September	0	-	-	-
14 September – 20 September	2	1 (50%)	0 (%)	(0%)
21 September – 27 September	1	1 (100%)	0 (0%)	(0%)
28 September – 4 October	5	3 (60%)	2 (67%)	(40%)
5 October – 11 October	2	1 (50%)	0 (0%)	(0%)
12 October – 18 October	1	1 (100%)	0 (0%)	(0%)
19 October – 25 October	2	1 (50%)	1 (100%)	(50%)
26 October – 1 November	1	0 (0%)	0 (0%)	(0%)
2 November – 8 November	1	0 (0%)	0 (0%)	(0%)
9 November – 15 November	4	2 (50%)	1 (50%)	(25%)
Total	21	11 (52%)	4 (36%)	(19%)
Royal Free				
17 August – 23 August	1	1 (100%)	0 (0%)	(0%)
24 August – 30 August	0	-	-	-
31 August – 6 September	0	-	-	-
7 September – 13 September	0	-	-	-
14 September – 20 September	4	3 (75%)	0 (0%)	(0%)

21 September – 27 September	2	2 (100%)	0 (0%)	(0%)
28 September – 4 October	3	3 (100%)	2 (67%)	(67%)
5 October – 11 October	4	2 (50%)	0 (0%)	(0%)
12 October – 18 October	1	1 (100%)	0 (0%)	(0%)
19 October – 25 October	2	1 (50%)	0 (0%)	(0%)
26 October – 1 November	0	-	-	-
2 November – 8 November	1	1 (100%)	0 (0%)	(0%)
9 November – 15 November	1	1 (100%)	0 (0%)	(0%)
Total	19	15 (79%)	2 (13%)	(11%)
Kings College				
17 August – 23 August	2	1 (50%)	0 (0%)	(0%)
24 August – 30 August	1	0 (0%)	0 (0%)	(0%)
31 August – 6 September	2	1 (50%)	1 (100%)	(50%)
7 September – 13 September	0	-	-	-
14 September – 20 September	5	4 (80%)	1 (25%)	(20%)
21 September – 27 September	4	2 (50%)	1 (50%)	(25%)
28 September – 4 October	3	2 (67%)	0 (0%)	(0%)
5 October – 11 October	2	0 (0%)	0 (0%)	(0%)
12 October – 18 October	1	1 (100%)	0 (0%)	(0%)
19 October – 25 October	3	1 (33%)	1 (100%)	(33%)
26 October – 1 November	1	0 (0%)	0 (0%)	(0%)
2 November – 8 November	1	1 (100%)	0 (0%)	(0%)
9 November – 15 November	1	0 (0%)	0 (0%)	(0%)
Total	26	13 (50%)	4 (31%)	(15%)
Birmingham				
17 August – 23 August	1	0 (0%)	0 (0%)	(0%)
24 August – 30 August	0	-	-	-
31 August – 6 September	1	1 (100%)	1 (100%)	(100%)
7 September – 13 September	0	-	-	-
14 September – 20 September	3	2 (67%)	2 (100%)	(67%)
21 September – 27 September	2	0 (0%)	0 (0%)	(0%)
28 September – 4 October	3	3 (100%)	2 (67%)	(67%)
5 October – 11 October	1	1 (100%)	1 (100%)	(100%)
12 October – 18 October	1	0 (0%)	0 (0%)	(0%)
19 October – 25 October	1	1 (100%)	0 (0%)	(0%)
26 October – 1 November	1	1 (100%)	1 (100%)	(100%)
2 November – 8 November	2	2 (100%)	1 (50%)	(50%)
9 November – 15 November	2	1 (50%)	0 (0%)	(0%)
Total	18	12 (67%)	8 (67%)	(44%)
Edinburgh				
17 August – 23 August	1	1 (100%)	0 (0%)	(0%)
24 August – 30 August	0	-	-	-
31 August – 6 September	2	1 (50%)	0 (0%)	(0%)
7 September – 13 September	0	-	-	-
14 September – 20 September	4	3 (75%)	1 (33%)	(25%)
21 September – 27 September	3	2 (67%)	0 (0%)	(0%)
28 September – 4 October	3	3 (100%)	0 (0%)	(0%)
5 October – 11 October	1	1 (100%)	0 (0%)	(0%)
12 October – 18 October	1	1 (100%)	0 (0%)	(0%)
19 October – 25 October	1	1 (100%)	0 (0%)	(0%)
26 October – 1 November	0	-	-	-
2 November – 8 November	1	1 (100%)	0 (0%)	(0%)
9 November – 15 November	1	1 (100%)	0 (0%)	(0%)
Total	18	15 (83%)	1 (7%)	(6%)

Table 4D Reasons liver offers were declined due to logistics for livers transplanted, by centre and week, 17 August to 15 November 2021

Week	Centre	Centre already retrieving/transplanting	No beds/staff/theatre	Total
DBD named patient				
17 – 23 August	Leeds	1	0	1
	Birmingham	0	2	2
24 – 30 August	Birmingham	1	6	7
31 – 6 September	Birmingham	0	5	5
7 – 13 September	Leeds	3	0	3
	Cambridge	2	0	2
	Royal Free	1	0	1
	Birmingham	0	3	3
14 – 20 September	Kings	1	0	1
21 – 27 September	Birmingham	0	1	1
28 – 4 October	Leeds	0	1	1
	Kings	0	1	1
	Birmingham	0	4	4
5 – 11 October	Leeds	0	1	1
12 – 18 October	Leeds	0	1	1
	Birmingham	1	0	1
19 – 25 October	Birmingham	1	0	1
26 – 1 November	Royal Free	1	0	1
	Birmingham	0	1	1
2 – 8 November	Cambridge	0	3	3
9 – 15 November	Birmingham	0	2	2
DBD fast-track				
17 – 23 August	Leeds	1	0	1
	Birmingham	0	1	1
7 – 13 September	Leeds	0	2	2
	Cambridge	1	0	1
	Birmingham	1	0	1
12 – 18 October	Royal Free	1	0	1
	Kings	1	0	1
	Birmingham	0	1	1
19 – 25 October	Leeds	3	0	3
	Royal Free	1	0	1
	Kings	1	0	1
9 – 15 November	Edinburgh	1	0	1

DCD

31 – 6 September	Kings	1	0	1
	Birmingham	0	1	1
14 – 20 September	Birmingham	0	1	1
	Edinburgh	0	1	1
21 – 27 September	Kings	1	0	1
28 – 4 October	Cambridge	2	0	2
	Royal Free	2	0	2
	Birmingham	0	2	2
5 – 11 October	Birmingham	0	1	1
19 – 25 October	Cambridge	1	0	1
	Kings	1	0	1
26 – 1 November	Birmingham	0	1	1
2 – 8 November	Birmingham	0	1	1
9 – 15 November	Cambridge	0	1	1

DCD Offering

Table 5 Summary of fast-track offering for DCD livers between 3 November 2020 and 15 November 2021							
	Number of offers	Number of livers fast-tracked		Number of fast-track offers after x-clamp		Number of fast-track offers resulted in transplant	
	N	N	%	N	% of fast-tracked	N	% of fast-tracked
3 November – 30 November 2020	52	37	71	1	3	4	11
1 December – 28 December 2020	53	34	64	1	3	2	6
29 December – 25 January 2021	46	43	93	2	5	2	5
26 January – 22 February 2021	27	20	74	2	10	1	5
23 February – 22 March 2021	53	36	68	7	19	3	8
23 March – 19 April 2021	52	47	90	8	17	6	13
20 April – 17 May 2021	67	48	72	4	8	7	15
18 May – 14 June 2021	77	54	70	7	13	7	13
15 June – 12 July 2021	67	42	63	7	17	5	12
13 July – 9 August 2021	56	43	77	8	19	2	5
10 August – 6 September 2021	57	43	75	3	7	2	5
7 September – 4 October 2021	66	47	71	7	15	7	15
5 October – 1 November 2021	59	38	64	4	11	3	8
2 November – 15 November 2021	36	28	78	5	19	2	7
Total	768	560	73	66	12	53	9

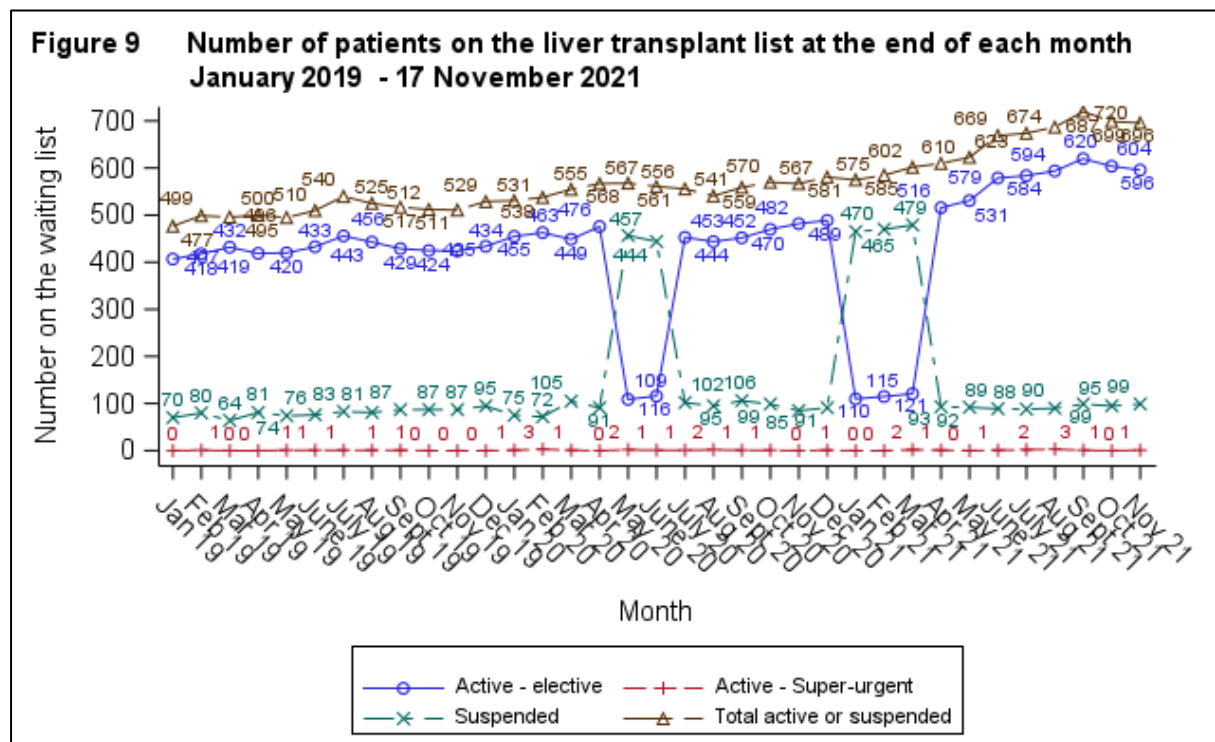
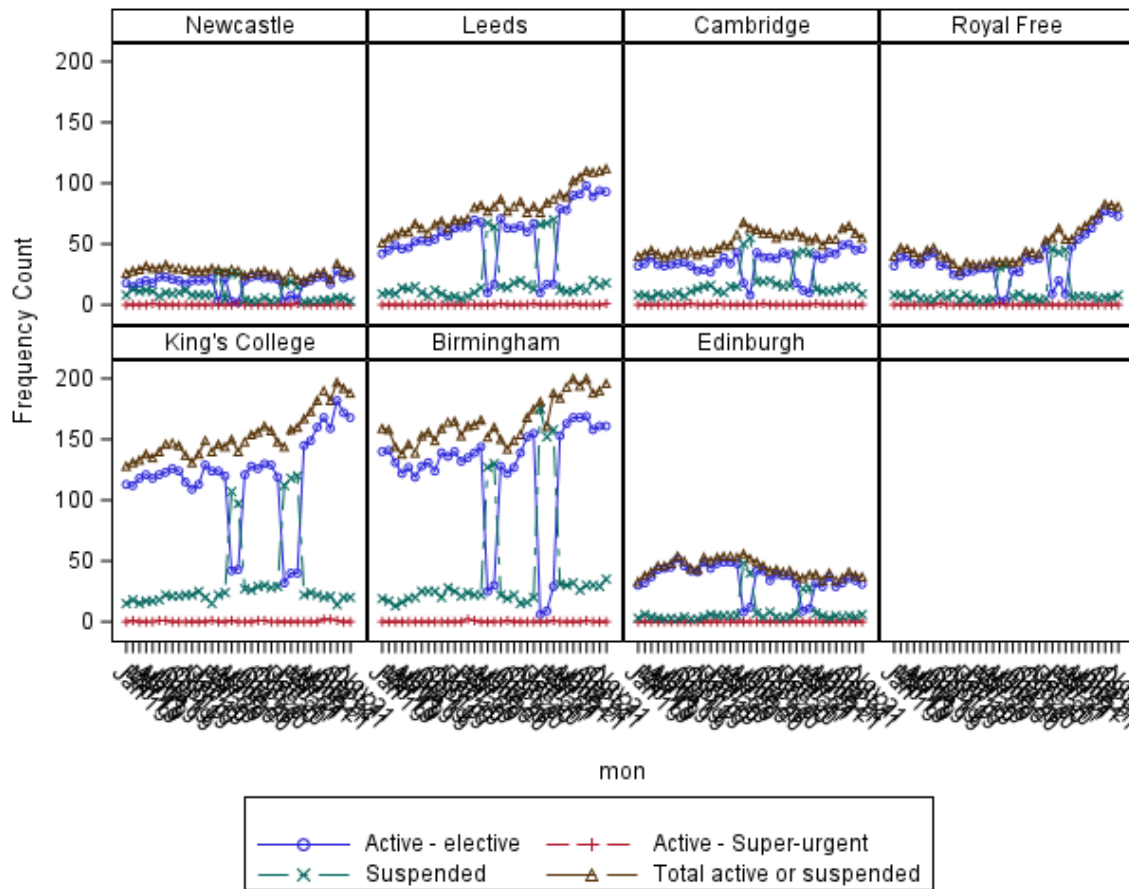


Figure 10 Number of patients on the liver transplant list at the end of each month, by centre, January 2019 - 17 November 2021



596 patients active on the UK elective liver list on 17 November 2021:

- 563 adult
- 33 paediatric

One paediatric blood group A patient currently active on the super-urgent list at Leeds

Additional 16 patients currently active on intestinal list and 7 suspended

- 10 also require a liver (9 active and 1 suspended)

Figure 11 Total number of adult patients on the elective UK liver transplant list on 17 November 2021, by registration status

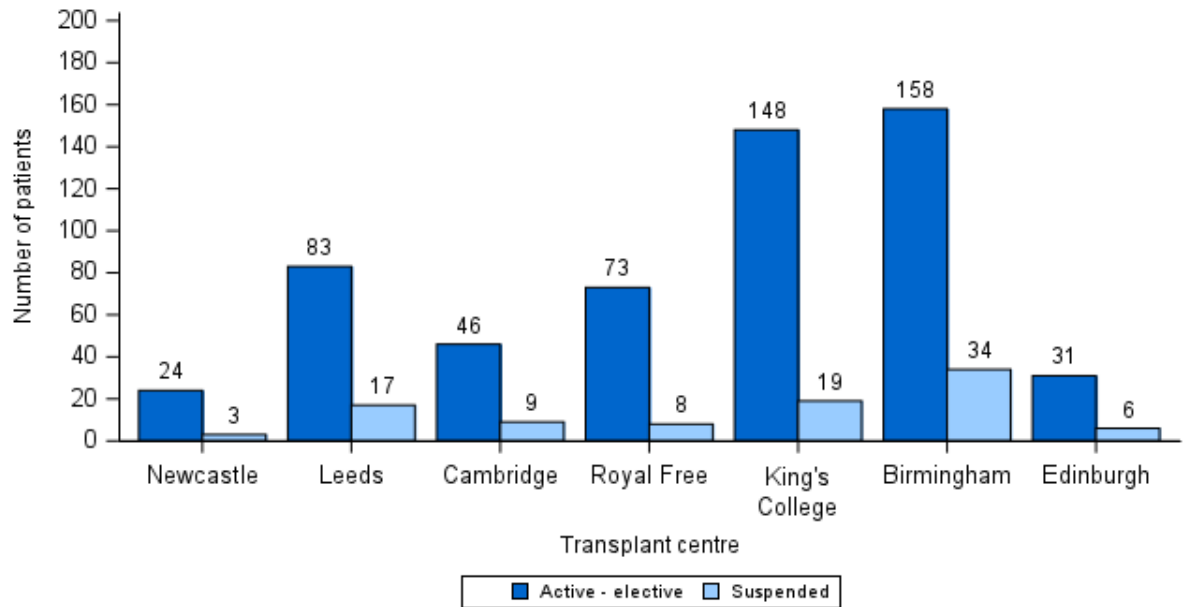


Figure 12 Total number of paediatric patients on the elective UK liver transplant list on 17 November 2021, by registration status

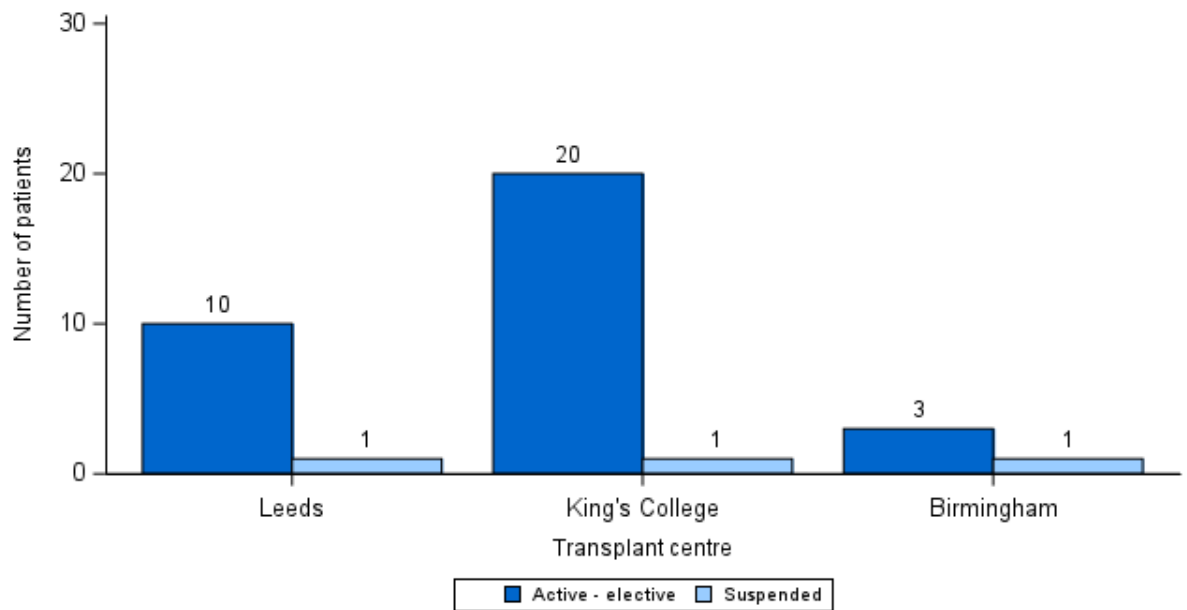


Figure 13 Number of new registrations onto the UK liver transplant list, by urgency status, 1 January 2019 to 17 November 2021

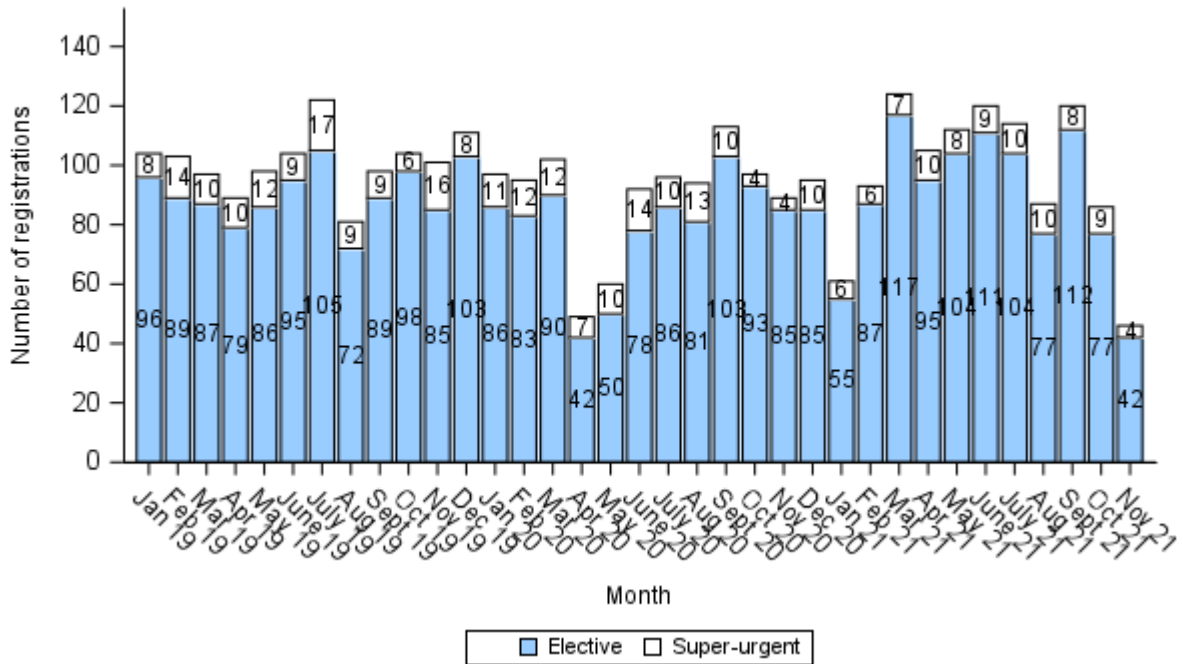


Figure 13A Number of new registrations onto the UK liver transplant list, by transplant centre and urgency status, 1 January 2019 to 17 November 2021

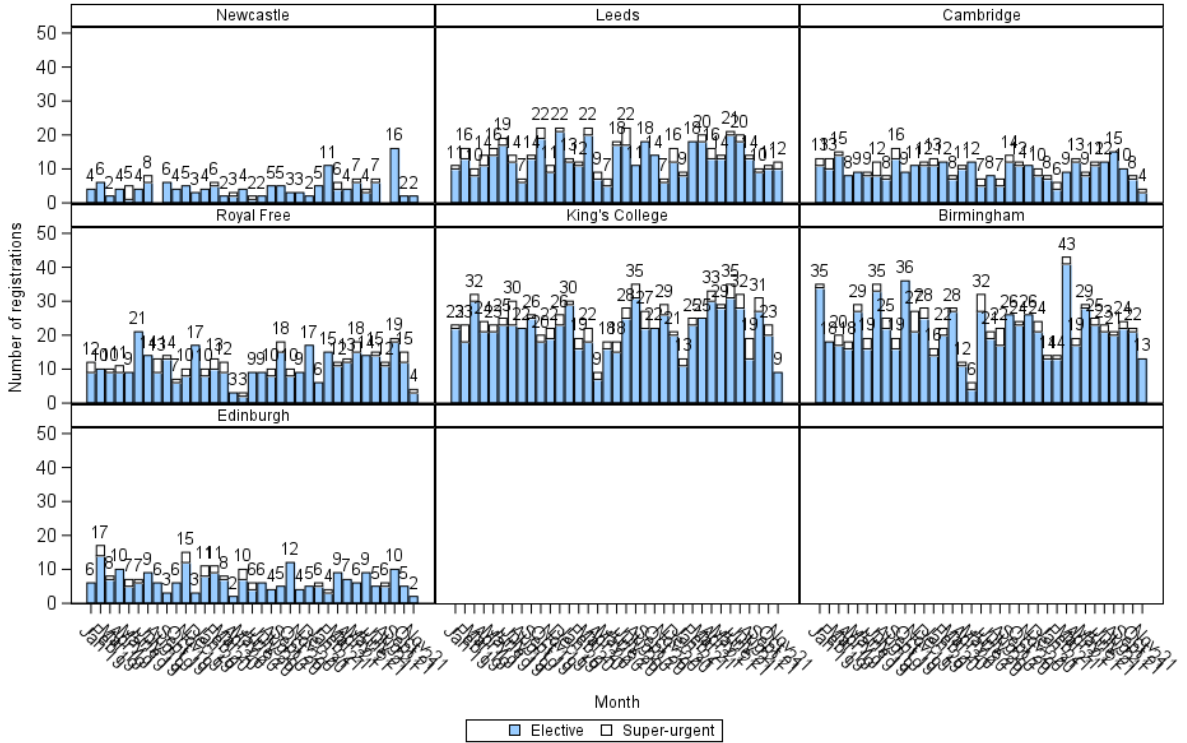


Figure 14 Number of registrations, deaths and removals by month since 1 January 2019

