

NHS BLOOD AND TRANSPLANT

MULTI-VISCERAL AND COMPOSITE TISSUE ADVISORY GROUP

SUMMARY FROM STATISTICS AND CLINICAL RESEARCH

INTRODUCTION

- 1 This paper provides an update from Statistics and Clinical Research and summarises current and future work in the area of multi-visceral and composite tissue transplantation.

UPDATE FROM STATISTICS AND CLINICAL RESEARCH

- 2 New and updated reports, all Advisory Group papers and conference presentations continue to be posted on the OTDT Clinical Site www.odt.nhs.uk.
- 3 Please note our current arrangements for staff responsibilities in support of organs and tissues.

Area	Lead	Contact
Head of Organ and Tissue Donation and Transplantation Studies	Lisa Mumford	lisa.mumford@nhsbt.nhs.uk
Organ donation	Susanna Madden	susanna.madden@nhsbt.nhs.uk
Organ retrieval	Rachel Hogg	rachel.hogg@nhsbt.nhs.uk
Ocular tissue	Cathy Hopkinson	cathy.hopkinson@nhsbt.nhs.uk
Organ utilisation	Susanna Madden	susanna.madden@nhsbt.nhs.uk
Enquiries		statistical.enquiries@nhsbt.nhs.uk
Kidney transplantation	Matthew Robb	matthew.robb@nhsbt.nhs.uk
Pancreas transplantation	Claire Counter	claire.counter@nhsbt.nhs.uk
Liver transplantation	Rhiannon Taylor	rhiannon.taylor@nhsbt.nhs.uk
Multi-visceral and Composite Tissue	Chloe Brown	chloe.brown@nhsbt.nhs.uk
Cardiothoracic transplantation	Sally Rushton	sally.rushton@nhsbt.nhs.uk

RECENT AND FUTURE WORK

- 4 In January 2022, a 'Group 2 combined liver/intestinal' tier was introduced towards the bottom of the adult and paediatric DBD donor Liver and Intestinal matching runs (**Figure 1** and **Figure 2**). This agreed change is in line with POL196 (Deceased Donor Liver Distribution and Allocation) and POL193 (Intestinal Transplantation: Organ Allocation) and was introduced to ensure a robust process whereby offers to intestinal Group 2 patients follow agreed policies every time.

A minor IT defect has been identified. Whilst this has not impacted on patients as there are currently no Group 2 patients on the list, centres are asked to:

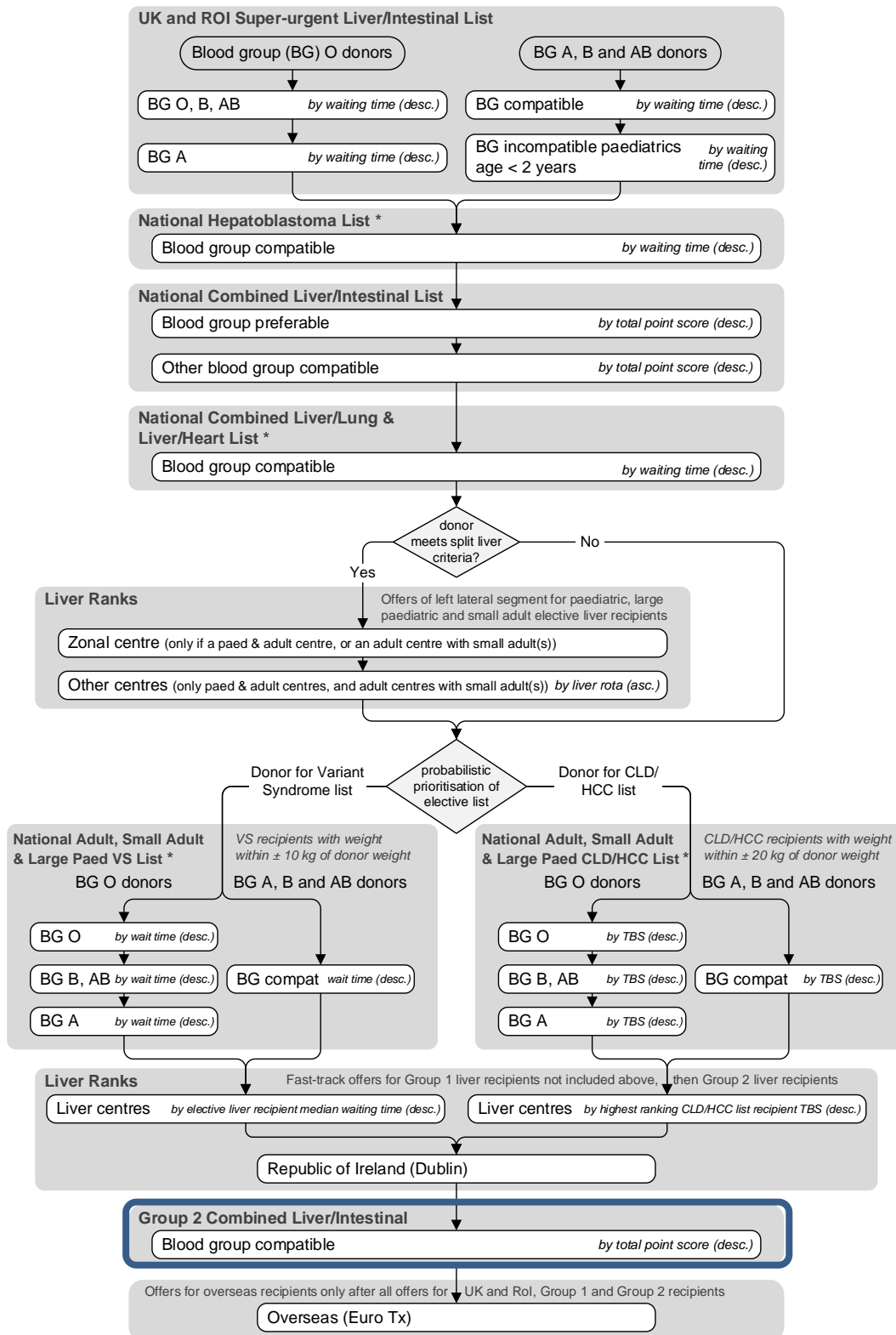
- Inform Hub Operations when they register a Group 2 patient for their awareness
- Inform Hub Operations of any interest they may have for a Group 2 recipient for a donor during offering

5 Work has continued on developing an interim solution for collecting more extensive intestinal data. Additionally, initial discussions on the potential to add currently collected intestinal data to the International Registry are due to take place in the near future.

Chloe Brown
Statistics and Clinical Research

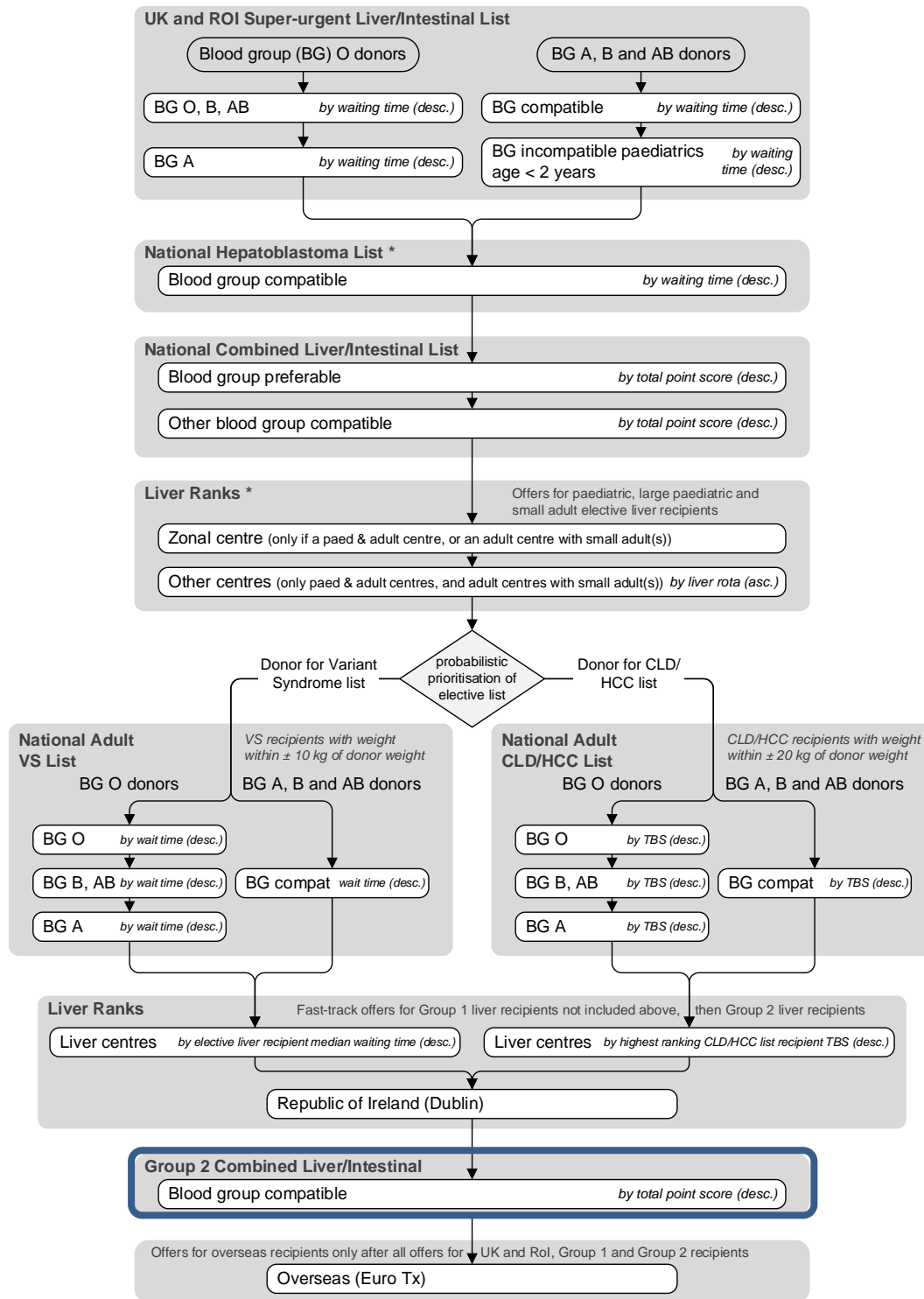
February 2022

Figure 1. Adult DBD donor Liver and Intestinal matching run



* requirement to split if donor meets split liver criteria

Figure 2. Paediatric DBD donor Liver and Intestinal matching run



* requirement to split if donor meets split liver criteria