



Blood and Transplant

Recipient and Living Donor Coordinator Induction 2022

Facilitated by

Laura Stamp (Lead Nurse Recipient Coordinator, NHSBT)

Lisa Burnapp (Associate Medical Director, NHSBT)

Jen Lumsdaine (Living Donation Scotland)

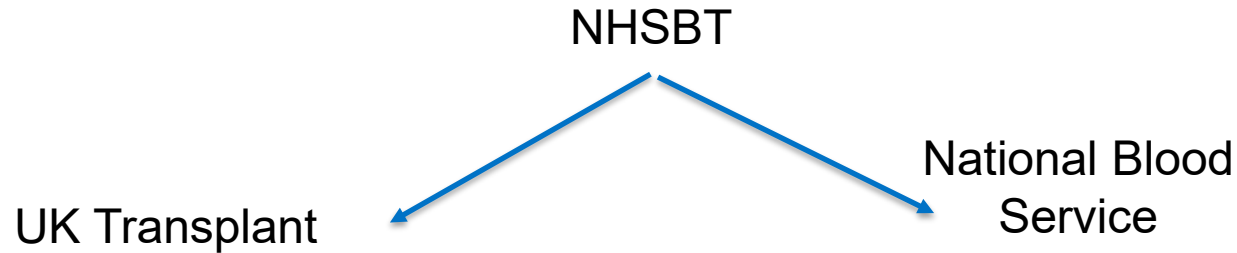
Caring Expert Quality

NHSBT, the Organisation

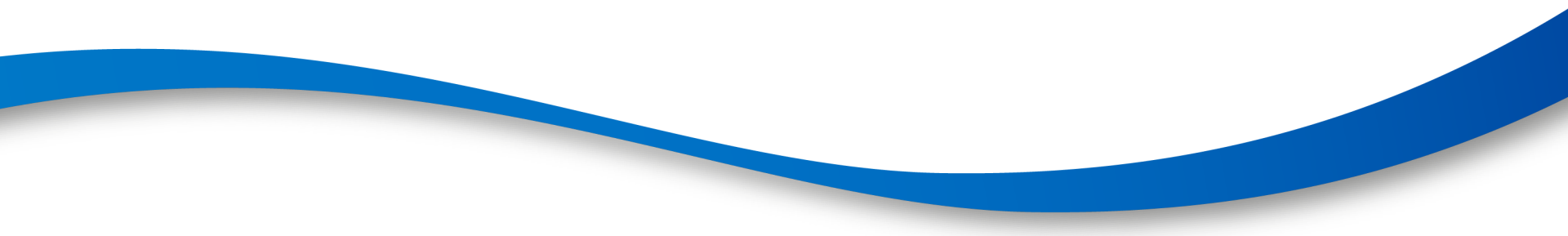
Who, What, Why?



Historically



The Organ Donation Taskforce made 14 recommendations in their first report *Organs for Transplants* published in January 2008.



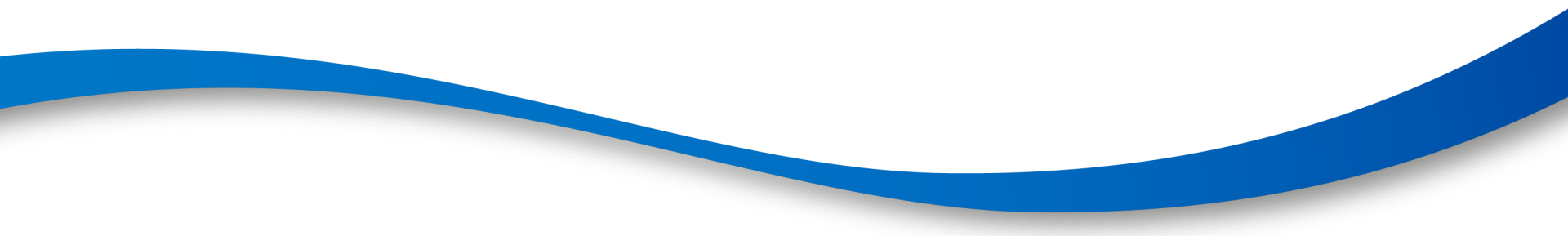


3 key areas

1. Donor identification and referral

2. Donor co-ordination

3. Organ retrieval





Blood and Transplant

**Who we are
today**

Employment of SNs

Donor characterisation

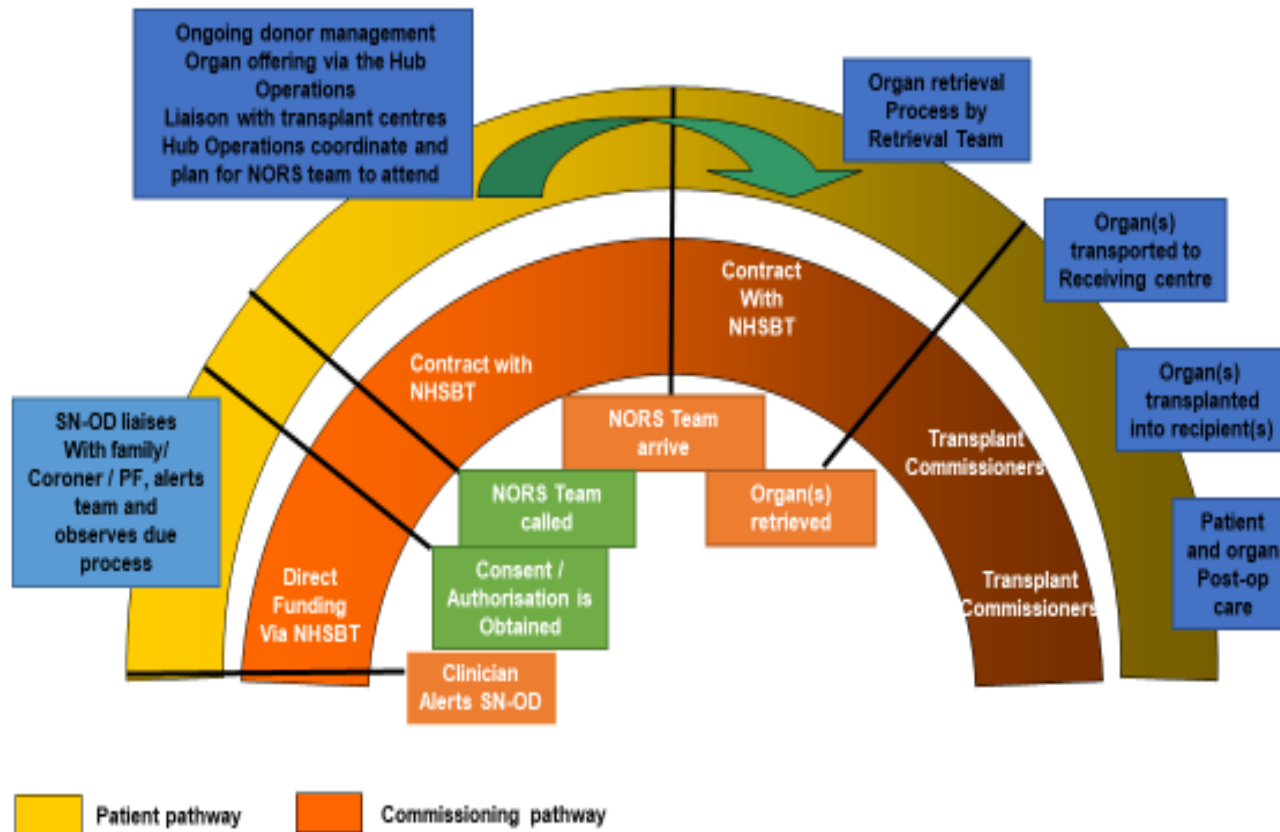
Organ procurement

Organ offering and allocation schemes

Transplant Registry

Caring, Expert, Quality

Generic Patient Pathway – Organ Donation After Cardiac Death (DCD) or Brain Death (DBD)





Organ and Tissue Donation and Transplantation (OTDT) Directorate





Home / ODT structure & standards / Clinical leadership

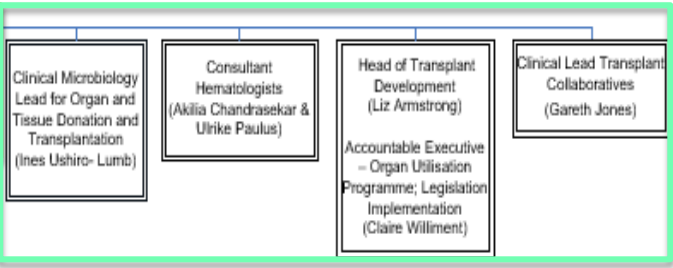
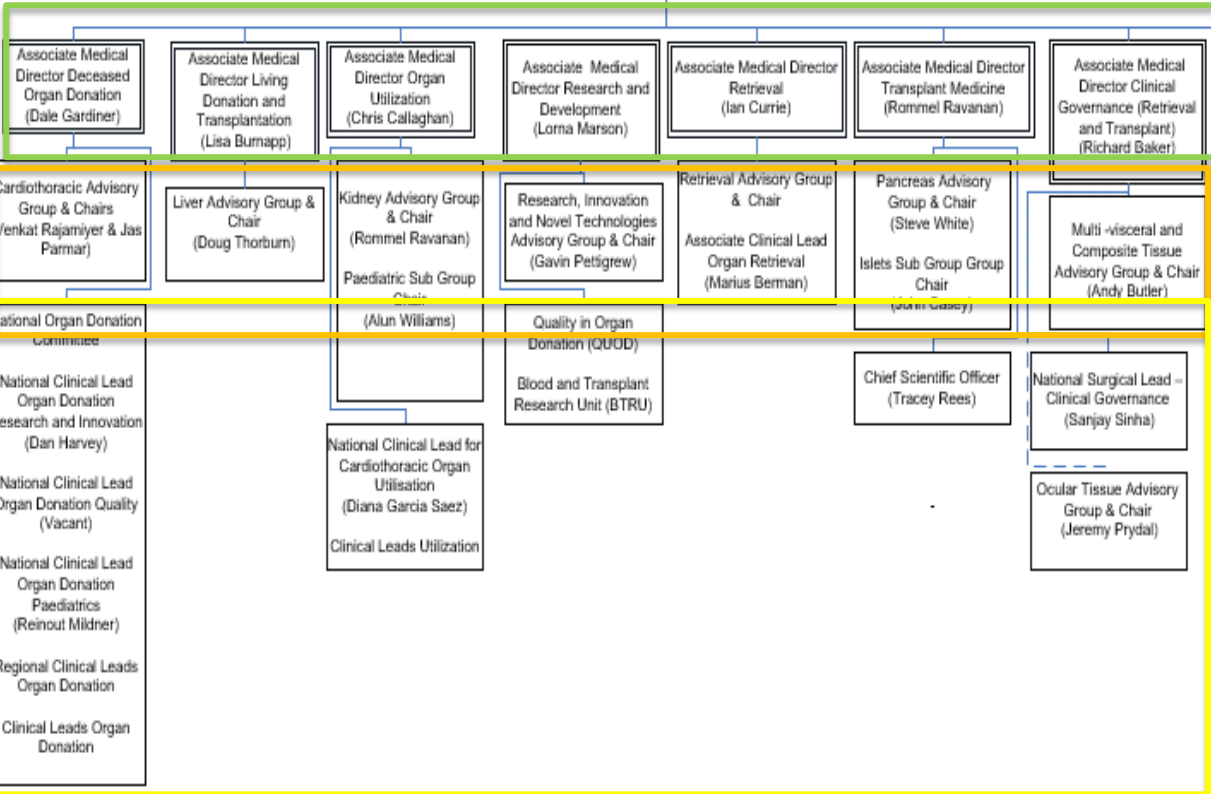
Clinical leadership

Meeting papers and minutes from key ODT management groups

<https://www.odt.nhs.uk/odt-structures-and-standards/clinical-leadership/>

OTDT Clinical Team

OTDT Medical Director
(Derek Manas)



OTDT Director (Anthony Clarkson)

4 Assistant Directors

- UK Commissioning & Service Development (Karen Quinn)
- Strategy, Transformation & Business Development (Ben Hume)
- Organ Donation (John Richardson)
- Chief Nurse (Olive McGowan)

Organ and Tissue Advisory Groups

- Heart and Lung (C-CTAG) and (L-CTAG)
- Liver (LAG)
- Pancreas (PAG)
- Kidney (KAG) and Paediatric KAG (KPAG)
- Bowel (BAG)
- Multi-visceral and Composite Tissue (MCTAG)
- Research, Innovation and Technology (RINTAG)
- Retrieval (RAG)
- Ocular (OTAG)
- Multi-disciplinary professionals and lay representatives
- Patient Advisory Groups



What do they do?

- Work with NHSBT to establish policies (e.g.) for organ offering, performance monitoring, best practice
- Discuss and advise on organ/tissue specific issues
- Consider how changes in practice will impact on patients and existing policies
- Consider organ/tissue specific decision-making in the context of other organ/tissue groups and possible impact on patients
- Determine the rules governing an organ/tissue specific group



50TH ANNIVERSARY
The Voice of Transplantation for Fifty Years

Representing all
professionals involved
in transplantation
in the UK



Learn More



<https://bts.org.uk/>



Chapter of Nurses

Overview

The British Transplantation Society Nurse and Allied Health Care Professional Chapter is a supportive network for all Nurses and Allied Health Care Professionals (AHPs) working within organ donation and transplantation.

Its aim is to encourage collaborative and inclusive working, the sharing of best evidence based practice, sharing of research and education and to celebrate innovation in transplantation in particular highlighting innovation which is led by Transplant based Nurses and AHPs.

<https://bts.org.uk/chapters-committees/chapter-of-nurses/>