

Objective

During the Organ Retrieval Process there are occasions when suspicious lesions are identified that require histopathology assessment. This is not a service provided or commissioned by NHSBT and the destination of samples can vary significantly.

This process provides guidance for all those involved in the histopathology assessment of samples that may affect the safety of an organ, including SNODs, NORS teams, histopathologists, Biomedical Scientists, Hub Operations staff, and Transplant centres

Changes in this version

Update to flowcharts to align with **SOP4938** Sharing Clinical Information.

Change to SN (Specialist Nurse) to align with all other documents within Quality Management System.

Alerted flowchart colours to align with all other documents within Quality Management System.

Roles

- **National Organ Retrieval Team (NORS) –** Identify any lesion that may require histopathology assessment, gain advice where required and inform the SNOD as soon as lesion identified. To complete all relevant clinical information on National Request Form (**FRM5867**)
- **Specialist Nurse – (SN)** To facilitate the organisation of samples to be sent for histopathology assessment as agreed by the NORS surgeon and complete demographics on the National Histopathology Request Form (**FRM5867**). To communicate, report and document any findings requiring additional action that is identified during the organ donation process to Hub Operations. The SN is responsible for ensuring the provisional and final histopathology results are ascertained. SN to follow **SOP4938** for sharing of new clinical information.
- **Histopathology Laboratory –** Notify SN/Hub Operations of any findings or results following histopathology assessment.
- **Hub Operations (HO) –** To follow **SOP4938** for sharing of new clinical information.
- **Transplant Centres –** To notify Hub Operations if there is any change in agreed process for assessment. To notify Hub Operations immediately if any new suspicious lesions are identified at organ assessment at the Recipient Centre as per **SOP5735**.
- **Donor Family Care Service (DFCS) –** To forward all histopathology findings to the SN as soon as they are received from Hub Operations. N.B. the **DFCS** is not a 24/7 service.

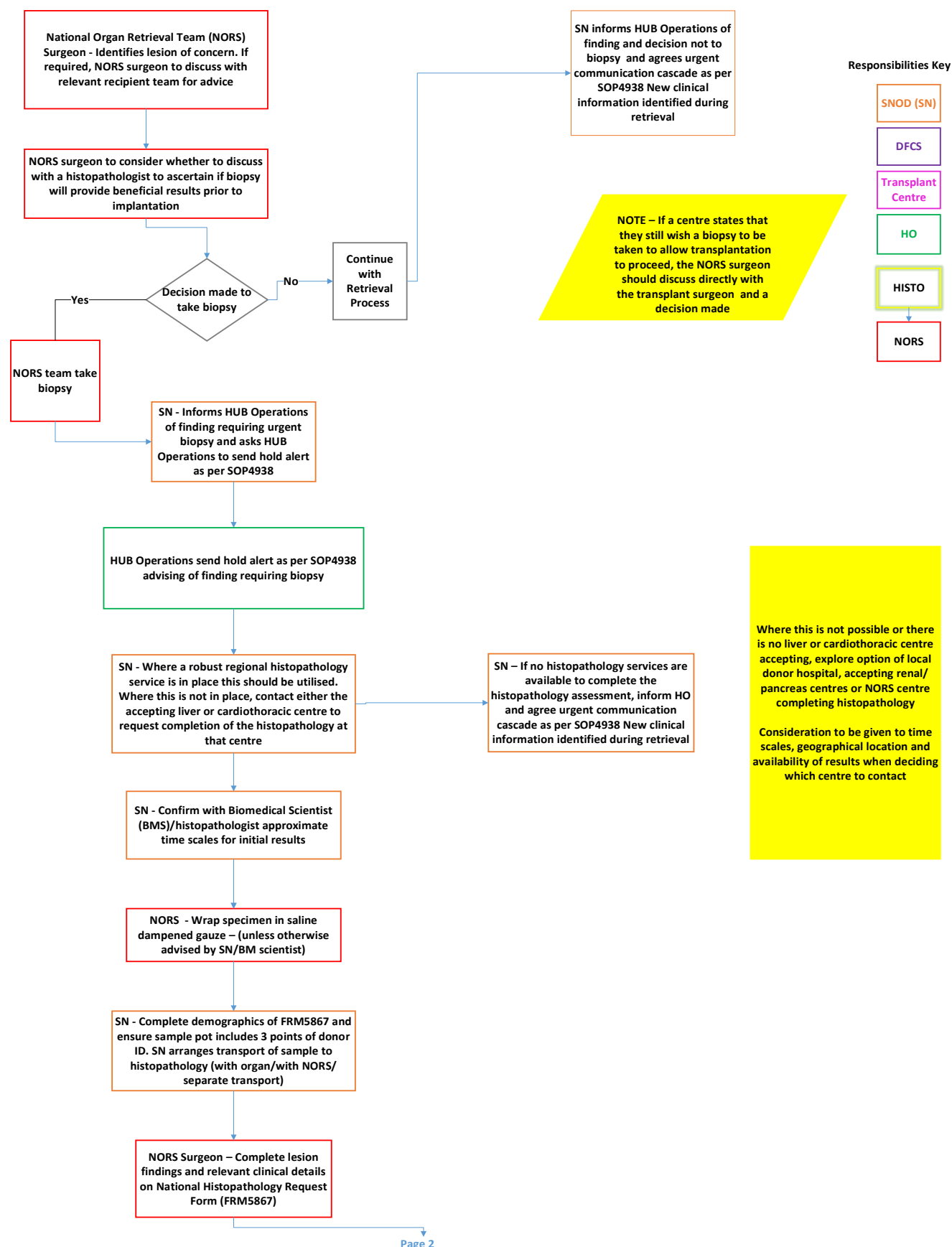
SOP5352/4 – Findings During Retrieval Requiring Histopathology Assessment



Blood and Transplant

Copy No:

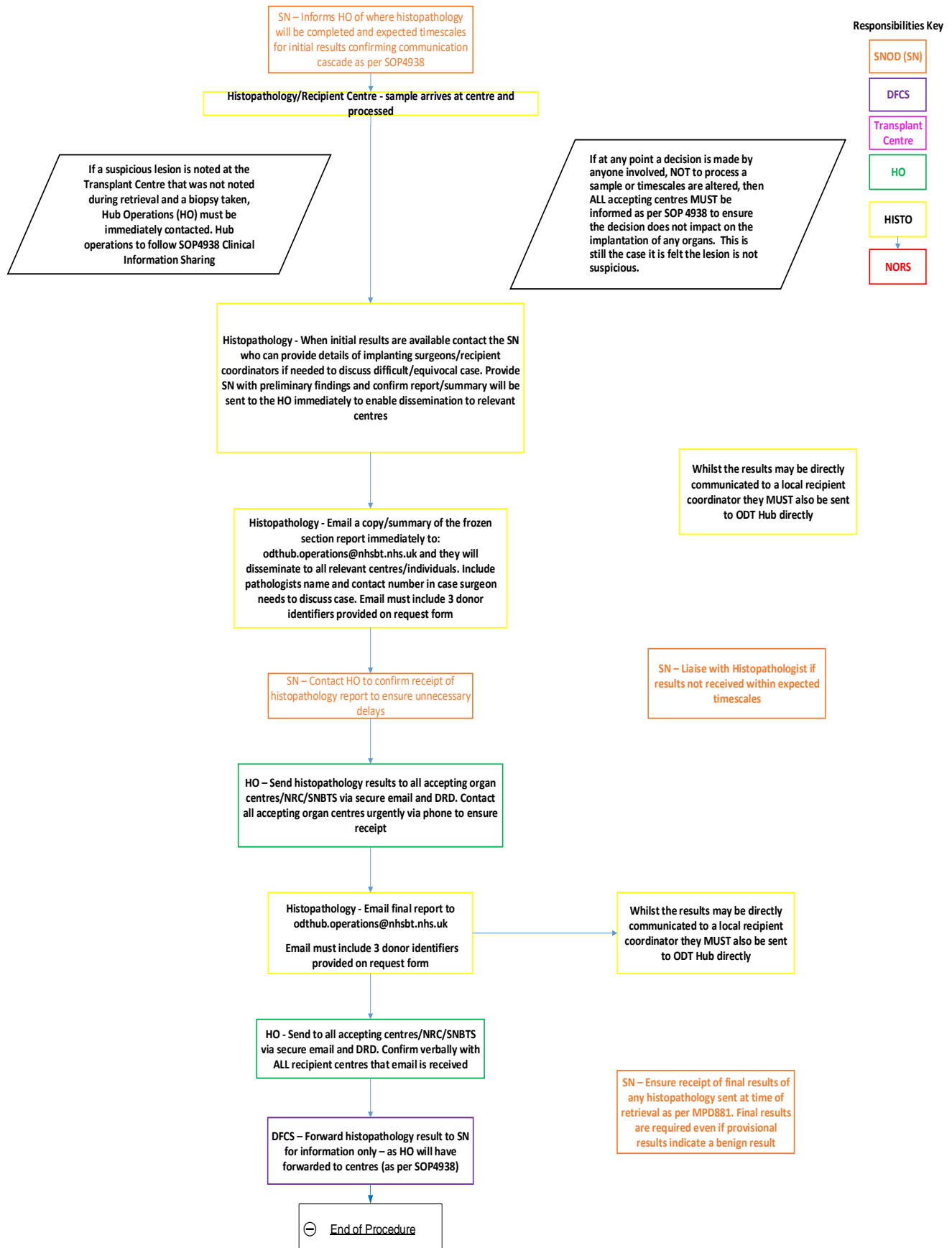
Effective date: 16/08/2021



SOP5352/4 – Findings During Retrieval Requiring Histopathology Assessment



Blood and Transplant
Copy No:
Effective date: 16/08/2021



SOP5352/4 – Findings During Retrieval Requiring Histopathology Assessment



Blood and Transplant

Copy No:

Effective date: 16/08/2021

Definitions

- None

Related Documents / References

- **FRM5867** – National Histopathology Request Form
- **MPD881** – Findings Requiring Additional Action
- **SOP4938** – Clinical Information Sharing
- **SOP5735** – Findings at a Transplant Centre Requiring Histopathology