

**Length of the deceased organ donation and
transplantation process**

Six-monthly report

1 April 2012 - 30 September 2021

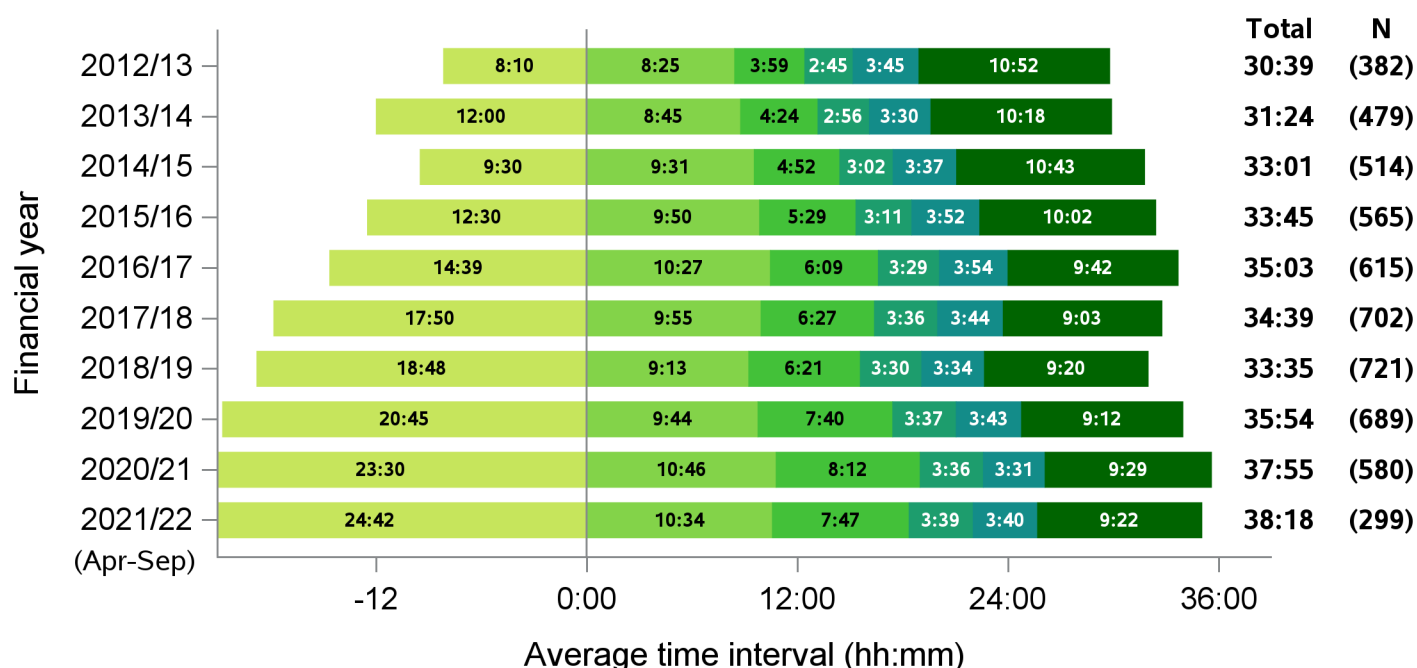
Produced 10 January 2022

Statistics and Clinical Studies



Summary of UK activity

Figure 1 - Median times of DBD organ donation process, UK, 1 April 2012 - 30 September 2021



Median time from:

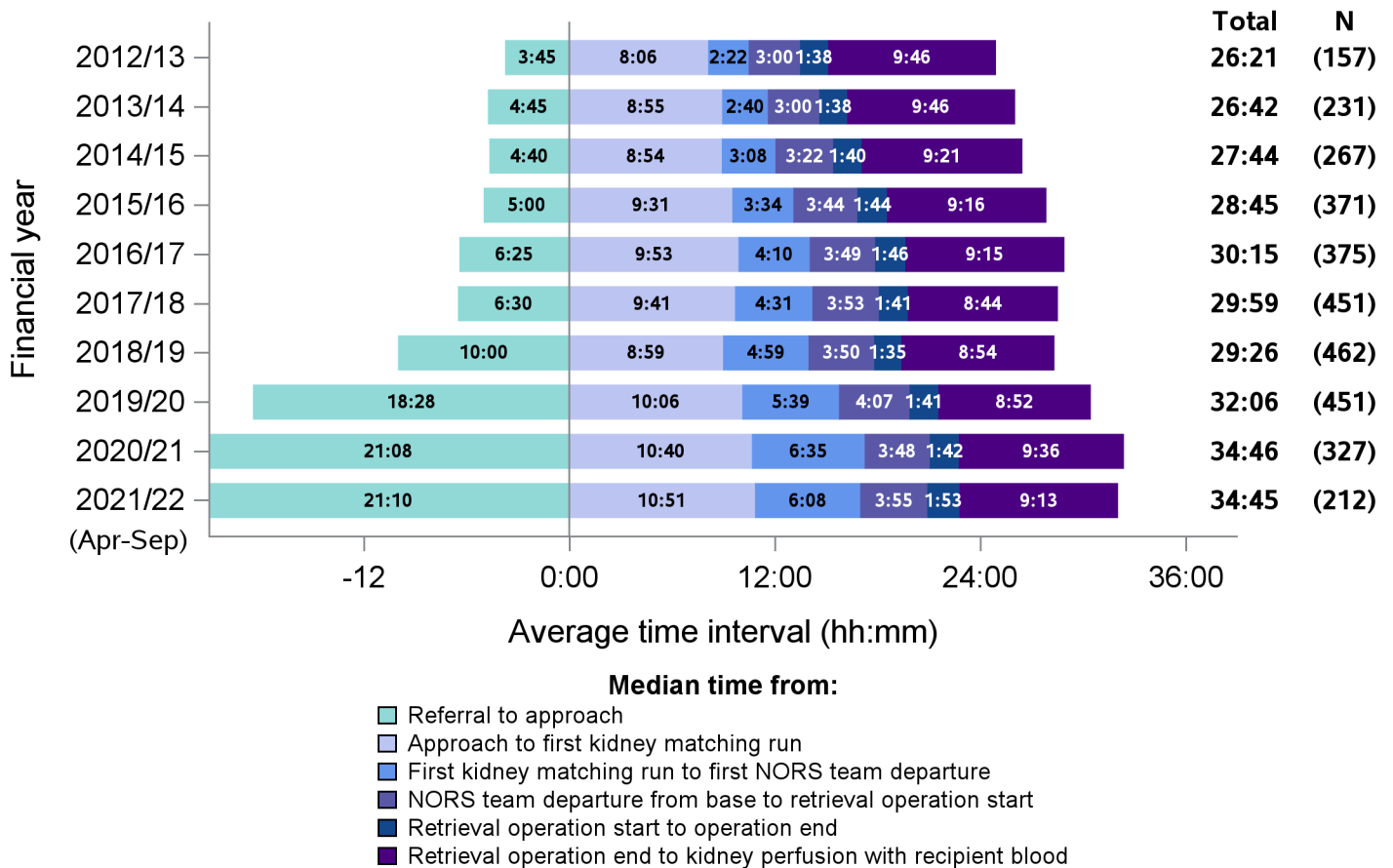
- Referral to approach
- Approach to first kidney matching run
- First kidney matching run to first NORS team departure
- NORS team departure from base to retrieval operation start
- Retrieval operation start to operation end
- Retrieval operation end to kidney perfusion with recipient blood

Time segment	Group with oversight responsibility
Referral to approach	National Organ Donation Committee
Approach to first kidney matching run	National Organ Donation Committee
First kidney matching run to first NORS team departure	ODT Hub
NORS team departure from base to retrieval operation start	Retrieval Advisory Group
Retrieval operation start to operation end	Retrieval Advisory Group
Retrieval operation end to kidney perfusion with recipient blood	Retrieval Advisory Group

It is important to note when interpreting all timings charts:

- To aid interpretation of the process following approach, time from referral to formal approach is presented before 0. This period is also excluded from the total median calculation
- If both a cardiothoracic and abdominal NORS team attend a donor; the earliest departure time is selected, and similarly the earliest retrieval operation start time
- The latest operation end time is selected, to signify the end of all donor surgery
- N values do not correspond to the number of donors each year, this is the number of patients for which all time values were available
- Total medians do not equal the sum of all medians calculated
- All timings charts are presented on the same scale to allow for comparison

Figure 2 - Median times of DCD organ donation process, UK, 1 April 2012 - 30 September 2021



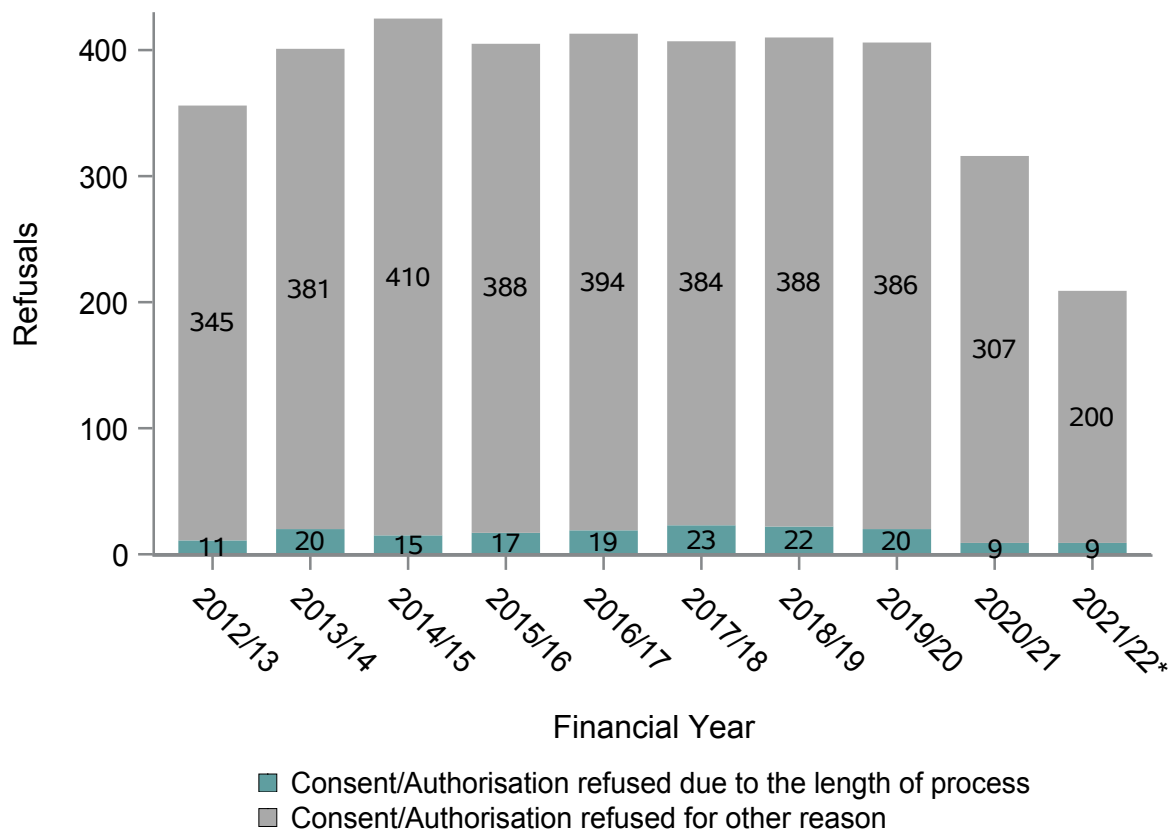
Time segment	Group with oversight responsibility
Referral to approach	National Organ Donation Committee
Approach to first kidney matching run	National Organ Donation Committee
First kidney matching run to first NORS team departure	ODT Hub
NORS team departure from base to retrieval operation start	Retrieval Advisory Group
Retrieval operation start to operation end	Retrieval Advisory Group
Retrieval operation end to kidney perfusion with recipient blood	Retrieval Advisory Group

Consent/authorisation not ascertained due to 'family felt the length of time for donation process was too long'

Table 1 Approaches and refusals in 2021/2022 (Apr-Sep)

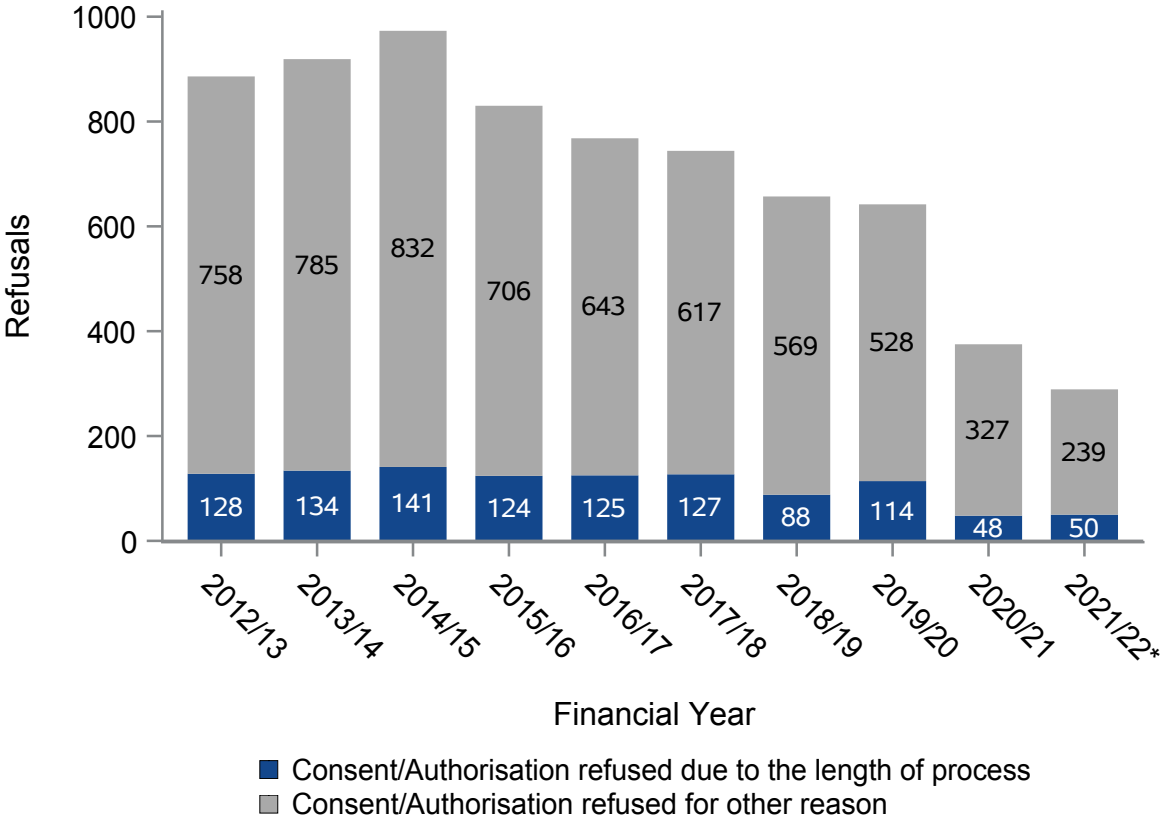
Team name	Eligible DBD Donors			Eligible DCD Donors		
	Organ donation discussions	Organ donation not supported	Not supported due to length of process	Organ donation discussions	Organ donation not supported	Not supported due to length of process
Eastern	101	19	0	145	50	6
London	178	84	1	102	47	9
Midlands	143	51	2	154	61	8
North West	143	29	1	128	41	3
Northern	77	23	1	59	18	3
Northern Ireland	49	9	2	27	7	2
Scotland	87	14	1	78	30	4
South Central	95	18	0	73	28	2
South East	124	28	1	83	25	2
South Wales	48	17	0	26	10	2
South West	87	12	0	64	20	3
Yorkshire	76	12	0	102	38	4

Figure 3 - Family refusals where organ donation discussion occurred, eligible DBD 1 April 2012 - 30 September 2021



*April-September only

**Figure 4 - Family refusals where organ donation discussion occurred, eligible DCD
1 April 2012 - 30 September 2021**



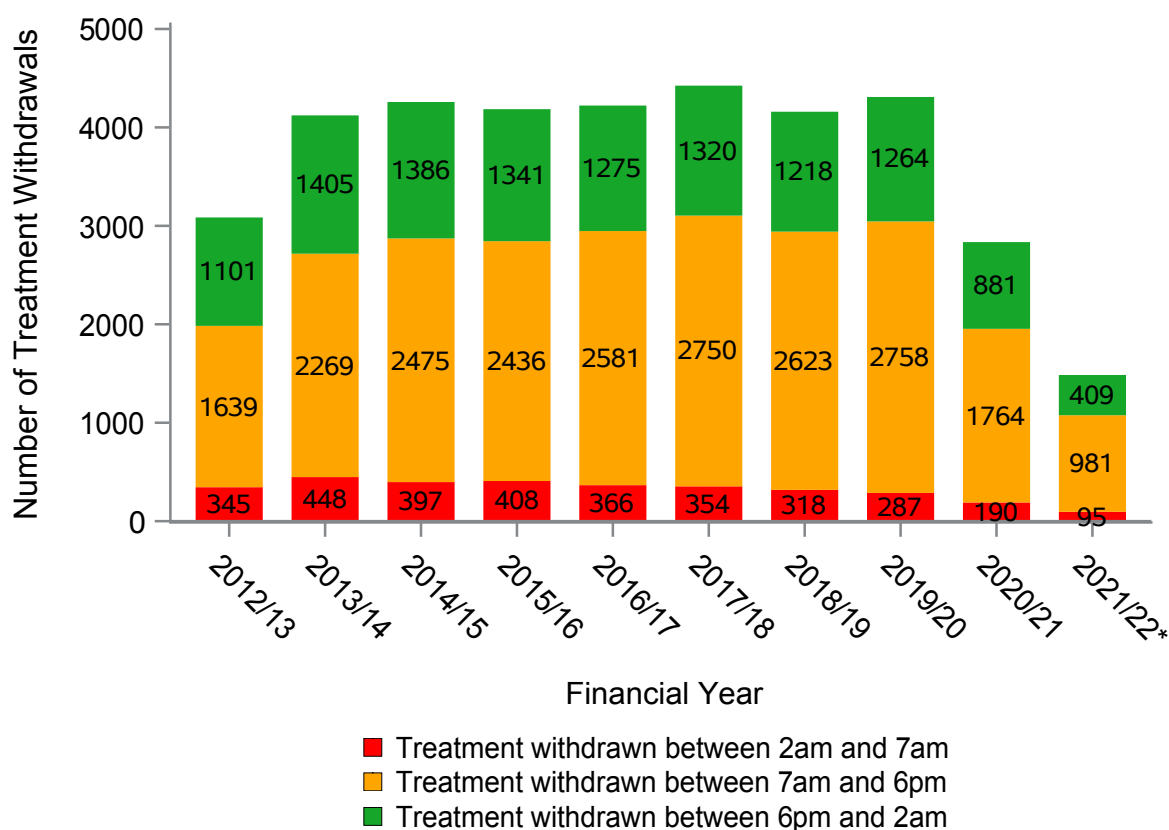
*April-September only

Withdrawal of life sustaining treatment (WLST)

Table 2 WLST timings 2021/2022 (Apr-Sep)

Team name	Treatment withdrawn	Treatment withdrawn between 2am and 7am	
		N	%
Eastern	415	23	6
London	245	15	6
Midlands	375	23	6
North West	469	28	6
Northern	199	11	6
Northern Ireland	63	3	5
Scotland	175	11	6
South Central	195	18	9
South East	198	21	11
South Wales	67	4	6
South West	147	11	7
Yorkshire	287	22	8

Figure 5 - Timings of WLST, 1 April 2012 - 30 September 2021

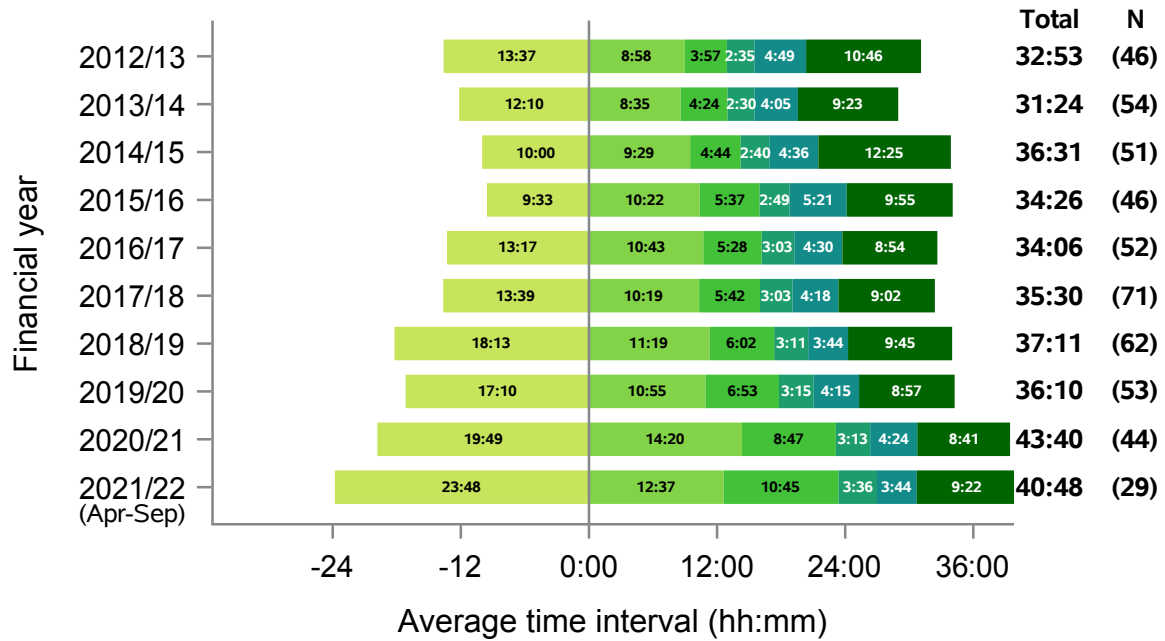


*April-September only

Data by Organ Donation Services Team

Eastern

Figure 6 - Median times of DBD organ donation process, Eastern, 1 April 2012 - 30 September 2021

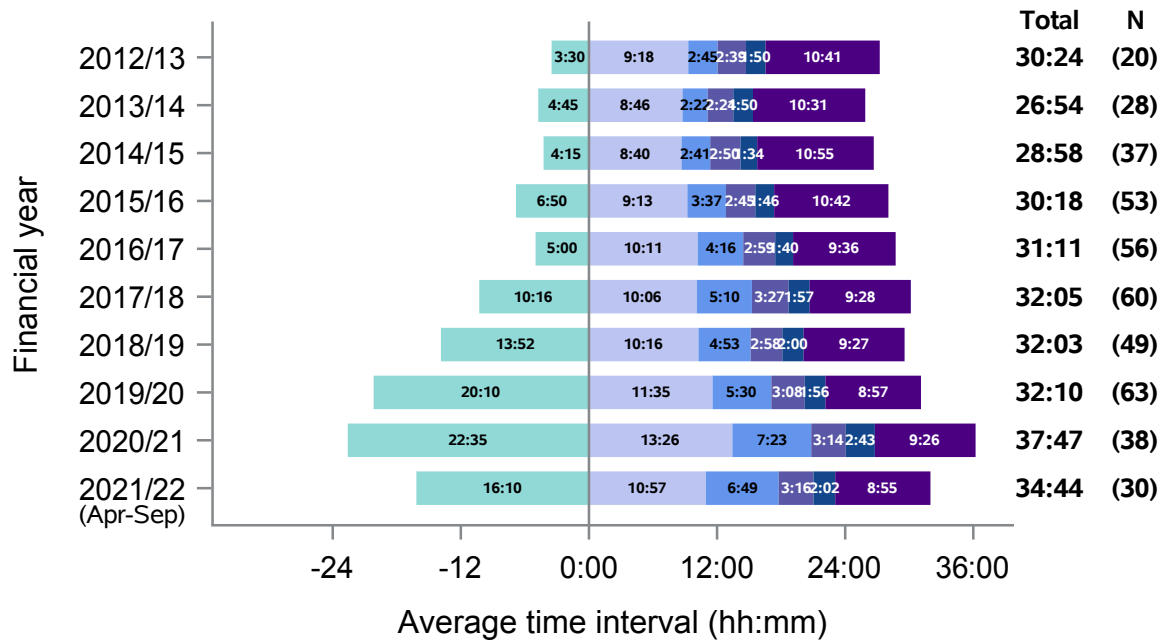


Median time from:

- Referral to approach
- Approach to first kidney matching run
- First kidney matching run to first NORS team departure
- NORS team departure from base to retrieval operation start
- Retrieval operation start to operation end
- Retrieval operation end to kidney perfusion with recipient blood

Eastern

Figure 7 - Median times of DCD organ donation process, Eastern, 1 April 2012 - 30 September 2021

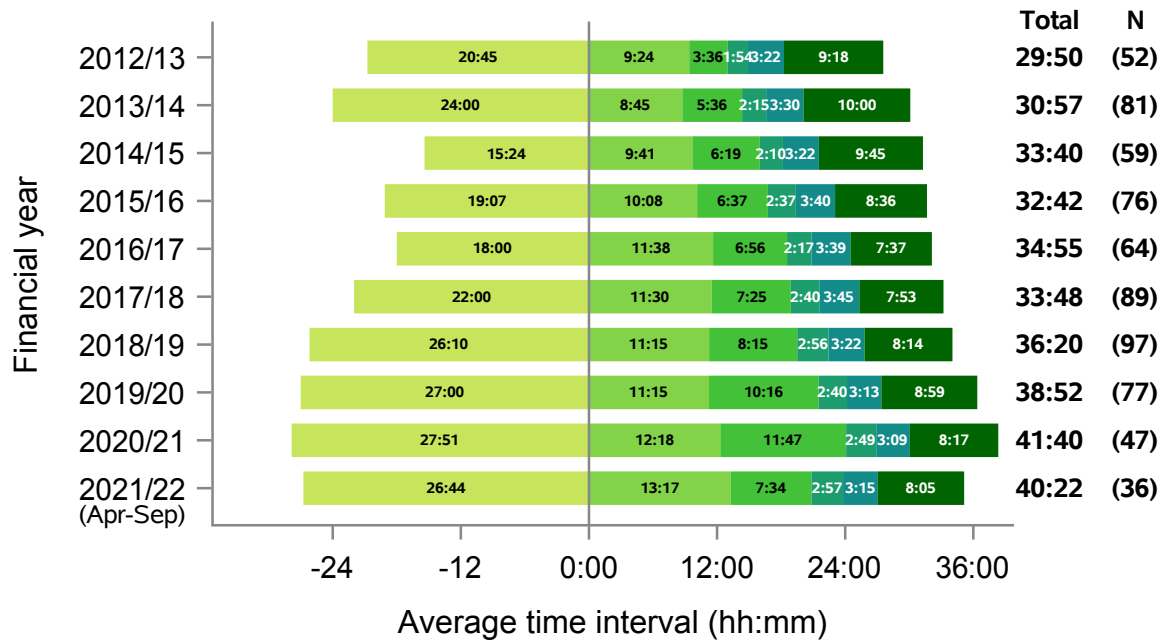


Median time from:

- Referral to approach
- Approach to first kidney matching run
- First kidney matching run to first NORS team departure
- NORS team departure from base to retrieval operation start
- Retrieval operation start to operation end
- Retrieval operation end to kidney perfusion with recipient blood

London

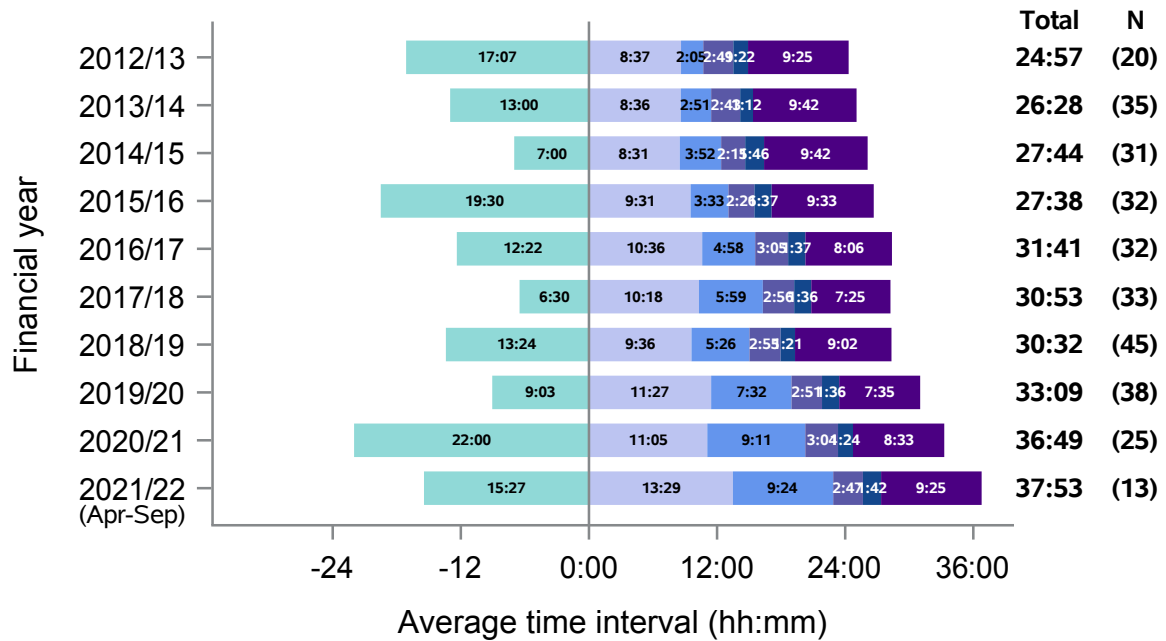
Figure 8 - Median times of DBD organ donation process, London, 1 April 2012 - 30 September 2021



- Median time from:**
- Referral to approach
 - Approach to first kidney matching run
 - First kidney matching run to first NORS team departure
 - NORS team departure from base to retrieval operation start
 - Retrieval operation start to operation end
 - Retrieval operation end to kidney perfusion with recipient blood

London

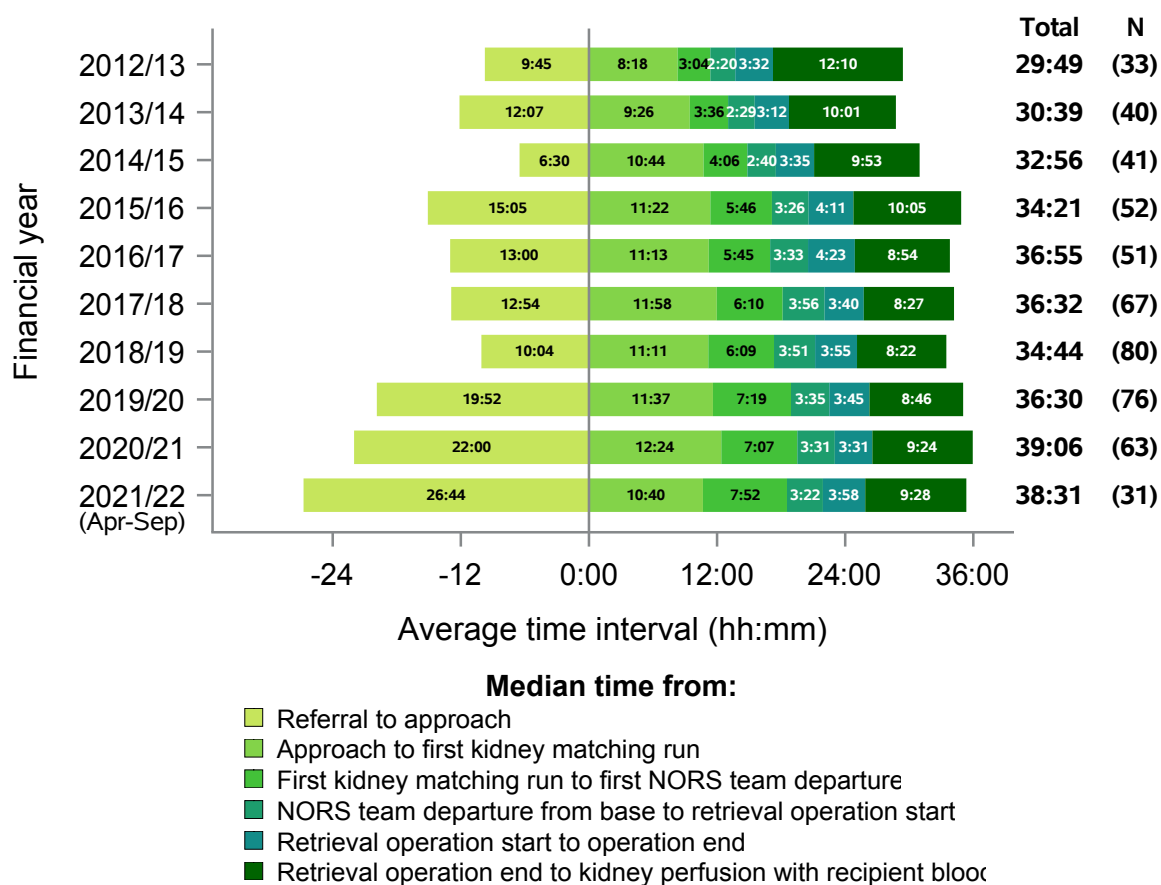
Figure 9 - Median times of DCD organ donation process, London, 1 April 2012 - 30 September 2021



- Median time from:**
- Referral to approach
 - Approach to first kidney matching run
 - First kidney matching run to first NORS team departure
 - NORS team departure from base to retrieval operation start
 - Retrieval operation start to operation end
 - Retrieval operation end to kidney perfusion with recipient blood

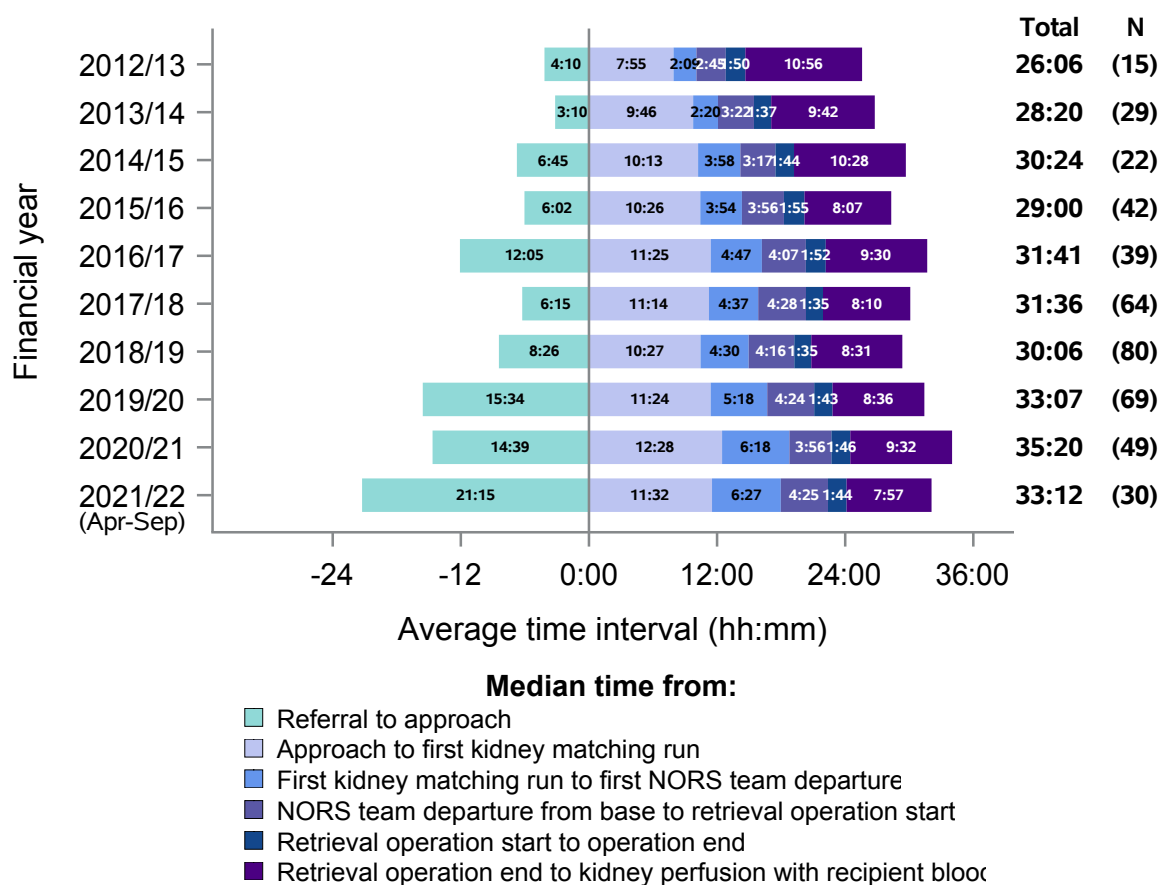
Midlands

Figure 10 - Median times of DBD organ donation process, Midlands, 1 April 2012 - 30 September 2021



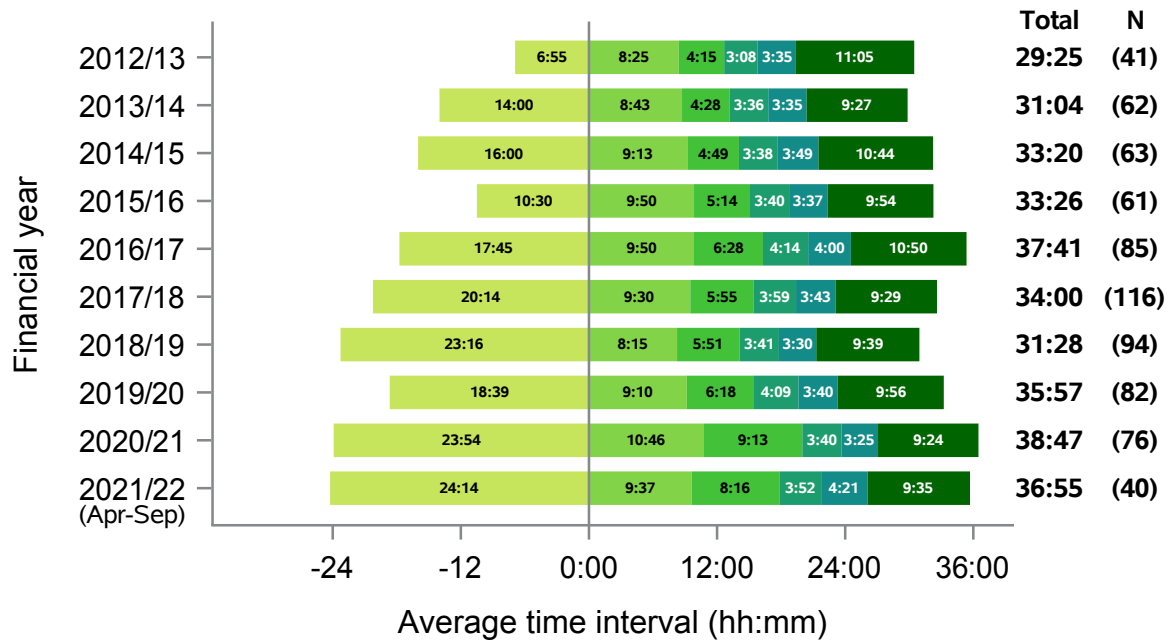
Midlands

Figure 11 - Median times of DCD organ donation process, Midlands, 1 April 2012 - 30 September 2021



North West

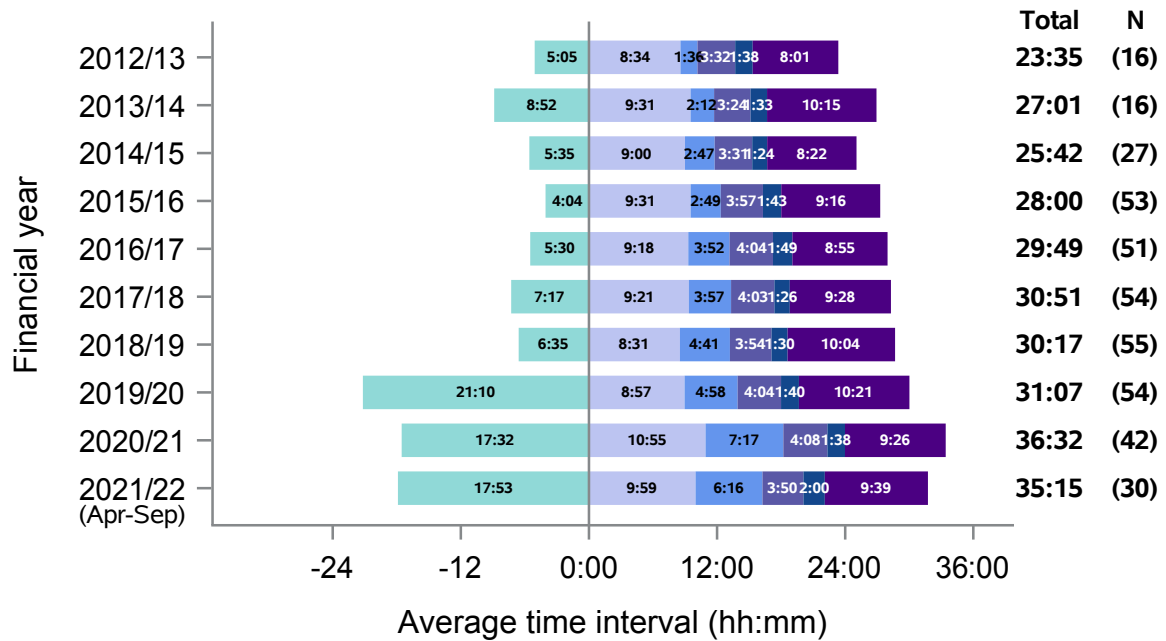
Figure 12 - Median times of DBD organ donation process, North West, 1 April 2012 - 30 September 2021



- Median time from:**
- Referral to approach
 - Approach to first kidney matching run
 - First kidney matching run to first NORS team departure
 - NORS team departure from base to retrieval operation start
 - Retrieval operation start to operation end
 - Retrieval operation end to kidney perfusion with recipient blood

North West

Figure 13 - Median times of DCD organ donation process, North West, 1 April 2012 - 30 September 2021

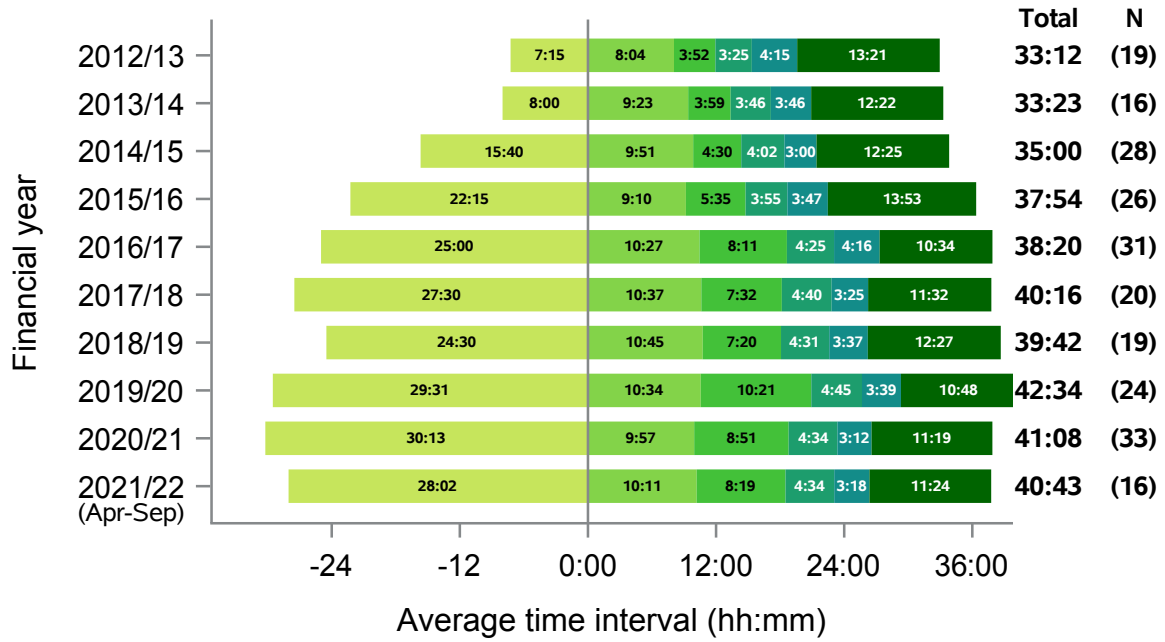


Median time from:

- Referral to approach
- Approach to first kidney matching run
- First kidney matching run to first NORS team departure
- NORS team departure from base to retrieval operation start
- Retrieval operation start to operation end
- Retrieval operation end to kidney perfusion with recipient blood

Northern Ireland

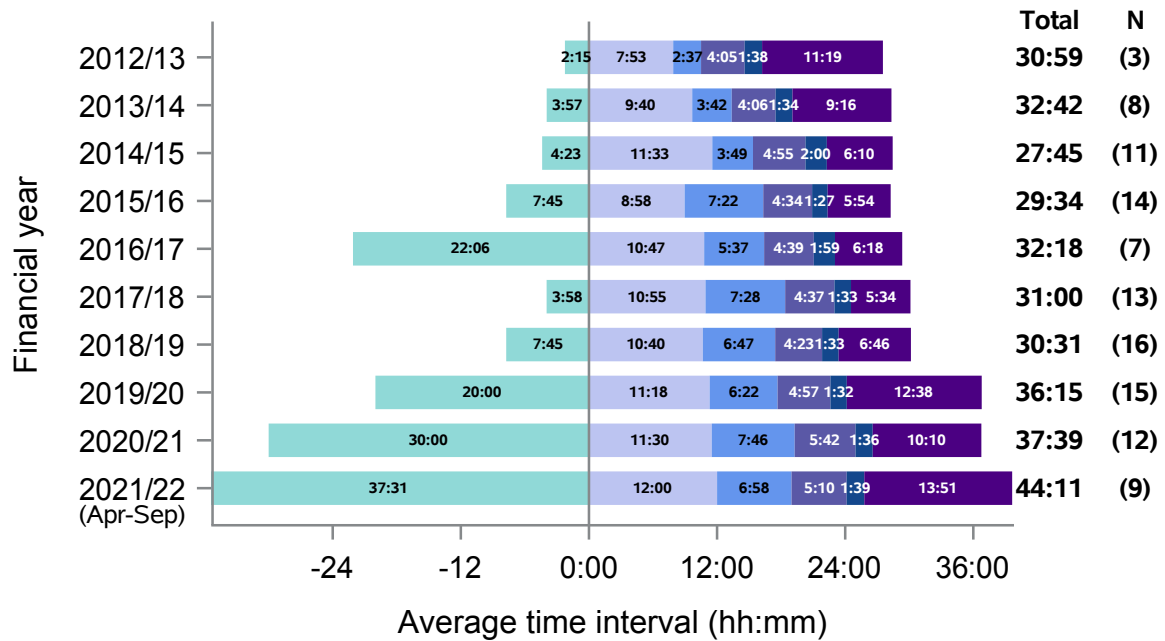
Figure 14 - Median times of DBD organ donation process, Northern Ireland, 1 April 2012 - 30 September 2021



- Median time from:**
- Referral to approach
 - Approach to first kidney matching run
 - First kidney matching run to first NORS team departure
 - NORS team departure from base to retrieval operation start
 - Retrieval operation start to operation end
 - Retrieval operation end to kidney perfusion with recipient blood

Northern Ireland

Figure 15 - Median times of DCD organ donation process, Northern Ireland, 1 April 2012 - 30 September 2021

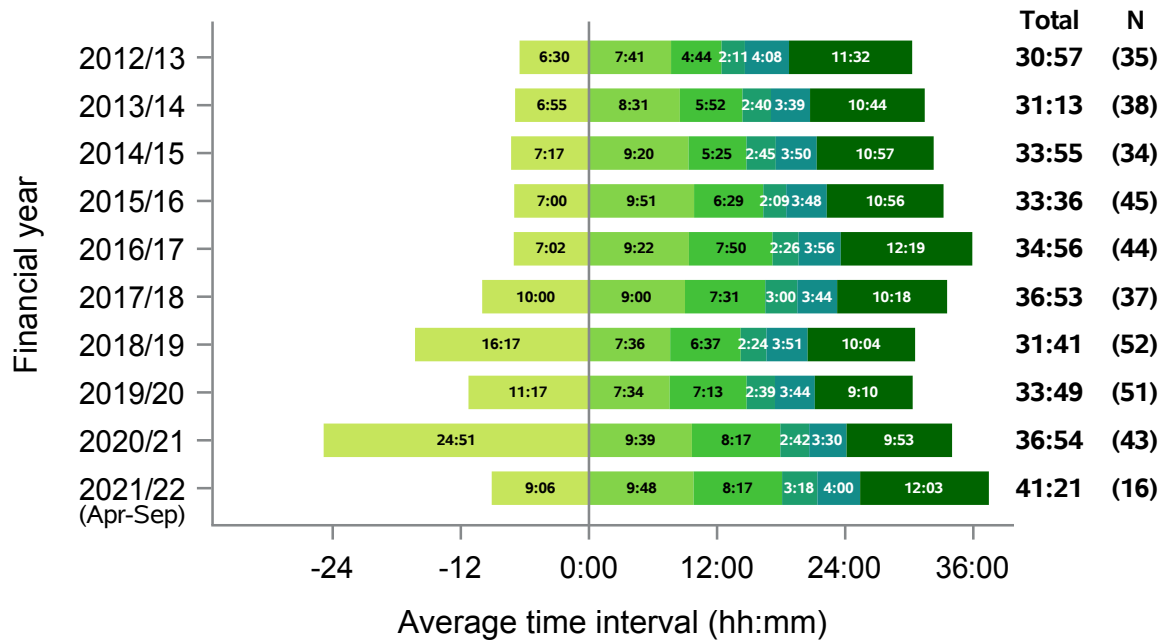


Median time from:

- Referral to approach
- Approach to first kidney matching run
- First kidney matching run to first NORS team departure
- NORS team departure from base to retrieval operation start
- Retrieval operation start to operation end
- Retrieval operation end to kidney perfusion with recipient blood

Northern

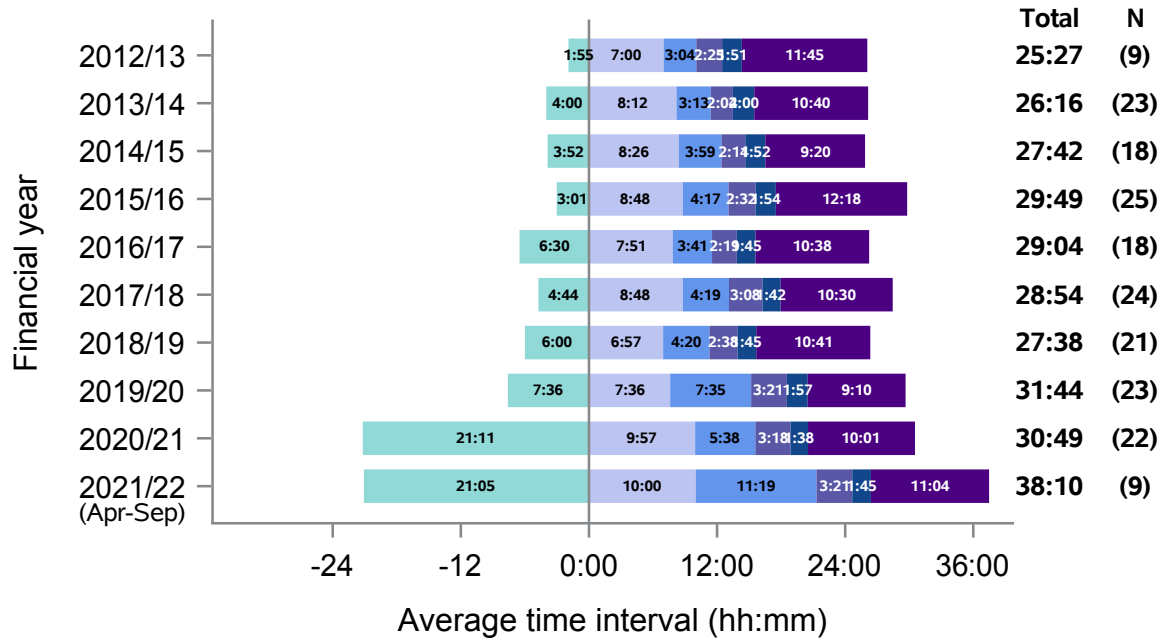
Figure 16 - Median times of DBD organ donation process, Northern, 1 April 2012 - 30 September 2021



- Median time from:**
- Referral to approach
 - Approach to first kidney matching run
 - First kidney matching run to first NORS team departure
 - NORS team departure from base to retrieval operation start
 - Retrieval operation start to operation end
 - Retrieval operation end to kidney perfusion with recipient blood

Northern

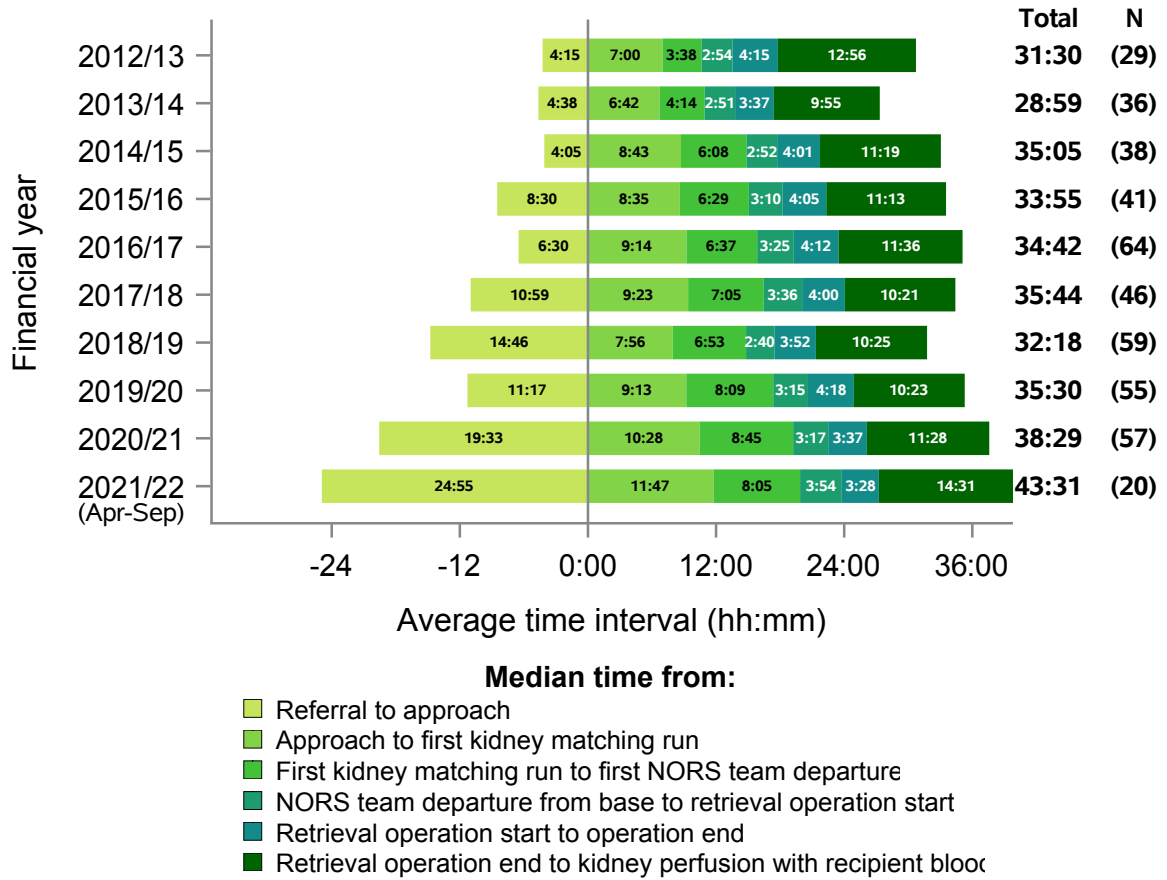
Figure 17 - Median times of DCD organ donation process, Northern, 1 April 2012 - 30 September 2021



- Median time from:**
- Referral to approach
 - Approach to first kidney matching run
 - First kidney matching run to first NORS team departure
 - NORS team departure from base to retrieval operation start
 - Retrieval operation start to operation end
 - Retrieval operation end to kidney perfusion with recipient blood

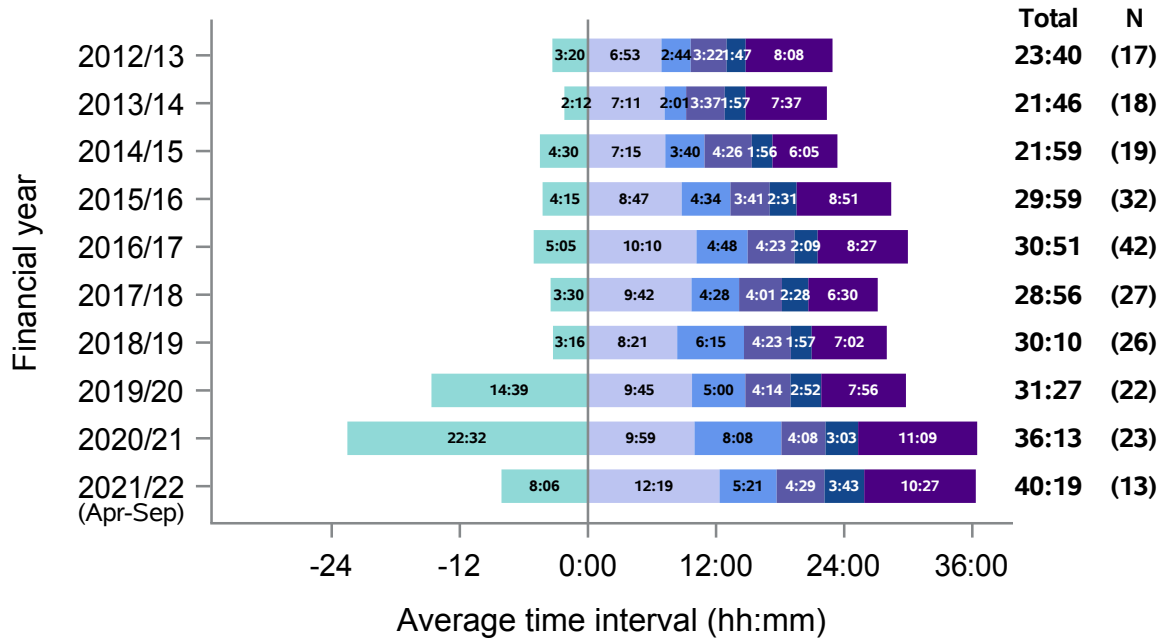
Scotland

Figure 18 - Median times of DBD organ donation process, Scotland, 1 April 2012 - 30 September 2021



Scotland

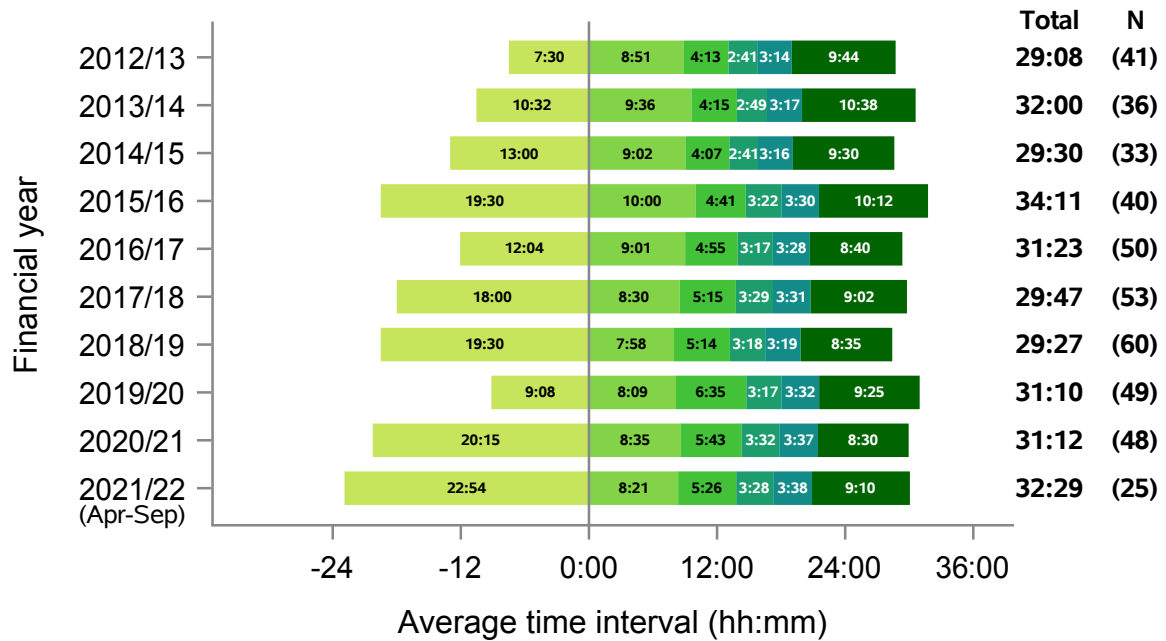
Figure 19 - Median times of DCD organ donation process, Scotland, 1 April 2012 - 30 September 2021



- Median time from:**
- Referral to approach
 - Approach to first kidney matching run
 - First kidney matching run to first NORS team departure
 - NORS team departure from base to retrieval operation start
 - Retrieval operation start to operation end
 - Retrieval operation end to kidney perfusion with recipient blood

South Central

Figure 20 - Median times of DBD organ donation process, South Central, 1 April 2012 - 30 September 2021

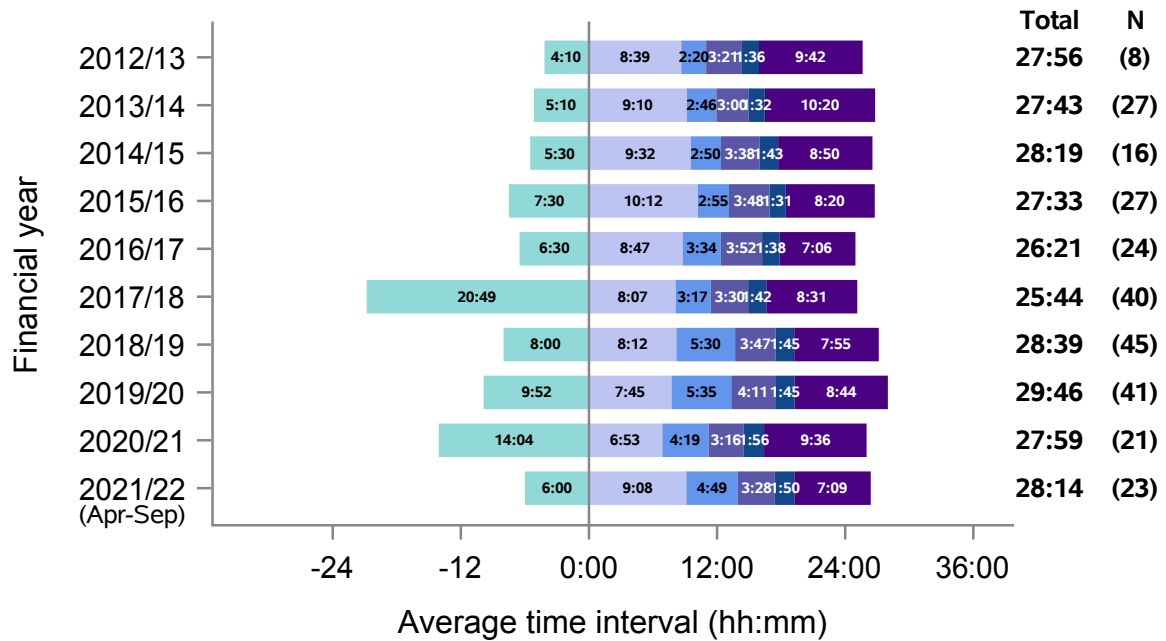


Median time from:

- Referral to approach
- Approach to first kidney matching run
- First kidney matching run to first NORS team departure
- NORS team departure from base to retrieval operation start
- Retrieval operation start to operation end
- Retrieval operation end to kidney perfusion with recipient blood

South Central

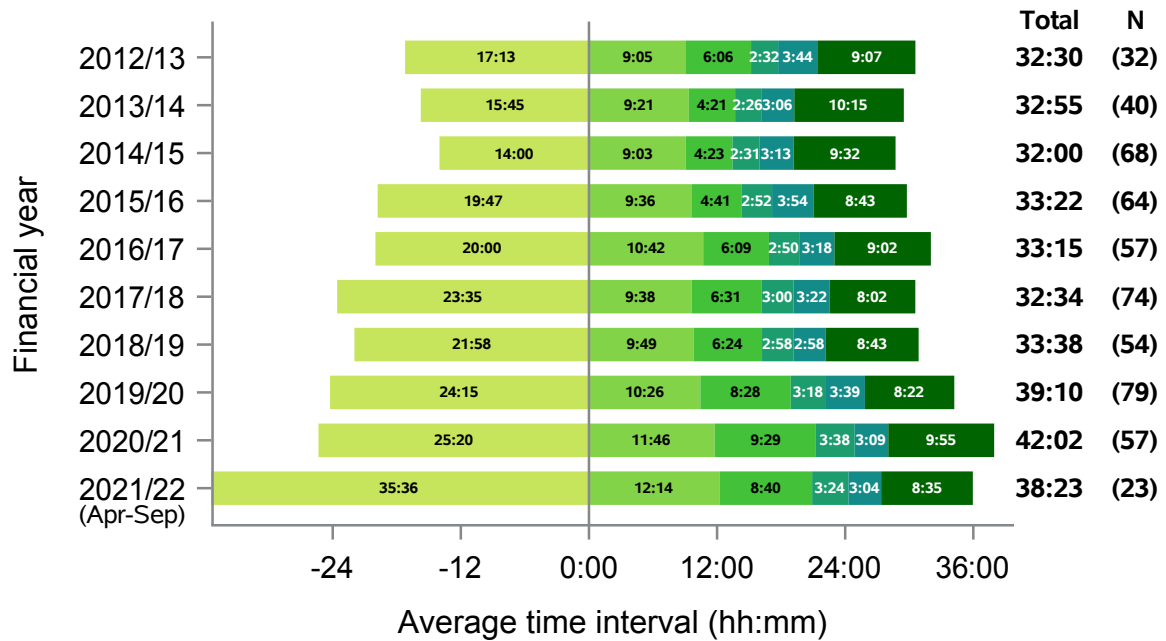
Figure 21 - Median times of DCD organ donation process, South Central, 1 April 2012 - 30 September 2021



- Median time from:**
- Referral to approach
 - Approach to first kidney matching run
 - First kidney matching run to first NORS team departure
 - NORS team departure from base to retrieval operation start
 - Retrieval operation start to operation end
 - Retrieval operation end to kidney perfusion with recipient blood

South East

Figure 22 - Median times of DBD organ donation process, South East, 1 April 2012 - 30 September 2021

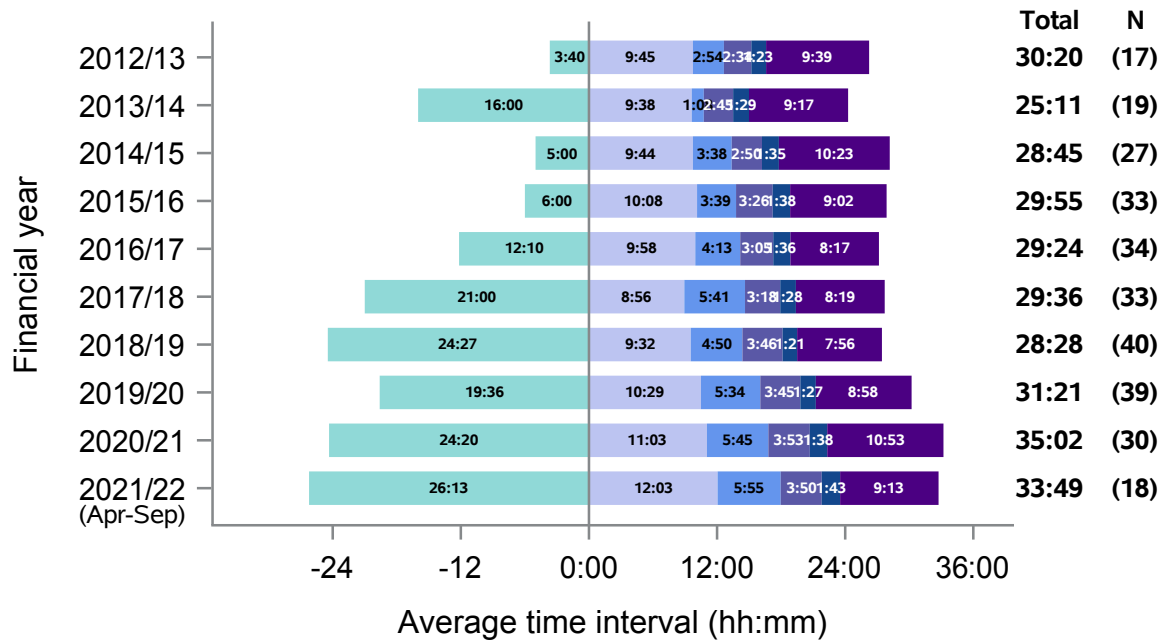


Median time from:

- Referral to approach
- Approach to first kidney matching run
- First kidney matching run to first NORS team departure
- NORS team departure from base to retrieval operation start
- Retrieval operation start to operation end
- Retrieval operation end to kidney perfusion with recipient blood

South East

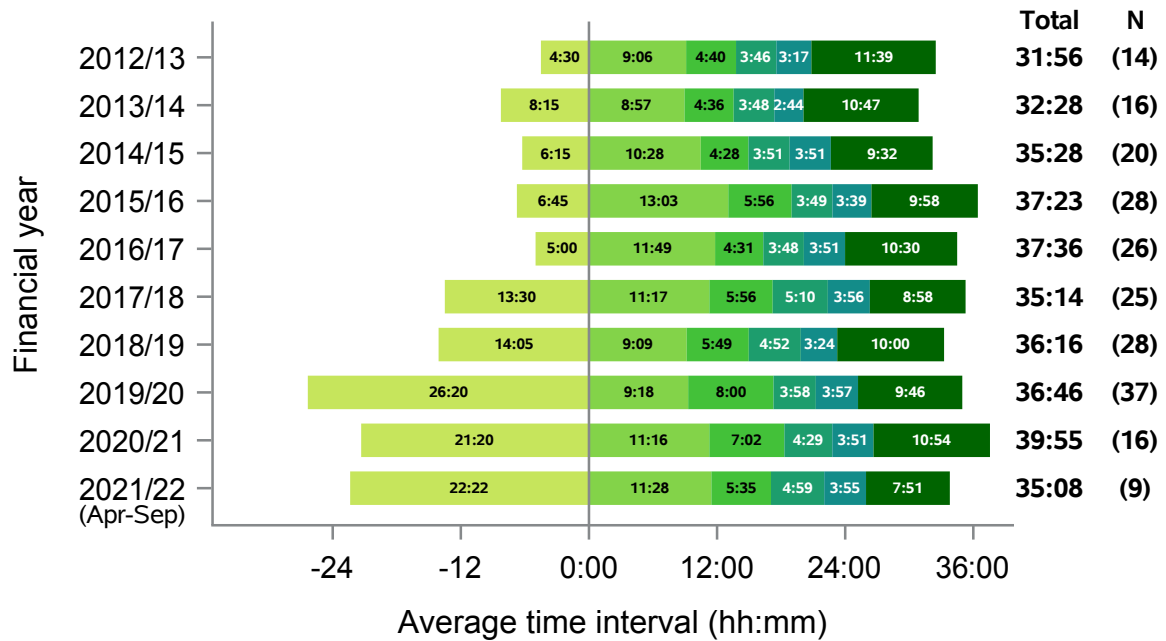
Figure 23 - Median times of DCD organ donation process, South East, 1 April 2012 - 30 September 2021



- Median time from:**
- Referral to approach
 - Approach to first kidney matching run
 - First kidney matching run to first NORS team departure
 - NORS team departure from base to retrieval operation start
 - Retrieval operation start to operation end
 - Retrieval operation end to kidney perfusion with recipient blood

South Wales

Figure 24 - Median times of DBD organ donation process, South Wales, 1 April 2012 - 30 September 2021

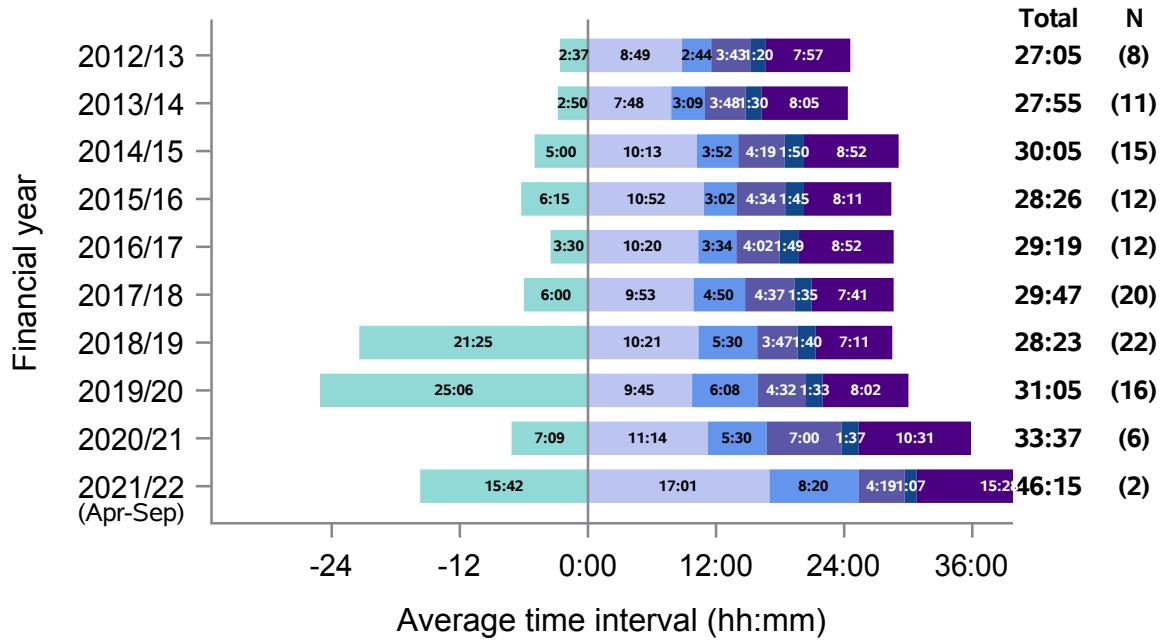


Median time from:

- Referral to approach
- Approach to first kidney matching run
- First kidney matching run to first NORS team departure
- NORS team departure from base to retrieval operation start
- Retrieval operation start to operation end
- Retrieval operation end to kidney perfusion with recipient blood

South Wales

Figure 25 - Median times of DCD organ donation process, South Wales, 1 April 2012 - 30 September 2021

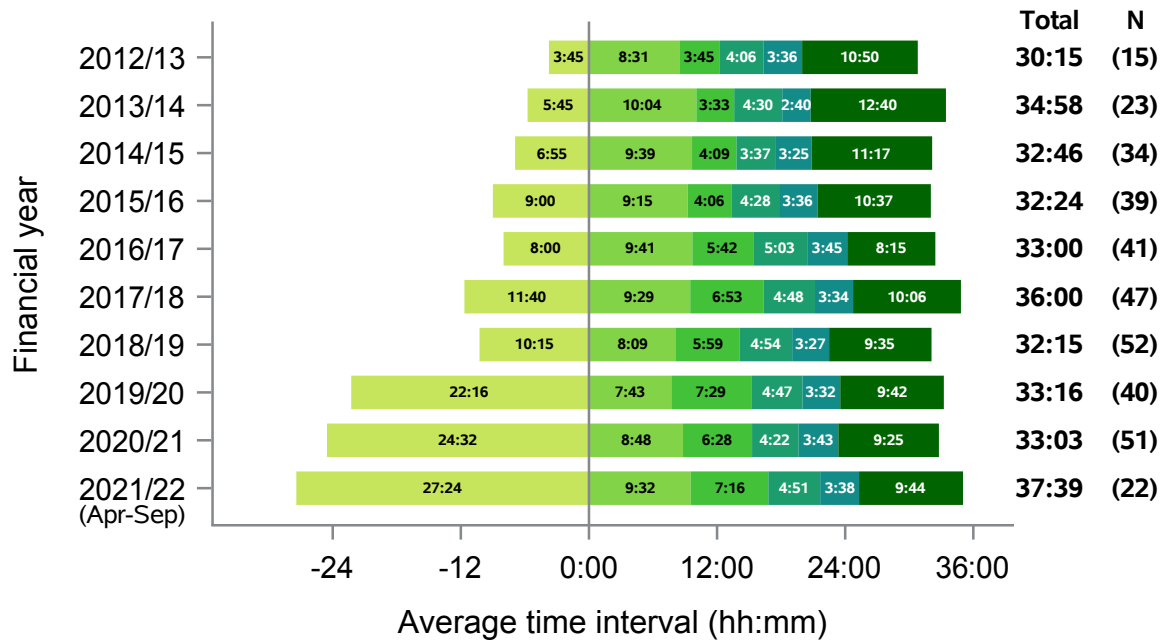


Median time from:

- Referral to approach
- Approach to first kidney matching run
- First kidney matching run to first NORS team departure
- NORS team departure from base to retrieval operation start
- Retrieval operation start to operation end
- Retrieval operation end to kidney perfusion with recipient blood

South West

Figure 26 - Median times of DBD organ donation process, South West, 1 April 2012 - 30 September 2021

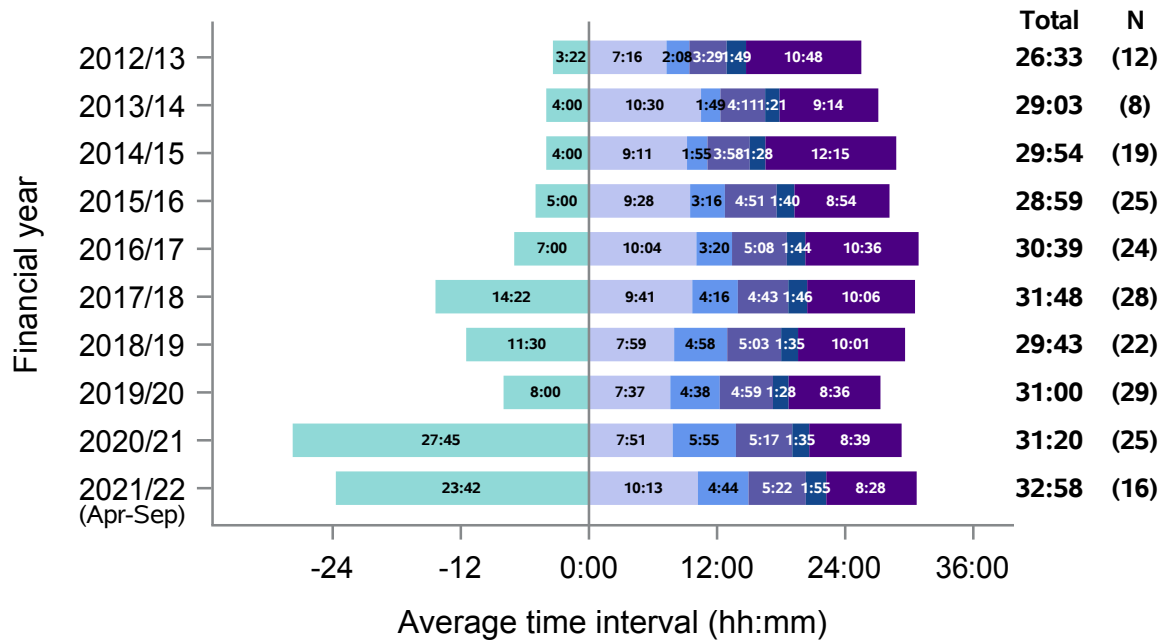


Median time from:

- Referral to approach
- Approach to first kidney matching run
- First kidney matching run to first NORS team departure
- NORS team departure from base to retrieval operation start
- Retrieval operation start to operation end
- Retrieval operation end to kidney perfusion with recipient blood

South West

Figure 27 - Median times of DCD organ donation process, South West, 1 April 2012 - 30 September 2021

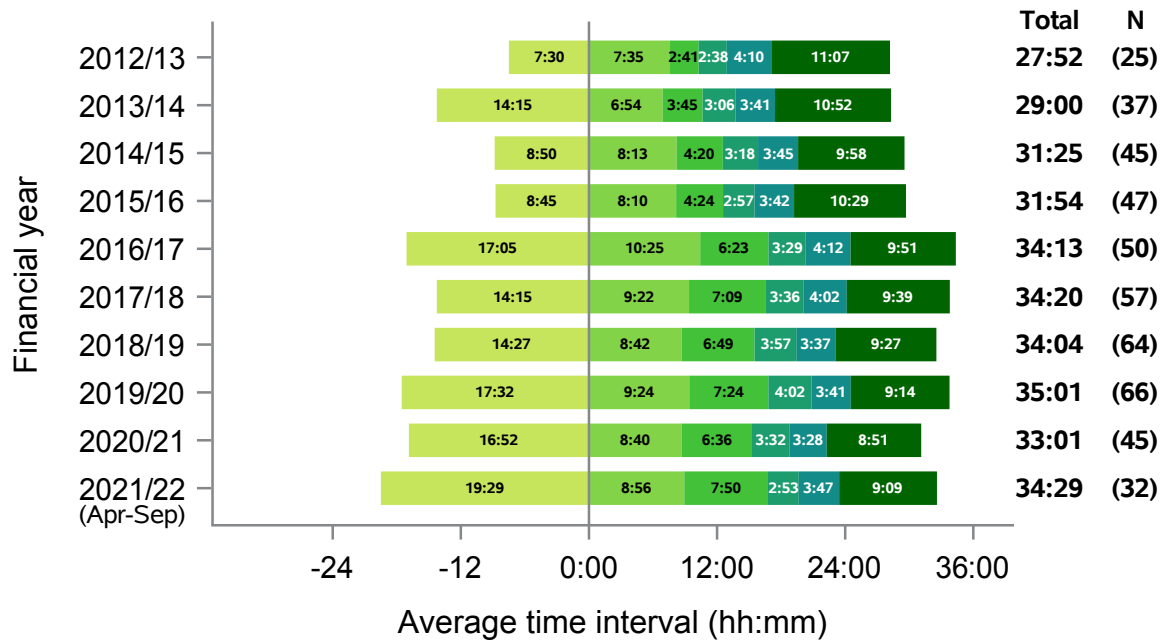


Median time from:

- Referral to approach
- Approach to first kidney matching run
- First kidney matching run to first NORS team departure
- NORS team departure from base to retrieval operation start
- Retrieval operation start to operation end
- Retrieval operation end to kidney perfusion with recipient blood

Yorkshire

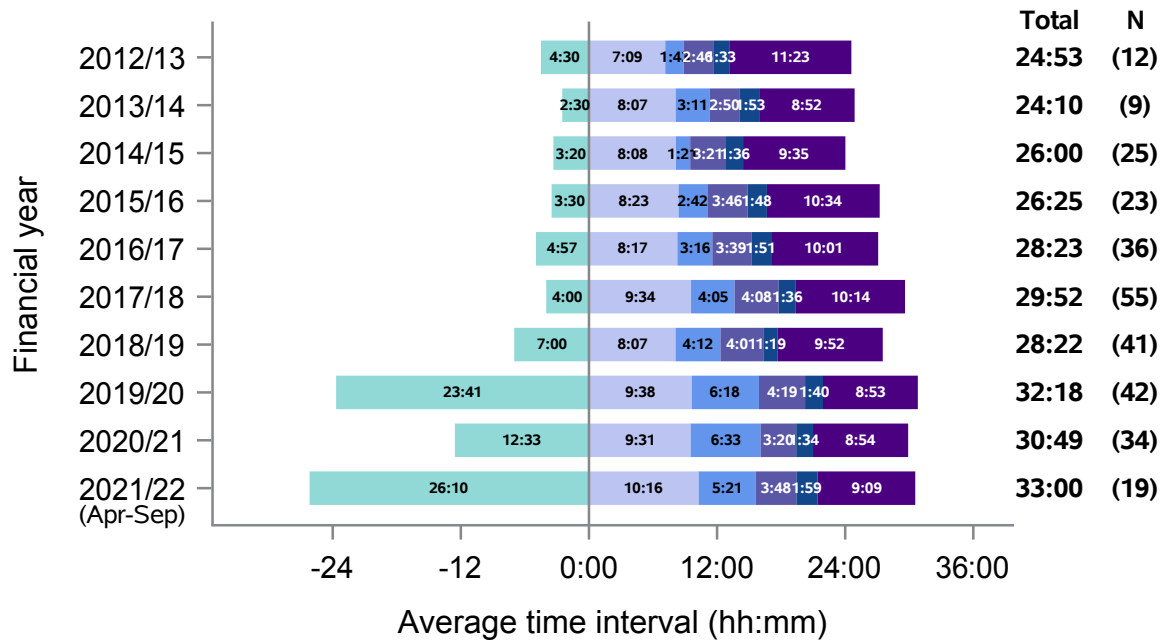
Figure 28 - Median times of DBD organ donation process, Yorkshire, 1 April 2012 - 30 September 2021



- Median time from:**
- Referral to approach
 - Approach to first kidney matching run
 - First kidney matching run to first NORS team departure
 - NORS team departure from base to retrieval operation start
 - Retrieval operation start to operation end
 - Retrieval operation end to kidney perfusion with recipient blood

Yorkshire

Figure 29 - Median times of DCD organ donation process, Yorkshire, 1 April 2012 - 30 September 2021



- Median time from:**
- Referral to approach
 - Approach to first kidney matching run
 - First kidney matching run to first NORS team departure
 - NORS team departure from base to retrieval operation start
 - Retrieval operation start to operation end
 - Retrieval operation end to kidney perfusion with recipient blood

Table 3 Summary of Organ Donation Services Teams median timings, DBD, 2021/2022 (Apr-Sep)

Team name	Referral to approach	Approach to first kidney matching run	First kidney matching run to first NORS team departure	NORS team departure from base to retrieval operation start	Retrieval operation start to operation end	Retrieval operation end to kidney perfusion with recipient blood
Eastern	19:49	14:20	8:47	3:13	4:24	8:41
London	27:51	12:18	11:47	2:49	3:09	8:17
Midlands	22:00	12:24	7:07	3:31	3:31	9:24
Northern	24:51	9:39	8:17	2:42	3:30	9:53
Northern Ireland	30:13	9:57	8:51	4:34	3:12	11:19
North West	23:54	10:46	9:13	3:40	3:25	9:24
Scotland	19:33	10:28	8:45	3:17	3:37	11:28
South Central	20:15	8:35	5:43	3:32	3:37	8:30
South East	25:20	11:46	9:29	3:38	3:09	9:55
South Wales	21:20	11:16	7:02	4:29	3:51	10:54
South West	24:32	8:48	6:28	4:22	3:43	9:25
Yorkshire	16:52	8:40	6:36	3:32	3:28	8:51

Table 4 Summary of Organ Donation Services Teams median timings, DCD, 2021/2022 (Apr-Sep)

Team name	Referral to approach	Approach to first kidney matching run	First kidney matching run to first NORS team departure	NORS team departure from base to operation start	Operation start to operation end	Operation end to kidney perfusion with recipient's blood
Eastern	22:35	13:26	7:23	3:14	2:43	9:26
London	22:00	11:05	9:11	3:04	1:24	8:33
Midlands	14:39	12:28	6:18	3:56	1:46	9:32
Northern	21:11	9:57	5:38	3:18	1:38	10:01
Northern Ireland	30:00	11:30	7:46	5:42	1:36	10:10
North West	17:32	10:55	7:17	4:08	1:38	9:26
Scotland	22:32	9:59	8:08	4:08	3:03	11:09
South Central	14:04	6:53	4:19	3:16	1:56	9:36
South East	24:20	11:03	5:45	3:53	1:38	10:53
South Wales	7:09	11:14	5:30	7:00	1:37	10:31
South West	27:45	7:51	5:55	5:17	1:35	8:39
Yorkshire	12:33	9:31	6:33	3:20	1:34	8:54