

NHS BLOOD AND TRANSPLANT

CARDIOTHORACIC ADVISORY GROUP

CARDIOTHORACIC TRANSPLANT ACTIVITY UPDATE

HEART

- Adult only (age \geq 16)
- Includes multi-organ but excludes heart-lung

Figure 1 Adult heart transplants by centre and quarter, last 3 years up to 30 June 2021

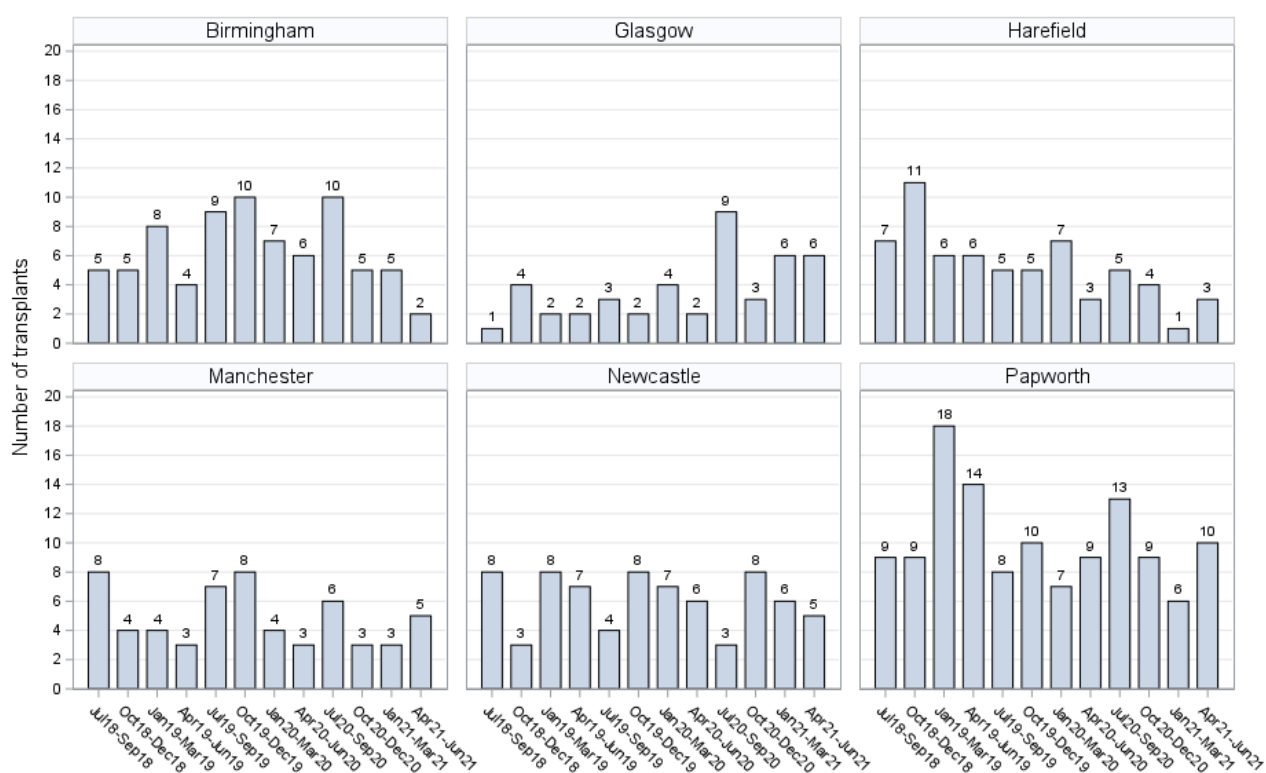


Table 1 Adult heart transplants, last 2 year comparison

Centre	2019/2020	2020/2021	% change
Birmingham	30	26	-13.3%
Glasgow	11	20	81.8%
Harefield	23	13	-43.5%
Manchester	22	15	-31.8%
Newcastle	26	23	-11.5%
Papworth	39	37	-5.1%
Total	151	134	-11.3%

Figure 2 Adult patients on the heart transplant list at the end of each quarter, by centre

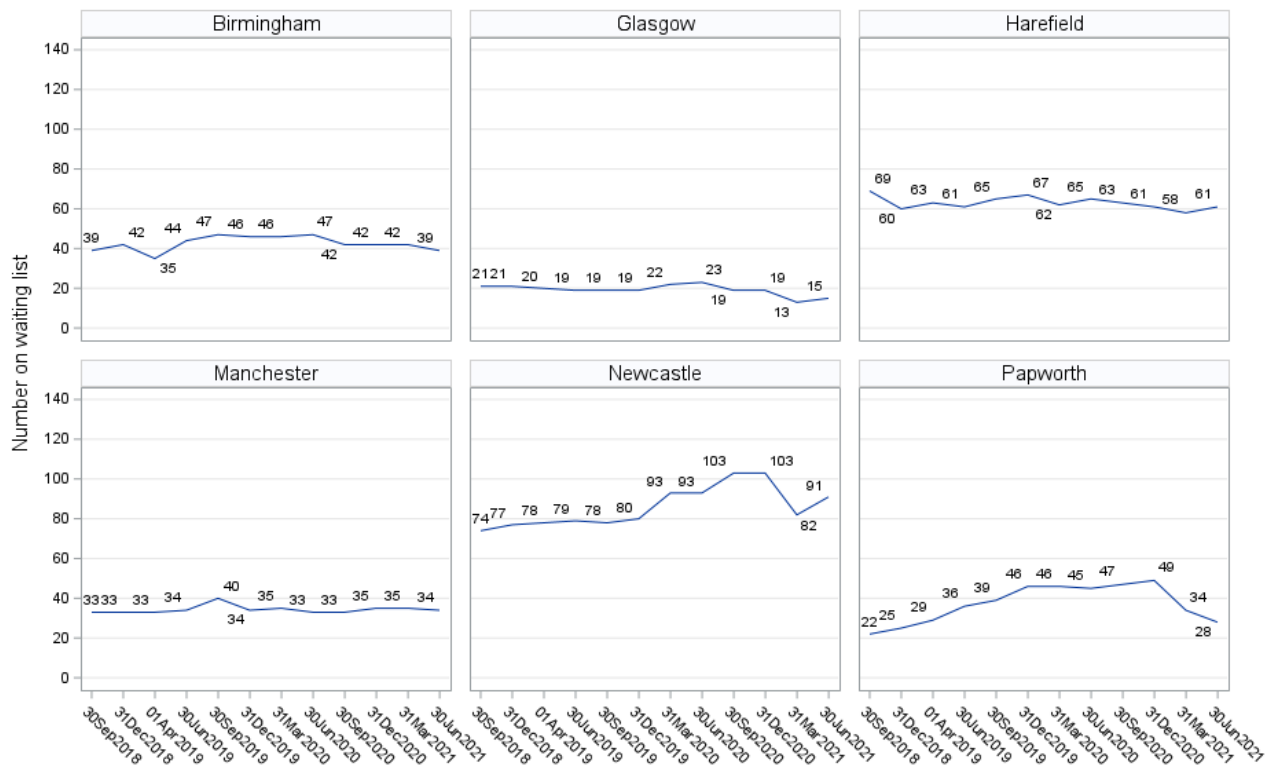
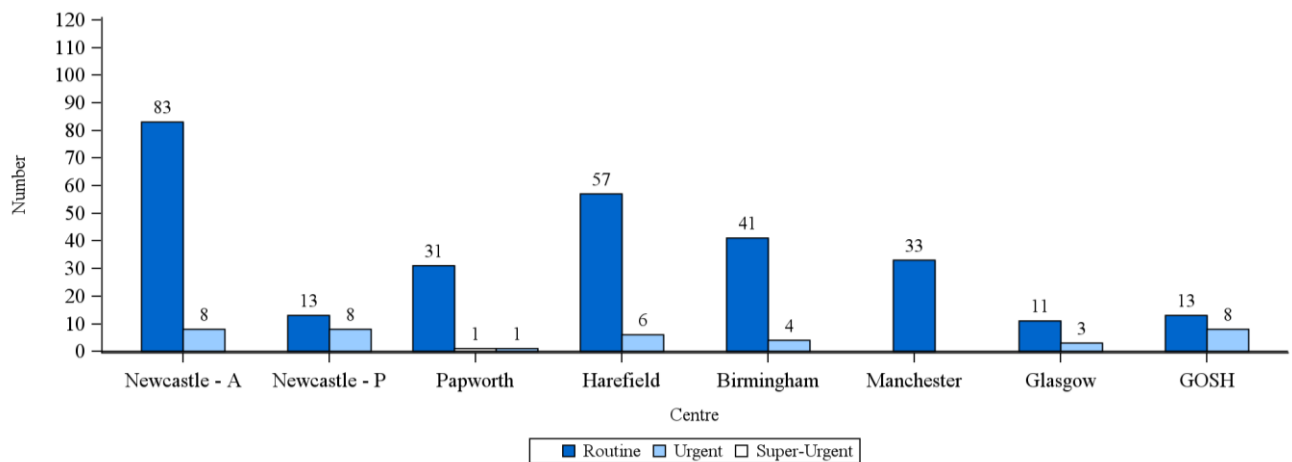


Figure 3 Number on heart waiting list in the UK by centre and urgency, as at 19 August 2021 (adult and paediatric)



LUNG

- Adult only (age \geq 16)
- Includes heart-lung and other multi-organ transplants

Figure 4 Adult lung transplants by centre and quarter, last 3 years up to 30 June 2021

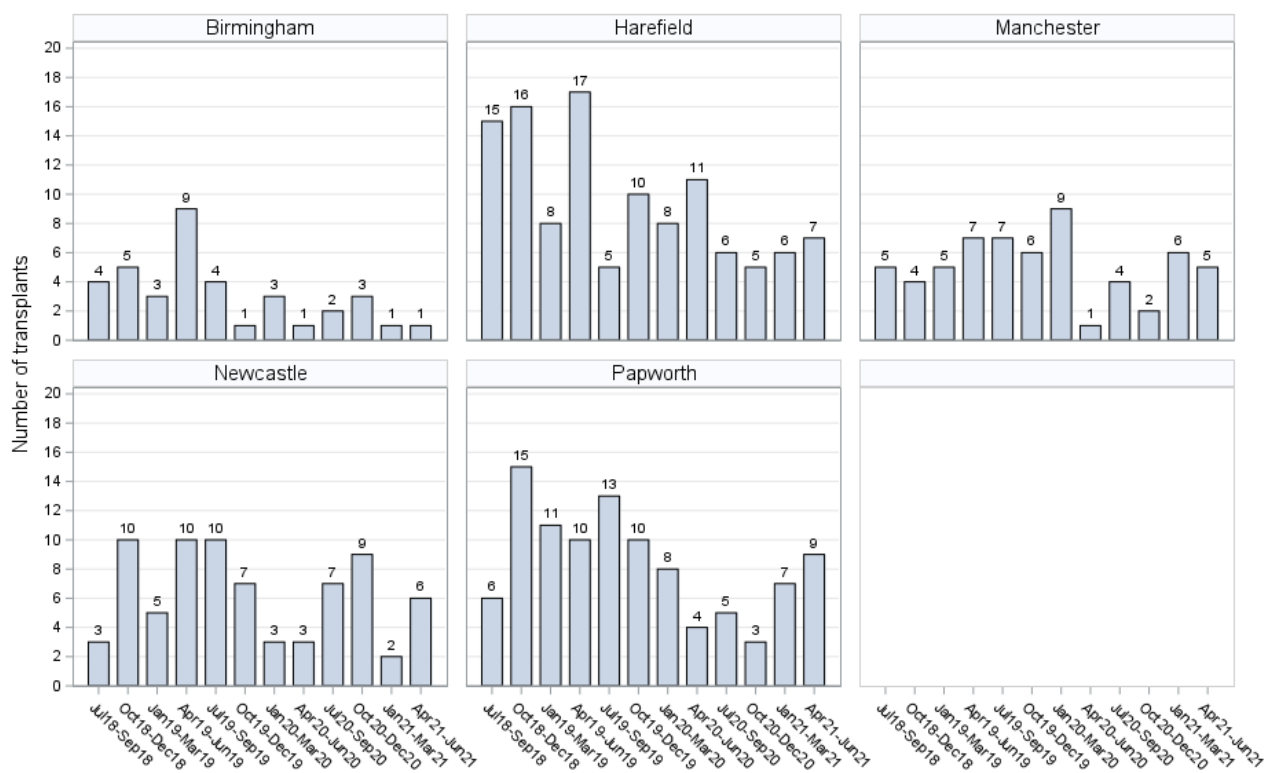


Table 2 Adult lung transplants, last 2 year comparison

Centre	2019/2020	2020/2021	% change
Birmingham	17	7	-58.8%
Harefield	40	28	-30.0%
Manchester	29	13	-55.2%
Newcastle	30	21	-30.0%
Papworth	41	19	-53.7%
Total	157	88	-43.9%

Figure 5 Adult patients on the lung transplant list at the end of each quarter, by centre

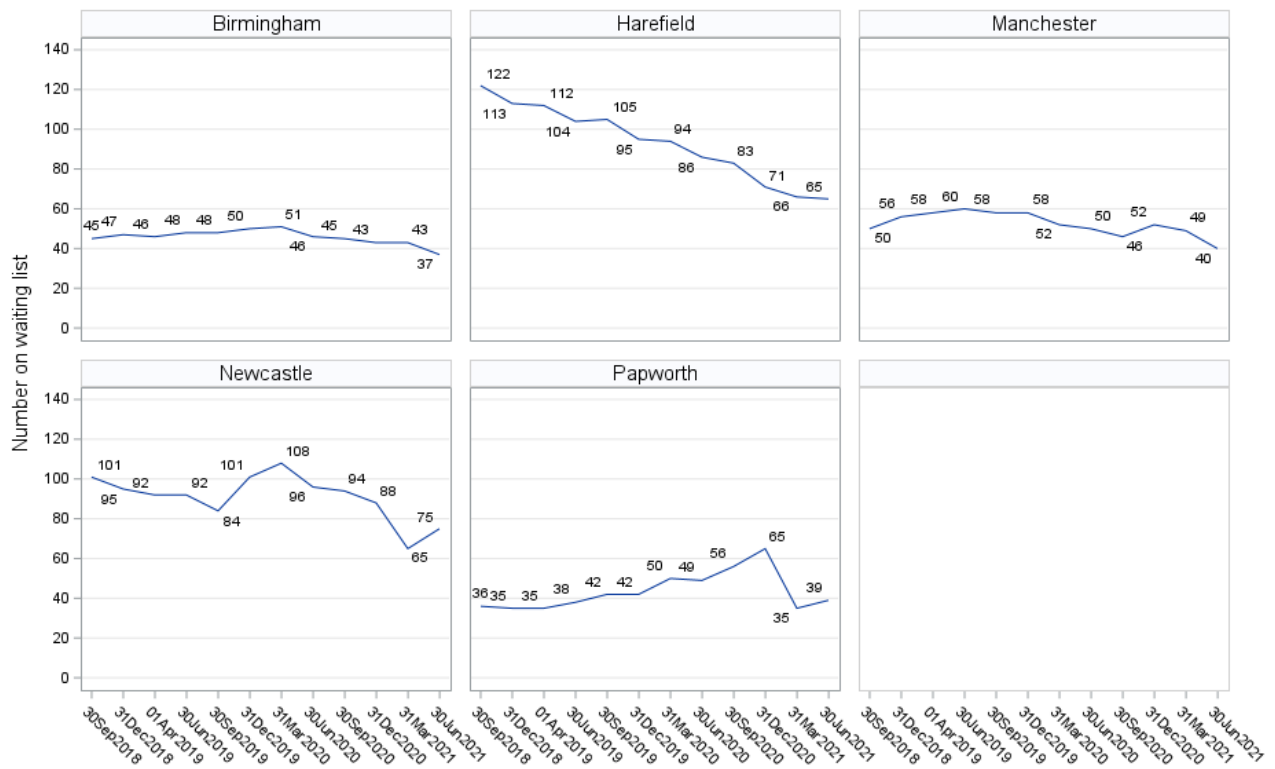


Figure 6 Number on lung waiting list in the UK by centre and urgency, as at 19 August 2021 (adult and paediatric)

