
Objective

On arrival at an accepting Transplant Centre, during the physical assessment of an organ, there are occasions when suspicious lesions are identified that require histopathology assessment. This is not a service provided or commissioned by NHSBT and the destination of samples can vary significantly.

This process provides guidance for all those involved in the histopathology assessment of samples that may affect the safety of an organ, including Transplant Centres, Histopathologists, Biomedical Scientists, Hub Operations staff, and SNs

Changes in this version

Update to flowcharts to align with **SOP4938** Sharing Clinical Information.

Change to SN (Specialist Nurse) to align with all other documents within Quality Management System.

Alerted flowchart colours to align with all other documents within Quality Management System.

Addition of reference to the importance of Donor ID when histopathology is performed under the recipient patient details.

Roles

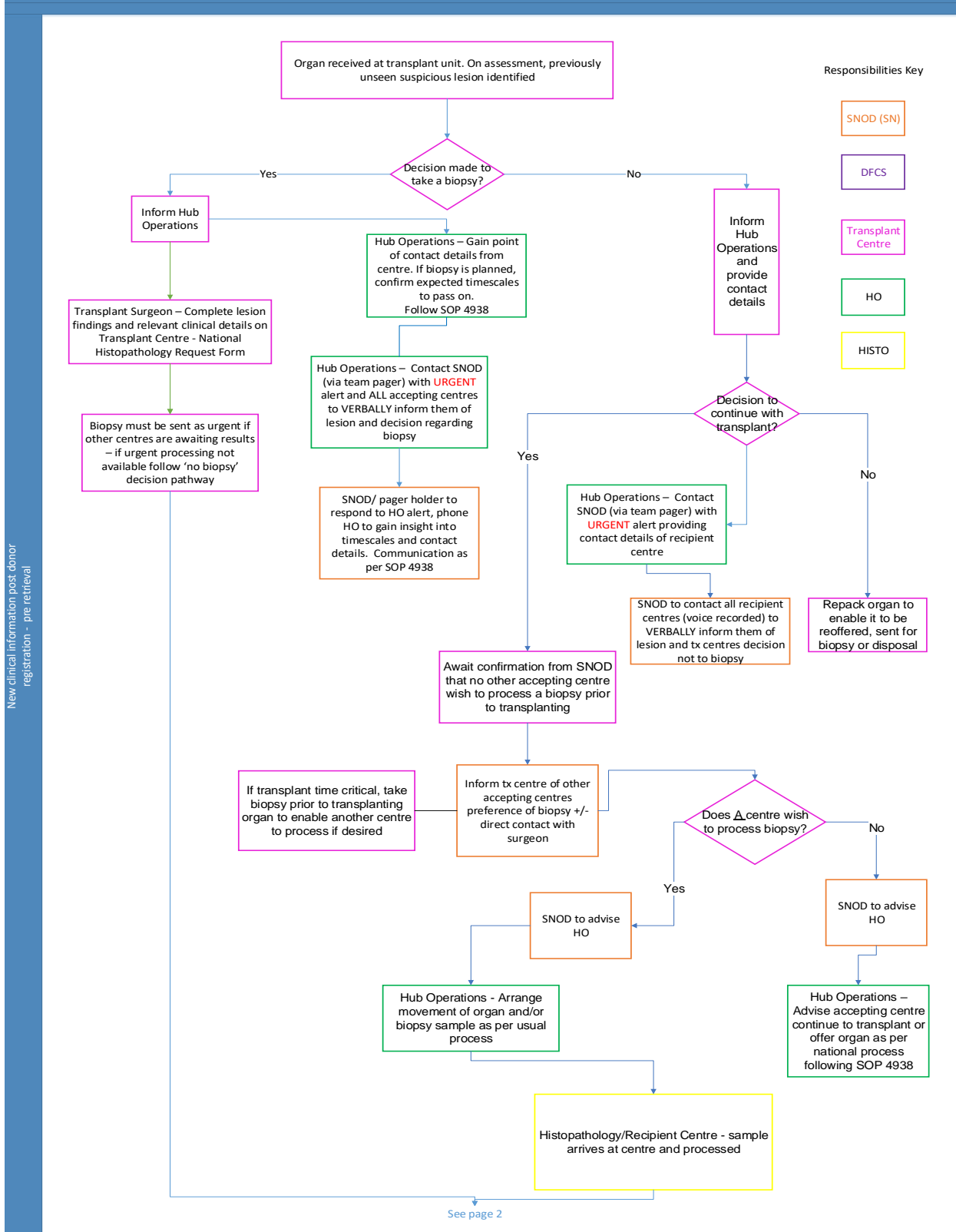
- **Transplant Centres** – To notify Hub Operations immediately if any new suspicious lesions are identified during organ assessment at the Recipient Centre, and timescales of any results to be available. To ensure consideration of other potential recipients when making decision around biopsy plans. To communicate both provisional and final results in a timely way.
- **Histopathology Laboratory** – Notify SN/Hub Operations of any findings or results following histopathology assessment.
- **Hub Operations (HO)** – To follow **SOP4938** for sharing of new clinical information.
- **Specialist Nurse (SN)** – The SN is responsible for ensuring the provisional and final histopathology results are ascertained. SN to follow **SOP4938** for Sharing of Clinical Information.
- **Donor Family Care Service (DFCS)** – To forward all histopathology findings to the SN as soon as they are received from Hub Operations. N.B. the **DFCS** is not a 24/7 service

SOP5735/2 – New Findings Made at Transplant Centres Requiring Histopathology Assessment



Blood and Transplant
Copy No:
Effective date: 16/08/2021

Transplant centre process



Responsibilities Key

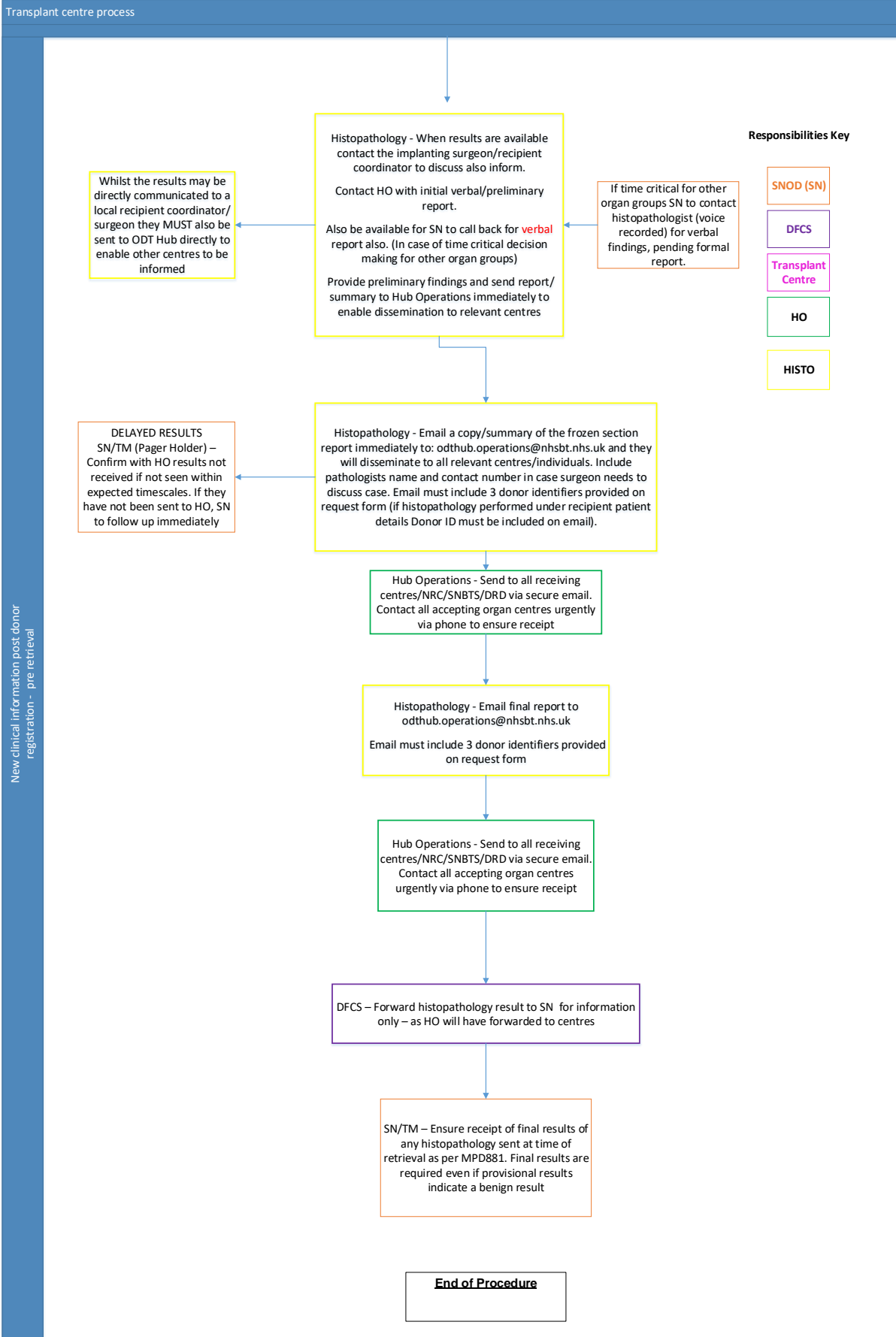
- SNOD (SN)
- DFCS
- Transplant Centre
- HO
- HISTO

New clinical information post donor registration - pre retrieval

SOP5735/2 – New Findings Made at Transplant Centres Requiring Histopathology Assessment



Blood and Transplant
Copy No:
Effective date: 16/08/2021



New clinical information post donor registration - pre retrieval

SOP5735/2 – New Findings Made at Transplant Centres Requiring Histopathology Assessment



Blood and Transplant
Copy No:
Effective date: 16/08/2021

Definitions

- None

Related Documents / References

- **FRM6390** – National Histopathology Request Form – For use by Transplant Centre
- **MPD881** – Findings Requiring Additional Action