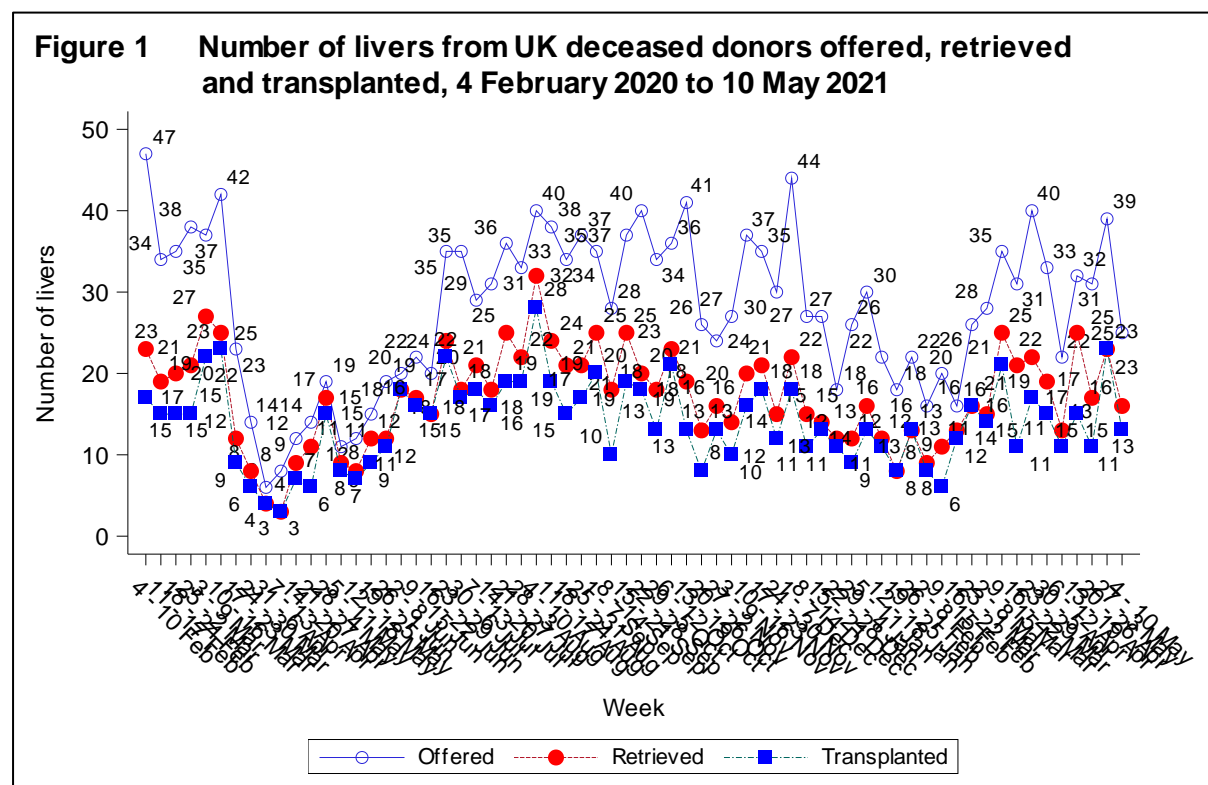


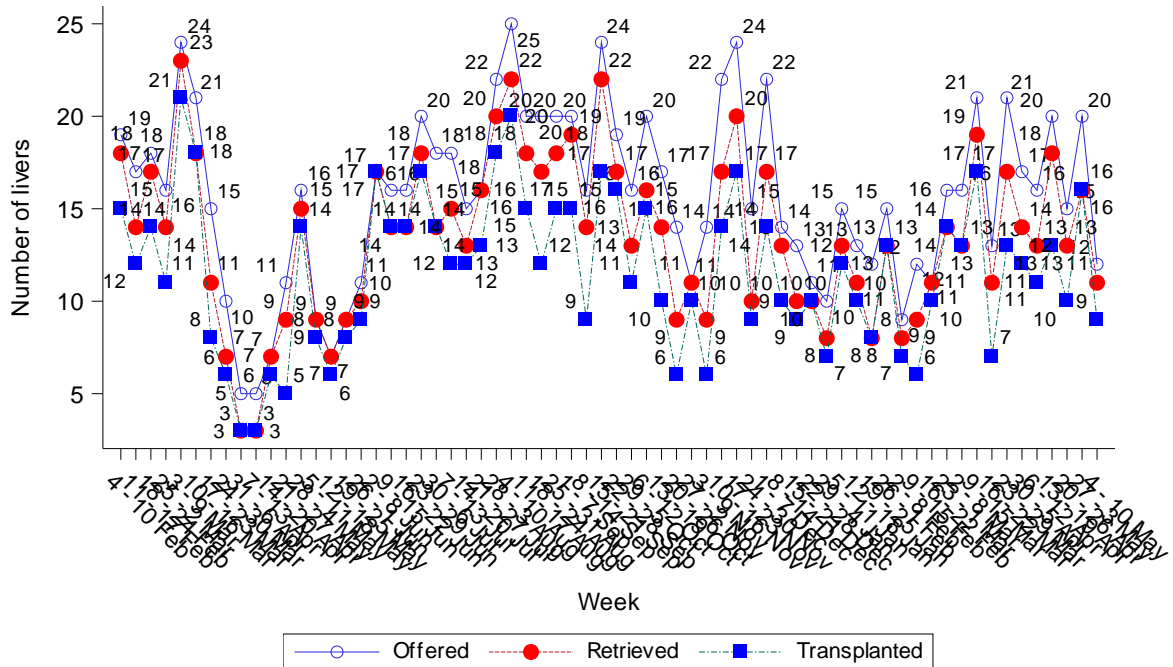
# NHS BLOOD & TRANSPLANT

## Liver offering outcome, 4 February 2020 to 10 May 2021

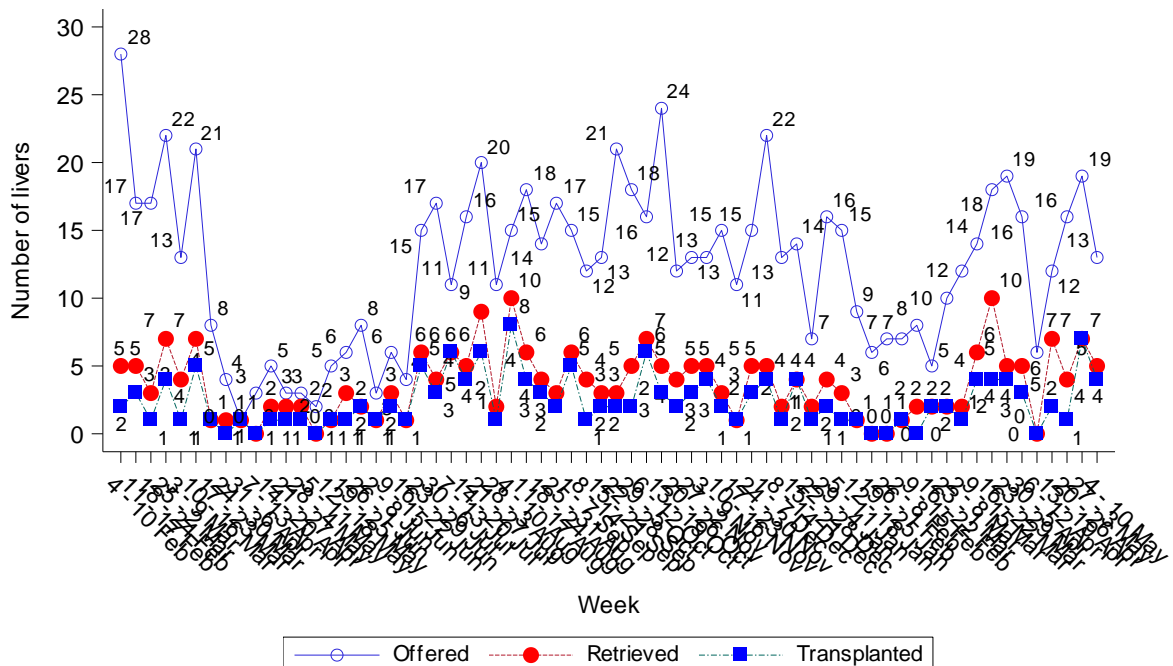
This report examines the offering outcome of livers offered for transplantation from UK deceased donors between 4 February 2020 and 10 May 2021 as recorded on the UK Transplant Registry on 12 May 2021.



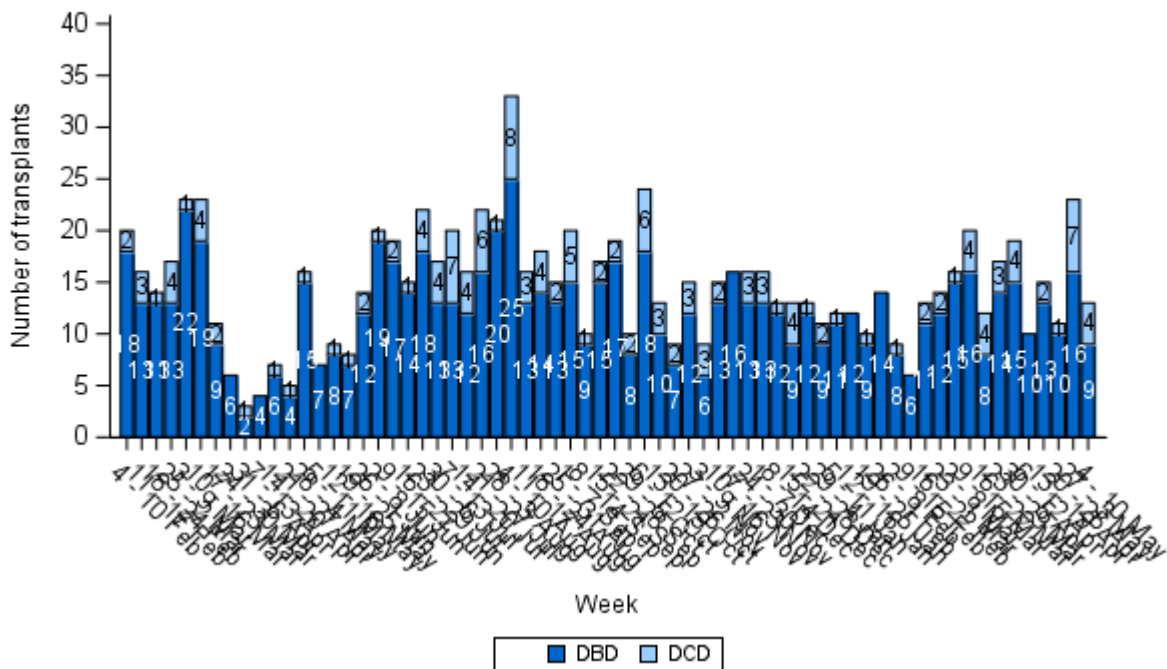
**Figure 2A** Number of livers from UK DBD donors offered, retrieved and transplanted, 4 February 2020 to 10 May 2021



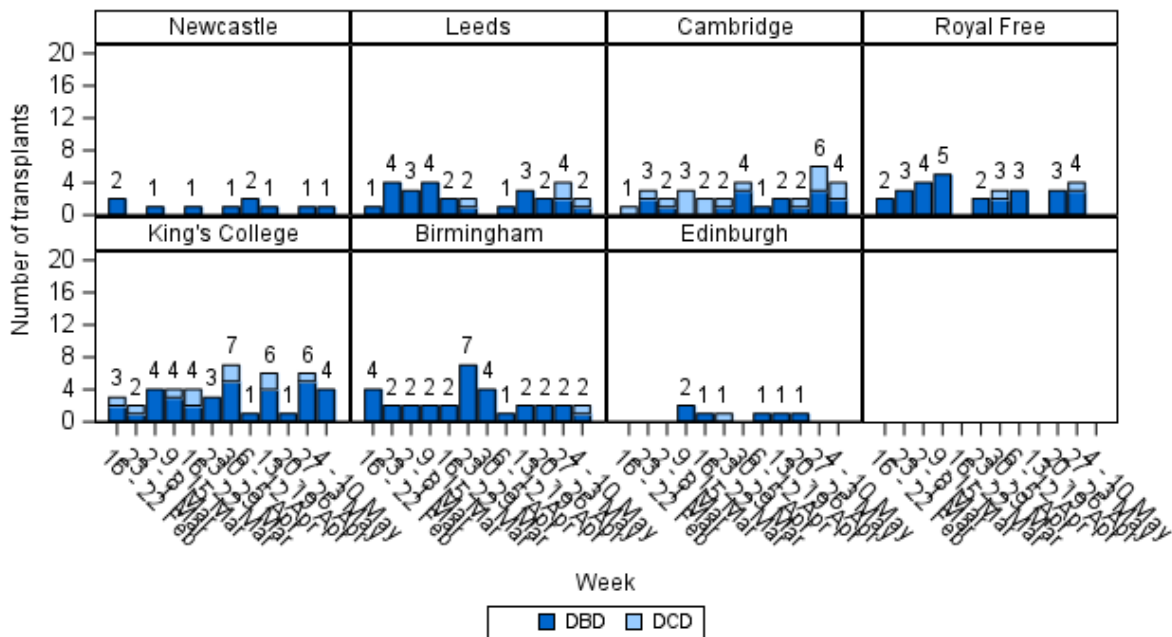
**Figure 2B** Number of livers from UK DCD donors offered, retrieved and transplanted, 4 February 2020 to 10 May 2021



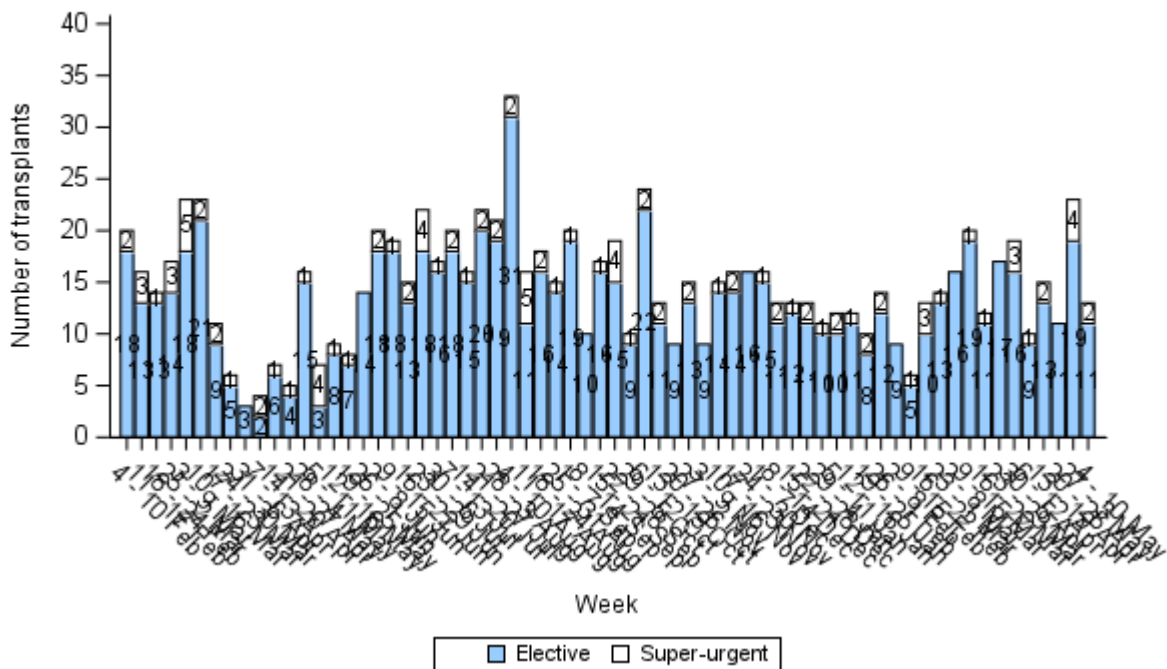
**Figure 3** Number of deceased donor liver transplants performed in the UK, by donor type, 4 February 2020 to 10 May 2021



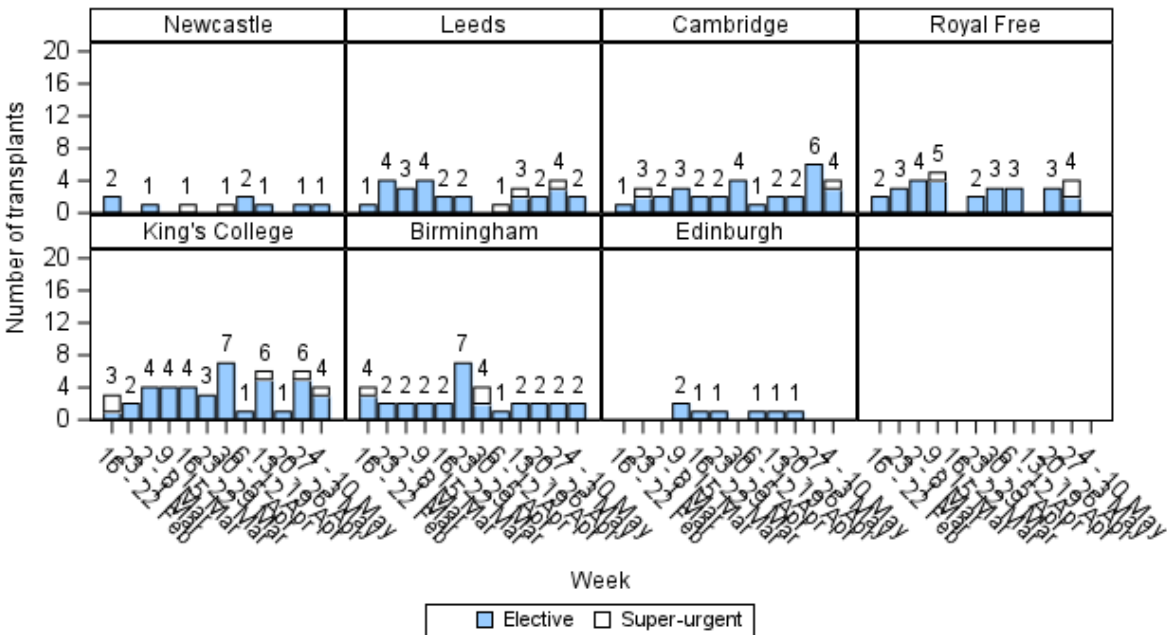
**Figure 4A** Number of deceased donor liver transplants performed in the UK, by transplant centre and donor type, 16 February 2021 to 10 May 2021



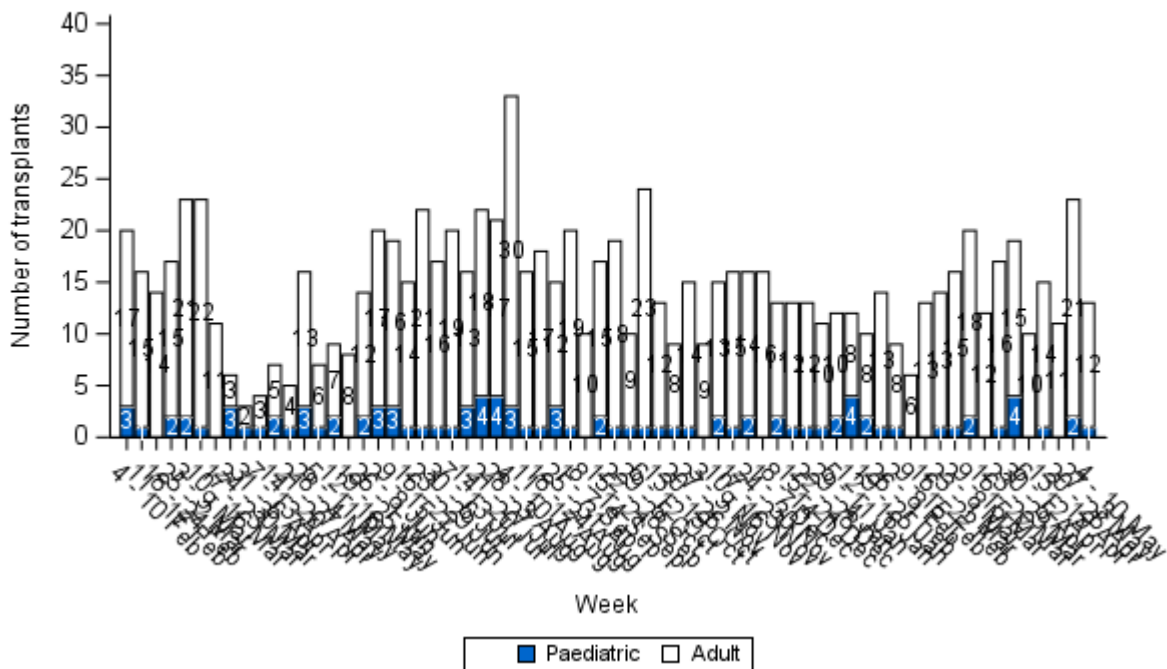
**Figure 5** Number of deceased donor liver transplants performed in the UK, by urgency status, 4 February 2020 to 10 May 2021



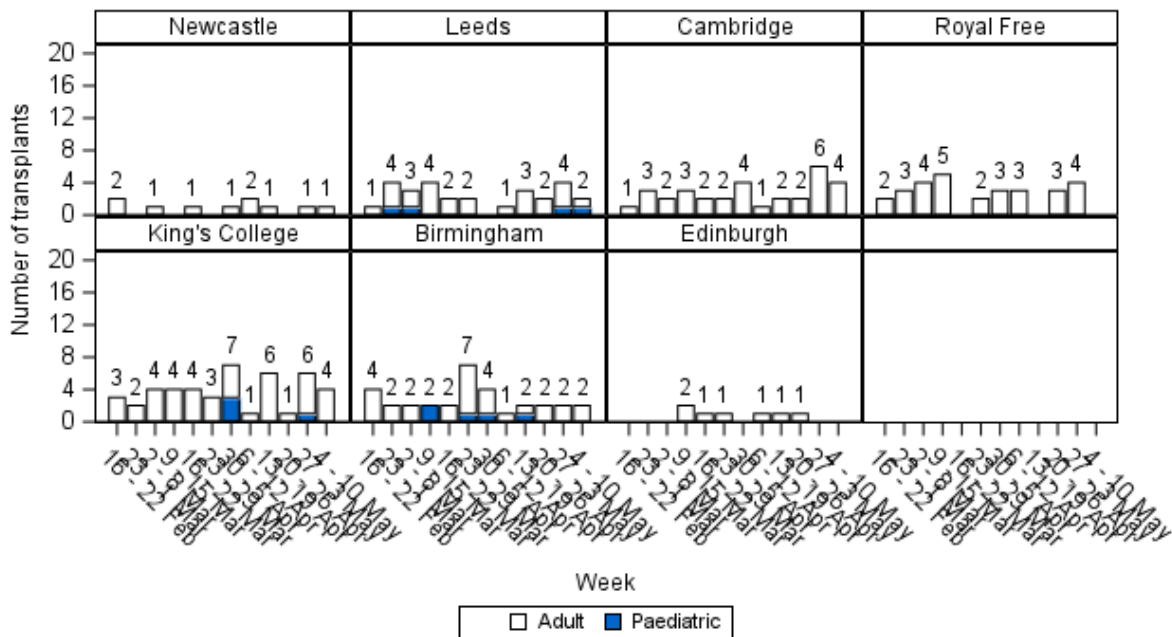
**Figure 6A** Number of deceased donor liver transplants performed in the UK, by transplant centre and urgency status, 16 February 2021 to 10 May 2021

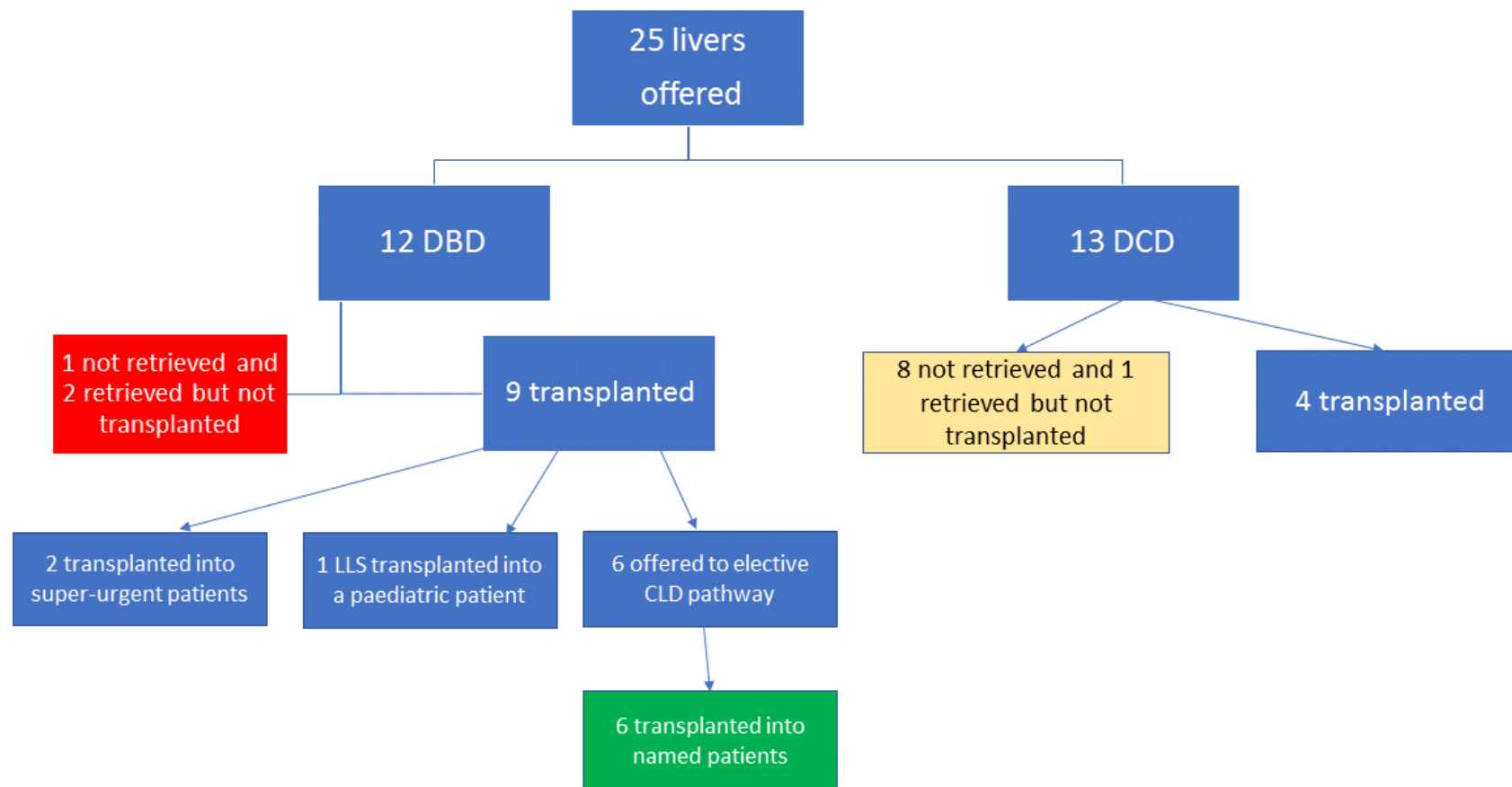


**Figure 7** Number of deceased donor liver transplants performed in the UK, by age group, 4 February 2020 to 10 May 2021



**Figure 8A** Number of deceased donor liver transplants performed in the UK, by transplant centre and age group, 16 February 2021 to 10 May 2021



Liver offering outcomes 4<sup>th</sup> May – 10<sup>th</sup> May 2021

## DBD Offering

<b>Table 1 Summary of back-up offering for DBD livers between 3 November 2020 and 10 May 2021</b>							
	<i>Number of offers</i>	<i>Number of back-up offers made</i>		<i>Number of back-up offers resulted in transplant</i>		<i>Number of back-up offers transplanted into original centre</i>	
	<b>N</b>	<b>N</b>	<b>%</b>	<b>N</b>	<b>%</b>	<b>N</b>	<b>%</b>
3 November – 9 November 2020	15	1	7	0	-	0	-
10 November – 16 November 2020	22	9	41	7	78	4	57
17 November – 23 November 2020	22	7	32	6	86	3	50
24 November – 30 November 2020	15	1	7	1	100	1	100
1 December – 7 December 2020	22	6	27	3	50	2	67
8 December – 14 December 2020	13	2	15	1	50	0	-
15 December – 21 December 2020	13	1	8	1	100	0	-
22 December – 28 December 2020	11	4	36	4	100	2	50
29 December – 4 January 2021	9	2	22	1	50	1	100
5 January – 11 January 2021	15	5	33	4	80	3	75
12 January – 18 January 2021	13	3	23	3	100	1	33
19 January – 25 January 2021	12	0	-	0	-	0	-
26 January – 1 February 2021	15	4	27	4	100	4	100
2 February – 8 February 2021	9	1	13	0	-	0	-
9 February – 15 February 2021	13	1	8	1	100	0	-
16 February – 22 February 2021	11	1	9	1	100	1	100
23 February – 1 March 2021	16	3	19	3	100	3	100
2 March – 8 March 2021	16	1	6	1	100	0	-
9 March – 15 March 2021	21	1	5	1	100	1	100
16 March – 22 March 2021	13	2	15	2	100	1	50
23 March – 29 March 2021	21	1	5	1	100	1	100
20 March – 5 April 2021	17	1	6	1	100	1	100
6 April – 12 April 2021	16	3	19	2	67	2	100
13 April – 19 April 2021	20	0	-	0	-	0	-
20 April – 26 April 2021	15	0	-	0	-	0	-
27 April – 3 May 2021	20	3	15	1	50	0	-
4 May – 10 May 2021	12	0	-	0	-	0	-
<b>Total</b>	<b>417</b>	<b>62</b>	<b>15</b>	<b>49</b>	<b>79</b>	<b>31</b>	<b>63</b>

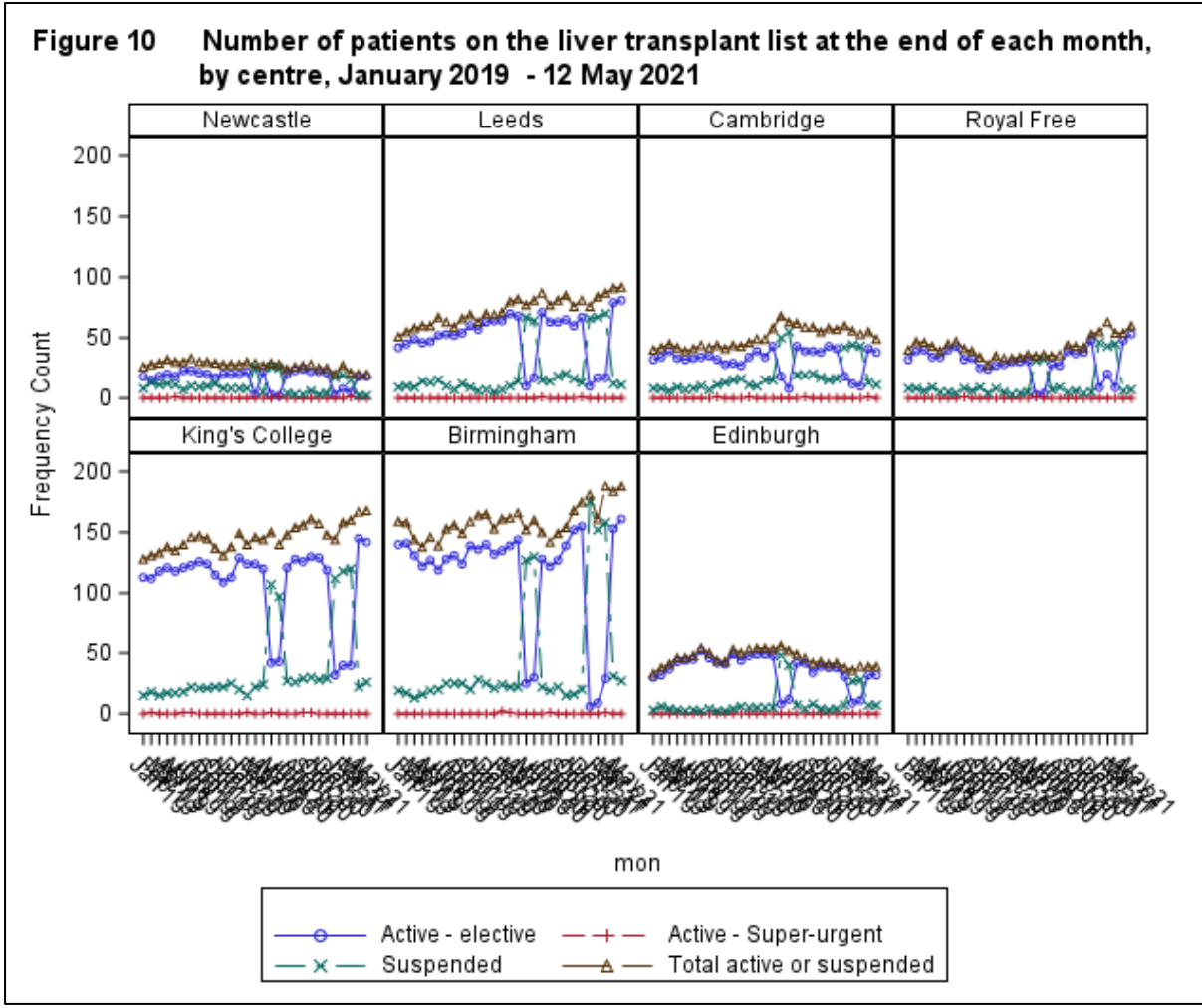
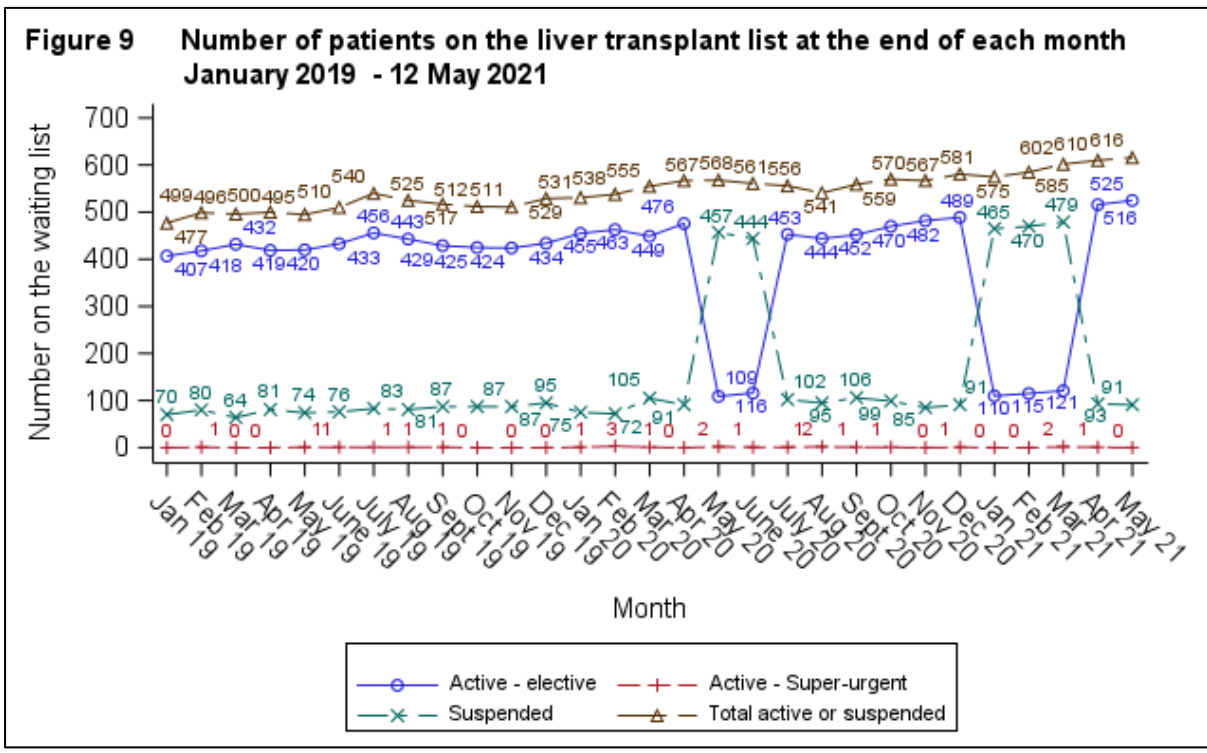
<b>Table 2 Summary of fast-track offering for DBD livers between 3 November 2020 and 10 May 2021</b>							
	<i>Number of offers</i>	<i>Number of livers fast-tracked</i>		<i>Number of fast-track offers after x-clamp</i>		<i>Number of fast-track offers resulted in transplant</i>	
	<b>N</b>	<b>N</b>	<b>%</b>	<b>N</b>	<b>% of fast-tracked</b>	<b>N</b>	<b>% of fast-tracked</b>
3 November – 9 November 2020	15	7	47	3	43	0	-
10 November – 16 November 2020	22	9	41	2	22	3	33
17 November – 23 November 2020	22	12	55	6	50	2	33
24 November – 30 November 2020	15	9	60	2	22	3	33
1 December – 7 December 2020	22	8	36	3	38	4	50
8 December – 14 December 2020	13	3	23	3	100	1	33
15 December – 21 December 2020	13	5	38	2	40	1	20
22 December – 28 December 2020	11	5	45	1	20	4	80
29 December – 4 January 2021	9	6	67	1	17	4	67
5 January – 11 January 2021	15	3	20	1	33	1	33
12 January – 18 January 2021	13	8	62	3	38	6	75
19 January – 25 January 2021	12	6	50	1	17	2	33
26 January – 1 February 2021	15	2	13	0	-	1	50
2 February – 8 February 2021	9	5	56	4	80	3	60
9 February – 15 February 2021	13	7	54	5	71	4	57
16 February – 22 February 2021	11	3	27	1	33	2	67
23 February – 1 March 2021	16	4	25	0	-	3	75
2 March – 8 March 2021	16	9	56	4	44	6	67
9 March – 15 March 2021	21	9	43	3	33	5	56
16 March – 22 March 2021	13	7	54	5	71	2	29
23 March – 29 March 2021	21	10	48	5	50	3	30
20 March – 5 April 2021	17	6	35	1	17	2	33
6 April – 12 April 2021	16	6	38	3	50	2	33
13 April – 19 April 2021	20	8	40	6	75	1	13
20 April – 26 April 2021	15	7	47	4	67	2	33
27 April – 3 May 2021	20	5	25	1	20	2	40
4 May – 10 May 2021	12	2	17	1	50	0	-
<b>Total</b>	<b>417</b>	<b>171</b>	<b>41</b>	<b>71</b>	<b>42</b>	<b>69</b>	<b>40</b>



## DCD Offering

<b>Table 4 Summary of back-up offering for DCD livers between 3 November 2020 and 10 May 2021</b>							
	<i>Number of offers</i>	<i>Number of back-up offers made</i>		<i>Number of back-up offers resulted in transplant</i>		<i>Number of back-up offers transplanted into original centre</i>	
	<b>N</b>	<b>N</b>	<b>%</b>	<b>N</b>	<b>%</b>	<b>N</b>	<b>%</b>
3 November – 9 November 2020	12	0	-	0	-	0	-
10 November – 16 November 2020	15	0	-	0	-	0	-
17 November – 23 November 2020	11	1	9	0	-	0	-
24 November – 30 November 2020	14	3	21	1	33	1	100
1 December – 7 December 2020	20	1	5	0	-	0	-
8 December – 14 December 2020	12	0	-	0	-	0	-
15 December – 21 December 2020	14	1	7	0	-	0	-
22 December – 28 December 2020	7	0	-	0	-	0	-
29 December – 4 January 2021	16	2	13	0	-	0	-
5 January – 11 January 2021	15	1	7	1	100	1	100
12 January – 18 January 2021	9	0	-	0	-	0	-
19 January – 25 January 2021	6	0	-	0	-	0	-
26 January – 1 February 2021	7	0	-	0	-	0	-
2 February – 8 February 2021	7	0	-	0	-	0	-
9 February – 15 February 2021	8	0	-	0	-	0	-
16 February – 22 February 2021	5	0	-	0	-	0	-
23 February – 1 March 2021	10	1	10	1	100	0	-
2 March – 8 March 2021	12	0	-	0	-	0	-
9 March – 15 March 2021	14	0	-	0	-	0	-
16 March – 22 March 2021	17	0	-	0	-	0	-
23 March – 29 March 2021	18	0	-	0	-	0	-
30 March – 5 April 2021	16	0	-	0	-	0	-
6 April – 12 April 2021	6	0	-	0	-	0	-
13 April – 19 April 2021	12	0	-	0	-	0	-
20 April – 26 April 2021	16	0	-	0	-	9	-
27 April – 3 May 2021	19	1	5	0	-	0	-
4 May – 10 May 2021	13	0	-	0	-	0	-
<b>Total</b>	<b>331</b>	<b>11</b>	<b>3</b>	<b>3</b>	<b>27</b>	<b>2</b>	<b>67</b>

<b>Table 5 Summary of fast-track offering for DCD livers between 3 November 2020 and 10 May 2021</b>							
	<i>Number of offers</i>	<i>Number of livers fast-tracked</i>		<i>Number of fast-track offers after x-clamp</i>		<i>Number of fast-track offers resulted in transplant</i>	
	<b>N</b>	<b>N</b>	<b>%</b>	<b>N</b>	<b>% of fast-tracked</b>	<b>N</b>	<b>% of fast-tracked</b>
3 November – 9 November 2020	12	7	58	0	-	0	-
10 November – 16 November 2020	15	9	60	1	11	2	22
17 November – 23 November 2020	11	10	91	0	-	1	10
24 November – 30 November 2020	14	11	79	0	-	1	9
1 December – 7 December 2020	20	16	80	0	-	1	5
8 December – 14 December 2020	12	7	58	0	-	1	14
15 December – 21 December 2020	14	7	50	0	-	0	-
22 December – 28 December 2020	7	4	57	1	25	0	-
29 December – 4 January 2021	16	15	94	1	7	2	13
5 January – 11 January 2021	15	14	93	1	7	0	-
12 January – 18 January 2021	9	8	89	0	-	0	-
19 January – 25 January 2021	6	6	100	0	-	0	-
26 January – 1 February 2021	7	5	71	0	-	0	-
2 February – 8 February 2021	7	6	86	0	-	0	-
9 February – 15 February 2021	8	6	75	1	17	0	-
16 February – 22 February 2021	5	3	60	1	33	1	33
23 February – 1 March 2021	10	5	50	0	-	1	20
2 March – 8 March 2021	12	10	83	1	10	0	-
9 March – 15 March 2021	14	8	57	2	25	1	13
16 March – 22 March 2021	17	13	77	4	31	1	8
23 March – 29 March 2021	18	15	83	0	-	1	7
30 March – 5 April 2021	16	15	94	3	20	3	20
6 April – 12 April 2021	6	5	83	0	-	0	-
13 April – 19 April 2021	12	12	100	5	42	2	17
20 April – 26 April 2021	16	14	88	2	14	0	-
27 April – 3 May 2021	19	14	74	0	-	3	21
4 May – 10 May 2021	13	8	62	1	13	0	-
<b>Total</b>	<b>331</b>	<b>253</b>	<b>76</b>	<b>24</b>	<b>9</b>	<b>21</b>	<b>8</b>



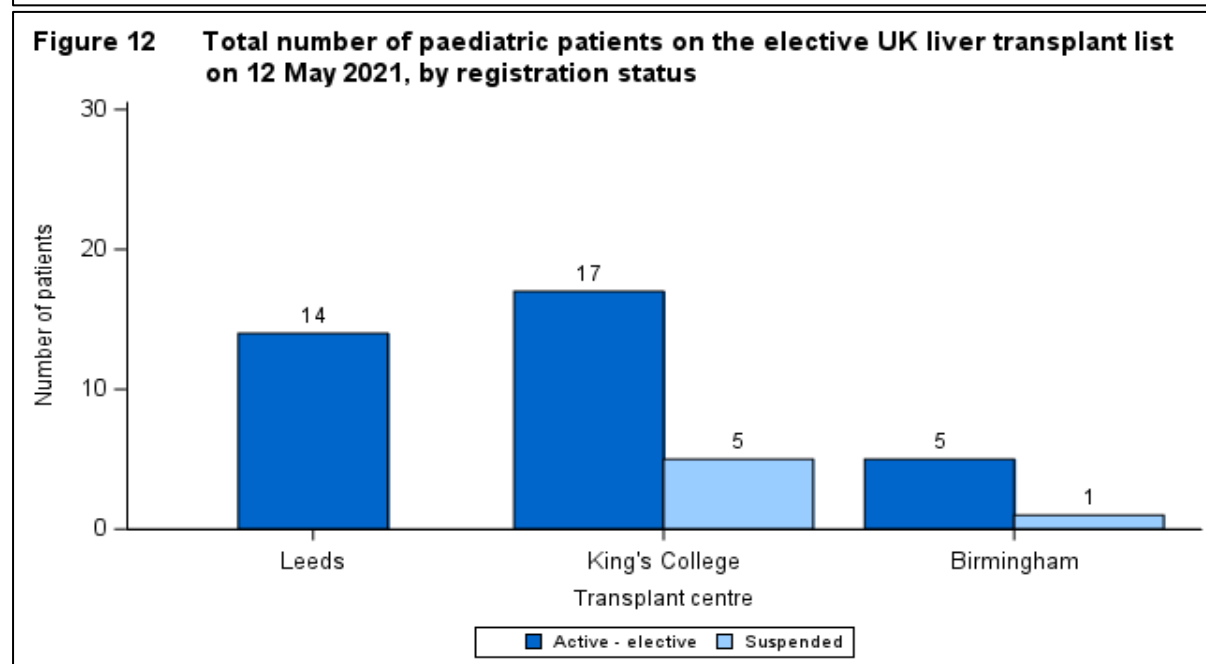
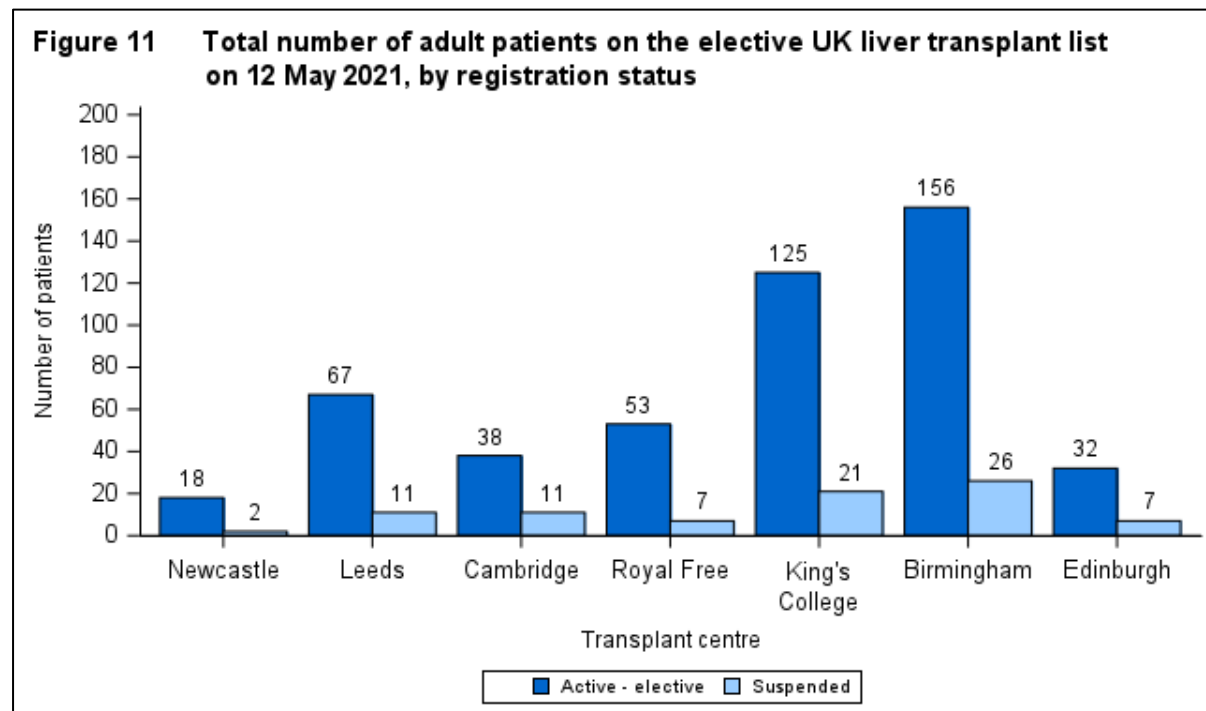
525 patients active on the UK elective liver list on 12 May 2021:

- 489 adult
- 36 paediatric

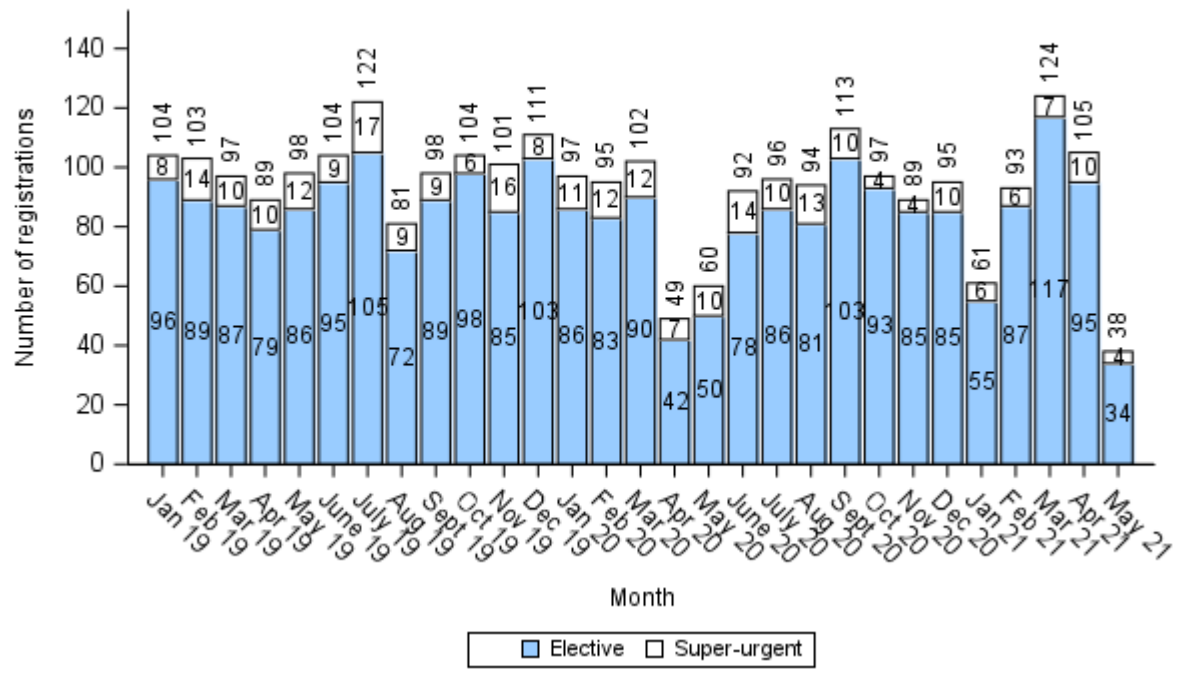
Zero patients currently active on the super-urgent list

Additional 21 patients currently active on intestinal list and 3 suspended

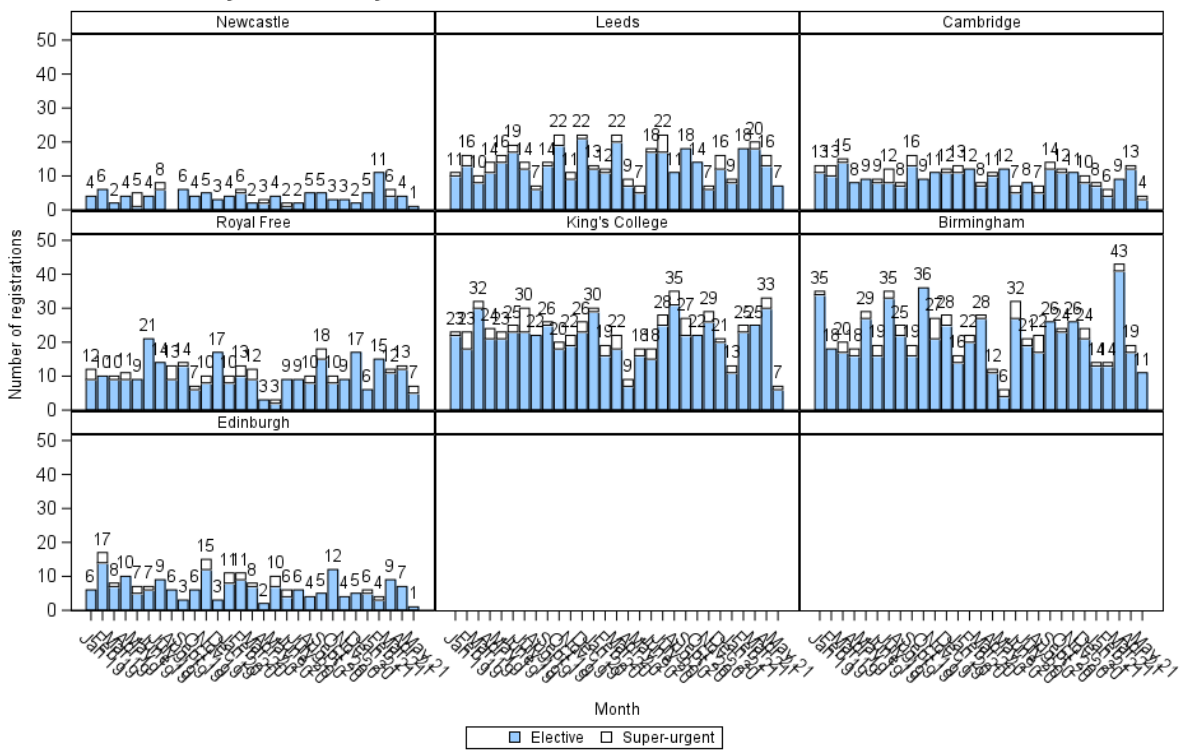
- 12 also require a liver (11 active and 1 suspended)



**Figure 13** Number of new registrations onto the UK liver transplant list, by urgency status, 1 January 2019 to 12 May 2021



**Figure 13A** Number of new registrations onto the UK liver transplant list, by transplant centre and urgency status, 1 January 2019 to 12 May 2021



**Figure 14 Number of registrations, deaths and removals by month since 1 January 2019**

