

## NHS BLOOD AND TRANSPLANT

## PANCREAS ADVISORY GROUP

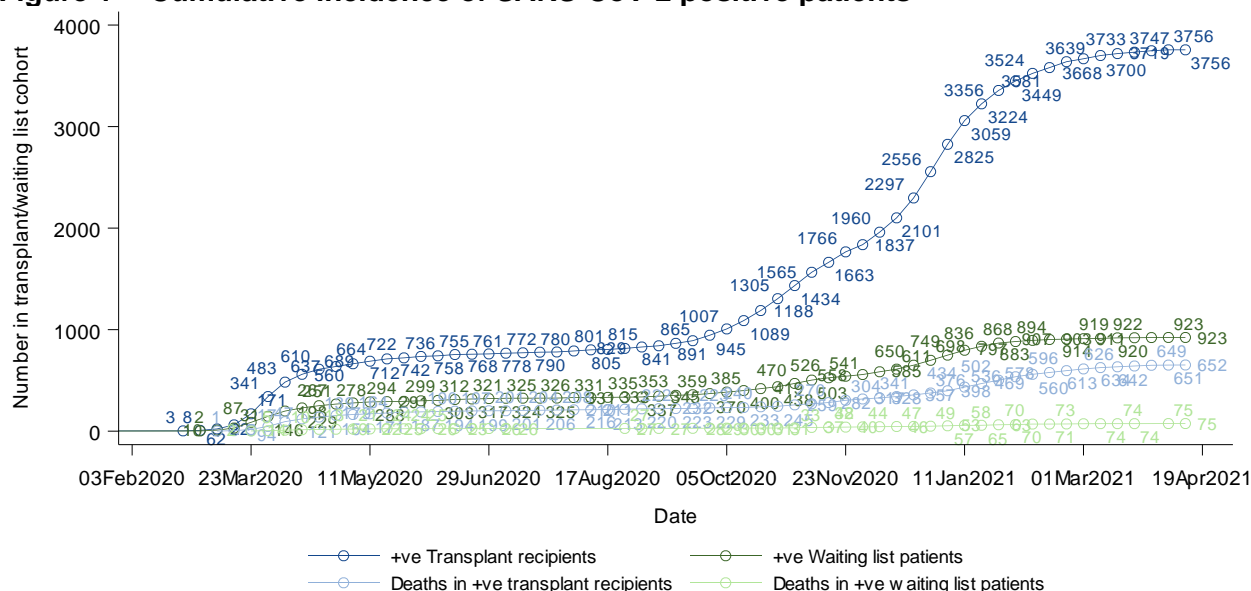
## SUMMARY COVID DATA AND PANCREAS SCHEME DATA

## INTRODUCTION

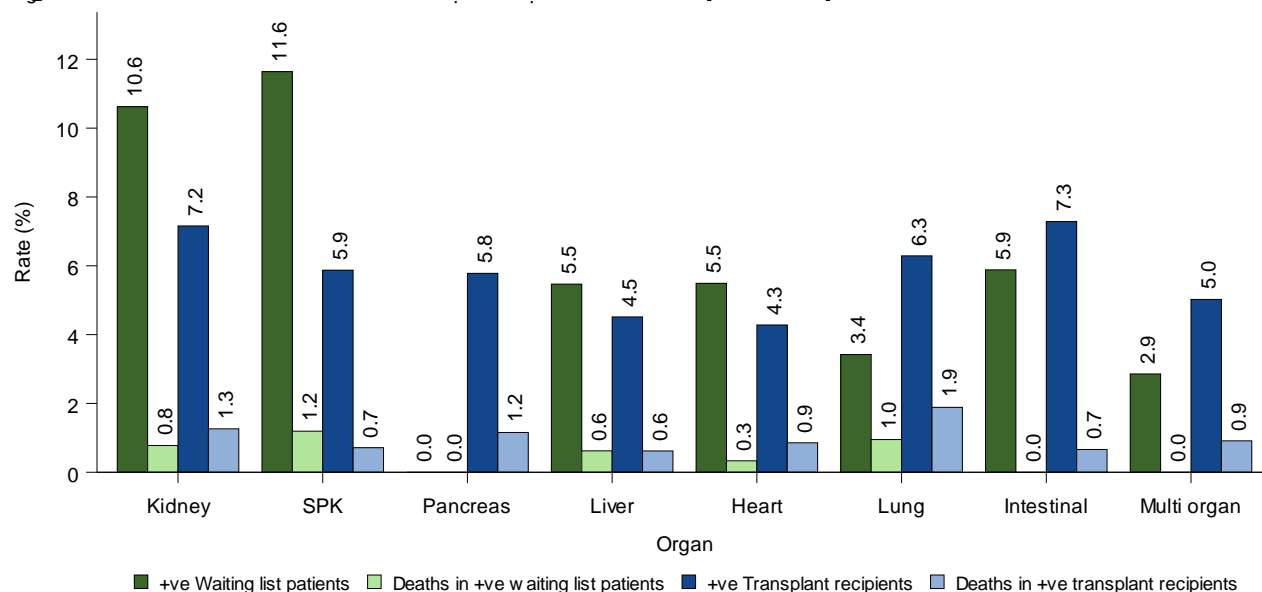
1. This paper combines information from the weekly report on SARS-CoV-2 cases in wait list and organ transplant patients, available on the ODT website [here](#) and the report on pancreas offering and transplants presented at the PAG COVID subgroup meetings.

## SUMMARY COVID DATA

2. The following information is an extract from the report for 1 March 2020 to 14 April 2021, published on 16 April 2021. **Figure 1** shows the cumulative incidence of SARS-CoV-2 positive patients and the cumulative deaths by week for transplant recipients and active wait listed patients since 3<sup>rd</sup> February 2020.

**Figure 1 Cumulative incidence of SARS-CoV-2 positive patients**

3. **Figure 2** shows the incidence and death rate of SARS-CoV-2 positive patients by organ group. Of 335 simultaneous pancreas kidney (SPK) waiting list patients, 11.6% were positive and four (1.2%) have died. Of 1822 SPK transplant recipients, with a functioning graft at 1 February 2020 or transplanted after this date, 5.9% were positive and 0.7% have died of SARS-CoV-2.
4. **Table 1** shows information for transplant recipients with a functioning graft and those testing positive, with demographic information for SPK patients. Of the 79 Black SPK recipients, 12.7% have tested positive compared with 11.9% of 101 Asian recipients and 5.2% of 1,603 white recipients.
5. **Table 2** shows information for patients on the active waiting list and demographic information for SPK patients. Of the 16 Black SPK patients, 31.3% have tested positive compared with 21.4% of 28 Asian patients and 8.5% of 282 white patients.

**Figure 2 Incidence and death of SARS-CoV-2 positive patients****Table 1 Transplant patients testing positive for SARS-Cov-2 data up to 14 April 2021**

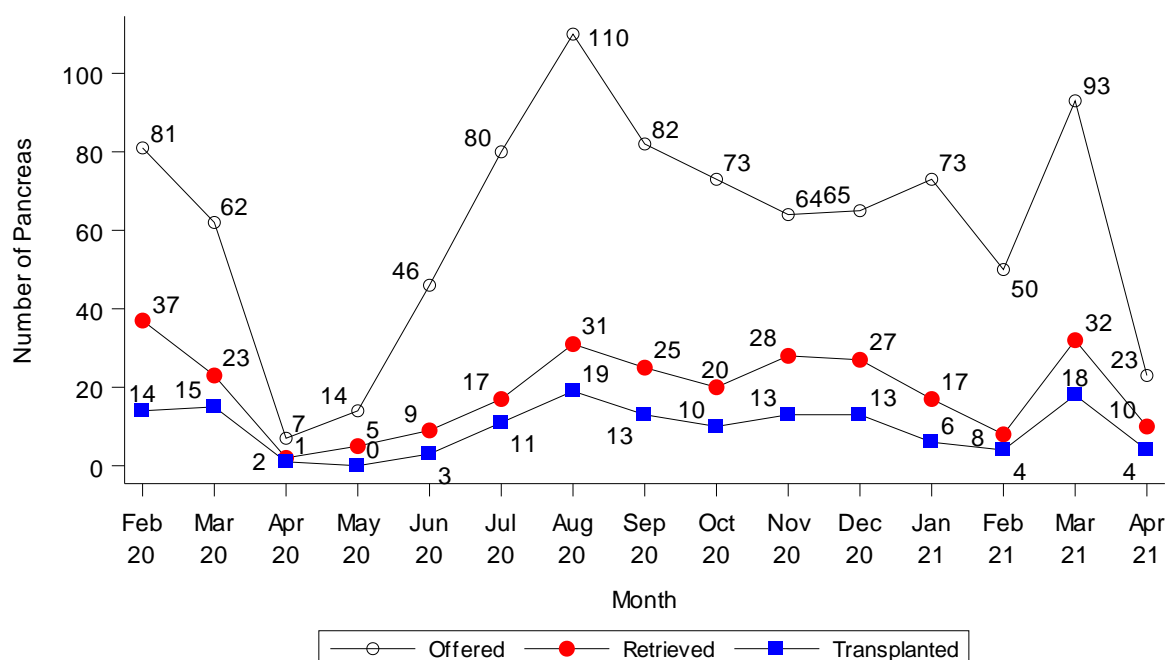
Factor	Level	Functioning graft		SARS-CoV-2 +ve cases			SARS-CoV-2 +ve deaths		
		N	%	N	%	% of functioning graft	N	% of cases	% of functioning graft
<b>Organ</b>	Kidney	40472	69.5	2897	77.1	7.2	511	17.6	1.3
	SPK	1822	3.1	107	2.8	5.9	13	12.1	0.7
	Pancreas	346	0.6	20	0.5	5.8	4	20.0	1.2
	Liver	10965	18.8	495	13.2	4.5	68	13.7	0.6
	Heart	2687	4.6	115	3.1	4.3	23	20.0	0.9
	Lung	1590	2.7	100	2.7	6.3	30	30.0	1.9
	Intestinal	151	0.3	11	0.3	7.3	1	9.1	0.7
	Multi organ	219	0.4	11	0.3	5.0	2	18.2	0.9
<b>SPK PATIENTS</b>									
<b>Sex</b>	Male	1059	58.1	65	60.7	6.1	9	13.8	0.8
	Female	763	41.9	42	39.3	5.5	4	9.5	0.5
<b>Ethnicity</b>	White	1603	88.0	83	77.6	5.2	8	9.6	0.5
	Asian	101	5.5	12	11.2	11.9	4	33.3	4.0
	Black	79	4.3	10	9.3	12.7	1	10.0	1.3
	Other	21	1.2	-	-	-	-	-	-
	Unknown	18	1.0	2	1.9	11.1	-	-	-
<b>Age</b>	18-29	36	2.0	1	0.9	2.8	-	-	-
	30-39	306	16.8	13	12.1	4.2	1	7.7	0.3
	40-49	605	33.2	31	29.0	5.1	2	6.5	0.3
	50-59	647	35.5	47	43.9	7.3	8	17.0	1.2
	60-69	213	11.7	13	12.1	6.1	-	-	-
	>70	15	0.8	2	1.9	13.3	2	100.0	13.3
<b>Year of tx</b>	<=2015	1118	61.4	59	55.1	5.3	8	13.6	0.7
	2016	123	6.8	6	5.6	4.9	1	16.7	0.8
	2017	147	8.1	12	11.2	8.2	1	8.3	0.7
	2018	159	8.7	10	9.3	6.3	1	10.0	0.6
	2019	150	8.2	10	9.3	6.7	-	-	-
	2020	98	5.4	8	7.5	8.2	2	25.0	2.0
	2021	27	1.5	2	1.9	7.4	-	-	-

<b>Table 2 Active patients on the waiting list testing positive for SARS-Cov-2 data up to 14 April 2021</b>									
<b>Factor</b>	<b>Level</b>	<b>Active on waiting list</b>		<b>SARS-CoV-2 +ve cases</b>			<b>SARS-CoV-2 +ve deaths</b>		
		<b>N</b>	<b>%</b>	<b>N</b>	<b>%</b>	<b>% of waiting list</b>	<b>N</b>	<b>% of cases</b>	<b>% of waiting list</b>
<b>Organ</b>	Kidney	7079	70.3	752	81.5	10.6	55	7.3	0.8
	SPK	335	3.3	39	4.2	11.6	4	10.3	1.2
	Pancreas	32	0.3	-	-	-	-	-	-
	Liver	1445	14.3	79	8.6	5.5	9	11.4	0.6
	Heart	601	6.0	33	3.6	5.5	2	6.1	0.3
	Lung	526	5.2	18	2.0	3.4	5	27.8	1.0
	Intestinal	17	0.2	1	0.1	5.9	-	-	-
	Multi organ	35	0.3	1	0.1	2.9	-	-	-
<b>SPK PATIENTS</b>									
<b>Sex</b>	Male	182	54.3	19	48.7	10.4	2	10.5	1.1
	Female	153	45.7	20	51.3	13.1	2	10.0	1.3
<b>Ethnicity</b>	White	282	84.2	24	61.5	8.5	2	8.3	0.7
	Asian	28	8.4	6	15.4	21.4	1	16.7	3.6
	Black	16	4.8	5	12.8	31.3	-	-	-
	Other	8	2.4	3	7.7	37.5	-	-	-
	Unknown	1	0.3	1	2.6	100.0	1	100.0	100.0
<b>Age</b>	0-17	1	0.3	1	2.6	100.0	-	-	-
	18-29	28	8.4	2	5.1	7.1	-	-	-
	30-39	116	34.6	13	33.3	11.2	1	7.7	0.9
	40-49	110	32.8	13	33.3	11.8	2	15.4	1.8
	50-59	75	22.4	10	25.6	13.3	1	10.0	1.3
	60-69	5	1.5	-	-	-	-	-	-
	>70	-	-	-	-	-	-	-	-

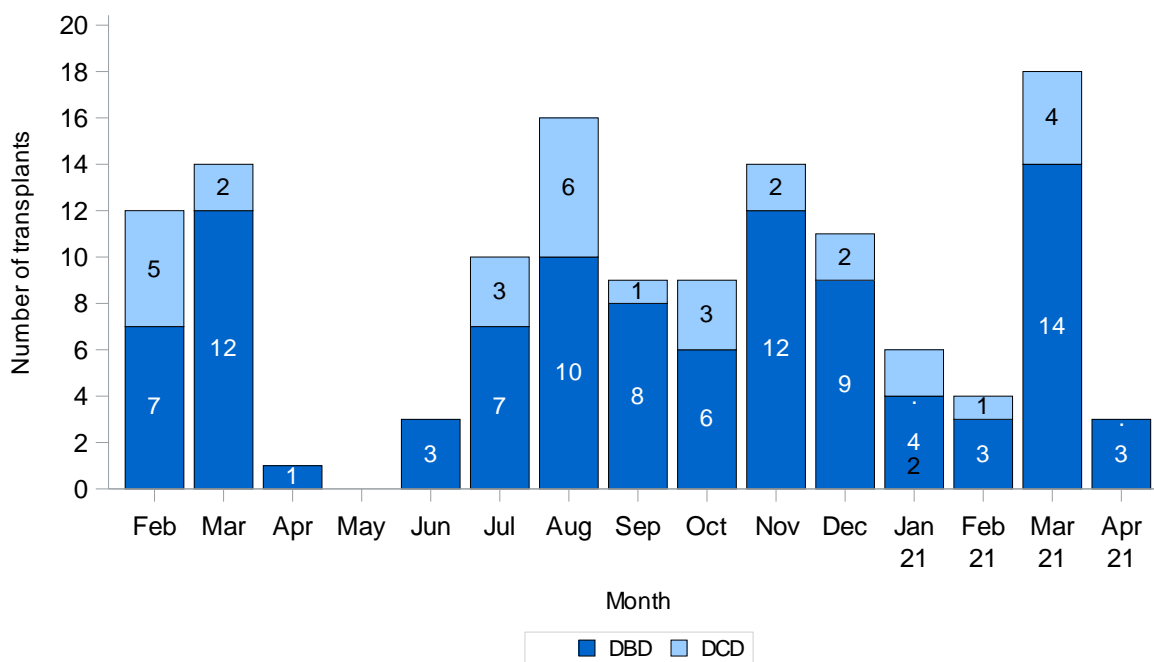
## PANCREAS SCHEME DATA

- The following information is an extract from the report for 1 February to 12 April 2021, produced on 13 April 2021. **Figure 3** shows, in March 2021, the pancreas offering activity back to usual levels with retrieval and transplant activity at rates previously seen in August 2020. **Figure 4** shows the number of pancreas and islet transplants performed per month by donor type.
- Figure 5** shows 192 patients on the waiting list by organ type and centre on 13 April 2021. **Figure 6** shows the number of new registrations on and deaths and removals from the transplant list. New registrations reached a peak of 33 in November 2020, similar to pre March 2020 levels although have fallen in the following months. The number of deaths and removals due to condition deteriorating have remained at similar levels throughout the period from January 2019 to April 2021.

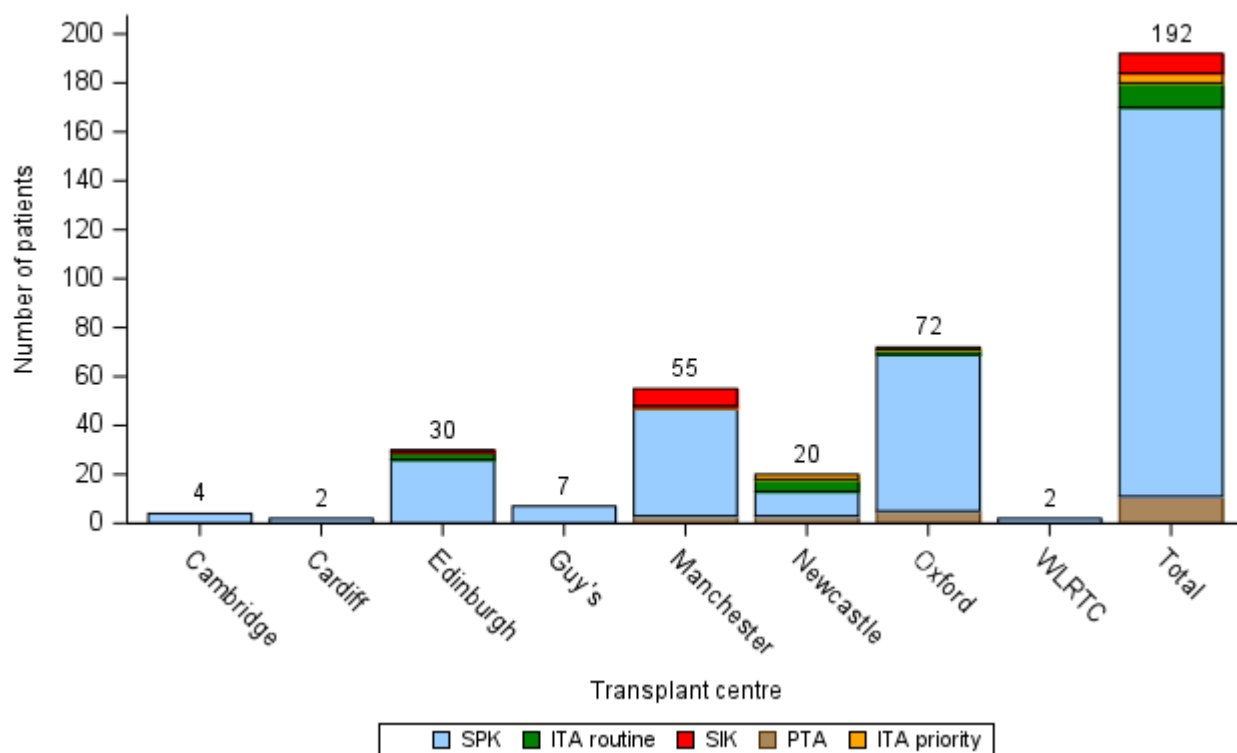
**Figure 3 Number of pancreases from UK deceased consented donors offered, retrieved and transplanted, 1 February 2020 to 13 April 2021**



**Figure 4 Number of deceased donor pancreas and islet transplants performed in the UK, by donor type, 1 February 2020 to 12 April**



**Figure 5** Number on pancreas and islet waiting list in the UK by centre and transplant type, as at 13 April 2021



**Figure 6** Number of registrations, deaths and removals by month for the pancreas and islet list, 1 January 2019 to 13 April 2021

