

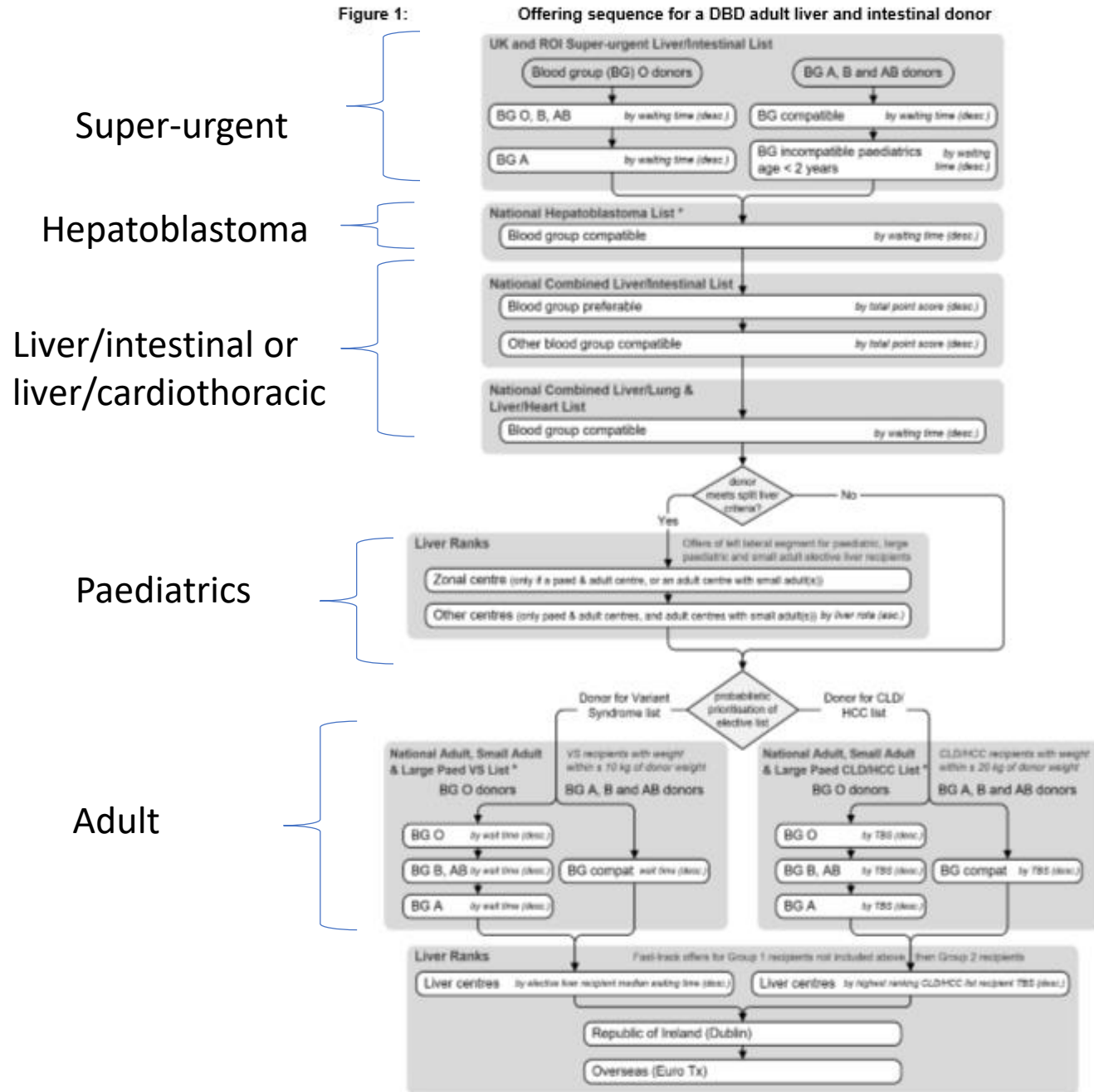
A thick, blue, wavy line that curves across the top of the slide, starting from the left edge and ending at the right edge.

Further refinements to the National Liver Offering Scheme – ACLF patient prioritisation

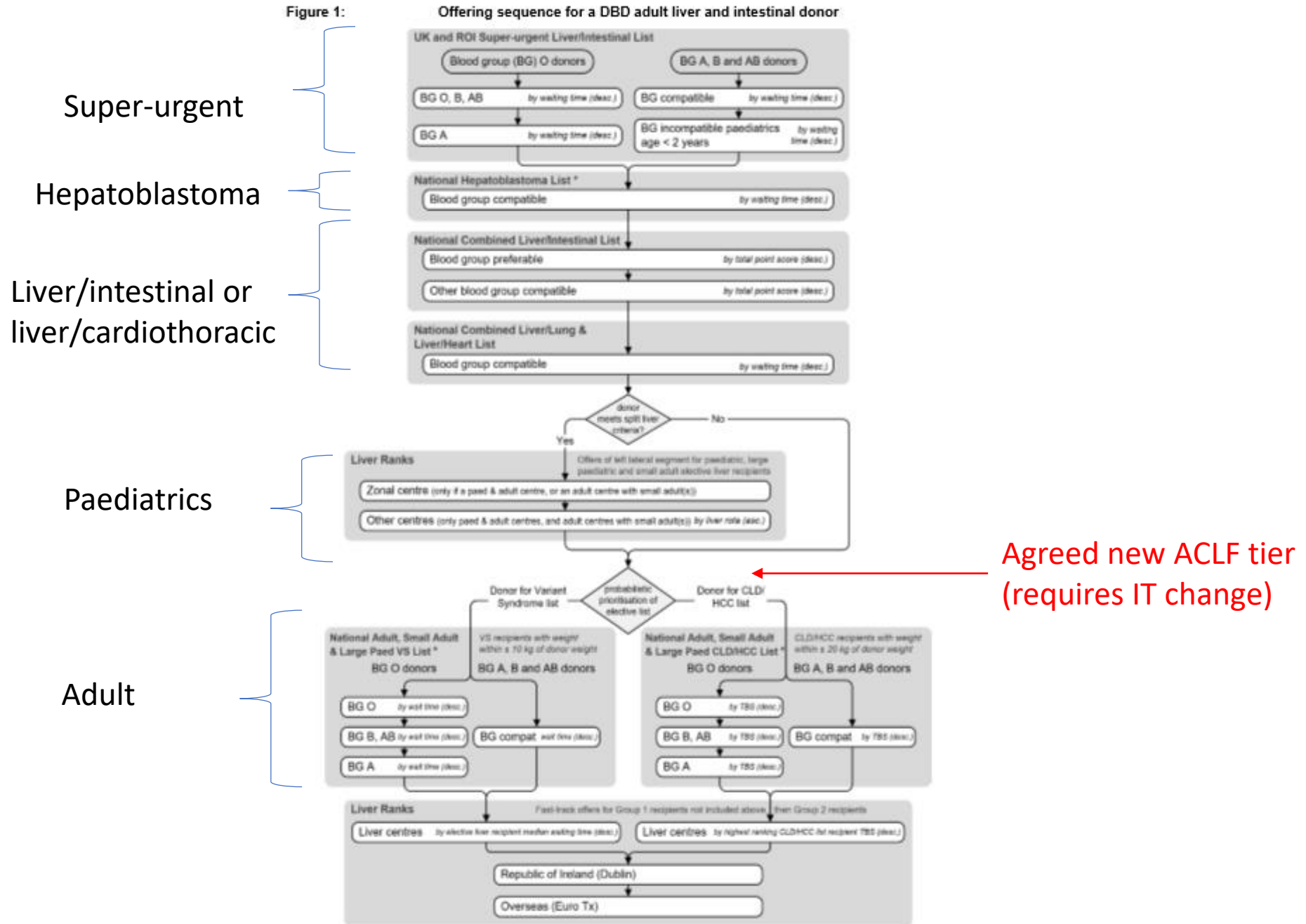
Rhiannon Taylor

- FTWU established to examine liver transplantation in chronically ill patients with cirrhosis (Acute on Chronic Liver Failure (ACLF))
- Recommendations received from the FTWU at November 2019 meeting
 - New tier in offering scheme recommended after paediatric offering
 - **REQUIRES IT CHANGE**
- How should ACLF patients be offered in the meantime?
 - Feedback received from centres when a transplant centre submitted a super-urgent appeal to register an ACLF patient

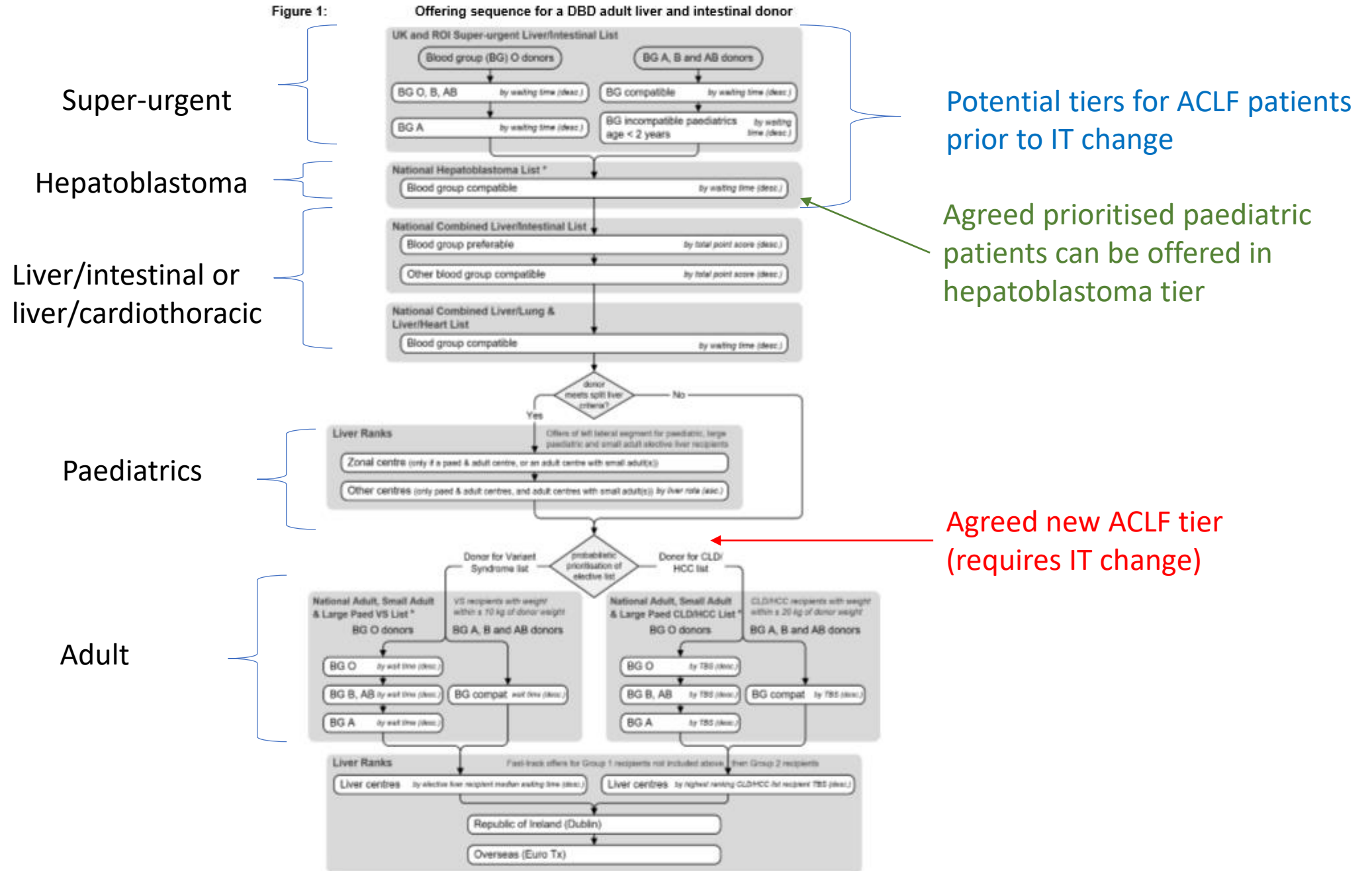
Current liver offering scheme – DBD adult liver and intestinal donor



Prioritisation of ACLF patients prior to IT change



Prioritisation of ACLF patients prior to IT change



ACLF patients prior to IT change

- Discussed at weekly COVID transplant centre telecon and Chair of FTWU
- Inappropriate to be super-urgently registered
- Agreed ACLF patients should be offered through hepatoblastoma tier
 - Similar to formally prioritised paediatric patients
 - Offered after genuine hepatoblastoma and prioritised paediatric patients
 - Prioritised by waiting time
- Patients registered prior to IT change will be included in service evaluation
 - Includes at least two patients previously super-urgently registered
- Initially will be registered for whole liver only
 - Will not appear for donors who meet split liver criteria
- Data collected by NHSBT currently being reviewed

ACLF patients prior to IT change

- Transplant centres should contact the Chair of the National Appeals Panel for agreement to prioritise the patient
- If agreed, patient should be registered with
 - Hepatoblastoma (444) as primary indication
 - Original primary indication as secondary indication
 - Other, please specify (498) as tertiary indication
 - ACLF added as freetext
 - Accept split liver recorded as No