

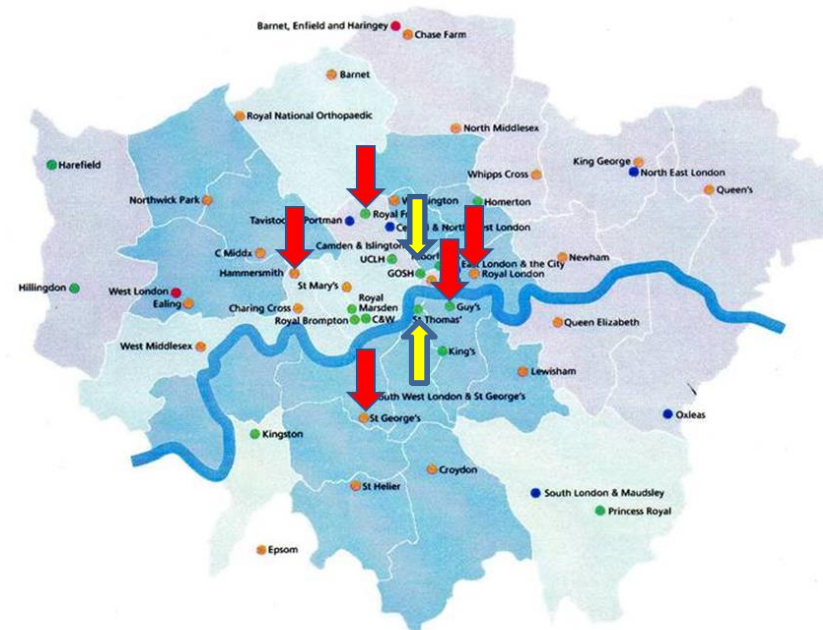
Navigating a pandemic: Transplant PLC

Dr Gareth Jones
Consultant Nephrologist
Clinical Lead for Transplant PLC

On behalf of the transplant units of:
Barts Health NHS Trust
Imperial College Healthcare NHS Trust
Royal Free London NHS Foundation Trust
Guy's and St Thomas' NHS Foundation Trust
St George's NHS Foundation Trust
Great Ormond Street Hospital for Children NHS Foundation Trust
Evelina London Children's Hospital

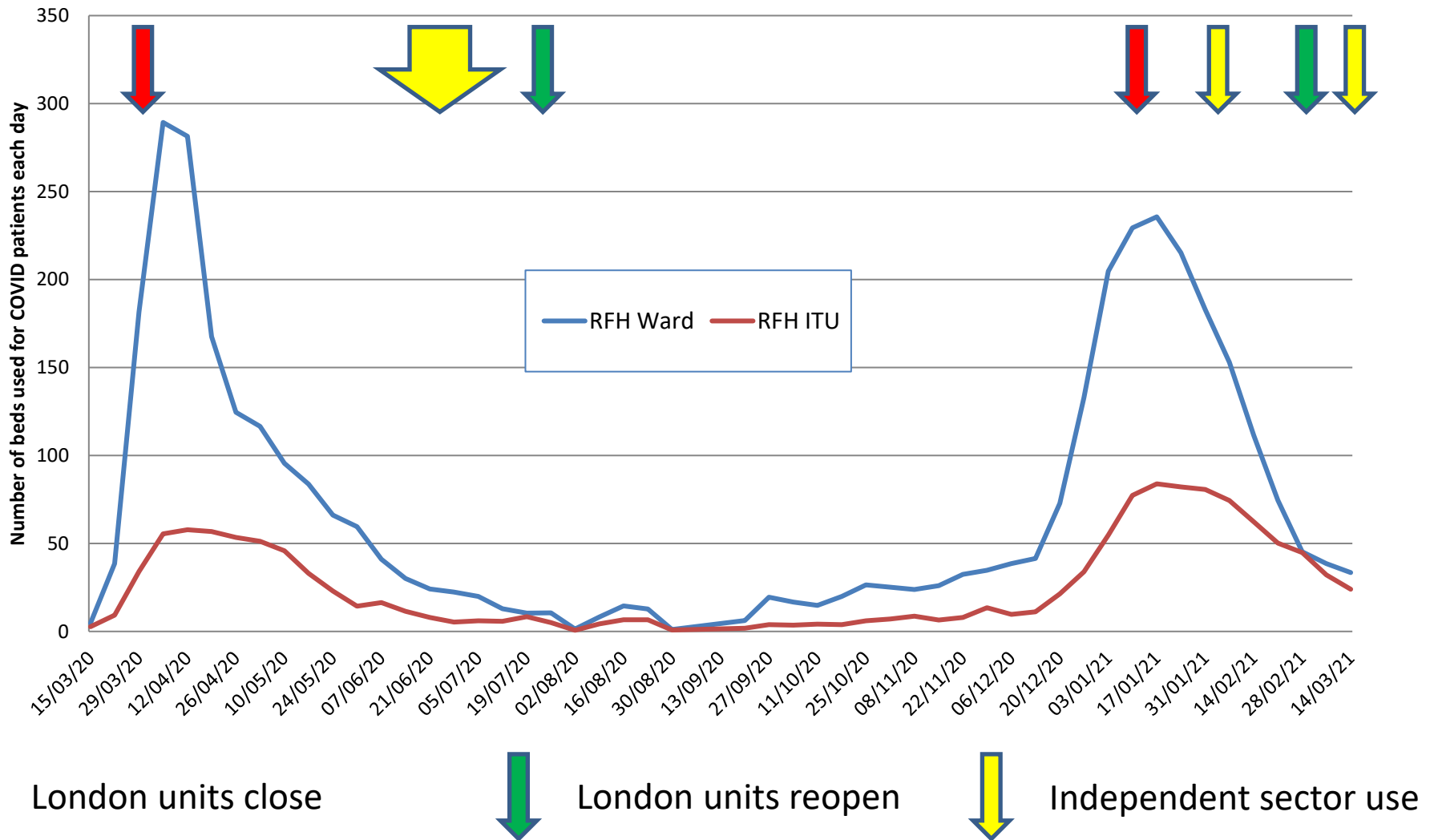
What is transplant PLC

- Collaborative of London Kidney Transplant units
 - 5 adult and 2 paediatric units
 - ~980 transplants/yr
 - ~1,500 waiting list
- Aim
 - Work collaboratively
 - Share resources/ideas
 - Improve outcomes
 - Improve capacity
 - Provide mutual aid
- Structure
 - Steering committee
 - Close working with networks/NHSE
 - Regular update meetings



What happened?

RFH average daily bed utilisation for COVID patients



How did we react ?

- Weekly situation report meetings
 - Steering committee (Surgeon and nephrologist)
 - Clinical Networks director
 - NHS London

Data driven decisions

Renal Network RRT Covid19 New Cases (by week)

A	B	C	D	E	F	G	H	I	J	K
Lc	London Kidney Networks & Transplant PLC									
	Transplant Second Surge Planning: weekly review and Early Warning									
	Objective for second surge: To maintain kidney transplant service in London and provide safe and equitable access to transplantation.					Transplant units				
						GSTT	SGUH	Hammersmith	RFH	Barts
						Jonny Olsburgh Dave Game	Abbas Ghazanfar Joyce Popoola	Frank Dor Michelle Willicombe	Gareth Jones Neal Banga	Ismail Mohamed Ravi Rajakariar
	Indicator	Response								
Program indicators	1	TX programme status	Open/limited/closed		Open	Open	Open	Open	Open	
	2	Waiting list management	Phase of activation (High, medium, low risk*)		medium	medium	medium	medium to high but no v high risk	medium	
	3	Mutual aid activated - patients out	None/organ sharing/staff sharing		none	none	none	yes 1 to Hamm	none	
	4	Mutual aid - patients received	Number		none	none	yes 1 from RF	none	none	
	5	Organ offer response	ECD&SCD/SCD only/none		ECD&SCD	ECD&SCD	ECD&SCD	ECD&SCD	ECD&SCD	
Staff and resource	6	Weekly transplants performed	Number performed Deceased + Live		2 DD + 0 LD	2 + 1	6 + 1	2 + 1	3 + 1	
	7	Theatre access	Unlimited/limited/no access		Unlimited	Unlimited	unlimited	Unlimited	unlimited	
	8	Staffing (Surgical, medical, nursing)	Impact of staff availability (None/minor/major)		none	none	none	none	none	
Other comments	9	Bed availability for transplantation	Plenty/restricted/none		Plenty	Plenty	restricted*	Plenty	Plenty	
	10	Post Tx Green Pathway	Yes / No / Greenish*		Yes	Yes	Greenish*	Yes	Yes	
	11	Recent Post Tx Infections								
NHSBT data	Offer organ decline rate	Source: NHS BT Covid-19 Cases to Nov 2020 Report (Data to Oct)		56%	75%	83%	74%	75%		
Local Intelligence	Weekly reported activity									
	Percentage active on list~	NHSBT Kidney WL and Tx Activity, February - October 2020 (as of 1 Oct)		Oct 18.7 (Feb 46.2)	26.7 (67.6)	51.8 (62.1)	50.3 (66.9)	32.6 (69.3)		
	Community rates	South London & North London		Decreasing	Decreasing	Decreasing	Decreasing	Decreasing		
	New RRT cases Last Week/Week Before	Source: Renal Registry : New RRT Cases Last Week / Week Before		LW=1 WB=5	LW=1 WB=1	LW=3 WB=3	LW=1 WB=1	LW=0 WB=5		
	Overall assessment			No major issues / concerns	No major issues / concerns	No major issues / concerns	No major issues / concerns	No major issues / concerns		
	Agreed communication briefing for Renal Unit CDs and NHSE/ICS teams (to include risks/issues/decisions required)			All centres open for DCD and LD and actively transplanting. Discussed concerns over consistency of testing for staff. No action agreed or required at this stage.						

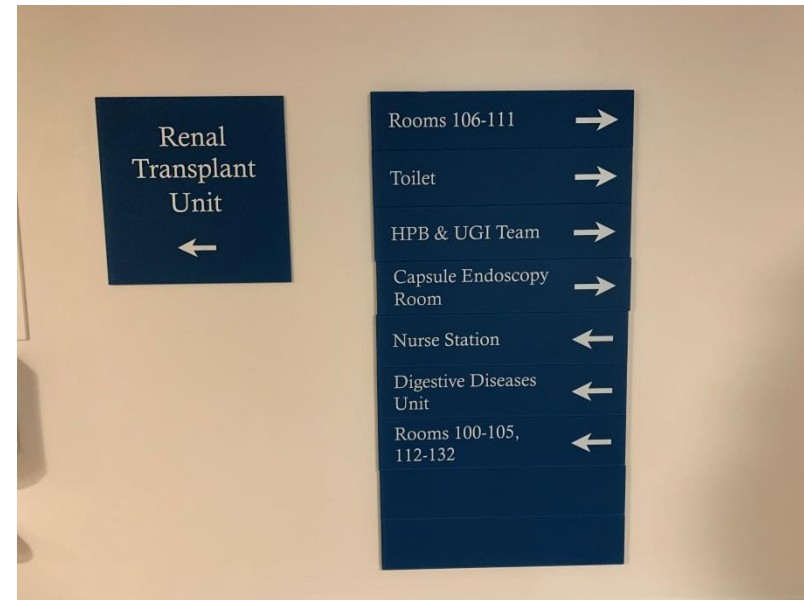
Hackney and City of London

How did we react ?

- Weekly situation report meetings
 - Steering committee (Surgeon and nephrologist)
 - Clinical Networks director
 - NHS London
- Enabled discussion on:
 - Restarting transplantation
 - Independent sector
 - Phased reactivation
 - Mutual aid
 - Infrastructure
 - Vaccination
 - Staffing

Live donor transplant at IS site

- Ask the patients
- Define the resource requirement
- Identify a site
- Map out the pathway and protocols
- Get permission
 - Clinical
 - Trust
 - Commissioning
- Extend the HTA license
- Get an agreement (MoU)
- Agree resource requirement
 - Staff from your own site
 - Out of hours cover (anaesthesia and radiology)



IS site utilisation

- Six out of seven London units
 - London bridge
 - RLH & GSTT → GOS/Evelina
 - The London Clinic
 - RFH & West London(St George's restarted - own site)
- Live donor transplants but:
 - Try to discharge
- COVID risk managed
 - Outpatients
 - Readmission
 - Diagnostics
 - Pharmacy



Infrastructure and Vaccination

- Infrastructure



- Vaccination

- Variability in access
- In centre vs community
- Person power to deliver
- Second dose timing
 - One or two
- Listing post dose
- Vaccine hesitancy

Kidney transplantation and patients who decline SARS-CoV-2 vaccination

Pan-London Transplant Collaborative Ethics Group

Refik Gökmen¹, Antonia Cronin^{1,2}, Wendy Brown³, Stephen Cass⁴, Abbas Ghazanfar⁴, Mohammad Ayaz Hossain⁵, Jenny Johnson³, Trish Longdon³, Sue Lyon¹, Adam McLean³, Reza Motallebzadeh⁵, Joyce Popoola⁴, Ayo Samuel³, Raj Thuraisingham⁶, Angela Wood³, Frank Dor^{3,7}

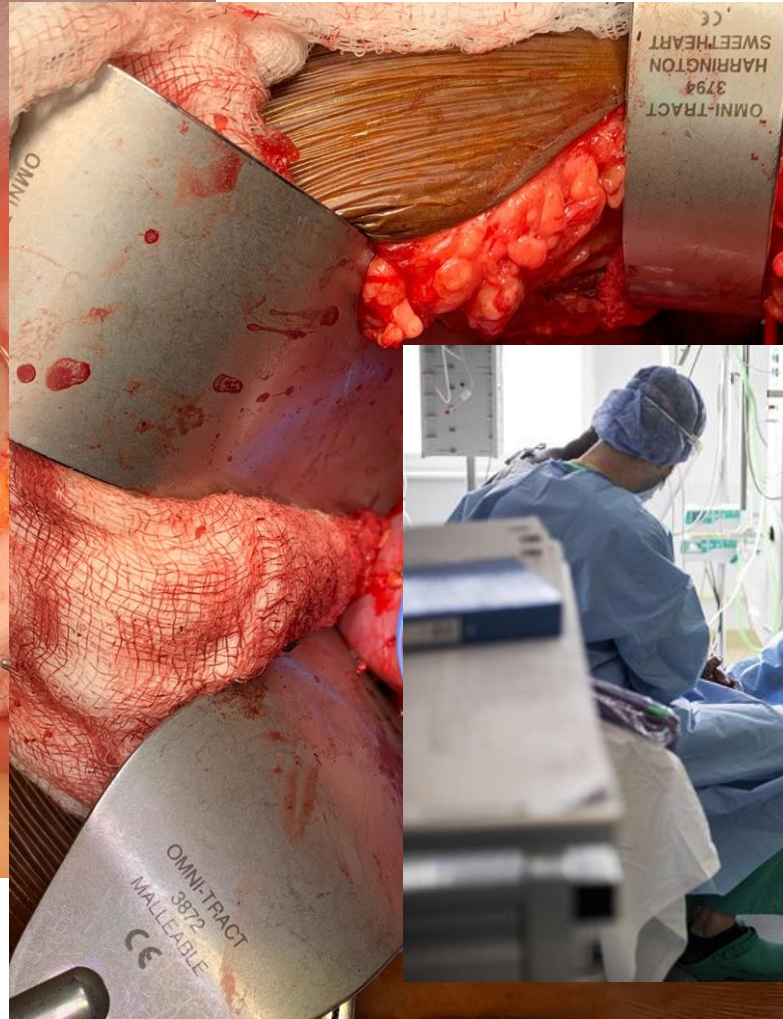
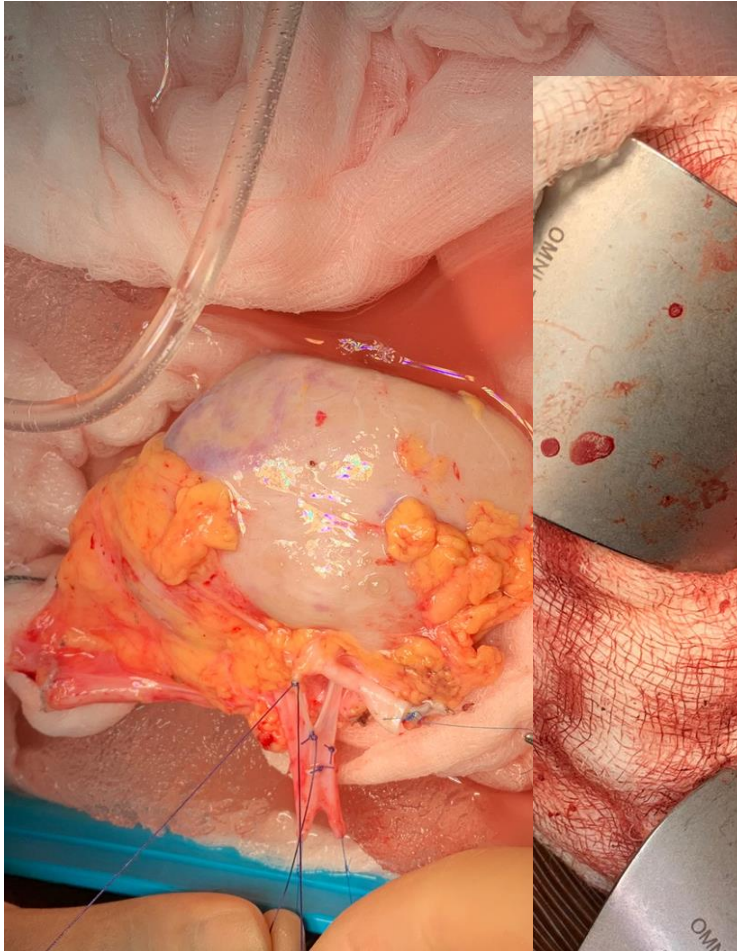
1. Guy's & St Thomas' NHS Foundation Trust; 2. King's College London; 3. Imperial College Healthcare NHS Trust; 4. St George's University Hospitals NHS Trust; 5. Royal Free London NHS Trust; 6. Barts Health NHS Trust; 7. Imperial College London.

1 March 2021

As the SARS-CoV-2 vaccines have started to be rolled out, one of the key ethical questions facing transplant units has been whether listing for transplantation should be contingent on potential transplant recipients having received the vaccine. This document aims to support transplant units in their approach to potential transplant candidates who are hesitant towards or decline vaccination.



Staffing





Tottenham Hale Kidney and Diabetes Centre

Thank You

*to All Healthcare Professionals and Workers
who came to help us during the Corona Virus Pandemic.
Your generous contribution of time and energy looking
after our patients was incredible.*

With sincere appreciation, 
The THDU Renal Team



Thank you!

- West London
 - Frank Dor
 - Michelle Willicombe
- St George's
 - Joyce Popoola
 - Abbas Ghazanfar
- Guy's & St Thomas'
 - Jonny Olsburgh
 - David Game
- Royal London
 - Ismail Mohammed
 - Ravi Rajakaria
- Royal Free
 - Neal Banga
- Great Ormond Street
 - Stephen Marks
- Evelina Children's Hospital
 - Caroline Booth
- London Kidney Networks
 - Stephen Cass
 - Peter Wilson
 - Angela Wood
- NHS E
 - Carrie Gardner
- NHS BT
 - John Forsythe
 - Rommel Ravanan