

**Length of the deceased organ donation and  
transplantation process**

**Six-monthly report**

**1 April 2012 - 31 March 2020**

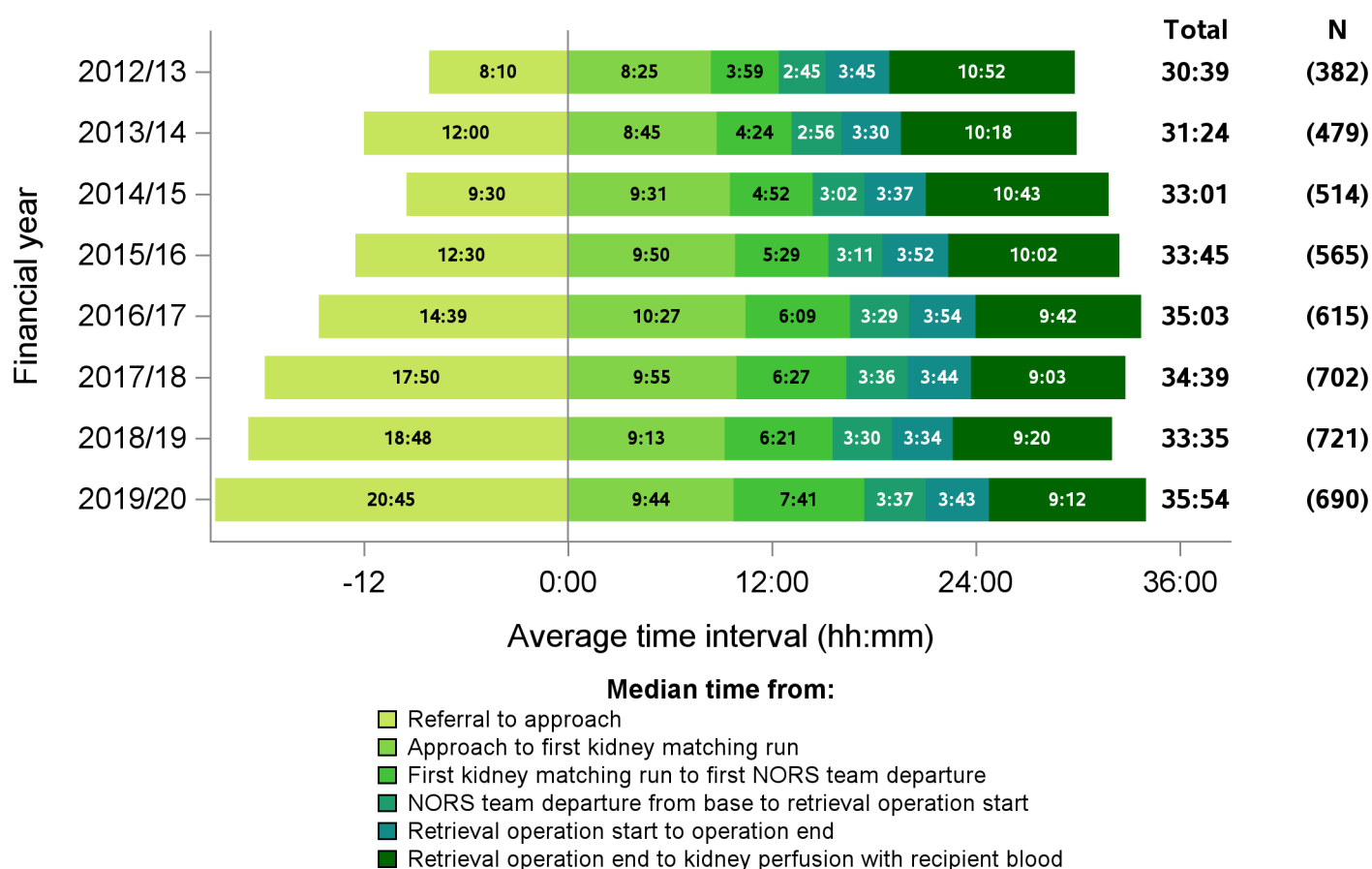
**Produced 29 October 2020**

**Statistics and Clinical Studies**



# Summary of UK activity

Figure 1 - Median times of DBD organ donation process, UK, 1 April 2012 - 31 March 2020

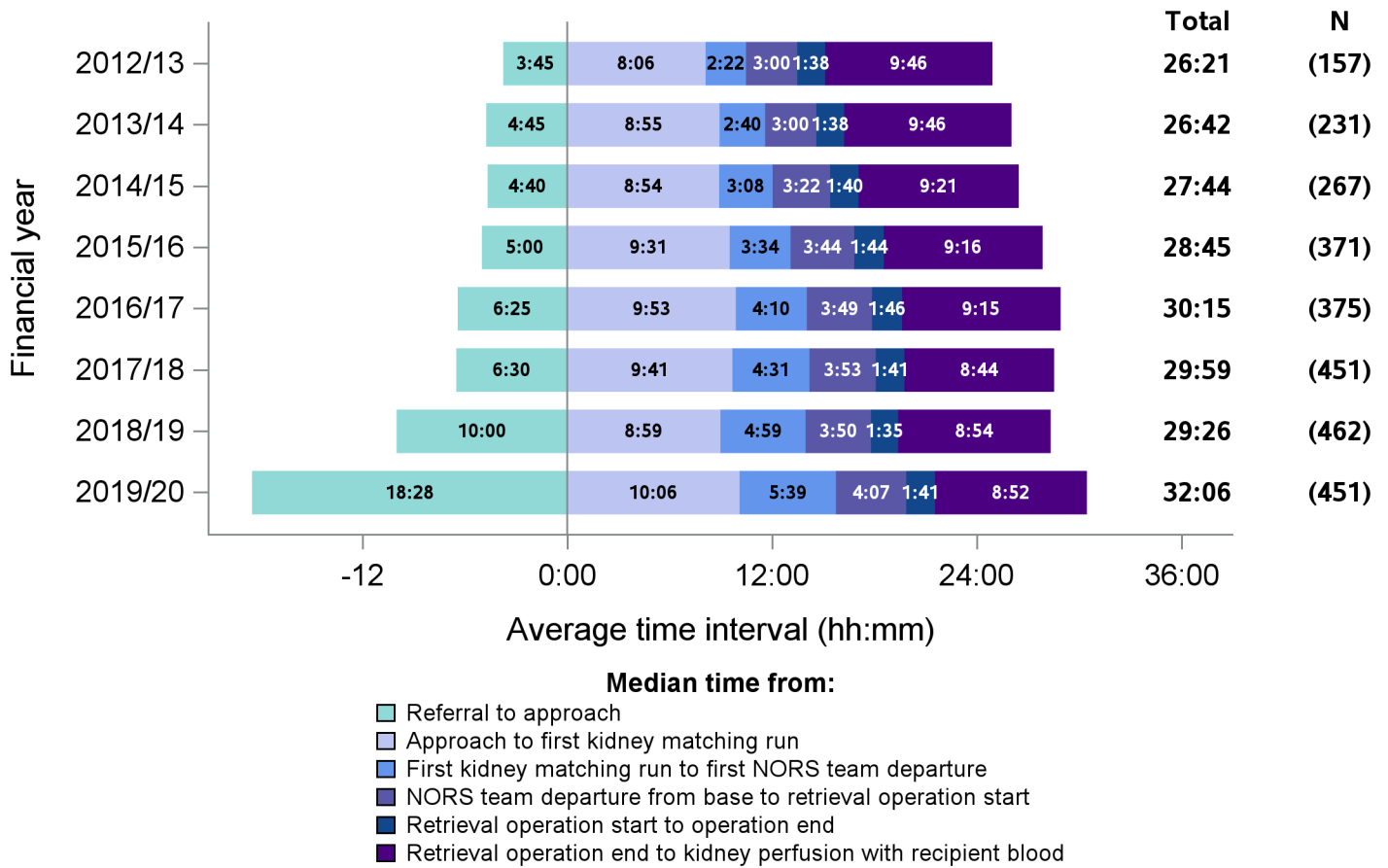


Time segment	Group with oversight responsibility
Referral to approach	National Organ Donation Committee
Approach to first kidney matching run	National Organ Donation Committee
First kidney matching run to first NORS team departure	ODT Hub
NORS team departure from base to retrieval operation start	Retrieval Advisory Group
Retrieval operation start to operation end	Retrieval Advisory Group
Retrieval operation end to kidney perfusion with recipient blood	Retrieval Advisory Group

It is important to note when interpreting all timings charts:

- To aid interpretation of the process following approach, time from referral to formal approach is presented before 0. This period is also excluded from the total median calculation
- If both a cardiothoracic and abdominal NORS team attend a donor; the earliest departure time is selected, and similarly the earliest retrieval operation start time
- The latest operation end time is selected, to signify the end of all donor surgery
- N values do not correspond to the number of donors each year, this is the number of patients for which all time values were available
- Total medians do not equal the sum of all medians calculated
- All timings charts are presented on the same scale to allow for comparison

Figure 2 - Median times of DCD organ donation process, UK, 1 April 2012 - 31 March 2020

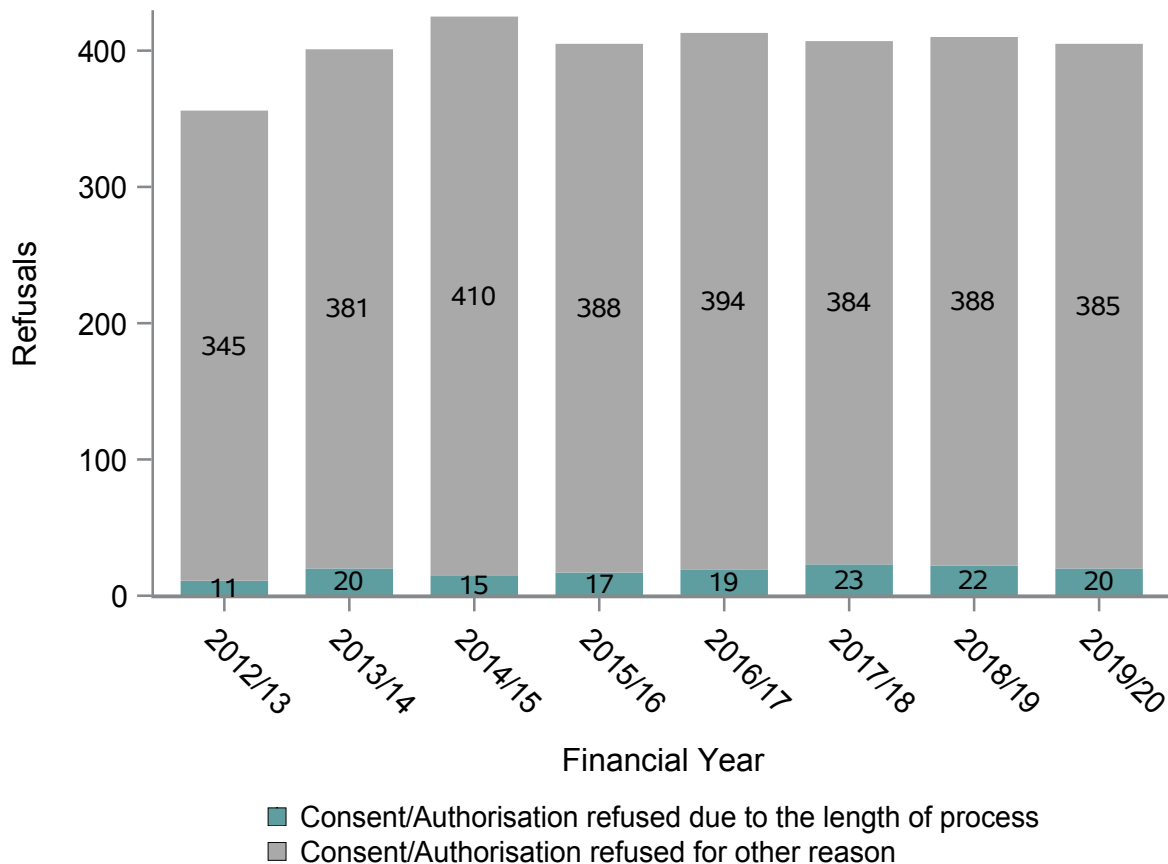


Time segment	Group with oversight responsibility
Referral to approach	National Organ Donation Committee
Approach to first kidney matching run	National Organ Donation Committee
First kidney matching run to first NORS team departure	ODT Hub
NORS team departure from base to retrieval operation start	Retrieval Advisory Group
Retrieval operation start to operation end	Retrieval Advisory Group
Retrieval operation end to kidney perfusion with recipient blood	Retrieval Advisory Group

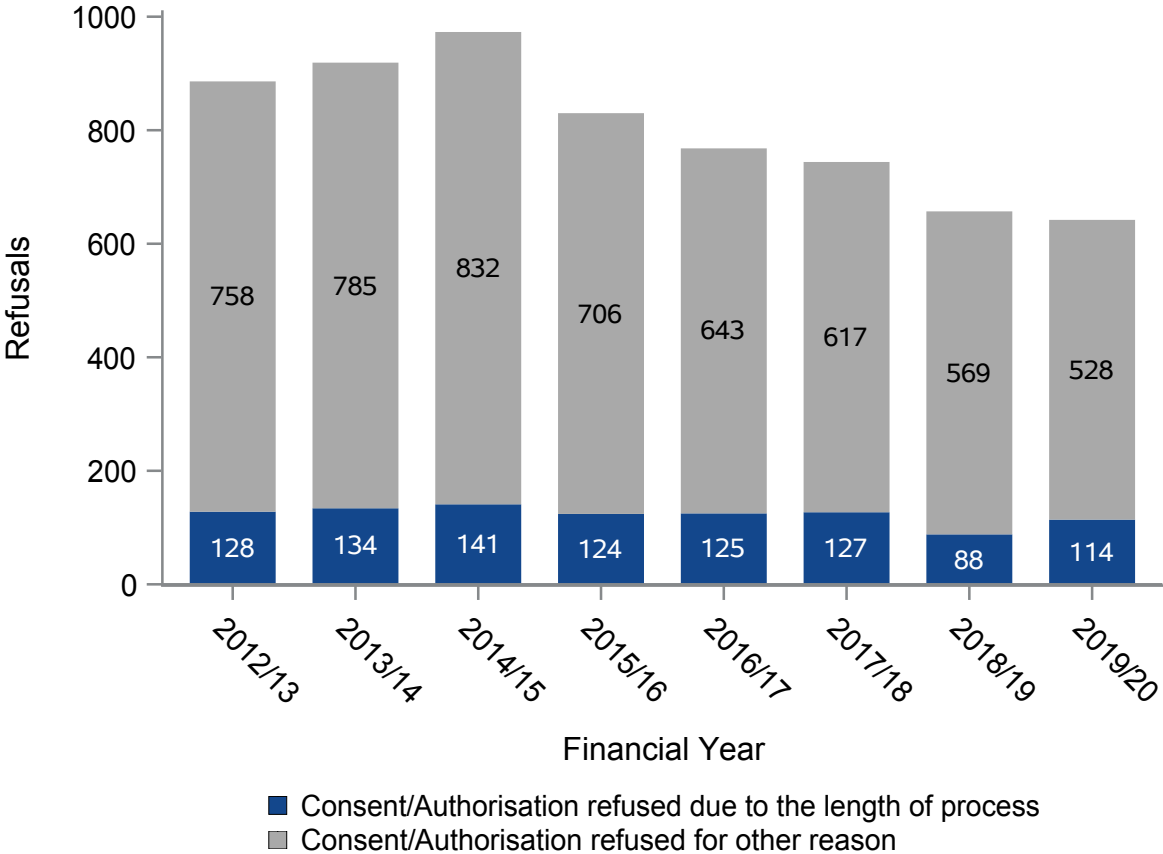
## Consent/authorisation not ascertained due to 'family felt the length of time for donation process was too long'

Table 1 Approaches and refusals in 2019/20						
Team name	Eligible DBD Donors			Eligible DCD Donors		
	Organ donation discussions	Organ donation not supported	Not supported due to length of process	Organ donation discussions	Organ donation not supported	Not supported due to length of process
Eastern	127	43	3	247	79	17
London	229	88	3	206	77	11
Midlands	159	45	3	266	97	15
North West	175	50	2	222	70	16
Northern	99	19	1	91	31	8
Northern Ireland	52	18	1	48	18	3
Scotland	111	28	1	117	52	13
South Central	98	19	1	128	43	4
South East	155	39	0	150	52	10
South Wales	57	10	4	53	18	3
South West	81	16	0	110	38	7
Yorkshire	124	30	1	174	67	7

**Figure 3 - Family refusals where organ donation discussion occurred, eligible DBD  
1 April 2012 - 31 March 2020**



**Figure 4 - Family refusals where organ donation discussion occurred, eligible DCD  
1 April 2012 - 31 March 2020**

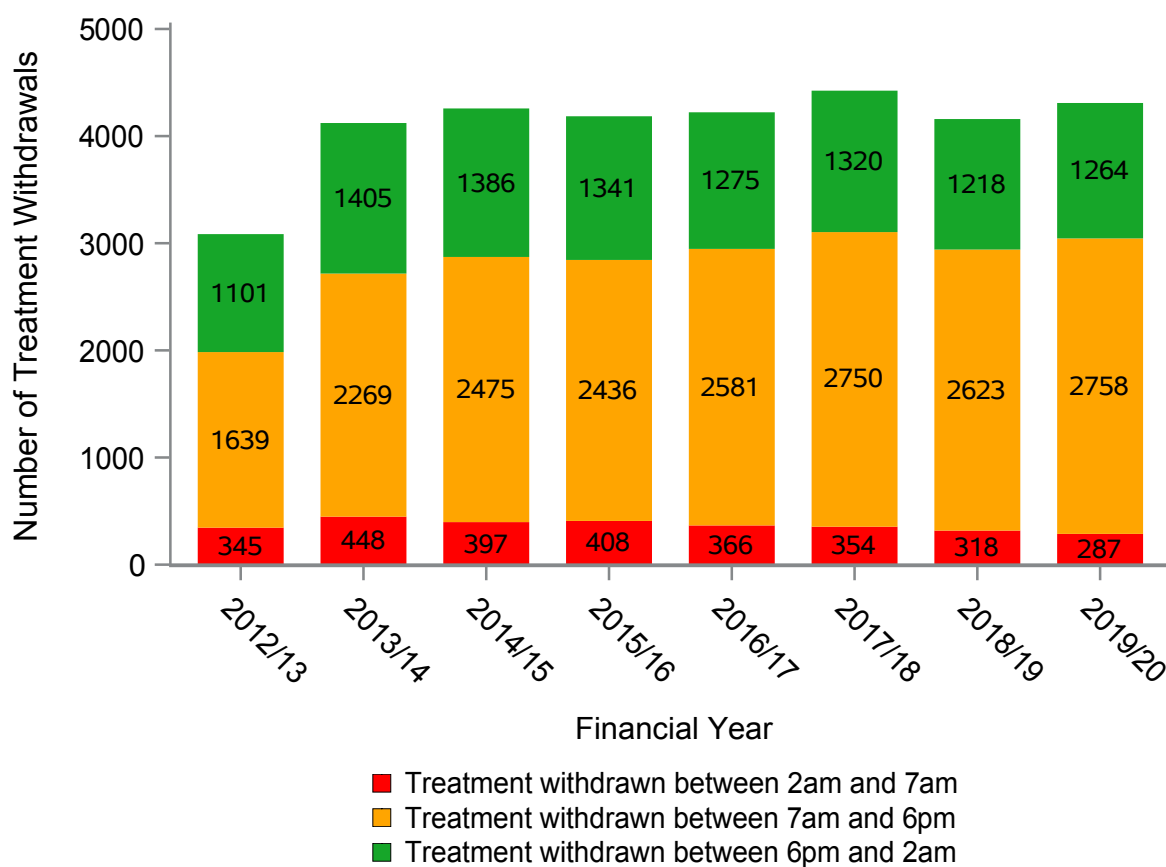


## Withdrawal of life sustaining treatment (WLST)

**Table 2 WLST timings in 2019/20**

Team name	Treatment withdrawn	Treatment withdrawn between 2am and 7am	
		N	%
Eastern	581	41	7
London	425	22	5
Midlands	565	34	6
North West	644	51	8
Northern	266	15	6
Northern Ireland	96	4	4
Scotland	233	15	6
South Central	368	30	8
South East	339	22	6
South Wales	161	9	6
South West	217	14	6
Yorkshire	414	30	7

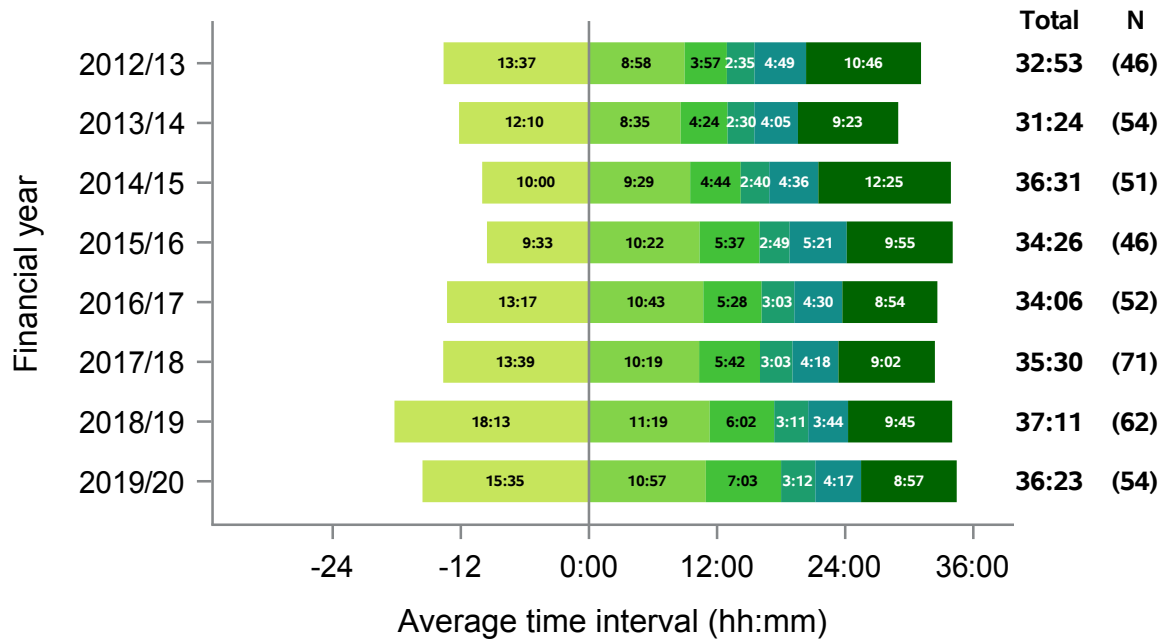
**Figure 5 - Timings of WLST, 1 April 2012 - 31 March 2020**



# Data by Organ Donation Services Team

## Eastern

Figure 6 - Median times of DBD organ donation process, Eastern, 1 April 2012 - 31 March 2020

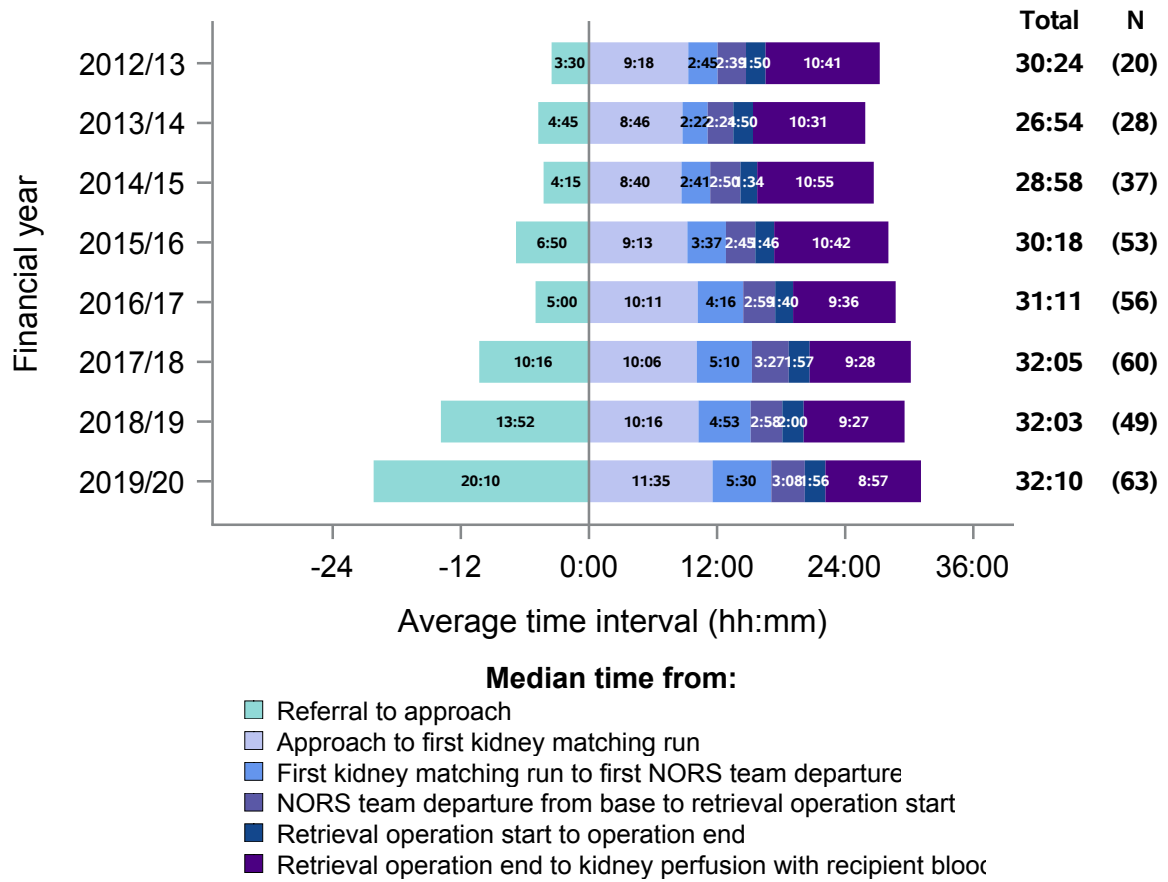


**Median time from:**

- Referral to approach
- Approach to first kidney matching run
- First kidney matching run to first NORS team departure
- NORS team departure from base to retrieval operation start
- Retrieval operation start to operation end
- Retrieval operation end to kidney perfusion with recipient blood

## Eastern

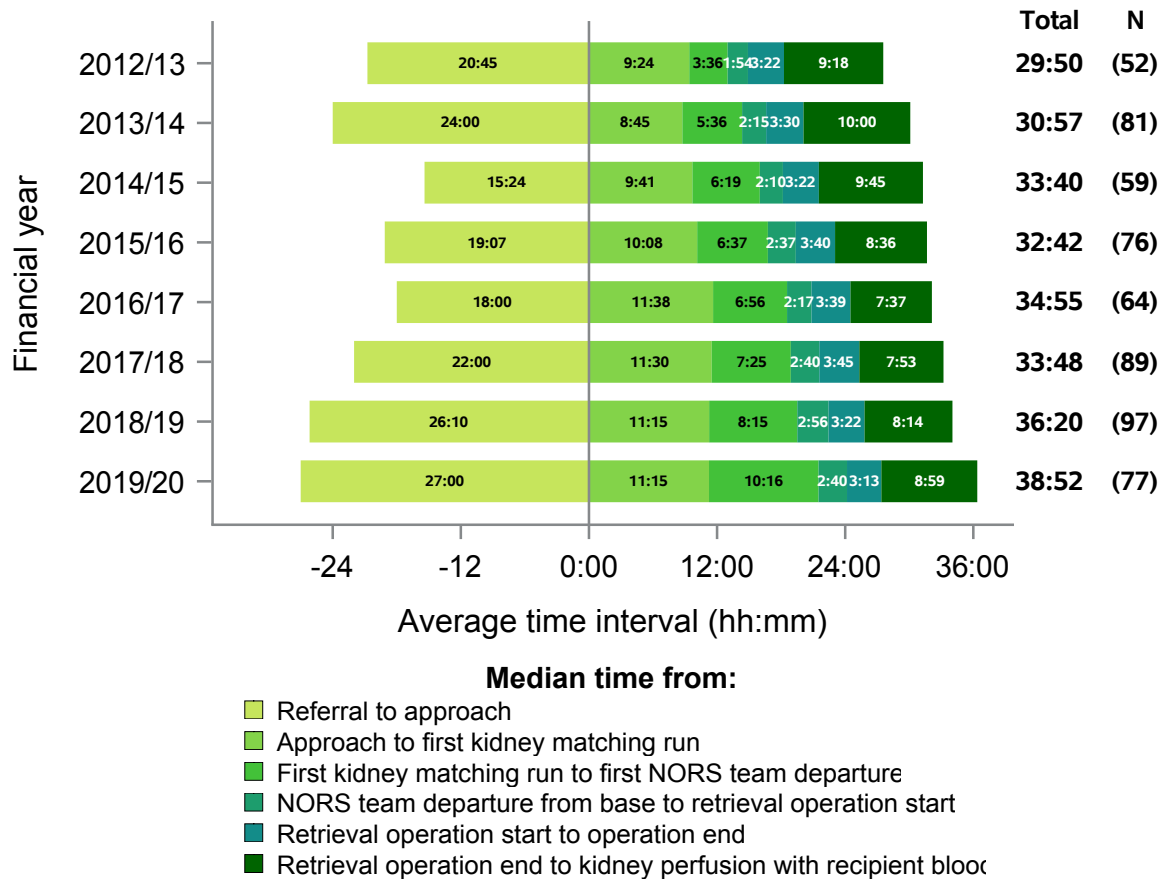
**Figure 7 - Median times of DCD organ donation process, Eastern, 1 April 2012 - 31 March 2020**





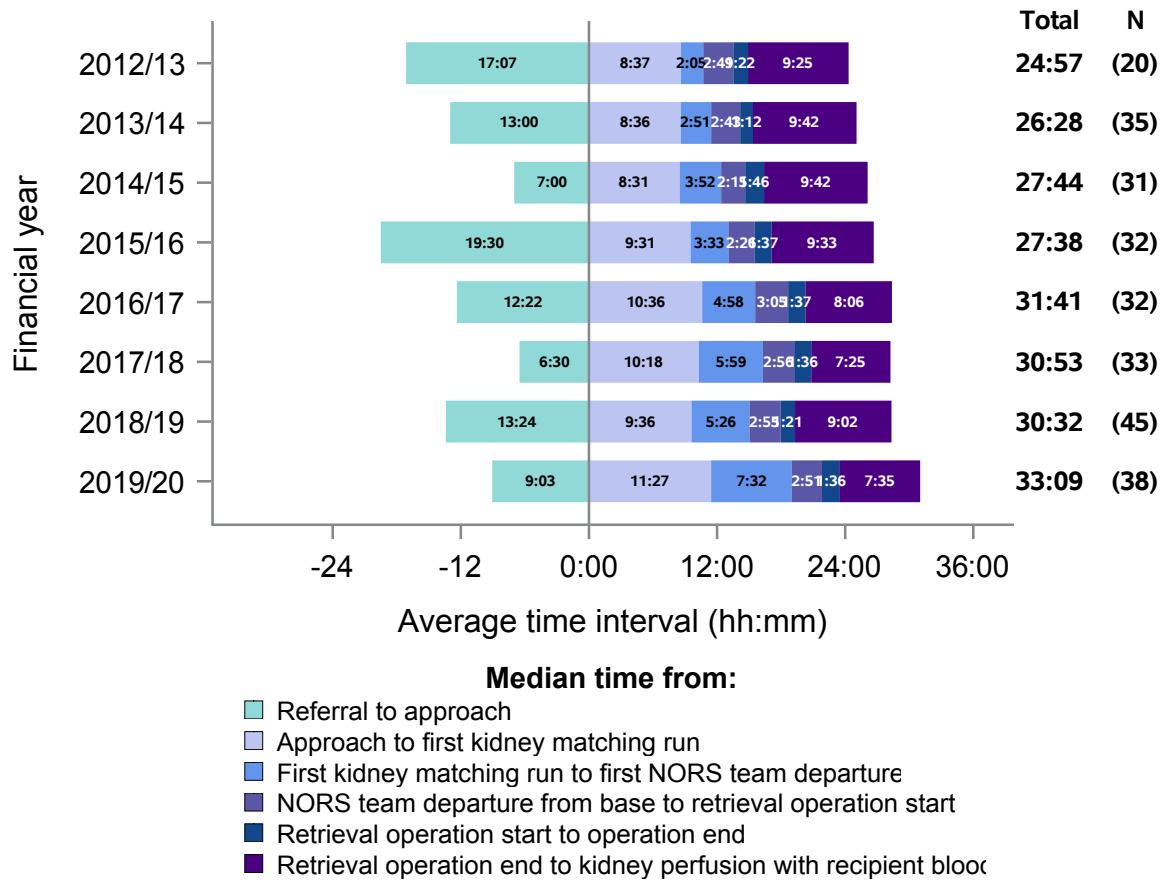
# London

Figure 8 - Median times of DBD organ donation process, London, 1 April 2012 - 31 March 2020



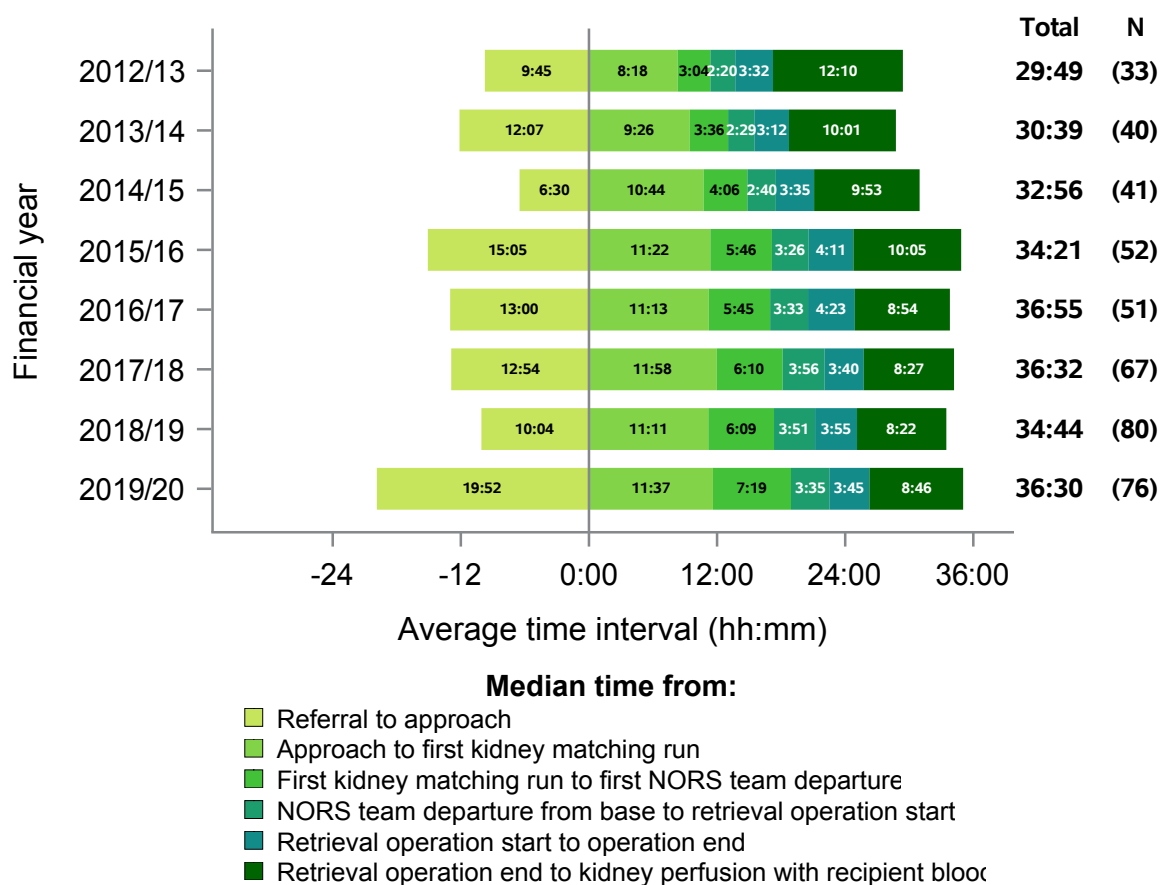
# London

Figure 9 - Median times of DCD organ donation process, London, 1 April 2012 - 31 March 2020



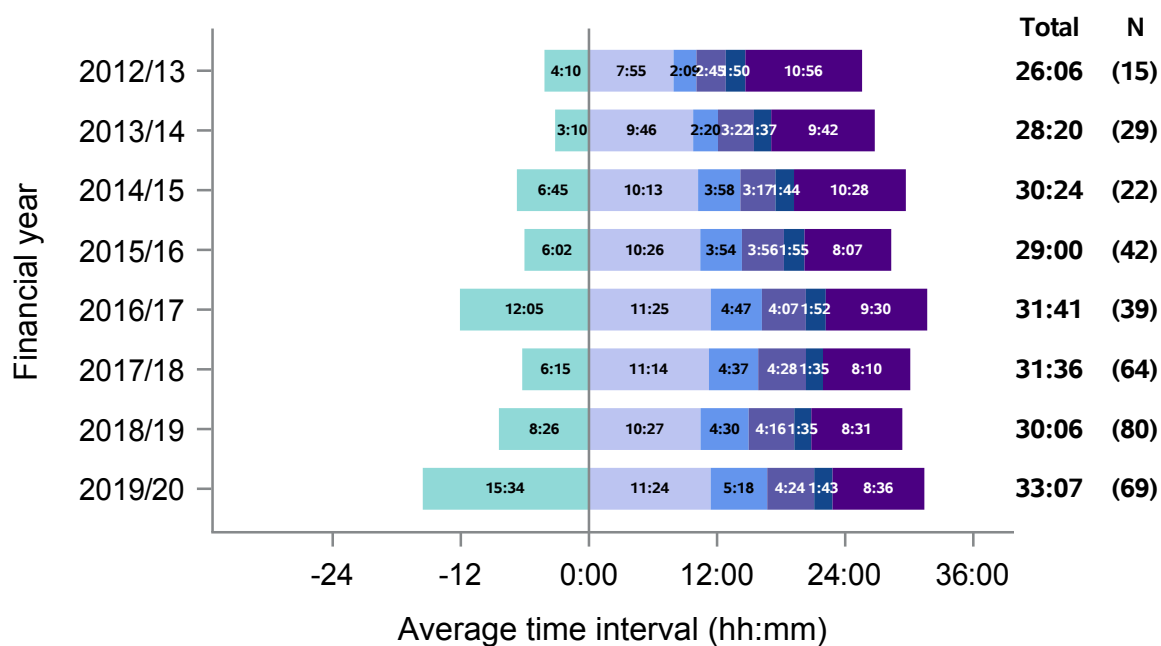
## Midlands

**Figure 10 - Median times of DBD organ donation process, Midlands, 1 April 2012 - 31 March 2020**



## Midlands

**Figure 11 - Median times of DCD organ donation process, Midlands, 1 April 2012 - 31 March 2020**

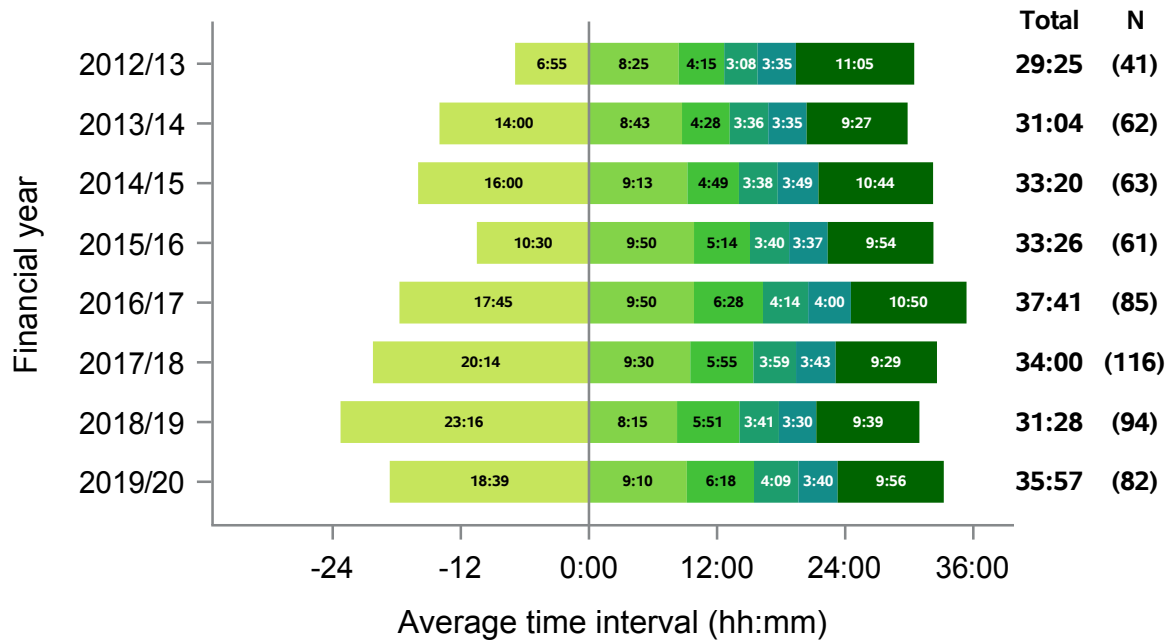


**Median time from:**

- Referral to approach
- Approach to first kidney matching run
- First kidney matching run to first NORS team departure
- NORS team departure from base to retrieval operation start
- Retrieval operation start to operation end
- Retrieval operation end to kidney perfusion with recipient blood

## North West

**Figure 12 - Median times of DBD organ donation process, North West, 1 April 2012 - 31 March 2020**

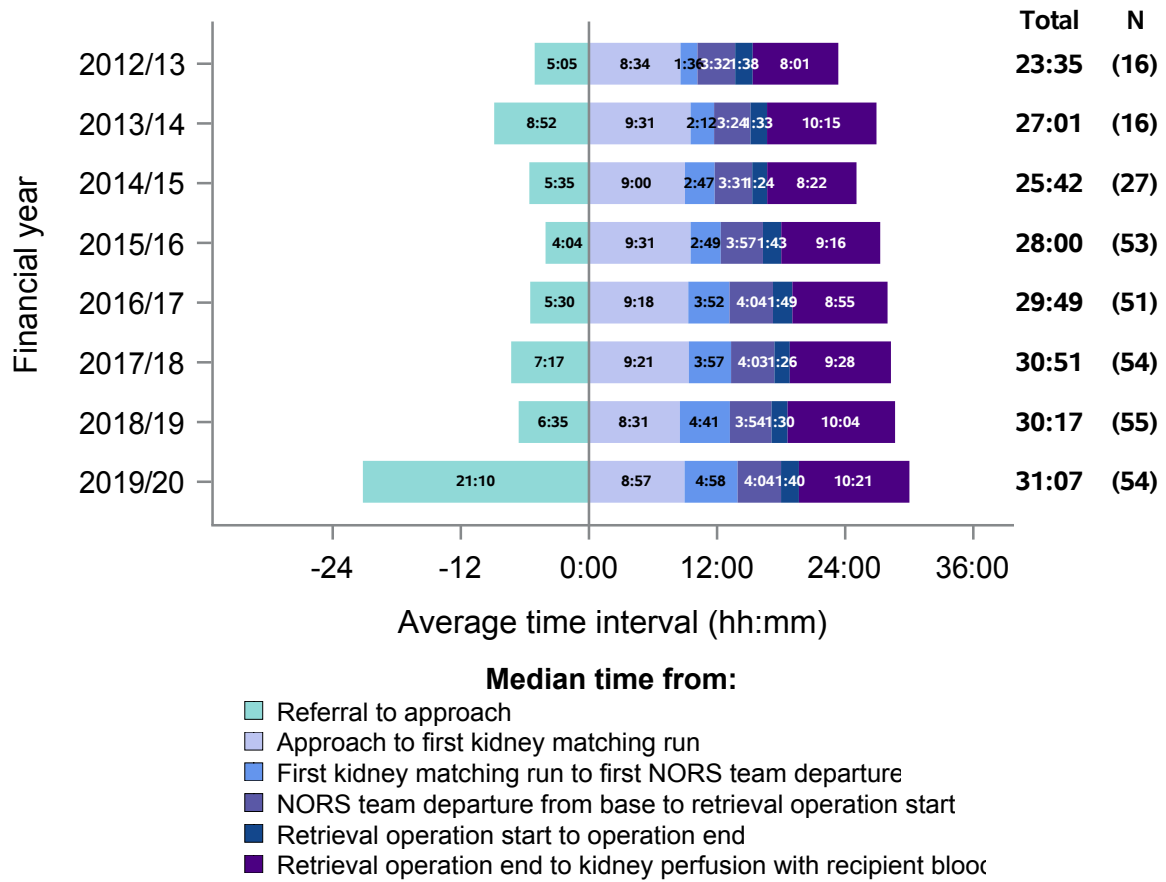


**Median time from:**

- Referral to approach
- Approach to first kidney matching run
- First kidney matching run to first NORS team departure
- NORS team departure from base to retrieval operation start
- Retrieval operation start to operation end
- Retrieval operation end to kidney perfusion with recipient blood

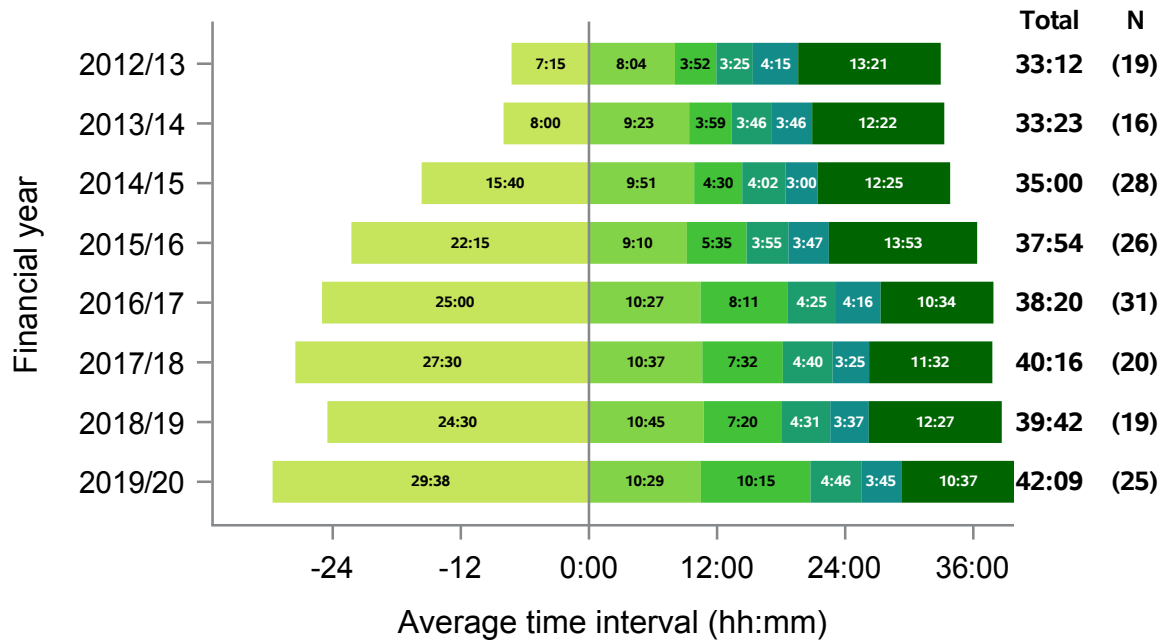
## North West

**Figure 13 - Median times of DCD organ donation process, North West, 1 April 2012 - 31 March 2020**



## Northern Ireland

**Figure 14 - Median times of DBD organ donation process, Northern Ireland, 1 April 2012 - 31 March 2020**

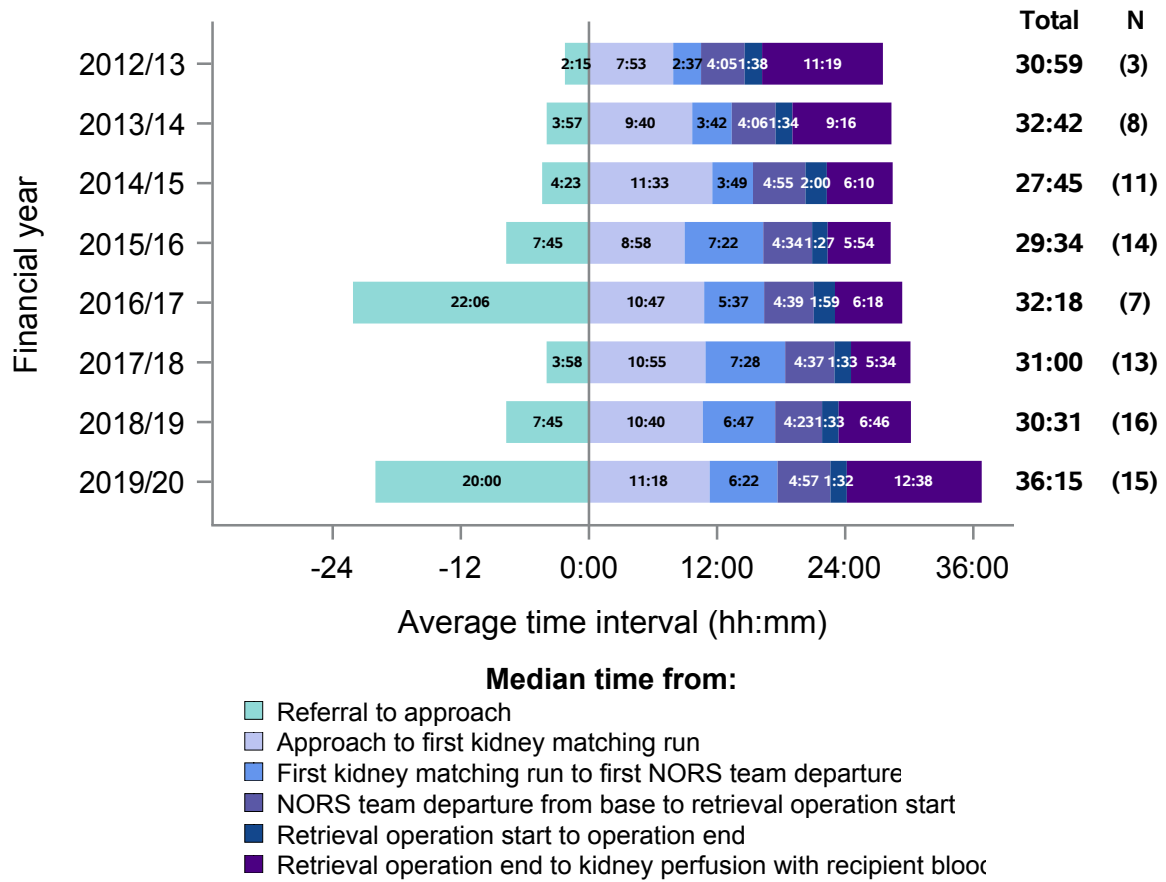


**Median time from:**

- Referral to approach
- Approach to first kidney matching run
- First kidney matching run to first NORS team departure
- NORS team departure from base to retrieval operation start
- Retrieval operation start to operation end
- Retrieval operation end to kidney perfusion with recipient blood

## Northern Ireland

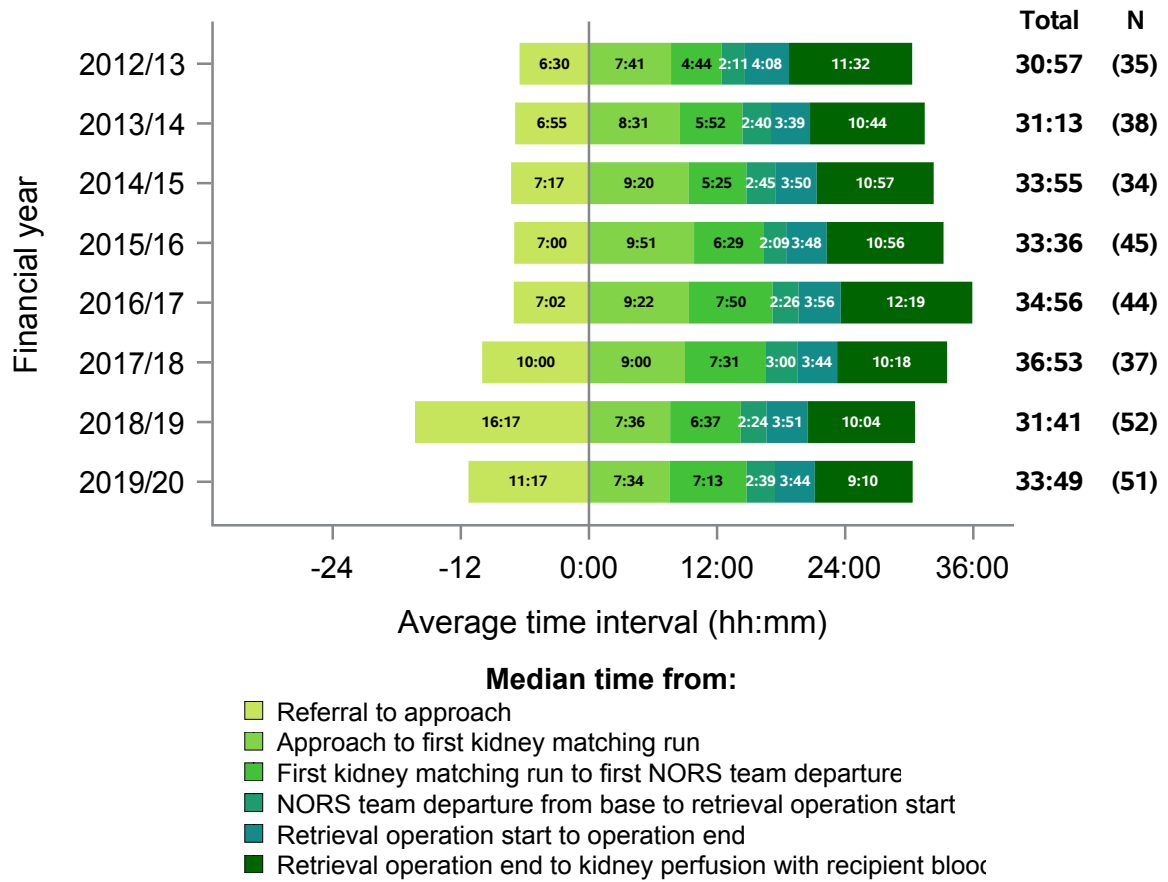
**Figure 15 - Median times of DCD organ donation process, Northern Ireland, 1 April 2012 - 31 March 2020**





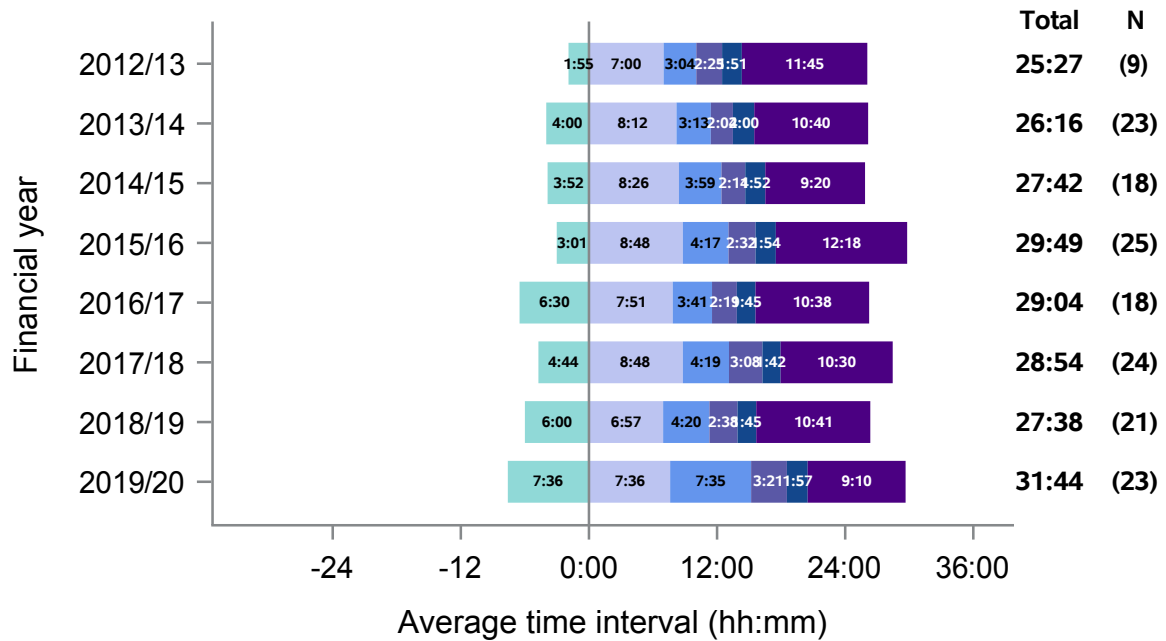
# Northern

**Figure 16 - Median times of DBD organ donation process, Northern, 1 April 2012 - 31 March 2020**



# Northern

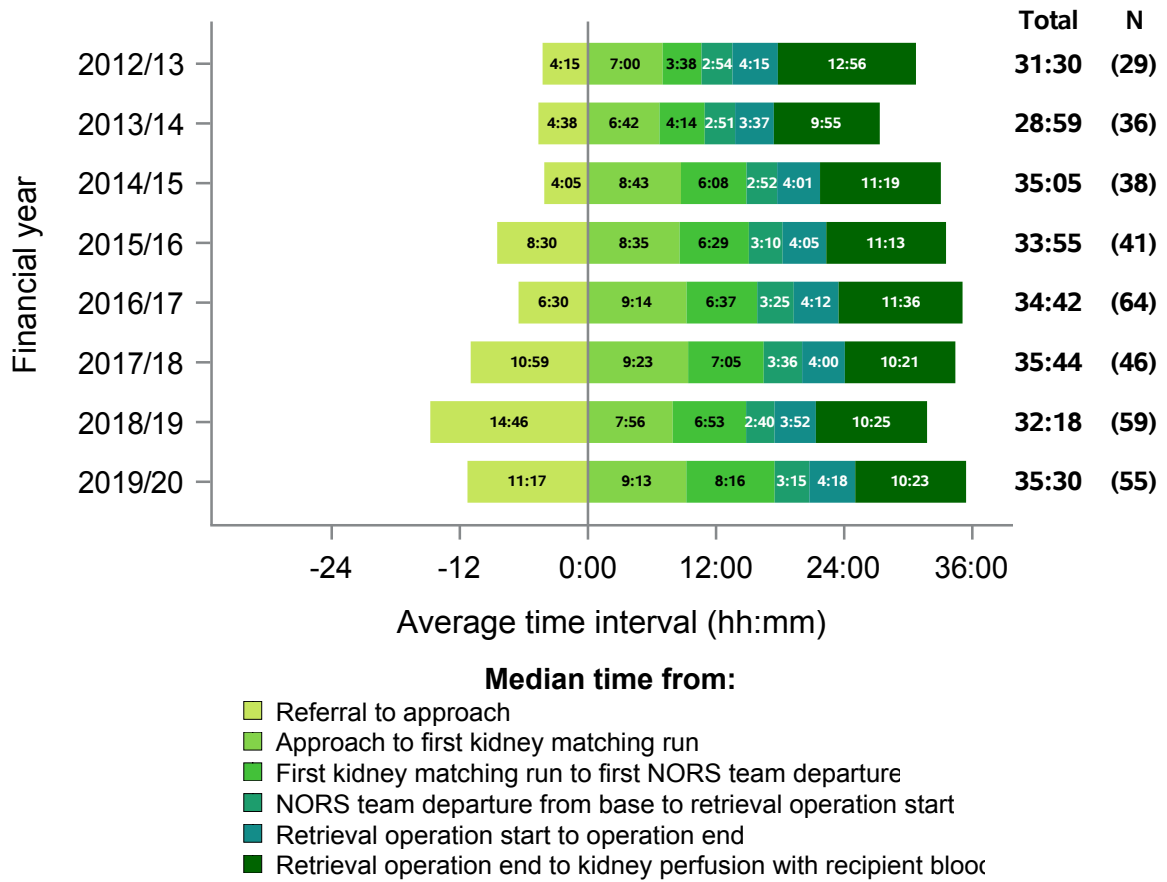
**Figure 17 - Median times of DCD organ donation process, Northern, 1 April 2012 - 31 March 2020**



- Median time from:**
- Referral to approach
  - Approach to first kidney matching run
  - First kidney matching run to first NORS team departure
  - NORS team departure from base to retrieval operation start
  - Retrieval operation start to operation end
  - Retrieval operation end to kidney perfusion with recipient blood

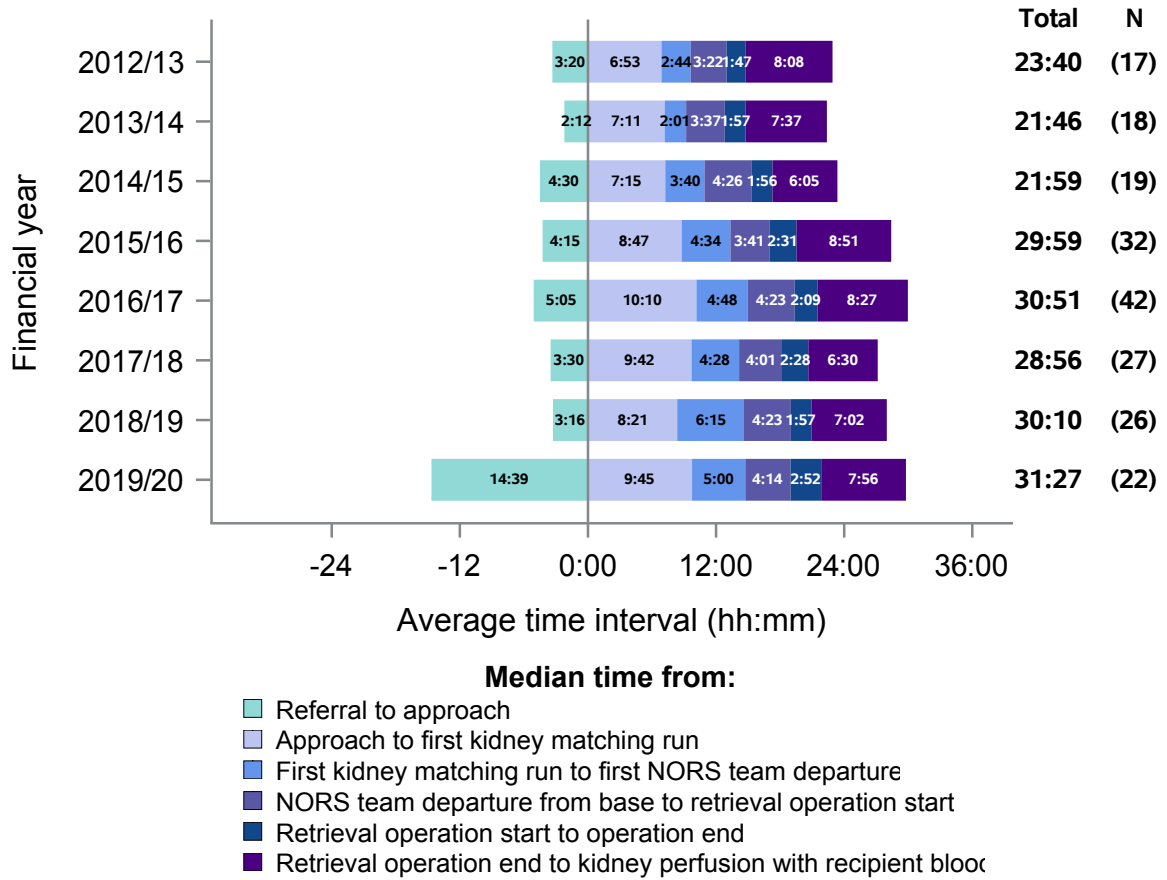
# Scotland

**Figure 18 - Median times of DBD organ donation process, Scotland, 1 April 2012 - 31 March 2020**



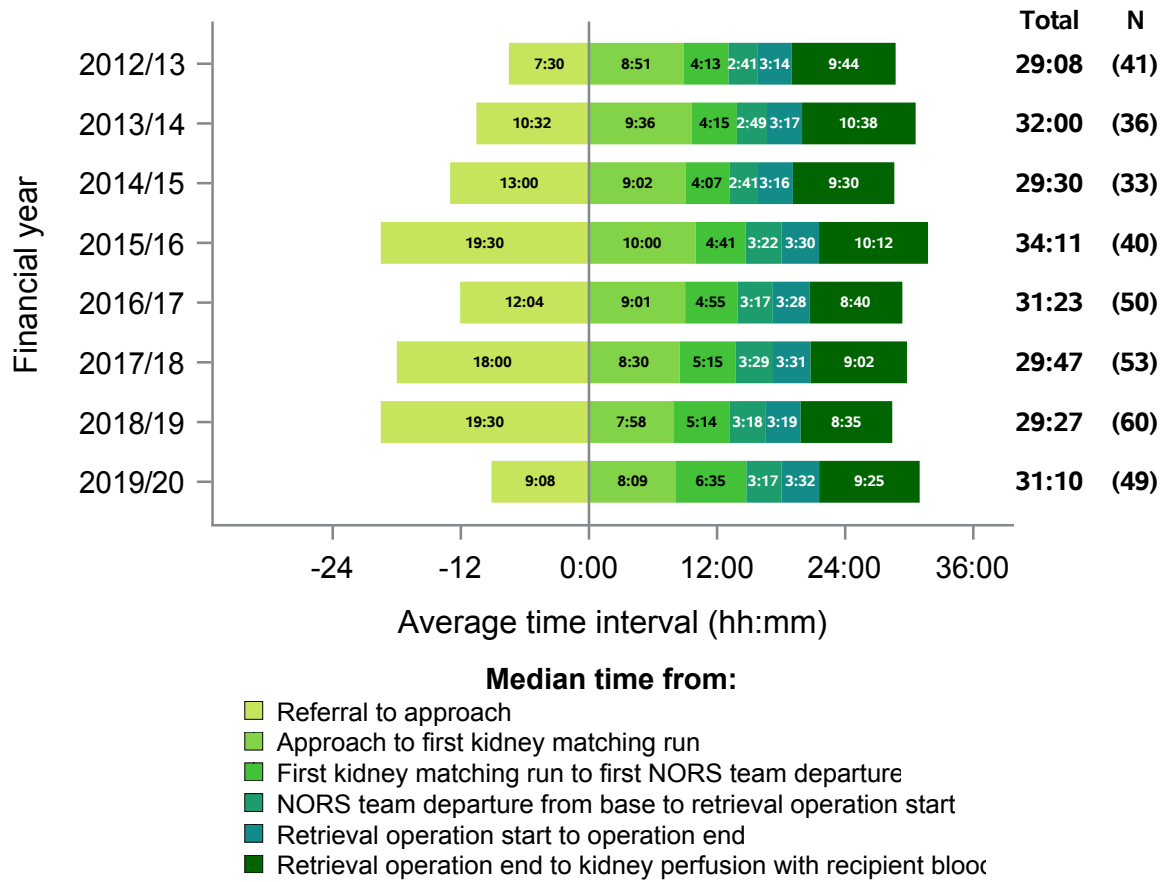
# Scotland

**Figure 19 - Median times of DCD organ donation process, Scotland, 1 April 2012 - 31 March 2020**



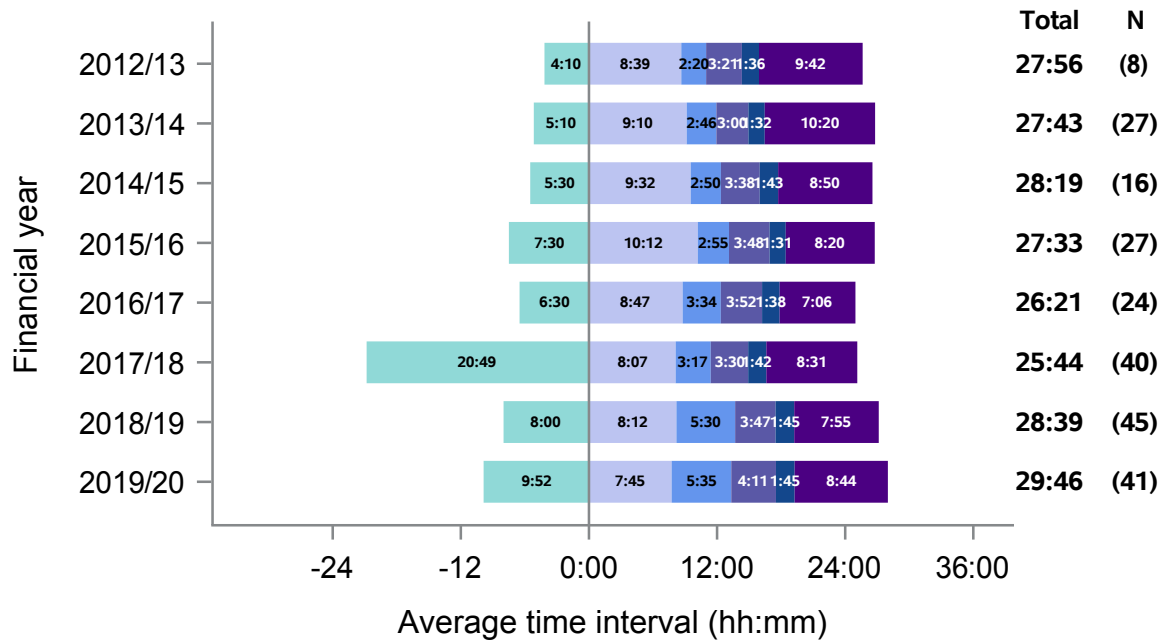
## South Central

**Figure 20 - Median times of DBD organ donation process, South Central, 1 April 2012 - 31 March 2020**



## South Central

**Figure 21 - Median times of DCD organ donation process, South Central, 1 April 2012 - 31 March 2020**

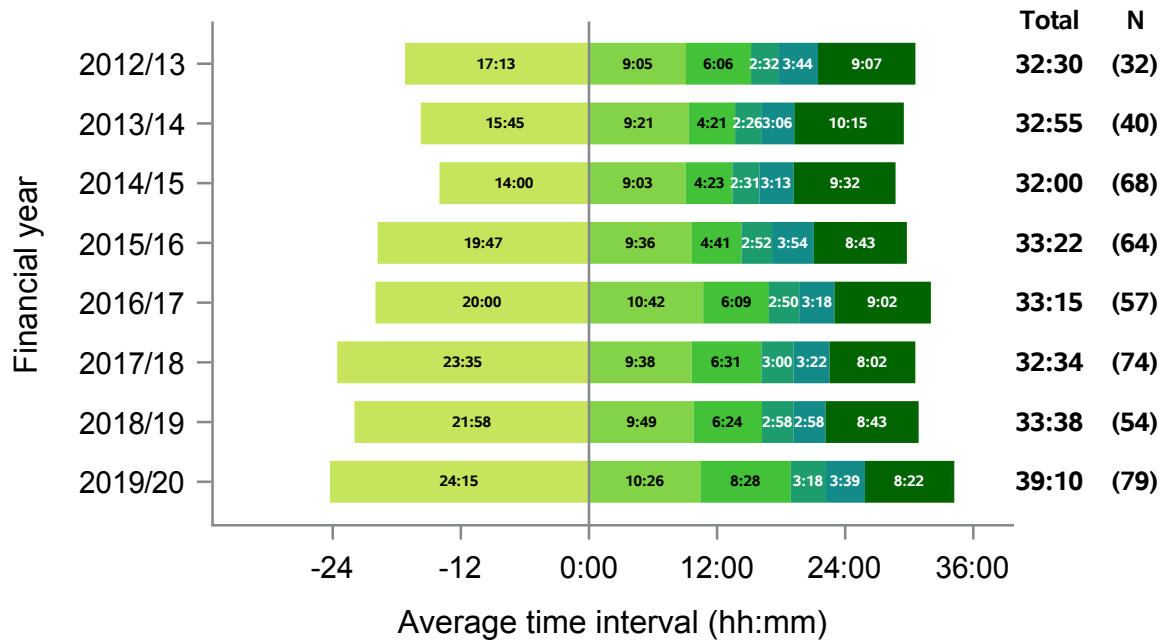


**Median time from:**

- Referral to approach
- Approach to first kidney matching run
- First kidney matching run to first NORS team departure
- NORS team departure from base to retrieval operation start
- Retrieval operation start to operation end
- Retrieval operation end to kidney perfusion with recipient blood

## South East

**Figure 22 - Median times of DBD organ donation process, South East, 1 April 2012 - 31 March 2020**

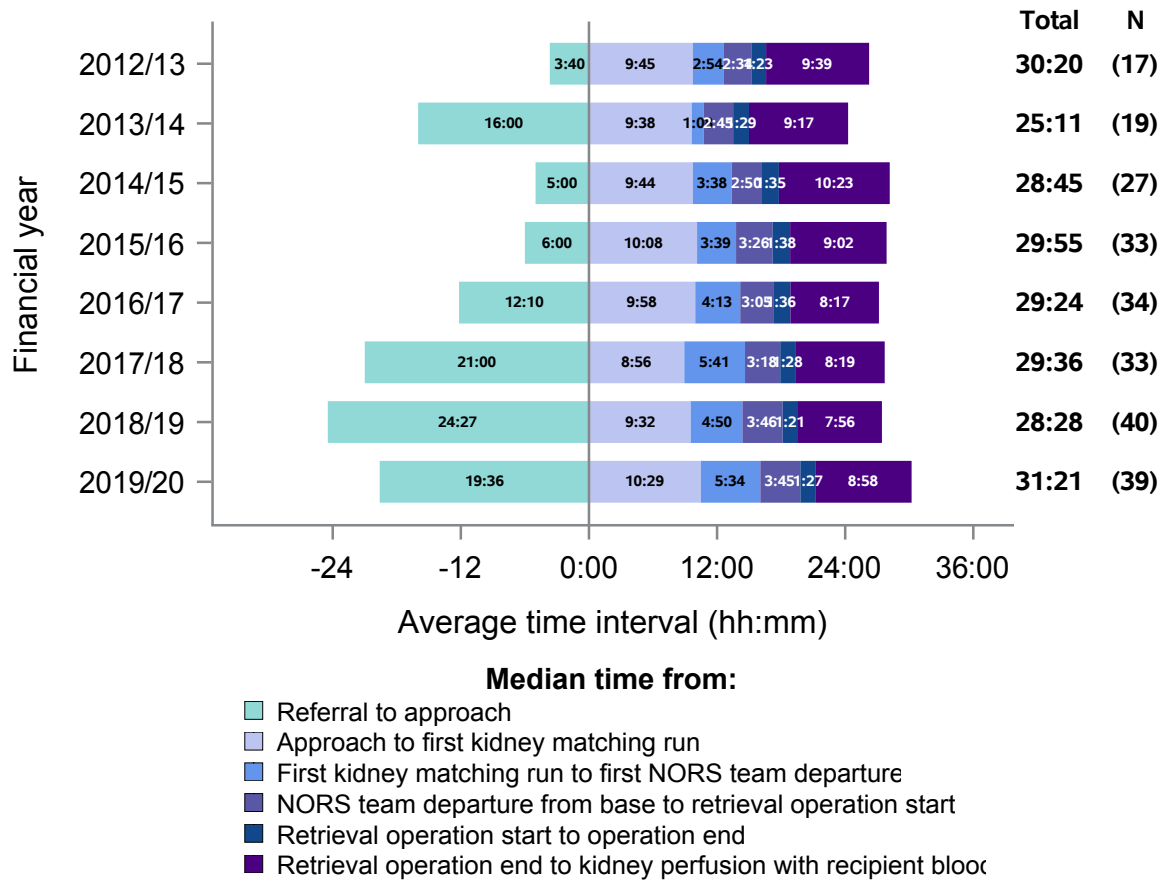


**Median time from:**

- Referral to approach
- Approach to first kidney matching run
- First kidney matching run to first NORS team departure
- NORS team departure from base to retrieval operation start
- Retrieval operation start to operation end
- Retrieval operation end to kidney perfusion with recipient blood

## South East

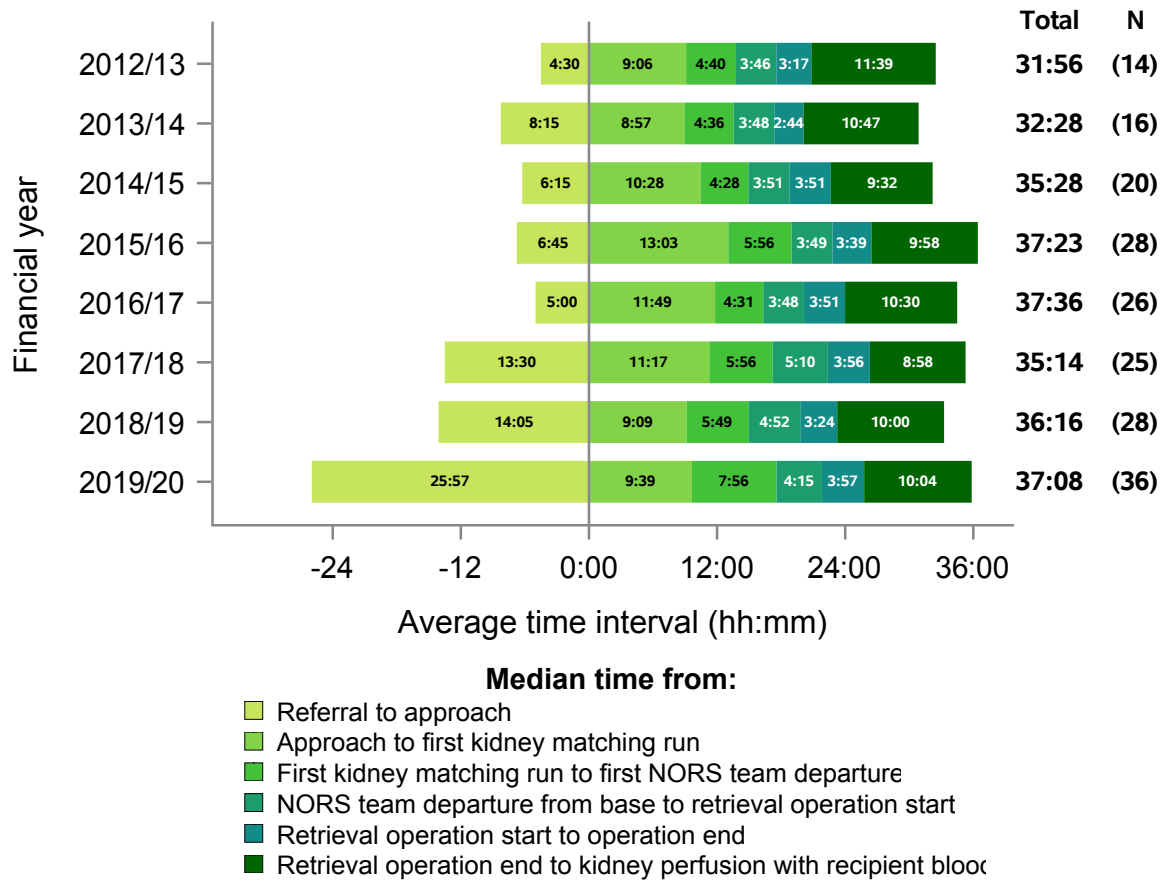
**Figure 23 - Median times of DCD organ donation process, South East, 1 April 2012 - 31 March 2020**





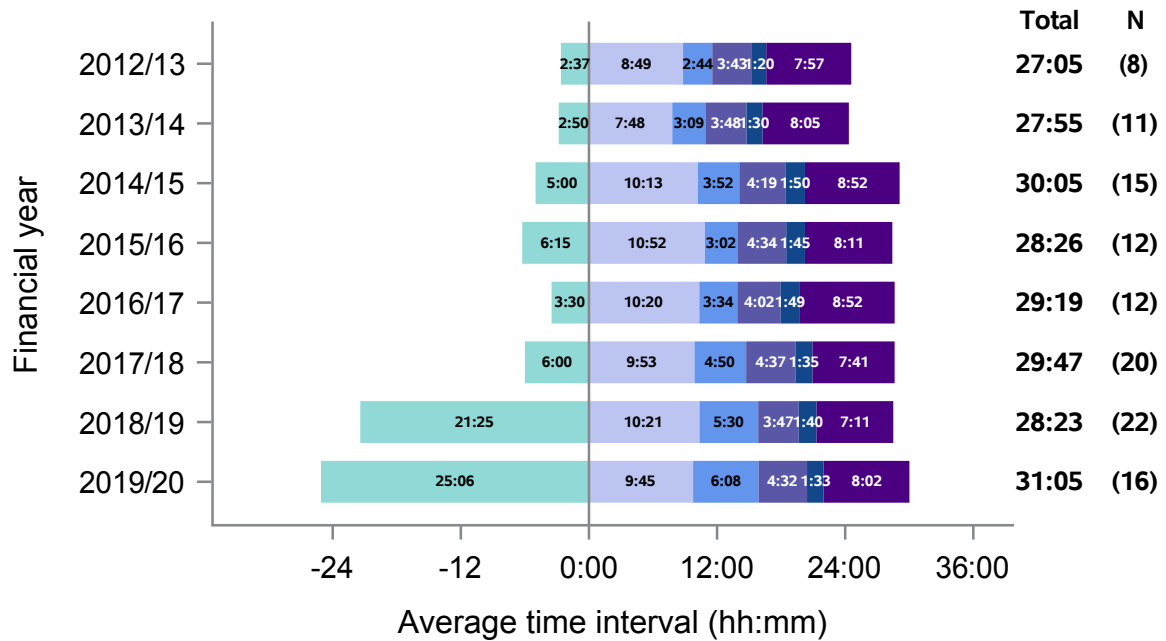
## South Wales

**Figure 24 - Median times of DBD organ donation process, South Wales, 1 April 2012 - 31 March 2020**



## South Wales

**Figure 25 - Median times of DCD organ donation process, South Wales, 1 April 2012 - 31 March 2020**

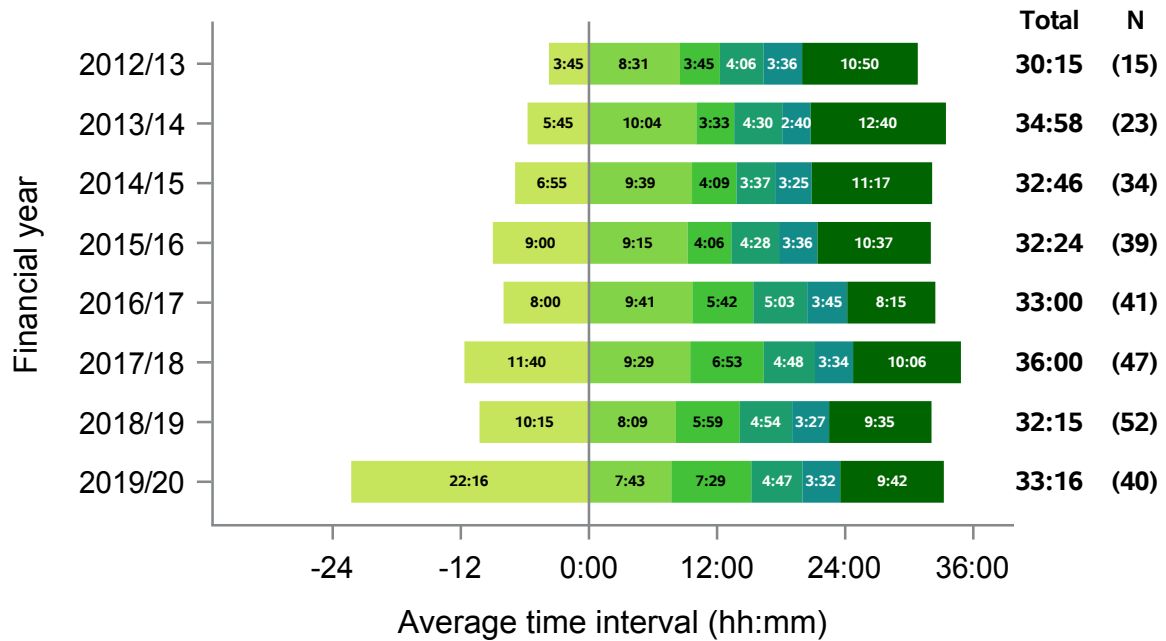


**Median time from:**

- Referral to approach
- Approach to first kidney matching run
- First kidney matching run to first NORS team departure
- NORS team departure from base to retrieval operation start
- Retrieval operation start to operation end
- Retrieval operation end to kidney perfusion with recipient blood

## South West

**Figure 26 - Median times of DBD organ donation process, South West, 1 April 2012 - 31 March 2020**

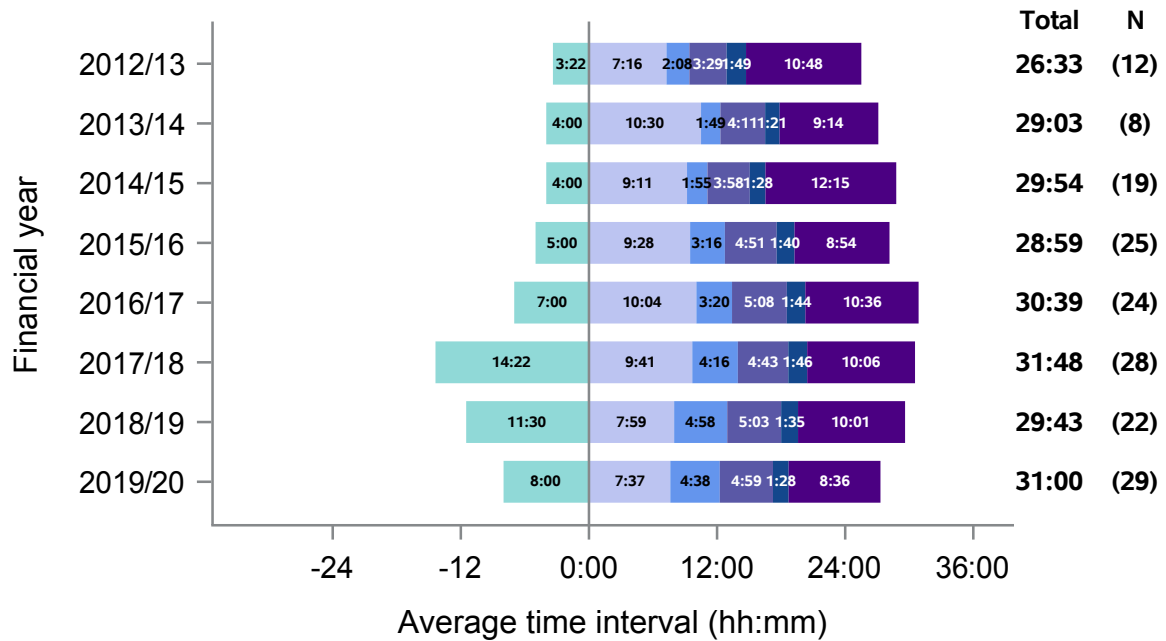


**Median time from:**

- Referral to approach
- Approach to first kidney matching run
- First kidney matching run to first NORS team departure
- NORS team departure from base to retrieval operation start
- Retrieval operation start to operation end
- Retrieval operation end to kidney perfusion with recipient blood

## South West

**Figure 27 - Median times of DCD organ donation process, South West, 1 April 2012 - 31 March 2020**

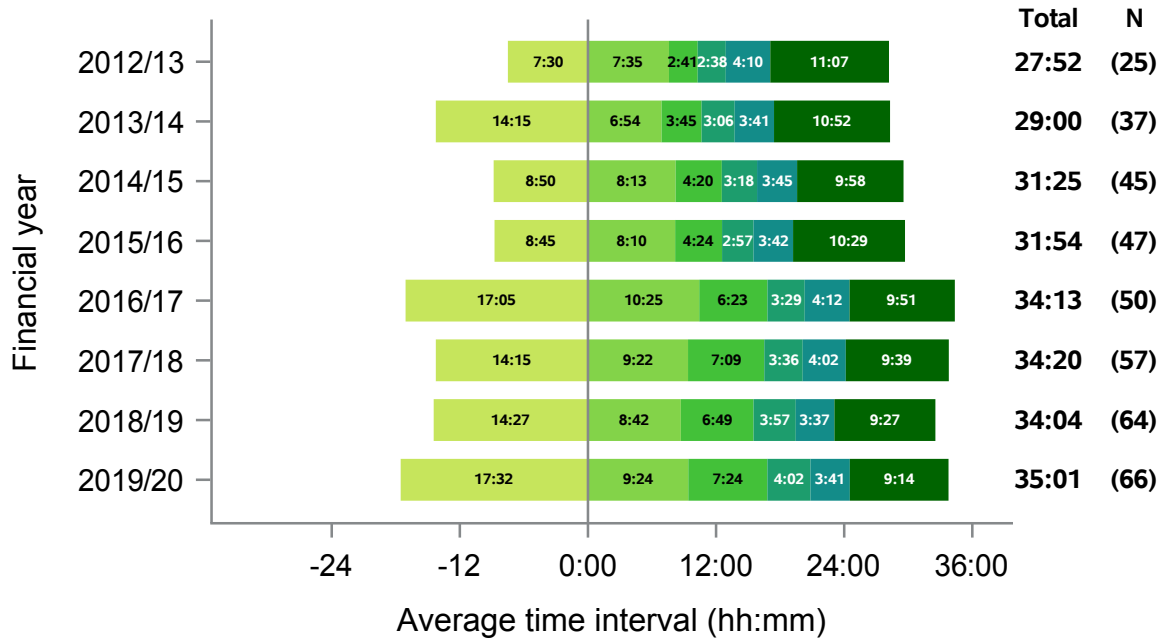


**Median time from:**

- Referral to approach
- Approach to first kidney matching run
- First kidney matching run to first NORS team departure
- NORS team departure from base to retrieval operation start
- Retrieval operation start to operation end
- Retrieval operation end to kidney perfusion with recipient blood

# Yorkshire

**Figure 28 - Median times of DBD organ donation process, Yorkshire, 1 April 2012 - 31 March 2020**

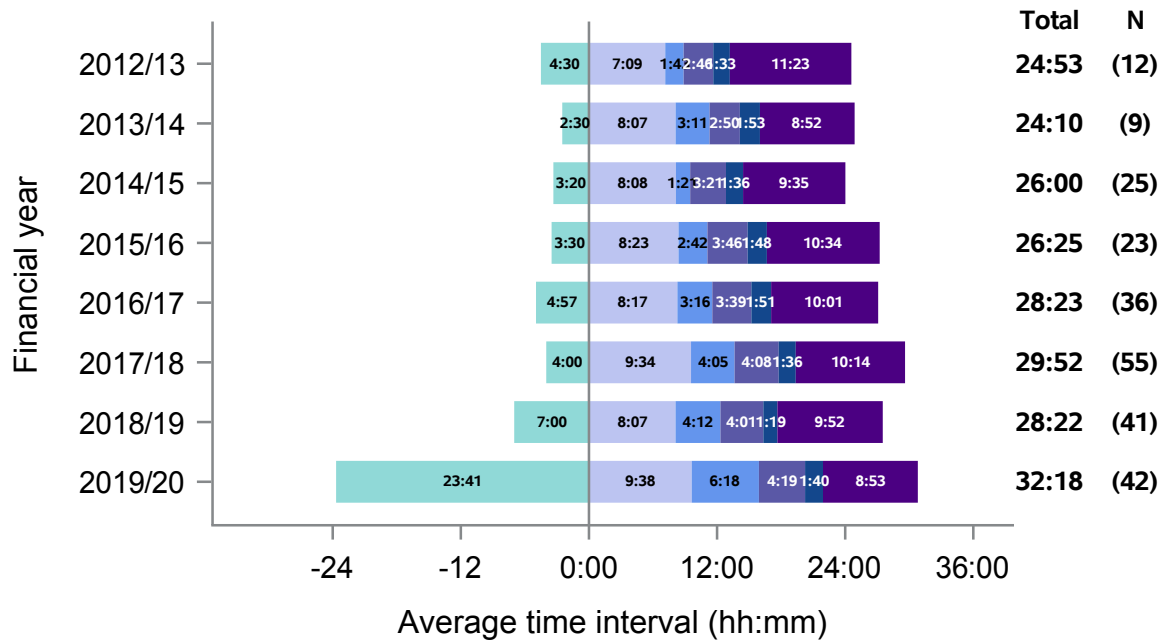


**Median time from:**

- Referral to approach
- Approach to first kidney matching run
- First kidney matching run to first NORS team departure
- NORS team departure from base to retrieval operation start
- Retrieval operation start to operation end
- Retrieval operation end to kidney perfusion with recipient blood

# Yorkshire

**Figure 29 - Median times of DCD organ donation process, Yorkshire, 1 April 2012 - 31 March 2020**



**Median time from:**

- Referral to approach
- Approach to first kidney matching run
- First kidney matching run to first NORS team departure
- NORS team departure from base to retrieval operation start
- Retrieval operation start to operation end
- Retrieval operation end to kidney perfusion with recipient blood

**Table 3 Summary of Organ Donation Services Teams median timings, DBD, 2019/20**

<b>Team name</b>	<b>Referral to approach</b>	<b>Approach to first kidney matching run</b>	<b>First kidney matching run to first NORS team departure</b>	<b>NORS team departure from base to retrieval operation start</b>	<b>Retrieval operation start to operation end</b>	<b>Retrieval operation end to kidney perfusion with recipient blood</b>
Eastern	15:35	10:57	7:03	3:12	4:17	8:57
London	27:00	11:15	10:16	2:40	3:13	8:59
Midlands	19:52	11:37	7:19	3:35	3:45	8:46
Northern	11:17	7:34	7:13	2:39	3:44	9:10
Northern Ireland	29:38	10:29	10:15	4:46	3:45	10:37
North West	18:39	9:10	6:18	4:09	3:40	9:56
Scotland	11:17	9:13	8:16	3:15	4:18	10:23
South Central	9:08	8:09	6:35	3:17	3:32	9:25
South East	24:15	10:26	8:28	3:18	3:39	8:22
South Wales	25:57	9:39	7:56	4:15	3:57	10:04
South West	22:16	7:43	7:29	4:47	3:32	9:42
Yorkshire	17:32	9:24	7:24	4:02	3:41	9:14

**Table 4 Summary of Organ Donation Services Teams median timings, DCD, 2019/20**

<b>Team name</b>	<b>Referral to approach</b>	<b>Approach to first kidney matching run</b>	<b>First kidney matching run to first NORS team departure</b>	<b>NORS team departure from base to operation start</b>	<b>Operation start to operation end</b>	<b>Operation end to kidney perfusion with recipient's blood</b>
Eastern	20:10	11:35	5:30	3:08	1:56	8:57
London	9:03	11:27	7:32	2:51	1:36	7:35
Midlands	15:34	11:24	5:18	4:24	1:43	8:36
Northern	7:36	7:36	7:35	3:21	1:57	9:10
Northern Ireland	20:00	11:18	6:22	4:57	1:32	12:38
North West	21:10	8:57	4:58	4:04	1:40	10:21
Scotland	14:39	9:45	5:00	4:14	2:52	7:56
South Central	9:52	7:45	5:35	4:11	1:45	8:44
South East	19:36	10:29	5:34	3:45	1:27	8:58
South Wales	25:06	9:45	6:08	4:32	1:33	8:02
South West	8:00	7:37	4:38	4:59	1:28	8:36
Yorkshire	23:41	9:38	6:18	4:19	1:40	8:53