

Length of the deceased organ donation and transplantation process

Six-monthly report

1 April 2012 - 30 September 2020

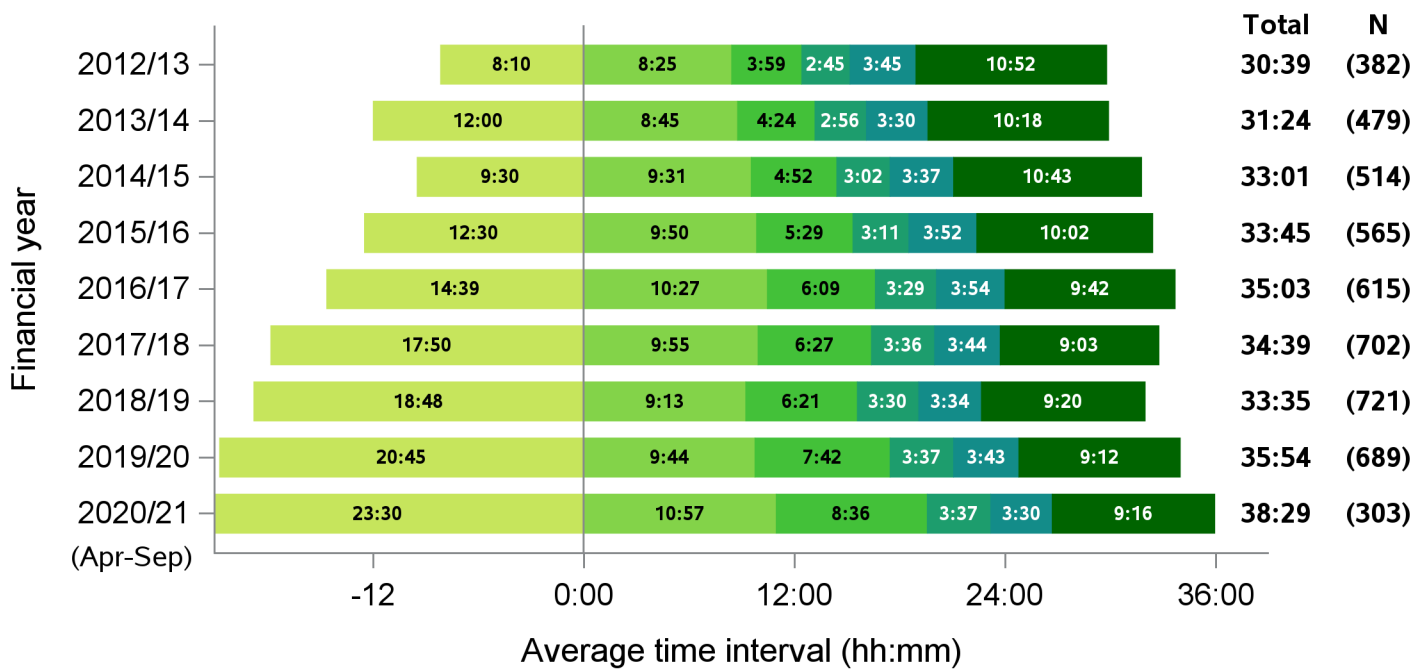
Produced 8 February 2021

Statistics and Clinical Studies



Summary of UK activity

Figure 1 - Median times of DBD organ donation process, UK, 1 April 2012 - 30 September 2020



Median time from:

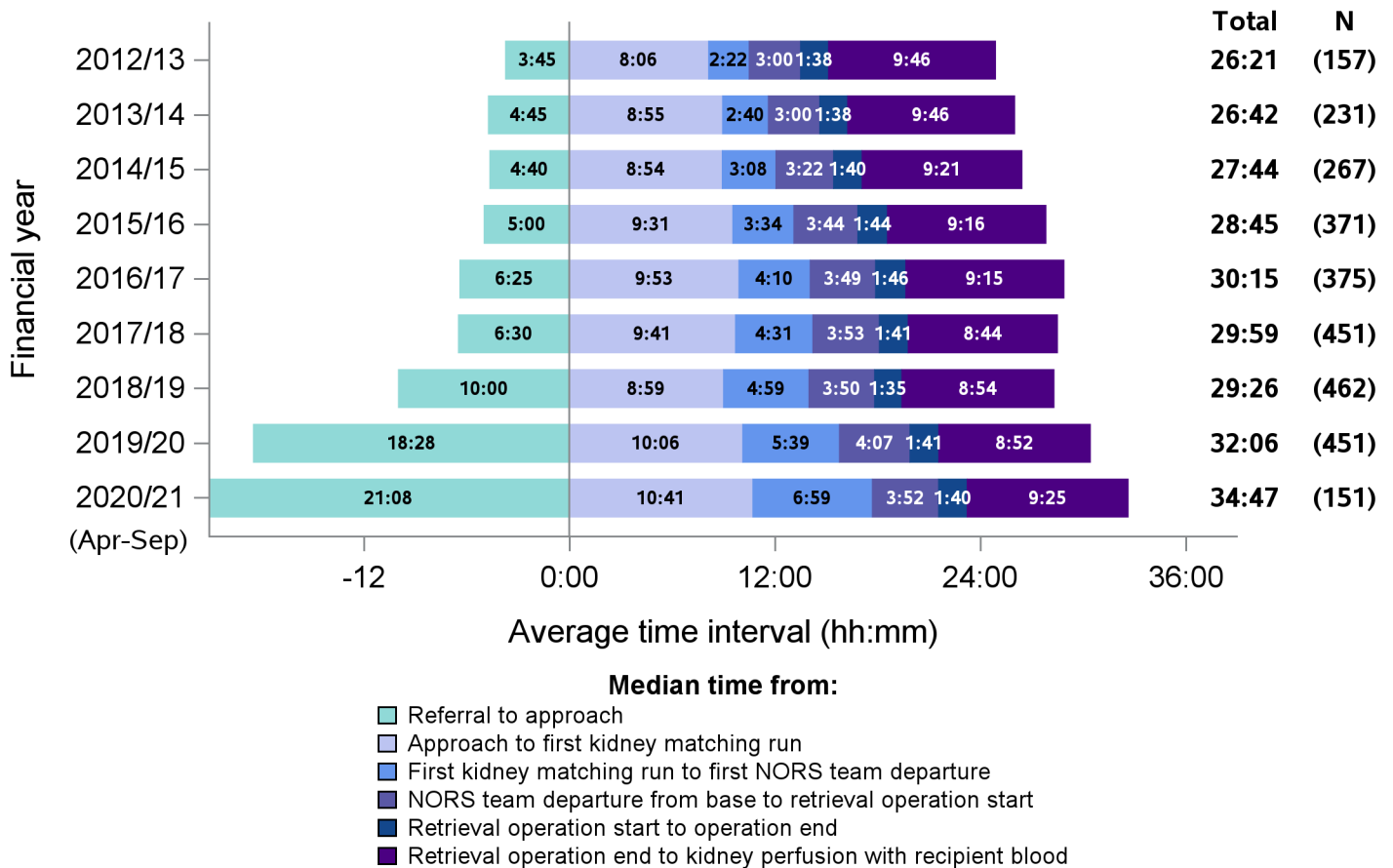
- Referral to approach
- Approach to first kidney matching run
- First kidney matching run to first NORS team departure
- NORS team departure from base to retrieval operation start
- Retrieval operation start to operation end
- Retrieval operation end to kidney perfusion with recipient blood

Time segment	Group with oversight responsibility
Referral to approach	National Organ Donation Committee
Approach to first kidney matching run	National Organ Donation Committee
First kidney matching run to first NORS team departure	ODT Hub
NORS team departure from base to retrieval operation start	Retrieval Advisory Group
Retrieval operation start to operation end	Retrieval Advisory Group
Retrieval operation end to kidney perfusion with recipient blood	Retrieval Advisory Group

It is important to note when interpreting all timings charts:

- To aid interpretation of the process following approach, time from referral to formal approach is presented before 0. This period is also excluded from the total median calculation
- If both a cardiothoracic and abdominal NORS team attend a donor; the earliest departure time is selected, and similarly the earliest retrieval operation start time
- The latest operation end time is selected, to signify the end of all donor surgery
- N values do not correspond to the number of donors each year, this is the number of patients for which all time values were available
- Total medians do not equal the sum of all medians calculated
- All timings charts are presented on the same scale to allow for comparison

Figure 2 - Median times of DCD organ donation process, UK, 1 April 2012 - 30 September 2020

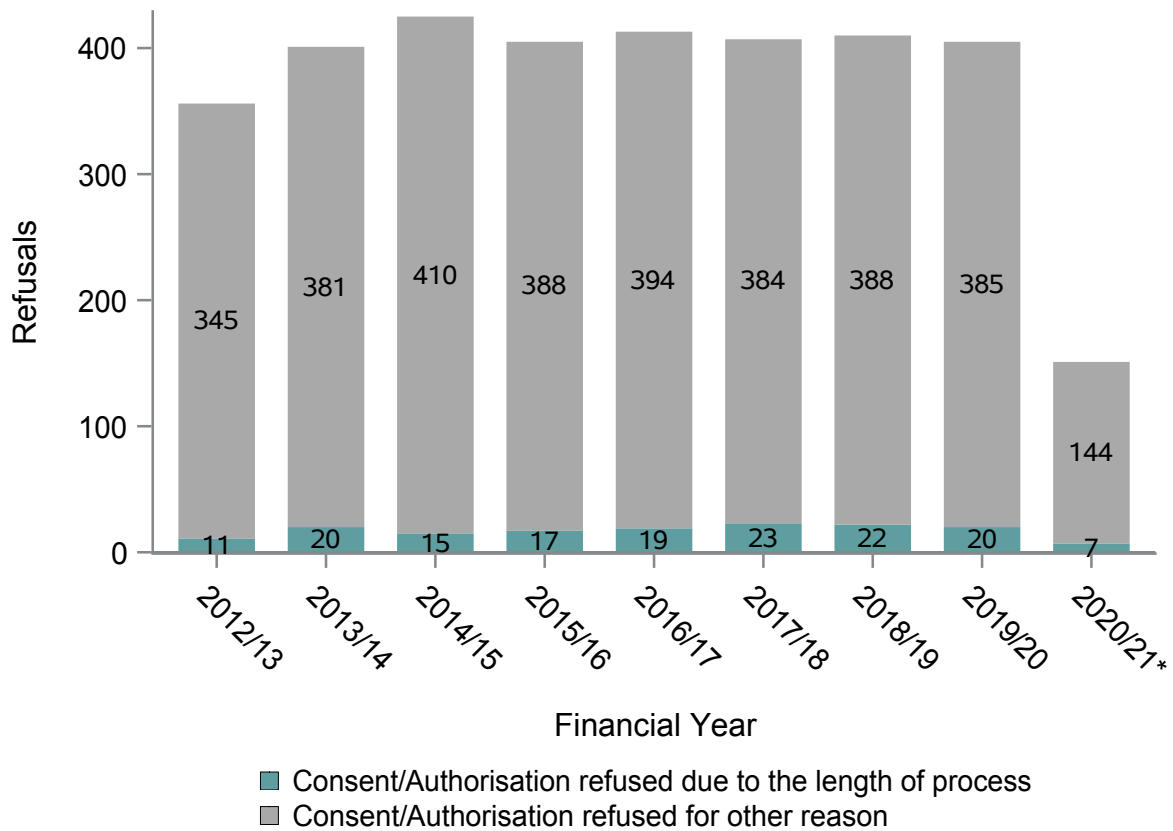


Time segment	Group with oversight responsibility
Referral to approach	National Organ Donation Committee
Approach to first kidney matching run	National Organ Donation Committee
First kidney matching run to first NORS team departure	ODT Hub
NORS team departure from base to retrieval operation start	Retrieval Advisory Group
Retrieval operation start to operation end	Retrieval Advisory Group
Retrieval operation end to kidney perfusion with recipient blood	Retrieval Advisory Group

Consent/authorisation not ascertained due to 'family felt the length of time for donation process was too long'

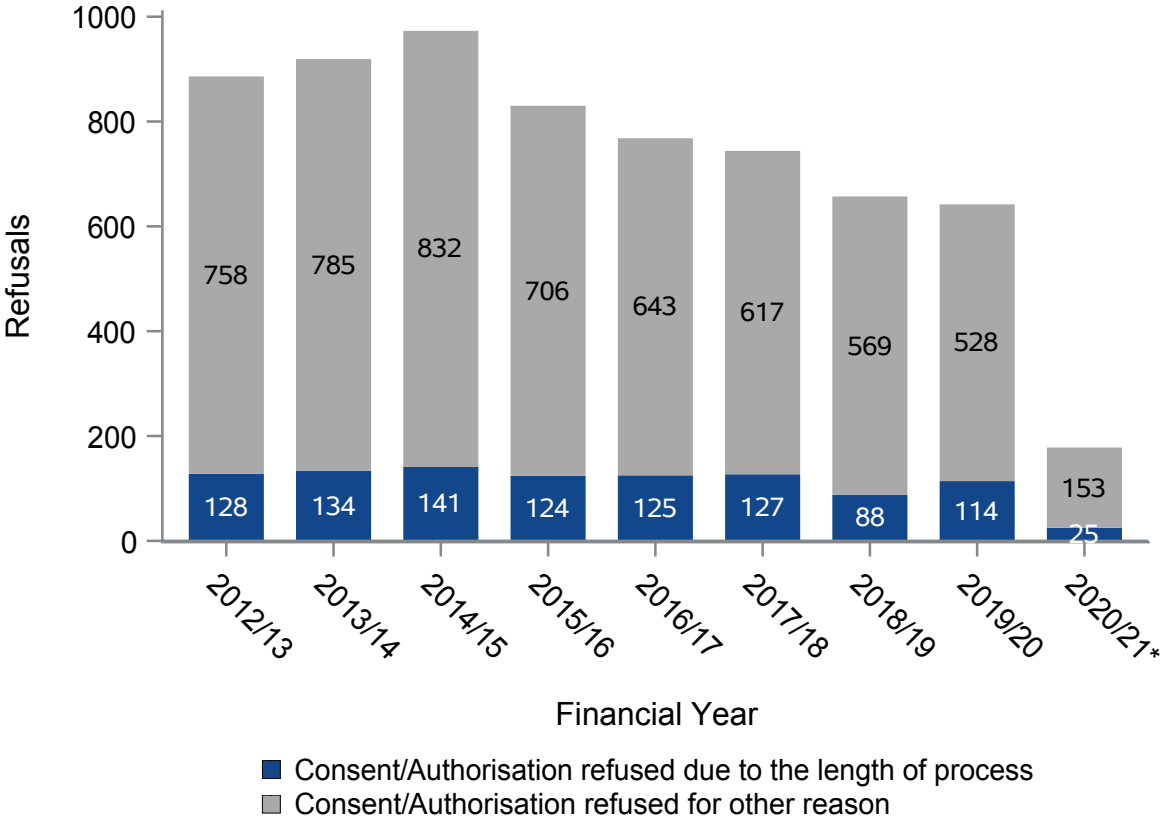
Table 1 Approaches and refusals in 2020/201 (Apr-Sep)						
Team name	Eligible DBD Donors			Eligible DCD Donors		
	Organ donation discussions	Organ donation not supported	Not supported due to length of process	Organ donation discussions	Organ donation not supported	Not supported due to length of process
Eastern	46	10	0	65	26	3
London	87	39	0	39	15	1
Midlands	75	25	2	76	32	4
North West	72	11	1	55	16	2
Northern	39	9	1	30	7	2
Northern Ireland	25	4	2	13	4	2
Scotland	43	7	1	38	16	2
South Central	48	9	0	32	13	2
South East	68	16	0	43	16	1
South Wales	22	8	0	11	4	2
South West	42	5	0	30	11	2
Yorkshire	37	8	0	48	18	2

**Figure 3 - Family refusals where organ donation discussion occurred, eligible DBD
1 April 2012 - 30 September 2020**



*April-September only

**Figure 4 - Family refusals where organ donation discussion occurred, eligible DCD
1 April 2012 - 30 September 2020**



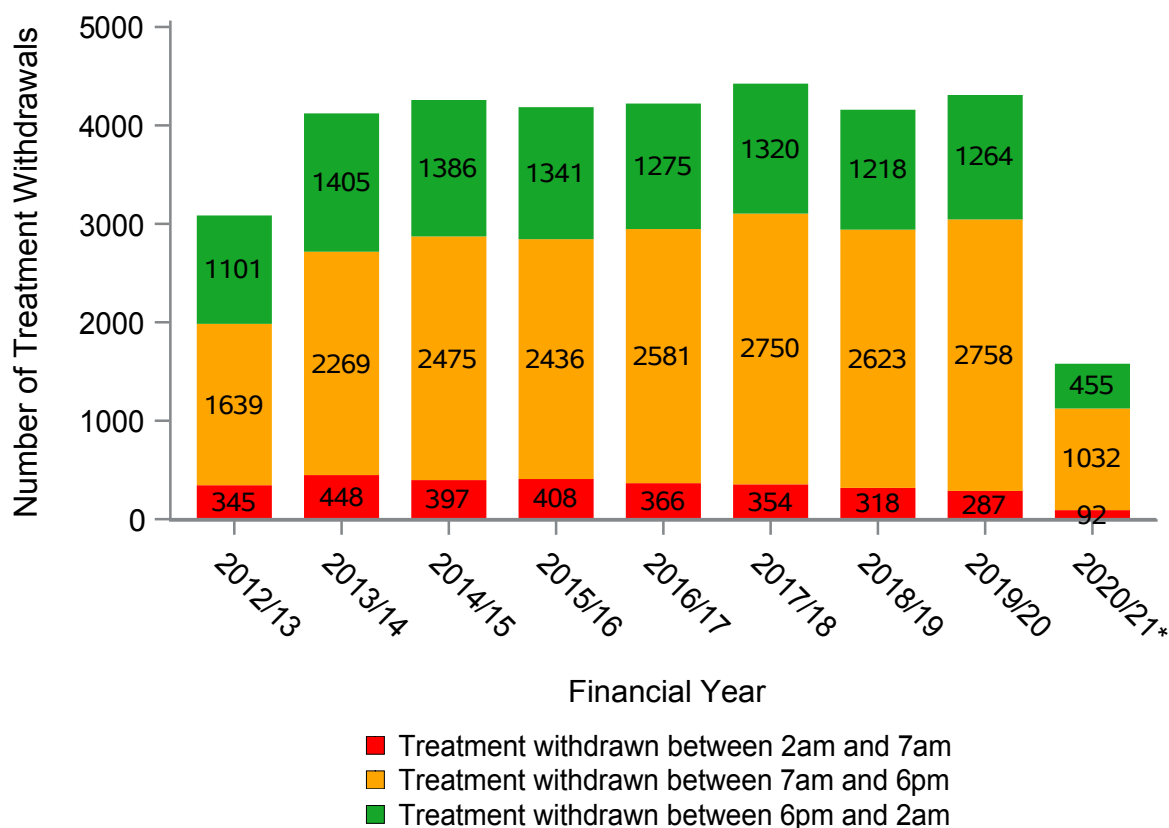
*April-September only

Withdrawal of life sustaining treatment (WLST)

Table 2 WLST timings 2020/201 (Apr-Sep)

Team name	Treatment withdrawn	Treatment withdrawn between 2am and 7am	
		N	%
Eastern	214	9	4
London	124	7	6
Midlands	223	16	7
North West	240	13	5
Northern	119	9	8
Northern Ireland	35	1	3
Scotland	101	5	5
South Central	105	8	8
South East	122	9	7
South Wales	32	1	3
South West	84	4	5
Yorkshire	180	10	6

Figure 5 - Timings of WLST, 1 April 2012 - 30 September 2020

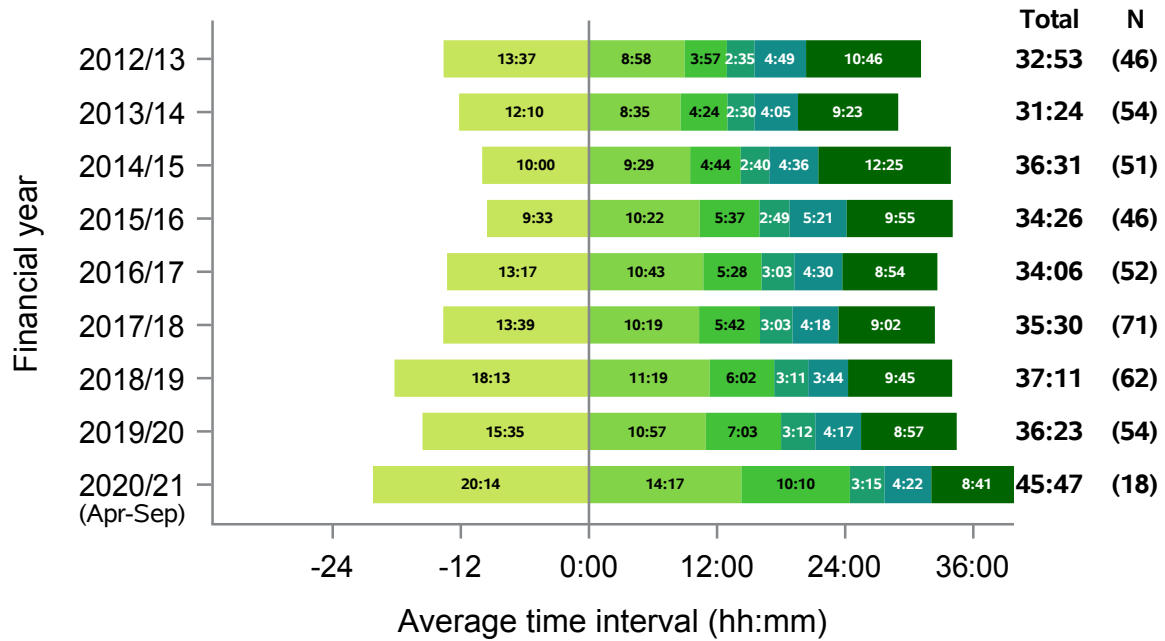


*April-September only

Data by Organ Donation Services Team

Eastern

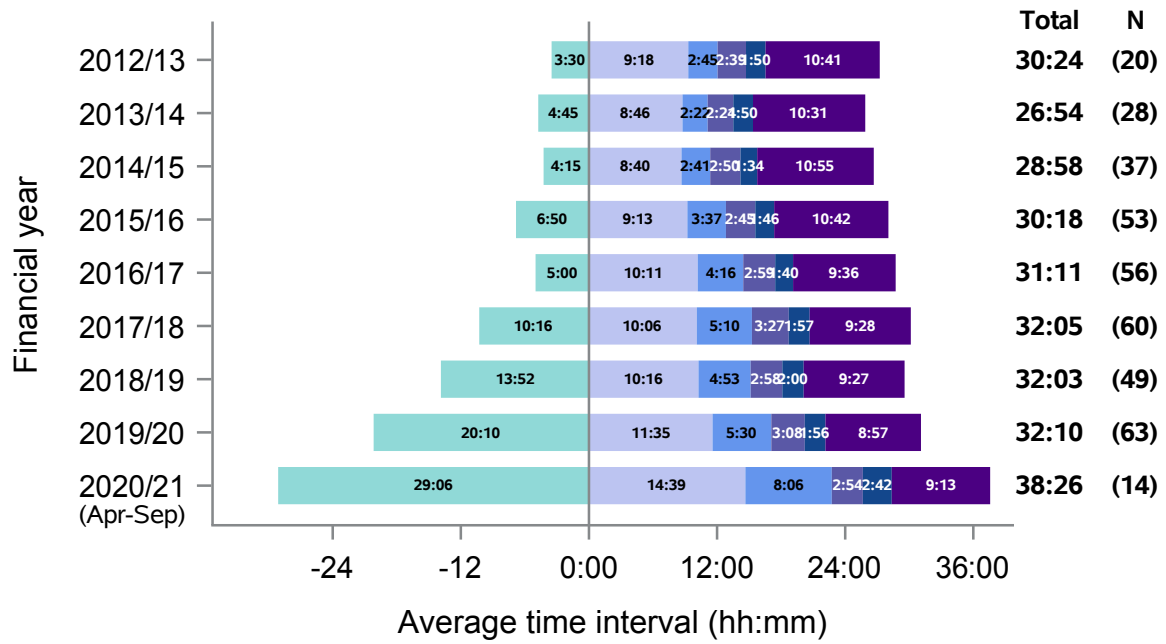
Figure 6 - Median times of DBD organ donation process, Eastern, 1 April 2012 - 30 September 2020



- Median time from:**
- Referral to approach
 - Approach to first kidney matching run
 - First kidney matching run to first NORS team departure
 - NORS team departure from base to retrieval operation start
 - Retrieval operation start to operation end
 - Retrieval operation end to kidney perfusion with recipient blood

Eastern

Figure 7 - Median times of DCD organ donation process, Eastern, 1 April 2012 - 30 September 2020

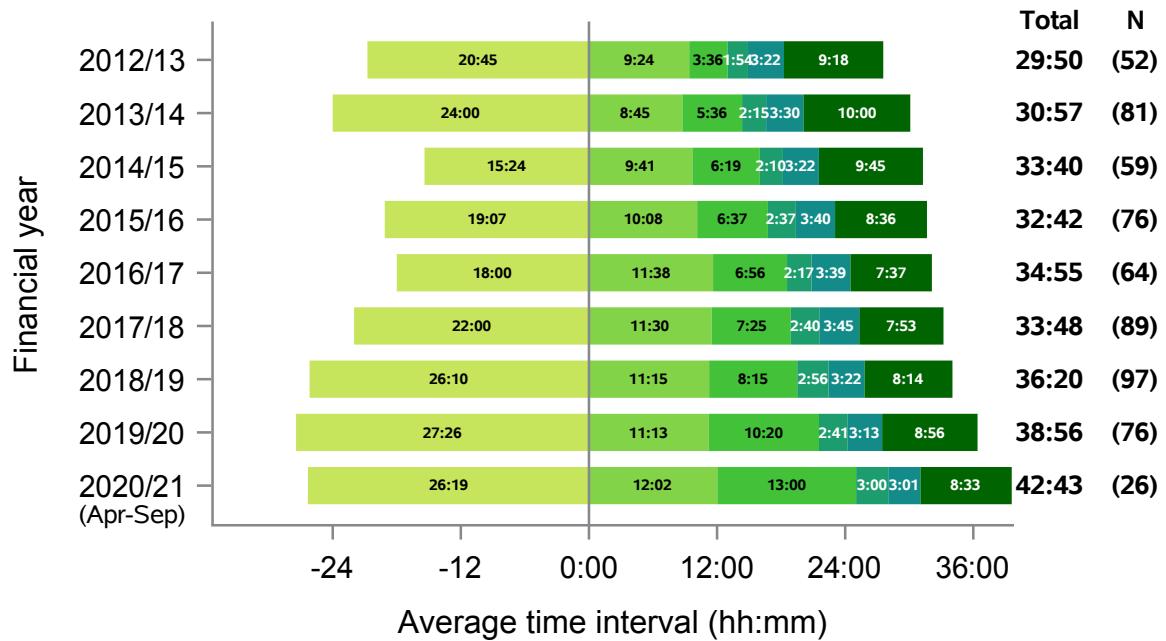


Median time from:

- Referral to approach
- Approach to first kidney matching run
- First kidney matching run to first NORS team departure
- NORS team departure from base to retrieval operation start
- Retrieval operation start to operation end
- Retrieval operation end to kidney perfusion with recipient blood

London

Figure 8 - Median times of DBD organ donation process, London, 1 April 2012 - 30 September 2020

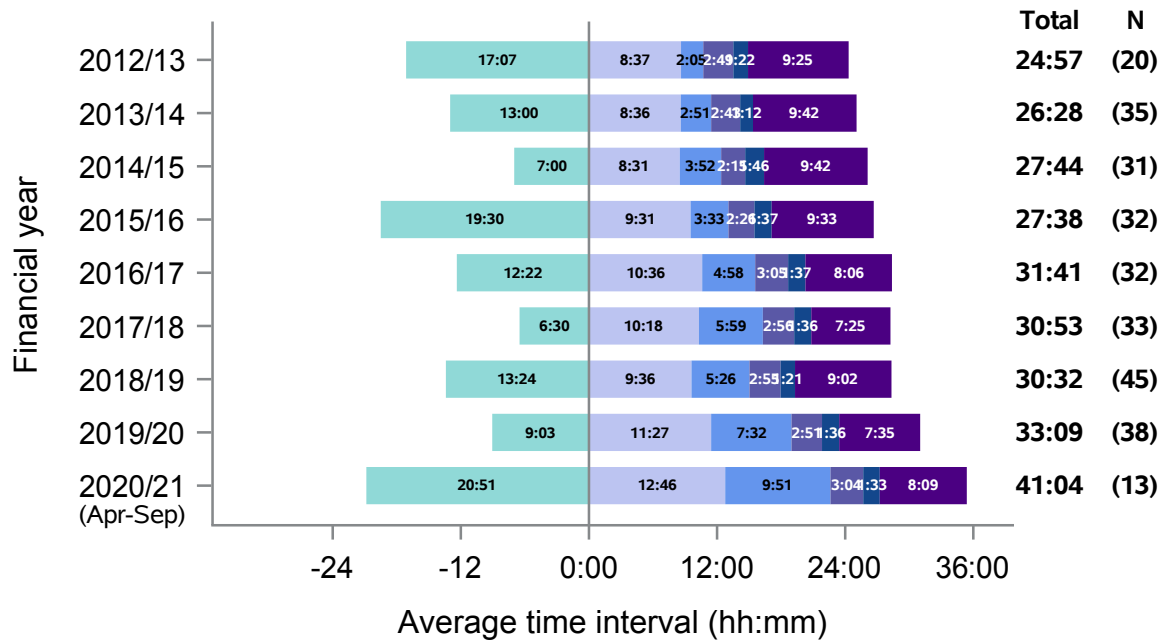


Median time from:

- Referral to approach
- Approach to first kidney matching run
- First kidney matching run to first NORS team departure
- NORS team departure from base to retrieval operation start
- Retrieval operation start to operation end
- Retrieval operation end to kidney perfusion with recipient blood

London

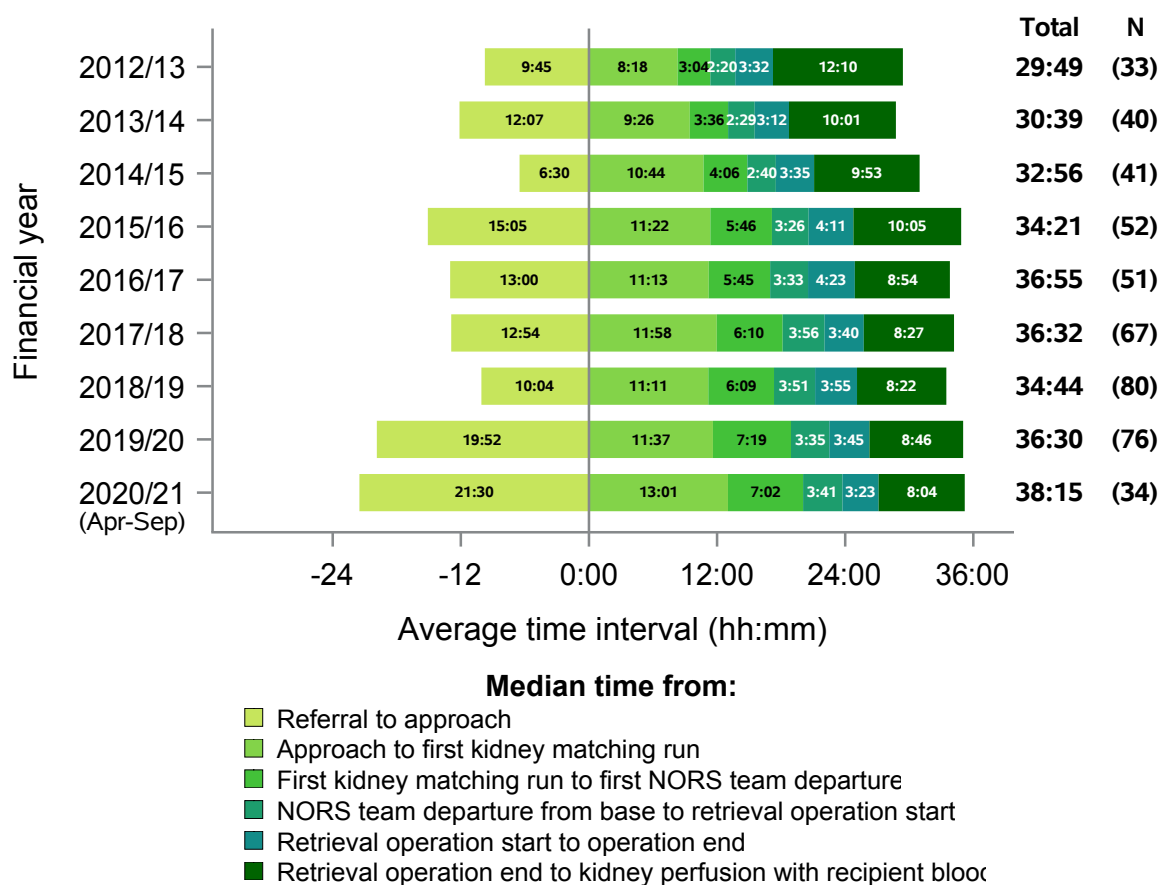
Figure 9 - Median times of DCD organ donation process, London, 1 April 2012 - 30 September 2020



- Median time from:**
- Referral to approach
 - Approach to first kidney matching run
 - First kidney matching run to first NORS team departure
 - NORS team departure from base to retrieval operation start
 - Retrieval operation start to operation end
 - Retrieval operation end to kidney perfusion with recipient blood

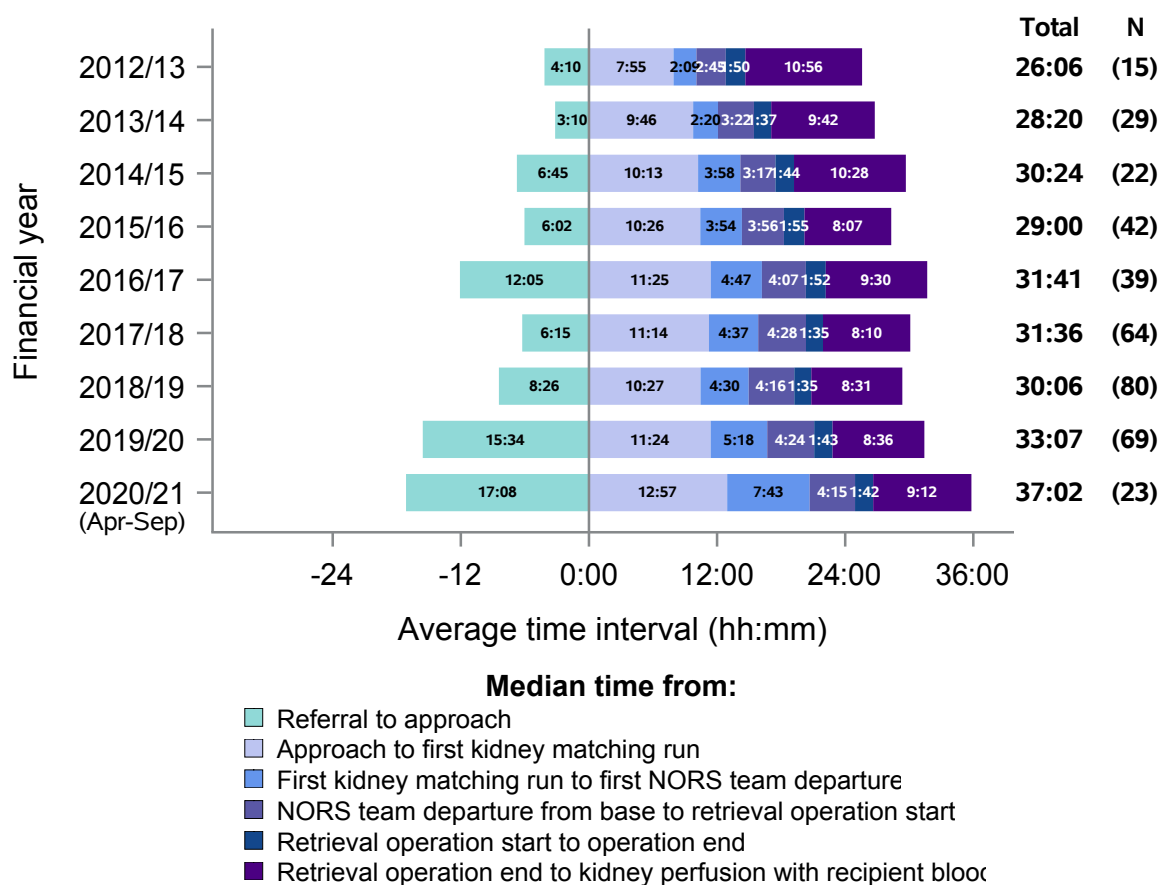
Midlands

Figure 10 - Median times of DBD organ donation process, Midlands, 1 April 2012 - 30 September 2020



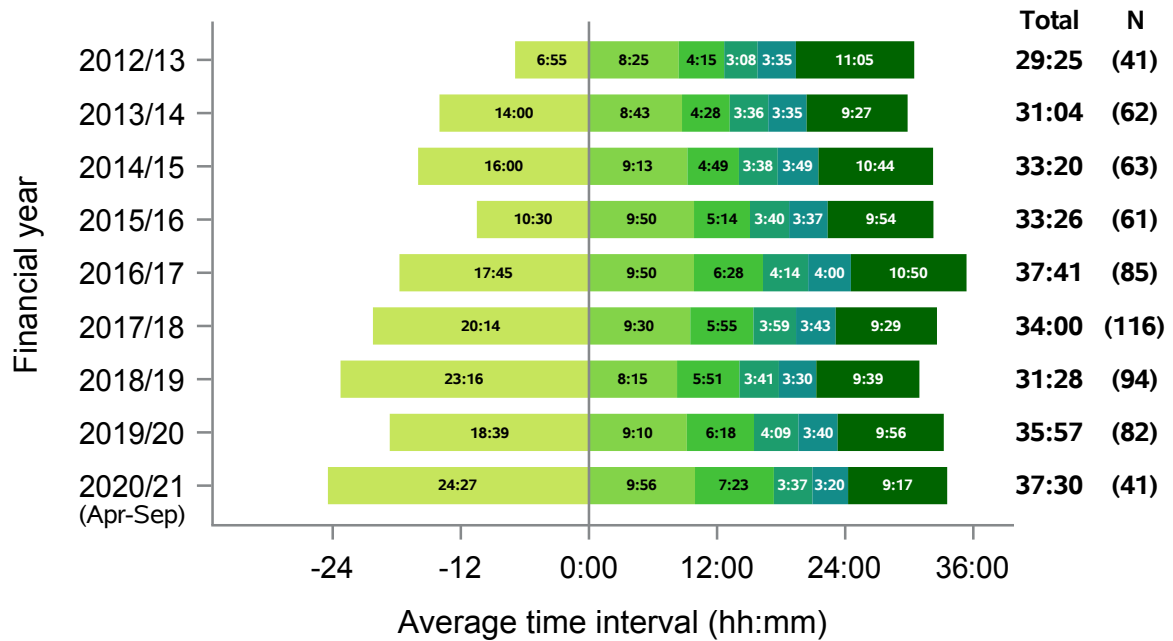
Midlands

Figure 11 - Median times of DCD organ donation process, Midlands, 1 April 2012 - 30 September 2020



North West

Figure 12 - Median times of DBD organ donation process, North West, 1 April 2012 - 30 September 2020

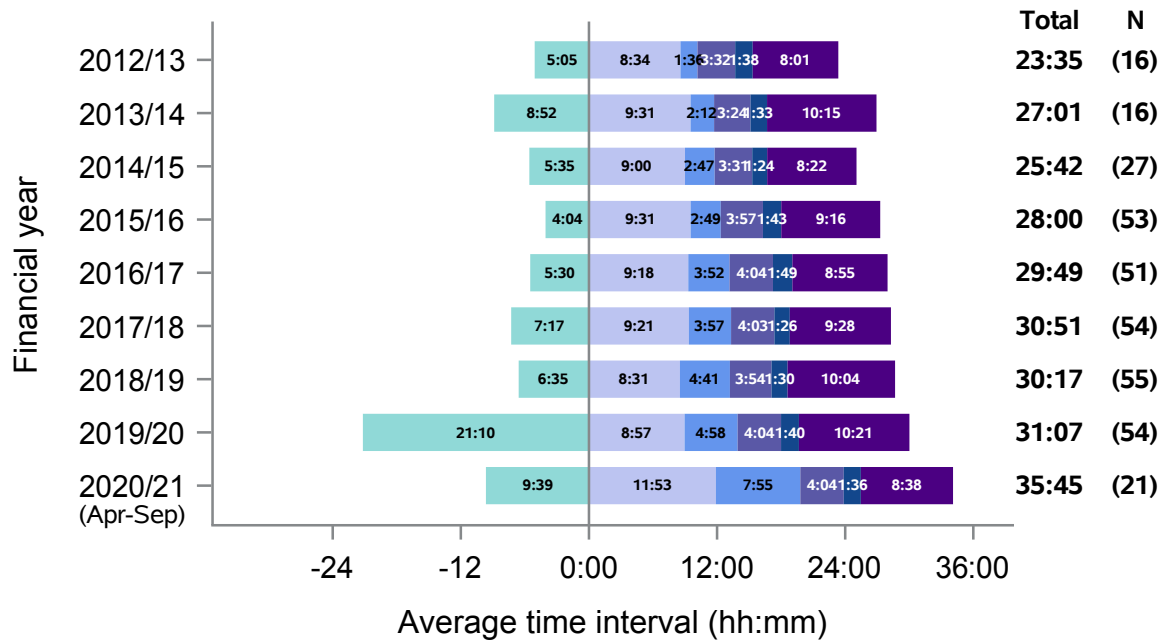


Median time from:

- Referral to approach
- Approach to first kidney matching run
- First kidney matching run to first NORS team departure
- NORS team departure from base to retrieval operation start
- Retrieval operation start to operation end
- Retrieval operation end to kidney perfusion with recipient blood

North West

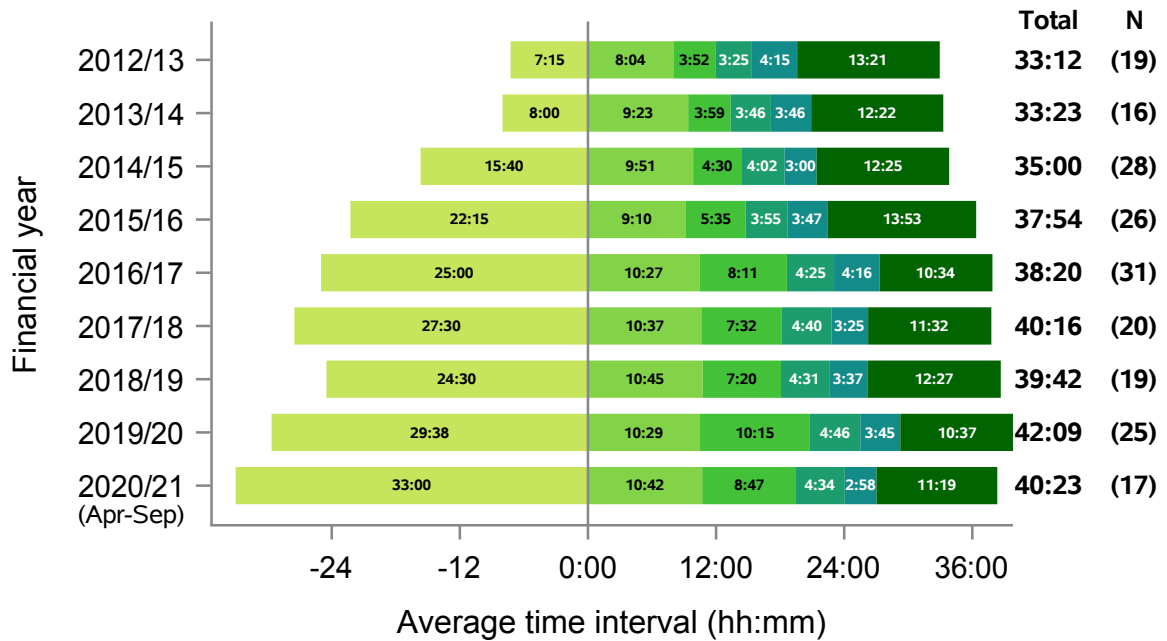
Figure 13 - Median times of DCD organ donation process, North West, 1 April 2012 - 30 September 2020



- Median time from:**
- Referral to approach
 - Approach to first kidney matching run
 - First kidney matching run to first NORS team departure
 - NORS team departure from base to retrieval operation start
 - Retrieval operation start to operation end
 - Retrieval operation end to kidney perfusion with recipient blood

Northern Ireland

Figure 14 - Median times of DBD organ donation process, Northern Ireland, 1 April 2012 - 30 September 2020

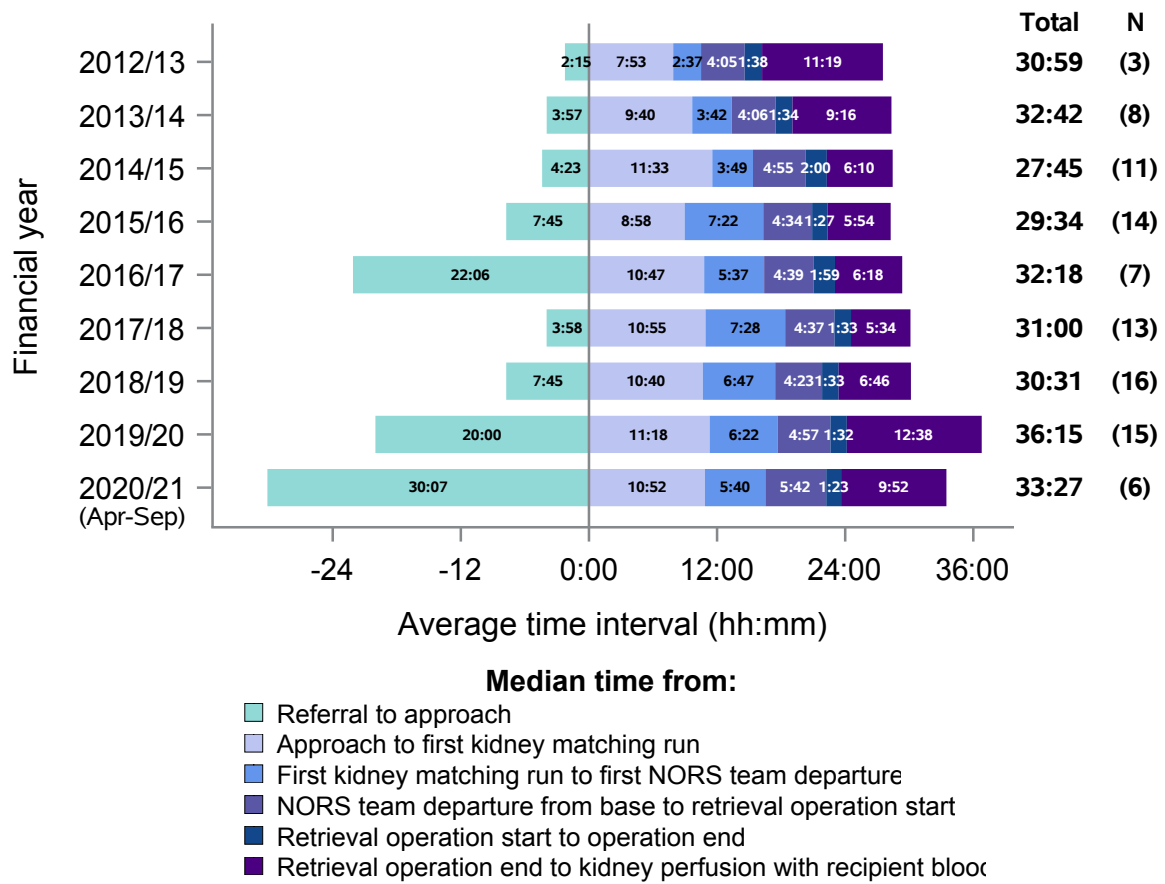


Median time from:

- Referral to approach
- Approach to first kidney matching run
- First kidney matching run to first NORS team departure
- NORS team departure from base to retrieval operation start
- Retrieval operation start to operation end
- Retrieval operation end to kidney perfusion with recipient blood

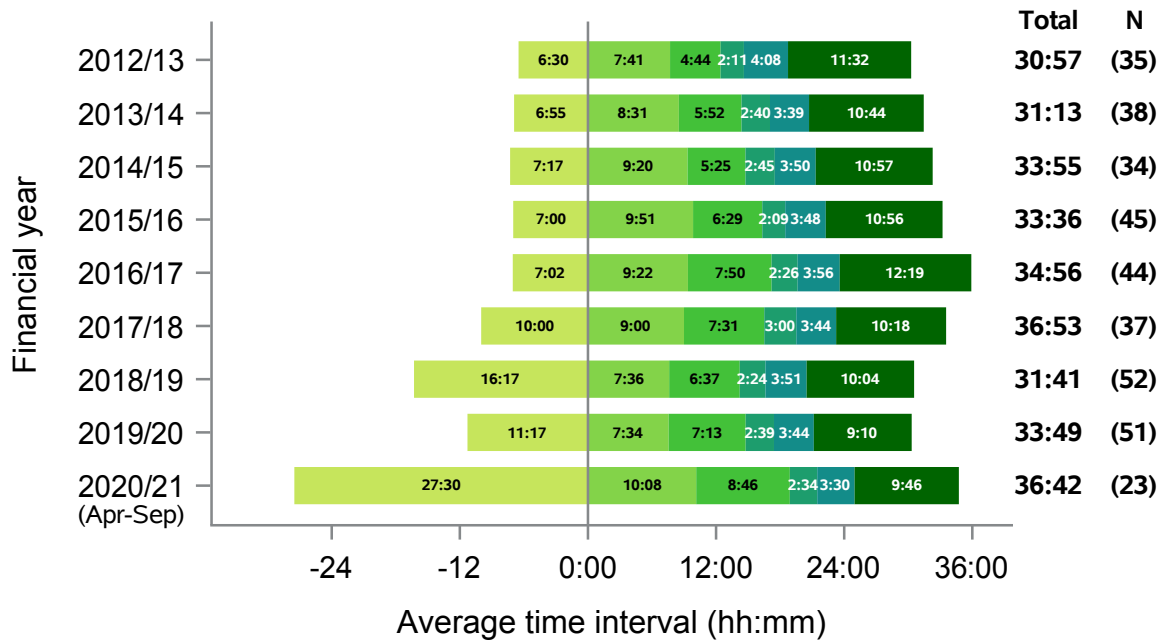
Northern Ireland

Figure 15 - Median times of DCD organ donation process, Northern Ireland, 1 April 2012 - 30 September 2020



Northern

Figure 16 - Median times of DBD organ donation process, Northern, 1 April 2012 - 30 September 2020

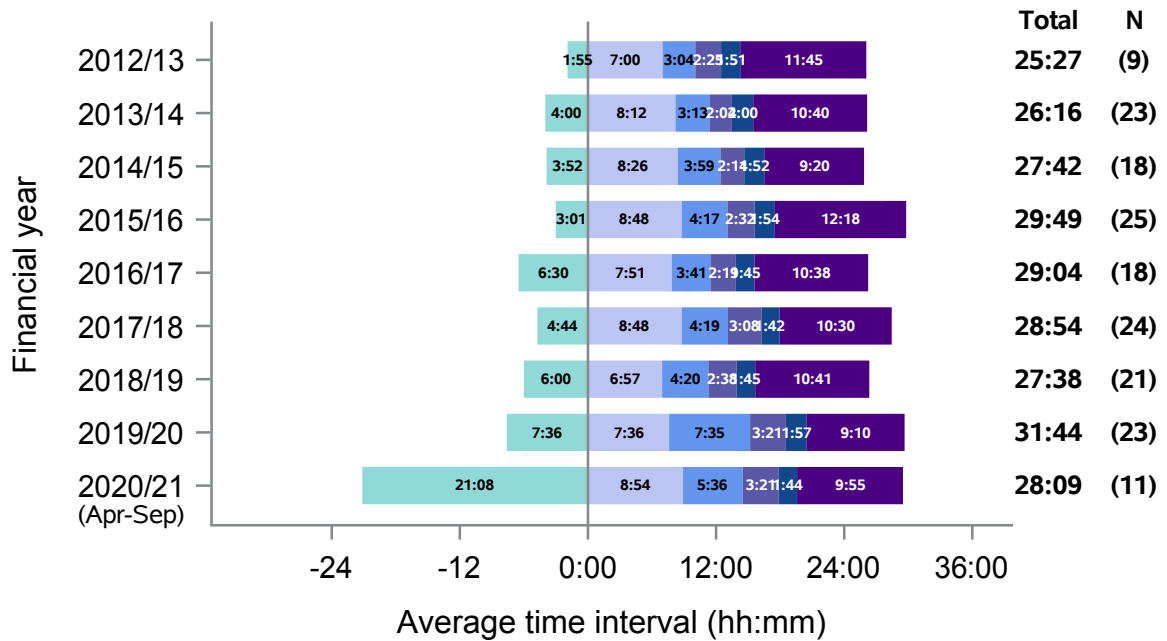


Median time from:

- Referral to approach
- Approach to first kidney matching run
- First kidney matching run to first NORS team departure
- NORS team departure from base to retrieval operation start
- Retrieval operation start to operation end
- Retrieval operation end to kidney perfusion with recipient blood

Northern

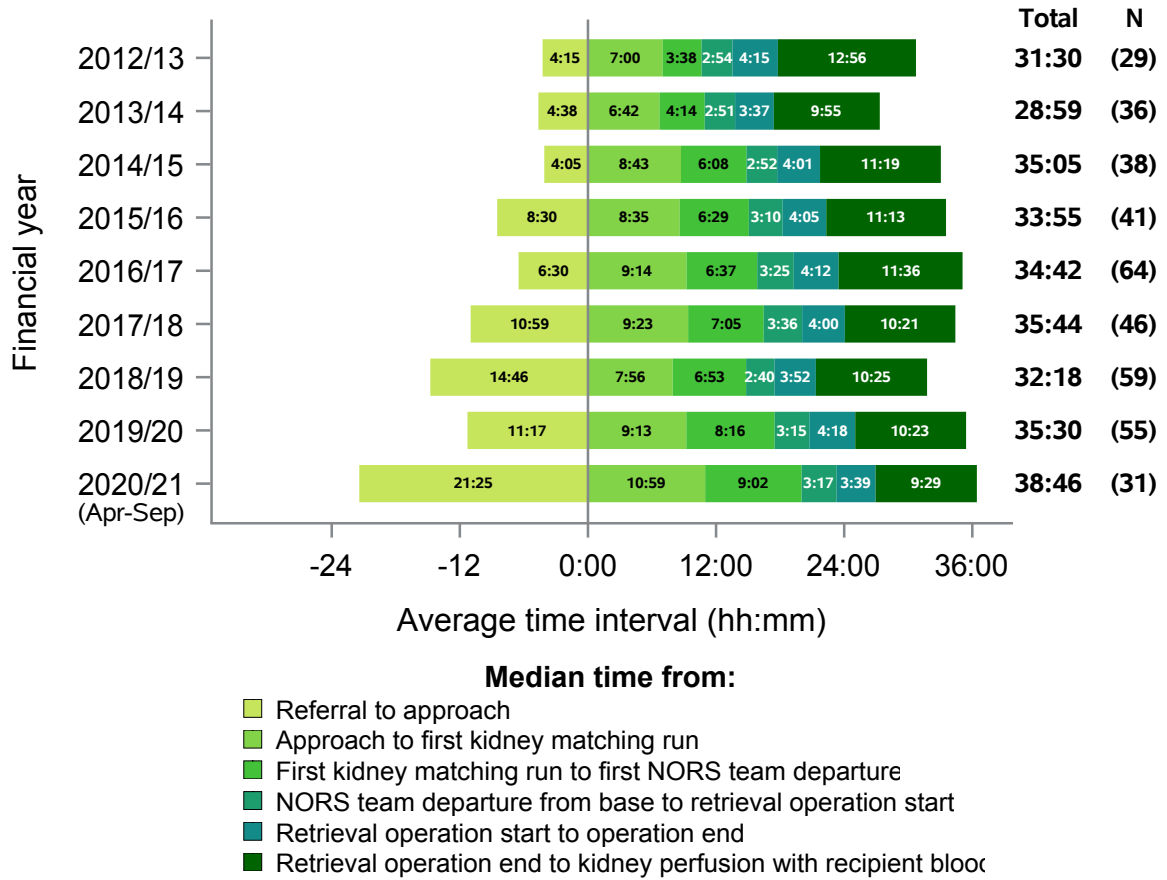
Figure 17 - Median times of DCD organ donation process, Northern, 1 April 2012 - 30 September 2020



- Median time from:**
- Referral to approach
 - Approach to first kidney matching run
 - First kidney matching run to first NORS team departure
 - NORS team departure from base to retrieval operation start
 - Retrieval operation start to operation end
 - Retrieval operation end to kidney perfusion with recipient blood

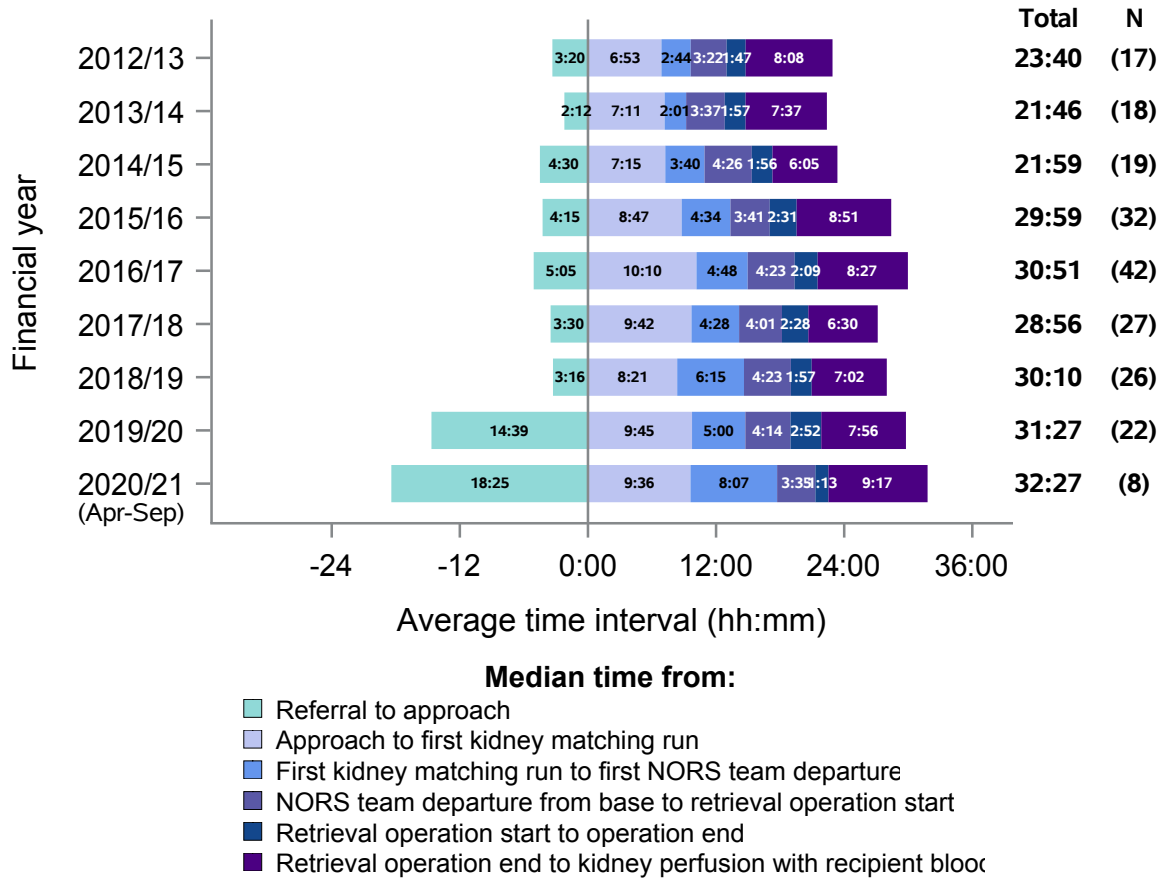
Scotland

Figure 18 - Median times of DBD organ donation process, Scotland, 1 April 2012 - 30 September 2020



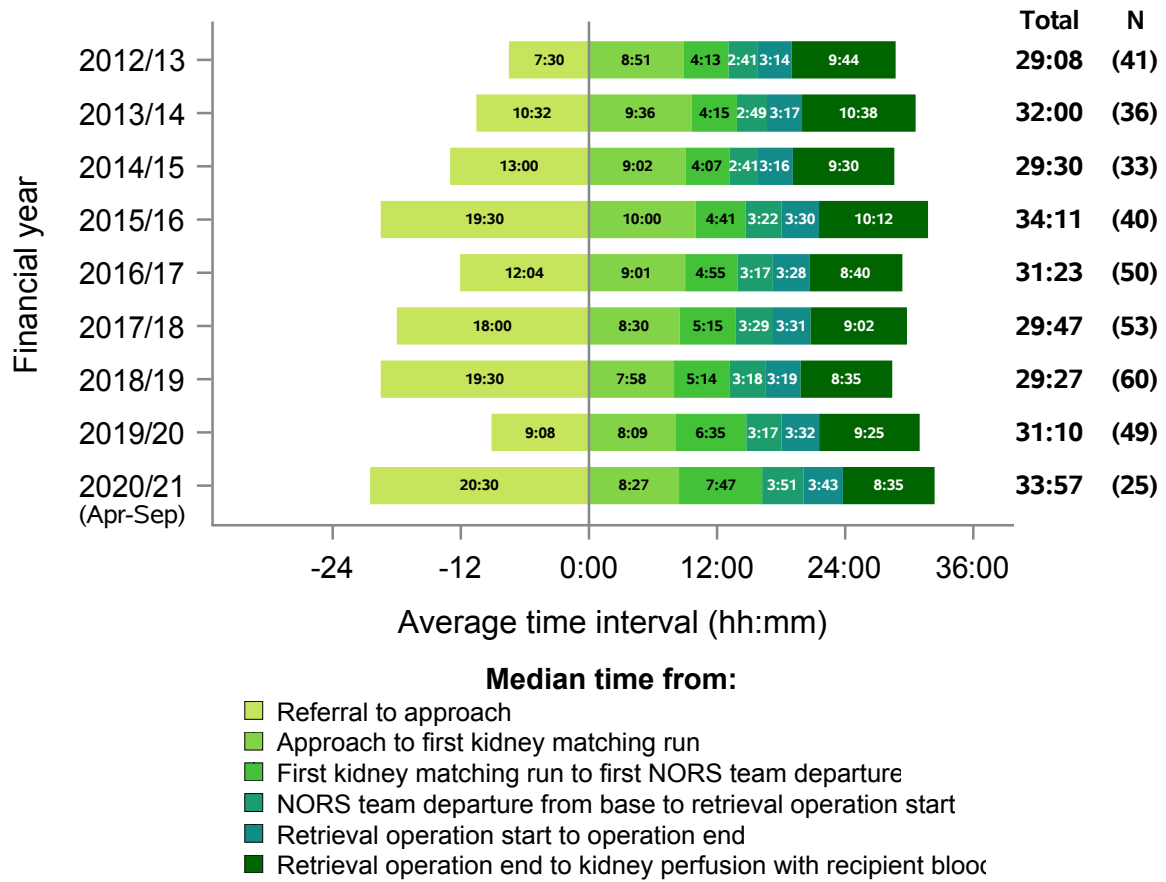
Scotland

Figure 19 - Median times of DCD organ donation process, Scotland, 1 April 2012 - 30 September 2020



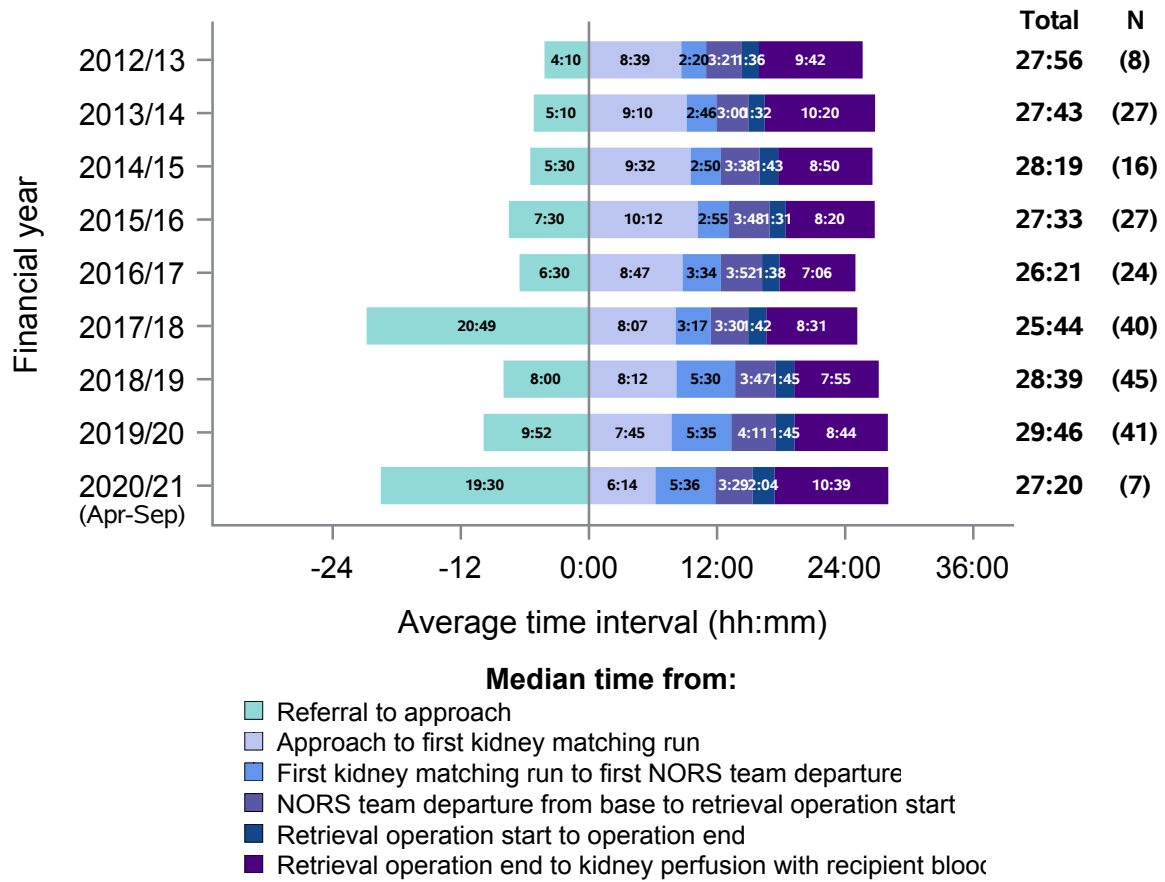
South Central

Figure 20 - Median times of DBD organ donation process, South Central, 1 April 2012 - 30 September 2020



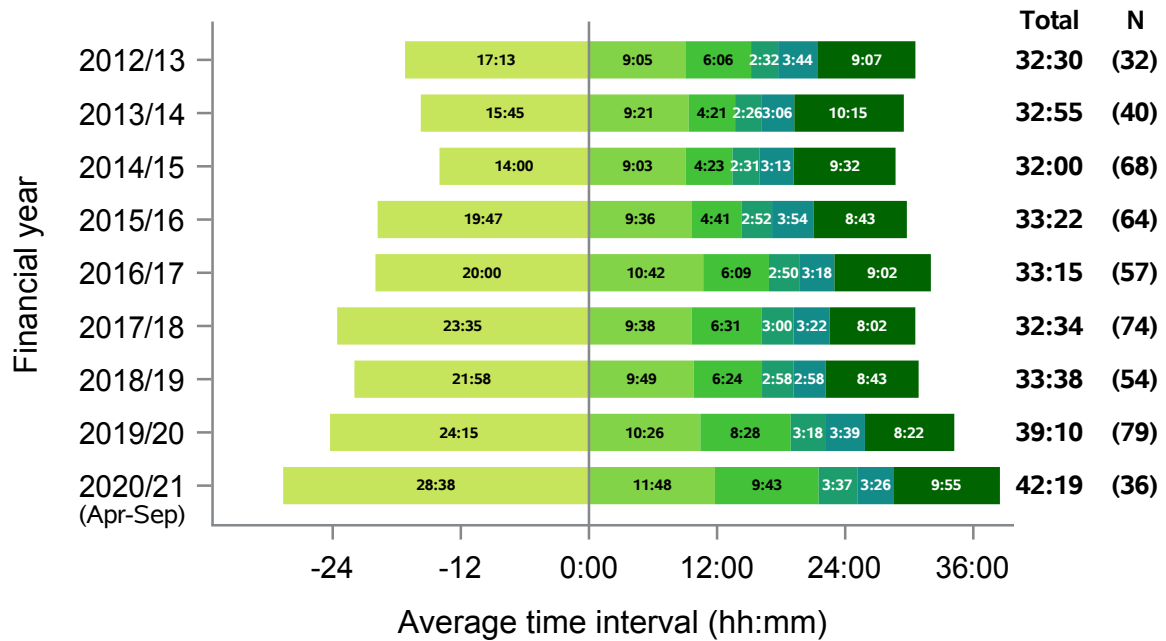
South Central

Figure 21 - Median times of DCD organ donation process, South Central, 1 April 2012 - 30 September 2020



South East

Figure 22 - Median times of DBD organ donation process, South East, 1 April 2012 - 30 September 2020

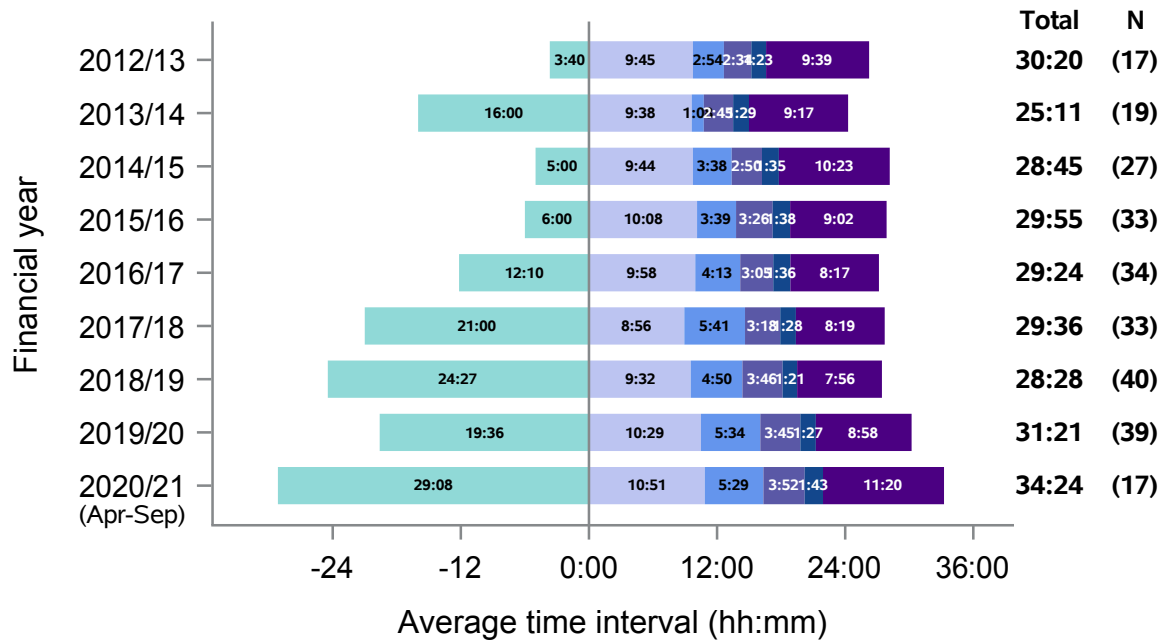


Median time from:

- Referral to approach
- Approach to first kidney matching run
- First kidney matching run to first NORS team departure
- NORS team departure from base to retrieval operation start
- Retrieval operation start to operation end
- Retrieval operation end to kidney perfusion with recipient blood

South East

Figure 23 - Median times of DCD organ donation process, South East, 1 April 2012 - 30 September 2020

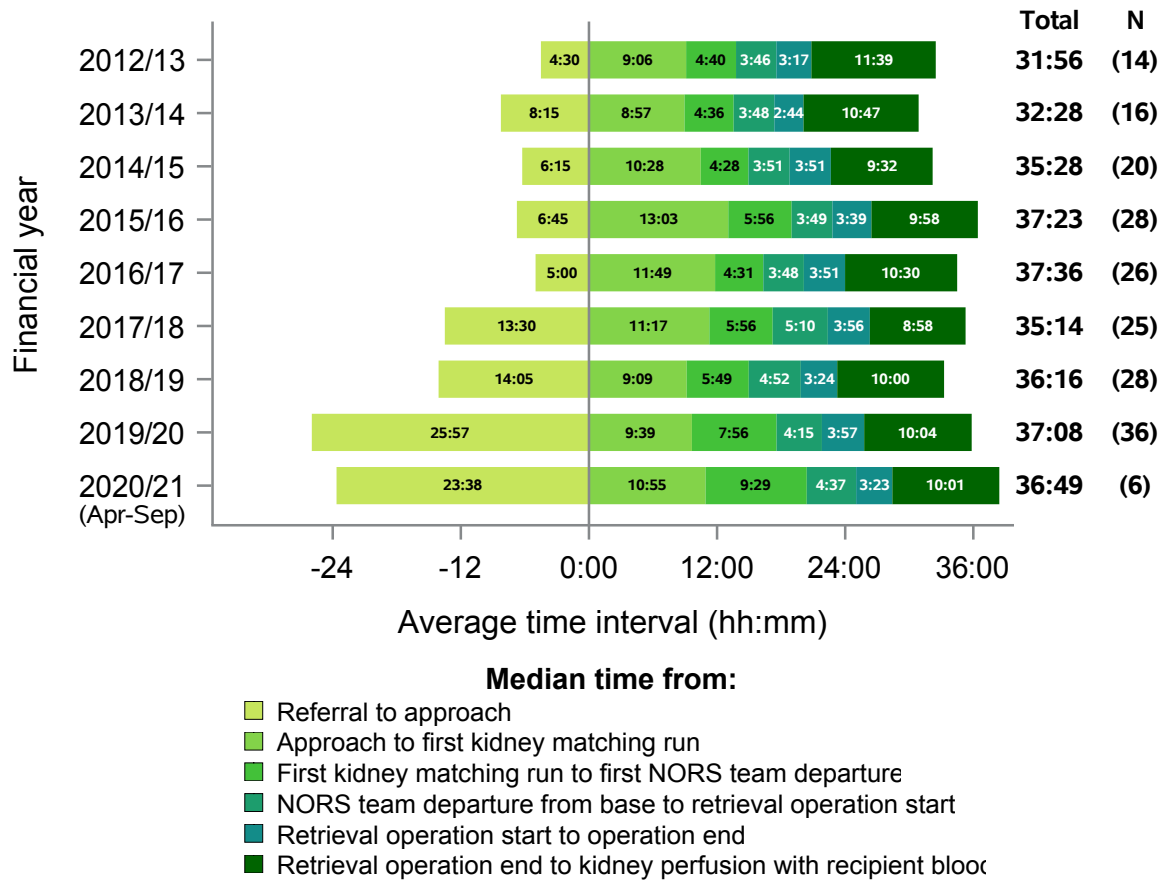


Median time from:

- Referral to approach
- Approach to first kidney matching run
- First kidney matching run to first NORS team departure
- NORS team departure from base to retrieval operation start
- Retrieval operation start to operation end
- Retrieval operation end to kidney perfusion with recipient blood

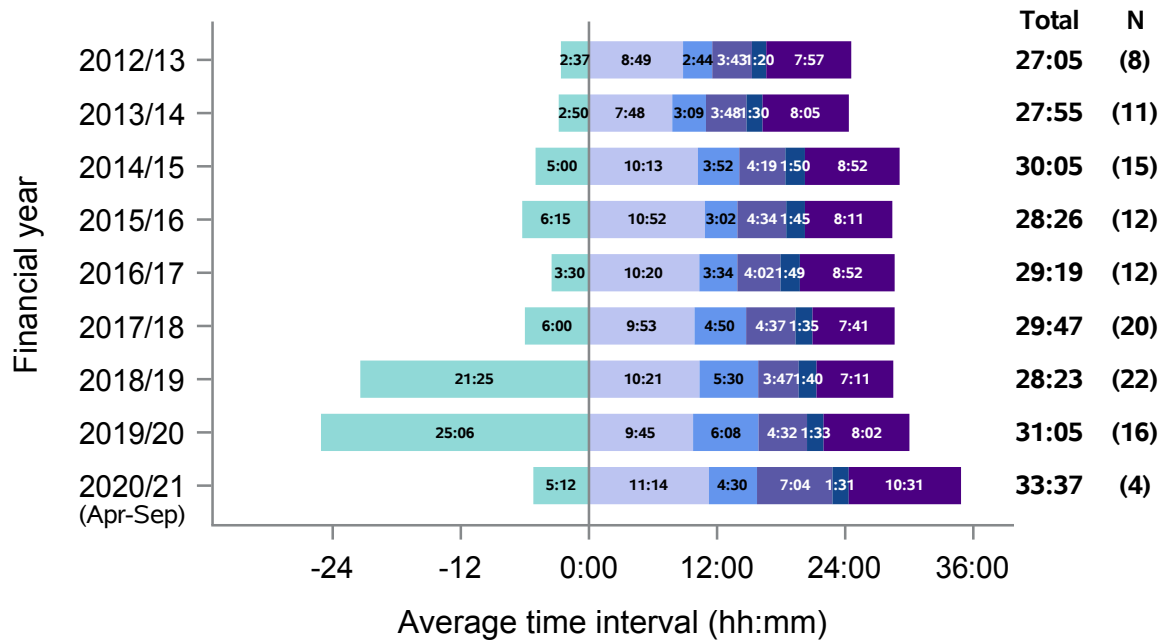
South Wales

Figure 24 - Median times of DBD organ donation process, South Wales, 1 April 2012 - 30 September 2020



South Wales

Figure 25 - Median times of DCD organ donation process, South Wales, 1 April 2012 - 30 September 2020

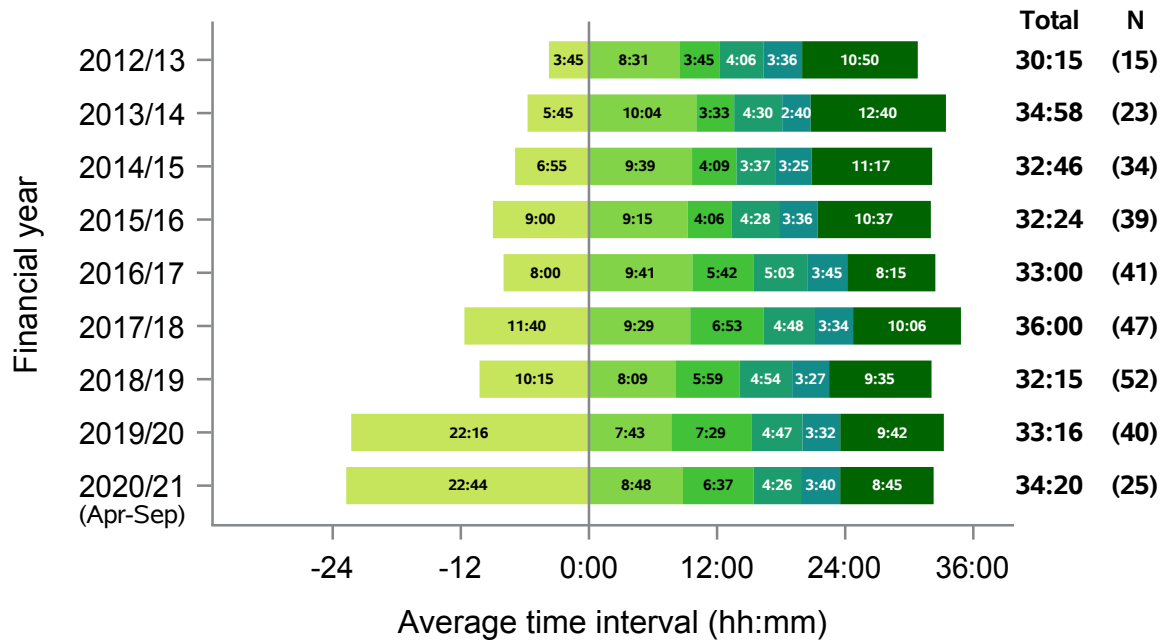


Median time from:

- Referral to approach
- Approach to first kidney matching run
- First kidney matching run to first NORS team departure
- NORS team departure from base to retrieval operation start
- Retrieval operation start to operation end
- Retrieval operation end to kidney perfusion with recipient blood

South West

Figure 26 - Median times of DBD organ donation process, South West, 1 April 2012 - 30 September 2020

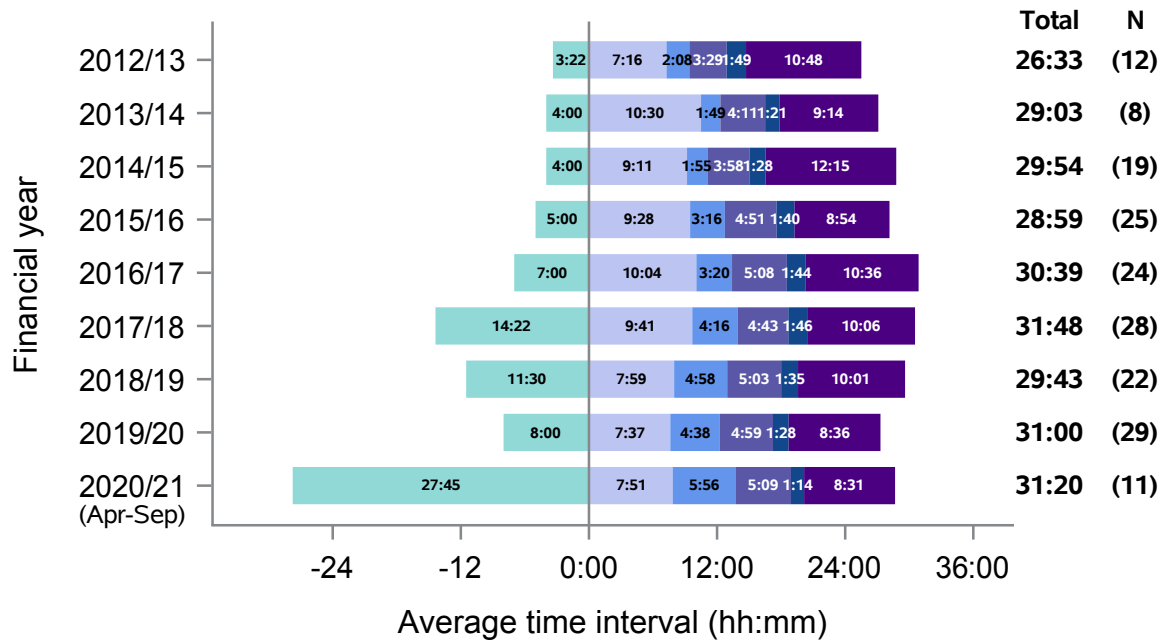


Median time from:

- Referral to approach
- Approach to first kidney matching run
- First kidney matching run to first NORS team departure
- NORS team departure from base to retrieval operation start
- Retrieval operation start to operation end
- Retrieval operation end to kidney perfusion with recipient blood

South West

Figure 27 - Median times of DCD organ donation process, South West, 1 April 2012 - 30 September 2020

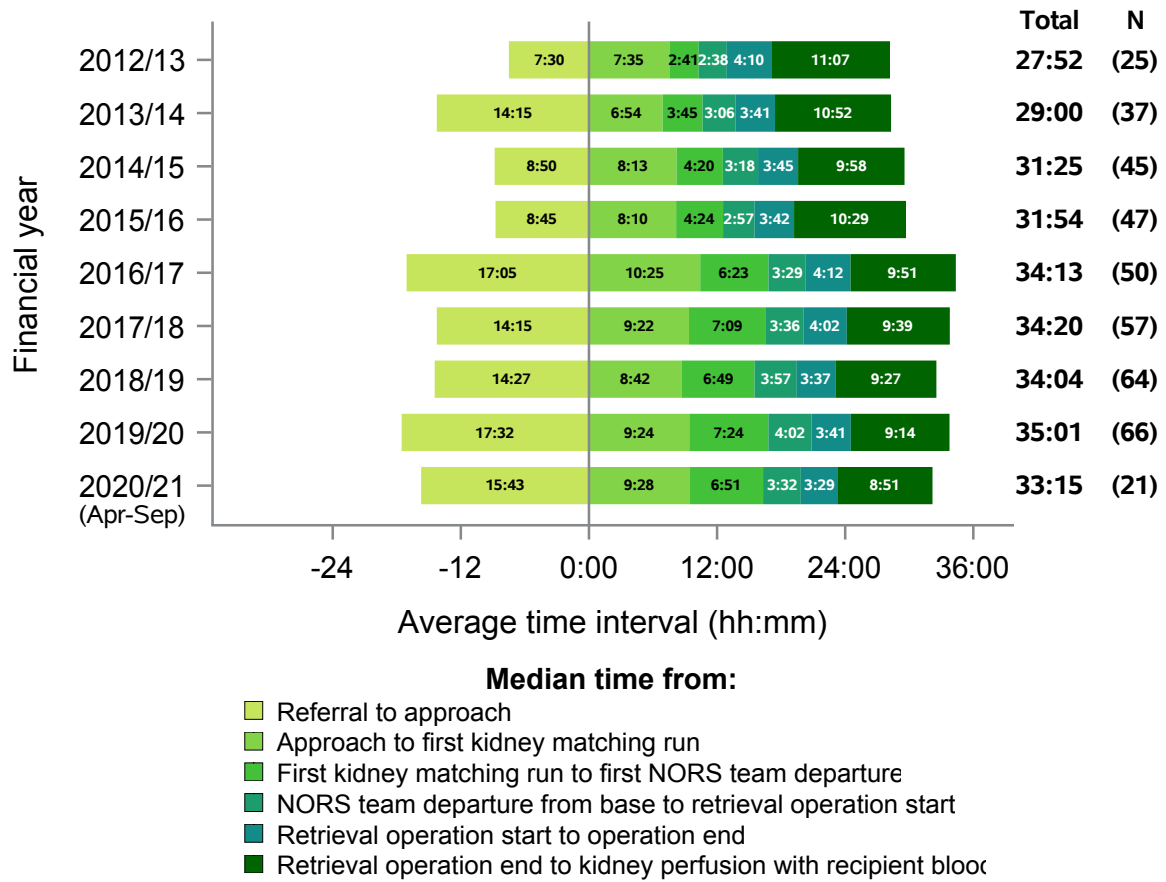


Median time from:

- Referral to approach
- Approach to first kidney matching run
- First kidney matching run to first NORS team departure
- NORS team departure from base to retrieval operation start
- Retrieval operation start to operation end
- Retrieval operation end to kidney perfusion with recipient blood

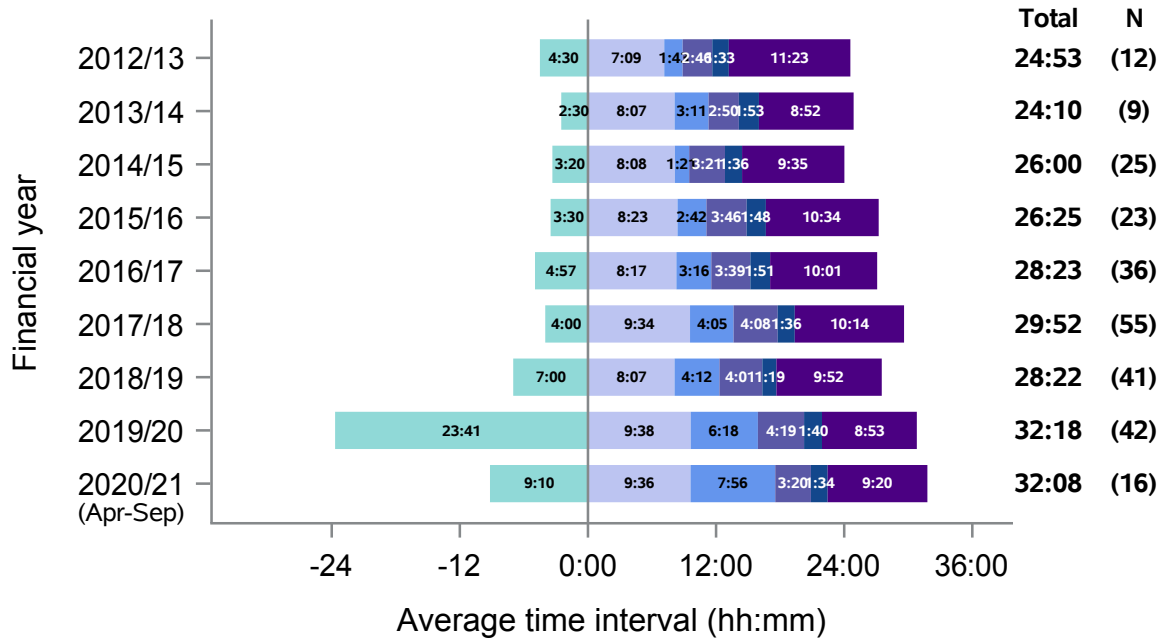
Yorkshire

Figure 28 - Median times of DBD organ donation process, Yorkshire, 1 April 2012 - 30 September 2020



Yorkshire

Figure 29 - Median times of DCD organ donation process, Yorkshire, 1 April 2012 - 30 September 2020



- Median time from:**
- Referral to approach
 - Approach to first kidney matching run
 - First kidney matching run to first NORS team departure
 - NORS team departure from base to retrieval operation start
 - Retrieval operation start to operation end
 - Retrieval operation end to kidney perfusion with recipient blood

Table 3 Summary of Organ Donation Services Teams median timings, DBD, 2020/201 (Apr-Sep)

Team name	Referral to approach	Approach to first kidney matching run	First kidney matching run to first NORS team departure	NORS team departure from base to retrieval operation start	Retrieval operation start to operation end	Retrieval operation end to kidney perfusion with recipient blood
Eastern	20:14	14:17	10:10	3:15	4:22	8:41
London	26:19	12:02	13:00	3:00	3:01	8:33
Midlands	21:30	13:01	7:02	3:41	3:23	8:04
Northern	27:30	10:08	8:46	2:34	3:30	9:46
Northern Ireland	33:00	10:42	8:47	4:34	2:58	11:19
North West	24:27	9:56	7:23	3:37	3:20	9:17
Scotland	21:25	10:59	9:02	3:17	3:39	9:29
South Central	20:30	8:27	7:47	3:51	3:43	8:35
South East	28:38	11:48	9:43	3:37	3:26	9:55
South Wales	23:38	10:55	9:29	4:37	3:23	10:01
South West	22:44	8:48	6:37	4:26	3:40	8:45
Yorkshire	15:43	9:28	6:51	3:32	3:29	8:51

Table 4 Summary of Organ Donation Services Teams median timings, DCD, 2020/201 (Apr-Sep)

Team name	Referral to approach	Approach to first kidney matching run	First kidney matching run to first NORS team departure	NORS team departure from base to operation start	Operation start to operation end	Operation end to kidney perfusion with recipient's blood
Eastern	29:06	14:39	8:06	2:54	2:42	9:13
London	20:51	12:46	9:51	3:04	1:33	8:09
Midlands	17:08	12:57	7:43	4:15	1:42	9:12
Northern	21:08	8:54	5:36	3:21	1:44	9:55
Northern Ireland	30:07	10:52	5:40	5:42	1:23	9:52
North West	9:39	11:53	7:55	4:04	1:36	8:38
Scotland	18:25	9:36	8:07	3:35	1:13	9:17
South Central	19:30	6:14	5:36	3:29	2:04	10:39
South East	29:08	10:51	5:29	3:52	1:43	11:20
South Wales	5:12	11:14	4:30	7:04	1:31	10:31
South West	27:45	7:51	5:56	5:09	1:14	8:31
Yorkshire	9:10	9:36	7:56	3:20	1:34	9:20