

NHS BLOOD AND TRANSPLANT

MULTI-VISCERAL AND COMPOSITE TISSUE ADVISORY GROUP

SUMMARY FROM STATISTICS AND CLINICAL STUDIES

INTRODUCTION

- 1 This paper provides an update from Statistics and Clinical Studies and summarises current and future work in the area of multi-visceral and composite tissue transplantation.

UPDATE FROM STATISTICS AND CLINICAL STUDIES

- 2 New and updated reports, all Advisory Group papers and conference presentations continue to be posted on the OTDT Clinical Site www.odt.nhs.uk.
- 3 Please note our current arrangements for staff responsibilities in support of organs and tissues.

Area	Lead	Contact
Head of Organ and Tissue Donation and Transplantation Studies	Lisa Mumford	lisa.mumford@nhsbt.nhs.uk
Organ donation	Susanna Madden	susanna.madden@nhsbt.nhs.uk
Organ retrieval	Rachel Hogg	rachel.hogg@nhsbt.nhs.uk
Ocular tissue	Cathy Hopkinson	cathy.hopkinson@nhsbt.nhs.uk
Organ utilisation	Susanna Madden	susanna.madden@nhsbt.nhs.uk
Enquiries		statistical.enquiries@nhsbt.nhs.uk
Kidney transplantation	Matthew Robb	matthew.robb@nhsbt.nhs.uk
Pancreas transplantation	Claire Counter	claire.counter@nhsbt.nhs.uk
Liver transplantation	Rhiannon Taylor	rhiannon.taylor@nhsbt.nhs.uk
Multi-visceral and Composite Tissue	Elisa Allen	elisa.allen@nhsbt.nhs.uk
Cardiothoracic transplantation	Sally Rushton	sally.rushton@nhsbt.nhs.uk

RECENT AND FUTURE WORK

- 4 Work has continued, in collaboration with the Winton Centre for Risk Communication, to develop a tool to support conversations between patients and clinicians at the time of listing with regards to the risks and benefits of transplantation. The lung and kidney models have been developed first and then the other organs are due to be developed shortly.
- 5 Statistics and Clinical Studies has been working with the OTDT Directorate to introduce a robust process whereby offers to intestinal Group 2 patients follow agreed policies every time. This change follows an incident whereby offering to Group 2 intestinal only recipients was missed (transplant centres involved were informed at the time).

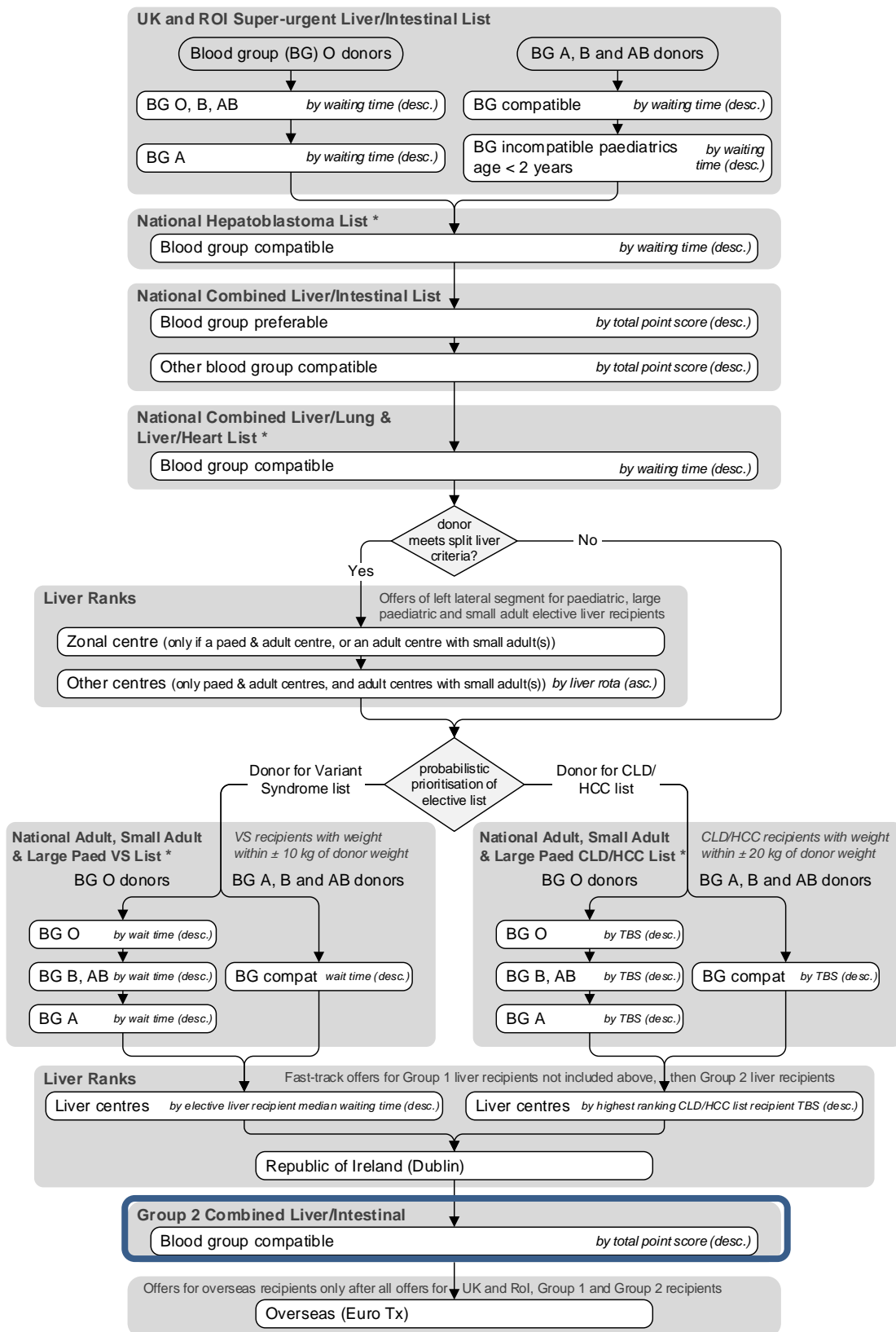
The agreed change is in line with POL196 (Deceased Donor Liver Distribution and Allocation) and POL193 (Intestinal Transplantation: Organ Allocation), and obeys time and resource limitations. It consists of introducing a 'Group 2 combined liver/intestinal' tier towards the bottom of the adult and paediatric DBD donor Liver and Intestinal matching runs (**Figure 1** and **Figure 2**). The introduction of this tier has the following implications:

- A liver transplant centre can accept a liver for a Group 2 recipient requiring liver-only at the Liver Ranks tier, providing it has been declined for all Group 1 recipients.
- As such, this means Group 2 liver-only recipients will be prioritised ahead of Group 2 liver & intestinal, and intestinal-only¹ recipients.
- Republic of Ireland will be offered a liver for Group 2 liver-only recipients before any UK-registered Group 2 intestinal-only and liver & intestinal recipients.

The change is scheduled to be released in January 2022 and monitoring of the change will commence after this date. The details of this change are presented for members' information only.

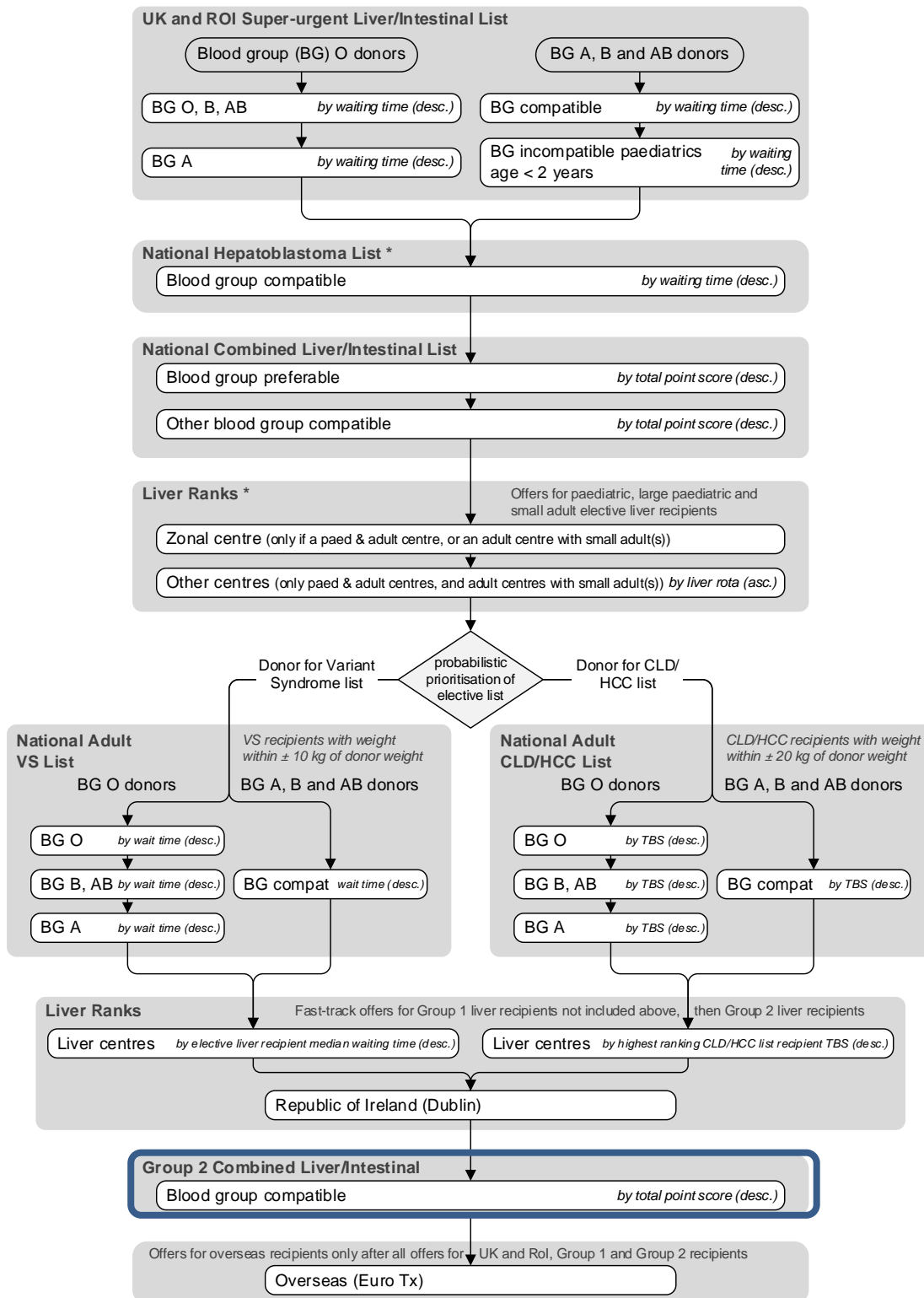
¹ Intestinal-only means not including liver. It may include other abdominal organs such as pancreas or kidney.

Figure 1. Adult DBD donor Liver and Intestinal matching run



* requirement to split if donor meets split liver criteria

Figure 2. Paediatric DBD donor Liver and Intestinal matching run



* requirement to split if donor meets split liver criteria