

Blood Stocks Management Scheme (BSMS)

Information for Transfusion Practitioners

The Blood Stocks Management Scheme (BSMS) was established in April 2001 with the aim of increasing understanding and improving blood inventory management across the supply chain.

Participation is voluntary and is open to all hospitals and blood services from the UK and Republic of Ireland whose issuing blood centre is part of the scheme. Approx. 80% who are able to are currently participating in the scheme.

VANESA is the name of the web based data management system maintained by the BSMS, where hospital and blood service data is collected.

The BSMS is a partnership between hospitals and blood services with the purpose of:

- Leading best practice in blood inventory management
- Acting as a data repository for blood product data including; issue, stock, wastage, transfusion and blood stocks movement data
- Providing real time data and charts to participants and benchmarking UK blood services and hospital performance through routine reporting
- Offering detailed analysis of the supply chain to provide guidelines and recommendations to participants

How can the BSMS help the Transfusion Practitioner?

Transfusion Practitioners are vital members of the Hospital Transfusion Committee (HTC) and are in a unique position as they act as the interface between the laboratory and the end users. A joint approach between the Transfusion Practitioner and the laboratory is required to understand and monitor hospital blood product issues and management of wastage. Hospitals can use BSMS data to benchmark against peer hospitals to understand their stock management position, initiate changes in practice, reduce wastage and promote appropriate use.

BSMS data can be presented visually and used for discussion in a variety of settings demonstrating good practice and used to evidence improvements in appropriate use and reducing wastage e.g. for HTCs, education, training, Annual Reports and meetings. BSMS data can be viewed in real time and extracted from VANESA by the Transfusion Practitioner by using a 'view only' account. Help guides are available on the VANESA platform to assist with obtaining data (see the VANESA Help section).

BSMS Data

Below are some examples of the data available using VANESA:

- Wastage as a percentage of issue (WAPI) to the hospital of red cells and platelets in both bar chart format which demonstrates the composition of wastage type and line formats (fig. 1 and fig. 2)
- Total issues for red cells and platelets by blood groups (fig. 3)
- Yearly hospital graphs comparing wastage and issues for red cells and platelets for a number of years (fig. 4)

Other data available in VANESA:

- Issuable stock index for red cells
- Transfused as a percentage of issue for red cells
- Frozen blood product issues and wastage
- Benchmarking of wastage and issues against similar hospitals (using 'cluster group' filters e.g. by regional transfusion area or blood product usage group).
- Transparency tables – wastage data (absolute and WAPI) and Net issues data (blood group breakdown + % O Neg issues) of all products and participants with cluster group filters.
- NHSBT non-routine delivery to hospital summary reports
- Blood service wastage and issues data

All data can be exported in graphical or table format.

Blood Stocks Management Scheme (BSMS) Information for Transfusion Practitioners

Wastage as a percentage of issue (RedCells)

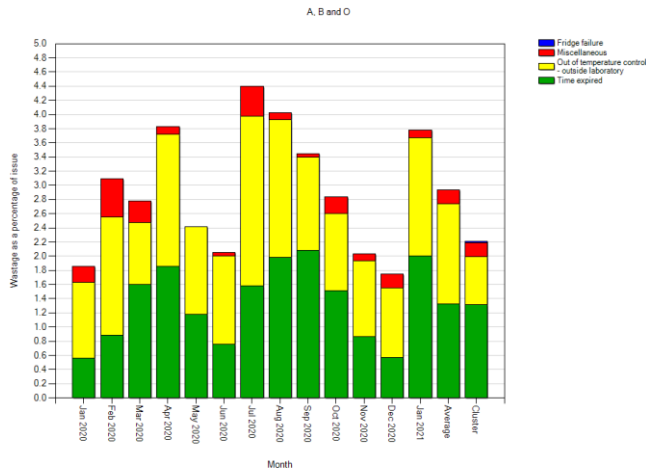


Figure 1 Wastage as a percentage of issue to the hospital (bar) (red cells)

Wastage as a percentage of issue (RedCells)

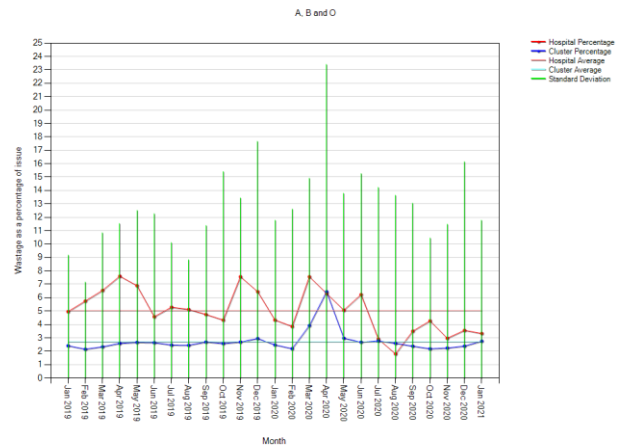


Figure 2 Wastage as a percentage of issue to the hospital (line) (red cells)

Total Issues (Platelets)

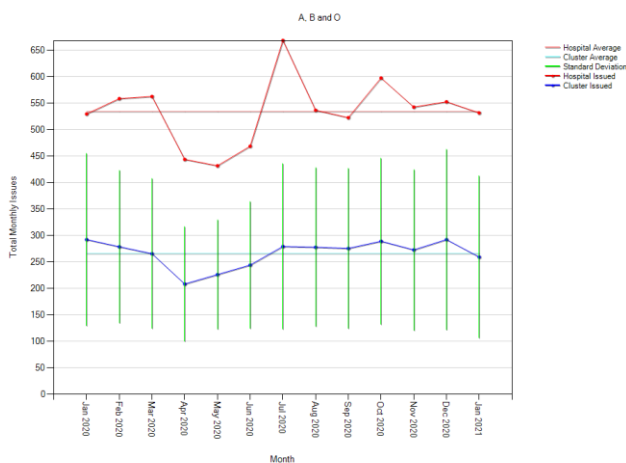
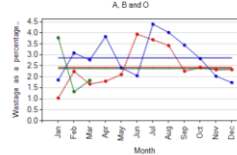
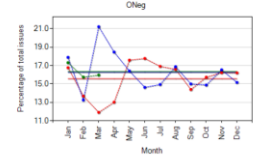


Figure 3 Total issues (platelets), this can be further broken down into blood groups

Wastage as a percentage of issue (RedCells)



Issues as a percentage of total issues (RedCells)



Wastage as a percentage of issue (Platelets)

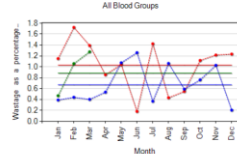


Figure 4 Yearly graph reports – example of comparative issue annual data available

What else does the BSMS do?

- Produce routine data analysis reports for all participating hospitals to allow understanding of their position and the comparison amongst peer hospitals.
- Host education events – enable participants to share good practice and obtain the tools to improve blood inventory management (check the BSMS website for information).
- Distribute an Annual Inventory Practice Survey to all participants to gather information and report back to participants on various aspects of hospital blood inventory management.
- Produce an Annual Report containing summary figures and analysis on blood product inventory practices.
- Provide tailored analysis for any participating hospital, offering suggestions on how it might be possible to further improve stock management and evidence this using BSMS data.

For further Information on BSMS and for VANESA access visit www.bloodstocks.co.uk

For a VANESA view only user account or any other queries please email bsms@nhsbt.nhs.uk