

STANDARD OPERATING PROCEDURE SOPXXXX**New Findings Made at Transplant Centres Requiring Histopathology Assessment**

<p><i>This SOP replaces</i></p>	<p>Copy Number</p>
<p style="text-align: center;"><i>NEW</i></p>	<p>Effective DRAFT</p>

Purpose

On arrival at an accepting Transplant Centre, during the physical assessment of an organ, there are occasions when suspicious lesions are identified that require histopathology assessment. This is not a service provided or commissioned by NHSBT and the destination of samples can vary significantly.

This process provides guidance for all those involved in the histopathology assessment of samples that may affect the safety of an organ, including Transplant Centres, histopathologists, Biomedical Scientists, Hub Operations staff, and SNODs.

Responsibilities**Transplant Centres –**

To notify Hub Operations immediately if any new suspicious lesions are identified during organ assessment at the Recipient Centre, and timescales of any results to be available. To ensure consideration of other potential recipients when making decision around biopsy plans. To communicate both provisional and final results in a timely way.

Histopathology Laboratory –

Notify SNOD/Hub Operations of any findings or results following histopathology assessment.

Hub Operations (HO) –

To communicate with the appropriate RCPoC/National Referral Centre (NRC)/SNBTS/Donor Records Department (DRD) once informed of the finding and any results and document their actions on NTxD.

Specialist Nurse – Organ Donation (SNOD)

The SNOD is responsible for ensuring the provisional and final histopathology results are ascertained.

Donor Records Department (DRD) –

To forward all histopathology findings to the SNOD as soon as they are received from Hub Operations.

NB the DRD is not a 24/7 service.

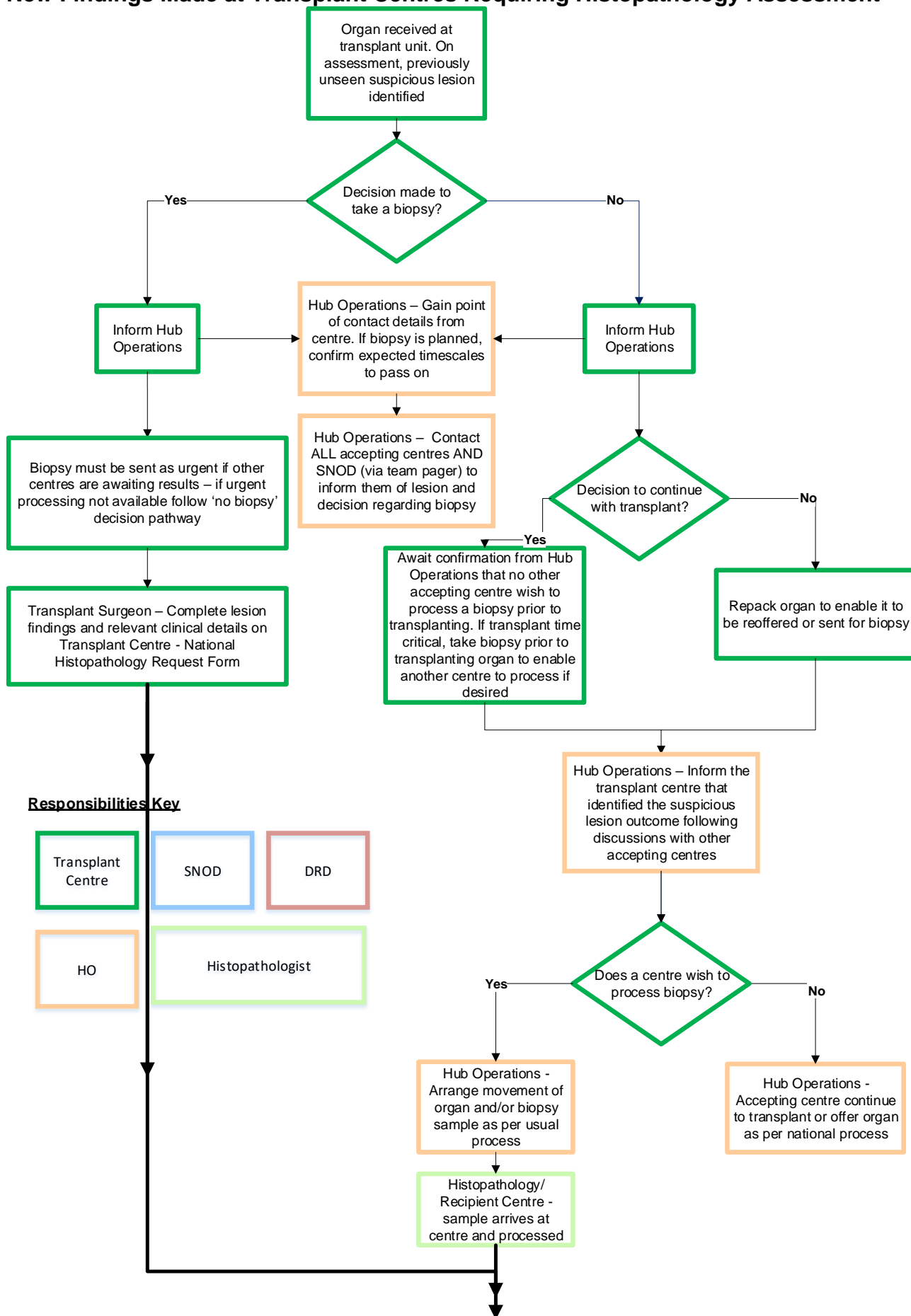
Items Required

FRMXXXX – National Histopathology Request Form – For use by Transplant Centre

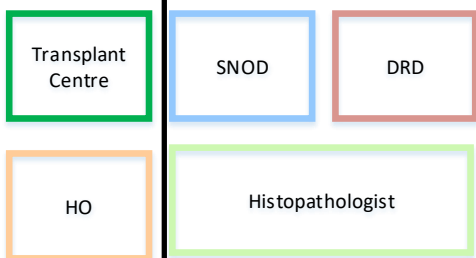
[MPD881](#) – Findings Requiring Additional Action

STANDARD OPERATING PROCEDURE SOPXXXX

New Findings Made at Transplant Centres Requiring Histopathology Assessment



Responsibilities Key



STANDARD OPERATING PROCEDURE SOPXXXX

New Findings Made at Transplant Centres Requiring Histopathology Assessment

