

Cardiothoracic Activity

Key messages

- At 29 February 2020, there were 343 patients on the active heart transplant list, 347 on the lung list and 5 on the heart-lung list
- Of the 946 organ donors after brain death during 2019-2020, 165 (17%) donated their heart and 146 (15%) donated at least one lung
- The number of heart transplants fell by 5% to 174; 69% of these were urgent heart transplants, 17% were super-urgent, and 14% were non-urgent
- The number of lung and heart-lung transplants fell by 4% this year to 160
- There were 23 DCD heart transplants and the first DCD heart-lung transplant in 2019-2020

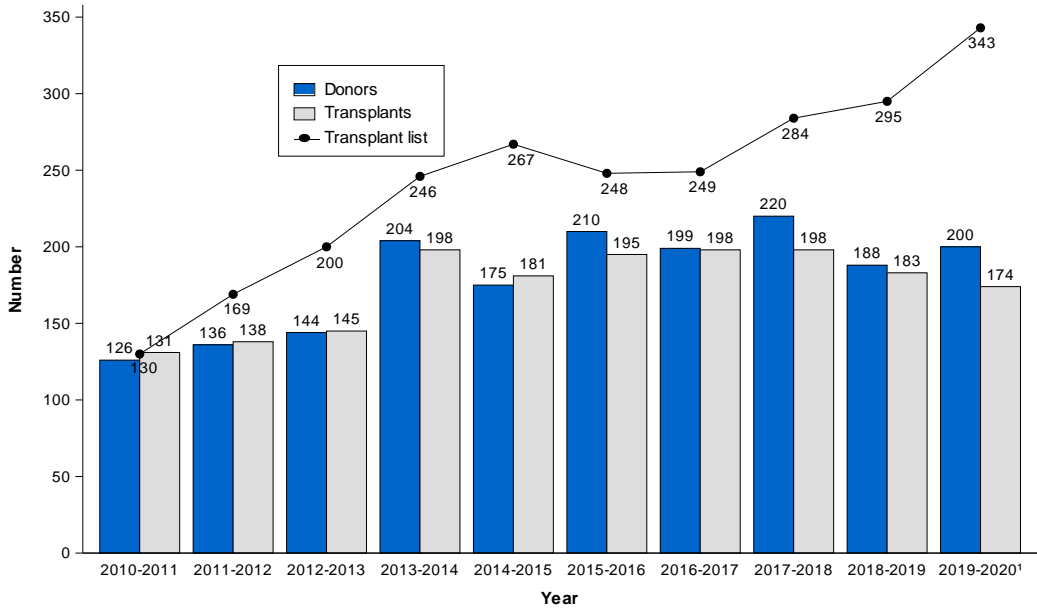
7.1 Overview

Note that the COVID-19 pandemic will have affected the number of offered, retrieved and transplanted organs in 2019-2020. To better reflect the number of patients waiting for a transplant at the end of this year, data as at 29 February 2020 have been used.

Last year the number of heart transplants fell by 5% to 174 compared with 2018-2019, and the number of lung or heart-lung transplants fell by 4% to 160. There were increases in both the heart and the lung transplant lists since March 2019. The number of patients active on the heart transplant list at year end has increased by 164% since 2011, while the number of patients active on the lung or heart-lung transplant list has increased by 56% since 2011.

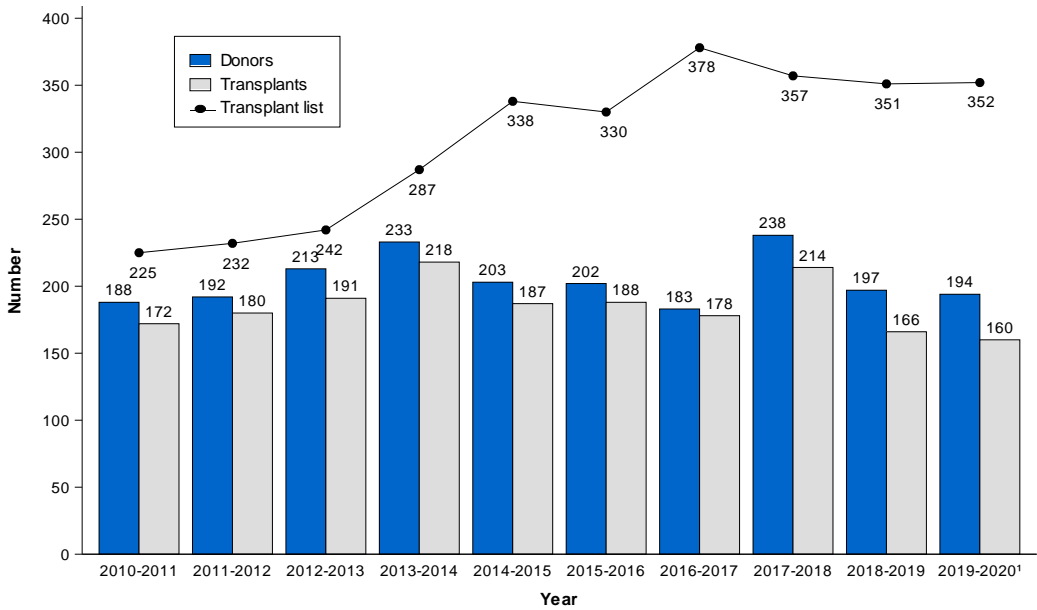
A summary of the deceased donor cardiothoracic activity from 1 April 2010 to 31 March 2020 is shown in **Figure 7.1** for heart activity and **Figure 7.2** for lung activity. Donors who donate both heart and lung(s) are included in both figures, but heart-lung block transplants and patients active on the transplant list for a heart-lung block are only included in **Figure 7.2**.

Figure 7.1 Deceased donor heart programme in the UK, 1 April 2010 - 31 March 2020, Number of donors, transplants and patients on the active transplant list at 31 March



¹ Waiting list as at 29 February 2020

Figure 7.2 Deceased donor lung and heart-lung programme in the UK, 1 April 2010 - 31 March 2020, Number of donors, transplants and patients on the active transplant list at 31 March



¹ Waiting list as at 29 February 2020

7.2 Transplant list

Table 7.1 shows the number of patients on the active transplant lists at 29 February 2020 by centre. There were two patients waiting on the super-urgent heart transplant list. There were no patients waiting on the super-urgent lung transplant list, and six patients waiting on the urgent lung transplant list. The lung transplant list accounts for 50% of the patients waiting for a cardiothoracic organ transplant. Overall, Newcastle and Harefield had the largest cardiothoracic lists on 29 February 2020.

Table 7.1 Patients on the cardiothoracic transplant lists at 29 February 2020 (2019)¹ in the UK, by centre																
Centre	Heart						Active transplant lists						TOTAL			
	Non-urgent		Urgent		Super-urgent		Heart-lung		Lung		Super-urgent					
Adult																
Birmingham	39	(30)	9	(4)	0	(1)	1	(2)	48	(44)	1	(0)	0	(0)	98	(81)
Glasgow	18	(17)	3	(3)	0	(0)	0	(0)	0	(0)	0	(0)	0	(0)	21	(20)
Great Ormond Street	1	(0)	0	(0)	0	(0)	0	(0)	1	(0)	0	(0)	0	(0)	2	(0)
Harefield	56	(59)	7	(4)	0	(0)	0	(2)	96	(110)	1	(0)	0	(0)	160	(175)
Manchester	33	(28)	1	(5)	0	(0)	1	(3)	53	(55)	0	(0)	0	(0)	88	(91)
Newcastle	82	(70)	11	(10)	0	(0)	1	(1)	101	(91)	1	(0)	0	(0)	196	(172)
Papworth	43	(27)	2	(1)	2	(1)	2	(4)	41	(31)	2	(0)	0	(0)	92	(64)
TOTAL	272	(231)	33	(27)	2	(2)	5	(12)	340	(331)	5	(0)	0	(0)	657	(603)
Paediatric																
Great Ormond Street	11	(18)	14	(6)	0	(0)	0	(0)	0	(3)	1	(3)	0	(0)	26	(30)
Harefield	0	(1)	0	(0)	0	(0)	0	(0)	0	(0)	0	(0)	0	(0)	0	(1)
Newcastle	8	(5)	3	(5)	0	(0)	0	(0)	1	(2)	0	(0)	0	(0)	12	(12)
TOTAL	19	(24)	17	(11)	0	(0)	0	(0)	1	(5)	1	(3)	0	(0)	38	(43)

¹ Waiting list figures are as at 29 February 2020 and 31 March 2019

During 2019-2020, there were 322 registrations onto the heart transplant list, 5 registrations onto the heart-lung transplant list and 272 onto the lung transplant list. Registration outcomes as at 31 March 2020 for patients on the list at 1 April 2019 and those joining the list during the year are shown in **Table 7.2**.

Table 7.2 Cardiothoracic organ transplant lists and new registrations in the UK, 1 April 2019 - 31 March 2020						
Outcome of patient at 31 March 2020	Active and suspended patients at 1 April 2019		New registrations in 2019-2020¹		TOTAL	
	N	%	N	%	N	%
Heart transplant list						
Remained active/suspended	227	69	148	46	375	58
Transplanted	53	16	120	37	173	27
Removed	31	9	44	14	75	12
Died	16	5	10	3	26	4
TOTAL	327		322		649	
Heart-lung transplant list						
Remained active/suspended	4	24	2	40	6	27
Transplanted ²	6	35	1	20	7	32
Removed	5	29	2	40	7	32
Died	2	12	0	0	2	9
TOTAL	17		5		22	
Lung transplant list						
Remained active/suspended	179	52	185	68	364	59
Transplanted	99	29	54	20	153	25
Removed	36	11	11	4	47	8
Died	28	8	22	8	50	8
TOTAL	342		272		614	
¹ Includes re-registrations for second or subsequent patients						
² Patients may have received heart, lung, or heart-lung						

Table 7.3 shows the transplant list rates per million population by country/NHS region of patient's residence. The overall UK heart transplant list rate at 29 February 2020 was 5.2 pmp and ranged from 3.7 to 8.1 across NHS regions. The overall UK lung transplant list rate was 5.3 pmp and ranged from 2.9 to 6.2 across NHS regions.

Table 7.3 Active cardiothoracic transplant list at 31 March, by country/NHS region of patient residence

Country/ NHS region of residence	Heart transplant list (pmp)				Lung transplant list (pmp)			
	2020 ¹		2019		2020 ¹		2019	
North East and Yorkshire	69	(8.1)	62	(7.2)	53	(6.2)	59	(6.9)
North West	31	(4.4)	22	(3.1)	43	(6.1)	39	(5.6)
Midlands	51	(4.8)	39	(3.7)	61	(5.8)	53	(5.0)
East of England	24	(3.7)	21	(3.2)	19	(2.9)	22	(3.4)
London	43	(4.8)	31	(3.5)	45	(5.1)	34	(3.8)
South East	40	(4.5)	38	(4.3)	36	(4.1)	47	(5.3)
South West	23	(4.1)	21	(3.7)	25	(4.5)	29	(5.2)
England	281	(5.0)	234	(4.2)	282	(5.0)	283	(5.1)
Isle of Man	1	(12.5)	1	(12.5)	0	(0.0)	1	(12.5)
Channel Islands	0	(0.0)	0	(0.0)	2	(12.5)	1	(6.3)
Wales	12	(3.8)	10	(3.2)	14	(4.5)	22	(7.0)
Scotland	28	(5.1)	27	(5.0)	32	(5.9)	28	(5.1)
Northern Ireland	14	(7.4)	15	(8.0)	21	(11.2)	14	(7.4)
TOTAL ^{2,3}	343	(5.2)	295	(4.4)	352	(5.3)	351	(5.3)

¹ As at 29 February 2020

² Includes heart patients in 2020 (2019) resident in: UK unknown 3 (3); Republic of Ireland 2 (2); Overseas 2 (3)

³ Includes lung patients in 2020 (2019) resident in: UK unknown 1 (1); Republic of Ireland 0 (1)

The transplant list outcomes for adult patients listed for a cardiothoracic organ transplant between 1 April 2016 and 31 March 2017 are summarised in **Figure 7.3**, **Figure 7.4** and **Figure 7.5**. These show the proportion of patients transplanted, still waiting, removed and those who died within six months, one year, two years and three years after joining the non-urgent or urgent heart list or the lung list, respectively. Within six months of listing, 10% of non-urgent heart patients were transplanted while 3% had died, compared with 67% transplanted and 7% died for urgent heart patients. Of those listed for a non-urgent lung transplant, 26% were transplanted within six months, rising to 47% after three years, however at three years, 20% had died. The patients removed from these lists may have subsequently died.

Figure 7.3 Post-registration outcome for 172 first non-urgent heart only registrations made in the UK, 1 April 2016 - 31 March 2017

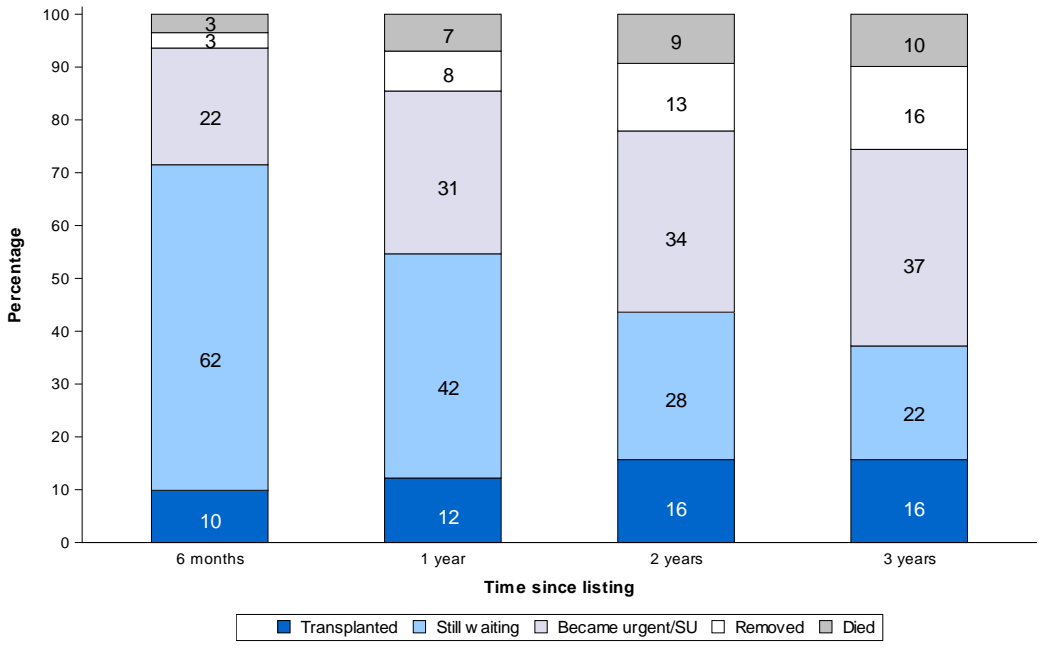
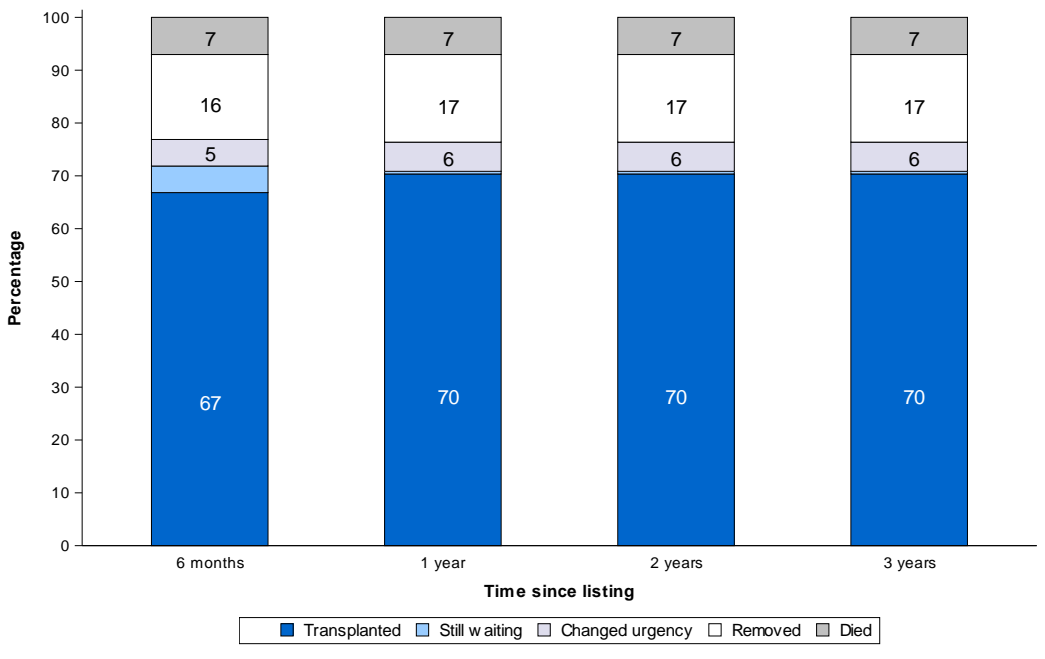


Figure 7.4 Post-registration outcome for 199 first urgent heart only registrations made in the UK, 1 April 2016 - 31 March 2017



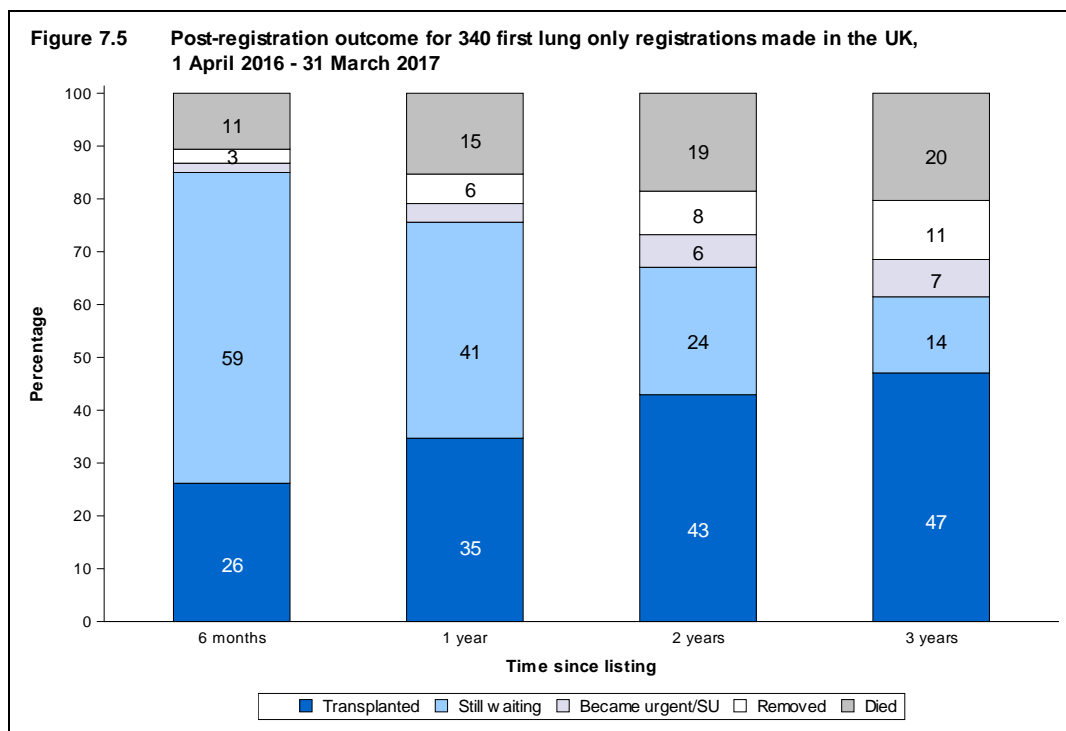


Table 7.4 and **Table 7.5** show the median waiting time to cardiothoracic organ transplant by blood group and ethnicity of patient, respectively, for patients registered between 1 April 2012 and 31 March 2017. The overall median waiting time to heart transplantation, for adults, was just over 4 years for patients who had never been on the urgent waiting list ('never urgent'). For patients who had been on the urgent list ('ever urgent'), the overall median time on the urgent list before transplant was 32 days. The overall median waiting time to lung transplantation, for adults, was 336 days, but for blood group O patients alone was 528 days. For paediatric heart patients, the median waiting time was 463 days for 'never urgent' registrations and 77 days for 'ever urgent' registrations (this is not broken down by blood group or ethnicity due to low numbers). Median waiting time is not calculated for paediatric lung patients due to the small number of registrations. Note that these waiting times are not adjusted for other relevant factors which may be influential and which may differ across blood or ethnic groups.

Table 7.4 Median waiting time to cardiothoracic transplant in the UK, for patients registered 1 April 2012 - 31 March 2017, by blood group

Blood group	Number of patients registered	Waiting time (days)	
		Median	95% Confidence interval
Adult never urgent heart			
O ¹	186	-	-
A	197	756	216 - 1296
B	45	497	186 - 808
AB	15	92	0 - 195
TOTAL	443	1487	909 - 2065
Adult ever urgent heart² (urgent waiting time only)			
O	311	52	45 - 59
A	316	17	14 - 20
B	97	39	29 - 49
AB	34	27	20 - 34
TOTAL	758	32	28 - 36
Paediatric never urgent heart	32	463	0 - 951
Paediatric ever urgent heart (urgent waiting time only)	214	77	54 - 100
Adult lung			
O	653	528	448 - 608
A	597	200	159 - 241
B	140	269	128 - 410
AB	44	171	125 - 217
TOTAL	1434	336	299 - 373

¹ Median and/or 95% confidence interval cannot be estimated

² Includes registrations and waiting time on super-urgent list where applicable

Table 7.5 Median waiting time to cardiothoracic transplant in the UK, for patients registered 1 April 2012 - 31 March 2017, by ethnicity

Ethnicity	Number of patients registered	Waiting time (days)	
		Median	95% Confidence interval
Adult never urgent heart			
White	396	1798	1080 - 2516
Asian	24	506	0 - 1222
Black	17	742	86 - 1398
Other ¹	5	-	-
TOTAL²	443	1487	909 - 2065
Adult ever urgent heart³ (urgent waiting time only)			
White	636	31	27 - 35
Asian	74	33	22 - 44
Black	27	68	1 - 135
Other	15	34	24 - 44
TOTAL²	758	32	28 - 36
Paediatric never urgent heart	32	463	0 - 951
Paediatric ever urgent heart (urgent waiting time only)	214	77	54 - 100
Adult lung			
White	1354	322	285 - 359
Asian	55	592	289 - 895
Black	16	735	526 - 944
Other ¹	3	-	-
TOTAL²	1434	336	299 - 373

¹ Median waiting time not calculated for fewer than 10 patients

² Totals do not add up where we do not have ethnicity reported for all patients

³ Includes registrations and waiting time on super-urgent list where applicable

7.3 Donor and organ supply

Table 7.6 shows the number of deceased organ donors identified in each heart allocation zone, and the number of donors that had their heart retrieved and transplanted, by donor type. It also shows the number in each zone who donated their lung(s) as well as their heart. Of the 946 DBD donors, 166 (18%) donated their heart, resulting in 153 transplants. Of the 634 DCD donors, 34 (5%) donated their heart, resulting in 24 transplants.

Table 7.7 shows the number of deceased organ donors identified in each lung allocation zone, and the number of donors that had their lungs retrieved and transplanted, by donor type. It also shows the number in each zone who donated their heart as well as their lung(s). Of the 946 DBD donors, 148 (16%) donated at least one lung, with 135 proceeding to transplantation. Of the 634 DCD donors, 46 (7%) donated at least one lung, with 33 proceeding to transplantation.

Note that from May 2017, hearts and lungs have had separate allocation zones and so the number of donors in zones does not match between heart and lung allocation zones. Prior to this, there were joint cardiothoracic allocation zones.

Table 7.6 Heart organ donation and retrieval rates in the UK, 1 April 2019 - 31 March 2020, by heart allocation zone and donor type								
Heart Allocation Zone	Number of donors	DBD			Number of donors	DCD		
		Number of heart donors (utilised)		Number donated heart and lungs		Number of heart donors (utilised)		Number donated heart and lungs
Birmingham	150	36	(34)	11	94	1	(1)	0
Glasgow	83	13	(13)	7	37	1	(0)	0
Harefield	209	34	(32)	14	143	8	(4)	3
Manchester	120	23	(23)	10	88	2	(2)	0
Newcastle	210	33	(28)	8	131	11	(9)	3
Papworth	174	27	(23)	7	141	11	(8)	2
TOTAL	946	166	(153)	57	634	34	(24)	8

Table 7.7 Lung organ donation and retrieval rates in the UK, 1 April 2019 - 31 March 2020, by lung allocation zone and donor type								
Lung Allocation Zone	Number of donors	DBD			Number of donors	DCD		
		Number of lung donors (utilised)		Number donated heart and lungs		Number of lung donors (utilised)		Number donated heart and lungs
Birmingham	149	25	(25)	11	80	8	(6)	0
Harefield	287	48	(48)	17	186	19	(13)	4
Manchester	118	17	(17)	8	100	4	(3)	0
Newcastle	220	33	(21)	12	114	9	(6)	2
Papworth	172	25	(24)	9	154	6	(5)	2
TOTAL	946	148	(135)	57	634	46	(33)	8

The rates per million population for cardiothoracic organ donors are shown in **Table 7.8** by country/NHS region of residence. No adjustments have been made for potential demographic differences in populations. The overall heart donor rate was 3.0 pmp in 2019-2020 and varied across NHS regions from 2.2 pmp to 3.5 pmp. For lungs, the overall donor rate was 2.9 pmp in 2019-2020 and varied across NHS regions from 1.9 pmp to 3.6 pmp.

Table 7.8 Cardiothoracic donation and retrieval rates for deceased donors in the UK, 1 April 2019 - 31 March 2020, by country/NHS region

Country/ NHS region	Heart (pmp)			Lungs (pmp)		
	DBD	DCD	Total	DBD	DCD	Total
North East and Yorkshire	21 (2.5)	7 (0.8)	28 (3.3)	19 (2.2)	7 (0.8)	26 (3.0)
North West	15 (2.1)	3 (0.4)	18 (2.6)	11 (1.6)	2 (0.3)	13 (1.9)
Midlands	28 (2.7)	4 (0.4)	32 (3.0)	23 (2.2)	6 (0.6)	29 (2.8)
East of England	14 (2.2)	9 (1.4)	23 (3.5)	11 (1.7)	3 (0.5)	14 (2.2)
London	14 (1.6)	6 (0.7)	20 (2.2)	20 (2.2)	6 (0.7)	26 (2.9)
South East	24 (2.7)	3 (0.3)	27 (3.1)	22 (2.5)	10 (1.1)	32 (3.6)
South West	14 (2.5)	1 (0.2)	15 (2.7)	12 (2.1)	6 (1.1)	18 (3.2)
England	130 (2.3)	33 (0.6)	163 (2.9)	118 (2.1)	40 (0.7)	158 (2.8)
Isle of Man	0 (0.0)	0 (0.0)	0 (0.0)	0 (0.0)	1 (12.5)	1 (12.5)
Channel Islands	1 (6.3)	0 (0.0)	1 (6.3)	1 (6.3)	0 (0.0)	1 (6.3)
Wales	16 (5.1)	0 (0.0)	16 (5.1)	10 (3.2)	2 (0.6)	12 (3.8)
Scotland	10 (1.8)	1 (0.2)	11 (2.0)	12 (2.2)	2 (0.4)	14 (2.6)
Northern Ireland	6 (3.2)	0 (0.0)	6 (3.2)	2 (1.1)	1 (0.5)	3 (1.6)
TOTAL^{1,2}	165 (2.5)	34 (0.5)	199 (3.0)	146 (2.2)	46 (0.7)	192 (2.9)

DCD heart donation is not operational in all areas

¹ Heart numbers include 2 donors with unknown UK postcode and excludes 1 donor with overseas postcode

² Lung numbers include 3 donors with unknown UK postcode and excludes 2 donors with overseas postcode

7.4 Transplants

The number of cardiothoracic organ transplants by recipient country/NHS region of residence is shown in **Table 7.9**. No adjustments have been made for potential demographic differences in populations. The heart transplant rate ranged from 1.6 to 3.7 pmp across NHS regions and overall was 2.6 pmp. The lung transplant rate ranged from 1.6 to 2.9 pmp across NHS regions and overall was 2.4 pmp. Lung transplant rates include the small number of heart-lung transplants.

Table 7.9 Cardiothoracic transplant rates per million population (pmp) in the UK, 1 April 2019 - 31 March 2020, by country/NHS region										
Country/ NHS region	Heart (pmp)			Lungs (pmp)						
	DBD	DCD	Total	DBD	DCD	Total				
North East and Yorkshire	28 (3.3)	1 (0.1)	29 (3.4)	14 (1.6)	5 (0.6)	19 (2.2)				
North West	13 (1.9)	1 (0.1)	14 (2.0)	18 (2.6)	2 (0.3)	20 (2.9)				
Midlands	31 (2.9)	3 (0.3)	34 (3.2)	21 (2.0)	4 (0.4)	25 (2.4)				
East of England	16 (2.5)	8 (1.2)	24 (3.7)	15 (2.3)	4 (0.6)	19 (2.9)				
London	10 (1.1)	4 (0.4)	14 (1.6)	12 (1.3)	2 (0.2)	14 (1.6)				
South East	18 (2.0)	3 (0.3)	21 (2.4)	15 (1.7)	4 (0.5)	19 (2.1)				
South West	10 (1.8)	2 (0.4)	12 (2.1)	12 (2.1)	3 (0.5)	15 (2.7)				
England	126 (2.3)	22 (0.4)	148 (2.6)	107 (1.9)	24 (0.4)	131 (2.3)				
Isle of Man	0 (0.0)	0 (0.0)	0 (0.0)	1 (12.5)	0 (0.0)	1 (12.5)				
Channel Islands	0 (0.0)	0 (0.0)	0 (0.0)	0 (0.0)	1 (6.3)	1 (6.3)				
Wales	4 (1.3)	0 (0.0)	4 (1.3)	9 (2.9)	2 (0.6)	11 (3.5)				
Scotland	12 (2.2)	1 (0.2)	13 (2.4)	6 (1.1)	3 (0.6)	9 (1.7)				
Northern Ireland	3 (1.6)	0 (0.0)	3 (1.6)	3 (1.6)	3 (1.6)	6 (3.2)				
TOTAL¹	150 (2.3)	23 (0.3)	173 (2.6)	126 (1.9)	33 (0.5)	159 (2.4)				

DCD heart transplantation is not operational in all areas
¹Excludes 2 recipients who reside in the Republic of Ireland and includes 5 recipients whose postcode was unknown

Table 7.10 and **Table 7.11** show cardiothoracic organ transplant activity for each centre by urgency status and donor type, respectively. In 2019-2020, a total of 334 transplants were carried out; a fall of 4% on 2018-2019. Of these, 174 were heart transplants, of which 149 (86%) were in urgent or super-urgent patients and additionally, 23 (13%) were achieved from donors after circulatory death. There were a total of 155 lung transplants, of which 24 (15%) were in urgent patients and 6 (4%) in super-urgent patients. There was an increase in the number of heart-lung transplants compared with 2018-2019, including the first DCD heart-lung transplant.

Table 7.10 Cardiothoracic transplants from deceased donors, 1 April 2019 – 31 March 2020 (2018-2019), by age group and centre

Transplant centre	Heart						Transplant type						TOTAL			
	Non-urgent		Urgent		Super-urgent		Heart- lung		Lung(s)		Super-urgent					
Adult																
Birmingham	2	(0)	20	(22)	8	(4)	2	(0)	13	(13)	2	(3)	0	(0)	47	(42)
Glasgow	2	(0)	8	(7)	1	(2)	0	(0)	0	(0)	0	(0)	0	(0)	11	(9)
Harefield	1	(6)	17	(24)	5	(6)	0	(0)	32	(38)	3	(6)	5	(6)	63	(86)
Manchester	0	(3)	18	(11)	4	(6)	1	(1)	24	(19)	4	(2)	0	(0)	51	(42)
Newcastle	3	(7)	19	(12)	4	(2)	0	(1)	19	(21)	10	(5)	1	(0)	56	(48)
Papworth	16	(21)	16	(20)	7	(4)	2	(0)	34	(34)	5	(8)	0	(1)	80	(88)
TOTAL	24	(37)	98	(96)	29	(24)	5	(2)	122	(125)	24	(24)	6	(7)	308	(315)
Paediatric¹																
Great Ormond Street	1	(5)	9	(10)	0	(0)	0	(2)	2	(4)	0	(0)	0	(0)	12	(21)
Manchester	0	(0)	0	(0)	0	(1)	0	(0)	0	(0)	0	(0)	0	(0)	0	(1)
Newcastle	0	(2)	13	(8)	0	(0)	0	(0)	1	(0)	0	(2)	0	(0)	14	(12)
TOTAL	1	(7)	22	(18)	0	(1)	0	(2)	3	(4)	0	(2)	0	(0)	26	(34)

¹ Paediatric recipients are aged under 16 years at time of transplant

**Table 7.11 Cardiothoracic transplants from deceased donors,
1 April 2019 - 31 March 2020 (2018-2019), by age group and centre**

Transplant centre	Heart				Transplant type				Lung(s)				TOTAL	
	DBD		DCD		Heart-lung DBD		DCD		DBD		DCD			
Adult														
Birmingham	30	(26)	0	(0)	2	(0)	0	(0)	15	(13)	0	(3)	47	(42)
Glasgow	10	(9)	1	(0)	0	(0)	0	(0)	0	(0)	0	(0)	11	(9)
Harefield	20	(27)	3	(9)	0	(0)	0	(0)	33	(38)	7	(12)	63	(86)
Manchester	20	(19)	2	(1)	1	(1)	0	(0)	23	(18)	5	(3)	51	(42)
Newcastle	26	(20)	0	(1)	0	(1)	0	(0)	21	(17)	9	(9)	56	(48)
Papworth	24	(25)	15	(20)	1	(0)	1	(0)	28	(32)	11	(11)	80	(88)
TOTAL	130	(126)	21	(31)	4	(2)	1	(0)	120	(118)	32	(38)	308	(315)
Paediatric¹														
Great Ormond Street	8	(15)	2	(0)	0	(2)	0	(0)	2	(3)	0	(1)	12	(21)
Manchester	0	(1)	0	(0)	0	(0)	0	(0)	0	(0)	0	(0)	0	(1)
Newcastle	13	(10)	0	(0)	0	(0)	0	(0)	1	(2)	0	(0)	14	(12)
TOTAL	21	(26)	2	(0)	0	(2)	0	(0)	3	(5)	0	(1)	26	(34)

¹ Paediatric recipients are aged under 16 years at time of transplant

At 31 March 2020 there were approximately 4,100 recipients with a functioning cardiothoracic organ transplant being followed-up as reported to the UK Transplant Registry.

The length of time that elapses between cardiothoracic organs being removed from the donor and their transplantation into the recipient is called the total ischaemia time (IT). Generally, the shorter this time, the more likely the organ is to work immediately and the better the long-term outcome. Please note some of these data include the use of donor organ maintenance systems, in which cases the IT reported will be an overestimate of the true ischaemia time.

In 2019-2020, the median IT for a DBD heart transplant was 3.2 hours (Inter-Quartile (IQ) range 2.8 – 4.1) and for a DCD heart transplant was 5.1 hours (IQ range 4.3 – 6.0) and overall was 3.4 hours (IQ range 2.9 – 4.5).

The median IT for a DBD donor lung transplant was 6.2 hours (IQ range 5.5 – 8.3) and for a DCD donor lung transplant was 7.6 hours (IQ range 6.6 – 10.3) and overall was 6.6 hours (IQ range 5.7 – 8.4).

7.5 Demographic characteristics

The age group, sex, ethnicity and blood group of deceased donors, transplant recipients and patients on the transplant list are shown in **Table 7.12**.

Table 7.12 Demographic characteristics of deceased cardiothoracic donors and transplant recipients 1 April 2019 - 31 March 2020, and transplant list patients at 29 February in the UK						
Age group (years)	Donors		Transplant recipients		Active transplant list patients	
	N	(%)	N	(%)	N	(%)
0 - 17	25	(8)	30	(9)	45	(6)
18 - 34	106	(32)	51	(15)	97	(14)
35 - 49	101	(31)	78	(23)	148	(21)
50 - 59	58	(18)	110	(33)	230	(33)
60 - 69	33	(10)	65	(19)	168	(24)
70+	6	(2)	0	(0)	7	(1)
Mean (SD)	40	(16)	45	(17)	48	(16)
Male	180	(55)	204	(61)	430	(62)
Female	149	(45)	129	(39)	265	(38)
Not reported	0		1		0	
White	296	(91)	295	(89)	595	(86)
Asian	12	(4)	30	(9)	55	(8)
Black	8	(2)	4	(1)	33	(5)
Chinese	1	(0)	0	(0)	0	(0)
Other	9	(3)	4	(1)	6	(1)
Not reported	3		1		6	
O	163	(50)	126	(38)	362	(52)
A	138	(42)	160	(48)	251	(36)
B	23	(7)	35	(10)	73	(11)
AB	5	(2)	13	(4)	9	(1)
First graft			331	(99)	684	(98)
Re-graft			3	(1)	11	(2)
TOTAL	329	(100)	334	(100)	695	(100)