

A thick, blue, wavy line that spans the width of the slide, positioned above the main title.

NHSBT Data: Where are we in London?

Matthew Robb

Statistics and Clinical Studies, NHSBT

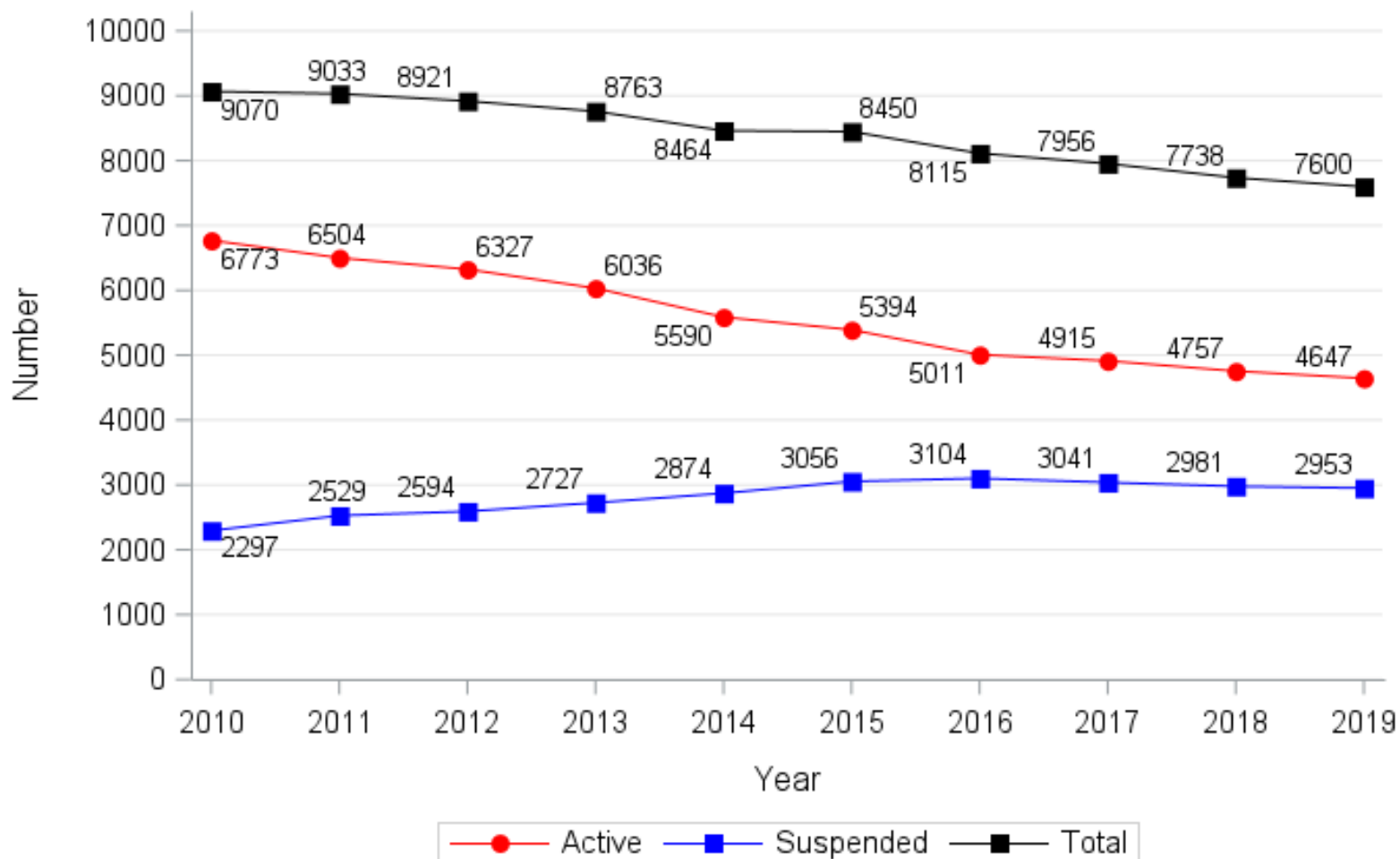
Overview

- Kidney transplant list
- Transplants activity
- Outcomes
- New Offering Scheme

Kidney Transplant List

UK Kidney Transplant List

Adult patients on the kidney only transplant list at 31 March



31% decrease in active list

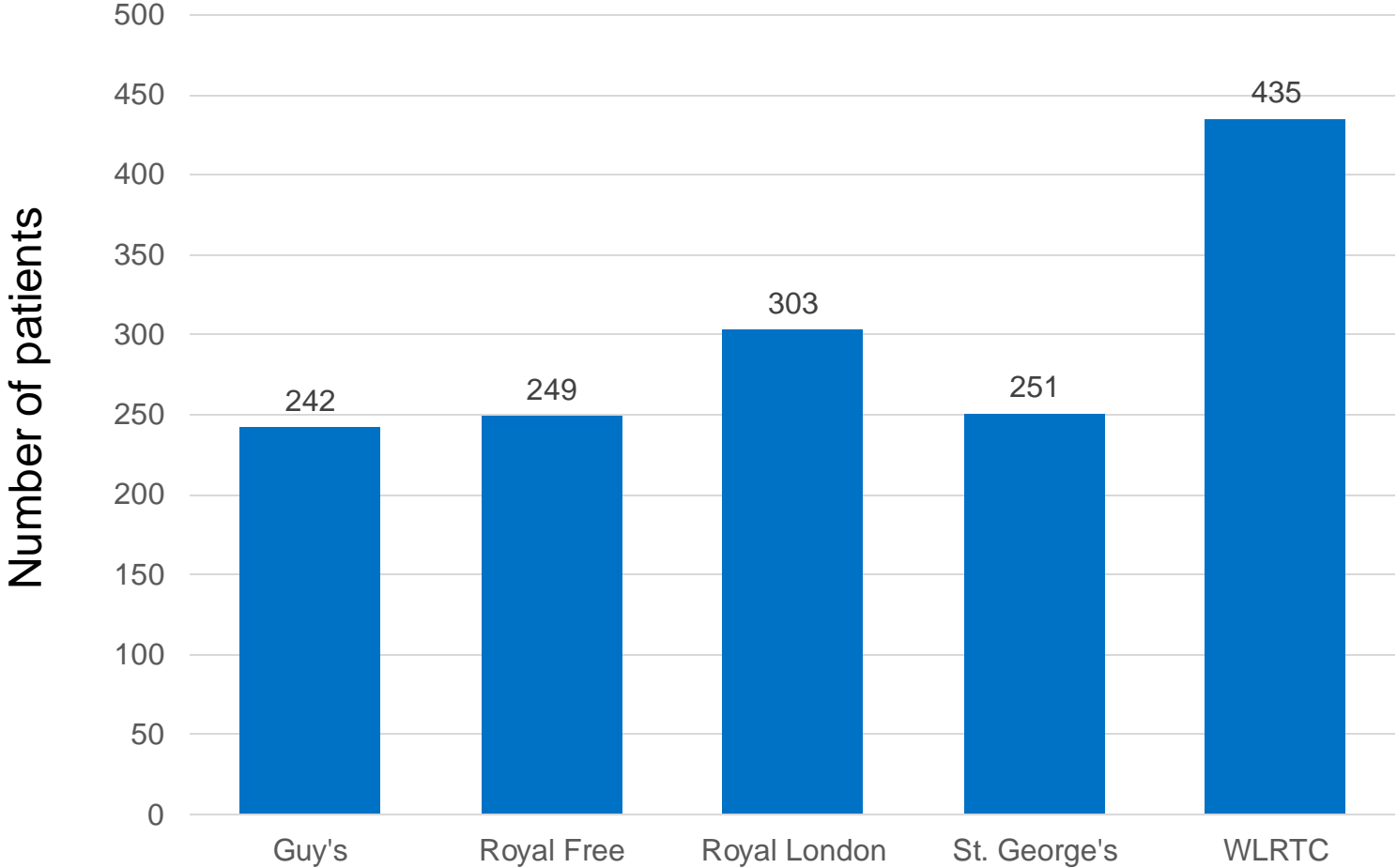
39% suspended

Active Kidney Transplant List in London

- Adult patients



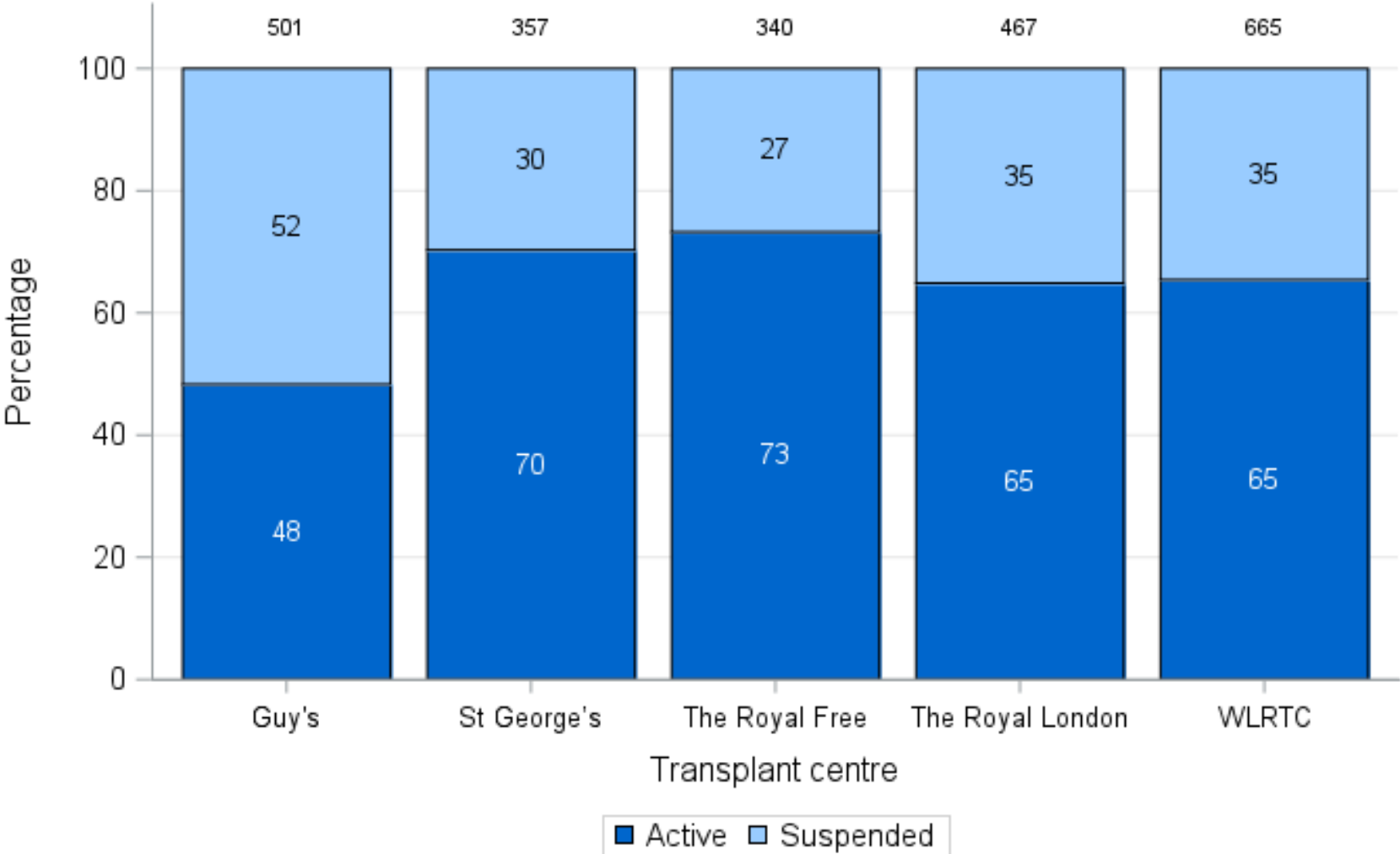
Blood and Transplant



Patients active at 31 March 2019

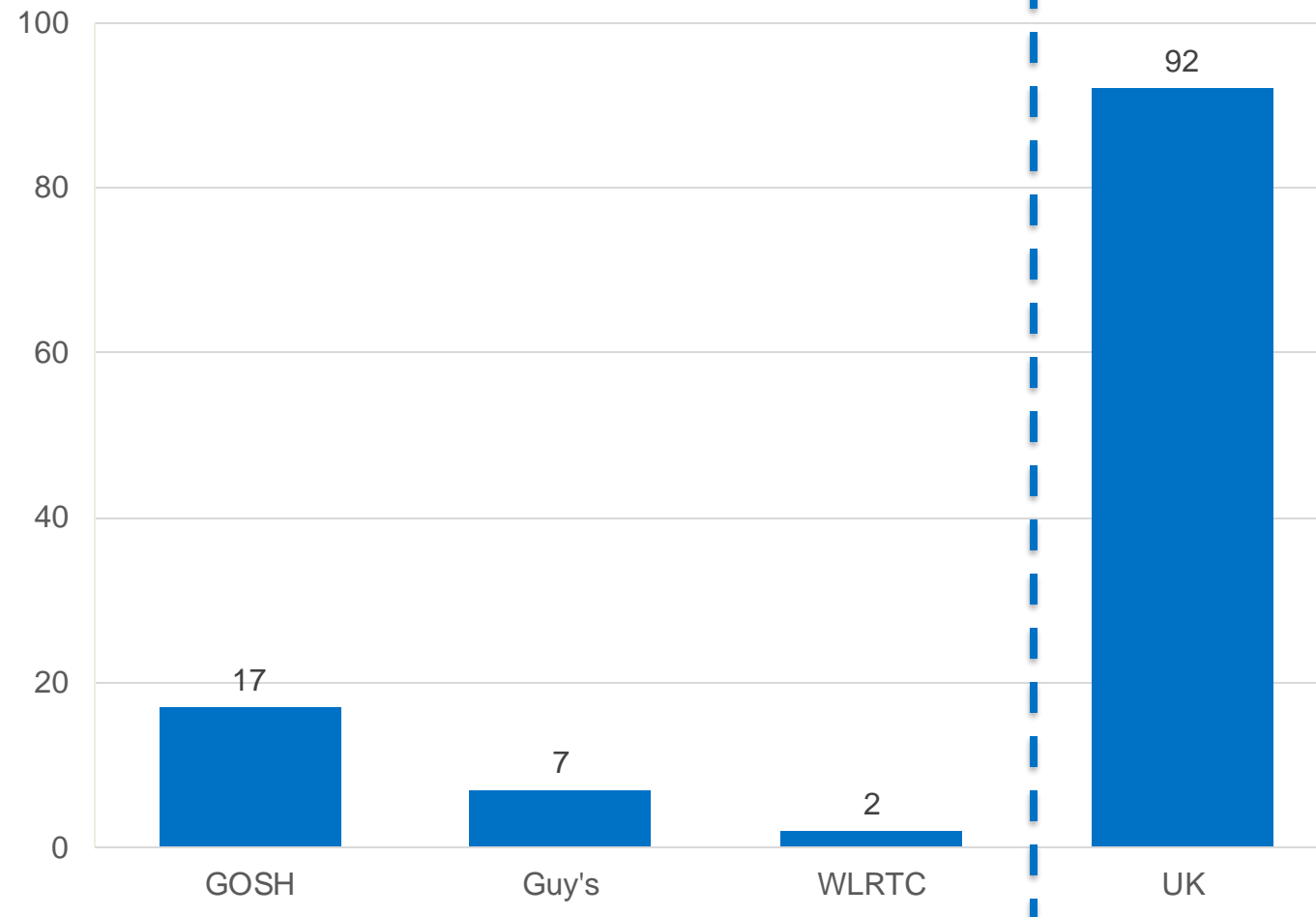
Total Kidney Transplant List in London

- Adult patients



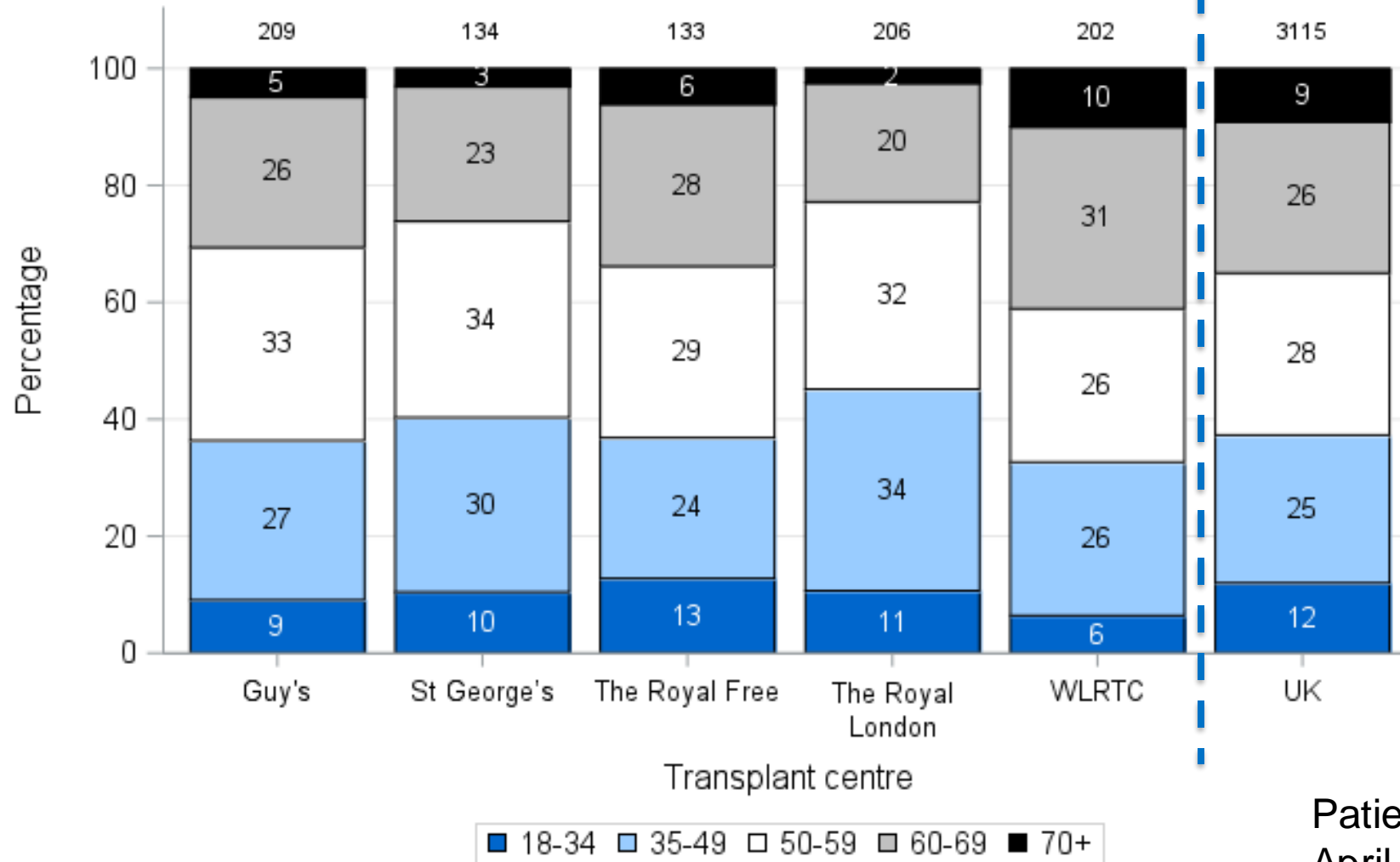
Patients on list at 31 March 2019

Kidney Transplant List in London - Paediatric patients



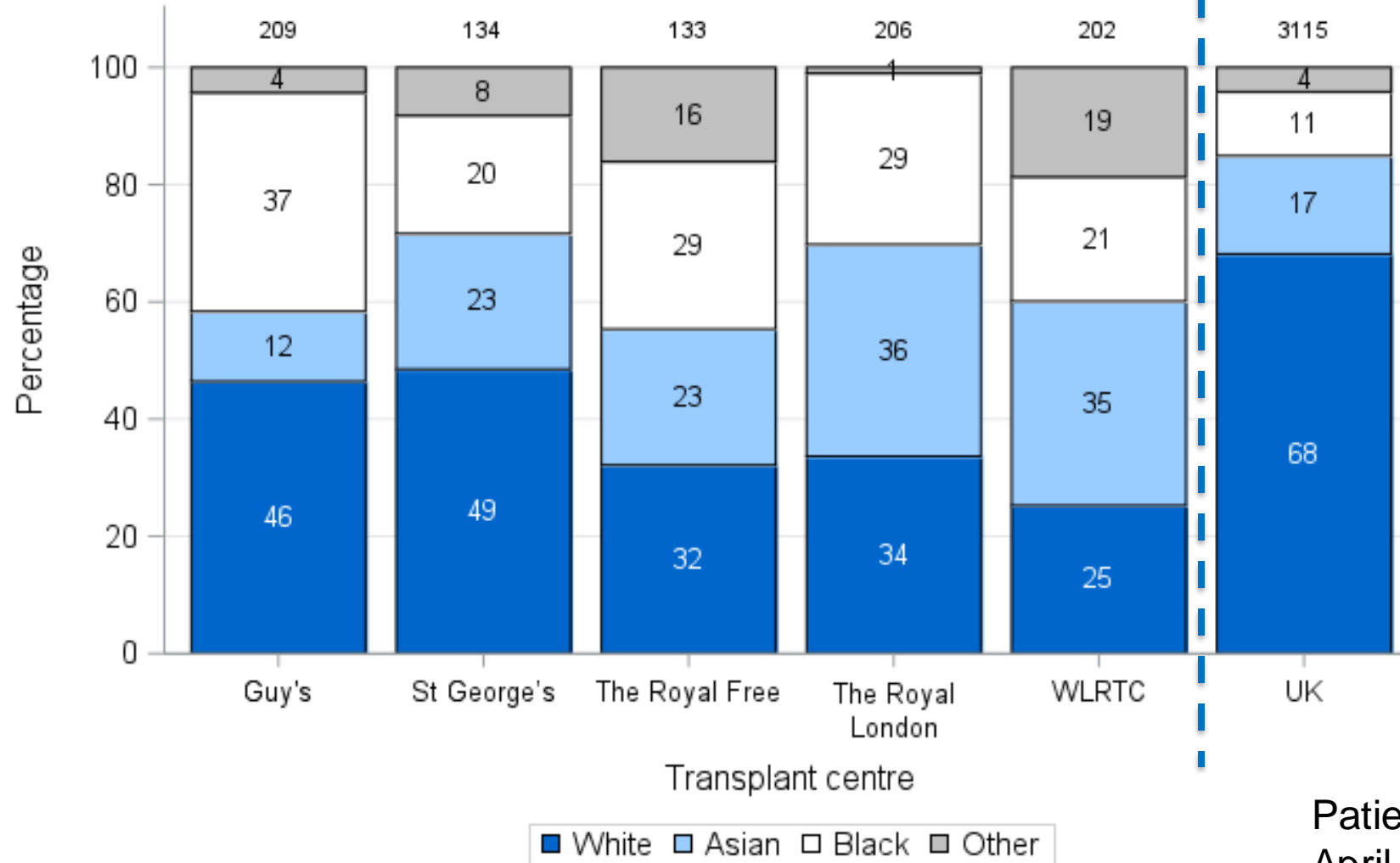
Patients active at 31 March 2019

Demographics - Age



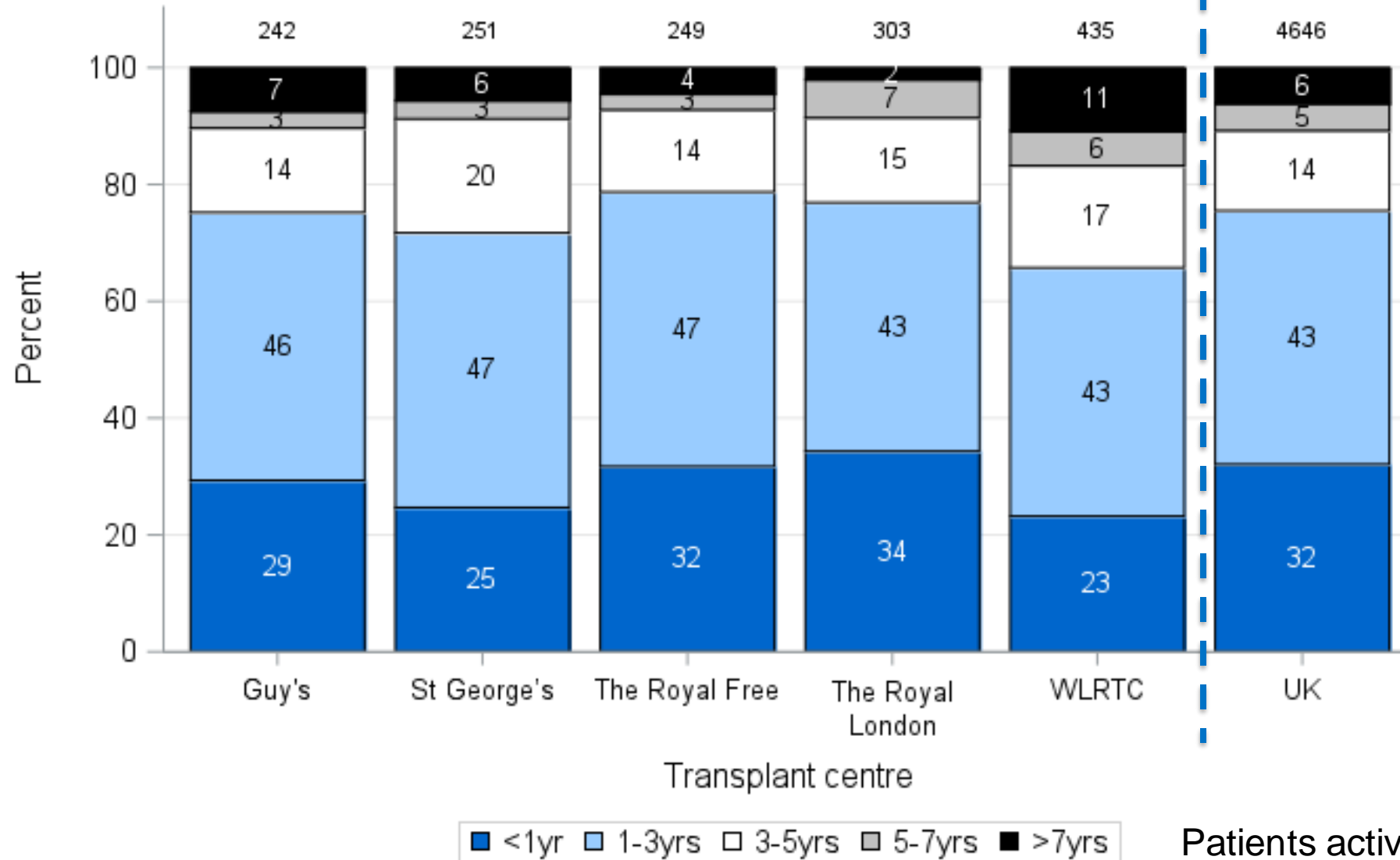
Patients activated
April 2018- March 2019

Demographics - Ethnic Group



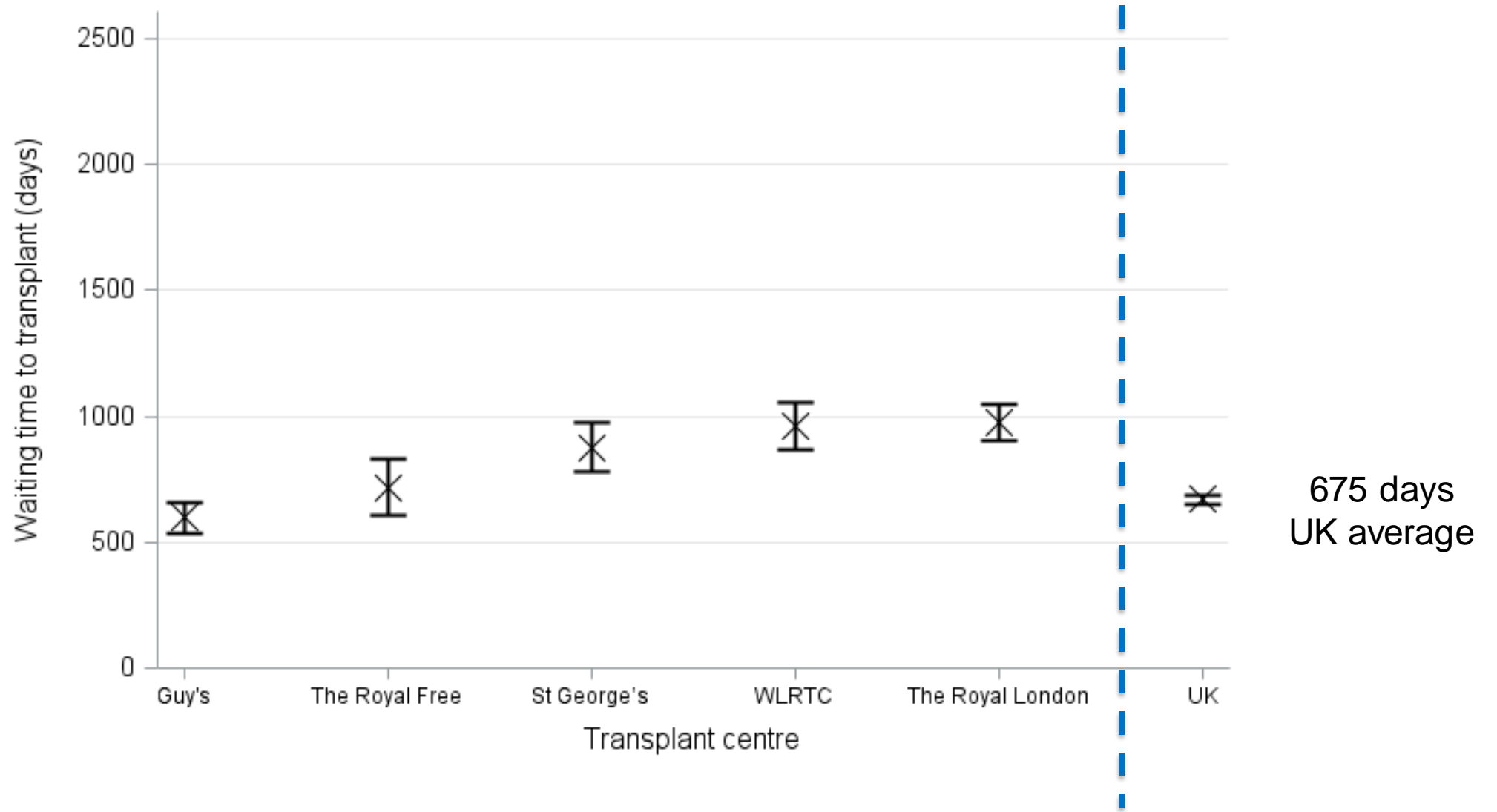
Patients activated
April 2018- March 2019

Waiting Time of Listed Patients

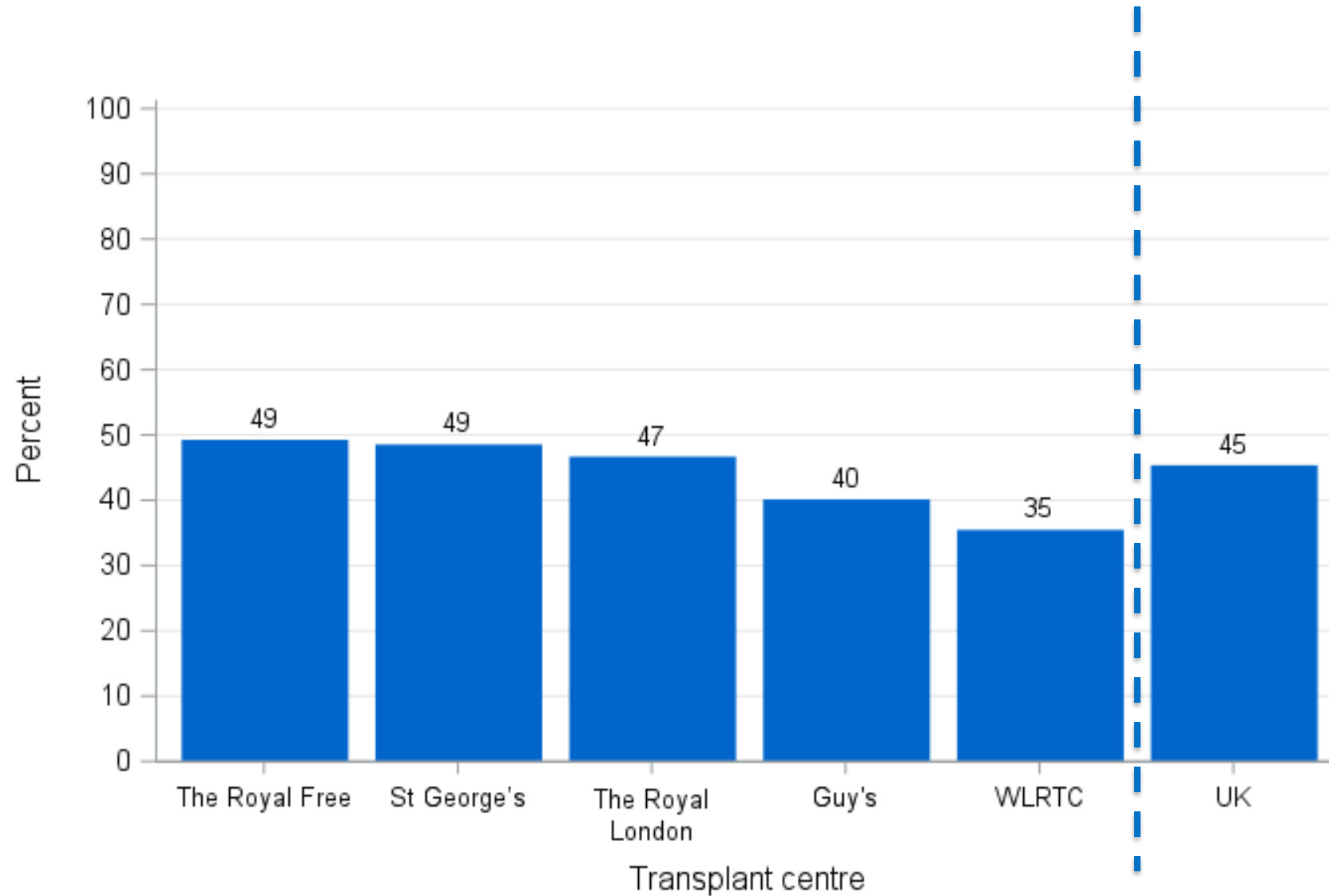


Patients active at 31 March 2019

Median Waiting Time

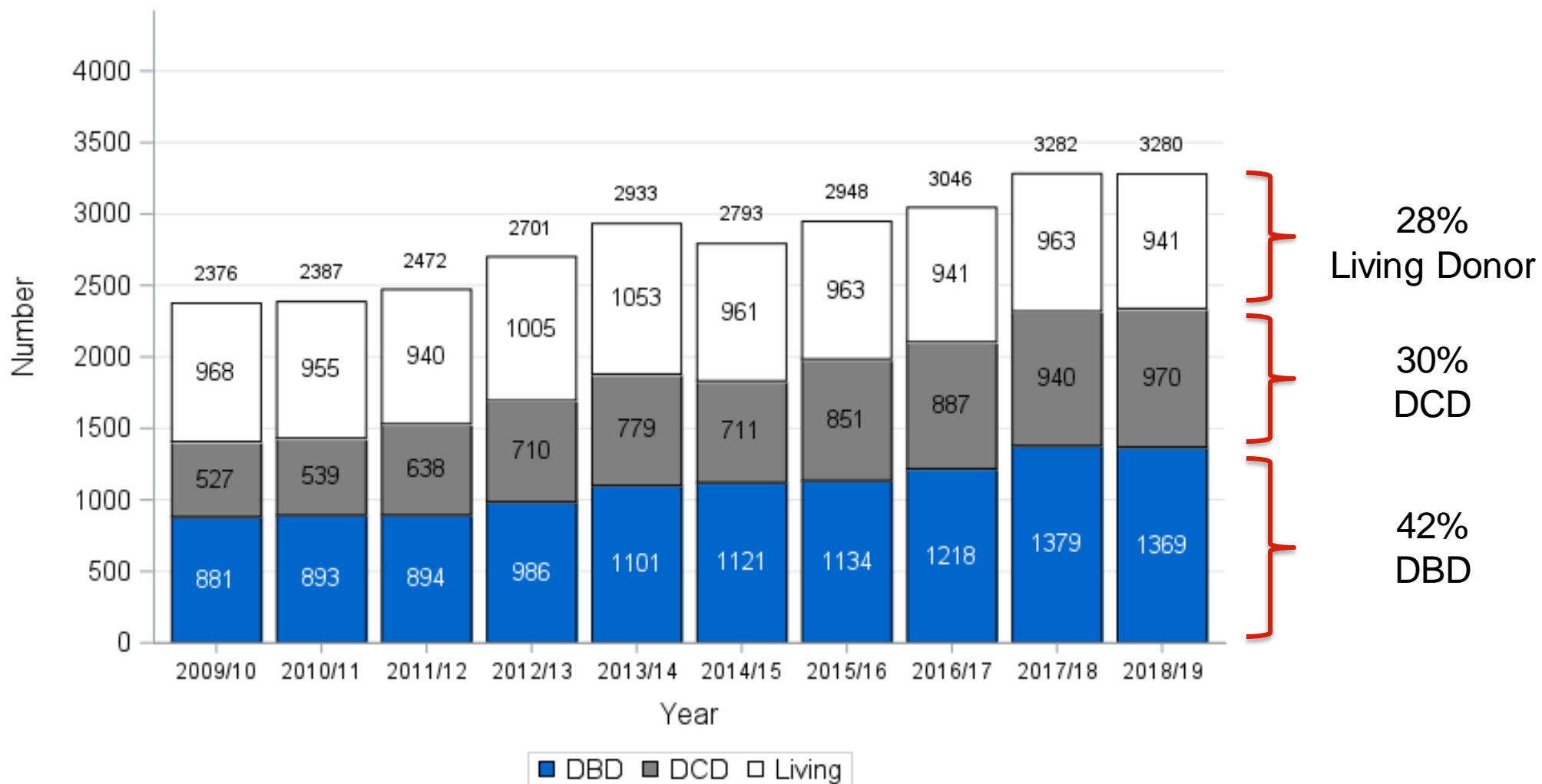


Pre-emptive Listing Rate

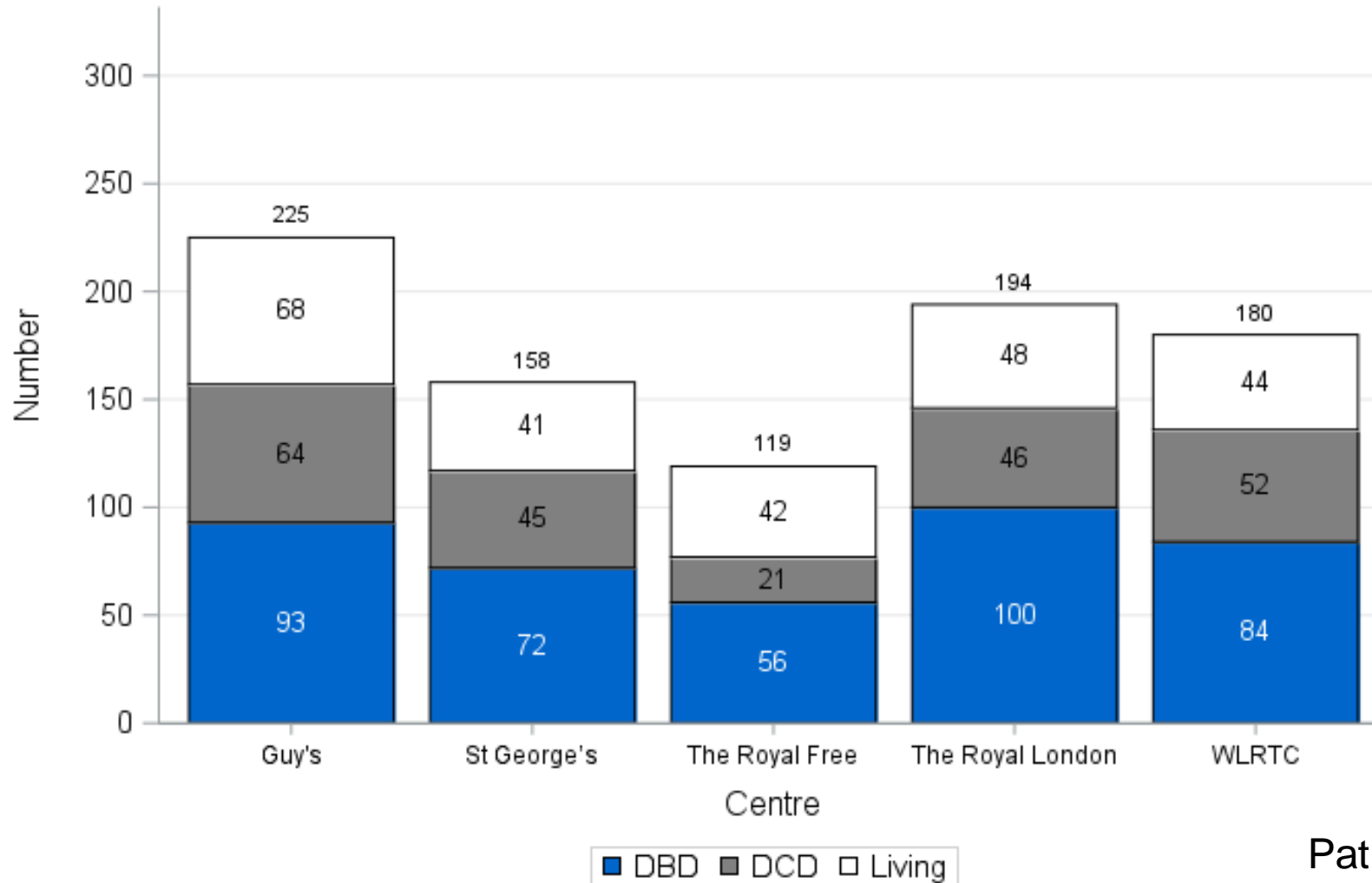


Transplants

UK Kidney Transplants

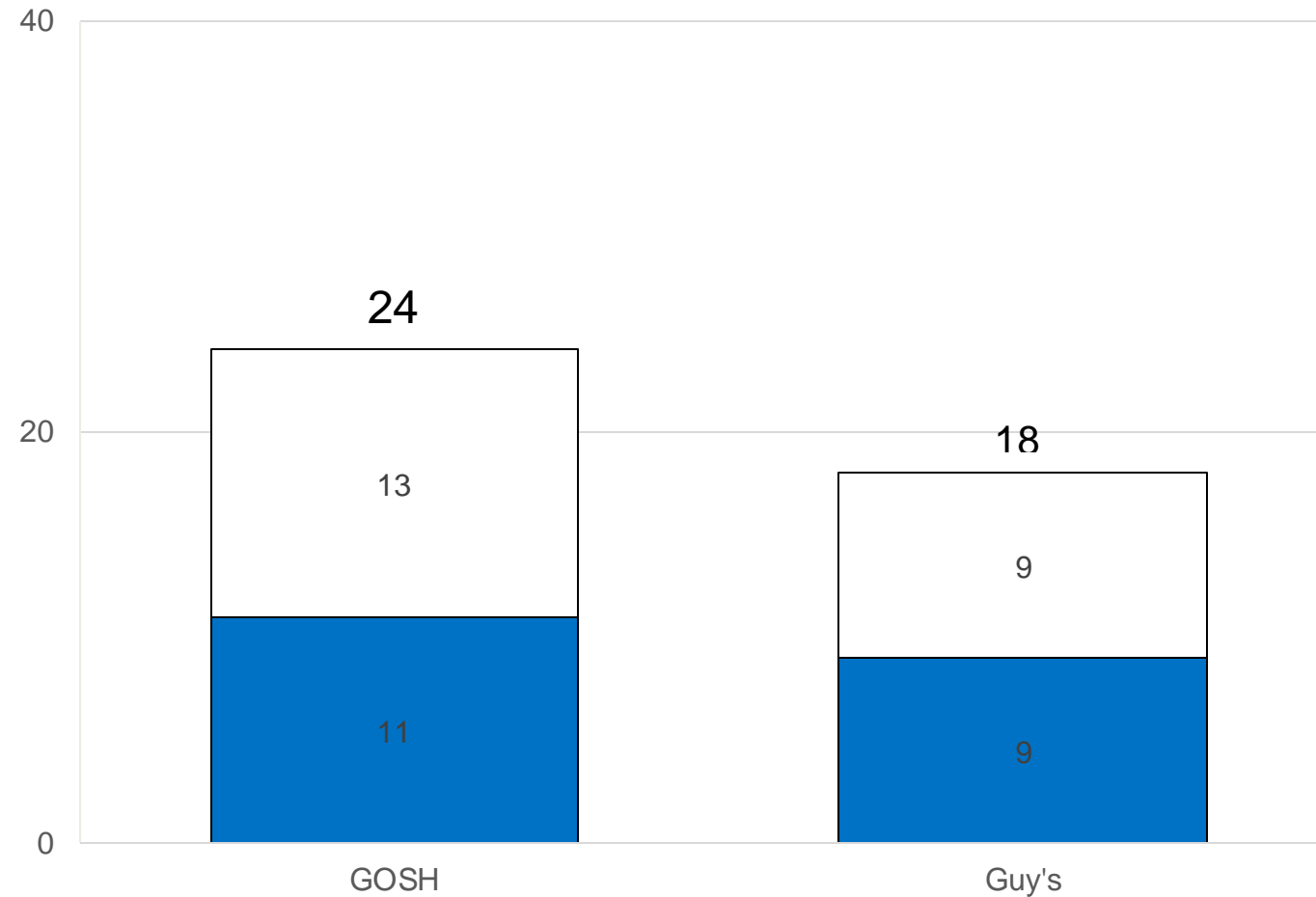


Kidney Transplants in London - Adults



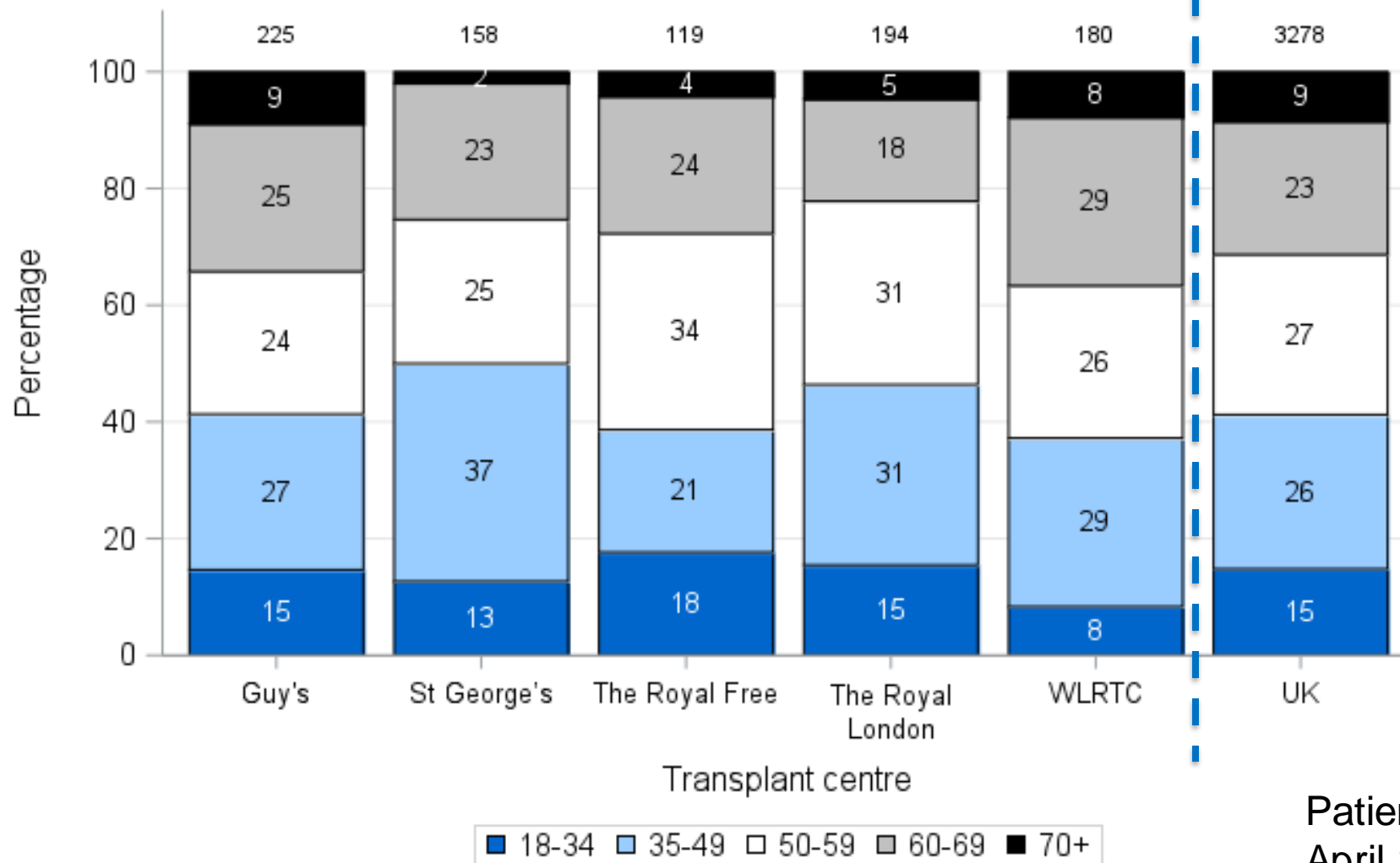
Patients transplanted
April 2018- March 2019

Kidney Transplants in London - Paediatric



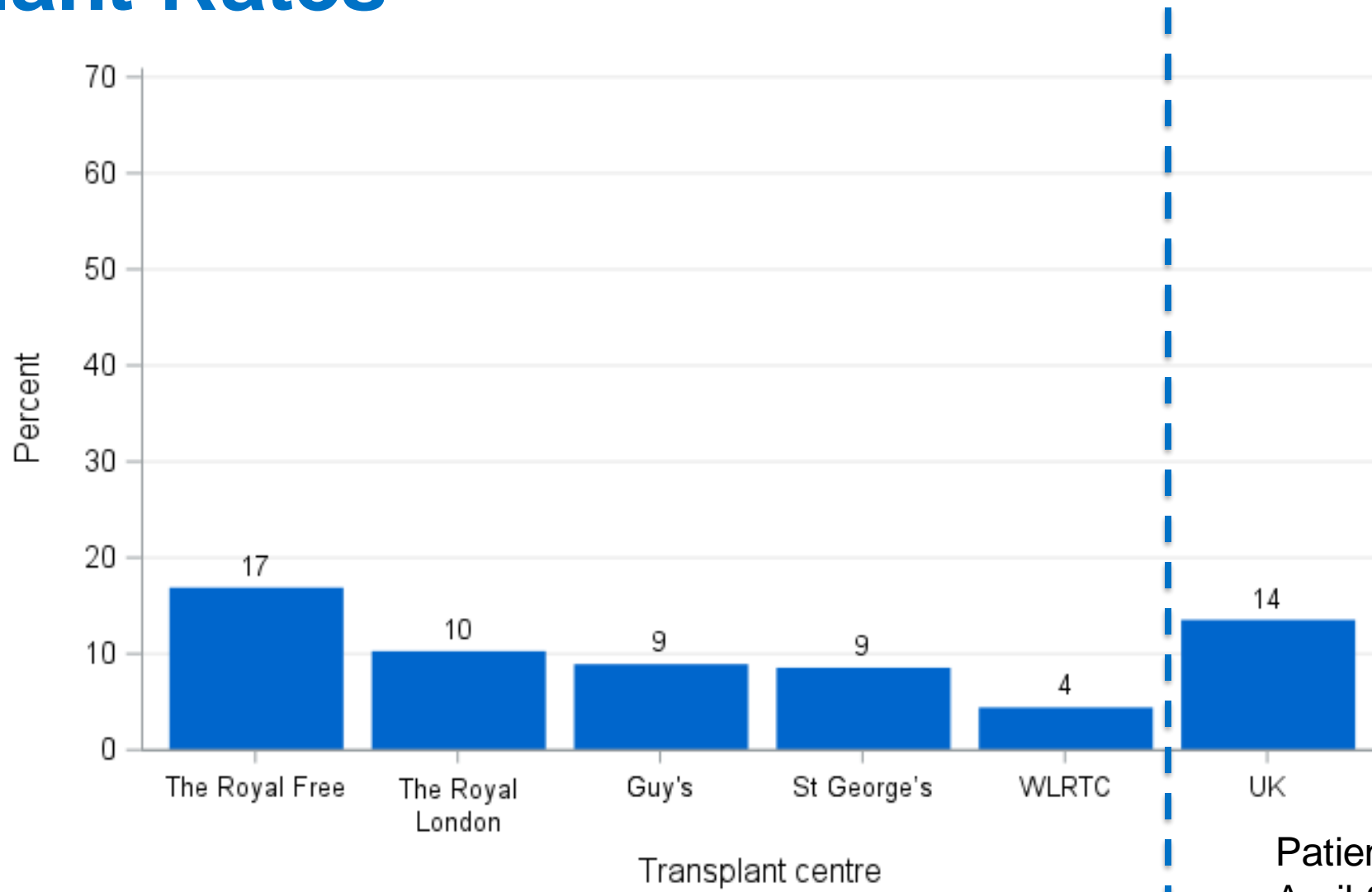
Patients transplanted
April 2018- March 2019

Demographics – Age



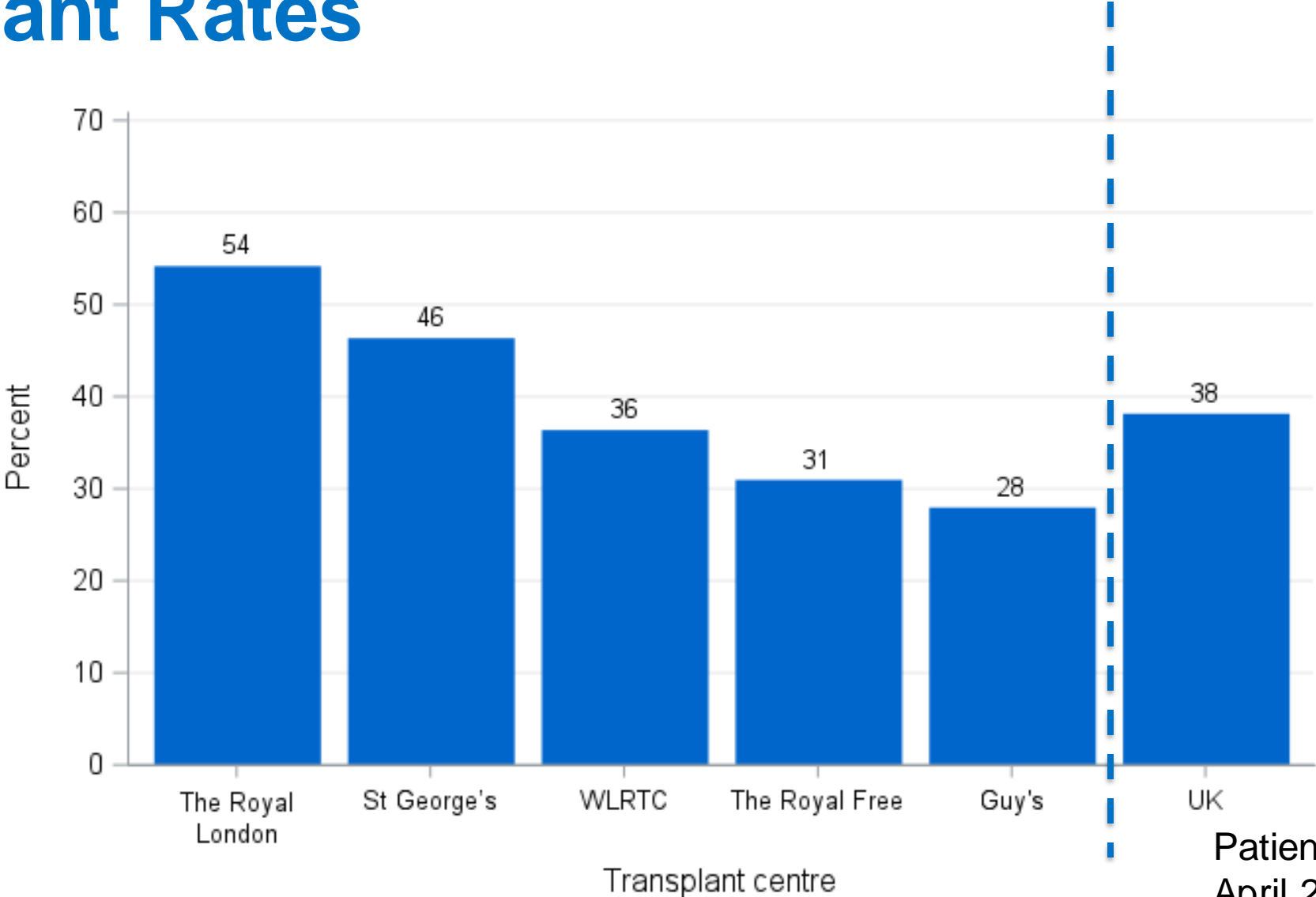
Patients transplanted
April 2018- March 2019

Deceased Donor Pre-emptive Transplant Rates



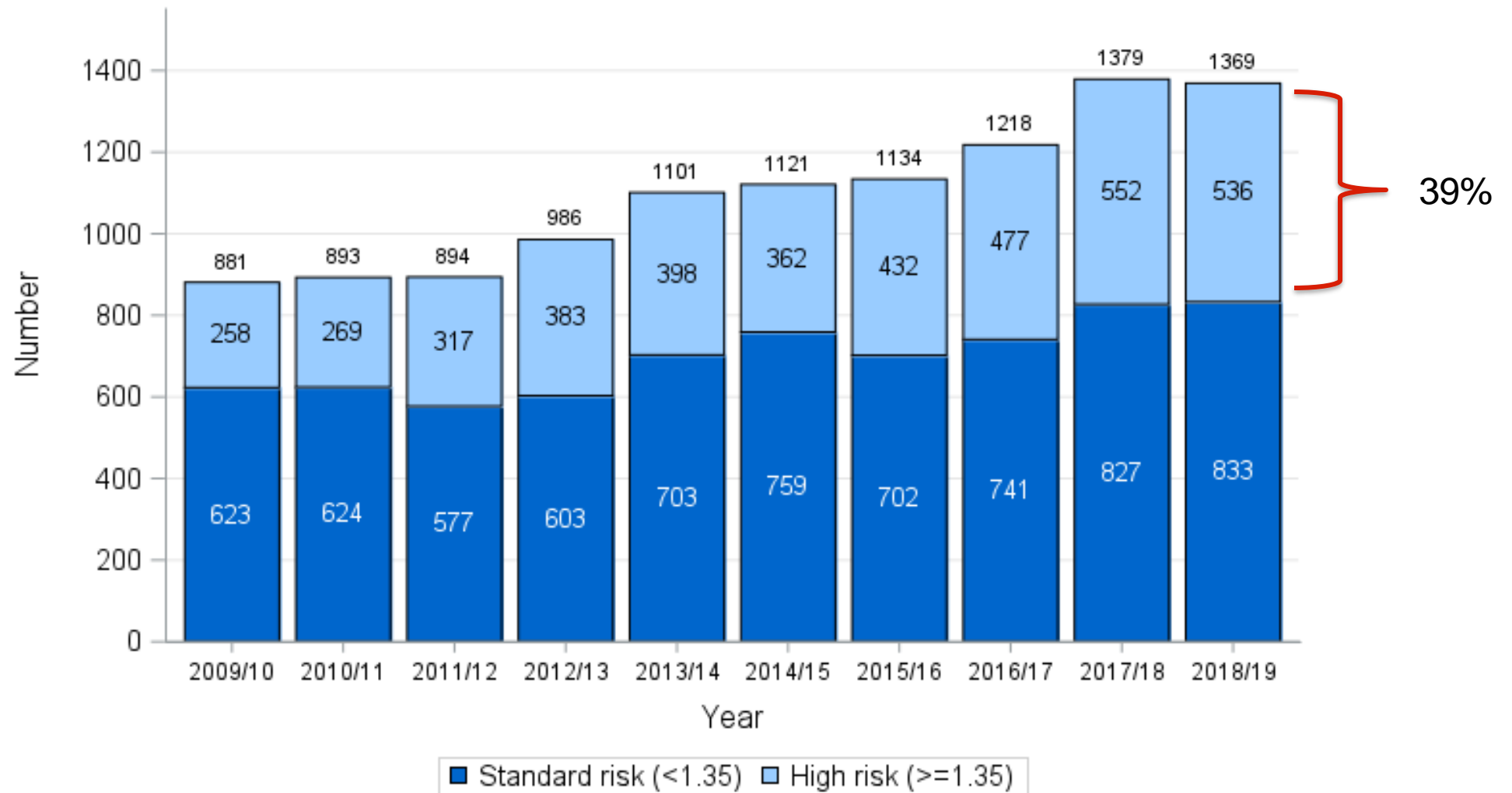
Patients transplanted
April 2018- March 2019

Living Donor Pre-emptive Transplant Rates

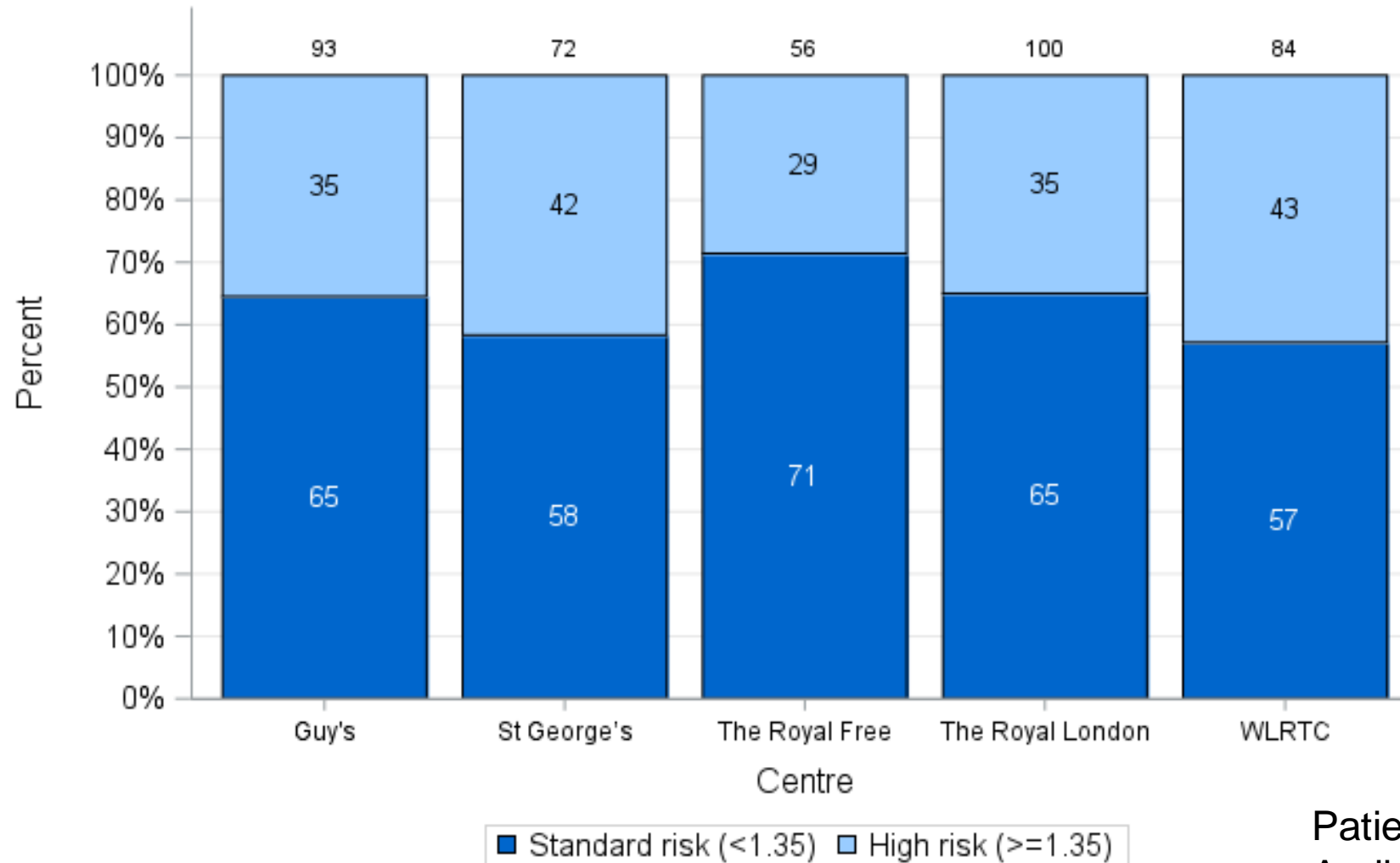


Patients transplanted
April 2018- March 2019

UK KDRI - Adults



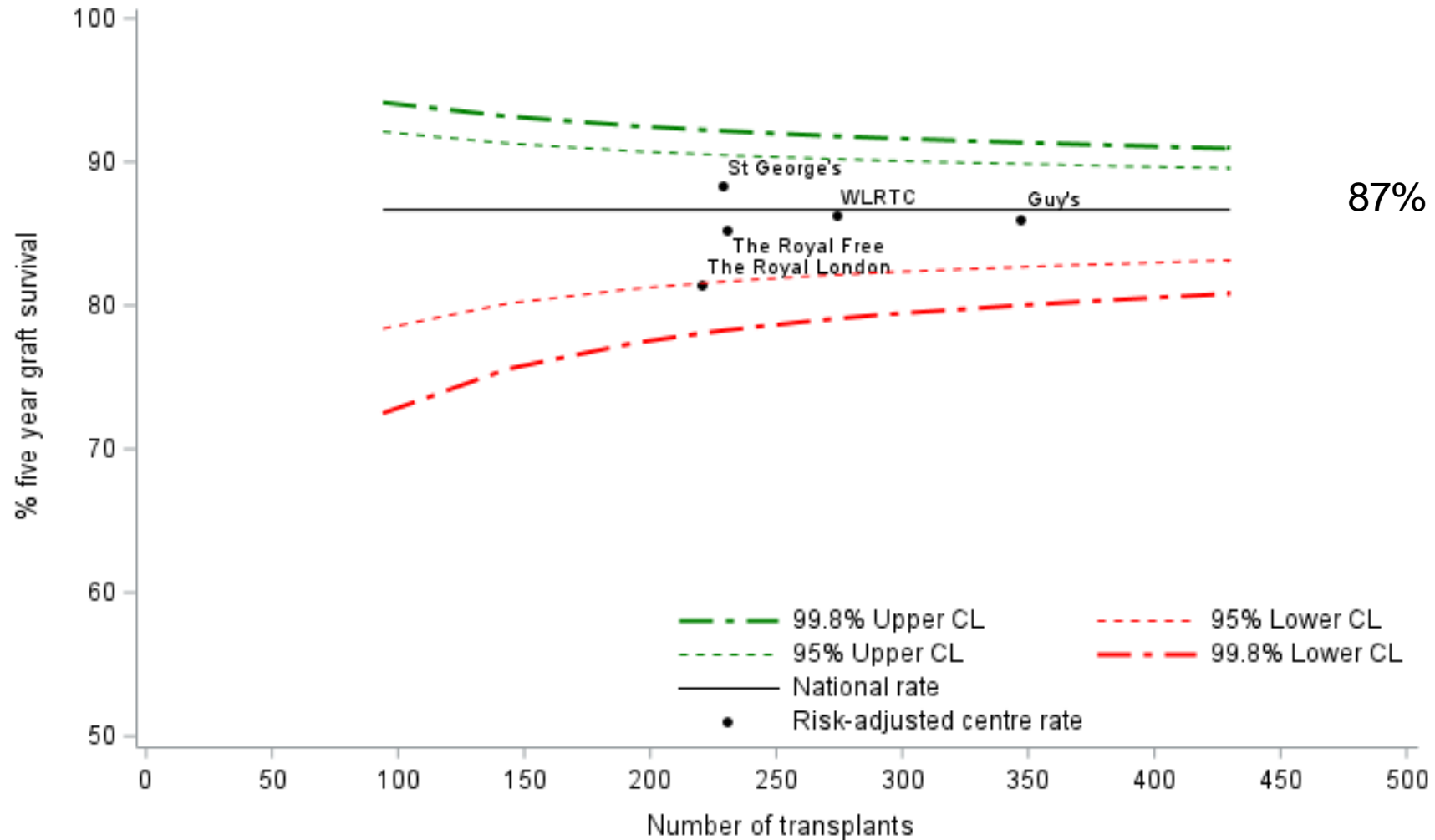
UK KDRI London - Adults



Patients transplanted
April 2018- March 2019

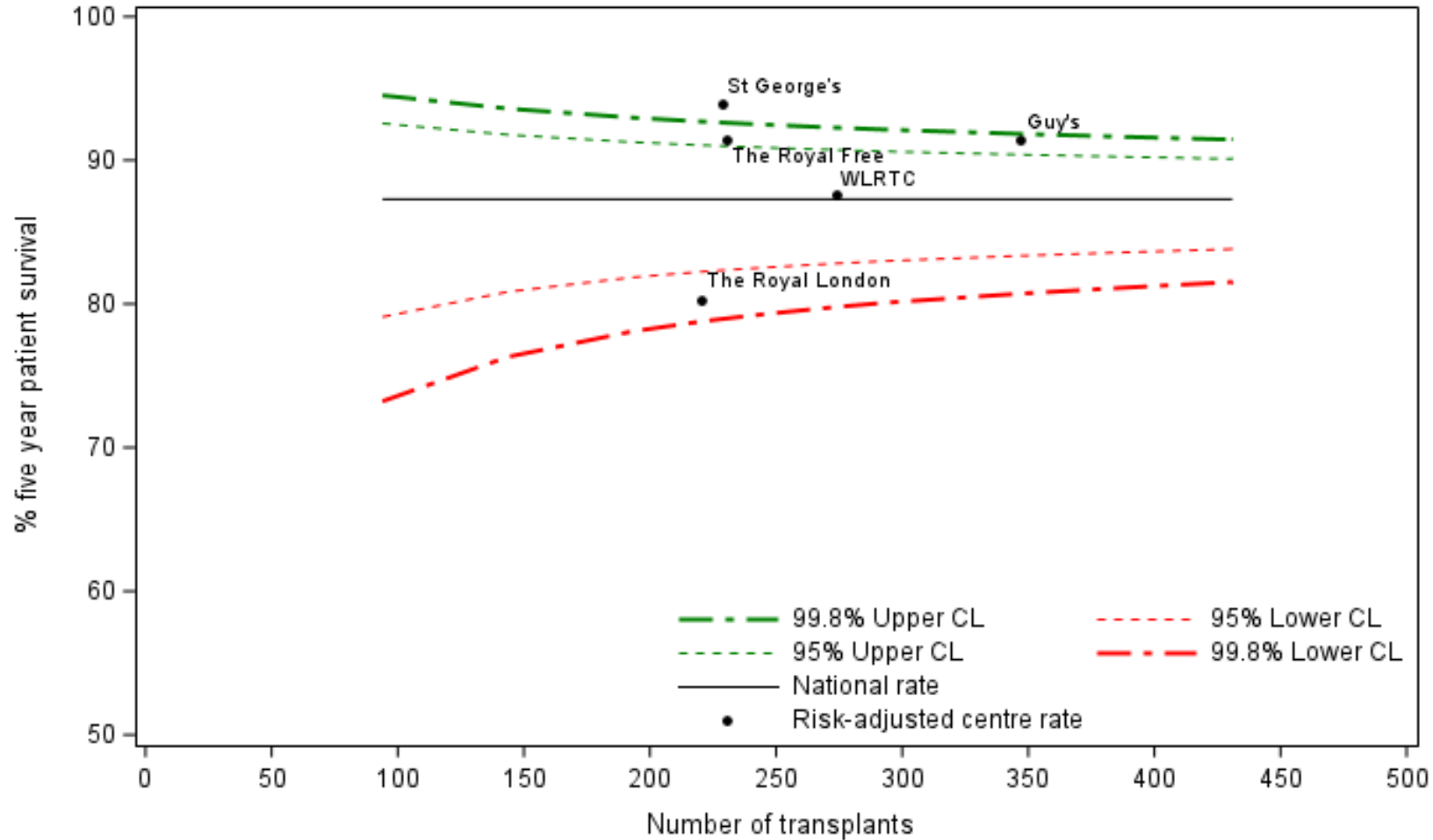
Outcomes

Five Year Graft Survival – Deceased donor



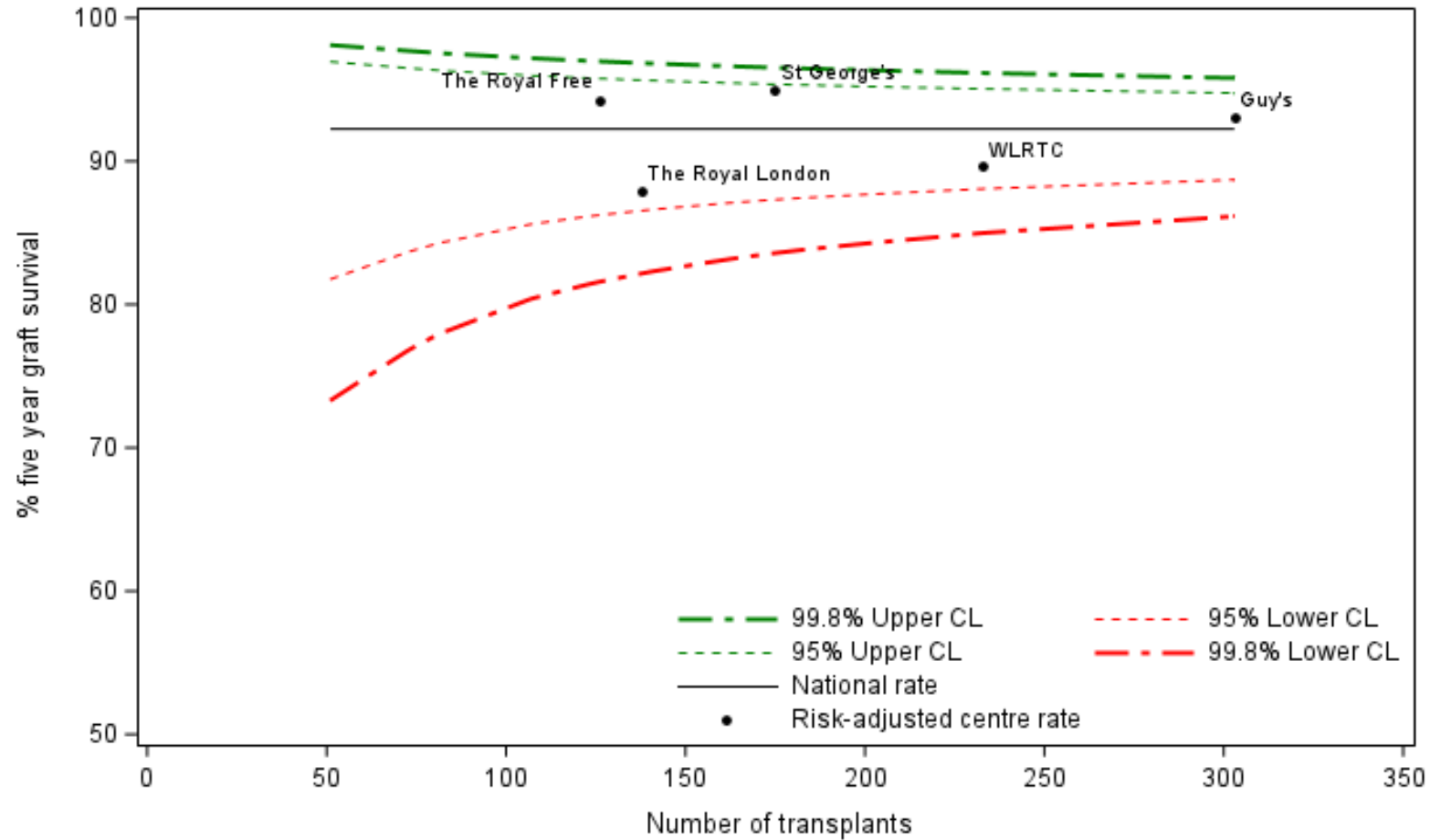
87% at 5 years

Five Year Patient Survival – Deceased donor



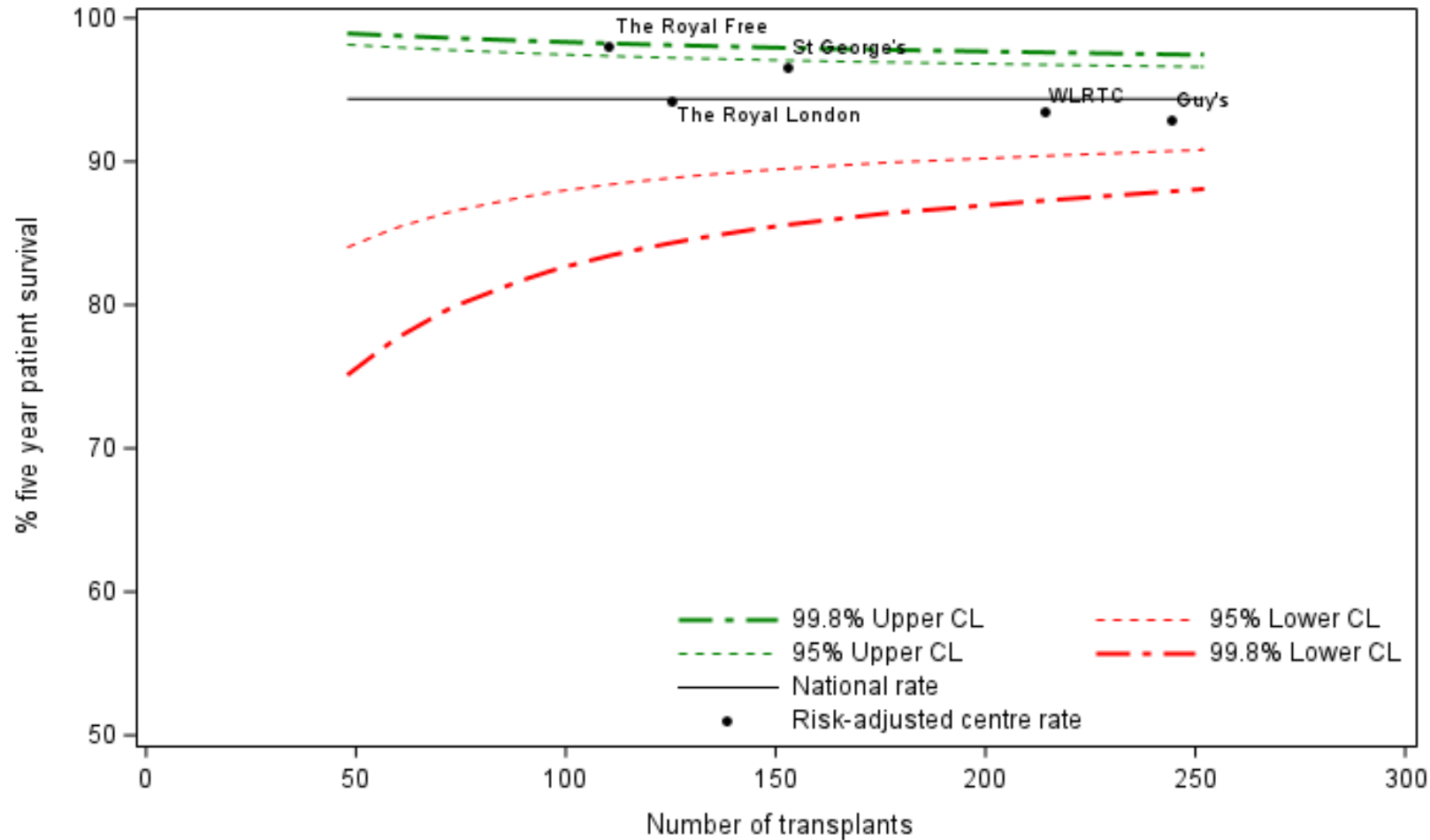
87% at 5 years

Five Year Graft Survival – Living donor



92% at 5 years

Five Year Patient Survival – Living donor



94% at 5 years

New Offering Scheme

2 month activity

New Kidney Offering Scheme

All **deceased** donor kidneys are allocated through scheme:

Tier A Patients with matchability score = 10 or 100% cRF or ≥ 7 years

Allow blood group O to B, HLA level 4 transplants

Within Tier A; patients prioritised by matchability score and waiting time from dialysis

Tier B All other patients

Allow HLA level 4 transplants for matchability score 8 and 9 only

Within Tier B; patients prioritised by point score

Factors included in points score:

Donor and recipient risk index match (D1-D4, R1-R4),

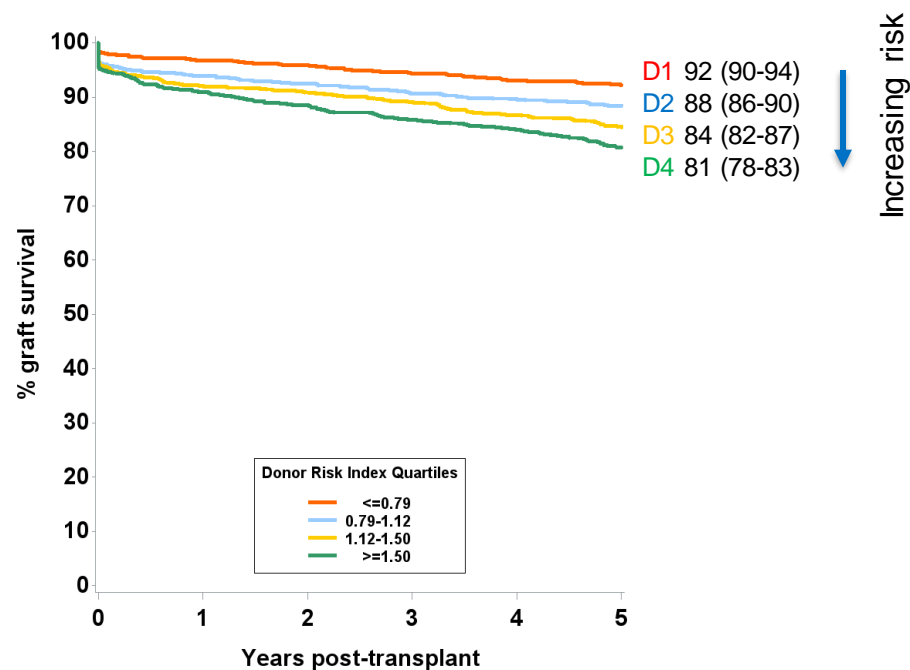
Waiting time from earliest of start of dialysis or activation date on the list,

HLA match & age points combined, Location points, Matchability points,

Total mismatch points, Blood group points

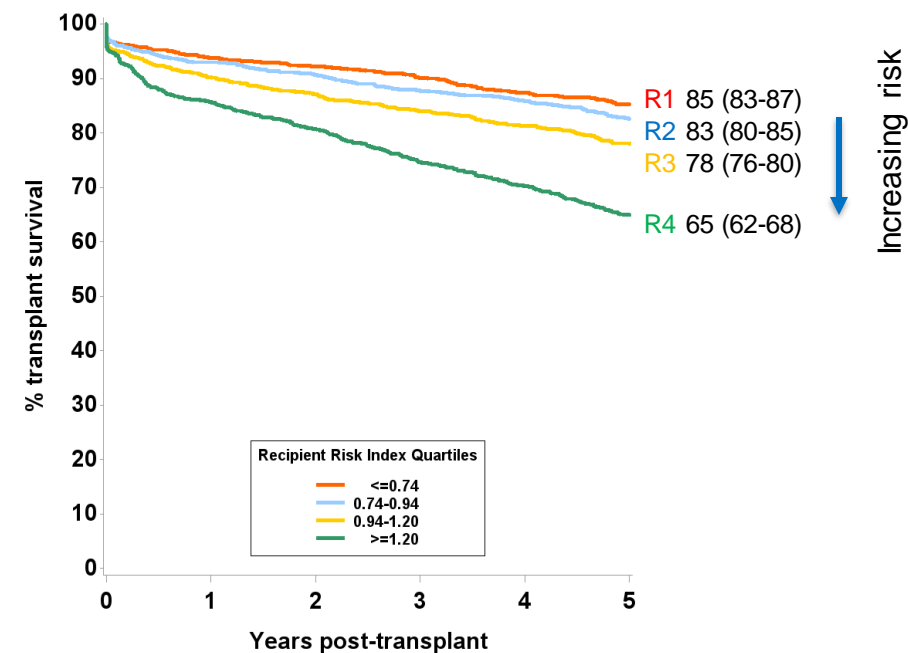
Donor Risk Index Cox model: 5 year graft survival

Donor Factor	Hazard Ratio	p-value
Age	1.02	<0.0001
Height	0.86	0.0005
Hospital stay	1.02	0.006
CMV	1.2	0.02
eGFR	0.98	0.02
Female	0.83	0.04
Hypertension	1.15	0.1



Recipient Risk Index Cox model: 5 year transplant survival

Recipient Factor	Hazard Ratio	p-value
Age (≤25)	1.00	0.9
Age (>25)	1.02	<0.001
Dialysis status	1.43	<0.001
Diabetic	1.32	0.003
Time on dialysis (years)	1.03	0.004



New Kidney Offering Scheme

- Scheme went live on September 11th 2019
- Both DBD and DCD kidneys are offered to named patients
- 361 transplants up to 31 October

2 month activity

		Sep 2018 – Aug 2019		Sep 2019 - Oct 2019	
Factor	Level	N	%	N	%
Matchability	Easy (1-3)	262	11	74	21
	Moderate (4-7)	1204	51	78	22
	Difficult (8-10)	877	37	207	58
HLA Mismatch	1	201	9	11	3
	2	755	32	57	16
	3	1249	53	135	38
	4	143	6	157	44

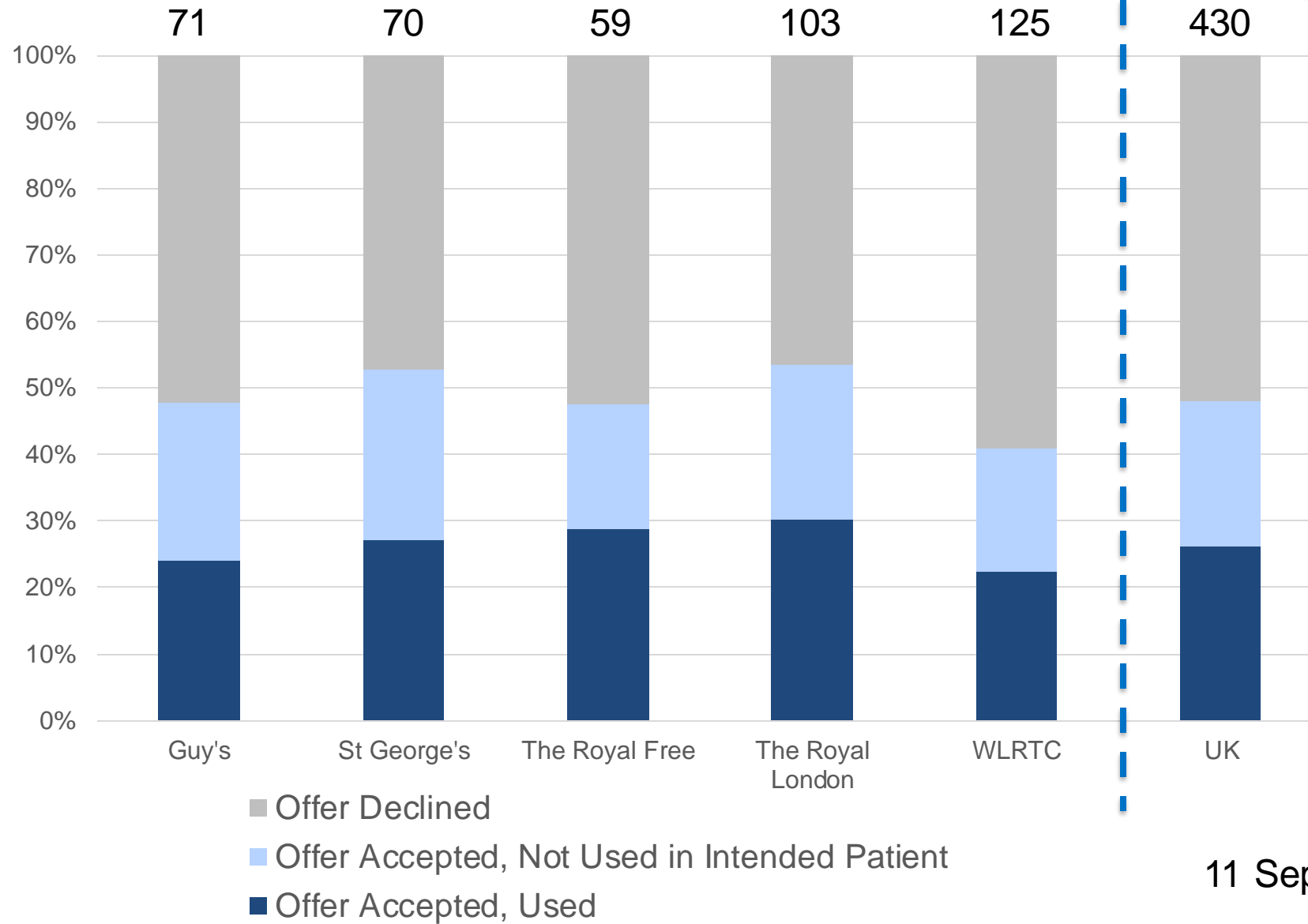
2 month activity

		Sep 2018 – Aug 2019		Sep 2019 - Oct 2019	
Factor	Level	N	%	N	%
Matchability	Easy (1-3)	262	11	74	21
	Moderate (4-7)	1204	51	78	22
	Difficult (8-10)	877	37	207	58
HLA Mismatch	1	201	9	11	3
	2	755	32	57	16
	3	1249	53	135	38
	4	143	6	157	44

2 month activity

		Sep 2018 – Aug 2019		Sep 2019 - Oct 2019	
Factor	Level	N	%	N	%
Matchability	Easy (1-3)	262	11	74	21
	Moderate (4-7)	1204	51	78	22
	Difficult (8-10)	877	37	207	58
HLA Mismatch	1	201	9	11	3
	2	755	32	57	16
	3	1249	53	135	38
	4	143	6	157	44

Offers



11 Sep – 31 Oct 2019

Transplants

	Sep 2018 – Aug 2019		Sep 2019 - Oct 2019	
	N	%	N	%
GOSH	13	1	0	0
Guy's	180	8	27	7
Royal Free	66	3	17	5
Royal London	160	7	29	8
St George's	129	5	19	5
WLRTC	133	6	30	8
London	681	29	122	34
UK	2348	100	361	100

Summary

- Kidney transplant list is decreasing
- The number of kidney transplants has increased over the past 10 years, with more use of higher risk donors
- Outcomes in London are in line with those in the rest of the UK
- The new Kidney Offering Scheme went live on September 11th 2019, giving more opportunities for transplant for difficult to match patients

Acknowledgements

- Rebecca Hendry
- Rachel Hogg
- Chloe Brown
- Lisa Mumford
- Gareth Jones, The Royal Free

Annual reports and accompanying slides available at:

<https://www.odt.nhs.uk/statistics-and-reports/organ-specific-reports/>