

**Length of the deceased organ donation and
transplantation process**

Six-monthly report

1 April 2012 - 30 September 2019

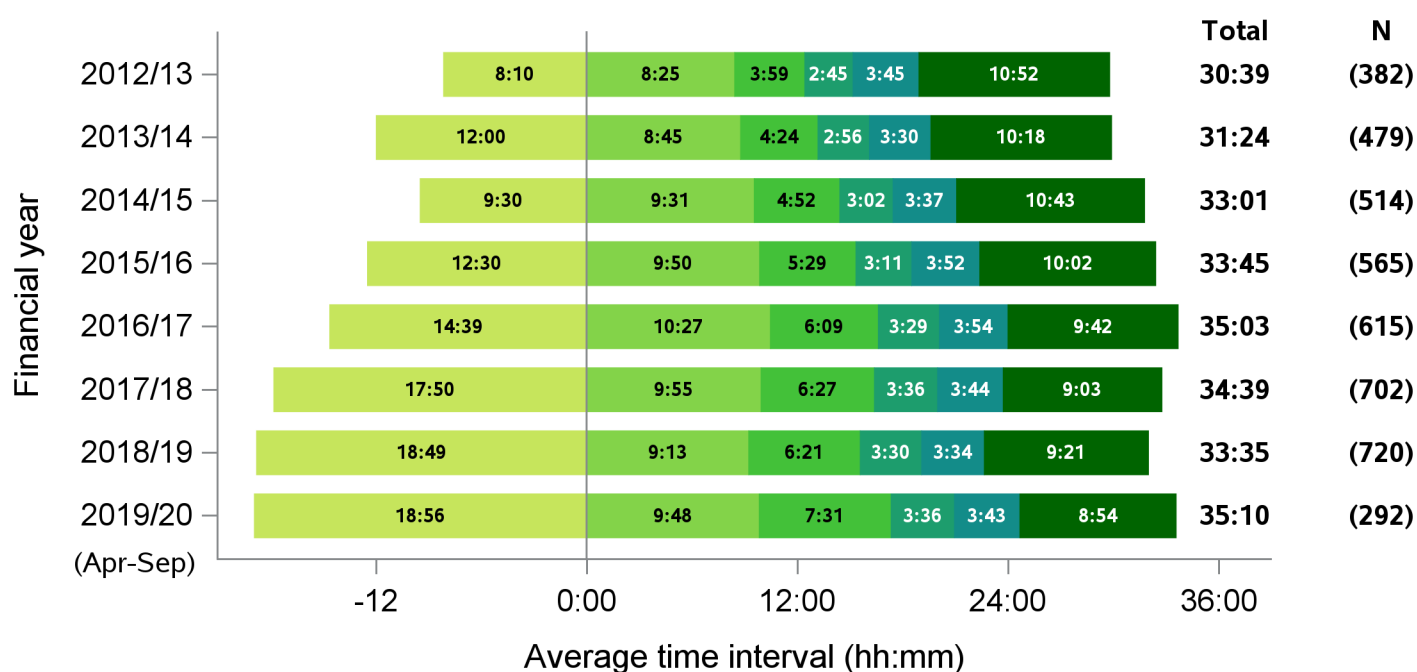
Produced 8 October 2019

Statistics and Clinical Studies



Summary of UK activity

Figure 1 - Median times of DBD organ donation process, UK, 1 April 2012 - 30 September 2019



Median time from:

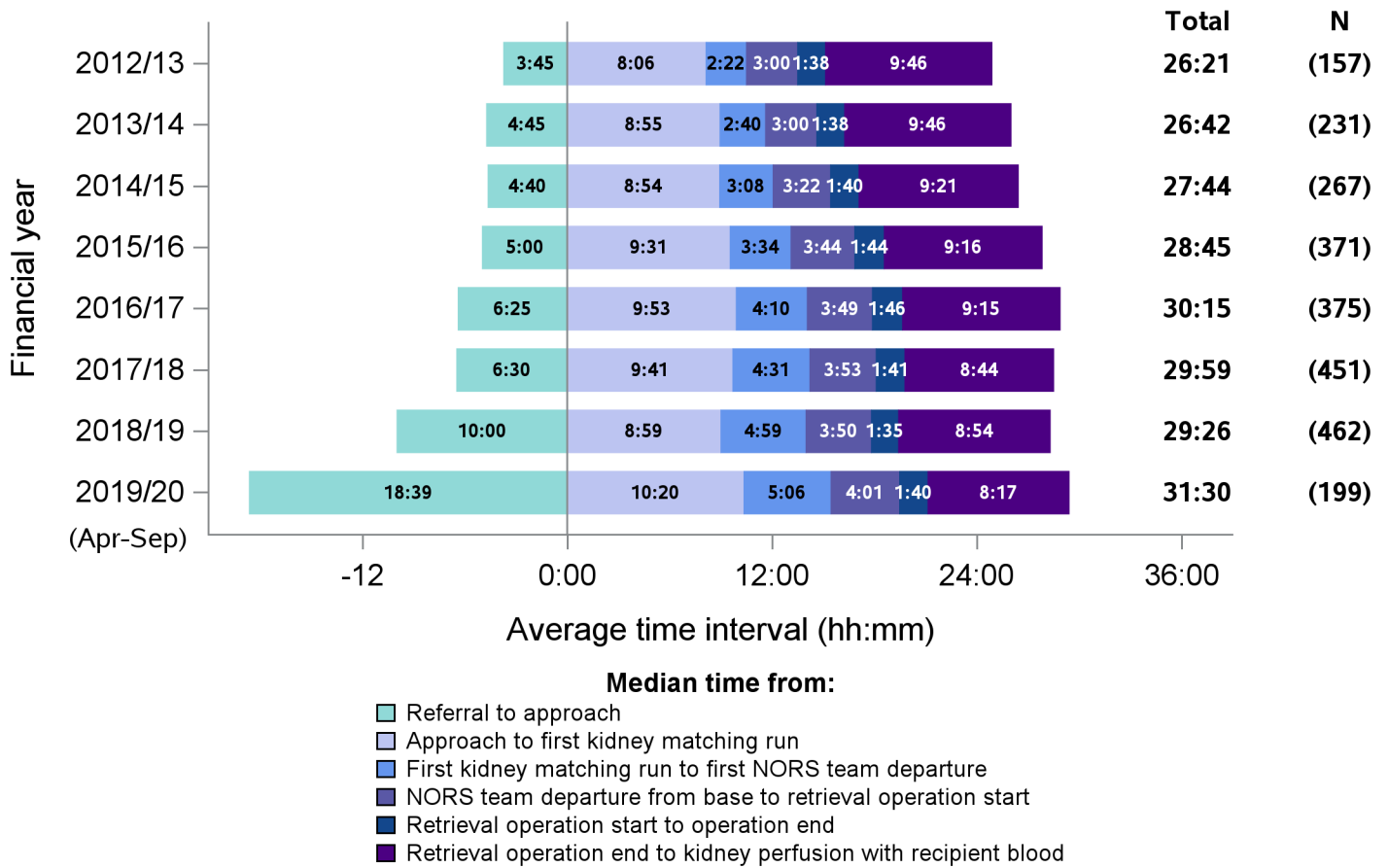
- Referral to approach
- Approach to first kidney matching run
- First kidney matching run to first NORS team departure
- NORS team departure from base to retrieval operation start
- Retrieval operation start to operation end
- Retrieval operation end to kidney perfusion with recipient blood

Time segment	Group with oversight responsibility
Referral to approach	National Organ Donation Committee
Approach to first kidney matching run	National Organ Donation Committee
First kidney matching run to first NORS team departure	ODT Hub
NORS team departure from base to retrieval operation start	Retrieval Advisory Group
Retrieval operation start to operation end	Retrieval Advisory Group
Retrieval operation end to kidney perfusion with recipient blood	Retrieval Advisory Group

It is important to note when interpreting all timings charts:

- To aid interpretation of the process following approach, time from referral to formal approach is presented before 0. This period is also excluded from the total median calculation
- If both a cardiothoracic and abdominal NORS team attend a donor; the earliest departure time is selected, and similarly the earliest retrieval operation start time
- The latest operation end time is selected, to signify the end of all donor surgery
- N values do not correspond to the number of donors each year, this is the number of patients for which all time values were available
- Total medians do not equal the sum of all medians calculated
- All timings charts are presented on the same scale to allow for comparison

Figure 2 - Median times of DCD organ donation process, UK, 1 April 2012 - 30 September 2019

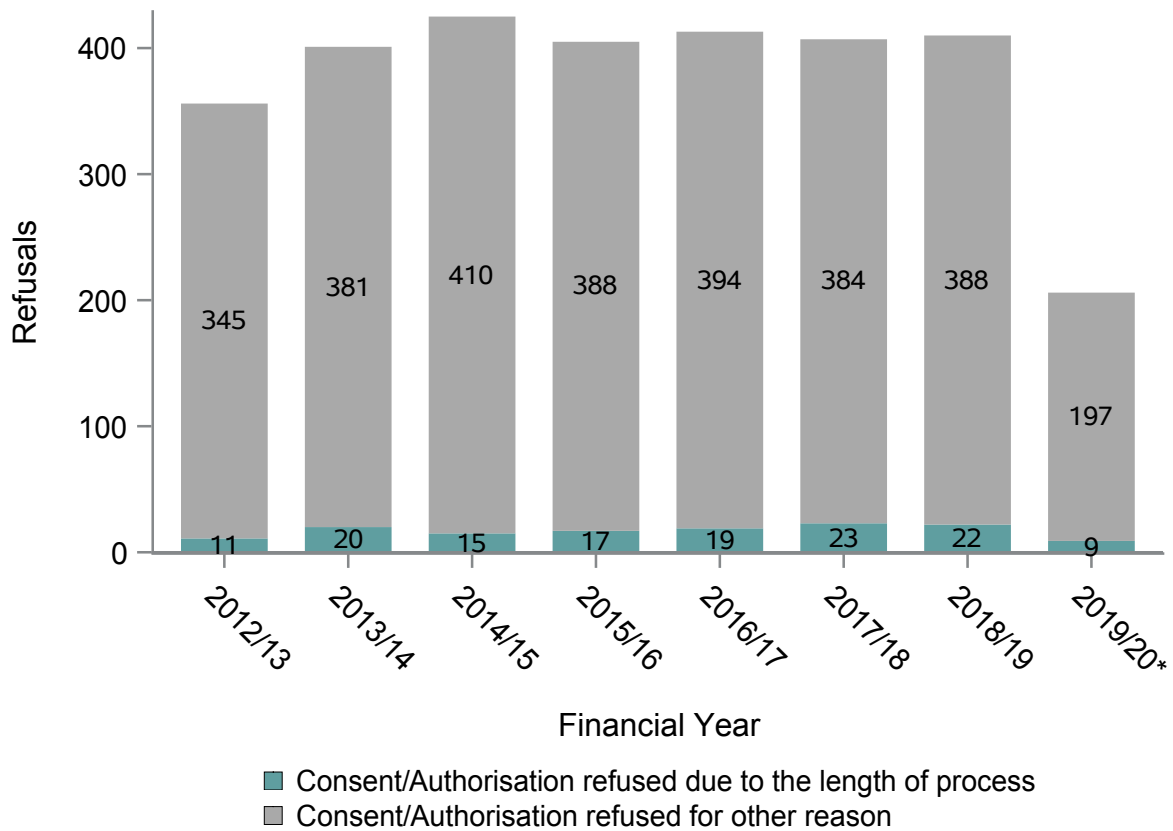


Time segment	Group with oversight responsibility
Referral to approach	National Organ Donation Committee
Approach to first kidney matching run	National Organ Donation Committee
First kidney matching run to first NORS team departure	ODT Hub
NORS team departure from base to retrieval operation start	Retrieval Advisory Group
Retrieval operation start to operation end	Retrieval Advisory Group
Retrieval operation end to kidney perfusion with recipient blood	Retrieval Advisory Group

Consent/authorisation not ascertained due to 'family felt the length of time for donation process was too long'

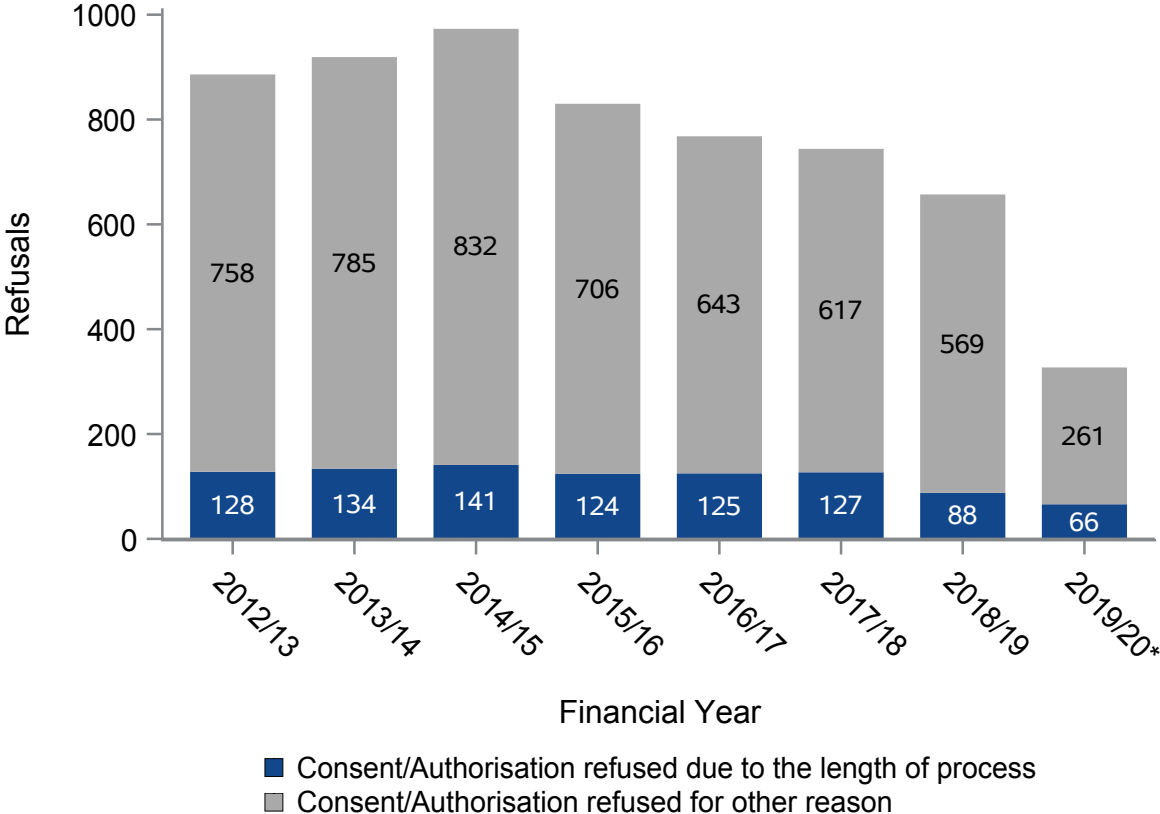
Table 1 Approaches and refusals in 2019/20 (Apr-Sep)						
Team name	Eligible DBD Donors			Eligible DCD Donors		
	Organ donation discussions	Organ donation not supported	Not supported due to length of process	Organ donation discussions	Organ donation not supported	Not supported due to length of process
Eastern	62	21	0	135	37	7
London	111	45	1	104	33	7
Midlands	85	23	3	124	45	7
North West	92	27	1	105	32	11
Northern	47	14	0	48	16	3
Northern Ireland	23	9	1	22	11	2
Scotland	48	13	0	60	28	11
South Central	41	7	0	66	29	3
South East	77	20	0	84	33	4
South Wales	20	3	2	30	10	3
South West	43	9	0	57	21	3
Yorkshire	67	15	1	73	32	5

**Figure 3 - Family refusals where organ donation discussion occurred, eligible DBD
1 April 2012 - 30 September 2019**



*April-September only

**Figure 4 - Family refusals where organ donation discussion occurred, eligible DCD
1 April 2012 - 30 September 2019**



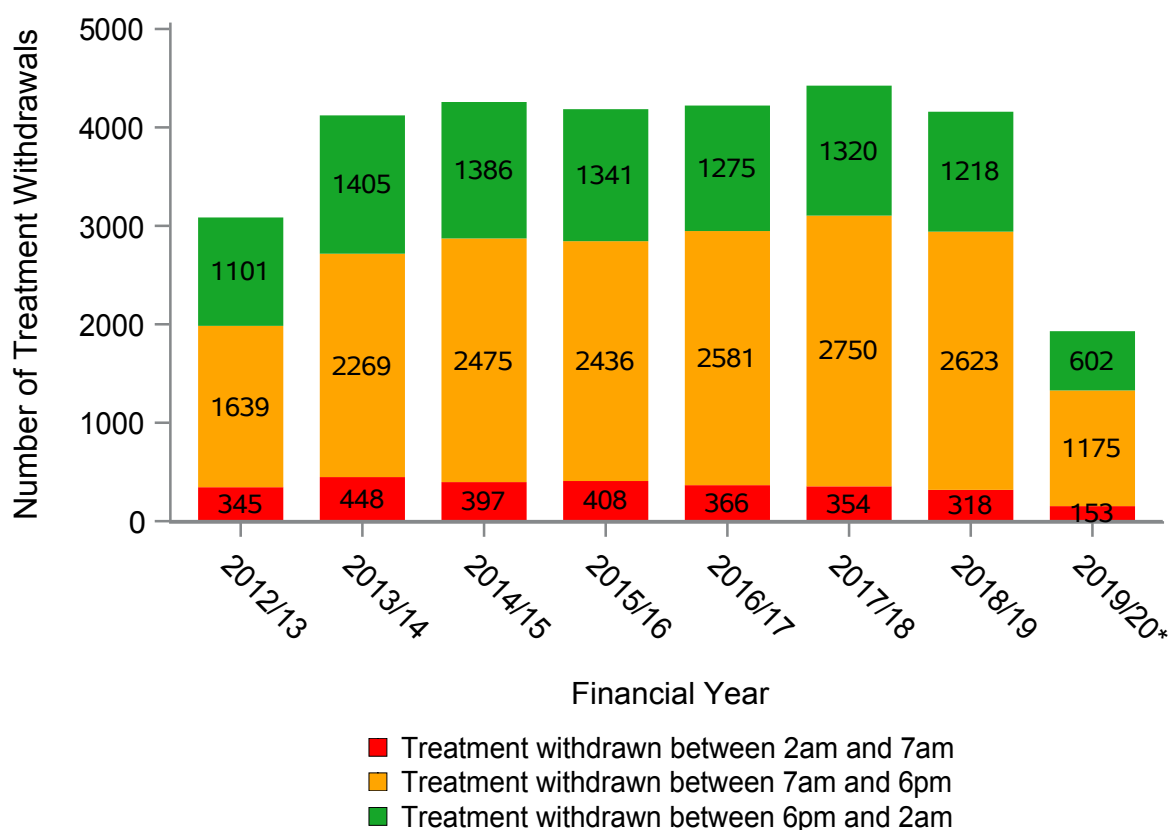
*April-September only

Withdrawal of life sustaining treatment (WLST)

Table 2 WLST timings 2019/20 (Apr-Sep)

Team name	Treatment withdrawn	Treatment withdrawn between 2am and 7am	
		N	%
Eastern	260	26	10
London	185	14	8
Midlands	254	18	7
North West	267	25	9
Northern	124	11	9
Northern Ireland	38	1	3
Scotland	115	10	9
South Central	172	13	8
South East	158	12	8
South Wales	83	5	6
South West	102	8	8
Yorkshire	172	10	6

Figure 5 - Timings of WLST, 1 April 2012 - 30 September 2019

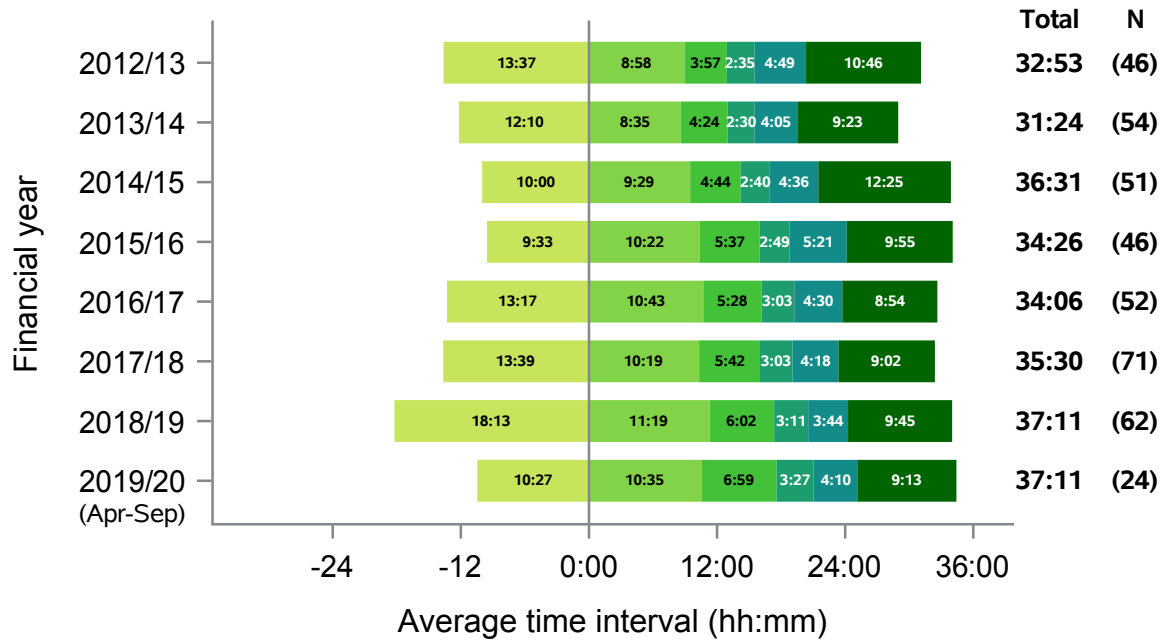


*April-September only

Data by Organ Donation Services Team

Eastern

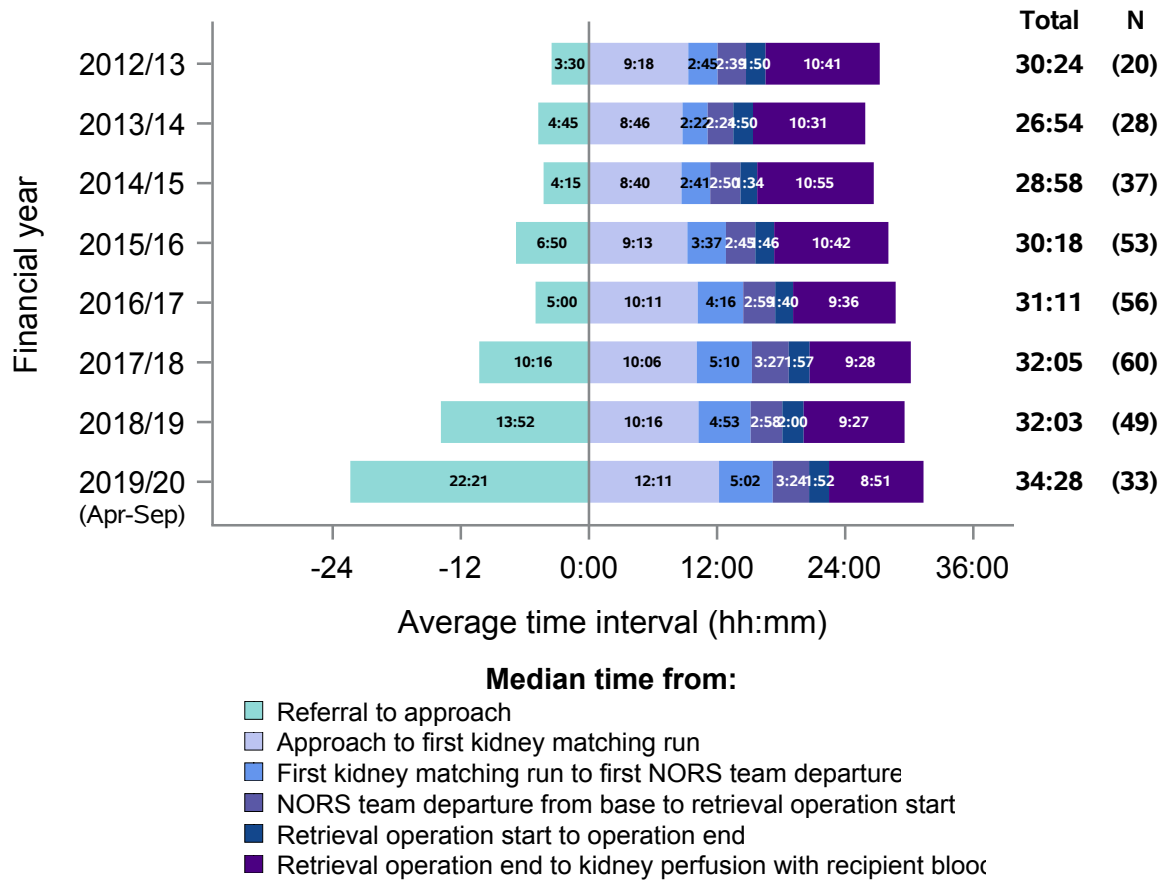
Figure 6 - Median times of DBD organ donation process, Eastern, 1 April 2012 - 30 September 2019



- Median time from:**
- Referral to approach
 - Approach to first kidney matching run
 - First kidney matching run to first NORS team departure
 - NORS team departure from base to retrieval operation start
 - Retrieval operation start to operation end
 - Retrieval operation end to kidney perfusion with recipient blood

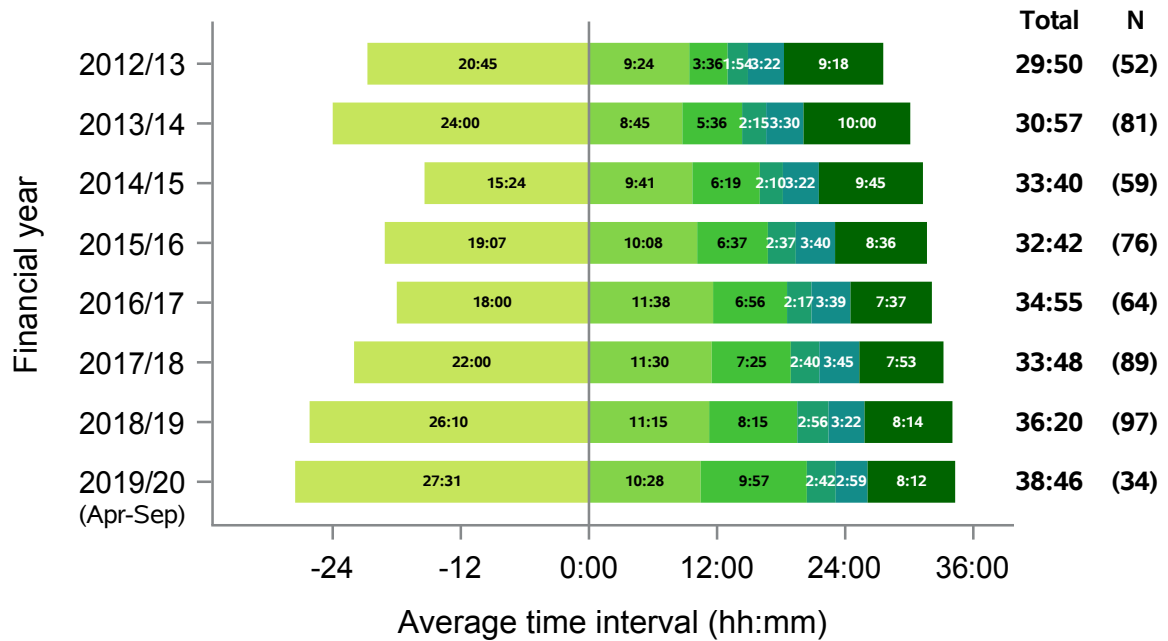
Eastern

Figure 7 - Median times of DCD organ donation process, Eastern, 1 April 2012 - 30 September 2019



London

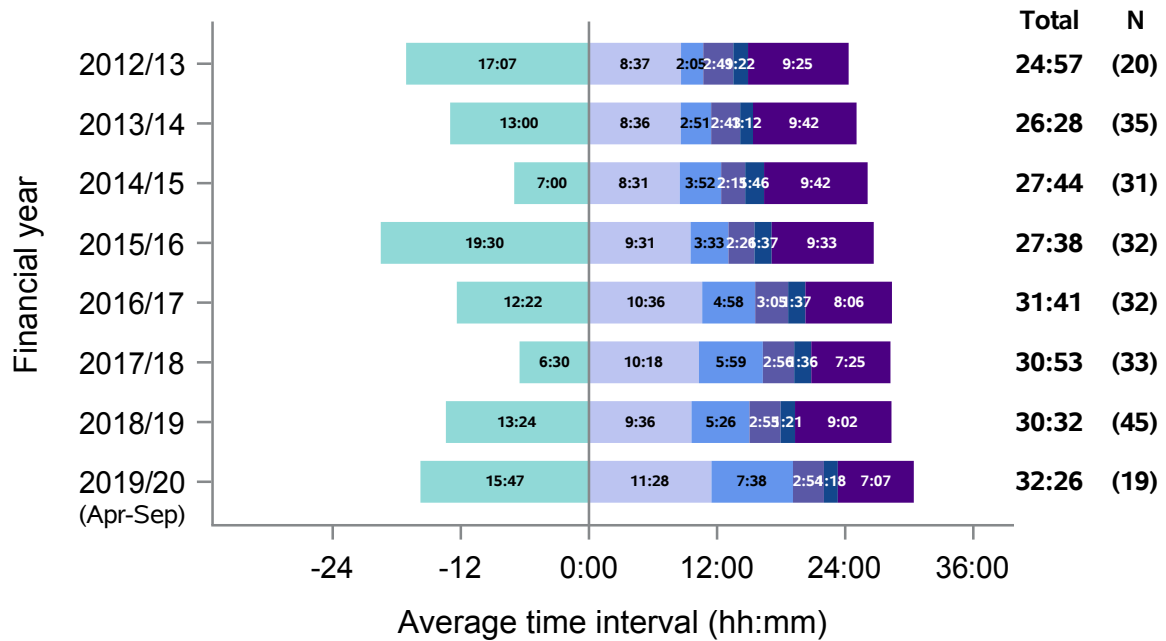
Figure 8 - Median times of DBD organ donation process, London, 1 April 2012 - 30 September 2019



- Median time from:**
- Referral to approach
 - Approach to first kidney matching run
 - First kidney matching run to first NORS team departure
 - NORS team departure from base to retrieval operation start
 - Retrieval operation start to operation end
 - Retrieval operation end to kidney perfusion with recipient blood

London

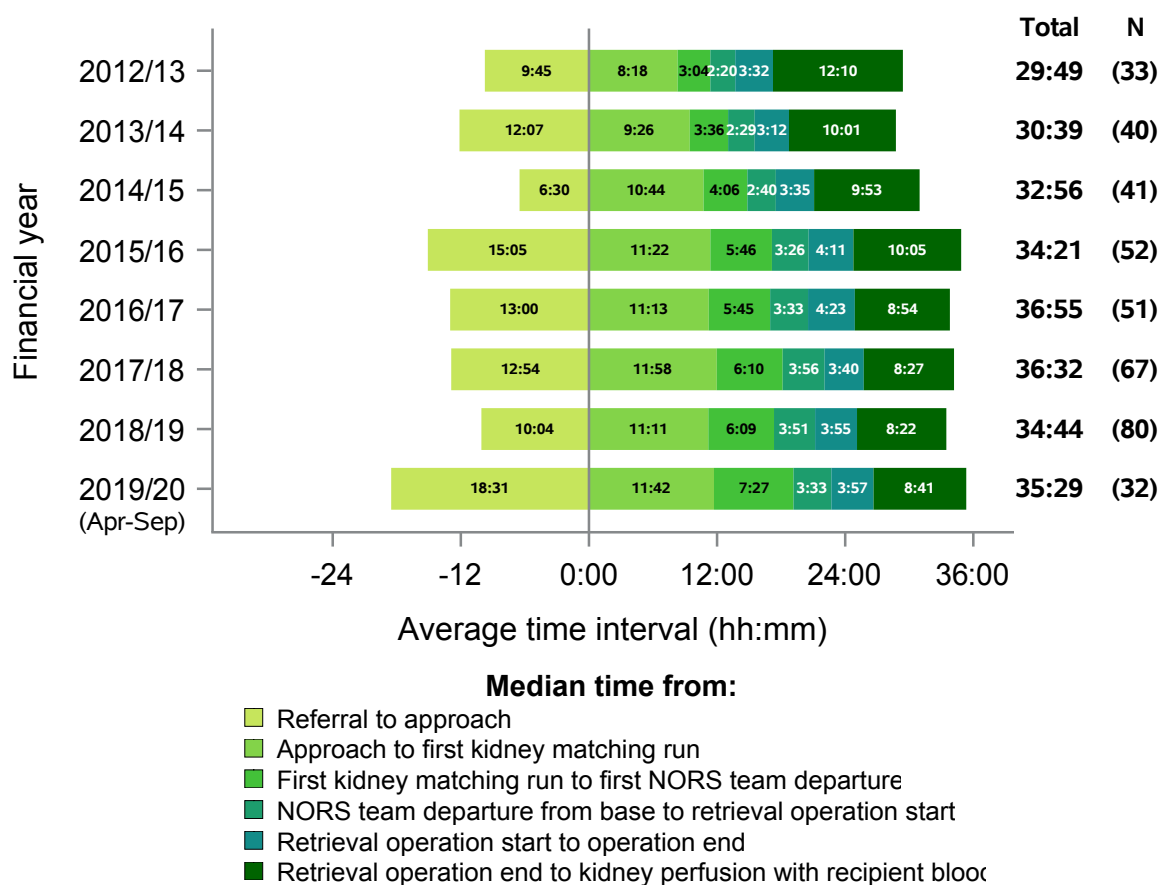
Figure 9 - Median times of DCD organ donation process, London, 1 April 2012 - 30 September 2019



- Median time from:**
- Referral to approach
 - Approach to first kidney matching run
 - First kidney matching run to first NORS team departure
 - NORS team departure from base to retrieval operation start
 - Retrieval operation start to operation end
 - Retrieval operation end to kidney perfusion with recipient blood

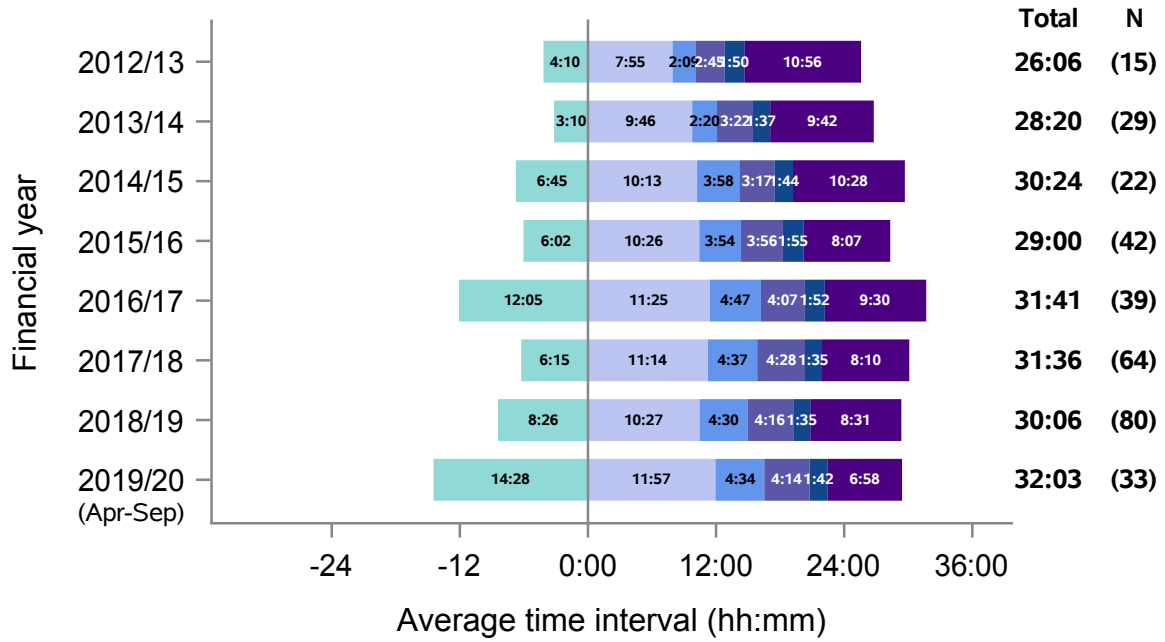
Midlands

Figure 10 - Median times of DBD organ donation process, Midlands, 1 April 2012 - 30 September 2019



Midlands

Figure 11 - Median times of DCD organ donation process, Midlands, 1 April 2012 - 30 September 2019

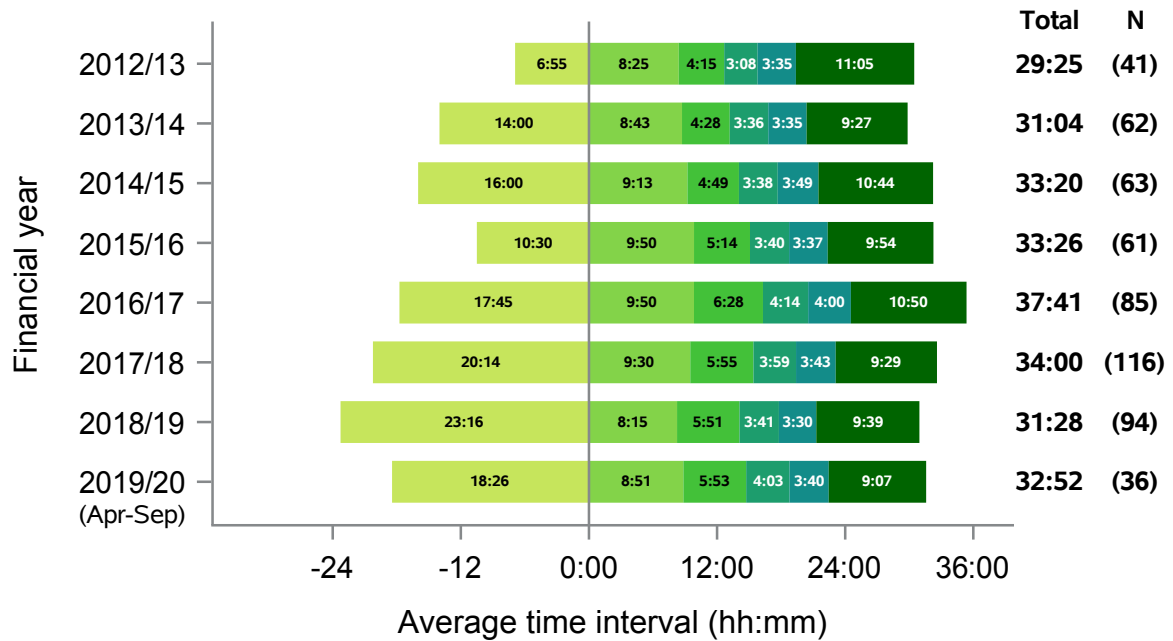


Median time from:

- Referral to approach
- Approach to first kidney matching run
- First kidney matching run to first NORS team departure
- NORS team departure from base to retrieval operation start
- Retrieval operation start to operation end
- Retrieval operation end to kidney perfusion with recipient blood

North West

Figure 12 - Median times of DBD organ donation process, North West, 1 April 2012 - 30 September 2019

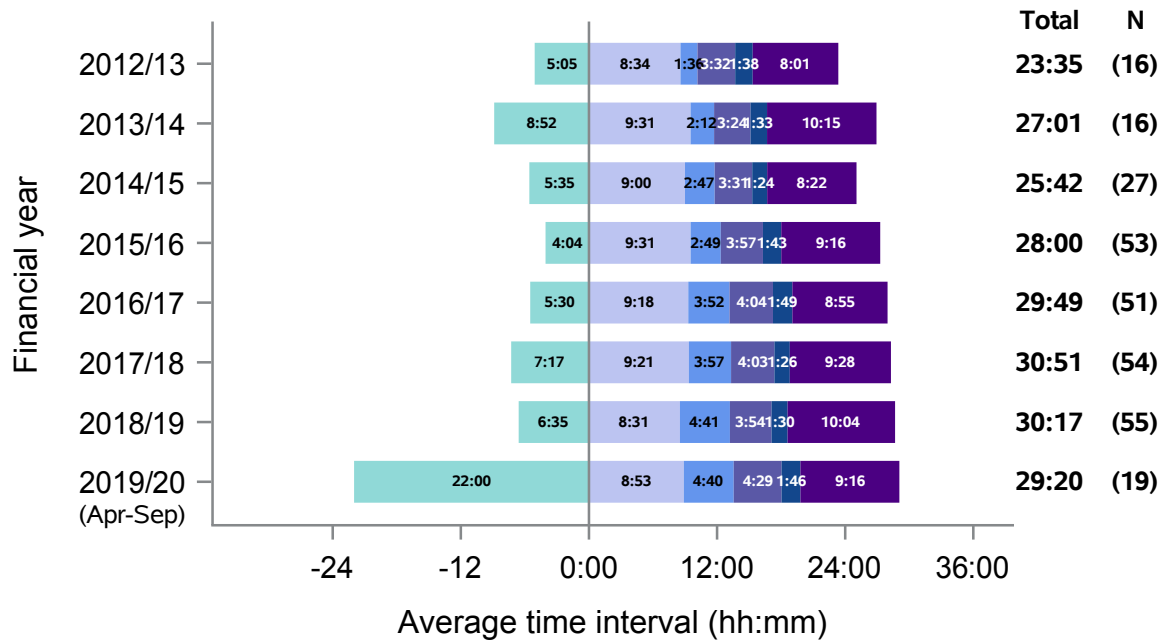


Median time from:

- Referral to approach
- Approach to first kidney matching run
- First kidney matching run to first NORS team departure
- NORS team departure from base to retrieval operation start
- Retrieval operation start to operation end
- Retrieval operation end to kidney perfusion with recipient blood

North West

Figure 13 - Median times of DCD organ donation process, North West, 1 April 2012 - 30 September 2019

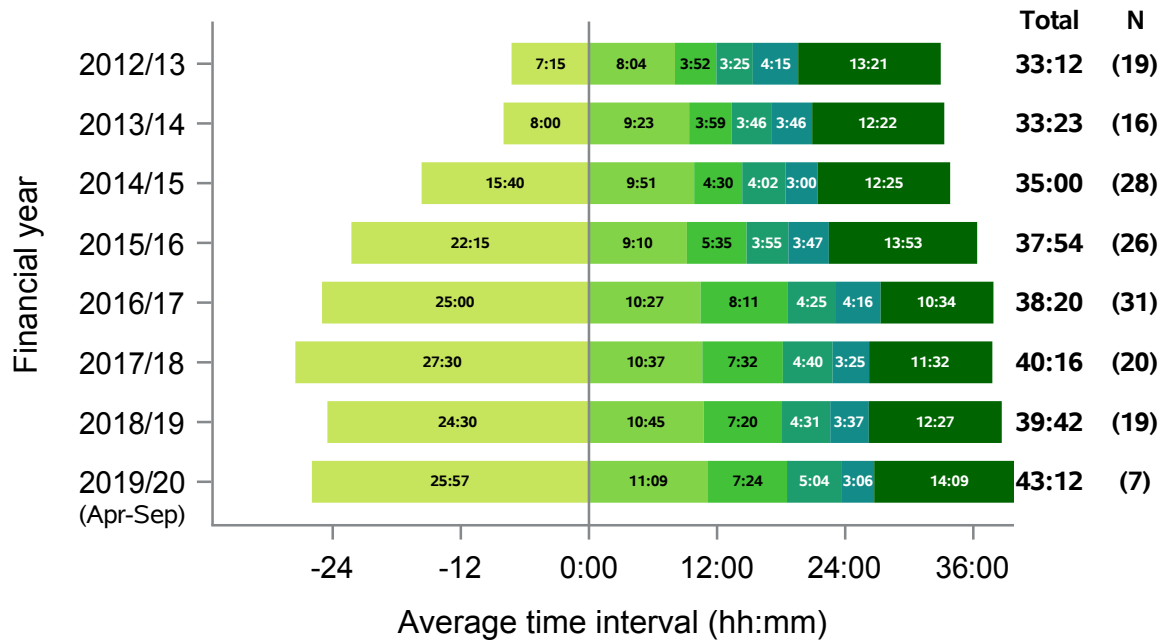


Median time from:

- Referral to approach
- Approach to first kidney matching run
- First kidney matching run to first NORS team departure
- NORS team departure from base to retrieval operation start
- Retrieval operation start to operation end
- Retrieval operation end to kidney perfusion with recipient blood

Northern Ireland

Figure 14 - Median times of DBD organ donation process, Northern Ireland, 1 April 2012 - 30 September 2019

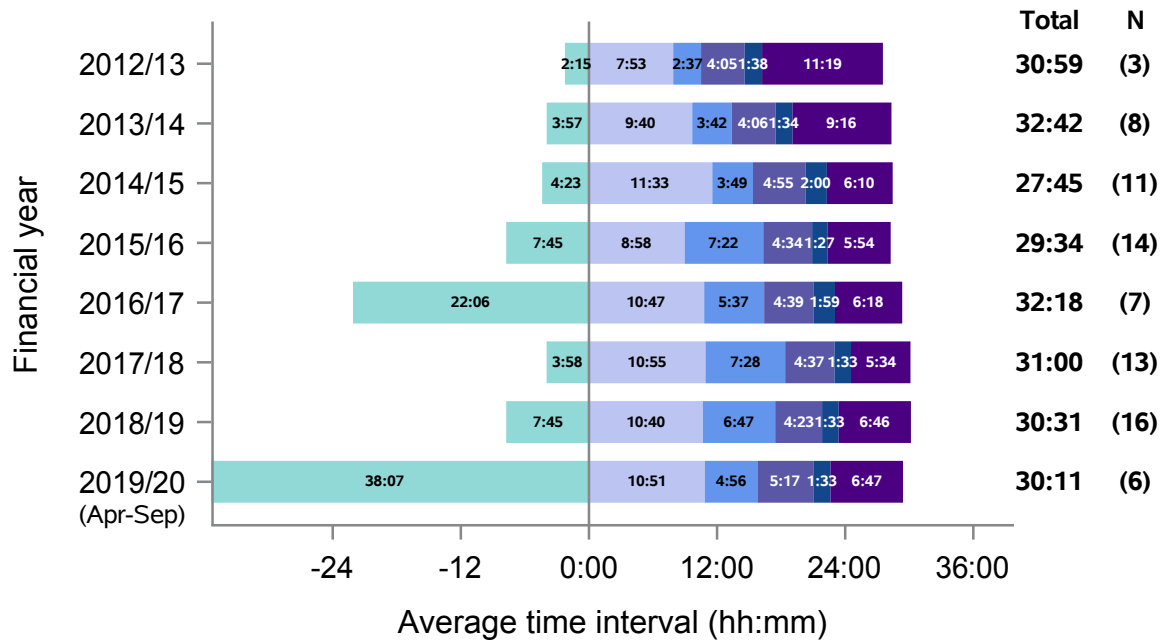


Median time from:

- Referral to approach
- Approach to first kidney matching run
- First kidney matching run to first NORS team departure
- NORS team departure from base to retrieval operation start
- Retrieval operation start to operation end
- Retrieval operation end to kidney perfusion with recipient blood

Northern Ireland

Figure 15 - Median times of DCD organ donation process, Northern Ireland, 1 April 2012 - 30 September 2019

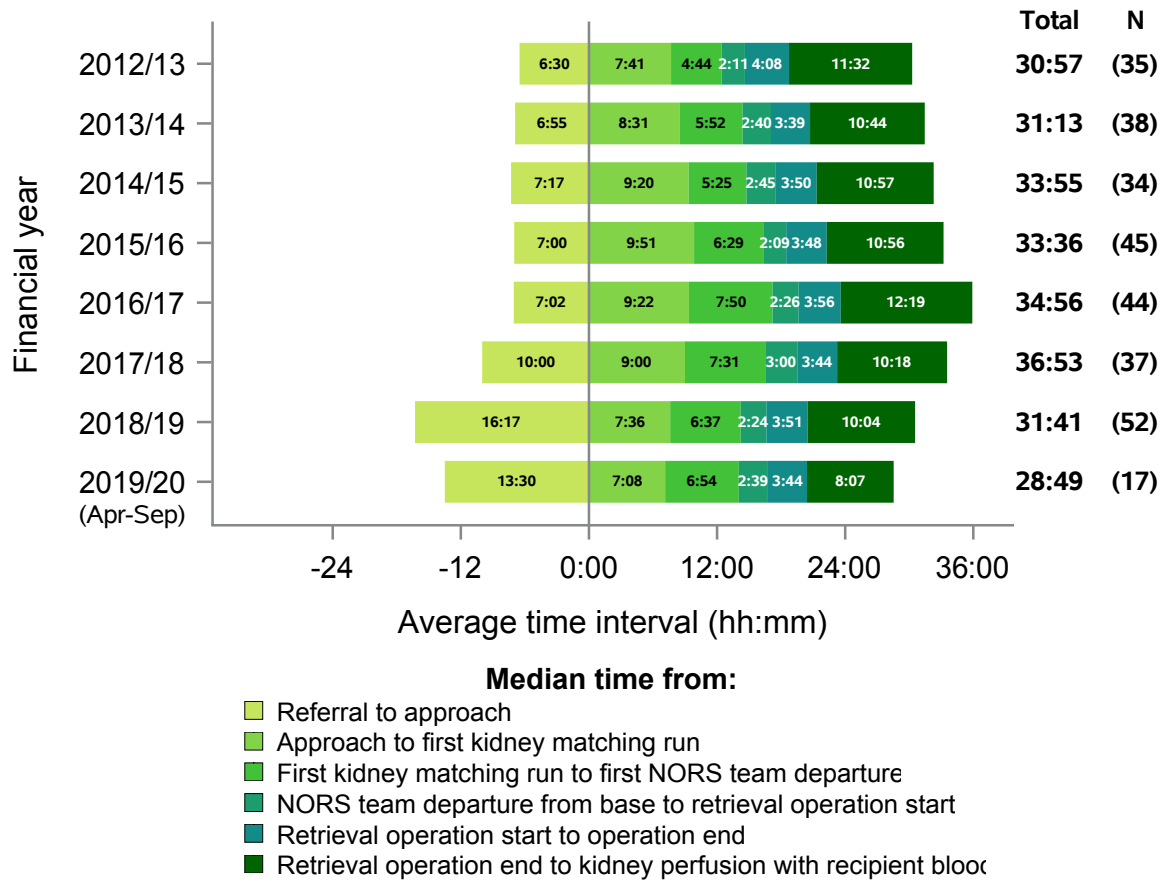


Median time from:

- Referral to approach
- Approach to first kidney matching run
- First kidney matching run to first NORS team departure
- NORS team departure from base to retrieval operation start
- Retrieval operation start to operation end
- Retrieval operation end to kidney perfusion with recipient blood

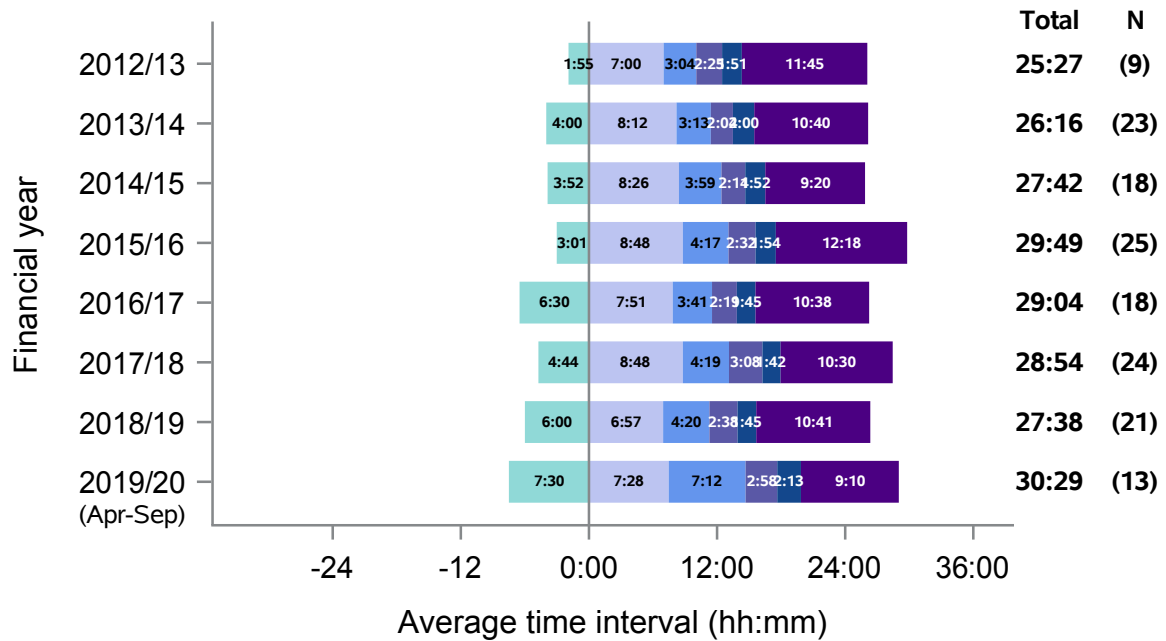
Northern

Figure 16 - Median times of DBD organ donation process, Northern, 1 April 2012 - 30 September 2019



Northern

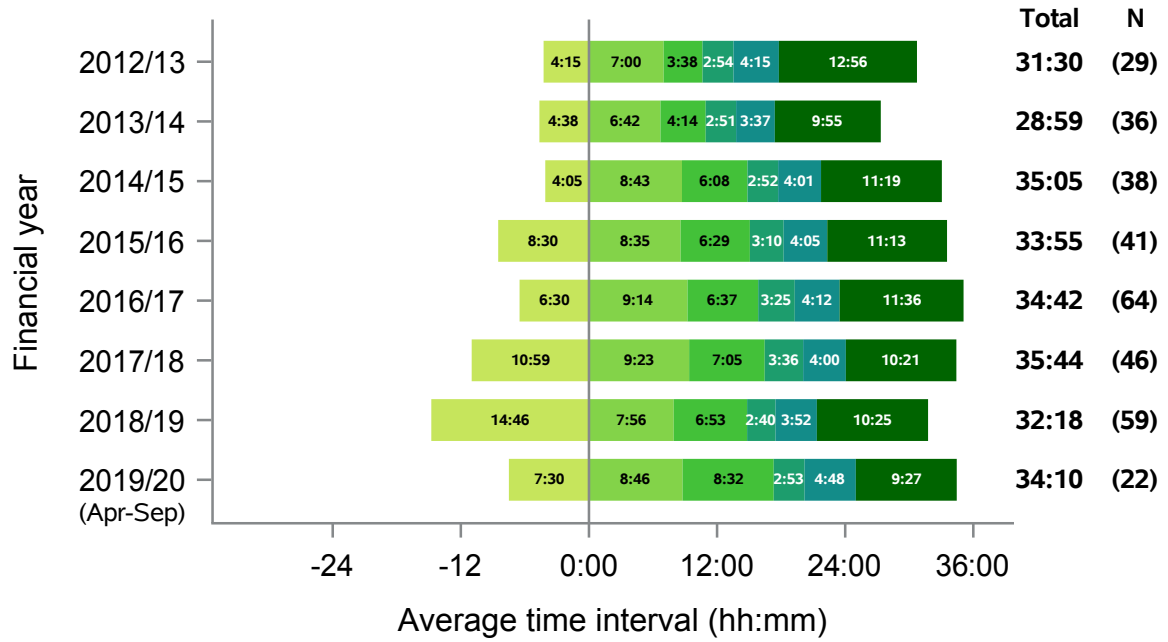
Figure 17 - Median times of DCD organ donation process, Northern, 1 April 2012 - 30 September 2019



- Median time from:**
- Referral to approach
 - Approach to first kidney matching run
 - First kidney matching run to first NORS team departure
 - NORS team departure from base to retrieval operation start
 - Retrieval operation start to operation end
 - Retrieval operation end to kidney perfusion with recipient blood

Scotland

Figure 18 - Median times of DBD organ donation process, Scotland, 1 April 2012 - 30 September 2019

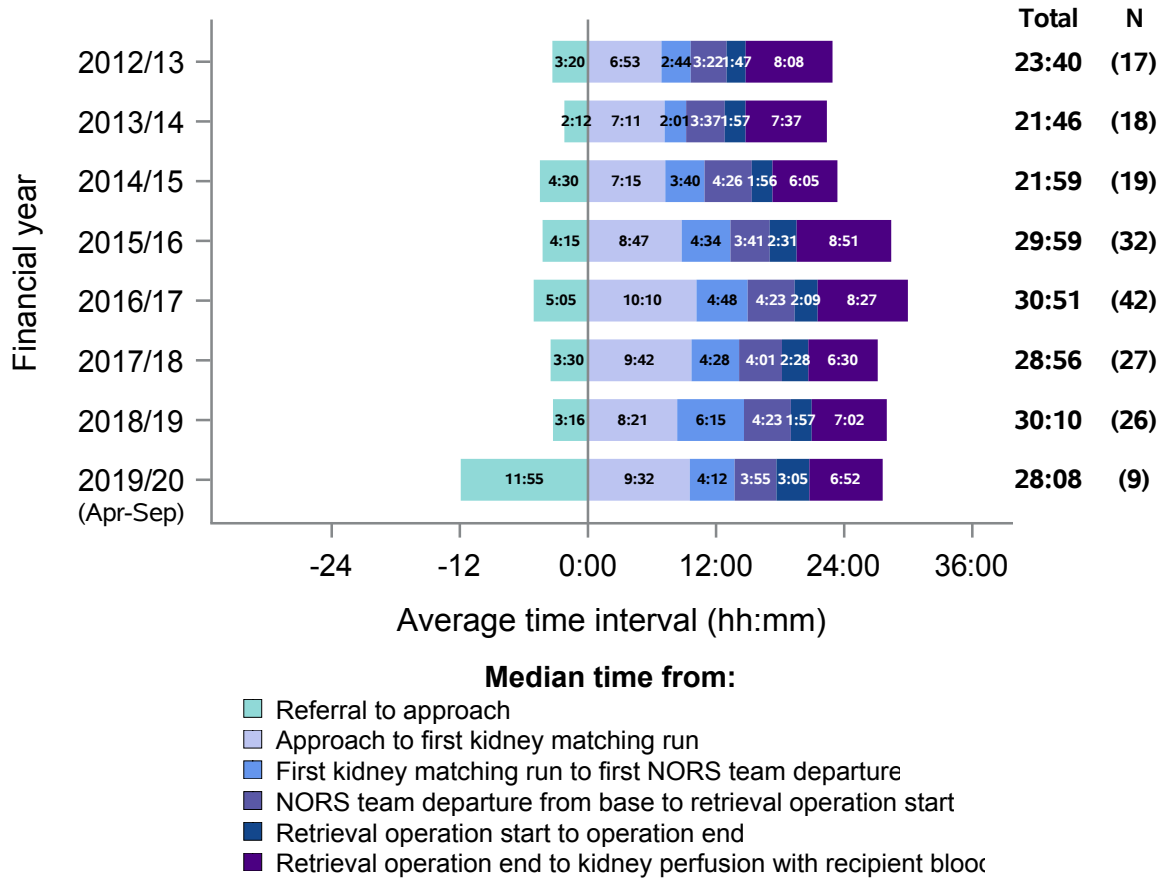


Median time from:

- Referral to approach
- Approach to first kidney matching run
- First kidney matching run to first NORS team departure
- NORS team departure from base to retrieval operation start
- Retrieval operation start to operation end
- Retrieval operation end to kidney perfusion with recipient blood

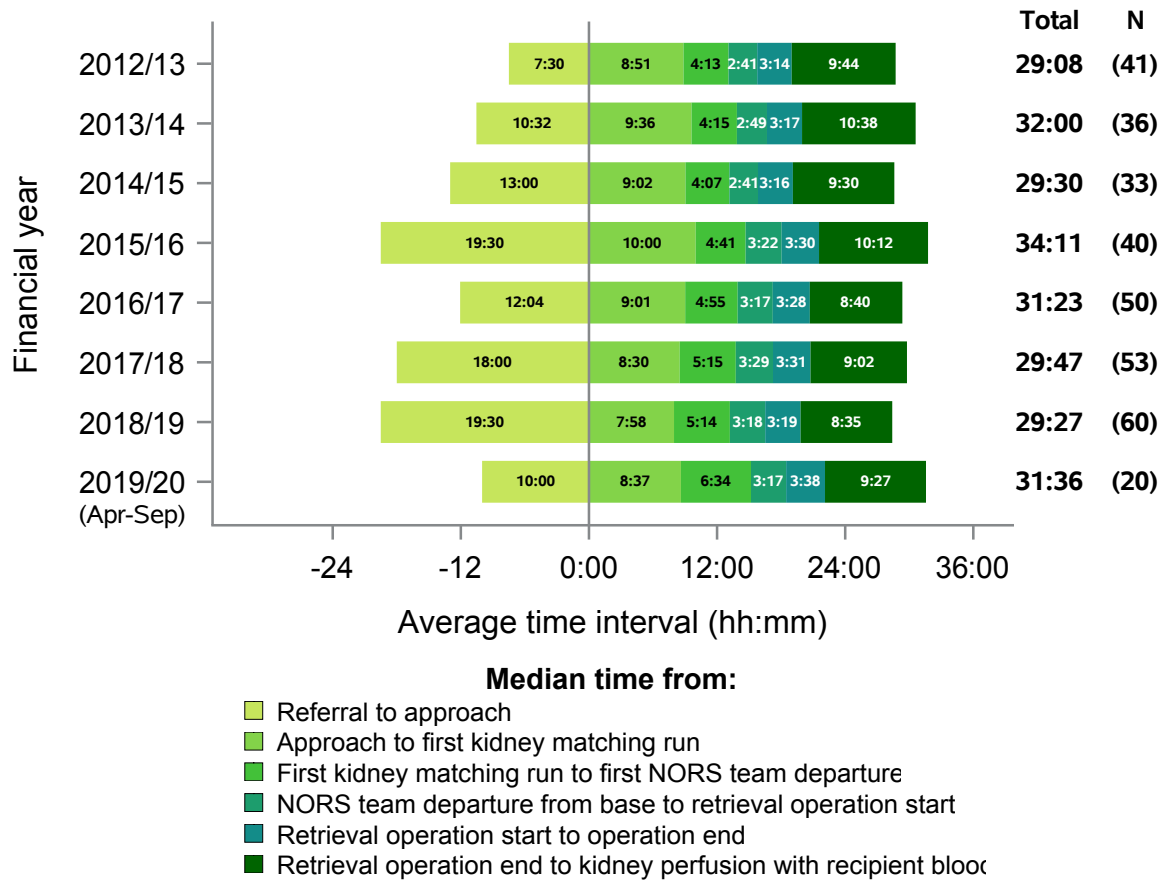
Scotland

Figure 19 - Median times of DCD organ donation process, Scotland, 1 April 2012 - 30 September 2019



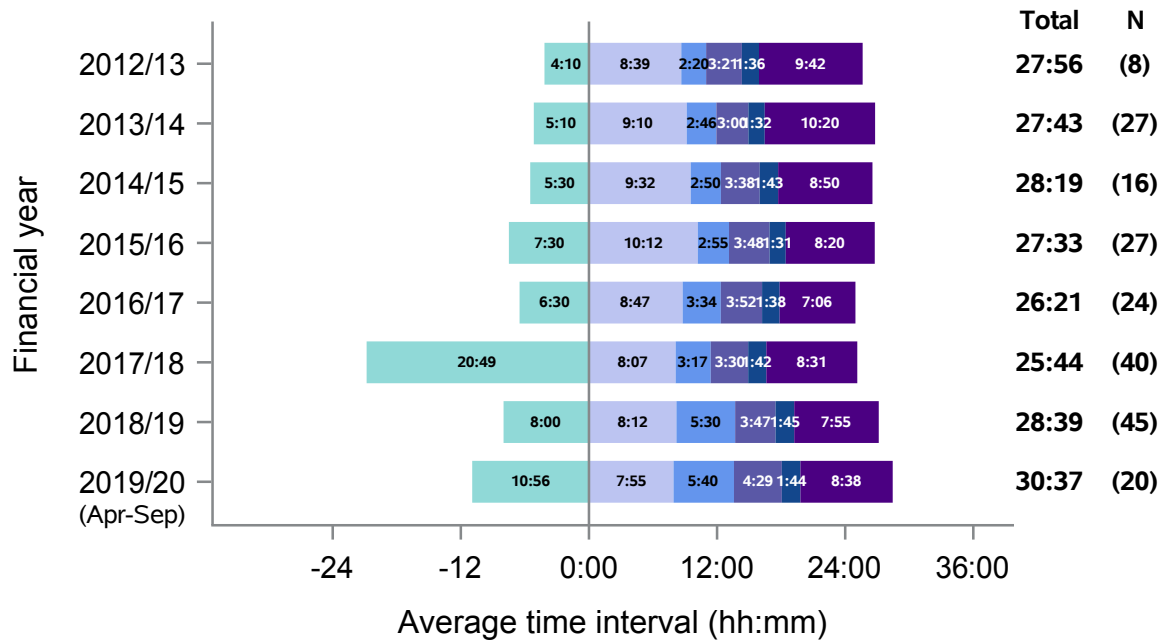
South Central

Figure 20 - Median times of DBD organ donation process, South Central, 1 April 2012 - 30 September 2019



South Central

Figure 21 - Median times of DCD organ donation process, South Central, 1 April 2012 - 30 September 2019

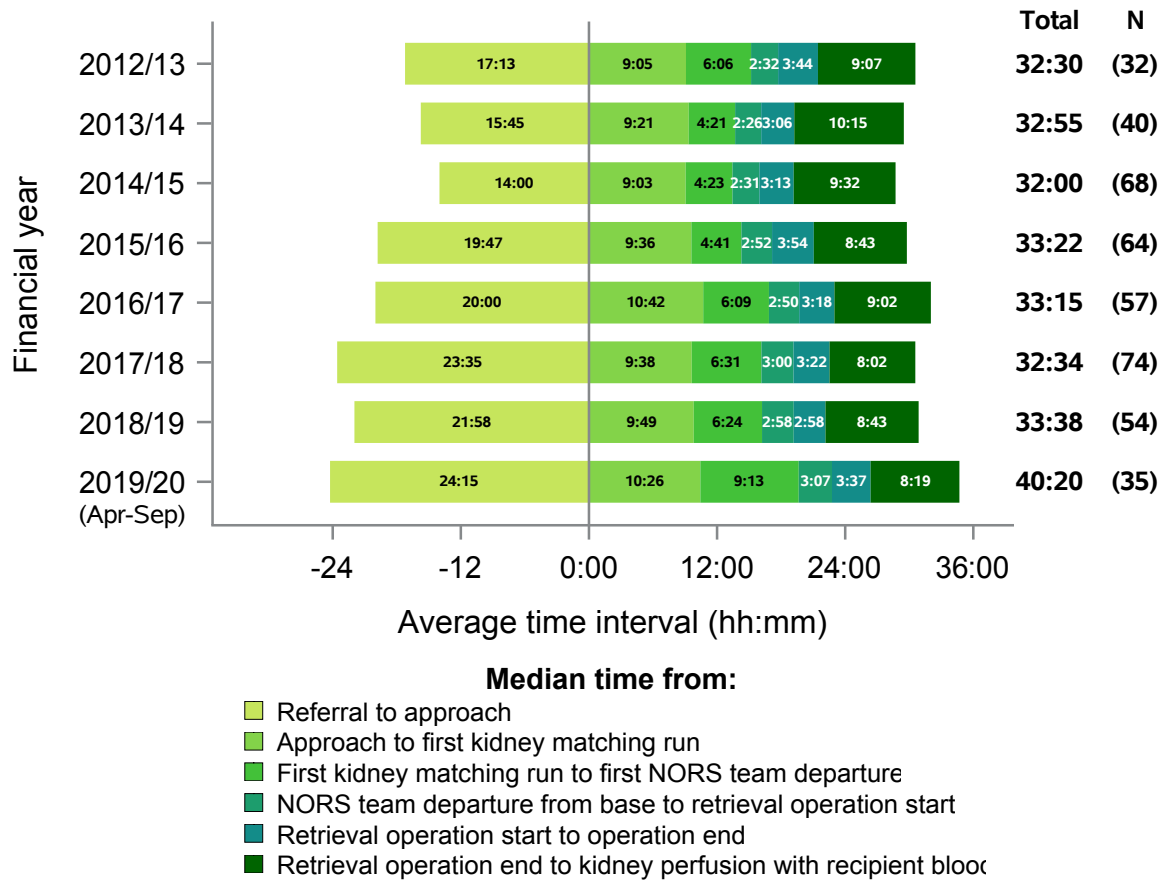


Median time from:

- Referral to approach
- Approach to first kidney matching run
- First kidney matching run to first NORS team departure
- NORS team departure from base to retrieval operation start
- Retrieval operation start to operation end
- Retrieval operation end to kidney perfusion with recipient blood

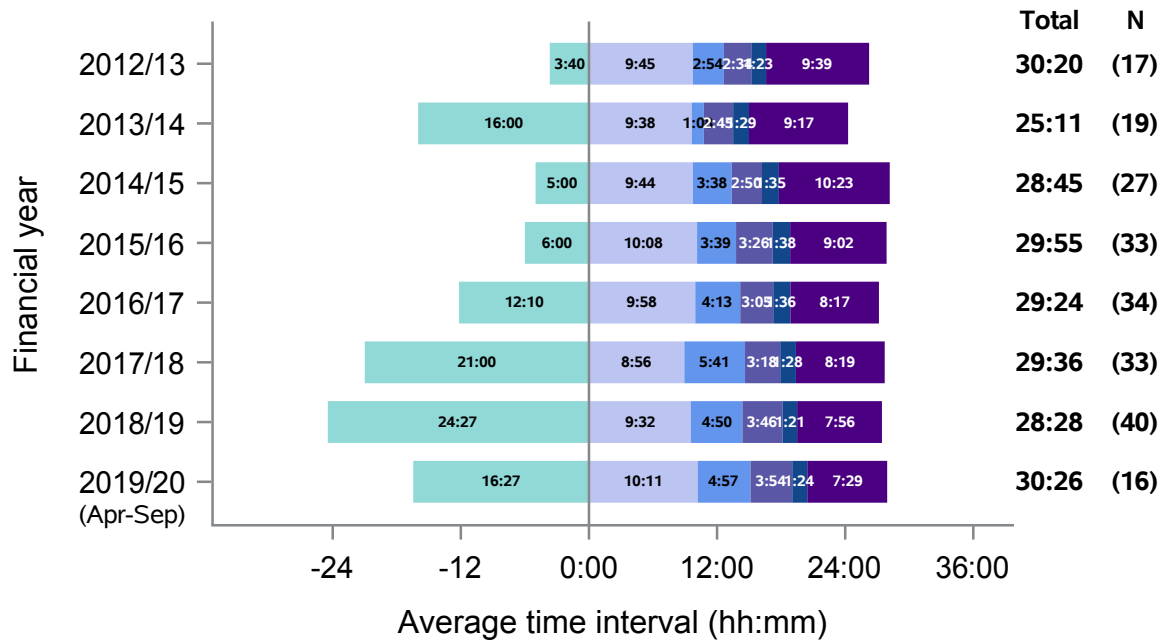
South East

Figure 22 - Median times of DBD organ donation process, South East, 1 April 2012 - 30 September 2019



South East

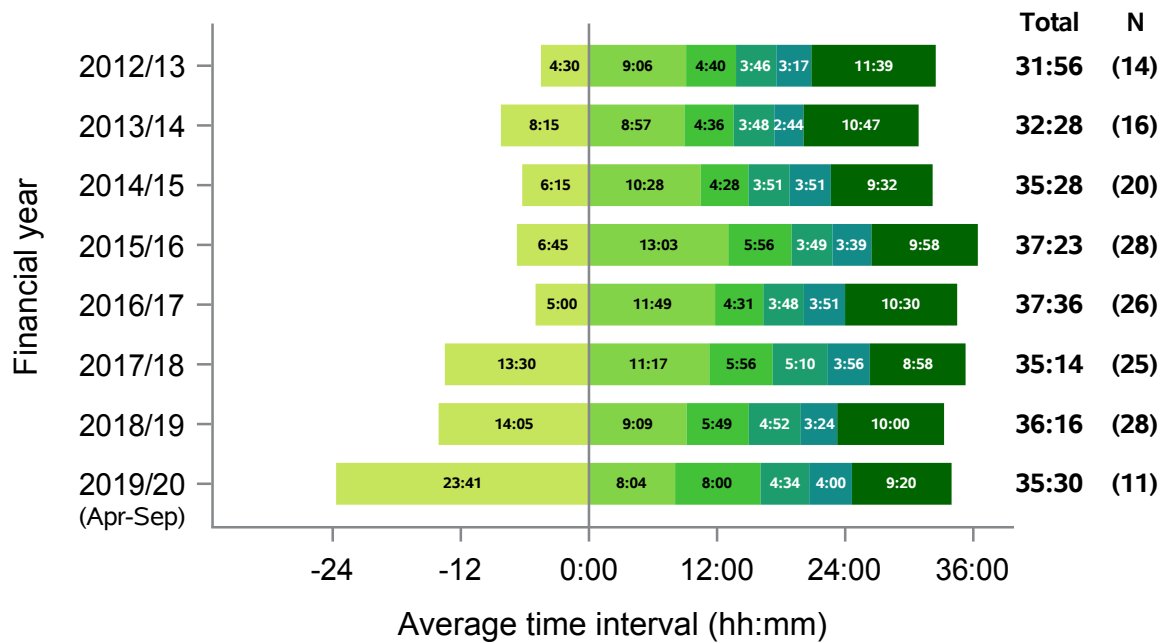
Figure 23 - Median times of DCD organ donation process, South East, 1 April 2012 - 30 September 2019



- Median time from:**
- Referral to approach
 - Approach to first kidney matching run
 - First kidney matching run to first NORS team departure
 - NORS team departure from base to retrieval operation start
 - Retrieval operation start to operation end
 - Retrieval operation end to kidney perfusion with recipient blood

South Wales

Figure 24 - Median times of DBD organ donation process, South Wales, 1 April 2012 - 30 September 2019

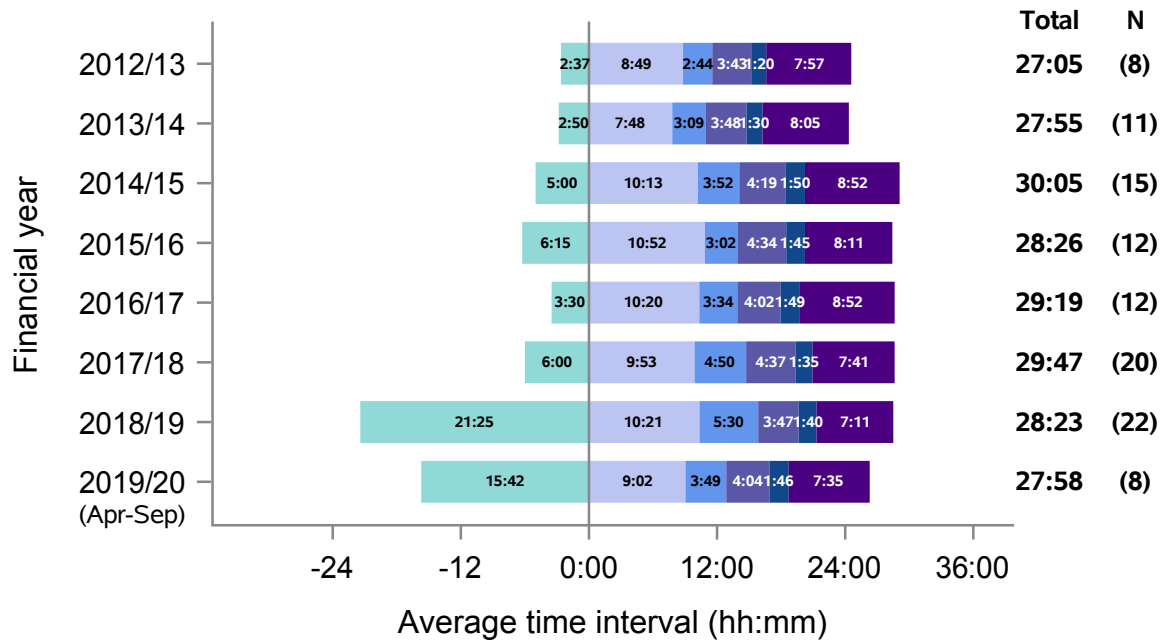


Median time from:

- Referral to approach
- Approach to first kidney matching run
- First kidney matching run to first NORS team departure
- NORS team departure from base to retrieval operation start
- Retrieval operation start to operation end
- Retrieval operation end to kidney perfusion with recipient blood

South Wales

Figure 25 - Median times of DCD organ donation process, South Wales, 1 April 2012 - 30 September 2019

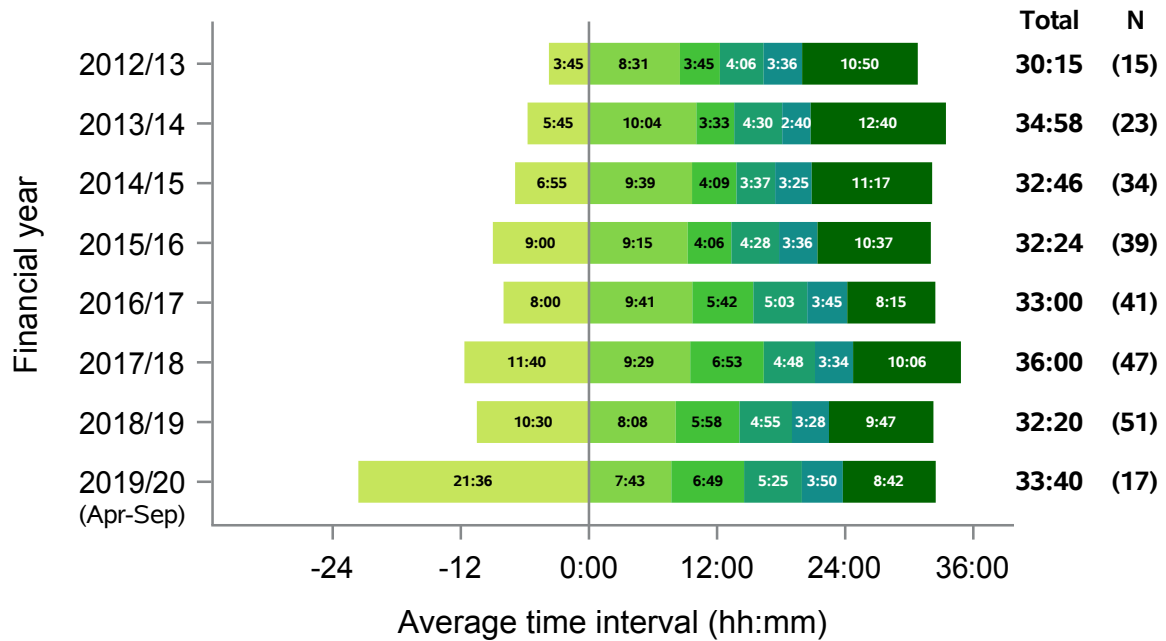


Median time from:

- Referral to approach
- Approach to first kidney matching run
- First kidney matching run to first NORS team departure
- NORS team departure from base to retrieval operation start
- Retrieval operation start to operation end
- Retrieval operation end to kidney perfusion with recipient blood

South West

Figure 26 - Median times of DBD organ donation process, South West, 1 April 2012 - 30 September 2019

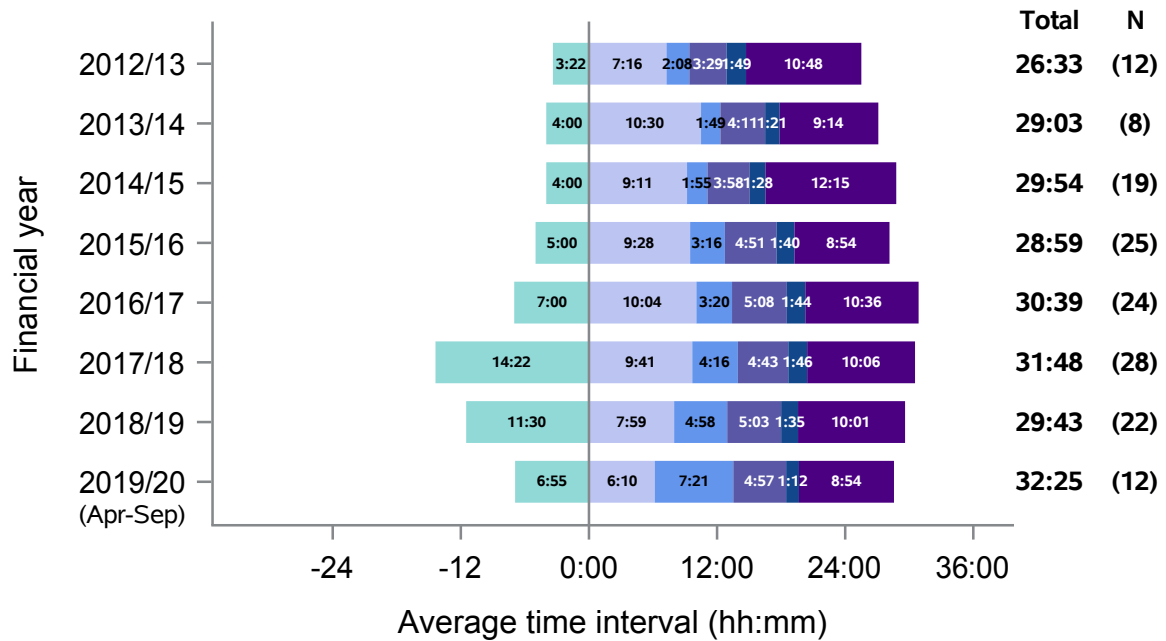


Median time from:

- Referral to approach
- Approach to first kidney matching run
- First kidney matching run to first NORS team departure
- NORS team departure from base to retrieval operation start
- Retrieval operation start to operation end
- Retrieval operation end to kidney perfusion with recipient blood

South West

Figure 27 - Median times of DCD organ donation process, South West, 1 April 2012 - 30 September 2019

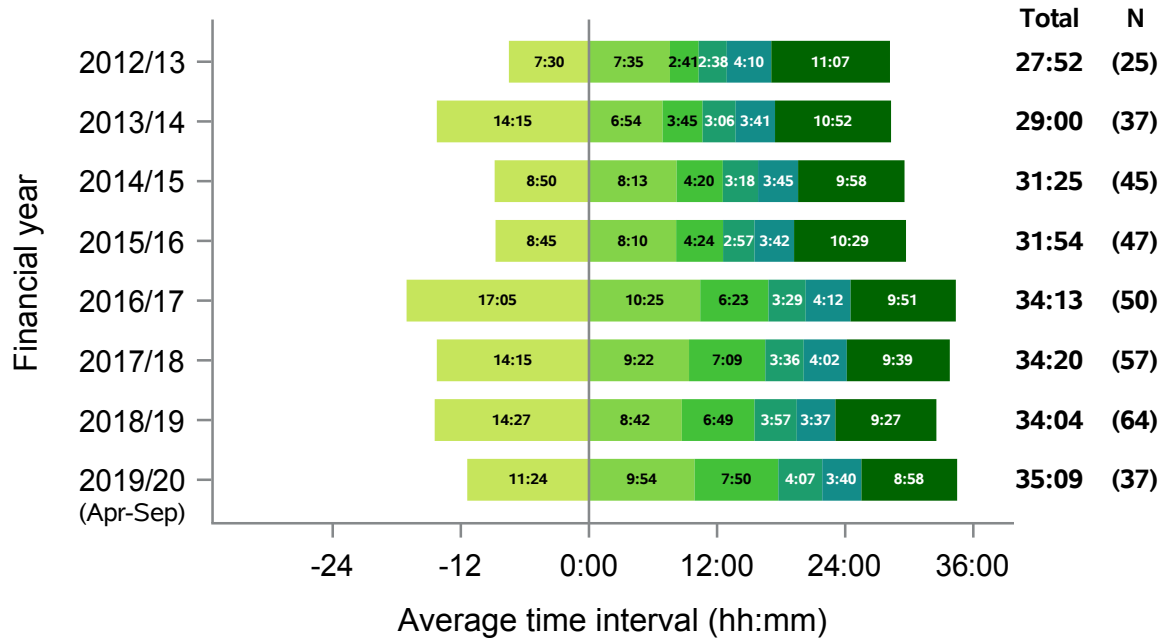


Median time from:

- Referral to approach
- Approach to first kidney matching run
- First kidney matching run to first NORS team departure
- NORS team departure from base to retrieval operation start
- Retrieval operation start to operation end
- Retrieval operation end to kidney perfusion with recipient blood

Yorkshire

Figure 28 - Median times of DBD organ donation process, Yorkshire, 1 April 2012 - 30 September 2019

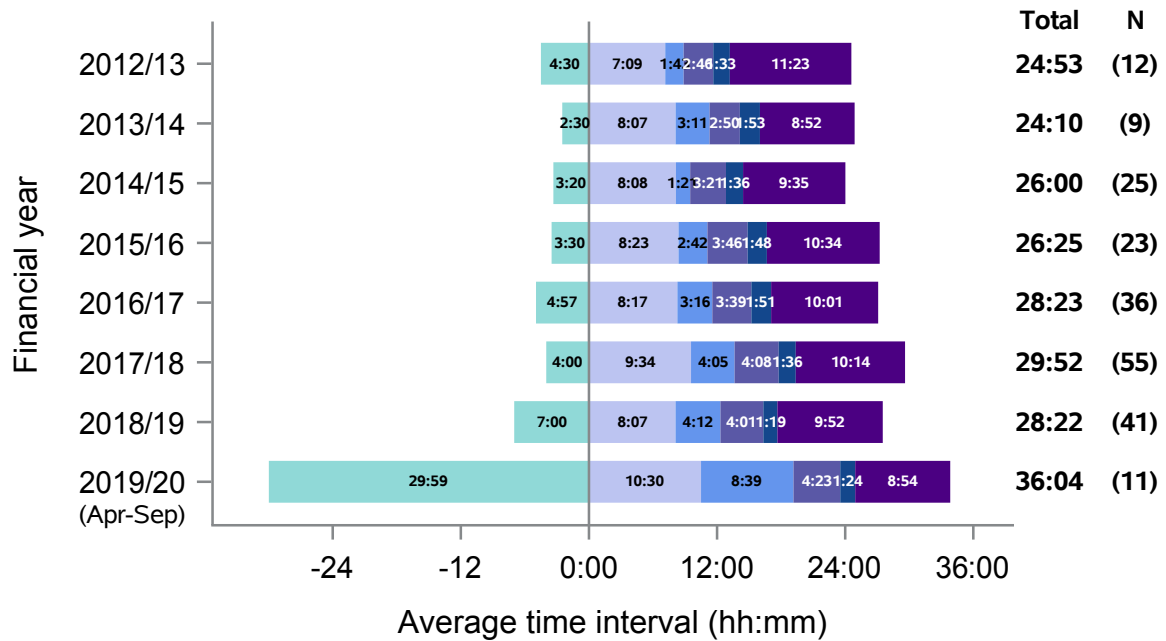


Median time from:

- Referral to approach
- Approach to first kidney matching run
- First kidney matching run to first NORS team departure
- NORS team departure from base to retrieval operation start
- Retrieval operation start to operation end
- Retrieval operation end to kidney perfusion with recipient blood

Yorkshire

Figure 29 - Median times of DCD organ donation process, Yorkshire, 1 April 2012 - 30 September 2019



Median time from:

- Referral to approach
- Approach to first kidney matching run
- First kidney matching run to first NORS team departure
- NORS team departure from base to retrieval operation start
- Retrieval operation start to operation end
- Retrieval operation end to kidney perfusion with recipient blood

Table 3 Summary of Organ Donation Services Teams median timings, DBD, 2019/20 (Apr-Sep)

Team name	Referral to approach	Approach to first kidney matching run	First kidney matching run to first NORS team departure	NORS team departure from base to retrieval operation start	Retrieval operation start to operation end	Retrieval operation end to kidney perfusion with recipient blood
Eastern	10:27	10:35	6:59	3:27	4:10	9:13
London	27:31	10:28	9:57	2:42	2:59	8:12
Midlands	18:31	11:42	7:27	3:33	3:57	8:41
Northern	13:30	7:08	6:54	2:39	3:44	8:07
Northern Ireland	25:57	11:09	7:24	5:04	3:06	14:09
North West	18:26	8:51	5:53	4:03	3:40	9:07
Scotland	7:30	8:46	8:32	2:53	4:48	9:27
South Central	10:00	8:37	6:34	3:17	3:38	9:27
South East	24:15	10:26	9:13	3:07	3:37	8:19
South Wales	23:41	8:04	8:00	4:34	4:00	9:20
South West	21:36	7:43	6:49	5:25	3:50	8:42
Yorkshire	11:24	9:54	7:50	4:07	3:40	8:58

Table 4 Summary of Organ Donation Services Teams median timings, DCD, 2019/20 (Apr-Sep)

Team name	Referral to approach	Approach to first kidney matching run	First kidney matching run to first NORS team departure	NORS team departure from base to operation start	Operation start to operation end	Operation end to kidney perfusion with recipient's blood
Eastern	22:21	12:11	5:02	3:24	1:52	8:51
London	15:47	11:28	7:38	2:54	1:18	7:07
Midlands	14:28	11:57	4:34	4:14	1:42	6:58
Northern	7:30	7:28	7:12	2:58	2:13	9:10
Northern Ireland	38:07	10:51	4:56	5:17	1:33	6:47
North West	22:00	8:53	4:40	4:29	1:46	9:16
Scotland	11:55	9:32	4:12	3:55	3:05	6:52
South Central	10:56	7:55	5:40	4:29	1:44	8:38
South East	16:27	10:11	4:57	3:54	1:24	7:29
South Wales	15:42	9:02	3:49	4:04	1:46	7:35
South West	6:55	6:10	7:21	4:57	1:12	8:54
Yorkshire	29:59	10:30	8:39	4:23	1:24	8:54