



# BSMS 2019 Roadshow

Thursday 24<sup>th</sup> October 2019  
The Source Academy - Sheffield

**Mike Herbert (Blood Transfusion Lead)**

*“Should emergency red cells be anything other than just Group O?”*



# BSMS 2019 Roadshow

Thursday 24<sup>th</sup> October 2019  
The Source Academy - Sheffield

## Should All Emergency Red Cells be Group O Rh (D) Negative as a minimum?

**Vote**

**Red for Yes**

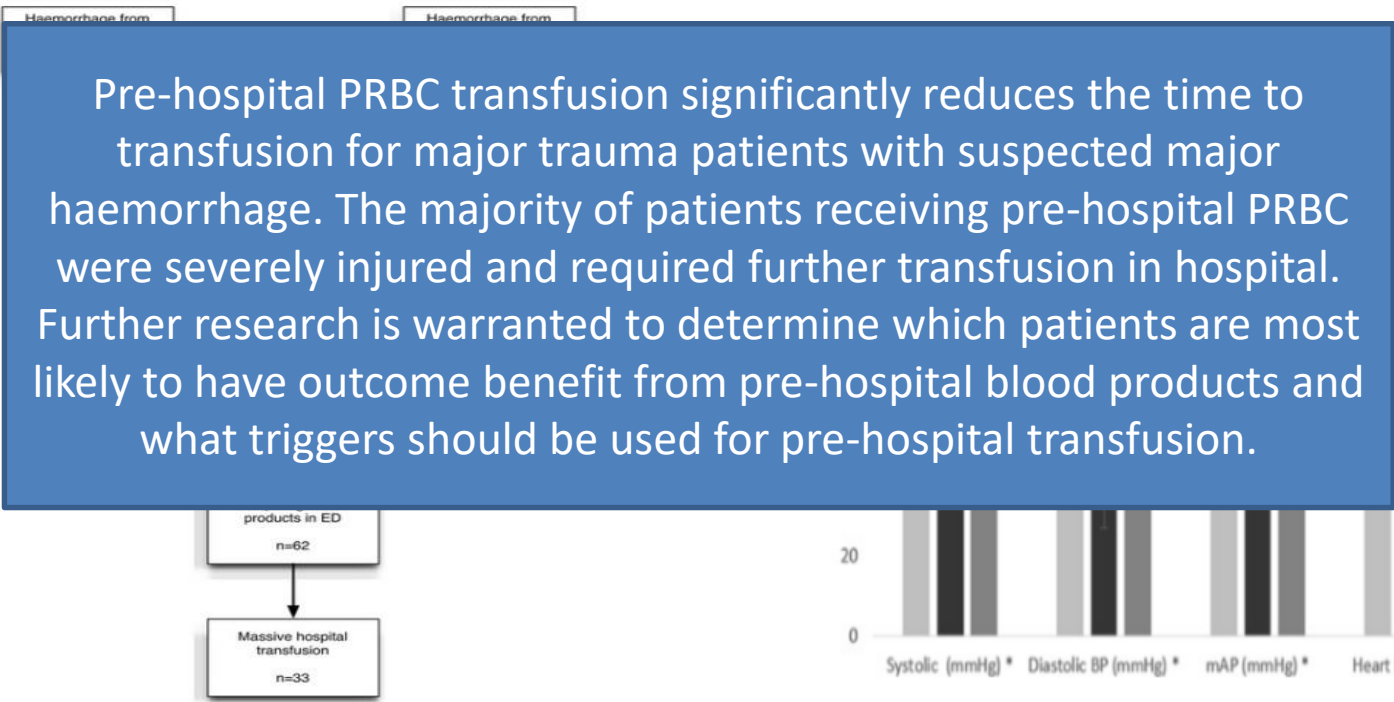
**Blue for No**

**Green for Not Sure**

*Scand J Trauma Resusc Emerg Med.* 2017 Feb 14;25(1):12. doi: 10.1186/s13049-017-0356-2.

## Pre-hospital transfusion of packed red blood cells in 147 patients from a UK helicopter emergency medical service.

Lyon RM<sup>1,2</sup>, de Saumarez E<sup>3</sup>, McWhirter E<sup>3,4</sup>, Wareham G<sup>3</sup>, Nelson M<sup>3</sup>, Matthies A<sup>5</sup>, Hudson A<sup>5</sup>, Curtis L<sup>3</sup>, Russell MQ<sup>3</sup>; Kent, Surrey & Sussex Air Ambulance Trust.





pre-Hospital

01.04.2016

Resuscitation

## One year on: Roadside blood transfusions are saving lives across the region

Roadside blood transfusions have helped to save 18 lives in the North East and Cumbria since being introduced just over a year ago, according to those behind the service.

Air medics from the Great North Air Ambulance Service (GNAAS) have performed 60 blood transfusions since the Blood on Board project launched last year.

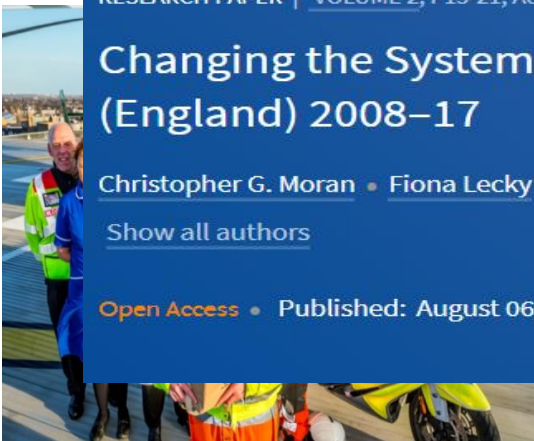
RESEARCH PAPER | VOLUME 2, P13-21, AUGUST 01, 2018

## Changing the System - Major Trauma Patients and Their Outcomes in the NHS (England) 2008–17

Christopher G. Moran • Fiona Lecky • Omar Bouamra • Tom Lawrence • Antoinette Edwards • Maralyn Woodford • et al.

[Show all authors](#)

Open Access • Published: August 06, 2018 • DOI: <https://doi.org/10.1016/j.eclinm.2018.07.001>



as serious falls, incidents involving crushing and assaults



[Transfusion](#), 2007 Dec;47(12):2197-201. Epub 2007 Aug 21.

### **Detection of anti-D in D- recipients transfused with D+ red blood cells.**

[Yazer MH](#)<sup>1</sup>, [Triulzi DJ](#).

#### **Author information**

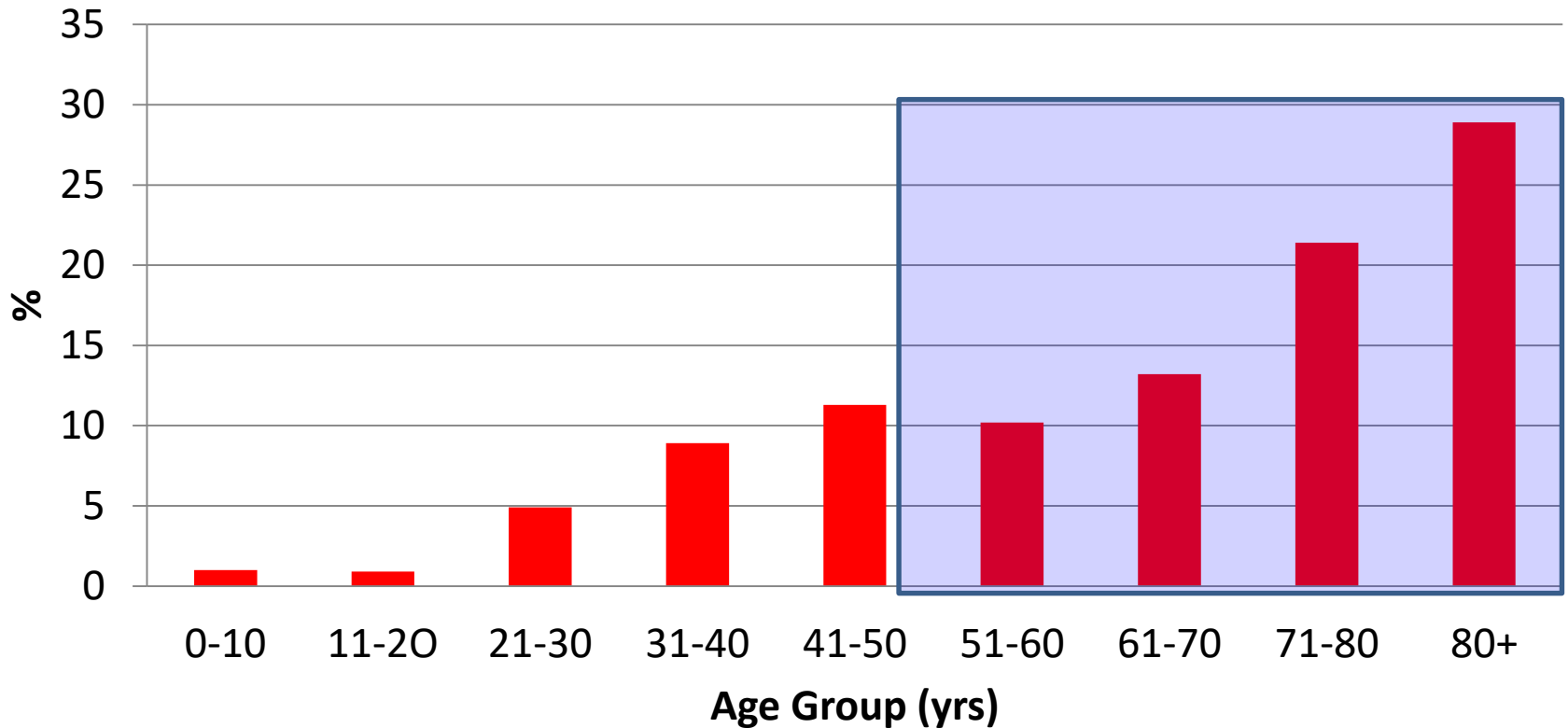
- 1 The Institute for Transfusion Medicine and Department of Pathology, University of Pittsburgh, Pittsburgh, Pennsylvania, USA.  
[myazer@itxm.org](mailto:myazer@itxm.org)

[Transfusion](#), 2008 Jul;48(7):1318-24. doi: 10.1111/j.1537-2995.2008.01700.x. Epub 2008 Apr 17.

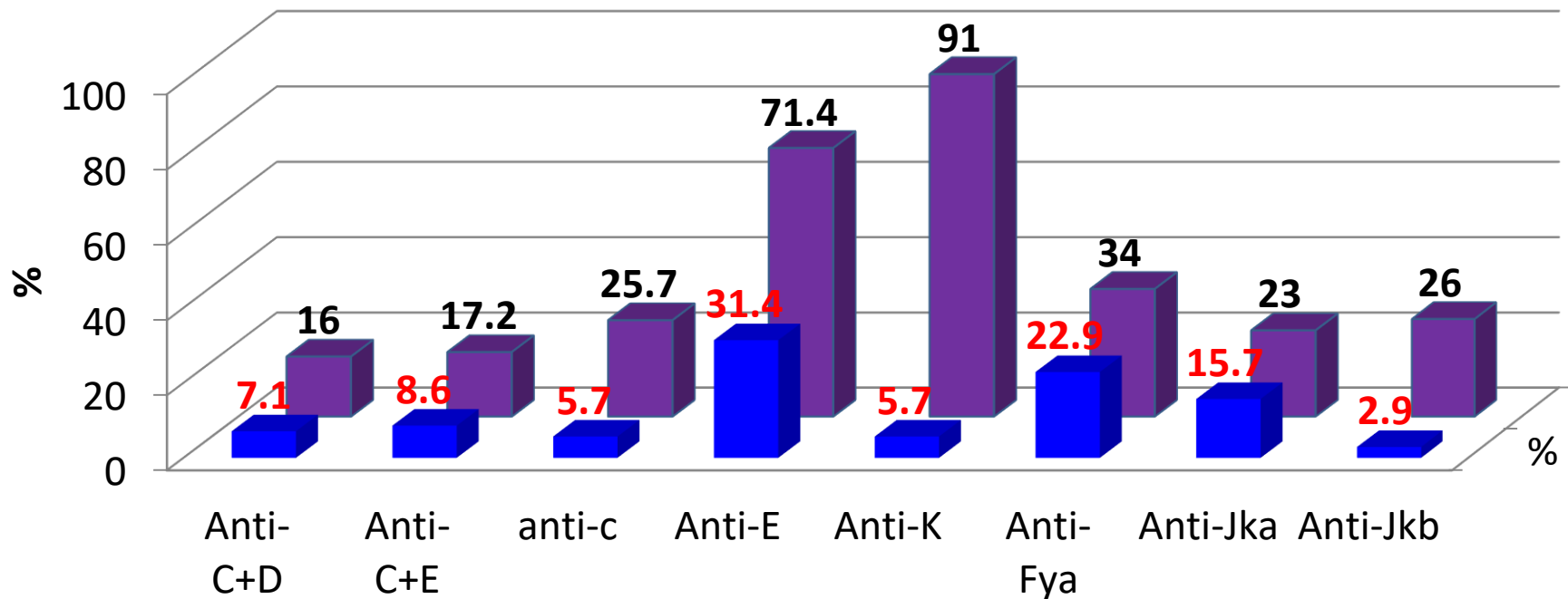
### **Prospective evaluation of a transfusion policy of D+ red blood cells into D- patients.**

[Gonzalez-Porras JR](#)<sup>1</sup>, [Graciani IF](#), [Perez-Simon JA](#), [Martin-Sanchez J](#), [Encinas C](#), [Conde MP](#), [Nieto MJ](#), [Corral M](#).

**1275 transfusion episodes in Emergency Department - 12 months**

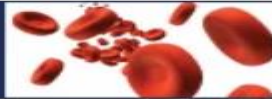


## Antibody Specificity



**TRANSFUSION  
MEDICINE**

Official Journal of the British Blood Transfusion Society



British Blood  
Transfusion Society

GUIDELINES |  Free Access

## Guidelines for pre-transfusion compatibility procedures in blood transfusion laboratories†

British Committee for Standards in Haematology, C. Milkins, J. Berryman, C. Cantwell, C. Elliott, R. Haggas, J. Jones, M. Rowley, M. Williams, N. Win

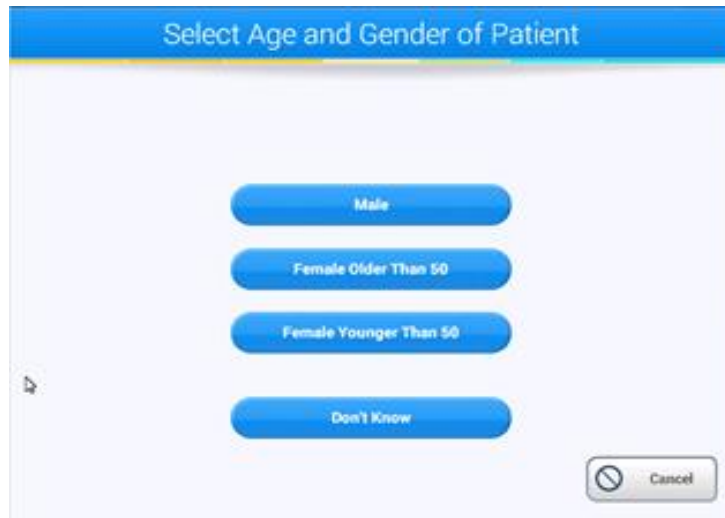
- 8.6.2. Group O red cells should be used in emergency situations where the ABO group has not yet been established.
- 8.6.3. For large volume blood replacement (e.g. more than 8 units of red cells), D positive red cells should be issued to females over the age of 50 and adult males in whom no anti-D is detectable, thus preserving stocks of O D negative red cells for women of child bearing potential. (NBTC, 2009).
- 8.6.4. The following should be covered by a concessionary release procedure (an example is shown in Appendix APPENDIX 9):
- i. Use of D positive blood for a D negative patient who would normally be excluded from receiving D positive units.



**Guidelines for the specification, implementation and management of information technology (IT) systems in hospital transfusion laboratories**

**Date for guideline review**

June 2017



There should be an alarmed electronic override feature as this is essential for use in emergencies i.e. release of emergency group O blood. All events should be logged and investigated retrospectively.

# A practical guideline for the haematological management of major haemorrhage

Beverley J. Hunt , Shubha Allard, David Keeling, Derek Norfolk, Simon J. Stanworth, Kate Pendry, on behalf of the British Committee for Standards in Haematology

First published: 06 July 2015 | <https://doi.org/10.1111/bjh.13580> | Cited by: 90

## Recommendation

**Hospitals must have a strategy to ensure that red cells are readily available for life-threatening bleeding, through the use of emergency Group O red cells and also through the rapid provision of group-specific red cells by the transfusion laboratory (IC).**



# BSMS 2019 Roadshow

Thursday 24<sup>th</sup> October 2019  
The Source Academy - Sheffield

## Should All Emergency Red Cells be Group O Rh (D) Negative as a minimum?

**Vote**

**Red for Yes**

**Blue for No**

**Green for Not Sure**



# You Decide

