

**Length of the deceased organ donation and
transplantation process**

Six-monthly report

1 April 2012 - 31 March 2019

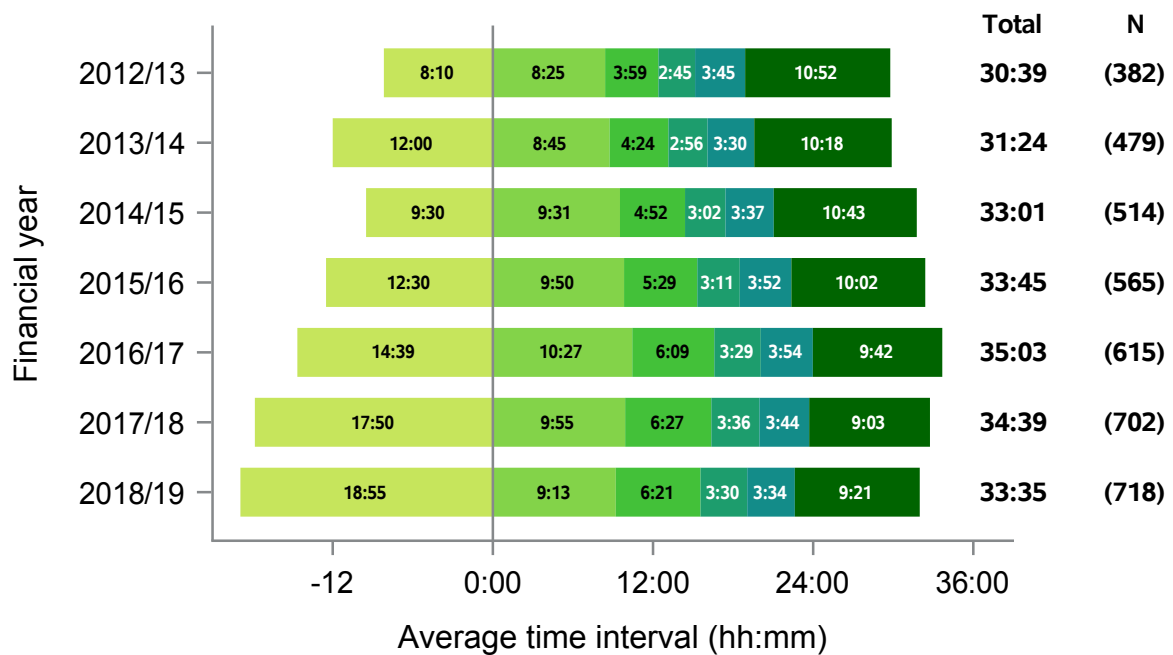
Produced 9 May 2019

Statistics and Clinical Studies



Summary of UK activity

Figure 1 - Median times of DBD organ donation process, UK, 1 April 2012 - 31 March 2019



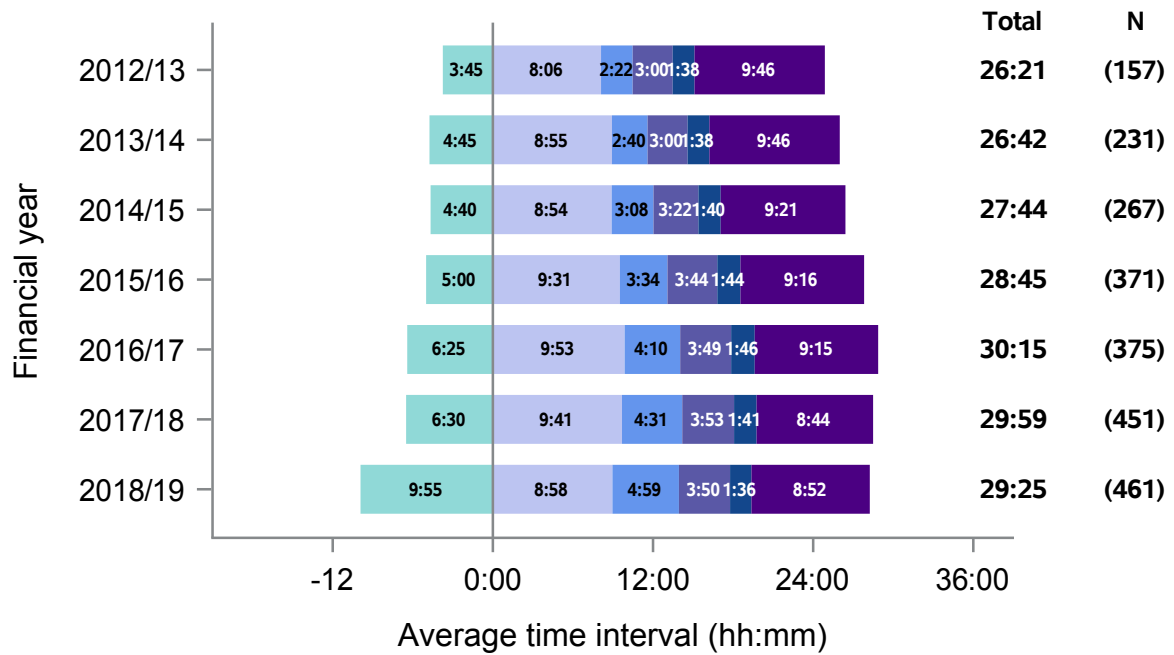
- Median time from:**
- Referral to approach
 - Approach to first kidney matching run
 - First kidney matching run to first NORS team departure
 - NORS team departure from base to retrieval operation start
 - Retrieval operation start to operation end
 - Retrieval operation end to kidney perfusion with recipient blood

Time segment	Group with oversight responsibility
Referral to approach	National Organ Donation Committee
Approach to first kidney matching run	National Organ Donation Committee
First kidney matching run to first NORS team departure	ODT Hub
NORS team departure from base to retrieval operation start	Retrieval Advisory Group
Retrieval operation start to operation end	Retrieval Advisory Group
Retrieval operation end to kidney perfusion with recipient blood	Retrieval Advisory Group

It is important to note when interpreting all timings charts:

- To aid interpretation of the process following approach, time from referral to formal approach is presented before 0. This period is also excluded from the total median calculation
- If both a cardiothoracic and abdominal NORS team attend a donor; the earliest departure time is selected, and similarly the earliest retrieval operation start time
- The latest operation end time is selected, to signify the end of all donor surgery
- N values do not correspond to the number of donors each year, this is the number of patients for which all time values were available
- Total medians do not equal the sum of all medians calculated
- All timings charts are presented on the same scale to allow for comparison

Figure 2 - Median times of DCD organ donation process, UK, 1 April 2012 - 31 March 2019



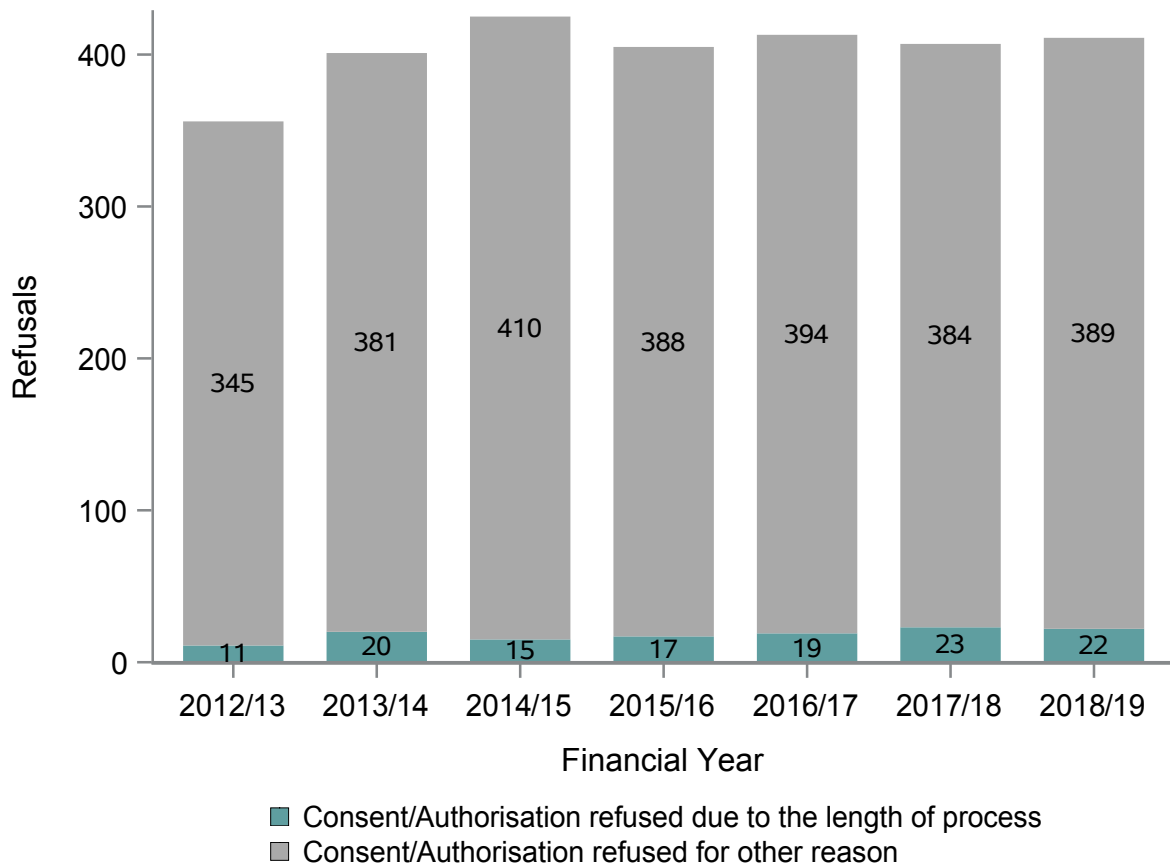
- Median time from:**
- Referral to approach
 - Approach to first kidney matching run
 - First kidney matching run to first NORS team departure
 - NORS team departure from base to retrieval operation start
 - Retrieval operation start to operation end
 - Retrieval operation end to kidney perfusion with recipient blood

Time segment	Group with oversight responsibility
Referral to approach	National Organ Donation Committee
Approach to first kidney matching run	National Organ Donation Committee
First kidney matching run to first NORS team departure	ODT Hub
NORS team departure from base to retrieval operation start	Retrieval Advisory Group
Retrieval operation start to operation end	Retrieval Advisory Group
Retrieval operation end to kidney perfusion with recipient blood	Retrieval Advisory Group

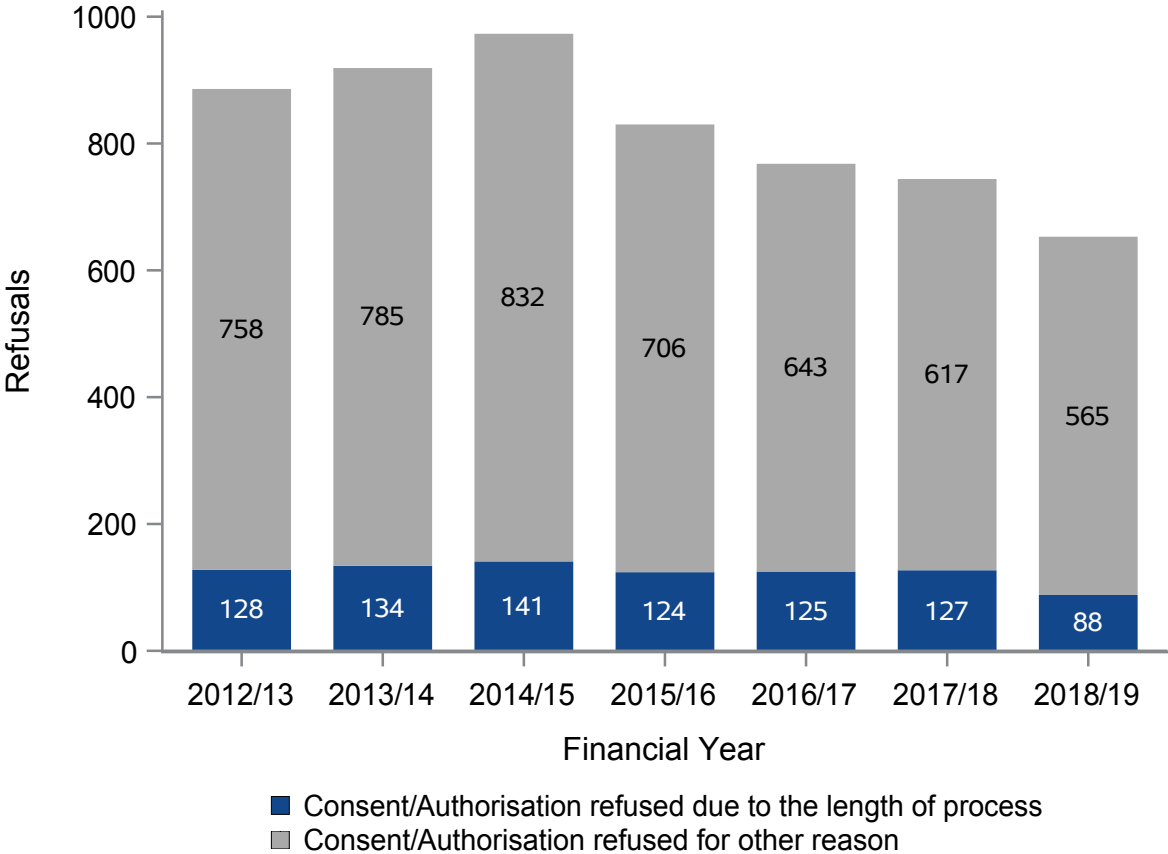
Consent/authorisation not ascertained due to 'family felt the length of time for donation process was too long'

Table 1 Approaches and refusals in 2018/19						
Team name	Eligible DBD Donors			Eligible DCD Donors		
	Organ donation discussions	Organ donation not supported	Not supported due to length of process	Organ donation discussions	Organ donation not supported	Not supported due to length of process
Eastern	143	39	2	197	56	10
London	240	93	1	190	73	8
Midlands	183	54	3	264	106	9
North West	188	55	8	205	81	12
Northern	105	25	1	105	43	8
Northern Ireland	48	17	0	34	13	2
Scotland	105	28	2	123	55	10
South Central	95	14	1	141	53	6
South East	123	35	1	158	57	6
South Wales	56	10	0	77	21	4
South West	79	9	0	106	34	5
Yorkshire	128	32	3	152	61	8

**Figure 3 - Family refusals where organ donation discussion occurred, eligible DBD
1 April 2012 - 31 March 2019**



**Figure 4 - Family refusals where organ donation discussion occurred, eligible DCD
1 April 2012 - 31 March 2019**

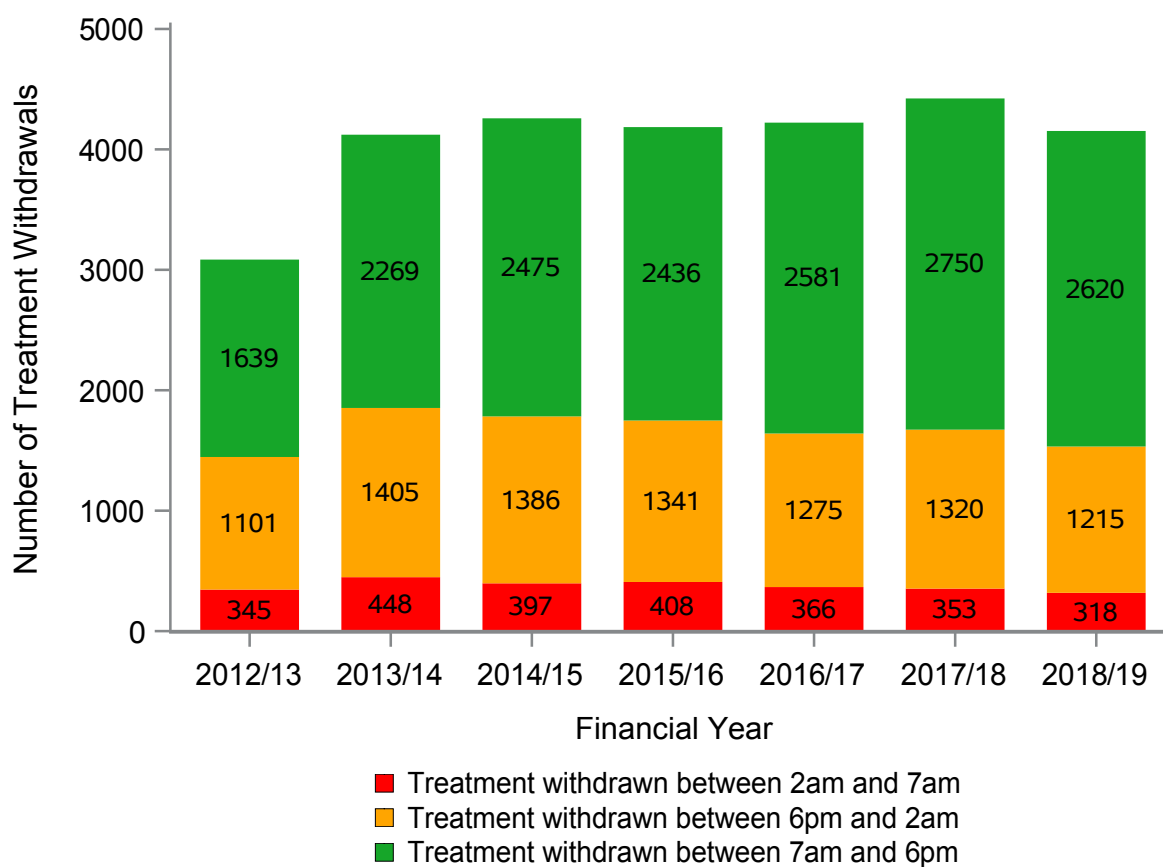


Withdrawal of life sustaining treatment (WLST)

Table 2 WLST timings in 2018/19

Team name	Treatment withdrawn	Treatment withdrawn between 2am and 7am	
		N	%
Eastern	552	40	7
London	400	26	7
Midlands	603	37	6
North West	615	36	6
Northern	265	19	7
Northern Ireland	93	3	3
Scotland	261	22	8
South Central	322	21	7
South East	332	34	10
South Wales	185	14	8
South West	217	25	12
Yorkshire	308	41	13

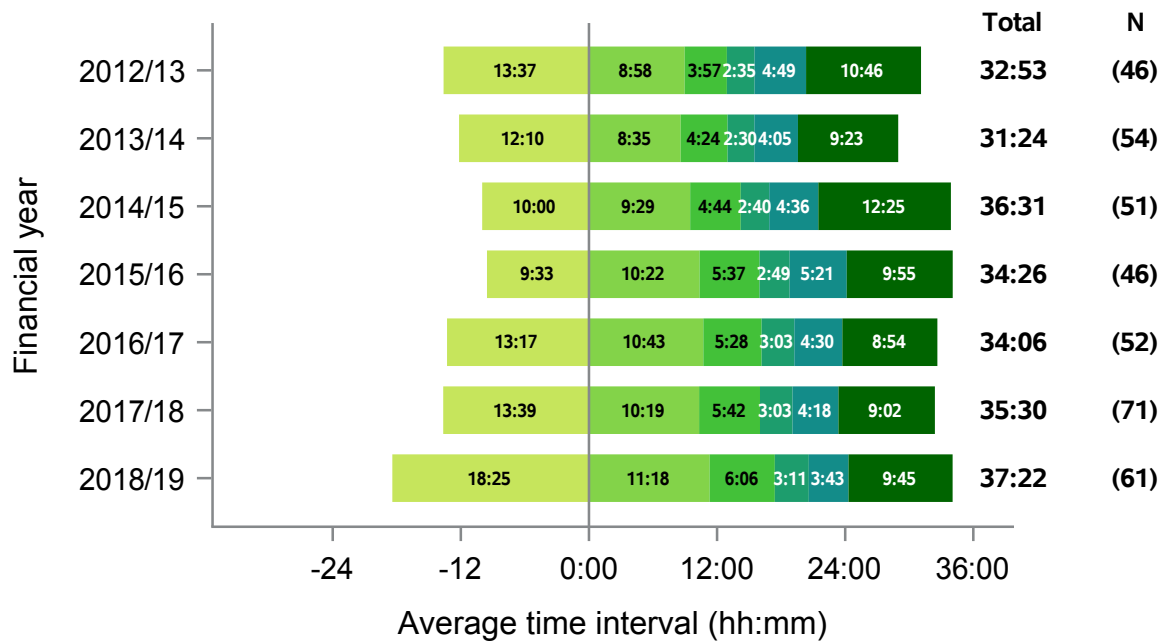
Figure 5 - Timings of WLST, 1 April 2012 - 31 March 2019



Data by Organ Donation Services Team

Eastern

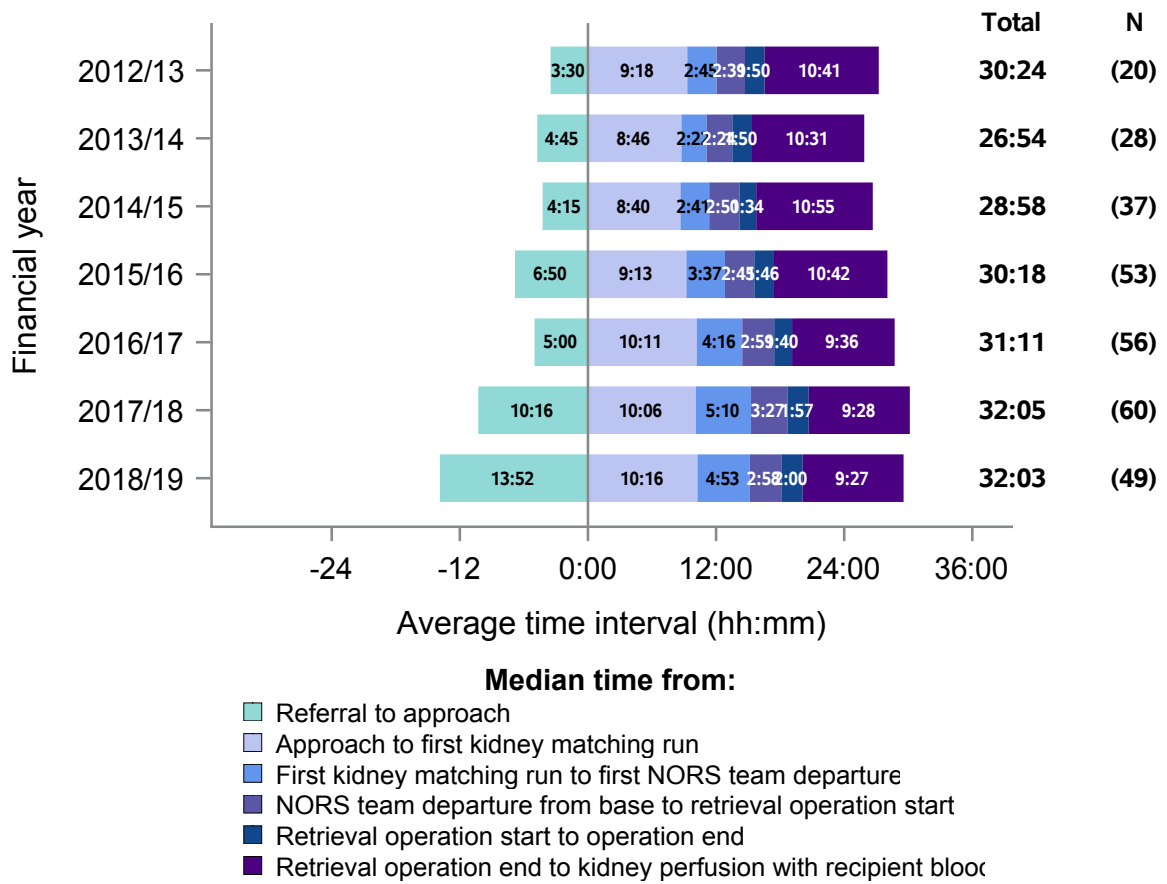
Figure 6 - Median times of DBD organ donation process, Eastern, 1 April 2012 - 31 March 2019



- Median time from:**
- Referral to approach
 - Approach to first kidney matching run
 - First kidney matching run to first NORS team departure
 - NORS team departure from base to retrieval operation start
 - Retrieval operation start to operation end
 - Retrieval operation end to kidney perfusion with recipient blood

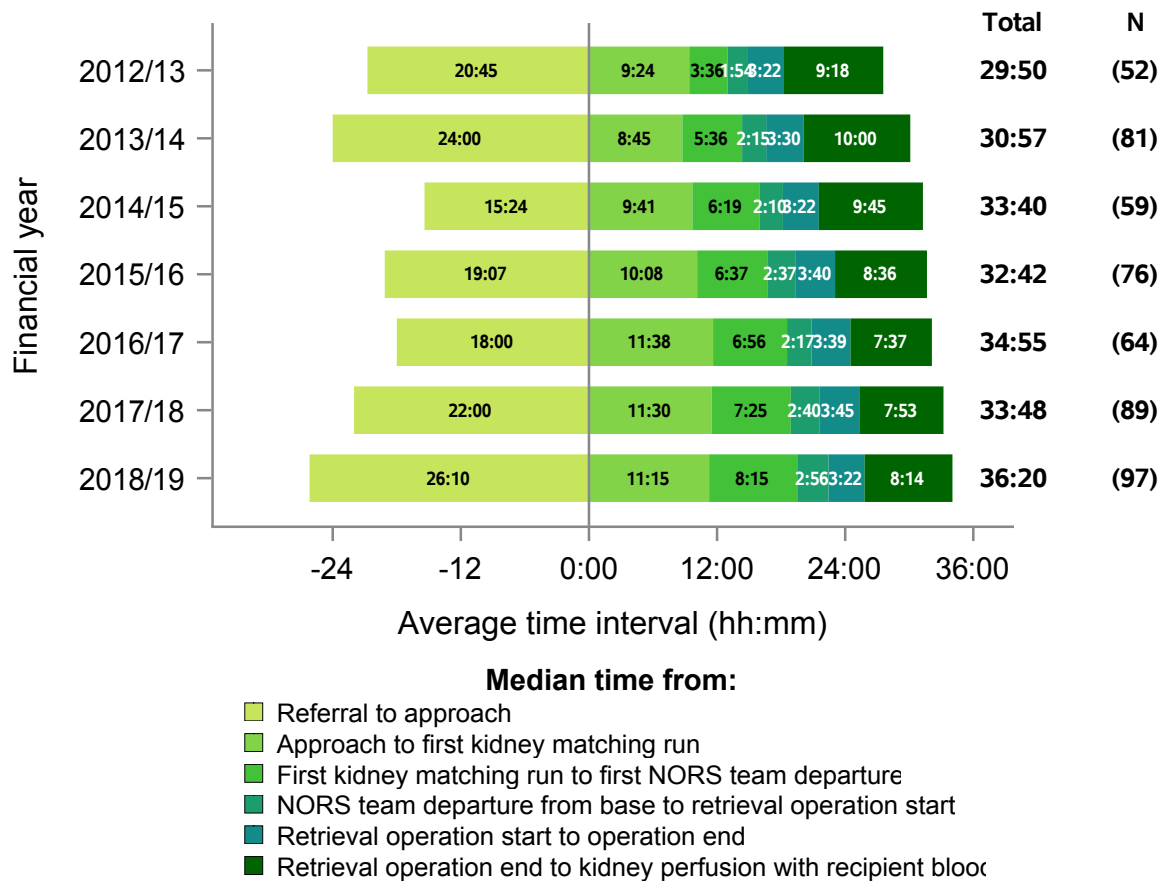
Eastern

Figure 7 - Median times of DCD organ donation process, Eastern, 1 April 2012 - 31 March 2019



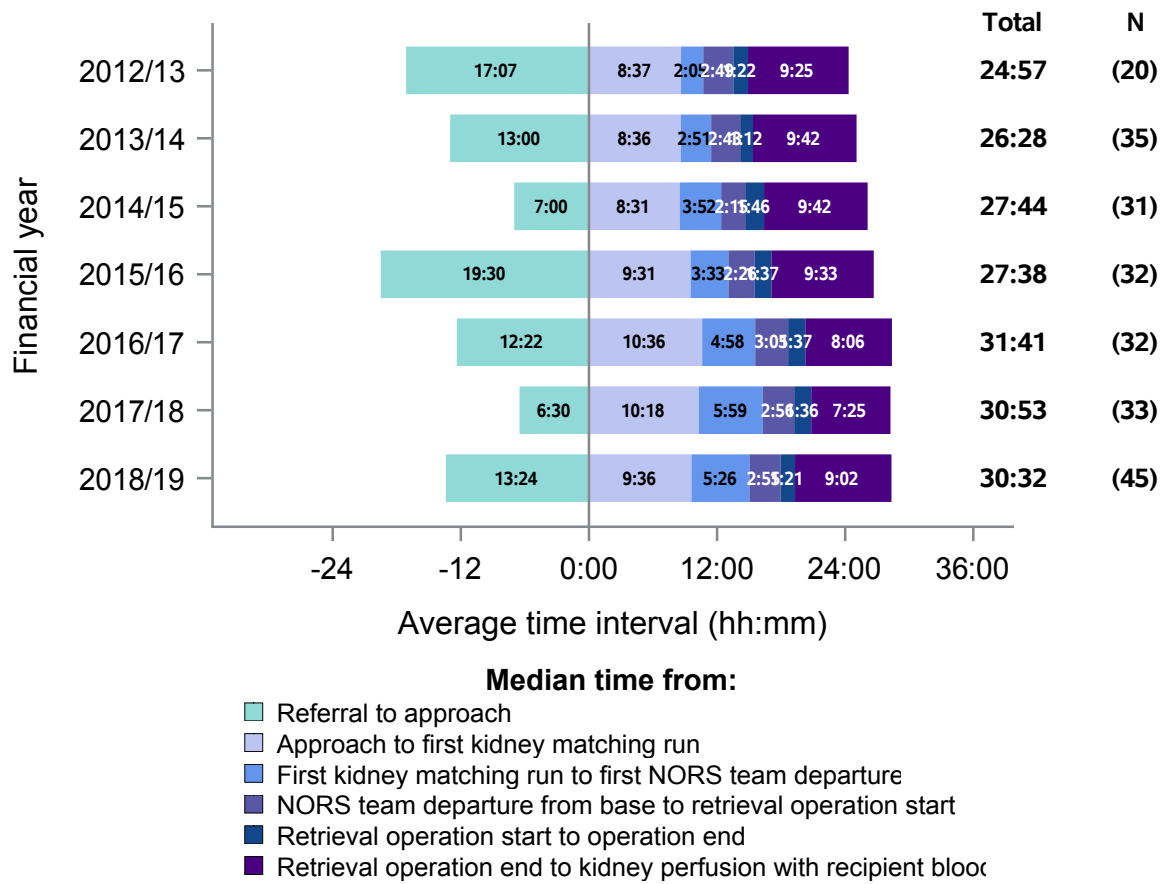
London

Figure 8 - Median times of DBD organ donation process, London, 1 April 2012 - 31 March 2019



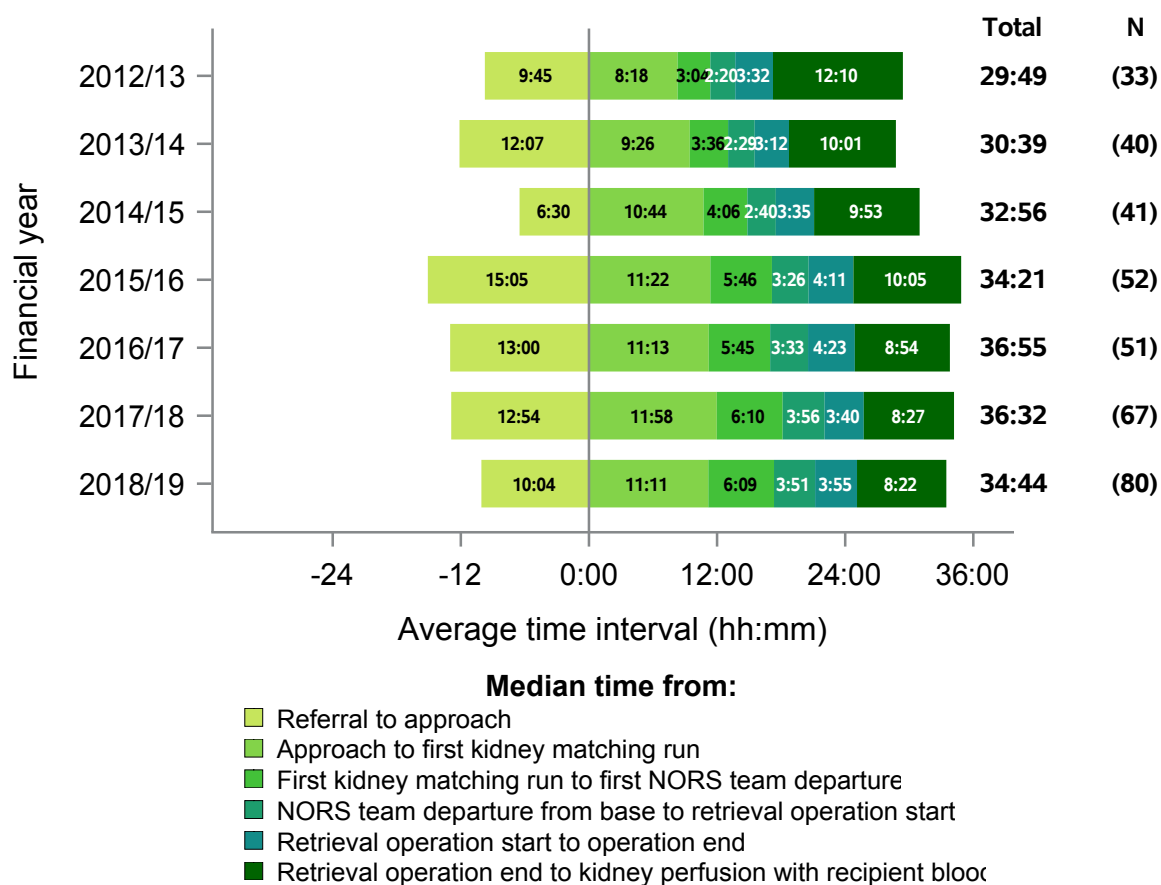
London

Figure 9 - Median times of DCD organ donation process, London, 1 April 2012 - 31 March 2019



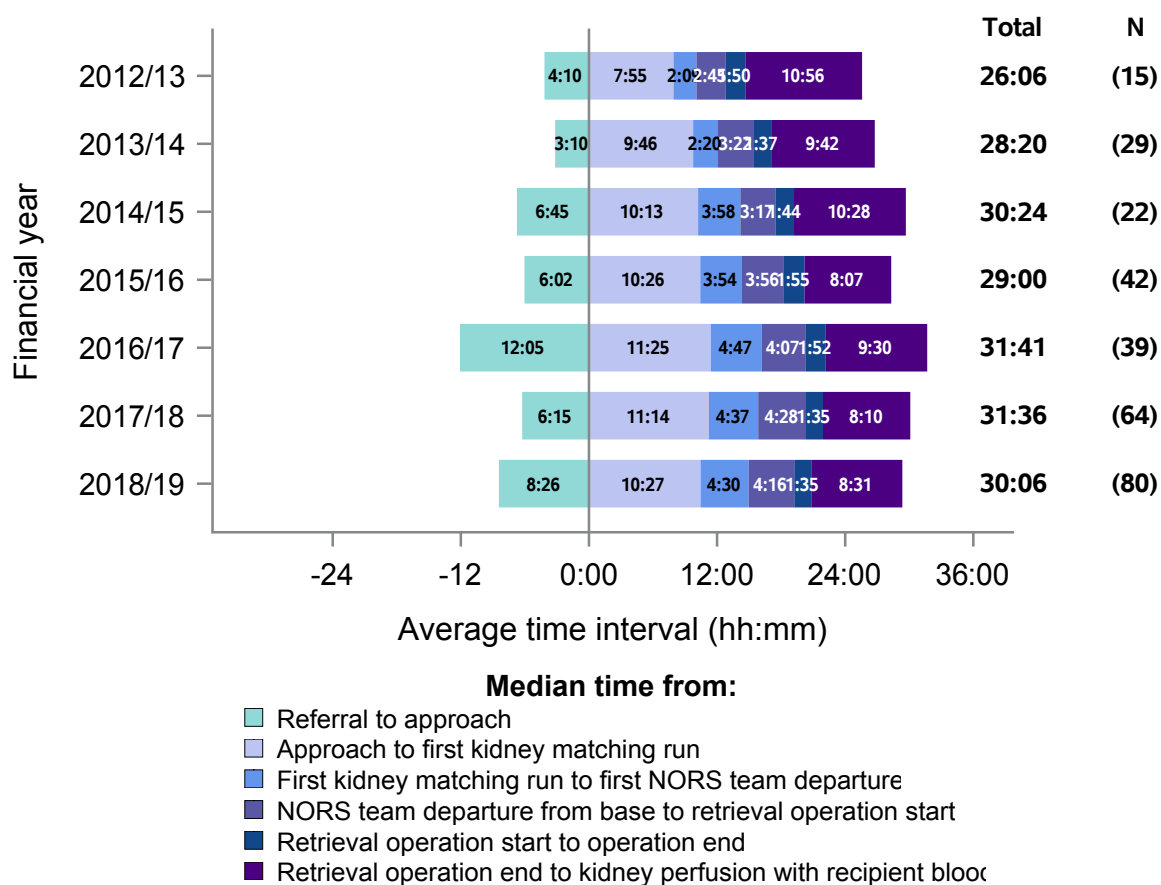
Midlands

Figure 10 - Median times of DBD organ donation process, Midlands, 1 April 2012 - 31 March 2019



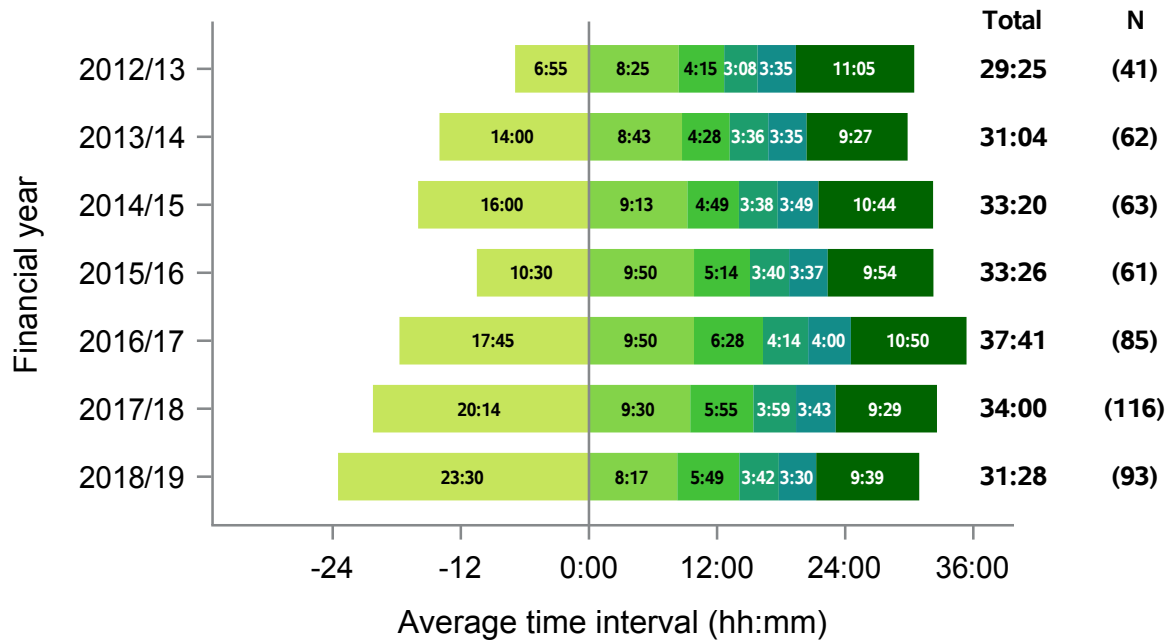
Midlands

Figure 11 - Median times of DCD organ donation process, Midlands, 1 April 2012 - 31 March 2019



North West

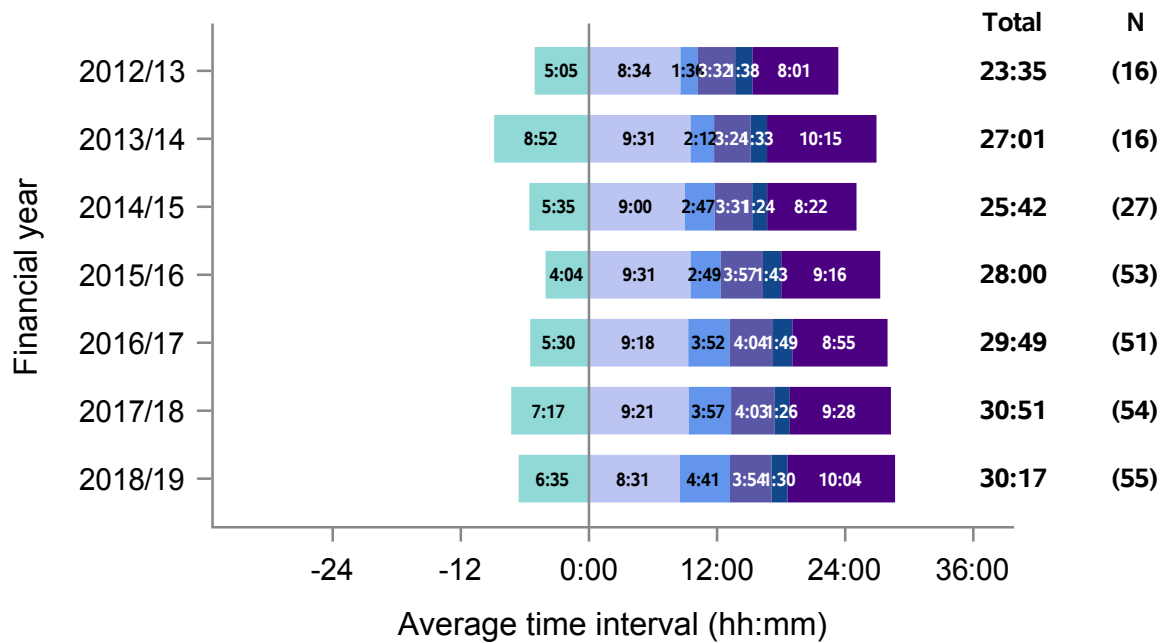
Figure 12 - Median times of DBD organ donation process, North West, 1 April 2012 - 31 March 2019



- Median time from:**
- Referral to approach
 - Approach to first kidney matching run
 - First kidney matching run to first NORS team departure
 - NORS team departure from base to retrieval operation start
 - Retrieval operation start to operation end
 - Retrieval operation end to kidney perfusion with recipient blood

North West

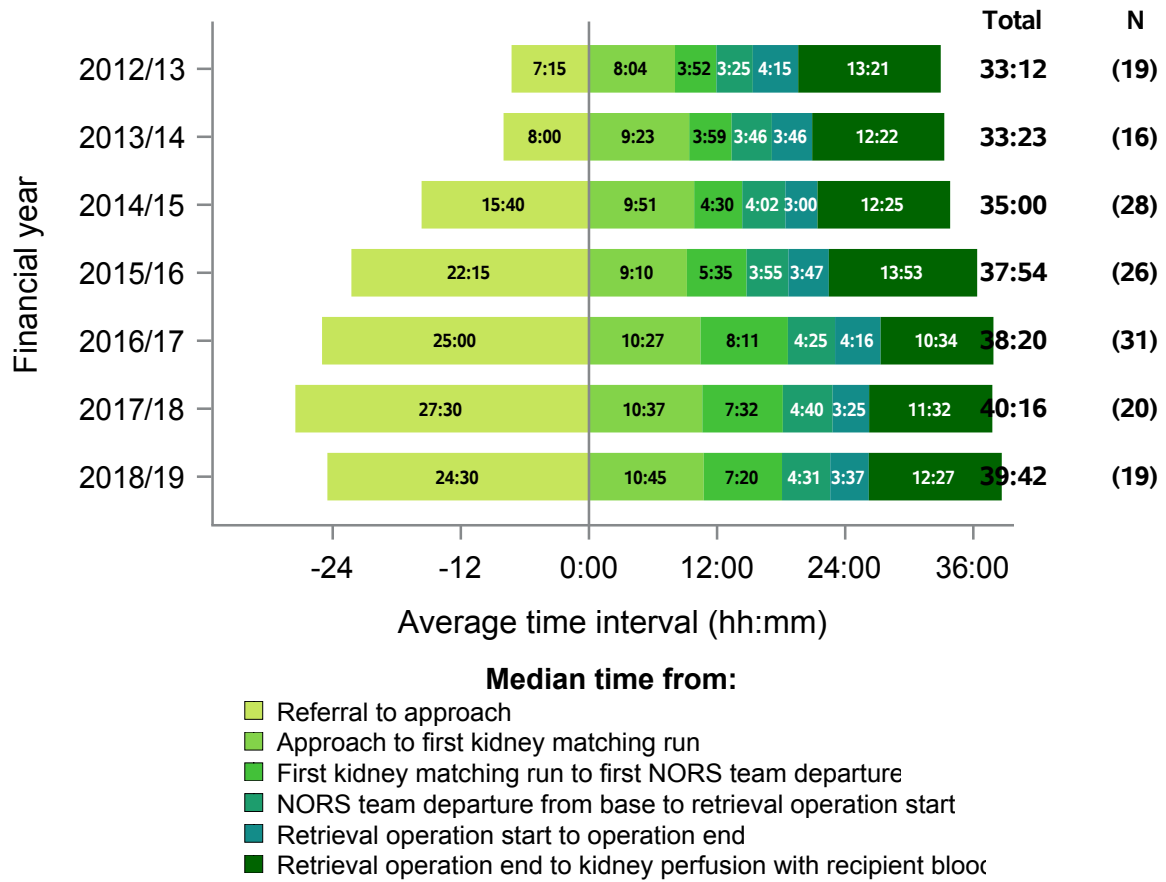
Figure 13 - Median times of DCD organ donation process, North West, 1 April 2012 - 31 March 2019



- Median time from:**
- Referral to approach
 - Approach to first kidney matching run
 - First kidney matching run to first NORS team departure
 - NORS team departure from base to retrieval operation start
 - Retrieval operation start to operation end
 - Retrieval operation end to kidney perfusion with recipient blood

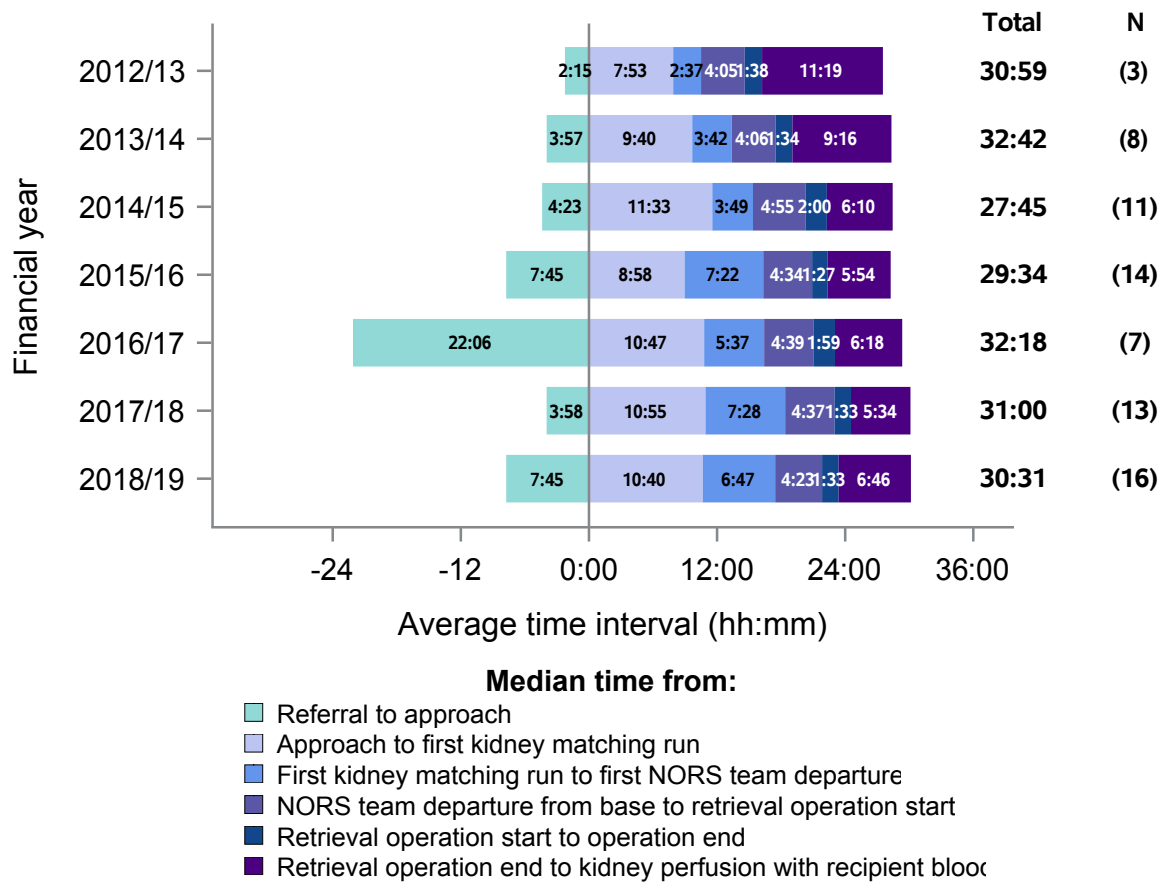
Northern Ireland

Figure 14 - Median times of DBD organ donation process, Northern Ireland, 1 April 2012 - 31 March 2019



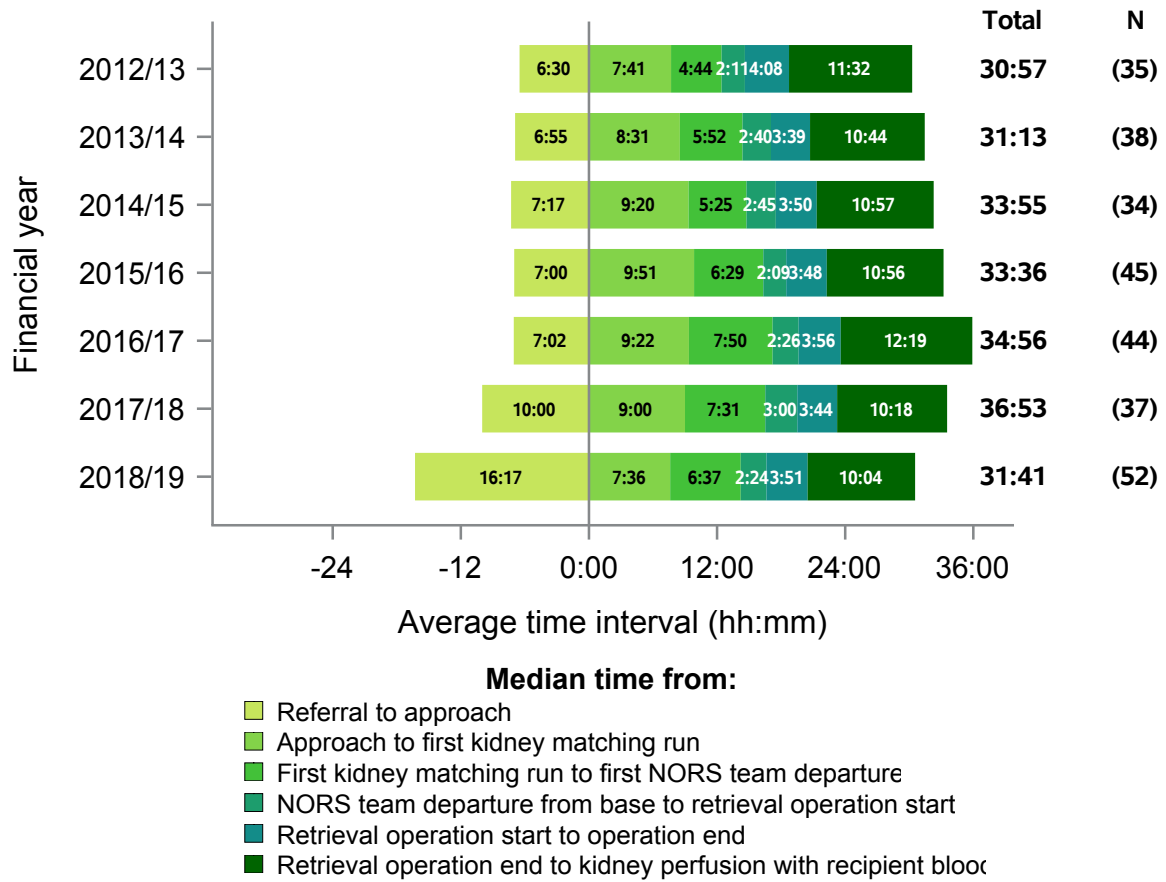
Northern Ireland

Figure 15 - Median times of DCD organ donation process, Northern Ireland, 1 April 2012 - 31 March 2019



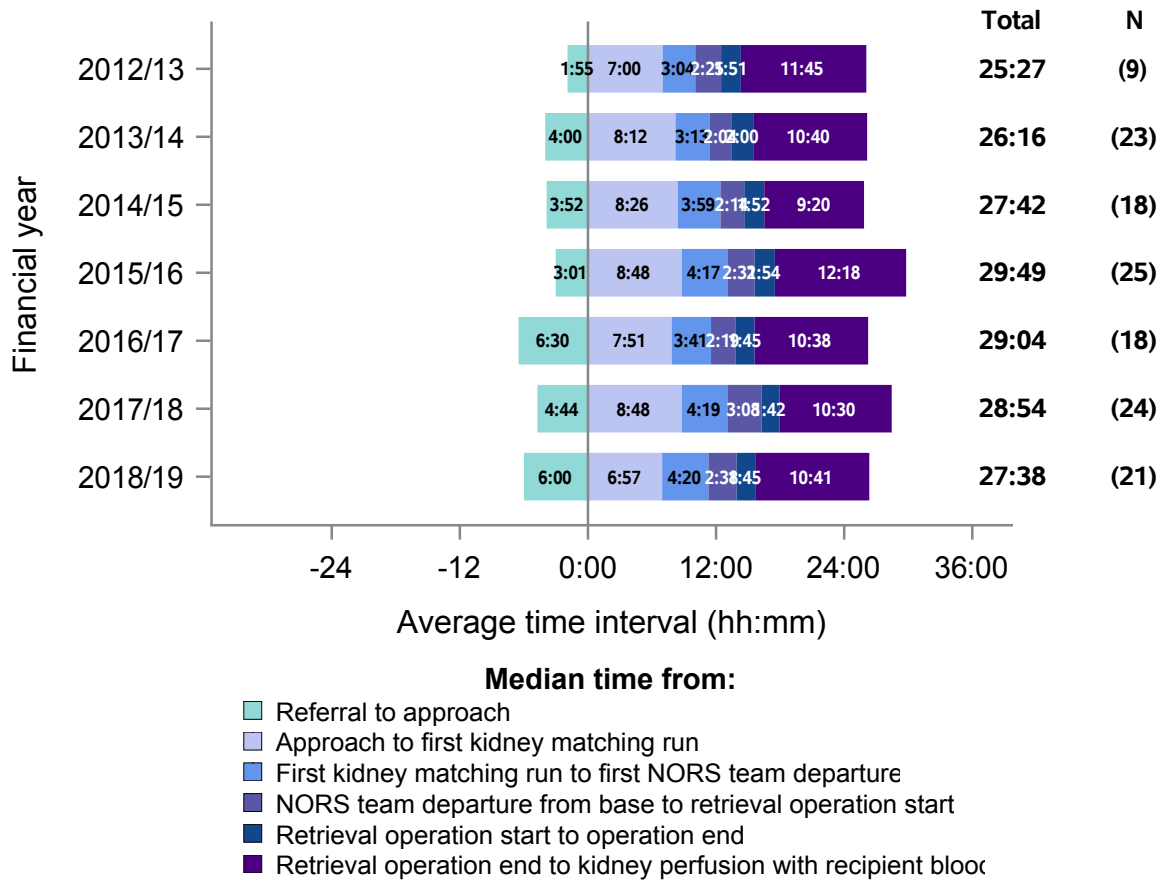
Northern

Figure 16 - Median times of DBD organ donation process, Northern, 1 April 2012 - 31 March 2019



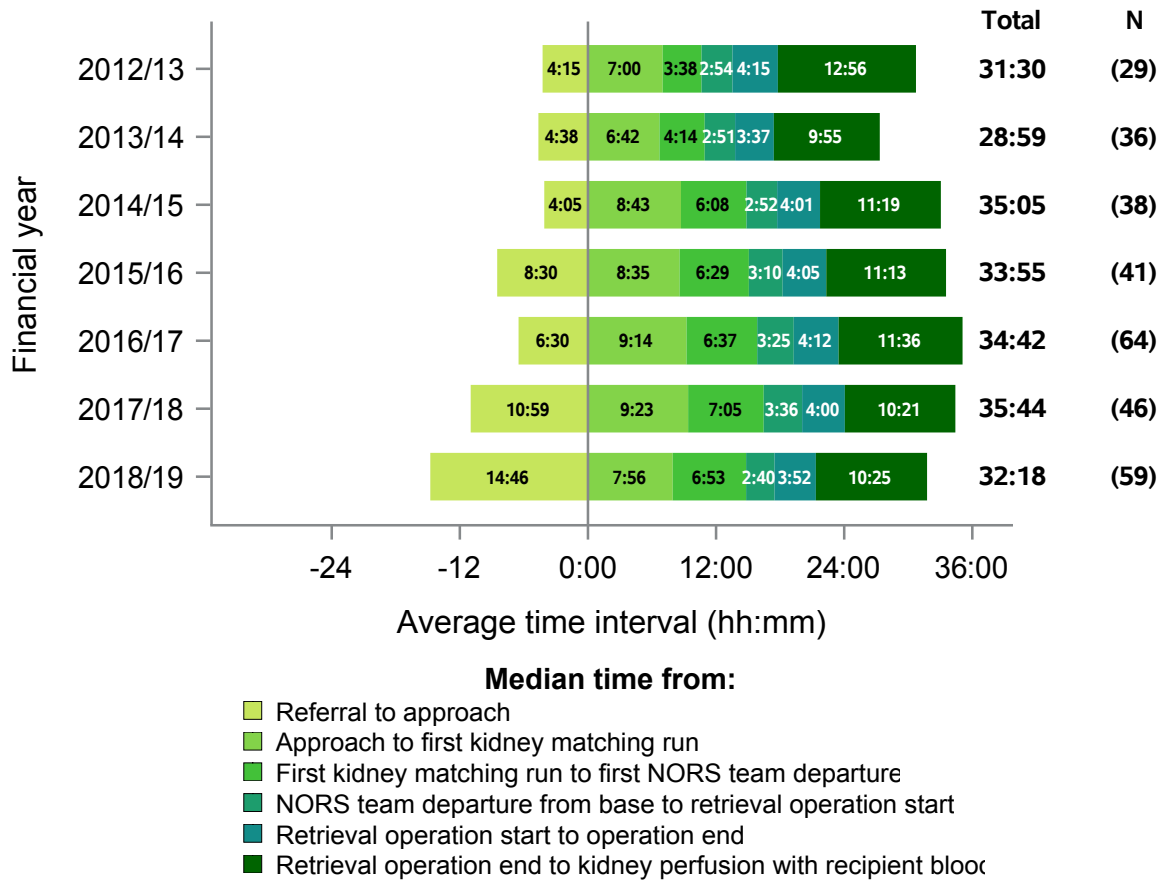
Northern

Figure 17 - Median times of DCD organ donation process, Northern, 1 April 2012 - 31 March 2019



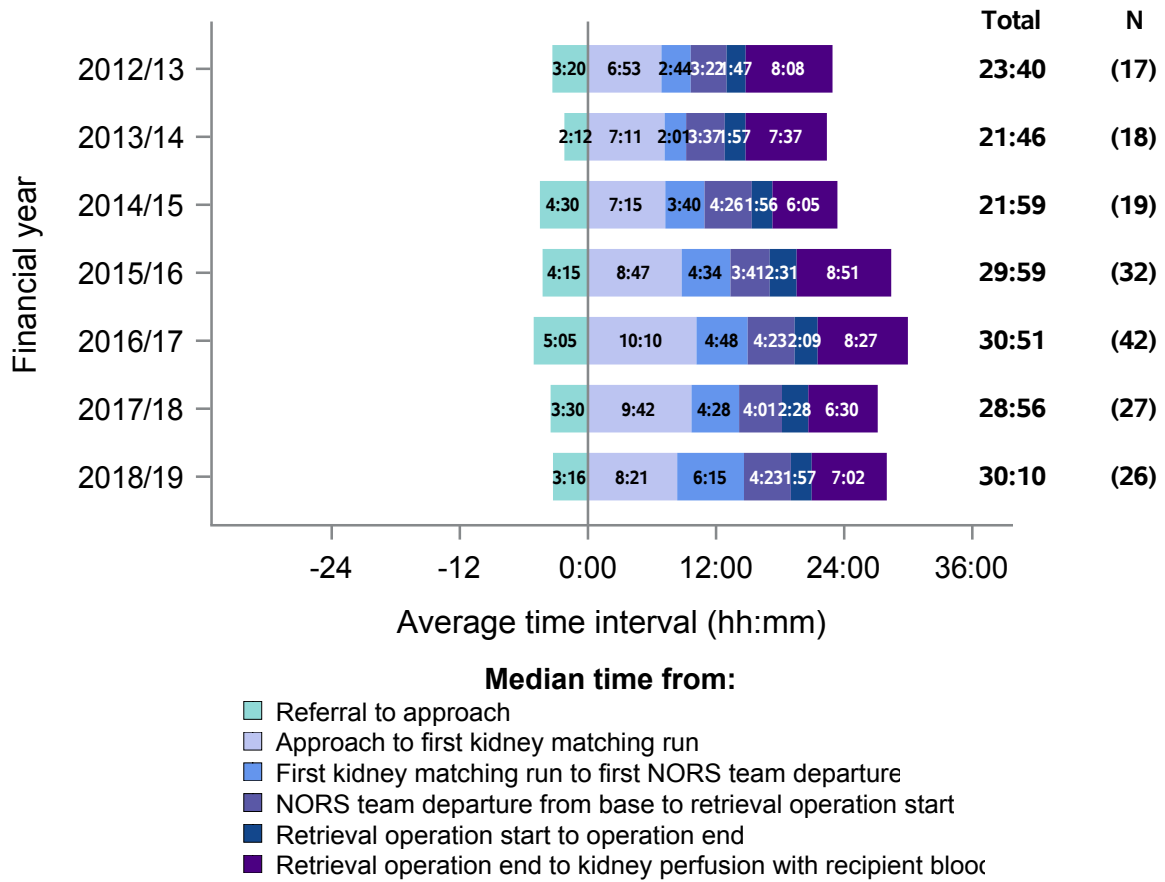
Scotland

Figure 18 - Median times of DBD organ donation process, Scotland, 1 April 2012 - 31 March 2019



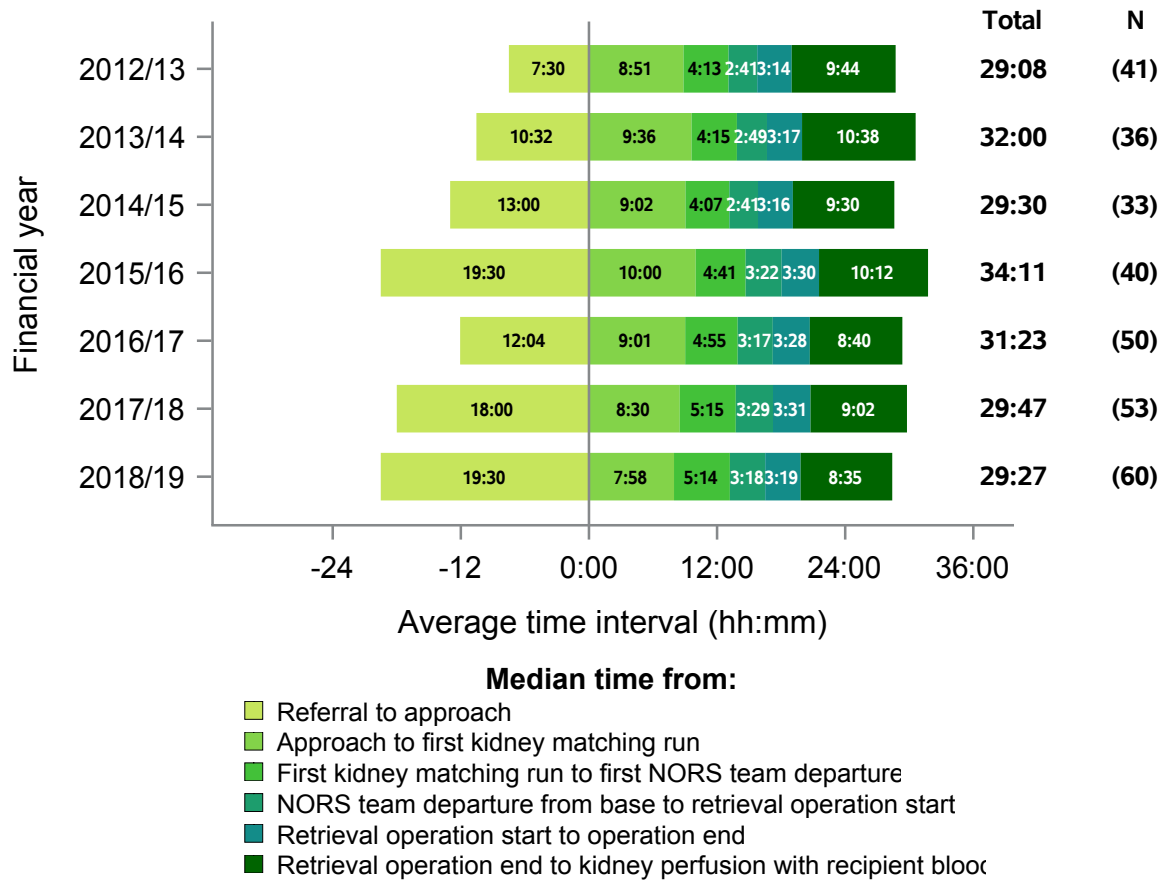
Scotland

Figure 19 - Median times of DCD organ donation process, Scotland, 1 April 2012 - 31 March 2019



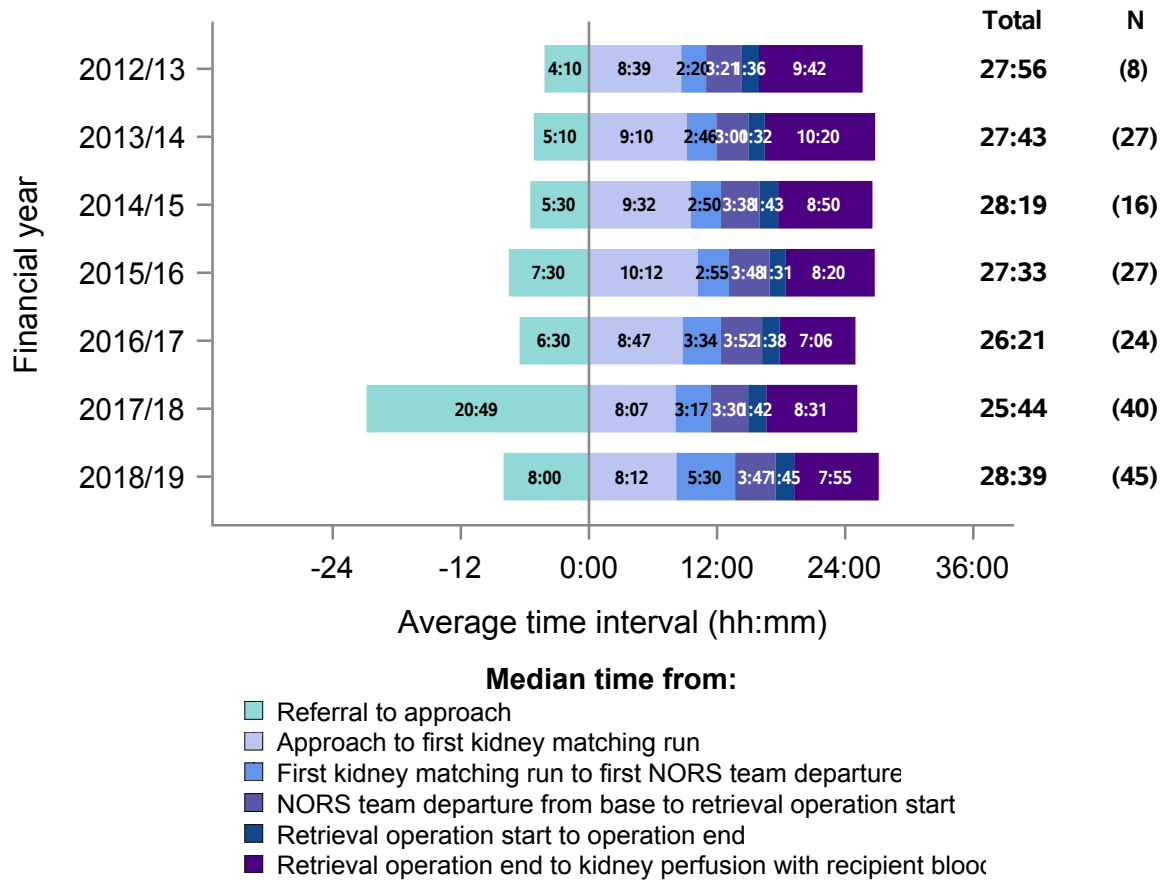
South Central

Figure 20 - Median times of DBD organ donation process, South Central, 1 April 2012 - 31 March 2019



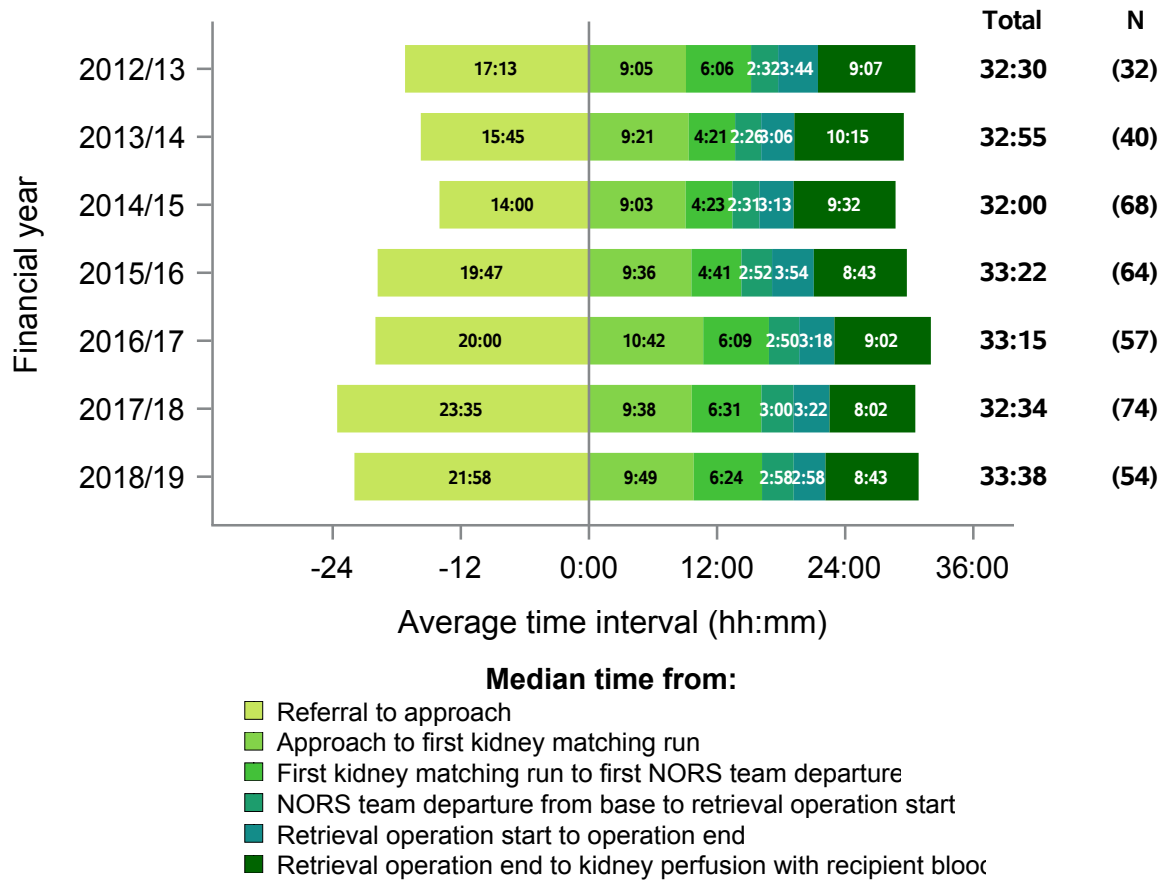
South Central

Figure 21 - Median times of DCD organ donation process, South Central, 1 April 2012 - 31 March 2019



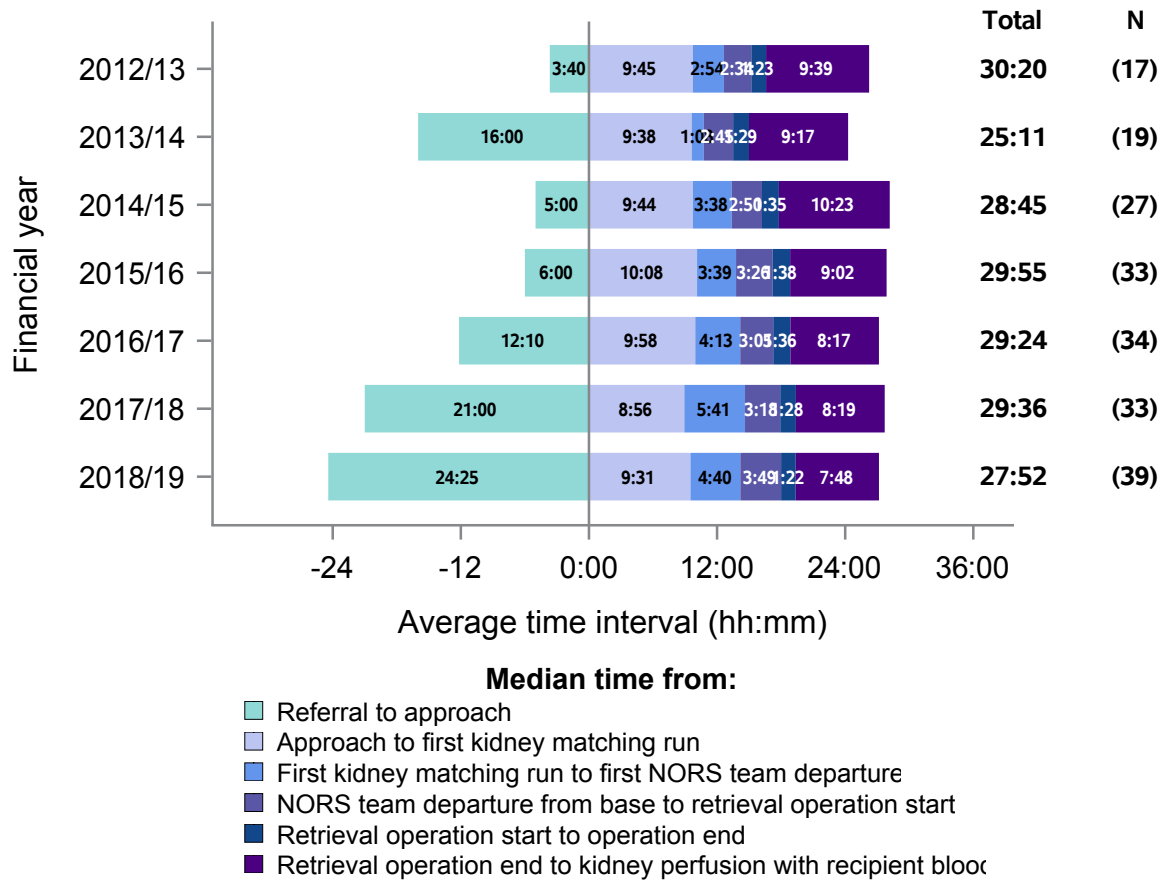
South East

Figure 22 - Median times of DBD organ donation process, South East, 1 April 2012 - 31 March 2019



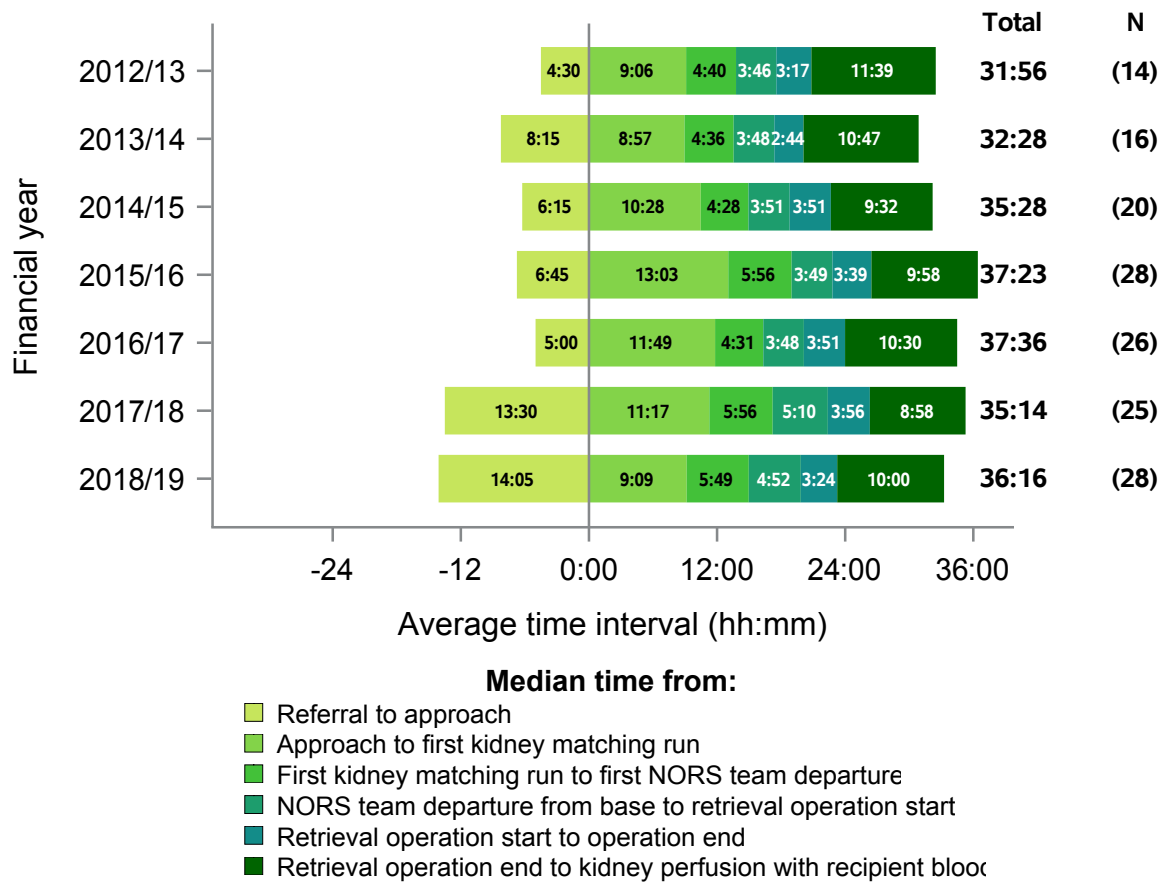
South East

Figure 23 - Median times of DCD organ donation process, South East, 1 April 2012 - 31 March 2019



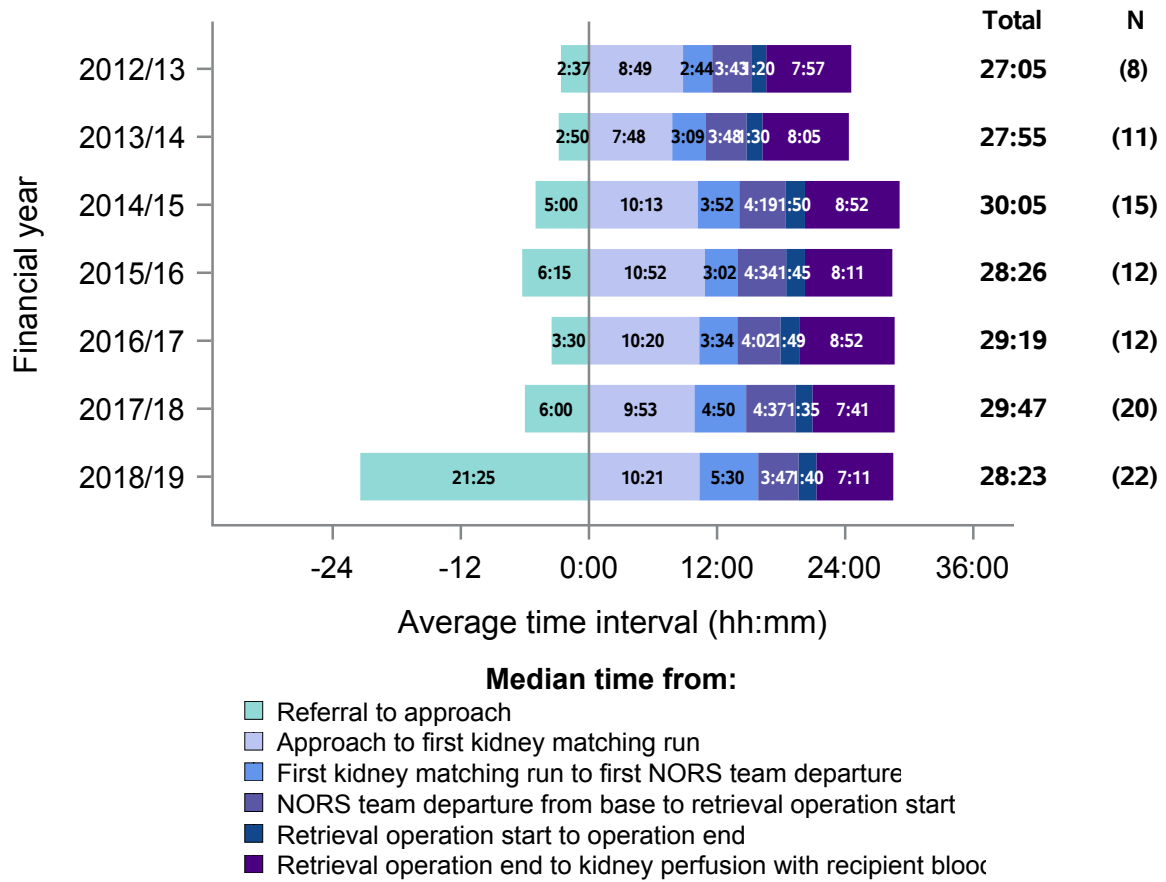
South Wales

Figure 24 - Median times of DBD organ donation process, South Wales, 1 April 2012 - 31 March 2019



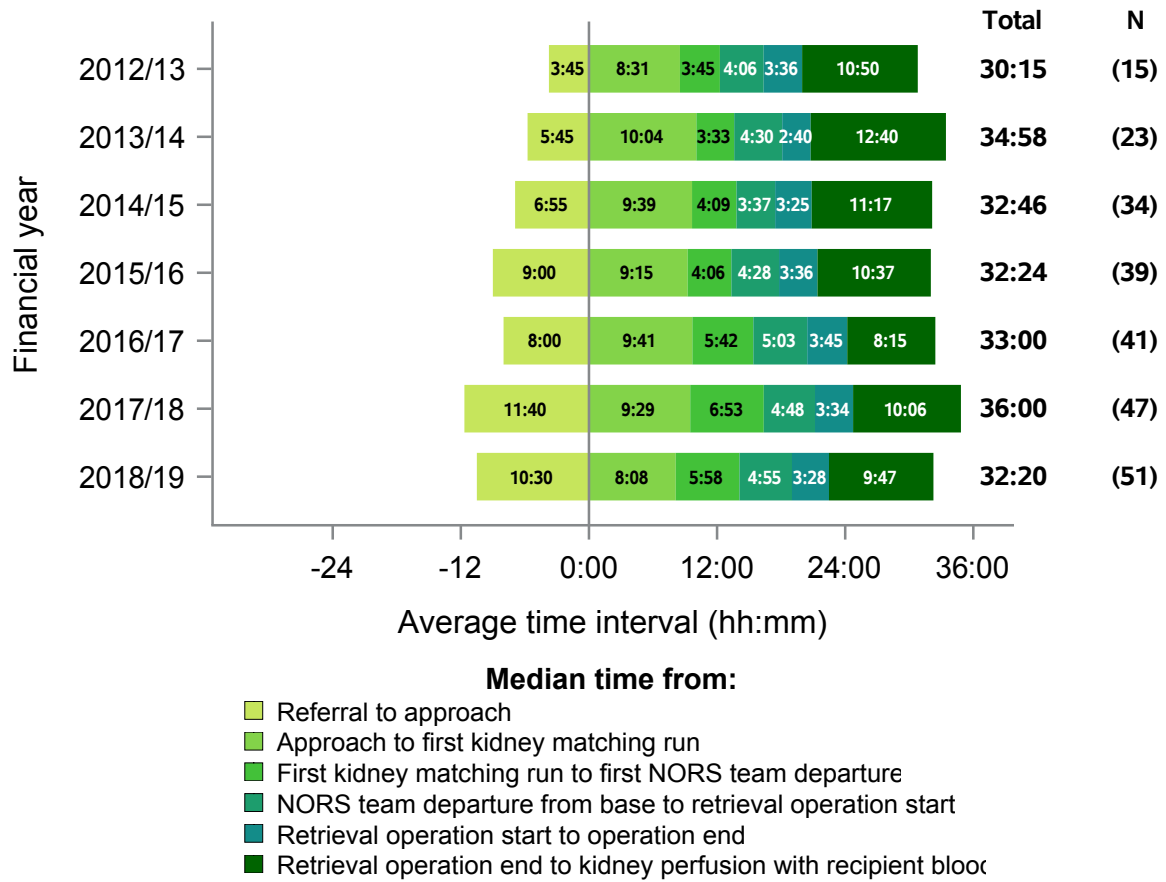
South Wales

Figure 25 - Median times of DCD organ donation process, South Wales, 1 April 2012 - 31 March 2019



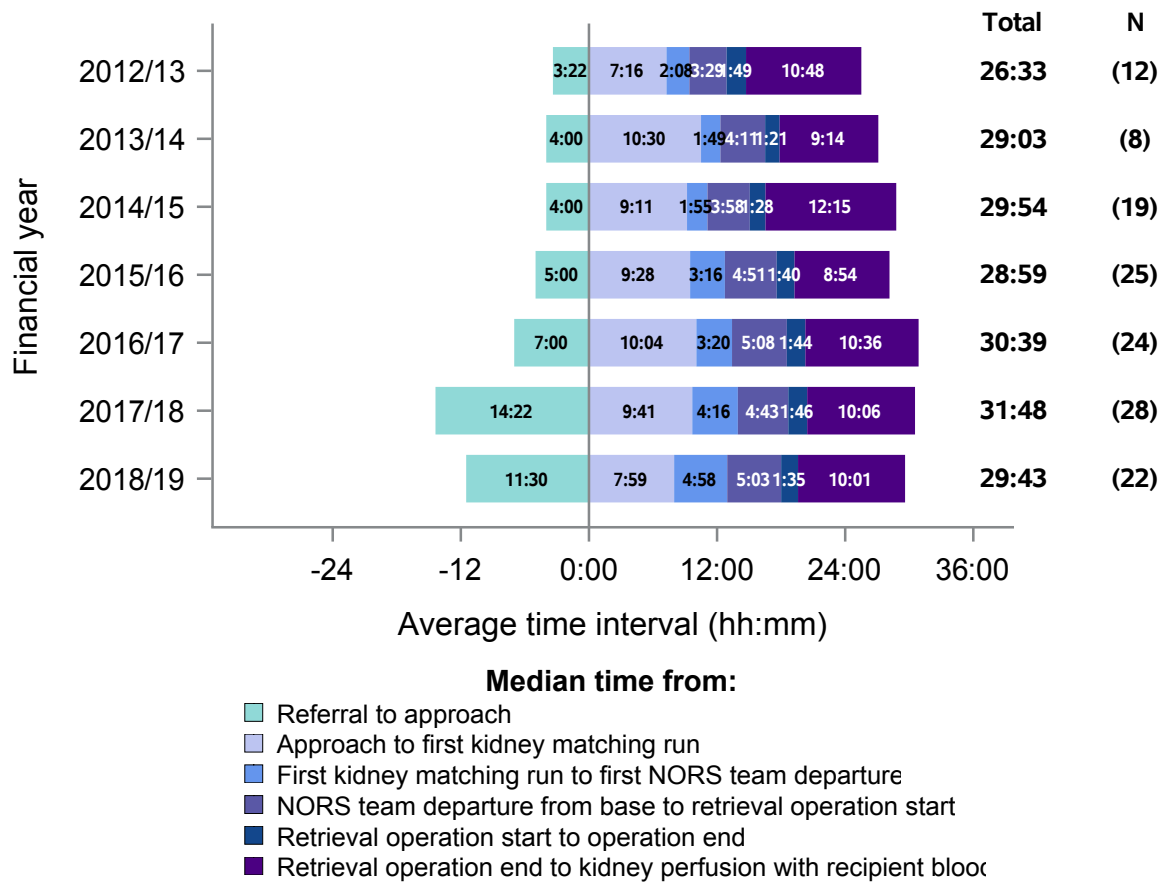
South West

Figure 26 - Median times of DBD organ donation process, South West, 1 April 2012 - 31 March 2019



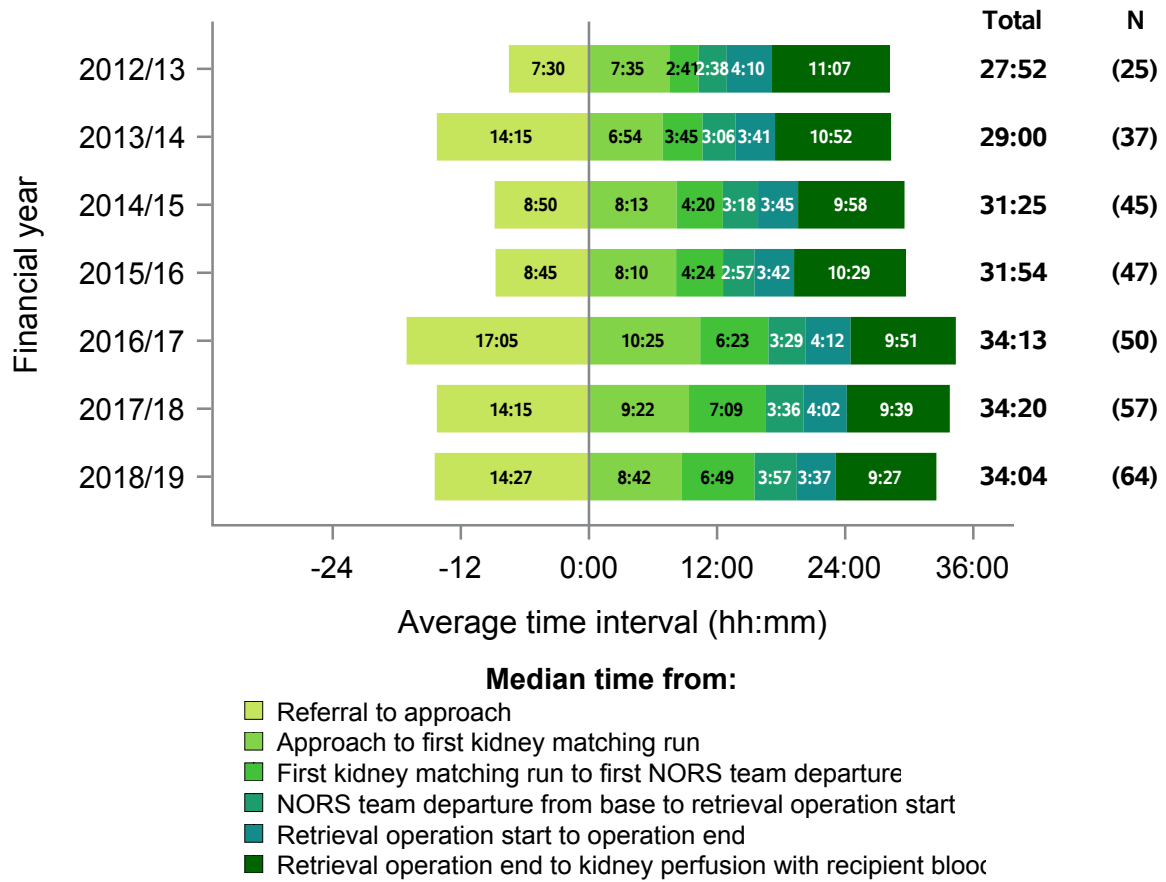
South West

Figure 27 - Median times of DCD organ donation process, South West, 1 April 2012 - 31 March 2019



Yorkshire

Figure 28 - Median times of DBD organ donation process, Yorkshire, 1 April 2012 - 31 March 2019



Yorkshire

Figure 29 - Median times of DCD organ donation process, Yorkshire, 1 April 2012 - 31 March 2019

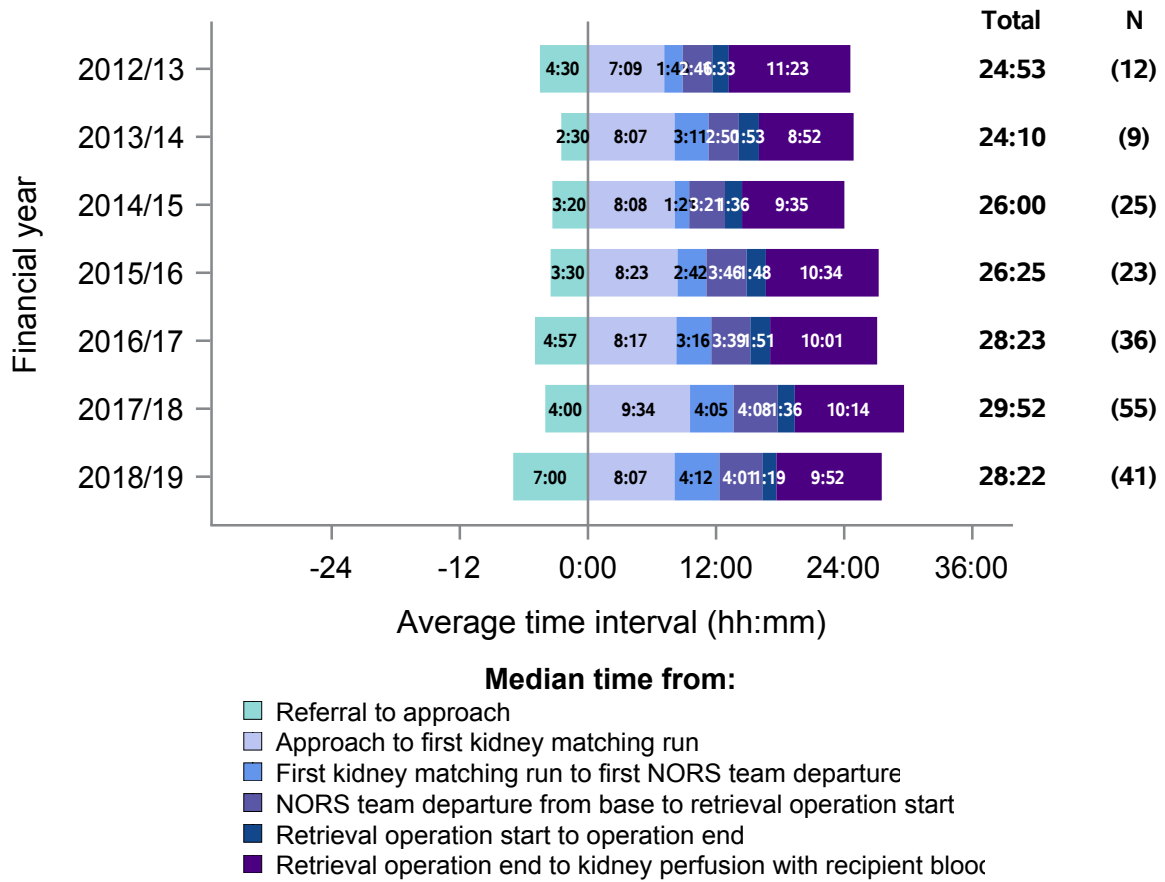


Table 3 Summary of Organ Donation Services Teams median timings, DBD, 2018/19

Team name	Referral to approach	Approach to first kidney matching run	First kidney matching run to first NORS team departure	NORS team departure from base to retrieval operation start	Retrieval operation start to operation end	Retrieval operation end to kidney perfusion with recipient blood
Eastern	18:25	11:18	6:06	3:11	3:43	9:45
London	26:10	11:15	8:15	2:56	3:22	8:14
Midlands	10:04	11:11	6:09	3:51	3:55	8:22
Northern	16:17	7:36	6:37	2:24	3:51	10:04
Northern Ireland	24:30	10:45	7:20	4:31	3:37	12:27
North West	23:30	8:17	5:49	3:42	3:30	9:39
Scotland	14:46	7:56	6:53	2:40	3:52	10:25
South Central	19:30	7:58	5:14	3:18	3:19	8:35
South East	21:58	9:49	6:24	2:58	2:58	8:43
South Wales	14:05	9:09	5:49	4:52	3:24	10:00
South West	10:30	8:08	5:58	4:55	3:28	9:47
Yorkshire	14:27	8:42	6:49	3:57	3:37	9:27

Table 4 Summary of Organ Donation Services Teams median timings, DCD, 2018/19

Team name	Referral to approach	Approach to first kidney matching run	First kidney matching run to first NORS team departure	NORS team departure from base to operation start	Operation start to operation end	Operation end to kidney perfusion with recipient's blood
Eastern	13:52	10:16	4:53	2:58	2:00	9:27
London	13:24	9:36	5:26	2:55	1:21	9:02
Midlands	8:26	10:27	4:30	4:16	1:35	8:31
Northern	6:00	6:57	4:20	2:38	1:45	10:41
Northern Ireland	7:45	10:40	6:47	4:23	1:33	6:46
North West	6:35	8:31	4:41	3:54	1:30	10:04
Scotland	3:16	8:21	6:15	4:23	1:57	7:02
South Central	8:00	8:12	5:30	3:47	1:45	7:55
South East	24:25	9:31	4:40	3:49	1:22	7:48
South Wales	21:25	10:21	5:30	3:47	1:40	7:11
South West	11:30	7:59	4:58	5:03	1:35	10:01
Yorkshire	7:00	8:07	4:12	4:01	1:19	9:52