

Paediatric and Neonatal Deceased Donation Strategy – Invitational Meeting Data Booklet

June 2019



Trends in paediatric organ donation and transplantation

Deceased paediatric donors (<18 years), transplants and active transplant list in the UK, 1 April 2008 to 31 March 2018

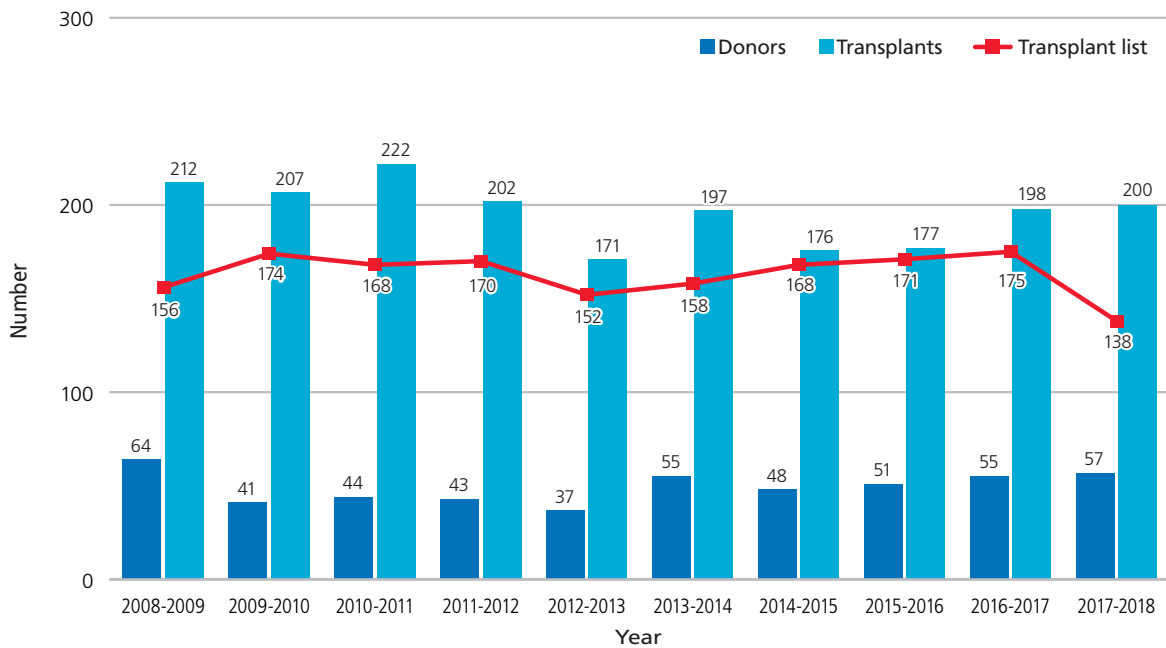
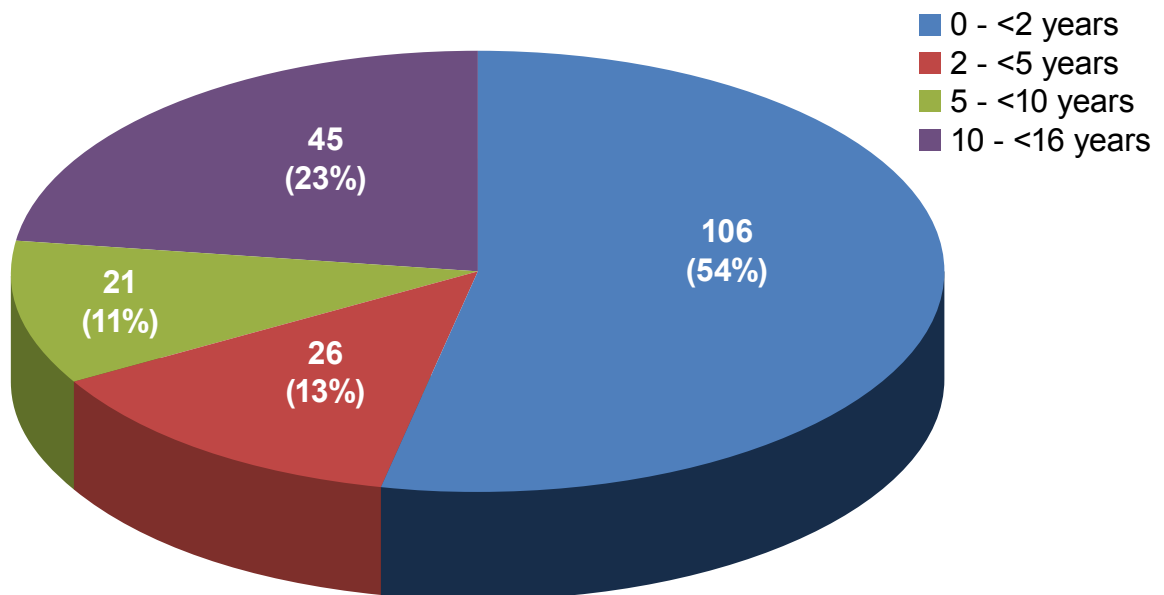


Figure taken from Paediatric and Neonatal Deceased Donation Strategy. Remainder of report includes data on all potential, eligible and actual donors in paediatric intensive care units and paediatric cardiothoracic intensive care units in the UK, unless stated otherwise.

UK PICU donation by age group

PICU potential DBD/eligible DCD donors

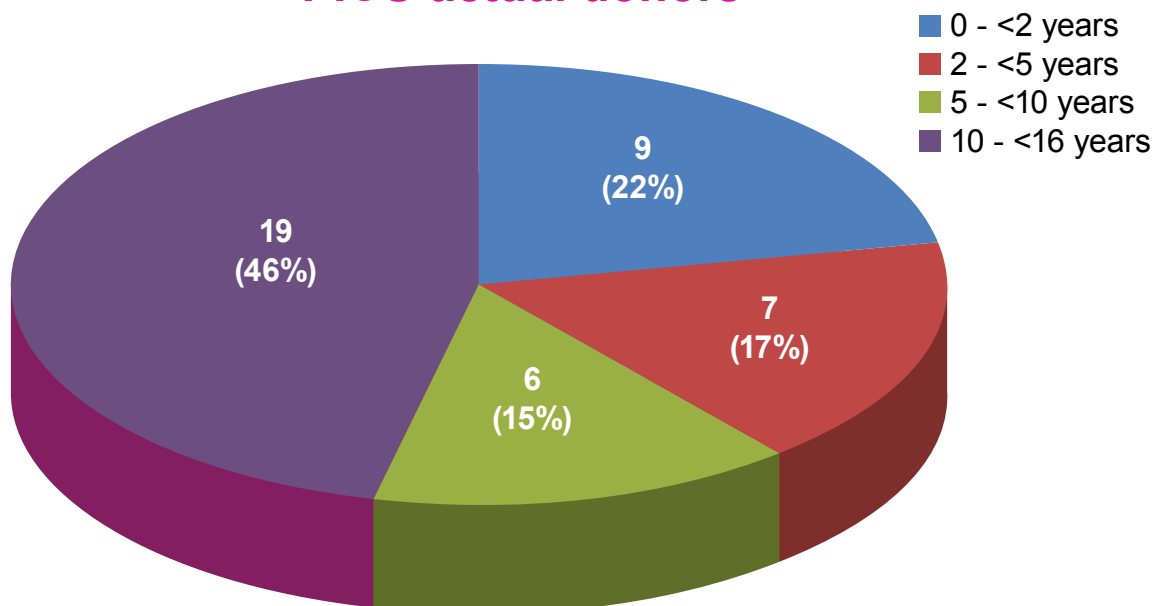


1 April 2018 - 31 March 2019

Potential donors after brain death (DBD) are defined as patients who have neurological death suspected by meeting all of the following criteria: apnoea, coma from known aetiology and unresponsive, ventilated, fixed pupils. Excluding those for whom cardiac arrest occurred despite resuscitation, brain stem reflexes returned.

Eligible donors after circulatory death (DCD) are defined as patients who had treatment withdrawn and death was anticipated within four hours, with no absolute medical contraindications to solid organ donation.

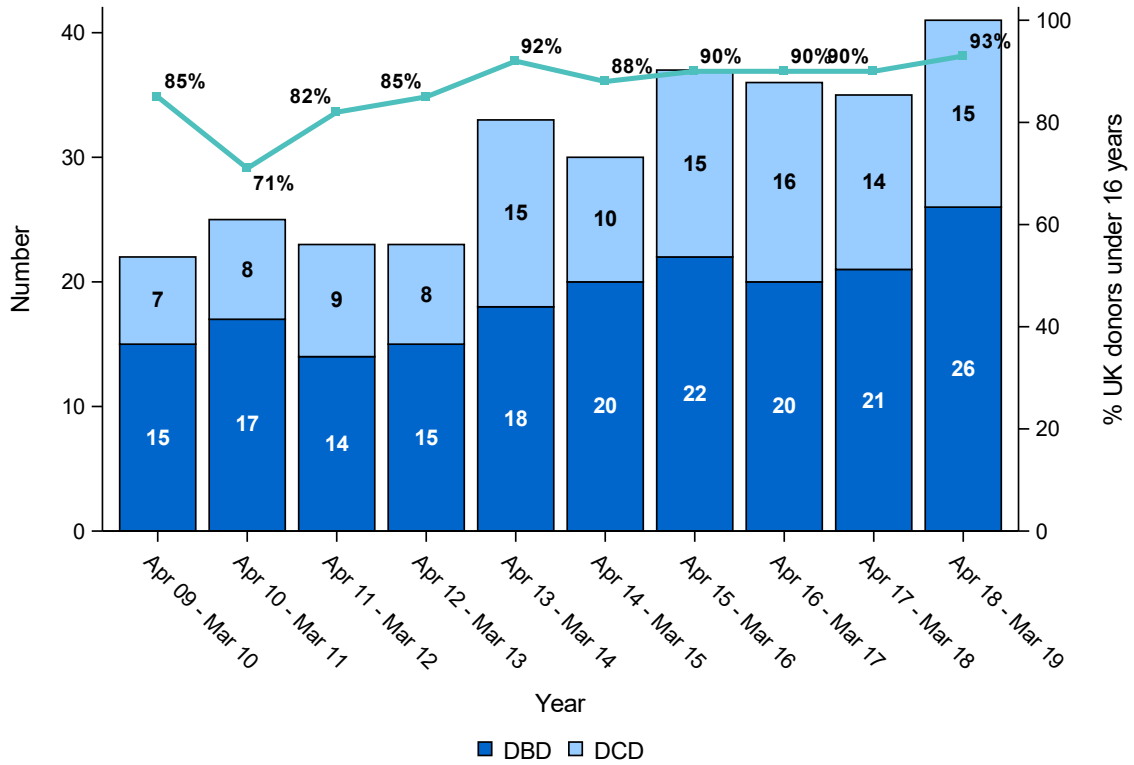
PICU actual donors



1 April 2018 - 31 March 2019

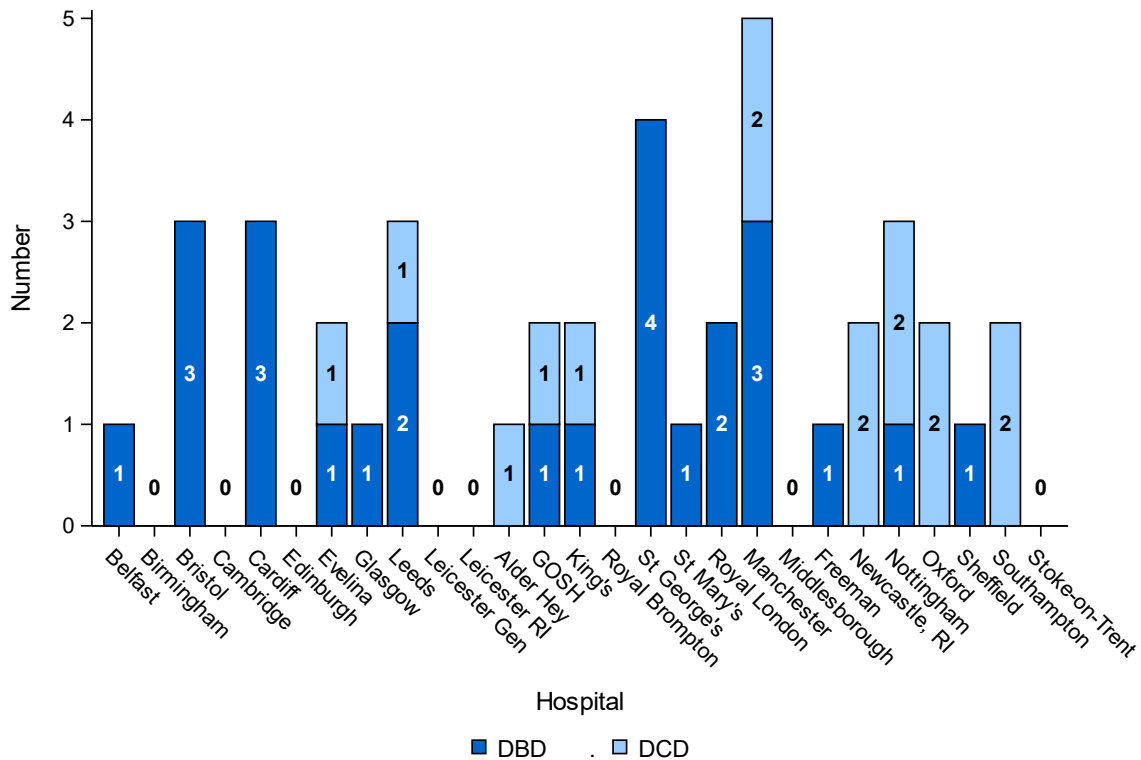
PICU actual deceased donors

1 April 2009 - 31 March 2019



PICU actual deceased donors by hospital

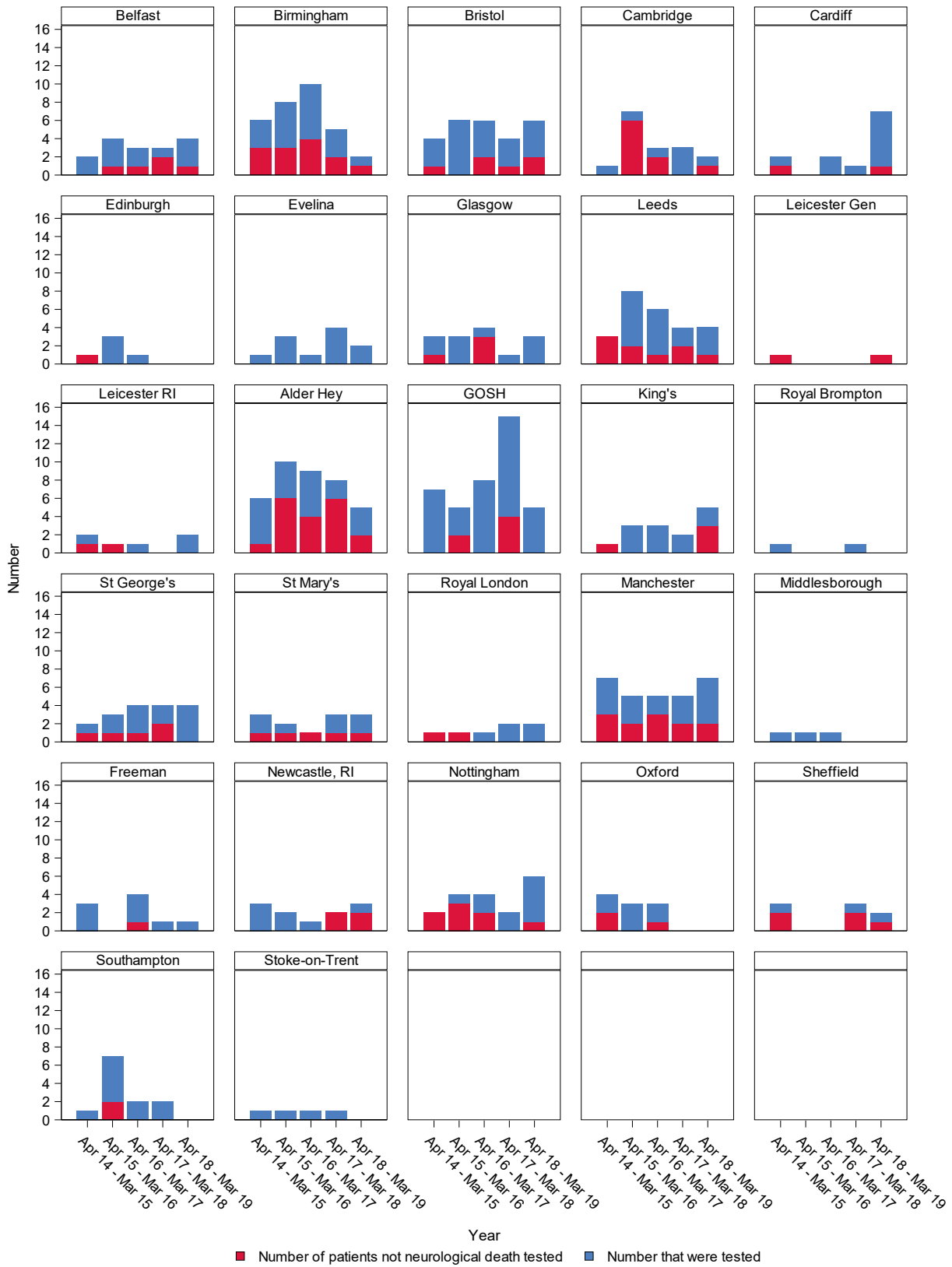
1 April 2018 - 31 March 2019



Between 1 April 2018 and 31 March 2019 there were 3 donors under the age of 16 who donated outside a PICU (1 DBD and 2 DCD).

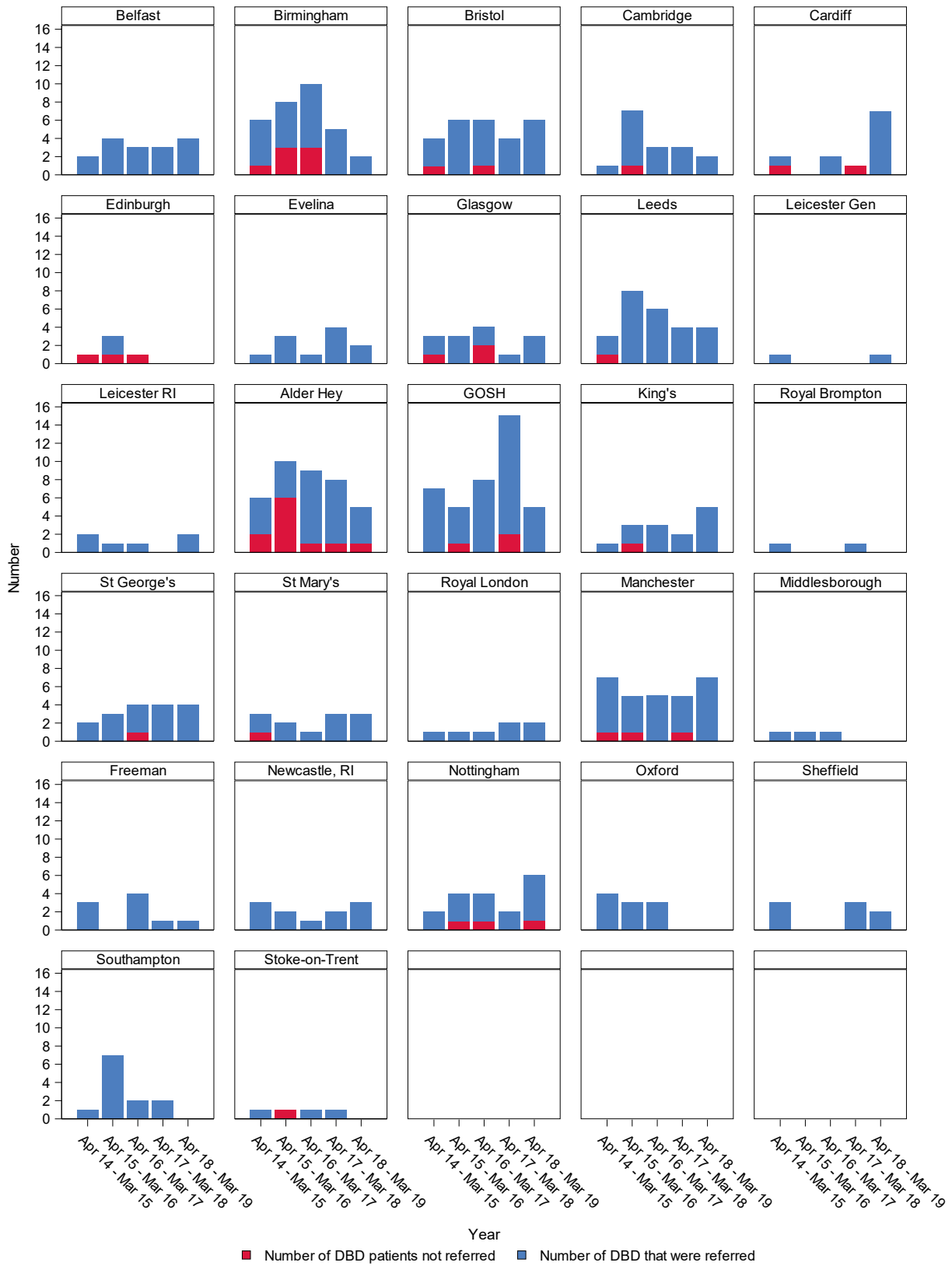
PICU neurological death testing

1 April 2015 - 31 March 2019



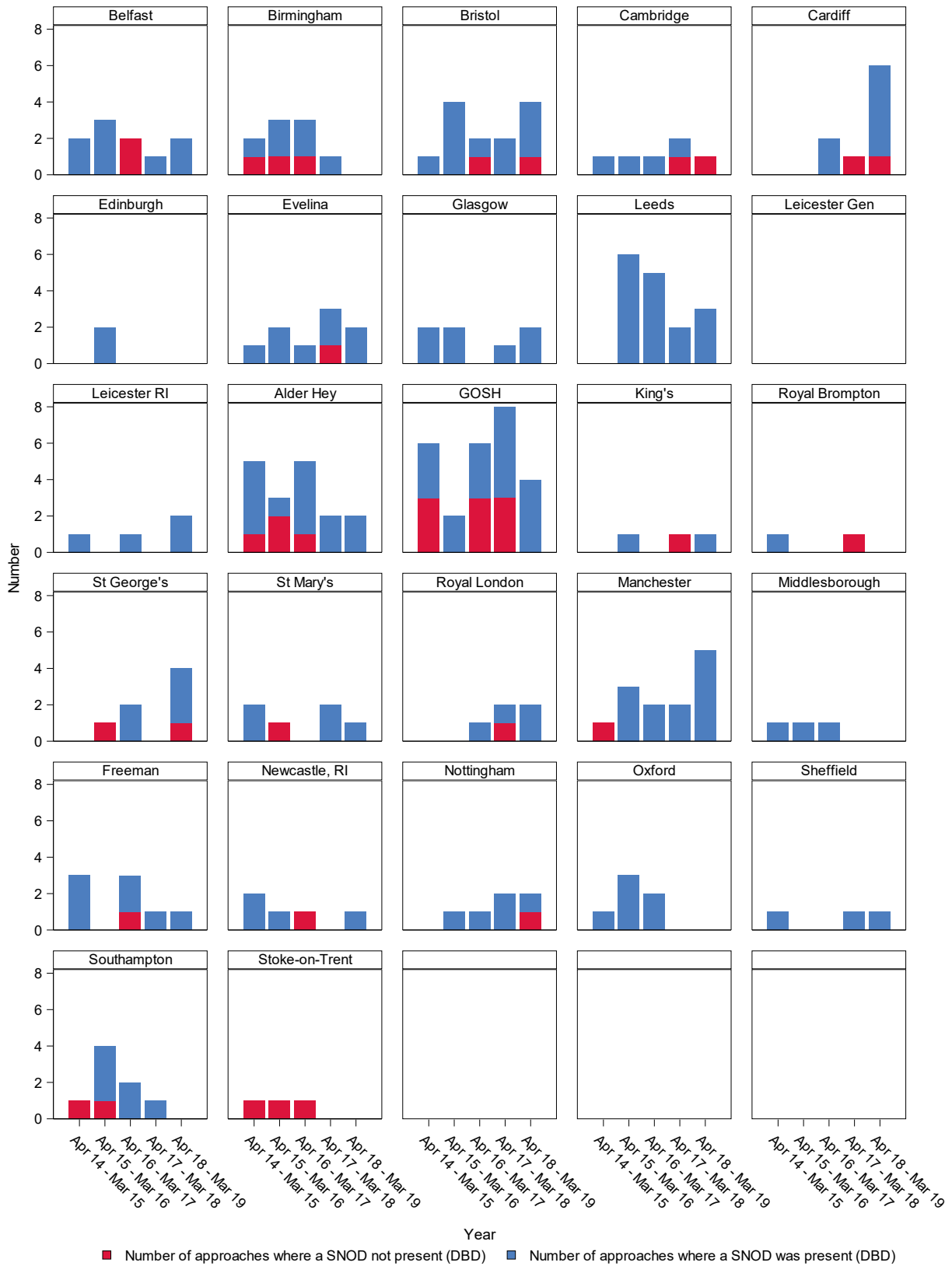
PICU DBD referral

1 April 2015 - 31 March 2019



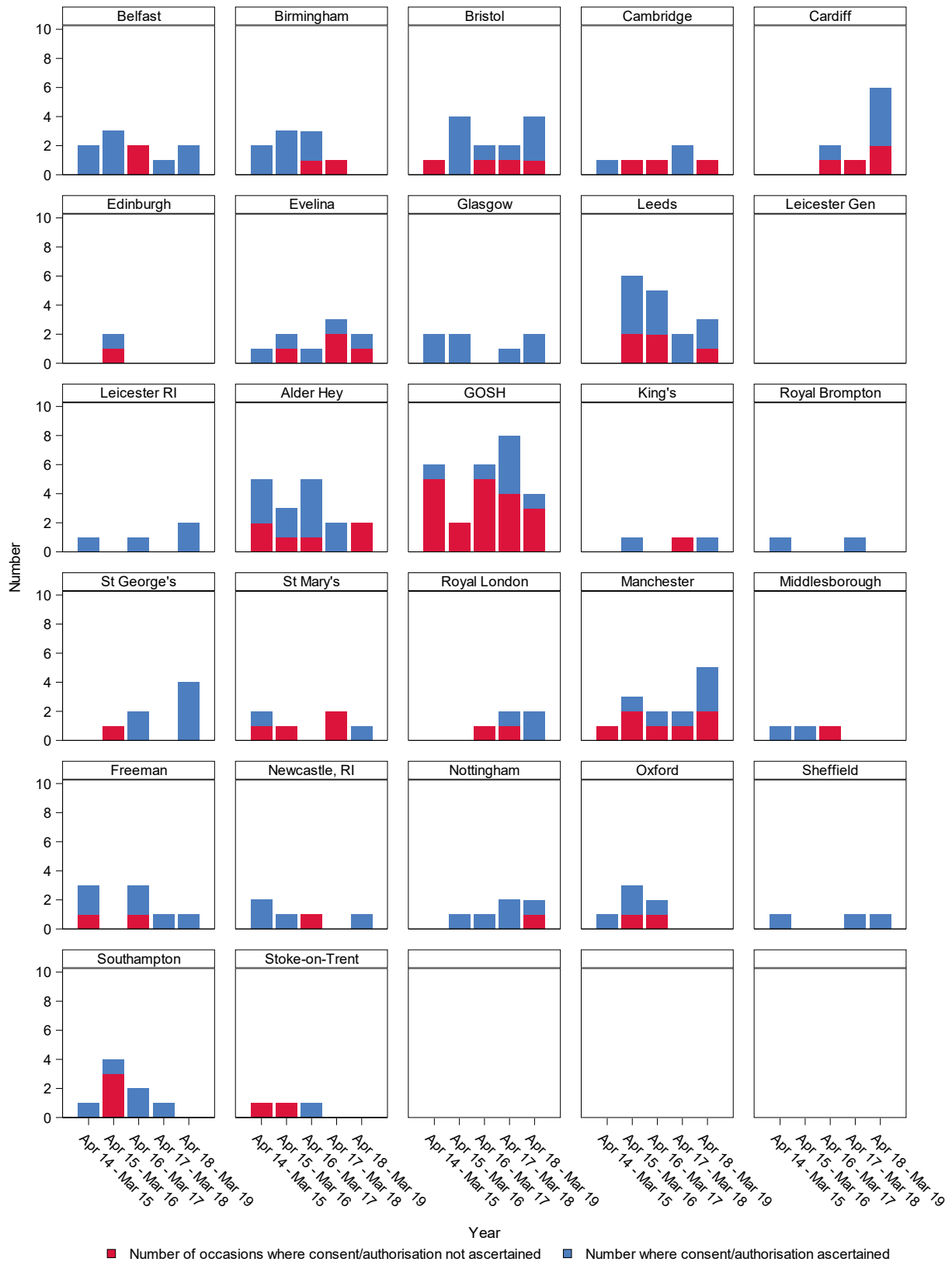
PICU DBD SNOD presence

1 April 2015 - 31 March 2019



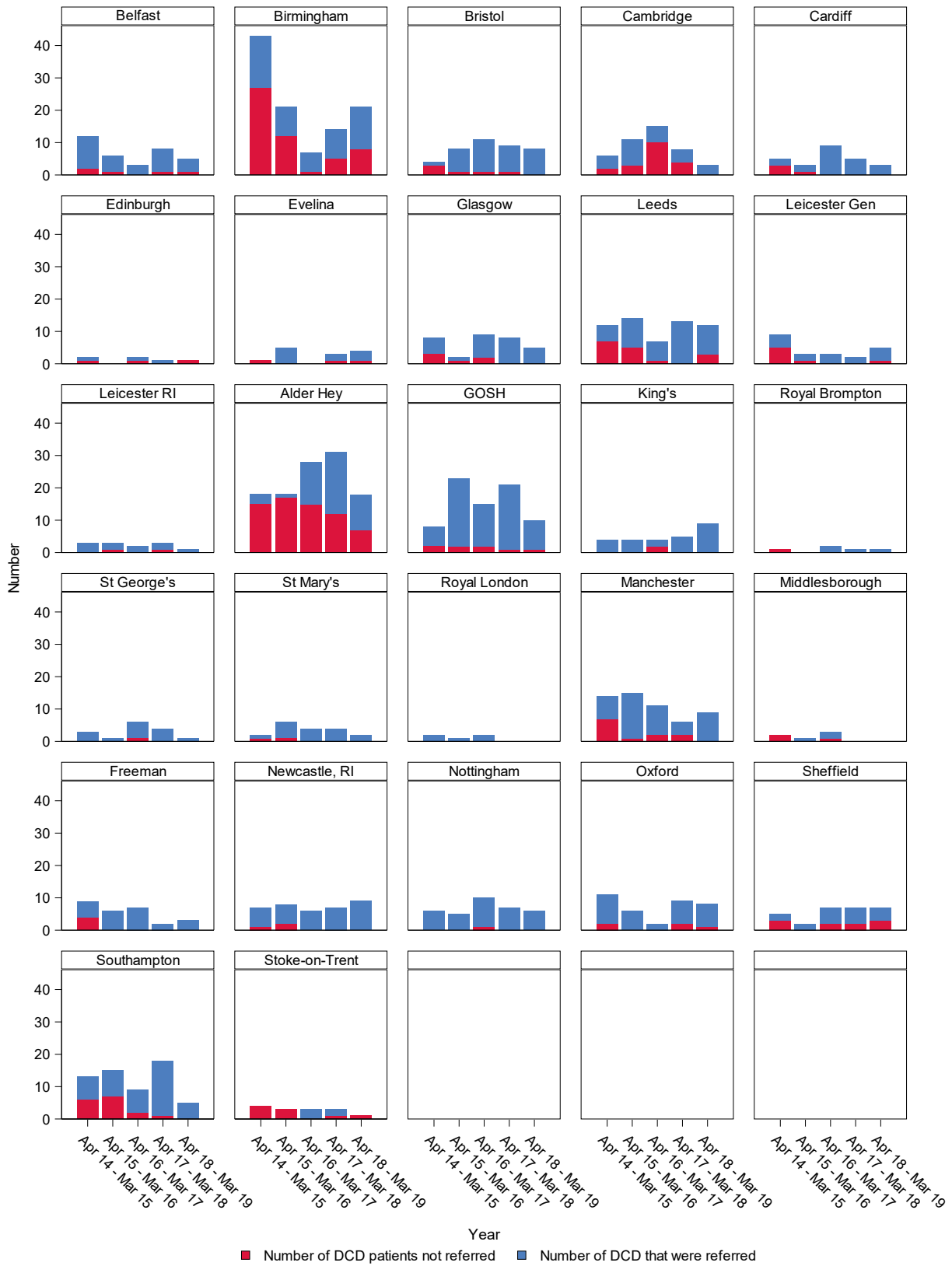
PICU DBD consent/authorisation

1 April 2015 - 31 March 2019



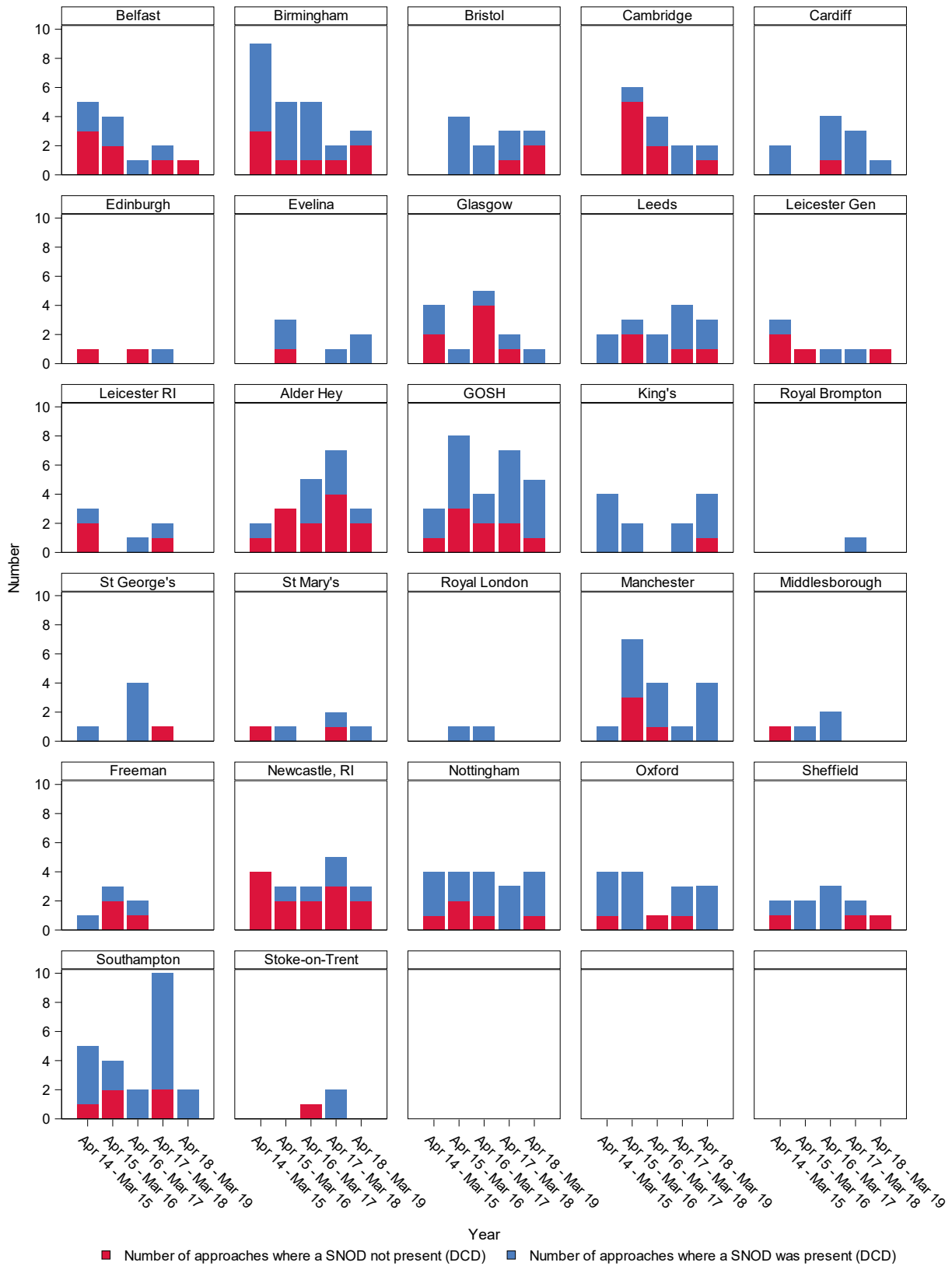
PICU DCD referral

1 April 2015 - 31 March 2019



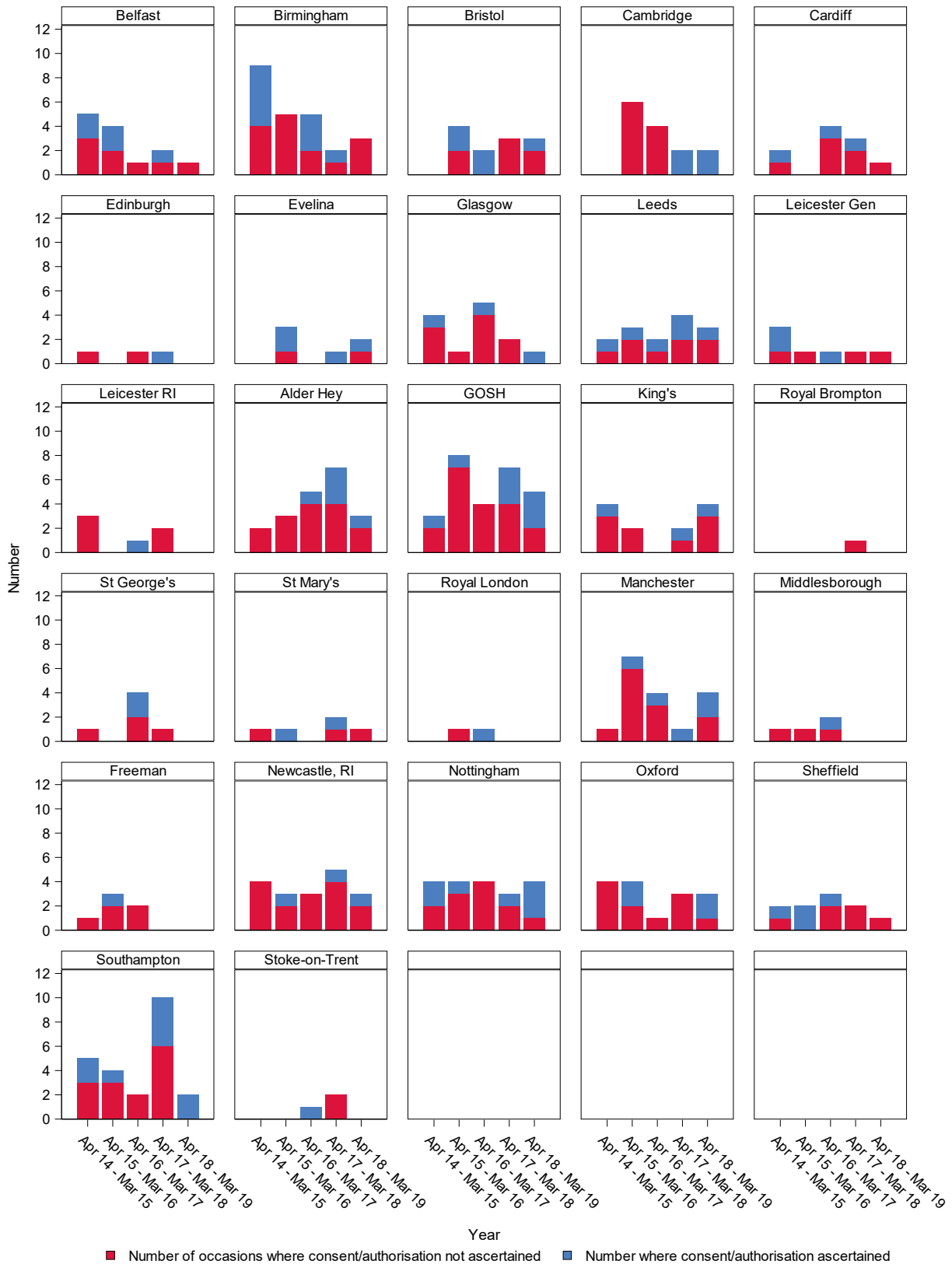
PICU DCD SNOD presence

1 April 2015 - 31 March 2019



PICU DCD consent/authorisation rate

1 April 2015 - 31 March 2019



PICU: Tabulated Data

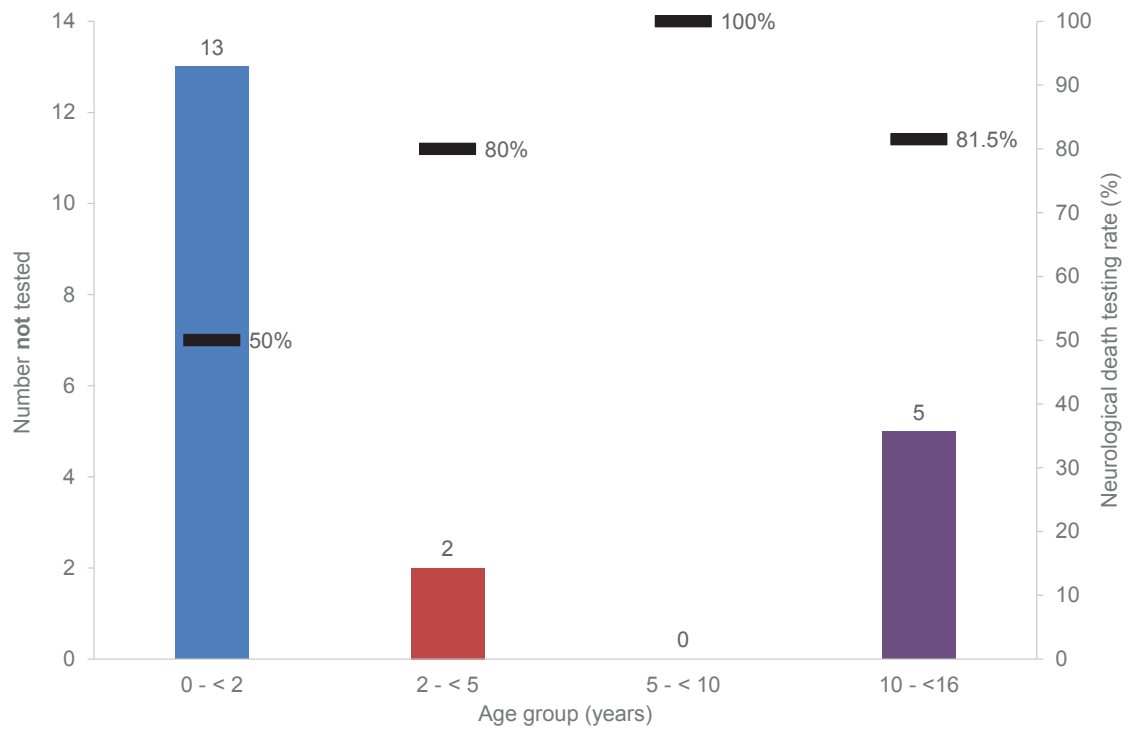
1 April 2018 - 31 March 2019

Hospital	Number not neurological death tested (Total neurological death suspected)	Number not referred (Total meeting referral criteria)		Number of families approached without SNOD present (Total approached)		Number where consent/authorisation not ascertained (Total approached)	
		DBD	DCD	DBD	DCD	DBD	DCD
BELFAST, ROYAL BELFAST HOSPITAL FOR SICK CHILDREN	1 (4)	0 (4)	1 (5)	0 (2)	1 (1)	0 (2)	1 (1)
BIRMINGHAM, BIRMINGHAM CHILDREN'S HOSPITAL	1 (2)	0 (2)	8 (21)	0 (0)	2 (3)	0 (0)	3 (3)
BRISTOL, BRISTOL ROYAL HOSPITAL FOR CHILDREN	2 (6)	0 (6)	0 (8)	1 (4)	2 (3)	1 (4)	2 (3)
CAMBRIDGE, ADDENBROOKE'S HOSPITAL	1 (2)	0 (2)	0 (3)	1 (1)	1 (2)	1 (1)	0 (2)
CARDIFF, UNIVERSITY OF WALES HOSPITAL	1 (7)	0 (7)	0 (3)	1 (6)	0 (1)	2 (6)	1 (1)
EDINBURGH, ROYAL HOSPITAL FOR SICK CHILDREN	0 (0)	0 (0)	1 (1)	0 (0)	0 (0)	0 (0)	0 (0)
EVELINA CHILDRENS HOSPITAL	0 (2)	0 (2)	1 (4)	0 (2)	0 (2)	1 (2)	1 (2)
GLASGOW, THE ROYAL HOSPITAL FOR CHILDREN	0 (3)	0 (3)	0 (5)	0 (2)	0 (1)	0 (2)	0 (1)
LEEDS, LEEDS GENERAL INFIRMARY	1 (4)	0 (4)	3 (12)	0 (3)	1 (3)	1 (3)	2 (3)
LEICESTER, GLENFIELD GENERAL HOSPITAL	1 (1)	0 (1)	1 (5)	0 (0)	1 (1)	0 (0)	1 (1)
LEICESTER, LEICESTER ROYAL INFIRMARY	0 (2)	0 (2)	0 (1)	0 (2)	0 (0)	0 (2)	0 (0)
LIVERPOOL, ALDER HEY CHILDREN'S HOSPITAL	2 (5)	1 (5)	7 (18)	0 (2)	2 (3)	2 (2)	2 (3)
LONDON, GREAT ORMOND STREET HOSPITAL FOR CHILDREN	0 (5)	0 (5)	1 (10)	0 (4)	1 (5)	3 (4)	2 (5)
LONDON, KING'S COLLEGE HOSPITAL	3 (5)	0 (5)	0 (9)	0 (1)	1 (4)	0 (1)	3 (4)
LONDON, ROYAL BROMPTON HOSPITAL	0 (0)	0 (0)	0 (1)	0 (0)	0 (0)	0 (0)	0 (0)
LONDON, ST GEORGE'S HOSPITAL	0 (4)	0 (4)	0 (1)	1 (4)	0 (0)	0 (4)	0 (0)
LONDON, ST MARY'S HOSPITAL	1 (3)	0 (3)	0 (2)	0 (1)	0 (1)	0 (1)	1 (1)
LONDON, THE ROYAL LONDON HOSPITAL (WHITECHAPEL)	0 (2)	0 (2)	0 (0)	0 (2)	0 (0)	0 (2)	0 (0)
MANCHESTER, ROYAL MANCHESTER CHILDREN'S HOSPITAL	2 (7)	0 (7)	0 (9)	0 (5)	0 (4)	2 (5)	2 (4)
MIDDLESBROUGH, THE JAMES COOK UNIVERSITY HOSPITAL	0 (0)	0 (0)	0 (0)	0 (0)	0 (0)	0 (0)	0 (0)
NEWCASTLE, FREEMAN HOSPITAL	0 (1)	0 (1)	0 (3)	0 (1)	0 (0)	0 (1)	0 (0)
NEWCASTLE, ROYAL VICTORIA INFIRMARY	2 (3)	0 (3)	0 (9)	0 (1)	2 (3)	0 (1)	2 (3)
NOTTINGHAM, NOTTINGHAM UNIVERSITY HOSPITALS QMC CAMPUS	1 (6)	1 (6)	0 (6)	1 (2)	1 (4)	1 (2)	1 (4)
OXFORD, JOHN RADCLIFFE HOSPITAL	0 (0)	0 (0)	1 (8)	0 (0)	0 (3)	0 (0)	1 (3)
SHEFFIELD, SHEFFIELD CHILDREN'S HOSPITAL	1 (2)	0 (2)	3 (7)	0 (1)	1 (1)	0 (1)	1 (1)
SOUTHAMPTON, SOUTHAMPTON UNIVERSITY HOSPITALS	0 (0)	0 (0)	0 (5)	0 (0)	0 (2)	0 (0)	0 (2)
STOKE-ON-TRENT, ROYAL STOKE UNIVERSITY HOSPITAL	0 (0)	0 (0)	1 (1)	0 (0)	0 (0)	0 (0)	0 (0)

Note that patients may appear in more than one group

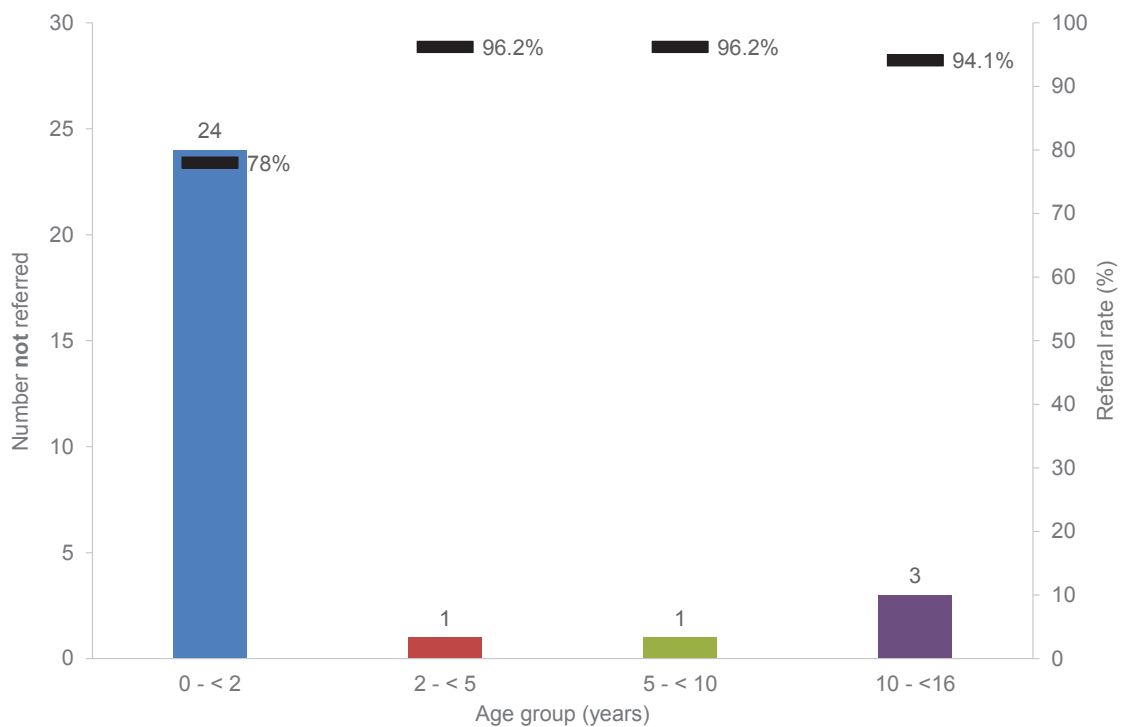
Comparison of neurological death testing in PICUs by age group

1 April 2018 - 31 March 2019



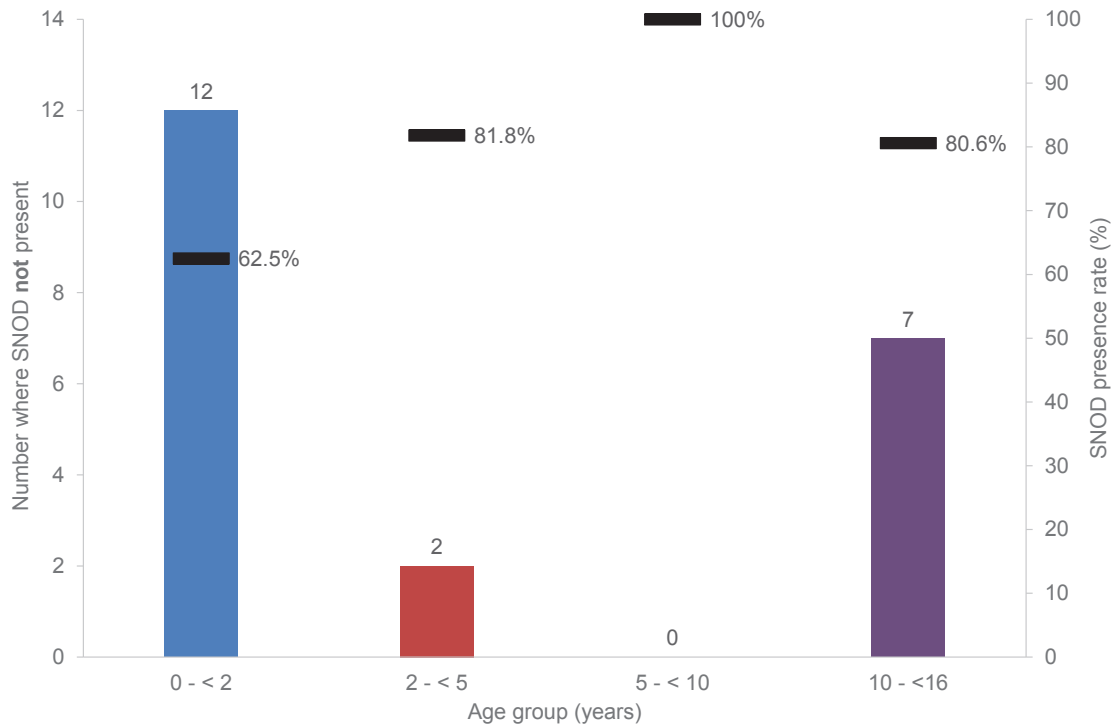
Comparison of combined DBD and DCD referral in PICUs by age group

1 April 2018 - 31 March 2019



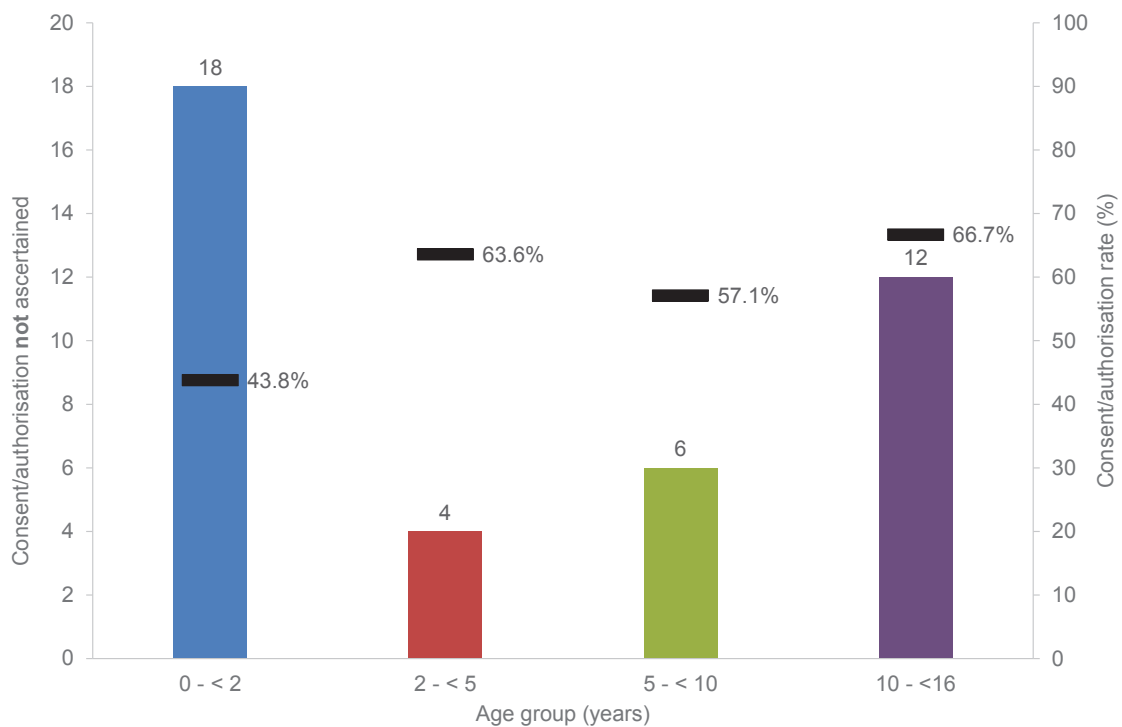
Comparison of combined DBD and DCD SNOD presence in PICUs by age group

1 April 2018 - 31 March 2019



Comparison of combined DBD and DCD consent/authorisation in PICUs by age group

1 April 2018 - 31 March 2019



Neonatal data - all neonatal patients included in the Potential Donor Audit (PDA)

1 April 2018 - 31 March 2019

Age in months	Audited patient deaths	Patients meeting DBD or DCD referral criteria	Patients referred	Eligible DBD or DCD donors	Consent\ Authorisation given by family	Actual donors
0	155	35	22	27	3	1
1	136	25	18	23	3	1

Note that not all neonatal intensive care units are included in the UK Potential Donor Audit, therefore the data presented do not capture the whole national neonatal donor potential.

