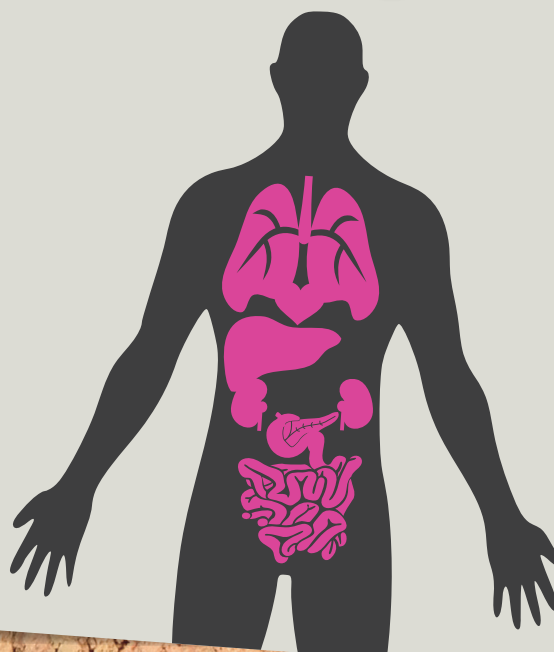


Lesson 1:

An introduction to organ and tissue donation



Activity 1: True or false organ and tissue donation quiz

Read the statement and tick if you think the statement is either true or false

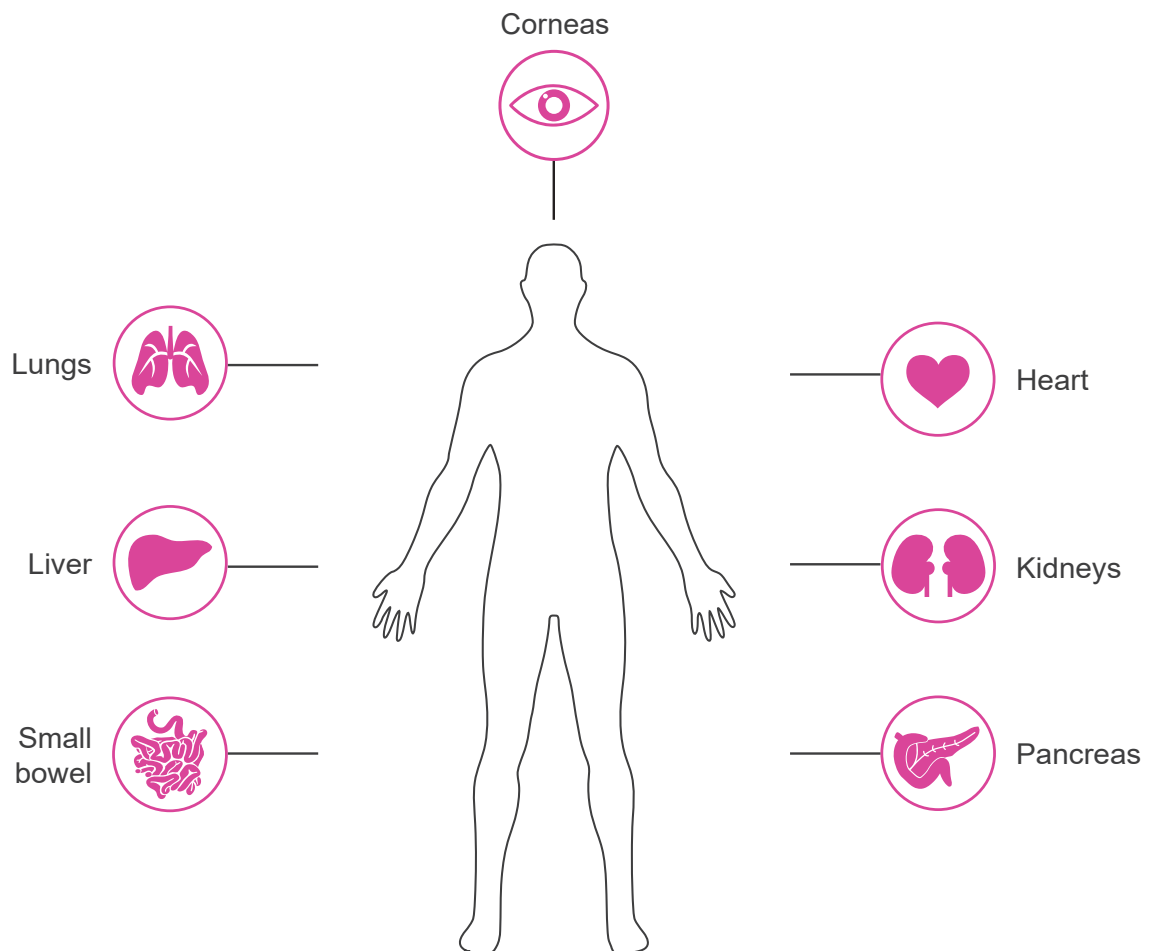
| Statement | True | False |
|---|------|-------|
| 1. The kidney, liver and heart are the only organs that can be donated. | | |
| 2. Most people would consider donating their organs and tissues but few have told their families. | | |
| 3. Around 6,000 people in the UK are in need of an organ transplant. | | |
| 4. Having a medical condition prevents you from becoming an organ or tissue donor. | | |
| 5. On average three people die every week in need of a transplant. | | |
| 6. Age is a barrier to organ and tissue donation. | | |
| 7. You need to be registered on the NHS Organ Donor Register to be a donor. | | |
| 8. A child's donated organs go to a child recipient. | | |
| 9. One organ donor can save one life. | | |
| 10. All major religions in the UK support the principles of organ and tissue donation. | | |
| 11. People who wear glasses can't donate their corneas. | | |



Activity 3: Body systems

Task

1. Can you identify and label, on the diagram below, the location of the seven major organs and tissues that can be used in transplants?



Activity 3: Body systems

Research task

Find information about the seven major organs and tissues and complete the table below:

| Organs or tissues that can be donated | How does this organ or tissue work in our body? | What disease can damage this organ or tissue (list ONE example for each) |
|---------------------------------------|---|--|
| Heart | | |
| Lungs | | |
| Liver | | |
| Kidneys | | |
| Small bowel | | |
| Pancreas | | |
| Corneas | | |



Activity 4: Looking back on the lesson

What do you think about organ and tissue donation?

Read each statement and give a score from **1** to **5** (a score of 1 means strongly agree and 5 means strongly disagree).

| Statement | Score |
|--|-------|
| I think the topic we covered today is very important. | |
| I feel I have better knowledge and understanding on organ and tissue donation. | |
| I feel more confident talking to a friend about organ and tissue donation. | |
| I am more likely to go home and talk to my family and friends about organ and tissue donation. | |
| I think the lesson about organ and tissue donation covered the topic in enough detail. | |
| Before the lesson I never considered the topic of organ and tissue donation. | |
| It is important to save and improve the lives of people needing a transplant. | |
| The group activities today encouraged me to talk about organ and tissue donation. | |
| I know where I can independently find out more about organ and tissue donation e.g. websites. | |

| | |
|--|--|
| The three most important things I have learnt about organ and tissue donation are: | |
| | |
| | |



This lesson on organ and tissue donation could be better if:

