

South East Organ Donation Services Team

Taking Organ Transplantation to 2020

In 2017/18, from 191 consented donors the South East Organ Donation Services Team facilitated 145 actual solid organ donors resulting in 356 patients receiving a life-saving or life-changing transplant.

In addition to the 145 proceeding donors there were 46 additional consented donors that did not proceed.

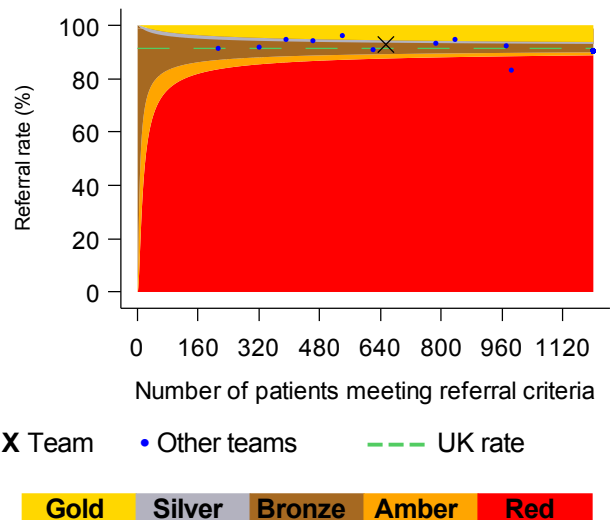
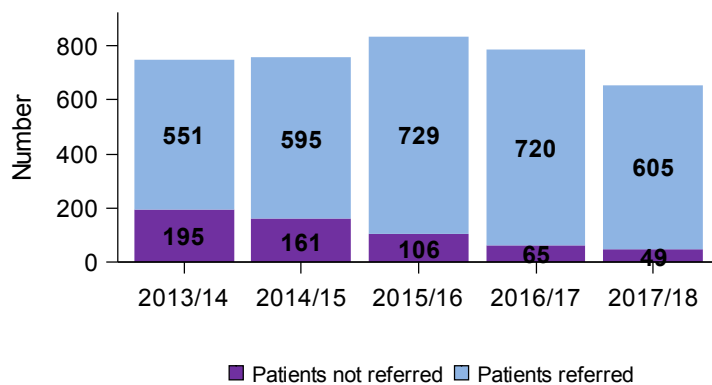
Best quality of care in organ donation

Referral of potential deceased organ donors

Goal: Every patient who meets the referral criteria should be identified and referred to NHS Blood and Transplant's Organ Donation Service

Aim: There should be no purple on the chart

Aim: The team (marked with a cross) should fall within Bronze, Silver, or Gold



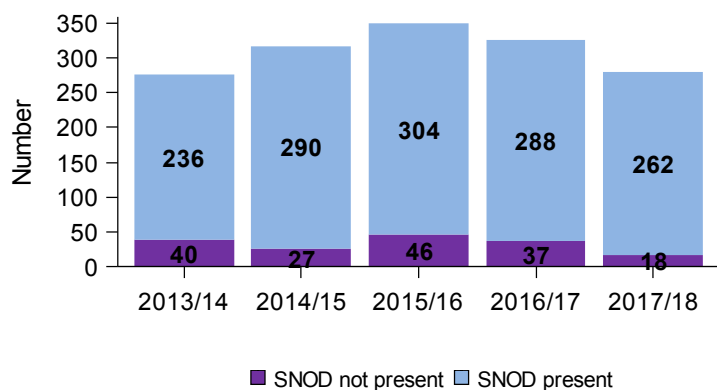
605 potential organ donors were referred to the team during 2017/18. There were 49 occasions where potential organ donors were not referred.

When compared with UK performance, the performance within the Trusts in the team was average (bronze) for referral of potential organ donors to NHS Blood and Transplant.

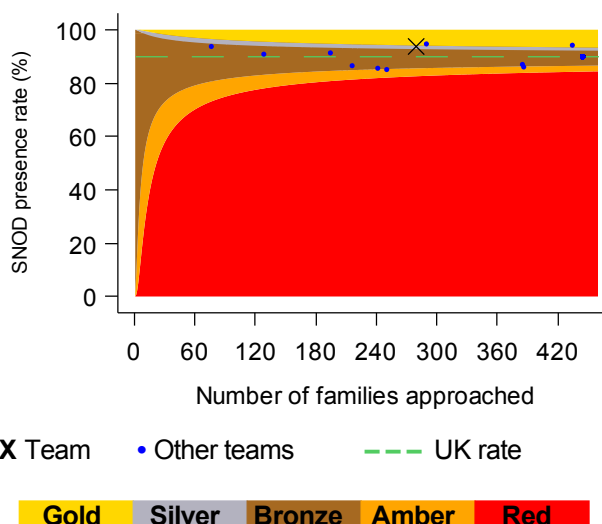
Presence of Specialist Nurse for Organ Donation

Goal: A Specialist Nurse for Organ Donation (SNOD) should be present during every organ donation discussion with families

Aim: There should be no purple on the chart



Aim: The team (marked with a cross) should fall within Bronze, Silver, or Gold



A SNOD was present for 262 organ donation discussions with families during 2017/18. There were 18 occasions where a SNOD was not present.

When compared with UK performance, the performance within the Trusts in the team was good (silver) for SNOD presence when approaching families to discuss organ donation.

Further information

Further information on potential donors after brain death (DBD) and potential donors after circulatory death (DCD) within the region are shown below, including a UK comparison.

	DBD		DCD		Deceased donors	
	South East	UK	South East	UK	South East	UK
Patients meeting organ donation referral criteria ¹	205	1954	475	6281	654	7978
Referred to Organ Donation Service	204	1929	427	5615	605	7302
<i>Referral rate %</i>	B 100%	99%	B 90%	89%	B 93%	92%
Neurological death tested	173	1676				
<i>Testing rate %</i>	B 84%	86%				
Eligible donors ²	167	1582	274	4456	441	6038
Family approached	149	1471	131	1858	280	3329
Family approached and SNOD present	145	1394	117	1591	262	2985
<i>% of approaches where SNOD present</i>	B 97%	95%	B 89%	86%	S 94%	90%
Consent ascertained	111	1066	83	1115	194	2181
<i>Consent rate %</i>	B 74%	72%	B 63%	60%	B 69%	66%
Actual donors (PDA data)	101	955	46	613	147	1568
<i>% of consented donors that became actual donors</i>	91%	90%	55%	55%	76%	72%

¹ DBD - A patient with suspected neurological death
DCD - A patient in whom imminent death is anticipated, ie a patient receiving assisted ventilation, a clinical decision to withdraw treatment has been made and death is anticipated within 4 hours

² DBD - Death confirmed by neurological tests and no absolute contraindications to solid organ donation
DCD - Imminent death anticipated and treatment withdrawn with no absolute contraindications to solid organ donation

Note that a patient that meets both the referral criteria for DBD and DCD organ donation is featured in both the DBD and DCD data but will only be counted once in the deceased donors total

Gold **Silver** **Bronze** **Amber** **Red**

For further information, including definitions, see the latest Potential Donor Audit report at www.odt.nhs.uk/statistics-and-reports/potential-donor-audit/