

## South Central Organ Donation Services Team

### Taking Organ Transplantation to 2020

In 2017/18, from 170 consented donors the South Central Organ Donation Services Team facilitated 116 actual solid organ donors resulting in 313 patients receiving a life-saving or life-changing transplant.

In addition to the 116 proceeding donors there were 54 additional consented donors that did not proceed.

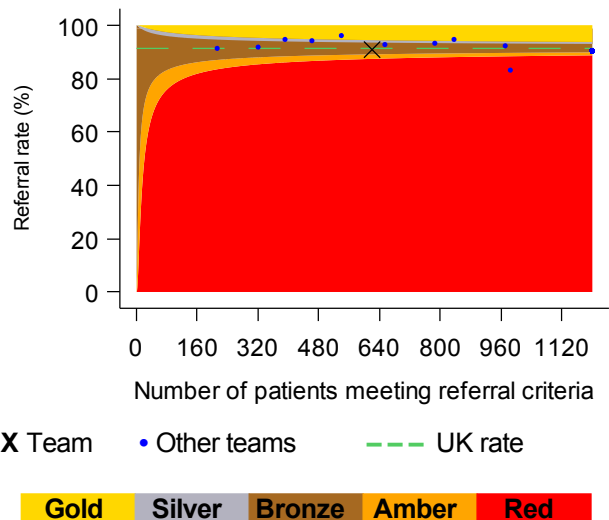
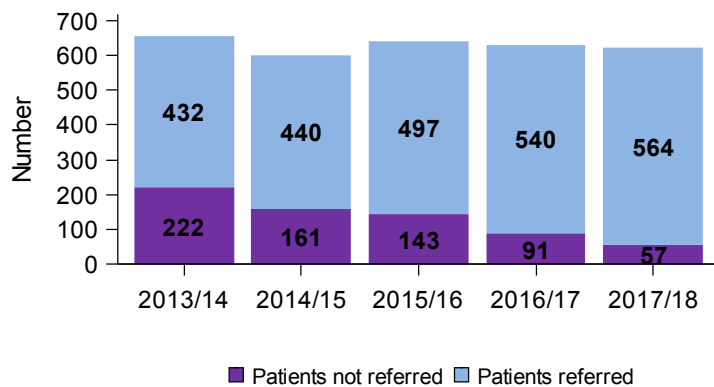
### Best quality of care in organ donation

#### Referral of potential deceased organ donors

**Goal: Every patient who meets the referral criteria should be identified and referred to NHS Blood and Transplant's Organ Donation Service**

**Aim: There should be no purple on the chart**

**Aim: The team (marked with a cross) should fall within Bronze, Silver, or Gold**



564 potential organ donors were referred to the team during 2017/18. There were 57 occasions where potential organ donors were not referred.

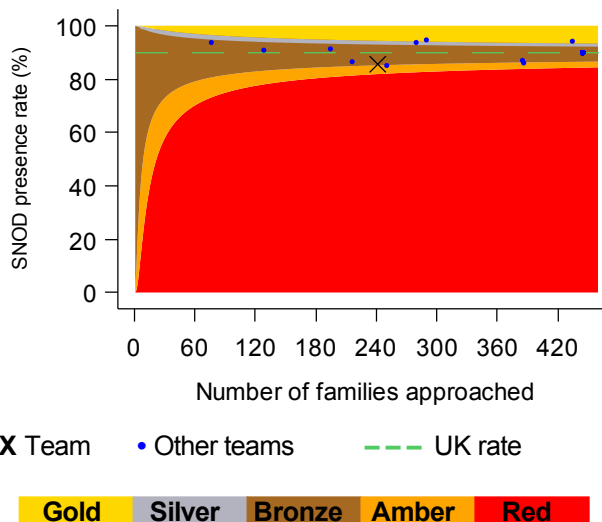
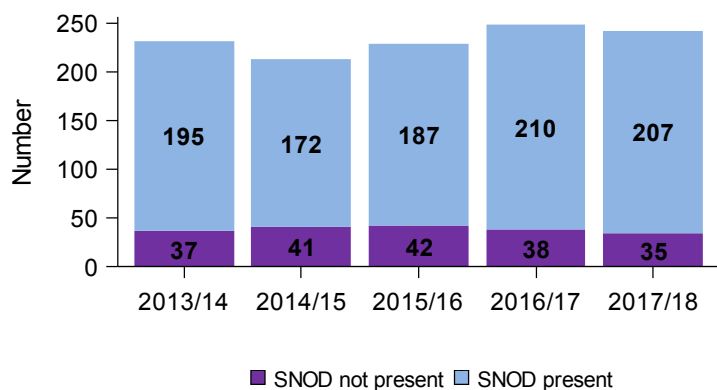
When compared with UK performance, the performance within the Trusts in the team was average (bronze) for referral of potential organ donors to NHS Blood and Transplant.

## Presence of Specialist Nurse for Organ Donation

**Goal: A Specialist Nurse for Organ Donation (SNOD) should be present during every organ donation discussion with families**

**Aim: There should be no purple on the chart**

**Aim: The team (marked with a cross) should fall within Bronze, Silver, or Gold**



A SNOD was present for 207 organ donation discussions with families during 2017/18. There were 35 occasions where a SNOD was not present.

When compared with UK performance, the performance within the Trusts in the team was average (bronze) for SNOD presence when approaching families to discuss organ donation.

## Further information

Further information on potential donors after brain death (DBD) and potential donors after circulatory death (DCD) within the region are shown below, including a UK comparison.

	DBD		DCD		Deceased donors	
	South Central	UK	South Central	UK	South Central	UK
Patients meeting organ donation referral criteria <sup>1</sup>	110	1954	525	6281	621	7978
Referred to Organ Donation Service	109	1929	468	5615	564	7302
<i>Referral rate %</i>	<b>B</b> 99%	99%	<b>B</b> 89%	89%	<b>B</b> 91%	92%
Neurological death tested	100	1676				
<i>Testing rate %</i>	<b>B</b> 91%	86%				
Eligible donors <sup>2</sup>	94	1582	380	4456	474	6038
Family approached	90	1471	152	1858	242	3329
Family approached and SNOD present	85	1394	122	1591	207	2985
<i>% of approaches where SNOD present</i>	<b>B</b> 94%	95%	<b>B</b> 80%	86%	<b>B</b> 86%	90%
Consent ascertained	72	1066	90	1115	162	2181
<i>Consent rate %</i>	<b>B</b> 80%	72%	<b>B</b> 59%	60%	<b>B</b> 67%	66%
Actual donors (PDA data)	65	955	49	613	114	1568
<i>% of consented donors that became actual donors</i>	90%	90%	54%	55%	70%	72%

<sup>1</sup> DBD - A patient with suspected neurological death  
DCD - A patient in whom imminent death is anticipated, ie a patient receiving assisted ventilation, a clinical decision to withdraw treatment has been made and death is anticipated within 4 hours

<sup>2</sup> DBD - Death confirmed by neurological tests and no absolute contraindications to solid organ donation  
DCD - Imminent death anticipated and treatment withdrawn with no absolute contraindications to solid organ donation

Note that a patient that meets both the referral criteria for DBD and DCD organ donation is featured in both the DBD and DCD data but will only be counted once in the deceased donors total

**Gold** **Silver** **Bronze** **Amber** **Red**

For further information, including definitions, see the latest Potential Donor Audit report at [www.odt.nhs.uk/statistics-and-reports/potential-donor-audit/](http://www.odt.nhs.uk/statistics-and-reports/potential-donor-audit/)